



(19) **United States**

(12) **Patent Application Publication**  
**Gao**

(10) **Pub. No.: US 2015/0371655 A1**

(43) **Pub. Date: Dec. 24, 2015**

(54) **ACOUSTIC ECHO PREPROCESSING FOR SPEECH ENHANCEMENT**

(71) Applicant: **Yang Gao**, Mission Viejo, CA (US)

(72) Inventor: **Yang Gao**, Mission Viejo, CA (US)

(73) Assignee: **Yang Gao**, Mission Viejo, CA (US)

(21) Appl. No.: **14/740,627**

(22) Filed: **Jun. 16, 2015**

**Related U.S. Application Data**

(60) Provisional application No. 62/014,346, filed on Jun. 19, 2014.

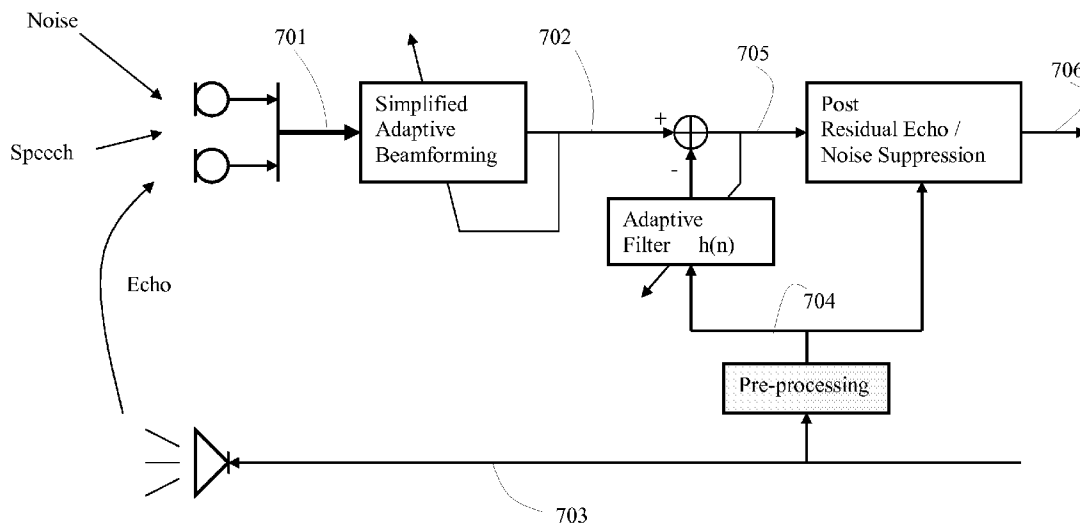
**Publication Classification**

(51) **Int. Cl.**  
**G10L 21/0208** (2006.01)  
**G10L 21/0224** (2006.01)  
**G10L 21/02** (2006.01)

(52) **U.S. Cl.**  
CPC ..... **G10L 21/0208** (2013.01); **G10L 21/0202** (2013.01); **G10L 21/0224** (2013.01); **G10L 2021/02082** (2013.01)

(57) **ABSTRACT**

A method for cancelling/reducing acoustic echoes in speech/ audio signal enhancement processing comprises selecting a long-term filter based on an echo tail length detection or an echo reverberation time detection of a microphone input signal; a reference signal is pre-processed with the selected long-term filter; the pre-processed reference signal is used to excite an adaptive filter wherein the output of the adaptive filter forms a replica signal of acoustic echo and/or acoustic echo tail; the replica signal of acoustic echo and/or acoustic echo tail is subtracted from a microphone input signal to suppress the acoustic echo and/or acoustic echo tail in the microphone input signal. The echo tail length or the echo reverberation time is detected by analyzing and comparing the microphone input signal and a received signal which is sent to a speaker. A strong long-term filter is selected if the detected echo tail length or the detected echo reverberation time is long; a weak long-term filter is selected if the detected echo tail length or the detected echo reverberation time is not long.



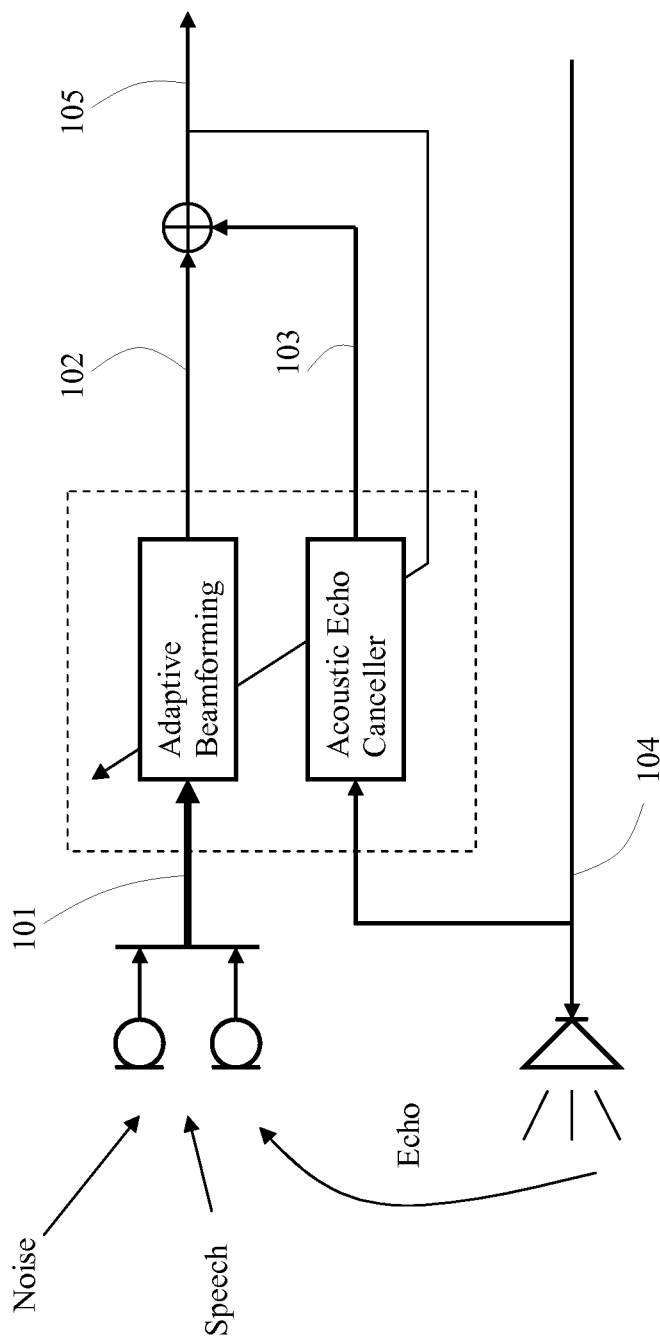


Figure 1

(Pre-Art)

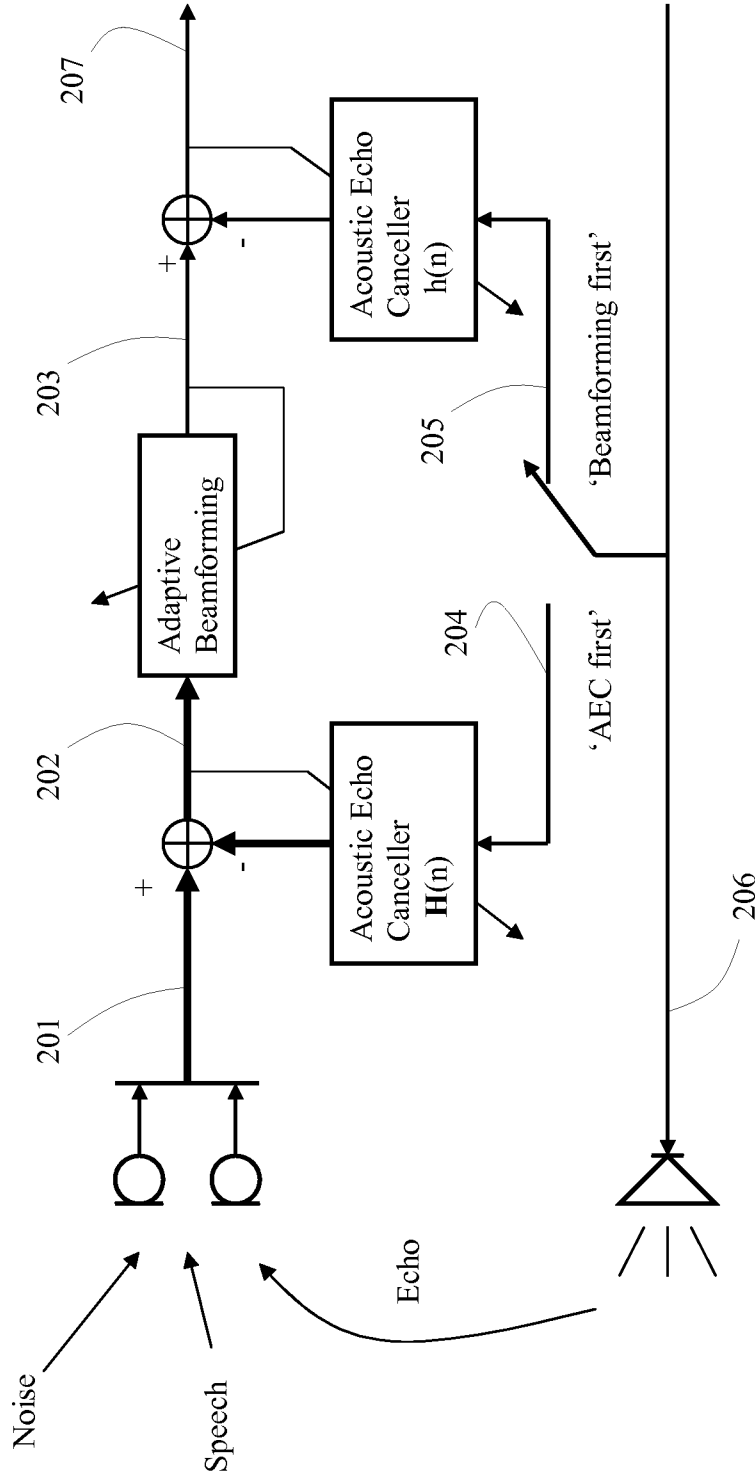


Figure 2

(Pre-Art)

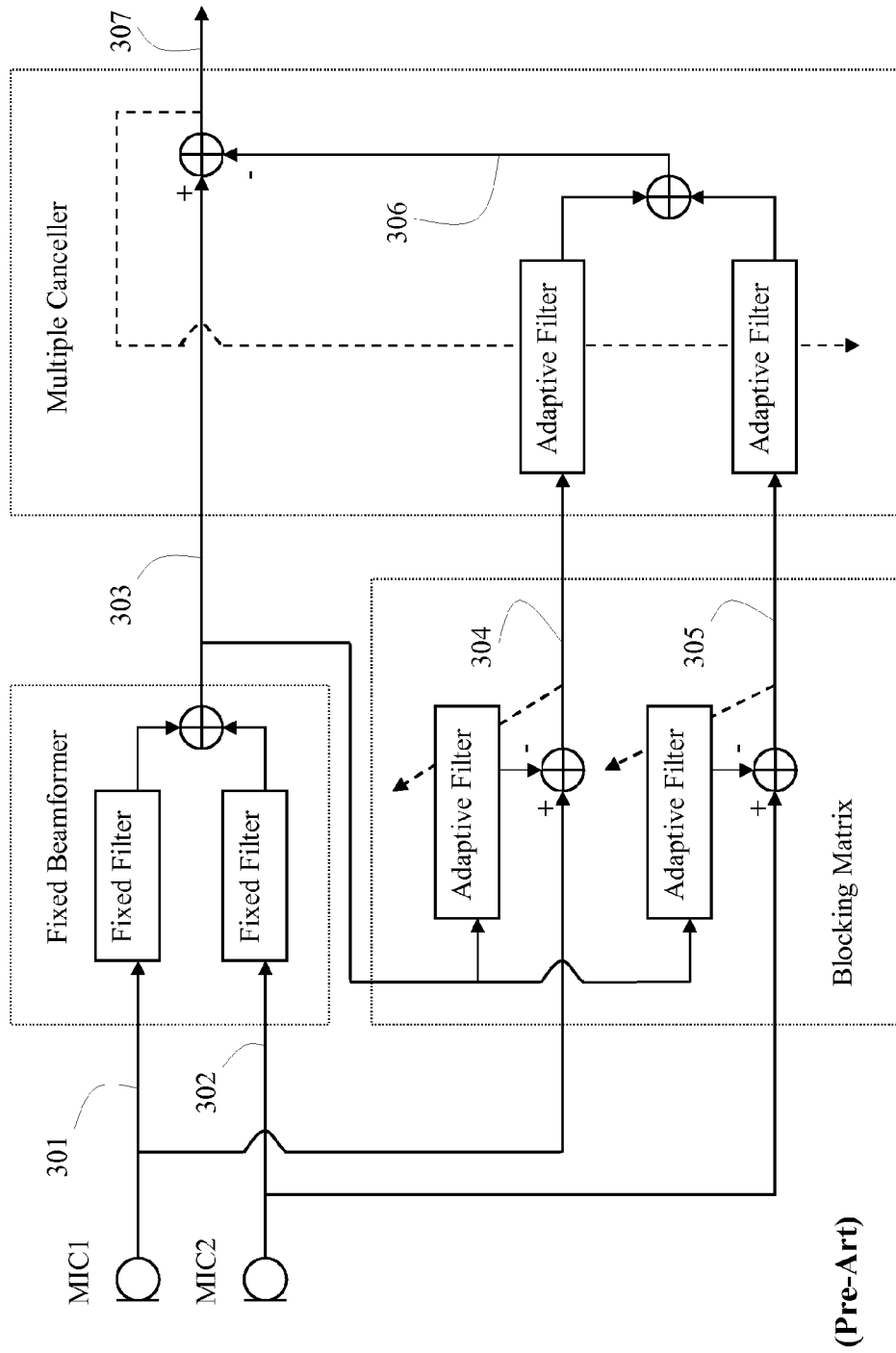


Figure 3

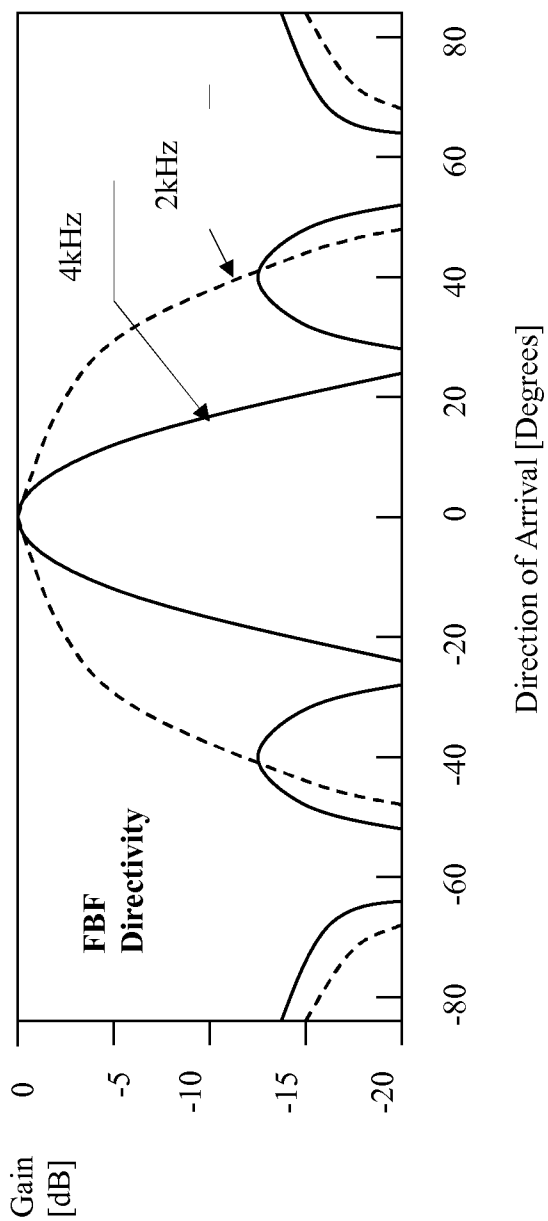


Figure 4

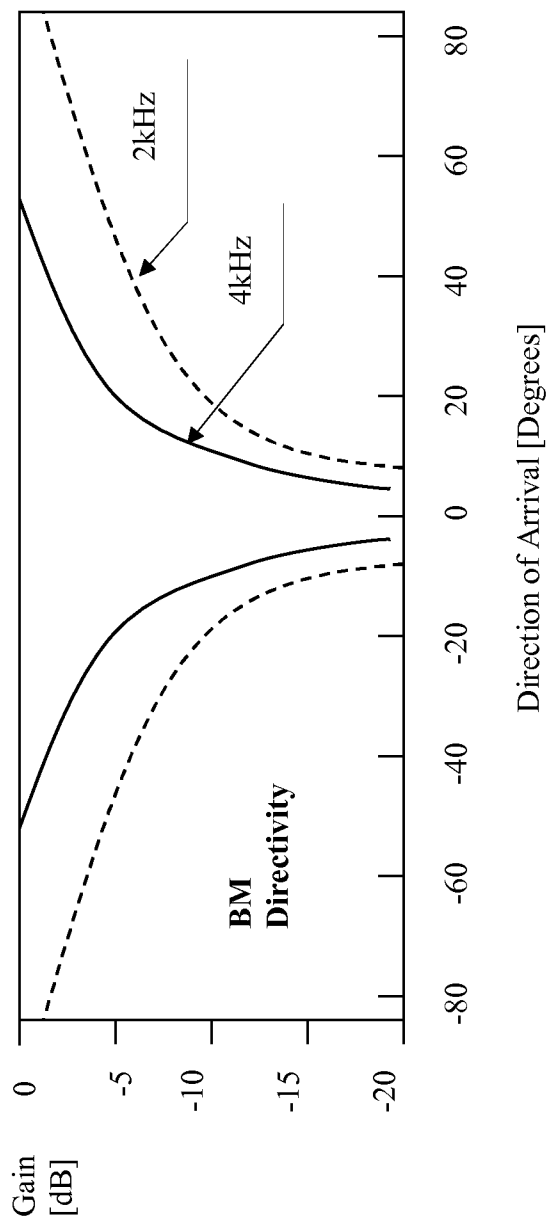


Figure 5

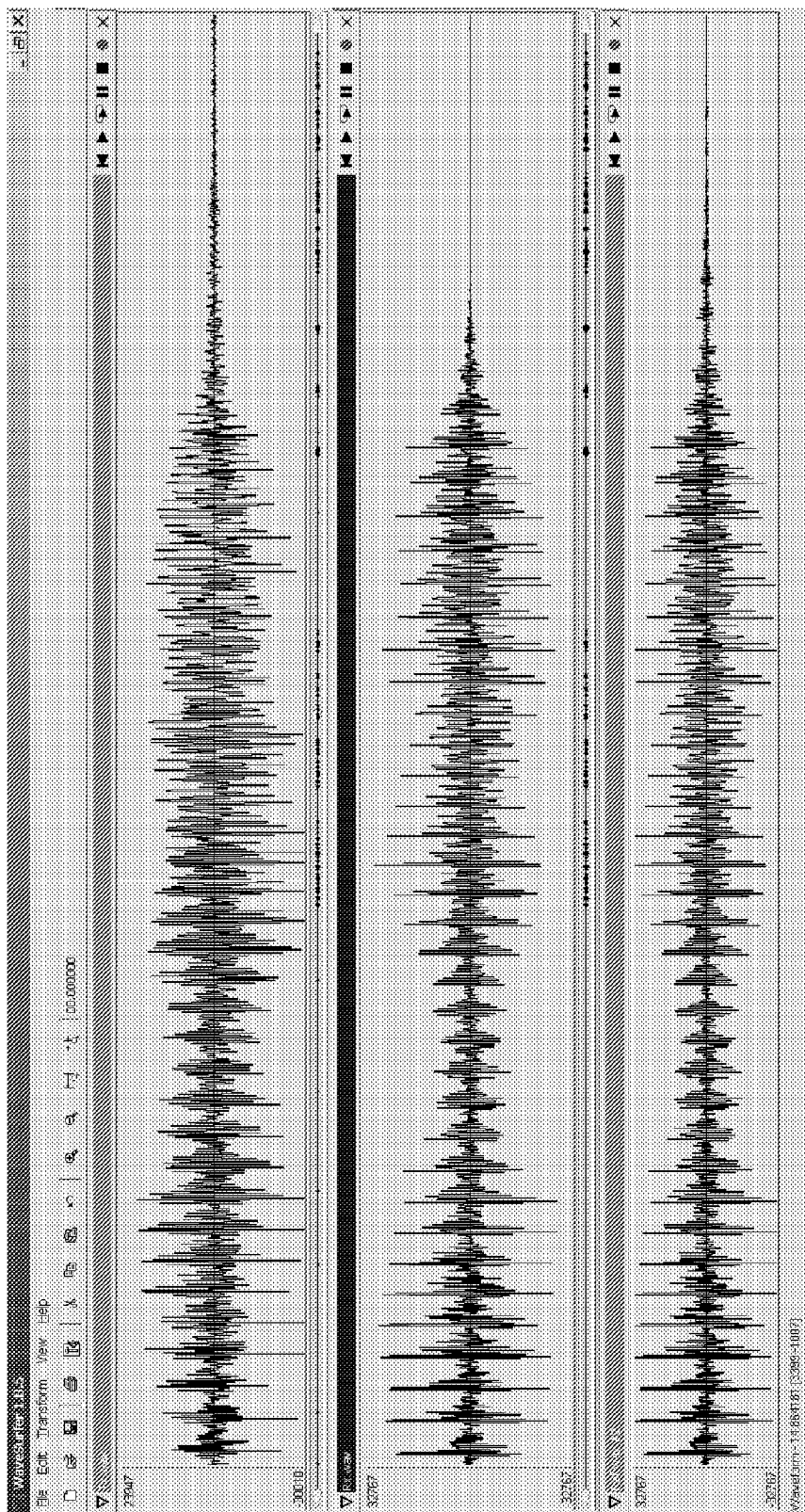


Figure 6

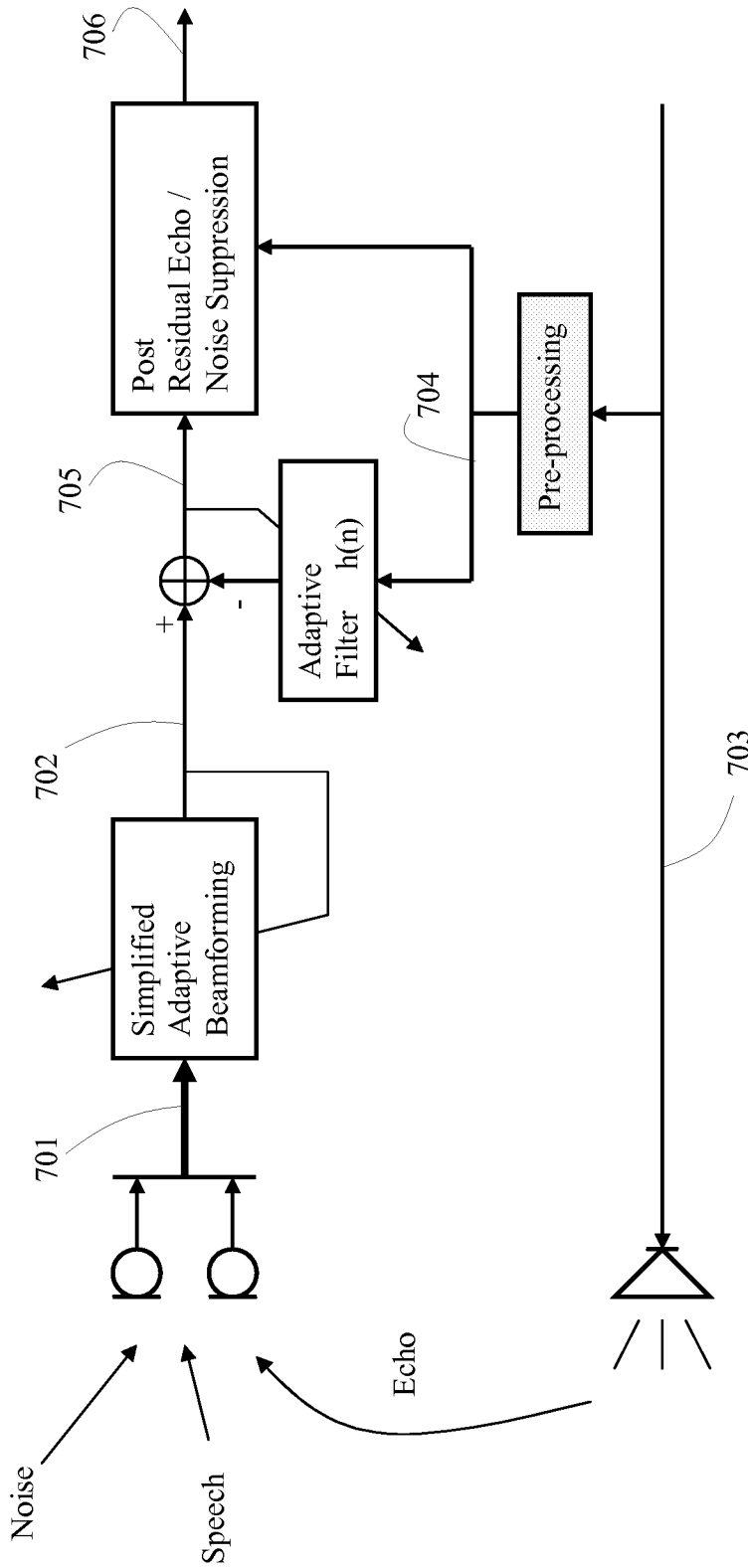


Figure 7

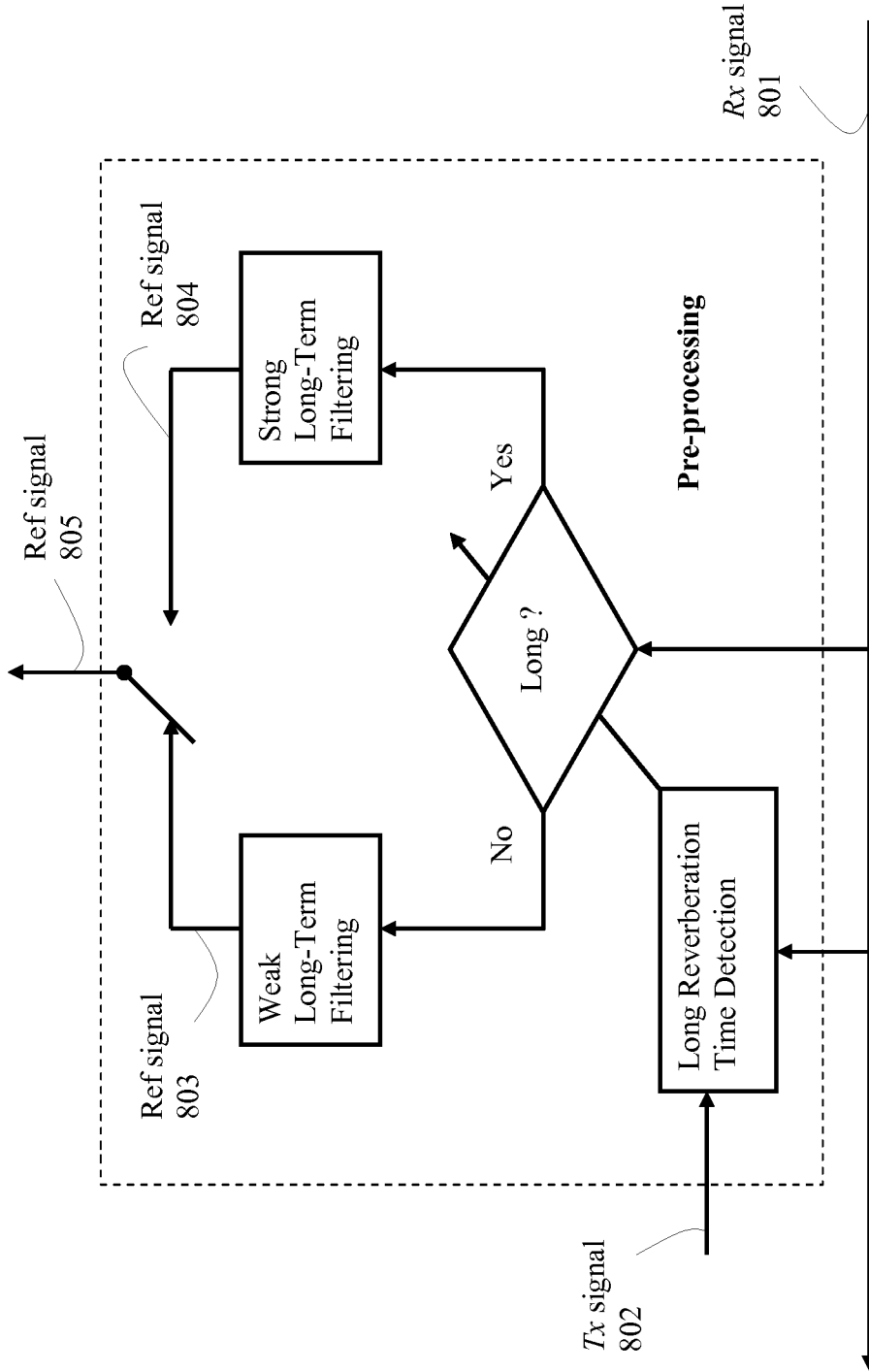


Figure 8

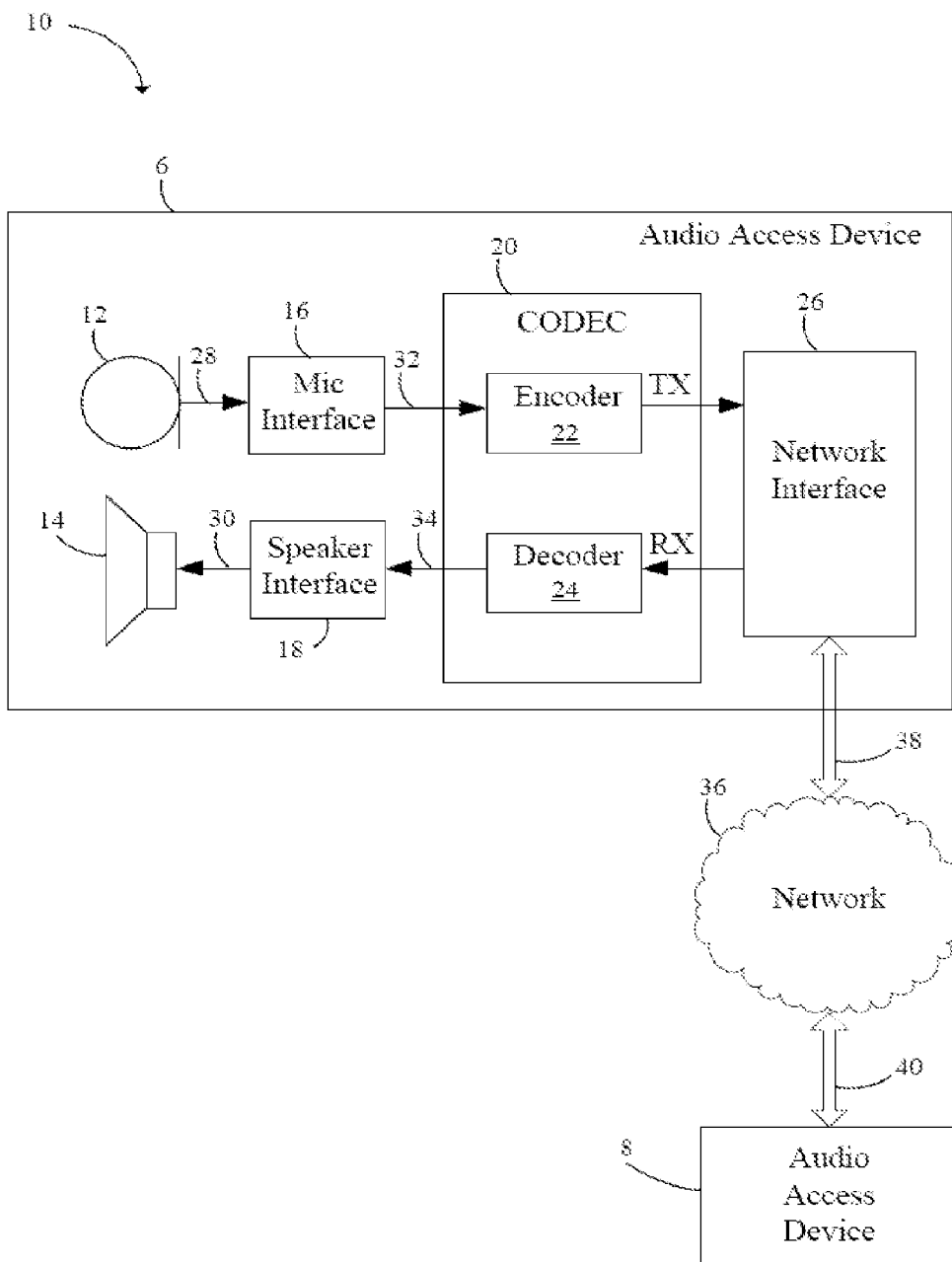
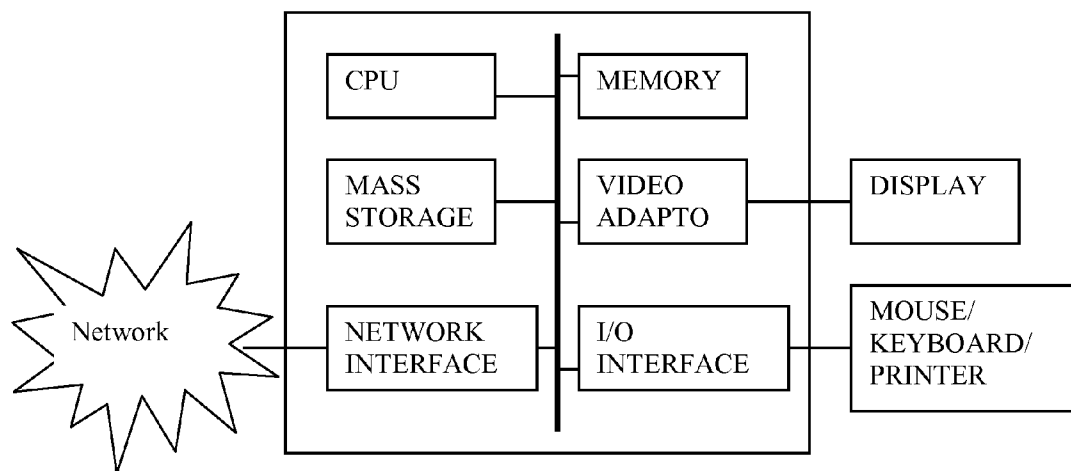


Figure 9



*Figure 10*

**ACOUSTIC ECHO PREPROCESSING FOR SPEECH ENHANCEMENT**

[0001] This application claims the benefit of U.S. Provisional Application No. 62/014,346 filed on Jun. 19, 2014, entitled "Acoustic Echo Preprocessing for Speech Enhancement," U.S. Provisional Application No. 62/014,355 filed on Jun. 19, 2014, entitled "Energy Adjustment of Acoustic Echo Replica Signal for Speech Enhancement," U.S. Provisional Application No. 62/014,359 filed on Jun. 19, 2014, entitled "Control of Acoustic Echo Canceller Adaptive Filter for Speech Enhancement," U.S. Provisional Application No. 62/014,365 filed on Jun. 19, 2014, entitled "Post Ton Suppression for Speech Enhancement," which application is hereby incorporated herein by reference.

**TECHNICAL FIELD**

[0002] The present invention is generally in the field of Echo Cancellation/Speech Enhancement. In particular, the present invention is used to improve Acoustic Echo Cancellation.

**BACKGROUND**

[0003] For audio signal acquisition human/machine interfaces, especially in hands-free condition, adaptive beamforming microphone arrays have been widely employed for enhancing a desired signal while suppressing interference and noise. For full-duplex communication systems, not only interference and noise corrupt the desired signal, but also acoustic echoes originating from loudspeakers. For suppressing acoustic echoes, acoustic echo cancellers (AECs) using adaptive filters may be the optimum choice since they exploit the reference information provided by the loudspeaker signals.

[0004] To simultaneously suppress interferences and acoustic echoes, it is thus desirable to combine acoustic echo cancellation with adaptive beamforming in the acoustic human/machine interface. To achieve optimum performance, synergies between the AECs and the beamformer should be exploited while the computational complexity should be kept moderate. When designing such a joint acoustic echo cancellation and beamforming system, it proves necessary to consider especially the time-variance of the acoustic echo path, the background noise level, and the reverberation time of the acoustic environment. To combine acoustic echo cancellation with beamforming, various strategies were studied in the public literatures, reaching from cascades of AECs and beamformers to integrated solutions. These combinations address aspects such as maximization of the echo and noise suppression for slowly time-varying echo paths and high echo-to-interference ratios (EIRs), strongly time-varying echo paths, and low EIRs, or minimization of the computational complexity.

[0005] For full-duplex hands-free acoustic human/machine interfaces, often a combination of acoustic echo cancellation and speech enhancement is required to suppress acoustic echoes, local interference, and noise. However, efficient solutions for situations with high level background noise, with time-varying echo paths, with long echo reverberation time, and frequent double talk, are still a challenging research topic. To optimally exploit positive synergies between acoustic echo cancellation and speech enhancement, adaptive beamforming and acoustic echo cancellation may be jointly optimized. The adaptive beamforming system itself is already

quite complex for most consumer oriented applications; the system of jointly optimizing the adaptive beamforming and the acoustic echo canceller could be too complex.

[0006] An 'AEC first' system or 'beamforming first' system which has lower complexity than the system of jointly optimizing the adaptive beamforming and the acoustic echo canceller. In the 'AEC first' system, positive synergies for the adaptive beamforming can be exploited after convergence of the AECs: the acoustic echoes are efficiently suppressed by the AECs, and the adaptive beamformer does not depend on the echo signals. One AEC is necessary for each microphone channel so that multiple complexity is required for multiple microphones at least for filtering and filter update in comparison to an AEC for a single microphone. Moreover, in the presence of strong interference and noise, the adaptation of AECs must be slowed down or even stopped in order to avoid instabilities of the adaptive filters. Alternatively, the AEC can be placed behind the adaptive beamformer in the 'beamforming first' system; the complexity is reduced to that of AEC for a single microphone. However, positive synergies can not be exploited for the adaptive beamformer since the beamformer sees not only interferences but also acoustic echoes.

[0007] Beamforming is a technique which extracts the desired signal contaminated by interference based on directivity, i.e., spatial signal selectivity. This extraction is performed by processing the signals obtained by multiple sensors such as microphones located at different positions in the space. The principle of beamforming has been known for a long time. Because of the vast amount of necessary signal processing, most research and development effort has been focused on geological investigations and sonar, which can afford a high cost. With the advent of LSI technology, the required amount of signal processing has become relatively small. As a result, a variety of research projects where acoustic beamforming is applied to consumer-oriented applications such as cellular phone speech enhancement, have been carried out. Applications of beamforming include microphone arrays for speech enhancement. The goal of speech enhancement is to remove undesirable signals such as noise and reverberation. Amount research areas in the field of speech enhancement are teleconferencing, hands-free telephones, hearing aids, speech recognition, intelligibility improvement, and acoustic measurement.

[0008] The signal played back by the loudspeaker is fed back to the microphones, where the signals appear as acoustic echoes. With the assumption that the amplifiers and the transducers are linear, a linear model is commonly used for the echo paths between the loudspeaker signal and the microphone signals. To cancel the acoustic echoes in the microphone channel, an adaptive filter is placed in parallel to the echo paths between the loudspeaker signal and the microphone signal with the loudspeaker signal as a reference. The adaptive filter forms replicas of the echo paths such that the output signal of the adaptive filter are replicas of the acoustic echoes. Subtracting the output signal of the adaptive filter from the microphone signal thus suppresses the acoustic echoes. Acoustic echo cancellation is then a system identification problem, where the echo paths are usually identified by adaptive linear filtering. The design of the adaptation algorithm of the adaptive filter requires consideration of the nature of the echo paths and of the echo signals.

## SUMMARY

**[0009]** In accordance with an embodiment of the present invention, a method for cancelling/reducing acoustic echoes in speech/audio signal enhancement processing comprises pre-processing a reference signal with a fixed long-term filter; the pre-processed reference signal is used to excite an adaptive filter wherein the output of the adaptive filter forms a replica signal of acoustic echo and/or acoustic echo tail; the replica signal of acoustic echo and/or acoustic echo tail is subtracted from a microphone input signal to suppress the acoustic echo and/or acoustic echo tail in the microphone input signal.

**[0010]** In accordance with an alternative embodiment of the present invention, a method for cancelling/reducing acoustic echoes in speech/audio signal enhancement processing comprises selecting a long-term filter based on an echo tail length detection or an echo reverberation time detection of a microphone input signal; a reference signal is pre-processed with the selected long-term filter; the pre-processed reference signal is used to excite an adaptive filter wherein the output of the adaptive filter forms a replica signal of acoustic echo and/or acoustic echo tail; the replica signal of acoustic echo and/or acoustic echo tail is subtracted from a microphone input signal to suppress the acoustic echo and/or acoustic echo tail in the microphone input signal. The echo tail length or the echo reverberation time is detected by analyzing and comparing the microphone input signal and a received signal which is sent to a speaker. A strong long-term filter is selected if the detected echo tail length or the detected echo reverberation time is long; a weak long-term filter is selected if the detected echo tail length or the detected echo reverberation time is not long.

**[0011]** In an alternative embodiment, a speech signal enhancement processing apparatus comprises a processor, and a computer readable storage medium storing programming for execution by the processor. The programming include instructions to select a long-term filter based on an echo tail length detection or an echo reverberation time detection of a microphone input signal; a reference signal is pre-processed with the selected long-term filter; the pre-processed reference signal is used to excite an adaptive filter wherein the output of the adaptive filter forms replica signal of acoustic echo and/or acoustic echo tail; the replica signal of acoustic echo and/or acoustic echo tail is subtracted from a microphone input signal to suppress the acoustic echo and/or acoustic echo tail in the microphone input signal. The echo tail length or the echo reverberation time is detected by analyzing and comparing the microphone input signal and a received signal which is sent to a speaker. A strong long-term filter is selected if the detected echo tail length or the detected echo reverberation time is long; a weak long-term filter is selected if the detected echo tail length or the detected echo reverberation time is not long.

## BRIEF DESCRIPTION OF THE DRAWINGS

**[0012]** For a more complete understanding of the present invention, and the advantages thereof, reference is now made to the following descriptions taken in conjunction with the accompanying drawings, in which:

**[0013]** FIG. 1 illustrates a joint optimization of Adaptive Beamforming and Acoustic Echo Cancellation (AEC).

**[0014]** FIG. 2 illustrates a combination of AEC and Beamforming.

**[0015]** FIG. 3 illustrates a traditional Beamformer/Noise Canceller.

**[0016]** FIG. 4 illustrates a directivity of Fixed Beamformer.

**[0017]** FIG. 5 illustrates a directivity of Block Matrix.

**[0018]** FIG. 6 illustrates an echo tail comparison.

**[0019]** FIG. 7 illustrates an AEC with pre-processing of reference signal.

**[0020]** FIG. 8 illustrates a reference signal pre-processing for Echo Canceller.

**[0021]** FIG. 9 illustrates a communication system according to an embodiment of the present invention.

**[0022]** FIG. 10 illustrates a block diagram of a processing system that may be used for implementing the devices and methods disclosed herein.

## DETAILED DESCRIPTION OF ILLUSTRATIVE EMBODIMENTS

**[0023]** To optimally exploit positive synergies between acoustic echo cancellation and speech enhancement, adaptive beamforming and acoustic echo cancellation may be jointly optimized as shown in FIG. 1. **101** are input signals from an array of microphones; **102** is a noise reduced signal output from adaptive beamforming system; the signal **104** outputs to the speaker, which is used as a reference signal of the echo canceller to produce an echo replica signal **103**; the signal **102** and the signal **103** are combined to produce an optimal output signal **105** by jointly optimizing the adaptive beamforming and the acoustic echo canceller. The adaptive beamforming system itself is already quite complex for most consumer oriented applications; the FIG. 1 system of jointly optimizing the adaptive beamforming and the acoustic echo canceller could be too complex, although the FIG. 1 system can theoretically show its advantage for high levels of background noise, time-varying echo paths, long echo reverberation time, and frequent double talk.

**[0024]** FIG. 2 shows an 'AEC first' system or 'beamforming first' system which has lower complexity than the system of FIG. 1. In the 'AEC first' system, a matrix  $H(n)$  directly models the echo paths between the speaker and all microphones without interaction with the adaptive beamforming. For the adaptive beamforming, positive synergies can be exploited after convergence of the AECs: the acoustic echoes are efficiently suppressed by the AECs, and the adaptive beamformer does not depend on the echo signals. One AEC is necessary for each microphone channel so that multiple complexity is required for multiple microphones at least for filtering and filter update in comparison to an AEC for a single microphone. Moreover, in the presence of strong interference and noise, the adaptation of AECs must be slowed down or even stopped in order to avoid instabilities of the adaptive filters  $H(n)$ . Alternatively, the AEC can be placed behind the adaptive beamformer in the 'beamforming first' system; the complexity is reduced to that of AEC for a single microphone. However, positive synergies can not be exploited for the adaptive beamformer since the beamformer sees not only interferences but also acoustic echoes. **201** are input signals from an array of microphones; for the 'AEC first' system, echoes in each component signal of **201** need to be suppressed to get an array of signals **202** inputting to the adaptive beamforming system; the speaker output signal **206** is used as a reference signal **204** of echo cancellation for the 'AEC first' system or as a reference signal **205** of echo cancellation for the 'beamforming first' system. In the 'beamforming first' system, echoes only in one signal **203** output from the adaptive beam-

forming system need to be cancelled to get final output signal **207** in which both echoes and background noise have been suppressed or reduced. As the single adaptation of the echo canceller response  $h(n)$  in the 'beamforming first' system has much lower complexity than the matrix adaptation of the echo canceller response  $H(n)$  in the 'AEC first' system, obviously the 'beamforming first' system has lower complexity than the 'AEC first' system.

**[0025]** Applications of beamforming include microphone arrays for speech enhancement. The goal of speech enhancement is to remove undesirable signals such as noise and reverberation. Amount research areas in the field of speech enhancement are teleconferencing, hands-free telephones, hearing aids, speech recognition, intelligibility improvement, and acoustic measurement. Beamforming can be considered as multi-dimensional signal processing in space and time. Ideal conditions assumed in most theoretical discussions are not always maintained. The target DOA (direction of arrival), which is assumed to be stable, does change with the movement of the speaker. The sensor gains, which are assumed uniform, exhibit significant distribution. As a result, the performance obtained by beamforming may not be as good as expected. Therefore, robustness against steering-vector errors caused by these array imperfections are become more and more important.

**[0026]** A beamformer which adaptively forms its directivity pattern is called an adaptive beamformer. It simultaneously performs beam steering and null steering. In most traditional acoustic beamformers, however, only null steering is performed with an assumption that the target DOA is known a priori. Due to adaptive processing, deep nulls can be developed. Adaptive beamformers naturally exhibit higher interference suppression capability than its fixed counterpart. FIG. 3 depicts a structure of a widely known adaptive beamformer among various adaptive beamformers. Microphone array could contain multiple microphones; for the simplicity, FIG. 3 only shows two microphones.

**[0027]** FIG. 3 comprises a fixed beamformer (FBF), a multiple input canceller (MC), and blocking matrix (BM). The FBF is designed to form a beam in the look direction so that the target signal is passed and all other signals are attenuated. On the contrary, the BM forms a null in the look direction so that the target signal is suppressed and all other signals are passed through. The inputs **301** and **302** of FBF are signals coming from MICs. **303** is the output target signal of FBF. **301**, **302** and **303** are also used as inputs of BM. The MC is composed of multiple adaptive filters each of which is driven by a BM output. The BM outputs **304** and **305** contain all the signal components except that in the look direction. Based on these signals, the adaptive filters generate replicas **306** of components correlated with the interferences. All the replicas are subtracted from a delayed output signal of the fixed beamformer which has an enhanced target signal component. In the subtracted output **307**, the target signal is enhanced and undesirable signals such as ambient noise and interferences are suppressed. FIG. 4. shows an example of directivity of the FBF. FIG. 5. shows an example of directivity of the BM. In real applications, the system FIG. 3 can be simplified and made more efficient, the details of which are out of scope of this specification and will not be discussed here.

**[0028]** The signal played back by the loudspeaker is fed back to the microphones, where the signals appear as acoustic echoes. With the assumption that the amplifiers and the transducers are linear, a linear model is commonly used for the

echo paths between the loudspeaker signal and the microphone signals. To cancel the acoustic echoes in the microphone channel, an adaptive filter is placed in parallel to the echo paths between the loudspeaker signal and the microphone signal with the loudspeaker signal as a reference. The adaptive filter forms replicas of the echo paths such that the output signal of the adaptive filter are replicas of the acoustic echoes. Subtracting the output signal of the adaptive filter from the microphone signal thus suppresses the acoustic echoes. Acoustic echo cancellation is then a system identification problem, where the echo paths are usually identified by adaptive linear filtering. The design of the adaptation algorithm of the adaptive filter requires consideration of the nature of the echo paths and of the echo signals.

**[0029]** The acoustic echo paths may vary strongly over time due to moving sources or changes in the acoustic environment requiring a good tracking performance of the adaptation algorithm. The reverberation time of the acoustic environment typically ranges from, e.g.,  $T \approx 50$  ms in passenger cabins of vehicles to  $T > 1$  s in public halls. With the theoretical length estimation of the adaptive filter order  $N_h$ ,

$$N_h \approx \frac{ERLE}{60} \cdot f_s \cdot T,$$

where ERLE is the desired echo suppression of the AEC in dB; as a rule of thumb it becomes obvious that with many realistic acoustic environment and sampling rates  $f_s = 4-48$  kHz, adaptive FIR filters with several thousands coefficients are needed to achieve  $ERLE \approx 20$  dB. Obviously, too long adaptive filter order is not practical not only in the sense of the complexity but also of the convergence time. For environments with long reverberation times, this means that the time for convergence—even for fast converging adaptation algorithms—cannot be neglected and that, after a change of echo paths, noticeable residual echoes may be present until the adaptation algorithm is re-converged.

**[0030]** The presence of disturbing sources such as desired speech, interference, or ambient noise may lead to instability and divergence of the adaptive filter. To prevent the instability, adaptation control mechanisms are required which adjust the stepsize of the adaptation algorithm to the present acoustic conditions. With a decrease in the power ratio of acoustic echoes and disturbance, a smaller stepsize becomes mandatory, which however increases the time until the adaptive filter have converged to efficient echo path models. As the above discussion about adaptive filtering for acoustic echo cancellation shows, the convergence time of the adaptive filter is a crucial factor in acoustic echo cancellation and limits the performance of AECs in realistic acoustic environments. With the aim of reducing the convergence time while assuring robustness against instabilities and divergence even during double talk, various adaptation algorithms have been studied in public literatures and articles for realizations in the time domain and or in the frequency domain.

**[0031]** Even with fast converging adaptation algorithms, there are typically residual echoes present at the output of the AEC. Furthermore, it is desirable to combine the echo cancellation with noise reduction. Therefore, post echo and noise reduction is often cascaded with the AEC to suppress the residual echoes and noise at the AEC output. These methods are typically based on spectral subtraction or Wiener filtering so that estimates of the noise spectrum and of the spectrum of

the acoustic echoes at the AEC output are required. These are often difficult to obtain in a single-microphone system for time-varying noise spectra and frequently changing echo paths.

[0032] As mentioned above, the echo reverberation time mainly depends on the location of the loudspeaker and the microphones, ranging from, e.g.,  $T \approx 50$  ms in passenger cabins of vehicles to  $T > 1$  s in public halls. Usually, since the location does not change quickly, the echo reverberation time length does not change quickly either; this allows the echo cancellation system switches to another mode when the echo reverberation time length is detected very long. When the case of long echo reverberation time happens, one way to keep the efficiency of the echo cancellation is to increase the order of the adaptive filter; however, this may not be realistic because of two reasons: (1) too high order of the adaptive filter causes too high complexity; (2) too high order of the adaptive filter causes too slow adaptation convergence of the adaptive filter. A common order of the adaptive filter is about few hundreds; an order of few thousands is definitely too high in real applications of the adaptation algorithms for the adaptive filter. The invention will propose a simple and realistic approach to compensate for long echo reverberation time. When the case of long echo reverberation time happens, the deficiency of the echo cancellation with a normal order of adaptive filter is due to the “tail length” difference between the reference signal (Rx signal fed to the speaker) and the input signal from microphones (Tx signal with echoes): voice segments of Tx signal could have a long time tail while voice segments of Rx signal has a short time tail or no time tail; the echo replica signal output from the adaptive filter could not produce the long time tail as the order of adaptive filter is limited. An example has been shown in FIG. 6 wherein the first row of signal is a Tx signal containing echoes with a reverberation echo tail at the end of the voice segment and the second row of signal is a Rx signal without a tail at the end; the third row of signal is a pre-processed Rx signal used as the reference signal with a longer tail than the initial Rx signal. Experiments show that a shorter order of the adaptive filter is required to achieve the same performance if using the pre-processed Rx signal to replace the initial Rx signal as the reference signal.

[0033] FIG. 7 shows a basic structure of AEC with pre-processing of the reference signal. To limit the computational complexity, ‘beamforming first’ system is adopted. The microphone array signals 701 are processed first by the simplified adaptive beamformer to get a noise-reduced Tx signal 702; Rx signal 703 is pre-processed first before used as the AEC reference signal 704; the pre-processed signal 704 is not only employed as the reference signal for the adaptive filter but also for the post residual/noise suppression; the echo-noise-reduced signal 705 is further post-processed to suppress the residual echo and noise, and obtain the final echo/noise suppressed Tx signal 706.

[0034] FIG. 8 shows an example general procedure of doing the pre-processing of the AEC reference signal. The case of long echo reverberation time is detected by analyzing the Tx signal 802 and the Rx signal 801; if the case of long echo reverberation time is confirmed, a strong long-term filter is applied to the Rx signal to obtain the strongly pre-processed reference signal 804; otherwise, a weak long-term filter is applied to the Rx signal to obtain the weakly pre-processed reference signal 803; the final reference signal 805 is selected between the weakly pre-processed reference signal 803 and

the strongly pre-processed reference signal 804, depending on the detection result of long echo reverberation time.

[0035] The purpose of the long-term filter in FIG. 8 is to increase the “tail length” of the reference signal. An example of weak long-term filter could be

$$LTF(z) = 1 + 0.08(1 - 0.5z^{-1})z^{-256} \quad (1)$$

An example of relatively strong long-term filter could be

$$LTF(z) = 1 + 0.125(1 - 0.5z^{-1})z^{-256} \quad (2)$$

In (1) and (2), the high-pass filter  $(1 - 0.5z^{-1})$  reflects the fact that the high frequency area often has stronger echoes and longer echo reverberation time tail than the low frequency area.

[0036] FIG. 9 illustrates a communication system 10 according to an embodiment of the present invention.

[0037] Communication system 10 has audio access devices 7 and 8 coupled to a network 36 via communication links 38 and 40. In one embodiment, audio access device 7 and 8 are voice over internet protocol (VOIP) devices and network 36 is a wide area network (WAN), public switched telephone network (PTSN) and/or the internet. In another embodiment, communication links 38 and 40 are wireline and/or wireless broadband connections. In an alternative embodiment, audio access devices 7 and 8 are cellular or mobile telephones, links 38 and 40 are wireless mobile telephone channels and network 36 represents a mobile telephone network.

[0038] The audio access device 7 uses a microphone 12 to convert sound, such as music or a person’s voice into an analog audio input signal 28. A microphone interface 16 converts the analog audio input signal 28 into a digital audio signal 33 for input into an encoder 22 of a CODEC 20. The encoder 22 can include a speech enhancement block which reduces noise/interferences in the input signal from the microphone(s). The encoder 22 produces encoded audio signal TX for transmission to a network 26 via a network interface 26 according to embodiments of the present invention. A decoder 24 within the CODEC 20 receives encoded audio signal RX from the network 36 via network interface 26, and converts encoded audio signal RX into a digital audio signal 34. The speaker interface 18 converts the digital audio signal 34 into the audio signal 30 suitable for driving the loudspeaker 14.

[0039] In embodiments of the present invention, where audio access device 7 is a VOIP device, some or all of the components within audio access device 7 are implemented within a handset. In some embodiments, however, microphone 12 and loudspeaker 14 are separate units, and microphone interface 16, speaker interface 18, CODEC 20 and network interface 26 are implemented within a personal computer. CODEC 20 can be implemented in either software running on a computer or a dedicated processor, or by dedicated hardware, for example, on an application specific integrated circuit (ASIC). Microphone interface 16 is implemented by an analog-to-digital (A/D) converter, as well as other interface circuitry located within the handset and/or within the computer. Likewise, speaker interface 18 is implemented by a digital-to-analog converter and other interface circuitry located within the handset and/or within the computer. In further embodiments, audio access device 7 can be implemented and partitioned in other ways known in the art.

[0040] In embodiments of the present invention where audio access device 7 is a cellular or mobile telephone, the elements within audio access device 7 are implemented within a cellular handset. CODEC 20 is implemented by

software running on a processor within the handset or by dedicated hardware. In further embodiments of the present invention, audio access device may be implemented in other devices such as peer-to-peer wireline and wireless digital communication systems, such as intercoms, and radio handsets. In applications such as consumer audio devices, audio access device may contain a CODEC with only encoder 22 or decoder 24, for example, in a digital microphone system or music playback device. In other embodiments of the present invention, CODEC 20 can be used without microphone 12 and speaker 14, for example, in cellular base stations that access the PTSN.

[0041] The speech processing for reducing noise/interference described in various embodiments of the present invention may be implemented in the encoder 22 or the decoder 24, for example. The speech processing for reducing noise/interference may be implemented in hardware or software in various embodiments. For example, the encoder 22 or the decoder 24 may be part of a digital signal processing (DSP) chip.

[0042] FIG. 10 illustrates a block diagram of a processing system that may be used for implementing the devices and methods disclosed herein. Specific devices may utilize all of the components shown, or only a subset of the components, and levels of integration may vary from device to device. Furthermore, a device may contain multiple instances of a component, such as multiple processing units, processors, memories, transmitters, receivers, etc. The processing system may comprise a processing unit equipped with one or more input/output devices, such as a speaker, microphone, mouse, touchscreen, keypad, keyboard, printer, display, and the like. The processing unit may include a central processing unit (CPU), memory, a mass storage device, a video adapter, and an I/O interface connected to a bus.

[0043] The bus may be one or more of any type of several bus architectures including a memory bus or memory controller, a peripheral bus, video bus, or the like. The CPU may comprise any type of electronic data processor. The memory may comprise any type of system memory such as static random access memory (SRAM), dynamic random access memory (DRAM), synchronous DRAM (SDRAM), read-only memory (ROM), a combination thereof, or the like. In an embodiment, the memory may include ROM for use at boot-up, and DRAM for program and data storage for use while executing programs.

[0044] The mass storage device may comprise any type of storage device configured to store data, programs, and other information and to make the data, programs, and other information accessible via the bus. The mass storage device may comprise, for example, one or more of a solid state drive, hard disk drive, a magnetic disk drive, an optical disk drive, or the like.

[0045] The video adapter and the I/O interface provide interfaces to couple external input and output devices to the processing unit. As illustrated, examples of input and output devices include the display coupled to the video adapter and the mouse/keyboard/printer coupled to the I/O interface. Other devices may be coupled to the processing unit, and additional or fewer interface cards may be utilized. For example, a serial interface such as Universal Serial Bus (USB) (not shown) may be used to provide an interface for a printer.

[0046] The processing unit also includes one or more network interfaces, which may comprise wired links, such as an Ethernet cable or the like, and/or wireless links to access

nodes or different networks. The network interface allows the processing unit to communicate with remote units via the networks. For example, the network interface may provide wireless communication via one or more transmitters/transmit antennas and one or more receivers/receive antennas. In an embodiment, the processing unit is coupled to a local-area network or a wide-area network for data processing and communications with remote devices, such as other processing units, the Internet, remote storage facilities, or the like.

[0047] While this invention has been described with reference to illustrative embodiments, this description is not intended to be construed in a limiting sense. Various modifications and combinations of the illustrative embodiments, as well as other embodiments of the invention, will be apparent to persons skilled in the art upon reference to the description. For example, various embodiments described above may be combined with each other.

[0048] Although the present invention and its advantages have been described in detail, it should be understood that various changes, substitutions and alterations can be made herein without departing from the spirit and scope of the invention as defined by the appended claims. For example, many of the features and functions discussed above can be implemented in software, hardware, or firmware, or a combination thereof. Moreover, the scope of the present application is not intended to be limited to the particular embodiments of the process, machine, manufacture, composition of matter, means, methods and steps described in the specification. As one of ordinary skill in the art will readily appreciate from the disclosure of the present invention, processes, machines, manufacture, compositions of matter, means, methods, or steps, presently existing or later to be developed, that perform substantially the same function or achieve substantially the same result as the corresponding embodiments described herein may be utilized according to the present invention. Accordingly, the appended claims are intended to include within their scope such processes, machines, manufacture, compositions of matter, means, methods, or steps.

What is claimed is:

1. A method for cancelling/reducing acoustic echoes in speech/audio signal enhancement processing, the method comprising:

pre-processing a reference signal with a fixed long-term filter;

using the pre-processed reference signal to excite an adaptive filter wherein the output of the adaptive filter forms a replica signal of acoustic echo and/or acoustic echo tail;

subtracting the replica signal of acoustic echo and/or acoustic echo tail from a microphone input signal to suppress the acoustic echo and/or acoustic echo tail in the microphone input signal.

2. The method of claim 1, wherein cancelling/reducing acoustic echoes may happen after cancelling/reducing disturbing noises.

3. The method of claim 1, wherein cancelling/reducing acoustic echoes may happen before cancelling/reducing disturbing noises.

4. The method of claim 1, wherein the fixed long-term filter is

$$LTF(z)=1+0.08(1-0.5z^{-1})z^{-256}$$

5. The method of claim 1, wherein the fixed long-term filter is

$$LTF(z)=1+0.125(1-0.5z^{-1})z^{-256}$$

6. The method of claim 1, wherein the coefficients of the adaptive filter is updated in echo signal area.

7. A method for cancelling/reducing acoustic echoes in speech/audio signal enhancement processing, the method comprising:

selecting a long-term filter based on an echo tail length detection or an echo reverberation time detection of an microphone input signal;

pre-processing a reference signal with the selected long-term filter;

using the pre-processed reference signal to excite an adaptive filter wherein the output of the adaptive filter forms a replica signal of acoustic echo and/or acoustic echo tail;

subtracting the replica signal of acoustic echo and/or acoustic echo tail from a microphone input signal to suppress the acoustic echo and/or acoustic echo tail in the microphone input signal.

8. The method of claim 7, wherein the echo tail length or the echo reverberation time is detected by analyzing and comparing the microphone input signal and a received signal which is sent to a speaker.

9. The method of claim 7, wherein the strong long-term filter is selected:

$$LTF(z)=1+0.125(1-0.5z^{-1})z^{-256}$$

if the detected echo tail length or the detected echo reverberation time is long.

10. The method of claim 7, wherein the weak long-term filter is selected:

$$LTF(z)=1+0.08(1-0.5z^{-1})z^{-256}$$

if the detected echo tail length or the detected echo reverberation time is not long.

11. The method of claim 7, wherein cancelling/reducing acoustic echoes may happen after cancelling/reducing disturbing noises.

12. The method of claim 7, wherein cancelling/reducing acoustic echoes may happen before cancelling/reducing disturbing noises.

13. The method of claim 7, wherein the coefficients of the adaptive filter is updated in echo signal area.

14. A speech signal processing apparatus comprising: a processor; and a computer readable storage medium storing programming for execution by the processor, the programming including instructions to:

select a long-term filter based on an echo tail length detection or an echo reverberation time detection of an microphone input signal;

pre-process a reference signal with the selected long-term filter;

use the pre-processed reference signal to excite an adaptive filter wherein the output of the adaptive filter forms a replica signal of acoustic echo and/or acoustic echo tail; subtract the replica signal of acoustic echo and/or acoustic echo tail from a microphone input signal to suppress the acoustic echo and/or acoustic echo tail in the microphone input signal.

15. The method of claim 14, wherein the echo tail length or the echo reverberation time is detected by analyzing and comparing the microphone input signal and a received signal which is sent to a speaker.

16. The method of claim 14, wherein the strong long-term filter is selected:

$$LTF(z)=1+0.125(1-0.5z^{-1})z^{-256}$$

if the detected echo tail length or the detected echo reverberation time is long.

17. The method of claim 14, wherein the weak long-term filter is selected:

$$LTF(z)=1+0.08(1-0.5z^{-1})z^{-256}$$

if the detected echo tail length or the detected echo reverberation time is not long.

18. The method of claim 14, wherein cancelling/reducing acoustic echoes may happen after cancelling/reducing disturbing noises.

19. The method of claim 14, wherein cancelling/reducing acoustic echoes may happen before cancelling/reducing disturbing noises.

20. The method of claim 14, wherein the coefficients of the adaptive filter is updated in echo signal area.

\* \* \* \* \*