



(19) **United States**

(12) **Patent Application Publication**
NOH

(10) **Pub. No.: US 2014/0200769 A1**

(43) **Pub. Date: Jul. 17, 2014**

(54) **UNPARKING CONTROL SYSTEM AND UNPARKING CONTROL METHOD USING THE SAME**

(52) **U.S. Cl.**
CPC *B62D 15/0285* (2013.01)
USPC **701/41**

(71) Applicant: **MANDO CORPORATION,**
Pyeongtaek-si (KR)

(57) **ABSTRACT**

(72) Inventor: **TAE BONG NOH,** Yongin-si (KR)

(73) Assignee: **MANDO CORPORATION,**
Pyeongtaek-si (KR)

Provided is an unparking control system capable of unparking a vehicle from a parking space safely, conveniently and quickly through a reduced number of unparking control steps, and an unparking control method using the same. The unparking control system includes: a parking control device configured to measure distances from front and rear objects positioned around a vehicle, determine an initial unparking direction and whether to perform steering control according to whether a front distance among the measured distances exceeds a preset reference distance, and generate and provide a steering control signal based on the determined initial unparking direction and whether to perform steering control; and an electronic control steering device configured to adjust a steering angle according to the steering control signal provided by the parking control device.

(21) Appl. No.: **14/154,807**

(22) Filed: **Jan. 14, 2014**

(30) **Foreign Application Priority Data**

Jan. 17, 2013 (KR) 10-2013-0005498

Publication Classification

(51) **Int. Cl.**
B62D 15/02 (2006.01)

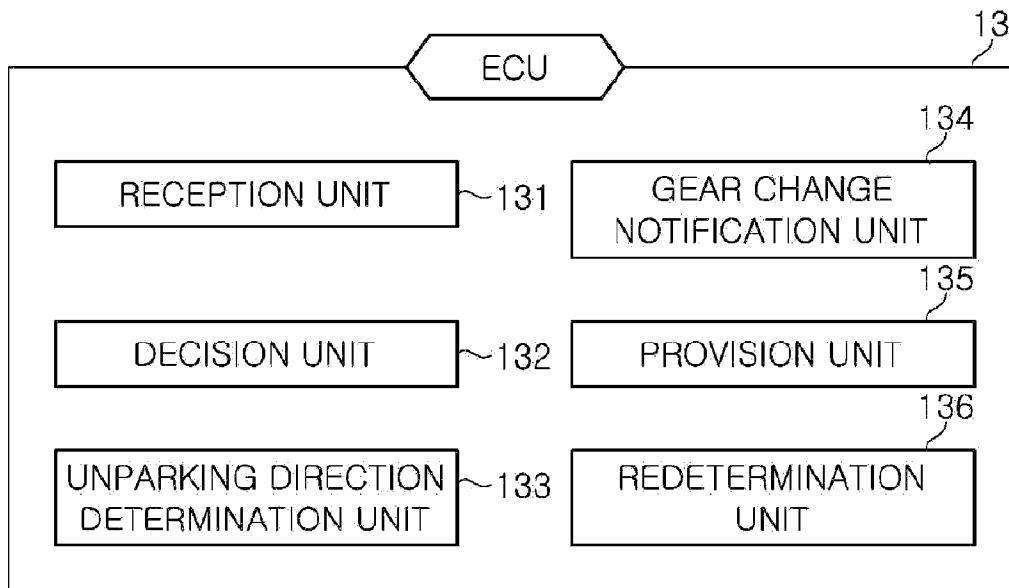


Fig. 1

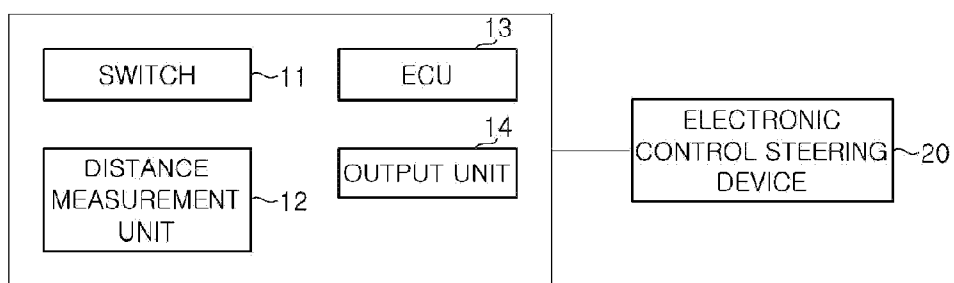


Fig. 2

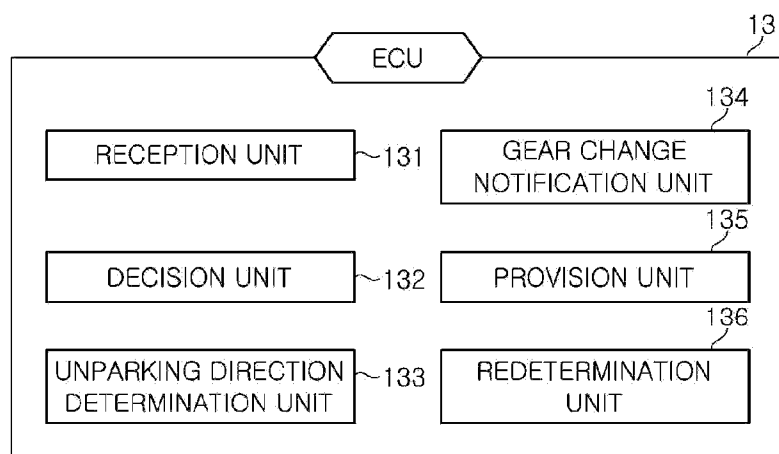


Fig. 3

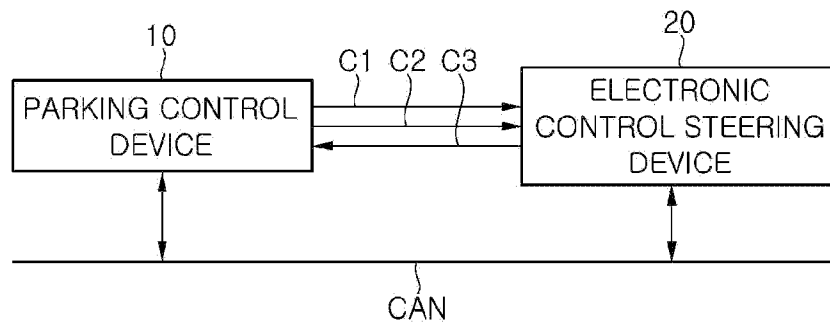


Fig. 4

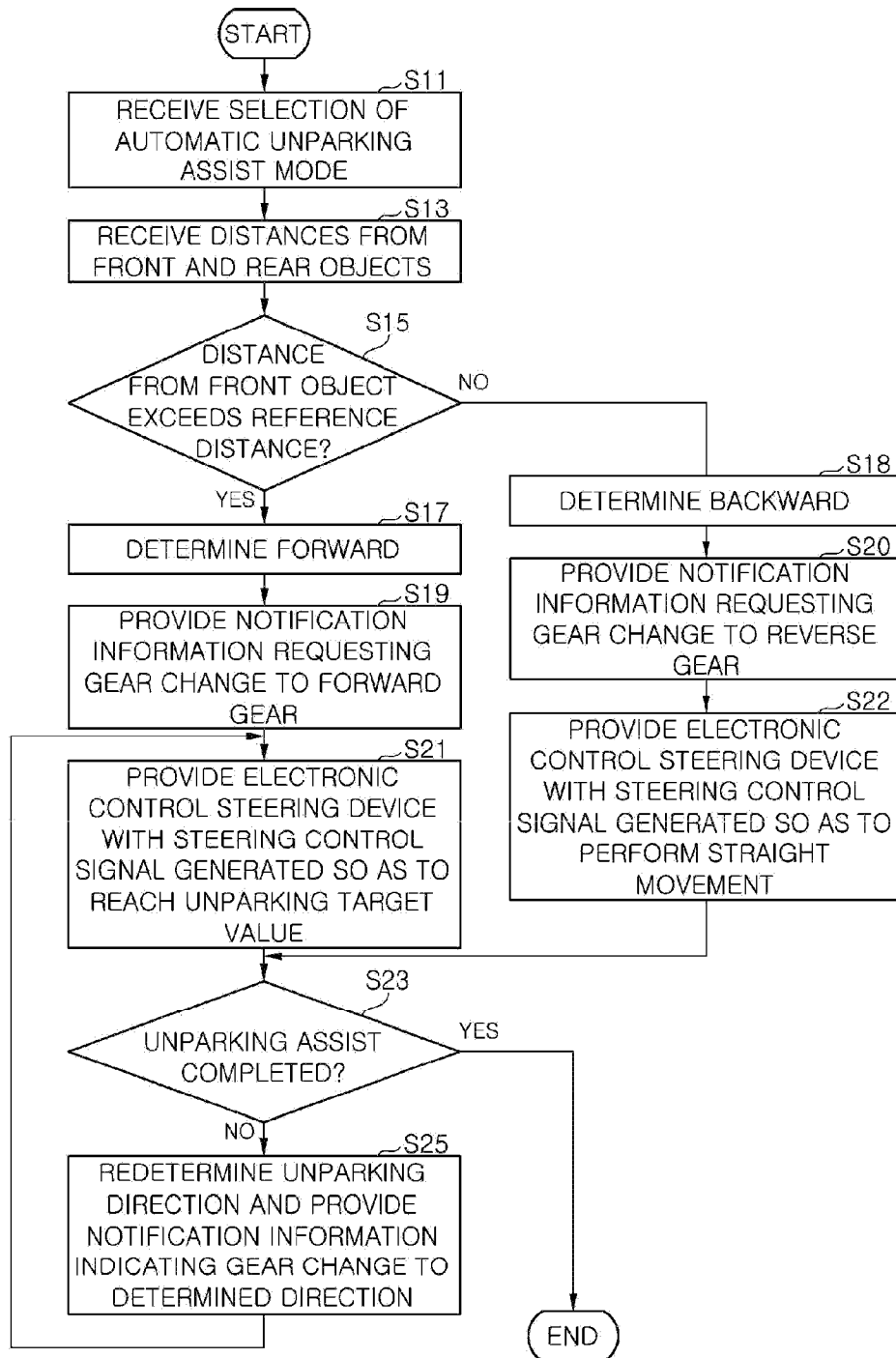


Fig. 5

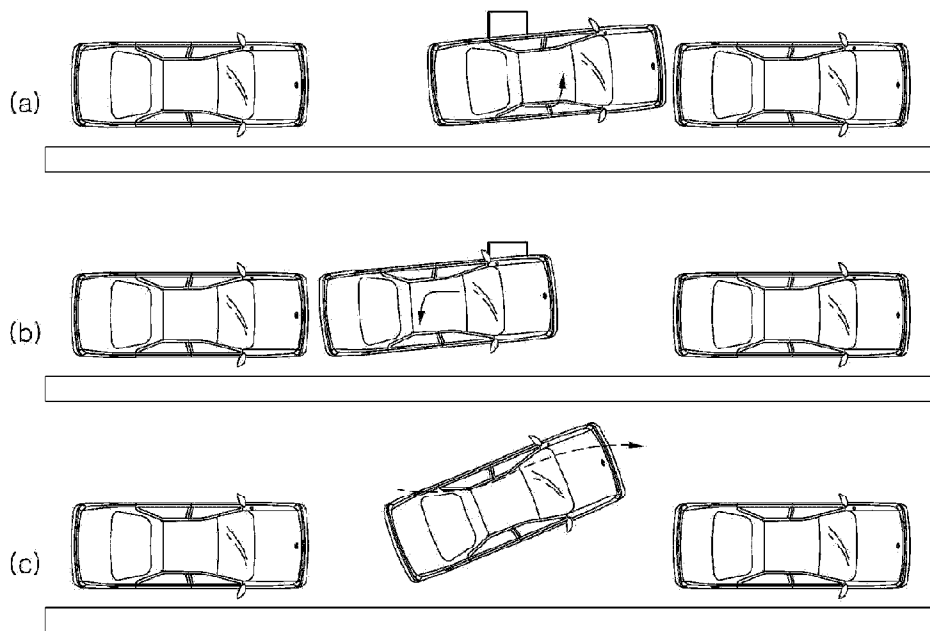
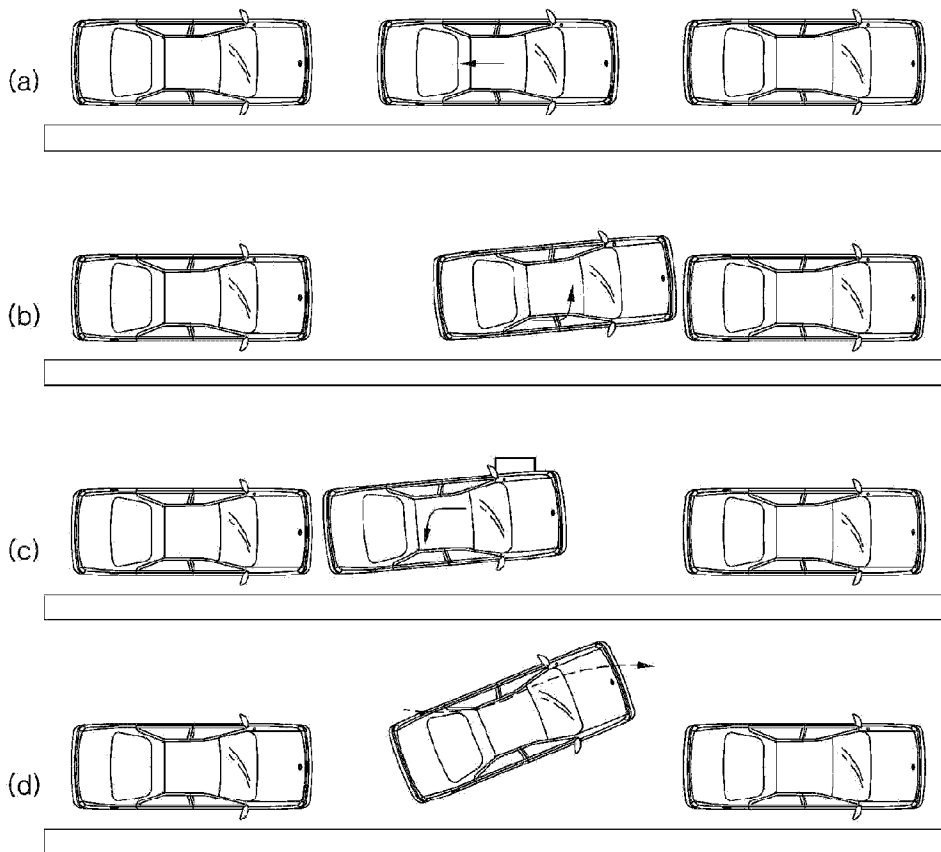


Fig. 6



**UNPARKING CONTROL SYSTEM AND
UNPARKING CONTROL METHOD USING
THE SAME**

CROSS-REFERENCE(S) TO RELATED
APPLICATION

[0001] This application claims the benefit of Korean Patent Application No. 10-2013-0005496, filed on Jan. 17, 2013, in the Korean Intellectual Property Office, the contents of which are incorporated herein by reference in its entirety.

BACKGROUND OF THE INVENTION

[0002] 1. Field of the Invention

[0003] The present invention relates to an unparking control system and an unparking control method using the same, and more particularly, to an unparking control system capable of unparking a vehicle from a parking space safely, conveniently and quickly through a reduced number of unparking control steps, and an unparking control method using the same.

[0004] 2. Description of the Related Art

[0005] Vehicles are everyday necessities in modern times, and a growing number of vehicles coming to markets and running on streets generate various social issues, including traffic congestion and parking problems.

[0006] Particularly, the parking problems are so serious that parking spaces are reduced as vehicles are increased in a limited region, city, or nation. The decreasing parking spaces inevitably reduce the size of each parking slot in which one vehicle can be parked.

[0007] In the case of a parking space which is not divided into parking slots, a number of vehicles are supposed to be parked at narrow intervals, making it difficult for drivers to park or unpark their vehicles in or from the narrow parking space manually while checking nearby obstacles.

[0008] Therefore, a technology has recently been developed and commercialized, which equips a vehicle with an automatic parking assist system so that the system takes pictures of the periphery of the vehicle, checks the pictures, and performs automatic parking.

[0009] However, such a conventional automatic parking assist system has the following problem: it initially selects the reverse gear, as the condition of automatic steering entrance, and performs backward control; this means that, when there is a curb opposite the unparking direction, any steering during the backward movement causes a contact between the curb and wheels and a resulting damage; and, if the vehicle is moved backwards straightly (without steering), any contact between the curb and wheels can be avoided, but the number of unparking control steps increases, slowing down the unparking process.

SUMMARY OF THE INVENTION

[0010] An aspect of the present invention is directed to an unparking control system capable of unparking a vehicle from a parking space safely, conveniently and quickly through a reduced number of unparking control steps, and an unparking control method using the same.

[0011] According to an embodiment of the present invention, an unparking control system includes: a parking control device configured to measure distances from front and rear objects positioned around a vehicle, determine an initial unparking direction and whether to perform steering control

according to whether a front distance among the measured distances exceeds a preset reference distance, and generate and provide a steering control signal based on the determined initial unparking direction and whether to perform steering control; and an electronic control steering device configured to adjust a steering angle according to the steering control signal provided by the parking control device.

[0012] First to third cables may be installed between the parking control device and the electronic control steering device. A steering request value of the parking control device may be transmitted to the electronic control steering device through the first cable. An SPAS mode value set for operation of forward unparking or backward unparking determined by the parking control device may be transmitted to the electronic control steering device through the second cable. A steering state value of the electronic control steering device may be transmitted to the parking control device through the third cable.

[0013] The parking control device may include: a distance measurement unit configured to measure distances from front and rear objects with reference to the vehicle; and an ECU configured to decide whether a distance from the front object, among the distances measured by the distance measurement unit, exceeds the reference distance, provide notification information indicating a gear change in conformity with an initial unparking direction determined as a result of the decision, generate a steering control signal for reaching an unparking target value when the initial unparking direction is forward, and provide the electronic control steering device with the generated steering control signal.

[0014] The parking control device may include: a switch provided on the vehicle and used to perform an automatic unparking assist mode; and an output unit configured to output the notification information during operation in the automatic unparking assist mode according to a selection by the switch.

[0015] The ECU may include: a reception unit configured to receive distances from front and rear objects measured by the distance measurement unit; a decision unit configured to decide whether the distance from the front object received from the reception unit exceeds the preset reference distance; an unparking direction determination unit configured to determine that the initial unparking direction is forward, when the decision unit decides that the received distance from the front object exceeds the preset reference distance, and set an SPAS mode value for operation of forward unparking; or determine that the initial unparking direction is backward, when the decision unit decides that the received distance from the front object is below the preset reference distance, and set an SPAS mode value for operation of backward unparking; a gear change notification unit configured to output notification information requesting a gear change so that the movement direction of the vehicle is changed to the initial unparking direction determined by the unparking direction determination unit; and a provision unit configured to generate a steering control signal so as to reach an unparking target value of the vehicle in conformity with the initial unparking direction after a gear change is made in response to an output from the gear change notification unit and provide the electronic control steering device with the generated steering control signal.

[0016] The provision unit may be configured to generate a steering control signal for reaching the unparking target value when the unparking direction determination unit has determined that the initial unparking direction is forward or gen-

erate a steering control signal of “0” for straight movement when the unparking direction determination unit has determined that the initial unparking direction is backward.

[0017] The ECU may include a redetermination unit configured to decide whether unparking assist has been completed after backward unparking or forward unparking is performed according to the steering control signal provided by the provision unit and, when unparking assist has not been completed, redetermine an unparking direction and a steering control signal for reaching an unparking target value based on distances between the vehicle in a position after movement and front and rear objects.

[0018] According to another embodiment of the present invention, an unparking control system includes: a reception unit configured to receive distances from front and rear objects measured by a distance measurement unit configured to measure distances from front and rear objects with reference to a vehicle; a decision unit configured to decide whether the distance from the front object received from the reception unit exceeds the preset reference distance; an unparking direction determination unit configured to determine that the initial unparking direction is forward, when the decision unit decides that the received distance from the front object exceeds the preset reference distance, and set an SPAS mode value for operation of forward unparking; or determine that the initial unparking direction is backward, when the decision unit decides that the received distance from the front object is below the preset reference distance, and set an SPAS mode value for operation of backward unparking; a gear change notification unit configured to output notification information requesting a gear change so that the movement direction of the vehicle is changed to the initial unparking direction determined by the unparking direction determination unit; and a provision unit configured to generate a steering control signal so as to reach an unparking target value of the vehicle in conformity with the initial unparking direction after a gear change is made in response to an output from the gear change notification unit and provide the electronic control steering device with the generated steering control signal.

[0019] According to another embodiment of the present invention, an unparking control method using an unparking control system includes: measuring distances from front and rear objects positioned around a vehicle; determining an initial unparking direction and whether to perform steering control according to whether the distance from the front object, among the measured distances, exceeds a preset reference distance; and generating a steering control signal according to the determined initial unparking direction and whether to perform steering control and providing an electronic control steering device with the generated steering control signal.

[0020] The determining may include: receiving the distances from front and rear objects measured during the measuring; deciding whether the received distance from the front object exceeds the preset reference distance; determining that the initial unparking direction is forward, when it is decided during the deciding that the received distance from the front object exceeds the preset reference distance, and setting an SPAS mode value for operation of forward unparking, or determining that the initial unparking direction is backward, when the received distance from the front object is below the preset reference distance, and setting an SPAS value for operation of backward unparking; and outputting notification

information requesting a gear change so that the movement direction of the vehicle is changed to the determined initial unparking direction.

[0021] During the generating, a steering control signal may be generated so as to reach an unparking target value of the vehicle in conformity with the initial unparking direction after a gear change is made according to the notification information, and the electronic control steering device may be provided with the generated steering control signal.

[0022] During the generating, a steering control signal may be generated for reaching the unparking target value, when it is determined during the determining that the initial unparking direction is forward, or a steering control signal of “0” may be generated for straight movement, when it is determined during the determining that the initial unparking direction is backward.

[0023] The unparking control method may further include, after the generating: deciding whether unparking assist has been completed after backward unparking or forward unparking is performed according to the steering control signal; and redetermining an unparking direction and a steering control signal for reaching an unparking target value based on distances between the vehicle in a position after movement and front and rear objects when unparking assist has not been completed.

BRIEF DESCRIPTION OF THE DRAWINGS

[0024] FIG. 1 is a diagram illustrating an unparking control system according to an embodiment of the present invention.

[0025] FIG. 2 is a diagram illustrating an ECU of FIG. 1.

[0026] FIG. 3 is a diagram illustrating a state of connection between the parking control device and the electronic control steering device of FIG. 1.

[0027] FIG. 4 is an operation flowchart illustrating an unparking control method using an unparking control system according to an embodiment of the present invention.

[0028] FIGS. 5A to 5C are drawings illustrating a case where an initial unparking direction is forward.

[0029] FIGS. 6A to 6D are drawings illustrating a case where an initial unparking direction is backwards.

DETAILED DESCRIPTION OF EXEMPLARY EMBODIMENTS

[0030] Exemplary embodiments of the present invention will be described below in detail with reference to the accompanying drawings.

[0031] FIG. 1 is a diagram illustrating an unparking control system according to an embodiment of the present invention, FIG. 2 is a diagram illustrating an ECU of FIG. 1, and FIG. 3 is a diagram illustrating a state of connection between the parking control device and the electronic control steering device of FIG. 1.

[0032] Referring to FIG. 1, an unparking control system according to an embodiment of the present invention includes a parking control device 10 and an electronic control steering device 20. The parking control device 10 is a Smart Parking Assist System (SPAS). The electronic control steering device 20 is configured to adjust a steering angle according to a steering control signal provided from the parking control device 10.

[0033] The parking control device 10 includes a switch 11 configured to switch the operation between an automatic parking assist mode and an automatic unparking assist mode,

a distance measurement unit 12 configured to measure distances from objects positioned around the vehicle, an Electronic Control Unit (ECU) 13 configured to compare the distance from a front object, which has been measured by the distance measurement unit 12, with a preset reference distance, determine the unparking direction and whether to perform steering control, and provide the electronic control steering device with a steering control signal based on the determination; and an output unit 14 configured to output notification information generated by control of the ECU 13.

[0034] The switch 11 may be installed inside the vehicle or displayed on a terminal (not illustrated) installed inside the vehicle so that the driver can select “unparking mode”, “PAS on/off”, or “IPAS start/stop”. When the driver selects the automatic unparking assist mode (park out mode), the ECU 13 performs unparking control so that the vehicle can be unparked from the parking space quickly. When a steering angle is input as desired by the driver during the automatic unparking assist mode, the ECU 13 switches to a manual unparking mode.

[0035] The distance measurement unit 12 is configured to measure distances from front and rear objects with reference to the vehicle within the parking space after the automatic unparking assist mode is selected by the switch 11. The distance measurement unit 12 can be a sensor capable of measuring distances from front and rear objects, for example, an ultrasonic sensor. The size of the parking space may be measured by the distance measurement unit 12.

[0036] Furthermore, the distance measurement unit 12 can include at least two side sensors mounted on the sides of the vehicle and at least two front and rear sensors mounted on the front and back of the vehicle. The side sensors and the front and rear sensors are connected to the ECU 13 via an interface, for example, Local Interconnect Network (LIN).

[0037] The output unit 14 can be a speaker, a screen of a terminal installed inside the vehicle, or a combination thereof.

[0038] Referring to FIG. 2, the ECU 13 includes a reception unit 131, a decision unit 132, an unparking direction determination unit 133, a gear change notification unit 134, a provision unit 135, and a redetermination unit 136.

[0039] The reception unit 131 is configured to receive a signal generated when a switch 11 for operation in the automatic unparking assist mode is selected from a plurality of switches 11 installed inside the vehicle. The reception unit 131 is also configured to receive a result of measuring distances between the vehicle and front and rear objects by the distance measurement unit 12.

[0040] The decision unit 132 is configured to decide whether the distance from the front object, which has been received by the reception unit 131, exceeds a preset reference distance. The reference distance is a distance that can be measured by the distance measurement unit 12, for example, 30 cm.

[0041] When it is decided by the decision unit 132 that the distance from the front object inside the parking space is below the preset reference distance, the unparking direction determination unit 133 determines that the initial unparking direction is backward.

[0042] When it is decided by the decision unit 132 that the distance from the front object inside the parking space exceeds the preset reference distance, the unparking direction determination unit 133 determines that the initial unparking direction is forward.

[0043] When the initial unparking direction is determined as being backward or forward as a result of the above-mentioned decision of the decision unit 132, the electronic control steering device 20 is provided with an SPAS mode value, which has been set for operation in the determined initial unparking direction.

[0044] FIG. 3 is a diagram illustrating a state of connection between the parking control device 10 and the electronic control steering device 20.

[0045] Referring to FIG. 3, a plurality of cables C1 to C3 are connected between the parking control device 10 and the electronic control steering device 20. Specifically, the first cable C1 is used to transmit an SPAS steering request value from the parking control device 10 to the electronic control steering device 20. The SPAS steering request value refers to a steering setup value indicating whether automatic steering or manual steering.

[0046] The second cable C2 is used to transmit the above-mentioned SPAS mode value from the parking control device 10 to the electronic control steering device 20. The SPAS mode value indicates one of backward parking, forward unparking, and backward unparking; for example, the SPAS mode value can be set in the following manner: “1” indicates backward parking, “3” indicates forward unparking, and “2” indicates backward unparking; and the SPAS mode value is transmitted to the electronic control steering device 20 through the second cable C2. The electronic control steering device 20 recognizes, when the SPAS mode value is “2”, that steering control is not performed or recognizes, when the SPAS mode value is “1” or “3”, that the steering angle is to be adjusted according to a steering control signal provided by the parking control device 10.

[0047] The third cable C3 is used to transmit a steering state value from the electronic control steering device 20 to the parking control device 10. The steering state value indicates whether the electronic control steering device 20 adjusts the steering angle manually or automatically.

[0048] The parking control device 10 and the electronic control steering device 20 are also connected by a CAN to be able to communicate with each other. As a result, the parking control device 10 can receive gear position information, vehicle velocity, steering angle, information regarding the position of the vehicle after movement, and the like through the CAN, and the electronic control steering device 20 similarly receives information (for example, steering angle) necessary to adjust the steering angle through the CAN.

[0049] When it is determined that the initial unparking direction is backward or forward, the gear change notification unit 134 outputs notification information requesting a gear change in the initial unparking direction determined by the unparking direction determination unit 133, for example, notification information requesting a gear change to a reverse gear or a forward gear, to the output unit 14, for example, a speaker or a screen of a terminal installed inside the vehicle. That is, the gear change notification unit 134 provides notification information indicating a gear change so that the vehicle movement direction is changed to the unparking direction determined by the unparking direction determination unit 133 through a HMI (Human Machine Interface) 15.

[0050] As used herein, the initial unparking direction refers to a direction of movement initially tried by the vehicle parked in a parking space.

[0051] The provision unit 135 provides, when the initial unparking direction is backward, the electronic control steer-

ing device 20 with a steering control signal of “0” or generates, when the unparking direction is forward, a steering control signal so as to reach the unparking target value based on consideration of the distance from the front object received by the reception unit 131 and provides the electronic control steering device 20 with the generated steering control signal.

[0052] The redetermination unit 136 then decides whether unparking assist has been completed after the vehicle has been unparked forwards or backwards in the initial unparking direction; when the unparking assist has not been completed, the redetermination unit 136 measures distances between the vehicle in the position after movement and front and rear objects using the distance measurement unit 12 and determines the unparking direction and a steering control signal for reaching the unparking target value. The electronic control steering device 20 is provided with the steering control signal determined in this manner, and the driver can be informed of the unparking direction through the gear change notification unit 134.

[0053] The redetermination unit 136 determines the position of the vehicle, which has moved from the initial position, based on information received from at least one of a steering angle sensor installed inside the vehicle, a wheel sensor, a yaw sensor, a gear position measurement sensor, and a G sensor; when unparking assist has not been completed in the determined position, the redetermination unit 136 generates a steering control signal for reaching the unparking target value in the forward or backward unparking direction and provides the electronic control steering device 20 with the generated steering control signal.

[0054] An unparking control method using the unparking control system configured as described above will now be described with reference to FIG. 4.

[0055] Referring to FIG. 4, the ECU 13 of the parking control device 10 receives a selection of the automatic unparking assist mode through a switch 11 installed inside the vehicle or a menu displayed on the screen of a terminal installed inside the vehicle (S11).

[0056] The ECU 13 receives a measurement result from the distance measurement unit 12, which has measured distances from front and rear objects with reference to the vehicle (S13). The distance measurement unit 12 can include all of sensors for measuring distances from front and rear objects and sensors for measuring distances from side objects.

[0057] The ECU 13 receives a result of measurement by the distance measurement unit 12 and decides whether the distance from the front object exceeds a preset reference distance (S15). The reference distance can be a distance that can be measured by the distance measurement unit 12, for example, 30 cm.

[0058] When it is decided at step S15 that the distance from the front object exceeds the reference distance, the ECU 13 determines that the initial unparking direction is forward (S17). The ECU 13 provides the electronic control steering device 20 with an SPAS mode value set so that the vehicle is unparked forwards in the determined initial unparking direction.

[0059] When it is decided at step S15 that the distance from the front object is below the reference distance, the ECU 13 determines that the initial unparking direction is backward (S18). The ECU 13 provides the electronic control steering device 20 with an SPAS mode value set so that the vehicle is unparked backwards in the determined initial unparking direction.

[0060] When it is determined that the initial unparking direction is forward, the ECU 13 provides notification information requesting a gear change to a forward gear (S19). In this case, the ECU 13 can provide notification information when a gear change is necessary based on gear position information from the gear position measurement sensor.

[0061] After the above-described step S19, the ECU 13 provides the electronic control steering device 20 with a steering control signal generated so as to reach the unparking target value based on distances from front and rear objects measured by the distance measurement unit 12 (S21).

[0062] The ECU 13 then decides whether unparking assist has been completed (S23).

[0063] When it is decided at step S23 that unparking assist has not been completed, the ECU 13 redetermines the unparking direction and provides notification information indicating a gear change to the determined direction (S25). The ECU 13 then proceeds to step S21 and provides the electronic control steering device 20 with a steering control signal generated so as to reach the unparking target value, thereby adjusting the steering angle.

[0064] When the vehicle is unparked forwards as illustrated in FIG. 5A, the steering angle is adjusted according to the steering control signal provided to the electronic control steering device 20. In This case, the parking control device 10 transmits an SPAS steering request value, which has been designated as automatic steering, to the electronic control steering device 20.

[0065] When unparking is tried through forward steering control, as illustrated in FIG. 5A, but remains uncompleted, the electronic control steering device 20 is provided with a steering control signal generated so as to reach the unparking target value after a change to the reverse gear, and the vehicle is moved as illustrated in FIG. 5B. Such forward unparking reduces the number of unparking control steps.

[0066] Then, the steering angle can be adjusted as desired by the driver in the position illustrated in FIG. 5B, so that the vehicle can be unparked from the parking space as illustrated in FIG. 5C. In this case, the parking control device 10 transmits an SPAS steering request value, which has been designated as manual steering, to the electronic control steering device 20.

[0067] When it is determined that the initial unparking direction is backward, the ECU 13 provides notification information requesting a gear change to the reverse gear (S20). In this case, the ECU 13 can similarly receive current gear position information and, when the received gear position information indicates a forward gear, provide notification information requesting a change to the reverse gear. If the reverse gear has already been selected, notification information can be provided to indicate that the reverse gear has already been selected.

[0068] After the above-described step S20, the ECU 13 provides the electronic control steering device 20 with a steering control signal of “0” so that the vehicle is moved backwards straightly without steering angle control (S22). Then, the ECU 13 proceeds to the above-described step S23 and decides whether unparking assist has been completed.

[0069] When the vehicle is unparked backwards as illustrated in FIG. 6A, the vehicle is moved straightly according to the steering control signal “0” provided to the electronic control steering device 20. In this case, the parking control

device 10 transmits an SPAS steering request value, which has been designated as automatic steering, to the electronic control steering device 20.

[0070] When unparking is tried through backward straight movement as illustrated in FIG. 6A but remains uncompleted, the electronic control steering device 20 is provided with a steering control signal generated so as to reach the unparking target value after a change to a forward gear; the vehicle is moved as illustrated in FIG. 6B; the reverse gear is selected again as illustrated in FIG. 6C; and steering control is performed according to a steering control signal generated so as to reach the unparking target value.

[0071] Then, the steering angle can be adjusted as desired by the driver in the position illustrated in FIG. 6C, so that the vehicle can be unparked from the parking space as illustrated in FIG. 6D. In this case, the parking control device 10 transmits an SPAS steering request value, which has been designated as manual steering, to the electronic control steering device 20.

[0072] According to an embodiment of the present invention, there is an advantage in that a vehicle can be unparked from a parking space safely, conveniently and quickly through a reduced number of unparking control steps.

[0073] According to an embodiment of the present invention, there is another advantage in that the frequency of collision with curbs is reduced, compared with a conventional automatic parking assist system, by generating a steering control signal so as to reach the unparking target value in the case of forward unparking or by generating a steering control signal of "0" in the case of backward unparking.

[0074] While the embodiments of the present invention have been described with reference to the specific embodiments, it will be apparent to those skilled in the art that various changes and modifications may be made without departing from the spirit and scope of the invention as defined in the following claims.

| DESCRIPTION OF REFERENCE NUMERALS | |
|---|---------------------|
| 10: parking control device | 11: switch |
| 12: distance measurement unit | 13: ECU |
| 131: reception unit | 132: decision unit |
| 133: unparking direction determination unit | |
| 134: gear change notification unit | 135: provision unit |
| 136: redetermination unit | 14: output unit |
| 20: electronic control steering device | |

What is claimed is:

1. An unparking control system comprising:
 - a parking control device configured to measure distances from front and rear objects positioned around a vehicle, determine an initial unparking direction and whether to perform steering control according to whether a front distance among the measured distances exceeds a preset reference distance, and generate and provide a steering control signal based on the determined initial unparking direction and whether to perform steering control; and
 - an electronic control steering device configured to adjust a steering angle according to the steering control signal provided by the parking control device.
2. The unparking control system according to claim 1, wherein first to third cables are installed between the parking control device and the electronic control steering device,

- a steering request value of the parking control device is transmitted to the electronic control steering device through the first cable,
 - an SPAS mode value set for operation of forward unparking or backward unparking determined by the parking control device is transmitted to the electronic control steering device through the second cable, and
 - a steering state value of the electronic control steering device is transmitted to the parking control device through the third cable.
3. The unparking control system according to claim 1, wherein the parking control device comprises:
 - a distance measurement unit configured to measure distances from front and rear objects with reference to the vehicle; and
 - an ECU configured to decide whether a distance from the front object, among the distances measured by the distance measurement unit, exceeds the reference distance, provide notification information indicating a gear change in conformity with an initial unparking direction determined as a result of the decision, generate a steering control signal for reaching an unparking target value when the initial unparking direction is forward, and provide the electronic control steering device with the generated steering control signal.
 4. The unparking control system according to claim 3, wherein the parking control device comprises:
 - a switch provided on the vehicle and used to perform an automatic unparking assist mode; and
 - an output unit configured to output the notification information during operation in the automatic unparking assist mode according to a selection by the switch.
 5. The unparking control system according to claim 3, wherein the ECU comprises:
 - a reception unit configured to receive distances from front and rear objects measured by the distance measurement unit;
 - a decision unit configured to decide whether the distance from the front object received from the reception unit exceeds the preset reference distance;
 - an unparking direction determination unit configured to determine that the initial unparking direction is forward, when the decision unit decides that the received distance from the front object exceeds the preset reference distance, and set an SPAS mode value for operation of forward unparking; or determine that the initial unparking direction is backward, when the decision unit decides that the received distance from the front object is below the preset reference distance, and set an SPAS mode value for operation of backward unparking;
 - a gear change notification unit configured to output notification information requesting a gear change so that the movement direction of the vehicle is changed to the initial unparking direction determined by the unparking direction determination unit; and
 - a provision unit configured to generate a steering control signal so as to reach an unparking target value of the vehicle in conformity with the initial unparking direction after a gear change is made in response to an output from the gear change notification unit and provide the electronic control steering device with the generated steering control signal.
 6. The unparking control system according to claim 5, wherein the provision unit is configured to generate a steering

control signal for reaching the unparking target value when the unparking direction determination unit has determined that the initial unparking direction is forward or generate a steering control signal of "0" for straight movement when the unparking direction determination unit has determined that the initial unparking direction is backward.

7. The unparking control system according to claim 6, wherein the ECU comprises a redetermination unit configured to decide whether unparking assist has been completed after backward unparking or forward unparking is performed according to the steering control signal provided by the provision unit and, when unparking assist has not been completed, redetermine an unparking direction and a steering control signal for reaching an unparking target value based on distances between the vehicle in a position after movement and front and rear objects.

8. An unparking control system comprising:

a reception unit configured to receive distances from front and rear objects measured by a distance measurement unit configured to measure distances from front and rear objects with reference to a vehicle;

a decision unit configured to decide whether the distance from the front object received from the reception unit exceeds the preset reference distance;

an unparking direction determination unit configured to determine that the initial unparking direction is forward, when the decision unit decides that the received distance from the front object exceeds the preset reference distance, and set an SPAS mode value for operation of forward unparking; or determine that the initial unparking direction is backward, when the decision unit decides that the received distance from the front object is below the preset reference distance, and set an SPAS mode value for operation of backward unparking;

a gear change notification unit configured to output notification information requesting a gear change so that the movement direction of the vehicle is changed to the initial unparking direction determined by the unparking direction determination unit; and

a provision unit configured to generate a steering control signal so as to reach an unparking target value of the vehicle in conformity with the initial unparking direction after a gear change is made in response to an output from the gear change notification unit and provide the electronic control steering device with the generated steering control signal.

9. An unparking control method using an unparking control system, the method comprising:

measuring distances from front and rear objects positioned around a vehicle;

determining an initial unparking direction and whether to perform steering control according to whether the dis-

tance from the front object, among the measured distances, exceeds a preset reference distance; and generating a steering control signal according to the determined initial unparking direction and whether to perform steering control and providing an electronic control steering device with the generated steering control signal.

10. The unparking control method according to claim 9, wherein the determining comprises:

receiving the distances from front and rear objects measured during the measuring;

deciding whether the received distance from the front object exceeds the preset reference distance;

determining that the initial unparking direction is forward, when it is decided during the deciding that the received distance from the front object exceeds the preset reference distance, and setting an SPAS mode value for operation of forward unparking, or determining that the initial unparking direction is backward, when the received distance from the front object is below the preset reference distance, and setting an SPAS value for operation of backward unparking; and

outputting notification information requesting a gear change so that the movement direction of the vehicle is changed to the determined initial unparking direction.

11. The unparking control method according to claim 10, wherein, during the generating,

a steering control signal is generated so as to reach an unparking target value of the vehicle in conformity with the initial unparking direction after a gear change is made according to the notification information, and the electronic control steering device is provided with the generated steering control signal.

12. The unparking control method according to claim 11, wherein, during the generating,

a steering control signal is generated for reaching the unparking target value, when it is determined during the determining that the initial unparking direction is forward, or a steering control signal of "0" is generated for straight movement, when it is determined during the determining that the initial unparking direction is backward.

13. The unparking control method according to claim 12, further comprising, after the generating:

deciding whether unparking assist has been completed after backward unparking or forward unparking is performed according to the steering control signal; and

redetermining an unparking direction and a steering control signal for reaching an unparking target value based on distances between the vehicle in a position after movement and front and rear objects when unparking assist has not been completed.

* * * * *