



(19) **United States**

(12) **Patent Application Publication**

Abu El Ata et al.

(10) **Pub. No.: US 2007/0203740 A1**

(43) **Pub. Date: Aug. 30, 2007**

(54) **SYSTEMIC ENTERPRISE MANAGEMENT METHOD AND APPARATUS**

Publication Classification

(76) Inventors: **Nabil A. Abu El Ata**, New York, NY (US); **Annie Druchert**, New York, NY (US)

(51) **Int. Cl.**
G06Q 99/00 (2006.01)
(52) **U.S. Cl.** **705/1**

Correspondence Address:
HAMILTON, BROOK, SMITH & REYNOLDS, P.C.
530 VIRGINIA ROAD
P.O. BOX 9133
CONCORD, MA 01742-9133 (US)

(57) **ABSTRACT**

An automated system and method provides a diagnosis and remedy to a business information system through a case matching process. From an initial model of a proposed system architecture, performance metrics are modeled and compared against a set of user-defined corporate and business requirements. The performance metrics include cost, quality of service and throughput. From these metrics and requirements, a business ephemeris or precalculated table can be produced, the business ephemeris cross referencing enterprise situation and remedy. From the ephemeris, cases can be generated to comprise characteristics, diagnosis and proposed solutions relating to states of the model or business information system. A matching engine matches a case to a state of the model or information system. The matching case can be employed to report a diagnosis and proposed remedial actions, as well as to implement remedial actions automatically. Off line a mathematical modeling member provides feedback to further update the business ephemeris and case base.

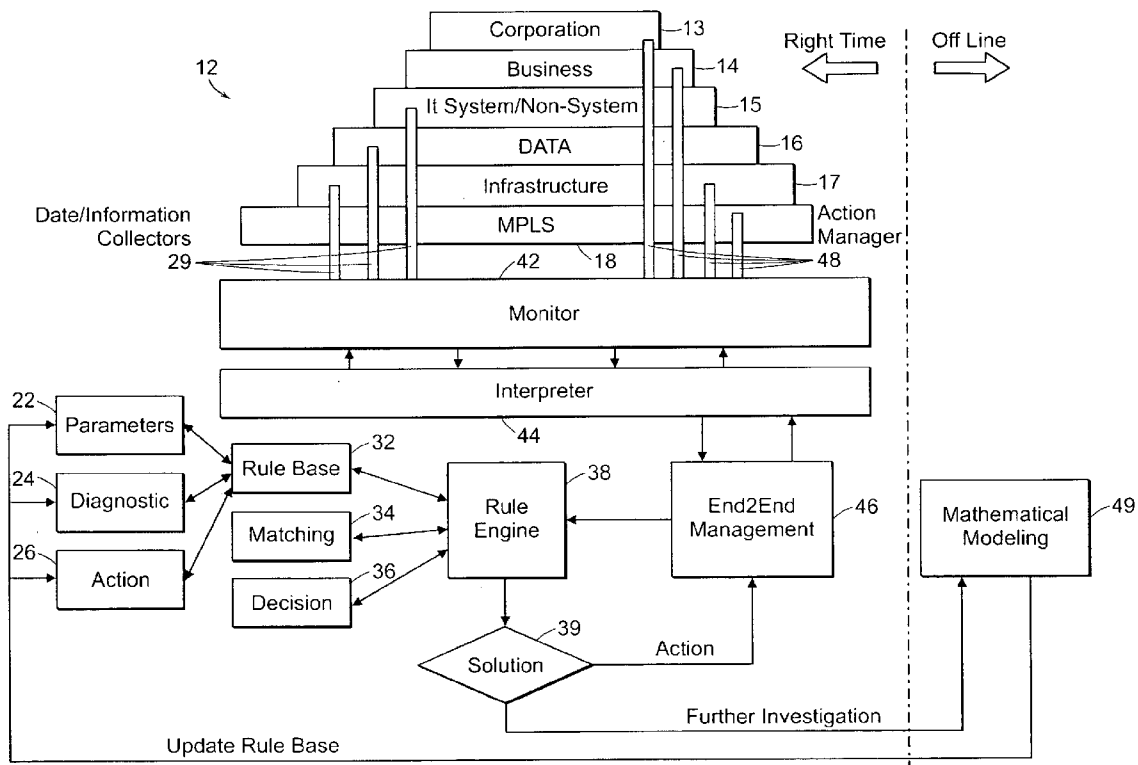
(21) Appl. No.: **11/707,742**

(22) Filed: **Feb. 16, 2007**

Related U.S. Application Data

(63) Continuation-in-part of application No. 11/397,915, filed on Apr. 3, 2006, which is a continuation-in-part of application No. 11/302,988, filed on Dec. 13, 2005, which is a continuation-in-part of application No. 09/942,096, filed on Aug. 28, 2001.

(60) Provisional application No. 60/228,702, filed on Aug. 29, 2000.



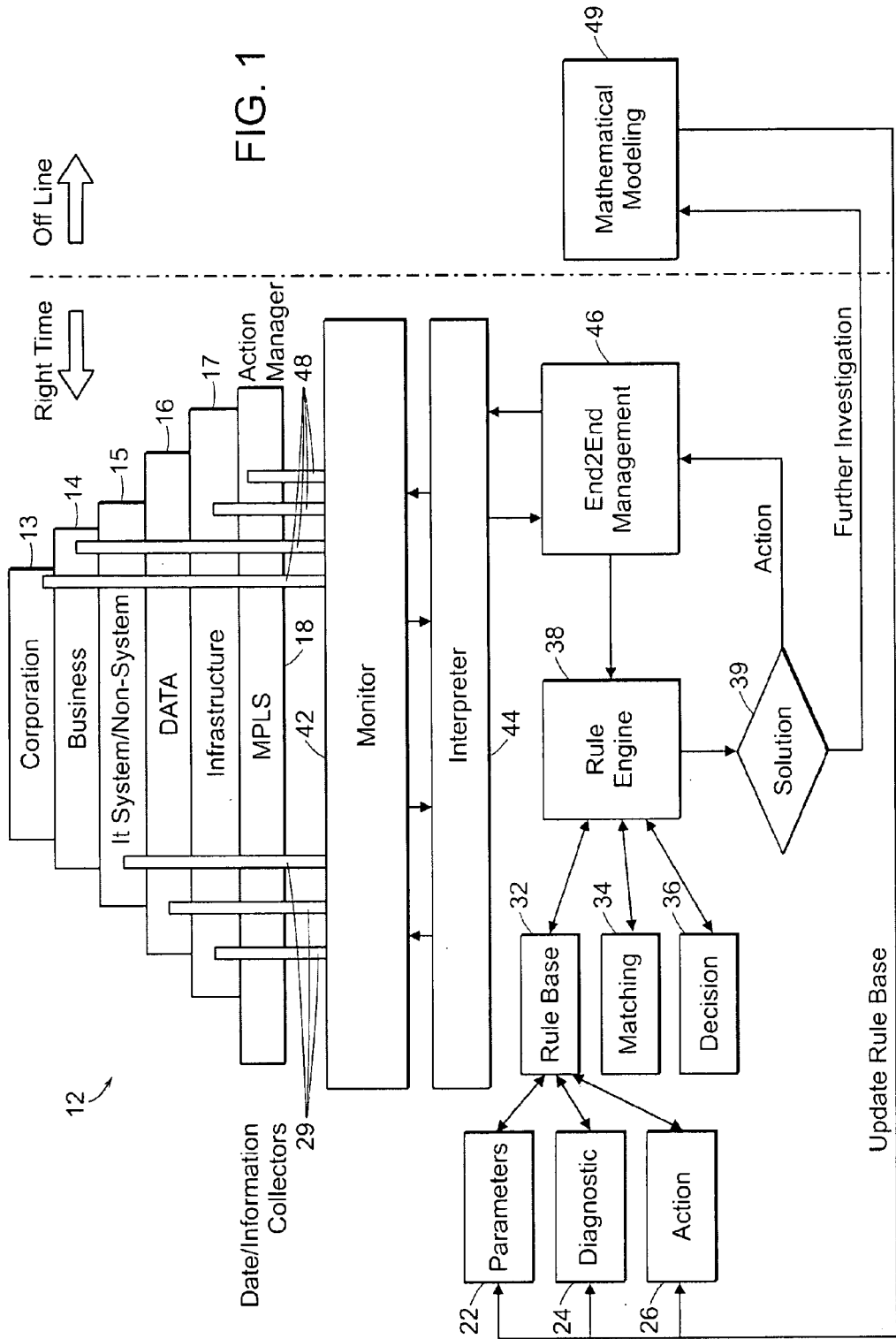


FIG. 1

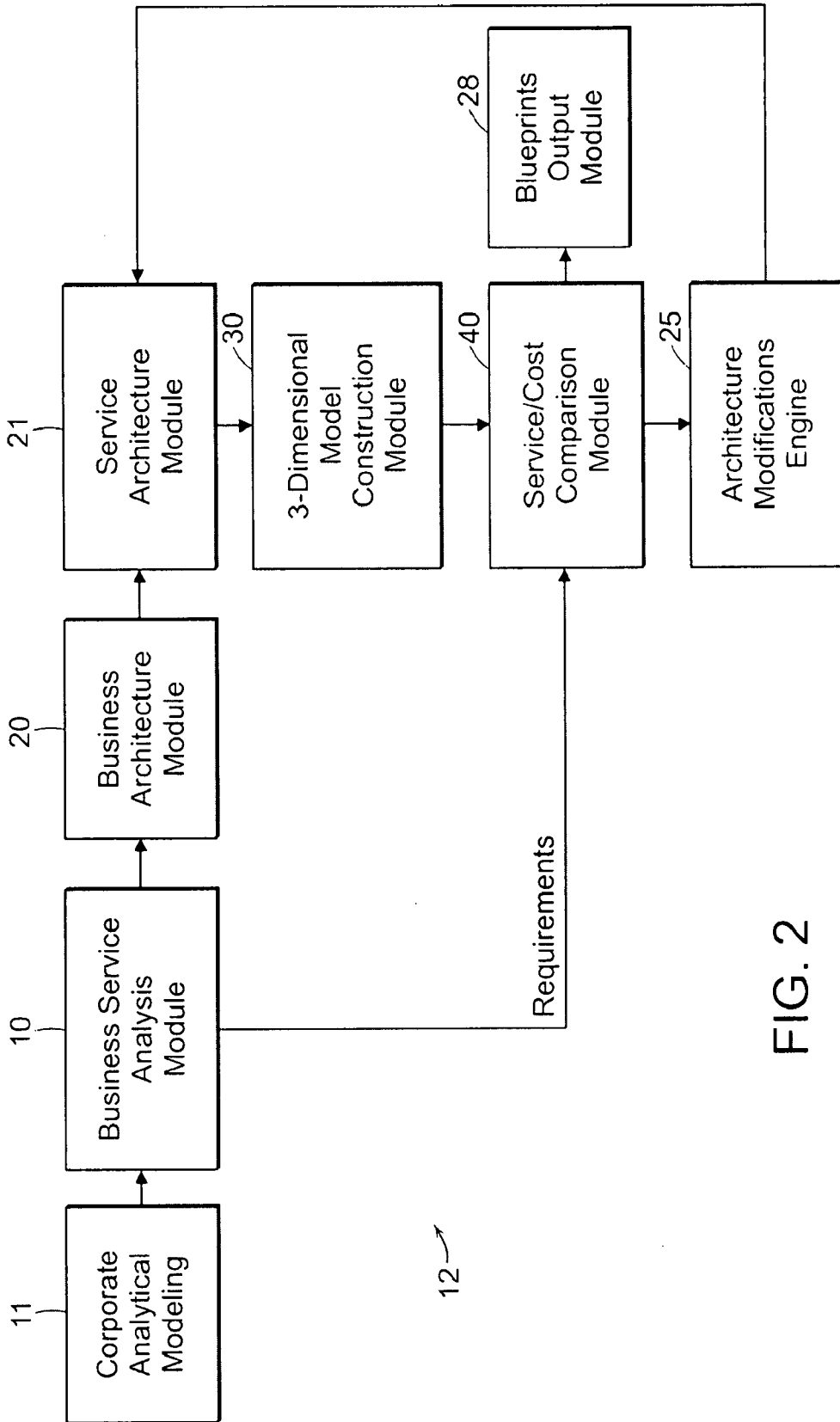


FIG. 2

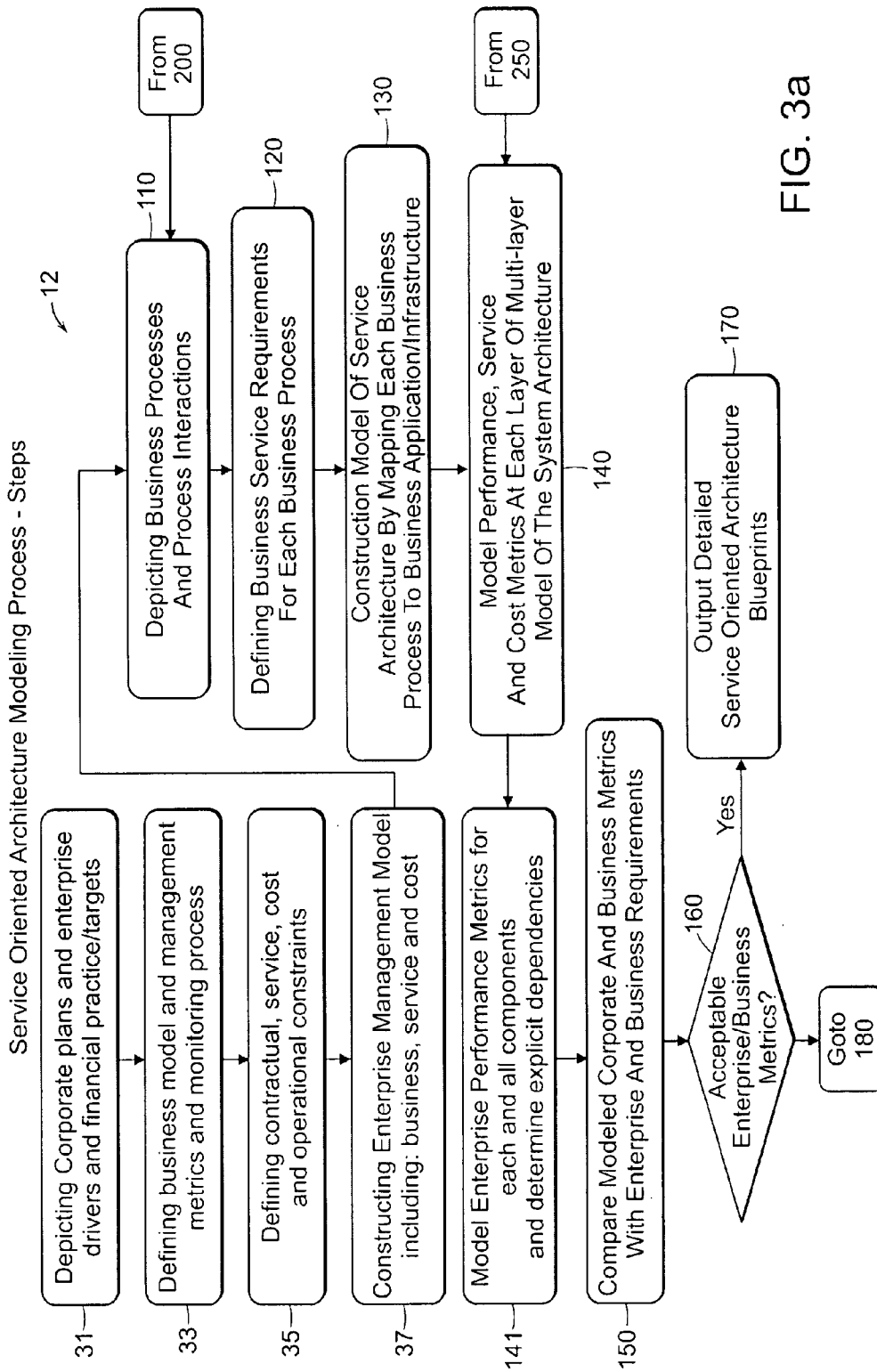


FIG. 3a

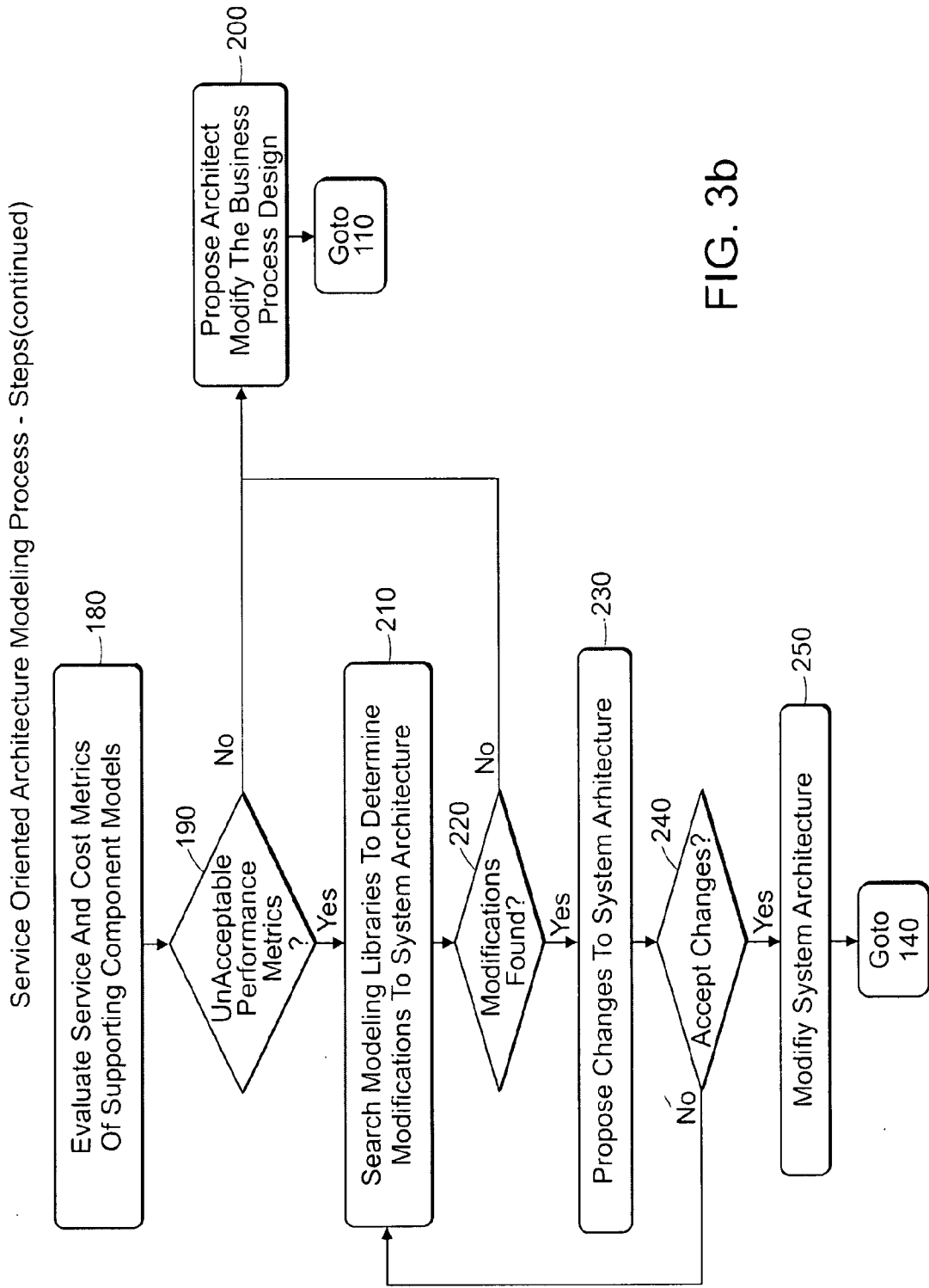


FIG. 3b

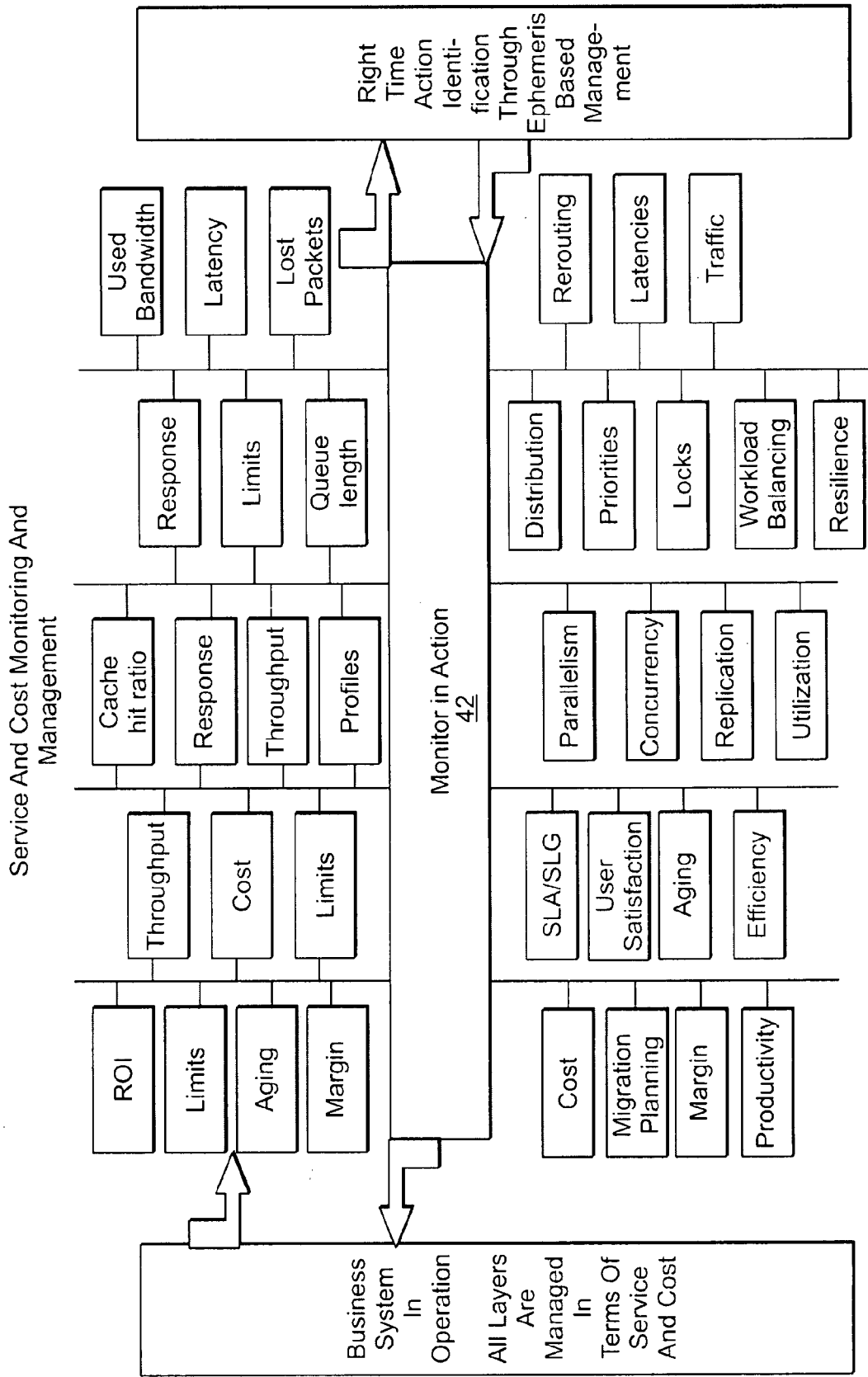
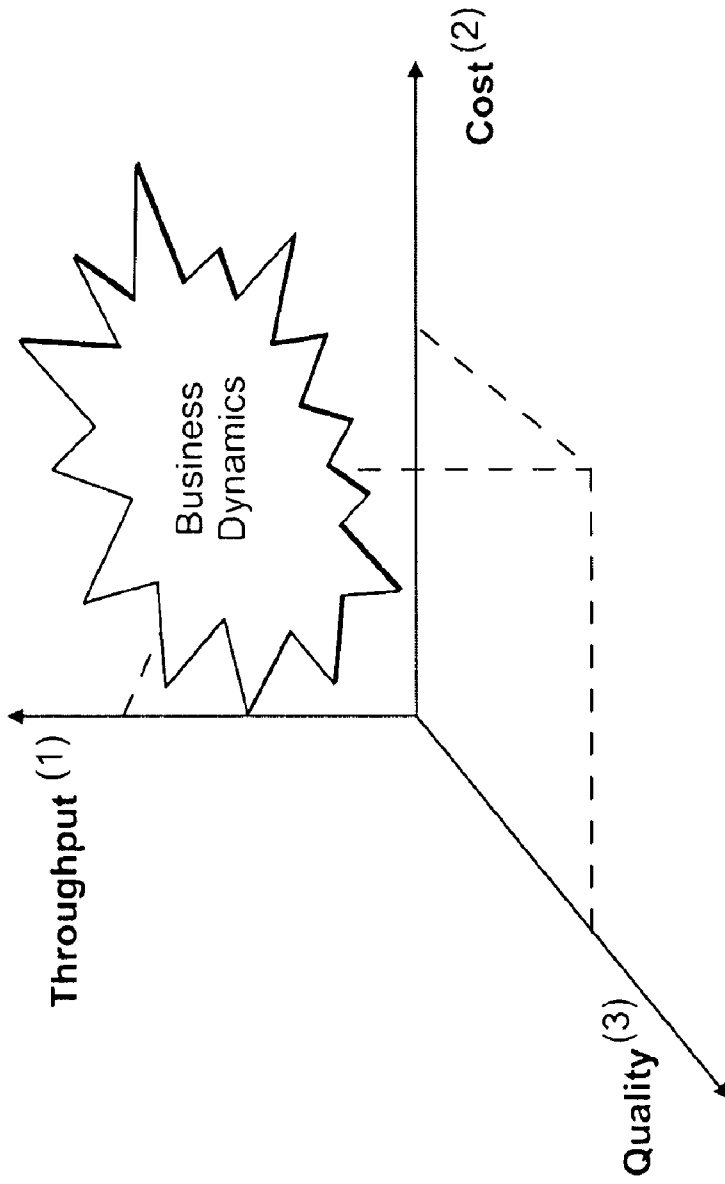


FIG. 4



- (1) Number of delivered Business Events (Particular and Global) Per Second
- (2) Vector of Resource and Support consumption for a Business Event (Particular and Global)
- (3) Required Response (or time window) to deliver a Business Event (Particular and Global)

FIG. 5

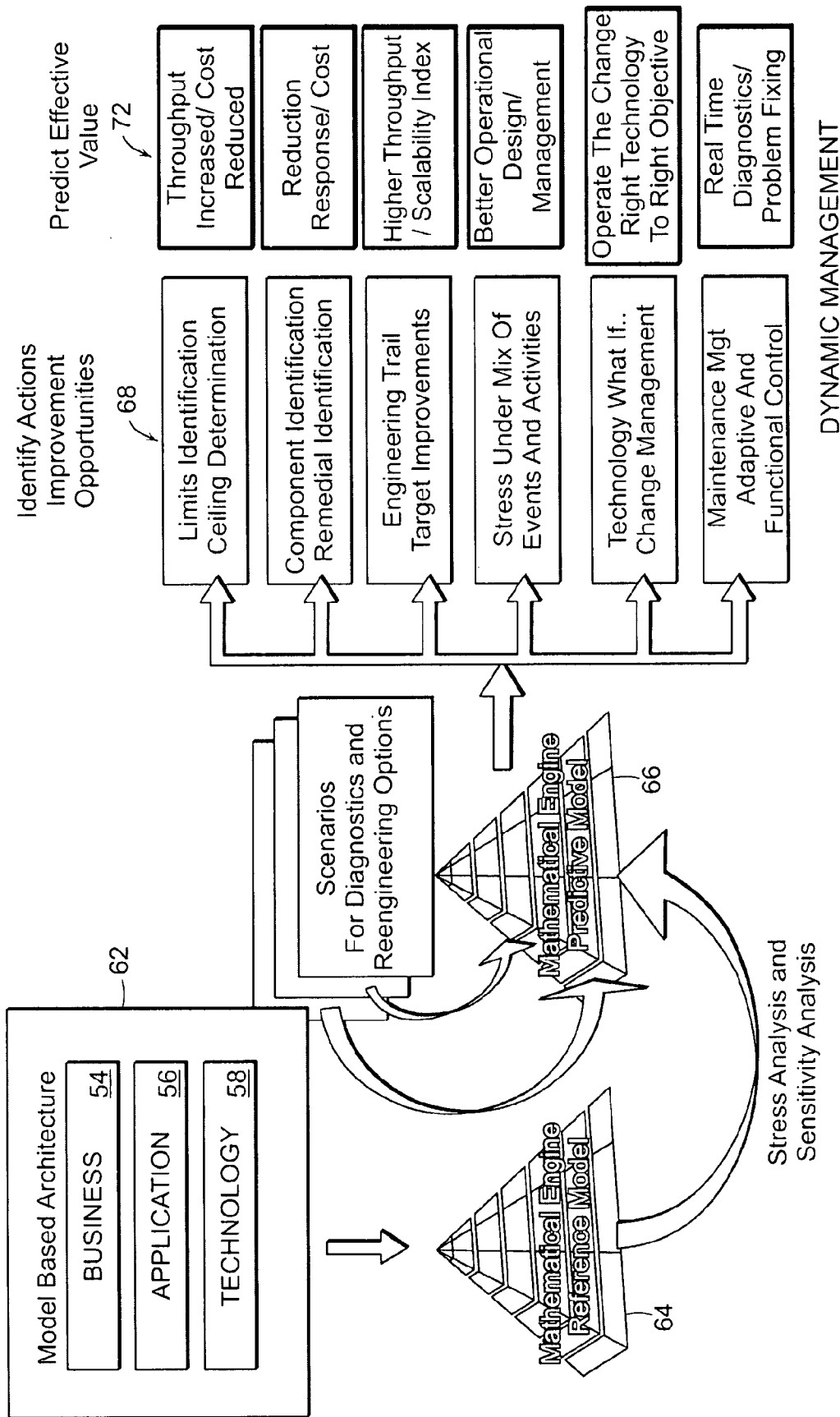


FIG. 6

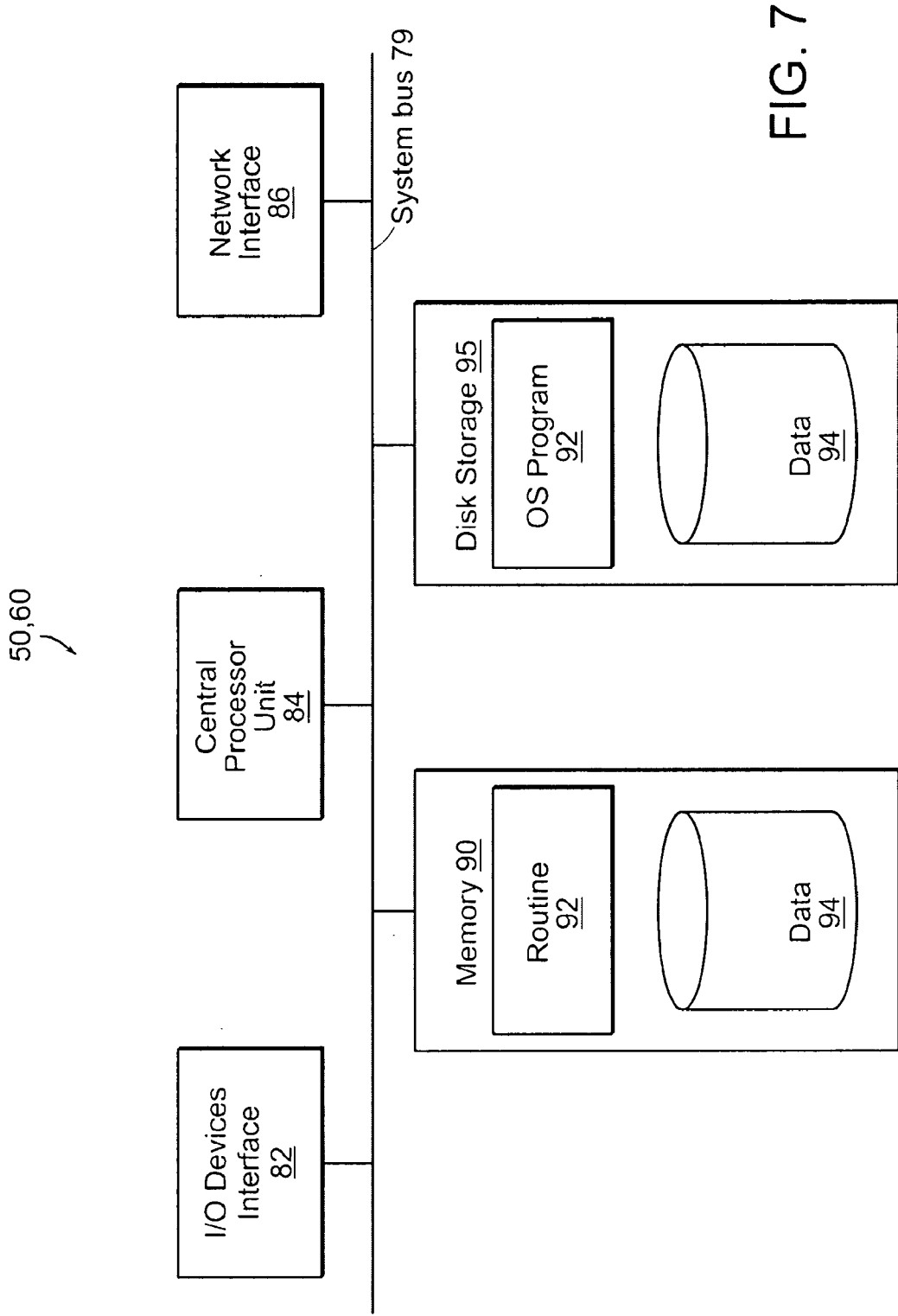


FIG. 7

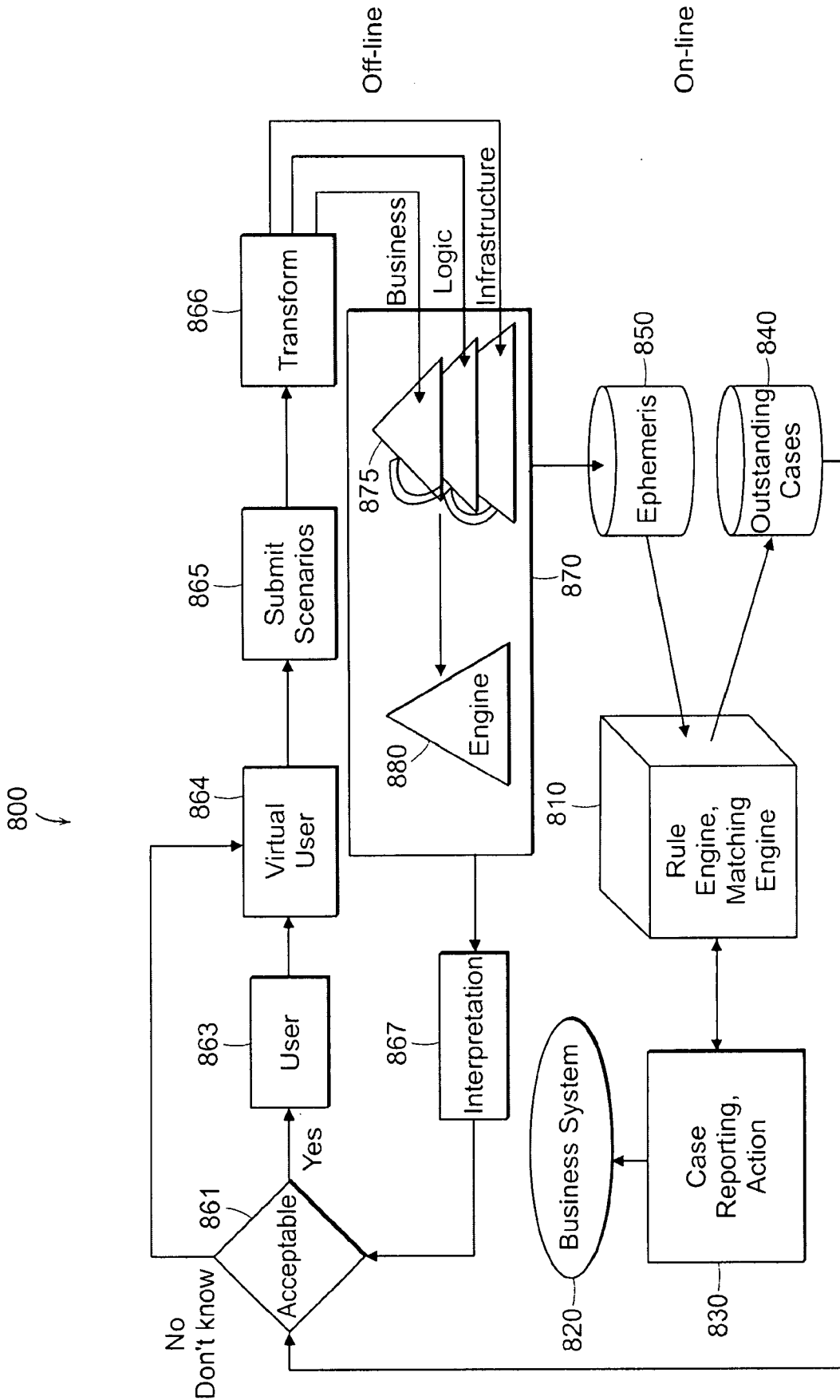


FIG. 8

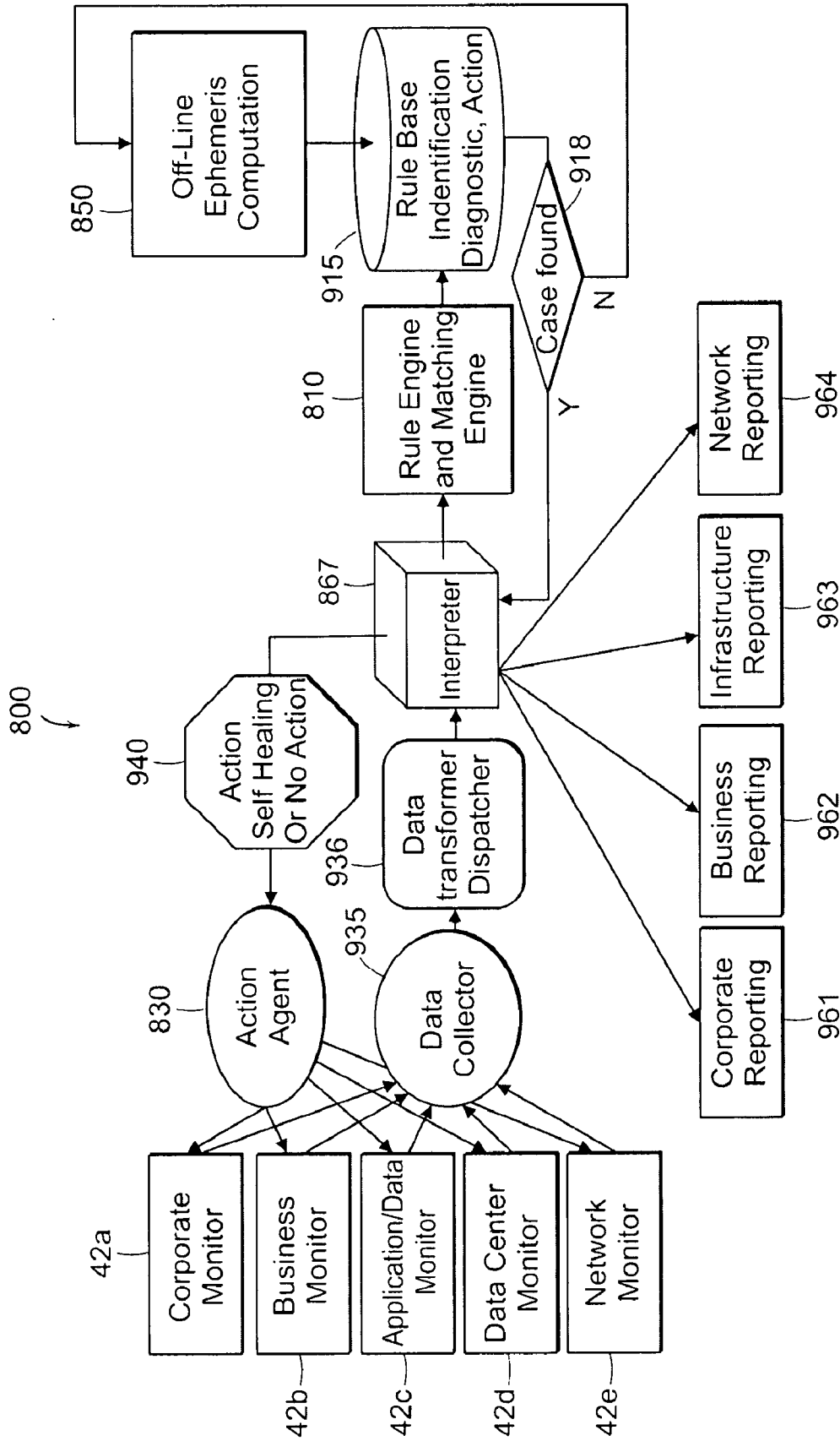


FIG. 9

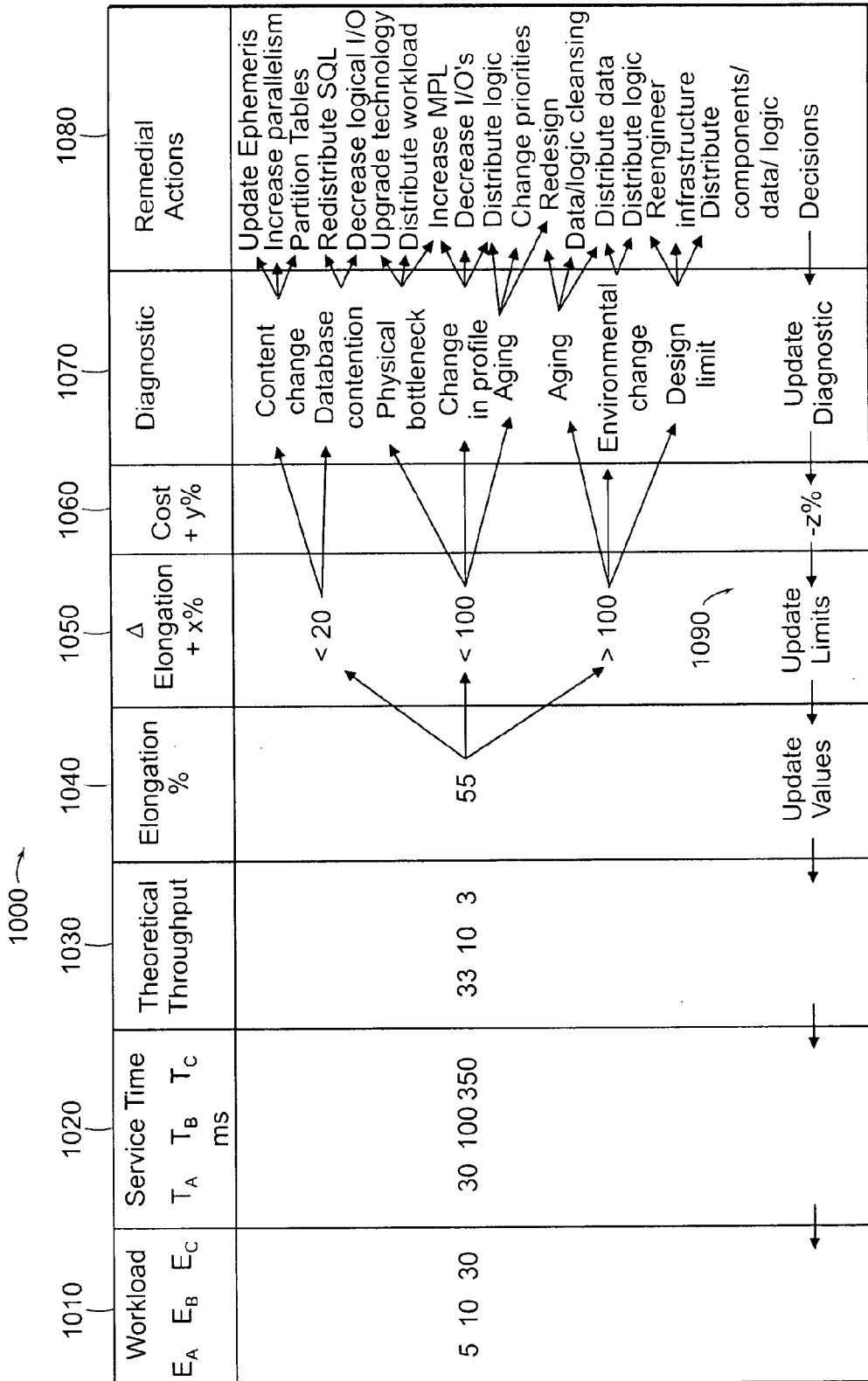


FIG. 10

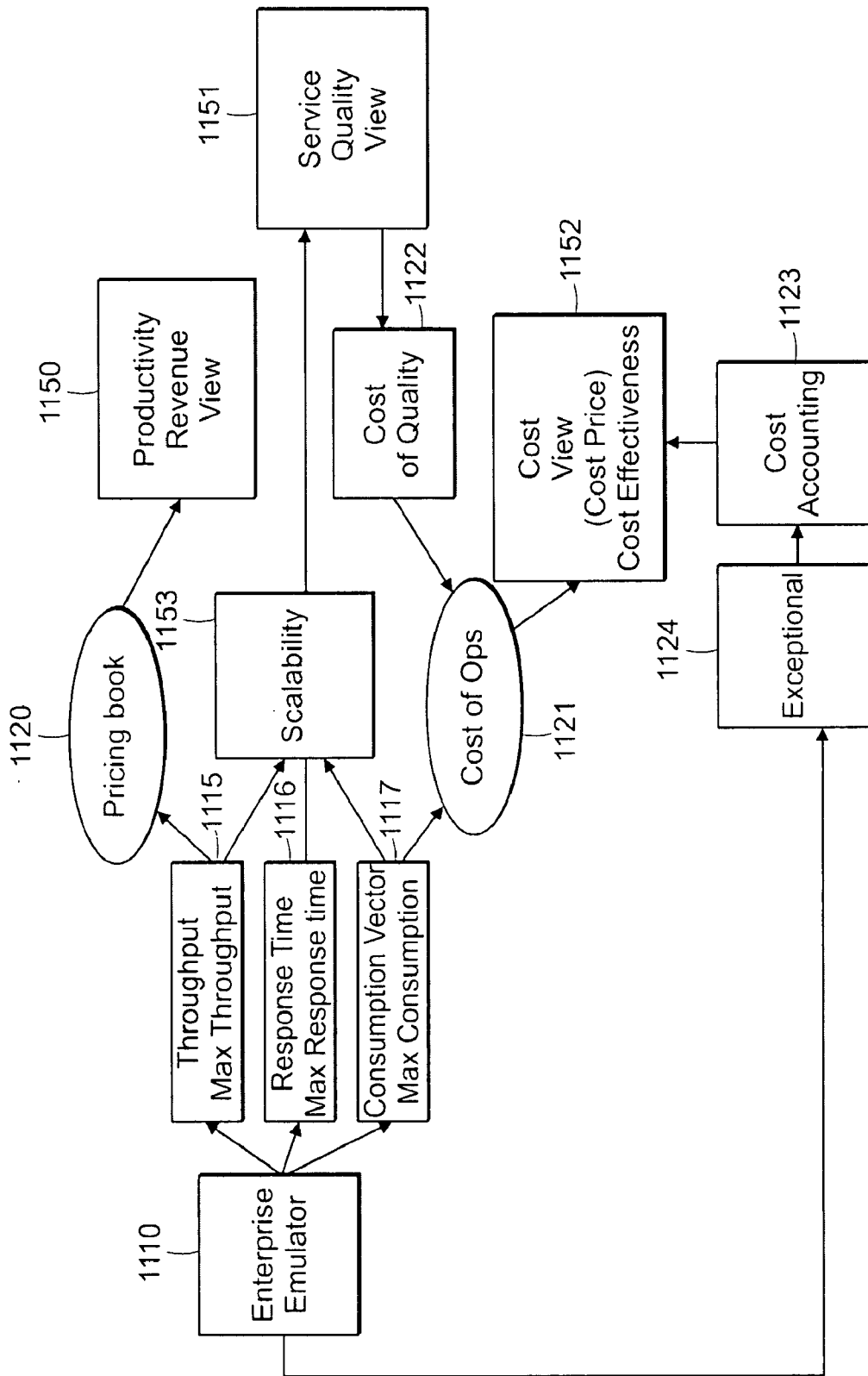


FIG. 11

SYSTEMIC ENTERPRISE MANAGEMENT METHOD AND APPARATUS

[0001] This application is a Continuation-in-part of U.S. application Ser. No. 11/397,915 filed Apr. 3, 2006 which is a Continuation-in-part of U.S. application Ser. No. 11/302,988, filed Dec. 13, 2005 which is a Continuation-in-Part of U.S. application Ser. No. 09/942,096, filed on Aug. 28, 2001 which claims the benefit of U.S. Provisional Application No. 60/228,702, filed on Aug. 29, 2000 and which claims priority to (i) application Ser. No. 09/606,869, filed Jun. 29, 2000 (now U.S. Pat. No. 6,990,437), which claims the benefit of U.S. Provisional Application No. 60/142,313, filed on Jul. 2, 1999, and further claims priority to (ii) application Ser. No. 09/127,191, filed Jul. 31, 1998 (now U.S. Pat. No. 6,311,144) which claims the benefit of U.S. Provisional Application No. 60/085,350, filed on May 13, 1998. U.S. application Ser. No. 11/302,988 also claims priority to U.S. application Ser. No. 10/005,481, filed on Oct. 26, 2001 (now U.S. Pat. No. 7,035,786) and U.S. application Ser. No. 10/014,317 filed on Oct. 26, 2001 (now U.S. Pat. No. 7,031,901).

[0002] The entire teachings of the above applications are incorporated herein by reference.

BACKGROUND OF THE INVENTION

[0003] In a business entity or organization, information is communicated, stored and shared across various channels and means. Generally, the hardware and software components involved in the tracking, processing and recording of such business information is referred to as the information system. The structure and interdependence/interaction of supporting equipment and applications components (hardware and/or software), policies and protocol forming the information system is referred to as "the information system (IS) architecture".

[0004] With the advent of electronic computing, business organizations, such as financial institutions, have utilized information systems to provide a computerized infrastructure for supporting business processes. Here the information system includes a number of interconnected hardware and software components, implementing one or more business solutions. The architectures of such systems are typically required to handle varying degrees of workload and priorities under imposed business constraints.

[0005] The design of information system architectures having such requirements and constraints represents a real challenge. Most existing methodologies, tools and techniques concentrate on static, partial descriptions of computerized business infrastructures. Dynamic system behavior is generally unknown until the information system is in construction or in operation, thus, limiting the possibilities for improvement. Unacceptable performance issues may become exacerbated as a system evolves with the addition of new business applications that must be supported by the architecture.

[0006] Furthermore, when the origin of a problem resides in questionable decisions made early in the development process, the cost of improvement could become prohibitive when a redesign of the system architecture is required at some level. Thus, a tremendous amount of investment may be lost due to the design of unacceptable system architectures.

[0007] Design and maintenance of information system architecture becomes more complex with the incorporation of enterprise management. Enterprise management includes end to end control across a corporation or other business entity, with plural business units, and monitoring performance in terms of enterprise (corporation wide) response or throughput, costs and quality of service.

SUMMARY OF THE INVENTION

[0008] Embodiments of the invention provide an automated system and method for defining and analyzing enterprise architectures. In particular, the present invention employs modeled service architectures and cost architectures of enterprise information systems. Embodiments employ a business function and business process design, which describes a number of business functions and business processes and defines a set of corporate (enterprise) requirements and business service requirements for each business function and business process. A multi-layer mathematical model of an IS architecture is constructed from the business process design and has a business layer, an application/data layer, and a technology layer. Once the initial model is constructed, performance metrics (especially cost, quality of service or class of service and throughput) are modeled at each layer and incorporated into the whole with subsequent perturbation factors.

[0009] From the modeled performance metrics, a business ephemeris (a precalculated table with specific data structure and content cross referencing situation and remedy) is provided for on line (real time) and off line analysis of the subject enterprise. Preferably the business ephemeris/pre-determined table is in terms of cost versus (with respect to) quality of service versus throughput. Given a current state ("situation") of the enterprise information system architecture, the table provides an indication of remedies predefined by the mathematical model, that is modifications, corrections and/or optimizations to the IS architecture to achieve target performance and meet enterprise requirements.

[0010] For each business process, the modeled performance metrics are compared with a set of corporate and business service requirements, producing respective indications of unacceptable performance metrics of one or more business processes. For business processes having unacceptable performance metrics, modifications to the enterprise IS architecture are determined and proposed to the system architect for acceptance. If accepted, the model of the IS architecture is modified with the accepted modifications and the performance metrics are updated at each layer. If the updated performance metrics satisfy the corporate and business service requirements, an output of a description of the resulting IS architecture is available.

[0011] In embodiments of the present invention, the business ephemeris may be employed to create cases that are specific to a subset of the enterprise or business information system, where the cases provide characteristics, diagnosis and fixing action specific to that subset. The cases may also be specific to metrics of the information system. To generate such cases, a model of the information system is used to generate several possible states of the model (e.g., normal operation, extreme operation, etc.). From these states the corresponding diagnosis and fixing options are determined for each state, thereby building a case base of cases comprising system characteristics, diagnosis and proposed solutions.

[0012] Through a matching process, parameters required to identify a case are extracted at a desired frequency, and the parameters are matched to a case from the case base. Once a matching case is identified, a corresponding diagnosis and proposed fixing action are reported; a fixing action may also be applied through a self-healing process. If a matching case cannot be identified, then the extracted parameters are applied to the model to generate a matching case, thereby updating the case base.

BRIEF DESCRIPTION OF THE DRAWINGS

[0013] The foregoing and other objects, features and advantages of the invention will be apparent from the following more particular description of preferred embodiments of the invention, as illustrated in the accompanying drawings in which like reference characters refer to the same parts throughout the different views. The drawings are not necessarily to scale, emphasis instead being placed upon illustrating the principles of the invention.

[0014] FIG. 1 is a schematic view of an automated management system including a model based architecture assembly.

[0015] FIG. 2 illustrates the functional stages and modules of the model based architecture assembly of FIG. 1.

[0016] FIGS. 3A and 3B are flow diagrams of the model based architecture assembly of FIG. 1 generating a service architecture model of a subject enterprise.

[0017] FIG. 4 is a block diagram of a monitor feature in the embodiment of FIG. 1.

[0018] FIG. 5 is a graph illustrating dimensions of quality of service, cost and throughput employed in an automated management system.

[0019] FIG. 6 is a schematic illustration of an automated management system including a predictive model.

[0020] FIG. 7 is a block diagram of a computer system (digital processing system) in which embodiments of the present invention are implemented in hardware, software and/or a combination thereof.

[0021] FIG. 8 is a high-level flow diagram of a system embodiment of the present invention for implementing a set of cases in an enterprise information system.

[0022] FIG. 9 is a flow diagram of the system of FIG. 8, further illustrating matching and reporting cases.

[0023] FIG. 10 is a chart illustrating content of a case in an embodiment of the present invention.

[0024] FIG. 11 is a block diagram illustrating system parameters produced by an enterprise emulator of the present invention.

DETAILED DESCRIPTION OF THE INVENTION

[0025] A description of example embodiments of the invention follows.

[0026] Embodiments of the invention provide an automated system and method for enterprise management to define and analyze IS architectures of the enterprise. In particular, the present invention provides for enterprise

managers a tool for analyzing cost, quality of service and throughput of information system architecture in existence or in construction (being designed).

[0027] Illustrated in FIG. 1 is automated management system including a model based architecture assembly. An assembly 12 models the information system (IS) and IS architecture of a subject enterprise. Preferably assembly 12 is generated by a model-based architecture system of U.S. Pat. No. 6,311,144 (herein incorporated by reference) which has been extended from a single business unit to apply to an enterprise with multiple business units. This extension is accomplished by a corporate layer 13.

[0028] In particular, the assembly 12 models the IS architecture of a subject enterprise at different levels of abstraction beginning with a corporate layer (e.g., enterprise level) 13. The corporate layer 13 defines enterprise practices (e.g., financial practices/targets), constraints (limits on operations cost) and parameters. The corporate layer 13 also describes the strategic objectives of the enterprise including service and quality requirements. The corporate layer 13 feeds these definitions and requirements to a business layer 14.

[0029] In response, the business layer 14 defines the different business processes of the organization, the content of each process (e.g., subprocesses and functions), the intercommunication among processes (and subprocesses and functions) and their interdependencies. Performance criteria and service and cost criteria as dictated or otherwise influenced by corporate layer 13 are also defined. The business layer 14 definitions and criteria are technology independent and are passed to an application architecture layer (or IT and non-IT system layer) 15.

[0030] The IT/non-IT system layer 15 translates the corporate and business functions and practices (of corporate layer 13 and business layer 14) into computer application software solutions and other components (including non-IT system ones). Layer 15 also translates the corporate and business layers 13, 14 quality and performance criteria into quantitative requirements and quantitative indicators. There is a many-to-many correspondence between business processes of layer 14 and application or other components (IT and non-IT systems) of layer 15. Application (IT and non-IT) architecture layer 15 effectively outputs to the next layer 16 a blueprint on how the computer application architecture is distributed vertically (application layers such as presentation layer, management, logic, data and associated communication) as well as horizontally (cycles corresponding to back office activity, mid and front office, client access, etc.)

[0031] Data and technical architecture layer 16 translates the high level definitions (logical structures and performance criteria) produced by corporate layer 13, business layer 14 and application architecture layer 15 into physical definitions and implementation constraints. That is, layer 16 identifies the physical requirements (processing speed, memory, storage, infrastructure services, etc.) to achieve and support the business processes and corresponding application/software components. Layer 16 describes in detail data and information structures including metadata, storage, retrieval and security. Layer 16 also defines transaction rate, memory capacity and speed, processing speed and similar physical requirements. Interfaces, monitoring and data management alternatives are also determined, modeled and prototyped here. Although this layer 16 is technology depen-

dent, the considerations involved in layer 16 are not platform dependent, i.e., determinations at this layer are made without regard to or independent of platform.

[0032] The infrastructure architecture layer 17 is the technology or platform specific layer. The definitions and requirements produced in the preceding layers 13, 14, 15, 16 are implemented by layer 17. In particular, layer 17 determines platform specific hardware and network components, implementation language(s), program applications and techniques and standards (e.g., for communication, signal transmission, circuits, routing mechanisms, etc.) to carry out the architecture direction. In one embodiment, this may be an IP network or MPLS (multi-protocol label switching) network.

[0033] Mathematical models are defined and utilized at each layer 13, 14, 15, 16, 17, and performance metrics are determined for constructing the IS architecture. The construction of mathematical models and determination of performance metrics preferably follows the techniques described in U.S. Pat. No. 6,990,437 (herein incorporated by reference). The multilayer mathematical modeling and IS architecture optimization is represented at (includes), for example, the MPLS layer 18 in FIG. 1, which represents the network layer. In some embodiments, the multilayer mathematical model of the enterprise IS architecture has a business layer, an application/data layer and a technology layer.

[0034] In practice, assembly 12 models the IS architecture of the subject enterprise and in particular for each layer of the multilayer mathematical model, provides cost modeling (a cost architecture model) and quality of service modeling (a service architecture model). This is preferably accomplished as illustrated in FIGS. 2 and 3.

[0035] With reference to FIG. 2, a corporate analytical modeling stage 11 provides a graphical layout interface through which a system architect inputs or otherwise provides details and parameters of corporate plans, financial practices and targets, and service and quality requirements.

[0036] The business service analysis module 10 provides a graphical layout interface, through which the system architect inputs a business process design. A business process design identifies business processes within a business organization and the flow of communication and workload among them. Furthermore, the business process design defines a set of business requirements (including business service requirements) for each individual business process.

[0037] A business architecture stage or module 20 provides a graphical user interface through which the system architect constructs a multi-layer mathematical model of an enterprise IS architecture. The IS architecture has a business architecture which supports the business process design that was input at business service analysis module 10. Likewise at a service architecture module 21, the system architect constructs a respective multi-layer mathematical model that supports the enterprise description (plans and practices) input at the corporate modeling stage 11. In particular, service architecture module 21 defines contractual, operational, service and cost constraints (i.e., service and cost architectures) of the respective multi-layer mathematical model and applicants refer to this as the enterprise dynamic model.

[0038] Preferably, the structure of the above multi-layer mathematical models are as described in U.S. patent appli-

cation Ser. No. 09/127,191 (now U.S. Pat. No. 6,311,144) entitled "Method and Apparatus for Designing and Analyzing Information Systems Using Multi-Layer Mathematical Models," filed Jul. 31, 1998, the entire contents of which are incorporated herein by reference.

[0039] The model construction module 30 combines the business architecture of business architecture stage 20, the service architecture of module 21 and the cost architecture of module 21 to form a three dimensional enterprise management model. Construction module 30 also calculates performance metrics for each component and determines interdependencies. The results of construction module 30 is a three dimensional (e.g., business, cost and service) model of the IS architecture of the subject enterprise. Thus each of the multi-layers of the mathematical model of the IS architecture has these three dimensions.

[0040] The comparison module 40 compares the modeled performance metrics output by construction module 30 with the defined set of enterprise requirements and business requirements provided at corporate analytical modeling stage 11 and business design module 10. In particular, comparison module 40 compares the calculated performance metrics for the service architecture and cost architecture to the enterprise requirements and the business service requirements. The comparison module 40 produces indications of whether one or more enterprise practices or business processes exhibit unacceptable performance metrics that do not satisfy the respective input enterprise requirements or business service requirements.

[0041] If unacceptable modeled enterprise and/or business performance metrics are identified, a rule-based modification engine 25 determines appropriate improvement inducing modifications to the three dimensional (e.g., throughput, service, cost), multi-layer model of the enterprise IS architecture. The modification engine 25 displays and proposes the modifications to the system architect for acceptance.

[0042] If accepted, the service architecture module 21 automatically incorporates the proposed modifications into the three dimensional multi-layer model of the enterprise IS architecture without further assistance from the system architect. The performance metrics for the modified IS architecture are updated by the construction module 30 and compared again by the comparison module 40. If the modeled performance metrics of the cost architecture and that of the service architecture do satisfy the enterprise requirements and the business service requirements, an output module 28 provides a detailed description of the enterprise IS architecture to the system architect for use in subsequent implementation stages. Otherwise, assembly 12 continues to iterate through the modification, modeling, and comparison stages of modules 25, 21, 30, and 40. This process continues until either (i) the modeled performance metrics of the cost architecture and the service architecture of each business process satisfy the enterprise and business service requirements or (ii) the performance metrics of the supporting hardware and software component models cannot be improved further without a change to the enterprise practices/plans and/or the business process design.

[0043] FIGS. 3A and 3B provide a flow diagram illustrating the operations of FIG. 2 in more particular detail.

[0044] At step 31, assembly 12 obtains from the system architect (user) details and parameters of corporate plans and

targets as described above at corporate analytical modeling stage 11. In response, step 31 generates a depiction of corporate plans and enterprise financial practices and targets.

[0045] At step 33, assembly 12 defines the business model, management metrics and monitoring process. This is accomplished based on user input at the business service analysis module 10 and business architecture module 20.

[0046] Step 35 of FIG. 3A defines contractual service, cost and operational constraints based on user input at the service architecture module 21.

[0047] Step 37 constructs the three dimensional (business, service and cost) enterprise model of model construction module 30. In one embodiment, step 37 combines the business architecture, service architecture and cost architecture parameters and definitions from steps 31, 33 and 35 into a full enterprise dynamic model. Further data toward defining the enterprise IS architecture (three dimensional multi-layer model) is obtained through an interactive interface.

[0048] For example, at step 110, the business service analysis module 10 provides a graphical layout interface through which a system architect provides various information regarding business processes and the flow of process interactions of the subject enterprise. According to one embodiment, the graphical layout interface is implemented with a graphical scripting language, such as Universal Modeling Language (UML) or a hierarchy of graphical representations.

[0049] At step 120, the business service analysis module 10 provides a graphical layout interface through which the system architect defines the business service requirements for each business process. According to one embodiment, the business service requirements define business constraints and business drivers. Business drivers, in general, represent the workload that a business process is expected to receive. Typical business drivers include the expected number and kind of business events and the rate at which the events are received.

[0050] Business constraints refer to time and volume constraints imposed by the business needs. Typical time constraints include business response time, while typical volume constraints include events processed per day or events processed per second or events to be processed by a certain date or events that impose a certain definiteness on other events, for example. The business constraints provide a standard of comparison for determining whether the proposed system architecture meets the needs of the business unit.

[0051] At step 130, the business architecture module 20 provides a graphical user interface through which a system architect maps each business process to a business application or infrastructure. According to one embodiment, step 130 generates and displays to the system architect a list of premodeled business applications. Each listed business application is coupled to a default set of supporting hardware and software component models. The initial model is constructed by simply mapping the available business applications to corresponding business processes defined in the business process design. Thus, the system architect is relieved from defining all of supporting hardware and software components, further simplifying the automated process.

[0052] After mapping all of the business processes, the business architecture module 20/step 130 generates the multi-layer mathematical model of the subject enterprise IS architecture. In turn, at steps 140 and 141, the construction module 30 models performance metrics for each layer of the multi-layer mathematical model. Such metrics include service and cost (i.e., elongation, response time, volume of processed transactions, transaction processing rates, and cost of resources involved). According to one embodiment, the business drivers defined at step 120 are included in the modeling of the performance metrics. Step 141 calculates enterprise performance metrics for each component and determines explicit dependencies. The modeled performance metrics are then forwarded to the comparison module 40.

[0053] At step 150, the comparison module 40 makes an initial determination as to whether the modeled performance metrics of the enterprise practices and business processes satisfy the enterprise requirements and the business service requirements as defined in stages 10 and 11 of FIG. 2 (steps 110 and 120, FIG. 3A). According to one embodiment, the comparison is performed as the difference between the value of a modeled performance metric and the value of a corresponding business constraint, such as response time. Advance reasoning and fuzzy logic may also be used to ascertain whether a modeled performance metric satisfies a defined business constraint.

[0054] If, at step 160, the modeled performance metrics satisfy the enterprise/business service requirements of each business process, the modeled system architecture (generated at step 37) is forwarded to the output module 28 at step 170 to output a detailed description of the specifications of the model based IS architecture of the enterprise. The output module 28 formats the system architecture model (including service, cost and business dimensions at each layer) into a detailed set of "blueprints" describing the construction and implementation of the service oriented architecture. According to one embodiment, the format of the output is a Universal Modeling Language (UML) document, which can be displayed readily through an Internet browser. The UML-generated display shows the subject IS architecture containing hyperlinks between components within the business, application, and technology layers.

[0055] If, at step 160, at least one of the business processes exhibits unacceptable business performance metrics, the comparison module 40 at step 180 in FIG. 3B attempts to identify the supporting component models in the application and technology layers causing their unacceptable performance metrics. Toward that end, comparison module 40 evaluates the performance metrics of the supporting hardware and software component models linked to the one or more business processes exhibiting unacceptable performance metrics. According to one embodiment, the modeled performance metrics of the supporting component models are compared against vendor-provided or modeled benchmarks in order to determine if there are any inefficiencies associated with their operation.

[0056] If, at step 190, none of the supporting component models exhibits unacceptable modeled performance metrics, then the system architect is notified at step 200, through a graphical user interface, that the unacceptable performance metrics are caused by flaws in the business process design

and/or enterprise plan. These flaws may include inefficient business process interactions or unrealistic business service requirements. The process returns to step 110 providing the system architect with the graphical layout interface of the business service analysis module 10 or service architecture module 21 to modify the business process or the service or cost architectures.

[0057] If, at step 190, one or more of the supporting component models do exhibit unacceptable performance metrics, then step 210 forwards the identity of the supporting components and the unacceptable performance metrics to the rule-based modification engine 25 to determine modifications to the subject IS architecture for improvement.

[0058] At step 210, the modification engine 25 determines modifications to the subject IS architecture to address the unacceptable performance metrics of supporting hardware and software components modeled therein. According to one embodiment, the rule-based modification engine 25 searches libraries (e.g., a logic tree implemented within a data store) using the identity of the supporting component models and their unacceptable metrics. The search results provide recommended modifications according to prior modeled results stored in tables (business ephemeris tables discussed below) 22, 24, 26 of FIG. 1. For example, if an increase in memory size is the recommended modification, the recommended size is a value obtained from previous modeled results. Such modifications may include replacement of the one or more supporting component models with alternate component models.

[0059] If, at step 220, the search is successful in finding recommended modifications to the subject IS architecture, then the modifications are proposed to the system architect through a graphical user interface for acceptance at step 230.

[0060] If, at step 240, the system architect rejects all of the proposed modifications, the logic tree is searched again at step 210 to locate alternative modifications to the subject IS architecture. If, at step 220, the search fails to find additional recommended modifications, then at step 220 the system architect is notified through a graphical user interface that the unacceptable performance metrics are caused by flaws in the enterprise plan or the business process design and the process returns to step 110 providing the system architect with the graphical layout interface of the business service analysis module 10 and/or service architecture module 21 to modify the business process design or enterprise plan components.

[0061] If, at step 240, the architect accepts one or more of the proposed modifications, the model of the IS architecture is automatically modified by the source architecture module 21 with the accepted modifications at step 250.

[0062] After modifying the IS architecture model, the process returns back to step 140 for further modeling, repeating the process until (i) the modeled performance metrics of each business process either satisfy the enterprise and business service requirements or (ii) the performance metrics of the supporting hardware and software component models cannot be improved further without a change to the enterprise practices/plans and/or the business process design.

[0063] Once the modeled performance metrics do satisfy the enterprise and business service requirements, the model

of the enterprise IS architecture (i.e., a service oriented architecture) is formatted into a detailed description, which may be output from the output module 28 at step 170.

[0064] Referring back to FIG. 1, assembly 12 provides the model of an IS architecture, and in particular a model of a service oriented architecture of the subject enterprise according to the multi-layer mathematical modeling techniques of FIGS. 2 and 3A-3B. As such, assembly 12 models the quality of service, cost and throughput at each mathematical model layer (business, application, technology). From an initial model of assembly 12, triplet data points $\{s_i, c_i, T_i\}$ are formed with a respective quality of service value s_i , a cost value c_i and throughput value T_i , each at the same moment in time i in a layer of the mathematical model. Each triplet data point represents a state of the enterprise or more generally a "situation" of the enterprise. For each such state or situation, the model of assembly 12 can optimize or otherwise suggest modification to the IS architecture toward goal or target service, cost and/or throughput levels. Such optimization/modification poses or otherwise defines a remedy for the given state/situation.

[0065] The situation-remedy pairs are stored in a lookup table. The table then serves as a business ephemeris or a precalculated table indexed and searchable by situation (e.g., quality of service value, cost value and throughput value). Thus given a situation $\{s, c, T\}$, the table provides the corresponding remedy as results of the table lookup. FIG. 1 illustrates this business ephemeris (the predefined or pre-modeled table) feature implemented as Parameters 22 (time i and layer, e.g., business, application or technology), Diagnostic (state or situation) 24 and Action (remedy) 26. Each of these members 22, 24, 26 support the rules 32 of rule engine 38. Rules 32 cover each layer of the assembly 12 model and each dimension (service, cost, throughput) of each layer.

[0066] In practice, assembly 12 models the IS architecture of the subject enterprise in real time. This is accomplished by the multi-layer mathematical modeling with cost, service and throughput dimensions at each layer described above. For each layer (business, application, technology) of the mathematical model, a monitor 42 calculates and manages service and cost levels. For example, as shown in FIG. 4, monitor member 42 detects on the business layer ROI (return on investments), limits, aging, margins, throughput, cost, cache hit ratio, response time, profiles, number of responses, queue length, used bandwidth, latency and lost packets. Monitor member 42 preferably employs collectors 29 for this purpose as shown in FIG. 1.

[0067] Monitor member 42 passes the detected information to interpreter 44. In response, interpreter 44 determines the current detected/sampled service, cost and throughput triplet $\{s_1, c_1, T_1\}$. Interpreter 44 feeds this triplet data point to a management element 46 which employs rules engine 38. In turn, based on the rules 32 discussed above, rules engine 38 produces an optimization or modification (solution 39) for management element 46 to take action with. That is, rules engine 38/rules 32 use the received triplet as an indication of state of the enterprise and look up (cross reference) through business ephemeris/precalculated situation-remedy table 22, 24, 26 a corresponding remedy (e.g., modification/optimization 39).

[0068] Management element 46 passes the solution (modification/optimization) 39 to interpreter 44 which translates

the solution 39 into proposed changes at the different levels 13, 14, 15, 16, 17 of abstraction of the enterprise IS architecture. Monitor 42 is responsive to the proposed changes and implements them through action managers 48. In the example of FIG. 4, monitor 42 implements the changes as migration planning, cost, margins, and productivity, SLA/SLG (service level agreement/service level guarantee), user satisfaction, aging, efficiency, parallelism, concurrency, replication, utilization, distribution, priorities, locks, workload balancing, resilience, rerouting, latencies and traffic.

[0069] In another example, excessive response time is observed by monitor member 42 and interpreter 44. Table I shows sample solutions 39 generated for implementation through action managers 48.

TABLE I

Solutions 39 for Observed Excessive Response Time		
Root Cause	Goal Solution (39)	Action (42, 44, 46, 48)
Excessive Physical I/O	Decrease Physical I/O	Increase cache hit ratio
Insufficient CPU resource	Spread I/O	Reallocate data on disks
Software limits parallelism	Increase parallelism	Add more processors in application server, Redistribute workflows
Key process bottlenecked	allocate more resources	Redesign application
Excessive logical I/O	Reduce logical I/O	Change process priority
		Index critical tables
		Redesign application

[0070] Continuing with FIG. 1, off-line mathematical modeling provides further system feedback for purposes of improving business ephemeris/pre-modeled table 22, 24, 26. Solutions 39 are further investigated in an off-line mathematical model 49 that determines network impact of the changes proposed by solutions 39.

[0071] Based on an enterprise architecture description that covers all layers of the assembly 12 model, the off-line mathematic modeling member 49 calculates the impact of each application message (solution 39) on the different components of the enterprise architecture. The mathematical modeling member 49 takes into account each protocol used in the enterprise architecture for the message impact repartition. At each level of the assembly 12 model, the off-line mathematical modeling member 49 adds resource utilization due to the protocols. At this point, the mathematical model 49 has a realistic view of the load of each enterprise architecture component.

[0072] Into passive elements, such as links, algorithms known in the art (such as analytic methods derived from perturbation theory and/or stochastic analysis) are used to determine the response time, throughput and the cost. Into active elements, such as routers, links are made between the different passages on each ingress or egress port and the different router application components or processes. The impact of the enterprise architecture load is associated to each process to reflect the real use of the component. To determine the response time, throughput and cost in such complex systems, a predictive mathematical algorithm, based on perturbation theory, gives results with a maximum

1% variation from the physical observation. Other techniques for determining throughput, cost and response time given the above are suitable.

[0073] The sequence of steps described above enables off-line mathematical model 49 to create all kinds of system architectures for the enterprise. The realization is infrastructure involving MPLS model in which all the routing protocols that allow dynamic routing, the different Class of Services (CoS), fast convergence, VPN, etc. have been taken into account. This model accepts all types of enterprise architecture implementations in order to represent all types of applications running on a distributed infrastructure.

[0074] The off-line mathematical model 49 then feeds the determined impact results to parameters 22, diagnostics 24 and action 26 for purposes of updating the rule base 32. In a preferred embodiment, techniques of U.S. patent application Ser. No. 10/005,481, filed on Oct. 26, 2001 (herein incorporated by reference) are employed to implement this feedback and updating.

[0075] Turning to FIG. 6 and given the above, further embodiments provide modeling and analysis of existing IS architectures as well as that of future (contemplated, to be designed) IS architectures. The basis of each such modeling is the multi-layer mathematical model 62 having a business layer 54, an application/data layer 56 and a technology layer 58 with the added corporate/enterprise layer 13 on top and multi-protocol label switching (MPLS network) layer 18 as a bottom layer.

[0076] The mathematical model 62 produces an initial reference model 64 from which various stress analysis and sensitivity analyses may be made. Various “what-if” scenarios and diagnostics for improvement purposes and the like may be applied to the initial model 64 to produce predictive model(s) 66. Only one such predictive model is shown for simplicity of presentation but it is understood that many such predictive models 66 may be produced.

[0077] Based on the predictive model(s) 66, suggested optimizations and/or solutions 39 may be generated to improve/fix areas using the business ephemeris 22, 24, 26 and rules engine 38 previously described. Examples of actions identified and indications of improvement opportunities are shown at 68, while the model predicted effect is shown at 72 in FIG. 6.

[0078] In some embodiments, techniques of U.S. application Ser. No. 10/014,317 filed Oct. 26, 2001 (herein incorporated by reference) are employed in calculating business performance metrics in construction module 30.

[0079] The modeling of a service oriented architecture and a cost architecture as described above is a quantitative modeling. However, qualitative modeling may be suitable for some embodiments.

[0080] The above described embodiment of FIG. 1 provides real time online diagnostics and problem solving. The modeling of cost, quality of service and throughput on each model layer and the business ephemeris/premodeled situation in remedy table 22, 24, 26 enables impact of any combination of quality (class) of service, cost, throughput or business capacity to be diagnosed. This is graphically illustrated in FIG. 5 where cost is one axis, quality of service is a second axis and throughput a third axis. In one embodi-

ment, along the cost axis is provided a vector of resource and support consumption for a business event (particular and/or global). Along the quality of service axis required response (or time window) to deliver the business event is measured. The number of delivered business events per second is measured along the throughput axis. Similarly cost-based pricing is enabled.

[0081] Further, latency may be used as a measure of throughput in the foregoing.

[0082] FIG. 7 is a diagram of the internal structure of a computer (e.g., client processor/device 50 or server computers 60). Each computer 50, 60 contains system bus 79, where a bus is a set of hardware lines used for data transfer among the components of a computer or processing system. Bus 79 is essentially a shared conduit that connects different elements of a computer system (e.g., processor, disk storage, memory, input/output ports, network ports, etc.) that enables the transfer of information between the elements. Attached to system bus 79 is I/O device interface 82 for connecting various input and output devices (e.g., keyboard, mouse, displays, printers, speakers, etc.) to the computer 50, 60. Network interface 86 allows the computer to connect to various other devices attached to a network. Memory 90 provides volatile storage for computer software instructions 92 and data 94 used to implement an automated management system using a model based architecture assembly (e.g., multilayered mathematical model 12 and monitor 42, interpreter 44, rules engine 38 and supporting code 32, 34, 36, business ephemeris 22, 24, 26 and other features code detailed above in FIGS. 1-4), as well as an embodiment of the present invention. Disk storage 95 provides non-volatile storage for computer software instructions 92 and data 94 used to implement an embodiment of the present invention. Central processor unit 84 is also attached to system bus 79 and provides for the execution of computer instructions.

[0083] In one embodiment, the processor routines 92 and data 94 are a computer program product (generally referenced 92), including a computer readable medium (e.g., a removable storage medium such as one or more DVD-ROM's, CD-ROM's, diskettes, tapes, etc.) that provides at least a portion of the software instructions for the invention system. Computer program product 92 can be installed by any suitable software installation procedure, as is well known in the art. In another embodiment, at least a portion of the software instructions may also be downloaded over a cable, communication and/or wireless connection. In other embodiments, the invention programs are a computer program propagated signal product embodied on a propagated signal on a propagation medium (e.g., a radio wave, an infrared wave, a laser wave, a sound wave, or an electrical wave propagated over a global network such as the Internet, or other network(s)). Such carrier medium or signals provide at least a portion of the software instructions for the present invention routines/program 92.

[0084] In alternate embodiments, the propagated signal is an analog carrier wave or digital signal carried on the propagated medium. For example, the propagated signal may be a digitized signal propagated over a global network (e.g., the Internet), a telecommunications network, or other network. In one embodiment, the propagated signal is a signal that is transmitted over the propagation medium over a period of time, such as the instructions for a software

application sent in packets over a network over a period of milliseconds, seconds, minutes, or longer. In another embodiment, the computer readable medium of computer program product 92 is a propagation medium that the computer system 50 may receive and read, such as by receiving the propagation medium and identifying a propagated signal embodied in the propagation medium, as described above for computer program propagated signal product.

[0085] Generally speaking, the term "carrier medium" or transient carrier encompasses the foregoing transient signals, propagated signals, propagated medium, storage medium and the like.

[0086] Referring back to FIG. 1, as described above, a model business architecture assembly 12 can be monitored in real time. Results of the monitoring, once interpreted, may be applied to the rule engine 38, which is supported by the rule base 32. The rule base 32 is, in turn, supported by the business ephemeris comprising parameters 22, diagnostic 24 and proposed action 26. Once a solution 39 is found, it is employed by the management element 46 for modifying the information system accordingly. The solution is also applied to the mathematical model 49 for further analysis off-line, the results of which may be applied to update the ephemeris 22, 24, 26.

[0087] In further embodiments, the ephemeris 22, 24, 26 may be employed to create cases that are specific to a subset of the enterprise or business information system, where the cases provide characteristics, diagnosis and fixing action specific to that subset. The cases may also be specific to metrics of the information system. To generate such cases, a model of the information system (such as the assembly 12) is used to generate several possible states of the model (e.g., normal operation, extreme operation, etc.). From these states the corresponding diagnosis and fixing options are determined for each state, thereby building a case base of cases comprising system characteristics, diagnosis and proposed solutions.

[0088] Through a matching process, parameters required to identify a case are extracted at a desired frequency, and the parameters are matched to a case form the case base. These parameters are measured characteristics of the enterprise. These characteristics may be measured by monitors that monitor the mathematical model as shown by monitor 42 in FIG. 1, or measured by monitoring the subject enterprise directly. Once a matching case is identified, a corresponding diagnosis and proposed fixing action are reported, which can include reporting to a user through a user interface and/or reporting to a hardware or software agent. The agent may respond with a fixing action that is applied through a self-healing process. If a matching case cannot be identified, then the extracted parameters are applied to the model to generate a matching case, thereby updating the case base.

[0089] It should be noted that a "business function," as used herein, relates to an operation performed in furtherance of a business transaction or a business relationship. For example, opening a new client account and processing a payment are business functions. A "business process," as used herein, relates to an operation performed by an information system in furtherance of a business function. For example, a business function of processing a payment may

include several business processes, such as (i) receive payment, (ii) post payment, (iii) retrieve balance, and (iv) update balance. Embodiments of the present invention may provide reporting in terms of business functions and/or business processes, and thus reference to either a business function or a business process may be considered to incorporate the other.

[0090] FIG. 8 is a high-level flow diagram of a system 800 for implementing a set of cases in an enterprise information system. The system 800 includes a model based architecture (MBA) assembly 870, which may incorporate features described above with reference to the assembly 12 of FIG. 1. The MBA assembly 870 includes a multi-layered mathematical model 875 and a reference model 880, which may incorporate features of the mathematical model 62, reference model 64 and predictive model 66, described above with reference to FIG. 6. The MBA assembly 870 produces a business ephemeris 850 as described above with respect to elements 22, 24, 26 in FIG. 1. The rule/matching engine 810 receives content from the ephemeris 850 relating to states of the reference model 880, and generates a set of cases (a case base 915, FIG. 9), each case including characteristics, diagnosis and proposed solutions for each state. The rule/matching engine 810 then compares the generated cases to characteristics of the enterprise or business information system 820. These characteristics may be obtained by monitoring a mathematical model 875 of the business system, such as the monitoring described above with respect to the monitor 42 in FIGS. 1 and 4. However, the rule/matching engine 810 only requires information pertinent to comparison with the content of the cases. Thus, monitoring the mathematical model 875 for matching a case may be limited to monitoring system workloads, profiles, availability of resources, and critical or other states, enabling efficient matching between the mathematical model 875 and cases of the case base 915. Because this information pertains to characteristics of the information system, the business information system may be monitored directly, rather than through the mathematical model, to obtain the information necessary to obtain a matching case.

[0091] If a match between the system 820 and a case is found, then the matching case is reported by case agent 830. The agent 830 may take a number of actions depending on the matching case, such as reporting diagnosis and proposed solutions to a user and acting on a proposed solution, without user intervention, by applying a self-healing algorithm to the business information system 820.

[0092] If a match between the system 820 and a case is not found, then the state of the system 820 is considered to be an "outstanding case." The outstanding case is collected to an outstanding cases store 840. In order to maintain a case base 915 that includes cases matching all states of the business information system 820, outstanding cases may be employed as parameters to generate new cases in the case base 915. Through an algorithm comprising steps 861-867, the outstanding case may be reported to a user 863 or a virtual user 864. The outstanding case may be submitted (step 865) as a scenario to the assembly 870, before which it is transformed (step 866) into business, logic and infrastructure data corresponding to respective layers of the mathematical model 875. With the corresponding data, the assembly 870 may generate a model corresponding to the business system 820. Alternatively, the assembly 870 may

apply further analysis to generate a predictive model (not shown), comparable to the predictive model 66 described above with reference to FIG. 6. A corresponding business IS model (a reference model or predictive model) is interpreted (step 867) to provide modeled performance metrics.

[0093] The modeled performance metrics are compared with a set of corporate and business service requirements (step 861), producing respective indications of unacceptable performance metrics of one or more business processes. For business processes having unacceptable performance metrics, modifications to the enterprise IS architecture are determined and proposed to the system architect (user 863) for acceptance. If accepted, the model of the model IS architecture 875 is modified with the accepted modifications and the performance metrics are updated at each layer.

[0094] With the updated metrics, the model based assembly 870 updates the business ephemeris 850 with the updated metrics, including, for example, corresponding situations and remedies associated with the business information system 820. The updated ephemeris 850 may in turn be employed by the rule/matching engine 810 to generate a new case corresponding to the updated metrics of the ephemeris 850. The new case is then added to the case base, thereby updating the set of cases. As a result, the new case may provide diagnosis and proposed solutions to the business information system 820, allowing the case agent 830 to take reporting, self-healing or other actions as described above.

[0095] FIG. 9 is a flow diagram of system 800 matching and reporting cases. The rule/matching engine 810, case base 915, ephemeris 850, interpreter 867 and an action agent 830 are as described above with reference to FIG. 8. The system 800 further provides for multiple modes of reporting, which may be configured to report information, diagnosis and proposed actions that are specific to components of the business information system. Here, four modes of reporting are provided: corporate reporting 961, business reporting 962, infrastructure reporting 963, and network reporting 964. Each mode of reporting provides a view of relevant system metrics, such as throughput, cost efficiency, service quality and scalability. Alternatively, reporting may be specific to such metrics of the information system. The reporting may be provided in real time, which allows a case to be matched to an information system in its current state a provides an immediate, relevant diagnosis and proposed action for the information system. Moreover, case reporting can provide reports in terms of business functions and/or business processes. By operating interchangeably in terms of business functions and business process, the case reporting can provide a common language between business functions and business processes. Thus, embodiments of the present invention can present a business information system as an integrated part of an overall business model, thereby improving accessibility between all levels of the corporation or business.

[0096] In matching a case to the state of a business or enterprise information system, a number of monitors 42a-e monitor the various operations of the instant system. This monitoring incorporates features of the monitor 42 described above with reference to FIGS. 1 and 4. For example, the monitors 42a-e may each monitor one or more levels of a model business architecture that is updated in real time. A corporate monitor 42a monitors large-scale system connec-

tivity between multiple business information systems; a business monitor **42b** monitors structure, connectivity and changes to a particular business; the applications/data monitor **42c** monitors software operation of the information system; the data center monitor **42d** monitors system databases; and the network monitor **42e** monitors the system network. Data from each of the monitors **42a-e** are collected by the data collector **935**, and relevant parameters are extracted by the data transformer **936**.

[0097] By interpreting the data at interpreter **867**, parameters of the system are arranged in a format for matching to a case in the case base **915**. The rule/matching engine **810** performs the matching, and, if a case is found (step **918**), the matching case is received by the interpreter **867**. Depending on the matching case, the interpreter **867** may provide the corresponding diagnosis and proposed action or solution to one or more of the reporting modes **961-964**. Further, the interpreter **867** may provide a corresponding action (step **940**), where the action agent **830** may take action as directed by a user to modify the business information system. The action agent **830** may also take such action automatically (e.g., a self-healing action) without user intervention. If a case is not found (step **918**), then parameters of the outstanding case are applied to the ephemeris **850** for off-line ephemeris computation, which in turn updates the case base **915** with a new case providing a matching diagnostic and proposed action.

[0098] For corporate management, the monitoring, reporting and action may be done with a given frequency (e.g., monthly), measuring global metrics spanning all business of the enterprise. Responsive action may be taken at the high-level business structure of each business. The corporate monitor **42a** monitors corporate operations as described above, and such data is collected by the data collector **935**. If a matching case is found (step **918**), the case is reported as corporate reporting **961**. The corporate reporting may be configured to provide a corporate officer with relevant information on the corporate information system. For example, the reporting **961** may provide a view of cost effectiveness of current hardware and software, productivity, scalability and quality of service, accompanied by proposed actions regarding each. A user may respond by initiating the proposed actions to the interpreter **867**, which controls the action agent **830** to modify the system accordingly.

[0099] End-to-end business management may function comparably to the corporate management described above, wherein the business monitor **42b** collects information regarding the business information and the business reporting **962** shows a diagnosis and proposed action of a matching case. Here, the frequency of the business monitoring and reporting may be higher than for corporate management (e.g., daily or weekly), and the metrics relate to business processes, with proposed action directed to cost and scalability.

[0100] Further, in application and data management, the application/data monitor **42c** and data center monitor **42d** provide updated information on software operation, data allocation and other hardware and software resources. From a matching case, diagnostic and proposed actions on these resources is reported to the business reporting **962** and infrastructure reporting **963** on a periodic basis (e.g., hourly or daily). The reporting metrics may include cache-hit ratio

(CHR) and elongation, which is a measure of time in which business processes are scheduled. Proposed actions may be directed to distribution of resources and priority of business functions and processes.

[0101] Network management may further be provided by matching data collected from the network monitor **42e** and identifying a matching case from the case base **915**. The matching case is reported to the network reporting **964**, and may be reported frequently (e.g., every second) to give up-to-date information on the state of the information system network. Relevant network diagnosis and proposed actions are thus provided to a user accessing the network reporting **964**, and may also be provided to business reporting **962**. The reported metrics may include round-trip delay (RTD) and service level agreement (SLA), and proposed actions may be directed to rerouting traffic through the network, modifying priority to network access points, or reconfiguring network routers in other ways.

[0102] FIG. 10 is a chart **1000** illustrating content of an exemplary case, as well as mechanisms of identifying, acting upon and updating the case. Each of the columns comprises information derived from a business ephemeris and pertains to a case in the case base, as described above. The workload column **1010** includes a number of variables E_A , E_B and E_C , which correspond to different classes of business functions or business processes that are to be completed by the business information system. Such business processes and business functions may be referred to more generally as “events” that are completed by the business information system. The value of each variable E_A , E_B , E_C indicates the number of such processes to be performed. The service time column **1020** includes variables T_A , T_B and T_C , which correspond to the aforementioned workload variables and indicate an estimated time to complete each event. The theoretical throughput column **1030** also comprises three values that correspond to the respective classes of business functions or business processes. The theoretical throughput values indicate the maximum throughput (i.e., number of events that can be delivered per unit time, within given constraints) available for each event. Theoretical throughput may be derived from a range of information about the business information system and the respective business process, such as available system resources, active and queued events, and the service time and resource cost of the business function or process.

[0103] The elongation column **1040** and elongation differential column **1050** provide measures of any delays in performing the presently requested events, as well as the change in this delay from a specified previous time. Elongation may be calculated from the measured response time and the measured execution time. By comparing this value with the reported elongation in a previously-matched case, an elongation differential, indicating a change in elongation over time, can also be determined. In the elongation differential column **1050**, the case provides three ranges in which the elongation differential may fall: less than 20%, less than 100%, and greater than 100%. Likewise, the cost differential column **1060** may indicate the change in operating cost of the business information system over a given time.

[0104] Some of the parameters that may be used in performing diagnostic and remedial actions, including identifying critical and other system states, generating a case and matching a case, are reproduced in Table II, below.

TABLE II

Parameters to Monitor the System and Identify System States	
THROUGHPUT	Total number of events per unit of time.
Theoretical Throughput	The maximum throughput a system will be able to deliver without any contention, conflicts, delays and/or locks.
Current Throughput	The number of events per unit of time a business system delivers.
Throughput Limit:	The maximum number of events per unit of time the system will be able to deliver at acceptable level of service quality.
Throughput Ceiling	The maximum number of events per unit of time with the assumption that the physical resources are over dimensioned and the data model as well as the applications is properly tuned
Throughput New Ceiling	Performance oriented redesign, predicted new throughput, monitored and managed
RESPONSE TIME	Total time of execution of an event charged with all delays, contentions, conflicts and locks during the event life time
Volume _{1,type(i)} *	<T0
Volume _{1,type(i)}	<T1
Volume _{1,type(i)}	<T2
Volume _{1,type(i)}	>Tmax
*Where i = number of distinct classes of events profiles	
EXECUTION TIME	Total time of execution free from any delays, contentions, conflicts and locks during the event life time
Volume _{1,type(i)}	<T0
Volume _{1,type(i)}	<T1
Volume _{1,type(i)}	<T2
Volume _{1,type(i)}	>Tmax (service quality time limit)
ELONGATION	Amount of wait due to any delays, contentions, conflicts and locks during the event life time as percentage of the execution time. Elongation = (Response Time/ Execution Time - 1) × 100%

[0105] Because change in elongation is a factor in determining a correct diagnosis of the information system, the exemplary case implements the elongation differential as such. After a case is matched, the elongation of the matching case is compared to that of a previously matched case. The resulting elongation differential is then matched to one of the value ranges in column 1050. Alternatively, the case matching process could include matching to a precalculated elongation differential, where the matching case would include specific elongation differential values rather than a range of values.

[0106] Each elongation differential range in column 1050 is associated with one or more diagnostic statements, regarded as system diagnoses, indicated in the diagnostic column 1070. For example, if the change in elongation is less than 20%, the case indicates a diagnosis that a content change is required, that a database contention has occurred, or both. From these diagnoses the case further suggests a number of remedial actions to implement in the information system and/or the modeling architecture, as indicated in the remedial actions column 1080. For example, a diagnosis of a database contention may be associated with remedial actions to modify operations of the information system, such

as redistributing the structured query language (SQL), or decreasing logical I/O throughput. Larger elongation differentials may be associated with more severe diagnoses, such as a physical bottleneck at a point in the information system, aging of the infrastructure, and reaching performance limits due to system design. Accordingly, associated remedial actions are indicated in column 1080, such as redistributing workload across the system, redistribute data and logic, and reengineering the information system infrastructure.

[0107] Moreover, the matching diagnoses and proposed remedial actions, along with characteristics of the information system, may be reported to a user, such as in the reporting modes 961-964 described above with reference to FIG. 9. Certain remedial actions may also be implemented automatically, without user intervention, on the information system by way of an agent such as the action agent 830.

[0108] Referring back to FIG. 10, as a result of implementing one or more of the proposed remedial actions, the matching case may no longer accurately characterize the resulting state of the information system. To again obtain a matching case, the case-matching process may be repeated as described above with reference to FIG. 9. However, certain remedial actions may result in case parameters that can be accurately predicted without monitoring the information system. If so, a case update process 1090 may be executed to update the content of a case based on these predicted parameters, rather than repeating the case matching process. One such case update process is described in further detail above with respect to FIG. 8. As a result, the matching case may continue to accurately reflect the information system after certain remedial actions are taken upon the information system.

[0109] FIG. 11 is a block diagram illustrating system parameters produced by an enterprise emulator. Here, embodiments of the invention are adapted for qualitative modeling of a service oriented architecture and a cost architecture. A system providing for case reporting as shown in FIG. 9 may be implemented to report and act upon qualitative business metrics such as throughput, response time and cost as illustrated in FIG. 5. For example, reports 961-964 may be derived from cases having content comparable to the case 1000 of FIG. 10. Vectors corresponding to this case content, including vectors for current and maximum throughput, current and maximum response time, and current and maximum consumption, may be applied as shown in FIG. 11 and described below.

[0110] The enterprise emulator 1110 provides vectors for throughput 1115, response time 1116 and consumption 1117, which are derived from content of a matching case such as the exemplary case of FIG. 10. The vectors may also include maximum values or vectors of throughput, response time and consumption that may result from implementing a proposed action of the case.

[0111] The vectors 1115-1117 are translated and applied to additional business information to provide four reporting "views": productivity and revenue 1150, service quality 1151, cost and cost effectiveness 1152, and scalability 1153. For example, the throughput vector 1115 indicates a rate of business events delivered per unit time. This vector 1115 is applied to a pricing book 1120 that indicates a value for each delivered business event. The resulting application is reported in the productivity and revenue view 1150, which

reports the total productivity achieved in the present case. Moreover, the view **1150** can also report a predicted productivity that would result from implementing a proposed solution in the case. To do so, the throughput vector **1115** is applied to the pricing book **1120** as described above. However, the vector **1115** instead represents the predicted throughput resulting from implementing a proposed solution in the case. As a result, the productivity and revenue view **1150** may provide a report on the productivity of a case matching the present state of the business or enterprise system, as well as the predicted productivity of one or more proposed solutions, thereby enabling a user to consider the effect of implementing solutions in the matching case.

[**0112**] In a similar manner, the cost view **1152** indicates overall cost and cost efficiency of the subject business information system. The consumption vector **1117** is applied to a cost index **1121** having an associated cost for each operation of the information system. Because response time and, accordingly, service quality also affect system cost, a cost of quality metric **1122** is also applied to the cost index **1121**. The resulting cost is indicated to the cost view **1152**. Further, additional system costs may not be accounted for by the vectors **1115-1117** generated from the matching case. If so, these cost factors are captured in the exceptional costs metric **1124**, and provided with a corresponding cost by the cost accounting index **1123** to the cost view **1152**. As a result, the cost view **1152** enables a user to view the overall cost and cost effectiveness of the information system.

[**0113**] The reporting views **1150-1153** may provide a more detailed window of information to a user regarding a reported case. For example, the corporate reporting **961** of FIG. **9** may be implemented as vectors **1115-1117** to produce one or more of the views **1150-1153** of FIG. **11**. For a matching case, corresponding vectors **1115-1117** are applied as described above, resulting in the four views **1150-1153** indicating productivity, service quality, cost and scalability of the present case. Further, predicted outcomes of proposed solutions or remedial actions may also be represented by vectors **1115-1117**. By applying these vectors as described above, a user may further observe one or more views **1150-1153** indicating productivity, service quality, cost and scalability as a predicted outcome of implementing the proposed solution. Thus, a user may view various characteristics of the present enterprise, as well as compare those characteristics to predicted characteristics of an enterprise after a proposed solution is implemented. Through this comparison, a user can determine the effects of implementing a proposed solution.

[**0114**] While this invention has been particularly shown and described with references to preferred embodiments thereof, it will be understood by those skilled in the art that various changes in form and details may be made therein without departing from the scope of the invention encompassed by the appended claims.

What is claimed is:

1. A computer implemented method for providing information system management, comprising:

obtaining a business ephemeris associated with a multi-layer mathematical model of an information system architecture of an enterprise, the business ephemeris including a plurality of corresponding situations and remedies related to enterprise operation, the math-

ematical model including a business layer, an application layer and a technology layer;

generating, from the business ephemeris, a set of cases relating to states of the mathematical model, the set of cases comprising characteristics, diagnosis and proposed solution for each state;

matching a case of the set of cases to characteristics of the enterprise; and

reporting a diagnosis and solution corresponding to the case.

2. The method of claim 1, further comprising applying a proposed solution corresponding with the diagnosis to the information system architecture.

3. The method of claim 2, wherein the proposed solution is applied without user intervention.

4. The method of claim 1, wherein the reporting includes providing at least one report that is specific to a subset of the enterprise.

5. The method of claim 4, wherein the subset is one of corporate management, business management, application and data management, and network management.

6. The method of claim 4, wherein the at least one report includes performance metrics, the performance metrics being at least one of scalability, productivity, service quality and cost effectiveness.

7. The method of claim 1, further comprising updating the set of cases, the updating comprising:

applying characteristics of the enterprise to the mathematical model to produce an associated new state of the mathematical model;

from said new state, updating the business ephemeris to include situations and remedies related to the performance metrics;

from the updated business ephemeris, generating a new case relating to the new state, the new case including characteristics, diagnosis and proposed solution for the new state; and

including the new case in the set of cases.

8. The method of claim 7, wherein said updating the set of cases is performed in response to an indication that characteristics of the enterprise do not match a case of the set of cases.

9. The method of claim 1, further comprising collecting data from a plurality of monitors monitoring characteristics of the enterprise information system.

10. The method of claim 9, wherein the plurality of monitors monitor at least one of a network, data center, software application, business information system structure and corporate information system structure.

11. The method of claim 9, further comprising transforming collected data for at least one of matching to a case of the set of cases and updating the mathematical model.

12. A computer system for providing information system management, comprising:

a business ephemeris associated with a multi-layer mathematical model of an information system architecture of an enterprise, the business ephemeris including a plurality of corresponding situations and remedies

related to enterprise operation, the mathematical model including a business layer, an application layer and a technology layer;

a set of cases relating to states of the mathematical model, the set of cases comprising characteristics, diagnosis and proposed solution for each state;

a matching engine to match a case of the set of cases to characteristics of the enterprise; and

an interpreter to report a diagnosis and proposed solution corresponding to the case.

13. The system of claim 12, further comprising a user interface that conveys information relating to the diagnosis and solution and enables a user to apply a proposed solution corresponding with the diagnosis to the information system architecture.

14. The system of claim 13, further comprising an action agent that applies the proposed solution without user intervention.

15. The system of claim 13, wherein the information includes at least one report that is specific to a subset of the enterprise.

16. The method of claim 15, wherein the subset is at least one of corporate management, business management, application and data management, and network management.

17. The system of claim 15, wherein the at least one report includes performance metrics, the performance metrics being at least one of scalability, productivity, service quality and cost effectiveness.

18. The system of claim 12, further comprising an updating module to update the set of cases, the update comprising:

applying characteristics of the enterprise to the mathematical model to produce an associated new state of the mathematical model;

from said new state, updating the business ephemeris to include situations and remedies related to the performance metrics;

from the updated business ephemeris, generating a new case relating to the new state, the new case including characteristics, diagnosis and proposed solution for the new state; and

including the new case in the set of cases.

19. The system of claim 18, wherein said update to the set of cases is performed in response to an indication that characteristics of the enterprise do not match a case of the set of cases.

20. The system of claim 12, further comprising collectors to collect data from a plurality of monitors monitoring characteristics of the enterprise information system.

21. The system of claim 20, wherein the plurality of monitors monitor at least one of a network, data center, software application, business information system structure and corporate information system structure.

22. The system of claim 20, wherein the matching engine transforms collected data for matching to a case of the set of cases.

* * * * *