



US 20050091380A1

(19) **United States**

(12) **Patent Application Publication**

**Gonen et al.**

(10) **Pub. No.: US 2005/0091380 A1**

(43) **Pub. Date: Apr. 28, 2005**

(54) **METHOD AND SYSTEM FOR IMPROVING ESTABLISHING OF A MULTIMEDIA SESSION**

(52) **U.S. Cl. .... 709/227**

(76) **Inventors: Edward Gonen, Yoqneam Illit (IL); Guil Yedlin, Kiriati Tivon (IL); Anupam Sahai, Cupertino, CA (US); Shai Toren, Moshav Alonci Aba (IL); Boris Rakhlin, Haifa (IL)**

(57) **ABSTRACT**

Multimedia communication systems and methods are disclosed. An exemplary system comprises a server adapted to communicate with two or more multimedia endpoints; and a MCU adapted to communicate with the at least one server and the multimedia endpoints, wherein the server contains a module for instructing the multimedia endpoints to call a dial number for the MCU to establish a multimedia conference in response to a requested list of multimedia endpoints received from one of the multimedia endpoints. An exemplary method for establishing a multimedia conference comprises receiving at a server from a first endpoint a requested list of second endpoints desired to participate in the multimedia session; reviewing at the server the status of the second endpoints; and if the status of a particular second endpoint is an available status, instructing at least some of the available second endpoints to call a dial number for a MCU to participate in the multimedia conference. A further exemplary method allows for a determination to be made whether a multipoint or point-to-point conference is required, and allows a user to leave a message for users who unavailable to participate in the conference.

Correspondence Address:

**WONG, CABELLO, LUTSCH, RUTHERFORD & BRUCULERI, P.C.**  
**20333 SH 249**  
**SUITE 600**  
**HOUSTON, TX 77070 (US)**

(21) **Appl. No.: 10/941,790**

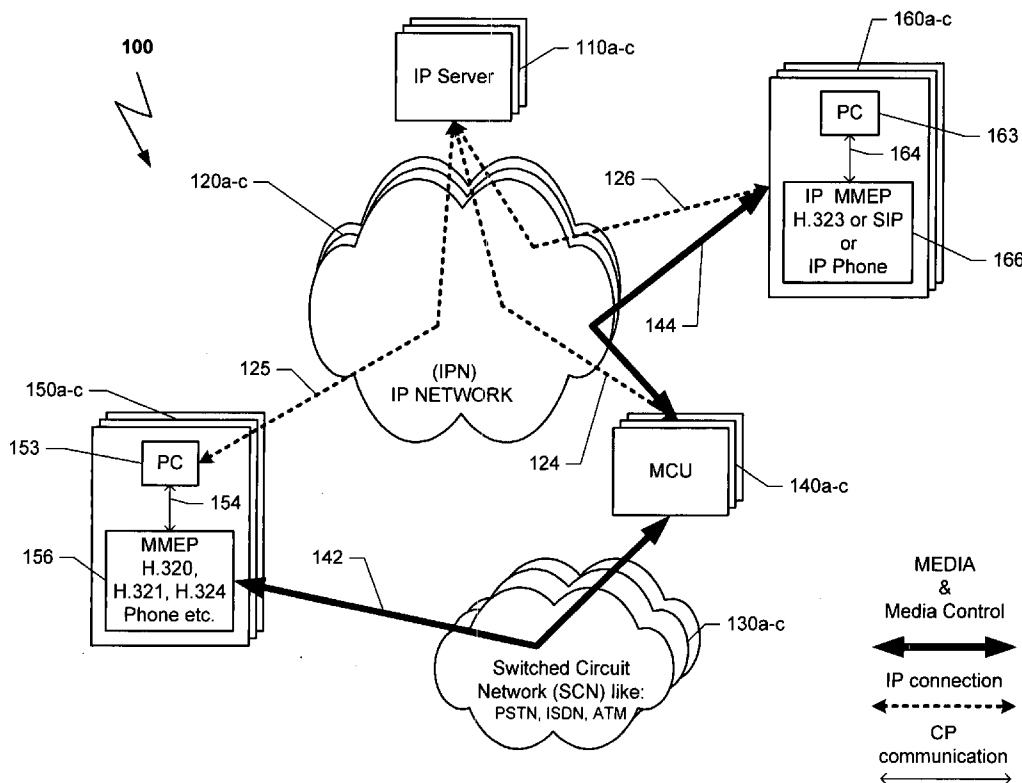
(22) **Filed: Sep. 15, 2004**

**Related U.S. Application Data**

(60) **Provisional application No. 60/503,968, filed on Sep. 19, 2003.**

**Publication Classification**

(51) **Int. Cl.<sup>7</sup> ..... G06F 15/16**



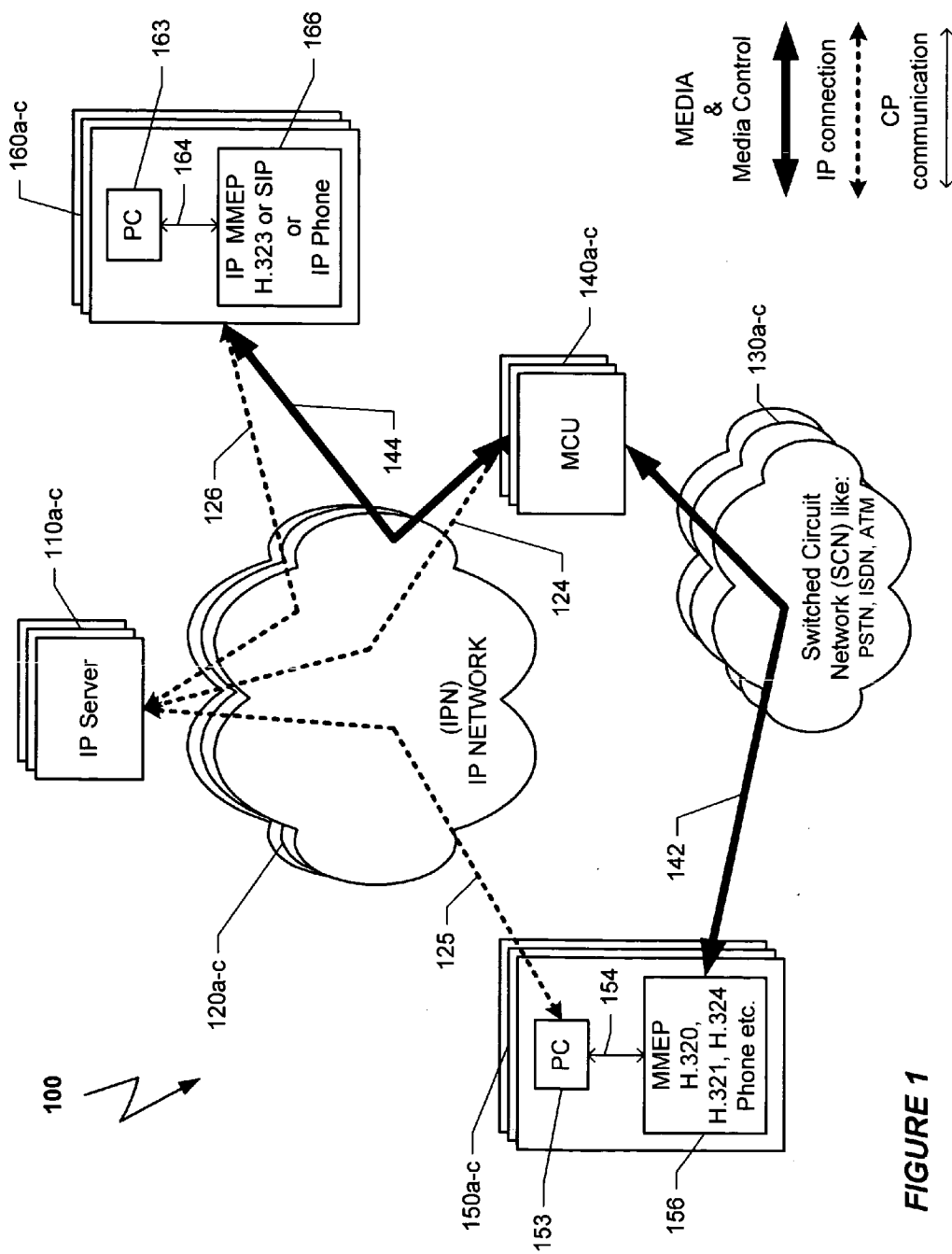


FIGURE 1

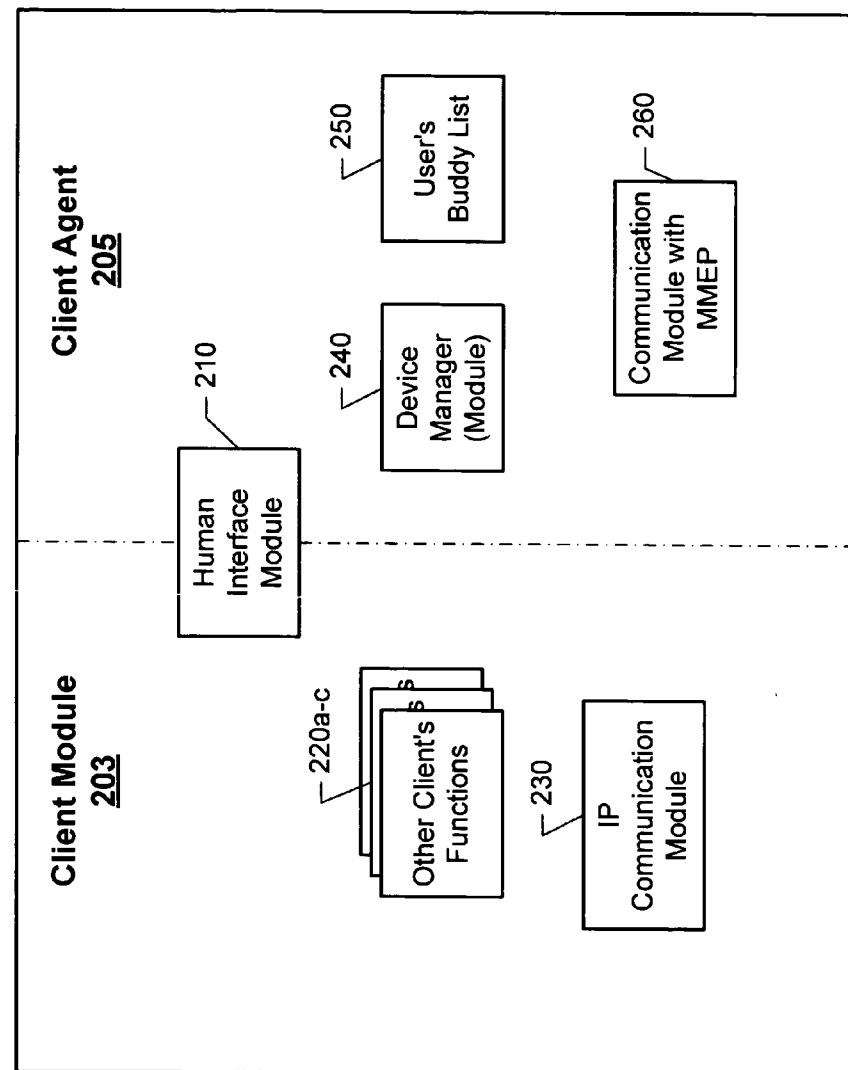


FIGURE 2

200 ↗

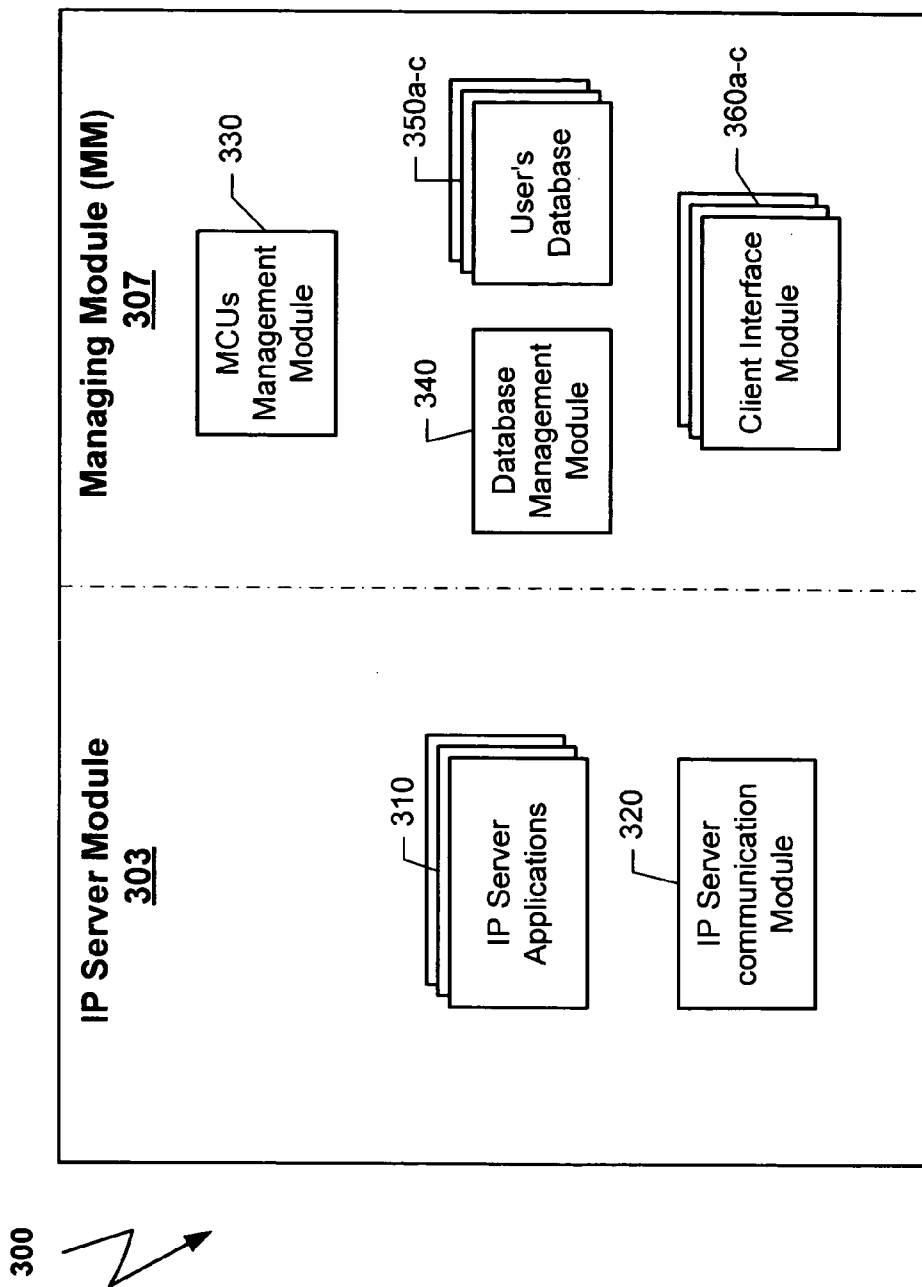


FIGURE 3

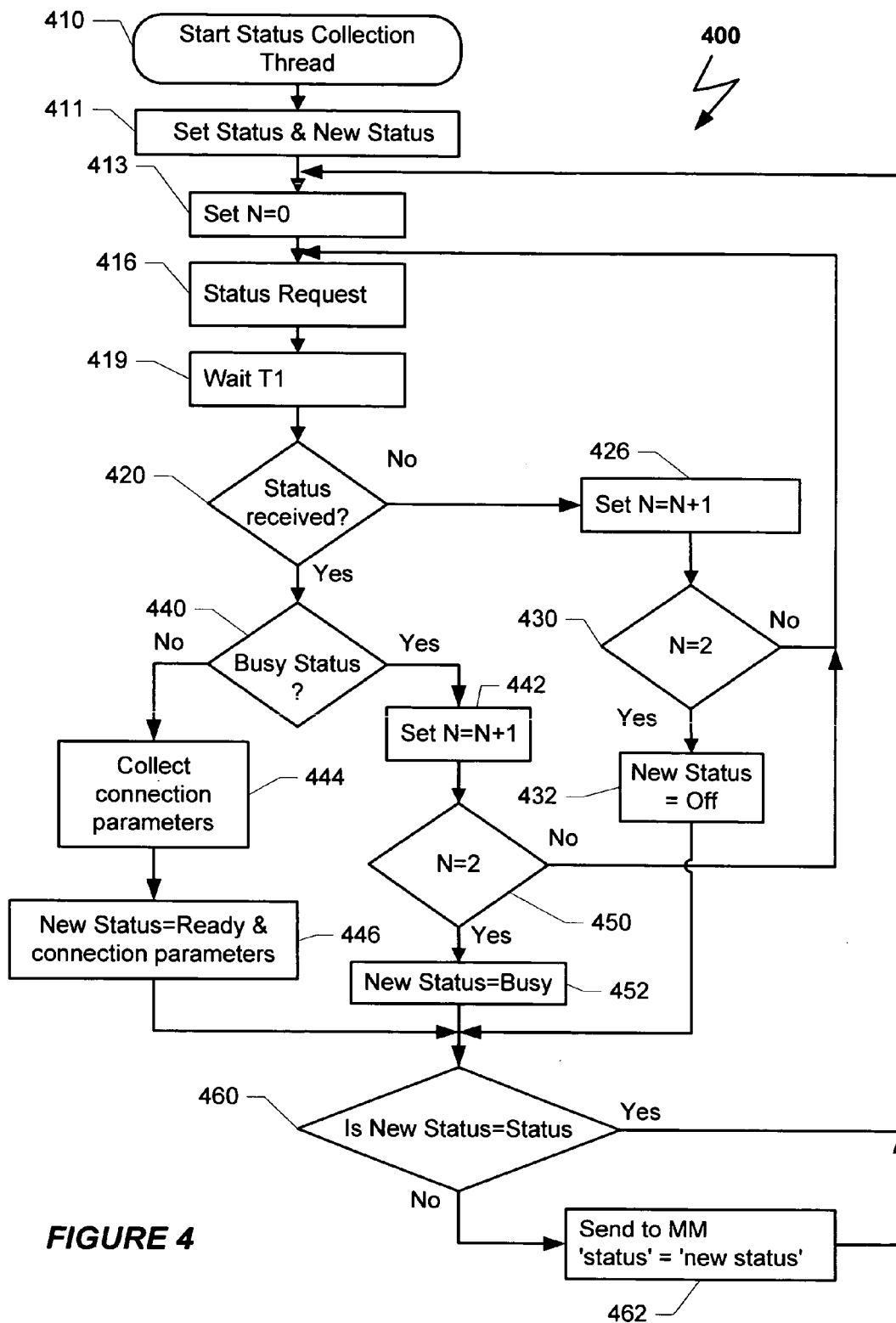


FIGURE 4

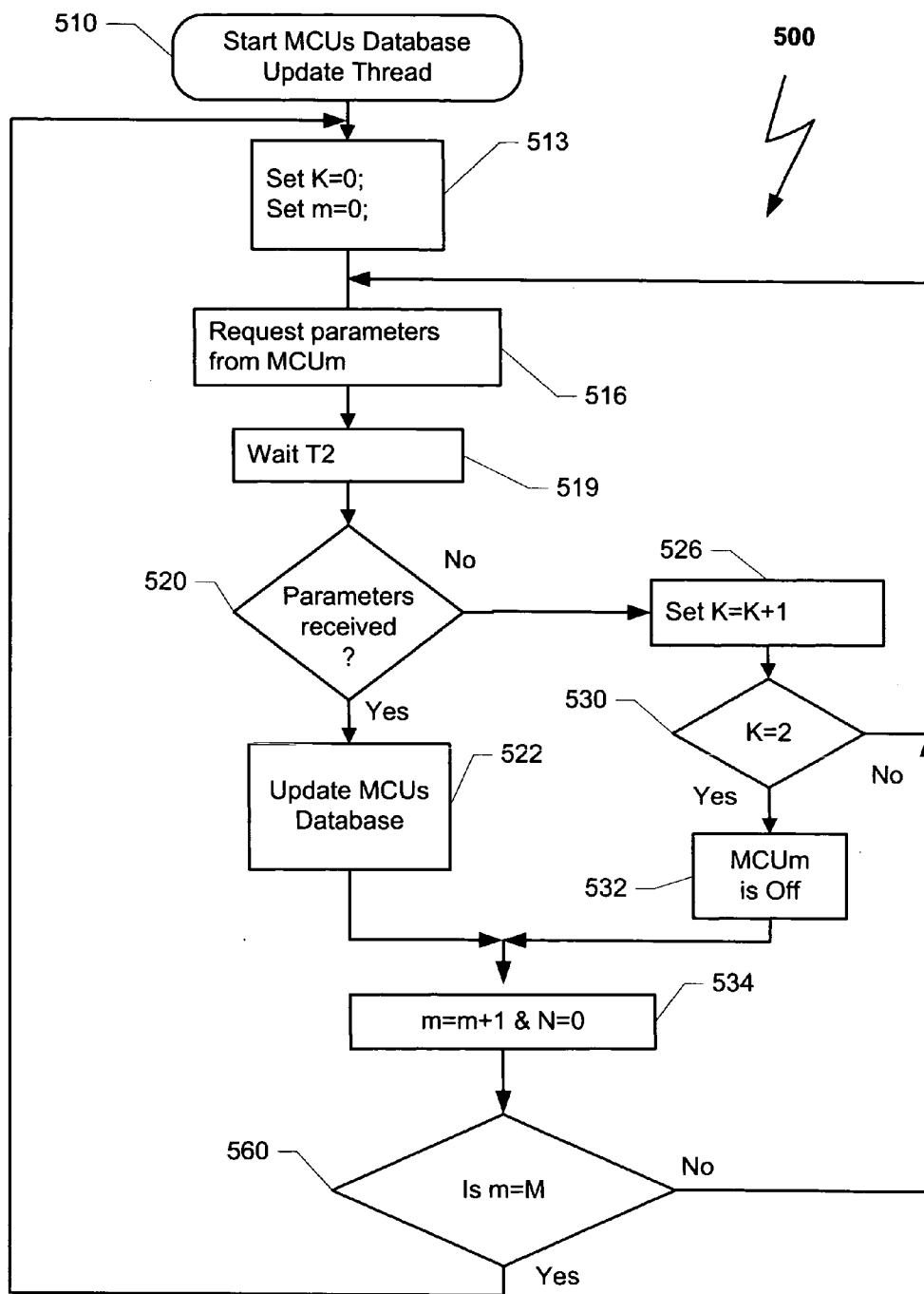
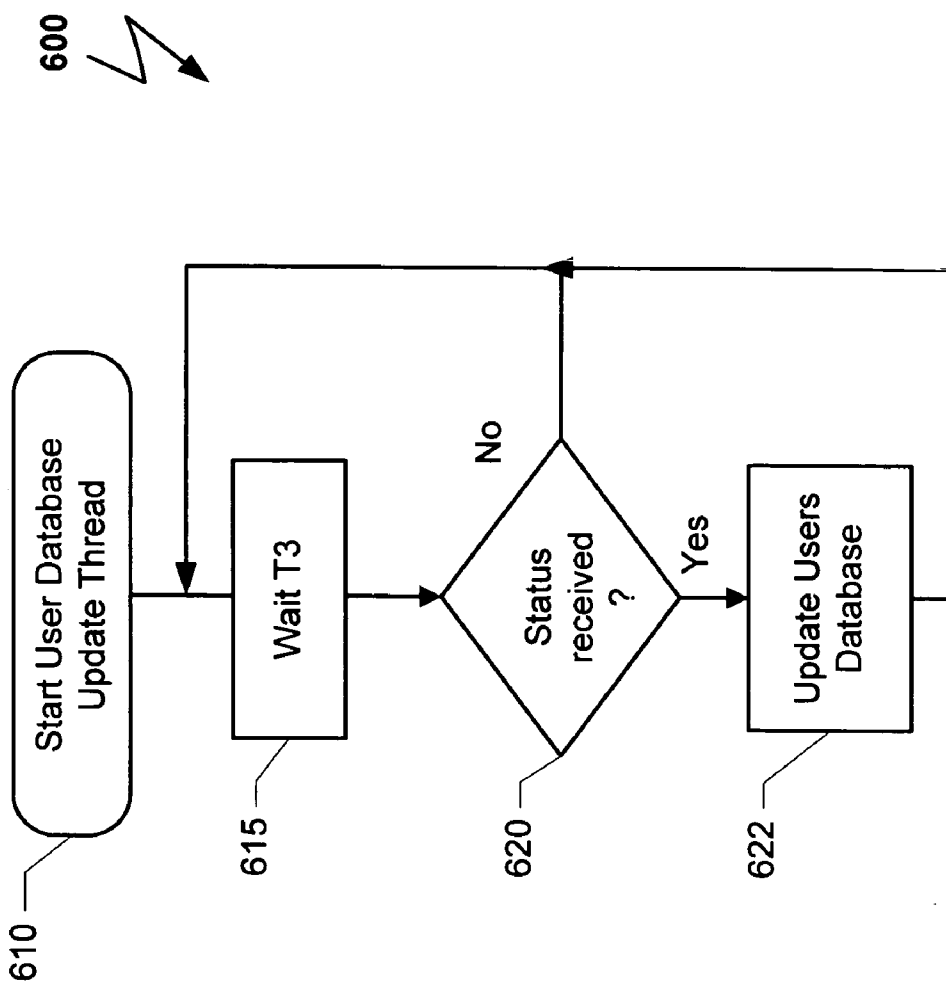


FIGURE 5

FIGURE 6



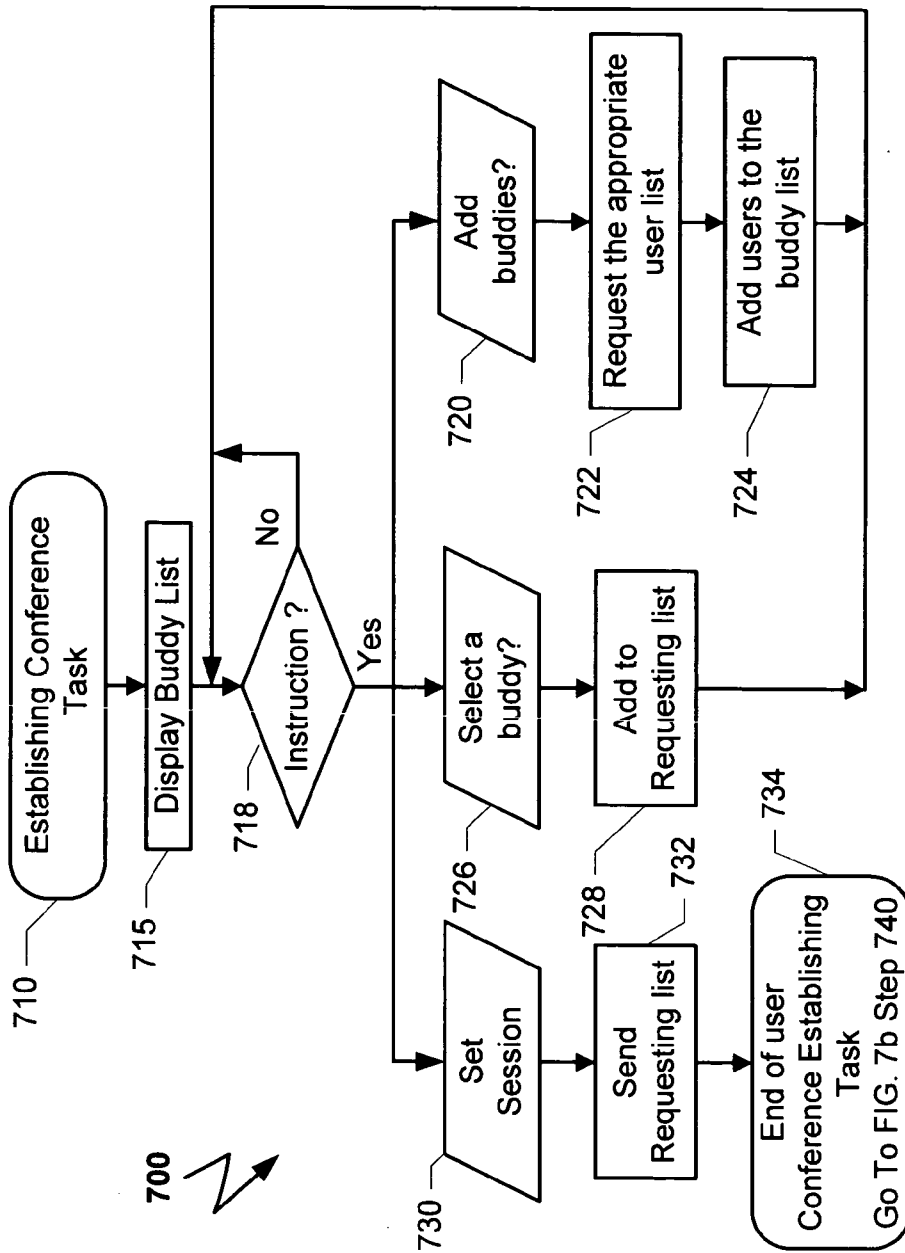
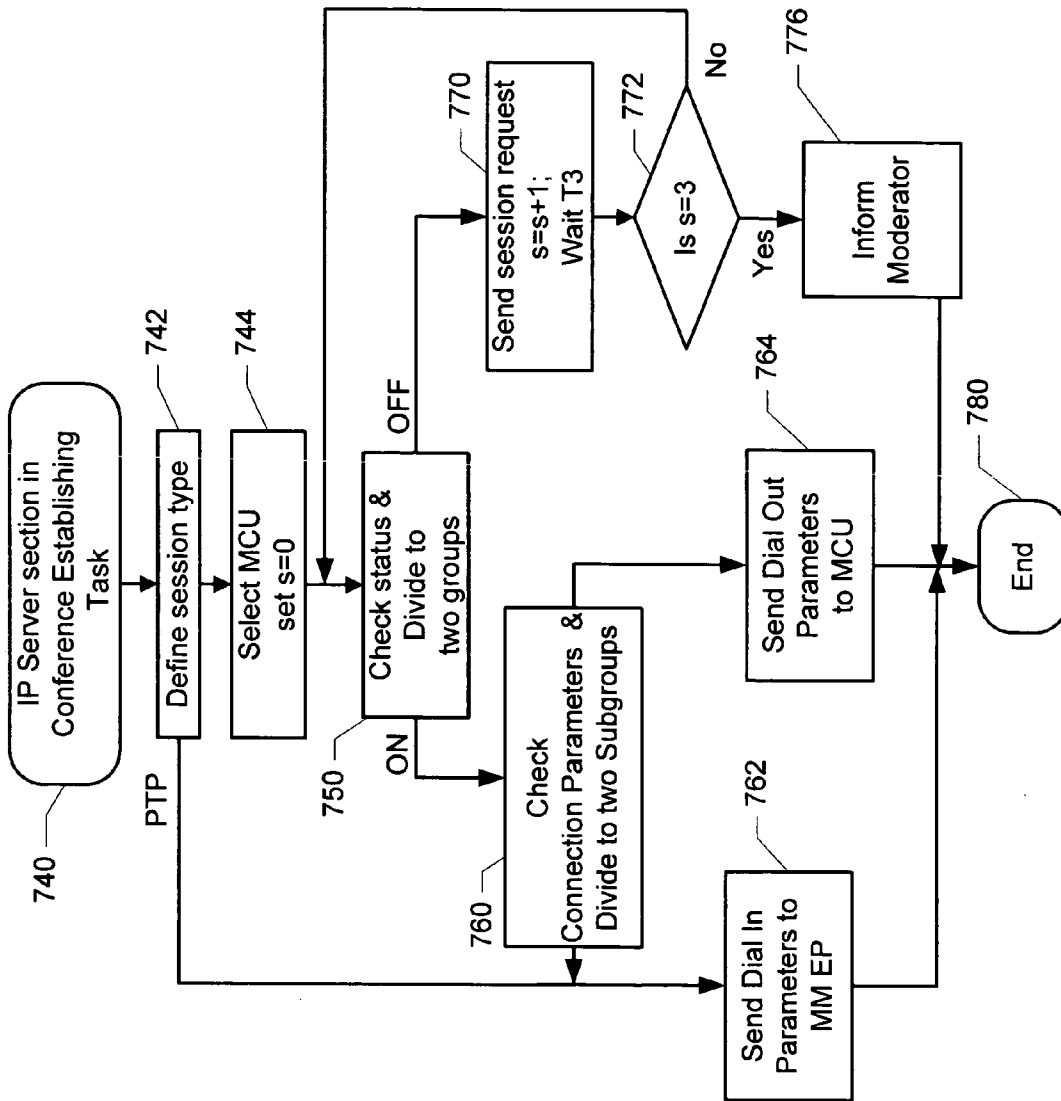


FIGURE 7A

FIGURE 7B



## METHOD AND SYSTEM FOR IMPROVING ESTABLISHING OF A MULTIMEDIA SESSION

### CROSS REFERENCE TO RELATED CASES

[0001] This application is a non-provisional filing based on U.S. Provisional Patent Application Ser. No. 60/503,968, filed Sep. 19, 2003, which is incorporated herein by reference, and to which priority is hereby claimed.

### FIELD OF THE INVENTION

[0002] This invention relates generally to the field of multimedia communication, and more particularly to providing an efficient and easy way for establishing an impromptu multimedia communication session or conference.

### BACKGROUND

[0003] As the geographical domain in which companies conduct business continues to expand, multimedia conferencing technology attempts to bring the world closer together. However, as with most user-based technologies, the user interface for establishing and controlling a multimedia conference does not provide a convenient way to spontaneously establish such a conference between endpoints. Thus, generally, a multimedia conference is scheduled in advance by a conference moderator, who must establish or receive a dial-in number, an IP address, and/or a URL for the conference, and distribute this information in advance to the various conference participants as well as the time of the conference. The participants may then dial in to the conference at the appropriate time.

[0004] A multimedia endpoint is a terminal on a network capable of providing real-time one way or two way audio and/or visual communication and/or data with other terminals or with a control unit. When more than two endpoints participate in a conference, a Multipoint Control Unit (MCU) is used to connect the conferees together. An MCU is a conference controlling device typically located in a node of the network or in a terminal which receives several logical or physical channels from access ports, and which in accordance with certain criteria processes audiovisual and data signals and distributes them to the connected channels. Examples of MCUs include the MGC-100, which is available from Polycom, Inc. Other exemplary MCUs can be software MCUs such as, but not limited to, OPENMCU described at [www.openh323.org](http://www.openh323.org), which is incorporated by reference herein. An MCU may control audio conferences, audio/video conferences, audio and data conferences, audio/video/data conferences, etc.

[0005] There are occasions when a user (or peer or conferee or participant) may communicate with another user using conventional means such as a telephone (audio) or by instant messages (text chat) over an IP-based network. Later, these users may wish to upgrade such means of communication, for example, by adding one or more users or by adding multimedia to their communication. However, such an upgrade is complicated for the reasons set forth above, as generally many aspects of the upgraded conference would need to set up in advance. In short, the difficulty of establishing an impromptu multimedia communication prevents users from adding multimedia capabilities and/or additional users to their conference session.

[0006] Thus, it is evident that current technologies make establishing an impromptu multimedia communication difficult, which hampers the utility of such communications. Therefore, there is a need in the art for new methods and systems to allow impromptu multimedia conferences to be established simply and easily.

### SUMMARY

[0007] The present invention solves the above-described needs by offering new methods and systems for managing the establishment of a multimedia communication among two or more users. The system may comprise a managing module (MM) that is added to a IP server (IPSR), such as a Polycom Web Office server sold by Polycom, Inc. However, the present invention is not limited to such a server, and other exemplary embodiments of a managing module may be installed in other IP servers offering data communications and/or data conferencing over an Internet Protocol (IP) network for example.

[0008] The MM communicates with the users of the system and with one or more MCUs, preferably using an IP network or any other type of network connection. Communication with the users is accomplished through a "client agent" resident on the users' computers. The client agent communicates with the user's multimedia endpoints and reports the status (on, off, etc.) of the endpoints to the MM. The MMs may send indications and instructions to the users by sending instant messages, and may communicate with the MCUs via an XML, HTML API, or any other communication means that is installed in and understood by the MCUs.

[0009] The MM may include a database containing a plurality of "buddy lists." Each user may have one or more buddy lists, and each corporation may have one or more common buddy lists that may be accessed by authorized users. Each entry in the buddy list may comprise, among other information, the following fields: user name; multimedia endpoints and the capabilities of each; dialing numbers for the multimedia endpoints; the current status of the endpoints (e.g., on, off, busy); the current status of the user (e.g., away, available, unavailable etc.). A user may define his status to be seen differently by different buddies.

[0010] When a user of the system wishes to establish a multimedia communication with one or more users (herein referred to as the conference's "moderator"), the moderator calls the appropriate buddy list from the MM, thereby generating a requested list. The moderator may then push a button that instructs the MM to establish a multimedia session. From this point, the communication responsibilities for the conference are transferred to the MM at the IPSR. Based on parameters such as the number of endpoints that are involved in the session, the type of the endpoints, the endpoint capacities, the availability of MCUs, the network topology, etc. the MM decides on the best way to connect the buddies (point-to-point, MCU, bit rate, etc.).

[0011] The MM checks the status of the endpoints of each one of the users in the requested list. If the multimedia endpoint for a given user in the requested list is off-line or busy, then the MM may send a message (e.g., an instant message) to that user informing him that the moderator is attempting to contact him and requesting him to activate his device. In parallel, a message may be sent to the user's

computer to inform him of the same. Thereafter the MM continues to query the next user in the requested list.

[0012] If a given user's endpoint is on-line, then the MM sends a request to the MCU to establish a connection between the moderator and that user, and/or to add that user to a conference that has been already established. The request to the MCU may include the communication parameters of the moderator, which may include his dialing number or IP address; the type of his/her multimedia endpoint; the endpoint's capabilities, etc. Then the MM may move to the next user in the requested list. After the last user in the requested list is reached, the MM may wait for a certain period and return to the beginning of the list checking the current status of users that were off-line or busy during the previous cycles. The MM may repeat this loop several times or may continue until all the users in the requested list are connected. In an alternate embodiment, the moderator may be transferred to a multimedia answering system in order to leave a multimedia message for the unavailable peer. At the end of each loop, the MM may send an indication to the moderator regarding the current status of each one of the users in the requested list.

[0013] In other exemplary embodiments, the disclosed systems and methods monitor the status of the multimedia session to attempt to correct undesirable situations. For example, if an MCU fails, an alternative substitute MCU may be searched for; or, if a user is disconnected, the system may try to connect him again by informing the MCU to dial a "dial out" that is associated with that user or requesting the client agent at the user's computer to instruct the user's endpoint to call a "dial in" that is associated with the multimedia session.

[0014] In yet another embodiment, a user in the buddy list may have more than one endpoint associated with a user. In such a case, if the first endpoint is not responding to the connection, the MM may try to reach the unavailable user via other endpoint in the list.

[0015] Other objects, features, and advantages of the present invention will become apparent upon reading the following detailed description of the embodiments along with the accompanying drawings and appended claims.

#### BRIEF DESCRIPTION OF THE DRAWINGS

[0016] FIG. 1 is a block diagram illustrating the topology of an exemplary audio and/or multimedia conferencing system using an exemplary embodiment of the disclosed systems and methods.

[0017] FIG. 2 is a block diagram of exemplary software modules of a client computer.

[0018] FIG. 3 is a block diagram of an exemplary embodiment of modules in an IP server.

[0019] FIG. 4 illustrates a flowchart of an exemplary status collection routine that may be used by a client agent.

[0020] FIG. 5 illustrates a flowchart of an exemplary MCUs update task that may be used by an exemplary IP Server.

[0021] FIG. 6 illustrates a flowchart of an exemplary user database update task that may be used by an exemplary IP Server.

[0022] FIGS. 7a and 7b illustrate a flowchart of an exemplary method that may be used to establish a multimedia session.

#### DETAILED DESCRIPTION

[0023] FIG. 1 is a block diagram illustrating the topology of an exemplary audio and/or multimedia conferencing system 100 that uses an exemplary embodiment of the present invention. The system 100 includes one or more IP Servers 110a-c; a plurality of users 160a-c; a plurality of users 150a-c; one or more Switched Circuit Networks (SCNs) 130a-c; and one or more Multipoint Control Units (MCUs) 140a-c. Each user 160 may have a multimedia endpoint (MMEP) or an IP phone 166 capable of multimedia conferencing over an IP network, and/or an associated PC 163 having an IP connection 126 over IP network (IPN) 120 and/or IP cellular phone, or cellular PDA. Each user 150 likewise may have a multimedia endpoint (MMEP) or a phone (e.g., analog, digital or cellular) 156 capable of multimedia conferencing over Switched Circuit Network (SCN) 130a-c, and/or an associated PC 153 having an IP connection 125 over IPN 120. Although three units of each item are shown for convenience of presentation, there may be fewer or more than three of each item in an actual conferencing system. Also, there is no requirement that the number of each item be the same as the number of any other item.

[0024] In general and as just noted, there are two types of users in the exemplary embodiment of FIG. 1: users 150a-c and 160a-c. The two types of users differ from each other by the type of their multimedia endpoint and by the network that carries real-time communications to or from the user. User 150 may have an audio/multimedia endpoint 156a-c that is connected over connection line 142 to a SCN 130a-c, which may be a PSTN, ISDN, an ATM network, or combination of those. Audio/multimedia endpoint/terminal 156a-c may provide speech only (e.g., analog telephone), speech and data, speech and video, or speech, data and video. Real-time communication over SCN 130a-c may be based on International Telecommunication Union ("ITU") standards, such as but not limited to H.320, H.321, and H.324, which standards are hereby incorporated by reference. SCN 130a-c may comprise gateways (not shown in the drawings) for facilitating communication between different networks.

[0025] Each users 150a-c may also have a computer 153, such as a personal computer, a laptop, a palm computer (PDA), a notebook, cellular phone, a cellular PDA, or any other like programmable device capable of similar operation (collectively referred to for simplicity as a "PC"). PCs 153 may be part of the multimedia endpoint 156 or may be separate. PCs 153 may be connected via connection 125 over an Internet Protocol (IP) based network 120, and may communicate over an Intranet with users in the organization or over the Internet with others uses as well as with IP Servers 110a-c. PCs 153 may also communicate with multimedia endpoint 156 over connection 154, which may be a common connection such as serial connection RS232 connection, a wireless connection based on Bluetooth protocol, an Infra Red (IR) connection, an IP connection over a LAN or the Internet, etc. In alternate embodiments a user's PC 153 may also act as an IP server 110a-c.

[0026] Users 160 may have a multimedia endpoint 166 that is connected over IP connection 144 to an IPN 120,

which may comprise the Internet, an intranet, a LAN, or a similar network, or combinations of these. The endpoints **166** can vary in their connectivity. For example, some of the endpoints **166** may be connected directly to the Internet, while others may be connected to the Internet through a corporate intranet complete with routers, firewalls, etc. Multimedia endpoint **166** may provide speech only (e.g. IP Phone), speech and data, speech and video, or speech, data and video. Real-time communication over IPN **120** may be based on International Telecommunication Union (“ITU”) standards (e.g., H.323), or the Internet Engineering Task Force’s Session Initiation Protocol (SIP) standard. More information about the SIP standard may be found at the website <http://www.IETF.org>, and this standard is incorporated herein by reference. Although not shown, IPN **120** may comprise gateways, gatekeepers, soft switches and other network devices.

[0027] Like users **150a-c**, users **160a-c** may also have a PC **163**, which may be part of the endpoint **166** or separate therefrom. PCs **163**, and there connection **164** to the endpoints **166**, are similar to PCs **153**/connections **154** described above.

[0028] Among other tasks and applications, PCs **153** and **163** preferably run a client agent software program. The client agent interfaces with the users, with the multimedia endpoints **156** or **166** via connections **154** or **164** respectively, and with the MMs that are installed in the IP server **110a-c** via IP connections **125** or **126** respectively. A detail description of the client agent and its operation is disclosed below with respect to FIGS. 2, 4, and 7.

[0029] In alternate embodiment (not shown in the drawing), in which endpoints **156/166** may be controlled via an IP network, connections **154/164** may be IP connections over an Intranet or over the Internet. In such an embodiment, the client agent may be divided into two segments. The first segment may reside in the IP server **110a-c** and is used for interfacing with the endpoints **156/166**, and may control and/or collect statuses from the endpoints. The other segment may reside in the users’ PCs **153/163** and is used for interfacing with the users as well as for managing the private buddy lists of the user. In such a configuration, endpoints **156/166** may be associated with one or more users.

[0030] In another embodiment, the connection **154/164** between the PCs **153/163** and endpoints **156/166** is flexible and may be changed by the user according to his current needs. Such an embodiment may be used in systems in which the connection **154/164** comprises an IP connection over a LAN or a wireless connection as mentioned earlier. Each endpoint **156/166** can have an ID number, and a user may configure the connection **154/164** using that ID number, which is then sent to the IP server **110a-c** as an update.

[0031] IP Servers (IPSR) **110a-c**, among other tasks and applications, may run a software program, which is referred as Managing Module (MM). The MM manages the establishment of one or more multimedia sessions between two or more of users **150a-c** and/or **160a-c**. IPSRs **110a-c** may be installed, for example, in an Intranet of a corporation, or may be installed in a multimedia operator’s premises, close to MCUs **140a-c**. In the latter case, the IPSRs **110a-c** and the MCUs **140a-c** may be connected over a LAN and may use a load balancer for distributing the load among them. The IPSR **110a-c** may also communicate with the MCUs **140a-c**

via RS232 protocols, SCSI protocols, wireless protocols, etc., or the IPSRs may constitute a portion of the MCUs.

[0032] The MM preferably manages a user database and contains the update status of each one of the endpoints **156/166** as well as their connection parameters and capabilities. Such connection parameters may include the ‘dial in’ number and/or IP address for the endpoints **156/166**, minimal connectivity speed, maximal connectivity speed, type of communication standards that can be supported by the endpoint, etc.

[0033] The MM preferably also receives, via the client agent at the PCs **153/163**, and the IP connections **125/126**, a request to establish a multimedia session, which in turn causes the MM to begin a request handle task. The request handle task may be implemented in different ways. In the case of a point-to-point session between two users only, the MM at the appropriate IPSR **110a-c** may send the connection parameters of called user to the requesting client agent at the appropriate PC **153/163**, and can instruct the requesting client agent to communicate the instruction with the connection parameters to its associated endpoint **156/166** to enable communication with the called endpoint **156/166**.

[0034] In the case of a multipoint session between three or more users, the MM at the appropriate IPSR **110a-c** may request one or more MCUs **140a-c** to initiate a multimedia session. There are some cases in which an MCU may be selected to set a session between two endpoints. For example, an audio session between two peers that also requires data may need an MCU; also an MCU or gateway may be used when a point-to-point connection fails, or when transcoding is required, etc. In any event, the MM preferably sends the connection parameters of “dial out” users (i.e., user that the MCU calls to establish a multimedia session) to the appropriate MCU **140a-c**. The MM preferably also sends the connection parameters of the appropriate MCU **140a-c** to the client agent at the PCs **153/163** of the “dial in” users (i.e., users who call the MCU to establish a multimedia session), and requests the client agent to instruct such dial-in endpoints **156/166** to call the MCU. The “dial out” option may be used to add a user (e.g., **150a-c**) who does not have a PC (e.g., **153**). A detailed description of the MM and its operation is disclosed below with respect to FIGS. 3, 5, 6 and 7.

[0035] MCUs **140a-c** may be common MCUs that conduct audio and or multimedia multipoint communication. Among other ways of receiving requests to establish a multimedia session between two or more endpoints, MCU **140a-c** may receive a request from IPSR **110a-c** via IP connection **124** or any other type of connection. The request preferably carries the required information to establish the session, such as the dial-in number and/or IP address of the appropriate endpoints **156** or **166**, their connection parameters, identification information, etc. The request may be based on HTML or XML protocol and may be processed by an appropriate Application Program Interface (API) at the MCU.

[0036] FIG. 2 shows a block diagram of exemplary software modules in a client computer **200**. Client computer **200** preferably comprises, among other software modules, two main modules: a client module **203** and a client agent **205**. An exemplary client module **203** comprises the following modules: a Human Interface Module (HIM) **210**; one or

more Other Client Functionality Modules (OCFM) **220a-c**; and a IP Communication Module (IPCM) **230**. An exemplary client agent **205** comprises a Device Manager Module (DMM) **240**; a User Buddy List Module (UBLM) **250**; and a Communication Module (CM) **260**.

[0037] The HIM **210** is the interface between the user and the rest of the modules of the client computer **200**. HIM **210** may have a graphical user interface that interacts with the user by creating and displaying graphical information and soft keys on the display of the users' PCs **153/163**. HIM **210** may also use Interactive Voice Response (IVR) messages or any other common method that is used for human-machine interaction.

[0038] OCFM **220a-c** comprises an application module that supports other applications (e.g., Microsoft Office, etc.) or other services that may be provided by IP server **100a-c**. An exemplary OCFM **220a-c** may include a data collaboration module, which may be used if the IP server **10a-c** is used as a server for handling data conferences.

[0039] IP Communication Module **230** communicates between the client agent **205** and the IP server **110a-c**, for example, using an IP connection. Over the IP connection, IPCM **230** may send the status of the endpoint **156/166** that is associated with the users' PCs **153/163**. Such status is determined either by the DMM **240**, user requests received via HIM **210**, and data or commands sent from the MM to the different modules of client agent **205**. One important feature of the IPCM **230** is to send indication to the IPSR **110a-c** whether client agent **205** is on-line and active.

[0040] DMM **240** preferably communicates with its associated endpoint **156/166** via communication module **260**, and from time to time may check whether the endpoint is on or not. DMM **240** may instruct the endpoint **156/166** to dial another endpoint's number for a point-to-point session, or to dial an MCU **140a-c**'s number for multipoint session. The instruction may include the required set up of the endpoint as discussed earlier. More information concerning operation of DMM **240** is disclosed below with respect to FIGS. **4** and **7**. In case that the endpoint **156/166** cannot be externally controlled, the DMM **240** preferably requests the user via the HIM **210** to set the endpoint accordingly.

[0041] User Buddy List Module (UBLM) **250** preferably manages a private list normally resident on the PC **153/163** where the client agent **205** resides. Such lists may be created by collecting selected entries of potential users from a main user database that resides in the IPSR **110a-c**. Upon receiving a request to establish a multimedia session, UBLM **250** may display a list of the groups to be selected by the user, and/or a list of the "buddies" (users) in the group. Each entry in the list may have, among other parameters, the name of the buddy, the type of each buddy's endpoint **156/166**, and the current status of those endpoints. Upon selecting a buddy list, a sub list is generated and is sent to the MM in the IPSR **110a-c** for further processing.

[0042] Communication Module (CM) **260** is the interface between DMM **240** and its associated endpoint **156/166**, and communicates with the endpoints via connections **154/164**. An appropriate communication protocol is selected on the basis of the type of connection **154/164** being used (RS232, Bluetooth, etc.). During the installation of client agent **205**, DMM **240** and CM **260** may be configured to suitably function with their associated endpoints **156/166** and/or connections **154/164**.

[0043] In alternate embodiments in which a segment of the client agent **205** resides in the IP server **110a-c**, the DMMs **240** and/or CMs **260** may reside in whole or in part in a client agent section in the IP servers.

[0044] The client agent **205** may be invoked while using other applications. For example, a user currently using a Microsoft Word application and desiring to establish a multimedia session may invoke the client agent **205** by selecting a certain function in that application, for example, from within the "Tools" menu of Microsoft Word. In this example, the client agent **205** may constitute a "plug in" to the Microsoft Word application. Of course, the client agent **205** may include its own Application Program Interface (API) separate from any other hosting application.

[0045] In an alternate embodiment, the hosting program constitutes a scheduling software application, such as Microsoft Outlook, for example. A plug in module may be added to the scheduling application, which offers an additional key to a user to select a multimedia session with one or more users. After setting the meeting, the plug in module may transfer the information about the multimedia session of the meeting to the client agent, for example, by storing a file concerning the multimedia session to a shared location. The client agent **205** is programmable to cyclically read the shared location every few minutes, for example. If the client agent **205** finds new information in the shared location, it checks whether the multimedia session is to be established now. If so, the client agent **205** creates a requesting list based on the list of names in the stored file. The requesting list is then sent to the server **110a-c** (FIG. **1**) as disclosed below with respect to FIGS. **7a** and **7b** (see, e.g., steps **732** and step **740**). If the multimedia session is scheduled for the future, the information may be stored in a reservation queue to be retrieved and processed at the appropriate time.

[0046] An exemplary embodiment of an IP sever **110** is shown in FIG. **3**. The exemplary IP server **110** preferably comprises two main modules: an IP server module (IPSM) **303** and managing module MM **307**. The IPSM **303** preferably comprises different IP server applications **310** and communication modules **230**. An exemplary IP server application **310** can comprise the Polycom WebOffice server discussed earlier. The disclosed methods may be embodied in other types of IP servers **110** such a Microsoft IIS. Moreover, the IP server **110** may be resident at the premises of a multimedia service provider premises and dedicated solely for use with multimedia conferences. In such an exemplary embodiment, IP server **110** may not require the IPSM **303**.

[0047] MM **307** preferably comprises an MCU management Module (MCUM) **330**; a database management module (DBMM) **340**; one or more user databases (UDB) **350a-c**; and one or more client interface modules (CIM) **360a-c** for each served client.

[0048] The MCUM **330** manages a database of connection parameters and available resources for one or more MCUs **140a-c** associated with the IP server **110**. The connection parameters may be the type of supported networks (ISDN, PSTN, IP etc.), bit rates, IP addresses or dialing number, communication standards (H.320; H.324; SIP; H.323 etc.), etc.

[0049] MCUM **330** preferably receive a list of users with a request to connect them in a multimedia session. The list

may be sent from the client agent **205** in the PC of the moderator who requested the multimedia session. MCUM **330** may request DBMM **340** to retrieve the information of those users from the appropriate UDB **350a-c**. Then MCUM **330** may decide whether the request is for a point-to-point session, a gateway session, or a multipoint session. The decision is based on the connection parameters of the users and the number of the users that are in the list.

[**0050**] If a multipoint session is necessary, MCUM **330** selects an appropriate MCU **140a-c** and sends the parameters of the conference to that MCU, including the list of the users the MCU must call and their connection parameters. In parallel, MCUM **330** may transfer to the appropriate CIM **360a-c** the parameters of the selected MCU **140a-c** as well as the list of the users that have to dial in to the MCU to join the conference. CIM **360a-c** may send this information to the client agent **205** in the user's PC and to instruct the client agent to call the MCU.

[**0051**] If the session is point-to-point session or a gateway session, MCUM **330** sends (via the appropriate CIM **360a-c**) to the client agent **205** at the moderator's PC the connection parameters of the other user or gateway being contacted. The MCUM **330** then preferably requests the client agent **205** to instruct the endpoint of the moderator to call the endpoint of the other user or the gateway. More information concerning the operation of MCUM **330** is discussed below in conjunction with **FIGS. 5, 6 and 7**.

[**0052**] UDB **350a-c** preferably comprises a database containing information about the users that may be served by IP server **110**. UDB **350a-c** may be divided into groups, which each group being associated with a particular corporation for example. Each group may be further subdivided into corporate subgroups, etc., and/or the UDB **350a-c** may contain private sections for individual users. Access to each group, subgroup or private section may be limited to authorized users. Each entry in UDB **350a-c** preferably contains, among other parameters, the name of a buddy; the type of the buddy's endpoint **156/166**; the current status and connection parameters of those endpoints; etc. UDB **350a-c** is preferably managed by DBMM **340**. UDB **350a-c** may import information from other databases. For example, the database group for a corporation may comprise the user list provided by the corporation's Microsoft Outlook application listing its various employees.

[**0053**] From time to time, DBMM **340** preferably request an update of the status of the users' endpoint **156/166**. The request may be sent via CIM **360** to the appropriate client agent **205** at the user's PC **153/163**. Upon receiving their responses, DBMM **340** may update their entries in UDB **350a-c**. In alternate embodiment, as illustrated in **FIG. 6**, DBMM **340** may be passive and wait until receiving a status update from a user. Then DBMM **340** may update the entry of that user in the user's database **350a-c**.

[**0054**] DBMM **340** may receive a request to send a list of user's names from a certain group, sub-group or private section, of UDB **350a-c**. After verifying the authorization of the request, DBMM **340** send the requested list via CIM **360a-c** to the appropriate client agent **205**. DBMM **340** may also receive requests from MCUM **330** to provide connection information for certain sets of users, to which the DBMM **340** responds by retrieving the appropriate infor-

mation from UDB **350a-c**. More information on the operation of MM **307** is discussed below with respect to **FIGS. 5, 6 and 7**.

[**0055**] In alternate embodiments, in which segments of the client agent **205** resides at the IP server **110a-c**, MM **307** may comprise one or more DMMS **240** and/or CMs **260** to directly communicate with and control one or more endpoints **156/166** over an IP network or other suitable connection.

[**0056**] Following is a detailed description of a few exemplary methods that may be performed using the foregoing hardware and concepts. **FIG. 4** illustrates a flowchart of an exemplary status collection task **400** that may be used by an exemplary client agent **205** to determine the status of a particular endpoint **156/166**. Task **400** may start (**410**) when a PC **153/163** at and endpoint **156/166** is powered on, and preferably runs in the background without interfering with the user. Upon initiation **410**, a status register and a new status register are set to zero (**411**). A counter 'N' is also set to zero (**413**) and a request is sent **416** via connection **154/164** to endpoints **156/166** (**416**). An exemplary request may be accomplished via any interface provided by the endpoints **156/166**, such as Polycom's ViewStation product, and may be formatted in a TCP/IP protocol, although other communication links and protocols may be used such as those mentioned earlier.

[**0057**] After waiting for an appropriate period T1 for a response (**419**), for example from a few seconds to a few minutes, a decision is made whether a response from the endpoint has been received (**420**). If not, counter 'N' is increased **426** by one and a decision is made whether 'N' is two or not (**430**), although other exemplary embodiment may use a value different than two. If not, method **400** may return to step **416** and requests the status again. However, if N=2, then the client agent **205** assumes that the endpoint is off (**432**) and may set the new status register to indicate an "off" status before proceeding to step **460**.

[**0058**] Returning to step **420**, if a status from the endpoint **156/166** is received, a decision is made whether the status is busy (**440**). If so, then counter 'N' is increased by one (**442**) and a decision is made whether 'N' is two or not (**450**), where again two is merely an exemplary value. If not, method **400** may return to step **416** and requests the status again. If N=2, then the "new status" register may be set to "busy" (**452**) before proceeding to step **460**.

[**0059**] If the received status **440** is not a "busy" status, then the client agent **205** preferably collects the connection parameters of the endpoint **156/166** (**444**) and sets the "new status" register to "ready" (**446**).

[**0060**] In step **460**, a decision is made whether "new status" and "status" are the same. If so, then method **400** preferably returns to step **413** to start the process again. If they are not the same, the "new status" register is copied to the "status" register, which is in turn sent to MM **307** (**462**) and method **400** may return to step **413**. Also, although not depicted, if the status is "ready," the connection parameters are also sent to MM **307** and method **400** may return to step **413**. In an alternate exemplary embodiment also not depicted, if the status is "Off," a message may be sent to the user indicating that fact and recommending the user to turn it on. The status collection loop **400** may continue as long as PC **153/163** is on.

[0061] In another exemplary embodiment an endpoint **156/166** may automatically report its status upon change. In this case, method **400** would be modified accordingly.

[0062] **FIG. 5** illustrates a flowchart of an exemplary MCU update task **500** that may be used by an exemplary MCUM **330** in Managing Module (MM) **307** to determine available resources and connection parameters for MCUs **140a-c**. Task **500** may start upon power on of IP Server **110a-c** (**510**) and it may run in the background without interfering with the common operation of the server. Upon initiation, a counter 'K' and a counter 'm' are set to zero (**513**) and a request is sent via connection **124** (**FIG. 1**) to a first MCU (i.e., MCU<sub>m</sub>) within the group of MCUs **140a-c** (**516**). An exemplary request may be accomplished by querying MCU<sub>m</sub> via its interfaces as disclosed earlier. For example, a Polycom MGC MCU may be queried using XML API over TCP/IP.

[0063] Thereafter, the system waits for an appropriate period (T2), again from a few seconds to a few minutes, for the MCU<sub>m</sub> to respond concerning its availability and connection parameters (**519**). Such response by the MCU<sub>m</sub> can include reporting the number of free audio ports, video ports, data ports, free bridges, etc., and connection parameters such as the MCU's IP addresses, ISDN dialing numbers, etc.

[0064] After the period T2, a decision is made whether a response from MCU<sub>m</sub> has been received (**520**). If not, counter 'K' is increased by one (**526**) and a decision is made whether 'K' is two (an exemplary value) or not (**530**). If not, method **500** may return to step **516** and request the parameters again. If K=2, then an assumption is made **532** that the MCU<sub>m</sub> is off (**532**), at which point MCUM **330** updates MCU<sub>m</sub>'s status as necessary before proceeding to step **534**.

[0065] In an alternate embodiment not depicted in **FIG. 5**, before updating MCU<sub>m</sub>'s status, MCUM **330** may check whether MCU<sub>m</sub> had controlled one or more multimedia sessions before this update. If so, MCUM **330** may start a task to find a substitute one or more MCUs **140a-c** and to transfer the current or future sessions to the substitute MCU(s). The task of finding a substitute MCU may repeat a task of establishing a multimedia session for each one of the sessions that were controlled by MCU<sub>m</sub>. The task of establishing a multimedia session is discussed in detail below with respect to **FIG. 7**. Such additional functionality improves the reliability and scalability of the multimedia communication system **100**.

[0066] Returning now to step **520**, if a response from the MCU<sub>m</sub> is received, then the MCUM **330** updates its information concerning available resources and connection parameters (**522**) for MCU<sub>m</sub>, sets counter 'N' to zero, and increases counter 'm' by one (**534**) to indicate the next MCU in the group of MCUs **140a-c**.

[0067] At step **560**, a decision is made whether 'm' is equal to 'M', wherein 'M' is the number of MCUs in the group of MCUs **140a-c**. The value of 'M' may be loaded to IP server **110** when it is established, and can be configured or changed from time to time as MCUs **140** are added or taken out of the system. If m=M, then method **500** preferably returns to step **513** to start monitoring the MCUs once again. If 'm' is not equal to 'M', then method **500** preferably returns to step **516** to process the next MCU (i.e., MCU<sub>m+1</sub>) in the group.

[0068] In an alternative embodiment, a given MCU<sub>m</sub> may be configured to search for the IP server **110** and then to automatically send its resources and connection parameters when the MCU<sub>m</sub> is powered on.

[0069] Reference is now made to **FIG. 6**, which illustrates a flowchart of an exemplary user database update task **600** that may be used by an exemplary DBMM **340** in Managing Module (MM) **307** (**FIG. 3**). Task **600** preferably starts upon power on of IP Server **10a-c** (**610**) and preferably runs in the background without interfering with the common operation of the IP server. After a waiting period of T3, which again might range from a few seconds to a few minutes (**615**), a decision is made whether a status update has been received from one or more client agents **205** (**620**). If not, method **600** may return to step **615** and wait again. If a status update has been received, DBMM **340** may update the status accordingly (**622**). The DBMM **340** may then return to step **615** to continue waiting for further user status updates.

[0070] Reference is now made to **FIGS. 7a** and **7b**, which illustrate flowcharts of an exemplary method **700** that may be used to establishing a multimedia session. The operation of method **700** may be distributed among several units of system **100** as noted earlier.

[0071] A user who wishes to establish a multimedia session (i.e., the moderator) requests display of the user's buddy list (**715**). In response, the moderator's buddy list is displayed and the system waits for an instruction from the moderator (**718**). Several types of instructions may be used. For example, the moderator may select a buddy from the list (**726**), and the selected buddy is then added to a requesting list (**728**), and as such, the requesting list may include the users that are requested by the moderator to be part of the session.

[0072] If the instruction is a request to add users to the moderator's buddy list (**720**), then the client agent **205** may request the IP server **110a-c** to send an appropriate user list from the user's database **350a-c** (**722**). The appropriate user's list may be defined by the moderator or may be automatically selected depending on the moderator's characteristic. The requested user's list is thereafter displayed and the moderator may then select and add one or more users to his buddy list (**724**).

[0073] If the instruction is to establish the session **730** with the users previously selected for inclusion on the requesting list (**728**), then the requesting list is sent to the IP server **110a-c** via IP connection **125/126** (**732**), at which point, control over the multimedia session is transferred to the IP server, as discussed further with respect to **FIG. 7b**.

[0074] Upon receiving **740** the requesting list and the request to establish a multimedia session, the MM **307** at the appropriate IP server begins the process of establishing the multimedia session. Thus, at step **742**, the MM **307** retrieves, from the appropriate user's database **350a-c**, the connection parameters for the users that are include in the requesting list, as discussed earlier with respect to **FIG. 4**. Based on the retrieved connection parameters, the type of the multimedia session is defined, for example: whether the required session is point-to-point or multipoint in nature; whether the session is audio or multimedia in nature; whether layouts are required in a video session; whether transcoding is required because differing communication protocols or compression schemes are used at the endpoints; etc.

[0075] In case of a point-to-point session, an MCU may not be needed. In such a case, the MM307 preferably sends the dialing number and/or the IP address of the moderator's endpoint to the client agent of the called user's endpoint (762), thereby instructing the called user's client agent to call the moderator's endpoint.

[0076] Based on the session definition, and assuming the resources of an MCU 140a-c are required, a decision is made regarding the resources that are needed (744), such as the number of audio ports, number of video ports, type and number of network interface cards, etc. Based on the needed resources and the MCUs database that is managed by MCUM 330 as determined with respect to FIG. 5, one of the MCUs 140a-c is selected to handle the session. In some cases, more than one MCU may be selected to handle the session, in which case the selected MCUs may operate in a cascading fashion. In case that there are no free resources to carry the session, a message is preferably sent to the moderator informing him that the request for multimedia session is denied.

[0077] The selection of the appropriate one or more MCUs may be based on different criteria, such as but not limited to available resources, cost parameters such as the distance of the MCUs from the users, network topology, etc. In any event, selection of the MCU(s) is accompanied by reset of a counter 's' to zero, which counter count the number of MCU selection retries.

[0078] After selecting the appropriate one or more MCUs, MM 307 may divide the users of the requesting list into two groups (750): a group of users whose endpoints are "off", for example, because the user is away or unavailable; and a group of users whose endpoints are "on" and accordingly are available.

[0079] Each group may be handled by separate tasks executed in parallel. The "off" group task starts at step 770, in which case an instant message is sent to each user to inform them of their off status and the fact that they are being requested to join the conference. Such a message is preferably sent via the client agent 205 that is installed in the user's PC 153/163. An exemplary instant message may inform the user that the moderator invites him to a multimedia session and requests the user to turn on his endpoint. Thereafter, the counter 's' is increased by one and the task may wait for a period T3 (770), possibly a few minutes or so. After time period T3, a decision is made whether 's' is three (772), although as before this number is merely exemplary. If not, method 700 preferably returns to step 750. During this cycle, only users that were in the "off" in the previous cycle are handled. If 's' is three 772, then a message is sent 776 to the moderator informing him that the appropriate user is unavailable and can not be connected to the session. Then the task is terminated 780.

[0080] The group of the users whose endpoints are "on" is handled by a task that starts at step 760. In step 760, the connection parameters of each "on" endpoint is checked to divide the group into two subgroups: a "dial out" group and a "dial in" group. As mentioned earlier, a "dial out" user is a user whose endpoint cannot be externally instructed to initiate a call, for example, a regular telephone, and accordingly the MCU must bear the burden of contacting such users. By contrast, a "dial in" user is a user whose endpoint has the capability to be externally controlled to initiate a call, for example, Polycom ViewStation.

[0081] The list of the "dial out" subgroup is sent to the selected MCU, along with a request to the MCU to call those users to add them to the session (764). Preferably in parallel, the "dial in" number, IP address, and/or URL of the selected MCU, along with a password if needed, are sent via the appropriate CIM 360a-c to the client agents 205 (762) for the "dial in" users, requesting the client agents to instruct the associated endpoints to "dial in" the number or address to set the session. In addition, the client agent may send a message to its user with the password of the session.

[0082] Other exemplary embodiments may add additional functionalities to the system. For example, an alternate embodiment of the present invention may give the moderator an option to add a new participant during an existing session. Such an embodiment may use a similar method to the example that is disclosed above with respect to FIGS. 7a and 7b with new starting conditions and some modifications. For example, the selection of an MCU (744) would start by checking if the MCU that is controlling the current session has enough resources and capabilities for the new participant(s). If so, the current MCU remains and the current conference is not disturbed. Step 750 may then be modified to handle only the additional participants. If the current session is a point-to-point, then adding a participant would require an MCU, which change can be made automatically, after checking for necessary resources, etc.

[0083] If the current MCU cannot support an additional participant, a message may be sent to the current participants informing them that their session is temporary terminated and it will be transferred to another MCU. Then method 700 may continue from step 744 with a broader-requesting requesting list that includes the additional participants.

[0084] Other embodiments of the present invention may give the moderator an option to remove any of the participants, etc.

[0085] Other exemplary embodiment of the present invention may add additional tasks to increase the probability of establishing the requested multimedia session. For example, a retrial task may be initiated by the MM 307 after a certain period of time, for example a few minutes, after the termination of task 700. The retrial task may request from the selected MCU a list of the conferees in the relevant multimedia session. This list is compared with the requesting list and a new list of missing user is created, i.e., those users in the requesting list but not in the current conferees list. Thereafter, the retrial task at step 740 with new starting conditions, and wherein the requesting list constitutes the missing list. The connection parameters of the missing users may be set to be different than the connection parameters that were used in the previous cycle. For example, if during the first time the endpoint of a missing user was defined as an IP-based endpoint, then during the current try the endpoint may be defined as an ISDN-based endpoint. This assumes that the missing endpoint may be connected over two or more networks using different communication protocols, for example, over an IP network using H.323 protocol and over ISDN network using H.320 protocol.

[0086] In further alternate embodiments, rather than informing the moderator that a particular user cannot participate in the session (776), the moderator may be transferred to a multimedia answering system (MAS). The MAS can be a storage device that is associated with the IP server

110a-c, or may constitute a separate server connected over the network. Each user of the system may have a "mailbox" in the MAS as well as a welcome message informing a caller to leave a message, which can be a vocal message, a video message, a text message, or a combination of these. In such an embodiment, the buddy list resident on the moderator's endpoint can include a field to indicate the address of the section in the MAS for each of the buddies, including those users which can't presently participate. Transferring the moderator to the unavailable user's mailbox in the MAS can be accomplished for a point-to-point session by informing the moderator's endpoint to call the relevant MAS address in a manner similar to the "dial in" step 762 discussed above. In the case of a multipoint session, the MCU may be informed to call the MAS and to connect it to the moderator in a manner similar to the "dial out" step 764 discussed above. At the end of recording the moderator's message, the MAS may send an indication to the unavailable user that a multimedia message is received and stored in the MAS, which may be sent via SMS, instant message, e-mail, or which may be sent to the endpoint. If received with sufficient time, the unavailable user can perhaps join the conference at a later time.

[0087] It should be appreciated from the foregoing that the disclosed systems and methods reduce the complication of establishing a multimedia session and reduces the barriers that prevent users from enjoying the advantages of multimedia conferencing. The disclosed systems and methods additionally increase the probability for successfully establishing an impromptu multimedia session.

[0088] The present invention has been described using detailed descriptions of embodiments thereof that are provided by way of example and which are not intended to limit the scope of the invention. Moreover, not all features of the described embodiments are required in all embodiments of the invention, as some embodiments may only utilize some of the disclosed features or possible combinations of the features. Additionally, variations of the disclosed embodiments and differing combinations of the disclosed features and other features will occur to persons of the art. The scope of the invention is limited only by the following claims.

What is claimed is:

1. A multimedia communication system, comprising:
  - a server adapted to communicate with two or more multimedia endpoints,
  - wherein the server contains a module for instructing the multimedia endpoints to call a dial number to establish a multimedia session in response to a requested list of multimedia endpoints received from one of the multimedia endpoints.
2. The system of claim 1, further comprising an MCU adapted to communicate with the at least one server and the two or more multimedia endpoints.
3. The system of claim 2, wherein the dial number is associated with the MCU.
4. The system of claim 3, wherein the module further instructs the MCU to call a dial number of at least one of the endpoints included in the requested list of endpoints.
5. The system of claim 3, wherein the server is configured to transfer the multimedia session from the MCU to another MCU in the event of a failure.

6. The system of claim 2, wherein the server is integrated with the MCU.

7. The system of claim 2, further comprising at least one network for carrying the communication between the server and the endpoints, and for carrying multimedia communications between the endpoints and the MCU and the endpoints.

8. The system of claim 1, wherein the server is an IP server.

9. The system of claim 1, wherein the endpoints each are associated with a computer, and wherein the server communicates with the endpoints via their associated computer.

10. The system of claim 9, wherein the associated computer is integrated with at least one multimedia endpoint.

11. The system of claim 1, further comprising at least one network for carrying the communication between the server and the endpoints.

12. The system of claim 11, wherein the at least one network comprises an IP network.

13. The system of claim 1, wherein the dial number comprises a network address.

14. The system of claim 1, wherein the module is configured to reestablish the session if not successfully established initially.

15. The system of claim 1, wherein the module is configured to reestablish the session using different connection parameters if not successfully established initially.

16. The system of claim 1, wherein the server is integrated with at least one of the endpoints.

17. The system of claim 1, wherein the server comprises at least one buddy list, wherein each buddy in the list is associated with at least one endpoint, and wherein the requested list is generated via access to the buddy list.

18. The system of claim 17, wherein the buddy list comprises information concerning the status of the multimedia endpoints for each buddy in the list or the availability of the buddy.

19. The system of claim 1, wherein the requested list is initiated from a scheduling application.

20. The system of claim 1, wherein the requested list is initiated from a hosting application.

21. A method for establishing a multimedia session, comprising:

- receiving at a server from a first endpoint a requested list of second one or more endpoints desired to participate in the multimedia session;

- determining at the server whether the requested multimedia session requires an MCU and the status of the second one or more endpoints;

- if an MCU is required and if the status of a particular second one or more endpoint is an available status, instructing at least some of those second endpoints to call a dial number for a MCU to participate in the multimedia session.

22. The method of claim 21, wherein the server is an IP server.

23. The method of claim 21, wherein the endpoints each are associated with a computer, and wherein the server communicates with the endpoints via their associated computer.

24. The method of claim 21, wherein the server is integrated with at least one computer.

**25.** The method of claim 21, further comprising at least one network for carrying the communication between the server and the endpoints, and for carrying multimedia communications between the MCU and the endpoints.

**26.** The method of claim 25, wherein the at least one network comprises an IP network.

**27.** The method of claim 21, wherein the dial number comprises a network address.

**28.** The method of claim 21, wherein the server is integrated with at least one of the endpoints.

**29.** The method of claim 21, wherein the server is integrated with the MCU.

**30.** The method of claim 21, wherein the server comprises at least one buddy list, wherein each buddy in the list is associated with a second endpoint, and wherein the requested list is generated via access to the buddy list.

**31.** The method of claim 30, wherein the buddy list comprises information concerning the status of the multimedia endpoints for each buddy in the list.

**32.** The method of claim 21, further comprising having the MCU call a dial number for at least some of the available first or second endpoints.

**33.** The method of claim 21, wherein the requested list is initiated from a scheduling application.

**34.** The method of claim 21, wherein the requested list is initiated from a hosting application.

**35.** The method of claim 21, further comprising determining whether the multimedia session is successfully established, and if not, reestablishing the session using alternate connection parameters.

**36.** The method of claim 21, further comprising checking the status of the multimedia session, and if the session is disconnected, reestablishing the session.

**37.** A method for establishing a multimedia session, comprising:

receiving at a server from a first endpoint a requested list of second one or more endpoints desired to participate in the multimedia session;

determining at the server whether the requested multimedia session requires an MCU and the status of the second one or more endpoints;

if an MCU is not required and if the status of a particular second endpoint from the one or more endpoint is an available status, instructing the first endpoint or the particular second endpoint to call a dial number for the other endpoint to participate in the multimedia session.

**38.** The method of claim 37, wherein the server is an IP server.

**39.** The method of claim 37, wherein the endpoints each are associated with a computer, and wherein the server communicates with the endpoints via their associated computer.

**40.** The method of claim 37, wherein the server is integrated with at least one computer.

**41.** The method of claim 37, further comprising at least one network for carrying the communication between the server and the endpoints, or for carrying multimedia communications between the MCU and the endpoints.

**42.** The method of claim 41, wherein the at least one network comprises an IP network.

**43.** The method of claim 37, wherein the dial number comprises a network address.

**44.** The method of claim 37, wherein the server is integrated with at least one of the endpoints.

**45.** The method of claim 37, wherein the server is integrated with the MCU.

**46.** The method of claim 37, wherein the server comprises at least one buddy list, wherein each buddy in the list is associated with a second endpoint, and wherein the requested list is generated via access to the buddy list.

**47.** The method of claim 46, wherein the buddy list comprises information concerning the status of the multimedia endpoints for each buddy in the list.

**48.** The method of claim 37, wherein the requested list is initiated from a scheduling application.

**49.** The method of claim 37, wherein the requested list is initiated from a hosting application.

**50.** The method of claim 37, further comprising determining whether the multimedia session is successfully established, and if not, reestablishing the session using alternate connection parameters.

**51.** The method of claim 37, further comprising checking the status of the multimedia session, and if the session is disconnected, reestablishing the session.

**52.** A method for establishing a multimedia conference, comprising:

receiving at a server from a first endpoint a requested list of second one or more endpoints desired to participate in the multimedia session;

determining at the server whether an MCU is required;

if an MCU is required, assigning an MCU to host the session; and

if an MCU is not required, having the server provide the first endpoint and or a particular second endpoint with a dial number of the other endpoint to establish the multimedia session.

**53.** The method of claim 52, further comprising, if an MCU is required, assigning an MCU to host the session by having the server provide the first endpoint and or the second one or more endpoints with a dial number of the MCU to host the session.

**54.** The method of claim 52, wherein determining whether an MCU is required is based on at least one parameter selected from the group of consisting of type of one or more endpoints, capabilities of one or more endpoints, number of endpoints in the session, network load, network topology, MCU availabilities, and user preference.

**55.** The method of claim 52, wherein the server is an IP server.

**56.** The method of claim 52, wherein the endpoints each are associated with a computer, and wherein the server communicates with the endpoints via their associated computer.

**57.** The method of claim 52, wherein the server is integrated with at least one computer.

**58.** The method of claim 52, further comprising at least one network for carrying the communication between the server and the endpoints, and for carrying multimedia communications between the MCU and the endpoints.

**59.** The method of claim 58, wherein the at least one network comprises an IP network.

**60.** The method of claim 52, wherein the MCU hosts the conference by providing a dial number for the MCU to the second endpoints.

61. The method of claim 60, wherein the dial number for the MCU is provided in response to an instruction from the server.

62. The method of claim 60, wherein the dial number for the MCU comprises a network address.

63. The method of claim 52, wherein the server is integrated with at least one of the endpoints.

64. The method of claim 52, wherein the server is integrated with the MCU.

65. The method of claim 52, wherein the server comprises at least one buddy list, wherein each buddy in the list is associated with a second endpoint, and wherein the requested list is generated via access to the buddy list.

66. The method of claim 65, wherein the buddy list comprises information concerning the status of the multimedia endpoints for each buddy in the list.

67. The method of claim 52, wherein the requested list is initiated from a scheduling application.

68. The method of claim 52, wherein the requested list is initiated from a hosting application.

69. The method of claim 52, wherein at least one of the second endpoints comprises a gateway.

70. A method for leaving a message for a user in a multimedia session environment, comprising:

receiving at a server from a first endpoint a requested list of at least one second endpoint desired to participate in the multimedia session;

determining the status of the at least one second endpoint at the server;

if the status of the at least one second endpoint is such that the at least one second endpoint is unavailable to participate in the multimedia session, receiving a message from a user at the first endpoint; and

transmitting from the server the message to the at least one second endpoint.

71. The method of claim 70, wherein the message is transmitted to the at least one second endpoint upon receiving a request from the at least one second endpoint.

72. The method of claim 70, wherein the server is an IP server.

73. The method of claim 70, wherein the endpoints each are associated with a computer, and wherein the server communicates with the endpoints via their associated computer.

74. The method of claim 70, wherein the server is integrated with at least one computer.

75. The method of claim 70, further comprising at least one network for carrying the communication between the server and the endpoints.

76. The method of claim 75, wherein the at least one network comprises an IP network.

77. The method of claim 70, wherein the server is integrated with at least one of the endpoints.

78. The method of claim 70, wherein the server comprises at least one buddy list, wherein each buddy in the list is associated with a second endpoint, and wherein the requested list is generated via access to the buddy list.

79. The method of claim 78, wherein the buddy list comprises information concerning the status of the second endpoints for each buddy in the list.

80. The method of claim 70, wherein receiving a message from a user at the first endpoint further comprises first sending from the server a message to the first endpoint that at least one second endpoint is unavailable, and permitting the user at the first endpoint to compose the message.

81. The method of claim 70, wherein determining the status of the at least one second endpoint at the server occurs continuously.

82. The method of claim 70, wherein determining the status of the at least one second endpoint at the server comprises determining whether the at least one second endpoint is on.

83. The method of claim 70, wherein determining the status of the at least one second endpoint at the server comprises checking a database at the server.

\* \* \* \* \*