

EX 1001



US008397282B2

(12) **United States Patent**
Turley et al.

(10) **Patent No.:** **US 8,397,282 B2**
(45) **Date of Patent:** ***Mar. 12, 2013**

(54) **DYNAMICALLY ADAPTIVE NETWORK FIREWALLS AND METHOD, SYSTEM AND COMPUTER PROGRAM PRODUCT IMPLEMENTING SAME**

5,748,901 A	5/1998	Afek et al.
5,835,727 A	11/1998	Wong et al.
5,878,231 A	3/1999	Baehr et al.
5,896,499 A	4/1999	McKelvey
5,901,148 A	5/1999	Bowen et al.
5,936,542 A	8/1999	Kleinrock et al.
5,953,506 A	9/1999	Kalra et al.
5,987,134 A	11/1999	Shin et al.
5,996,013 A	11/1999	Delp et al.
6,085,241 A	7/2000	Otis
6,088,451 A	7/2000	He et al.

(75) Inventors: **Patrick Turley**, Austin, TX (US); **Eric White**, Austin, TX (US)

(73) Assignee: **RPX Corporation**, San Francisco, CA (US)

(*) Notice: Subject to any disclaimer, the term of this patent is extended or adjusted under 35 U.S.C. 154(b) by 0 days.

This patent is subject to a terminal disclaimer.

(Continued)

FOREIGN PATENT DOCUMENTS

EP	0 587 522 A2	3/1994
WO	WO 01/77787 A3	10/2001

(Continued)

(21) Appl. No.: **13/092,488**

(22) Filed: **Apr. 22, 2011**

(65) **Prior Publication Data**

US 2011/0219444 A1 Sep. 8, 2011

Related U.S. Application Data

(63) Continuation of application No. 12/579,566, filed on Oct. 15, 2009, now Pat. No. 8,032,933, which is a continuation of application No. 11/076,719, filed on Mar. 10, 2005, now Pat. No. 7,610,621.

(60) Provisional application No. 60/551,698, filed on Mar. 10, 2004.

(51) **Int. Cl.**
H04L 29/00 (2006.01)

(52) **U.S. Cl.** **726/11**

(58) **Field of Classification Search** None
See application file for complete search history.

(56) **References Cited**

U.S. PATENT DOCUMENTS

5,623,601 A	4/1997	Vu
5,673,393 A	9/1997	Marshall et al.
5,706,427 A	1/1998	Tabuki

Notice of Allowance issued for U.S. Appl. No. 12/753,390, mailed Mar. 16, 2012, 9 pages.

(Continued)

OTHER PUBLICATIONS

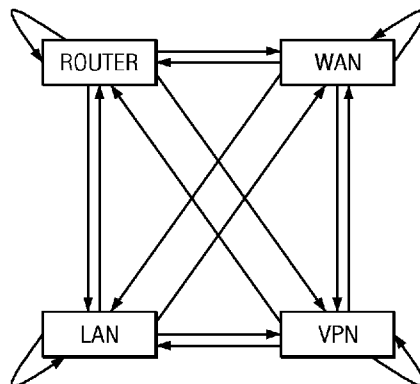
Primary Examiner — Minh Dinh

(74) *Attorney, Agent, or Firm* — Howison & Arnott, L.L.P.

(57) **ABSTRACT**

A system, method, and computer program product for controlling data through a firewall which may be dynamically configurable. The method may comprise defining at least one node, wherein the at least one node is associated with two or more network interfaces; associating a set of firewall rules with the at least one node; receiving a packet at a first node of the at least one node; and accepting or denying the packet based on the set of firewall rules. The firewall rules include dynamic chains of rules having defined places where firewall rules may be dynamically inserted into or deleted from the firewall while the firewall is operating on one or more machines connected to network segments where the nodes reside.

35 Claims, 3 Drawing Sheets



U.S. PATENT DOCUMENTS								
6,092,200	A	7/2000	Muniyappa et al.	7,316,029	B1	1/2008	Parker et al.	
6,108,782	A	8/2000	Fletcher et al.	7,324,551	B1	1/2008	Stammers	
6,130,892	A	10/2000	Short et al.	7,324,947	B2	1/2008	Jordan et al.	
6,131,116	A	10/2000	Riggins et al.	7,325,042	B1	1/2008	Soscia et al.	
6,157,953	A	12/2000	Chang et al.	7,386,888	B2	6/2008	Liang et al.	
6,173,331	B1	1/2001	Shimonishi	7,406,530	B2	7/2008	Brown et al.	
6,176,883	B1	1/2001	Holloway et al.	7,418,504	B2	8/2008	Larson et al.	
6,185,567	B1	2/2001	Ratnaraj et al.	7,420,956	B2	9/2008	Karaoguz et al.	
6,194,992	B1	2/2001	Short et al.	7,444,669	B1	10/2008	Bahl et al.	
6,199,113	B1	3/2001	Alegre et al.	7,448,075	B2	11/2008	Morand et al.	
6,205,552	B1	3/2001	Fudge	7,454,792	B2	11/2008	Cantrell et al.	
6,212,558	B1	4/2001	Antur et al.	7,490,151	B2	2/2009	Munger et al.	
6,219,706	B1	4/2001	Fan et al.	7,509,625	B2	3/2009	Johnston et al.	
6,226,752	B1	5/2001	Gupta et al.	7,540,025	B2*	5/2009	Tzadikario	726/22
6,233,607	B1	5/2001	Taylor et al.	7,587,512	B2	9/2009	Ta et al.	
6,243,815	B1	6/2001	Antur et al.	7,590,728	B2	9/2009	Tonnesen et al.	
6,266,774	B1	7/2001	Sampath et al.	7,610,621	B2	10/2009	Turley et al.	
6,275,693	B1	8/2001	Lin et al.	7,624,438	B2	11/2009	White	
6,295,294	B1	9/2001	Odlyzko	7,634,805	B2*	12/2009	Aroya	726/13
6,321,339	B1	11/2001	French et al.	7,665,130	B2	2/2010	Johnston et al.	
6,324,648	B1	11/2001	Grantges, Jr.	7,836,496	B2*	11/2010	Chesla et al.	726/13
6,336,133	B1	1/2002	Morris et al.	8,032,933	B2	10/2011	Turley et al.	
6,404,743	B1	6/2002	Meandzija	8,108,915	B2	1/2012	White et al.	
6,421,319	B1	7/2002	Iwasaki	8,117,639	B2	2/2012	MacKinnon et al.	
6,463,474	B1	10/2002	Fuh et al.	8,224,983	B2	7/2012	Ta et al.	
6,473,793	B1	10/2002	Dillon et al.	2001/0038639	A1	11/2001	McKinnon et al.	
6,473,801	B1	10/2002	Basel	2001/0038640	A1	11/2001	McKinnon et al.	
6,477,143	B1	11/2002	Ginossar	2001/0038645	A1	11/2001	McKinnon et al.	
6,502,131	B1	12/2002	Vaid et al.	2001/0039576	A1	11/2001	Kanada	
6,502,135	B1	12/2002	Munger et al.	2001/0039582	A1	11/2001	McKinnon et al.	
6,516,417	B1	2/2003	Pegrum et al.	2002/0013844	A1	1/2002	Garrett et al.	
6,535,879	B1	3/2003	Behera	2002/0021665	A1	2/2002	Bhagavath et al.	
6,539,431	B1	3/2003	Sitaraman et al.	2002/0023160	A1	2/2002	Garrett et al.	
6,631,416	B2	10/2003	Bendinelli et al.	2002/0023210	A1	2/2002	Tuomenoksa et al.	
6,636,894	B1	10/2003	Short et al.	2002/0026503	A1	2/2002	Bendinelli et al.	
6,643,260	B1	11/2003	Kloth et al.	2002/0026531	A1	2/2002	Keane et al.	
6,678,733	B1	1/2004	Brown et al.	2002/0029260	A1	3/2002	Dobbins et al.	
6,708,212	B2	3/2004	Porras et al.	2002/0029276	A1	3/2002	Bendinelli et al.	
6,732,179	B1	5/2004	Brown et al.	2002/0035699	A1	3/2002	Crosbie	
6,735,691	B1	5/2004	Capps et al.	2002/0042883	A1	4/2002	Roux et al.	
6,757,740	B1	6/2004	Parekh et al.	2002/0046264	A1	4/2002	Dillon et al.	
6,763,468	B2	7/2004	Gupta et al.	2002/0052950	A1	5/2002	Pillai et al.	
6,785,252	B1	8/2004	Zimmerman et al.	2002/0053031	A1	5/2002	Bendinelli et al.	
6,789,110	B1	9/2004	Short et al.	2002/0055968	A1	5/2002	Wishoff et al.	
6,789,118	B1	9/2004	Rao	2002/0056008	A1	5/2002	Keane et al.	
6,798,746	B1	9/2004	Kloth et al.	2002/0059408	A1	5/2002	Pattabhiraman et al.	
6,804,783	B1	10/2004	Wesinger et al.	2002/0075844	A1	6/2002	Hagen	
6,816,903	B1	11/2004	Rakoshitz et al.	2002/0083175	A1*	6/2002	Afek et al.	709/225
6,823,385	B2	11/2004	McKinnon et al.	2002/0085719	A1	7/2002	Crosbie	
6,834,341	B1	12/2004	Bahl et al.	2002/0087713	A1	7/2002	Cunningham	
6,839,759	B2	1/2005	Larson et al.	2002/0090089	A1	7/2002	Branigan	
6,876,668	B1	4/2005	Chawla et al.	2002/0091859	A1	7/2002	Tuomenoksa et al.	
6,907,530	B2	6/2005	Wang	2002/0091944	A1	7/2002	Anderson et al.	
6,917,622	B2	7/2005	McKinnon et al.	2002/0099829	A1	7/2002	Richards et al.	
6,976,089	B2	12/2005	Na et al.	2002/0112183	A1	8/2002	Baird, III et al.	
6,996,625	B2	2/2006	Kaplan et al.	2002/0112186	A1	8/2002	Ford et al.	
7,013,331	B2	3/2006	Das	2002/0120741	A1	8/2002	Webb et al.	
7,085,385	B2	8/2006	Frantz et al.	2002/0123335	A1	9/2002	Luna et al.	
7,085,854	B2	8/2006	Keane et al.	2002/0124078	A1	9/2002	Conrad	
7,092,727	B1	8/2006	Li et al.	2002/0124103	A1	9/2002	Maruyama et al.	
7,120,934	B2	10/2006	Ishikawa	2002/0129143	A1	9/2002	McKinnon, III et al.	
7,143,283	B1	11/2006	Chen et al.	2002/0131404	A1	9/2002	Mehta et al.	
7,143,435	B1	11/2006	Droms et al.	2002/0133581	A1	9/2002	Schwartz et al.	
7,146,639	B2	12/2006	Bartal et al.	2002/0133586	A1	9/2002	Shanklin et al.	
7,181,017	B1	2/2007	Nagel et al.	2002/0133589	A1	9/2002	Gubbi et al.	
7,181,542	B2	2/2007	Tuomenoksa et al.	2002/0136226	A1	9/2002	Christoffel et al.	
7,181,766	B2	2/2007	Bendinelli et al.	2002/0138631	A1	9/2002	Friedel et al.	
7,185,073	B1	2/2007	Gai et al.	2002/0138762	A1	9/2002	Horne	
7,185,358	B1	2/2007	Schreiber et al.	2002/0138763	A1	9/2002	Delany et al.	
7,185,368	B2	2/2007	Copeland, III	2002/0143964	A1	10/2002	Guo et al.	
7,188,180	B2	3/2007	Larson et al.	2002/0152284	A1	10/2002	Cambray et al.	
7,194,554	B1	3/2007	Short et al.	2002/0162030	A1	10/2002	Brezak et al.	
7,216,173	B2	5/2007	Clayton et al.	2002/0164952	A1	11/2002	Singhal et al.	
7,257,833	B1	8/2007	Parekh et al.	2002/0165949	A1	11/2002	Na et al.	
7,266,754	B2	9/2007	Shah	2002/0165990	A1	11/2002	Singhal et al.	
7,272,646	B2	9/2007	Cooper et al.	2002/0169867	A1	11/2002	Mann et al.	
7,290,288	B2	10/2007	Gregg et al.	2002/0174227	A1	11/2002	Hartsell et al.	
7,310,613	B2	12/2007	Briel et al.	2002/0178282	A1	11/2002	Mysore et al.	
				2002/0199007	A1	12/2002	Clayton et al.	

2003/0041104 A1 2/2003 Wingard et al.
 2003/0043846 A1 3/2003 Purpura et al.
 2003/0046370 A1 3/2003 Courtney
 2003/0055994 A1 3/2003 Herrmann et al.
 2003/0059038 A1 3/2003 Meyerson et al.
 2003/0061506 A1 3/2003 Cooper
 2003/0069955 A1 4/2003 Gieseke et al.
 2003/0069956 A1 4/2003 Gieseke et al.
 2003/0070170 A1 4/2003 Lennon
 2003/0078784 A1 4/2003 Jordan et al.
 2003/0087629 A1 5/2003 Juitt et al.
 2003/0110073 A1 6/2003 Briel et al.
 2003/0115247 A1 6/2003 Simpson et al.
 2003/0123442 A1 7/2003 Drucker et al.
 2003/0126608 A1 7/2003 Safadi et al.
 2003/0135753 A1 7/2003 Batra et al.
 2003/0149751 A1 8/2003 Bellinger et al.
 2003/0154399 A1 8/2003 Zuk
 2003/0159072 A1 8/2003 Bellinger et al.
 2003/0163603 A1 8/2003 Fry et al.
 2003/0172167 A1 9/2003 Judge et al.
 2003/0177477 A1 9/2003 Fuchs
 2003/0182420 A1 9/2003 Jones et al.
 2003/0212800 A1 11/2003 Jones et al.
 2003/0212900 A1 11/2003 Liu et al.
 2003/0217126 A1 11/2003 Polcha et al.
 2004/0015719 A1 1/2004 Lee
 2004/0047356 A1 3/2004 Bauer
 2004/0049586 A1 3/2004 Ocepek et al.
 2004/0064351 A1 4/2004 Mikurak
 2004/0064560 A1 4/2004 Zhang et al.
 2004/0064836 A1 4/2004 Ludvig et al.
 2004/0073941 A1 4/2004 Ludvig et al.
 2004/0083295 A1 4/2004 Amara et al.
 2004/0085906 A1 5/2004 Ohtani
 2004/0093513 A1 5/2004 Cantrell
 2004/0103426 A1 5/2004 Ludvig et al.
 2004/0107290 A1 6/2004 Kaplan et al.
 2004/0122956 A1 6/2004 Myers et al.
 2004/0172557 A1 9/2004 Nakae et al.
 2004/0177276 A1 9/2004 MacKinnon et al.
 2004/0179822 A1 9/2004 Tsumagari et al.
 2004/0181816 A1 9/2004 Kim et al.
 2004/0199635 A1 10/2004 Ta et al.
 2004/0210633 A1 10/2004 Brown et al.
 2004/0215957 A1 10/2004 Moineau et al.
 2004/0236963 A1* 11/2004 Danford et al. 713/201
 2004/0268149 A1 12/2004 Aaron
 2004/0268234 A1 12/2004 Sampathkumar et al.
 2005/0021686 A1 1/2005 Jai et al.
 2005/0021975 A1 1/2005 Liu
 2005/0044350 A1 2/2005 White et al.
 2005/0044422 A1 2/2005 Cantrell
 2005/0066200 A1 3/2005 Bahl et al.
 2005/0091303 A1 4/2005 Suzuki
 2005/0138358 A1 6/2005 Bahl et al.
 2005/0138416 A1 6/2005 Qian et al.
 2005/0149721 A1 7/2005 Lu
 2005/0193103 A1 9/2005 Drabik
 2005/0195854 A1 9/2005 Agmon et al.
 2005/0204022 A1 9/2005 Johnston et al.
 2005/0204031 A1 9/2005 Johnston et al.
 2005/0204050 A1 9/2005 Turley
 2005/0204168 A1 9/2005 Johnston et al.
 2005/0204169 A1 9/2005 Tonnesen
 2005/0204402 A1 9/2005 Turley et al.
 2006/0036723 A1 2/2006 Yip et al.
 2006/0168229 A1 7/2006 Shim et al.
 2006/0168454 A1 7/2006 Venkatachary et al.
 2006/0173992 A1 8/2006 Weber et al.
 2006/0184618 A1 8/2006 Kurup et al.
 2007/0073718 A1 3/2007 Ramer et al.
 2007/0186113 A1 8/2007 Cuberson et al.
 2007/0208936 A1 9/2007 Ramos Robles
 2007/0268878 A1 11/2007 Clements
 2008/0066096 A1 3/2008 Wollmershauser et al.
 2008/0098464 A1 4/2008 Mizrah
 2008/0120661 A1 5/2008 Ludvig et al.
 2008/0147840 A1 6/2008 Roelens et al.

2008/0276305 A1 11/2008 Chan et al.
 2009/0279567 A1 11/2009 Ta et al.
 2010/0064356 A1 3/2010 Johnston et al.
 2010/0192213 A1 7/2010 Ta et al.
 2011/0258687 A1 10/2011 White et al.
 2012/0096517 A1 4/2012 White et al.
 2012/0117615 A1 5/2012 MacKinnon et al.

FOREIGN PATENT DOCUMENTS

WO WO 02/09458 A2 1/2002
 WO WO 02/23825 A1 3/2002
 WO WO 02/41587 A2 5/2002
 WO WO 02/077820 A1 10/2002
 WO WO 03/021890 A1 3/2003
 WO WO 03/098461 A1 11/2003
 WO WO 2004/034229 A2 4/2004
 WO WO 2004/036371 A2 4/2004
 WO WO 2005/020035 A2 3/2005

OTHER PUBLICATIONS

Office Action for U.S. Appl. No. 12/619,560, mailed May 9, 2012, 7 pgs.
 Bauer, Mick, Designing and Using DMZ Networks to Protect Internet Servers, Linux Journal, Mar. 1, 2001, 6 pgs. at <http://linuxjournal.com/article/4415>, printed Mar. 22, 2012.
 Notice of Allowance for U.S. Appl. No. 12/579,566, mailed Aug. 26, 2011, 9 pgs.
 Alshamsi, Abdelnasir, et al., "A Technical Comparison of IPSec and SSL," Tokyo University of Technology, Jul. 8, 2004, 10 pages.
 Fisher, Dennis, "NetScreen to Acquire Neoteris," IT Security & Network Security News, Oct. 6, 2003, 1 page.
 Demaria, Mike, "Faster Than a Speeding VPN—Super Remote Access With Neoteris IVE," Network Computing, Sep. 9, 2002, printed Nov. 9, 2011 from <http://www.networkcomputing.com/data-protection/2296249>, 3 pages.
 Snyder, Joel, "SSL VPN Gateways," Networkworld, Jan. 12, 2004, printed Nov. 9, 2011 from <http://www.networkworld.com/reviews/2004/0112revmain.html>, 10 pages.
 "NetExtender for SSL-VPN," SonicWALL SSL-VPN NetExtender, Apr. 27, 2006, 30 pages.
 "IPSec vs. SSL VPN: Transition Criteria and Methodology," 2007 Sonicwall, 13 pages.
 Fisher, Dennis, "Symantec Acquires SSL VPN Vendor," IT Security & Network Security News, Oct. 20, 2003, printed Nov. 9, 2011 from <http://www.eweek.com/index2.php?option=content&task=v...1> page.
 Notice of Allowance issued in U.S. Appl. No. 12/617,211, mailed Nov. 10, 2011, 8 pages.
 Notice of Allowance issued in U.S. Appl. No. 10/683,317, mailed Nov. 28, 2011, 11 pages.
 "Boingo Wireless Service Installed at LaGuardia Airport," Jun. 17, 2003, Copyright 2003 M2Communications Ltd., found at www.findarticles.com, Dec. 8, 2003, 1 pg.
 "West Point Unwired: the Military Academy at West Point Continues to Lead the Way in High-Tech Curriculum with Wireless Classroom Networking," Communication News, Jun. 2003, Copyright 2003 M2 Communications Ltd., found at www.findarticles.com, 5 pgs., printed Dec. 8, 2003.
 Molta, Dave, "Wireless Hotspots Heat Up," Mobile & Wireless Technology, pp. 1-8, May 15, 2003, Copyright 2003 M2Communications Ltd., found at www.networkcomputing.com, printed Dec. 8, 2003, 8 pgs.
 Jackson, William, "Wireless at West Point: Officers of the Future Use IT in Class Now, in the Field Later (Technology Report)," Apr. 21, 2003, GCN, pp. 1-3, www.gcn.com.
 Lingblom, Marie, Cranite Develops SMB Strategy, CRN, San Jose, CA, Jun. 23, 2003, 2 pgs.
 Dornan, Andy "Wireless LANs: Freedom vs. Security?" Network Magazine, Jul. 2003, pp. 36-39, www.networkmagazine.com.
 O'Shea, Dan, "PCTEL looks past patent suit toward fusion of Wi-Fi, PC" Telephonyonline, Jun. 2, 2003, pp. 1-2, found at www.telephonyonline.com, Primedia Business Magazines and Media, printed Dec. 8, 2003.

- O'Shea, Dan, "Boingo to Launch Initiative Aimed at Carrier Market" Telephonyonline, Mar. 10, 2003, 1 pg., found at www.telephonyonline.com, Primedia Business Magazines and Media, printed Dec. 8, 2003.
- International Search Report for International Patent Application No. PCT/US03/32912, completed Mar. 22, 2004, mailed Apr. 8, 2004, 6 pgs.
- International Search Report for International Patent Application No. PCT/US03/32268, completed Oct. 17, 2004, mailed Oct. 29, 2004, 6 pgs.
- Fan, Chen, et al., "Distributed Real Time Intrusion Detection System for 3G," Proceedings of ICC2004, 2004, pp. 1566-1570.
- Yu, Zhao-xu et al., "Fuzzy Logic Based Adaptive Congestion Control Scheme for High-Speed Network," vol. 33, No. 4, Information and Control, Aug. 2004, pp. 389-393 (with English abstract).
- Hamano, Takafumi et al., "A Redirection-Based Defense Mechanism Against Flood-Type Attacks in Large Scale ISP Networks," 10th Asia-Pacific Conf. On Comm. and 5th Int'l Symposium on Multi-Dimensional Mobile Comm., 2004, pp. 543-547, IEEE #07803-8601-09/04.
- Sarolahti, Pasi, "Congestion Control on Spurious TCP Retransmission Timeouts," Globecom 2003, pp. 682-686, IEEE #0-7803-7974-8.
- Estevez-Tapiador, Juan M., et al., "Measuring Normality in HTTP Traffic for Anomaly-Based Intrusion Detection," Computer Networks 45 (2004), pp. 175-193, available at www.sciencedirect.com, El Sevier 2004 #13891286.
- Xing, Xu-Jia, et al., "A Survey of Computer Vulnerability Assessment," Chinese Journal of Computers, vol. 27, No. 1, Jan. 2004, pp. 1-11 (with English abstract).
- Wen et al. "Development of a Snort-Based Security Network Management and Real-Time Intrusion Detection System," Journal of Beijing Normal Univ. (Natural Science), vol. 40, No. 1, Feb. 2004, pp. 40-43 (with English abstract).
- Thottethodi, Methune, et al., "Exploiting Global Knowledge to Achieve Self-Tuned Congestion Control for k-Ary n-Cube Networks," IEEE Transactions on Parallel and Distributed Systems, vol. 15, No. 3, Mar. 2004, pp. 257-272, IEEE #1045-9219/04.
- Trabelsi, Zouheir, et al., "Malicious Sniffing Systems Detection Platform," 2004 IEEE, pp. 201-207, IEEE #0-7695-2068-5/04.
- Guangzhi, Qu, et al., "A Framework for Network Vulnerability Analysis," Proceedings of the IASTED Int'l Conf., Comm., Internet & Information Tech., Nov. 18-20, 2004, St. Thomas, US Virgin Islands, pp. 289-294.
- Albuquerque, Celio, et al., "Network Border Patrol: Preventing Congestion Collapse and Promoting Fairness in the Internet," IEEE/ACM Transactions on Networking, vol. 12, No. 1, Feb. 2004, pp. 173-186, IEEE #1063-6692/04.
- Wirbel, Loring, "Security Stampede Could Flatten IPsec," Network Magazine, Jan. 2004, p. 12, available at www.networkmagazine.com.
- Macleod, Calum, "Freeing the Shackles with Secure Remote Working," Comtec, Oct. 2003, pp. 66-67.
- Fisher, Dennis, "SSL Simplifies VPN Security," IT Week, Nov. 10, 2003, p. 40, available at www.eweek.com/security.
- Conry-Murray, Andrew, "SSL VPNs: Remote Access for the Masses," Network Magazine, Oct. 2003, pp. 26-32, available at www.networkmagazine.com.
- "Permeo Supports Microsoft Network Access Protection for Simplified Secure Remote Access; Permeo's Base5 Support of Microsoft Technology Provides "Zero Touch" Policy Enforcement", Apr. 25, 2005, 2 pgs., Newswire, found at www.nerac.com. #NDN-121-0552-8254-9.
- Permeo Drives Out Operational Costs, Simplifies Secure Remote Access, Mar. 25, 2005, 2 pgs., Newswire, found at www.nerac.com. #NDN-121-0549-5967-5.
- "Netilla Launches SSL VPN for Citrix. (Industry Briefs) (Virtual Private Networks) (Brief Article)," Sep. 20, 2004, 2 pgs., Computer Reseller News, found at www.nerac.com. #NDN-218-0991-7652-9.
- "Netilla Launches Secure Gateway Appliance Family of Application-Specific SSL VPN Products; Initial SGA-C Model Provides Secure Remote Access to Citrix MetaFrame Presentation Server Installations . . ." Sep. 13, 2004, 3 pgs., PR Newswire, found at www.nerac.com. #NDN-218-0987-0667-2.
- "Secure Remote Access.(Network Security) (VPN Gateway 4400 Series) (Brief Article)," Mar. 1, 2004, 2 pgs., Communication News, vol. 41, found at www.nerac.com. #NDN-218-0925-2711-6.
- "Fortinet and Aventail Deliver Joint Solution for Clientless Remote Access with High-Performance Antivirus Protection; Integrated SSL VPN and Antivirus Offering Provides Clientless Remote Access with Complete Content Security", Jan. 5, 2004, 3 pgs., PR Newswire, found at www.nerac.com. #NDN-218-0845-8319-2.
- Hamblen, Matt, "Cisco Targets SSL VPN Vendors, Adds Support for Clientless Security Protocol: Installed Base of VPN Devices May Give it an Edge, Despite Late Entry," Nov. 17, 2003, 3 pgs., Computerworld, vol. 37, No. 46, found at www.nerac.com. #NDN-218-0841-5076-0.
- Hamzeh, K., et al., "Point-to-Point Tunneling Protocol—PPTP RFC 2637" Network Working Groups, Jul. 1999, pp. 1-54, Microsoft Corporation.
- International Search Report and Written Opinion for International Patent Application No. PCT/US04/29249, completed Nov. 28, 2005, mailed Dec. 15, 2005, 10 pgs.
- Pfleeger, Charles P., Computer Network Security, Security in Computing, 1989, pp. 364-415, Ch. 10, PTR Prentice-Hall, Inc., Englewood Cliffs, NJ.
- Office Action for U.S. Appl. No. 10/922,041, mailed Jul. 13, 2007, 20 pgs.
- Stone, David, "Securing Wireless LANs with VPN", Intel Information Technology White Paper, Intel Corp., May 2006, 8 pgs. Order N#313185-001US.
- Office Action for U.S. Appl. No. 10/683,317, mailed Oct. 9, 2007, 20 pgs.
- Office Action for U.S. Appl. No. 10/687,002, mailed Oct. 18, 2007, 10 pgs.
- Office Action for U.S. Appl. No. 11/078,223, mailed Oct. 31, 2007, 8 pgs.
- Office Action for U.S. Appl. No. 11/076,652, mailed Jan. 25, 2008, 9 pgs.
- Office Action for U.S. Appl. No. 10/687,002, mailed Apr. 17, 2008, 12 pgs.
- Office Action for U.S. Appl. No. 10/683,317, mailed Jun. 9, 2008, 15 pgs.
- Office Action for U.S. Appl. No. 11/076,672, mailed Jul. 9, 2008, 12 pgs.
- Office Action for U.S. Appl. No. 11/076,652, mailed Jul. 22, 2008, 8 pgs.
- Office Action for U.S. Appl. No. 11/076,591, mailed Aug. 13, 2008, 10 pgs.
- Office Action for U.S. Appl. No. 11/076,719, mailed Sep. 4, 2008, 7 pgs.
- SBC Technology Resources, Inc., XNMP-XML Network Management Protocol and Interface, Jul. 19, 2002, pp. 1-9, <http://www.ietf.org/proceedings/02jul/slides>.
- Shim, Choon B., "XNMP for IP Telephony Management," Enterprise Networks & Servers, Jun. 2, 2006, 7 pgs.
- Office Action for U.S. Appl. No. 11/076,652, mailed Dec. 11, 2008, 8 pgs.
- Office Action for U.S. Appl. No. 10/687,002, mailed Jan. 7, 2009, 14 pgs.
- Office Action for U.S. Appl. No. 11/076,672, mailed Feb. 3, 2009, 10 pgs.
- Oh, et al., "Interaction Translation Methods for XML/SNMP Gateway," Jul. 11, 2003, retrieved from <http://web.archive.org/web/20030711162412/http://dpmn.postech.ac.kr/papers/DSOM/02/xml-snmpp-gateway/xml-snmpp-gateway.pdf>, pp. 1-12.
- Office Action for U.S. Appl. No. 10/683,317, mailed Feb. 11, 2009, 17 pgs.
- Office Action for U.S. Appl. No. 11/076,591, mailed Feb. 13, 2009, 26 pgs.
- International Preliminary Report on Patentability for International Patent Application No. PCT/US03/032268 completed Jan. 4, 2005, 3 pgs.

- International Preliminary Report on Patentability for International Patent Application No. PCT/US03/032912 completed Jun. 28, 2004, 3 pgs.
- International Preliminary Report on Patentability (Ch. I) of the International Searching Authority for International Patent Application No. PCT/US04/029249 issued Feb. 21, 2006, 6 pgs.
- Office Action for U.S. Appl. No. 11/076,719, mailed Mar. 17, 2009, 8 pgs.
- Office Action for U.S. Appl. No. 10/922,041, mailed Dec. 6, 2005, 10 pgs.
- Office Action for U.S. Appl. No. 10/922,041, mailed Mar. 30, 2006, 18 pgs.
- Office Action for U.S. Appl. No. 10/922,041, mailed Aug. 11, 2006, 19 pgs.
- Office Action for U.S. Appl. No. 10/922,041, mailed Jan. 30, 2007, 20 pgs.
- Office Action for U.S. Appl. No. 10/683,317, mailed Apr. 5, 2007, 6 pgs.
- Office Action for U.S. Appl. No. 10/687,002, mailed May 2, 2007, 10 pgs.
- Office Action for U.S. Appl. No. 10/922,041, mailed May 8, 2009, 13 pgs.
- Office Action for U.S. Appl. No. 11/076,672, mailed Jul. 21, 2009, 11 pgs.
- Notice of Allowability for U.S. Appl. No. 11/076,646, mailed Jul. 24, 2009, 7 pgs.
- Crandell et al., "A Secure and Transparent Firewall Web Proxy," Oct. 2003, USENIX, Retrieved from the internet on Jul. 15, 2009: <URL: http://www.usenix.org/event/lisa03/tech/full_papers/crandell/crandell.pdf>.
- Sommerlad, "Reverse Proxy Patterns," 2003 Retrieved from the Internet on Jul. 15, 2009, 27 pages; <URL: <http://www.modsecurity.org/archive/ReverseProxy-book-1.pdf>>.
- Office Action for U.S. Appl. No. 11/076,591, mailed Aug. 6, 2009, 29 pgs.
- Office Action for U.S. Appl. No. 10/683,317, mailed Aug. 18, 2009, 17 pgs.
- Rashti et al., "A Multi-Dimensional Packet Classifier for NP-Based Firewalls," Proceedings of the 2004 Int'l Symposium on Applications and the Internet, Jan. 2004, 5 pages, from the internet, printed Aug. 12, 2009: <URL: <http://ieeexplore.ieee.org/stamp/stamp.jsp?tp=&arnumber=1266123&isnumber=28312>>.
- Williamson, Matthew, "Throttling Viruses: Restricting Propagation to Defeat Malicious Mobile Code," Proceedings of the 18th Annual Computer Security Applications Conference, 2002 IEEE, 8 pages.
- Williamson, et al., "Virus Throttling," Virus Bulletin Research Feature 1, Mar. 2003, 4 pgs.
- Office Action for U.S. Appl. No. 11/076,672, mailed Jan. 7, 2010, 9 pgs.
- Office Action for U.S. Appl. No. 11/076,591, mailed Feb. 2, 2010, 34 pgs.
- Office Action for U.S. Appl. No. 11/076,591, mailed Jul. 20, 2010, 33 pgs.
- Office Action for U.S. Appl. No. 10/683,317, mailed Jul. 23, 2010, 9 pgs.
- Office Action for U.S. Appl. No. 12/506,140, mailed Sep. 1, 2010, 11 pgs.
- "Discussion of Conceptual Difference Between Cisco IOS Classic and Zone-Based Firewalls," Oct. 2007, Cisco Systems, Inc., San Jose, CA, 4 pgs.
- Cisco IOS Firewall Zone-Based Policy Firewall, Release 12.4(6)T, Technical Discussion, Feb. 2006, 77 pgs., Cisco Systems, Inc., San Jose, CA.
- Zone-Based Policy Firewall Design and Application Guide, Document ID: 98628, Sep. 13, 2007, 49 pgs., Cisco Systems, Inc., San Jose, CA.
- SP Maj, W Makairanondh, D Veal, "An Evaluation of Firewall Configuration Methods," IJSCSNS International Journal of Computer Science and Network Security, vol. 10, No. 8, Aug. 2010, 7 pgs.
- Using VPN with Zone-Based Policy Firewall, May 2009, Cisco Systems, Inc., San Jose, CA, 10 pgs.
- Cisco IOS Firewall Classic and Zone-Based Virtual Firewall Application Configuration Example, Document ID: 100595, Feb. 12, 2008, 20 pgs., Cisco Systems, Inc., San Jose, CA.
- Class-Based Policy Provisioning: Introducing Class-Based Policy Language (CPL), Aug. 2008, 36 pgs., Cisco Systems, Inc., San Jose, CA.
- Cisco IOS Zone Based Firewall Example, at <http://www.linickx.com/archives/2945/cisco-ios-zon...>, printed Dec. 7, 2010, 6 pgs., LINICKX.com.
- Zone-Based Policy Firewall, Published Feb. 22, 2006, Updated Jun. 19, 2006, 46 pgs., Cisco Systems, Inc., San Jose, CA.
- Applying Zone-based Firewall Policies in Cisco Security Manager, Published Mar. 2009, Revised Sep. 2009, Cisco Systems, Inc., San Jose, CA.
- "FreeBSD Handbook, Chapter 30 Firewalls," 2003, found at www.freebsd.org/doc/handbook/firewalls-ipfw.html, printed Dec. 27, 2010, 13 pgs.
- Watters, Paul, "Solaris 8 Administrator's Guide, Chapter 4, Network Configuration," O'Reilly & Associates, Inc., Jan. 2002, 17 pgs.
- Spitzner, Lance, "Configuring network interface cards: getting your interfaces to talk," Mar. 23, 2004, 4 pgs.
- Gite, Vivek, "Redhat/CentOS/Fedora Linux Open Port," Sep. 13, 2007, found at www.cyberciti.biz/faq/howto-rhel-linux-open-port-using-iptables/ printed Jan. 3, 2011, 7 pgs.
- Office Action for U.S. Appl. No. 10/683,317, mailed Jan. 3, 2011, 12 pgs.
- Office Action for U.S. Appl. No. 12/617,211, mailed Feb. 3, 2011, 14 pgs.
- "Managing Firewall Services," User Guide for Cisco Security Manager 3.3.1, Oct. 2009, Ch. 11, 90 pgs., Cisco Systems, Inc., San Jose, CA.
- "Cisco Common Classification Policy Language," Cisco Router and Security Device Manager 2.4 User's Guide, Ch. 34, 2007, 32 pgs., Cisco Systems, Inc., San Jose, CA.
- Guide to User Documentation for Cisco Security Manager 4.0, Jun. 18, 2010, Cisco Systems, Inc., San Jose, CA.
- Cisco Configuration Professional: Zone-Based Firewall Blocking Peer to Peer Traffic Configuration Example, Document ID: 112237, Updated Dec. 3, 2010, 25 pgs., Cisco Systems, Inc., San Jose, CA.
- Tuning Cisco IOS Classic and Zone-Based Policy Firewall Denial-of-Service Protection, 2006, 10 pgs., Cisco Systems, Inc., San Jose, CA.
- Holuska, Marty, Using Ciscos IOS Firewalls to Implement a Network Security Policy, Fort Hays State University/INT 490, printed Dec. 6, 2010, 5 pgs., http://quasarint.com/Capstone/zb_policy.php.
- Cisco Feature Navigator, Cisco Systems, Inc., San Jose, CA, printed on Dec. 2, 2010, 4 pgs., at <http://tools.cisco.com/ITDIT/CFN/Dispatch>.
- Office Action for U.S. Appl. No. 12/506,140, mailed Feb. 18, 2011, 13 pgs.
- Office Action for U.S. Appl. No. 12/617,211, mailed Jul. 19, 2011, 18 pgs.
- Office Action for U.S. Appl. No. 12/506,140, mailed Aug. 4, 2011, 18 pgs.
- Office Action for U.S. Appl. No. 12/753,390, mailed Dec. 8, 2011, 19 pgs.
- Notice of Allowance for U.S. Appl. No. 12/617,211, mailed Dec. 12, 2011, 8 pgs.
- Office Action for U.S. Appl. No. 12/579,566, mailed Oct. 6, 2010, 7 pgs.
- Notice of Allowance for U.S. Appl. No. 12/579,566, mailed Mar. 23, 2011, 12 pgs.
- Notice of Allowance for U.S. Appl. No. 12/579,566, mailed May 13, 2011, 8 pgs.
- Office Action for U.S. Appl. No. 10/683,317, mailed Jun. 8, 2011, 15 pgs.
- Office Action for U.S. Appl. No. 13/173,764, mailed Jul. 17, 2012, 15 pgs.

* cited by examiner

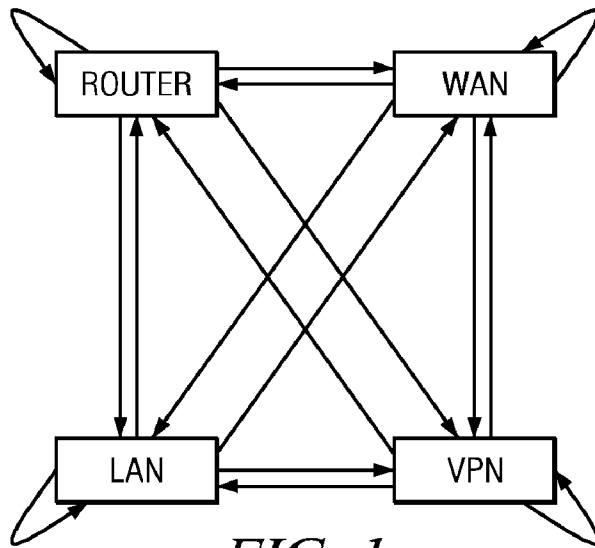


FIG. 1

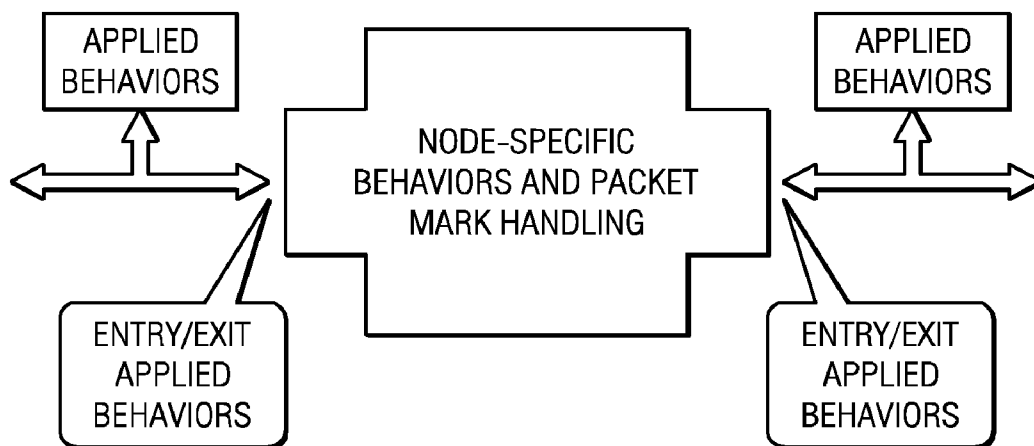
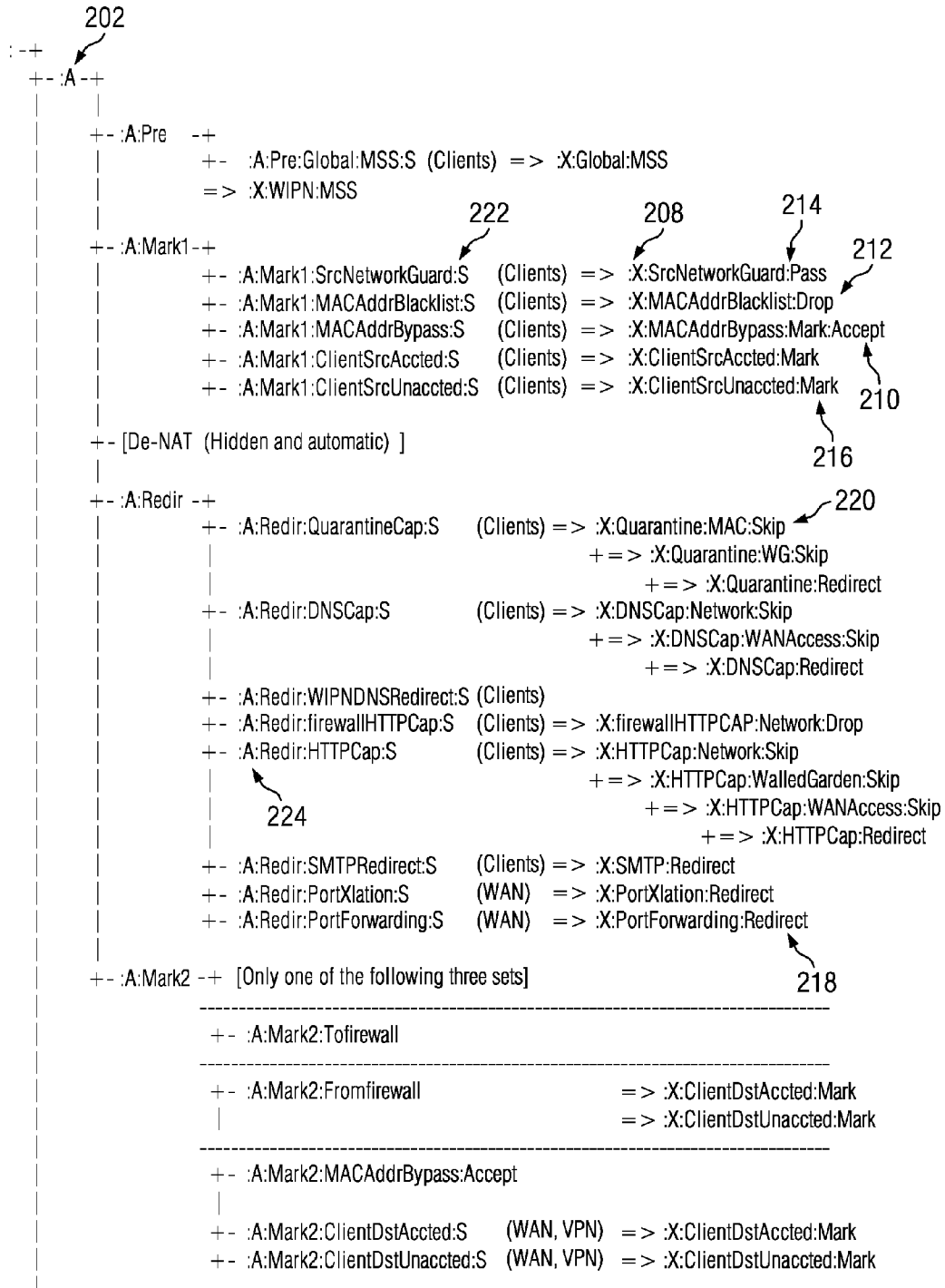


FIG. 3



A TO FIG. 2B

FIG. 2A

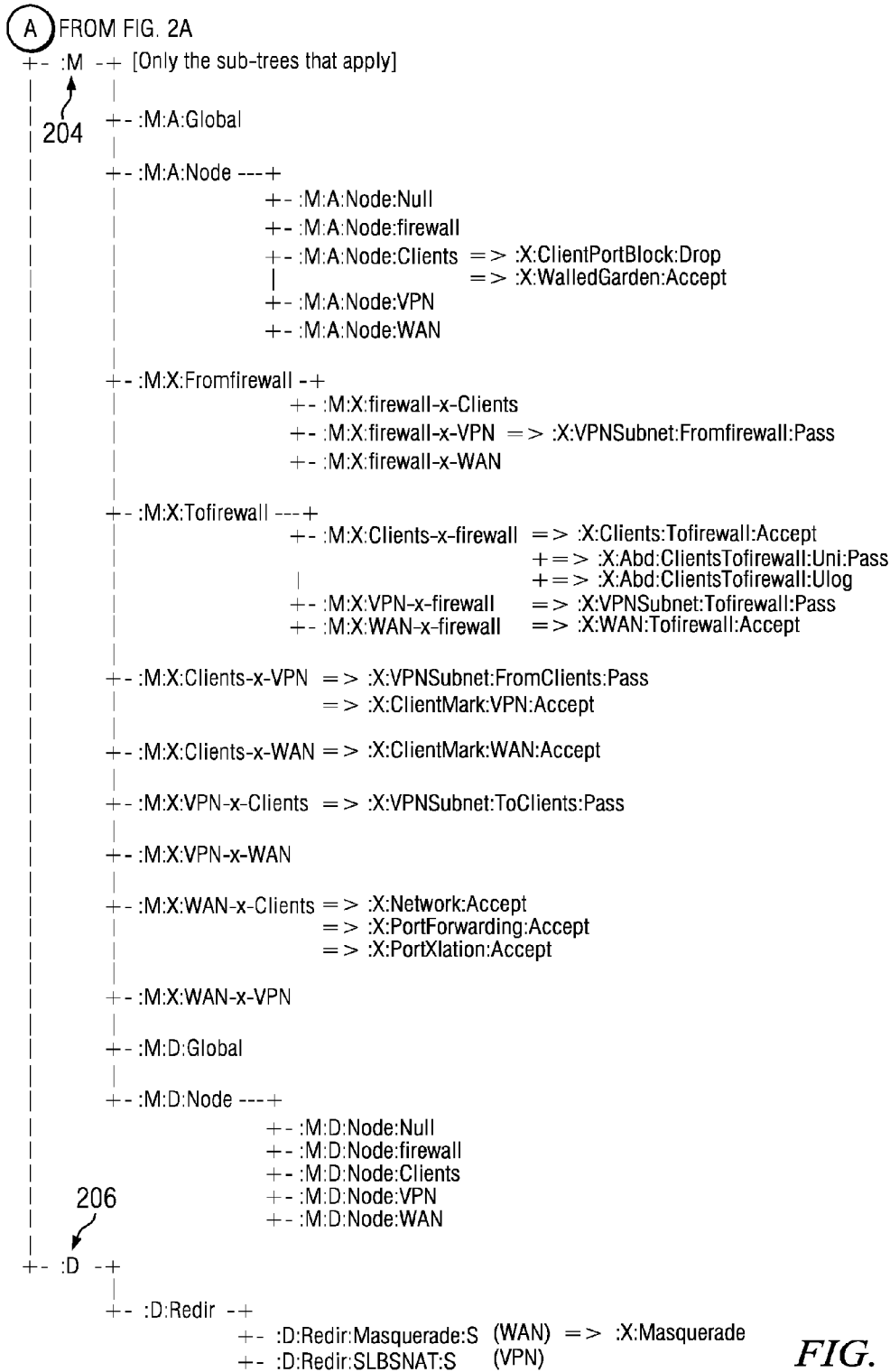


FIG. 2B

1

**DYNAMICALLY ADAPTIVE NETWORK
FIREWALLS AND METHOD, SYSTEM AND
COMPUTER PROGRAM PRODUCT
IMPLEMENTING SAME**

CROSS-REFERENCE TO RELATED
APPLICATIONS

This application is a continuation of U.S. patent application Ser. No. 12/579,566, filed Oct. 15, 2009, now U.S. Pat. No. 8,032,933, issued on Oct. 4, 2011, entitled "DYNAMICALLY ADAPTIVE NETWORK FIREWALLS AND METHOD, SYSTEM AND COMPUTER PROGRAM PRODUCT IMPLEMENTING SAME," which is a continuation of U.S. patent application Ser. No. 11/076,719, filed Mar. 10, 2005, issued on Oct. 27, 2009 as U.S. Pat. No. 7,610,621, entitled "SYSTEM AND METHOD FOR BEHAVIOR-BASED FIREWALL MODELING," which claims priority from Provisional Application No. 60/551,698, filed Mar. 10, 2004, entitled "SYSTEM AND METHOD FOR BEHAVIOR-BASED FIREWALL MODELING." This application also relates to U.S. patent application Ser. No. 10/683,317, filed Oct. 10, 2003, now U.S. Pat. No. 8,117,639, issued on Feb. 14, 2012, entitled "SYSTEM AND METHOD FOR PROVIDING ACCESS CONTROL," and Provisional Application No. 60/551,703, entitled "SYSTEM AND METHOD FOR PROVIDING A CENTRALIZED DESCRIPTION/CONFIGURATION OF CLIENT DEVICES ON A NETWORK ACCESS GATEWAY," filed Mar. 10, 2004. All applications referenced herein are hereby fully incorporated by reference.

TECHNICAL FIELD

Embodiments disclosed herein relate generally to network firewall designs and methodologies and more specifically to network firewalls that can dynamically adapt to changing conditions and operator requirements.

BACKGROUND

The communication of data over networks has become an important, if not essential, way for many organizations and individuals to communicate. The Internet is a global network connecting millions of computers using a client-server architecture in which any computer connected to the Internet can potentially receive data from and send data to any other computer connected to the Internet. The Internet provides a variety of methods in which to communicate data, one of the most ubiquitous of which is the World Wide Web. Other methods for communicating data over the Internet include e-mail, usenet newsgroups, telnet and FTP.

Users typically access the Internet either through a computer connected to an Internet Service Provider ("ISP") or computer connected to a local area network ("LAN") provided by an organization, which is in turn connected to an ISP. The network service provider provides a point of presence to interface with the Internet backbone. Routers and switches in the backbone direct data traffic between the various ISPs.

As the number of networked devices has increased, so too has the amount and nature of network traffic. One unfortunate side effect is the evolution of destructive or unauthorized access to the data or operations of networked devices. As a result, technological advances have produced a general class of network service known as a "firewall", which can block or limit access to computers, networks and services "inside" the firewall, from access by any network devices "outside" the

2

firewall. Representation of "inside" and "outside" a firewall is analogous to physical security and protection, where something "inside" is protected from something "outside". Hence, firewall technology and services normally have one network interface connected to the general internet or an unprotected segment of any network and the protected computer and network assets are located behind another network interface controlled by the firewall that is a different, protected network segment.

Typically, network firewalls are configured in a static manner, wherein the firewall's configuration is established and changes infrequently.

Firewalls are potentially complicated structures that are generally maintained manually by a skilled professional. Firewall owners must therefore limit themselves to simple and inflexible features provided by typical network applications/devices, or they must invest in professionals who are skilled enough to construct and maintain firewalls to their specifications. In other words, the skilled firewall professional provides the intelligence, decision-making and flexibility that is lacking in static firewall technology.

Previous firewall implementations are typically limited in two ways: (1) they are embedded in an inflexible hardware platform with no ability to expand and/or (2) they offer only a very simple set of user-visible features both because they have no expandability and because they lack the conceptual model to express more advanced features in a way that is convenient for customers to use. These solutions are inadequate because they limit the power of the features available to customers.

While statically configured firewalls serve a purpose for protecting static network and computing assets, the ability to dynamically reconfigure firewalls in a changing network environment represents a significant evolutionary step in network firewall technology. Dynamic firewalls can monitor transient network client connections and adjust themselves to optimally serve and protect a dynamically changing network client population on both "sides" of a firewall.

SUMMARY

Embodiments disclosed herein expose a conceptual model of firewall structure that makes it far easier to construct an automated system to bridge the gap between the desires of users and the technical implementation of those desires.

One embodiment of the automated system provides a new level of flexibility including, but not limited to, dynamically adding new network interface abstractions or groupings of interface abstractions and tailoring the behavior of those abstractions to the network client devices' specific needs. The automated system enables the firewall owner to generally describe how the firewall should behave, and the automated system can automatically produce the requisite, specific firewall configuration, without detailed manipulation by a human operator.

One embodiment models sources and destinations of network traffic (e.g., client, Virtual Private Network, and Wide Area Network-side devices) as "nodes" that exhibit particular sets of behaviors. Network interface devices (including virtual devices) can then be associated with one of the nodes and assigned the same behaviors/rules as all other devices in that particular node. In this way, the data flows between devices can be monitored and controlled according to the behaviors and rules of each device.

Another embodiment extends the aforementioned behavior description and configuration to modeling the connections between nodes and not just the devices (virtual or physical) of

a particular node. That is to say, not only do the devices belonging to a node can exhibit particular behaviors, but the connections between each node can also exhibit particular behaviors.

Another embodiment defines a conceptual framework of the firewall and elucidates the flow of traffic through the gateway and provides a level of abstraction that can be understood and manipulated by human operators to tailor the system's behaviors to their needs.

Another embodiment enables the firewall to react dynamically to important changes such as, but not limited to, the addition or removal of physical or virtual network interfaces. This can be especially important for certain applications because the embodiment permits the deployment of unsophisticated, general implementation technologies (i.e., off-the-shelf hardware) and does not require a custom hardware platform.

BRIEF DESCRIPTION OF THE DRAWINGS

A more complete understanding of the invention and the advantages thereof may be acquired by referring to the following description, taken in conjunction with the accompanying drawings in which like reference indicates like features and wherein:

FIG. 1 illustrates a set of nodes for a firewall model;

FIG. 2 illustrates a set of firewall rules; and

FIG. 3 illustrates aspects of behaviors applied to packet traversal through the firewall model.

DETAILED DESCRIPTION

The following applications are hereby fully incorporated by reference herein in their entirety: U.S. application Ser. No. 10/683,317, filed Oct. 10, 2003, pending, entitled "SYSTEM AND METHOD FOR PROVIDING ACCESS CONTROL"; Provisional Application No. 60/551,698, filed Mar. 10, 2004, entitled "SYSTEM AND METHOD FOR BEHAVIOR-BASED FIREWALL MODELING"; Provisional Application No. 60/551,754, filed Mar. 10, 2004, entitled "SYSTEM AND METHOD FOR COMPREHENSIVE CODE GENERATION FOR SYSTEM MANAGEMENT," which converted into U.S. application Ser. No. 11/078,223, filed Mar. 10, 2005, entitled "SYSTEM AND METHOD FOR COMPREHENSIVE CODE GENERATION FOR SYSTEM MANAGEMENT," issued as U.S. Pat. No. 7,509,625; Provisional Application No. 60/551,703, filed Mar. 10, 2004, entitled "SYSTEM AND METHOD FOR PROVIDING A CENTRALIZED DESCRIPTION/CONFIGURATION OF CLIENT DEVICES ON A NETWORK ACCESS GATEWAY"; Provisional Application No. 60/551,702, filed Mar. 10, 2004, entitled "SYSTEM AND METHOD FOR ACCESS SCOPE CONTROL ("WALLED GARDENS") FOR CLIENTS OF A NETWORK ACCESS GATEWAY," which converted into U.S. application Ser. No. 11/076,591, filed Mar. 10, 2005, pending, entitled "METHOD AND SYSTEM FOR CONTROLLING NETWORK ACCESS"; Provisional Application No. 60/551,699, filed Mar. 10, 2004, entitled "SYSTEM AND METHOD FOR DYNAMIC BANDWIDTH CONTROL"; Provisional Application No. 60/551,697, filed Mar. 10, 2004, entitled "SYSTEM AND METHOD FOR DETECTION OF ABERRANT NETWORK BEHAVIOR BY CLIENTS OF A NETWORK ACCESS GATEWAY," which converted into U.S. application Ser. No. 11/076,652, filed Mar. 10, 2005, issued as U.S. Pat. No. 7,590,728, entitled "SYSTEM AND METHOD FOR DETECTION OF ABERRANT NETWORK BEHAVIOR BY CLIENTS OF A

NETWORK ACCESS GATEWAY"; Provisional Application No. 60/551,705, filed Mar. 10, 2004, entitled "SYSTEM AND METHOD FOR DOUBLE-CAPTURE/DOUBLE-REDIRECT TO A DIFFERENT LOCATION," which converted into U.S. application Ser. No. 11/076,646, filed Mar. 10, 2005, issued as U.S. Pat. No. 7,665,130, entitled "SYSTEM AND METHOD FOR DOUBLE-CAPTURE/DOUBLE-REDIRECT TO A DIFFERENT LOCATION"; Provisional Application No. 60/551,704, filed Mar. 10, 2004, entitled "SYSTEM AND METHOD FOR NETWORK MANAGEMENT XML ARCHITECTURAL ABSTRACTION," which converted into U.S. application Ser. No. 11/076,672, filed Mar. 10, 2005, abandoned, entitled "SYSTEM AND METHOD FOR NETWORK MANAGEMENT XML ARCHITECTURAL ABSTRACTION"; and Provisional Application No. 60/551,703, filed Mar. 10, 2005, entitled "SYSTEM AND METHOD FOR PROVIDING A CENTRALIZED DESCRIPTION/CONFIGURATION OF CLIENT DEVICES ON A NETWORK ACCESS GATEWAY."

The invention considers the firewall as implemented within a device, service or server at the nexus of two network segments but, at a conceptual level, it appears more like any other network traffic origination or destination device; i.e., while the functional aspects of a firewall may differentiate itself from other network infrastructure devices or services, at a conceptual level it inspects, marks, prioritizes and routes traffic similar to other network packet handling service.

Embodiments disclosed herein seek to abstract the diverse set of network and firewall operations into a generalization of activities amongst "nodes" in the firewall model. With a basic conceptual model, all firewall behavior can be characterized as high-level operations on network traffic flowing through the firewall.

The firewall is the nexus in a fully-interconnected graph (FIG. 1) with four nodes. Each node in FIG. 1 is simultaneously a source of and destination for network packets. Packets travel between nodes over intra-firewall connections within the firewall model. Implementations of intra-firewall connections can be software, in-memory implementations or can be hardware, signaling implementations. A non-limiting example of a software, in-memory implementation can be realized through a computer program product comprising a computer readable storage medium storing computer program code executable by a computer. As one of ordinary skill in the art can appreciate, a computer memory is a non-limiting example of a computer readable storage medium.

There are three essential stages to a packet's journey through the firewall model:

Arriving, node-specific behaviors. Where network traffic is inspected upon arrival at a node in the firewall model and the model acts upon this traffic, based on its configuration at the time of the traffic arrival and the processing node's capabilities.

Connection-specific behaviors. Some behaviors are contextually important when considered as part of a connection between two nodes in the firewall model. When network traffic flows over the connection it can be inspected and handled at one or both of the node endpoints of the connection.

Departing, node-specific behaviors. Where network traffic is inspected prior to departure from a node and the firewall acts upon this traffic, based on its configuration at the time of the traffic departure and the processing node's capabilities.

Embodiments disclosed herein can employ existing operating system mechanisms to implement the concepts. For

example, the Linux operating system has a subsystem known as “iptables” (for Internet Protocol Tables) that offers a “rule” syntax for representing the logic of packet handling through the Linux system.

As illustrated in FIG. 2, and described below, the firewall employs dynamic chains of rules (serialized sequences of one or more rules) to “tap” into the main firewall chains and offer isolated, well-defined places for specific behavior to be introduced. One reason for functional extensions is to enrich the firewall rule predicate or antecedent functionality to provide more functionality as domain-specific applications require or as general network technology evolves.

To dynamically integrate devices or interfaces, the firewall defines the following objects:

Device—Represents a source or sink of network traffic. In the firewall conceptual framework, a “device” can be mapped to a physical device or network interface, or it can be mapped to a virtual device; e.g., a virtual private network (VPN) is an abstraction of routes, keys and permissions that represent a virtual network segment, the firewall can manipulate the facets of a VPN through a VPN device in the firewall abstraction nomenclature. Devices always belong to nodes when they are active.

Chain—Represents a list of one or more firewall rules. A firewall rule has the normal predicate/antecedent format, where elements of the predicate must match before the actions of the antecedent are enacted. Chains of firewall rules are linear and serial, as the name implies.

Node—Could be any one of the nodes represented in FIG. 1. A Node can have any number of Services or Devices.

Service—Represents a node-specific or connection-specific behavior. A service may be a collection of atomic behaviors that are cohesive in their functionality and represent a larger piece of utility to the system. Any node or connection may have one or more services.

When a new device is introduced to the firewall system, a new Device object is created and placed in the Null node, which has no services (behaviors) and is not connected to any other node. The new device is then moved to the Node to which it belongs. A Device can be moved from one node to another. The process of “moving” a device from one node to another deletes existing behaviors and states and associates new ones.

When a device is deleted from the system, its Device object is moved to the Null node and then left to die (e.g., at object cleanup). In one implementation, a Java Virtual Machine provides garbage collection for null-ed firewall objects.

Connections between nodes, as represented in FIG. 1, are also created dynamically and can migrate or redefine their endpoints as the firewall system deems necessary.

One of the strengths of the firewall is its careful identification and segmentation of traffic flows. Each such flow is represented by the concept of a connection between nodes. Just as nodes have behaviors, so do connections. Some of the transformations applied to a packet depend entirely on the node through which the packet arrives or departs. Additional transformations can be associated with the connection through which the packet travels, without regard to the nodes between which the packet is traveling. FIG. 3 illustrates the salient aspects of behaviors applied to packet traversal through the firewall model. Thus, in a generic and customizable way, basic facilities can be adjusted by tailoring the specific behaviors of the various connections.

One important example of this is the connection between the Clients node and the WAN node. Packets that bear the mark of a client that is authorized to use the WAN connection are permitted to flow along this connection and arrive at the

WAN node. Packets from clients that don’t have this authorization are blocked. Network communications port blocking is typically a Client-specific behavior; i.e., in this embodiment’s conceptual model, port blocking is germane only to network client device traffic and, hence, network port blocking is only considered when network client traffic is considered (i.e., traffic from the client node).

Network port forwarding is specific to the connection from the WAN node to the Clients node. In other words, packet processing is performed based on rules associated with the connection rather than the nodes. The nature of network port forwarding is that “outside” traffic—meaning, network traffic originating on the outside of the firewall, from the Wide-Area Network—will be addressed to a particular port as received by the firewall, whereupon the firewall will pass that network traffic, but may change the port as seen by the packet destination device.

Network Address Translation (NAT), is a WAN-specific behavior. NATed network packets have source and/or destination addresses translated to/from an internal network address that is not publicly available on the general network (or Internet). NATing is a mechanism for employing a single, public Internet Protocol Address (IPADDR) to represent a number of client devices behind a NATing service. NATed packets present a slightly different form of forwarding problem for firewalls, but it is akin to port forwarding or port translation, as the firewall must maintain a state table to keep track of NATed addresses or translated ports.

Every packet that arrives at the firewall receives a 32-bit mark (or other mark depending on implementation) that identifies how that packet is attributed. This is fundamental to accounting and authorization models, where network client traffic must be tracked. The firewall uses marks to, among other things, decide if packets are permitted to reach their destinations.

FIG. 2 illustrates the experience of a network packet as it travels through the firewall from its arriving node to its departing node. FIG. 2B is an extension of the tree graph of FIG. 2A as indicated. The path the tree graph takes is a depth-first, in-order traversal of the tree depicted in FIG. 2. In FIG. 2, the node (clients) corresponds to the defined node LAN in FIG. 1.

To help reflect the structure of the firewall, rule chains are given names in a hierarchical name space. Immediately below the root are subtrees with names “A”, “M”, “D” and “X”. These character identifiers provide a namespace separate for rules governing the firewalls behavior.

Rule chains essentially represent predicate/antecedent rule logic and can be classified as classic production rules systems as known in the Artificial Intelligence community. The tree nodes of a rule chain is a specific representation of a more general Boolean logic structure where each node in a chain tree that is traversed represented AND’d predicate logic in Boolean form. Additionally, exits from a rule chain (i.e., reaching leaf nodes) or jumps to other rule chains represent the antecedent portion of the rule.

Said differently, rule chains represent classic “If-Then” logic, as might be supported by the syntax of a software programming language.

FIG. 2 illustrates a representative set of firewall rules that handles NAT’d, MASQUERAD’d, VPN’d, port blocked, port forwarded and client authenticated traffic. While not an exhaustive list of firewall capabilities, these firewall functions are relatively standard and basic capabilities that can be found in most firewall implementations. These basic capabilities serve as an example from which to explain the dynamic firewall rule chain logic and are not meant to be an exhaustive

or limiting list of capabilities. One main embodiment of the invention is the ability to dynamically extend, prune or otherwise modify these firewall rule chain sets as functional requirements or the network operating environment changes.

The arriving (:A) sub-tree (represented at **202**) prepares packets to enter the matrix. This is where packets are marked, de-NATed (if Network Address Translation has occurred), de-MASQUERADED and redirected. Since the purpose of this sub-tree is packet “conditioning”, its rules only change network packets, and do not drop or accept them. Along with the :D sub-tree (see below), these rules implement the behaviors of nodes.

In the rule chain represented by **218**, the antecedent portion of the :A rule chain redirects a network packet based on a port forwarding rule. Specifically, this rule (**218**) rewrites a portion of the network packet header, either changing the destination address or port, so that the packet arrives at an alternate location, once the packet departs the firewall, than originally addressed. In this example, the packet header contents are modified as a result of this :A rule chain.

In the :A rule chain represented by **224**, a packets protocol is detected and “captured”, before a determination is made as to where the packet may next proceed. This particular rule chain represents a common manner for capturing unauthorized network clients and either forcing them to authenticate themselves (usually against an authentication server like LDAP) or simply redirecting them to a constrained location on the network where their ability to view network resources is limited.

It is important to note, at this point, that the rule chains represented by FIG. 2 are composite rules chains of the entire firewall model and do not describe rule chains at any particular node or attached to any particular inter-node connection. For certain rules, especially those annotated as departing to or arriving from Clients or the WAN, there are likely logically constrained attachment points so that they work properly; e.g., A: chains dealing with incoming Client packets are likely attached to the LAN interface (logical, physical or virtual), since network Clients connect to a firewall via the LAN interface. Attachment points for other rule chains may be deferred to implementation details, based on the implementation technology or optimization requirements (speed, memory or cost).

In the matrix (:M) sub-tree (represented at **204**), packets are routed through different chains depending on their source and destination nodes. The main purpose of this sub-tree is to decide if packets deserve to arrive at their destination, so the rules in this sub-tree only accept or drop packets, not change them. These rules implement the behaviors of the connections between nodes. More specifically, :M chains can be attached to the incoming/outgoing interfaces of nodes themselves, or attached to the inter-node connections.

The departing (:D) sub-tree (represented at **206**), post-processes packets that have successfully navigated the matrix. Packets that arrive here deserve to be transmitted, so the rules in this sub-tree only change packets, not drop or accept them. This is where packets are NATed and MASQUERADED. Along with the :A sub-tree, these rules implement the behaviors of nodes. :D chains are normally associated with nodes that have interfaces (logical, physical, virtual) with network segments outside of the firewall model.

The :X subtree contains chains that are compact, well-identified places where rules can be inserted and deleted dynamically. Packets arrive at these chains from well-identified “taps” in the main pathway. These taps are indicated throughout FIG. 2 by “=>” pointing at the name of the :X chain that will receive packets. This is shown, for example, at

208. :X chains exist for extensibility and may be provided, a priori, as part of the firewall implementation or may be dynamically loaded as part of a firewalls configuration or runtime reconfiguration.

In any tree structure, there are ultimately “leaves” of the tree, from which there are no child nodes. FIG. 2 demonstrates leaf chains, which have suffixes that indicate how they behave. “:Accept” chains, such as that represented at **210**, have rules with ACCEPT targets. When a packet matches an ACCEPT target, the packet immediately jumps out of the current sub-tree, and moves to the next. Accept chains are useful for forming Boolean OR constructs. For example, the following series of rules might appear in a chain that needs to accept packets that match any of the tests “A”, “B” or “C”, each of which are implemented in their own chain. As an example, the “iptables” utility available from the Linux Operating System environment uses the following syntax to enable rules:

```
iptables -t filter -A ExampleChain -j TestA:Accept
iptables -t filter -A ExampleChain -j TestB:Accept
iptables -t filter -A ExampleChain -j TestC:Accept
```

According to one embodiment, the default policy in the :M sub-tree is DROP. That is, if a packet traverses the entire :M sub-tree and never matches an ACCEPT target, it will be dropped.

“:Drop” chains, such as that represented at **212**, have rules with DROP targets. When a packet encounters a DROP target, it is discarded and will never be delivered to its destination.

“:Pass” chains, such as that represented at **214**, have rules with RETURN targets, and a single DROP target at the end. A RETURN target causes the packet to jump out of the current chain and resume its path through the “calling” chain. Each rule other than the final DROP describes a packets that should be “passed” on to further processing. Packets that match none of the RETURN rules encounter the DROP rule and are discarded. Since the DROP target in a pass chain must stay at the end of the chain, new rules, according to one embodiment, must be inserted, rather than appended.

Pass chains are useful for forming Boolean AND constructs. For example, the following series of rules might appear in a chain that needs to pass only packets that match all the tests “A”, “B” and “C”, each of which are implemented in their own chain. As an example, the “iptables” utility available from the Linux Operating System environment uses the following syntax to enable rules:

```
iptables -t filter -A ExampleChain -j TestA:Pass
iptables -t filter -A ExampleChain -j TestB:Pass
iptables -t filter -A ExampleChain -j TestC:Pass
```

“:Mark” chains, such as that represented at **216**, have rules with MARK targets. These rules write packet marks according to various criteria. These chains appear only in the :A sub-tree because packets must be accounted for as soon as they arrive.

“:Redirect” chains, like that shown at **218**, have rules with REDIRECT targets. These rules usually change a packet’s destination address and/or port.

“:Skip” chains (e.g., shown at **220**) are like pass chains, these chains have rules with RETURN targets. Unlike pass chains, skip chains have something other than a DROP target at the end. Each rule other than the final one describes packets that should skip whatever processing the final rule offers. Packets that match none of the RETURN rules are processed by the final rule. Since the final rule must stay at the end of the chain, new rules, according to one embodiment, must be inserted, rather than appended.

“:S (:J)” chains are “services” (described below). The names of nodes that subscribe to a service are shown in

parentheses after the chain. For each :S chain (e.g., shown at 222), there is a :J chain that is not shown.

A “service” is a set of rules that operate on packets in a very specific way (e.g., masquerading outgoing packets, or capturing incoming packets). Every service has two chains. The first chain has a name ending with :S. This chain appears in the packet pathway in a specific place and is guaranteed to see all packets flowing through the firewall. The second chain has a name ending with :J and contains the rules that actually implement the service. Packets that need the service are directed through the second chain by a “jumper” in the first chain. This is analogous to a hardware jumper used to enable a feature.

For example, HTTP requests arriving from the Clients node must be captured if the given client is not authorized. Thus, the :A:Redir:HTTPCap:S (shown at 224) can contain a rule that causes packets coming from eth0 to the :A:Redir:HTTPCap:J chain. The rules in the :A:Redir:HTTPCap:J chain arrange for the capture of unauthorized packets.

One example of Mark Space Allocation employs a 32-bit number that travels with the packet when it’s in the system—it is lost as soon as the packet enters a device. Marks can be read and written by rules in the firewall. They can also be read (but not written) by the routing and bandwidth control systems. Thus, firewall rules can be used to control how packets are routed and scheduled for transmission.

It can be noted from FIG. 2 that rules can be applied to nodes or connections between nodes. For example, rule 208 is applied to the node “clients” (represented by the (clients) in the rule). A rule associated with the clients node will be applied to packets to/from devices or services associated with the clients node in the firewall model. Rules can also be associated with connections. For example, for the chain shown in FIG. 2B:

```
M:X:WAN-x-Clients =>:X:Network:Accept
=>:X: PortForwarding:Accept
=>:X: PortXlation:Accept
```

The rules are applied to packets flowing on the connection between the WAN node and the clients node.

When a packet arrives at the firewall, it is automatically assigned a mark of zero (the “unmarked” mark). As quickly as possible, the firewall attempts to assign a mark that attributes the packet to whichever party is best accountable for it. This is important for two reasons:

It tells the firewall, bandwidth control and routing systems how to treat a packet. For example, priority channel packets are passed immediately by the firewall, and then transmitted by the bandwidth control system as soon as they arrive. Packets with client marks are passed conditionally, depending on whether or not the owning client has the proper authorization, and then scheduled for transmission by the bandwidth control system in accordance with the client’s provisioning.

It also tells the firewall how to account for a packet. In order for the firewall to send proper accounting reports, it must be able to match a packet to a client or other accounting entity. When the firewall marks a packet, it enables the firewall to do this.

The table below shows one embodiment of how the mark name space is allocated:

Mark (hex)	Description
0000	Unmarked
0001-0fff	RESERVED
1xxx	System traffic marks (4K marks)

-continued

Mark (hex)	Description
1000	Unattributed
1001	Firewall
1002	VPN
1003-1fff	RESERVED
2xxx	Static clients (4k marks)
3xxx	Dynamic clients (4k marks)
4000-ffff	Per-IP Bandwidth Control
Ffff	MAC address bypass

The mark ranges are in order of numerical value, but are also in order of “mark priority”. For example, a dynamic client mark has a higher priority than the firewall mark. This is why a packet traveling from a client to the firewall merits both marks, but will receive the client’s mark. Notice that the priority channel has the highest priority mark. This means that packets from a client that travels over the priority channel will be attributed to the priority channel—not the client from which it came.

All packets get “0x0000” mark automatically when they enter the firewall. A packet will receive a more informative mark if it can be attributed. These packets have limited permission to travel through the firewall and are very susceptible to being captured.

The “0x1xxx” range (where xxx is a 3-digit hexadecimal range from 000 to fff) is used to mark packets that cannot be specifically attributed with a higher mark, but can be identified by the node to/from which they are traveling. Currently, there are only two marks in this range: firewall and VPN. There is no Clients mark because all packets traveling to/from the Clients node are given the appropriate client mark. There is no WAN mark because all packets traveling to/from the WAN node are given other marks.

An important use for this range is exemplified by the VPN mark. When packets depart through the ipsec0 pseudo-device, they generate new packets that emerge from the firewall and leave through the physical eth1 device. Thus, tunneled VPN traffic competes with clients and other elements of the system to consume bandwidth on the eth1 device. For that reason, these packets must be marked so they can be accounted for.

According to one embodiment, new nodes can be dynamically generated for new pseudo-devices that, like the VPN, will generate packets that must flow out through a physical device. Each such node will be allocated a mark from this range. :D rule chains implement packet handling for pseudo devices as the packets depart the firewall.

Packets receive the “0x1000” firewall mark if they are arriving from or destined for the firewall and do not already have a higher-priority mark.

Packets receive the “0x1001” VPN mark if they are carrying tunnel traffic for a VPN node.

Marks for static clients are allocated from the “0x2xxx” range (where xxx is the hexadecimal range 000 to fff). Notice that this is a lower priority range than dynamic clients. That is, if a packet merits both a static and dynamic client mark, it will receive the dynamic client mark.

Marks for dynamic clients are allocated from range 0x3xxx, where xxx is the hexadecimal range 000 to fff.

The “0xfxxx” range is used to mark packets belong to various unaccounted categories.

The mark “0xf000” applies to packets that qualify for MAC Address Bypass.

The “0xffff” mark applies to packets in the priority channel.

11

Packets departing from the router node receive marks in this order:

Apply a client's mark to packets departing through a device owned by the client.

Apply a client's mark to packets with a destination IP address owned by the client.

For any packets that don't yet have a mark:

Apply the VPN mark to unmarked IPv6-Crypt protocol packets.

Apply the firewall mark to unmarked packets.

If the packet can be attributed to a network client, it will be. Otherwise, it will be attributed to the firewall. Since the firewall doesn't participate in VPN tunnels with clients, the VPN mark will never apply.

VPN tunnel traffic will be IPv6-Crypt protocol, and will receive the VPN mark. All other traffic will receive the firewall mark.

Packets destined for the router node receive additional marks in this order:

Apply the VPN mark to unmarked IPv6-Crypt protocol packets.

Apply the firewall mark to unmarked packets.

Packets arriving from the Clients node receive marks in this order:

Apply a client's mark to packets arriving from a device owned by the client.

Apply a client's mark to packets with a source IP address owned by the client.

Apply the MAC address bypass mark to qualifying packets.

Apply the priority channel mark to qualifying packets.

Apply additional marks in this order:

Apply the VPN mark to unmarked IPv6-Crypt protocol packets.

Apply the firewall mark to unmarked packets.

Packets arriving from the VPN node receive marks in this order:

Apply a client's mark to packets departing through a device owned by the client.

Apply a client's mark to packets with a destination IP address owned by the client.

Apply additional marks in this order:

Apply the VPN mark to unmarked IPv6-Crypt protocol packets.

Apply the firewall mark to unmarked packets.

Client marks, according to one embodiment, will never apply to this traffic. Tunnel within tunnel traffic will receive the VPN mark, just like tunnel traffic through the WAN node. All remaining traffic will receive the firewall mark.

Packets arriving from the WAN node receive marks in this order:

Apply a client's mark to packets departing through a device owned by the client.

Apply a client's mark to packets with a destination IP address owned by the client.

Apply additional marks in this order:

Apply the VPN mark to unmarked IPv6-Crypt protocol packets.

Apply the firewall mark to unmarked packets.

According to one embodiment, client marks will never apply to this traffic. Tunnel traffic will receive the VPN mark. All remaining traffic will receive the firewall mark.

If the packet can be attributed to a client, it will be. Otherwise, it will be unmarked. Note that port forwarded and port translated traffic that is not directed at a specific client will be unmarked. One way to insure that this traffic is marked and accounted for would be to set up a static client.

12

One embodiment includes a conceptual model representing a network firewall that separates firewall functionality into individually configurable and controllable components.

Another embodiment includes the conceptual model, wherein the hardware or component technology used to host a firewall model's implementation is indistinct from commercial off-the-shelf components and, therefore, the firewall is driven by a dynamically reconfigurable implementation of the firewall model. A non-limiting example of a dynamically reconfigurable implementation of the firewall model can be realized through a computer program product comprising a computer readable storage medium storing computer program code executable by a computer. One of ordinary skill in the art can appreciate that many suitable computer readable storage media exist.

Yet another embodiment includes a conceptual model, where a set of firewalls can be dynamically reconfigurable and managed as a cohesive group of firewall nodes in a network implementation comprised of several LAN and WAN segments needing firewall protection. In a system of firewalls, each protecting a separate network segment, system-wide policies can be implemented by downloading identical sets of rule chains to each firewall, as a representation of common firewall configurations. It may also be desirable to "clone-n-hone" firewall configurations, which occurs with a common rule chain configuration is provided to each firewall in a system of firewalls and individual firewalls receive localized customizations, tailoring their behavior to the needs of a particular network segment. Localized rule chain modifications make it possible to extend/modify an individual firewall's behavior, based on a general behavior policy.

According to one embodiment, the firewall behaviors can be described as predicate/antecedent rule logic acting upon dynamic data from both the configuration space of the firewall as well as changing network state and client connectivity. The rule chain predicates ("If" portions of a rule) act on data that is potentially available from multiple sources:

Configuration data of the firewall (e.g., its Internet Protocol Address, its local identification string, the version of the firewall rule chain set, etc.)

Data arriving in the network packet itself (e.g., the origination or destination address, the protocol, portions of the payload data, etc.)

Data available through firewall extensions (:X rule chains) that may be monitoring network traffic flows for activity spikes or lulls or, perhaps, a device monitoring extension that polls a timer or instrumentation device for time-sensitive data.

While the invention has been described with reference to particular embodiments, it should be understood that the embodiments are illustrative and that the scope of the invention is not limited to these embodiments. Many variations, modifications, additions and improvements to the embodiments described above are possible. It is contemplated that these variations, modifications, additions and improvements fall within the scope of the invention as detailed in the following claims.

What is claimed is:

1. A method for controlling data through a firewall performed on at least one data controlling computer having computer instructions stored on at least one non-transitory computer readable medium, comprising:

defining at least one node, wherein the at least one node is associated with two or more network interfaces;
 associating a set of firewall rules with the at least one node;
 receiving a packet at a first node of the at least one node;
 and

13

accepting or denying the packet based on the set of firewall rules, wherein the set of firewall rules is dynamically self-configurable during runtime without operator interaction, wherein the set of firewall rules comprises a plurality of chains of rules forming various paths through a hierarchical structure, and wherein the hierarchical structure comprises defined places for dynamically updating the set of firewall rules during runtime.

2. A method according to claim 1, wherein dynamically updating the set of firewall rules during runtime further comprises, during runtime, adding a rule to the set of firewall rules, deleting a rule from the set of firewall rules, or modifying a rule in the set of firewall rules without operator interaction.

3. A method according to claim 1, wherein associating the set of firewall rules with the at least one node further comprises associating a first subset of the set of firewall rules with the first node.

4. A method according to claim 3, wherein the at least one node further comprises at least two nodes including a second node, further comprising associating a second subset of the set of firewall rules with the second node.

5. A method according to claim 4, wherein the first subset of firewall rules is the same as or at least partially different from the second subset of firewall rules.

6. A method according to claim 4, wherein one of the first subset of firewall rules or second subset of firewall rules equals the entire set of firewall rules.

7. A method according to claim 1, further comprising, after receiving the packet and prior to accepting or denying the packet, conditioning the packet based on the set of firewall rules.

8. A method according to claim 7, wherein conditioning the packet based on the set of firewall rules further comprises rewriting a portion of a network packet header associated with the packet.

9. A method according to claim 1, wherein each of the at least one node is associated with at least two network interfaces.

10. A method according to claim 1, wherein each of the two or more network interfaces is connected with at least one physical device.

11. A method according to claim 1, wherein the set of firewall rules being dynamically self-configurable further comprises dynamically updating the set of firewall rules during runtime without operator interaction.

12. A device for controlling data through a firewall, comprising:

- a plurality of network interfaces, wherein each of the plurality of network interfaces is operable to utilize one or more physical devices;
- a first computer readable storage medium storing a set of firewall rules, wherein the set of firewall rules is dynamically self-configurable during runtime without operator interaction, wherein the set of firewall rules comprises a plurality of chains of rules forming various paths through a hierarchical structure, and wherein the hierarchical structure comprises defined places for dynamically updating the set of firewall rules during runtime without operator interaction;
- a data controlling computer program comprising data controlling computer program code stored on either the first computer readable storage medium or on a second computer readable storage medium, the data controlling computer program code being executable to:
 - define at least one node, wherein the at least one node is associated with two or more network interfaces of the plurality of network interfaces; and

14

when a packet is received at one of the two or more network interfaces associated with the at least one node, accept or deny the packet based on a review of the set of firewall rules.

13. A device according to claim 12, wherein the data controlling computer program code is further executable to, while the firewall is processing traffic through the at least one node, add a rule to the set of firewall rules, delete a rule from the set of firewall rules, or modify a rule in the set of firewall rules.

14. A device according to claim 12, wherein the at least one node comprises a first node, and wherein the data controlling computer program code is further executable to:

- associate a first subset of the set of firewall rules with the first node; and
- if the packet is received at the first node, apply the first subset of the set of firewall rules associated with the first node.

15. A device according to claim 14, wherein the at least one node further comprises at least two nodes including a second node, and wherein the data controlling computer program code is further executable to:

- associate a second subset of the set of firewall rules with the second node; and
- if the packet is received at the second node, apply the second subset of the set of firewall rules associated with the second node.

16. A device according to claim 15, wherein the first subset of the set of firewall rules is the same as or different from the second subset of the set of firewall rules.

17. A device according to claim 15, wherein either the first subset of the set of firewall rules or the second subset of the set of firewall rules equals the entire set of firewall rules.

18. A device according to claim 12, wherein the data controlling computer program code is further executable to condition the packet based on the set of firewall rules.

19. A device according to claim 18, wherein conditioning the packet based on the set of firewall rules further comprises rewriting a portion of a network packet header associated with the packet.

20. A device according to claim 12, wherein each of the at least one node is associated with at least two network interfaces.

21. A device according to claim 12, wherein each of the plurality of network interfaces is connected with at least one physical device.

22. A device according to claim 12, wherein each of the plurality of network interfaces is physically connected to every other network interface of the plurality of network interfaces and

- wherein physical connection between the plurality of network interfaces comprises indirect physical connection between the plurality of network interfaces.

23. A device according to claim 12, wherein the data controlling computer program code is further executable to dynamically update the set of firewall rules during runtime without operator interaction.

24. A data controlling computer program product comprising computer instructions stored on at least one non-transitory computer readable medium, wherein the computer instructions are operable when executed by at least one processor to:

- define at least one node for controlling data through a firewall, wherein at least one of the at least one node is associated with two or more network interfaces;
- associate a set of firewall rules with the at least one node, wherein the set of firewall rules further comprises a

15

plurality of chains of rules forming various paths through a hierarchical structure, and wherein the hierarchical structure comprises defined places for dynamically updating the set of firewall rules during runtime without operator interaction;

receive a packet at a first node of the at least one node; and accept or deny the packet based on a review of the set of firewall rules, wherein the set of firewall rules is dynamically self-configurable during runtime without operator interaction.

25. A data controlling computer program product according to claim 24, wherein the computer instructions are further executable to dynamically update the set of firewall rules during runtime without operator interaction.

26. A data controlling computer program product according to claim 25, wherein the computer instructions are further executable to, while the firewall is processing traffic through the at least one node, add a rule to the set of firewall rules, delete a rule from the set of firewall rules, or modify a rule in the set of firewall rules.

27. A data controlling computer program product according to claim 26, wherein the computer instructions are further executable to:

associate a first subset of the set of firewall rules with the first node; and

if the packet is received at the first node, apply the first subset of the set of firewall rules associated with the first node.

28. A data controlling computer program product according to claim 27, wherein the at least one node further comprises at least two nodes including a second node, and wherein the computer instructions are further executable to: associate a second subset of the set of firewall rules with the second node; and

16

if the packet is received at the second node, apply the second subset of the set of firewall rules associated with the second node.

29. A data controlling computer program product according to claim 28, wherein the first subset of the set of firewall rules is the same as or different from the second subset of the set of firewall rules.

30. A data controlling computer program product according to claim 28, wherein either the first subset of the set of firewall rules or the second subset of the set of firewall rules equals the entire set of firewall rules.

31. A data controlling computer program product according to claim 24, wherein the computer instructions are further executable to condition the packet based on the set of firewall rules.

32. A data controlling computer program product according to claim 31, wherein conditioning the packet based on the set of firewall rules further comprises rewriting a portion of a network packet header associated with the packet.

33. A data controlling computer program product according to claim 24, wherein each of the at least one node comprises at least two network interfaces.

34. A data controlling computer program product according to claim 24, wherein each of the two or more network interfaces is connected with at least one physical device.

35. A data controlling computer program product according to claim 24, wherein each of the two or more network interfaces is physically connected to every other network interface of the two or more network interfaces and wherein physical connection between the two or more network interfaces comprises indirect physical connection between the two or more network interfaces.

* * * * *