

EX 1005



(19) **United States**

(12) **Patent Application Publication**

**Ke et al.**

(10) **Pub. No.: US 2003/0041266 A1**

(43) **Pub. Date: Feb. 27, 2003**

(54) **INTERNET SECURITY SYSTEM**

**Publication Classification**

(76) Inventors: **Yan Ke**, San Jose, CA (US); **Yuming Mao**, Milpitas, CA (US); **Wilson Xu**, Cupertino, CA (US); **Brian Yeon-Shiang Leu**, San Jose, CA (US)

(51) **Int. Cl.<sup>7</sup>** ..... **H04L 9/00**  
(52) **U.S. Cl.** ..... **713/201**

Correspondence Address:  
**MARK D. KIRKLAND**  
**Fish & Richardson P.C.**  
**Suite 100**  
**2200 Sand Hill Road**  
**Menlo Park, CA 94025 (US)**

(57) **ABSTRACT**

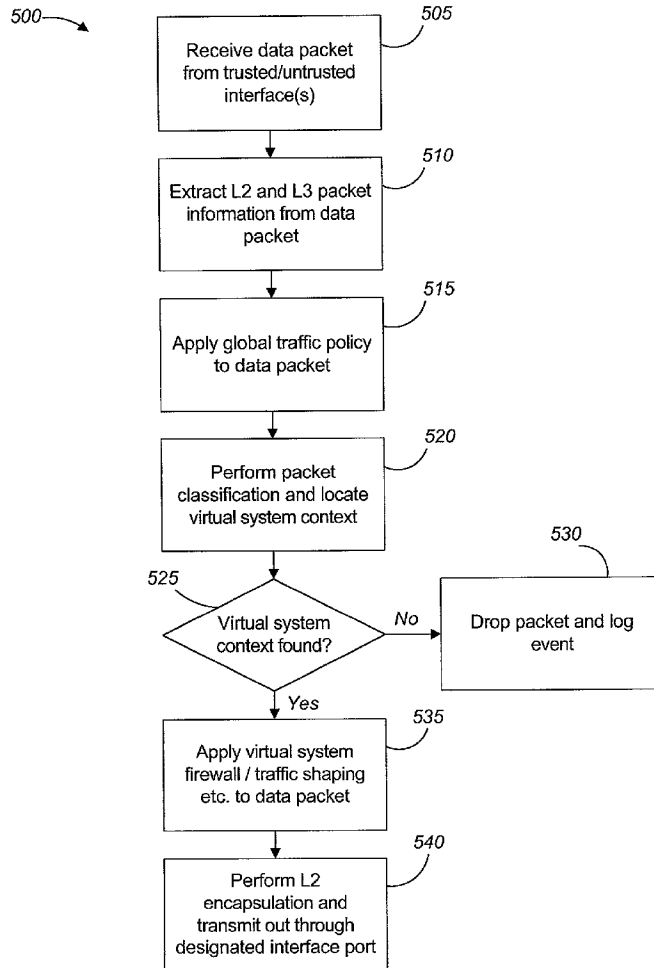
Methods and apparatus, including computer program products, implementing and using techniques for processing a data packet in a packet forwarding device. A data packet is received. A virtual local area network destination is determined for the received data packet, and a set of rules associated with the virtual local area network destination is identified. The rules are applied to the data packet. If a virtual local area network destination has been determined for the received data packet, the data packet is output to the destination, using the result from the application of the rules. If no destination has been determined, the data packet is dropped. A security system for partitioning security system resources into a plurality of separate security domains that are configurable to enforce one or more policies and to allocate security system resources to the one or more security domains, is also described.

(21) Appl. No.: **09/967,893**

(22) Filed: **Sep. 27, 2001**

**Related U.S. Application Data**

(60) Provisional application No. 60/280,684, filed on Mar. 30, 2001.





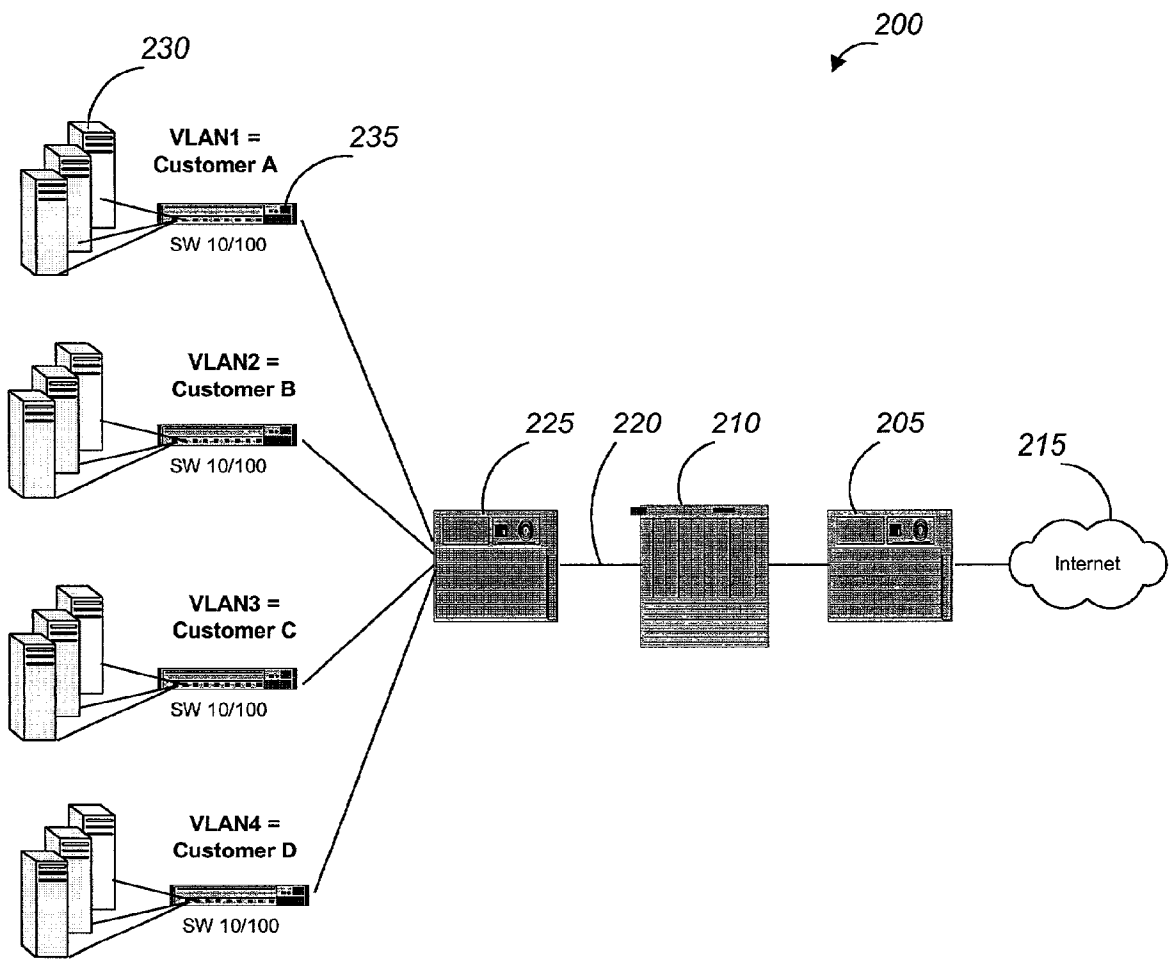


FIG. 2

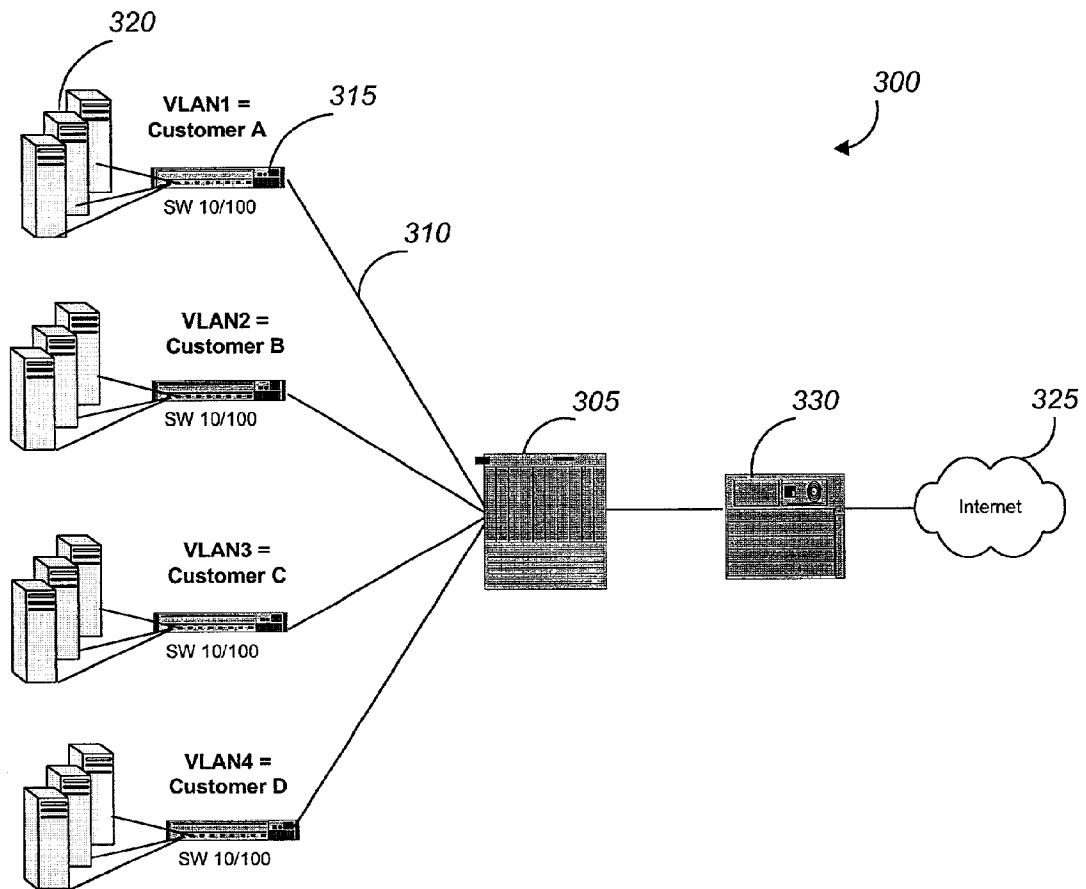


FIG. 3

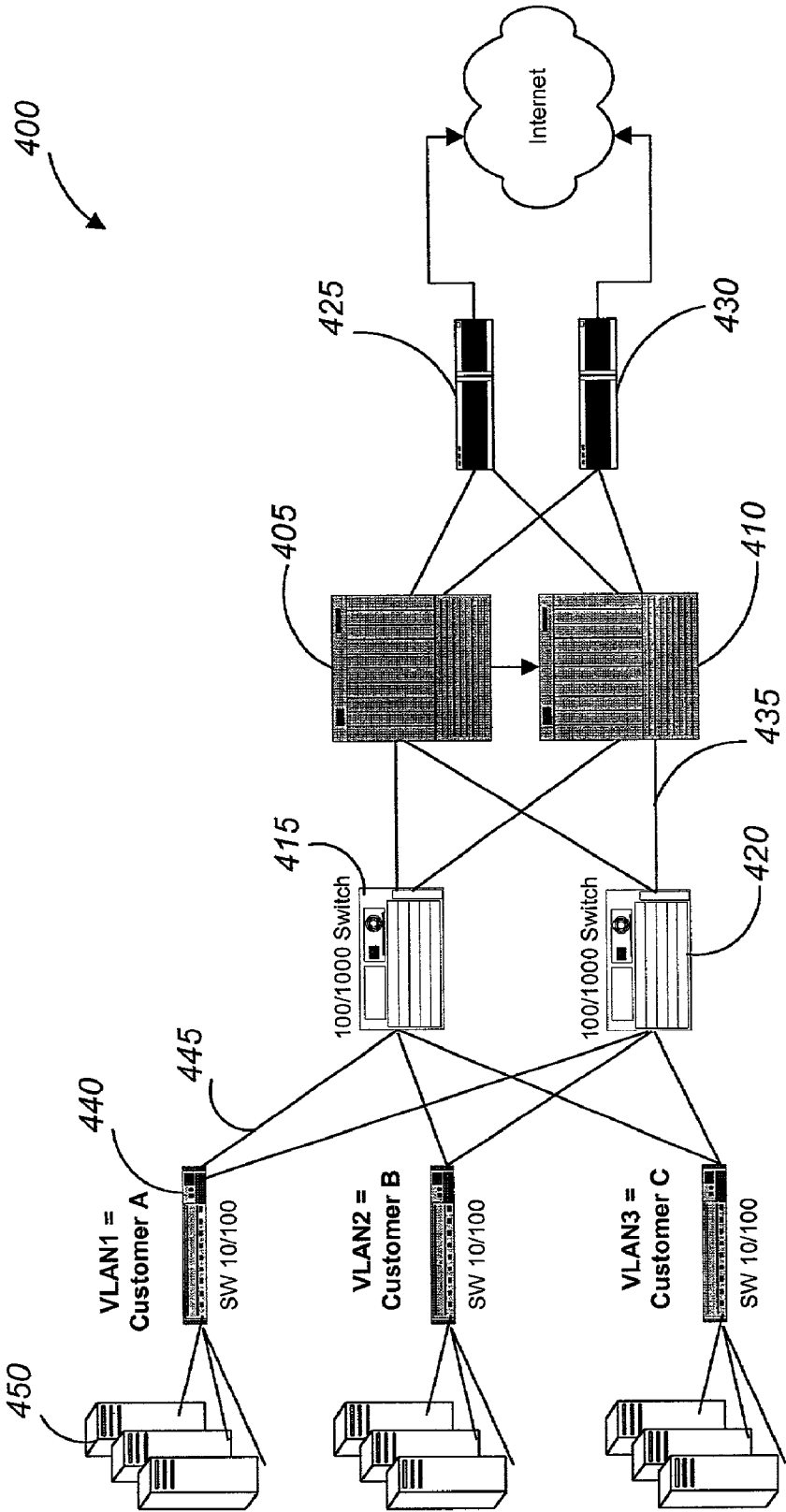


FIG. 4

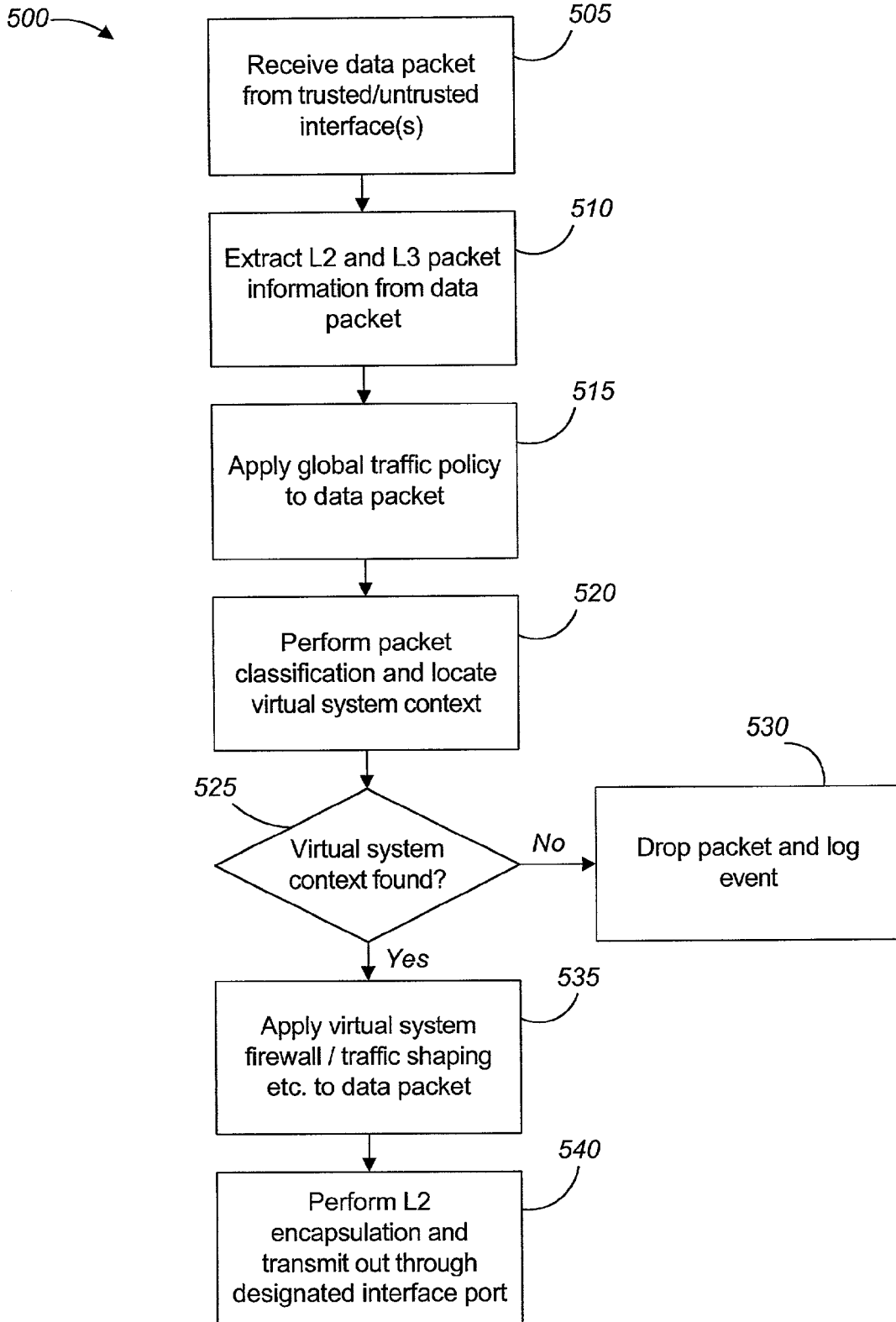


FIG. 5

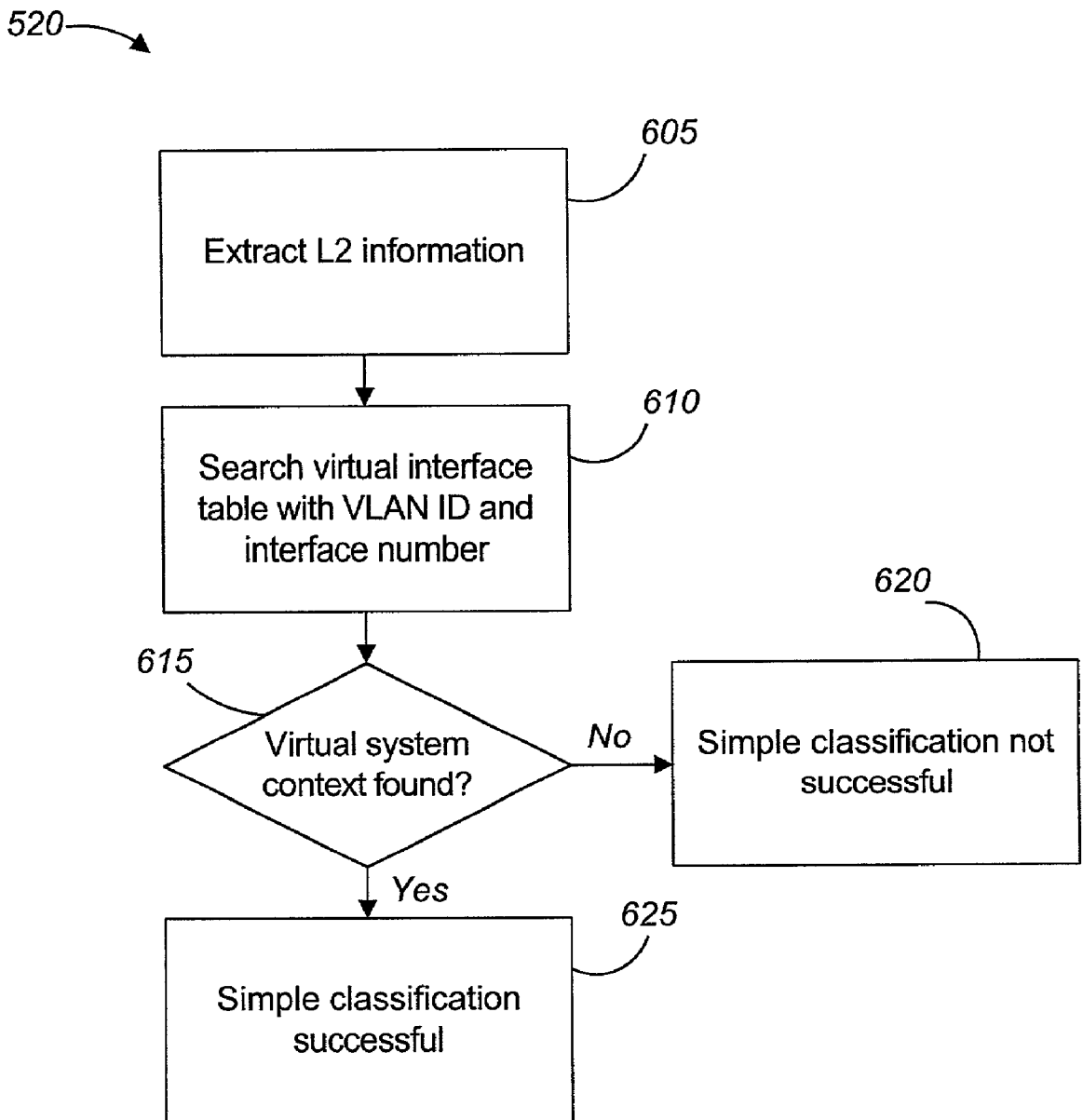


FIG. 6

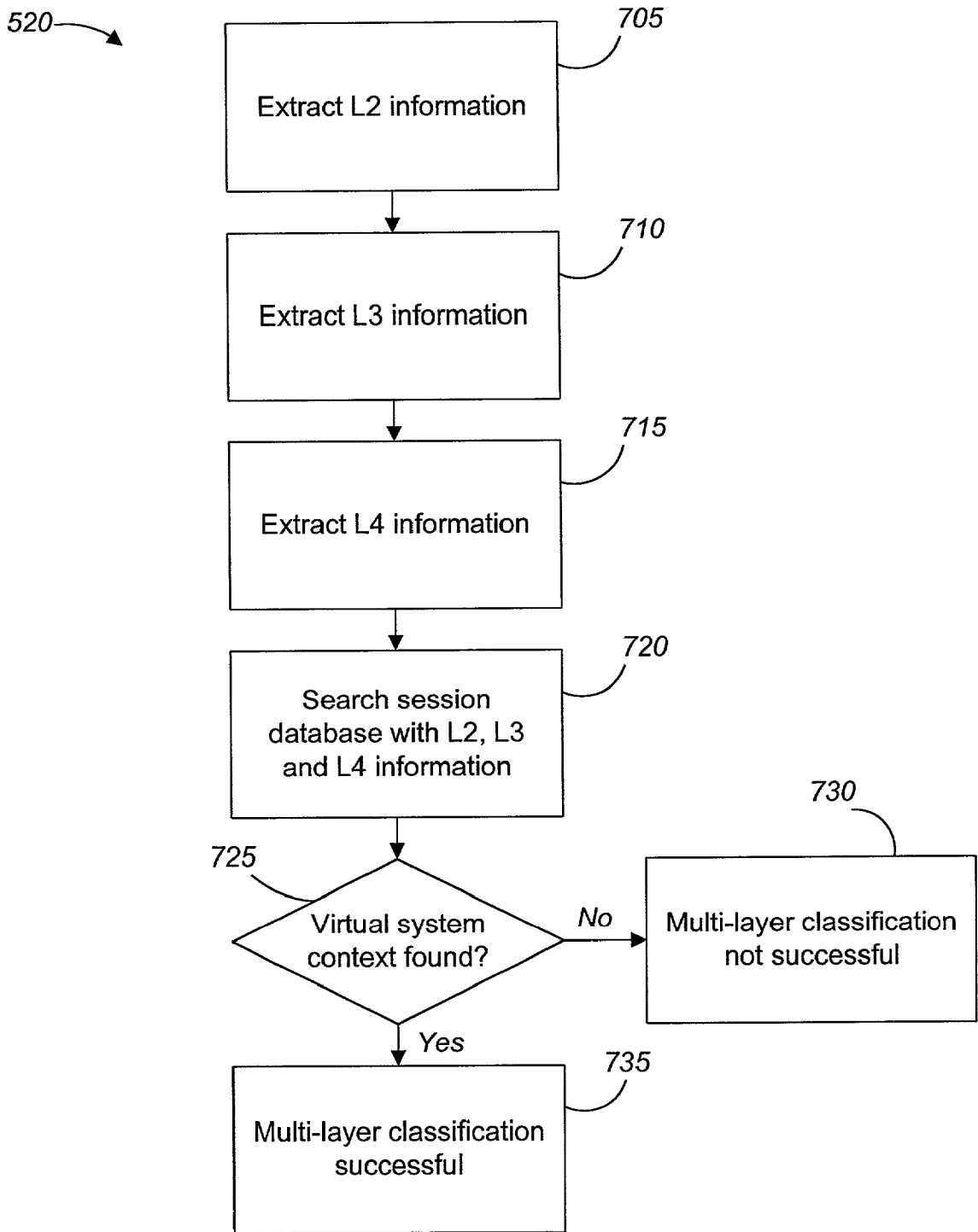


FIG. 7

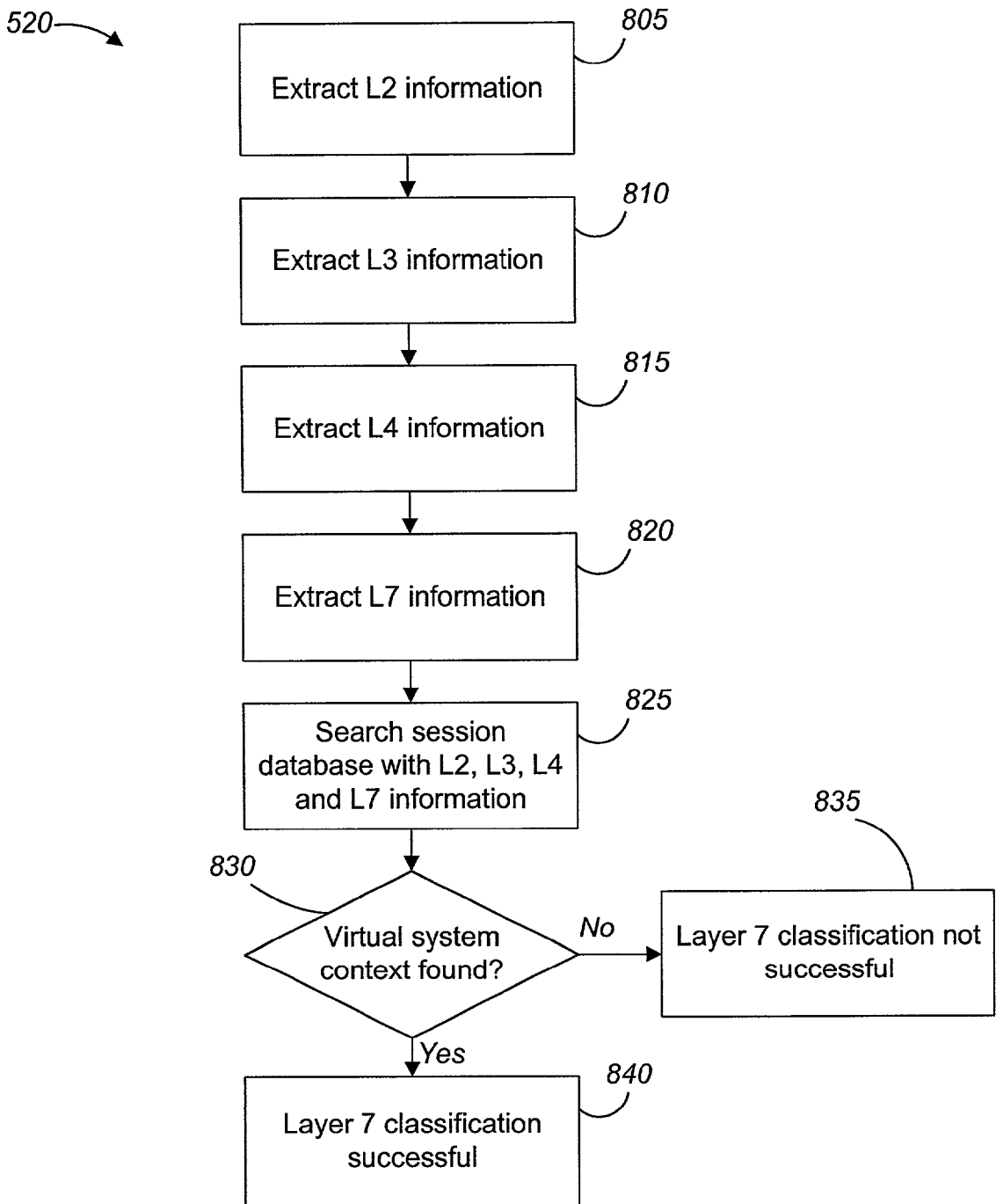


FIG. 8

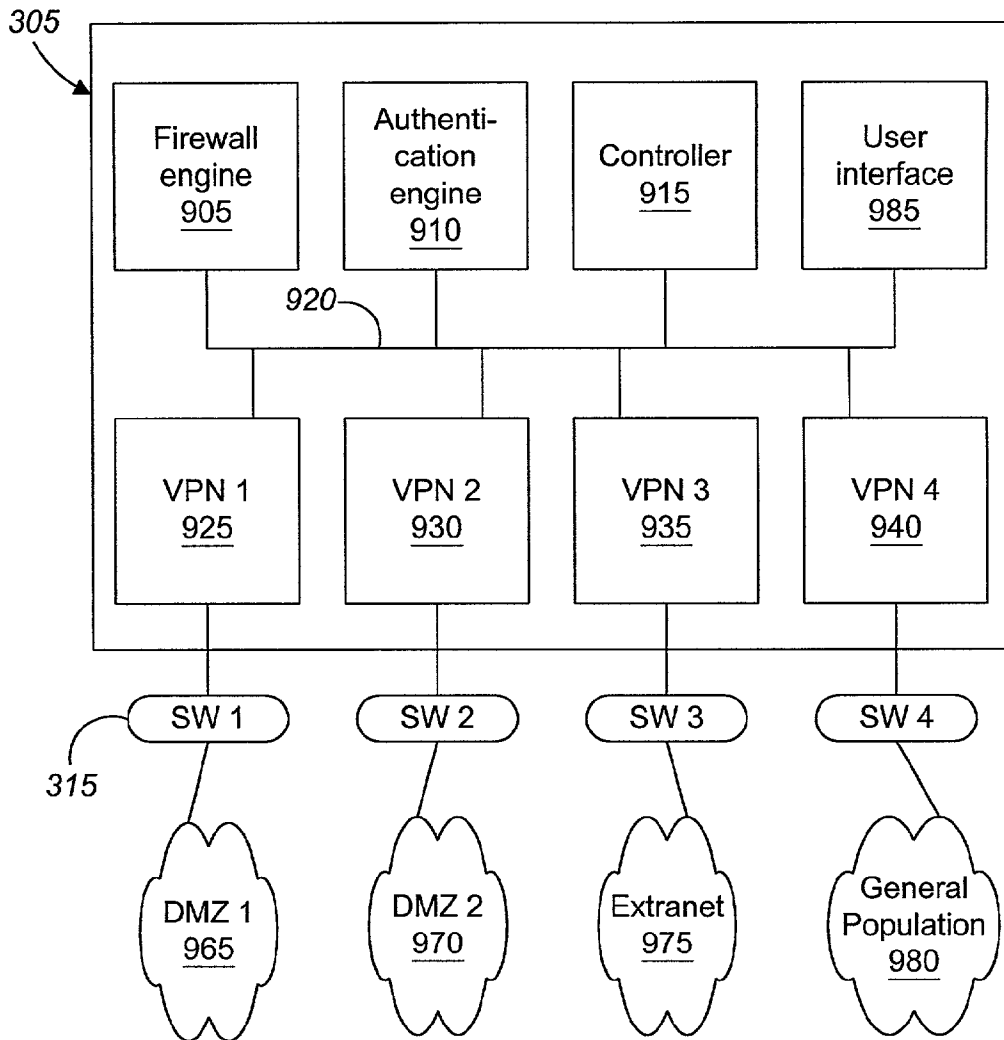


FIG. 9

**INTERNET SECURITY SYSTEM****CROSS-REFERENCE TO RELATED APPLICATIONS**

[0001] This application claims the benefit of prior U.S. provisional application No. 60/280,684, filed Mar. 30, 2001.

**BACKGROUND**

[0002] The invention relates to an Internet security system. The growth of the Internet and high-traffic web sites that require high performance and high bandwidth networks have resulted in an increased number of so-called service providers, including Internet data centers, application service and security service providers. A service provider, including an Internet data center, provides network resources, one or more dedicated servers and, in some cases, physical space, to host services for a number of customers, usually for a fee. Conventionally, service providers must install and configure one or more dedicated servers to support each customer and will likely require complex networks to manage separate services for the service provider's customer base. In this environment, the customer typically has some administrative control of the servers and control of the content residing on the servers. An Internet data center typically provides the network, network access, hardware, software and infrastructure needed to power the service, including web site, managed security, and so on.

[0003] An exemplary view of the organization of a conventional Internet data center is shown in **FIG. 1**. In the present example, the Internet data center (**100**) has a number of customers A, B, C, D. The Internet data center (**100**) shown in **FIG. 1** is set up for four customers only, while in reality a data center may host hundreds or potentially thousands of users. Each customer has one or more dedicated servers (**105**), a dedicated firewall (**110**) and one or more switches (**115**) that are all connected and form a subnet (**120**) for that particular customer. The subnets (**120**) are coupled together in the core switch fabric (**125**), which in turn forms an interface to the Internet.

[0004] The conventional model for organizing an Internet data center requires that a separate firewall device be deployed every time a new customer joins the Internet data center, which may require network re-configuration, and be a labor intensive and costly task. In this environment, the staff at the Internet data center must separately configure, upgrade, manage and support each firewall device separately. The conventional way for organizing Internet data centers also requires a heavy need for physical rack space to accommodate the physical installation of separate firewall and other networking devices upon which the provider's services are hosted. As a result of the large amount of separate equipment, the wiring and related switching and routing infrastructure becomes complex. If a firewall fails, it will be costly to repair or replace and the down time the client experiences before his or her firewall has been repaired or replaced may be considerable. The down time can be reduced if redundant boxes are provided, but this solution leads in turn to increased cost, space, maintenance and wiring problems, and is therefore not a desirable solution.

**SUMMARY**

[0005] In general, in one aspect, this invention provides methods and apparatus, including computer program products, implementing and using techniques for processing data packets transferred over a network. The data processing system includes a firewall engine that can receive a set of firewall policies and apply the firewall policies to a data packet, an authentication engine that can receive a set of authentication policies and authenticate a data packet in accordance with the authentication policies, one or more virtual private networks that each have an associated destination address and policies and a controller that can detect an incoming data packet, examine the incoming data packet for a virtual private network destination address and identify the policies associated with the virtual private network destination. If the policies include firewall policies, then the controller can call the firewall engine and apply the set of firewall policies corresponding to the virtual private network destination to the data packet. If the policies include authentication policies, then the controller can call the authentication engine and apply the set of authentication policies corresponding to the virtual private network destination to the data packet. The controller can also route the data packet to the virtual private network containing the data packet's destination address.

[0006] Advantageous implementations can include one or more of the following features. The controller can route the data packet by reading a set of entries in a private routing table and outputting the data packet to its virtual private network destination address using a routing protocol associated with the packet's virtual private network destination address.

[0007] In general, in one aspect, this invention provides methods and apparatus, including computer program products, implementing and using techniques for processing a data packet in a packet forwarding device. A data packet is received and a virtual local area network destination is determined for the received data packet, including identifying a set of rules that are associated with the virtual local area network destination. The set of rules is applied to the data packet and if a virtual local area network destination has been determined for the received data packet, the data packet is output to its virtual local area network destination, using the result from the application of the rules. If a virtual local area network destination has not been determined for the received data packet, the data packet is dropped.

[0008] Advantageous implementations can include one or more of the following features. A traffic policy can be applied to the received data packet, the traffic policy being associated with the packet forwarding device and applied to all data packets processed by the packet forwarding device. Determining a virtual local area network destination can include extracting layer information from the data packet and using the extracted layer information to determine a virtual local area network destination for the data packet. The layer information can include layer 2 information, layer 3 information, layer 4 information and layer 7 information. Applying the rules to the data packet can include shaping the data packet based on the virtual local area network destination and discarding the data packet if no virtual local area network destination is determined. Shaping the data packet can include attaching a digital address tag to the data packet,

the digital address tag identifying a virtual local area network destination. The digital address tag can be read and the data packet can be output using the digital address tag content.

[0009] Applying the rules to the data packet can include applying a set of rules selected from network address translation, mobile internet protocol, virtual internet protocol, user authentication and URL blocking. Applying the rules to the data packet can include applying a set of policies selected from incoming policies and outgoing policies for a virtual local area network destination. Entries from one or more of a global address book, a private address book, and a global service book can be received and applying the rules to the data packet can include using the retrieved entries.

[0010] Available resources for outputting the data packet to the virtual private network destination can be determined, wherein the resources are definable by a user. Outputting the data packet can include outputting the data packet to a determined virtual private network destination in accordance with the determined available resources. Applying the rules to the data packet can include applying a set of virtual tunneling rules for a virtual local area network destination, where the tunneling rules are selected from PPTP, L2TP and IPSec tunneling protocols. Outputting the data packet can include reading a set of entries in a private routing table and if a virtual local area network destination has been determined for the received data packet, outputting the data packet to its virtual local area network destination using a routing protocol for the packet virtual local area network destination. A set of rules configured by a user can be received.

[0011] In general, in one aspect, this invention provides methods and apparatus, including computer program products, implementing and using techniques for screening data packets transferred over a network. A connection to one or more virtual local area networks is established. A set of firewall configuration settings are associated with each of the one or more virtual local area networks. An incoming data packet is received. The incoming data packet is screened in accordance with a set of firewall configuration settings and the screened data packet is output to a particular virtual local area network among the one or more virtual local area networks, based on the result of the screening.

[0012] In general, in one aspect, this invention provides methods and apparatus, including computer program products, implementing and using techniques for transferring packets of data. One or more packet processing engines can receive an incoming packet of data, apply a global traffic policy to the incoming packet, classify the incoming packet including determining a virtual local area network destination, shape the incoming packet based on the virtual local area network destination and output the shaped packet.

[0013] Advantageous implementations can include one or more of the following features. One or more switches can be connected to the packet processing engine by a trunk cable to receive the shaped packet from the packet processing engine through the trunk cable, determine a destination device to which the shaped packet is to be routed and switch the shaped packet to a communication link that is connected to the destination device. The trunk cable can be a VLAN cable. A first packet processing engine of the one or more packet processing engines can be connected to a first switch

of the one or more switches, and cross connected to at least a second switch of the one or more switches and a second packet processing engine of the one or more packet processing engines can be connected to the second switch of the one or more switches and cross connected to at least the first switch of the one or more switches.

[0014] Each of the first and second switches can connect to one or more communication links, each communication link representing a virtual local area network destination. A trunk cable can connect a switch and a packet processing engine. One or more virtual local area networks (VLANs) can be connected to the one or more switches via a communication link dedicated for the virtual local area network. Outputting the packet can include outputting the shaped packet to its virtual local area network destination through a destination port on the packet processing engine, the destination port connecting the packet processing engine via a communication link to a destination device.

[0015] One or more virtual local area networks (VLANs) can be connected to a destination port on the packet processing engine via a communication link dedicated for the virtual local area network. Each packet processing engine can perform one or more functions that are configurable for each virtual local area network.

[0016] In general, in one aspect, this invention provides methods and apparatus, including computer program products, implementing and using techniques for providing a security system including security system resources including firewall services and a controller that can partition the security system resources into a plurality of separate security domains. Each security domain can be configurable to enforce one or more policies relating to a specific subsystem, and to allocate security system resources to the one or more security domains.

[0017] Advantageous implementations can include one or more of the following features. The security system can allocate security system resources to a specific subsystem. The specific subsystem can be a computer network. The specific subsystem can be a device connected to a computer network. Each security domain can include a user interface for viewing and modifying a set of policies relating to a specific subsystem. The security system resources can include authentication services. The security system resources can include virtual private network (VPN) services. The security system resources can include traffic management services. The security system resources can include encryption services. The security system resources can include one or more of administrative tools, logging, counting, alarming and notification facilities, and resources for setting up additional subsystems.

[0018] A management device can provide a service domain, the service domain being configurable to enforce one or more policies for all security domains. The management device can include a user interface for viewing, adding and modifying any set of policies associated with any specific subsystem and the set of policies associated with the service domain. The service domain can include a global address book. Each set of security domain policies can include one or more policies for incoming data packets, policies for outgoing packets, policies for virtual tunneling, authentication policies, traffic regulating policies and firewall policies. The policies for virtual tunneling can be

selected from the group consisting of PPTP, L2TP and IPSec tunneling protocols. One or more of the security domains can include a unique address book.

[0019] The invention can be implemented to realize one or more of the following advantages. A single security device can be used to manage security for multiple customers. Each customer has their own unique security domain with an address book and policies for management of content. Each domain is separately administrated. One customer's policies do not interfere with the other customers' policies. Additionally, attacks on one customer's domain will not have any influence on the functionality of other domains. To each customer, the firewall and any virtual private networks (VPNs) appear to be hosted on a discrete device, just like the conventional systems. For an Internet data center that employs the Internet security system in accordance with the invention, a number of benefits may result. Instead of upgrading and managing one device for each customer, a single device can be upgraded and managed for several customers. Less rack space will be required, since fewer devices are necessary, and as a consequence, the wiring scheme will be less complicated. The cost of deployment will be lower, the network complexity and requirements will be reduced, and higher performance throughput will be possible.

[0020] The details of one or more embodiments of the invention are set forth in the accompanying drawings and the description below. Other features and advantages of the invention will become apparent from the description, the drawings, and the claims.

#### DESCRIPTION OF DRAWINGS

[0021] FIG. 1 is a schematic view of a prior art security system configuration for an Internet data center.

[0022] FIG. 2 is a schematic view of an Internet security system in accordance with the invention.

[0023] FIG. 3 is a schematic view of an Internet security system in accordance with an alternative implementation of the invention.

[0024] FIG. 4 is a schematic view of an Internet security system in accordance with another alternative implementation of the invention.

[0025] FIG. 5 is a flowchart showing a data packet processing method in accordance with the invention.

[0026] FIG. 6 is a flowchart detailing one implementation of the packet classification step in FIG. 5.

[0027] FIG. 7 is a flowchart detailing one implementation of the packet classification step in FIG. 5.

[0028] FIG. 8 is a flowchart detailing an alternative implementation of the packet classification step in FIG. 5.

[0029] FIG. 9 is a schematic block diagram showing a more detailed view of the security device in FIG. 3.

[0030] Like reference symbols in the various drawings indicate like elements.

#### DETAILED DESCRIPTION

[0031] An Internet security system in accordance with the invention provides a multi-customer, multi-domain architecture that allows service providers, such as Internet data centers, application infrastructure providers and metropolitan area network providers to manage the security needs of multiple customers through one centralized system. The inventive Internet security system also allows service provider and end user customers to create and manage separate security domains, each domain acting as a stand alone system and having its own set of policies. The inventive Internet security system accomplishes this through unique architecture and software features that can be referred to as Virtual Systems. The Internet security system will be described by way of example. Three different exemplary architectures will be described with reference to FIGS. 2-4. After the architectural system description of each implementation, the data flow through the system will be described. Finally, the user interface and a number of customizable functions of the Internet security system will be presented.

[0032] Internet Security System Using Virtual Local Area Networks

[0033] As shown in FIG. 2, the Internet security system (200) in accordance with one implementation of the invention includes a first 100/1000 router switch (205) that connects a firewall device (210) to the Internet (215). The firewall device (210) acts as a common firewall for all the customers, and can be separately configured to fit each customer's policies and security needs. How the separate configurations are done will be explained in further detail below. On the secure side of the firewall device (210) is a Virtual Local Area Network (VLAN) trunk (220) that carries all packets to a second 100/1000 switch (225). A VLAN is a Layer 2 multiplexing technique that allows several streams of data to share the same physical medium, such as a trunk cable, while enjoying total segregation. The second switch (225) directs the packets on private links to the different customers' servers (230) through a 10/100 switch (235) for each customer.

[0034] An incoming data packet from the Internet (215) first passes the router switch (205) and enters the firewall device (210). The firewall device (210) determines what VLAN the packet is intended for and attaches a VLAN tag to the packet. In one implementation, the tag that is used is a 802.1Q tag. The 802.1Q VLAN tag requires 12 bits in the Ethernet packet header to hold the tag, and is defined in the 802.3ac Ethernet frame format standard ratified in 1998. The 802.3ac Ethernet frame format standard is supported by most backbone switches fabricated since the ratification of the standard. There are two ways to attach a tag to a data packet; implicit tagging and explicit tagging. The implicit tagging method assigns a tag to untagged data packets, typically based on which port the data packet came from. The implicit tagging method allows traffic coming from devices not supporting VLAN tagging to be implicitly mapped into different VLANs. The explicit tagging method requires that each data packet be tagged with the VLAN to which the data packet belongs. The explicit tagging method allows traffic coming from VLAN-aware devices to explicitly signal VLAN membership.

[0035] The packet then continues on VLAN trunk (220) to the VLAN switch (225), where the tag attached to the packet

by the firewall device (210) is read. Based on the VLAN tag, the packet is routed by the VLAN switch (225) to the appropriate switch (235) and server (230). The operation of the firewall device (210) will be described in more detail below.

[0036] Internet Security System Using Port-Based Virtual Local Area Networks

[0037] Another implementation of the invention is shown in FIG. 3, which shows essentially the same architecture as shown for the Internet security system in FIG. 2. The difference is that the firewall device (210) has been replaced with a firewall device (305) with port-based VLAN. From each port in the firewall with the port based VLAN, there is a private link (310) to each customer, switch (315) and server (320). The system (300) does not include the VLAN trunk or the second 100/1000 switch of the Internet security system implementation shown in FIG. 2.

[0038] An incoming data packet from the Internet (325) first passes the router switch (330) and enters the firewall device (305). The firewall device (305) determines what system the packet is intended for. Instead of attaching a VLAN tag to the packet, the firewall device directs the packet to the proper dedicated port for the VLAN. The packet then continues on the selected private link (310) to the switch (315) and server (320) for the selected VLAN.

[0039] FIG. 9 shows a more detailed view of the Internet security system of FIG. 3, and in particular of the firewall device (305). The firewall device (305) includes functionality not conventionally included in a firewall and can therefore be referred to more generally as a security system or a data processing system. The security system has a number of engines, such as a firewall engine (905), an authentication engine (910), and optionally other engines. A user interface (985) is also provided in the security system, which allows a user to set different policies for the different engines. The different engines communicate with each other through a bus (920). A user can set firewall policies for the firewall, such as incoming policies and outgoing policies for a virtual local area network destination, and authentication policies for the authentication engine, such as network address translation, mobile Internet protocol, virtual Internet protocol, user authentication and URL blocking.

[0040] When a packet comes in, a controller (915) detects the packet. The controller is connected to the bus (920) and can communicate with the engines. Also connected to the bus (920) is a set of virtual private networks (925-940), that each are connected to a network, optionally through one or more switches (315). The exemplary networks shown in FIG. 9 include two DMZs (Demilitarized Zones) (965,970), an extranet (975) and a general population net (980). Each of the virtual private networks (VPNs), has an associated destination address and policies. After the packet has been detected by the controller (915), the controller (915) examines the data packet for a virtual private network destination address and identifies the policies that are associated with the virtual private network destination. If the policies include firewall policies, the controller (915) calls the firewall engine (905), which applies the set of firewall policies corresponding to the virtual private network destination to the data packet. If the policies include authentication policies, the controller (915) calls the authentication engine (910), which applies the set of authentication policies cor-

responding to the virtual private network destination to the data packet. After the respective engine has applied the policies, the data packet is routed to the virtual private network corresponding to the data packet's destination address. How the incoming data packet is examined will be described in greater detail below.

[0041] The security system as a whole thus has a finite amount of security system resources, including firewall and authentication services. The controller partitions the security system resources into a number of separate security domains, each security domain being related to a private or public network. Each security domain is configurable to enforce one or more policies relating to a specific subsystem or network. The controller allocates security system resources to the one or more security domains based on the needs of the respective security domain, by calling the different engines, as described above. Instead of the static resource allocation in conventional Internet security systems with one security device or firewall per client, as was described in the background section above, the inventive Internet security system provides dynamic resource allocation on a as needed basis for the different virtual private networks and associated systems.

[0042] The security system resources can include a wide range of resources, such as authentication services, virtual private network (VPN) services, include traffic management services, encryption services, administrative tools, logging, counting, alarming and notification facilities, and resources for setting up additional subsystems.

[0043] Internet Security System Using Virtual Local Area Networks with High Availability

[0044] Yet another implementation of the invention is shown in FIG. 4, which shows an Internet security system architecture (400) similar to that shown in FIG. 2. However, in order to provide the ability to accommodate more traffic and to provide higher availability in the event of equipment failure, the system provides dual firewalls (405, 410) and dual second switches (415, 420). The first switches have been replaced with switch/routers (425,430) that can direct incoming traffic to either firewall (405, 410). Each firewall is connected to both second switches (415, 420) through VLAN trunks (435), and each of the second switches is connected to all the customer switches (440) by private links (445). The cross connection scheme ensures that an alternate route for data packages will be available, even in the event of component failure, and a high availability is thereby ensured.

[0045] An incoming data packet from the Internet arrives at one of the router switches (425, 430). The router switch decides what firewall device (405, 410) to send the packet to, based on which firewall device currently has most available capacity and sends the packet to that firewall device. Just like the above-described implementation shown in FIG. 2, the firewall device (405, 410) determines what VLAN the packet is intended for, and attaches a VLAN tag to the packet. The packet then continues on VLAN trunk (435) to the VLAN switch (415,420) with the most available capacity, where the tag attached to the packet by the firewall device (405, 410) is read. Based on the VLAN tag, the packet is routed by the VLAN switch (415,420) through a private link (445) to the appropriate switch (440) and server (450).

**[0046]** Packet Classification and Context Partition

**[0047]** The following example describes a process for classifying and sending out an incoming packet to the appropriate virtual system using the firewall device in the Internet security system in accordance with the invention. As shown in **FIG. 5**, a process **(500)** for classifying and sending out an incoming data packet begins with receiving a data packet **(505)**. In the present example, the data packet is assumed to come from a trusted host. Data packets that are received from an untrusted host will be treated somewhat differently, which will be described below.

**[0048]** Once the data packet has been received, the layer 2 (L2) information and the layer 3 (L3) information is extracted from the packet **(510)**. The L2 information includes: Interface Number and VLAN ID. The L3 information includes IP head or information.

**[0049]** After the L2 and L3 information has been extracted, one or more global traffic policies are applied to the packet **(515)**. The global traffic policies apply to all virtual system domains in the Internet security system.

**[0050]** When the global traffic policies have been applied, the packet goes through a classification **(520)** to find a Virtual System Context. The virtual system context is an object containing all the configuration parameters for the virtual system to which the packet is destined. The packet classification is based a combination of the interface, VLAN ID and/or L3/L4 (that is, TCP/UDP port) information. In a simple configuration, Interface and VLAN ID will be sufficient, while in a more complicated configuration, all the information listed above is necessary to locate the right context. The packet classification step is essential for the method and will be described in further detail below after the overall data packet processing procedure has been described.

**[0051]** The procedure then checks if a virtual system context has been found **(525)**. If no virtual system context can be found, the packet is dropped and the event is logged **(530)**. If a virtual system context has been found, the packet will be subjected to firewall/VPN/traffic shaping processing **(535)**, in the same way as the packet would be processed on a stand-alone device. After the firewall/VPN/traffic shaping processing the procedure transforms the packet into an egress packet, and the L2 information is encapsulated **(540)** before the packet is transmitted out through a designated interface port to the proper Virtual private network, which completes the procedure.

**[0052]** If the incoming packet comes from an untrusted interface, the processing is somewhat different than when the packet originates at a trusted interface. The different processing is necessary because an untrusted interface may be shared among several virtual systems. Therefore, the packet classification step **(520)** will, optionally, use more information, such as tunnel identifications for protocols such as IPSEC, L2TP. When a tunnel has been identified, the virtual system context can be identified, and the packet can pass to the Firewall/VPN/Traffic shaping step **(535)**.

**[0053]** For non-tunnel traffic, a policy-based and session-based look-up table may be used to identify a virtual system context for the traffic from an untrusted interface. In the packet classification step **(520)**, the packet will be subject to a global policy in order to identify if there is a session

anywhere in the whole security system that matches with the packet. If such a session exists, the context point in the session record informs the security system about which virtual system context is the correct one. If there is no session match, but there is a policy that matches the packet, then that policy will point to the proper virtual system context for continued processing.

**[0054]** The classification step **(520)** described above determines to which virtual system the incoming data packet is destined. The classification step **(520)** will now be described in more detail with reference to **FIGS. 6-8** that show in greater what happens to the data packet during the classification. Conceptually, the Internet security system in accordance with the invention can be viewed as processes in an operating system, the primary difference being that processes in an operating system are event driven, while the Internet security system is packet driven. When the Internet security system receives an incoming data packet, the system needs to classify the packet based on information contained in the packet and on the policies that have been configured for the system. When the packet has been classified, the virtual system context to which the packet belongs is found, and the packet is passed to the associated virtual system context for further processing. From the point of view of the virtual system, the packet appears to have originated in one of the virtual interfaces configured for the virtual system.

**[0055]** The classification of the incoming packet is made based on information from layer 2 (L2), layer 3 (L3), layer 4 (L4) and layer 7 (L7) information. The classification may be made based on one or more layers. For example, in a simple configuration, a virtual system using VLAN to separate different secure domains, the VLAN ID in the VLAN Ethernet packet is sufficient to classify the packet and identify the destination virtual system context. This is referred to as simple classification. An exemplary process for simple classification is shown in **FIG. 6**, where the L2 information is extracted **(605)**, the virtual interface table is searched with the VLAN ID and the interface number **(610)**. Based on the VLAN ID and the interface number, the process can determine whether a virtual system context has been found **(615)**. If no virtual system context can be found, then the simple classification is not sufficient **(620)**, and if a virtual system context can be found, then the simple classification is sufficient **(625)**.

**[0056]** In an Internet security system with shared outside identity, a session database is used along with L2, L3 and L4 information to identify the correct virtual system. This is referred to as multi-layer classification. A process for multi-layer classification is shown in **FIG. 7**, where the L2 information **(705)**, the L3 information **(710)** and the L4 information is extracted **(715)**, before the session database is searched **(720)**. Based on the L2, L3 and L4 information and the information in the session database, the process can determine whether a virtual system context has been found **(725)**. If no virtual system context can be found, then the multi-layer classification is not sufficient **(730)**, and if a virtual system context can be found, then the multi-layer classification is sufficient **(735)**.

**[0057]** When complicated applications with dynamic port session (such as, FTP, RPC, H.323, and so on) are involved, a dynamic session database, along with L2, L3, L4, and L7

(application layer) information are used to identify the virtual system context. This is referred to as L7 classification. A process for L7 classification is shown in FIG. 8, where the L2 (805), the L3 (810), the L4 (815) and the L7 information is extracted (820) before the dynamic session database is searched (825). Based on the L2, L3, L4, and L7 information and the dynamic session database, the process can determine whether a virtual system context has been found (830). If no virtual system context can be found, then the simple classification is not sufficient (835), and if a virtual system context can be found, then the simple classification is sufficient (840). Each of the simple, multi-layer or L7 classification can be performed by itself, or the processes can be performed in series, going from the simple classification, through the multi-layer classification to the L7 classification until the packet has been classified and a virtual system context has been identified.

[0058] The virtual systems are created through configuration of the Internet security system in real time or at start up with a saved configuration script. A system administrator creates virtual system context under a root privilege, and assigns certain attributes to the context. The system resources are now partitioned to support the new virtual system. A virtual system user can then log in to the system and will only see his or her virtual system, as if the user owned the whole system. A virtual system owner then can

How the Internet security system and individual virtual systems can be configured will be discussed in further detail below.

[0059] Configuring an Internet Security System

[0060] The description will now continue with an example showing how to configure an Internet security system in accordance with the invention, and showing three different examples of the user interfaces: one for a root level configuration, one where a root user creates a virtual system and adds configuration data, and one where a virtual system user logs in to a virtual system and changes configuration data.

[0061] First, a root user (that is, a system administrator for the whole Internet security system) with the user name "Netscreen" logs in to the system by entering the username and a password:

[0062] login: Netscreen

[0063] password:

[0064] ns1000->

[0065] The root user is now logged on and can access the root level interface configuration to view the different user interfaces that are present on the system. The command 'get interface,' for example, yields the following five interfaces, shown in Table 1 below.

TABLE 1

User interfaces present on the Internet Security System					
Name	Stat	IP Address	Subnet Mask	MAC/VLAN/VSYS	Manage IP
Trust	Down	10.1.1.250	255.255.255.0	0010.dbf.1000	0.0.0.0
Trust/1	Down	11.1.1.250	255.255.255.0	Nat/trust.100(100)/ NULL	0.0.0.0
Untrust	Down	192.1.1.250	255.255.255.0	0010.dbf0.1001	
Mgt	Up	0.0.0.0	0.0.0.0	0010.dbf0.1002	192.168.1.1
Ha	Down	0.0.0.0	0.0.0.0	0010.dbf0.1004	192.168.1.1

add, change and remove different attributes on the context. Once submitted, all attributes will be saved as configuration data for the Internet security system and be used to partition resources, change the global classification policy, and so on.

[0066] The root user can view the root level address entry configuration with the command 'get address' which yields the trusted, untrusted, and virtual addresses shown in Table 2 below:

TABLE 2

Trusted, Untrusted, and Virtual Addresses				
Name	Address	Netmask	Flag	Comments
<u>Trusted Individual Addresses:</u>				
Inside Any	0.0.0.0	0.0.0.0	02	All trusted addr.
T11net	11.1.1.0	255.255.255.0	00	
<u>Untrusted Individual addresses:</u>				
Outside Any	0.0.0.0	0.0.0.0	03	All Untrusted Addr
Dial-Up VPN	255.255.255.255	255.255.255.255	03	Dial-Up VPN Addr
u-199net	199.1.1.0	255.255.255.0	01	
<u>Virtual Individual Addresses:</u>				
All Virtual Ips	0.0.0.0	0.0.0.0	12	All Virtual Addr

[0067] The root user can view the Virtual Private Network configuration by typing the command 'get vpn' which yields the virtual private network configuration in Table 3 below. Here, there is only one VPN setting for the system.

[0072] ns1000(marketing)-> set interface trust/200 ip 20.1.1.250 255.255.255.0 tag 200  
 [0073] ns1000(marketing)-> set interface untrust/200 ip 193.1.1.250 255.255.255.0 tag 200

TABLE 3

VPN systems for the Internet Security System					
Name	Gateway	Local SPI	Remote SPI	Algorithm	Monitor
m-t11-u199	192.2.1.250	00001234	00004321	Esp:3des/null	Off

Total manual VPN: 1

[0068] To view the access policy configuration, the root user types the command 'get policy' which yields the three policies shown in Table 4 below for the root system.

[0074] The next configuration to update is to add a virtual system private address entry to the "marketing" system.

TABLE 4

Policies for the root system in the Internet Security System						
PID	Direction	Source	Destination	Service	Action	STLC
0	Outgoing	T-11net	u-199net	Any	Tunnel	—
1	Incoming	U-199net	t-11net	Any	Tunnel	—
2	Inside	Any	Outside	Any	Permit	—

[0075] ns1000(marketing)-> set address trust t-20net 20.1.1.64 255.255.255.128

[0076] The root user then adds a MIP attribute to the private virtual interface, as well as two incoming/outgoing policies.

[0069] The description will now continue with explaining how the root user can create a new virtual system named "marketing" and configure that system. The root user first adds the virtual system "marketing" to the Internet security system.

[0077] ns1000(marketing)-> set interface untrust/200 mip 193.1.1.241 host 20.1.1.40

[0070] ns1000-> set vsys marketing

[0078] ns1000(marketing)-> set policy incoming out-any mip(193.1.1.241) http permit

[0071] The root user then adds configuration data to the newly created system "marketing" by first adding two virtual interfaces for the "marketing" system. Note how the prompt has changed to indicate that the root user is working in the "marketing" system.

[0079] ns1000(marketing)-> set policy outgoing t-20net out-any any permit auth

[0080] Next, the root user can verify the interface configuration settings by typing the command 'get interface'. As shown above, the 'get interface' command yields the virtual interfaces for the current system. Since the current system is the "marketing" system, the root user will only see two virtual interfaces created above, as shown in Table 5 below.

TABLE 5

Virtual interfaces for the "marketing" virtual system					
Name	Stat	IP Address	Subnet Mask	MAC/VLAN/VSYS	Manage IP
Trust/200	Down	20.1.1.250	255.255.255.0	Nat/trust.200(200)/marketing	
Trust/200	Down	193.1.1.250	255.255.255.0	Route/untrust.200(200)/marketing	

[0081] As described above, the root user can see the virtual system address configuration for the "marketing" system by typing the command 'get address,' which yields the address entries shown in Table 6 below.

TABLE 6

Address entries for the "marketing" system				
Name	Address	Netmask	Flag	Comments
Trusted Individual Addresses:				
Inside Any	0.0.0.0	0.0.0.0	02	All trusted addresses
T-20net	20.1.1.64	255.255.255.128	00	

TABLE 6-continued

<u>Address entries for the "marketing" system</u>				
Name	Address	Netmask	Flag	Comments
<u>Untrusted Individual addresses:</u>				
Outside Any	0.0.0.0	0.0.0.0	03	All Untrusted Addresses
Dial-Up VPN	255.255.255.255	255.255.255.255	03	Dial-Up VPN Addresses
<u>Virtual Individual Addresses:</u>				
All Virtual Ips	0.0.0.0	0.0.0.0	12	All Virtual Addresses
MIP	193.1.1.241	255.255.255.255	10	Untrust/200

[0082] The user can now retrieve the policies for the "marketing" system by typing the command 'get policy' at the prompt. The get policy command yields the following two policies for the "marketing" system, shown in Table 7 below.

TABLE 7

<u>Policies for the "marketing" system</u>						
PID	Direction	Source	Destination	Service	Action	STLC
0	Incoming	Outside Any	MIP (193.1.1.124)	HTTP	Permit	—
1	Outgoing	t-20net	Outside Any	Any	Permit-Auth	—

[0083] The configuration file for the "marketing" system virtual system can be obtained by typing 'get config' which yields:

```
[0084] Total Config size 1503:
[0085] set vsys "marketing"
[0086] set vsys-id 1
[0087] set auth type 0
[0088] set auth timeout 10
[0089] set admin name "vsys_marketing"
[0090] set admin password nLxrDlr7BzZBcq/
  LyshENtL9sLGFn
[0091] set interface trust/200 ip 20.1.1.250
  255.255.255.0 tag 200
[0092] set interface untrust/200 ip 193.1.1.250
  255.255.255.0 tag 200
[0093] set interface untrust/200 mip 193.1.1.241 host
  20.1.1.40 netmask 255.255.255.255
[0094] set address trust "t-20 net" 20.1.1.64
  255.255.255.128
[0095] set policy id 0 incoming "Outside
  Any""MIP(193.1.1.241)""HTTP" Permit
[0096] set policy id 1 outgoing "t-20net""Outside
  Any""ANY" Permit Auth
[0097] exit
```

[0098] The root user has now created a virtual system, configured the system, and verified that all the settings are

correct. He or she then exits the marketing system, saves the new configuration and the prompt returns to the root level.

```
[0099] ns1000(marketing)-> exit
[0100] Configuration modified, save?[y]/n y
[0101] Save System Configuration . . . Done
[0102] ns1000>
```

[0103] The current Internet security system settings can now be viewed by the root user by typing 'get vsys', which yields the settings shown in Table 8 below. As can be seen the Internet security system now has a marketing system and a sales system. The marketing system has one sub-interface, while the sales system has a trusted and an untrusted interface.

TABLE 8

<u>Internet security system settings</u>				
Name	ID	Sub-interface	VLAN	IP/Netmask
Marketing	1	Trust/200	Trust.200	20.1.1.250/255.255.255.0
Sales	2	Trust/300	Trust.300	30.1.1.250/255.255.255.0
		Untrust/200	Untrust.200	193.1.1.250/255.255.255.0

[0104] The description will now continue with showing what a user of a virtual system, a "marketing" system, sees and the operations he or she can perform when he logs in to the system. The user logs in with his username and password:

```
[0105] login: vsys_marketing
[0106] password:
[0107] ns1000(marketing)->
```

[0108] To change the policy configuration, the user types 'get policy' which yields the two policies shown in Table 7 above. Now, the user can remove the first policy with the command 'unset policy 1' and add a new policy to the "marketing" system by typing

```
[0109] ns1000(marketing)-> set policy outgoing in-
  any out-any any permit auth
```

[0110] The new policy configuration can be shown by retyping the 'get policy' command, which yields the policies shown in Table 9 below.

TABLE 9

Modified policies for the "marketing" system						
PID	Direction	Source	Destination	Service	Action	STLC
0	Incoming	Outside Any	MIP (193.1.1.124)	HTTP	Permit	—
2	Outgoing	Inside Any	Outside Any	Any	Permit-Auth	—

[0111] The user can then exit the "marketing" system and save the modified policies in the same way as the root user exited:

[0112] ns1000(marketing)-> exit

[0113] Configuration modified, save?[y]/n y

[0114] Save System Configuration . . . Done

[0115] The above examples only showed how to change a few policies and components. In the Internet security system in accordance with the invention, the following components can be independently configured in a similar way to the above example:

[0116] Firewall—The firewall device can be configured for each user to include one or more of the following mechanisms: NAT (Network Address Translation), MIP/VIP (Mapped IP, Virtual IP), User authentication, URL Blocking.

[0117] Policy—A private policy set can be configured that is applied to traffic for a particular customer. The private policy can include both incoming and outgoing policies. The policies can use entries from a global address book, a defined private address book, and a global service book.

[0118] Traffic management—Each virtual interface can be given a specific bandwidth.

[0119] Administration and management—Various functions can be configured for administration purposes, such as administrator login, mail alert, syslog, counters, logs and alarms.

[0120] Virtual LAN—The Virtual LAN can be defined on virtual interfaces within the Internet security system. Once the virtual LAN has been defined, the received VLAN traffic will be directed to the indicated virtual interface and traffic destined to the indicated virtual interface will be properly tagged with a VLAN ID.

[0121] VPN—Combined with private policies, the VPN provides secure tunneling for selected traffic going through the Internet security system. The tunneling can be PPTP, L2TP and IPSec.

[0122] Routing—Each system may define a private routing table and routing protocol.

[0123] A number of embodiments of the invention have been described. Nevertheless, it will be understood that various modifications may be made without departing from the spirit and scope of the invention. Accordingly, other embodiments are within the scope of the following claims.

What is claimed is:

1. A packet forwarding device for processing a data packet, the packet forwarding device comprising:

an input port, the input port being operable to receive a data packet;

a processor, the processor being connected to the input port and being operable to:

determine a virtual local area network destination for the received data packet, including identifying a set of rules that are associated with the virtual local area network destination; and

apply the set of rules to the data packet; and

an output port, the output port being connected to the processor and being operable to:

output the data packet to its virtual local area network destination, using the result from the application of the rules if a virtual local area network destination has been determined for the received data packet; and

drop the data packet if a virtual local area network destination has not been determined for the received data packet.

2. The packet forwarding device of claim 1, wherein the processor further is operable to apply a traffic policy to the received data packet, the traffic policy being associated with the packet forwarding device and applied to all data packets processed by the packet forwarding device.

3. The packet forwarding device of claim 1, wherein the processor is operable to determine a virtual local area network destination by:

extracting layer information from the data packet, the layer information being selected from the group consisting of layer 2 information, layer 3 information, layer 4 information and layer 7 information; and

using the extracted layer information to determine a virtual local area network destination for the data packet.

4. The packet forwarding device of claim 1, wherein the processor is operable to apply the set of rules to the data packet by:

shaping the data packet based on the virtual local area network destination; and

discarding the data packet if no virtual local area network destination is determined.

5. The packet forwarding device of claim 4, wherein shaping the data packet comprises:

attaching a digital address tag to the data packet, the digital address tag identifying a virtual local area network destination; and further comprising

reading the digital address tag and outputting the data packet using the digital address tag content.

6. The packet forwarding device of claim 1, wherein the processor is operable to apply the set of rules to the data packet by applying a set of rules selected from the group consisting of network address translation, mobile internet protocol, virtual internet protocol, user authentication and URL blocking.

7. The packet forwarding device of claim 1, wherein the processor is operable to apply the set of rules to the data packet by applying a set of policies selected from the group consisting of incoming policies and outgoing policies for a virtual local area network destination.

8. The packet forwarding device of claim 7, wherein the processor further is operable to:

retrieve entries from one or more of a global address book, a private address book, and a global service book; and

wherein applying the rules to the data packet comprises using the retrieved entries.

9. The packet forwarding device of claim 1, wherein the processor further is operable to:

determine available resources for outputting the data packet to the virtual private network destination, the resources being definable by a user; and wherein outputting the data packet comprises:

outputting the data packet to a determined virtual private network destination in accordance with the determined available resources.

10. The packet forwarding device of claim 1, wherein the processor further is operable to apply the set of rules to the data packet by applying a set of virtual tunneling rules for a virtual local area network destination, the tunneling rules being selected from the group consisting of PPTP, L2TP and IPsec tunneling protocols.

11. The packet forwarding device of claim 1, wherein outputting the data packet comprises:

if a virtual local area network destination has been determined for the received data packet, reading a set of entries in a private routing table; and

outputting the data packet to its virtual local area network destination using a routing protocol for the packet's virtual local area network destination.

12. The packet forwarding device of claim 1, wherein the processor further is operable to receive a set of rules configured by a user.

13. The packet forwarding device of claim 1, further comprising a management module, the management module being operable to associate one or more management settings with a virtual local area network, the management settings being selected from the group consisting of administrator tools, logging, counting, alarming and notification facilities.

14. The packet forwarding device of claim 13, wherein the management module further is operable to set up additional VLAN destinations.

15. The packet forwarding device of claim 1, further comprising a user interface, the user interface being operable to display a unique user interface for each virtual local area network.

16. A method for processing a data packet in a packet forwarding device, the method comprising:

receiving a data packet;

determining a virtual local area network destination for the received data packet, including identifying a set of rules that are associated with the virtual local area network destination;

applying the set of rules to the data packet; and

if a virtual local area network destination has been determined for the received data packet, outputting the data packet to its virtual local area network destination, using the result from the application of the rules, and

if a virtual local area network destination has not been determined for the received data packet, dropping the data packet.

17. The method of claim 16, further comprising applying a traffic policy to the received data packet, the traffic policy being associated with the packet forwarding device and applied to all data packets processed by the packet forwarding device.

18. The method of claim 16, wherein determining a virtual local area network destination comprises:

extracting layer information from the data packet, the layer information being selected from the group consisting of layer 2 information, layer 3 information, layer 4 information and layer 7 information; and

using the extracted layer information to determine a virtual local area network destination for the data packet.

19. The method of claim 16, wherein applying the rules to the data packet comprises:

shaping the data packet based on the virtual local area network destination; and

discarding the data packet if no virtual local area network destination is determined.

20. The method of claim 19, wherein shaping the data packet comprises:

attaching a digital address tag to the data packet, the digital address tag identifying a virtual local area network destination; and further comprising

reading the digital address tag and outputting the data packet using the digital address tag content.

21. The method of claim 16, wherein applying the rules to the data packet comprises applying a set of rules selected from the group consisting of network address translation, mobile internet protocol, virtual internet protocol, user authentication and URL blocking.

22. The method of claim 16, wherein applying the rules to the data packet comprises applying a set of policies selected from the group consisting of incoming policies and outgoing policies for a virtual local area network destination.

23. The method of claim 22, further comprising:

retrieving entries from one or more of a global address book, a private address book, and a global service book; and

wherein applying the rules to the data packet comprises using the retrieved entries.

24. The method of claim 16, further comprising:

determining available resources for outputting the data packet to the virtual private network destination, the resources being definable by a user; and wherein outputting the data packet comprises:

outputting the data packet to a determined virtual private network destination in accordance with the determined available resources.

**25.** The method of claim 16, wherein applying the rules to the data packet comprises applying a set of virtual tunneling rules for a virtual local area network destination, the tunneling rules being selected from the group consisting of PPTP, L2TP and IPSec tunneling protocols.

**26.** The method of claim 16, wherein outputting the data packet comprises:

if a virtual local area network destination has been determined for the received data packet, reading a set of entries in a private routing table; and

outputting the data packet to its virtual local area network destination using a routing protocol for the packet's virtual local area network destination.

**27.** The method of claim 1, further comprising receiving a set of rules configured by a user.

**28.** A data processing system for processing data packets transferred over a network, the data processing system comprising:

a firewall engine, the firewall engine being operable to:

receive a set of firewall policies; and

apply the firewall policies to a data packet;

an authentication engine, the authentication engine being operable to:

receive a set of authentication policies; and

authenticate a data packet in accordance with the authentication policies;

one or more virtual private networks, each virtual private network having an associated destination address and policies; and

a controller being operable to:

detect an incoming data packet;

examine the incoming data packet for a virtual private network destination address;

identify the policies associated with the virtual private network destination;

if the policies include firewall policies, then call the firewall engine and apply the set of firewall policies corresponding to the virtual private network destination to the data packet;

if the policies include authentication policies, then call the authentication engine and apply the set of authentication policies corresponding to the virtual private network destination to the data packet; and

route the data packet to the virtual private network containing the data packet's destination address.

**29.** The data processing system of claim 28, wherein the controller is operable to examine the incoming data packet by:

extracting layer information from the data packet, the layer information being selected from the group consisting of layer 2 information, layer 3 information, layer 4 information and layer 7 information; and

using the extracted layer information to determine a virtual private network destination address.

**30.** The data processing system of claim 28, wherein the authentication policies include one or more of: network address translation, mobile internet protocol, virtual internet protocol, user authentication and URL blocking.

**31.** The data processing system of claim 28, wherein the firewall policies include one or more of: incoming policies and outgoing policies for a virtual local area network destination.

**32.** The data processing system of claim 28, wherein the controller is operable to route the data packet by:

reading a set of entries in a private routing table; and

outputting the data packet to its virtual private network destination address using a routing protocol associated with the packet's virtual private network destination address.

**33.** A method for screening data packets transferred over a network, the method comprising:

connecting to one or more virtual local area networks;

associating a set of firewall configuration settings with each of the one or more virtual local area networks;

receiving an incoming data packet;

screening the incoming data packet in accordance with a set of firewall configuration settings; and

outputting the screened data packet to a particular virtual local area network among the one or more virtual local area networks, based on the result of the screening.

**34.** The method of claim 33, further comprising applying a traffic policy to the received data packet, the traffic policy being applied to all incoming data packets independent of the packets' local area network destination.

**35.** The method of claim 33, wherein screening the data packet comprises applying a set of rules selected from the group consisting of network address translation, mobile internet protocol, virtual internet protocol, user authentication and URL blocking.

**36.** The method of claim 33, wherein screening the data packet comprises applying a set of policies selected from the group consisting of incoming policies and outgoing policies for a virtual local area network destination.

**37.** The method of claim 33, further comprising:

determining available resources for outputting the data packet to the virtual local area network destination, the resources being definable by a user; and wherein outputting the data packet comprises:

outputting the data packet to a determined virtual local area network destination in accordance with the determined available resources.

**38.** The method of claim 33, wherein outputting the data packet comprises:

if a virtual local area network destination has been determined for the received data packet, reading a set of entries in a private routing table; and

outputting the data packet to its virtual local area network destination using a routing protocol for the packet virtual local area network destination.

**39.** A packet processing system in a network for transferring packets of data, comprising: one or more packet processing engines, each packet processing engine being operable to:

receive an incoming packet of data;  
 apply a global traffic policy to the incoming packet;  
 classify the incoming packet including determining a virtual local area network destination;  
 shape the incoming packet based on the virtual local area network destination; and  
 output the shaped packet.

**40.** The packet processing system of claim 39, further including one or more switches connected to the packet processing engine by a trunk cable and being operable to:

receive the shaped packet from the packet processing engine through the trunk cable;

determine a destination device to which the shaped packet is to be routed; and

switch the shaped packet to a communication link that is connected to the destination device.

**41.** The packet processing system of claim 40, wherein the trunk cable is a VLAN cable.

**42.** The packet processing system of claim 40, wherein a first packet processing engine of the one or more packet processing engines is connected to a first switch of the one or more switches, and cross connected to at least a second switch of the one or more switches; and

a second packet processing engine of the one or more packet processing engines is connected to the second switch of the one or more switches, and cross connected to at least the first switch of the one or more switches.

**43.** The packet processing system of claim 42, wherein each of the first and second switches operable to connect to one or more communication links, each communication link representing a virtual local area network destination.

**44.** The packet processing system of claim 42, further comprising a trunk cable connecting a switch and a packet processing engine.

**45.** The packet processing system of claim 42, consisting of:

a first packet processing engine connected to a first switch of the one or more switches, and cross connected to a second switch; and

a second packet processing engine connected to the second switch, and cross connected to the first switch, each of the first and second switches being operable to connect to one or more communication links, each communication link representing a virtual local area network destination.

**46.** The packet processing system of claim 40, further comprising one or more virtual local area networks (VLANs), each virtual local area network being connected to the one or more switches via a communication link dedicated for the virtual local area network.

**47.** The packet processing system of claim 39, wherein outputting the packet comprises outputting the shaped packet to its virtual local area network destination through a destination port on the packet processing engine, the destination port connecting the packet processing engine via a communication link to a destination device.

**48.** The packet processing system of claim 47, further comprising one or more virtual local area networks

(VLANs), each virtual local area network being connected to a destination port on the packet processing engine via a communication link dedicated for the virtual local area network.

**49.** The packet processing system of claim 39, wherein each packet processing engine is operable to perform one or more functions that are configurable for each virtual local area network.

**50.** A security system, comprising:

security system resources including firewall services; and

a controller operable to partition the security system resources into a plurality of separate security domains, each security domain being configurable to enforce one or more policies relating to a specific subsystem, and to allocate security system resources to the one or more security domains.

**51.** The security system of claim 50, wherein the security system further is operable to allocate security system resources to a specific subsystem.

**52.** The security system of claim 50, wherein the specific subsystem is a computer network.

**53.** The security system of claim 50, wherein the specific subsystem is a device connected to a computer network.

**54.** The security system of claim 50, wherein each security domain includes a user interface for viewing and modifying a set of policies relating to a specific subsystem.

**55.** The security system of claim 54, wherein the security system resources further include authentication services.

**56.** The security system of claim 54, wherein the security system resources further include virtual private network (VPN) services.

**57.** The security system of claim 54, wherein the security system resources further include traffic management services.

**58.** The security system of claim 51, wherein the security system resources further include encryption services.

**59.** The security system of claim 54, wherein the security system resources further include one or more of: administrative tools, logging, counting, alarming and notification facilities, and resources for setting up additional subsystems.

**60.** The security system of claim 50, further comprising a management device operable to provide a service domain, the service domain being configurable to enforce one or more policies for all security domains.

**61.** The security system of claim 60, wherein the management device includes a user interface for viewing, adding and modifying any set of policies associated with any specific subsystem and the set of policies associated with the service domain.

**62.** The security system of claim 60, wherein the service domain includes a global address book.

**63.** The security system of claim 50, wherein each set of security domain policies includes one or more policies for incoming data packets, policies for outgoing packets, policies for virtual tunneling, authentication policies, traffic regulating policies and firewall policies.

**64.** The security system of claim 63, wherein the policies for virtual tunneling are selected from the group consisting of PPTP, L2TP and IPSec tunneling protocols.

**65.** The security system of claim 50, wherein one or more of the plurality of security domains include a unique address book.

\* \* \* \* \*