



US 20040160928A1

(19) **United States**

(12) **Patent Application Publication**
Perlman

(10) **Pub. No.: US 2004/0160928 A1**

(43) **Pub. Date: Aug. 19, 2004**

(54) **SINGLE TRANSCEIVER ARCHITECTURE FOR A WIRELESS NETWORK**

Publication Classification

(76) **Inventor: Stephen G. Perlman, Palo Alto, CA (US)**

(51) **Int. Cl.⁷ H04Q 7/24**

(52) **U.S. Cl. 370/338; 370/400**

Correspondence Address:
BURGESS & BEREZNAK LLP
800 WEST EL CAMINO REAL
SUITE 180
MOUNTAIN VIEW, CA 94040 (US)

(57) **ABSTRACT**

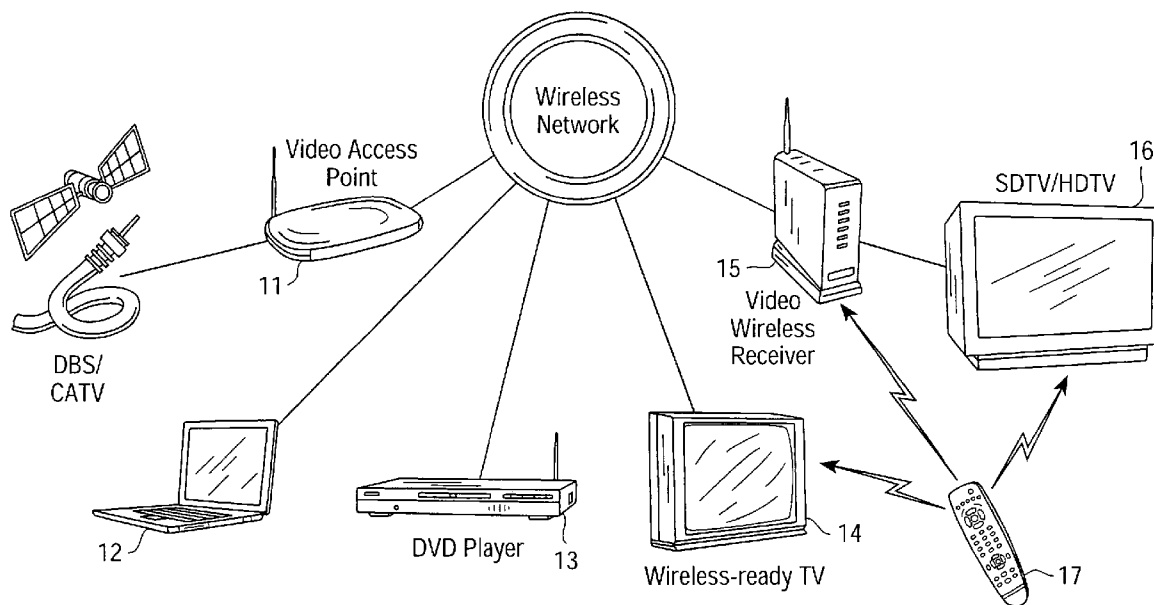
(21) **Appl. No.: 10/435,005**

A network for wireless transmission of data includes a source access point, a destination device and a plurality of wireless repeaters that provide a transmission link between the source access point and the destination device. The plurality of access points each includes a single transceiver with separate transmitter and receiver sections operable to simultaneously transmit and receive data on different frequency channels. It is emphasized that this abstract is provided to comply with the rules requiring an abstract that will allow a searcher or other reader to quickly ascertain the subject matter of the technical disclosure. It is submitted with the understanding that it will not be used to interpret or limit the scope or meaning of the claims.

(22) **Filed: May 9, 2003**

Related U.S. Application Data

(63) Continuation-in-part of application No. 10/407,445, filed on Apr. 4, 2003, which is a continuation-in-part of application No. 10/367,197, filed on Feb. 14, 2003.



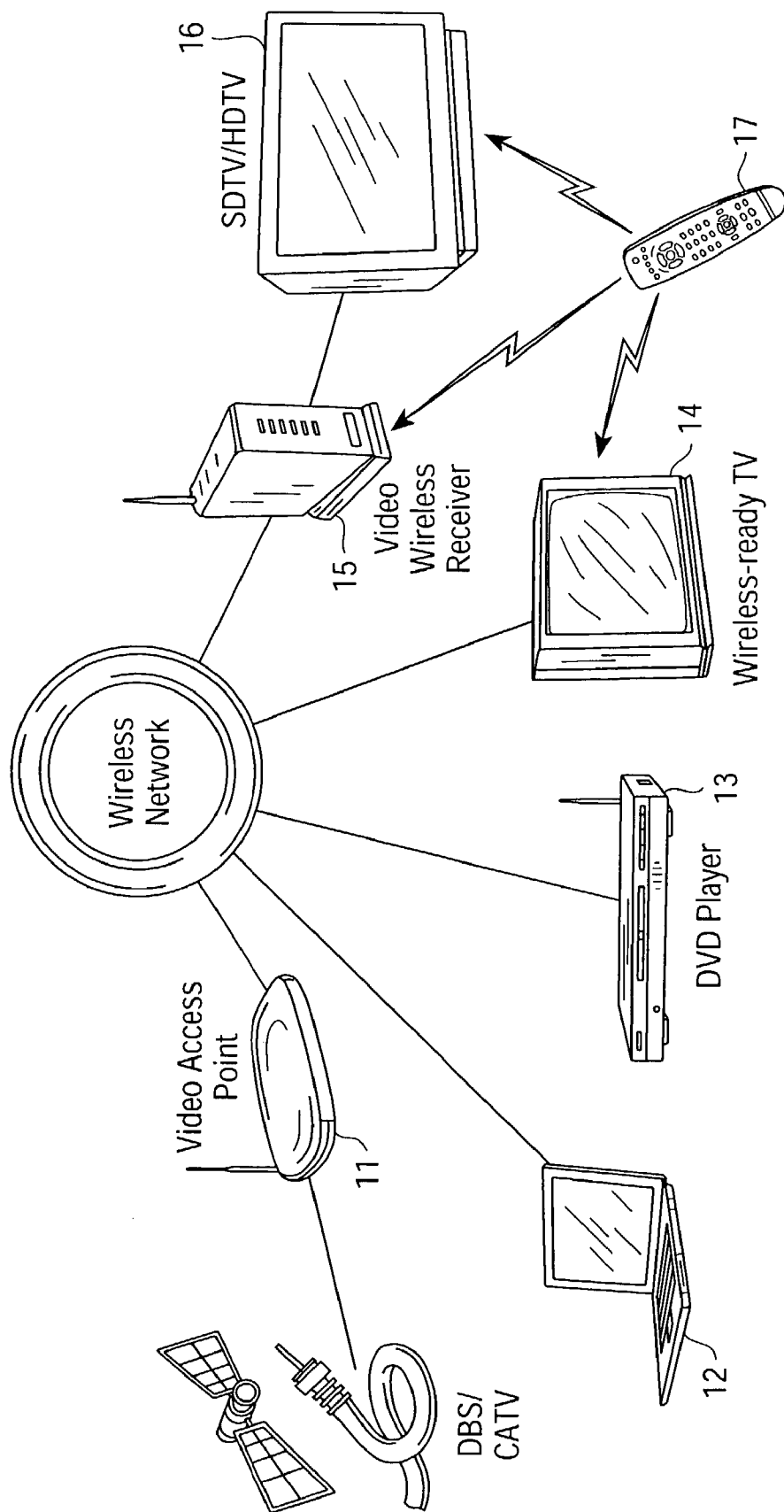


FIG. 1

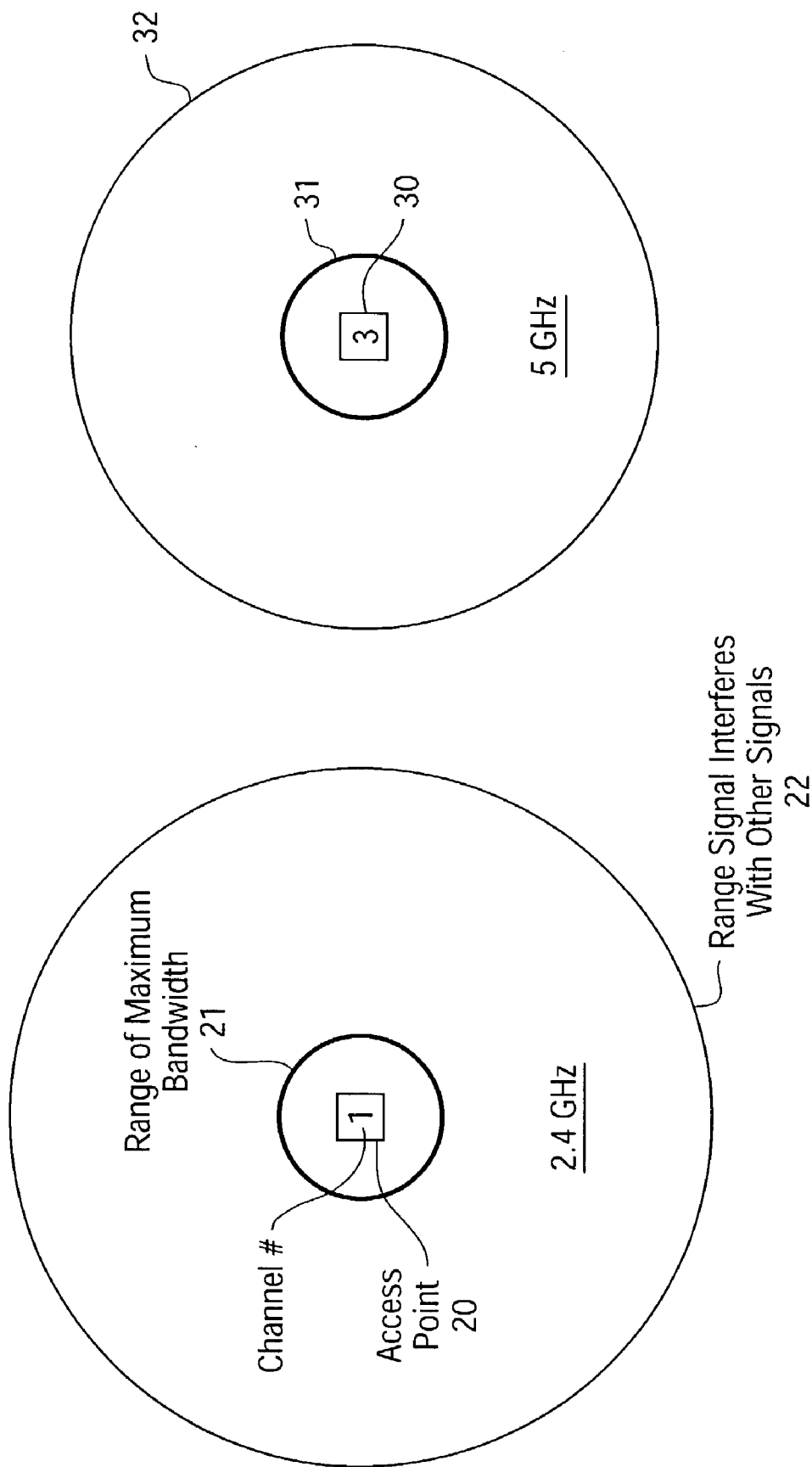


FIG. 2B

FIG. 2A

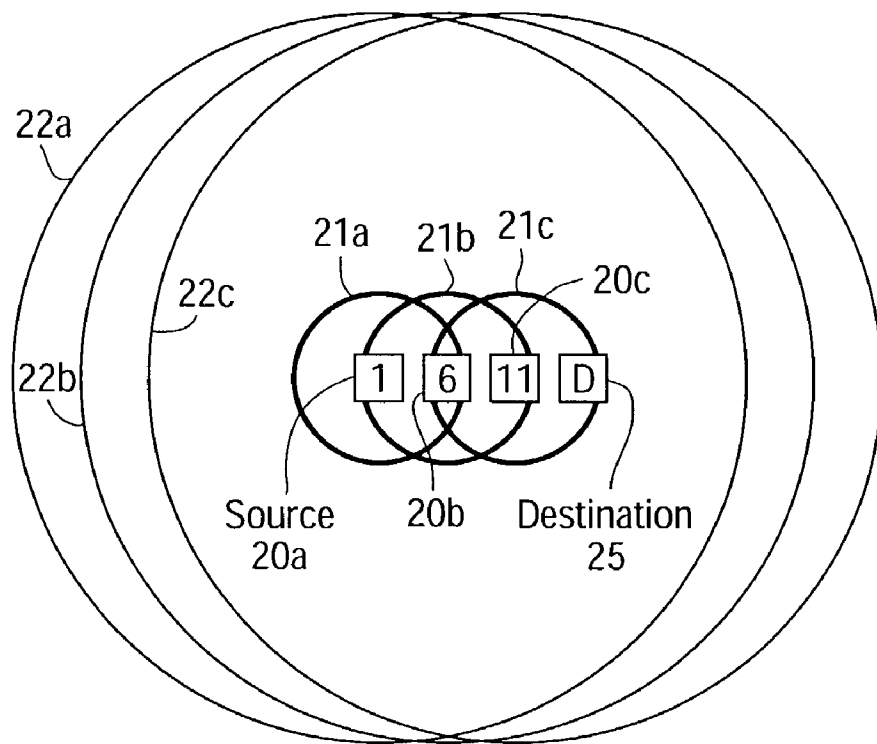


FIG. 3

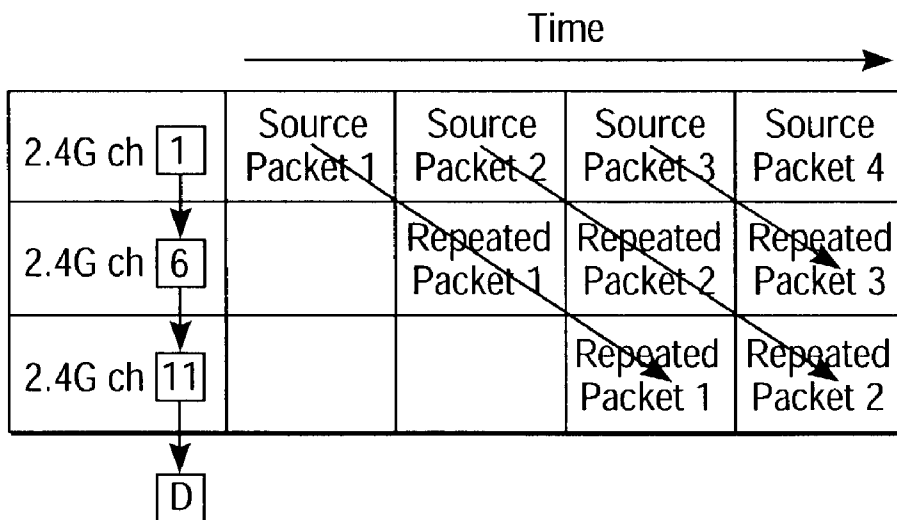


FIG. 4

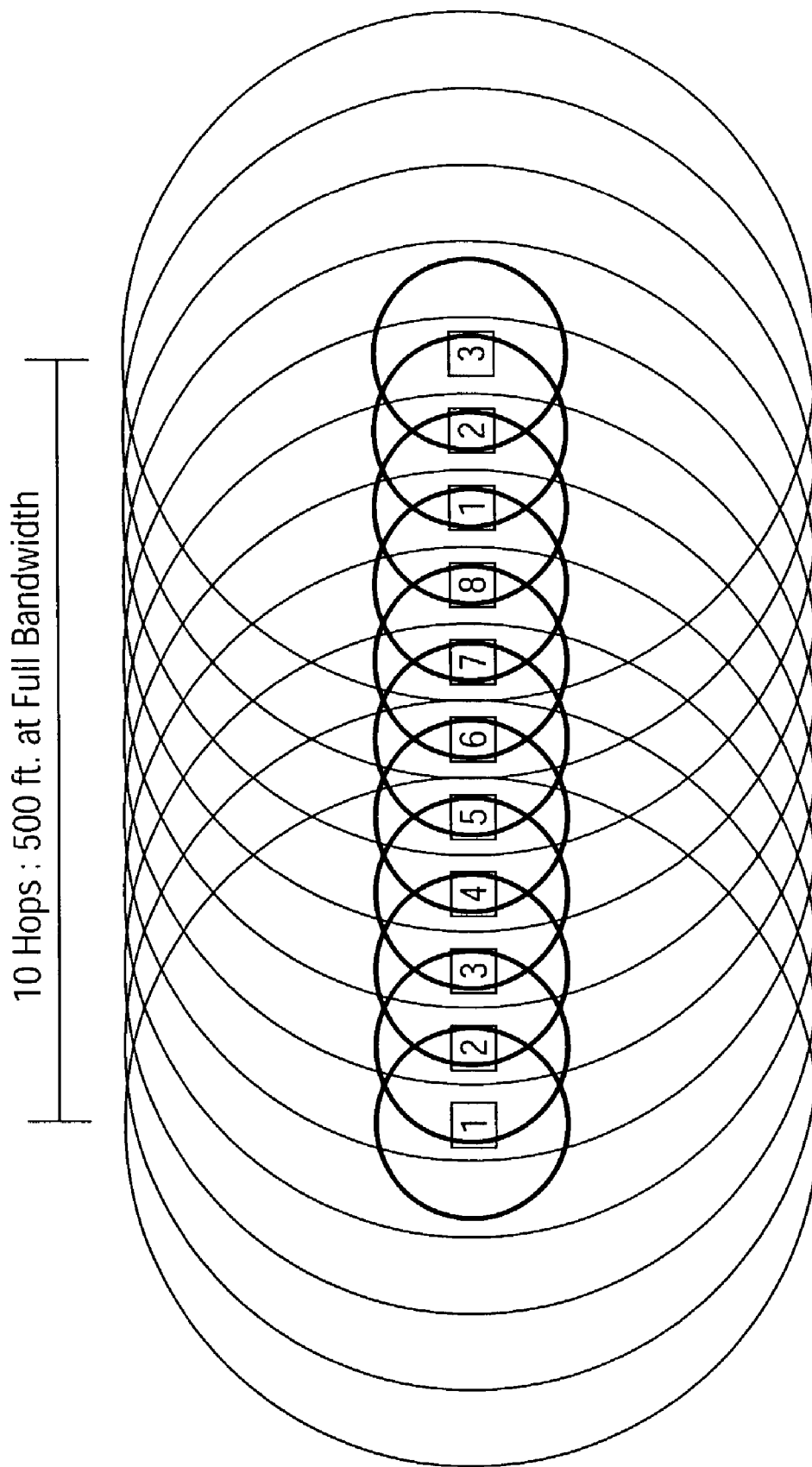


FIG. 5

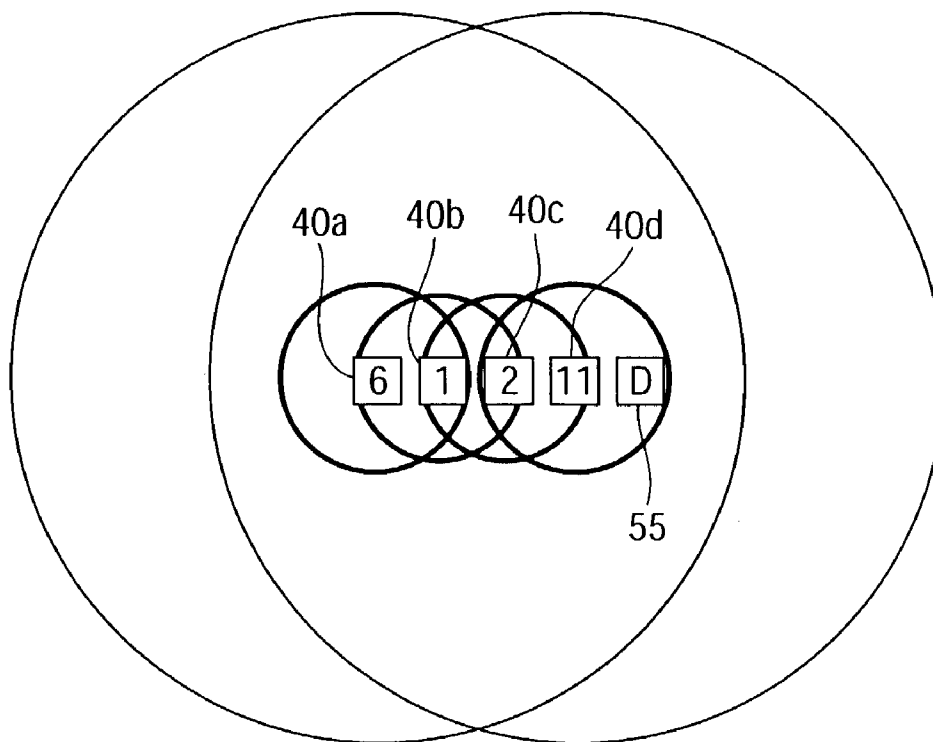


FIG. 6

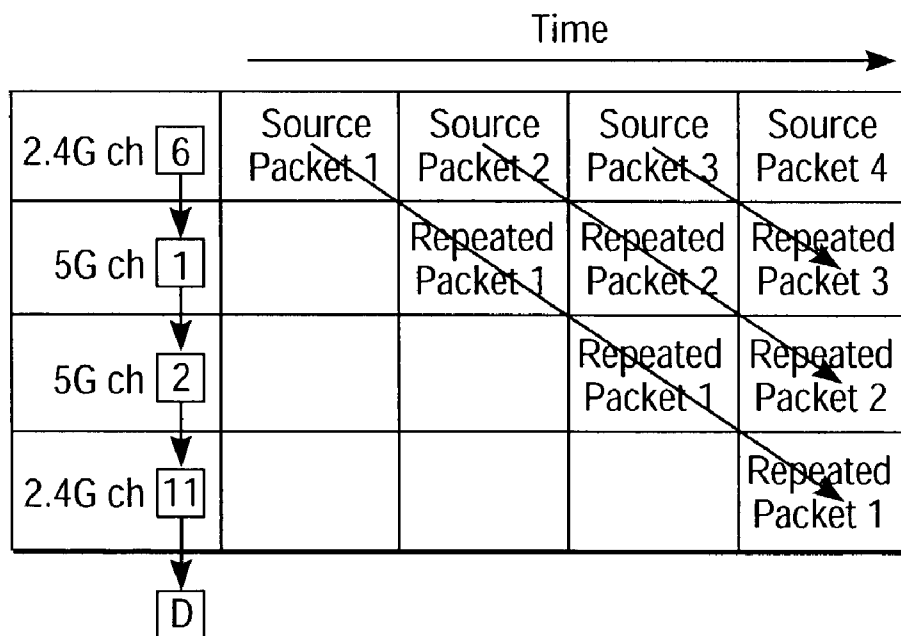


FIG. 7

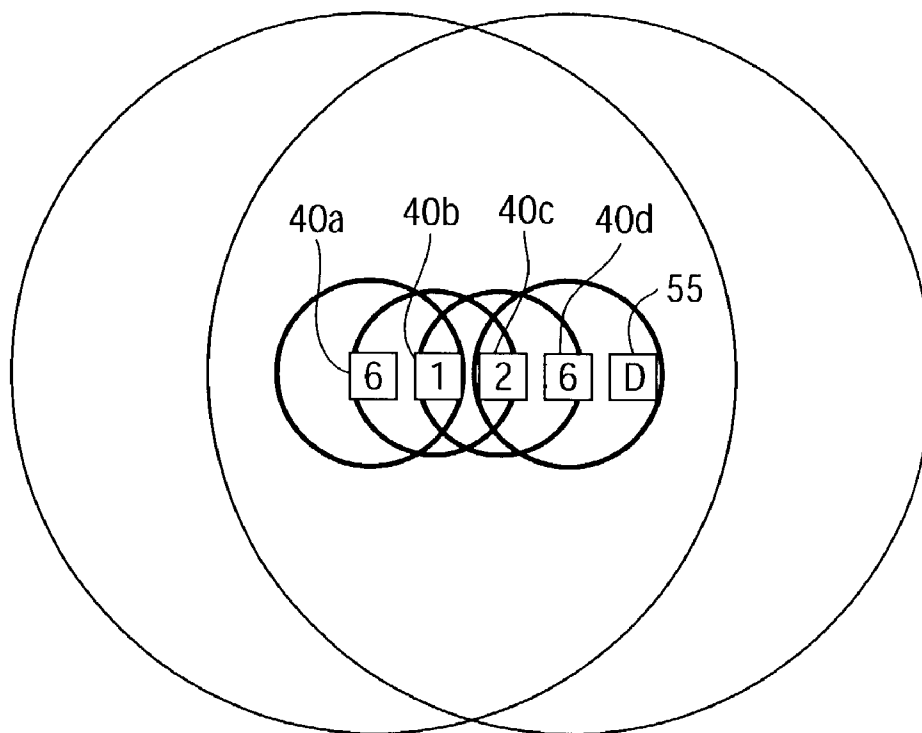


FIG. 8

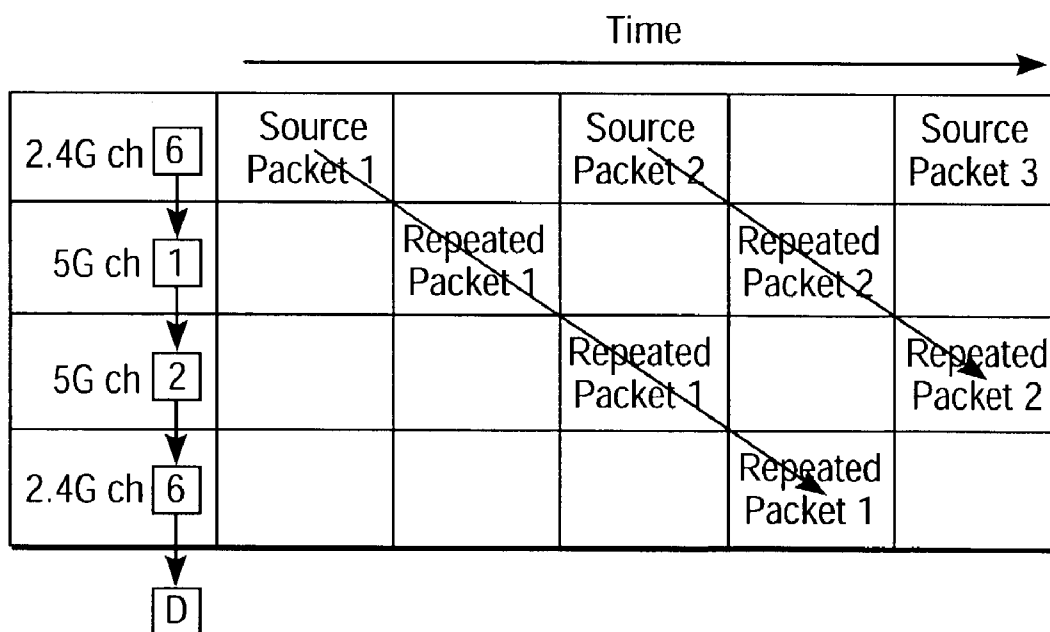


FIG. 9

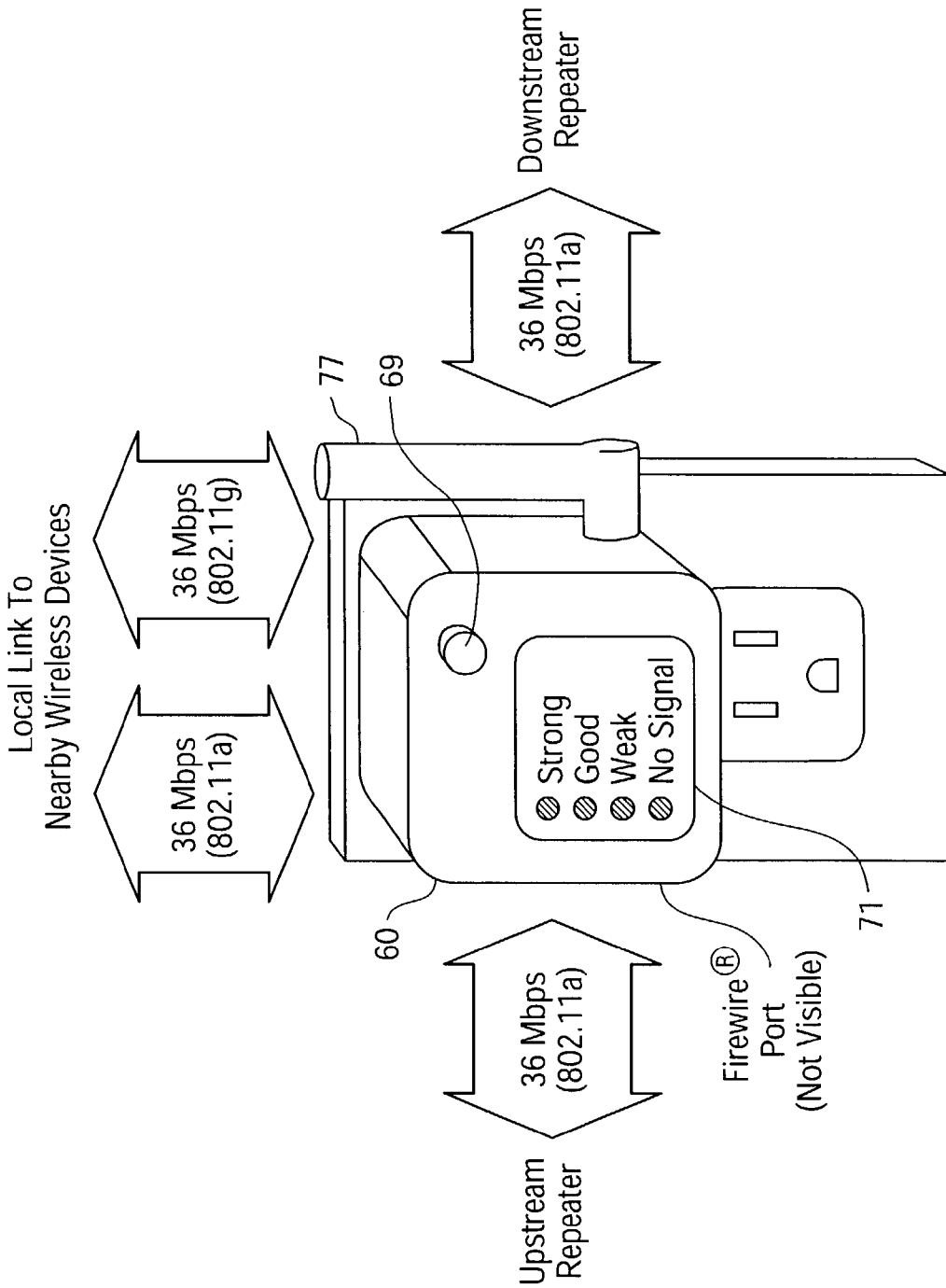


FIG. 10

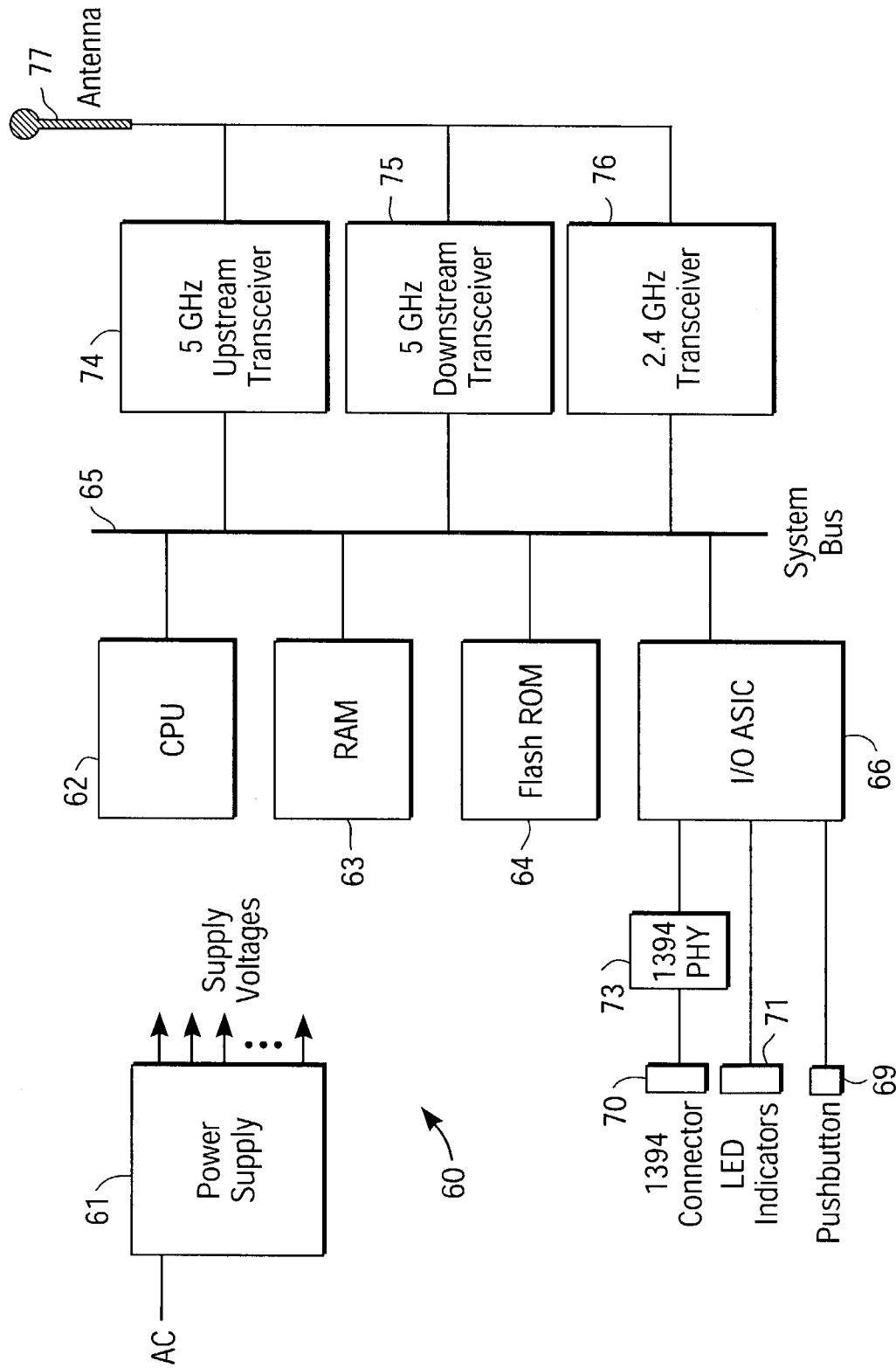


FIG. 11

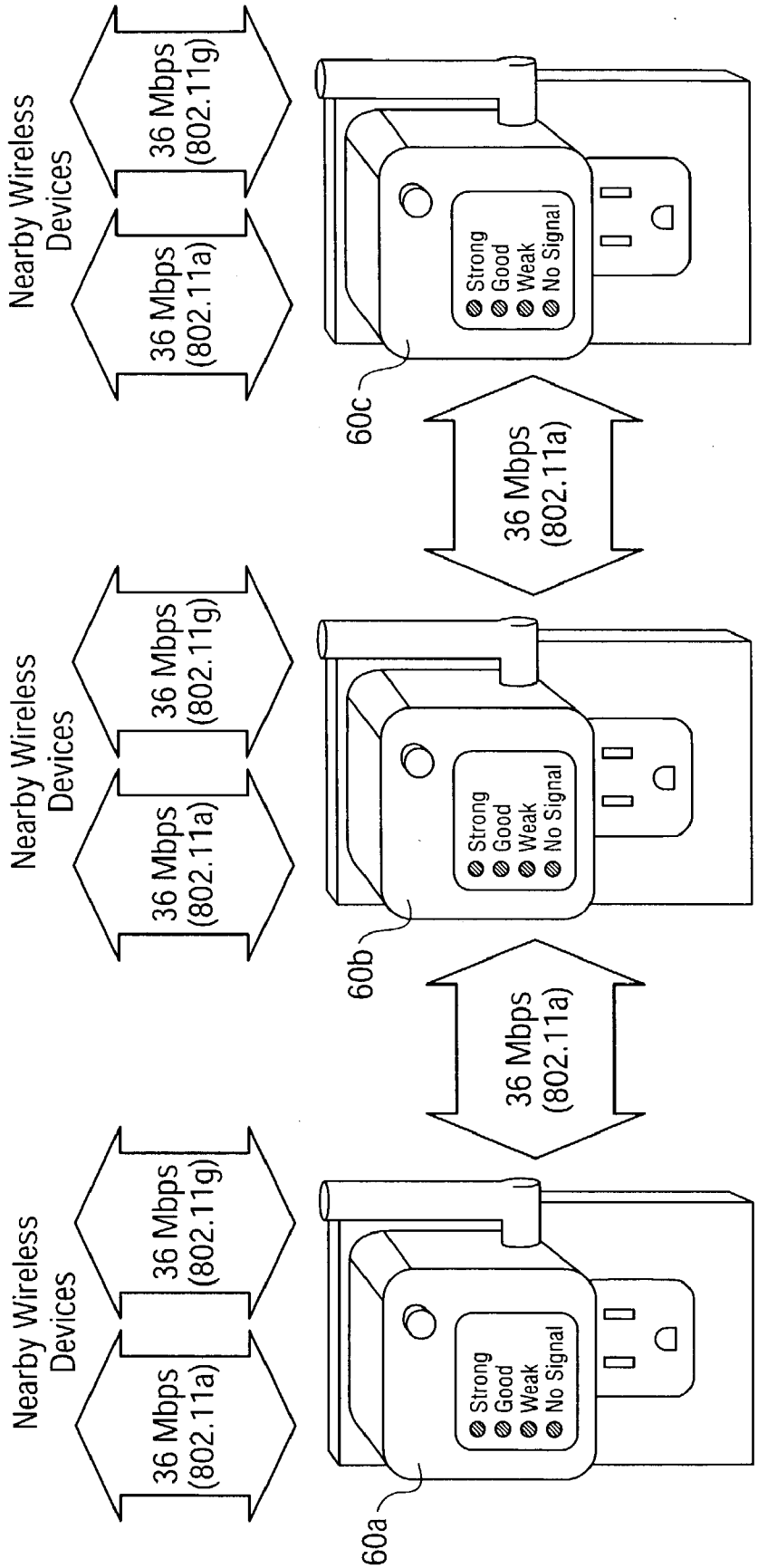


FIG. 12

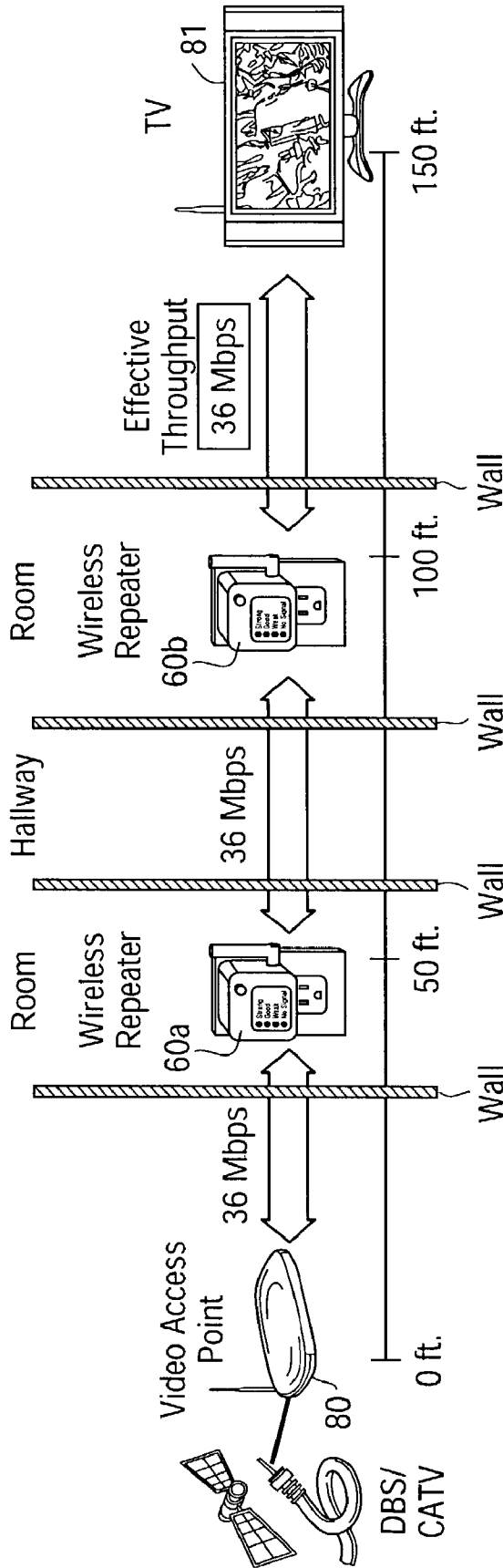
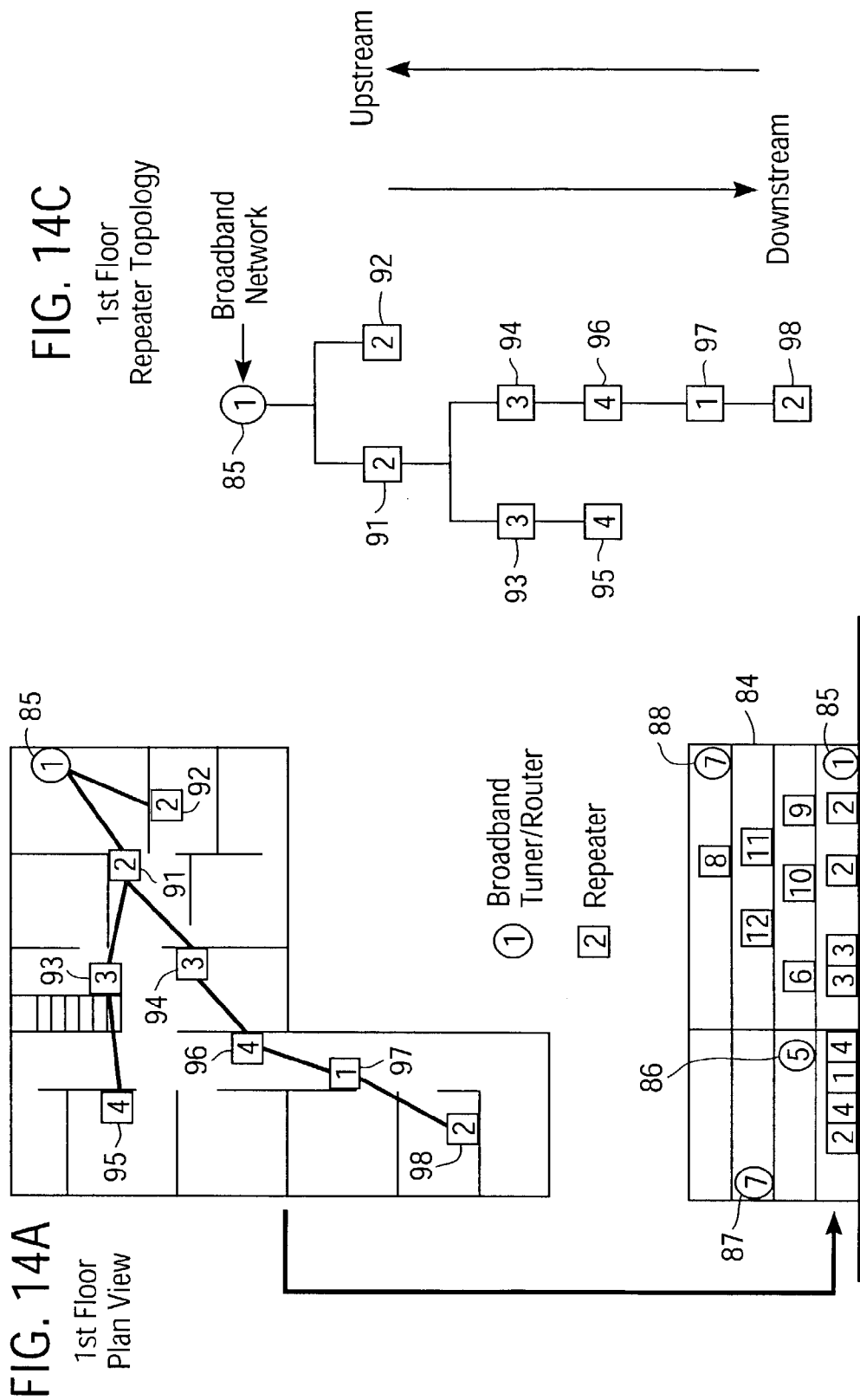


FIG. 13



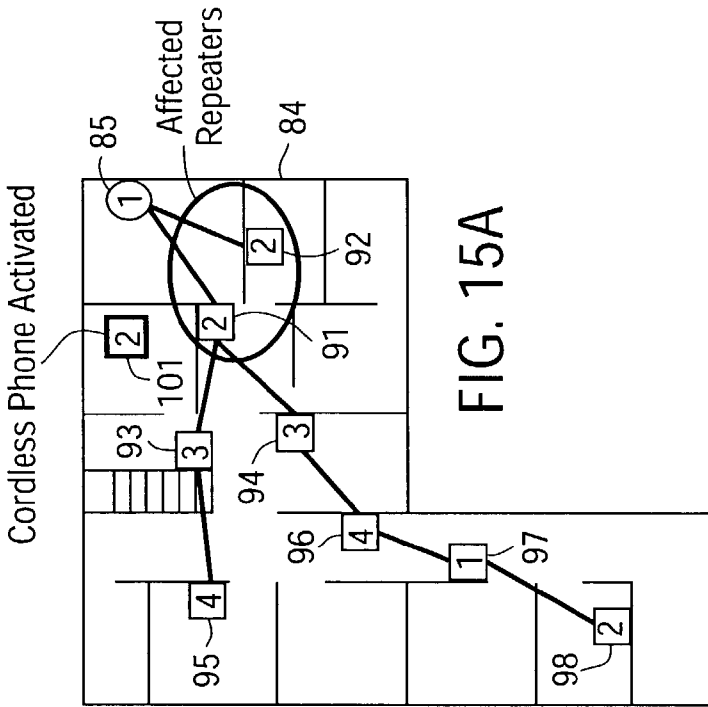


FIG. 15A

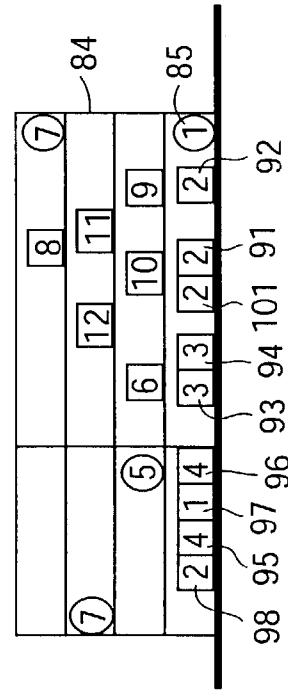
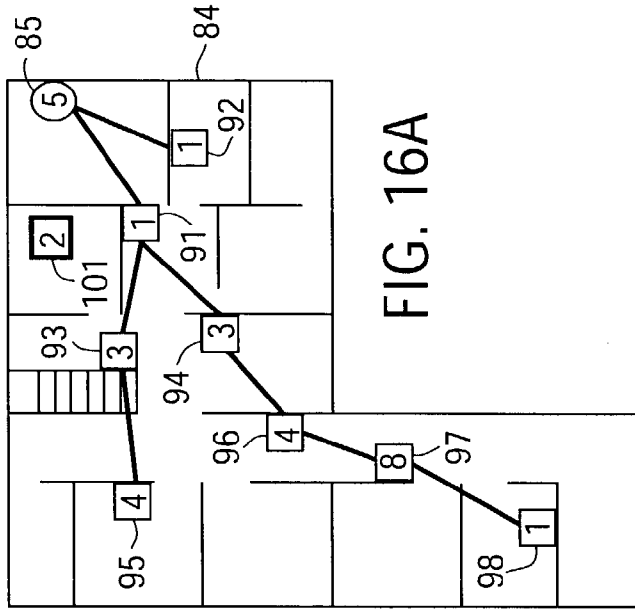
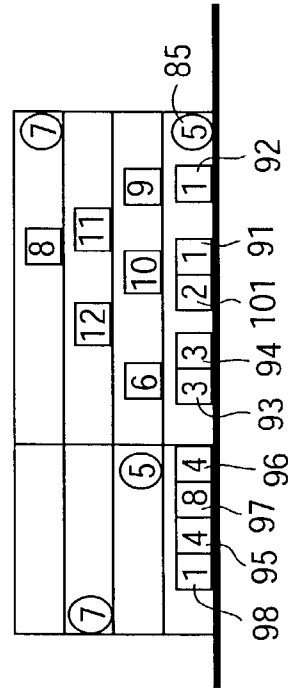


FIG. 15B



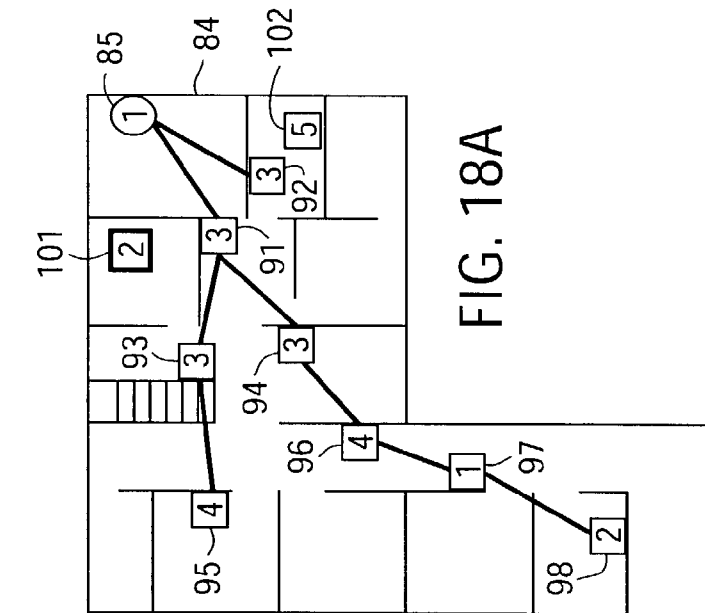


FIG. 17A

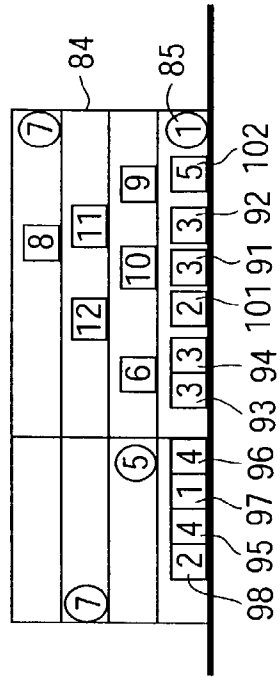


FIG. 17B

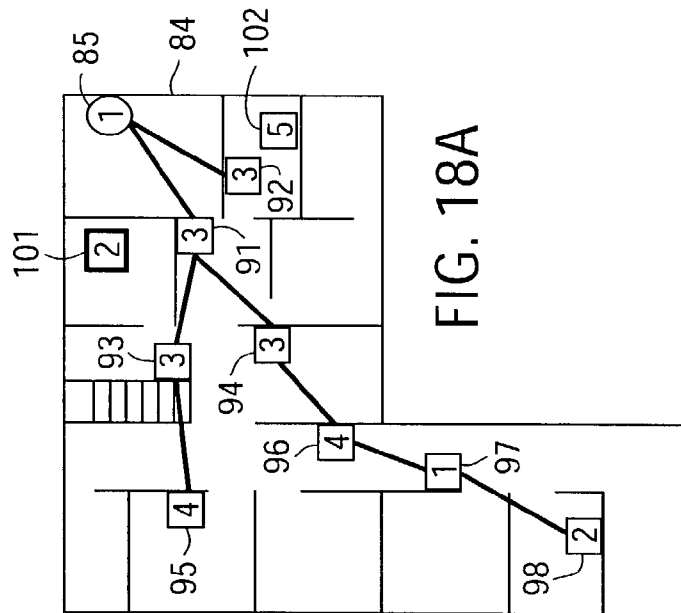


FIG. 18A

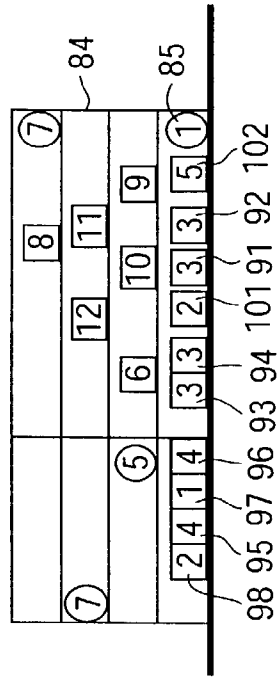


FIG. 18B

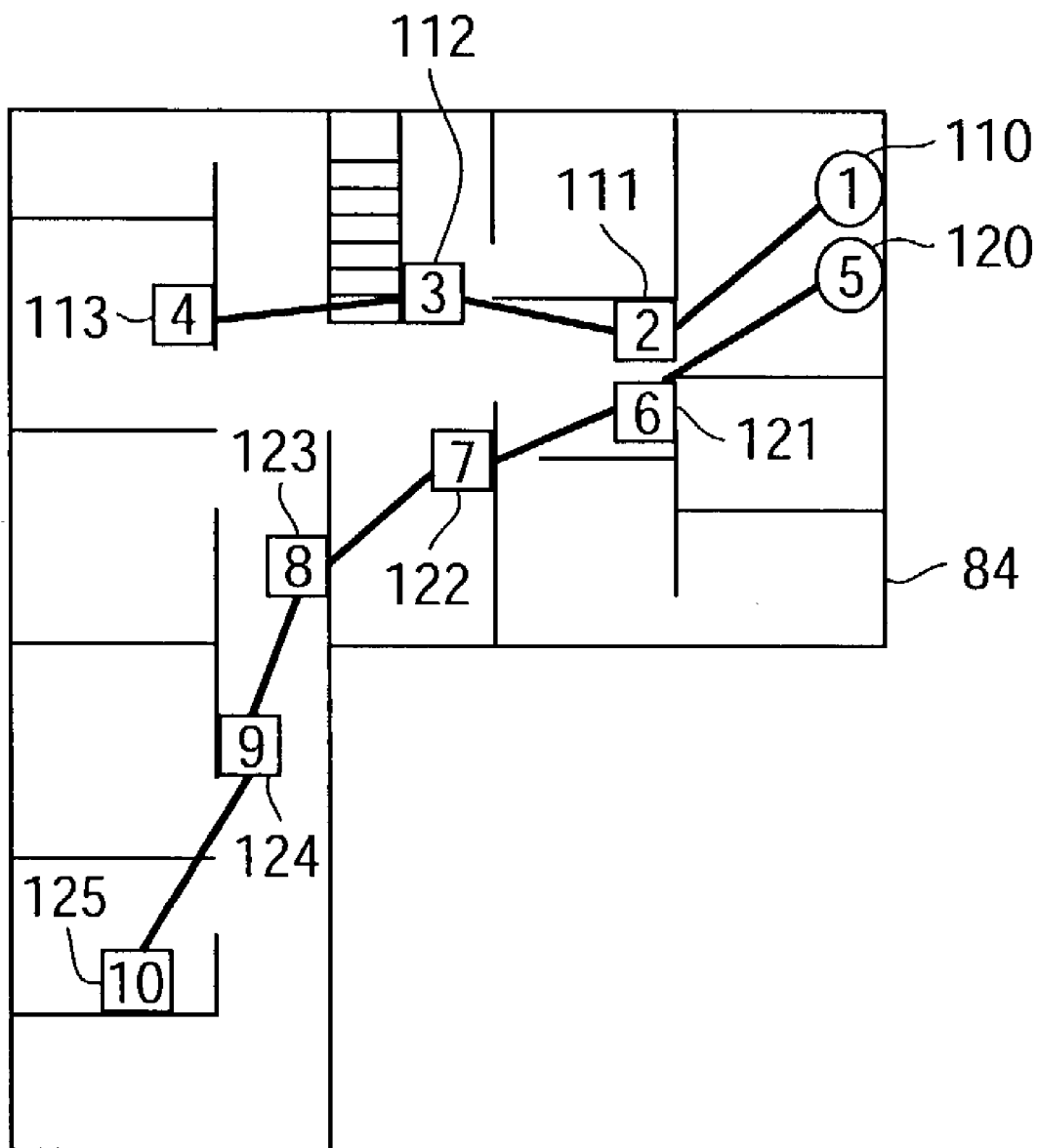


FIG. 19

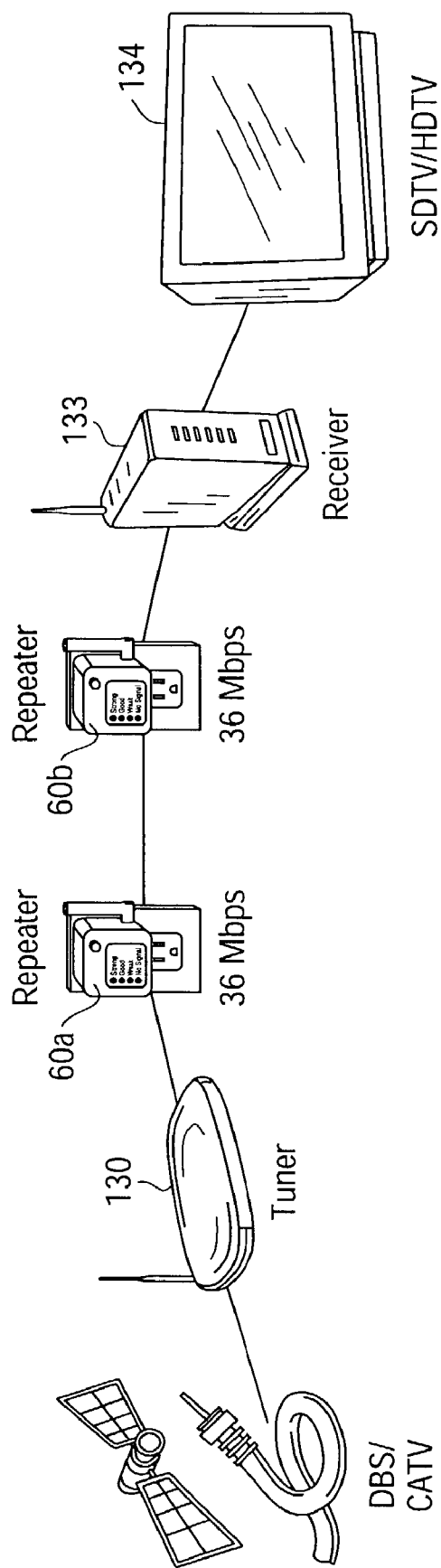


FIG. 20

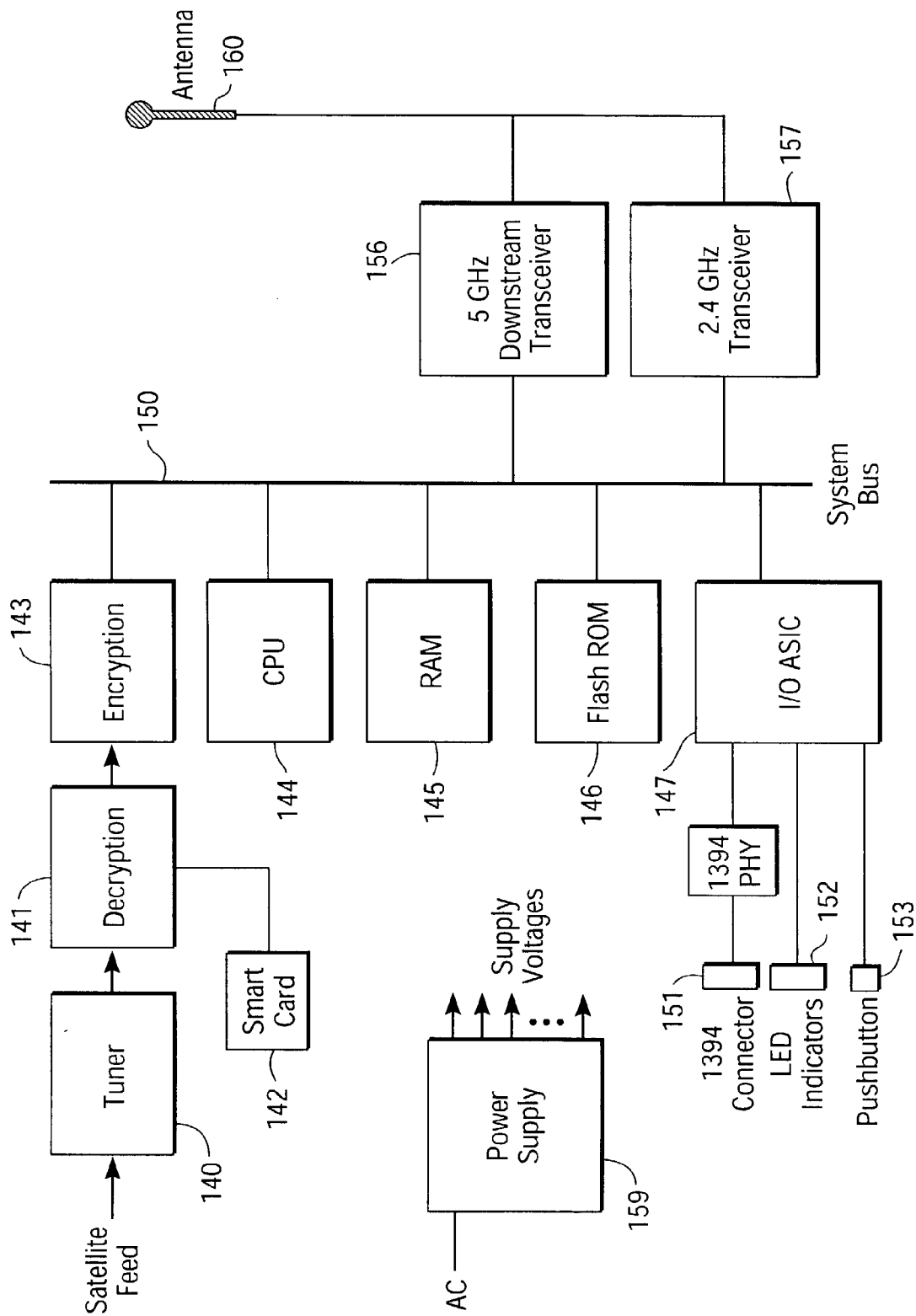


FIG. 21

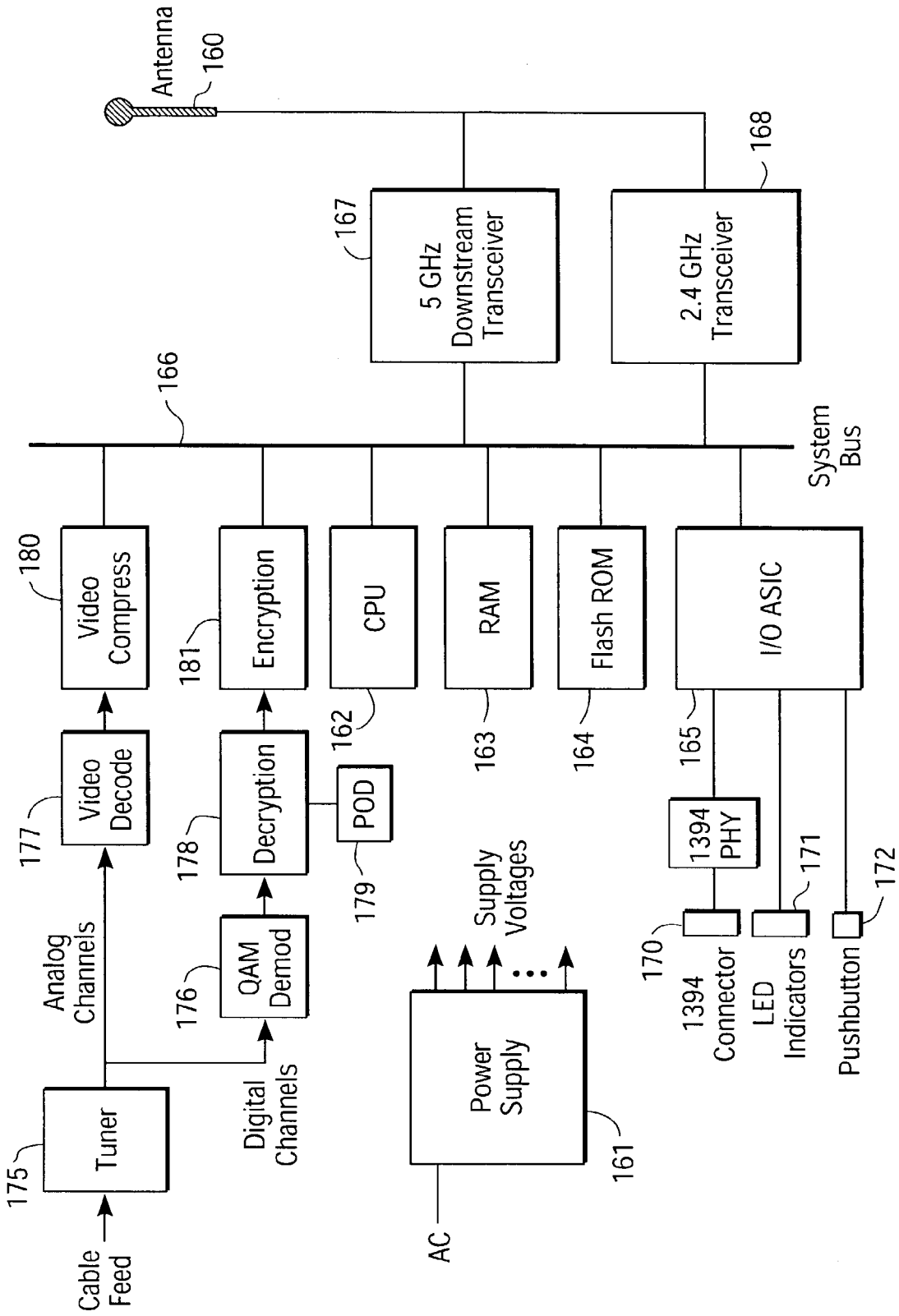


FIG. 22

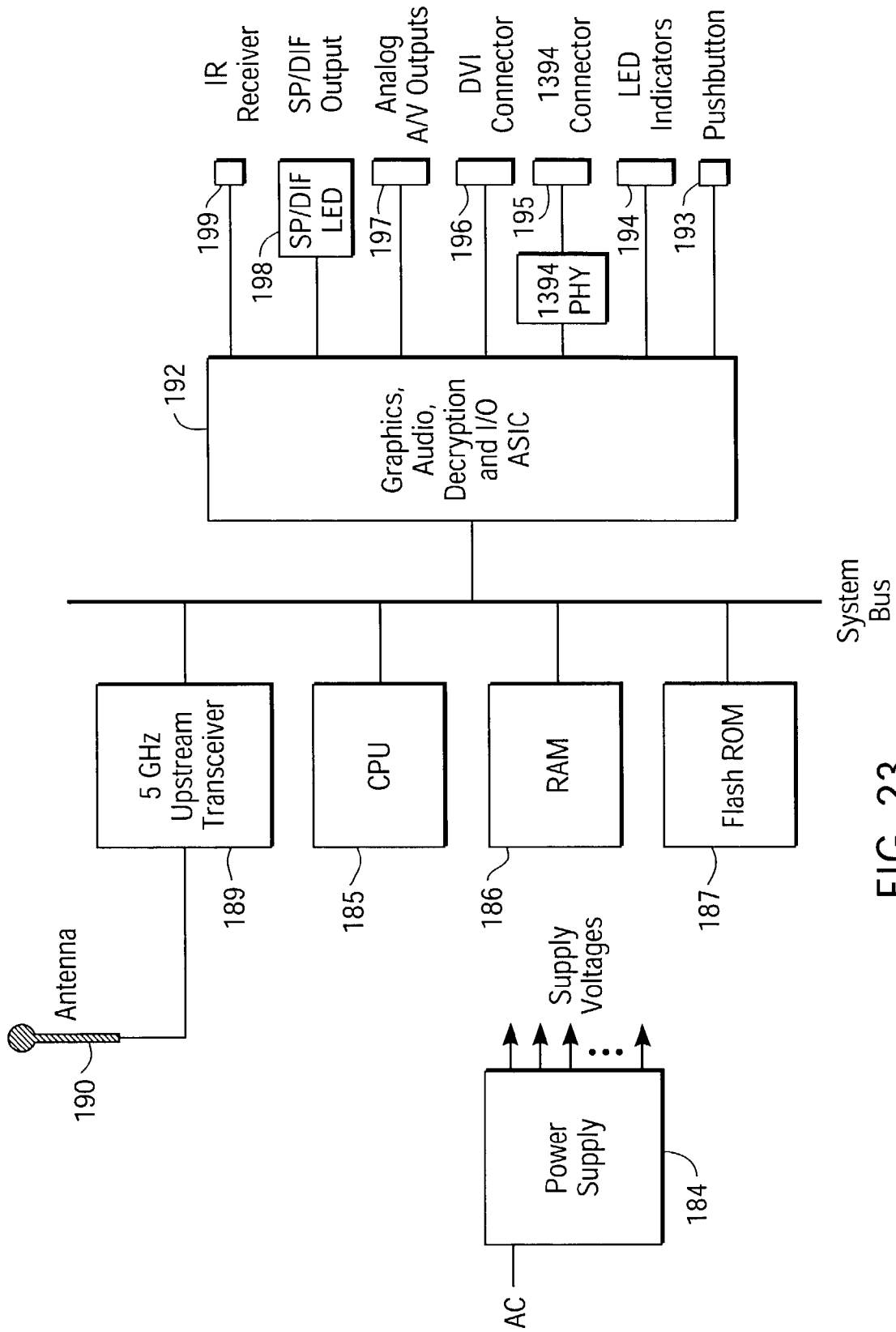


FIG. 23

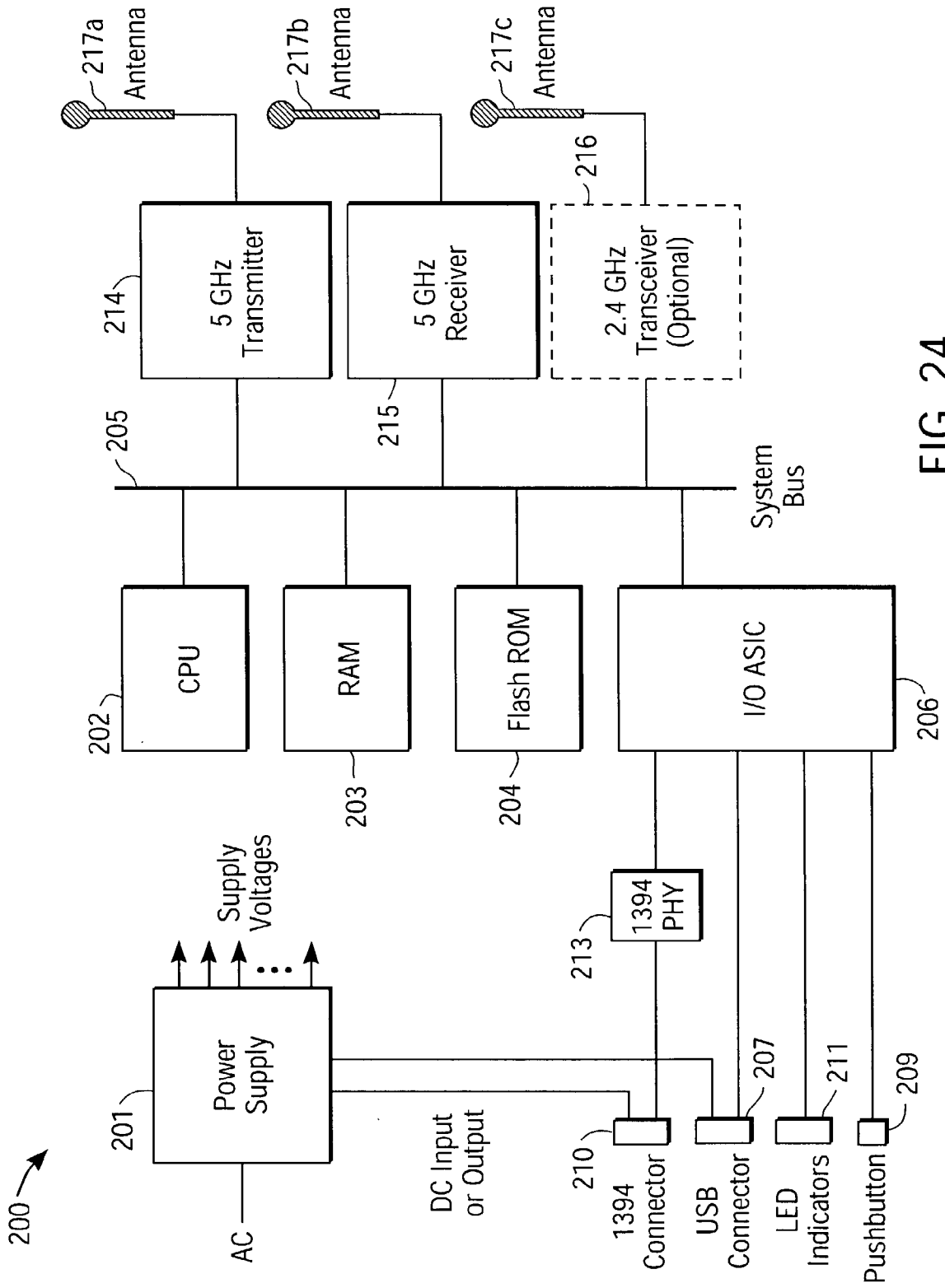


FIG. 24

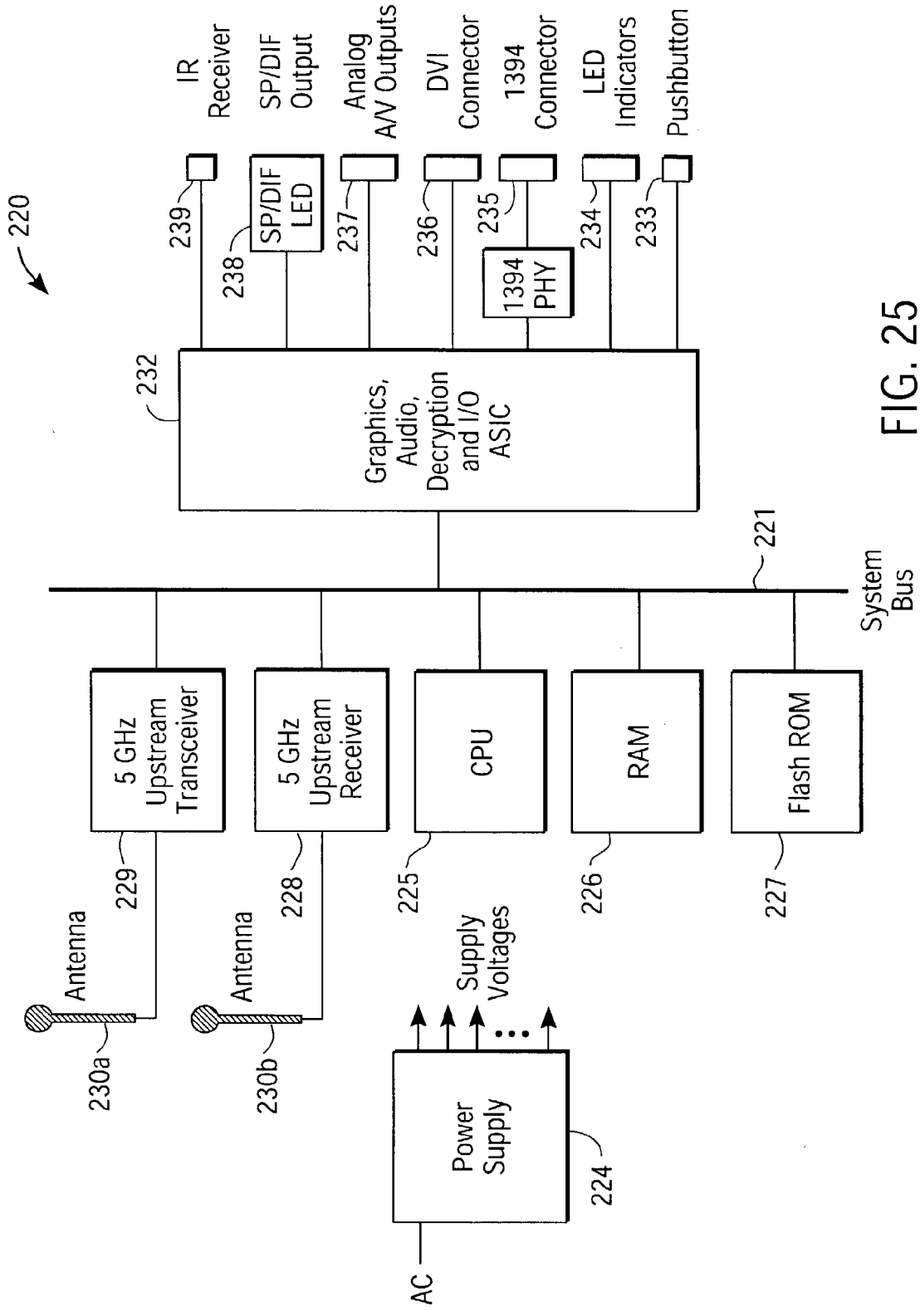


FIG. 25

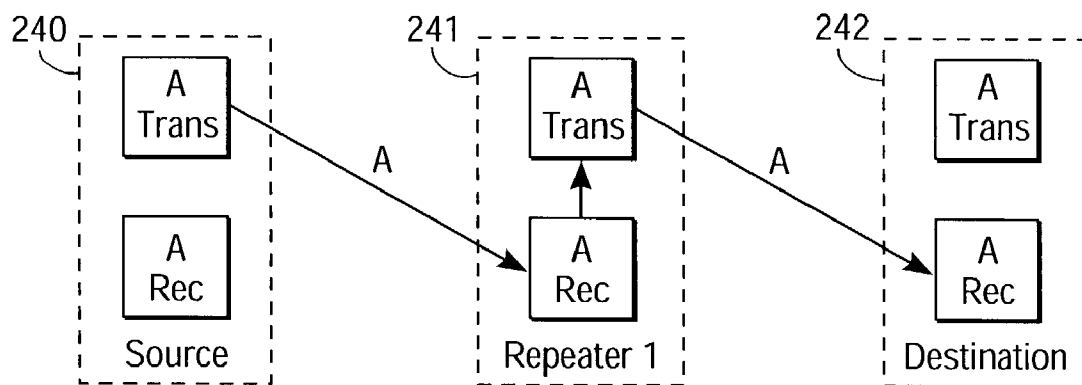


FIG. 26A
(PRIOR ART)

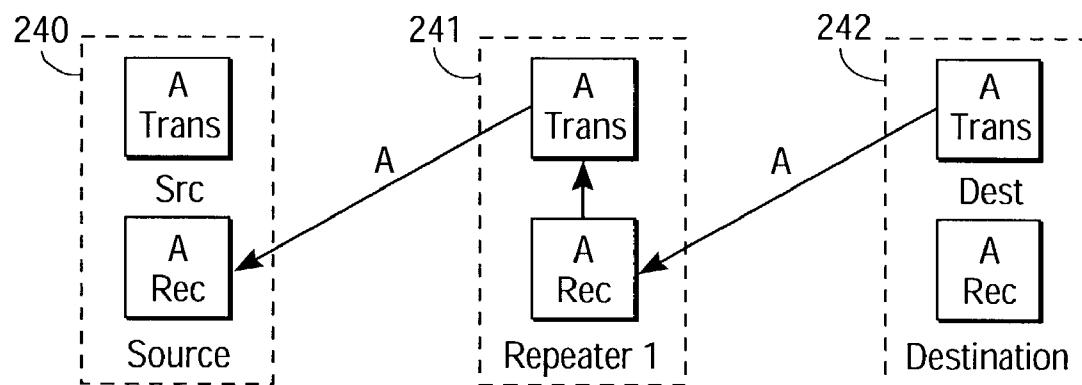


FIG. 26B
(PRIOR ART)

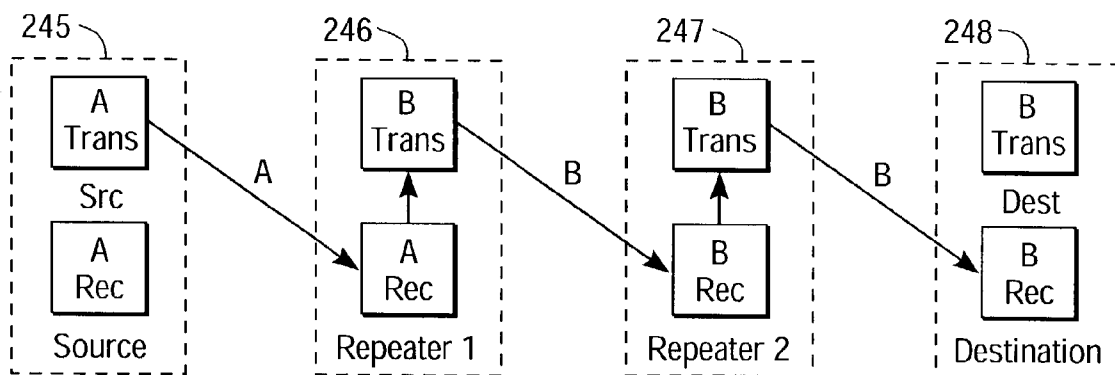


FIG. 27A

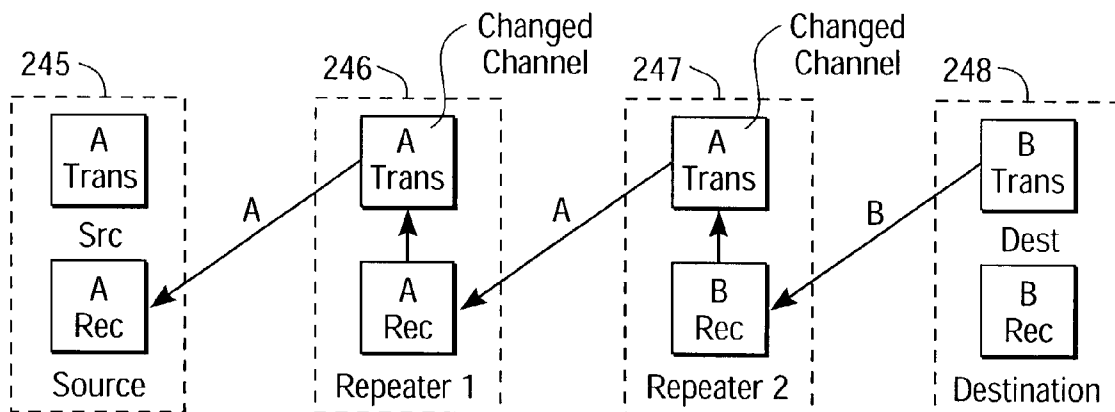


FIG. 27B

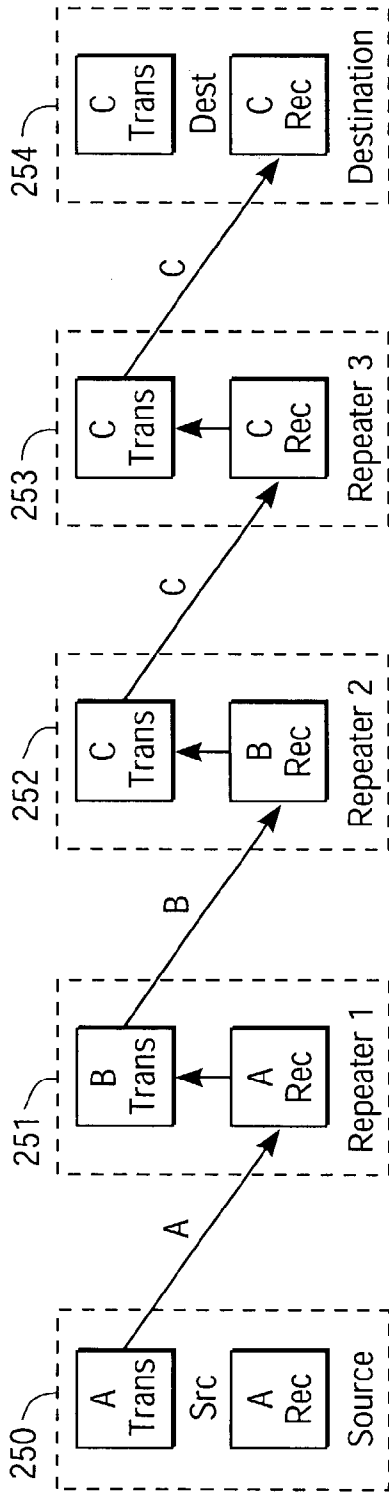


FIG. 28A

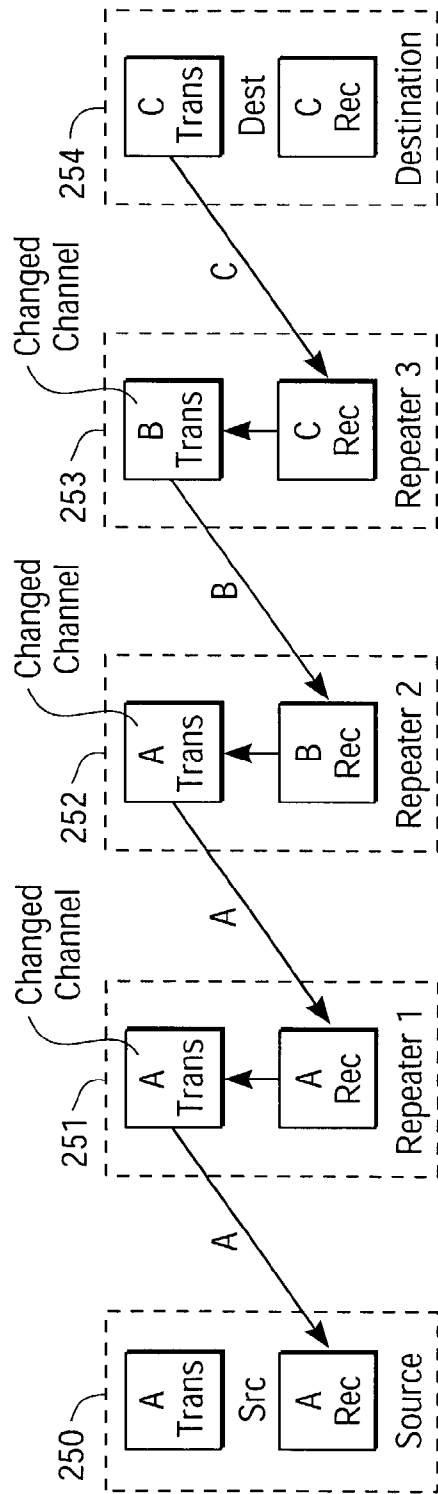


FIG. 28B

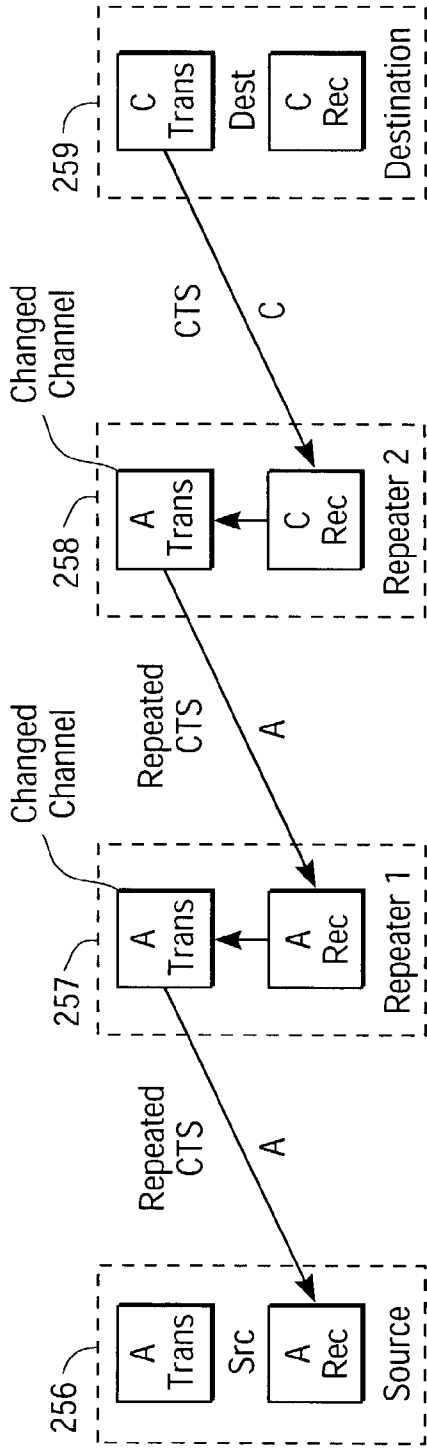


FIG. 29C

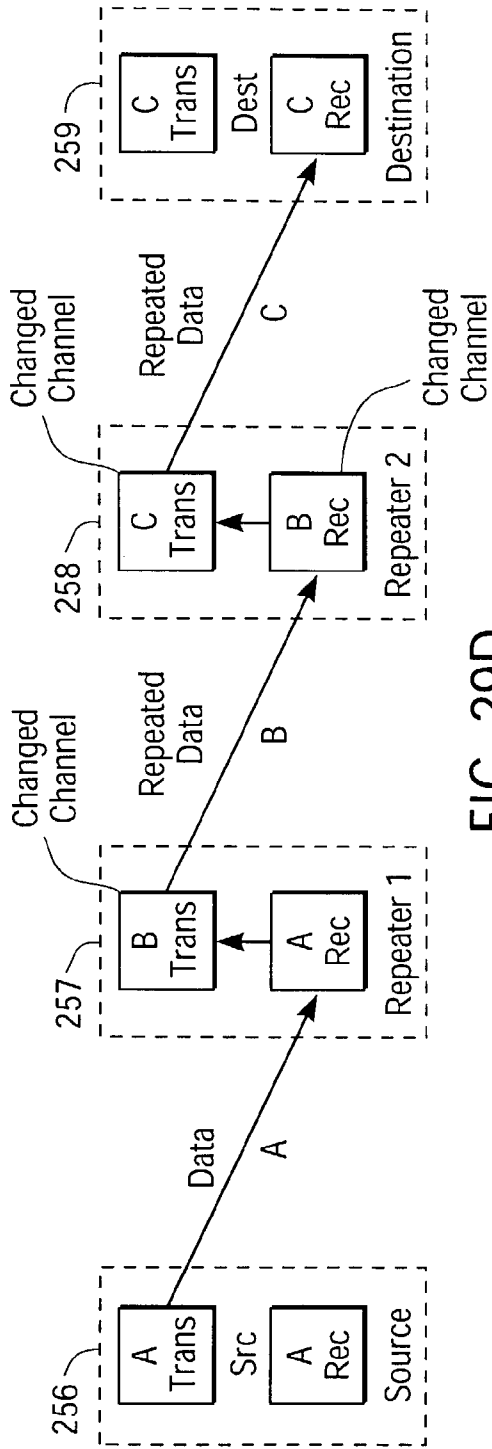


FIG. 29D

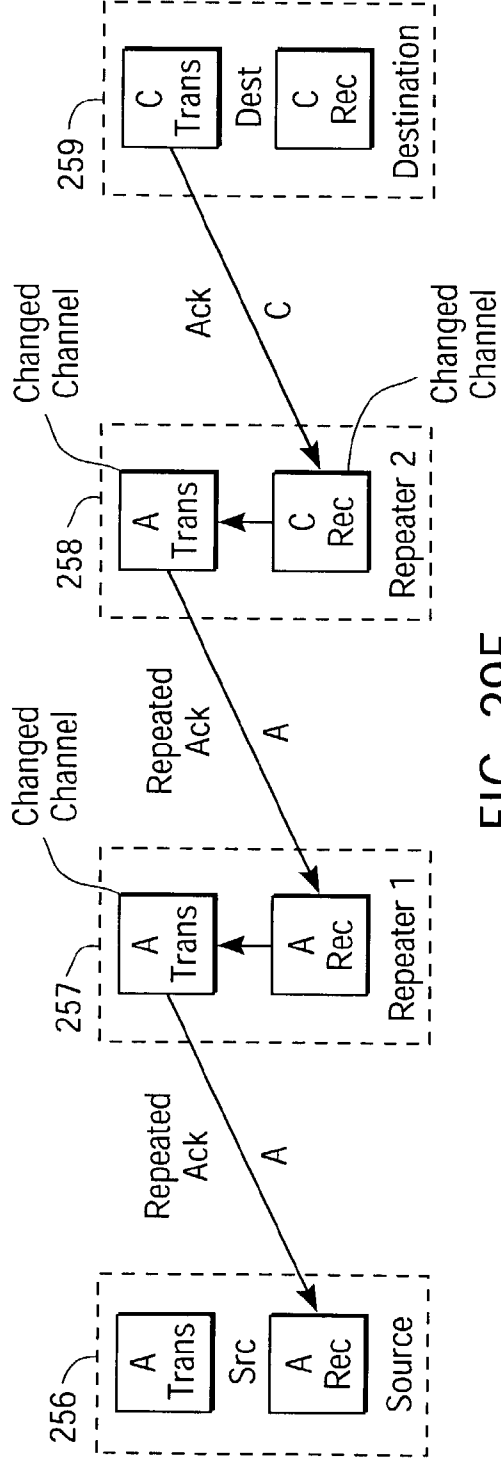


FIG. 29E

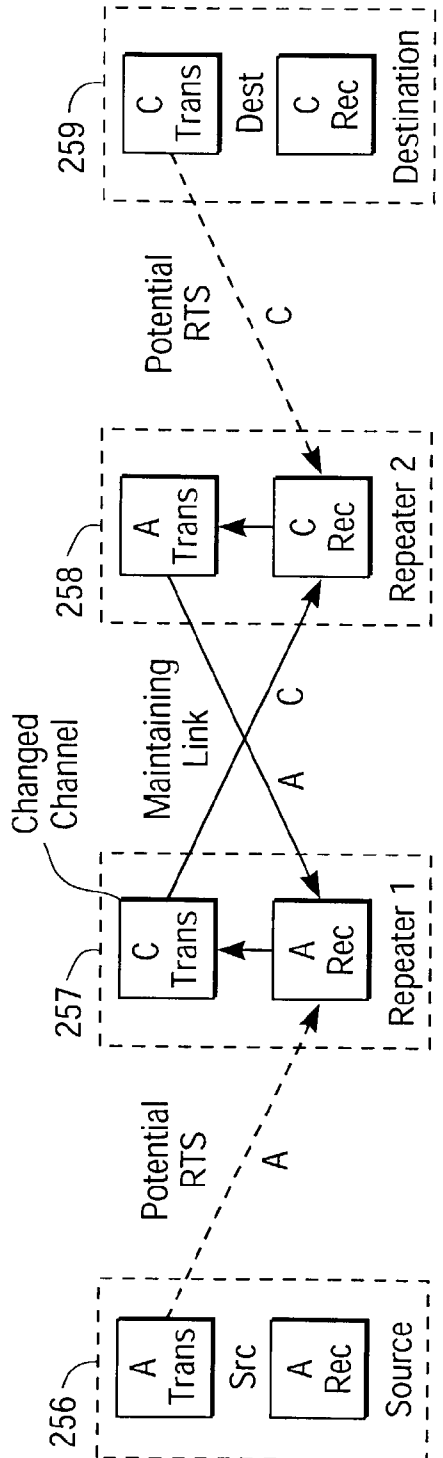


FIG. 29F

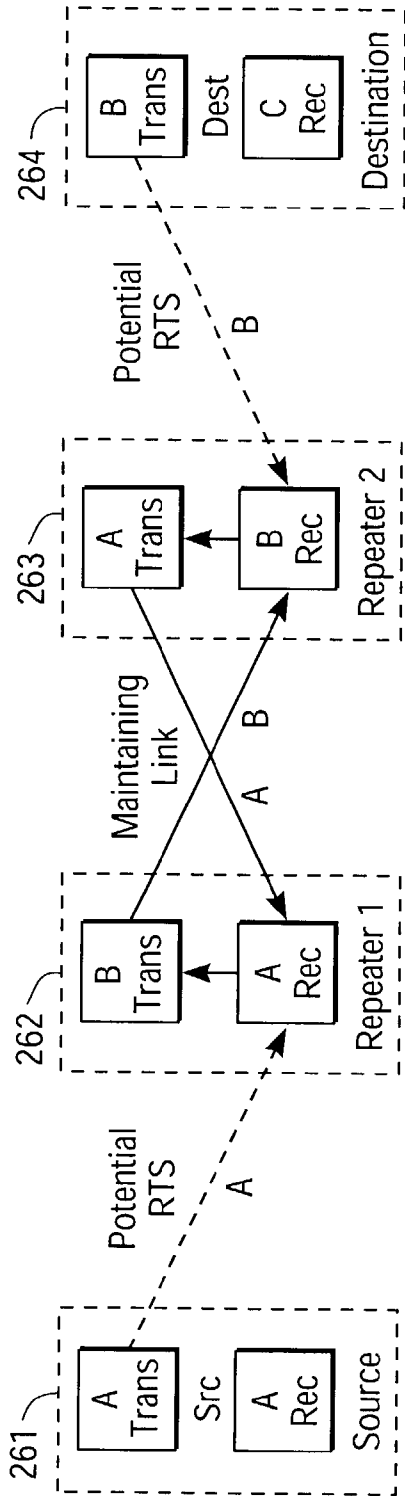


FIG. 30A

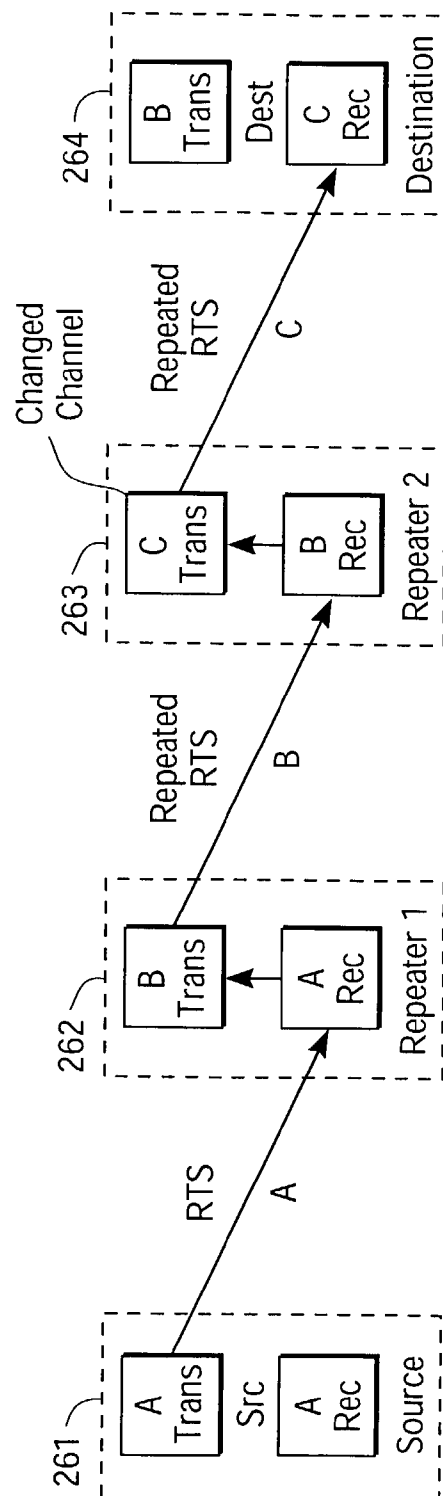


FIG. 30B

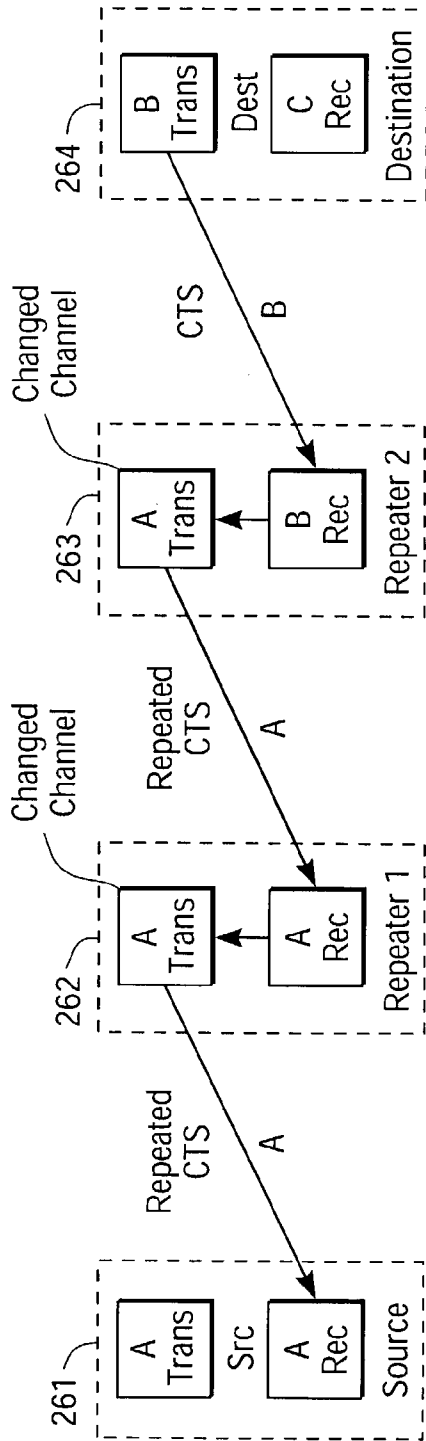


FIG. 30C

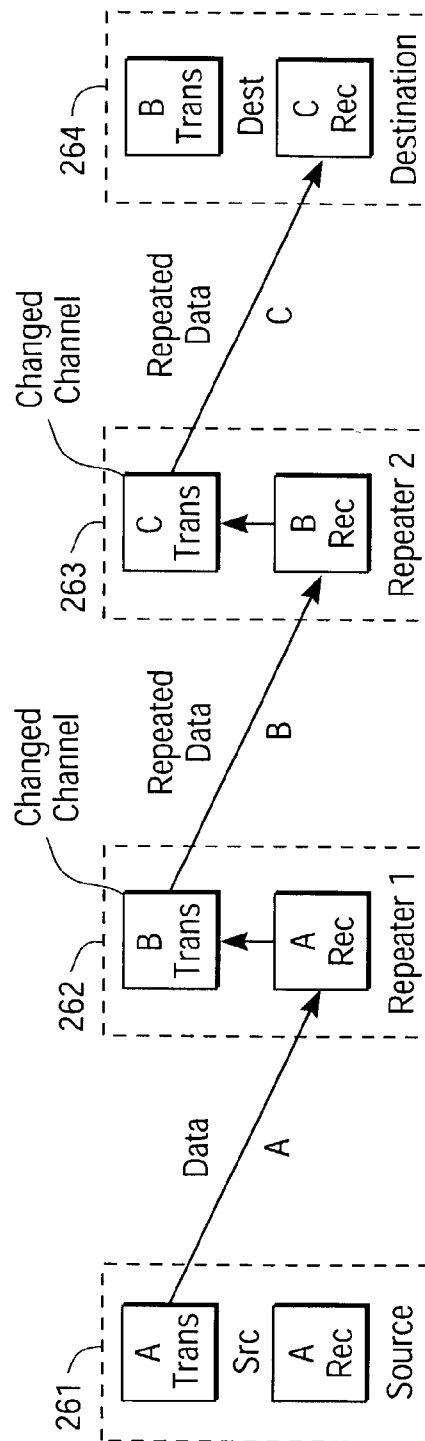


FIG. 30D

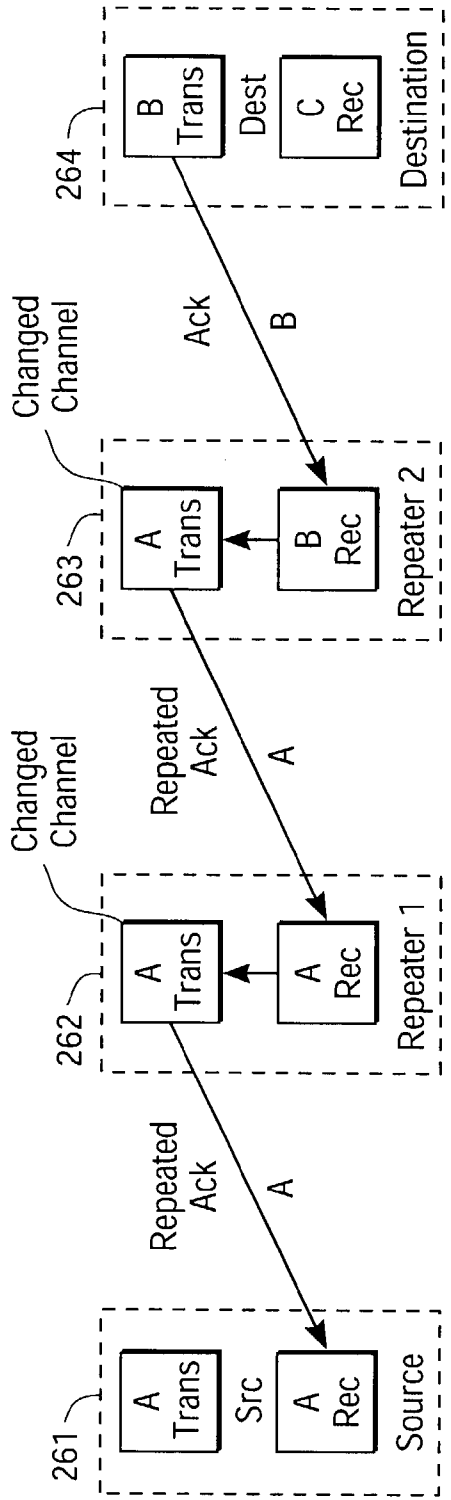


FIG. 30E

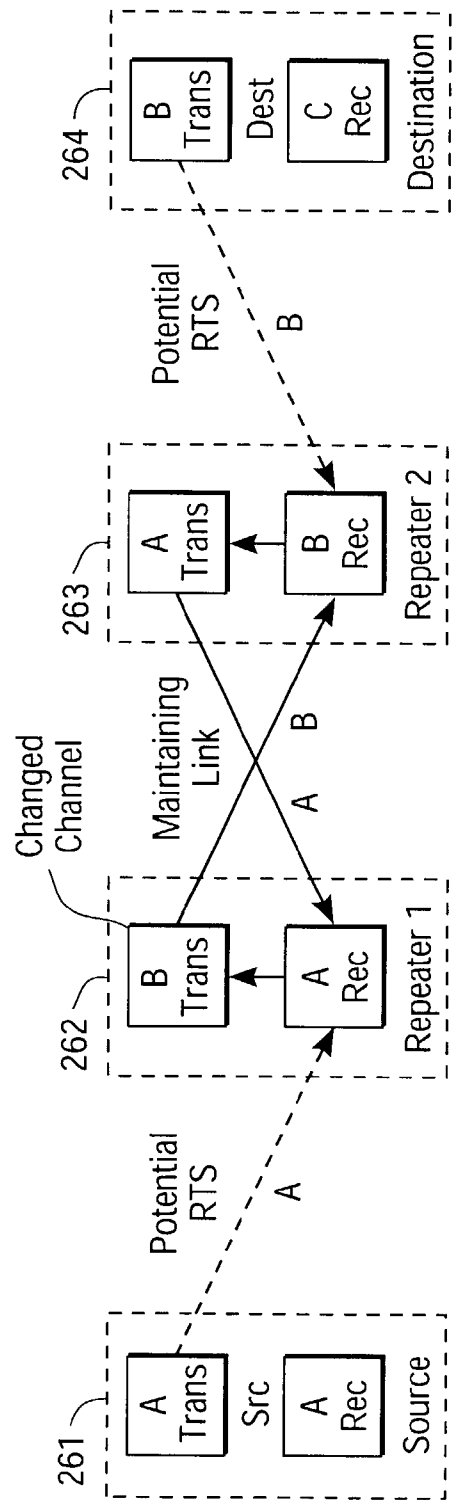


FIG. 30F

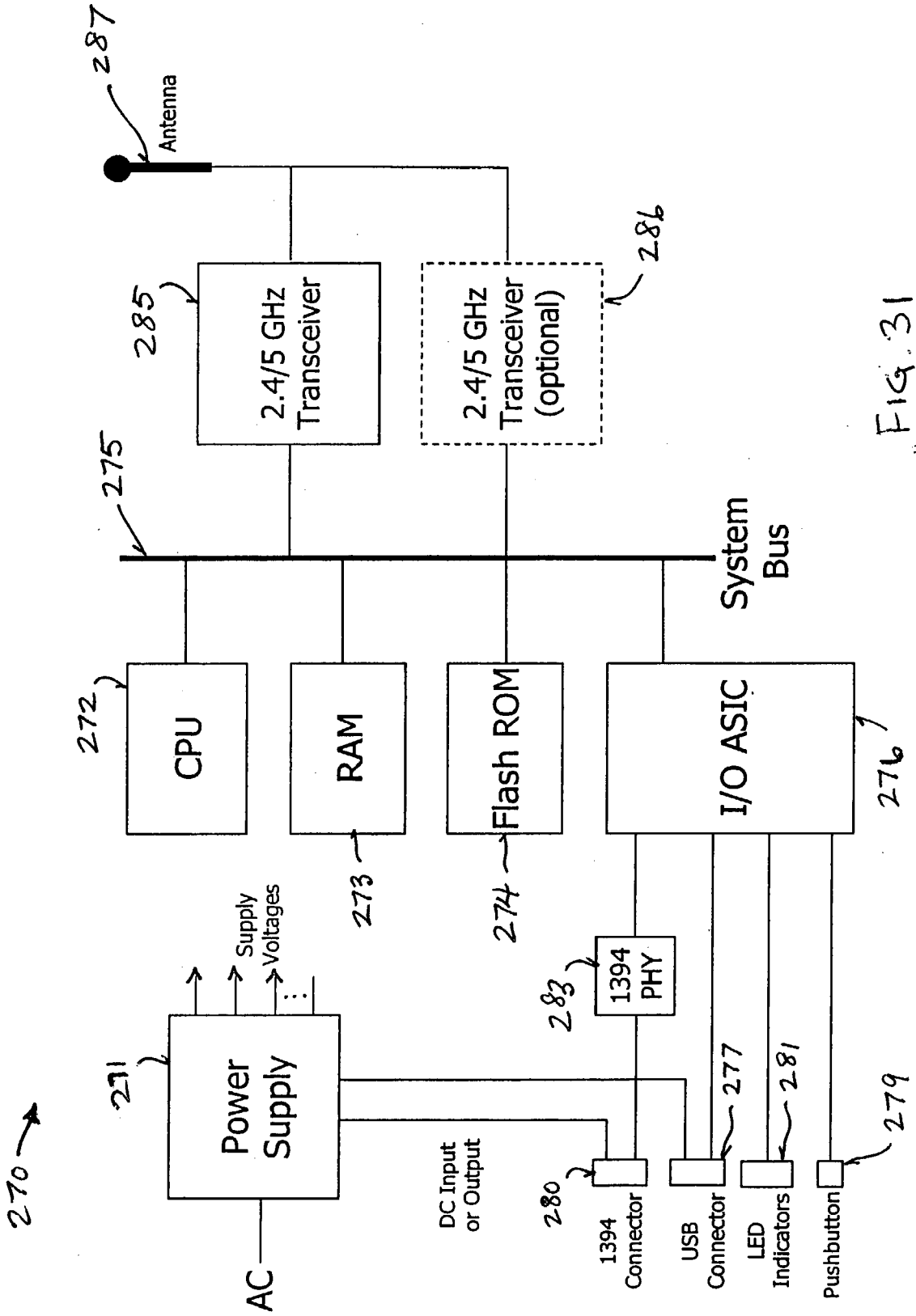


FIG. 31

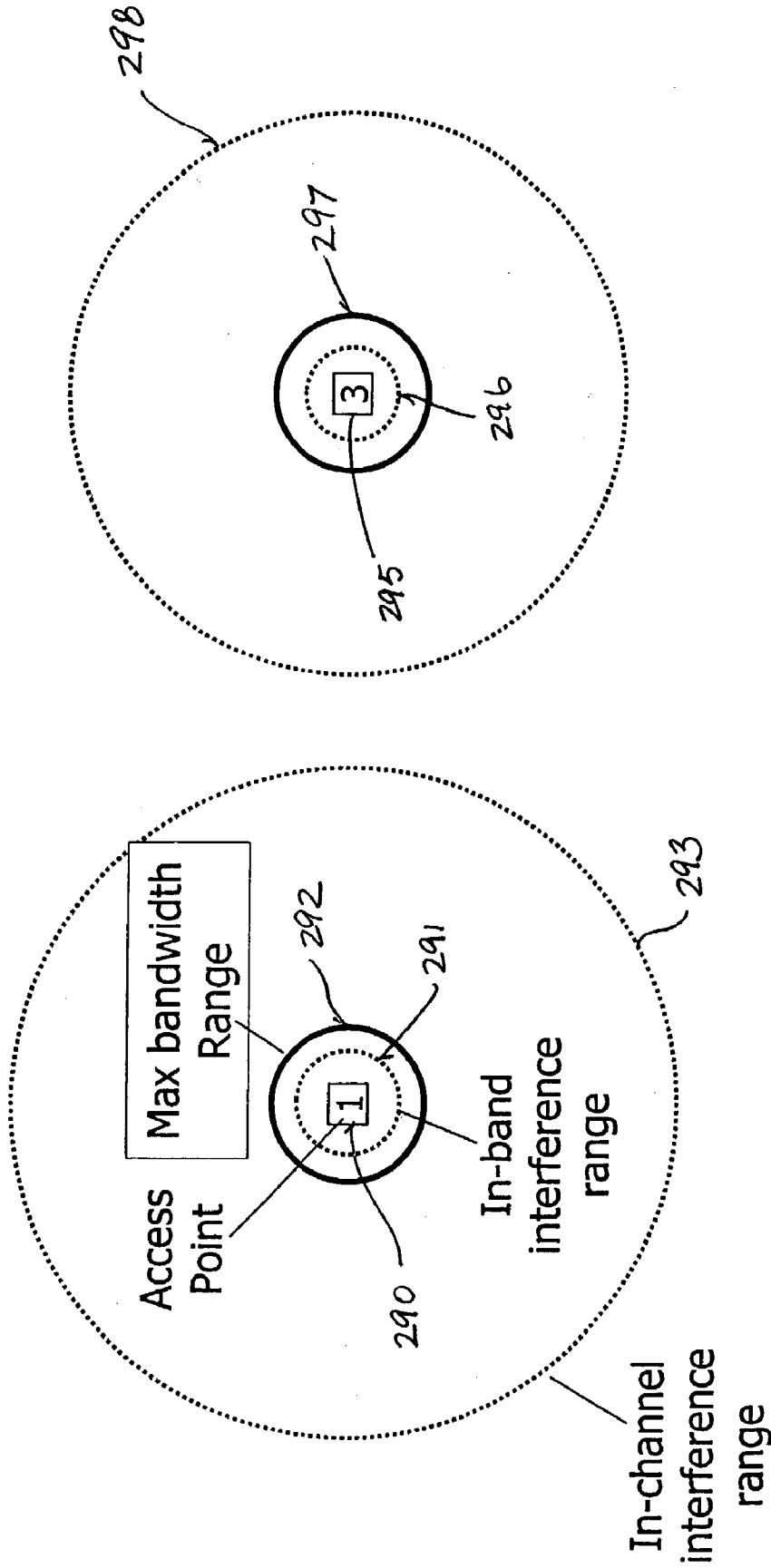


FIG. 32B

FIG. 32A

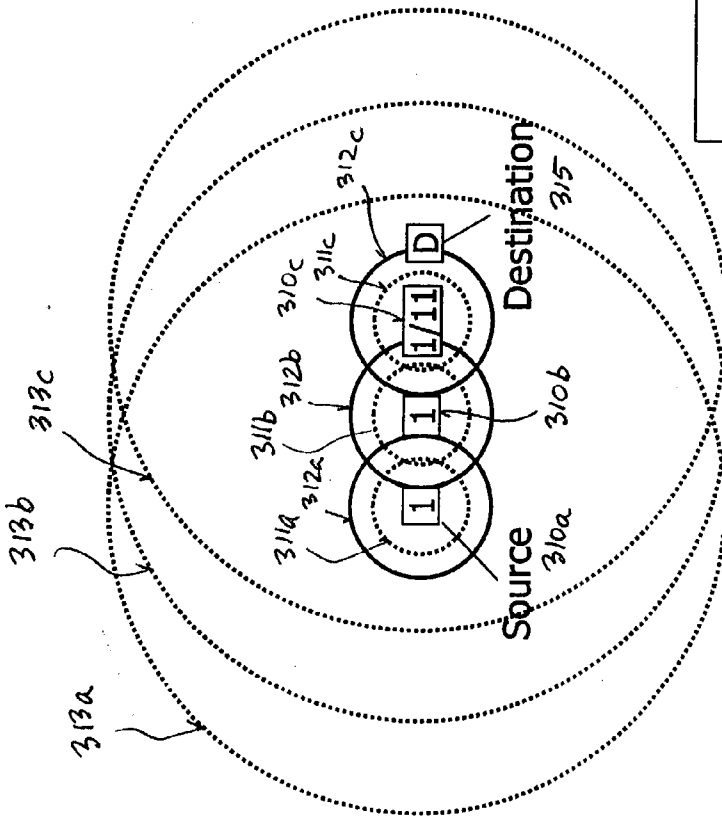


FIG 34B

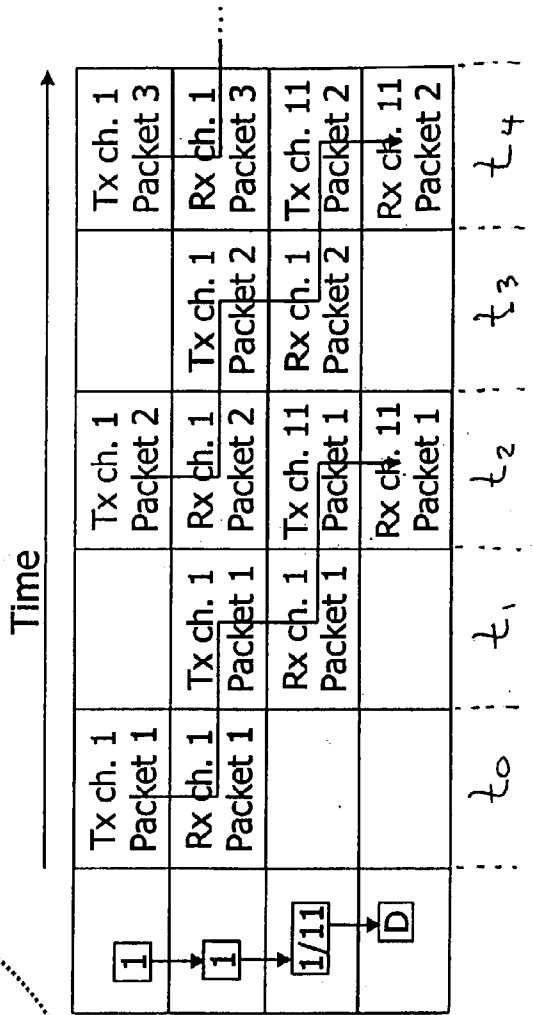


FIG 34A

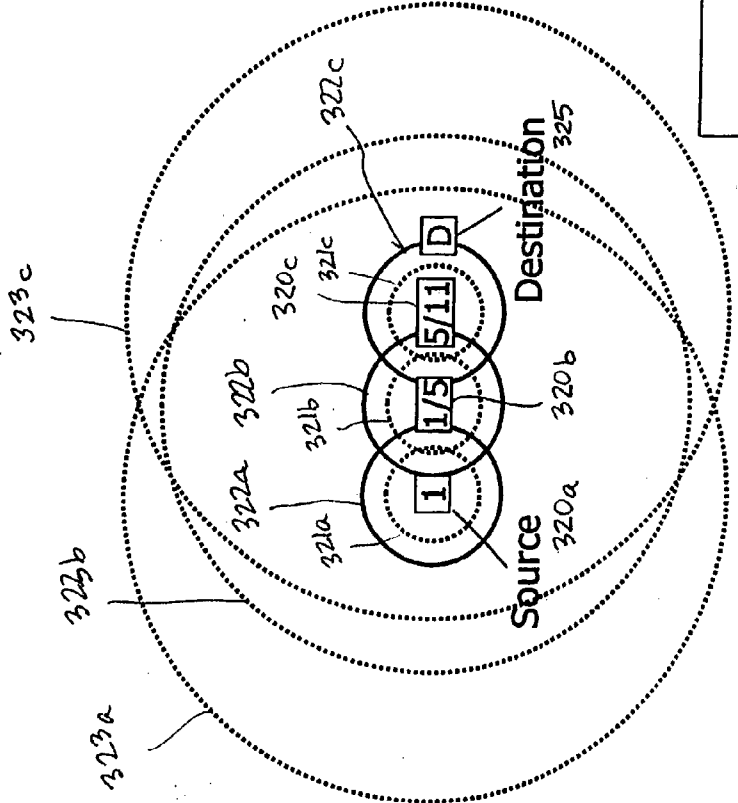


FIG 35 B

Time →

1	Tx ch. 1 Packet 1	Tx ch. 1 Packet 2	Tx ch. 1 Packet 3
1/5	Rx ch. 1 Packet 1	Rx ch. 1 Packet 2	Rx ch. 1 Packet 3
5/11	Rx ch. 5 Packet 1	Rx ch. 5 Packet 2	Rx ch. 5 Packet 2
D	Rx ch. 11 Packet 1	Rx ch. 11 Packet 1	Rx ch. 11 Packet 2
	Tx ch. 1 Packet 1	Tx ch. 5 Packet 2	Tx ch. 11 Packet 2

t_0 t_1 t_2 t_3 t_4

FIG 35 A

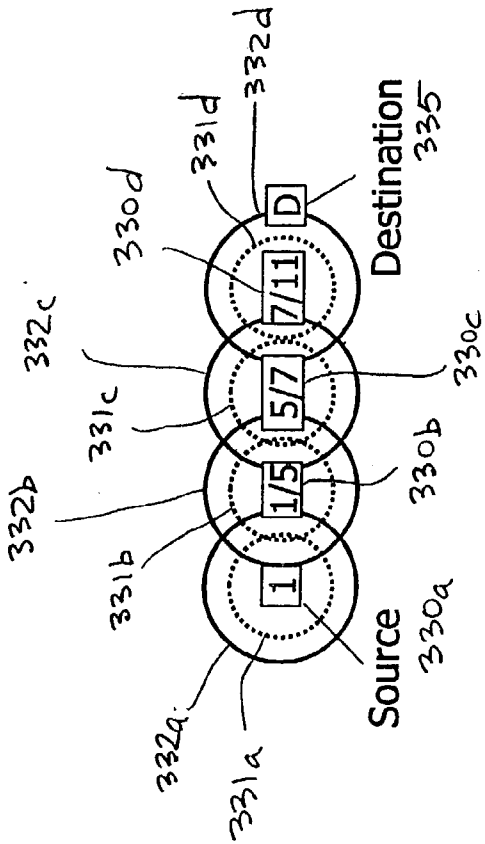


Fig 36 B

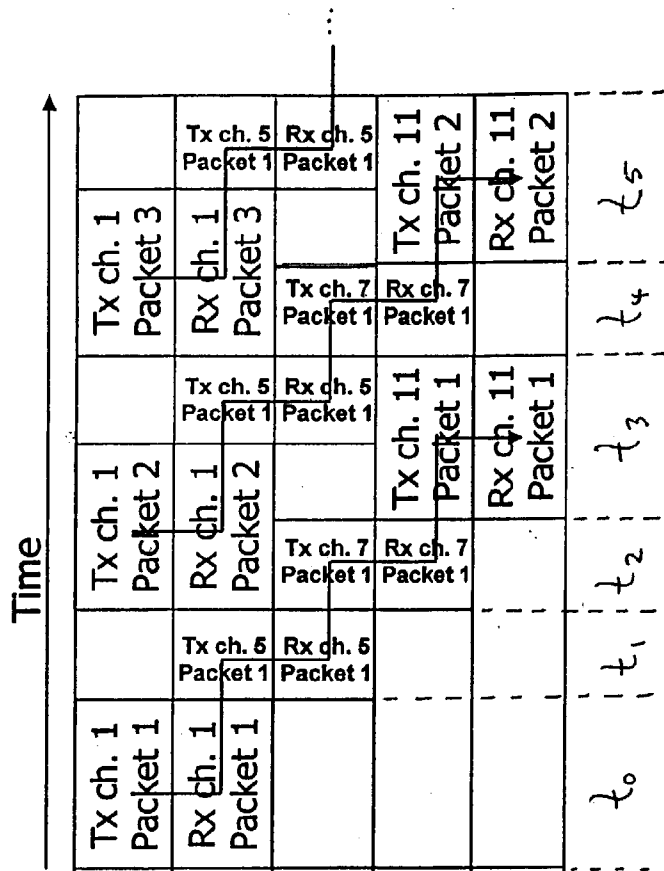


Fig 36 A

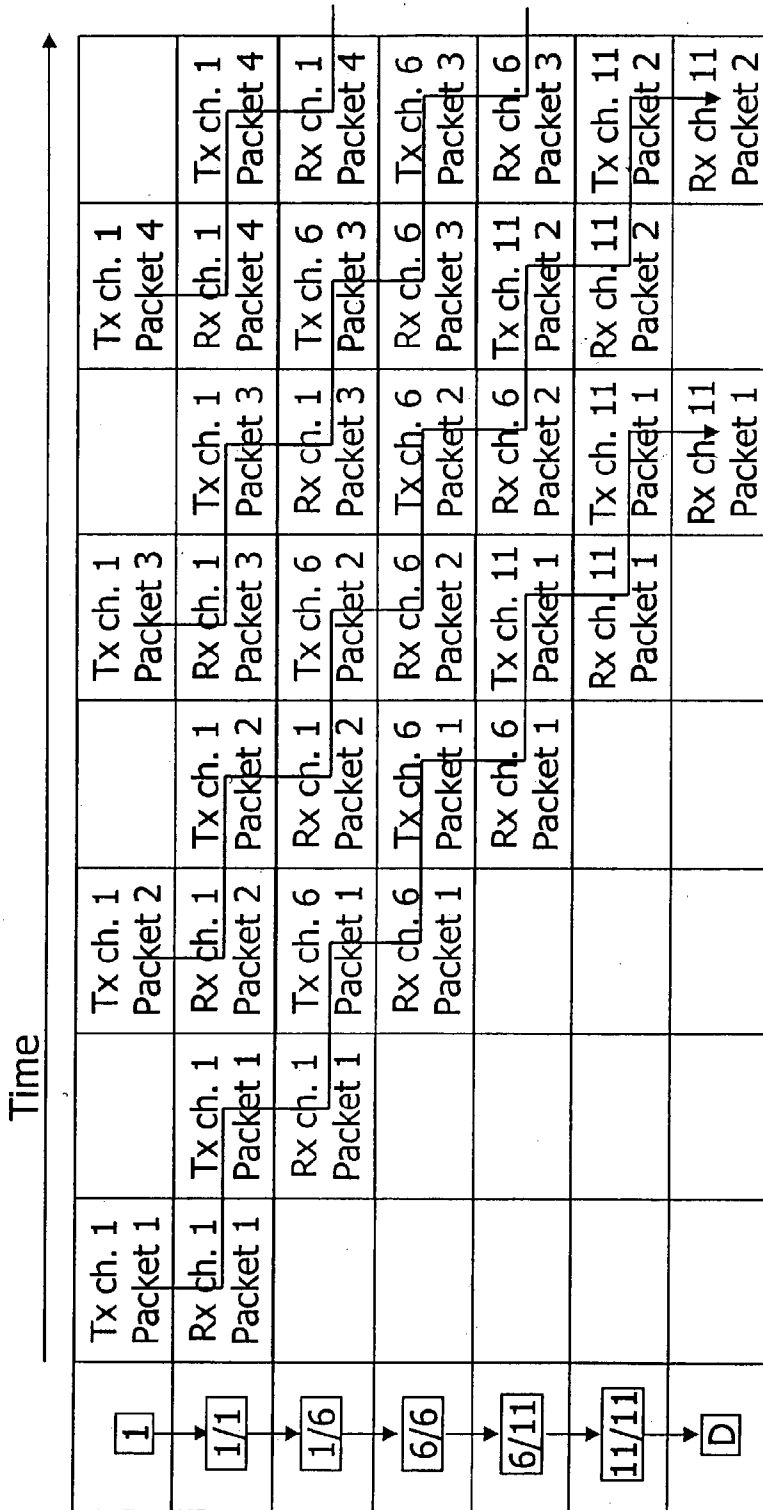


Fig 37A

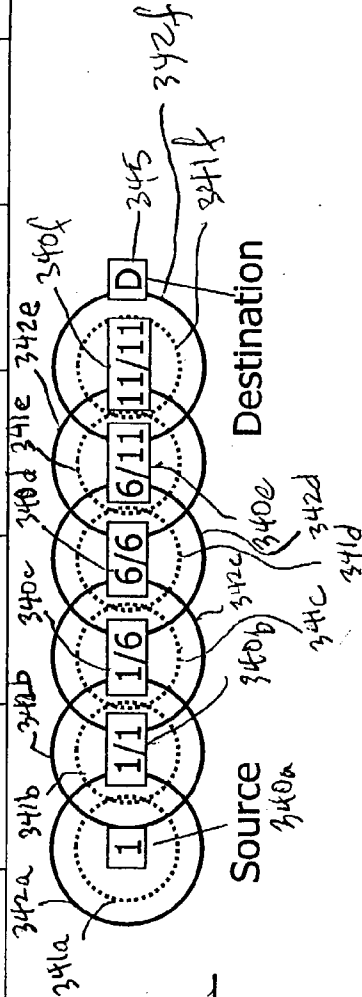


Fig 37B

SINGLE TRANSCIEVER ARCHITECTURE FOR A WIRELESS NETWORK

RELATED APPLICATIONS

[0001] This application is a continuation-in-part application of Ser. No. 10/407,445 filed Apr. 4, 2003, entitled, "SINGLE TRANSCIEVER ARCHITECTURE FOR A WIRELESS NETWORK", which itself is a continuation-in-part of Ser. No. 10/367,197 filed Feb. 14, 2003 entitled, "SELF-CONFIGURING, ADAPTIVE, THREE-DIMENSIONAL, WIRELESS NETWORK".

FIELD OF THE INVENTION

[0002] The present invention relates generally to wireless networks, and more particularly to methods and apparatus for configuring, expanding and maintaining a wireless network for home or office use.

BACKGROUND OF THE INVENTION

[0003] In recent years, wireless networks have emerged as flexible and cost-effective alternatives to conventional wired local area networks (LANs). At the office and in the home, people are gravitating toward use of laptops and handheld devices that they can carry with them while they do their jobs or move from the living room to the bedroom. This has led industry manufacturers to view wireless technologies as an attractive alternative to Ethernet-type LANs for home and office consumer electronics devices, such as laptop computers, Digital Versatile Disk ("DVD") players, television sets, and other media devices. Furthermore, because wireless networks obviate the need for physical wires, they can be installed relatively easily.

[0004] Wireless communication systems adapted for use in homes and office buildings typically include an access point coupled to an interactive data network (e.g., Internet) through a high-speed connection, such as a digital subscriber line (DSL) or cable modem. The access point is usually configured to have sufficient signal strength to transmit data to and receive data from remote terminals or client devices located throughout the building. For example, a portable computer in a house may include a PCMCIA card with a wireless transceiver that allows it to receive and transmit data via the access point. Data exchanged between wireless client devices and access points is generally sent in packet format. Data packets may carry information such as source address, destination address, synchronization bits, data, error correcting codes, etc.

[0005] A variety of wireless communication protocols for transmitting packets of information between wireless devices and access points have been adopted throughout the world. For example, in the United States, IEEE specification 802.11 and the Bluetooth wireless protocol have been widely used for industrial applications. IEEE specification 802.11, and Industrial, Scientific, and Medical (ISM) band networking protocols typically operate in the 2.4 GHz or 5 GHz frequency bands. In Europe, a standard known as HIPERLAN is widely used. The Wireless Asynchronous Transfer Mode (WATM) standard is another protocol under development. This latter standard defines the format of a transmission frame, within which control and data transfer functions can take place. The format and length of transmission frames may be fixed or dynamically variable.

[0006] Although traditional wireless networks work fairly well for residential Internet traffic running at data rates below 1 megabit per second (Mbps), transmission of high-bandwidth video programs is more problematic due to the much faster video data rates. High-bandwidth data transmissions can be degraded by the presence of structural obstacles (e.g., walls, floors, concrete, multiple stories, etc.), large appliances (e.g., refrigerator, oven, furnace, etc.), human traffic, conflicting devices (e.g., wireless phones, microwave ovens, neighboring networks, x10 cameras, etc.), as well as by the physical distance between the access point and the mobile terminal or other device. By way of example, an IEEE 802.11b compliant wireless transceiver may have a specified data rate of 11.0 megabits per second (Mbps), but the presence of walls in the transmission path can cause the effective data rate to drop to about 1.0 Mbps or less. Degradation of the video signal can also lead to repeated transmission re-tries, causing the video image to appear choppy. These practical limitations make present-day wireless technologies one of the most unreliable of all the networking options available for home media networks.

[0007] One proposed solution to this problem is to increase the number of access points in the home, with the various access points being interconnected by a high-speed cable wire. The drawback of this approach, however, is that it requires that cable wires be routed through the interior of the structure.

[0008] An alternative solution is to utilize wireless repeaters to extend coverage of the network throughout the building. For example, D-Link Systems, Inc., of Irvine, Calif. manufactures a 2.4 GHz wireless product that can be configured to perform either as a wireless access point, as a point-to-point bridge with another access point, as a point-to-multi-point wireless bridge, as a wireless client, or as a wireless repeater. As a wireless repeater, the product functions to re-transmit packets received from a primary access point. But the problem with these types of wireless repeaters is that they retransmit at the same frequency as the primary access point device. Consequently, because the primary access point and repeaters share the same channel, the bandwidth of the network is effectively reduced for each repeater installed. For example, if a data packet needs to be repeated (i.e., re-transmitted) three times in the same channel, each packet must wait until the previous packet has been repeated which means that the resulting bandwidth loss is 67%. So if the initial video transmission starts out at, say, 21 Mbps, the effective payload data rate at the receiver end is diminished to about 7 Mbps. Naturally, with more repeaters, more data hops are required, so the bandwidth loss becomes worse. This approach basically trades-off bandwidth for signal range—extending the range of the wireless network, but sacrificing valuable bandwidth in the process.

[0009] Still another attempted solution to the problem of wireless transmission of video data is to lower the bandwidth of the video through data compression. This technique involves compressing the video data prior to transmission, then decompressing the data after it has been received. The main drawback with compression/decompression techniques is that they tend to compromise the quality of the video image, which is unacceptable to most viewers. This approach also suffers from the problem of lost connections during transmission.

[0010] In view of the aforementioned shortcomings, there exists a strong need for a highly reliable wireless network (e.g., on a par with coaxial cable) that provides very high data rates (e.g., 30 Mbps) throughout the full coverage range of a home or building.

BRIEF DESCRIPTION OF THE DRAWINGS

[0011] The present invention will be understood more fully from the detailed description that follows and from the accompanying drawings, which however, should not be taken to limit the invention to the specific embodiments shown, but are for explanation and understanding only.

[0012] FIG. 1 is a conceptual diagram of a wireless network according to one embodiment of the present invention.

[0013] FIGS. 2A & 2B illustrate propagation characteristics for access points operating in the 2.4 GHz and 5 GHz frequency bands.

[0014] FIG. 3 is an example of wireless signal repeating in accordance with one embodiment of the present invention.

[0015] FIG. 4 is a chart illustrating pipelined data packet flow from source to destination in accordance with one embodiment of the present invention.

[0016] FIG. 5 is an example showing limitless data transmission range extension in accordance with another embodiment of the present invention.

[0017] FIG. 6 is an example of wireless signal repeating for 2.4 GHz traffic utilizing a 5 GHz repeater backbone in accordance with another embodiment of the present invention.

[0018] FIG. 7 is a chart illustrating pipelined data packet flow from source to destination in accordance with the embodiment of FIG. 6.

[0019] FIG. 8 is an example of wireless signal repeating for 2.4 GHz traffic utilizing a 5 GHz repeater backbone, with the source and destination on the same channel in accordance with yet another embodiment of the present invention.

[0020] FIG. 9 is a chart illustrating pipelined data packet flow from source to destination in accordance with the embodiment of FIG. 8.

[0021] FIG. 10 is a perspective view of a wireless repeater in accordance with one embodiment of the present invention.

[0022] FIG. 11 is a circuit block diagram of the internal architecture of the wireless repeater shown in FIG. 10.

[0023] FIG. 12 illustrates three repeaters configured in a wireless network according to one embodiment of the present invention.

[0024] FIG. 13 is a diagram that shows the unlimited range at full bandwidth range of one embodiment of the present invention.

[0025] FIGS. 14A & 14B show a plan view and a side elevation view, respectively, of a floor plan for a building installed with a wireless network according to one embodiment of the present invention.

[0026] FIG. 14C illustrates the repeater topology for the first floor shown in FIGS. 14A & 14B.

[0027] FIGS. 15A & 15B show plan and side elevation views, respectively, of the wireless network of FIGS. 14A & 14B, but with a disturbance.

[0028] FIGS. 16A & 16B illustrate the network of FIGS. 15A and 15B after reconfiguration to overcome the disturbance.

[0029] FIGS. 17A & 17B illustrate another example of channel conflict in a wireless network implemented according to one embodiment of the present invention.

[0030] FIGS. 18A & 18B illustrate the network of FIGS. 17A and 17B after channel reconfiguration.

[0031] FIG. 19 is a floor plan showing two simultaneous wireless networks operating in a building according to one embodiment of the present invention.

[0032] FIG. 20 shows a wireless network according to another embodiment of the present invention.

[0033] FIG. 21 is a circuit block diagram of the basic architecture of a DBS tuner according to one embodiment of the present invention.

[0034] FIG. 22 is a circuit block diagram of the basic architecture of a cable television tuner in accordance with one embodiment of the present invention.

[0035] FIG. 23 is a circuit block diagram of the basic architecture of a wireless receiver in accordance with one embodiment of the present invention.

[0036] FIG. 24 is an architectural block diagram of a wireless repeater according to another embodiment of the present invention.

[0037] FIG. 25 is an architectural block diagram of a wireless receiver in accordance with another embodiment of the present invention.

[0038] FIGS. 26A & 26B illustrate a prior art approach to access point transmission repeating.

[0039] FIGS. 27A & 27B show examples of access point repeating in a network utilizing two repeaters in accordance with one embodiment of the present invention.

[0040] FIGS. 28A & 28B show examples of access point repeating in a network utilizing three repeaters in accordance with another embodiment of the present invention.

[0041] FIGS. 29A-29F illustrate an exemplary transaction across a wireless network utilizing non-access point repeaters in accordance with yet another embodiment of the present invention.

[0042] FIGS. 30A-30F illustrate an exemplary transaction across a wireless network utilizing access point repeaters in accordance with still another embodiment of the present invention.

[0043] FIG. 31 is an architectural block diagram of a wireless repeater according to yet another embodiment of the present invention.

[0044] FIG. 32A & 32B is another illustration showing propagation characteristics for access points operating in the 2.4 GHz and 5 GHz frequency bands.

[0045] FIG. 33A is an example of wireless signal repeating in accordance with another embodiment of the present invention.

[0046] FIG. 33B is a chart illustrating pipelined data packet flow from source to destination in accordance with the embodiment of FIG. 33A.

[0047] FIG. 34A is an example of wireless signal repeating in accordance with still another embodiment of the present invention.

[0048] FIG. 34B is a chart illustrating pipelined data packet flow from source to destination in accordance with the embodiment of FIG. 34A.

[0049] FIG. 35A is an example of wireless signal repeating in accordance with yet another embodiment of the present invention.

[0050] FIG. 35B is a chart illustrating pipelined data packet flow from source to destination in accordance with the embodiment of FIG. 35A.

[0051] FIG. 36A is an example of wireless signal repeating in accordance with a further embodiment of the present invention.

[0052] FIG. 36B is a chart illustrating pipelined data packet flow from source to destination in accordance with the embodiment of FIG. 36A.

[0053] FIG. 37A is an example of wireless signal repeating in accordance with another embodiment of the present invention.

[0054] FIG. 37B is a chart illustrating pipelined data packet flow from source to destination in accordance with the embodiment of FIG. 37A.

DETAILED DESCRIPTION

[0055] The present invention is a wireless local area network (WLAN) that utilizes cellular techniques to extend the range of transmission without degrading bandwidth. The wireless network of the present invention is thus ideally suited for transmitting video programs (e.g., digitally-encoded video broadcast services, pay-per-view television, on-demand video services, etc.) throughout a house or other building, thereby creating a "media-live" environment.

[0056] In the following description numerous specific details are set forth, such as frequencies, circuits, configurations, etc., in order to provide a thorough understanding of the present invention. However, persons having ordinary skill in the communication arts will appreciate that these specific details may not be needed to practice the present invention. It should also be understood that the basic architecture and concepts disclosed can be extended to a variety of different implementations and applications. Therefore, the following description should not be considered as limiting the scope of the invention.

[0057] With reference to FIG. 1, a wireless home media network 10 according to one embodiment of the present invention comprises a source video access point 11 coupled to a broadband connection. By way of example, the broadband connection may provide video content from a Direct Broadcast Satellite (DBS) or digital cable service provider. Additional wireless access points (simply referred to as

"access points" or "repeaters" in the context of the present application, unless specifically described otherwise) may be physically located in a distributed manner throughout the home or building to provide connectivity among a variety of home media devices configured for wireless communications. As shown in FIG. 1, these home media devices may include a laptop personal computer 12, DVD player 13, wireless-ready television 14, and wireless-linked receiver 15 coupled to either a standard definition or high-definition television (SDTV/HDTV) 16. Other types of devices, such as personal digital assistants (PDAs), may also be coupled to network 10 for receiving and/or transmitting data. Practitioners in the art will appreciate that many client media devices such as personal computers, televisions, PDAs, etc., have the capability of detecting the operating frequency of the access point within a particular micro-cellular transmission range.

[0058] Commands for one or more of these home media devices may be generated using a remote control unit 17, either through infrared (IR) or radio frequency (RF) signals. In one embodiment, wireless network 10 provides reliable, full home coverage at throughputs supporting multiple simultaneous video streams, e.g., two HDTV streams at approximately 30 Mbps; eight SDTV streams at about 16 Mbps.

[0059] According to the present invention a plurality of access points is utilized in a wireless network to provide relatively short transmission ranges that preserve bandwidth and achieve high reliability. The wireless network of the present invention implements a three-dimensional ("3-D") topology in which communications between an access point and mobile terminals or client media devices in a particular region occur at a frequency which is different than the communication frequency of a neighboring region. In specific embodiments, the 2.4 GHz and 5 GHz frequency bands are utilized for wireless transmissions. In the United States, for instance, the 2.4 GHz band provides three non-overlapping channels, whereas the 5 GHz band provides twelve non-overlapping channels for simultaneous transmission traffic. The wireless network of the present invention achieves full range coverage in the home without bandwidth loss by utilizing a different channel for each data packet hop. This feature allows repeater data packets to overlap in time, as discussed in more detail below.

[0060] FIG. 2A is a diagram illustrating the two-dimensional propagation characteristics through open air associated with an access point 20 operating in the 2.4 GHz band and transmitting on a particular channel, i.e., channel 1. Inner circle 21 represents the range of maximum bandwidth, and outer circle 22 represents the range at which the signal from access point 20 ceases to interfere with other signals in the same channel. FIG. 2B shows an access point 30 operating in the 5 GHz band with maximum bandwidth and interference ranges represented by circles 31 and 32, respectively. As can be seen, both access points 20 and 30 have a relatively short range at maximum bandwidth, but have a fairly wide interfering signal range. Notably, access point 30 has a shorter interference range than access point 20.

[0061] FIG. 3 is an example of wireless signal repeating in accordance with one embodiment of the present invention. In the embodiment of FIG. 3, each of the access points 20a-20c transmits on a different channel. For instance,

access point **20a** is shown operating on channel #1 in the 2.4 GHz band; access point **20b** operates on channel #6; and access point **20c** operates on channel #11 in the same band. The inner circles **21a-21c** each denotes the ranges of maximum bandwidth associated with access points **20a-20c**, respectively. (The outer circles **22a-22c** denotes the same-channel interference signal range associated with access points **20a-20c**, respectively.) As can be seen, each of the access points is advantageously located at a distance within the maximum bandwidth range of its nearest neighboring access point. Similarly, the destination media device **25** is disposed within the maximum bandwidth range of its nearest access point **20c**.

[0062] In the example of **FIG. 3**, access points **20b** and **20c** function as signal repeaters to facilitate transmission of data from source access point **20a** to destination device **25**. To prevent loss of bandwidth during transmission, each of the access points **20a-20c** repeats transmission of data packets on a different frequency channel than any of its neighboring access points within signal interference range. Access points located beyond the interference range of a channel may reuse that same channel. In this case, a source data packet **1** is transmitted by access point **20a** on channel #1. Access point **20b** repeats transmission of this data packet on channel #6. Access point **20c** again repeats transmission of data packet **1**; this time on channel #11. Destination media device **25** receives data packet **1** from access point **20c** on channel #11.

[0063] After the transmission of data packet **1**, access point **20a** may immediately transmit a second source data packet ("packet **2**"), followed by a third source data packet, a fourth data packet, and so on. Each of these data packets are repeated across the network in a pipeline manner by access points **20b** and **20c**, as shown in **FIG. 4**. Pipelining of data packets across channels facilitates transmission of video data without loss of bandwidth. The wireless network of the present invention has no limitation on how far the transmission of data can extend, as long as there are a sufficient number of channels available.

[0064] In the 2.4 GHz band, three channels allows for three hops in any direction (including the initial transmission from the source) in three-dimensional space at maximum bandwidth. Since each hop normally can extend about 50 feet at maximum bandwidth, three hops on three different channels (one source plus two repeaters) can cover a distance of about 150 feet from source to destination. In the license-free 5 GHz band (e.g., 5725 MHz to 5850 MHz), there are currently twelve channels with upwards of 54 Mbps of bandwidth available on each channel in good transmission conditions. As with the 2.4 GHz band, each hop in the 5 GHz band will typically extend about 50 feet at maximum bandwidth, but the large number of channels permits hops to extend indefinitely. That is, in a wireless network operating in the 5 GHz band according to the present invention, repeaters extend far enough for channel reuse. This means that hops can extend the range of transmission from source to destination without limitation.

[0065] **FIG. 5** is an example showing a network configuration in which each hop extends about 50 feet, so that ten hops cover about 500 feet. In this example, after ten hops, any channel beyond its interference range may be reused. Note that the smaller inner circles representing the range of

maximum bandwidth around the access points that operate on the same channel frequency (e.g., channel #1) are separated by a considerable distance (~400 feet). Note that each access point is shown spaced-apart from its nearest neighboring access point by a distance less than the maximum bandwidth range (i.e., small circle) of its nearest neighbor. At the same time, any two access points transmitting on the same channel are shown separated from each by a distance greater than the interference signal range. Access points that re-use the same channel are separated by a distance greater than their respective signal interference ranges. The large spatial separation between access points using the same frequency channel means that transmission problems due to channel interference between access points operating on the same channel are virtually nonexistent in the wireless network of the present invention.

[0066] In addition to neighboring access points operating on different channels, different frequency bands may also be used during data transmission across the wireless network of the present invention. In an alternative embodiment, for instance, 5 GHz repeaters may be utilized to form an arbitrary length backbone for 2.4 GHz data traffic. This situation is illustrated in the example of **FIGS. 6 & 7**, which shows source access point **40a** transmitting data packets to a 2.4 GHz destination **55** using 5 GHz repeaters **40b & 40c**. Note that source point **40a** and repeater **40d** (transmitting to destination device **55**) both operate in the 2.4 GHz band, but utilize different channels, i.e., channels #6 & # 11, respectively, to prevent bandwidth loss.

[0067] Another possibility is to use a 5 GHz device at the destination and a 2.4 GHz access point at the source or vice-versa. As long as the network is configured for communications with source-to-destination frequency band transitions of 2.4 GHz to 5 GHz, or 5 GHz to 2.4 GHz, or 2.4 GHz to 2.4 GHz on different channels (all utilizing 5 GHz for repeaters in-between), the network can provide an arbitrary length backbone for 2.4 gigahertz traffic, despite the fact there are only three 2.4 GHz channels available. In other words, the wireless network of the present invention is not limited to data transmissions confined to a single frequency band.

[0068] It is also possible to configure a wireless network in accordance with the present invention where the source and destination devices both operate at 2.4 GHz using the same channel. Such an embodiment is shown in the conceptual diagram of **FIG. 8** and the associated transmission chart of **FIG. 9**, wherein source access point **40a** and repeater **40d** associated with destination media device **55** both operate in the 2.4 GHz band on channel #6. Repeaters **40b** and **40c** operate in the 5 GHz band on channel #1 and #2, respectively. Although this particular embodiment has a penalty of 50% bandwidth loss, the network still may be extended to arbitrary length with no additional bandwidth loss, regardless of the total distance covered. It is appreciated that the 50% bandwidth loss in this embodiment results from the need to stagger the data packet transmissions, as shown in the chart of **FIG. 9**, to avoid interference between the packet transmission by access point **40a** and the packet transmission by repeater **40d**.

[0069] With reference now to **FIG. 10**, there is shown a perspective view of a wireless repeater unit **60** configured for installation in an ordinary electrical outlet in accordance

with one embodiment of the present invention. **FIG. 11** is a circuit block diagram of the internal architecture of repeater unit **60**. Repeater unit **60** comprises a transformer/power supply **61** that provides supply voltages to the various internal electronic components, which include a CPU **62**, a RAM **63**, a Flash ROM **64**, and input/output application specific integrated circuitry (I/O ASIC) **66**, each of which is shown coupled to a system bus **65**. Also coupled to system bus **65** are a plurality of transceivers, which, in this particular embodiment, include a 5 GHz "upstream" transceiver **74**, a 5 GHz "downstream" transceiver **75**, and a 2.4 GHz transceiver **76**. Each of transceivers **74-76** is coupled to an antenna **77**. Additional transceivers operating at different frequencies may be included in repeater unit **60**.

[0070] CPU **62** controls the re-transmission of the received data packets, utilizing RAM **63** for both program execution, and for buffering of the packets as they are received from the upstream side, i.e., nearest the source, before they are sent out to the downstream side, i.e., toward the destination. Flash ROM **64** may be used to hold software and encryption key information associated with secure transmissions, for example, to insure that the network users are authorized users of satellite or cable subscriber services.

[0071] In the embodiment of **FIG. 11**, a 1394 connector interface **70** provides a Firewire® port (coupled through a 1394 PHY physical interface **73**) to I/O ASIC **66**. Also coupled to I/O ASIC **66** is a pushbutton switch **69** and an LED indicator panel **71**. Pushbutton switch **69** may be utilized in conjunction with interface **70** to authenticate repeater unit **60** for use in the network after the wireless receiver or source access point has been initially installed. These aspects of the present invention will be described in more detail below.

[0072] By way of example, **FIG. 10** further shows that the upstream repeater in the network comprises a wireless transceiver that operates in compliance with IEEE specification 802.11a to run with an effective throughput of 36 Mbps utilizing large packets of approximately 2500 bytes each. Persons of skill in the art will understand that IEEE 802.11a is a standard that permits use at more than one channel at a time. On the downstream side is another repeater that comprises a 5 GHz band, 802.11a wireless transceiver that operates on a different frequency channel. It should be understood that the present invention is not limited to these particular transceiver types or frequency bands. Other embodiments may utilize other types of transceivers; for instance, transceivers that operate in compliance with specifications that are compatible with IEEE specification 802.11a, 802.11b, or 802.11g, or which otherwise provide for wireless transmissions at high-bandwidths. For the purposes of the present application, IEEE specification 802.11a, 802.11b, 802.11g, and Industrial, Scientific, and Medical (ISM) band networking protocols are denoted as "802.11x".

[0073] Other non-ISM bands wireless network protocols could be utilized as well. For example, instead of utilizing 802.11a transceivers in the 5 GHz band, the network of the present invention could be implemented using transceivers compatible with HIPERLAN2, which runs with an effective throughput of about 42 Mbps.

[0074] Transmissions between repeater unit **60** and client wireless media devices located nearby are shown at the top

of **FIG. 10**. In this example, a 36 Mbps effective throughput link is provided through an 802.11g 2.4 GHz transceiver that may be used to connect to any local devices operating in the 2.4 GHz band. An 802.11a compatible transceiver may also be utilized to connect to local media devices operating in the 5 GHz band. In a network configured with multiple wireless repeaters, each wireless repeater may provide wireless communications to one or more local devices. **FIG. 12**, for example, illustrates three repeaters **60a-60c** configured in a network wherein each repeater may provide a communication link to nearby wireless devices, such as laptop computers or wireless televisions, etc. Thus, by properly distributing repeater units throughout a home or office building, media content may be delivered at high bandwidths to client devices located anywhere in the home or office environment.

[0075] Repeater units **60** may be installed in the wireless network of the present invention after the source access point (e.g., source video receiver) has been made operational. In one embodiment, a new repeater unit **60** is first connected to the source access point or an existing repeater (one that is already plugged into an outlet and coupled to the wireless network) using a Firewire cable. The Firewire cable is connected between the existing repeater or source access point and the new repeater. Power is provided over the Firewire cable from the existing repeater or access point to the new repeater to activate the internal circuitry of the new repeater, so that encryption key information may be exchanged to allow the new repeater to securely connect to the network. Execution of program instructions for the exchange of encryption information may be initiated by the person performing the installation pressing pushbutton switch **69**, located on the front side of repeater unit **60** in **FIG. 10**.

[0076] After the exchange of encryption information has completed, the Firewire cable between the two devices may be disconnected. The repeater unit with the newly activated encryption key may then be plugged into an electrical outlet in any location of the home or building where the user wants the network to extend.

[0077] Once repeater unit **60** is plugged in, it immediately outputs an indication of received signal strength on LED indicator panel **71**. LED indicator panel **71** provides an indication of transmission signal strength to the upstream receiver, and may be advantageously used to locate repeater unit **60** to extend the network in a home or building. If, for example, the LED output indicates a strong signal, the installer may wish to remove the repeater unit from its present wall outlet location to a location farther away from the nearest existing repeater or access point. If, upon moving to a new location, LED indicator panel **71** outputs a "weak" or a "no signal" reading, this means that the new repeater is too far away from existing connection points of the network. In either case, the installer should move the repeater unit back closer to an existing repeater or access point until a "good" or "strong" signal strength is indicated.

[0078] Another option is to provide an audio indication of the transmission signal quality, instead of a visual indication.

[0079] Once the source access point (e.g., video receiver) detects the presence a newly-activated repeater unit, it automatically self-configures the cellular repeater wireless network. This aspect of the present invention will be explained in greater detail below.

[0080] The example network shown in FIG. 13 illustrates the unlimited range at full bandwidth feature of one embodiment of the present invention. In FIG. 13, a video access point 80 is shown running at 36 Mbps to transmit information and video data downstream to a destination television 81 containing a wireless receiver located in a distant room. The video data may originate from a data service connection, such as a Direct Broadcast Satellite (DBS), DSL, or cable television (CATV), provided to access point 80. Repeaters 60a and 60b function as intermediary access points to distribute the video content to client media devices in their local vicinity and to repeat downstream data packets received on the upstream side. As can be seen, each repeater transmits at 36 Mbps so the effective throughput received at destination television 81 remains at 36 Mbps, i.e., without bandwidth loss.

[0081] FIGS. 14A & 14B show a plan view and a side elevation view, respectively, of a floor plan of a building 84 installed with four separate, secure wireless networks according to one embodiment of the present invention. FIG. 14C illustrates the repeater topology for the network installed on the first floor plan shown in FIGS. 14A & 14B. Source access points (e.g., video tuners or data routers) in building 84 are denoted by circles, with the number inside the circle designating the frequency channel used. Additional access points (i.e., repeaters) are denoted by squares, with the number inside the square similarly designating the channel used for signal transmissions. In the example of FIGS. 14A-14C, four source access points 85-88 are each shown connected to a broadband network (e.g., cable, DSL, etc.), with each source access points functioning as a broadband tuner/router. Thus, four separate wireless networks are shown installed on separate floors of building 84.

[0082] With reference to the first floor plan shown in FIGS. 14A-14C, access point 85 transmits video data packets on channel #1 to repeaters 91 and 92, which then both repeat the received data packets on channel #2. Repeaters 93 and 94 (both on channel #3) are shown branching off of repeater 91. Repeater 95 (channel #4) is coupled to the network through repeater 93. Repeater 96 (channel #4) branches off of repeater 94; repeater 97 (channel #1) branches off of repeater 96; and repeater 98 (channel #2) branches off of repeater 97 to complete the first floor topology. Note that repeater 97 is able to reuse channel #1 since it is located a relatively far distance from source access point 85, which uses the same channel. Additionally, the side elevation view of FIG. 14B shows there are no devices on the second floor network above repeater 97 that use channel #1. For the same reasons, repeater 98 is able to reuse channel #2.

[0083] It is appreciated that access point 85 only needs one transceiver to create the repeating wireless network shown in FIGS. 14A-14C. The internal transceiver of access point 85 transmits on channel #1, which transmission is then received by the upstream transceivers of repeaters 91 and 92. Repeater 91 transmits using its downstream transceiver on channel #2, which is then picked up by the two upstream transceivers of repeaters 93 and 94, each of which, in turn, transmits on their downstream transceiver to repeaters 95 and 96, respectively, and so on. Note that in this example, access point 98 only transmits downstream to destination media devices, not to another access point. That is, access

point 98 does not function as a repeater; rather, access point 98 simply communicates with the destination media devices in its local area.

[0084] Practitioners in the communications arts will also understand that nearby access points transmitting on the same channel in the first floor network shown in FIGS. 14A-14C (e.g., repeaters 91 & 92) do not interfere with one another. The reason why is because a given message or data packet is only transmitted down one path of the topology tree at a time. Moreover, according to the embodiment of FIGS. 14A-14C, each access point in the topology tree does not need an arbitrary number of transceivers to repeat data messages across the network; an upstream transceiver and a downstream transceiver suffices. As described previously, an additional 2.4 GHz band transceiver may be included, for example, to provide communications with 802.11b or 802.11g compatible devices. It should be understood, however, that there is no specific limit on the number or type of transceivers incorporated in the access points or repeaters utilized in the wireless network of the present invention.

[0085] Practitioners in the art will also appreciate that the tree structure of the wireless network of the present invention is well-suited to applications in which most of the bandwidth is provided from a single source (e.g., a satellite or cable feed). When the bulk of the bandwidth is from root to branch, the repeaters disposed in the branches the tree topology can share channels. When there is a lot of back-and-forth traffic, on the other hand, the repeaters in the tree structure have to operate on different channels, in case a message travels from one branch to another branch of the tree.

[0086] The self-configuring feature of the present invention is also apparent with reference to FIGS. 14A-14C. According to one embodiment of the present invention, a processor in the source access point executes a program or algorithm that determines an optimal set of frequency channels allocated for use by each access point or repeater. An optimal set of channels is one that does not include overlapping channels and avoids channels used by other interfering devices in the same locality. An optimal channel configuration may also be selected that maximizes channel re-use. Further, once a set of the channels has been chosen for use by the access points, modulated power can be reduced to the minimum needed to achieve maximum bandwidth across each link so as to reduce signal reflections. As discussed below, the wireless network of the present invention may also adapt to changes to the network by reconfiguring the channel assignments, such as when new repeaters are added, existing ones removed, or when the network experiences disturbances caused by other interfering devices (e.g., from a neighboring network).

[0087] Note that in FIGS. 14A-14C, the first floor wireless network has been configured such that the channels used by each of the access points do not interfere with other devices located on other floors of building 84. The side elevation view of FIG. 14B shows that interference sources are present in the upper stories of building 84 above the wireless network created by source access point 85. To avoid interference with the devices using channels #5-#10 on the second through fourth floors, the first floor network has configured itself to use channel #1, #2, #3 and #4.

[0088] The circuitry for controlling the self-configuration process may either be centralized in the source access point

or distributed throughout the access points comprising the wireless network. In either case, the system may proceed through a process of iteration, wherein every possible combination of channels allocated to the access points may be tried in order to find an optimal combination of frequency channels. In one embodiment, the network hops through the frequency channels automatically so that an optimal combination of frequencies may be determined. Within a matter of seconds, the network may complete iterating through all permutations of channels to identify which combination of frequencies produces the best result. One example of a best result is the highest average bandwidth from source to each destination. Another best result may be defined as one which optimizes bandwidth to certain destination devices. For instance, if a particular destination device (e.g., a video receiver) requires higher bandwidth than other destination devices, then allocation of channels may be optimized to provide higher bandwidth in the network path to the particular destination device at the expense of lower bandwidth to other devices.

[0089] The system of the present invention also functions to keep modulated power in the network to a minimum. It may be necessary in some instances, for example when transmitting through many walls to a maximum range, to use a lot of power. In other instances, a repeater is located nearby and there may be few walls to transmit through, so less transmission power is required. When the network initially turns on, the access points may transmit at maximum power to establish a maximum range of communication. However, once communications have been established with all of the repeaters in the network, the power output may be reduced to a level that provides adequate signal transmission characteristics (i.e., a threshold signal strength), but no more. In other words, the network may throttle power output, keeping it only as high as it needs to be to create a strong signal to the next repeater. One benefit of such an operation is that it reduces signal reflections that may interfere with the reception quality. Another benefit is less power consumption.

[0090] Another benefit of the power management feature of the present invention is that by having a given channel prorogate less distance, you create the opportunity to reuse that channel in the network at an earlier point in the topology than if transmissions were at maximum power.

[0091] According to one embodiment, the wireless network of the present invention automatically detects channel conflicts that arise, and adapts the network to the conflict by reconfiguring itself to avoid the conflict. That is, the access points monitor the signal quality of the wireless transmissions on a continual basis. Any disturbance or conflict that causes signal transmissions to fall below an acceptable quality level may trigger an adaptive reconfiguration process.

[0092] By way of example, FIGS. 15A and 15B show plan and side elevation views, respectively, of the wireless network previously shown in FIGS. 14A & 14B, but with a disturbance generated by the activation of a cordless phone (shown by square 101 operating on channel #2) in building 84. As shown, the interference caused by cordless phone 101 is within the range of repeaters 91 and 92, thereby affecting the transmissions of those repeaters. In accordance with one aspect of the present invention, the network automatically detects the channel conflict and reconfigures itself to overcome the interference.

[0093] FIGS. 16A and 16B illustrate the network of FIGS. 15A and 15B after reconfiguration to overcome the channel conflict caused by cordless phone 101. As can be readily seen, building 84 is populated with many existing channels in use. Because of the channel usage in the upper stories, the network cannot simply swap out the channels used by repeaters 91 & 92 with a different one. Instead, in this example, the wireless network of the present invention replaces channel #1 of source access point 85 with channel #5. That permits channel #1 to replace channel #2 in both repeaters 91 & 92. In addition, because the channel #1 usage by repeaters 91 & 92 would be too close to the channel #1 usage by repeater 97 (see FIGS. 15A & 15B), the wireless network also replaces channel #1 of repeater 97 with channel #8. Note that channel #8 can be used for repeater 97 because its only other use in building 84 is on the fourth floor at the opposite end of the structure. Repeater 98 is also shown reconfigured to use channel #1 instead of channel #2.

[0094] The adaptation process discussed above may be performed in a similar manner to the self-configuration process previously described. That is, all of the different possible combinations of channels may be tried until the network identifies an optimal combination that works to overcome the channel conflict without creating any new conflicts. The adaptation process may rely upon an algorithm that does not attempt to change or move channels which have already been established. In the example of FIGS. 16A and 16B, for instance, channel #3, used by repeaters 93 & 94, and channel #4, used by repeaters 95 & 96, are left in place. In other words, regardless of the origin of a channel conflict, the network of the present invention adapts to the disturbance by reconfiguring itself to optimize performance.

[0095] In the unlikely event that a channel conflict is truly unavoidable, i.e., no combination of channels exists that would allow the network to extend from the source to any destination without conflict (as could occur in a situation where there is heavy use of channels by neighboring networks) the wireless network of the present invention can reduce bandwidth and still maintain connectivity. Such a scenario is depicted in FIGS. 17A & 17B and FIGS. 18A & 18B.

[0096] FIGS. 17A & 17B illustrate the conflict previously shown in FIGS. 15A & 15B, wherein a cordless phone 101 is activated, except with an additional channel conflict created by a wireless camera 102 operating on channel #5. Here, due to the additional conflict caused by camera 102, there is no combination of channel allocations that might allow the network to reach from any source to any destination without conflict. In such a situation, the network has adapted by reusing the same channel in consecutive branches of the repeater topology, as shown in FIGS. 18A & 18B. FIGS. 18A & 18B show the reconfigured wireless network with repeaters 91 and 92 using channel #3. Because repeaters 93 and 94 also operate on channel #3 the bandwidth of the network is reduced by 50%. The benefit of the channel switching, however, is still preserved throughout the remainder of the network. Unlike a conventional repeating network that continues to lose bandwidth through each leg or repeating segment of the network, in the special situation exemplified in FIGS. 18A & 18B there is the only place in the network where bandwidth is lost. Moreover, the total

bandwidth loss stays at 50%; that is, bandwidth is not continually reduced by each successive repeating segment of the network.

[0097] In yet another embodiment of the present invention, simultaneous wireless networks may be created to run at the same time. Simultaneous wireless networks may be desirable in certain applications, say, where there are three HDTV sets each operating at 15 Mbps. If the backbone of the primary network operates at 36 Mbps, the available bandwidth is insufficient to accommodate all three screens. The solution provided by the present invention is to install a second video tuner (i.e., a second source access point) and double up the number of repeaters through each branch of the rest of the topology.

[0098] FIG. 19 is a floor plan showing two simultaneous wireless networks operating in a building 84 to increase bandwidth. Such an arrangement is ideally suited to support multiple HDTV video streams. In the example of FIG. 19 access points 110 and 120 each comprise a wireless video tuner or router with a broadband connection. Access point 110 is shown operating on channel #1 and access point 120 is shown operating on channel #5. In this case, separate paths are created to the upper left and lower left sections of the floor plan. The path from access point 110 includes repeaters 111, 112 and 113 on respective channels #2, #3 and #4. Meanwhile, the path from access point 120 is implemented using repeaters 121, 122, 123, 124 and 125 on channels #6, #7, #8, #9 and #10, respectively.

[0099] It should be understood that as long as there are a sufficient number of channels available, bandwidth can be increased arbitrarily in the arrangement of FIG. 19. In other words, three, four, or more simultaneously running wireless networks may be implemented in a home or office environment to arbitrarily increase bandwidth to meet increasing data rate demands. If an adequate number of channels is available (e.g., allowing extension of the network across a sufficient distance for channel reuse), there is no limitation on the bandwidth that can be achieved in accordance with the present invention.

[0100] The security features provided by the wireless network of the present invention are discussed in conjunction with the example of FIG. 20. FIG. 20 shows a wireless network according to one embodiment of the present invention which includes a tuner 130 coupled to receive real-time streaming media from a source, such as DBS or CATV. Tuner 130 transmits the media content provided by the source, possibly through one or more repeaters, to a destination device, which in this example, comprises a wireless receiver 133, connected to a standard definition television 134. The media content provided by the source is, of course, encrypted. Only authorized users or subscribers are permitted access to the media content. Tuner 130 typically receives the media data from the cable or satellite provider in a digitally encrypted form. This encryption is maintained through the wireless network to SDTV 134. Wireless receiver 133 is a trusted device; that is, it is secured during installation by exchange of encryption key information. Consequently, receiver 133 is able to decrypt the media content when it arrives across the network from tuner 130. Thus, data security is preserved across the entire span of the wireless network, potentially over many repeater hops, so that interlopers or unscrupulous hackers are prevented from gaining unauthorized use of the wireless local area network.

[0101] In addition to encrypted data, the wireless network of the present invention may also transmit presentation layer data and information, such as overlay graphics and remote controls for interactive experiences. To put it another way, the network may also carry information both upstream and downstream.

[0102] Practitioners in the art will further appreciate that tuner 130 may also digitize analog video, decode it, and compress the received source data prior to transmission across the wireless network, in addition to receiving compressed digital video. In the case where compressed video is transmitted by tuner 130, receiver 133 decompresses the data as it is received. Alternatively, decompression circuitry may be incorporated into television 134 (or into an add-on box) that performs the same task. Receiver 133, or a wireless-enabled television 134, may identify itself as a device that requires high bandwidth to the upstream wireless repeaters 60 and tuner 130. When the network re-configures itself to avoid an interference source, it may take this requirement into consideration during channel allocation to optimize bandwidth in the network path from tuner 130 to receiver 133 or wireless-enabled television 134.

[0103] In an alternative embodiment, tuner 130 decrypts the real-time media stream as it is received from the satellite or cable service provider, and then re-encrypts that same data using a different encryption scheme that is appropriate for the wireless local area network. Thus, in this alternative embodiment, only devices properly enabled by the network are authorized to play media content received via that network. Note that because the wireless network in this embodiment of the present invention is a single or uni-cast signal, it can only be received by a properly enabled receiver that is authorized with appropriate encryption key information. In other words, the media content transmitted across the network from source to destination is not simply available to anyone who happens to have a receiver.

[0104] Still another possibility is for the cable or satellite company to grant an entitlement to tuner 130 that allows a certain limited number of streams (e.g., three or four) to be transmitted in a particular household or office environment, regardless of the number of media client devices that actually receive the media content. This is simply another way to restrict distribution of the media content.

[0105] In yet another alternate embodiment, tuner 130 receives video data packets from a DBS or digital cable TV source and buffers the packets in its internal RAM (see FIG. 21). The video data packets may then be grouped together into a larger packet. For example, an MPEG-2 transmission may have 188-byte packets, which would result in low efficiency over a 802.11x transport. By grouping these relatively small packets into a larger packets (e.g., twelve 188-byte packets grouped together to form a 2.256-Kbyte packet), better 802.11x efficiency can be achieved. Many conventional 802.11x networks incur a high probability of a transmission error when transmitting such large packets over long distances. The occurrence of such an error, of course, requires re-transmission of the packet, with the same risk of another error happening during the re-transmission. By utilizing repeaters separated by relatively short distances (i.e., within the maximum bandwidth range of the repeaters), the transmission error rate is dramatically reduced (e.g., $<10^{-6}$) as compared to conventional wireless networks.

Thus, because larger packets (e.g., 500 bytes or greater) may be utilized, the wireless network of the present invention is capable of achieving a high effective throughput (e.g., as much as 36 Mbps or greater) at low error rates. By way of example, and not limitation, one embodiment of the present invention is capable of achieving approximately 32 Mbps effective throughput, transmitting 2.256-Kbyte packets across an 802.11x network of arbitrary length with a bit error rate of about 10^{-7} or less.

[0106] Another feature of the present invention is the ability to serendipitously provide connectivity to any user who happens to be within the range of the wireless network. If, for instance, a wireless repeater or access point is mounted near a window or on the rooftop of a building, the outdoor range of the wireless network may be extended to a nearby park or other buildings (e.g., a café or coffeehouse). A user who has a laptop computer configured with an existing wireless transmitter and receiver, and who happens to be within the range of the wireless network, could connect to the Internet; view a video program; listen to an audio program; or store media content on its disk drive for retrieval and play at a later time (assuming proper entitlements). In other words, the present invention provides ever greater mobility by allowing portable computer users to take media content with them.

[0107] Media content may also be downloaded from the wireless network for archival storage on a wireless disk server.

[0108] Those of ordinary skill in the art will further appreciate that the wireless network of the present invention is client device independent. It does not matter to the network what type of device is at the destination end receiving the transmitted media content. Video and graphics content carried on the WLAN of the present invention can play on multiple types of television, computers (e.g., Macintosh® or PC), different MP3 players, PDAs, digital cameras, etc. By way of example, any PC or Mac equipped with a 2.4 GHz band wireless card can detect the presence of the wireless network. Once it has detected the running wireless network, it may download a driver that contains the necessary security and protocol information for accessing the media content. Readily available software, such as RealPlayer®, QuickTime®, or Windows® MediaPlayer, may be used to play content provided through the network.

[0109] With reference now to FIG. 21, a circuit block diagram showing the architecture of a DBS tuner according to one embodiment of the present invention is shown. Similar to the architecture of the repeater unit shown in FIG. 11, a CPU 144, a RAM 145, a Flash ROM 146, and I/O ASIC 147 are coupled to a system bus 150. A 5 GHz band downstream transceiver 156 and a 2.4 GHz band transceiver 157, both of which are connected to antenna 160, are also coupled to system bus 150. (An upstream transceiver is not needed at the source end.)

[0110] Data from the satellite feed is received by a tuner 140 and output to decryption circuitry 141, which may be configured to receive the latest encryption key information from a smart card 142. The decrypted digital stream output from block 141 is then re-encrypted by encryption circuitry 143 prior to being sent over the wireless network. As discussed above, the re-encryption is a type of encryption appropriate for the wireless network, not one that is locked into the satellite encryption scheme.

[0111] The architectural diagram of FIG. 21 is also shown including connector, indicator, and pushbutton blocks 151-153, as previously described in conjunction with FIG. 11. A power supply unit 159 provides a supply voltage to the internal electronic components of the tuner.

[0112] FIG. 22 is a circuit block diagram illustrating the basic architecture of a cable television tuner in accordance with one embodiment of the present invention. Practitioners in the art will appreciate that the architecture of FIG. 22 is somewhat more complicated due to the presence of both analog and digital signal channels. Elements 161-172 are basically the same as the corresponding components of the DBS tuner described above.

[0113] Tuner 175 receives the cable feed and separates the received signal into analog or digital channels, depending on whether the tuner is tuned to an analog or digital cable channel. If it is an analog channel, the video content is first decoded by block 177 and then compressed (e.g., MPEG2 or MPEG4) by circuit block 180 prior to downstream transmission. If it is a digital channel, a QAM demodulator circuit 176 is used to demodulate the received signal prior to decryption by block 178. A point of deployment (POD) module 179, which includes the decryption keys for the commercial cable system, is shown coupled to decryption block 178. After decryption, the streaming media content is re-encrypted by block 181 before transmission downstream on the wireless network.

[0114] FIG. 22 shows a one-way cable system. As is well-known to persons of ordinary skill in the art, a two-way cable system further includes a modulator for communications back up the cable, as, for example, when a user orders a pay-per-view movie.

[0115] FIG. 23 is a circuit block diagram illustrating the basic architecture of a wireless receiver in accordance with one embodiment of the present invention. Like the repeater, DBS tuner, and cable tuner architectures described previously, the wireless receiver shown in FIG. 23 includes a CPU 185, a RAM 186, and a Flash ROM 187 coupled to a system bus 188. A power supply unit 184 provides a supply voltage to each of the circuit elements shown.

[0116] A 5 GHz band upstream transceiver 189 is shown in FIG. 23 coupled to an antenna 190 and to system bus 188. A single transceiver is all that is required since the receiver of FIG. 23 does not transmit downstream and it outputs directly to a display device such as a television. As described earlier, the 5 GHz band offers the advantage of more available channels. I/O ASIC circuitry 192 coupled to bus 188 includes the graphics, audio, decryption, and I/O chips (commercially available from manufacturers such as Broadcom Corporation and ATI Technologies, Inc.) needed to generate the output signals for driving the display device. In addition to elements 193-195 found on the repeater architecture of FIG. 11, I/O ASIC 192 may also provide outputs to a DVI connector 196 (for HDTV), analog audio/video (A/V) outputs 197, an SP/DIF output 198 (an optical signal for surround sound and digital audio), and an infrared receiver port 199 for receiving commands from a remote control unit.

[0117] FIG. 24 is a circuit block diagram of the internal architecture of a repeater 200 according to another embodiment of the present invention. Repeater 200 is similar to

repeater unit **60** shown in **FIG. 11**, except for several design changes. For instance, repeater **200** utilizes a single transceiver for upstream and downstream transmissions rather than two transceivers, as described in the previous embodiments. The single transceiver of repeater **200** is separated into a 5 GHz band transmitter **214** and a 5 GHz band receiver **215**, both of which are coupled to a system bus **205**. An optional 2.4 GHz band transceiver **216**, also shown coupled to a system bus **205**, may be included if the repeater is intended to function as an access point for two-way communications with 2.4 GHz destination devices located in the vicinity of repeater **200**. In the case where repeater **200** operates exclusively as a repeater or a 5 GHz access point, but not as a 2.4 GHz access point, transceiver **216** may be omitted.

[0118] Note that transmitter **214**, receiver **215**, and optional transceiver **216** are each shown connected to physically separate antennas **217a**, **217b**, and **217c**, respectively, to provide better signal isolation. Antennas **217** may be implemented as externally mounted wireless antennas, or internal antennas, each having a separate physical wire connection. Any of the previously described access points, repeaters, tuners, etc., may also be implemented with separate antennas for each different transceiver. Alternatively, transmitter **214**, receiver **215**, and optional transceiver **216** may all be connected to a single antenna as shown in the previous embodiments.

[0119] Transformer/power supply **201** provides supply voltages to the various internal electronic components, which include a CPU **202**, a RAM **203**, a Flash ROM **204**, and input/output application specific integrated circuitry (I/O ASIC) **2066**, each of which is shown coupled to a system bus **205**. These components operate in the same manner as described in the previous embodiments. For example, a 1394 connector interface **210** provides a Firewire® port (coupled through a 1394 PHY physical interface **213**) to I/O ASIC **206**. A pushbutton switch **209** and an LED indicator panel **211** are also coupled to I/O ASIC **206**. Switch **209** and panel **211** function in the identical manner described in conjunction with **FIG. 11**. A Universal Serial Bus (USB) connector **207** is coupled to I/O ASIC **206** to provide an additional connection port, which may be used as an alternative to 1394 connector interface **210**.

[0120] The embodiment of **FIG. 24** further comprises D.C. power connections from supply **201** to connectors **210** and **207** for the purpose of accommodating versions of these connectors that include power supply pins. For example, 1394 connectors are commercially available in 4-pin and 6-pin versions; the 6-pin version being capable of receiving/providing power from/to its mated connector. In the case where repeater **200** is configured with the 6-pin connector version, it may draw power from another repeater or source device (e.g., a digital video recorder), thereby permitting repeater **200** to receive encryption key information to allow repeater **200** to join the wireless network. Receiving power from a connection to another device obviates the need to have to plug repeater **200** into an A.C. supply line. All USB connectors such as **207** are configured with power supply pins and may be utilized in exactly the same way. Again, the previous embodiment of **FIG. 11** may be modified to include this feature.

[0121] It is appreciated that since transmitter **214** and receiver **215** may be located in close physical proximity to one another, cross-channel signal interference may occur. This can be avoided by selecting transmission frequencies that are as far apart as possible. According to one embodiment of the present invention, when transmitter **214** and receiver **215** operate simultaneously it is advantageous to choose frequency channels for each that are not adjacent to one another. For example, since there are twelve channels currently available in the 5 GHz band, the architecture of the present invention attempts to choose send/receive frequency channels for transmitter **214** and receiver **215** that are as far apart as possible (e.g., channels 1 & 12), as opposed to adjacent channels (e.g., channels 1 & 2), to avoid signal interference. Channel selection for transmitter **214** and receiver **215** may be performed by CPU **202**, or alternatively by another CPU (e.g., the CPU of the source access point) in the wireless network.

[0122] The same concept of utilizing a single transceiver with transmitter and receiver sections that can operate independently and simultaneously may also be applied to a wireless receiver coupled to a television or other display device. By way of example, **FIG. 25** is a circuit block diagram of a wireless receiver **220** that includes a 5 GHz band upstream transmitter **229** coupled to an antenna **230a** and to system bus **221**. Since receiver **220** does not transmit downstream (i.e., it outputs directly to a display device such as a television) a 5 GHz band upstream receiver **228** is also included coupled to system bus **221** and antenna **230b**. Alternatively, transmitter **229** and receiver **228** may share a single antenna, as shown in the previous embodiment of **FIG. 23**.

[0123] Receiver **220** also comprises an I/O ASIC **232** coupled to bus **221**. I/O ASIC **232** includes the graphics, audio, decryption, and I/O chips for generating the output signals used to driving the television or display device. The elements **224-227** and **233-239** are the same as the corresponding elements described in conjunction with the architecture of **FIG. 23**. I/O ASIC **192** may also provide outputs to a DVI connector **196** (for HDTV), analog audio/video (A/V) outputs **197**, an SP/DIF output **198** (an optical signal for surround sound and digital audio), and an infrared receiver port **199** for receiving commands from a remote control unit.

[0124] **FIGS. 26A & 26B** illustrate a prior art approach to access point repeating in which messages are transmitted and received across a wireless network on the same frequency channel. **FIGS. 26A & 26B** show, by way of example, a source access point **240**, a repeater **241**, and a destination device **242** transmitting and receiving on frequency channel "A" for both downstream (**FIG. 26A**) and upstream (**FIG. 26B**) transmissions. As discussed earlier, the drawback of this approach is a loss of bandwidth. For instance, with one repeater in the network chain there is a 50% loss of bandwidth, two repeaters results in a 67% bandwidth loss, and so on.

[0125] **FIGS. 27A & 27B** respectively show downstream and upstream transmissions in a wireless network utilizing two repeaters to provide a transmission link between a source access point **245** and a destination device **248** in accordance with one embodiment of the present invention. In the network of **FIGS. 27A & 27B**, each of the repeaters

246 and **247** function as access points for communications with destination devices located in their immediate vicinity as well as repeaters for transmissions across the network, e.g., such as to destination device **248**. Because repeaters **246** and **247** function both as access points and repeaters, their receivers operate on a frequency channel that does not change. For example, repeaters **246** and **247** are respectively shown operating on frequency channels "A" and "B" for both upstream and downstream transmissions. Maintaining a steady reception frequency channel in repeaters **246** and **247** allows nearby devices, such as a laptop computer, to access the network via the repeaters.

[0126] In the example diagrams of **FIGS. 27A & 27B** source access point **245** and destination device **248** both transmit and receive on the same channel, i.e., channel "A" for source **245** and channel "B" for destination **248**. Repeaters **246 & 247**, on the other hand, are capable of changing their transmitting channel frequencies according to one embodiment of the present invention in order to minimize bandwidth loss.

[0127] As can be seen in the upstream transmission example of **FIG. 27A**, source **245** transmits a message to the receiver section of repeater **246** on channel "A", and the transmitter section of repeater **246** then sends that message to the receiver portion of repeater **247** on channel "B". Since destination device **248** is configured to receive transmission on channel "B", repeater **247** must also transmit the message on channel "B", with a resultant 50% loss of bandwidth due to the fact that repeater **247** transmits and receives on the same channel. Note, however, that this bandwidth loss is still an improvement over the 67% bandwidth loss characteristic of the prior art approach described above in a network with two repeaters.

[0128] For the upstream transmission example shown in **FIG. 27B**, repeaters **246** and **247** both change their transmitting frequencies from "B" to "A". As was the case with the downstream transmission, the upstream transmission incurs a 50% bandwidth loss due to the repeating of channel "A" in both the transmitter and receiver sections of repeater **246**.

[0129] **FIGS. 28A & 28B** show the same concept of access point repeating extended to three repeaters in the transmission link or network chain, according to another embodiment of the present invention. As was the case in **FIGS. 27A & 27B**, each of the repeaters **251-253** is capable of changing its transmitting frequency. The receiving frequencies utilized by repeaters **251-253** remain steady. For instance, the receiver portions of repeaters **251-253** are shown configured to operate on channels "A", "B", and "C", respectively, for both the downstream and upstream transmissions of **FIGS. 28A & 28B**. Source access point **250** transmits/receives on channel "A" and destination device **254** transmits/receives on channel "C", regardless of the direction of transmission.

[0130] In accordance with the presently described embodiment of the invention, each of the repeaters **251-253** changes its transmitting frequency when switching the direction of transmission (i.e., from upstream to downstream, or vice-versa). For example, in the upstream transmission of **FIG. 28B**, the transmitter section of repeater **251** changes from "B" to "A"; the transmitter of repeater **252** changes from "C" to "A"; and the transmitter of repeater **253** changes from "C" to "B".

[0131] In this embodiment, the upstream transmission incurs a 50% bandwidth loss due to the repeating of channel "A" in both the transmitter and receiver sections of repeater **251**. Likewise, the downstream transmission incurs a 50% bandwidth loss due to the repeating of channel "C" in repeater **253**. Even though each transmission incurs a 50% bandwidth loss, this is significantly less than the 75% bandwidth loss suffered by the prior art approach described above with three repeaters. In other words, whereas the prior art approach of **FIGS. 26A & 26B** incurs increased bandwidth loss with additional repeaters, the single transceiver with changing transmitter frequencies approach described in conjunction with **FIGS. 27 & 28** only results in a 50% bandwidth loss regardless of the number of repeaters utilized in the wireless network.

[0132] An exemplary transaction across a wireless network utilizing non-access point repeaters that provide a transmission link between a source and a destination device in accordance with yet another embodiment of the present invention is shown in **FIGS. 29A-29F**. The transaction illustrated comprises a request-to-send (RTS) message sent from the source to the destination, followed by a clear-to-send (CTS) message sent in response from the destination back to the source. Once the CTS message is received, the source transmits data in packet form across the network. After receipt of the data packets, the destination issues an acknowledgement (ACK) message for transmission across the network to the source access point. This same basic transaction can operate in reverse; that is, the destination can initiate a transaction by sending an RTS prior to sending data upstream. In this latter case, the source sends CTS and ACK messages in response at the appropriate times.

[0133] **FIG. 29A** shows a wireless network according to one embodiment of the present invention in an idle state awaiting a potential RTS issued from either source access point **256** or destination device **259**. In the idle state, repeaters **257** and **258** have their receivers set to the same frequencies that source **256** and destination **259** are expected to transmit on. In this case, since source **256** is set to transmit (and receive) on channel "A", the receiver of repeater **257** is also set to operate on channel "A". Similarly, because destination device is set to transmit (and receive) on channel "C", the receiver of repeater **258** is set to operate on channel "C". To keep their associated transmission links active when the wireless network is idle, repeaters **257** and **258** may periodically send simple "ping" messages to each other (or to other neighboring repeaters in a larger network) on the appropriate channel. In this example, since the receiver sections of repeaters **257** and **258** are set to channels "A" and "C", respectively, the transmitter sections of repeaters **257** and **258** are respectively set to channels "C" and "A" in the idle state.

[0134] It should be understood that in the particular embodiment of **FIGS. 29A-29F**, repeaters **257** and **258** are non-access point repeaters. That is, repeaters **257** and **258** are intended to function solely as repeaters in the wireless network, analogous to links in a communication chain extending from the source to the destination. To put it another way, repeaters **257** and **258** only serve the purpose of carrying transmissions from source **256** to destination **259**, and vice-versa. Because repeaters **257** and **258** do not serve as access points to intermediately located destination devices, their receivers are not restricted to fixed frequency

channels. In other words, according to the embodiment of FIGS. 29A-29F both the receiver and the transmitter sections of repeaters 257 & 258 may change frequency channels to maximize bandwidth of data transmissions, as described in more detail below.

[0135] FIG. 29B illustrates the transmission of a RTS message sent from source 256 to destination 259. The RTS message is transmitted by source 256 on channel "A" and received by repeater 257 on the same frequency channel. Repeater 257 then transmits the RTS message to repeater 258 on channel "C". Since destination 259 is configured to receive on channel "C", the transmitter section of repeater 258 changes from "A" to "C" in order to complete the transmission of the RTS message across the wireless network. Note that a 50% bandwidth loss occurs during the RTS transmission due to channel "C" being utilized by both the receiver and transmitter sections of repeater 258. Practitioners familiar with network communications, however, will understand that because a RTS transmission is a very brief transmission, this loss of bandwidth has virtually no affect on the overall bandwidth of the system.

[0136] The next stage in the transaction occurs when destination device 259 sends a CTS transmission back to source 256, as shown in FIG. 29C. In this case, the transmitter sections of repeaters 257 and 258 both change from frequency channel "C" to channel "A". As was the case with the RTS message, the CTS transmission incurs a 50% loss of bandwidth due to the repeated use of frequency channel "A" by repeater 257. However, because the CTS transmission is very brief the overall bandwidth of the system is virtually unaffected.

[0137] Once the CTS message is received by source 256, source 256 sends the data (e.g., high bandwidth video data) to destination device 259 across the wireless network. Data transmission from source 256 to destination 259 is shown occurring in FIG. 29D. During data transmission, both the transmitter and receiver sections of repeaters 257 and 258 are operable to change frequencies so that there is no effective bandwidth loss in the data transmission between source 256 and destination device 259. In the example of FIG. 29D, the transmitter of repeater 258 changes from frequency channel "A" to frequency channel "C" so that destination device 259 can receive the data being sent. To prevent loss of bandwidth, the receiver section of repeater 258 changes frequency from channel "C" to "B". The transmitter section of repeater 257, in turn, changes from frequency channel "A" to "B". Thus, by utilizing non-access point repeaters with transmitter and receiver sections configured to change frequency and operate simultaneously, the embodiment of FIG. 29 achieves data transmission (upstream or downstream) with no bandwidth loss.

[0138] After the last data packet is received, destination device 259 sends an acknowledgement (ACK) message back to source 256 on channel "C", as shown in FIG. 29E. Here again, the transmitter and receiver section of repeater 258 change frequency channels to accommodate transmission of the ACK message. As shown in the example of FIG. 29E, the receiver section of repeater 258 changes to channel "C" and the transmitter section changes to channel "A". Only the transmitter section of repeater 257 is shown changing frequency channels (from "B" to "A") so that the repeated ACK message can be received by source 256. As was the case with

the RTS and CTS messages, the loss of bandwidth from repeater 257 transmitting and receiving on the same channel is insignificant since the ACK message is very brief.

[0139] Practitioners will appreciate that it is also possible to configure the receivers of each of the repeaters to also change frequency during the RTS, CTS, and ACK message transmissions in order to eliminate bandwidth loss. But again, because each of these transmissions is very brief in duration, the advantage of such implementations is minimal.

[0140] FIG. 29F shows the wireless network returning to the idle state once the ACK message is received by source 256. To maintain its link with repeater 258 during the idle period, the transmitter of repeater 257 is shown changing its operating frequency from channel "A" to channel "C".

[0141] Another way to achieve high bandwidth operation in a wireless network is shown in the embodiment of FIGS. 30A-30F, which illustrates a transaction from a source access point 261 to a destination device 264 which includes the transmission of high bandwidth data packets, e.g., comprising high bandwidth video signals. Destination device 264 may comprise a wireless receiver unit, such as that shown in FIG. 25, which receives video data and outputs a video display image to a television. In the embodiment of FIGS. 30A-30F, destination device 264 comprises a wireless receiver unit that includes separate transmitter and receiver sections that operate on different frequency channels.

[0142] In the example of FIGS. 30A-30F, repeaters 262 and 263 function both as repeaters and access points. Thus, repeaters 262 and 263 are shown with their receivers set to a fixed frequency channel. In each of FIGS. 30A-30F, for example, the receiver of repeater 262 is set to operate on channel "A" and the receiver of repeater 263 is set to operate on channel "B". Nonetheless, because destination device 264 transmits and receives on different channels the embodiment of FIGS. 30A-30F achieves downstream data transmission without bandwidth loss.

[0143] FIG. 30A illustrates the wireless network in an idle state much the same as that shown in FIG. 29A. Source access point 261 is configured to transmit and receive on frequency channel "A"; therefore, repeater 262 is set to receive a potential RTS transmission from source 261 on channel "A". Similarly, because destination device 264 transmits on channel "B", repeater 263 is set to receive a potential RTS transmission from destination 264 on channel "B". Repeaters 262 and 263 transmit on channels "B" and "A", respectively, to maintain active transmission links in the network.

[0144] FIG. 30B shows an exemplary RTS message sent downstream from source 261 to destination 264. In this example, the transmitter of repeater 263 changes frequency from channel "A" to channel "C" in order to propagate the RTS message through the network chain to reach destination device 264. In response, destination device 264 sends back a CTS message to source 261, as shown in FIG. 30C. To propagate the CTS message, the transmitters of repeaters 262 and 263 both change frequency to channel "A". Note that the repeated use of channel "A" by repeater 262 results in a 50% bandwidth loss for this very brief transmission.

[0145] Downstream data transmission is shown in FIG. 30D with no bandwidth loss. In this case, both repeaters change their transmit frequencies (repeater 262 changes to

channel "B" and repeater 263 changes to channel "C") but maintain their receive frequencies steady so they can function as access points as well as repeaters. This is made possible by destination device 264 having the capability of transmitting and receiving on different frequency channels and each of the repeaters having their receivers set to different channels, with only their transmitters changing frequency.

[0146] FIG. 30E shows an ACK transmission from destination device 264 to source 261, with repeaters 262 and 263 changing their transmit frequencies to the same channels (both channel "A") previously used to send the CTS message back across the network (see FIG. 30C). FIG. 30F illustrates the network returning to an idle state following completion of the video data transaction. To return to the idle state following an ACK transmission, the transmitter of repeater 262 changes frequency from channel "A" to channel "B".

[0147] Practitioners in the arts will understand that, unlike repeaters 262 and 263, the two different frequency channels of destination device 264 are not utilized simultaneously. In other words, destination device 264 transmits and receives at separate times. This allows for greater cost reduction. It is further appreciated that destination device 264 could utilize a conventional transceiver capable of shifting its frequency (e.g., run on frequency channel "B" during the transmission part of the transaction, and on frequency channel "C" during the reception part of the transaction).

[0148] It is also possible to achieve upstream transmissions according to the present invention without bandwidth loss by modifying the embodiment of FIG. 30 to include a source access point that transmits and receives on different frequency channels. In still another embodiment, as long as repeating occurs at different frequencies in the network chain all transmission can occur in the analog domain. In such an implementation, the carrier frequency of the analog transmission is simply shifted by each repeater utilizing any one of a number of well-known frequency shifting techniques. This approach obviates the need for digital signal conversions thereby providing certain cost benefits.

[0149] FIG. 31 is a circuit block diagram of the internal architecture of repeater unit 270 according to still another embodiment of the present invention. In many respects, repeater 270 is similar to repeater of FIG. 24. For example, repeater 270 includes a transformer/power supply 271 to provide supply voltages to the various internal electronic components, which include a CPU 272, a RAM 273, a Flash ROM 274, and I/O ASIC 276, each of which is shown coupled to a system bus 275. USB and 1394 connectors 277 and 280 are configured with supply pins coupled to power supply 271 as previously described. Repeater 270 also includes LED indicator panel 281 and pushbutton switch 279 to assist in the installation and connection of repeater 270 to the wireless network.

[0150] The embodiment of FIG. 31 differs from the earlier embodiments in that it utilizes a single transceiver 285 that is capable of operating in accordance with IEEE 802.11a, 802.11b, and the 802.11g standards in both the 2.4 GHz and 5 GHz bands. For example, in one implementation, transceiver 285 may comprise the AR5001X transceiver chipset manufactured by Atheros, Inc., of Sunnyvale, Calif. In other embodiments, transceiver 285 may comprise a single 2.4

GHz or 5 GHz band transceiver. An additional transceiver 2.4/5 GHz transceiver 286 may optionally be included in order to configure repeater unit 270 to function as an access point as well as a repeater. When repeater unit 270 is configured as an access point, transceiver 286 may operate to receive requests from nearby client devices, as well as transmit data to those devices.

[0151] As can be seen, transceiver 285 and optional transceiver 286 are both coupled to system bus 275. Both transceivers are also shown coupled to an antenna 287. Alternatively, transceivers 285 and 286 may each be coupled to separate antennas.

[0152] FIG. 32A is a diagram illustrating the two-dimensional propagation characteristics through open air associated with a repeater or access point 290 operating in the 2.4 GHz band and transmitting on channel 1. Inner dashed circle 291 represents the in-band interference range, which is the range where the access point or repeater interferes with other wireless devices operating in the same frequency band, but not necessarily on the same frequency channel. That is, if another wireless device is located within the in-band interference range of circle 291, then transmissions by access point 290 (e.g., on channel 1) will interfere with the other wireless device's ability to receive data on any channel within the transmission frequency band. Although the in-band interference range varies depending on such factors as transmit power, level of isolation between channels, etc., a typical range of circle 291 is about 2-3 feet.

[0153] The maximum bandwidth range is shown in FIG. 32A by solid circle 292. Outside of this range the signal begins to lose bandwidth due to various impediments to signal transmission. By way of example, 2.4 GHz transceivers operating in accordance with the 802.11g standard have a maximum bandwidth range of approximately 50 feet. Outer dashed circle 293 represents the range at which the signal from access point 290 ceases to interfere with other signals in the same channel. These signal characteristics were discussed earlier in conjunction with FIGS. 2A & 2B. FIG. 32B shows an access point 295 operating in the 5 GHz band with in-band interference, maximum bandwidth, and in-channel interference ranges represented by circles 296-298, respectively. Practitioners in the art will understand that transmissions in the 5 GHz band have somewhat shorter in-band and in-channel interference ranges.

[0154] FIG. 33A is an example of signal repeating for a wireless network utilizing the repeater architecture shown in FIG. 31. FIG. 33B is a chart illustrating pipelined data packet flow from source to destination for the example of FIG. 33A. Transmission of individual data packets across the network is indicated by a staircase line extending from the upper left of the diagram toward the lower right. As can be seen, source access point 300a transmits (Tx) a first data packet (DP₁) on frequency channel 1 during cycle time t₀, which packet is then received (Rx) on channel 1 by repeater 300b during the same cycle. Repeater 300b transmits DP₁ on frequency channel 6. Repeater 300c, in turn, receives DP₁ on channel 6 and re-transmits that data packet on channel 11 during transmission cycle t₁.

[0155] In accordance with the pipelined data transmission of the present invention, source 300a transmits DP₂ in cycle t₂ on channel 1. At the same time, repeater 300c transmits DP₁ on channel 11, which is then received by destination

device **305** in the same cycle. This is made possible by the fact that each repeater is located beyond the in-band interference range, yet within the range of maximum bandwidth, of nearby, i.e., adjacently-located, repeaters (as well as the source and destination devices) in the transmission chain. For instance repeater **300b** is located outside the in-band interference range of source **300a**; repeater **300c** is located outside the in-band interference range of repeater **300b**; and destination device **305** is placed outside of the in-band interference range of repeater **300c**.

[0156] Note that in the example of **FIGS. 33A and 33B** source device transmits another data packet every other packet cycle, for a 50% bandwidth loss. This bandwidth loss, however, remains the same regardless of the number of repeaters utilized in the wireless network. The reason why is because the network is configured such that two repeaters (or the source device and a repeater) that transmit simultaneously are physically located outside of each other's in-band interference range. By way of example, in **FIG. 1** source **300a** and repeater **300c** are located far enough away from one another that they do not interfere.

[0157] A variation of the example of **FIGS. 33A & 33B** is provided in **FIGS. 34A & 34B**, which shows repeater **310b** (the first repeater in the chain) reusing the same channel (e.g., channel 1) for both receiving and transmitting; that is, repeater **310b** receives DP_1 on channel 1 in cycle t_0 and transmits DP_1 on channel 1 in cycle t_1 . The reason why repeater **310b** is permitted to transmit/receive on the same channel is because source device **310a** does not transmit during cycle t_1 . In this example, repeater **310c** receives DP_1 on channel 1 in cycle t_1 and transmits DP_1 on channel 11 to destination device **315** in cycle t_2 . If there were any additional repeaters in the transmission chain, they would also receive/transmit on different channels. The implementation shown in **FIGS. 34A & 34B** has a maximum bandwidth loss of 50% regardless of the number of repeaters utilized, but advantageously reduces channel usage and switching overhead.

[0158] The embodiment of **FIGS. 35A & 35B** utilizes the dual frequency band capabilities of the single transceiver repeater architecture shown in **FIG. 31**. In the configuration shown, source device **320a** and destination device **325** both operate exclusively in the 2.4 GHz frequency band, e.g., of the 802.11b and 802.11g protocols. Source **320a**, for example, transmits DP_1 in the 2.4 GHz band on channel 1 in cycle t_0 , which is received on the same channel and in the same cycle by repeater **320b**. Repeater **320b**, however, changes frequency bands as well as changing channels to transmit DP_1 . That is to say, repeater **320b** switches to the 5 GHz frequency band (802.11a) to re-transmit DP_1 on channel 5 in cycle t_1 , which, in turn, is received by repeater **320c** on channel 5 in cycle t_1 . In cycle t_3 repeater **320c** changes back to the 2.4 GHz band to transmit DP_1 on channel 11 to destination device **325**.

[0159] In the embodiment of **FIGS. 35A & 35B** the 5 GHz band is utilized for repeater-to-repeater signal transmission, with data transmission between source & repeater devices and repeater & destination devices taking place in the 2.4 GHz band. One advantage of utilizing the 5 GHz band for repeating is that it is basically possible to implement a wireless network with as many repeaters as needed due to the much greater number of channels available in the 5 GHz

band. Additionally, the maximum bandwidth loss for the wireless network of **FIGS. 35A & 35B** is still limited to 50% regardless of the number of repeaters utilized in the transmission chain.

[0160] **FIGS. 36A & 36B** illustrate a wireless network utilizing repeaters according to the architecture of **FIG. 31**, each having a single transceiver that operates in the 5 GHz band in a so-called "turbo" mode in which transmissions take place on two different channels simultaneously. Transceivers that operate in the 5 GHz frequency band in turbo mode are commercially-available from Atheros, Inc., of Sunnyvale, Calif. As will become apparent from the discussion below, bandwidth loss in this embodiment is limited to 33% no matter how many repeaters are utilized.

[0161] **FIG. 36A** shows a wireless network comprising a source device **330a**, repeaters **330b-330d**, and destination device **335**. (Note that only the in-band interference and maximum bandwidth ranges **331** and **332**, respectively, are only shown. The in-channel interference range is omitted to simplify the figure.) **FIG. 36B** shows source **330a** transmitting data packet DP_1 on channel 1 in cycle t_0 . Repeater **330b** receives DP_1 on channel 1 in the 2.4 GHz band in cycle t_0 . In cycle t_1 , repeater **330b** transmits DP_1 to repeater **330c** in 5 GHz turbo mode utilizing channels 5 & 6 (only the lowest channel number is shown in **FIGS. 36A & 36B** for clarity). Due to the fact that DP_1 is simultaneously transmitted on two different channels, the duration of cycle t_1 is only half as long as cycle t_0 . Repeater **330c**, which is also configured to transmit in turbo mode in this embodiment, receives DP_1 on channels 5 & 6 in the 5 GHz band in cycle t_1 and re-transmits that same data packet on channels 7 & 8 in cycle t_2 .

[0162] Finally, repeater **330d** receives DP_1 on channels 7 & 8 in cycle t_2 and then sends DP_1 to destination device **325** in the 2.4 GHz band on channel 11 in cycle t_3 . The transmission of data packets DP_2 , DP_3 , and so on, continues in the same pipelined manner described above. That is, source **330a** transmits the second data packet during cycle t_2 and the first half of cycle t_3 as shown in **FIG. 36B**. That packet is received by repeater **330b** and re-transmitted on channels 5 & 6 in turbo mode in the second half of cycle t_2 , and so on.

[0163] Practitioners in the art will appreciate that because repeaters **330b** and **330c** are running at twice the normal data rate, they only need half the time normally needed to transmit in the 2.4 GHz band. This time savings limits the bandwidth loss in the embodiment of **FIGS. 36A & 36B** to 33% regardless of the number of repeaters used in the transmission chain from source to destination. Again, because each of the communications devices in **FIGS. 36A & 36B** are located beyond each device's in-band range **331**, no interference occurs during transmissions. It should also be understood that any of the repeaters **330b-330d** could also be configured to function as an access point through the inclusion of optional transceiver **286**, although some sort of isolation circuitry may be needed in such a design since the two transceivers **285** and **286** might operate simultaneously within the in-band interference range.

[0164] **FIGS. 37A & 37B** show another embodiment of a wireless network according to the present invention in which every other repeater in the transmission chain from source device **340a** to destination device **345** re-uses the same frequency channel. In other words, the same channel is

reused every second repeater. In this channel doubling configuration repeaters **340b**, **340d**, and **340f** all transmit and receive data packets on the same frequency channel. Alternate intervening repeaters **340c** and **340e** receive and transmit on different channels; that is, repeaters **340c** and **340e** switch channels (from Rx to Tx) during repeating.

[0165] As before, each repeater **340b-340f** is located outside of the in-band interference range **341** of other neighboring repeaters, as well as that of the source device **340a**. Destination device **345** is also located beyond the in-band interference range **341** of repeater **340f**. At the same time, each repeater (and the source and destination devices) is located within its neighboring device's maximum bandwidth range **342**. By way of example, repeater **340b** is located within the maximum bandwidth ranges **342a** & **342c**, and outside of the in-band interference ranges **341a** & **341c**, of source device **340a** and repeater **340c**, respectively.

[0166] At any given moment, only one device in the wireless network of **FIG. 37B** transmits on the same channel. Thus, the embodiment of **FIGS. 37A & 37B** not only uses channels very efficiently, it also makes it possible to extend the wireless network of the present invention over a greater distance. In other words, given the limited number of available channels in a frequency band (e.g., the 2.4 GHz band only has three available channels) the wireless network of **FIGS. 37A & 37B** can extend a farther distance than the previous embodiments that do not employ channel doubling from source to destination. Additionally, in the wireless network of **FIG. 37B** the bandwidth loss is limited to 50% regardless of the number of repeaters utilized in the transmission chain. In the event that there is a delay for transceivers to switch channels, the channel doubling embodiment of **FIG. 37B** also reduces channel-switching latency by 50% as compared to channel switching on every repeater.

[0167] It should be understood that elements of the present invention may also be provided as a computer program product which may include a machine-readable medium having stored thereon instructions which may be used to program a computer (or other electronic device) to perform a process. The machine-readable medium may include, but is not limited to, floppy diskettes, optical disks, CD-ROMs, and magneto-optical disks, ROMs, RAMs, EPROMs, EEPROMs, magnet or optical cards, propagation media or other type of media/machine-readable medium suitable for storing electronic instructions. For example, elements of the present invention may be downloaded as a computer program product, wherein the program may be transferred from a remote computer (e.g., a server) to a requesting computer (e.g., a client) by way of data signals embodied in a carrier wave or other propagation medium via a communication link (e.g., a modern or network connection).

[0168] Additionally, although the present invention has been described in conjunction with specific embodiments, numerous modifications and alterations are well within the scope of the present invention. Accordingly, the specification and drawings are to be regarded in an illustrative rather than a restrictive sense.

I claim:

1. A repeater for a wireless network comprising:
 - a transceiver operable to receive data in a 2.4 GHz band or a 5 GHz band, and transmit data in either the 2.4

GHz band or the 5 GHz band, the transceiver also being operable to switch channel frequency in the 2.4 GHz or the 5 GHz bands;

- a processor unit coupled to control the transceiver;
 - a RAM memory device to store data received by the transceiver.
2. The repeater of claim 1 further comprising an input/output (I/O) unit to receive encryption key information that authenticates the repeater for use in the wireless network.
 3. The repeater of claim 2 further comprising a ROM to store the encryption key information.
 4. The repeater of claim 1 further comprising a second transceiver operable to receive data in a 2.4 GHz band or a 5 GHz band, and transmit data in either the 2.4 GHz band or the 5 GHz band, the second transceiver being controlled by the processor unit.
 5. The repeater of claim 1 further comprising an antenna coupled to the transceiver.
 6. The repeater of claim 1 further comprising a connector coupled to the I/O unit, the connector to receive a wire plug coupled to another device that delivers the encryption key information to the repeater.
 7. The repeater of claim 6 wherein the connector comprises a 1394 connector.
 8. The repeater of claim 1 further comprising an indicator panel that provides a visual indication of transmission signal strength, the indicator panel being coupled to the I/O unit.
 9. The repeater of claim 1 further comprising an external switch for initializing the repeater.
 10. A wireless network comprising:
 - a source device that transmits data on a first channel;
 - a destination device that receives data on a second channel; and
 - a plurality of repeaters to provide a pipelined data transmission link between the source device and the destination device, each of the repeaters having a transceiver with a transmitter and a receiver operable to transmit and receive data on different channels, each of the repeaters being located beyond an in-band interference range, yet within a maximum bandwidth range, of adjacent repeaters in the transmission link.
 11. The wireless network of claim 10 wherein a first repeater in the transmission link is located beyond the in-band interference range, yet within the maximum bandwidth range, of the source device.
 12. The wireless network of claim 11 wherein the first repeater in the transmission link transmits and receives data on a same channel.
 13. The wireless network of claim 10 wherein the source and destination devices operate in a 2.4 GHz frequency band.
 14. The wireless network of claim 10 wherein the plurality of repeaters transmit and receive in a 2.4 GHz frequency band.
 15. The wireless network of claim 13 wherein a first repeater in the transmission link receives data from the source device in the 2.4 GHz frequency band and transmits in the 5 GHz frequency band, and a last repeater in the transmission link receives data in the 5 GHz frequency band and transmits to the destination device in a 2.4 GHz frequency band.
 16. A wireless network comprising:
 - a source device that transmits data packets on a first channel;

a destination device that receives data packets on a second channel; and

a plurality of repeaters to provide a pipelined data transmission link between the source device and the destination device, each of the wireless repeaters having a transceiver with a transmitter and a receiver operable to transmit and receive data on different channels, the plurality of repeaters including a first repeater to receive a first data packet from the source device on the first channel and transmit the first data packet to a second repeater on a different channel, and a last repeater to receive the first data packet from a penultimate repeater and transmit the first data packet to the destination device on the second channel, and wherein each of the repeaters is located beyond an in-band interference range, yet within a maximum bandwidth range, of adjacent repeaters in the transmission link.

17. The wireless network of claim 16 wherein the first repeater is located beyond the in-band interference range, yet within the maximum bandwidth range, of the source device.

18. The wireless network of claim 17 wherein the destination device is located beyond the in-band interference range, yet within the maximum bandwidth range, of the last repeater.

19. The wireless network of claim 16 wherein the source and destination devices operate in a 2.4 GHz frequency band.

20. The wireless network of claim 16 wherein each of the plurality of repeaters transmits and receives in a 2.4 GHz frequency band.

21. The wireless network of claim 16 wherein the first repeater in the transmission link receives data from the source device in a 2.4 GHz frequency band and transmits in a 5 GHz frequency band, and the last repeater in the transmission link receives data in the 5 GHz frequency band and transmits to the destination device in the 2.4 GHz frequency band.

22. A wireless network comprising:

a source device;

a destination device; and

a plurality of repeaters to provide a pipelined data transmission link between the source device and the destination device, even numbered repeaters in the pipelined data transmission link having a transceiver that receives on one frequency channel and switches to another frequency channel to transmit, odd numbered repeaters in the pipelined data transmission link having a transceiver that receives and transmits on a single frequency channel, each of the repeaters being located beyond an in-band interference range, yet within a maximum bandwidth range, of adjacent repeaters in the pipelined data transmission link.

23. The wireless network of claim 22 wherein a first repeater in the pipelined data transmission link is located beyond the in-band interference range, yet within the maximum bandwidth range, of the source device.

24. The wireless network of claim 23 wherein the source device transmits data packets on a first channel and the first repeater receives and re-transmits the data packets on the first channel.

25. The wireless network of claim 24 wherein the destination device is located beyond the in-band interference range, yet within the maximum bandwidth range, of a last repeater in the pipelined data transmission link.

26. The wireless network of claim 25 wherein the destination device receives the data packets on a second channel and the last repeater receives and re-transmits the data packets on the second channel.

27. The wireless network of claim 22 wherein the source and destination devices operate in a 2.4 GHz frequency band.

28. The wireless network of claim 27 wherein each of the plurality of repeaters transmits and receives in a 2.4 GHz frequency band.

29. The wireless network of claim 27 wherein a first repeater in the pipelined data transmission link receives data packets from the source device in the 2.4 GHz frequency band and re-transmits the data packets in a 5 GHz frequency band, and a last repeater in the pipelined data transmission link receives the data packets in the 5 GHz frequency band and re-transmits the data packets to the destination device in the 2.4 GHz frequency band.

30. A wireless network comprising:

a source device;

a destination device; and

a plurality of repeaters to provide a pipelined data transmission link between the source device and the destination device, each of the repeaters having a transceiver operable to receive data packets on one channel and re-transmit the data packets on two different channels simultaneously to a next repeater in the pipelined data transmission link, each of the repeaters being located beyond an in-band interference range, yet within a maximum bandwidth range, of adjacent repeaters in the pipelined data transmission link.

31. The wireless network of claim 30 wherein the source device transmits the data packets on a first channel and the destination device receives the data packets on a second channel.

32. The wireless network of claim 31 wherein a first repeater in the pipelined data transmission link receives the data packets on the first channel.

33. The wireless network of claim 32 wherein a last repeater in the pipelined data transmission link transmits the data packets to the destination device on the second channel.

34. The wireless network of claim 31 wherein the source and destination devices operate in a 2.4 GHz frequency band.

35. The wireless network of claim 30 wherein each of the plurality of repeaters switches channels from receiving to transmitting.

36. The wireless network of claim 34 wherein a first repeater receives the data packets from the source device on the first channel in the 2.4 GHz band and re-transmits the data packets on the two different channels in a 5 GHz band.

37. The wireless network of claim 36 wherein each of the repeaters, except the first repeater and a last repeater in the pipelined data transmission link receives and transmits the data packets in the 5 GHz band.

38. The wireless network of claim 37 wherein the last repeater in the pipelined data transmission link receives the data packets in the 5 GHz band and re-transmits the data packets to the destination device in the 2.4 GHz band.

* * * * *