

Time to Trial

Courts Judges

California Central District

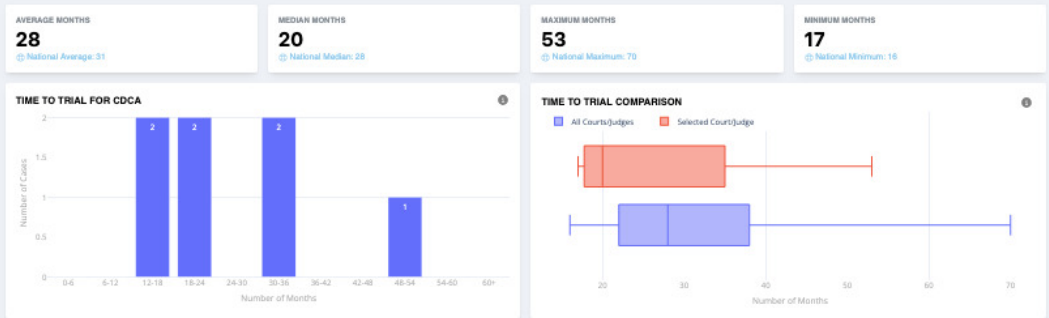
Trial Date: Jan 01, 2020 - Dec 18, 2025

Dates to Exclude: Start date - End date

- Exclude cases with Transfers
- Exclude cases with Stays
- Exclude Outliers
- Exclude cases with Consolidations

Case Size: Small Medium Large

Trial Type: Bench Trials Jury Trials



Data on this page is based on the time from the filing date of a case (or the earliest case in a group of transferred/consolidated cases) to the time of the earliest document indicating that a trial occurred such as a Verdict (indicating a jury trial) or Findings of Fact and Conclusions of Law (indicating a bench trial).