

(12) **United States Patent**
Lee et al.

(10) **Patent No.:** **US 9,824,035 B2**
(45) **Date of Patent:** ***Nov. 21, 2017**

(54) **MEMORY MODULE WITH
TIMING-CONTROLLED DATA PATHS IN
DISTRIBUTED DATA BUFFERS**

3/0659 (2013.01); *G06F 3/0683* (2013.01);
G06F 13/1642 (2013.01); *G11C 8/18*
(2013.01)

(71) Applicant: **Netlist, Inc.**, Irvine, CA (US)

(58) **Field of Classification Search**

None

See application file for complete search history.

(72) Inventors: **Hyun Lee**, Ladera Ranch, CA (US);
Jayesh R. Bhakta, Cerritos, CA (US)

(56) **References Cited**

U.S. PATENT DOCUMENTS

(73) Assignee: **NETLIST, INC.**, Irvine, CA (US)

(*) Notice: Subject to any disclaimer, the term of this patent is extended or adjusted under 35 U.S.C. 154(b) by 0 days.

7,884,619 B1 * 2/2011 Chong G01R 31/3016
324/601
8,214,616 B2 * 7/2012 Ware G06F 13/1684
711/104

This patent is subject to a terminal disclaimer.

(Continued)

(21) Appl. No.: **15/426,064**

Primary Examiner — Michael Sun

(74) *Attorney, Agent, or Firm* — Maschoff Brennan

(22) Filed: **Feb. 7, 2017**

(57) **ABSTRACT**

(65) **Prior Publication Data**

US 2017/0147514 A1 May 25, 2017

A memory module is operable in a memory system with a memory controller. The memory module comprises a module control device mounted on the module board to receive command signals from the memory controller and to output module command signals and module control signals, and memory devices mounted on the module board to perform a first memory operation in response to the module command signals. The memory module further comprises a plurality of buffer circuits distributed across a surface of the module board. Each respective buffer circuit is associated with a respective set of the memory devices and includes logic that is configured to obtain timing information based on signals received by the each respective buffer circuit during a second memory operation prior to the first memory operation and to control timing of the data and strobe signals through the each respective buffer circuit in accordance with the timing information.

Related U.S. Application Data

(63) Continuation of application No. 14/846,993, filed on Sep. 7, 2015, now Pat. No. 9,563,587, which is a (Continued)

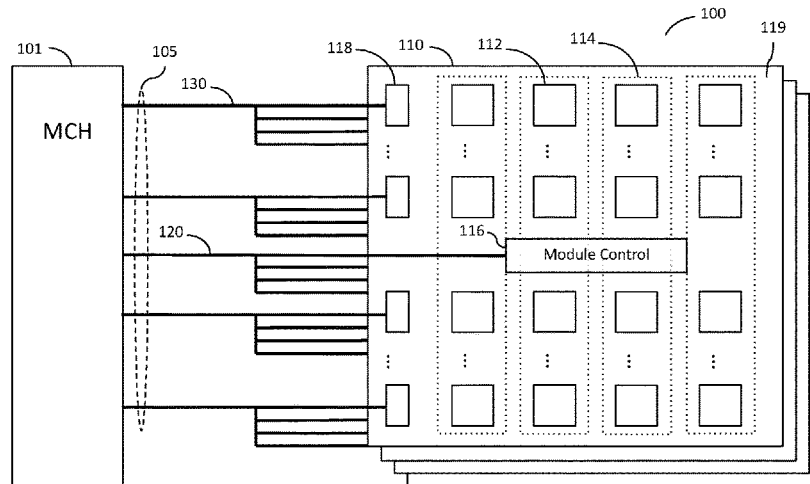
(51) **Int. Cl.**

G06F 3/00 (2006.01)
G06F 12/00 (2006.01)
G06F 13/00 (2006.01)
G06F 13/16 (2006.01)
G06F 3/06 (2006.01)
G11C 8/18 (2006.01)

(52) **U.S. Cl.**

CPC *G06F 13/1673* (2013.01); *G06F 3/0613* (2013.01); *G06F 3/0656* (2013.01); *G06F*

22 Claims, 26 Drawing Sheets



Related U.S. Application Data

continuation of application No. 13/952,599, filed on Jul. 27, 2013, now Pat. No. 9,128,632.

- (60) Provisional application No. 61/676,883, filed on Jul. 27, 2012.

(56) **References Cited**

U.S. PATENT DOCUMENTS

8,565,033 B1 * 10/2013 Manohararajah G11C 29/028
365/129
8,949,519 B2 * 2/2015 Rajan G11O 5/02
365/189.2
2002/0039323 A1 * 4/2002 Tokutome G11C 7/1066
365/233.12
2006/0077731 A1 * 4/2006 Ware G11C 5/04
365/194
2007/0217559 A1 * 9/2007 Stott G11C 7/1051
375/355
2008/0037412 A1 * 2/2008 Geile G06F 17/14
370/208
2010/0271092 A1 * 10/2010 Zerbe G06F 13/4243
327/161
2012/0256639 A1 * 10/2012 Pausini G01R 31/31709
324/613
2014/0029370 A1 * 1/2014 Koshizuka G11C 7/1051
365/233.13

* cited by examiner

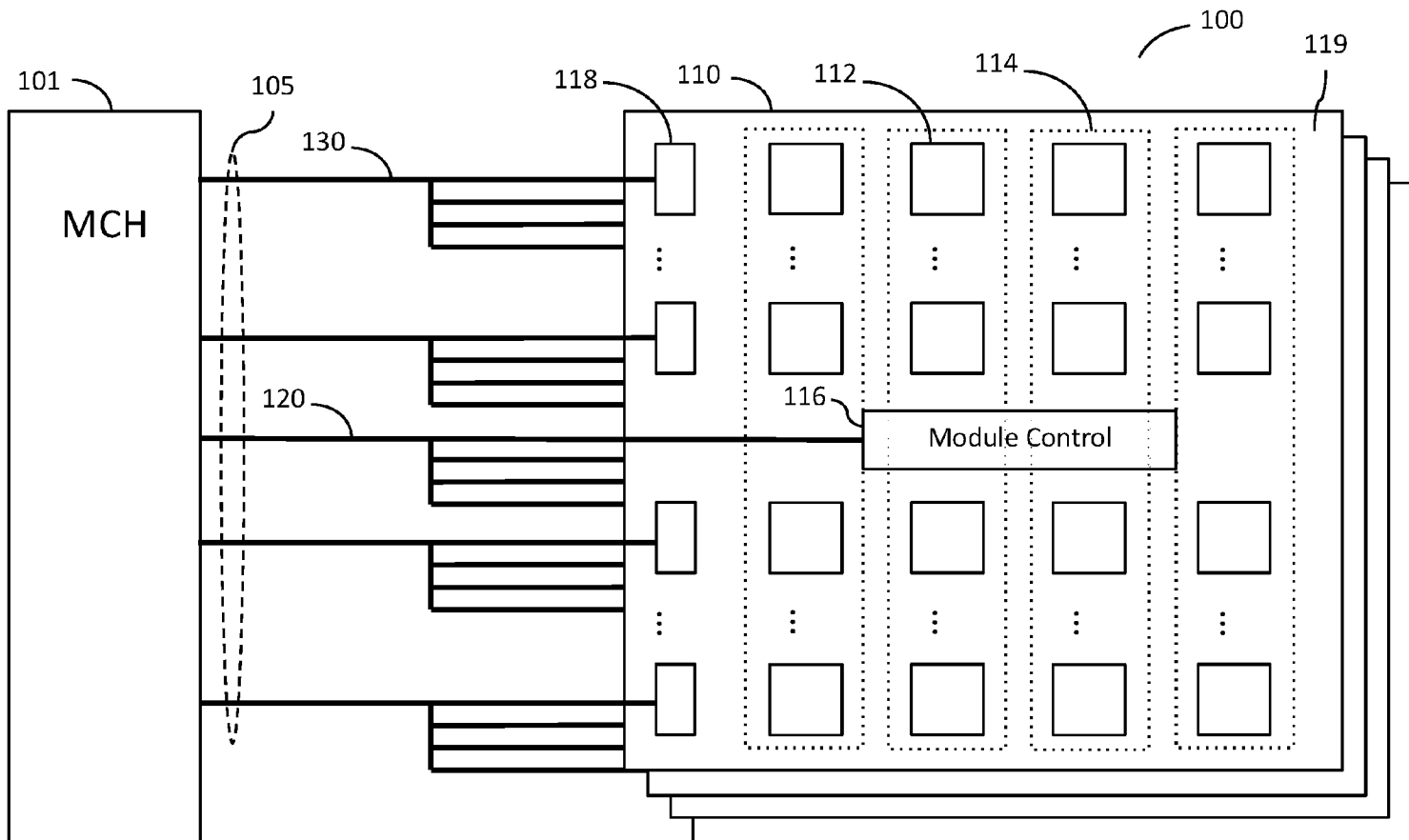


FIG. 1

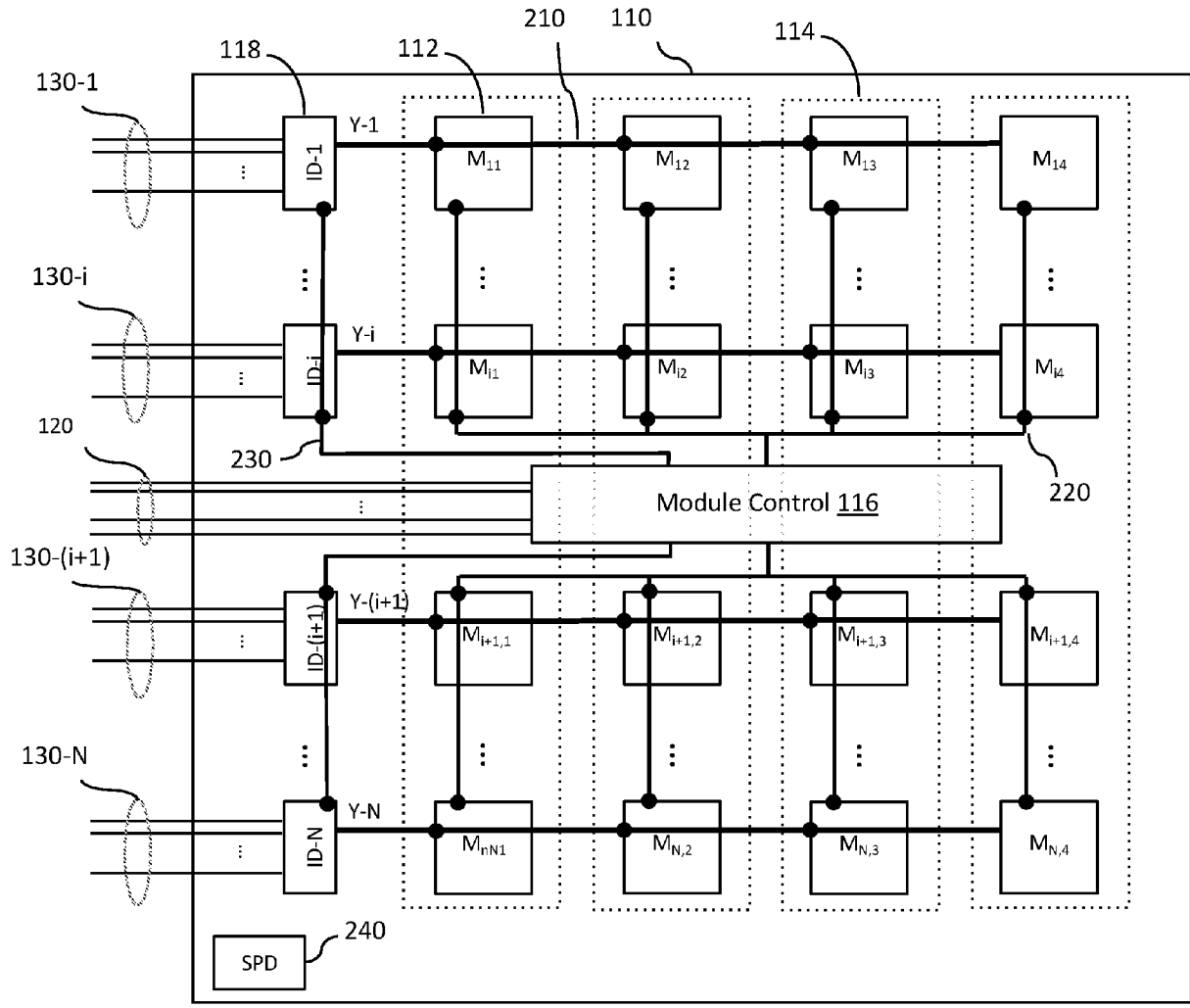


FIG. 2A

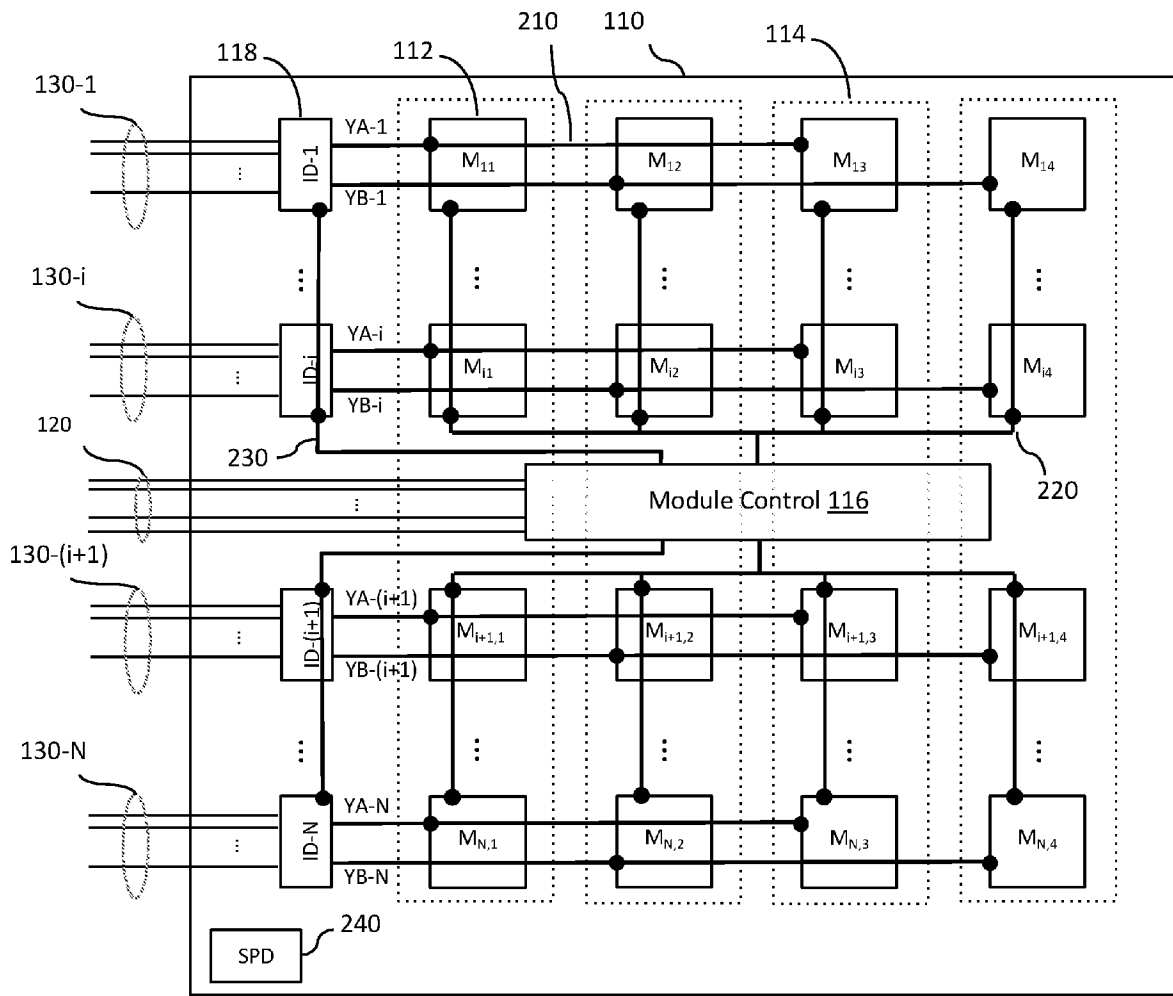


FIG. 2B

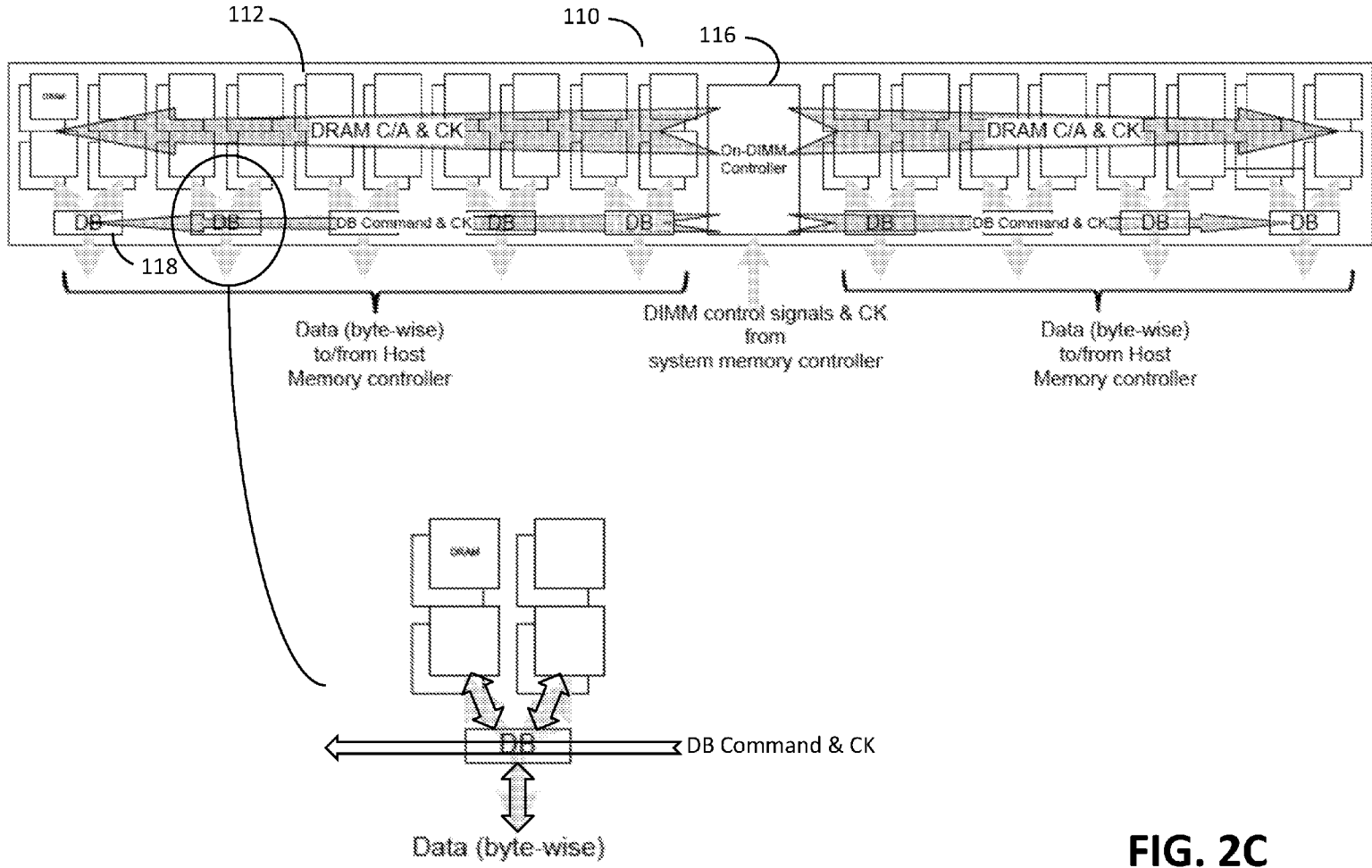


FIG. 2C

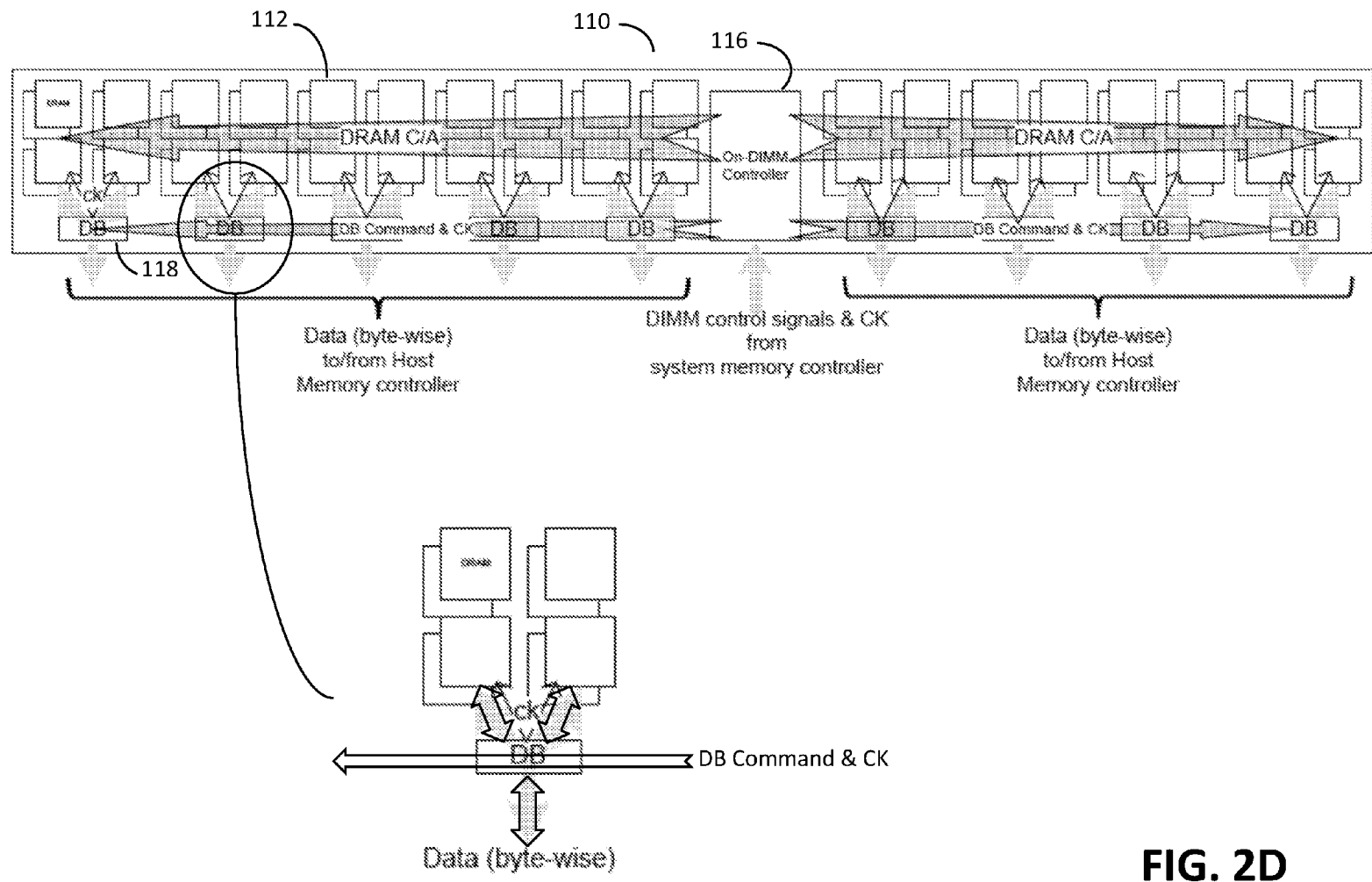


FIG. 2D

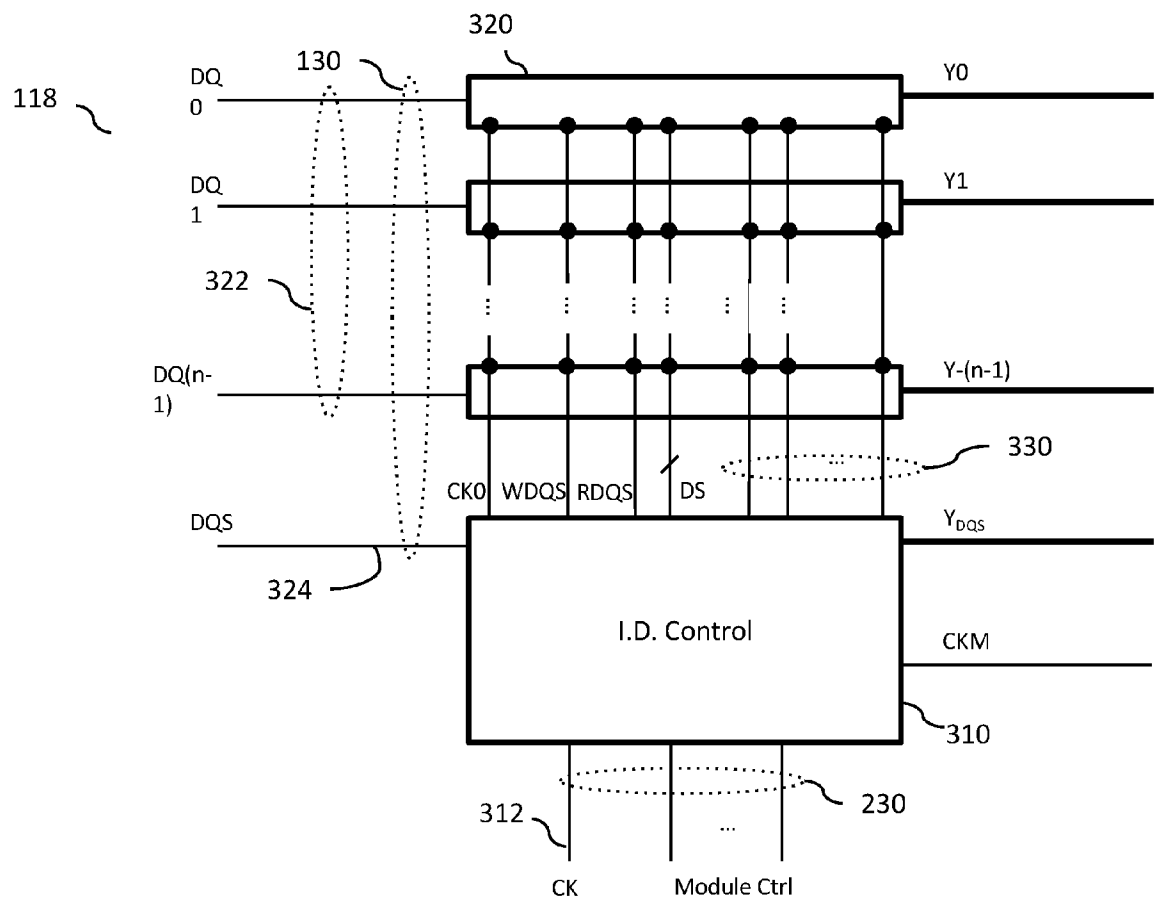


FIG. 3

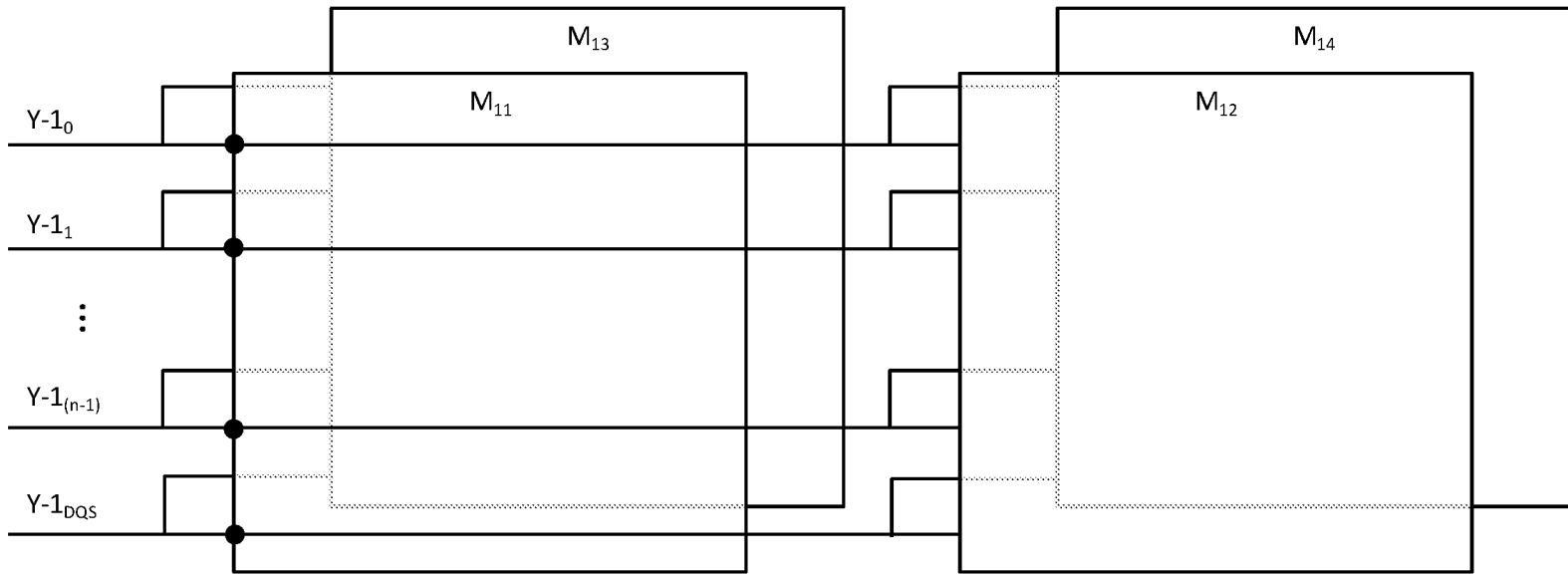


FIG. 4A

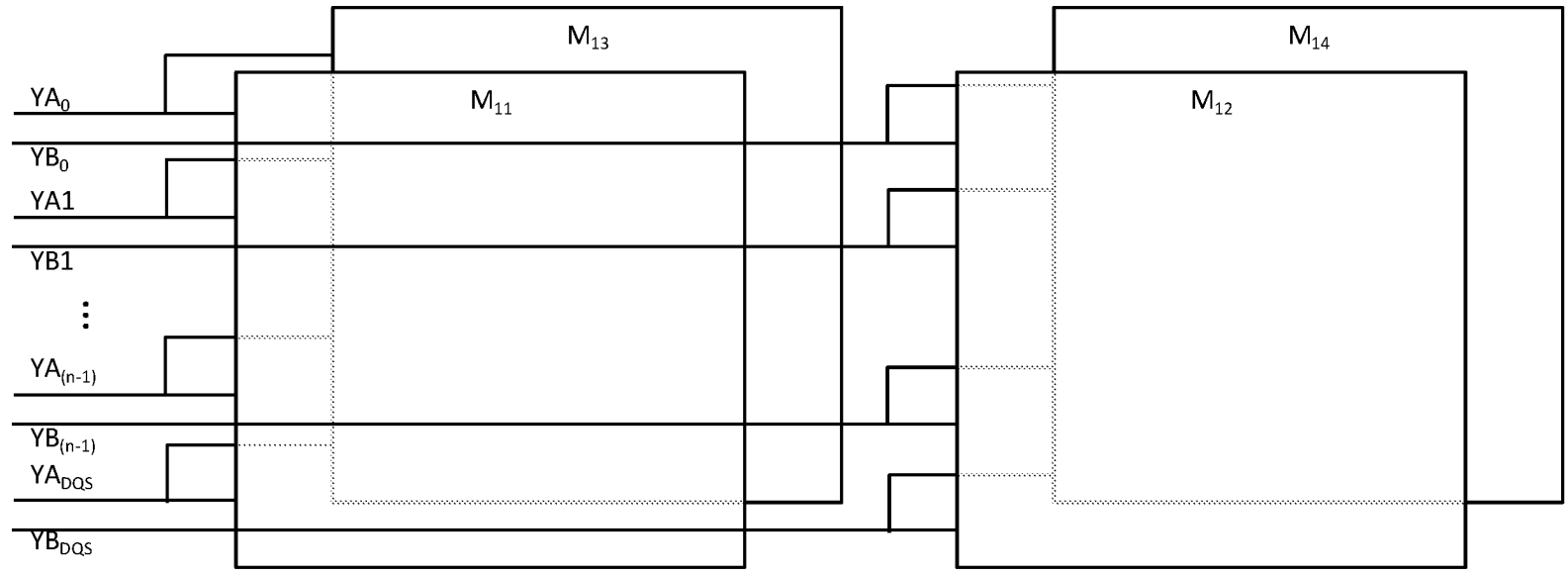


FIG. 4B

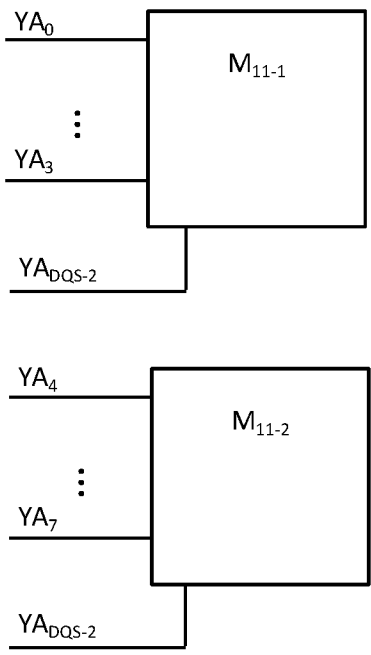


FIG. 5A

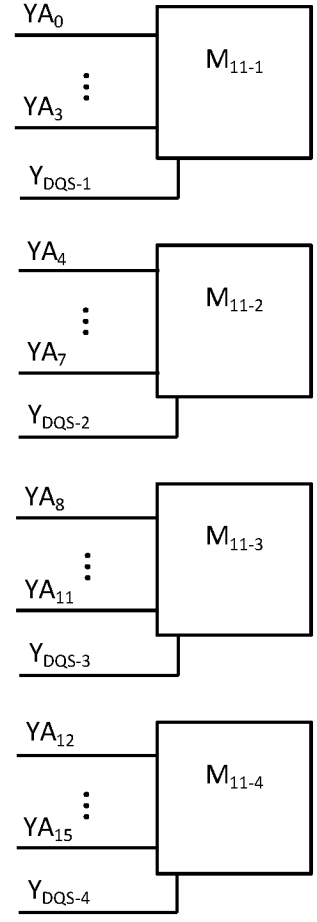


FIG. 5B

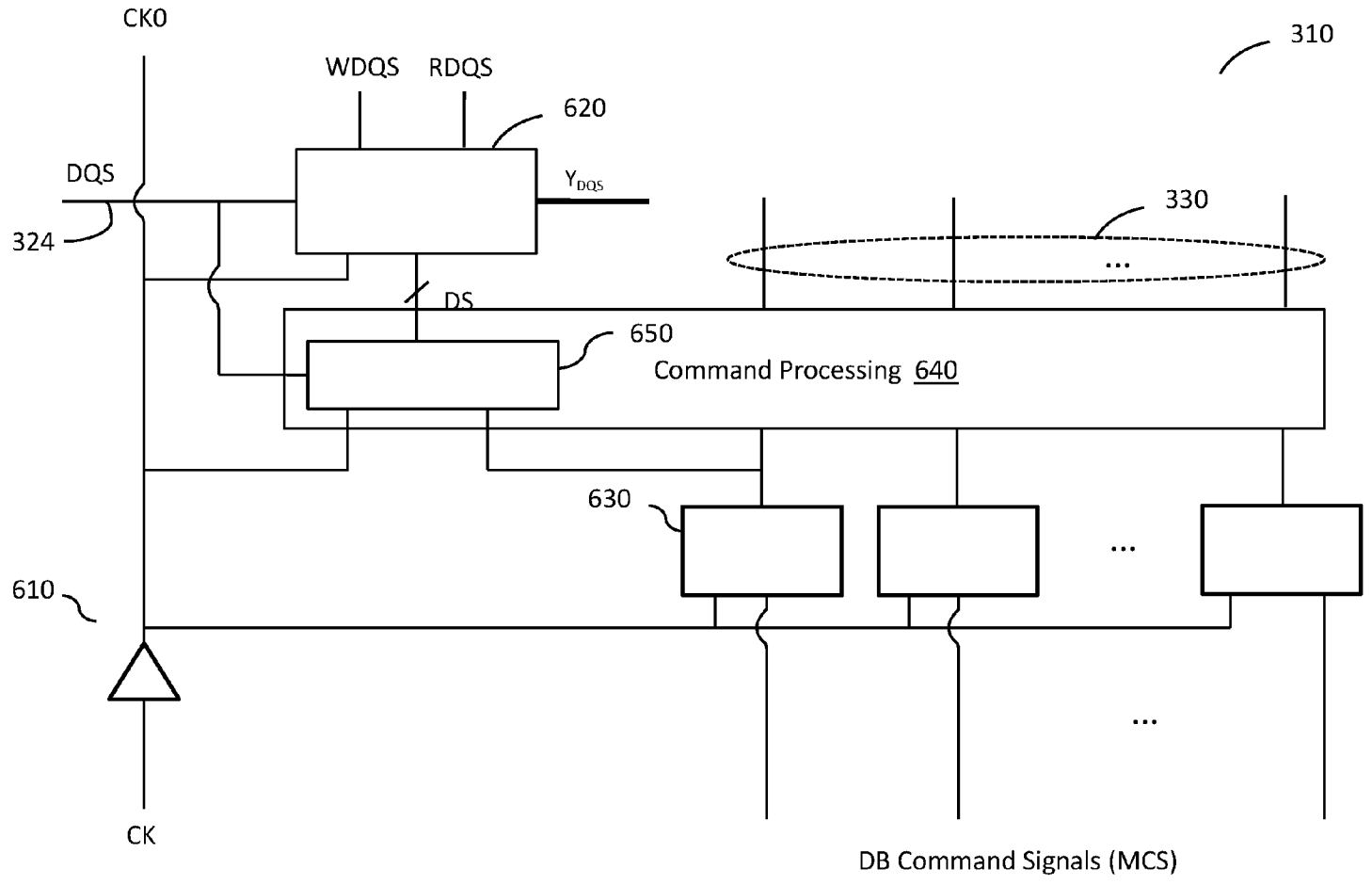


FIG. 6

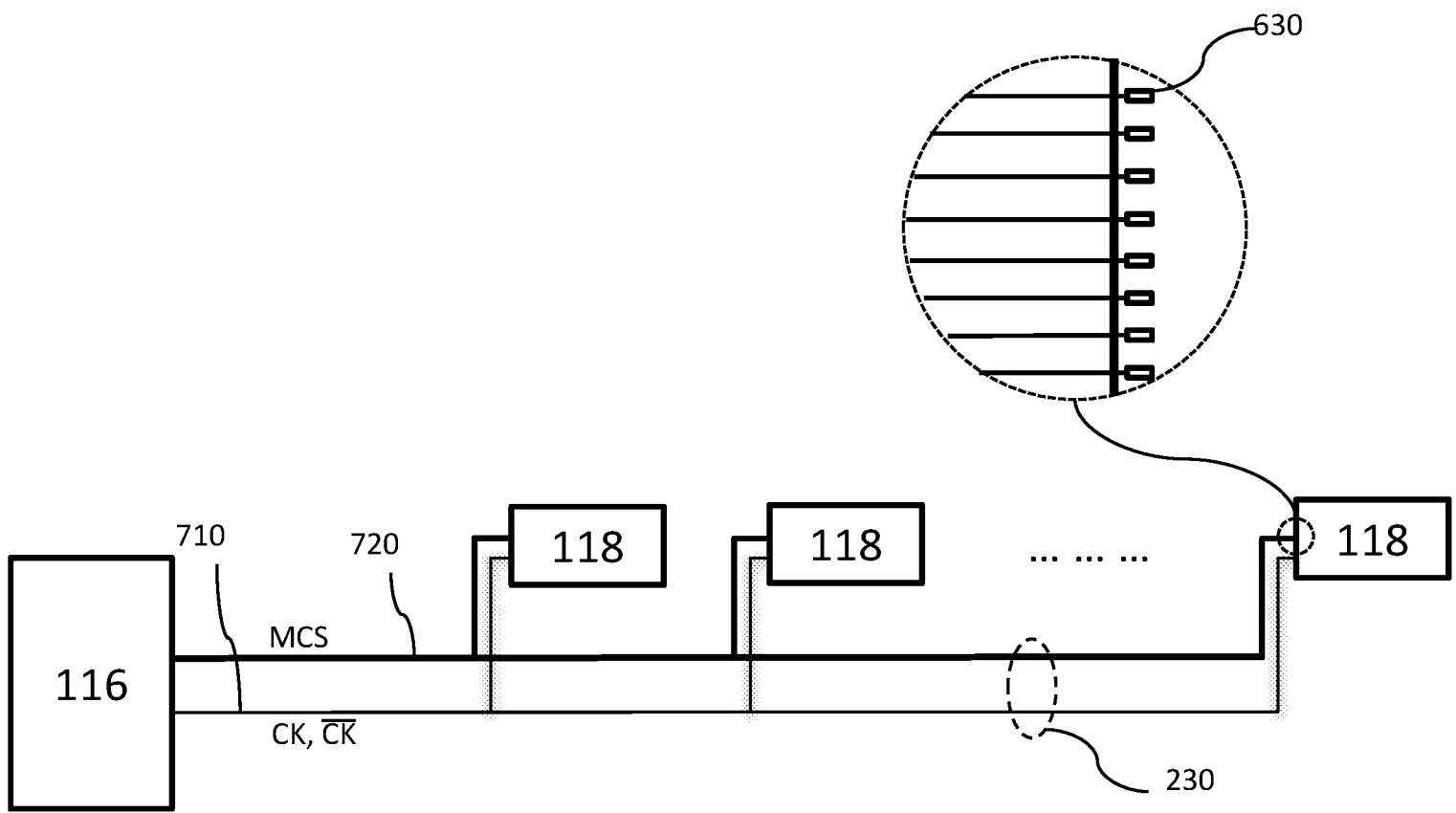


FIG. 7

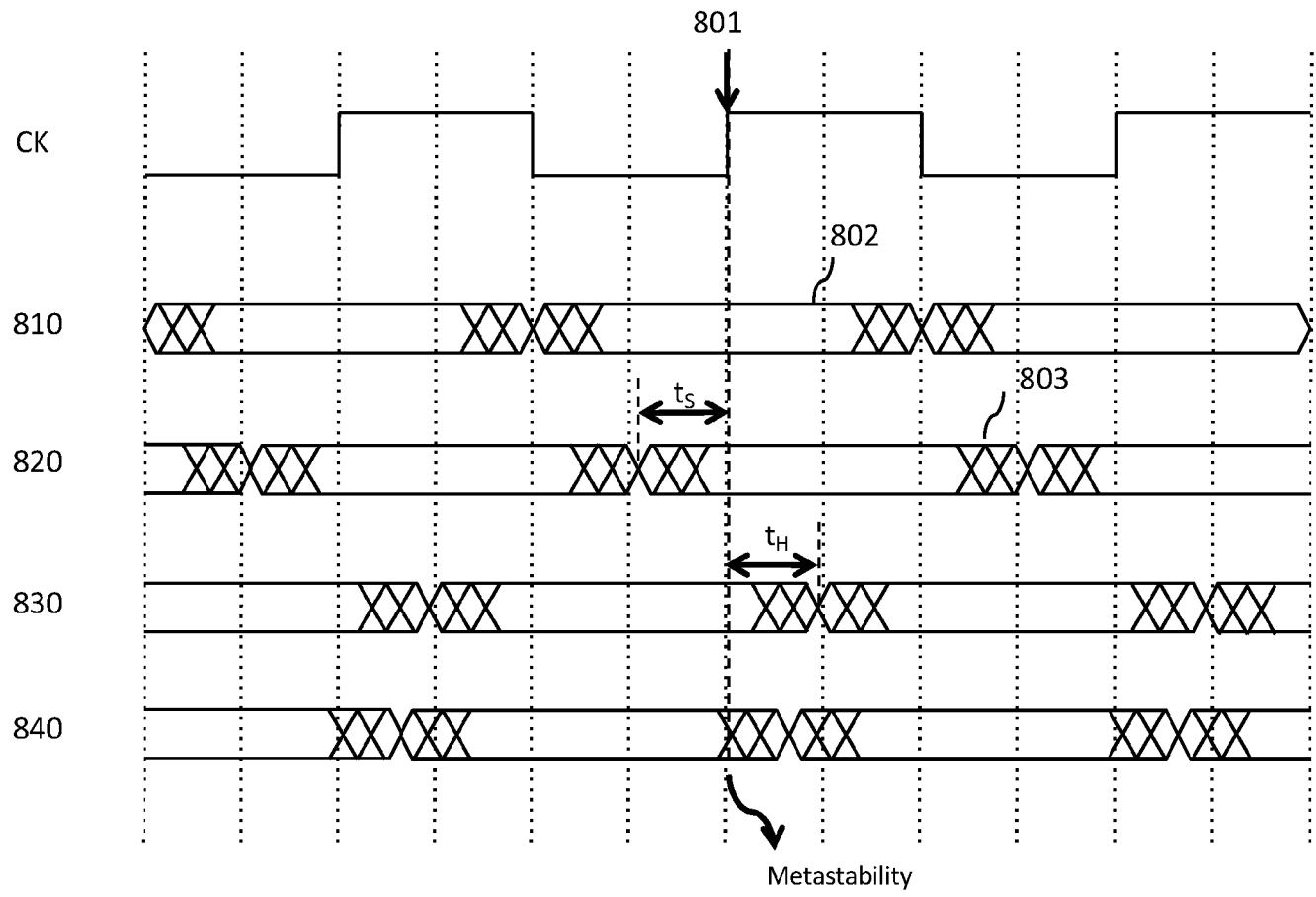


FIG. 8

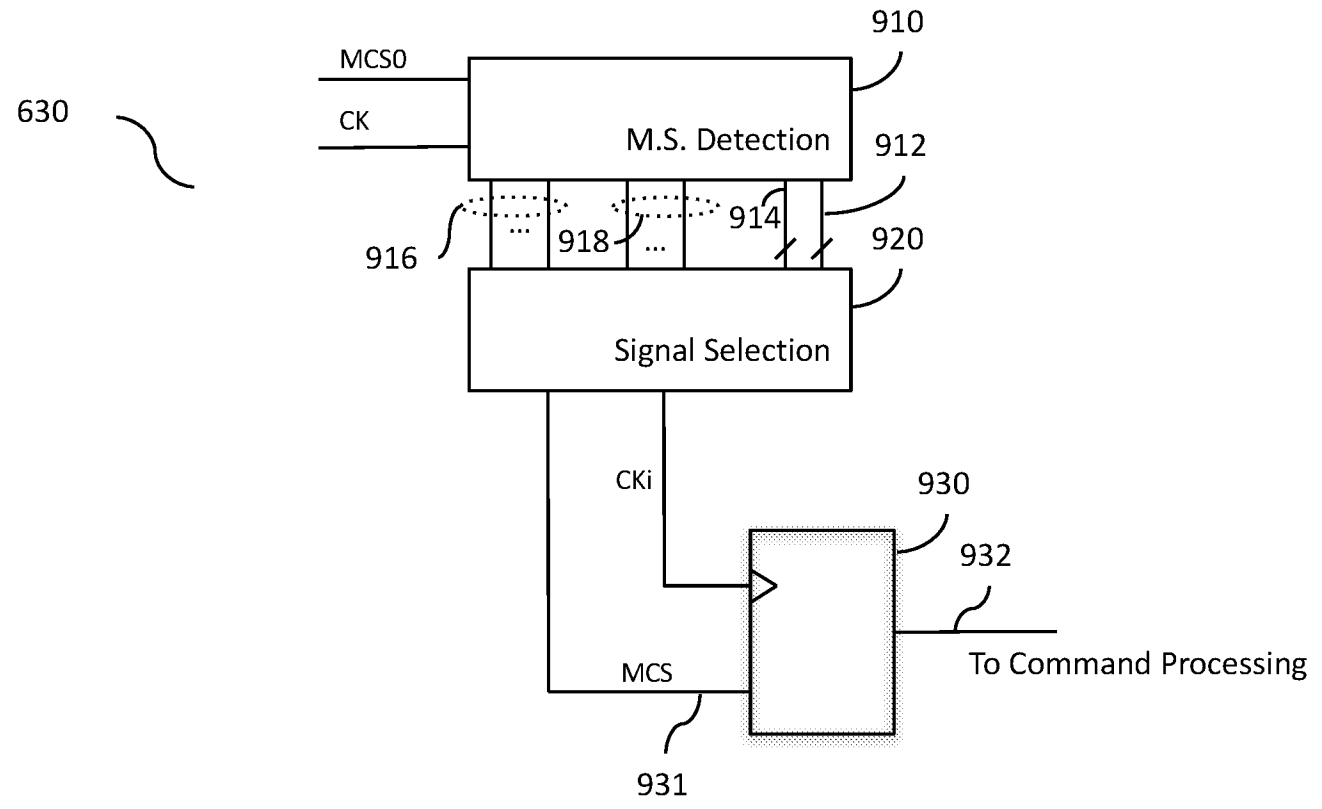


FIG. 9

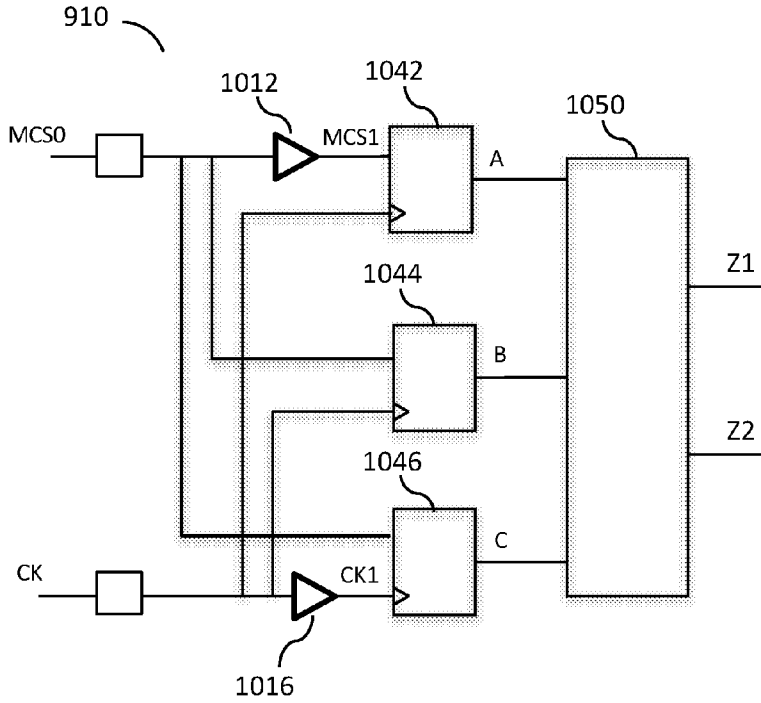


FIG. 10A

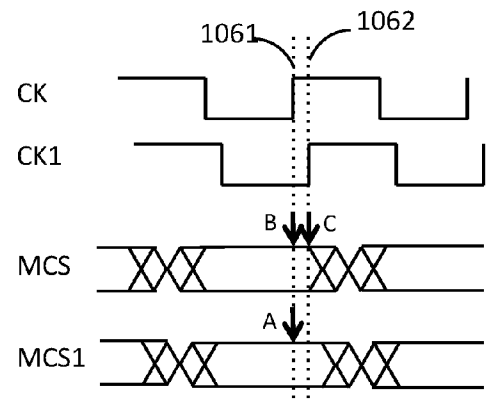


FIG. 10B

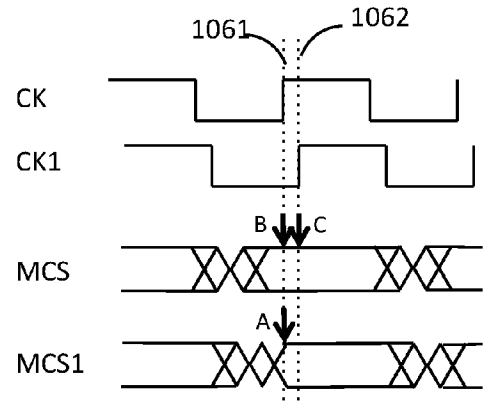


FIG. 10C

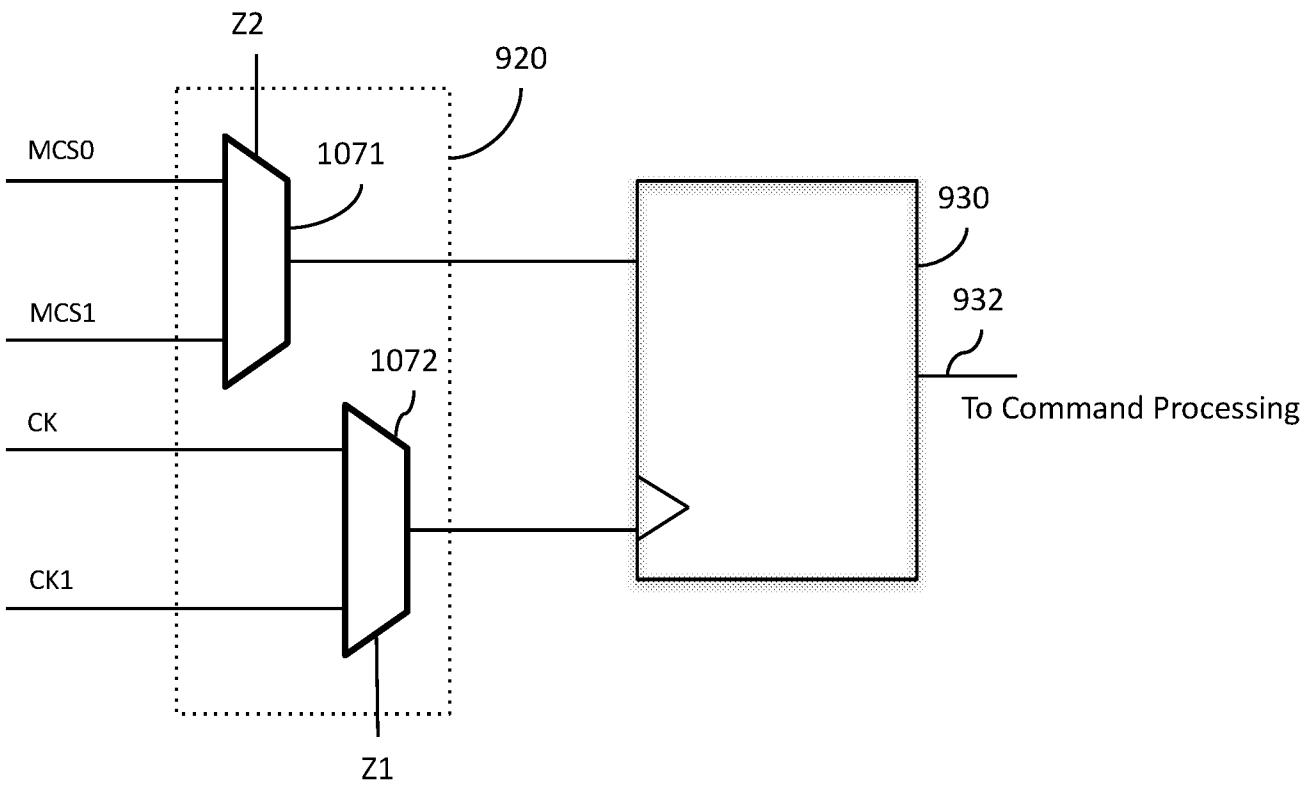


FIG. 10D

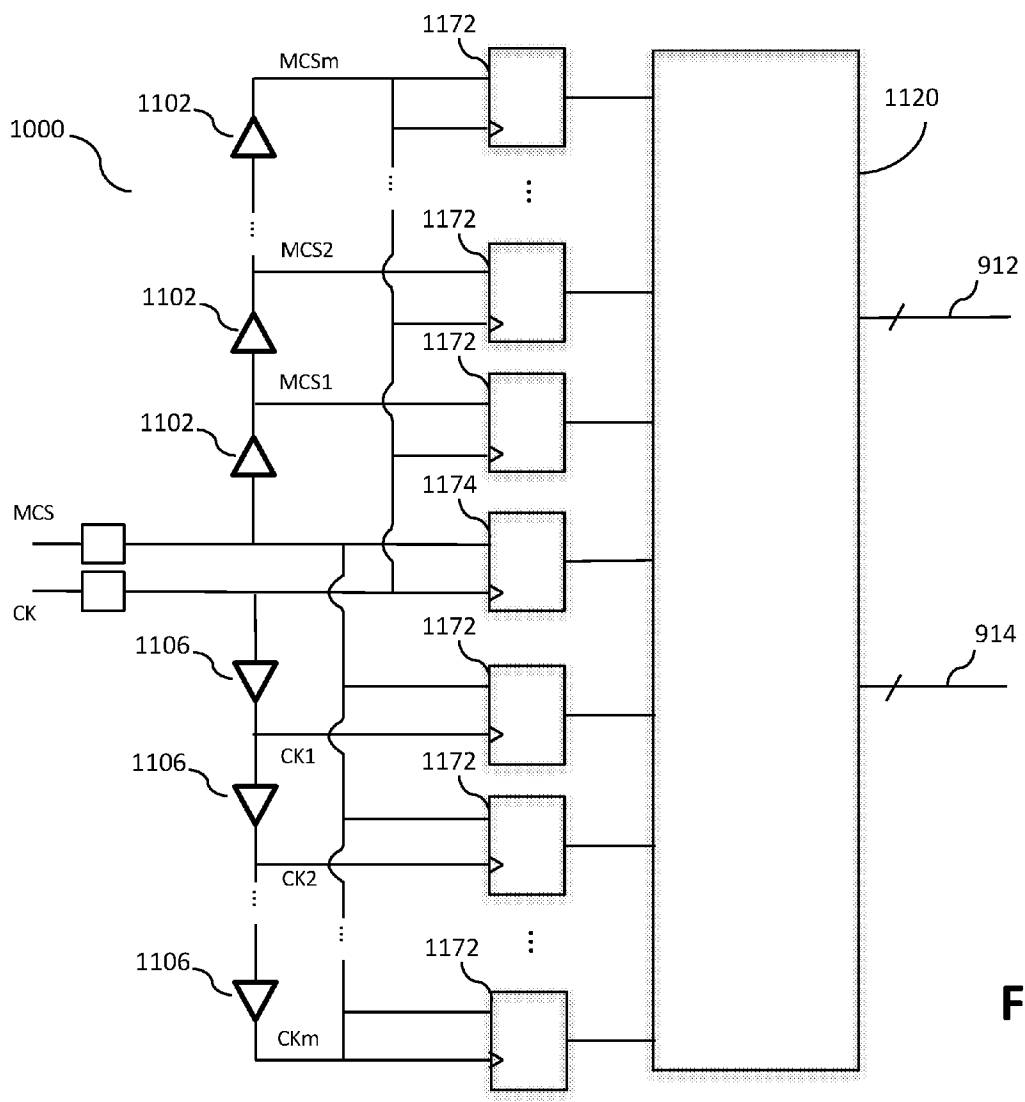


FIG. 11A

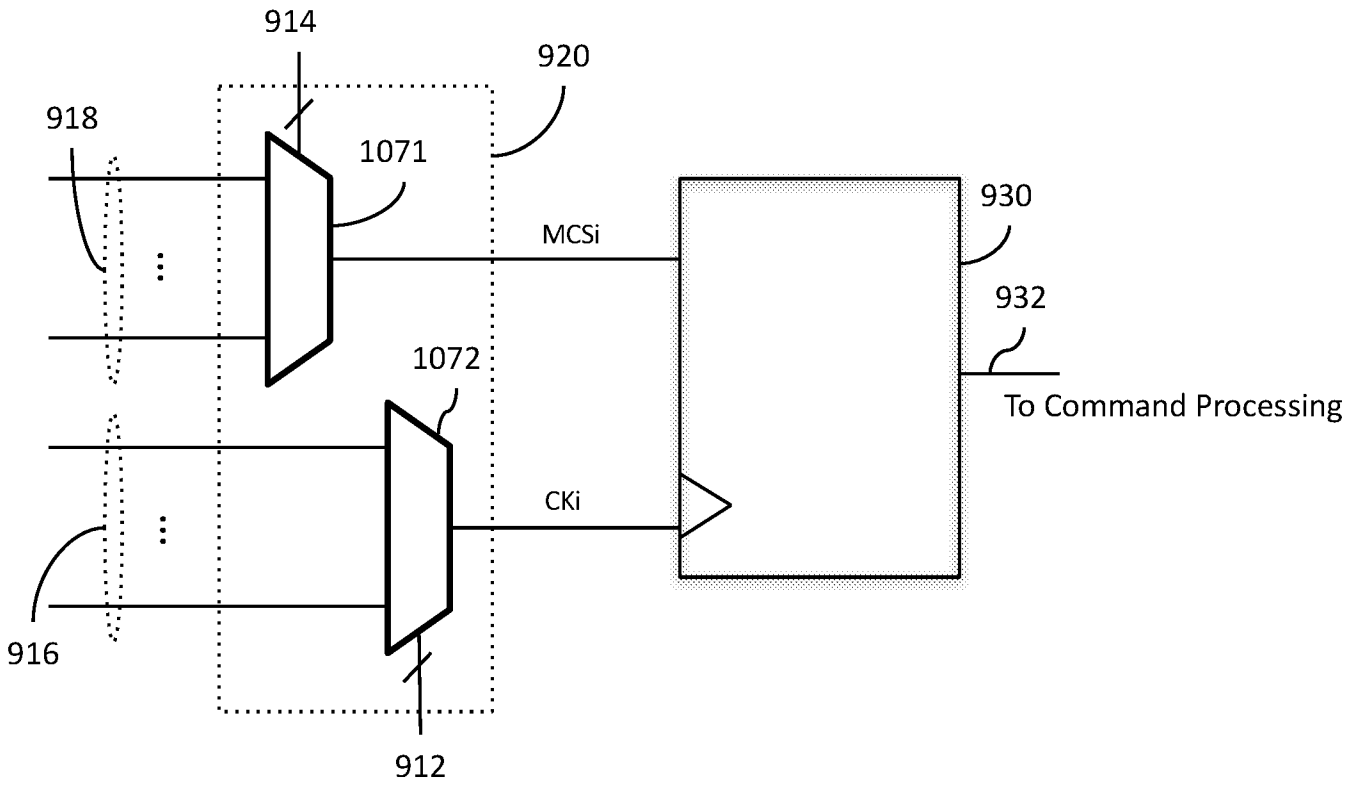


FIG. 11B

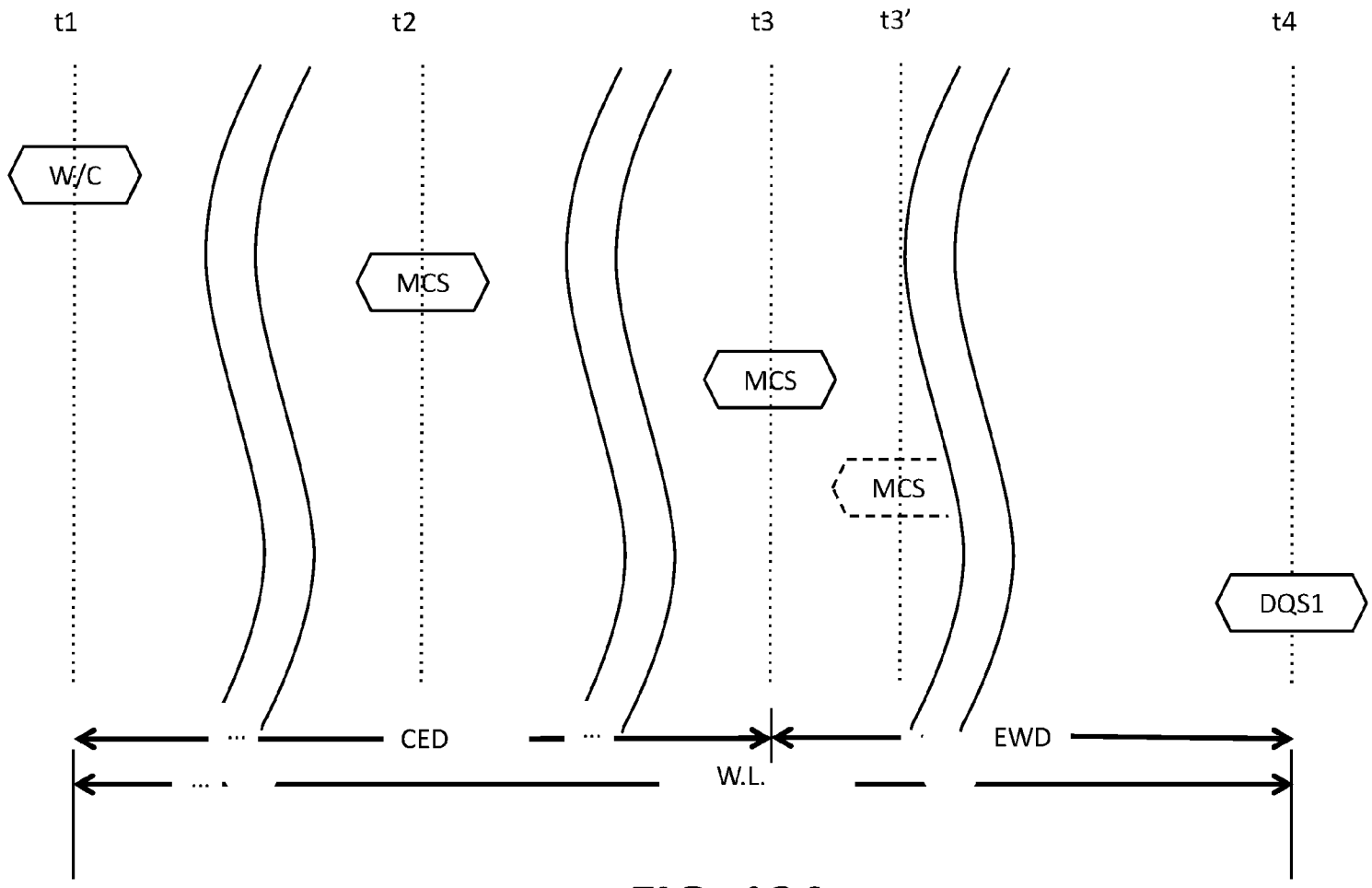


FIG. 12A

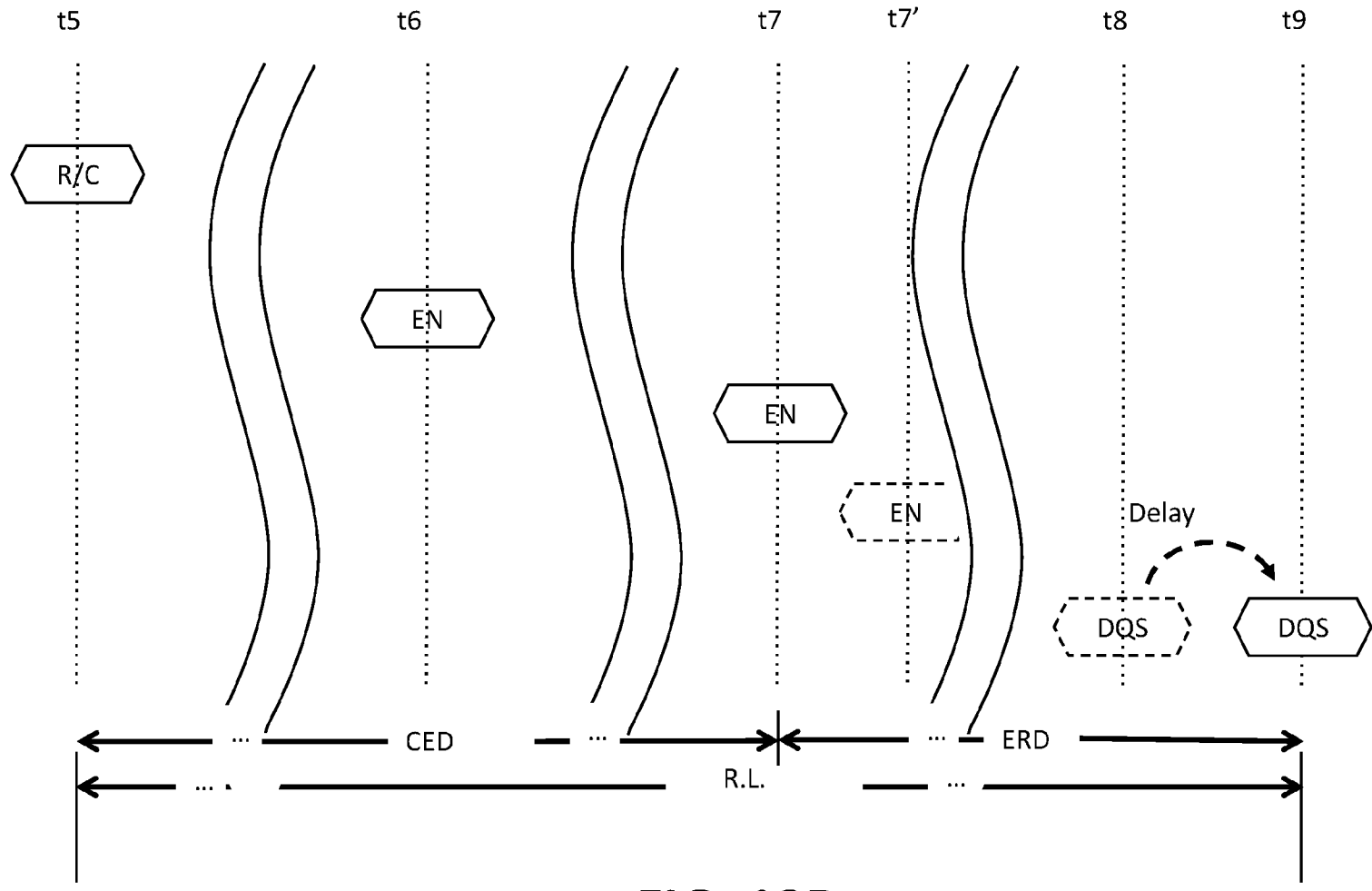


FIG. 12B

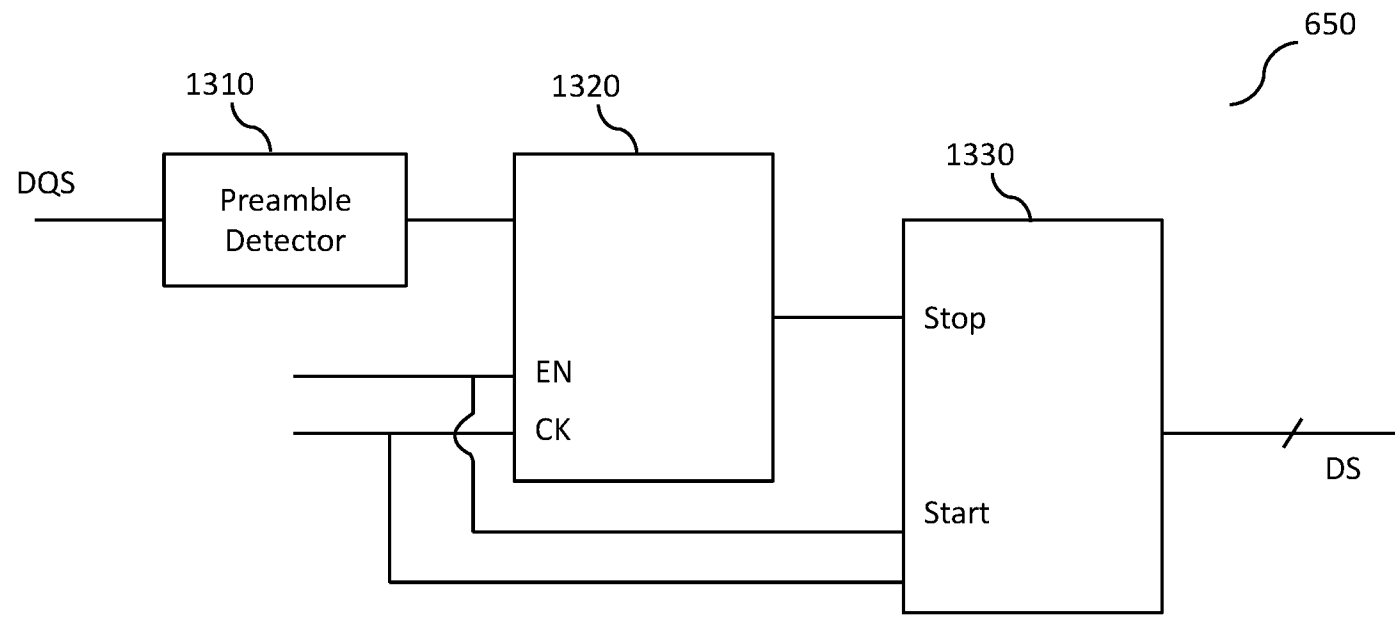


FIG. 13

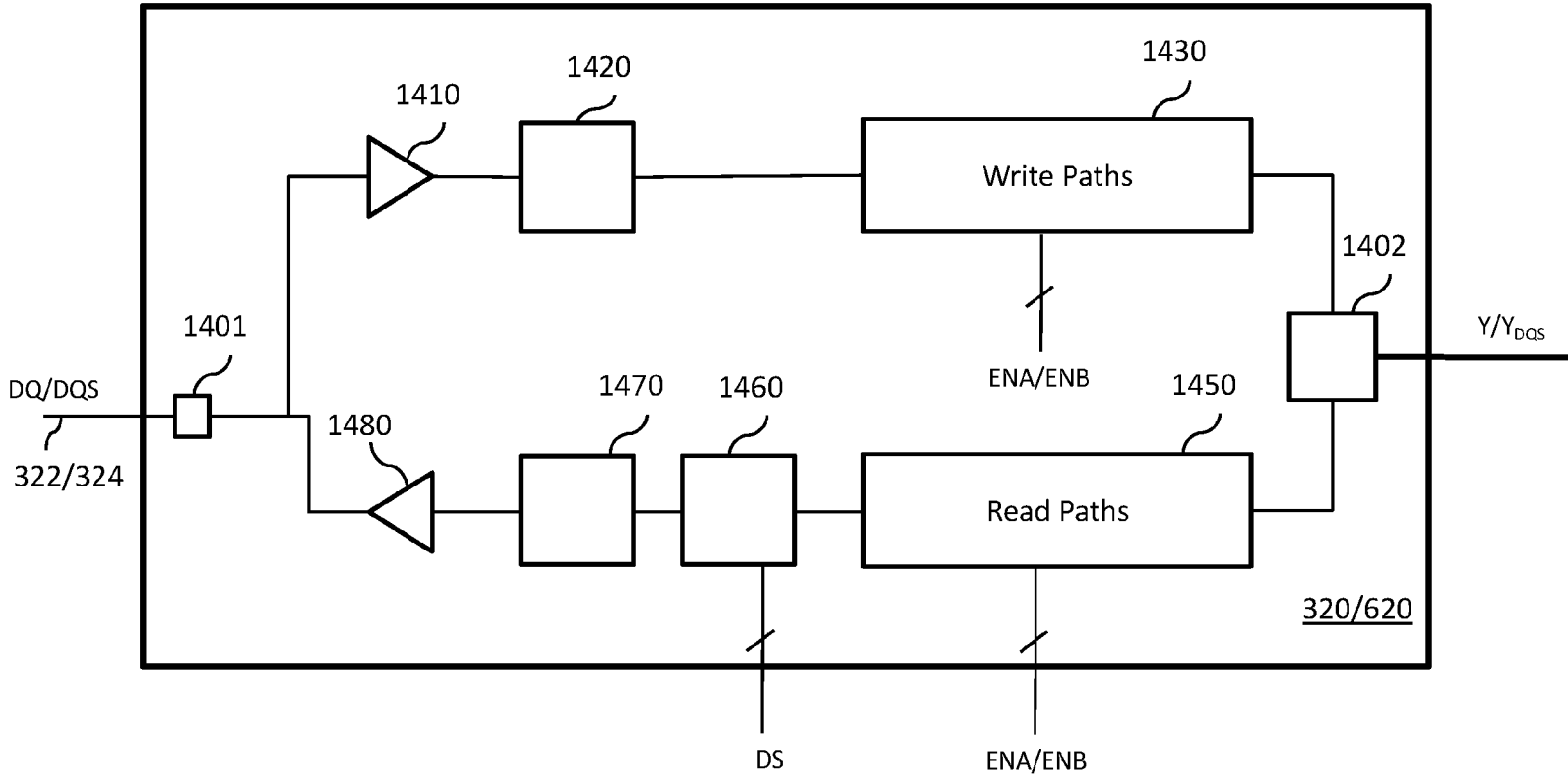


FIG. 14

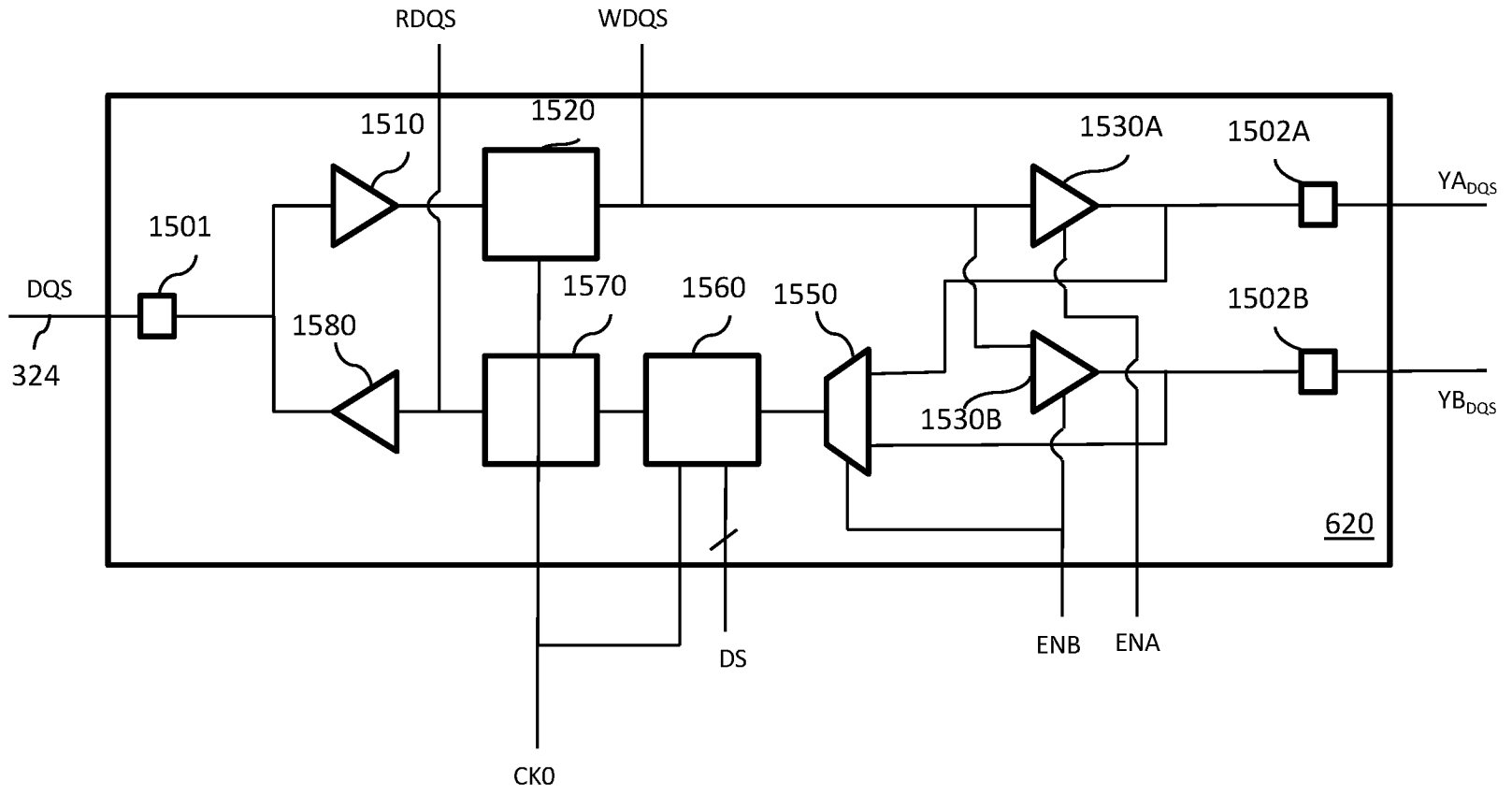


FIG. 15

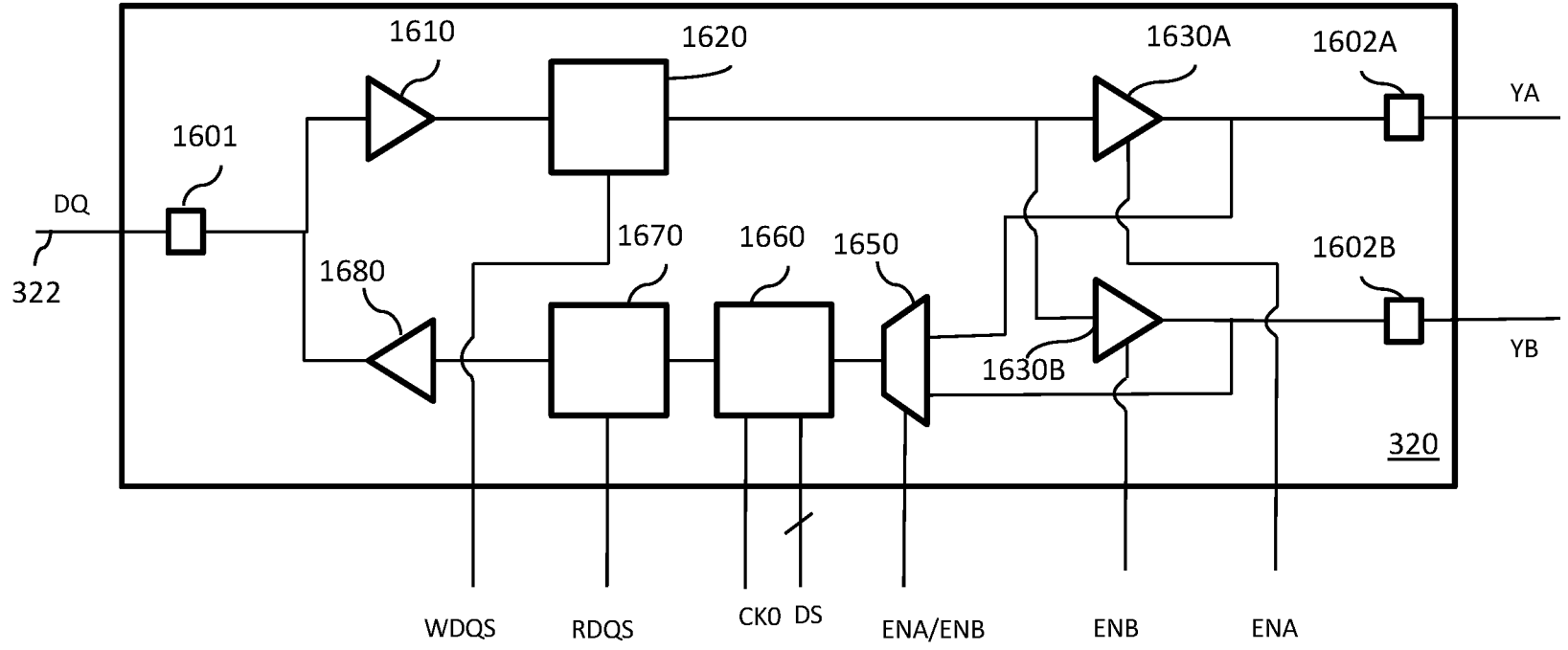


FIG. 16

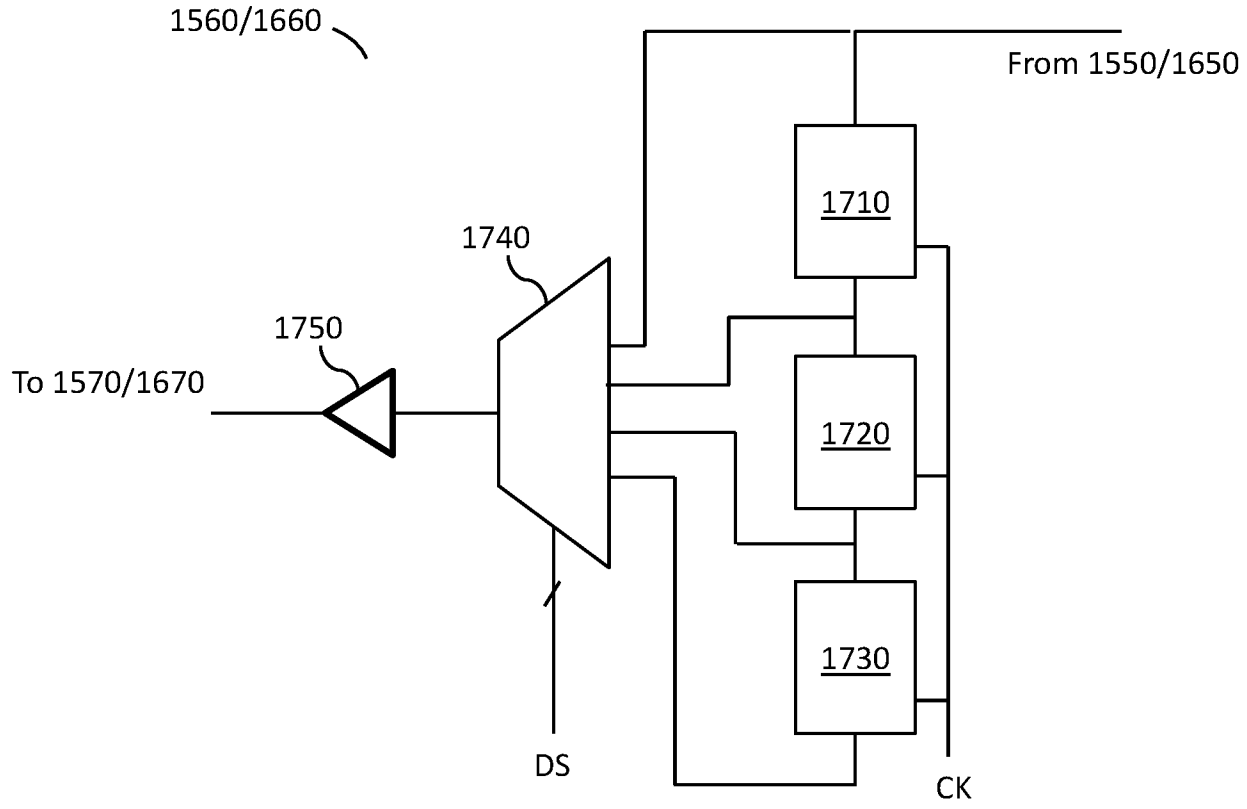


FIG. 17

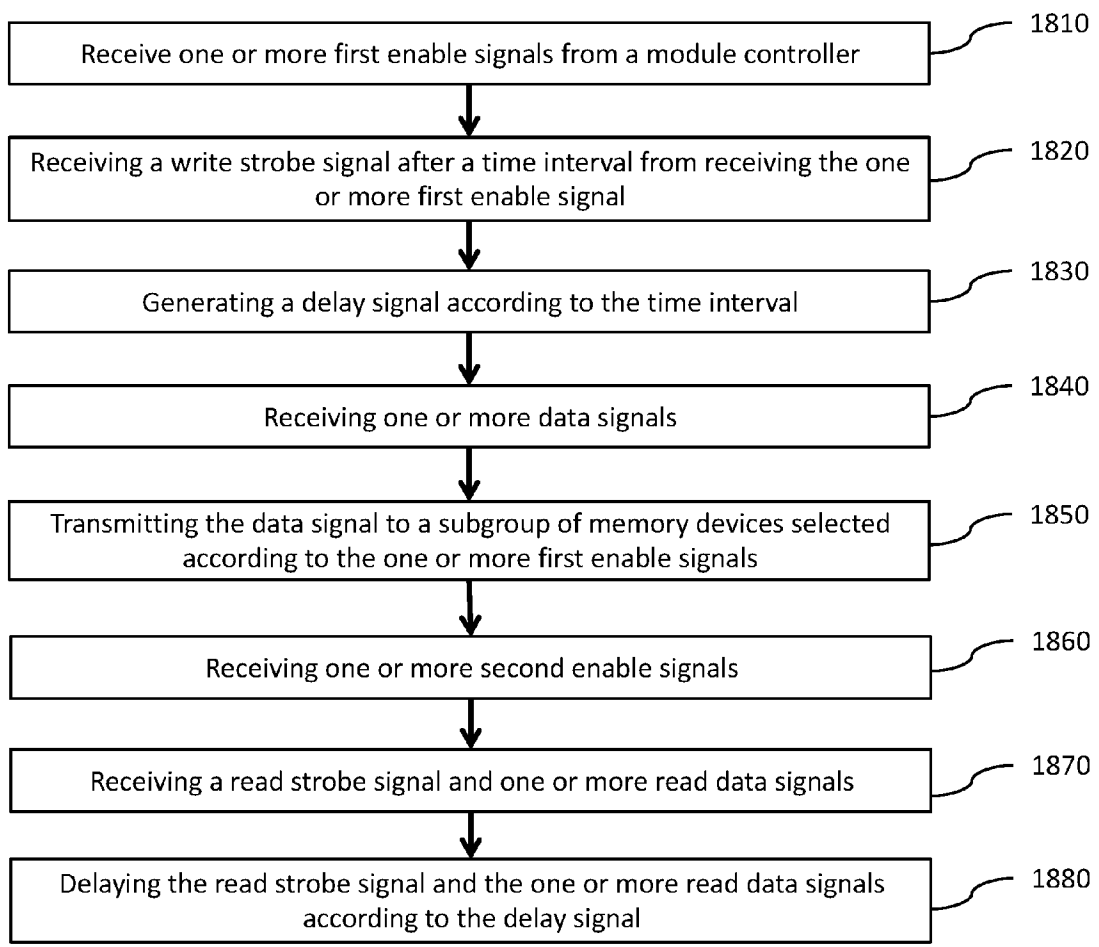


FIG. 18

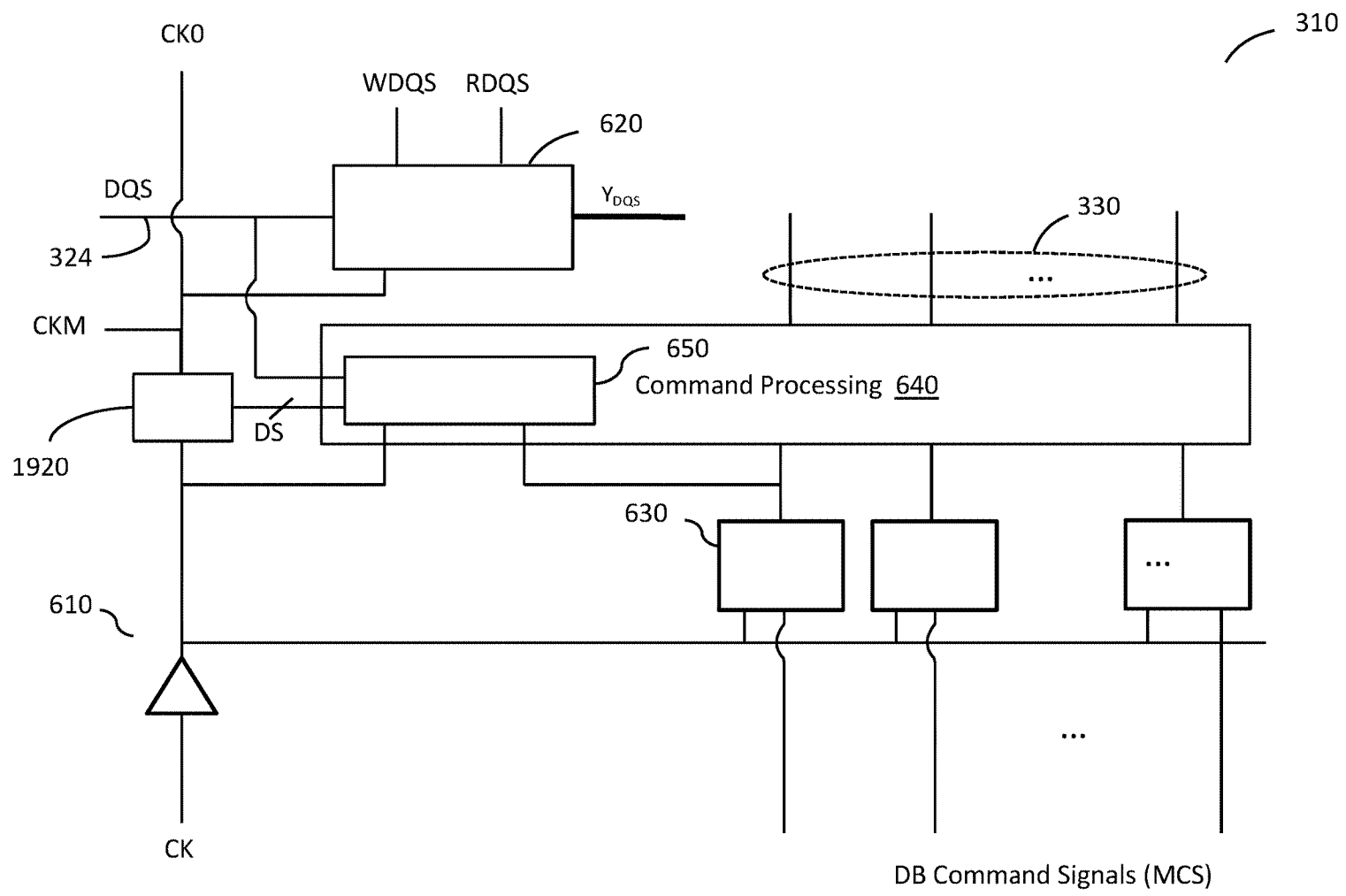


FIG. 19

MEMORY MODULE WITH TIMING-CONTROLLED DATA PATHS IN DISTRIBUTED DATA BUFFERS

CLAIM OF PRIORITY

The present application is a continuation of U.S. patent application Ser. No. 14/846,993, to be issued as U.S. Pat. No. 9,563,587, which is a continuation of U.S. patent application Ser. No. 13/952,599, filed Jul. 27, 2013, issued as U.S. Pat. No. 9,128,632, which claims priority to U.S. Provisional Pat. Appl. No. 61/676,883, filed on Jul. 27, 2012. Each of the above applications is incorporated by reference herein in its entirety.

CROSS REFERENCE TO RELATED APPLICATIONS

The present application is related to commonly-owned U.S. patent application Ser. No. 14/715,486, filed on May 18, 2015; U.S. patent application Ser. No. 13/970,606, filed on Aug. 20, 2013; U.S. patent application Ser. No. 12/504,131, filed on Jul. 16, 2009, now U.S. Pat. No. 8,417,870; U.S. patent application Ser. No. 12/761,179, filed on Apr. 15, 2010, now U.S. Pat. No. 8,516,185; U.S. patent application Ser. No. 13/287,042, filed on Nov. 1, 2011, now U.S. Pat. No. 8,756,364; and U.S. patent application Ser. No. 13/287,081, filed on Nov. 1, 2011, now U.S. Pat. No. 8,516,188; each of which is incorporated herein by reference in its entirety.

FIELD

The disclosure herein is related generally to memory modules, and more particularly to multi-rank memory modules and methods of operation.

BACKGROUND

With recent advancement of information technology and widespread use of the Internet to store and process information, more and more demands are placed on the acquisition, processing, storage and dissemination of vocal, pictorial, textual and numerical information by microelectronics-based combination of computing and communication means. In a typical computer or server system, memory modules are used to store data or information. A memory module usually includes multiple memory devices, such as dynamic random access memory devices (DRAM) or synchronous dynamic random access memory devices (SDRAM), packaged individually or in groups, and/or mounted on a printed circuit board (PCB). A processor or a memory controller accesses the memory module via a memory bus, which, for a single-in-line memory module (SIMM), can have a 32-bit wide data path, or for a dual-in-line memory module (DIMM), can have a 64-bit wide data path.

The memory devices of a memory module are generally organized in ranks, with each rank of memory devices generally having a bit width. For example, a memory module in which each rank of the memory module is 64 bits wide is described as having an "x64" or "by 64" organization. Similarly, a memory module having 72-bit-wide ranks is described as having an "x72" or "by 72" organization.

The memory capacity or memory density of a memory module increases with the number of memory devices on the memory module. The number of memory devices of a

memory module can be increased by increasing the number of memory devices per rank or by increasing the number of ranks.

In certain conventional memory modules, the ranks are selected or activated by control signals from a processor or memory controller during operation. Examples of such control signals include, but are not limited to, rank-select signals, also called chip-select signals. Most computer and server systems support a limited number of ranks per memory module, which limits the memory density of the memory modules that can be used in these computer and server systems.

For memory devices in such as a memory module to be properly accessed, distribution of control signals and a control clock signal in the memory module is subject to strict constraints. In some conventional memory modules, control wires are routed so there is an equal length to each memory component, in order to eliminate variation of the timing of the control signals and the control clock signal between different memory devices in the memory modules. The balancing of the length of the wires to each memory devices compromises system performance, limits the number of memory devices, and complicates their connections.

In some conventional memory systems, the memory controllers include leveling mechanisms for write and/or read operations to compensate for unbalanced wire lengths and memory device loading on the memory module. As memory operating speed and memory density continue to increase, however, such leveling mechanisms are also insufficient to insure proper timing of the control and/or data signals received and/or transmitted by the memory modules.

BRIEF DESCRIPTION OF THE DRAWINGS

FIG. 1 is a diagram illustrating a memory system including at least one memory module according to one embodiment.

FIGS. 2A-2D are each a diagrams illustrating interactions among components in a a memory module according to certain embodiments.

FIG. 3 is a diagram illustrating one of a plurality of data buffers in a memory module according to one embodiment.

FIGS. 4A-4B are each a diagram illustrating data and data strobe signal lines coupled to memory devices in a memory module according to certain embodiments.

FIGS. 5A-5B are diagrams illustrating different numbers of memory devices that can be coupled to each data buffer in a memory module according to certain embodiments.

FIG. 6 is a diagram illustrating a control circuit in a data buffer according to certain embodiments.

FIG. 7 is a diagram illustrating control signals from a module control device to a plurality of data buffers in a memory module according to certain embodiments.

FIG. 8 is a timing diagram illustrating alignment of module control signals with respect to module clock signals.

FIG. 9 is a diagram illustrating a metastability detection circuit and signal adjustment circuit in a data buffer according to certain embodiments.

FIGS. 10A-10C are diagrams illustrating a metastability detection circuit according to certain embodiments.

FIG. 10D is a diagram illustrating a signal adjustment circuit according to certain embodiments.

FIGS. 11A-11B are diagrams illustrating a metastability detection circuit and signal adjustment circuit, respectively, according to certain embodiments.

FIGS. 12A-12B are a timing diagrams illustrating a write operation and a read operation, respectively, performed by a memory module according to one embodiment.

FIG. 13 is a diagram illustrating a delay control circuit in a data buffer according to certain embodiments.

FIG. 14 is a diagram illustrating a DQ or DQS routing circuit in a data buffer according to an embodiment.

FIG. 15 is a diagram illustrating a DQS routing circuit having a delay circuit in a data buffer according to an embodiment.

FIG. 16 is a diagram illustrating a DQ routing circuit having a delay circuit in a data buffer according to an embodiment.

FIG. 17 is a diagram illustrating a delay circuit in a DQ or DQS routing circuit according to an embodiment.

FIG. 18 is a flowchart illustrating a method for data edge alignment according to embodiments.

FIG. 19 is a diagram illustrating a control circuit in a data buffer according to certain embodiments.

DESCRIPTION OF EMBODIMENTS

A memory module according to one embodiment includes memory devices organized in groups, a module control device, and data buffers (DB). The data buffers are sometimes referred to herein as buffer circuits, isolation devices (I.D.) or load reduction devices. The memory module is operable to perform memory operations in response to memory commands (e.g., read, write, refresh, precharge, etc.), each of which is represented by a set of control/address (C/A) signals transmitted by the memory controller to the memory module. The C/A signals may include, for example, a row address strobe signal (/RAS), a column address strobe signal (/CAS), a write enable signal (/WE), an output enable signal (/OE), one or more chip select signals, row/column address signals, and bank address signals. The memory controller may also transmit a system clock signal to the memory module. In one embodiment, the C/A signals and the system clock signal are received by the module control device, which generates a set of module command signals and a set of module control signals in response to each memory command from the memory controller. The module command signals are transmitted by the module control device to the memory devices via module C/A signal lines, and the module control signals (referred sometimes herein as module control signals) are transmitted by the module control device to the buffer circuits via module control signal lines.

The buffer circuits are associated with respective groups of memory devices and are distributed across the memory module at positions corresponding to the respective groups of memory devices. Thus, during certain high speed operations, each module control signal may arrive at different buffer circuits at different points of time across more than one clock cycle of the system clock. Also, each buffer circuit associated with a respective group of memory devices is in the data paths between the respective group of memory devices and the memory controller. Thus, the memory controller does not have direct control of the memory devices. In one embodiment, each group of memory devices include at least two subgroups, each subgroup including at least one memory device. Each buffer circuit is configured to select a subgroup in the respective group of memory devices to communicate data with the memory controller in response to the module control signals. Thus, the memory module can have more ranks of memory devices than what is supported by the memory controller.

In one embodiment, each buffer circuit includes metastability detection circuits to detect metastability condition in the module control signals and signal adjustment circuits to adjust the module control signals and/or a module clock signal to mitigate any metastability condition in the module control signals.

Further, in one embodiment, each buffer circuit includes signal alignment circuits that determine, during a write operation, a time interval between a time when one or more module control signals are received from the module control circuit and a time when a strobe or data signal is received from the memory controller. This time interval is used during a subsequent read operation to time transmission of read data to the memory controller, such that the read data arrives at the memory controller within a time limit in accordance with a read latency parameter associated with the memory system.

FIG. 1 shows a system 100 including a memory controller (MCH) 101 and one or more memory modules 110 coupled to the MCH by a memory bus 105, according to one embodiment. As shown, the memory bus includes C/A signal lines 120 and groups of system data/strobe signal lines 130. Also as shown, each memory module 110 has a plurality of memory devices 112 organized in a plurality of ranks 114. Each memory module 110 further includes a module control circuit (module controller or module control device) 116 coupled to the MCH 101 via the C/A signal lines 120, and a plurality of buffer circuits or isolation devices 118 coupled to the MCH 101 via respective groups of system data/strobe signal lines 130. In one embodiment, the memory devices 112, the module control circuit 116 and the isolation devices 118 can be mounted on a same side or different sides of a printed circuit board (module board) 119.

In the context of the present description, a rank refers to a set of memory devices that are selectable by a same chip select signal from the memory controller. The number of ranks of memory devices in a memory module 110 may vary. For example, as shown, each memory module 110 may include four ranks of memory devices 112. In another embodiment, the memory module 110 may include 2 ranks of memory devices. In yet another embodiment, the memory module may include six or more ranks of memory devices 112.

In the context of the present description, a memory controller refers to any device capable of sending instructions or commands, or otherwise controlling the memory devices 112. Additionally, in the context of the present description, a memory bus refers to any component, connection, or groups of components and/or connections, used to provide electrical communication between a memory module and a memory controller. For example, in various embodiments, the memory bus 105 may include printed circuit board (PCB) transmission lines, module connectors, component packages, sockets, and/or any other components or connections that provide connections for signal transmission.

Furthermore, the memory devices 112 may include any type of memory devices. For example, in one embodiment, the memory devices 112 may include dynamic random access memory (DRAM) devices. Additionally, in one embodiment, each memory module 110 may include a dual in-line memory module (DIMM).

Referring to FIG. 2A, which illustrates one memory module 110 according to an embodiment, the module control device 116 receives system memory commands represented by a set of system control/address (C/A) signals from the MCH 101 via signal lines 120 and generates module

command signals and module control signals based on memory commands from the system. The module control device **116** also received a system clock MCK and generates a module clock signal CK in response to the system clock signal MCK. The MCK signal may include a pair of complementary clock signals, MCK and $\overline{\text{MCK}}$, and the module clock signal may include a pair of complementary clock signals CK and $\overline{\text{CK}}$.

Examples of the system C/A signals include, but are not limited to, Chip Select (or /CS) signal, which is used to select a rank of memory devices to be accessed during a memory (read or write) operation; Row Address Strobe (or /RAS) signal, which is used mostly to latch a row address and to initiate a memory cycle; Column Address Strobe (or /CAS) signal, which is used mostly to latch a column address and to initiate a read or write operation; address signals, including bank address signals and row/column address signals, which are used to select a memory location on a memory device or chip; Write Enable (or /WE) signal, which is used to specify a read operation or a write operation; Output Enable (or /OE) signal, which is used to prevent data from appearing at the output until needed during a read operation, and the system clock signal MCK.

Examples of module command signals include, but are not limited to module /CS signals, which can be derived from the system /CS signals and one or more other system C/A signals, such as one or more bank address signals and/or one or more row/column address signals; a module /RAS signal, which can be, for example, a registered version of the system /RAS signal; a module /CAS signal, which can be, for example, a registered version of the system /CAS signal; module address signals, which can be, for example, registered versions of some or all of the address signals; a module /WE signal, which can be, for example, a registered version of the system /WE signal; a module /OE signal, which can be, for example a registered version of the system /OE signal. In certain embodiments, the module command signals may also include the module clock signal CK.

Examples of module control signals include, but are not limited to a mode signal (MODE), which specifies a mode of operation (e.g., test mode or operating mode) for the isolation devices **118**; one or more enable signals, which are used by an isolation device to select one or more subgroups of memory devices to communicate data with the memory controller; and one or more ODT signals, which are used by the isolation devices to set up on-die termination for the data/strobe signals. In one embodiment, the module control signals are transmitted to the isolation devices **118** via respective module control signal lines **230**. Alternatively, the module control signals can be packetized before being transmitted to the isolation devices **118** via the module control signal lines and decoded/processed at the isolation devices.

Module control device **116** transmits the module command signals to the memory devices **112** via module C/A signal lines **220**. The memory devices **112** operate in response to the module command signals to receive write data or output read data as if the module command signals were from a memory controller. The module control device transmits the module control signals together with the module clock signal CK to the isolation devices **118** via module control signal lines **230**. As shown in FIG. 2, at least some of the memory devices in a same rank share a same set of module C/A signal lines **220**, and at least some of the isolation devices **118** share a same set of module control signal lines **230**.

As shown in FIGS. 2A and 2B, each rank **114** includes N memory devices, where N is an integer larger than one. For example, a first rank includes memory devices $M_{11}, \dots, M_{11}, M_{1+1,1}, \dots, M_{N1}$, a second rank includes memory devices $M_{12}, \dots, M_{12}, \dots, M_{1+1,2}, \dots, M_{N2}$, and so on. In one embodiment, the memory devices **112** are also organized in groups or sets, with each group corresponding to a respective group of system data/strobe signal lines **130** and including at least one memory device from each rank. For example, memory devices $M_{11}, M_{12}, M_{13},$ and M_{14} form a first group of memory devices, memory devices $M_{11}, M_{12}, M_{13},$ and M_{14} form an i^{th} group of memory devices, and so on.

As shown, the isolation devices **118** are associated with respective groups of memory devices and are coupled between respective groups of system data/strobe signal lines **130** and the respective groups of memory devices. For example, isolation device ID-1 among the isolation devices **118** is associated with the first group of memory devices $M_{11}, M_{12}, M_{13},$ and M_{14} and is coupled between the group of system data/strobe signal lines **130-1** and the first group of memory devices, isolation devices ID-i among the isolation devices **118** is associated with the i^{th} group of memory devices $M_{11}, M_{12}, M_{13},$ and M_{14} and is coupled between the group of system data/strobe signal lines **130-i** and the i^{th} group of memory devices, and so on.

In one embodiment, each group or sets of memory devices are coupled to the associated isolation device **118** via a set of module data/strobe lines **210**. Each group or set of memory devices is organized in subgroups or subsets, with each subgroup or subset including at least one memory device. The subgroups in a group of memory devices may be coupled to the associated isolation device **118** via a same set of module data/strobe lines **210** (as shown in FIG. 2A) or via respective subsets of module data/strobe lines **210** (as shown in FIG. 2B). For example, as shown in FIG. 2B, in the first group of memory devices, memory devices M_{11} and/or M_{13} form a first subgroup, and memory devices M_{12} and/or M_{14} form a second subgroup; in the i^{th} group of memory devices, memory devices M_{11} and/or M_{13} form a first subgroup, and memory devices M_{12} and/or M_{14} form a second subgroup; and so on. The first subgroup of at least one memory device in each group of memory devices is coupled to the associated isolation device **118** via an associated first subset of module data/strobe lines YA, and the second subgroup of at least one memory device in each group of memory devices is coupled to the associated isolation device via an associated second subset of module data/strobe lines YB, as shown. For example, memory devices M_{11} and/or M_{13} form the first subgroup are/is coupled to the isolation device ID-1 via the corresponding first subset of module data/strobe lines YA-1, and memory devices M_{12} and/or M_{14} form the second subgroup are/is coupled to the isolation device ID-1 via the corresponding second subset of module data/strobe lines YA-2.

In one embodiment, the isolation devices **118** are in the data paths between the MCH **101** and the memory module **110** and include data buffers between the MCH **101** and the respective groups of memory devices. In one embodiment, each isolation device **118** is configured to select a subgroup in the respective group of memory devices to communicate data with the MCH **101** in response to the module control signals, such that the memory module can include more ranks than what is supported by the MCH **101**. Further, each isolation devices **118** is configured to isolate unselected subgroup(s) of memory devices from the MCH **101** during write operations, so that the MCH sees a load on each data

line that is less than a load associated with the respective group of memory devices. In one embodiment, the MCH sees only a load associated with one memory device on each data/strobe signal line during write operations.

In one embodiment, the isolation devices **118** are distributed across the memory module **110** or the module board **119** in positions corresponding to the respective groups of memory devices. For example, isolation device ID-1 is disposed in a first position corresponding to the first group of memory devices M_{11} , M_{12} , M_{13} , and M_{14} , and isolation device ID- i is disposed in an i^{th} position separate from the first position and corresponding to the i^{th} group of memory devices M_{i1} , M_{i2} , M_{i3} , and M_{i4} . In one embodiment, the first position is between the first group of memory devices and an edge **201** of the module board **119** where connections (not shown) to the data/strobe signal lines **130** are placed, and i^{th} position is between the i^{th} group of memory devices and the edge **201** of the module board **119**. In one embodiment, the isolation devices **118** are distributed along the edge **201** of the memory module **110**. In one embodiment, each isolation device **118** is a separate integrated circuit device packaged either by itself or together with at least some of the respective group of memory devices. In one embodiment, the module data/strobe signal lines **210**, the module C/A signal lines **220**, and the module control signal lines **230** include signal traces formed on and/or in the module board **119**.

As an option, memory module **110** may further include a serial-presence detect (SPD) device **240**, which may include electrically erasable programmable read-only memory (EEPROM) for storing data that characterize various attributes of the memory module **110**. Examples of such data include a number of row addresses, a number of column addresses, a data width of the memory devices, a number of ranks on the memory module **110**, a memory density per rank, a number of memory device on the memory module **110**, and a memory density per memory device, etc. A basic input/output system (BIOS) of system **100** can be informed of these attributes of the memory module **110** by reading from the SPD **240** and can use such data to configure the MCH **101** properly for maximum reliability and performance.

In certain embodiments, the SPD **240** and/or the control circuit **116** store module configuration information, such as: memory space translation code, memory address mapping function code, input and output signals timing control information for the control circuit **116**, input and output signals electrical and logical level control information for the control circuit **116**, etc. In certain embodiments, the SPD **240** contains a system view of the module **110** which can be different from an actual physical construction of the module **110**. For example, the SPD **240** stores at least one memory operation parameter that is different from a corresponding memory operation parameter in a system memory controller setting. The SPD **240** may also store at least on data buffer operation parameter that is different from a corresponding parameter in the system memory controller setting.

Thus, in certain embodiment, in the memory module **110**, C/A signals representing a memory command are received and buffered by the module control circuit **116**, so that the MCH sees only the module control circuit **116** as far as the C/A signals are concerned. Write data and strobe signals from the controller are received and buffered by the isolation devices **118** before being transmitted to the memory devices **112** by the isolation devices **118**. On the other hand, read data and strobe signals from the memory devices are received and buffered by the isolation devices before being transmitted to the MCH via the system data/strobe signal lines **130**. Thus, MCH **101** does not directly operate or

control the memory devices **112**. As far as data/strobe signals are concerned, the MCH **101** mainly sees the isolation devices **118**, and the system **100** depends on the isolation devices **118** to properly time the transmission of the read data and strobe signals to the MCH **101**.

In certain embodiments, the memory module **110** is a dual in-line memory module (DIMM) and the memory devices are double data rate (DDR) dynamic random access memory devices (DRAM). In certain embodiments, the control circuit **116** includes a DDR register, and logic for memory space translation between a system memory domain and a module level physical memory domain. Such translation may produce address mapping, proper interface timing for the control signals to the module level physical memory domain, and a proper interface electrical and logical level for the control signals to the module level physical memory domain.

As shown in FIG. 2C, in certain embodiments, the control circuit **116** transmits registered C/A and clock signals to the memory devices **112**, and transmits module control signals and a registered clock signal (or module clock signal) to the isolation devices **118**, in a fly-by configuration. As the speed of memory operations increase, issues can arise with respect to signal alignment for input, output delay variation due process, voltage and temperature (PVT) variations, synchronization with system memory controller interface, and phase drift accumulation during operation, etc. Electrical interface calibration drift during operation due to charge build up and timing interface calibration drift during operation due to environment change can also create issues.

For example, load reduction mechanism in the isolation devices **118** would provide a single data bus interface to the respective set of memory devices, which is hidden from the system memory controller **101**. Thus, a long sequence of interface timing training may be required due to limited controllability of the system memory controller **101** over the interface between the memory devices **112** and the associated isolation devices **118**. Furthermore, interface signal alignment-drift after the initial training would not be easily detected by the system memory controller **101**, which may cause silent system failure.

Moreover, clock skew amongst the memory devices **112** and the associated isolation devices **118** due to the distributed architecture of the memory module **110** can cause synchronization issues. As the speed of memory operation increase, data period can become very close to the signal propagation delay time. Thus, such issues cannot simply be addressed by pipelining the data paths, as variation of the signal propagation time through I/Os becomes a very significant portion of a data period.

To address at least some of the above issues, in certain embodiments, as shown in FIG. 2D, the control circuit **116** transmits registered C/A signals to the memory devices **112**, and transmits the module control signals and the module clock signal to the data buffers **118**, in a fly-by arrangement. The memory devices **112** do not receive the module clock signal from the control circuit **116**. Instead, each data buffer **118** regenerates the clock that is used by the respective set of memory devices **112**. Each Data buffer **118** is thus responsible for providing a correct data timing interface between the respective set of memory devices **112** and the system memory controller **101**. Each data buffer **118** is also responsible for providing the correct control signal timing between the control circuit **116** and the respective set of memory devices **112**.

Thus, the memory module **110** in FIG. 2D allows a locally synchronized operation for each respective set of memory

devices **112**, which can correspond to a nibble or a byte of a DDR data bus between the memory module **110** and the system memory controller **101**. Also, signal interface between each data buffer **118** and the respective set of memory devices **112** can be synchronized. In one embodiment, each data buffer **118** has a set of configurable operations, including, for example: programmable phase relationship between the clock it receives and the clock it regenerates, programmable phase adjustment for the data and data-strobe signals coupled to the memory devices **112**, programmable phase adjustment for the data and data-strobe signals coupled to the system memory controller **101**, programmable phase adjustment related to at least one control signal that is coupled to the control circuit **116**. The locally synchronized operation also makes it easier for each data buffer **118** to perform self-testing of the associated set of memory devices **112**, independent of the self-testing of other sets of memory devices performed by the other data buffers, as disclosed in commonly-owned U.S. Pat. No. 8,001,434, entitled "Memory Board with Self-Testing Capability," which is incorporated herein by reference in its entirety.

In certain embodiments, operations of the isolation devices **118** are controlled by the module control signals from the module control circuit **116**, which generates the module control signals according to the C/A signals received from the MCH. Thus, the module control signals need to be properly received by the isolation devices **118** to insure their proper operation. In one embodiment, the module control signals are transmitted together with the module clock signal CK, which is also generated by the module control circuit **116** based on the system clock signal MCK. The isolation circuits **118** buffers the module clock signal, which is used to time the sampling of the module control signals. Since the isolation devices **118** are distributed across the memory module, the module control signal lines **230** can stretch across the memory module **110**, over a distance of several centimeters. As the module control signals travel over such a distance, they can become misaligned with the module clock signal, resulting in metastability in the received module control signals. Therefore, in one embodiment, the isolation circuits **118** includes metastability detection circuits to detect metastability condition in the module control signals and signal adjustment circuits to adjust the module control signals and/or the module clock signal to mitigate any metastability condition in the module control signals, as explained in further detail below.

Because the isolation devices **118** are distributed across the memory module **110**, during high speed operations, it may take more than one clock cycle time of the system clock MCK for the module control signals to travel along the module control signals lines **230** from the module control device **116** to the farthest positioned isolation devices **118**, such as isolation device ID-1 and isolation device ID-(n-1) in the exemplary configuration shown in FIG. 2. In other words, a same set of module control signals may reach different isolation devices **118** at different times across more than one clock cycle of the system clock. For example, when the clock frequency of the system clock is higher than 800 MHz, the clock cycle time is less than about 1.2 ns. With a signal travel speed of about 70 ps per centimeter of signal line, a module control signal would travel about 15 cm during one clock cycle. When the clock frequency increases to 1600 MHz, a module control signal would travel less than 8 cm during one clock cycle. Thus, a module control signal line can have multiple module control signals on the line at

the same time, i.e., before one module control signal reaches an end of the signal line, another module control signal appear on the signal line.

With the isolation devices **118** receiving module control signals at different times across more than one clock cycle, the module control signals alone are not sufficient to time the transmission of read data signals to the MCH **101** from the isolation devices **118**. In one embodiment, each isolation devices includes signal alignment circuits that determine, during a write operation, a time interval between a time when one or more module control signals are received from the module control circuit **116** and a time when a write strobe or write data signal is received from the MCH **101**. This time interval is used during a subsequent read operation to time the transmission of read data to the MCH **101**, such that the read data follows a read command by a read latency value associated with the system **100**, as explained in more detail below.

More illustrative information will now be set forth regarding various optional configurations, architectures, and features with which the foregoing framework may or may not be implemented, per the desires of the user. It should be strongly noted that the following information is set forth for illustrative purposes and should not be construed as limiting in any manner. Any of the following features may be optionally incorporated with or without the exclusion of other features described.

In one embodiment, as shown in FIG. 3, each group of signal lines **130** include a set of n data (DQ) signal lines **322** each for transmitting one of a set of data signals $DQ_0, DQ_1, \dots, DQ_{n-1}$, and at least one strobe (DQS) signal line **324** for transmitting at least one strobe signal DQS. Each set of module data/strobe lines Y include a set of n module data signal lines Y_0, Y_1, \dots, Y_{n-1} and at least one module strobe signal line Y_{DQS} . When the subsets of memory devices are coupled to the associated isolation device **118** via respective subsets of memory devices, each set of module data/strobe lines Y may include multiple subsets of module data/strobe lines, such as the subsets of module data/strobe lines YA and YB shown in FIG. 2B. Each subset of module data/strobe lines YA include a set of n first module data lines YA_0, YA_1, \dots, YA_n and at least one first module strobe signal line YA_{DQS} ; and each subset of module data/strobe lines YB include a set of n second module data lines YB_0, YB_1, \dots, YB_n and at least one second module strobe signal line YB_{DQS} .

Each isolation device **118** includes a set of DQ routing circuits **320** coupled on one side to respective ones of the set of n DQ signal lines **322**, and on another side to respective ones of the respective set of n module data lines, or respective ones of the respective subsets of module data lines, such as the first module data lines YA_0, YA_1, \dots, YA_n and the second module data lines YB_0, YB_1, \dots, YB_n . Each isolation device **118** further includes an ID control circuit **310** coupled on one side to the at least one DQS signal line **324**, on another side to the one or more module strobe signal lines Y_{DQS} , or the first module strobe signal line YA_{DQS} and second module strobe signal line YB_{DQS} . The ID control circuit **310** also receives the module clock signal CK and the module control signals via the module control signal lines **230**, and outputs ID control signals **330** to the DQ routing circuits **320**, including, for example, one or more enable signals ENA and/or ENB, and some or all of the other received, decoded, and/or otherwise processed module control signals, a delay signal DS, a read DQS signal RDQS, a write DQS signal WDQS, and a buffer clock signal CK0. Each DQ routing circuit **320** is configured to enable data

11

communication between the respective DQ signal line 322 with a selected subgroup of one or more memory devices in response to the module control signals, as explained in more detail below.

In certain embodiments, the ID control circuit 310 also provides a delay signal DS, which is used by the DQ routing circuits 320 to align read data output by the isolation device 118 with read data output by the other isolation devices 118, as explained in further detail below. In certain embodiments, the ID control circuit 310 regenerates a clock signal from the module clock signal CK, which can have a programmable delay from the module clock signal. The regenerated clock signal is used as the clock signal CK0 and a clock signal CKM that is provided to the corresponding set of memory devices, as explained in more detail below.

The memory devices 112 are coupled to the isolation devices 118 via a same set of module data/strobe signal lines or different subsets of module data/strobe signal lines. For example, as shown in FIG. 4A, memory devices M_{11} , M_{12} , M_{13} , and M_{14} in the first group of memory devices can be coupled to the isolation device ID-1 via a same set of module data lines $Y-1_0$, $Y-1_1$, . . . , $Y-1_{n-1}$ and module strobe line $Y-1_{DQS}$. In such embodiment, a subgroup in the group of memory devices can be selected by the isolation devices to communicated data with the MCH based on the phases of the data/strobe signals, which can be different with respect to different subgroups of memory devices.

Alternatively, as shown in FIG. 4B, memory devices M_{11} and M_{13} , which form a subgroup in the first group of memory devices, are coupled to the isolation device ID-1 via the module data lines $YA-1_0$, $YA-1_1$, . . . , $YA-1_n$, and module strobe line $YA-1_{DQS}$ and memory devices M_{12} and M_{14} , which form another subgroup in the first group of memory devices, are coupled to the isolation device ID-1 via the module data lines $YB-1_0$, $YB-1_1$, . . . , $YB-1_n$, and module strobe line $YB-1_{DQS}$. Memory devices coupled to the same isolation devices can be disposed on a same side or different sides of the memory board 119. Memory devices coupled to the same isolation devices may be placed side by side, on opposite sides of the module boards 119, or stacked over each other, and/or over the associated isolation device.

Multiple memory devices having a data width that is less than a data width of the isolation devices 118 may be used in place of one of the memory devices 112, which has the same data width as that of the isolation devices. For example, as shown in FIG. 5A, two memory devices M_{11-1} and M_{11-2} may be used in place of the memory device M_{11} . Each of the two memory devices M_{11-1} and M_{11-2} has a data width of 4, and together they act like a memory device M_{11} of a data width of 8. Thus, memory device M_{11-1} is coupled to the isolation device ID-1 via module data lines $YA-1_0$, . . . , $YA-1_3$ and module strobe line $YA-1_{DQS-1}$ while memory circuit M_{11-2} is coupled to the isolation device ID-1 via module data lines $YA-1_4$, $YA-1_7$ and module strobe line $YA-1_{DQS-2}$.

In another embodiment, as shown in FIG. 5B, four memory devices M_{11-1} to M_{11-4} may be used as the memory device M_{11} . Each of the four memory devices M_{11-1} to M_{11-4} has a data width of 4, and together they act like a memory device M_{11} of a data width of 16. Thus, memory device M_{11-1} is coupled to the isolation device ID-1 via module data lines $YA-1_0$, . . . , $YA-1_3$ and module strobe line $YA-1_{DQS-1}$ while memory device M_{11-2} is coupled to the isolation device ID-1 via module data lines $YA-1_4$, . . . , $YA-1_7$ and module strobe line $YA-1_{DQS-2}$, and so on.

FIG. 6 illustrates the ID control circuit 310 in an isolation device 118. As shown, the ID control circuit 310 includes a

12

clock buffer 610 to receive the module clock signal CK from the module control device 116, and to output a module clock signal CK0. The ID control circuit 310 further includes a strobe routing circuit 620 that are coupled on one side to the corresponding system DQS signal line 324 and on another side to the corresponding module DQS signal lines YA_{DQS} and YB_{DQS} . The ID control circuit 310 further includes a receiver circuit 630 with respect to each of at least some of the module control signals (MCS) to receive a respective one of the module control signals. The ID control circuit 310 further includes a command processing circuit 640 that provides the received, decoded, and/or otherwise processed module control signals 330 to the DQ routing circuits 320 and the strobe routing circuit 620 either directly or after further processing, if needed. The received/decoded/processed module control signals may include, for example, one or more enable signals ENA and/or ENB that are used by the DQ routing circuits 320 and the strobe routing circuit 620 to selectively enabling data communication between the MCH 101 and one of the subgroups in the respective group of memory devices, with which the isolation device is associated.

The strobe routing circuit 620 also buffers strobe signals received from either the MCH 101 or the memory devices 112, and output either a write strobe WDQS or read strobe RDQS to the DQ routing circuits 320. In one embodiment, the ID control circuit 310 further includes a delay control circuit 650 that receives one of the module control signals and either a data signal or a strobe signal and determines a delay amount to be used by the DQ routing circuit 320 and the strobe routing circuit 620. The delay amount is provided to the DQ routing circuit 320 and the strobe routing circuit in a delay signal DS.

In a receiver circuit 630, the respective MCS is received in accordance with the module clock signal CK0. In one embodiment, receiver circuit 630 samples the respective MCS using rising (or falling) edges of the module clock CK0. Since the isolation devices 118 are distributed across the memory module 110 at positions corresponding to the respective groups of memory devices, the module control signal lines 230 that carry the MCS to the isolation devices can stretch over a distance of more than 10 centimeters, as shown in FIG. 7. As the MCS and CK0 travel along their respective module control signal lines 710 and 720, they can become misaligned with each other when they reach the input pins 730 of an isolation device 118.

For example, a module control signal, like the MCS 810 shown in FIG. 8, can be perfectly aligned with the module clock signal CK, with a rising edge 801 of the module clock signal CK being at a center of a data eye 802, when the MCS signal and the clock signal leave the module control circuit 116. When the module control signal and the module clock signal reach an isolation device, however, their alignment can become shifted like the MCS 820 with respect to the CK signal, i.e., the rising edge 801 of the clock signal is near a left edge of a data eye of the MCS 820, barely providing enough set up time for proper sampling of the module control signal. Or, the module control signal, like the MCS 830, can be shifted with respect to the module clock signal such that a rising edge 801 of the clock signal is near a right edge of a data eye of the MCS, barely providing enough hold time for proper sampling of the module control signal. Or, ever worse, the module control signal, like the MCS 840, can be so shifted with respect to the module clock signal such that a rising edge 801 of the clock signal falls in the glitches 803 at the edge of a data eye of the MCS, meaning that the sampled results could be metastable.

13

In one embodiment, as shown in FIG. 9, a receiver circuit 630 includes a metastability detection circuit (MDC) 910 to determine a metastability condition in a corresponding module control signal MCS0. In one embodiment, the MDC 910 generates at least one delayed version of the module clock signal CK and at least one delayed version of the corresponding MCS0. The MDC 910 also generates one or more metastability indicators and outputs the one or more metastability indicators via lines 912 and/or 914.

The receiver circuit 630 further includes a signal selection circuit 920 that receives the module clock CK and the at least one delayed version of the module clock via signal lines 916. The signal selection circuit 920 also receives the corresponding MCS and the at least one delayed version of the corresponding MCS via signal lines 918. The signal selection circuit 920 selects a clock signal CK from among the module clock CK and the at least one delayed version of the module clock based on one or more of the metastability indicators. The signal selection circuit 920 may also select an MCS signal MCS_i from among the corresponding MCS and the at least one delayed version of the corresponding MCS based on at least one other metastability indicator.

The receiver circuit 630 further includes a sampler or register circuit 930 that samples the selected module control signal MCS_i according to the selected clock signal CK, and outputs the sampled signal as the received module control signal, which is provided to the command processing circuit 640 for further processing (if needed) before being provided to the DQ routing circuits 320 and DQS routing circuit 620.

FIG. 10A illustrates an MDC 910 according to one embodiment. As shown, the MDC 910 includes a delay circuit 1012 that generates a delayed version MCS1 of the corresponding MCS0 by adding a predetermined amount of delay (e.g., 10 ps) to MCS0. MDC 910 also includes a delay circuit 1016 that generates a delayed version CK1 of the clock signal CK0 by adding a predetermined amount of delay to CK0. In one embodiment, CK1 is delayed from CK0 by about 1/10th of a clock cycle, e.g., 50-70 ps for an operating frequency of about 1600 MHz. The MDC 910 further includes a sampler circuit 1042 that samples MCS1 according to CK0 and outputs a sampled result A, a sampler circuit 1044 that samples MCS0 according to CK0 and outputs a sampled result B, and a sampler circuit 1046 that samples MCS0 according to CK1 and outputs a sampled result C. The MDC 910 further includes a logic circuit (e.g., a majority decision circuit) that generates metastability indicators Z1 and Z2 based on the sampled results A, B, and C.

In one embodiment, Z1 is the result of a logic operation (e.g., an XNOR operation) on the sampled result, e.g., $Z1 = \overline{A \oplus B}$, and Z2 is the result of another logic operation on the sampled results, e.g., $Z2 = \overline{B \oplus C}$. Thus, as shown in FIG. 10B and Table 1 below, when a metastability condition of insufficient hold time occurs, i.e., a rising clock edge 1061 of CK0 is close to the right side of a data eye where glitches at the edges of the data eyes can make C unpredictable, A and B can be in agreement (i.e., Z1 is true) while B and C are likely not in agreement (i.e., Z2 is false). FIG. 10C illustrates a metastability condition when there is insufficient set-up time. As shown in FIG. 10C and Table 1 below, a rising clock edge 1061 of CK0 is close to the left side of a data eye where glitches at the edges of the data eyes can make A unpredictable. Thus, A and B can be in disagreement so Z1 is false while B and C can be in agreement so Z2 is true. Not shown in the figures is the situation that all A, B, and C are in agreement, meaning that both the rising clock edge 1061 of CK0 and the rising clock edge 1062 of CK1 are near the

14

middle of an MCS0 data eye so there is no metastability issues and both Z1 and Z2 are true, as shown in Table 1.

FIG. 10D illustrates a signal selection circuit 920 according to an embodiment. As shown, in one embodiment, the signal selection circuit 920 includes a first multiplexor 1071 that selects between CK0 and CK1 based on the metastability indicator Z1, and a second multiplexor 1072 that selects between MCS0 and MCS1 based on the metastability indicator Z2. Thus, as shown in Table 1, where a metastability condition of insufficient hold time occurs, Z1=1 and Z2=0, and MCS1 is output from multiplexor 1071 while CK0 is output from multiplexor 1072. Sampler 930 thus samples MCS1 according to the rising edges of CK0. Thus, more hold time is provided to mitigate the metastability condition since MCS1 is shifted from MCS0 toward the right.

On the other hand, where a metastability condition of insufficient set-up time occurs, Z1=0 and Z2=1, and CK1 is output from multiplexor 1071 while MCS0 is output from multiplexor 1072. Sampler 930 thus samples MCS0 according to the rising edges of CK1. Since CK1 is shifted from CK0 toward the right, more set-up time is provided to mitigate the metastability condition.

In the case when no metastability is detected, Z1=1 and Z2=1, and CK0 is output from multiplexor 1071 while MCS0 is output from multiplexor 1072. So, the unshifted module control signal is sampled according to the unshifted module clock signal.

TABLE 1

Metastability Detection and Signal Selection								
Sampler Output			MS Indicators		MS Condition	Signal Selection		
A	B	C	Z1	Z2		CK	MCS	
D1	D1	D2	1	0	insufficient hold time	CK0	MCS1	
D1	D2	D2	0	1	insufficient set-up time	CK1	MCS0	
D1	D1	D1	1	1	no metastability	CK0	MCS0	

FIGS. 10A-10D illustrate a relatively simple implementation of the metastability detection circuit (MDC) 910 where only three different sample points are provided to detect metastability condition in the module control signal. In general, the MDC 910 may generate more delayed versions of the module clock signal CK0 and/or the corresponding module control signal MCS0, and may include more sampler circuits to sample any additional delayed versions of the module control signal according to either the module clock signal or one of the delayed versions of the module clock signal. For example, as shown in FIG. 11A, the MDC 910 can include a plurality of delay circuits 1102 that generate m delayed versions of MCS0, e.g., MCS1, MCS2, . . . MCSm, and m delayed versions of CK0, e.g., CK1, CK2, . . . CKm. The MDC 910 can include sampler circuits 1104 that sample MCS0 according to CK0, CK1, . . . CKm, respectively, and sampler circuits 1104 that sample MCS0, MCS1, MCS2, . . . MCSm according to CK0, respectively. The outputs of the samplers 1104 are provided to a logic circuit 1120, which determines a metastability condition in MCK0 based on the sampler outputs using, for example, a majority decision logic. The logic circuit 1120 outputs a first metastability indicator on line(s) 912 and a second metastability indicator on line(s) 914.

FIG. 11B illustrates a signal selection circuit 920 according to an embodiment. As shown, in one embodiment, the

15

signal selection circuit **920** includes a first multiplexor **1171** that selects between CK0, CK1, . . . , CKm based on the metastability indicator provided on line(s) **912**, and a second multiplexor **1172** that selects between MCS0, MCS1, . . . , MCSm based on the metastability indicator provided on line(s) **914**, such that the rising edges of the selected clock signal, e.g., Cki, are close to the middle of the respective data eyes in the selected module control signal, e.g., MCSi. The selected signals MCSi and Cki are provided to the sampler **930**, which samples MCSi according to the rising edges of CKi.

As stated above, in certain embodiments, since the isolation devices **118** are in the data paths between the MCH **101** and the respective groups of memory devices **112**, the MCH **101** does not have direct control of the memory devices **112**. Thus, conventional read/write leveling techniques are not sufficient for managing read/write data timing. In one embodiment, the isolation devices **118** includes signal alignment mechanism to time the transmission of read data signals based on timing information derived from a prior write operation, as discussed further below.

FIG. **12A** is a timing diagram for a write operation according to one embodiment. As shown, after a write command W/C associated with the write operation is received by the module control circuit **116** at time **t1**, the module control circuit **116** outputs one or more enable signals EN at time **t2** in response to the write commands. The one or more enable signals are received by an isolation device **118** at time **t3**, which afterwards receives one or more strobe signal DQS from the MCH **101** at time **t4**. Note that the same enable signal may be received by another isolation device **118** at time **t3'**, which can be in a different cycle of the system clock MCK from the cycle which **t3** is in. The time interval between **t4** and **t1** is consistent with a write latency W.L. associated with the system **100**, and is controllable by the MCH **101** and knowable to the isolation device **118**. The time interval between **t4** and **t3**, referred to hereafter as an enable-to-write data delay EWD, can be determined by the isolation device **118** since both these signals are received by the isolation device. Based on such determination, the isolation device **118** can have knowledge of the time interval between **t3** and **t1**, referred to hereafter as a command-to-enable delay CED, which can be used by the isolation device **118** to properly time transmission of read data to the MCH, as explained further below.

FIG. **12B** is a timing diagram for a read operation according to one embodiment. As shown, after a read command R/C associated with the read operation is received by the module control circuit **116** at time **t5**, the module control circuit **116** outputs one or more enable signals EN at time **t6** in response to the read commands. The one or more enable signals are received by an isolation device **118** at time **t7**, which afterwards receives at time **t8** read data signals (not shown) and one or more strobe signal DQS from the respective group of memory devices. Note that the same enable signal may be received by another isolation device **118** at time **t3'**, which can be in a different cycle of the system clock MCK from the cycle which **t3** is in. Thus, the enable signals alone cannot be used to time the transmission of the read signals by the isolation devices **118**.

With knowledge of the time interval between **t7** and **t5**, which should be about the same as the time interval between **t3** and **t1**, i.e., the command-to-enable delay CED, in certain embodiments, the isolation device can add a proper amount of delay to the read data signals and the one or more DQS signal such that the read data signals and the one or more DQS signal are transmitted at time **t9** by the isolation device

16

to the MCH **101** via the respective group of data/strobe signal lines **130**, with the time interval between **t9** and **t5** being consistent with a read latency R.L. associated with the system **100**.

The time interval between **t4** and **t3**, i.e., the enable to write data delay EWD, is determined by the delay control circuit **650** in the ID control circuit **310**, as shown in FIG. **6**. According to one embodiment, as shown in FIG. **13**, the delay control circuit **650** includes a preamble detector **1310** to detect a write preamble in the DQS, a flip-flop circuit **1320** having an enable input EN receiving one of the module control signals and a clock input CK receiving the buffered module clock signal CK0, and a counter circuit **1330** having a Start input receiving the one of the module control signals, a Stop input receiving an output of the flip-flop circuit **1320**. Thus, the output of the counter circuit, i.e., the delay signal DS, would indicate a time interval from when the write preamble is detected and when the one of the module control signal is received.

FIG. **14** illustrates a DQ or DQS routing circuit **320** or **620** according to an embodiment. As shown, the DQ/DQS routing circuit **320/620** includes a DQ/DQS pin **1401** that is coupled to the corresponding DQ/DQS signal line **322/324**, a set of one or more DQS pins **1402** that is coupled to a corresponding module DQ/DQS line(s) Y/Y_{DQS}, or YA/YA_{DQS} and YB/YB_{DQS}. The DQ/DQS routing circuit **320/620** further includes a write strobe buffer **1410** that buffers write data/strobe, and a write data/strobe receiver **1420** that samples the write data/strobe. The DQ/DQS routing circuit **320/620** further includes a plurality of write paths **1430** that are selectable or can be selectively enabled by one or more of the module control signals, such as the enable signals ENA and ENB.

The DQS routing circuit further includes a plurality of read paths **1450** that are selectable by the one or more of the module control signals. Output from the selected read path is delayed in a delay circuit **1460** by an amount controlled by the delay signal DS, and sampled by a sampler circuit **1470**. The sampled read data/strobe is transmitted by transmitter **1480** onto the corresponding data/strobe signal line **322/324** via the DQ/DQS pin **1401**.

FIG. **15** illustrates a DQS routing circuit **620** according to an embodiment. As shown, the DQS routing circuit **620** includes a first DQS pin **1501** that is coupled to a corresponding DQS signal line **324**, a second DQS pin **1502A** that is coupled to a corresponding module DQS line YA_{DQS}, a third DQS pin **1502B** that is coupled to a corresponding module DQS line YB_{DQS}. The DQS routing circuit **620** further includes a first write strobe path coupled between the first DQS pin **1501** and the second DQS pin **1502A** and a second write strobe path coupled between the first DQS pin **1501** and the third DQS pin **1502B**. The first write strobe path includes a write strobe buffer **1510** that buffers a write strobe, a write strobe receiver **1520** that samples the write strobe according to the buffered module signal CK0. The sampled write strobe is provided to the DQ routing circuits **320** as the write strobe WDQS. The first write strobe path further includes a first write strobe transmitter **1530A** that transmits the write strobe to one or more memory devices **112** coupled to the module strobe line YA_{DQS}. The second write strobe path includes the write strobe buffer **1510**, the write strobe receiver **1520**, and a second write strobe transmitter **1530B** that transmits the write strobe to one or more memory devices **112** coupled to the module strobe line YB_{DQS}. The first and second write strobe transmitters, **1530A** and **1530B**, are controlled by two enable signals, ENA and ENB, respectively, such that the first write strobe

path and the second write strobe path can be selectively enabled/disabled by the enable signals, ENA and ENB.

The DQS routing circuit further includes a read strobe path coupled between the first DQS pin 1501 and a selected one of the second and third DQS pins 1502A and 1502B. In the read strobe path, a select circuit 1550 (e.g., a multiplexor) selects either a read strobe signal received via DQS pin 1502A or a read strobe signal received via DQS pin 1502B based on one or both of the enable signals ENA or ENB. The selected read strobe signal is delayed in a delay circuit 1560 by an amount controlled by the delay signal DS, and sampled by a sampler circuit 1570 according to the buffered module clock signal CK0. The sampled read strobe is provided to the DQ routing circuits 320 as the read strobe RDQS and is transmitted by transmitter 1580 onto the corresponding strobe signal line 324 via the first DQS pin 1501.

FIG. 16 illustrates a DQ routing circuit 320 according to an embodiment. As shown, the DQ routing circuit 320 includes a first DQ pin 1601 that is coupled to a corresponding DQ signal line 130, a second DQ pin 1602A that is coupled to a corresponding module DQ line YA_{DQ} , a third DQ pin 1602B that is coupled to a corresponding module DQ line YB_{DQ} . The DQ routing circuit 320 further includes a first write data path coupled between the first DQ pin 1601 and the second DQ pin 1602A and a second write data path coupled between the first DQ pin 1601 and the third DQ pin 1602B. The first write data path includes a write data buffer 1610, a write data receiver 1620 that samples write data according to the write strobe WDQS from the DQS routing circuit 620, and a first write data transmitter 1630A that transmits the write data to one or more memory devices 112 coupled to the module data line YA_{DQ} . The second write data path includes the write data buffer 1610, the write data receiver 1620, and a second write data transmitter 1630B that transmits the write data to one or more memory devices 112 coupled to the module data line YB_{DQ} . The first and second write data transmitters, 1530A and 1530B, are controlled by two enable signals, ENA and ENB, respectively. Thus, the first write data path and the second write data path can be selectively enabled/disabled by the enable signals, ENA and ENB.

The DQ routing circuit further includes a read data path coupled between the first DQ pin 1601 and a selected one of the second and third DQ pins 1602A and 1602B. In the read data path, a select circuit 1650 (e.g., a multiplexor) selects either a read data signal received via DQ pin 1602A or a read data signal received via DQ pin 1602B based on one or both of the enable signals ENA or ENB. The selected read data signal is delayed in a delay circuit 1660 by an amount controlled by the delay signal DS. The delayed read data signal is then sampled by a receiver circuit 1670 according to the read strobe RDQS from the DQS routing circuit 620, and transmitted by transmitter 1680 onto the corresponding data signal line 130 via the first DQ pin 1601.

FIG. 17 illustrate a delay circuit 1560 or 1660 according to an embodiment. As shown, the delay circuit 1560 or 1660 includes a plurality of delay stages, such as delay stages 1710, 1720, and 1730, each delaying a read data or read strobe signal from the select circuit 1550/1650 by a predetermined amount. The delay circuit 1560 or 1660 further includes a select circuit 1740 (e.g., a multiplexor) that selects from among the read data or read strobe signal and the outputs from the delay stages according to the delay signal DS. The output of the select circuit 1740, is provided to the sampler circuit 1570 or 1670, either directly or after being buffered by a buffer circuit 1750.

Thus, as shown in FIG. 18, in one embodiment, a memory module 110 operates in the memory system 100 according to a method 1800. In the method, during a write operation, one or more module control signals are received by an isolation device 118 from a module control circuit or module controller 116 (1810). The module controller 116 generates the one or more module control signals in response to C/A signals representing a write command from the MCH 101. The one or more module control signals are used to control the isolation device 118. For example, the one or more module control signals may include one or more first enable signals to enable a write path to allow write data be communicated to a selected subgroup of memory devices among the group of memory devices coupled to the isolation device 118. After a time interval from receiving the one or more first enable signals, write data DQ and write strobe DQS are received by the isolation device 118 from the MCH 101 (1820). In one embodiment, upon receiving the one or more first enable signal, a counter is started, which is stopped when the write data DQ or write strobe DQS is received. Thus, a time interval EWD between receiving the one or more first enable signals and receiving the write strobe signal DQS is recorded.

Since the time interval between the arrival of the command signals from the MCH 101 and the arrival of the write data/strobe signal DQ/DQS from the MCH 101 is a set according to a write latency parameter associated with the system 100, the time interval EWD can be used to ascertain a time interval CED between the time when a command signal is received by the memory module 110 and the time when the one or more enable signals are received by the isolation device 118. The time interval CED can be used by the isolation device 118 to properly time the transmission of read data to the MCH 101, as described above and explained further below.

As shown in FIG. 18, a delay signal DS is generated according to the time interval EWD (1830). Concurrent to receiving the write strobe signal DQS, the isolation device 118 also receives a set of write data signals DQ (1840). The received write data signals are transmitted to the subgroup of memory devices (1850), which are selected from the group of memory devices coupled to the isolation device 118 by the one or more first enable signals.

During a read operation, another set of module control signals including, for example, one or more second enable signals, are received by the isolation device 118 from the module controller 116 (1860). The one or more second enable signals are generated by the module controller 116 in response to read command signals received from the MCH 101, and are used by the isolation device 118 to select a subgroup of memory devices from which to receive read data. Afterwards, a read strobe signal DQS and a set of read data signal DQ are received from the selected subgroup of memory devices (1870). To properly time the transmission of the DQS and DQ signals to the MCH 101, the DQS and DQ signals are adjusted (e.g., delayed) according to the delay signal DS, such that the DQS and DQ signals follow a read command by a time interval consistent with a read latency parameter associated with the system 100.

In certain embodiments, especially the embodiments shown in FIG. 2D, the delay circuits 1560 and 1660 shown in FIGS. 15 and 16 are not needed to provide alignment of the read data. As shown in FIG. 19, the ID control circuit 310 includes a clock regeneration circuit 1920 that regenerates the clock signal CK received from the control circuit 116, according to the delay signal DS. The regenerated clock signals CK0 and CKM each includes a proper amount of

19

delay as compared to the clock signal CK. The clock CK0 is provided to the strobe routing circuit 620 so that the strobe signals are properly timed to result in proper data alignment. The regenerated clock signal CKM is provided to the respective set of memory devices so that the respective data buffer 118 and the respective set of memory devices are locally synchronized.

We claim:

1. A memory module operable to communicate with a memory controller via a memory bus, the memory bus including signal lines, the signal lines including a set of control/address signal lines and a plurality of sets of data/strobe signal lines, the memory module comprising:

a module board having edge connections for coupling to respective signal lines in the memory bus;

a module control device mounted on the module board and configured to receive memory command signals for a first memory operation from the memory controller via the set of control/address signal lines and to output module command signals and module control signals in response to the memory command signals; and

memory devices mounted on the module board and configured to perform the first memory operation in response to the module command signals, the memory devices including a plurality of sets of memory devices corresponding to respective sets of the plurality of sets of data/strobe signal lines; and

a plurality of buffer circuits mounted on the module board in positions corresponding to respective sets of the plurality of sets of data/strobe signal lines, wherein each respective buffer circuit of the plurality of buffer circuits is coupled between a respective set of data/strobe signal lines and a respective set of memory devices, the each respective buffer circuit including data paths for transmitting respective data and strobe signals associated with the first memory operation and logic configured to respond to the module control signals by enabling the data paths, wherein the logic is further configured to obtain timing information based on one or more signals received by the each respective buffer circuit during a second memory operation prior to the first memory operation and to control timing of the respective data and strobe signals on the data paths in accordance with the timing information.

2. The memory module of claim 1, wherein the first memory operation is a memory read operation and the second memory operation is a memory write operation.

3. The memory module of claim 2, wherein the each respective buffer circuit includes a delay control circuit configured to determine, during the memory write operation, a time interval between receiving a first signal from the module control device and receiving a second signal from the memory controller, and wherein the timing information includes the time interval.

4. The memory module of claim 3, wherein the each respective buffer circuit is further configured to receive a module clock signal and further includes a clock regeneration circuit configured to generate a local clock signal having a programmable phase relationship with the module clock signal, wherein the each respective buffer circuit is further configured to output the local clock signal to the respective set of memory devices.

5. The memory module of claim 3, wherein each of the plurality of buffer circuits has a data width of 1 byte, and wherein each of the memory devices has a data width of 1 byte.

20

6. The memory module of claim 2, wherein the memory devices are arranged in a plurality of ranks and the respective set of memory devices include one memory device from each of the plurality of ranks, and wherein the module command signals include chip select signals that select one memory device in the respective set of memory devices to output the respective data and strobe signals.

7. The memory module of claim 3, wherein each of the plurality of buffer circuits has a data width of 1 byte, and wherein each of the memory devices has a data width of 4 bits.

8. The memory module of claim 7, wherein the memory devices are arranged in a plurality of ranks and the respective set of memory devices include two memory devices from each of the plurality of ranks, and wherein the module command signals include chip select signals that select two memory devices in the respective set of memory devices to output the respective data and strobe signals, the two memory devices being in a same rank.

9. The memory module of claim 1, wherein the each respective buffer circuit is further configured to receive a module clock signal from the module control device and further includes a receiver circuit for each of the module control signals, the receiver circuit including a metastability detection circuit configured to determine a metastability condition in the each of the module control signals with respect to the module clock signal.

10. The memory module of claim 1, wherein each of the plurality of buffer circuits has a data width of 1 byte, and wherein each of the memory devices has a data width of 1 byte.

11. The memory module of claim 10, wherein the memory devices are arranged in a plurality of ranks and the respective set of memory devices include one memory device from each of the plurality of ranks, and wherein the module command signals include chip select signals that select one memory device in the respective set of memory devices to receive or output the respective data and strobe signals.

12. The memory module of claim 1, wherein each of the plurality of buffer circuits has a data width of 1 byte, and wherein each of the memory devices has a data width of 4 bits.

13. The memory module of claim 12, wherein the memory devices are arranged in a plurality of ranks and the respective set of memory devices include two memory devices from each of the plurality of ranks, and wherein the module command signals include chip select signals that select two memory devices in the respective set of memory devices to receive or output the respective data and strobe signals, the two memory devices being in a same rank.

14. The memory module of claim 1, wherein the each respective buffer circuit is further configured to receive a module clock signal and further includes a clock regeneration circuit configured to generate a local clock signal having a programmable phase relationship with the module clock signal, wherein the each respective buffer circuit is configured to output the local clock signal to the respective set of memory devices.

15. The memory module of claim 14, wherein the data paths include a first data path for transmitting a strobe signal among the respective data and strobe signals, the first data path including a sampler that samples the strobe signal in accordance with the local clock signal.

16. The memory module of claim 15, wherein the data paths include a second data path for transmitting a first data signal among the data and strobe signals, the second data

21

path including a sampler that samples the first data signal in accordance with the sampled strobe signal.

17. The memory module of claim 14, wherein each of the plurality of buffer circuits has a data width of 1 byte, and wherein each of the memory devices has a data width of 1 byte.

18. The memory module of claim 17, wherein the memory devices are arranged in a plurality of ranks and the respective set of memory devices include one memory device from each of the plurality of ranks, and wherein the module command signals include chip select signals that select one memory device in the respective set of memory devices to output or receive the respective data and strobe signals in accordance with the local clock signal.

19. The memory module of claim 14, wherein each of the plurality of buffer circuits has a data width of 1 byte, and wherein each of the memory devices has a data width of 4 bits.

22

20. The memory module of claim 19, wherein the memory devices are arranged in a plurality of ranks and the respective set of memory devices include two memory devices from each of the plurality of ranks, and wherein the module command signals include chip select signals that select two memory devices in the respective set of memory devices to output or receive the respective data and strobe signals in accordance with the local clock signal, the two memory devices being in a same rank.

21. The memory module of claim 1, wherein the one or more signals received by the each respective buffer circuit during the second memory operation include at least one signal from the module control device.

22. The memory module of claim 1, wherein the one or more signals received by the each respective buffer circuit during the second memory operation include at least one signal from the memory controller.

* * * * *

(12) **INTER PARTES REVIEW CERTIFICATE** (3316th)

United States Patent
Bhakta et al.

(10) Number: **US 9,824,035 K1**
(45) Certificate Issued: **Nov. 13, 2023**

(54) **MEMORY MODULE WITH
TIMING-CONTROLLED DATA PATHS IN
DISTRIBUTED DATA BUFFERS**

(71) Applicants: **Jayesh R. Bhakta; Hyun Lee**

(72) Inventors: **Jayesh R. Bhakta; Hyun Lee**

(73) Assignee: **NETLIST, INC.**

Trial Number:

IPR2022-00236 filed Dec. 23, 2021

Inter Partes Review Certificate for:

Patent No.: **9,824,035**
Issued: **Nov. 21, 2017**
Appl. No.: **15/426,064**
Filed: **Feb. 7, 2017**

The results of IPR2022-00236 are reflected in this inter partes review certificate under 35 U.S.C. 318(b).

INTER PARTES REVIEW CERTIFICATE
U.S. Patent 9,824,035 K1
Trial No. IPR2022-00236
Certificate Issued Nov. 13, 2023

1

2

AS A RESULT OF THE INTER PARTES
REVIEW PROCEEDING, IT HAS BEEN
DETERMINED THAT:

Claims **2** and **6** are found patentable.

5

Claims **1**, **10-13**, **21** and **22** are cancelled.

* * * * *