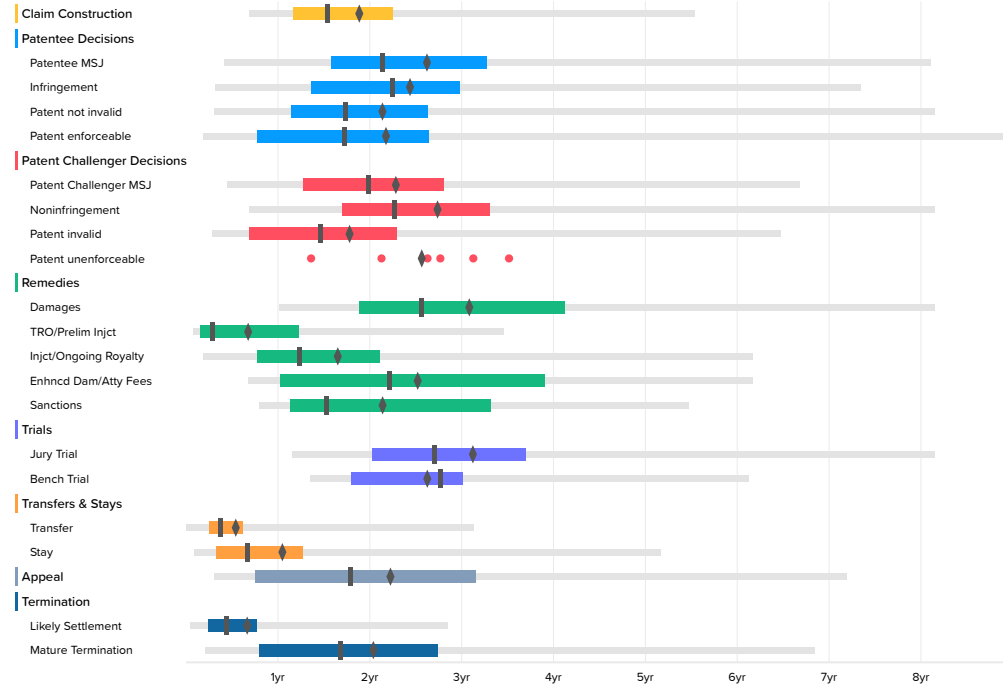


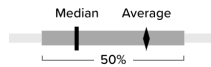
Time to Milestones

Courts: California (some districts) Case Filing Date: On or After Jan. 1st, 2008

U.S. District Courts (3525 cases)



The milestones shown in this chart are based on Docket Navigator's classification of orders matching the search criteria specified to generate the report. Each box plot shows the time between the filing of the complaint and the named milestone. The left and right ends of the box labeled 50% are respectively the first- and third-quartiles. The lighter line shows events between the 2nd and 98th percentile. The remaining points are outliers, represent at most 4% of the data, and are not shown, however, the true minimum and maximum are included in the accompanying table and the mean includes outliers. Fewer than ten events occurring in a category are shown as dots instead of a box plot.



U.S. District Courts

	Occurrences	Minimum	2nd Percentile	First Quartile	Median	Third Quartile	98th Percentile	Maximum	Average
Claim Construction	407	-3.4	8.2	13.9	18.4	26.9	66.4	124.9	22.8
Patentee MSJ	118		5.0	19.0	25.7	39.2	97.0	107.4	31.7
Infringement	102	1.7	3.9	16.3	26.9	35.7	88.0	116.1	29.5
Patent not invalid	211	1.7	3.6	13.7	20.7	31.5	97.6	124.3	25.9
Patent enforceable	42	1.7	2.2	9.3	20.7	31.6	107.4	107.4	26.3
Patent Challenger MSJ	285		5.3	15.2	23.8	33.6	80.0	124.3	27.6
Noninfringement	224	1.1	8.2	20.3	27.2	39.6	97.6	126.2	33.0
Patent invalid	326	1.0	3.4	8.3	17.5	27.5	77.5	97.6	21.6
Patent unenforceable	6	16.3			32.3			42.1	31.0
Damages	63	10.6	12.2	22.5	30.7	49.4	97.6	128.1	37.2
TRO/Prelim Injct	14	0.7	1.0	1.9	3.4	14.6	41.3	41.3	8.4
Injct/Ongoing Royalty	85	1.0	2.2	9.3	14.8	25.2	73.9	80.4	20.0
Enhncd Dam/Atty Fees	52	4.9	8.1	12.3	26.5	46.8	73.9	74.2	30.5
Sanctions	24	9.0	9.6	13.5	18.3	39.8	65.5	65.5	25.9
Jury Trial	67	12.6	13.8	24.3	32.4	44.3	97.6	116.1	37.7
Bench Trial	11	13.6	16.2	21.5	33.1	36.1	73.4	73.4	31.7
Transfer	86	0.0		3.0	4.5	7.4	37.5	60.8	6.7
Stay	807		1.0	3.9	8.0	15.2	62.0	154.1	12.8
Appeal	414	-19.7	3.6	9.0	21.4	37.8	86.1	129.3	26.9
Likely Settlement	2010	0.0	0.6	2.8	5.3	9.2	34.1	93.0	8.2
Mature Termination	1321	1.0	2.5	9.6	20.1	32.8	82.0	154.1	24.7