

2.3: Spherical Mirrors

Learning Objectives

By the end of this section, you will be able to:

- Describe image formation by spherical mirrors.
- Use ray diagrams and the mirror equation to calculate the properties of an image in a spherical mirror.

The image in a plane mirror has the same size as the object, is upright, and is the same distance behind the mirror as the object is in front of the mirror. A curved mirror, on the other hand, can form images that may be larger or smaller than the object and may form either in front of the mirror or behind it. In general, any curved surface will form an image, although some images may be so distorted as to be unrecognizable (think of fun house mirrors). Because curved mirrors can create such a rich variety of images, they are used in many optical devices that find many uses. We will concentrate on spherical mirrors for the most part, because they are easier to manufacture than mirrors such as parabolic mirrors and so are more common.

Curved Mirrors

We can define two general types of spherical mirrors. If the reflecting surface is the outer side of the sphere, the mirror is called a **convex mirror**. If the inside surface is the reflecting surface, it is called a **concave mirror**.

Symmetry is one of the major hallmarks of many optical devices, including mirrors and lenses. The symmetry axis of such optical elements is often called the principal axis or optical axis. For a spherical mirror, the optical axis passes through the mirror's center of curvature and the mirror's vertex, as shown in Figure 2.3.1.

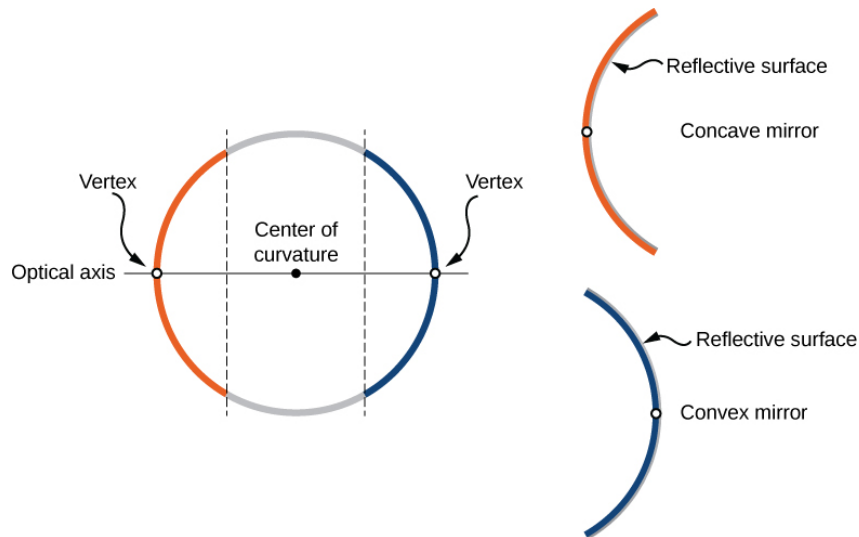


Figure 2.3.1. A spherical mirror is formed by cutting out a piece of a sphere and silvering either the inside or outside surface. A concave mirror has silvering on the interior surface (think “cave”), and a convex mirror has silvering on the exterior surface.

Consider rays that are parallel to the optical axis of a parabolic mirror, as shown in Figure 2.3.2a. Following the law of reflection, these rays are reflected so that they converge at a point, called the **focal point**. Figure 2.3.2b shows a spherical mirror that is large compared with its radius of curvature. For this mirror, the reflected rays do not cross at the same point, so the mirror does not have a well-defined focal point. This is called **spherical aberration** and results in a blurred image of an extended object. Figure 2.3.2c shows a spherical mirror that is small compared to its radius of curvature. This mirror is a good approximation of a parabolic mirror, so rays that arrive parallel to the optical axis are reflected to a well-defined focal point. The distance along the optical axis from the mirror to the focal point is called the focal length of the mirror.

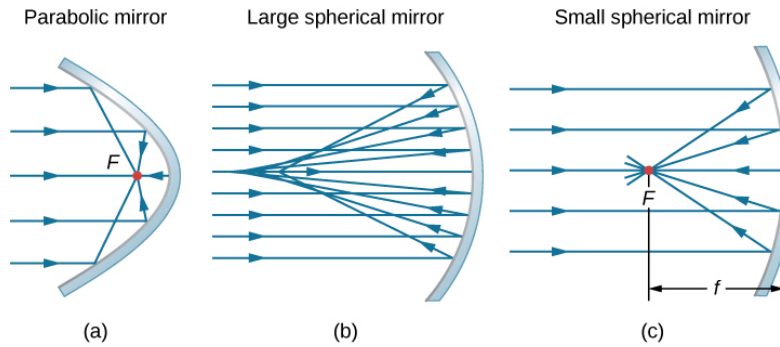


Figure 2.3.2: (a) Parallel rays reflected from a parabolic mirror cross at a single point called the focal point F . (b) Parallel rays reflected from a large spherical mirror do not cross at a common point. (c) If a spherical mirror is small compared with its radius of curvature, it better approximates the central part of a parabolic mirror, so parallel rays essentially cross at a common point. The distance along the optical axis from the mirror to the focal point is the focal length f of the mirror.

A convex spherical mirror also has a focal point, as shown in Figure 2.3.3. Incident rays parallel to the optical axis are reflected from the mirror and seem to originate from point F at focal length f behind the mirror. Thus, the focal point is virtual because no real rays actually pass through it; they only appear to originate from it.

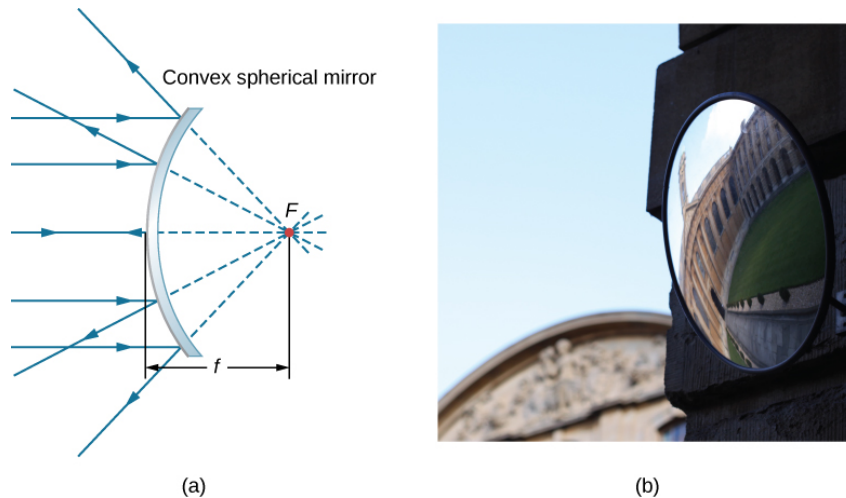


Figure 2.3.3: (a) Rays reflected by a convex spherical mirror: Incident rays of light parallel to the optical axis are reflected from a convex spherical mirror and seem to originate from a well-defined focal point at focal distance f on the opposite side of the mirror. The focal point is virtual because no real rays pass through it. (b) Photograph of a virtual image formed by a convex mirror. (credit b: modification of work by Jenny Downing)

How does the focal length of a mirror relate to the mirror's radius of curvature? Figure 2.3.4 shows a single ray that is reflected by a spherical concave mirror. The incident ray is parallel to the optical axis. The point at which the reflected ray crosses the optical axis is the focal point. Note that all incident rays that are parallel to the optical axis are reflected through the focal point—we only show one ray for simplicity. We want to find how the focal length FP (denoted by f) relates to the radius of curvature of the mirror, R , whose length is

$$R = CF + FP. \tag{2.3.1}$$

The [law of reflection](#) tells us that angles $\angle OXC$ and $\angle CXF$ are the same, and because the incident ray is parallel to the optical axis, angles $\angle OXC$ and $\angle XCP$ are also the same. Thus, triangle CXF is an isosceles triangle with $CF = FX$. If the angle θ is small then

$$\sin \theta \approx \theta \tag{2.3.2}$$

which is called the “**small-angle approximation**”), then $FX \approx FP$ or $CF \approx FP$. Inserting this into Equation 2.3.1 for the radius R , we get

$$\begin{aligned}
 R &= CF + FP \\
 &= FP + FP \\
 &= 2FP \\
 &= 2f
 \end{aligned}
 \tag{2.3.3}$$

In other words, in the small-angle approximation, the focal length f of a concave spherical mirror is half of its radius of curvature, R :

$$f = \frac{R}{2}.$$

In this chapter, we assume that the **small-angle approximation** (also called the **paraxial approximation**) is always valid. In this approximation, all rays are paraxial rays, which means that they make a small angle with the optical axis and are at a distance much less than the radius of curvature from the optical axis. In this case, their angles θ of reflection are small angles, so

$$\sin \theta \approx \tan \theta \approx \theta. \tag{2.3.4}$$

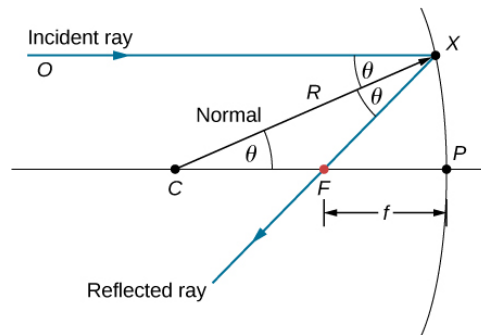


Figure 2.3.4: Reflection in a concave mirror. In the small-angle approximation, a ray that is parallel to the optical axis CP is reflected through the focal point F of the mirror.

Using Ray Tracing to Locate Images

To find the location of an image formed by a spherical mirror, we first use ray tracing, which is the technique of drawing rays and using the law of reflection to determine the reflected rays (later, for lenses, we use the law of refraction to determine refracted rays). Combined with some basic geometry, we can use ray tracing to find the focal point, the image location, and other information about how a mirror manipulates light. In fact, we already used ray tracing above to locate the focal point of spherical mirrors, or the image distance of flat mirrors. To locate the image of an object, you must locate at least two points of the image. Locating each point requires drawing at least two rays from a point on the object and constructing their reflected rays. The point at which the reflected rays intersect, either in real space or in virtual space, is where the corresponding point of the image is located. To make ray tracing easier, we concentrate on four “principal” rays whose reflections are easy to construct.

Figure 2.3.5 shows a concave mirror and a convex mirror, each with an arrow-shaped object in front of it. These are the objects whose images we want to locate by ray tracing. To do so, we draw rays from point Q that is on the object but not on the optical axis. We choose to draw our ray from the tip of the object. Principal ray 1 goes from point Q and travels parallel to the optical axis. The reflection of this ray must pass through the focal point, as discussed above. Thus, for the concave mirror, the reflection of principal ray 1 goes through focal point F , as shown in Figure 2.3.5b. For the convex mirror, the backward extension of the reflection of principal ray 1 goes through the focal point (i.e., a virtual focus). Principal ray 2 travels first on the line going through the focal point and then is reflected back along a line parallel to the optical axis. Principal ray 3 travels toward the center of curvature of the mirror, so it strikes the mirror at normal incidence and is reflected back along the line from which it came. Finally, principal ray 4 strikes the vertex of the mirror and is reflected symmetrically about the optical axis.

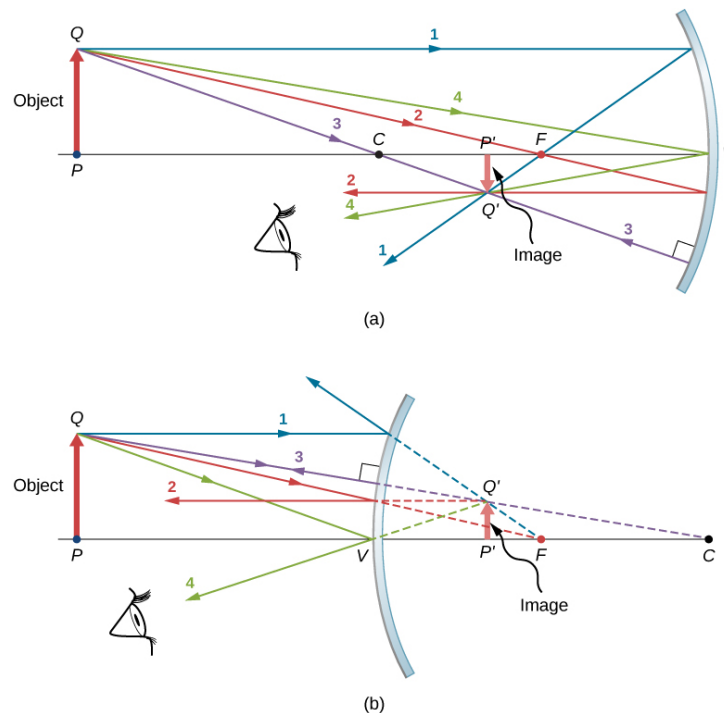


Figure 2.3.5: The four principal rays shown for both (a) a concave mirror and (b) a convex mirror. The image forms where the rays intersect (for real images) or where their backward extensions intersect (for virtual images).

The four principal rays intersect at point Q' , which is where the image of point Q is located. To locate point Q' , drawing any two of these principle rays would suffice. We are thus free to choose whichever of the principal rays we desire to locate the image. Drawing more than two principal rays is sometimes useful to verify that the ray tracing is correct.

To completely locate the extended image, we need to locate a second point in the image, so that we know how the image is oriented. To do this, we trace the principal rays from the base of the object. In this case, all four principal rays run along the optical axis, reflect from the mirror, and then run back along the optical axis. The difficulty is that, because these rays are collinear, we cannot determine a unique point where they intersect. All we know is that the base of the image is on the optical axis. However, because the mirror is symmetrical from top to bottom, it does not change the vertical orientation of the object. Thus, because the object is vertical, the image must be vertical. Therefore, the image of the base of the object is on the optical axis directly above the image of the tip, as drawn in the figure.

For the concave mirror, the extended image in this case forms between the focal point and the center of curvature of the mirror. It is inverted with respect to the object, is a real image, and is smaller than the object. Were we to move the object closer to or farther from the mirror, the characteristics of the image would change. For example, we show, as a later exercise, that an object placed between a concave mirror and its focal point leads to a virtual image that is upright and larger than the object. For the convex mirror, the extended image forms between the focal point and the mirror. It is upright with respect to the object, is a virtual image, and is smaller than the object.

📌 Ray-Tracing Rules

Ray tracing is very useful for mirrors. The rules for ray tracing are summarized here for reference:

- A ray traveling parallel to the optical axis of a spherical mirror is reflected along a line that goes through the focal point of the mirror (ray 1 in Figure 2.3.5).
- A ray traveling along a line that goes through the focal point of a spherical mirror is reflected along a line parallel to the optical axis of the mirror (ray 2 in Figure 2.3.5).
- A ray traveling along a line that goes through the center of curvature of a spherical mirror is reflected back along the same line (ray 3 in Figure 2.3.5).

- A ray that strikes the vertex of a spherical mirror is reflected symmetrically about the optical axis of the mirror (ray 4 in Figure 2.3.5).

We use ray tracing to illustrate how images are formed by mirrors and to obtain numerical information about optical properties of the mirror. If we assume that a mirror is small compared with its radius of curvature, we can also use algebra and geometry to derive a mirror equation, which we do in the next section. Combining ray tracing with the mirror equation is a good way to analyze mirror systems.

Image Formation by Reflection—The Mirror Equation

For a plane mirror, we showed that the image formed has the same height and orientation as the object, and it is located at the same distance behind the mirror as the object is in front of the mirror. Although the situation is a bit more complicated for curved mirrors, using geometry leads to simple formulas relating the object and image distances to the focal lengths of concave and convex mirrors.

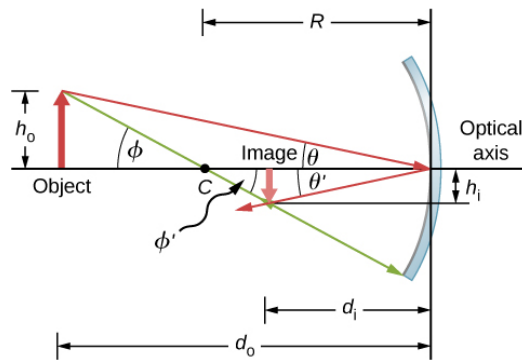


Figure 2.3.6: Image formed by a concave mirror.

Consider the object OP shown in Figure 2.3.6. The center of curvature of the mirror is labeled C and is a distance R from the vertex of the mirror, as marked in the figure. The object and image distances are labeled d_o and d_i , and the object and image heights are labeled h_o and h_i , respectively. Because the angles ϕ and ϕ' are alternate interior angles, we know that they have the same magnitude. However, they must differ in sign if we measure angles from the optical axis, so $\phi = -\phi'$. An analogous scenario holds for the angles θ and θ' . The law of reflection tells us that they have the same magnitude, but their signs must differ if we measure angles from the optical axis. Thus, $\theta = -\theta'$. Taking the tangent of the angles θ and θ' , and using the property that $\tan(-\theta) = -\tan\theta$, gives us

$$\left. \begin{aligned} \tan\theta &= \frac{h_o}{d_o} \\ \tan\theta' &= -\tan\theta = \frac{h_i}{d_i} \end{aligned} \right\} = \frac{h_o}{d_o} = -\frac{h_i}{d_i} \quad (2.3.5)$$

or

$$-\frac{h_o}{h_i} = \frac{d_o}{d_i}. \quad (2.3.6)$$

Similarly, taking the tangent of ϕ and ϕ' gives

$$\left. \begin{aligned} \tan\phi &= \frac{h_o}{d_o - R} \\ \tan\phi' &= -\tan\phi = \frac{h_i}{R - d_i} \end{aligned} \right\} = \frac{h_o}{d_o - R} = -\frac{h_i}{R - d_i}$$

or

$$-\frac{h_o}{h_i} = \frac{d_o - R}{R - d_i}. \quad (2.3.7)$$

Combining Equation 2.3.5 and 2.3.7 gives

$$\frac{d_o}{d_i} = \frac{d_o - R}{R - d_i}.$$

After a little algebra, this becomes

$$\frac{1}{d_o} + \frac{1}{d_i} = \frac{2}{R}. \quad (2.3.8)$$

No approximation is required for this result, so it is exact. However, as discussed above, in the small-angle approximation, the focal length of a spherical mirror is one-half the radius of curvature of the mirror, or $f = R/2$. Inserting this into Equation 2.3.8 gives the **mirror equation**:

$$\underbrace{\frac{1}{d_o} + \frac{1}{d_i}}_{\text{mirror equation}} = \frac{1}{f}. \quad (2.3.9)$$

The mirror equation relates the image and object distances to the focal distance and is valid only in the small-angle approximation (Equation 2.3.2). Although it was derived for a concave mirror, it also holds for convex mirrors (proving this is left as an exercise). We can extend the mirror equation to the case of a plane mirror by noting that a plane mirror has an infinite radius of curvature. This means the focal point is at infinity, so the mirror equation simplifies to

$$d_o = -d_i$$

which is the same equation obtained [earlier](#).

Notice that we have been very careful with the signs in deriving the mirror equation. For a plane mirror, the image distance has the opposite sign of the object distance. Also, the real image formed by the concave mirror in Figure 2.3.6 is on the opposite side of the optical axis with respect to the object. In this case, the image height should have the opposite sign of the object height. To keep track of the signs of the various quantities in the mirror equation, we now introduce a sign convention.

Sign convention for spherical mirrors

Using a consistent sign convention is very important in geometric optics. It assigns positive or negative values for the quantities that characterize an optical system. Understanding the sign convention allows you to describe an image without constructing a ray diagram. This text uses the following sign convention:

1. The focal length f is positive for concave mirrors and negative for convex mirrors.
2. The image distance d_i is positive for real images and negative for virtual images.

Notice that rule 1 means that the radius of curvature of a spherical mirror can be positive or negative. What does it mean to have a negative radius of curvature? This means simply that the radius of curvature for a convex mirror is defined to be negative.

Image Magnification

Let's use the sign convention to further interpret the derivation of the mirror equation. In deriving this equation, we found that the object and image heights are related by

$$-\frac{h_o}{h_i} = \frac{d_o}{d_i}. \quad (2.3.10)$$

See Equation 2.3.6. Both the object and the image formed by the mirror in Figure 2.3.6 are real, so the object and image distances are both positive. The highest point of the object is above the optical axis, so the object height is positive. The image, however, is below the optical axis, so the image height is negative. Thus, this sign convention is consistent with our derivation of the mirror equation.

Equation 2.3.10 in fact describes the **linear magnification** (often simply called "**magnification**") of the image in terms of the object and image distances. We thus define the dimensionless **magnification** m as follows:

$$m = \underbrace{\frac{h_i}{h_o}}_{\text{linear magnification}}. \quad (2.3.11)$$

If m is positive, the image is upright, and if m is negative, the image is inverted. If $|m| > 1$, the image is larger than the object, and if $|m| < 1$, the image is smaller than the object. With this definition of magnification, we get the following relation between the vertical and horizontal object and image distances:

$$m = \frac{h_i}{h_o} = -\frac{d_i}{d_o}.$$

This is a very useful relation because it lets you obtain the magnification of the image from the object and image distances, which you can obtain from the mirror equation.

✓ Example 2.3.1: Solar Electric Generating System

One of the solar technologies used today for generating electricity involves a device (called a parabolic trough or concentrating collector) that concentrates sunlight onto a blackened pipe that contains a fluid. This heated fluid is pumped to a heat exchanger, where the thermal energy is transferred to another system that is used to generate steam and eventually generates electricity through a conventional steam cycle. Figure 2.3.7 shows such a working system in southern California. The real mirror is a parabolic cylinder with its focus located at the pipe; however, we can approximate the mirror as exactly one-quarter of a circular cylinder.



Figure 2.3.7: Parabolic trough collectors are used to generate electricity in southern California. (credit: “kjkolb”/Wikimedia Commons)

1. If we want the rays from the sun to focus at 40.0 cm from the mirror, what is the radius of the mirror?
2. What is the amount of sunlight concentrated onto the pipe, per meter of pipe length, assuming the insolation (incident solar radiation) is 900 W/m^2 ?
3. If the fluid-carrying pipe has a 2.00-cm diameter, what is the temperature increase of the fluid per meter of pipe over a period of 1 minute? Assume that all solar radiation incident on the reflector is absorbed by the pipe, and that the fluid is mineral oil.

Strategy

First identify the physical principles involved. Part (a) is related to the optics of spherical mirrors. Part (b) involves a little math, primarily geometry. Part (c) requires an understanding of heat and density.

Solution

a. The sun is the object, so the object distance is essentially infinity: $d_o = \infty$. The desired image distance is $d_i = 40.0 \text{ cm}$. We use the mirror equation (Equation 2.3.9) to find the focal length of the mirror:

$$\begin{aligned}\frac{1}{d_o} + \frac{1}{d_i} &= \frac{1}{f} \\ f &= \left(\frac{1}{d_o} + \frac{1}{d_i} \right)^{-1} \\ &= \left(\frac{1}{\infty} + \frac{1}{40.0 \text{ cm}} \right)^{-1} \\ &= 40.0 \text{ cm}\end{aligned}$$

Thus, the radius of the mirror is

$$R = 2f = 80.0 \text{ cm}.$$

b. The insolation is 900 W/m^2 . You must find the cross-sectional area A of the concave mirror, since the power delivered is $900 \text{ W/m}^2 \times A$. The mirror in this case is a quarter-section of a cylinder, so the area for a length L of the mirror is $A = \frac{1}{4}(2\pi R)L$. The area for a length of 1.00 m is then

$$\begin{aligned}A &= \frac{\pi}{2}R(1.00 \text{ m}) \\ &= \frac{(3.14)}{2}(0.800 \text{ m})(1.00 \text{ m}) \\ &= 1.26 \text{ m}^2.\end{aligned}$$

The insolation on the 1.00-m length of pipe is then

$$(9.00 \times 10^2 \frac{\text{W}}{\text{m}^2})(1.26 \text{ m}^2) = 1130 \text{ W}.$$

c. The increase in temperature is given by $Q = mc\Delta T$. The mass m of the mineral oil in the one-meter section of pipe is

$$\begin{aligned}m &= \rho V = \rho \pi \left(\frac{d}{2} \right)^2 (1.00 \text{ m}) \\ &= (8.00 \times 10^2 \text{ kg/m}^3)(3.14)(0.0100 \text{ m})^2(1.00 \text{ m}) \\ &= 0.251 \text{ kg}\end{aligned}$$

Therefore, the increase in temperature in one minute is

$$\begin{aligned}\Delta T &= \frac{Q}{mc} \\ &= \frac{(1130 \text{ W})(60.0 \text{ s})}{(0.251 \text{ kg})(1670 \text{ J} \cdot \text{kg}^{-1} \cdot ^\circ\text{C})} \\ &= 162^\circ\end{aligned}$$

Significance

An array of such pipes in the California desert can provide a thermal output of 250 MW on a sunny day, with fluids reaching temperatures as high as 400°C . We are considering only one meter of pipe here and ignoring heat losses along the pipe.

✓ Example 2.3.2: Image in a Convex Mirror

A keratometer is a device used to measure the curvature of the cornea of the eye, particularly for fitting contact lenses. Light is reflected from the cornea, which acts like a convex mirror, and the keratometer measures the magnification of the image. The smaller the magnification, the smaller the radius of curvature of the cornea. If the light source is 12 cm from the cornea and the image magnification is 0.032, what is the radius of curvature of the cornea?

Strategy

If you find the focal length of the convex mirror formed by the cornea, then you know its radius of curvature (it's twice the focal length). The object distance is $d_o=12\text{cm}$ and the magnification is $m=0.032$. First find the image distance d_i and then solve for the focal length f .

Solution

Start with the equation for magnification (Equation 2.3.11) and solving for d_i and inserting the given values yields

$$d_i = -md_o = -(0.032)(12\text{ cm}) = -0.384\text{ cm}$$

where we retained an extra significant figure because this is an intermediate step in the calculation. Solve the mirror equation for the focal length f and insert the known values for the object and image distances. The result is

$$\begin{aligned} \frac{1}{d_o} + \frac{1}{d_i} &= \frac{1}{f} \\ f &= \left(\frac{1}{d_o} + \frac{1}{d_i} \right)^{-1} \\ &= \left(\frac{1}{12\text{ cm}} + \frac{1}{-0.384\text{ cm}} \right)^{-1} \\ &= -40.0\text{ cm} \end{aligned}$$

The radius of curvature is twice the focal length, so

$$R = 2f = -0.80\text{ cm}$$

Significance

The focal length is negative, so the focus is virtual, as expected for a concave mirror and a real object. The radius of curvature found here is reasonable for a cornea. The distance from cornea to retina in an adult eye is about 2.0 cm. In practice, corneas may not be spherical, which complicates the job of fitting contact lenses. Note that the image distance here is negative, consistent with the fact that the image is behind the mirror. Thus, the image is virtual because no rays actually pass through it. In the problems and exercises, you will show that, for a fixed object distance, a smaller radius of curvature corresponds to a smaller the magnification.

📌 PROBLEM-SOLVING STRATEGY: SPHERICAL MIRRORS

- Step 1. First make sure that image formation by a spherical mirror is involved.
- Step 2. Determine whether ray tracing, the mirror equation, or both are required. A sketch is very useful even if ray tracing is not specifically required by the problem. Write symbols and known values on the sketch.
- Step 3. Identify exactly what needs to be determined in the problem (identify the unknowns).
- Step 4. Make a list of what is given or can be inferred from the problem as stated (identify the knowns).
- Step 5. If ray tracing is required, use the ray-tracing rules listed near the beginning of this section.
- Step 6. Most quantitative problems require using the mirror equation. Use the examples as guides for using the mirror equation.
- Step 7. Check to see whether the answer makes sense. Do the signs of object distance, image distance, and focal length correspond with what is expected from ray tracing? Is the sign of the magnification correct? Are the object and image distances reasonable?

Departure from the Small-Angle Approximation

The small-angle approximation (Equation 2.3.4) is a cornerstone of the above discussion of image formation by a spherical mirror. When this approximation is violated, then the image created by a spherical mirror becomes distorted. Such distortion is called aberration. Here we briefly discuss two specific types of aberrations: spherical aberration and coma.

Spherical aberration

Consider a broad beam of parallel rays impinging on a spherical mirror, as shown in Figure 2.3.8. The farther from the optical axis the rays strike, the worse the spherical mirror approximates a parabolic mirror. Thus, these rays are not focused at the same point as

rays that are near the optical axis, as shown in the figure. Because of spherical aberration, the image of an extended object in a spherical mirror will be blurred. Spherical aberrations are characteristic of the mirrors and lenses that we consider in the following section of this chapter (more sophisticated mirrors and lenses are needed to eliminate spherical aberrations).

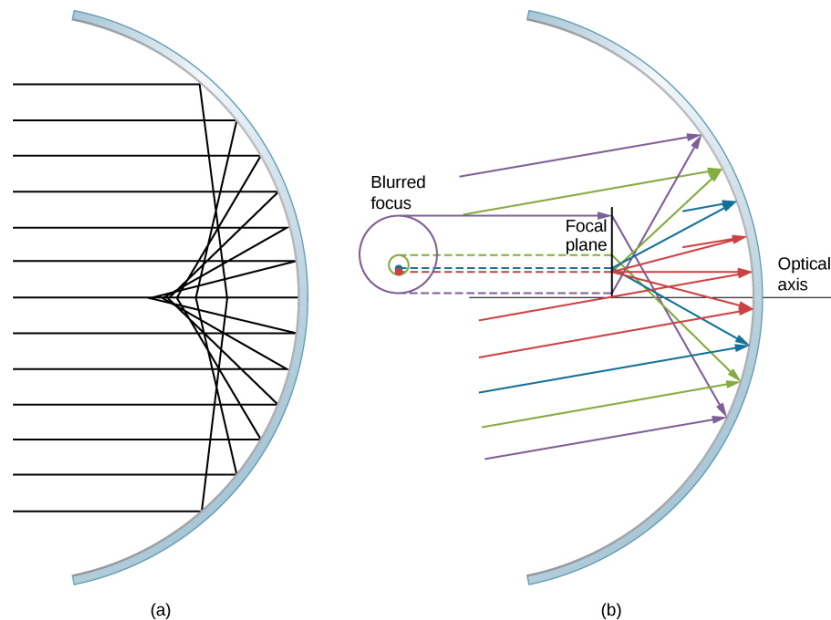


Figure 2.3.8: (a) With spherical aberration, the rays that are farther from the optical axis and the rays that are closer to the optical axis are focused at different points. Notice that the aberration gets worse for rays farther from the optical axis. (b) For comatic aberration, parallel rays that are not parallel to the optical axis are focused at different heights and at different focal lengths, so the image contains a “tail” like a comet (which is “coma” in Latin). Note that the colored rays are only to facilitate viewing; the colors do not indicate the color of the light.

Coma or Comatic Aberration

Coma is similar to spherical aberration, but arises when the incoming rays are not parallel to the optical axis, as shown in Figure 2.3.8b. Recall that the small-angle approximation holds for spherical mirrors that are small compared to their radius. In this case, spherical mirrors are good approximations of parabolic mirrors. Parabolic mirrors focus all rays that are parallel to the optical axis at the focal point. However, parallel rays that are **not** parallel to the optical axis are focused at different heights and at different focal lengths, as shown in Figure 2.3.8b. Because a spherical mirror is symmetric about the optical axis, the various colored rays in this figure create circles of the corresponding color on the focal plane.

Although a spherical mirror is shown in Figure 2.3.8b, comatic aberration occurs also for parabolic mirrors—it does not result from a breakdown in the small-angle approximation (Equation 2.3.4). Spherical aberration, however, occurs only for spherical mirrors and is a result of a breakdown in the small-angle approximation. We will discuss both coma and spherical aberration later in this chapter, in connection with telescopes.

This page titled [2.3: Spherical Mirrors](#) is shared under a [CC BY 4.0](#) license and was authored, remixed, and/or curated by [OpenStax](#) via [source content](#) that was edited to the style and standards of the LibreTexts platform.

- [2.3: Spherical Mirrors](#) by [OpenStax](#) is licensed [CC BY 4.0](#). Original source: <https://openstax.org/details/books/university-physics-volume-3>.