



US 20060227995A1

(19) **United States**

(12) **Patent Application Publication**
Spatharis

(10) **Pub. No.: US 2006/0227995 A1**

(43) **Pub. Date: Oct. 12, 2006**

(54) **IMAGE ACQUISITION AND EXPLOITATION
CAMERA SYSTEM AND METHODS
THEREFORE**

Related U.S. Application Data

(60) Provisional application No. 60/669,913, filed on Apr. 11, 2005.

(76) Inventor: **Panayotis B. Spatharis**, Washington, DC (US)

Publication Classification

(51) **Int. Cl.**
G06K 9/00 (2006.01)
(52) **U.S. Cl.** **382/100**

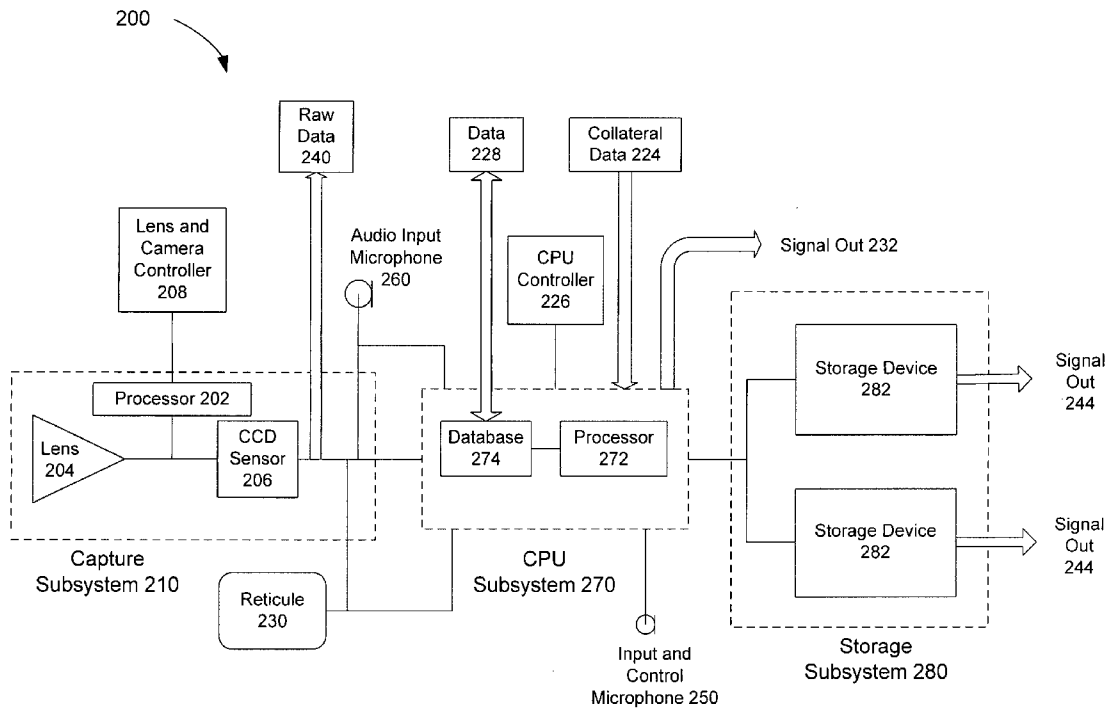
Correspondence Address:
COOLEY GODWARD LLP
ATTN: PATENT GROUP
THE BOWEN BUILDING
875 15TH STREET, N.W. SUITE 800
WASHINGTON, DC 20005-2221 (US)

(57) **ABSTRACT**

A system for extracting, processing, and sending metadata associated with audio data and/or video data is described. In one embodiment, a system includes a sensor configured to acquire image data. A first electronic board with a processor is configured to control the sensor. A second electronic board that is configured to enrich the image data is operatively and removably coupled to the first electronic board.

(21) Appl. No.: **11/398,721**

(22) Filed: **Apr. 6, 2006**



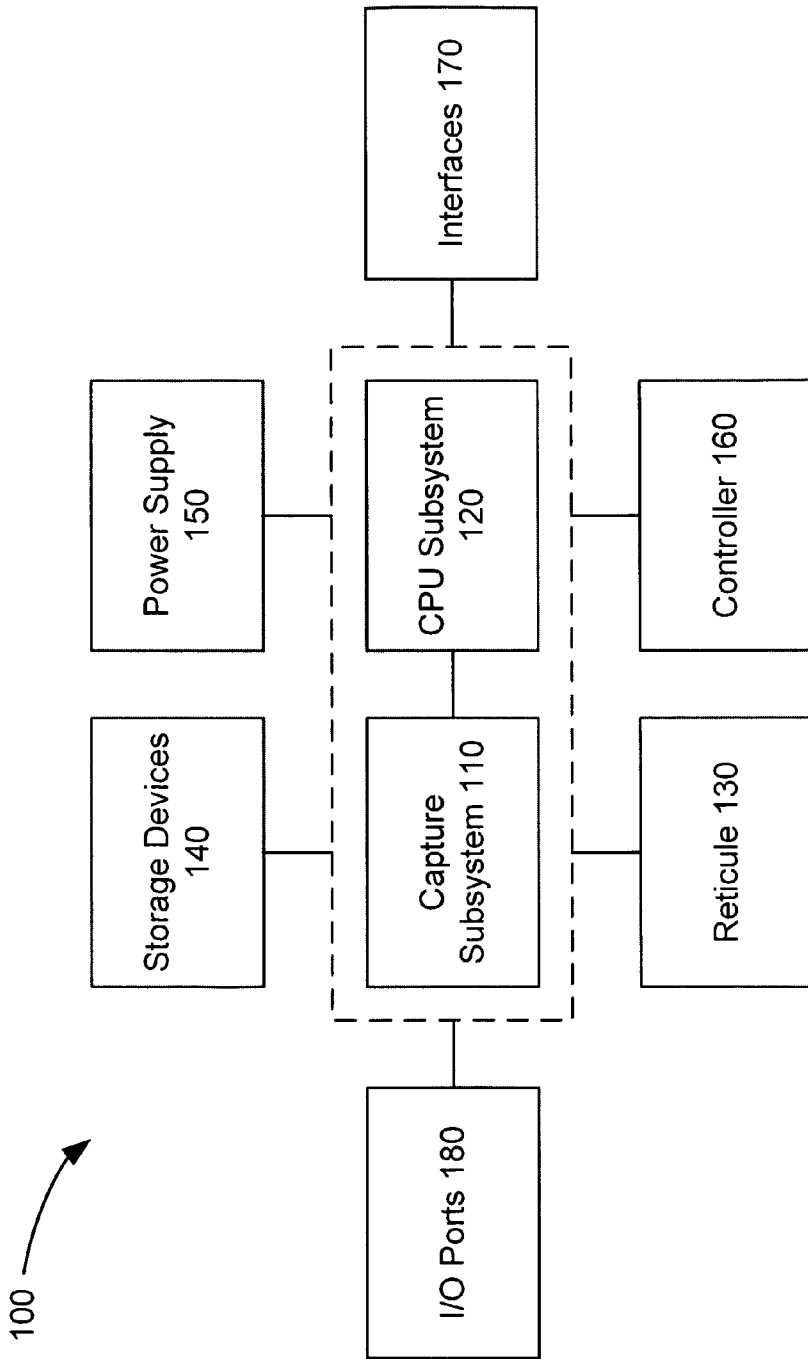


FIG. 1

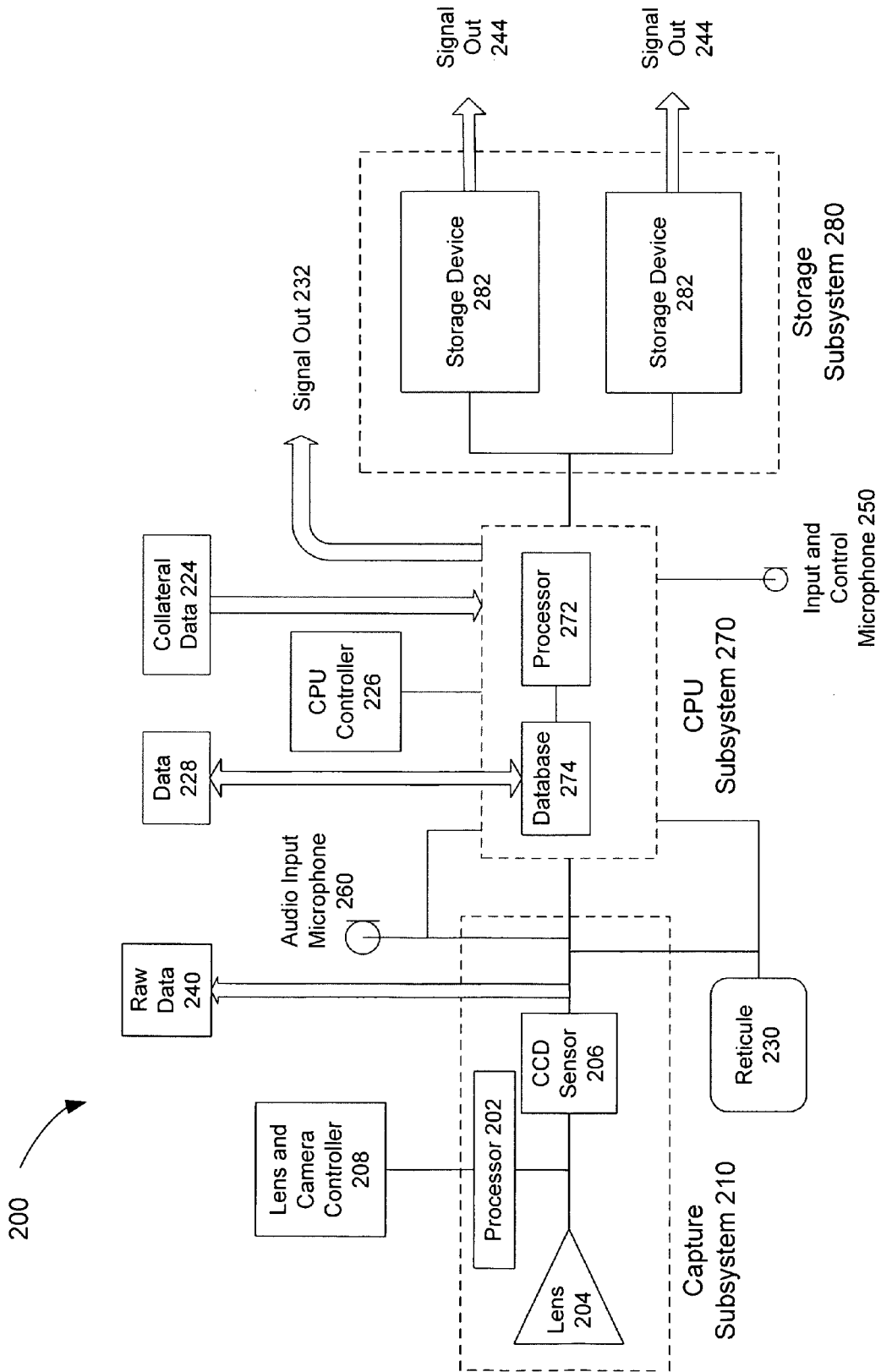


FIG. 2

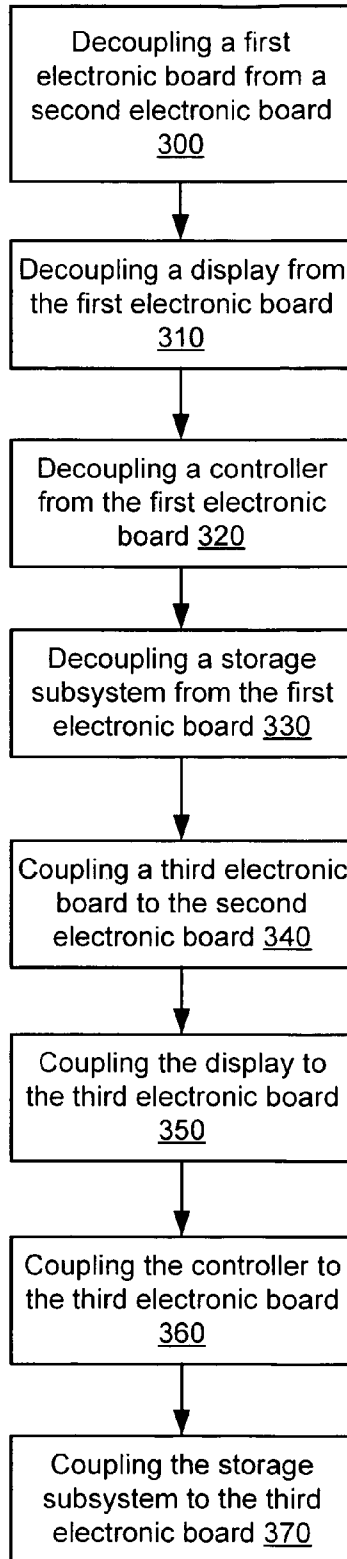


FIG. 3

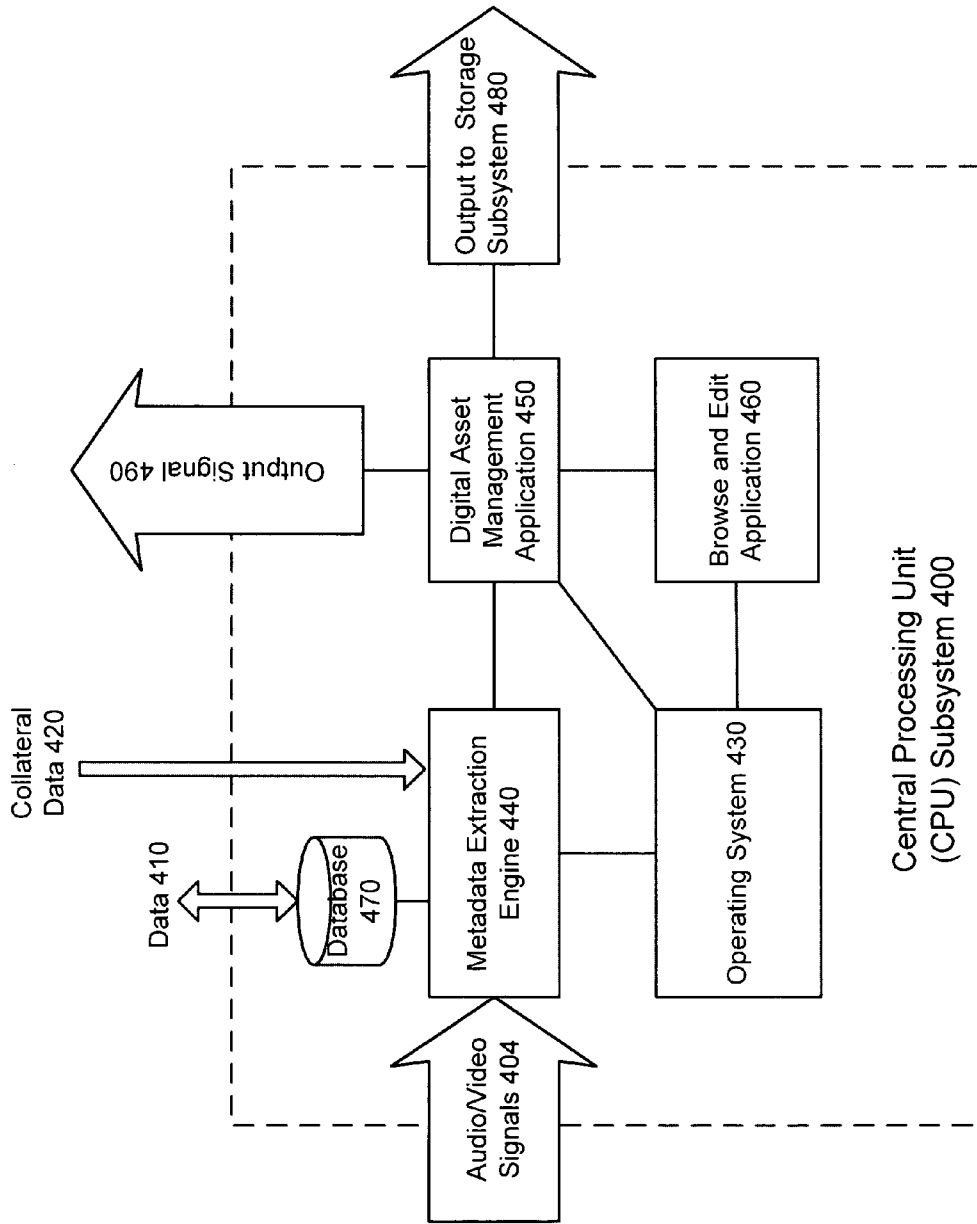


FIG. 4

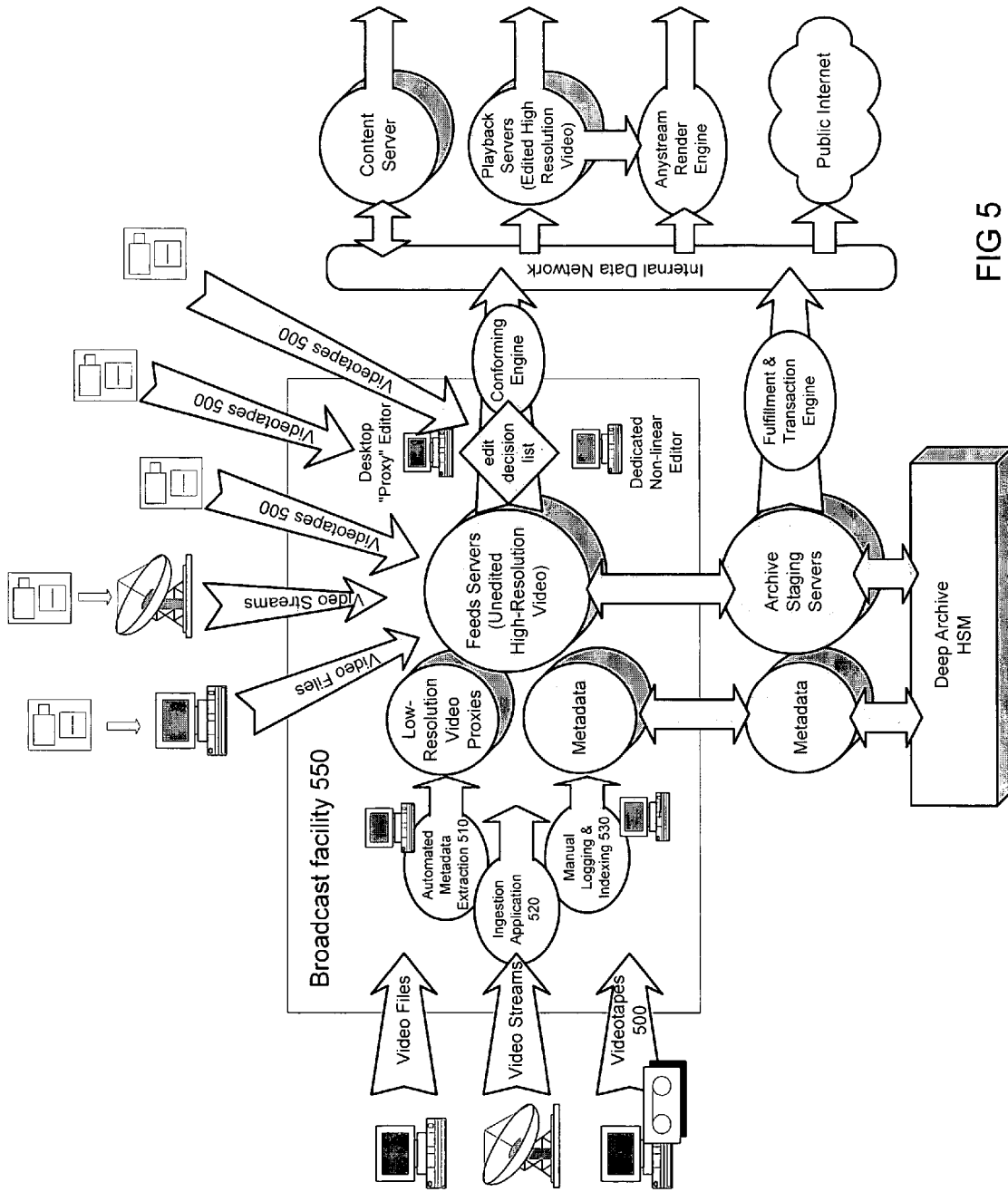


FIG 5

IMAGE ACQUISITION AND EXPLOITATION CAMERA SYSTEM AND METHODS THEREFORE

RELATED APPLICATIONS

[0001] The present application claims priority to the commonly owned U.S. Provisional Patent Application No. 60/669,913, Attorney Docket No. ACAG-001/00US, entitled "Image Acquisition and Exploitation Camera System," filed on Apr. 11, 2005, which is incorporated herein by reference in its entirety.

FIELD OF INVENTION

[0002] The present invention relates to image and audio processing, and in particular, but not by way of limitation, the present invention relates to a system for extracting, processing and/or sending metadata associated with images and/or sound.

BACKGROUND

[0003] Capture devices such as video recorders and still picture cameras can capture, digitize, and store sound and/or images, but are typically limited in their ability to organize, process, and send the information once captured. In applications where, for example, distributed cameras are regularly capturing content, processing and organizing the captured content can be important, particularly if specific portions of the captured content will be subsequently sent and/or retrieved.

[0004] Captured content can be organized and processed using post processing techniques that include the extraction and association of metadata. Metadata can be defined based on the captured content, defined using collateral data, and associated with the captured content.

[0005] Metadata extraction and association, however, are typically not performed in real-time or substantially real-time. Also, many of the components used to perform the post-capture processing have life cycles that are much shorter than that of a typical capture device. Thus, a need exists for an apparatus with interchangeable components and/or subsystems that can extract, process and send, in real-time or substantially real-time, metadata associated with captured content and/or the captured content.

SUMMARY OF THE INVENTION

[0006] In one embodiment, a system includes a sensor configured to acquire image data. A first electronic board with a processor is configured to control the sensor. A second electronic board that is configured to enrich the image data is operatively and removably coupled to the first electronic board.

BRIEF DESCRIPTION OF THE DRAWINGS

[0007] **FIG. 1** is a system block diagram of a camera system, according to an embodiment of the invention.

[0008] **FIG. 2** is system block diagram of a camera system having a capture subsystem, a central processing unit (CPU) subsystem, and a storage subsystem, according to an embodiment of the invention.

[0009] **FIG. 3** is a flowchart that illustrates a method for replacing an electronic board within a camera system, according to an embodiment of the invention.

[0010] **FIG. 4** shows a system block diagram of CPU subsystem, according to an embodiment of the invention.

[0011] **FIG. 5** shows a camera system integrated into a broadcast facility, according to an embodiment of the invention.

DETAILED DESCRIPTION

[0012] In one embodiment, a camera system, which can also be referred to as an image acquisition and exploitation system, configured to extract, process, and/or send metadata associated with captured sound and/or images (e.g., video) is described. The captured sound and/or images can be referred to as content or captured content. The camera system not only captures the sound and/or images, but also can extract and/or process metadata from the captured content. The camera system can make the captured content and/or associated metadata available to a user for exploitation in substantially real-time. The extracting and/or processing of metadata from associated captured content can be referred to as enriching or indexing. The processing of captured content can be referred to as manipulation.

[0013] In another embodiment, a camera system can include multiple distributed capture devices that capture sound and/or images. These captured sound and/or images that can be enriched in distributed subsystems or in a centralized system containing multiple subsystems. The components and/or subsystems included in a camera system can be interchangeable and contained in one or more housings. For example, if applied in, for example, a broadcast facility, content captured on different types of media and transmitted using different methods can be centrally enriched. The centrally enriched content can be sent and/or retrieved with or without associated metadata for immediate use or further processing. Metadata is data about captured content that includes, for example, data, tags, annotations, and/or markings that can be associated with captured content. Metadata can be used to aid a user and/or a computer system to, for example, index/organize/classify, retrieve and/or process captured content.

[0014] **FIG. 1** is a block diagram of a camera system **100**, according to an embodiment of the invention. The subsystems (e.g., CPU subsystem **120**) and/or components (e.g., reticule **130**) can be connected either by wires or coupled wirelessly. The camera system **100** in **FIG. 1** includes a capture subsystem **110** that acquires, for example, sound and/or images using, for example, a sensor (not shown). The sensor can be, for example, a still camera or a video camera that can include one or more lenses, charged-coupled device (CCD) chips, microphones, and/or processors. The capture subsystem **110** can also be referred to as a visual and audio capture subsystem. This subsystem **110** captures video and/or audio that can be made available as data for processing (also can be referred to as exploitation) by another subsystem. The capture subsystem **110** can include an ordinary or sophisticated video or still camera with a video and/or audio output.

[0015] The camera system **100** in **FIG. 1** also includes a central processing unit (CPU) subsystem **120** that can include any combination of processors, memory, video subassemblies and/or audio subassemblies. The CPU subsystem **120** can also include a fixed or removable storage device (not shown) such as a hard disk or flash memory

associated with, for example, an application-specific integrated circuit (ASIC) (not shown). Any of the components within the CPU subsystem **120** can be embedded in, for example, an electronic board such as a motherboard. The CPU subsystem **120** can process and be programmed with software applications such as metadata engines that analyze, for example, images in real-time and extract information about content that has been acquired. The CPU subsystem **120** can also include media-asset-management applications and post-production applications for enriching captured content by indexing, manipulating and/or editing the content.

[0016] A reticule **130** is included in this camera system **100** for viewing images acquired by the capture subsystem **110**. The reticule **130**, which can be referred to as a viewfinder, can be any kind of appropriate display. The reticule **130** can also be used to aim, for example, a camera within the capture subsystem **110** to capture video and/or audio. The reticule **130** can also be used to display metadata generated by a metadata generation engine that is executed by, for example, the CPU subsystem **120**. The reticule **130** can display images already captured for the purpose of manipulating (e.g., editing) these images.

[0017] The camera system **100** also includes a fixed and/or removable storage device **140**. The storage device can be, but is not limited to, a tape, DVD, DVC, flash memory, and/or hard disk. The storage device **140**, for example, can store applications used to execute metadata extraction engines, editing programs, and can store content that is acquired, generated, or processed by any of the subsystems. The camera system **100** in FIG. 1 also includes a power supply **150** that can be, for example, a rechargeable and/or replaceable power pack or packs that provide power to the associated subsystems.

[0018] Camera system **100** includes a controller **160** that allow a user to control subsystems and/or manipulate audio and/or image signals/data. For example, the controller **160** can be used to control components within subsystems such as the zoom on a lens and/or camera system **100** on/off switches. The controller **160** can also be configured to control camera system **100** functions such as marking shots and annotating content. The controller **160** can be directly coupled to and can directly control a particular subsystem within the capture subsystem **110**.

[0019] Interfaces **170** are also included in this camera system **100** to attach, for example, external monitors, keyboards, mice or other input devices using tactile, audio or optical commands that allow for the content to be identified and/or manipulated. Input and output (I/O) ports **180** can be included as components of the camera system **100**. I/O ports **180** can be used to couple to outside systems that, for example, load programs, data, executable commands into the camera system **100** and/or its subsystems. I/O ports **180** can also be used to extract signals, content, and/or metadata from the camera system **100** to outside systems.

[0020] The subsystems and/or components of camera system **100** can be modular or interchangeable to allow location in separate device/containers or within the same device/container. Such a device and/or container can also be referred to as a housing. For example, in one embodiment, some of these subsystems and/or components can be located in a housing, while the remaining subsystems can be located near and outside of the housing. Such an embodiment can

have, for example, subsystems including the CPU subsystem **120** and its associated applications and software engines (described below) located within a housing while other components such as storage devices **140** can be located with or worn by a user.

[0021] The subsystems (e.g., capture subsystem **110**) and/or components (e.g., power supply **150**) can be included on separate electronic boards that are removably coupled within, for example, a housing of a capture subsystem **110**. In some embodiments, the subsystems and/or components can be included on electronic boards in separate housings. Even if in a separate housing the subsystems and/or components can be collectively referred to as a camera system.

[0022] Although the components/subsystems can be in separate containers, the components/subsystems are coupled in a mode that prevents degraded quality of the captured content or significant transmission delays that would defeat the advantages of substantially real-time exploitation. In other words, the components/subsystems are coupled so that image and/or sound data can be transmitted between the components with, for example, minimal amounts of buffering or transmission delay. In some embodiments, the components/subsystems, although contained in different containers, can be connected using, for example, category-5 cable within an office complex.

[0023] FIG. 2 is system block diagram of an example embodiment of a camera system **200** that includes a capture subsystem **210**, a CPU subsystem **270**, and a storage subsystem **280**. The capture subsystem **210** acquires images and/or sounds that are processed by the CPU subsystem **270**. After the CPU subsystem **270** processes the information, it is transmitted to the storage subsystem **280**. The subsystems within the camera system **200** can be contained in separate housings.

[0024] The capture subsystem **210**, also referred to as a visual and audio capture subsystem, includes a CCD sensor **206**, a set of lenses **204**, and a processor **202**. The CCD sensor **206** captures, through the lenses **204**, visual information (e.g., video) that is converted into a digital data. The digital data is made available to a reticule **230** for viewing as a raw (i.e. unenriched) picture. The capture subsystem **210** also includes a source audio input microphone **260** that digitally captures sound. The captured digital audio and/or video data, which can be collectively referred to as content, are made available to the CPU subsystem **270** for processing. The capture subsystem **210** can be any type of ordinary or sophisticated still camera or video recorder that can include any combination of one or more lenses **204**, CCD **206** sensors and/or microphones **260**. In some embodiments, the video and/or audio captured by the capture subsystem **210** can be analog signals that are converted into digital signals/data.

[0025] The reticule **230** allows for viewing an image that is to be acquired and can be used to aim the CCD sensor **206** and accompanying lens **204** in the capture subsystem **210**. The reticule **230** can be used for displaying metadata generated by a metadata generation engine (not shown) within the CPU subsystem **270**. The reticule **230** can also be configured to display images so that they can be processed (e.g., edited, annotated) by, for example, a user.

[0026] The storage subsystem **280** includes storage devices **282** that can be configured to send captured content

(e.g., enriched and/or unenriched) via signals **244** to other systems (not shown) for, for example, further processing and/or distribution. The storage subsystem **280** can store raw content (i.e., unenriched content) or content that has been enriched (e.g., processed and associated with metadata) by the CPU subsystem **270**. The storage devices **282** can be any kind of removable storage device. Data can be stored in the storage subsystem **280** in many formats or at multiple data rates. Metadata can be permanently associated with the content (i.e., enriched content) or the content can be separated from the metadata when stored.

[0027] The camera system **200** in **FIG. 2** also includes a lens and camera controller **208** that is associated with the capture subsystem **210**. The lens and camera controller **208**, in this embodiment, interfaces with processor **202** to control, for example, the zoom of the lens **204**. The lens and camera controller **208** is used to turn the entire camera system **200** on and off. In some embodiments, the lens and camera controller **208** can be configured to turn only a portion of the camera system **200**, such as the capture subsystem **210**, on and off.

[0028] The camera system **200** includes a CPU controller **226** that can be used to control the CPU subsystem **270**. For example, the CPU controller **226** can be configured to allow, for example, a user to edit content acquired by the capture subsystem **210**. In some embodiments, controls that are associated with other subsystems and/or combinations of subsystems can be used to control any function associated with the camera system **200**. For example, a separate control device can be used to mark shots and annotate content.

[0029] The CPU subsystem **270** includes a processor **272** and a database **274**. The CPU subsystem **270**, processes the digital signals produced by the capture subsystem **210** using the processor **272**. The processor **272**, for example, executes applications for manipulating content captured by the capture subsystem **210**. The database **274** can be accessed and used by, for example, applications executed by the processor **272** during the processing of captured content. A more detailed example of a CPU subsystem **270** is shown in **FIG. 4**.

[0030] Referring back to **FIG. 2**, the capture subsystem **210**, the CPU subsystem **270**, and the storage subsystem **280** are separate subsystems that can be included as removably coupled subsystems on, for example, separate electronic boards in a single housing or in separate housings. For example, the CPU subsystem **270** and associated components can be included on a motherboard that is in the same housing as a separate motherboard for the capture subsystem **210**.

[0031] The subsystems of camera system **200**, as discussed above, can be located either in separate containers (e.g., device housing) or within the same container. For example, the CPU subsystem **270** can be incorporated into an existing capture subsystem **210** housing that includes, for example, an off-the-shelf (OTS) optical camera. The existing capture subsystem **210** can be retrofitted with the CPU subsystem **270**. Retrofitting includes re-programming components on, removing components from and/or adding components to the CPU subsystem **270** so that the CPU subsystem **270** is compatible with the existing capture subsystem **210**. The CPU subsystem **270** can also include OTS components. Other components such as the storage

subsystem **280** can be located nearby or can even be worn by a camera operator. This camera system **200** embodiment can have applications, for example, in the broadcast, military and security industries.

[0032] The camera system **200** includes an input and control microphone **250** that can receive commentary from, for example, a camera system operator assisting in the identification of shots and/or describing the content. The input and control microphone **250** can also receive voice commands for the operation of the camera system **200** and/or for the manipulation of the content. Audio input captured by a camera system operator using the input and control microphone **250** can also be analyzed to extract metadata for enriching (e.g. full indexing).

[0033] The camera system **200** also includes several inputs and outputs from the subsystems and components. The figure shows that raw data **240** from the CCD sensor **206** can be accessed from the capture subsystem **210**, for example, by a system (not shown) that is not part of the camera system **200**. The figure also illustrates that collateral data **224** can be input into and an output signal **232** can be extracted from the CPU subsystem **270**. Collateral data includes **224**, for example, additional marking and/or annotating data that can be used by the CPU subsystem **270** to process image and/or sound data.

[0034] The output signal **232** can be a processed signal that contains audio and/or video with associated metadata (i.e., enriched data). The output signal **232** can be transmitted at a single or variable rate. Output signals **244** from the storage devices **282** within the storage subsystem **280** allow the downloading of the stored content and/or associated metadata into asset-management (not shown), archiving (not shown), or library systems (not shown). The data signal **228** is a bidirectional signal that allows for the loading of data into the camera system **200** necessary for metadata extraction and for the population of external databases with data (e.g., audio and/or images) acquired using the camera system **200**. In other embodiments, other I/O ports (not shown) can be used to allow programs, data, executable commands to be loaded into the camera system **200** and its subsystems, and to extract a variety of signals, content, and/or metadata out of the camera system **200**.

[0035] In some embodiments, a rechargeable and/or replaceable power pack or packs (not shown) can be used to provide power to any of the subsystems within the camera system **200**. In yet other embodiments, interfaces and ports (not shown) for attaching external monitors, keyboards, mice or other input devices using tactile, audio or optical commands can be used to allow for capture content to be identified and/or manipulated.

[0036] **FIG. 3** is a flowchart that illustrates a method for replacing, within a camera system, a first electronic board with a third electronic board (also can be referred to as a replacement board), according to an embodiment of the invention. The first electronic board that is being replaced is coupled to a second electronic board (also can be referred to as a retrofitted electronic board). The first electronic board and the second electronic board are contained in the same housing. The second electronic board can be, for example, a motherboard for a capture subsystem and the first and third electronic boards can be, for example, a CPU subsystem motherboard and a replacement CPU subsystem mother-

board, respectively. Alternatively, in some embodiments, the retrofitted electronic board can be contained in a different container/housing as the electronic board that is being replaced.

[0037] As shown in FIG. 3, the first electronic board is decoupled from the second electronic board at 300. A display, a controller, and a storage subsystem are all decoupled from the first electronic board at 310, 320, and 330, respectively. The third electronic board is then coupled to the second electronic board at 340. The display, controller, and storage subsystem are all coupled to the third electronic board at 350, 360, and 370, respectively. When the first electronic board is replaced by the third electronic board, the second electronic board, display, controller, and storage subsystem, etc. are retrofitted with the third electronic board. Retrofitting can include, for example, one or more of programming components on, removing components from and/or adding components to the third electronic board so that the third electronic board is compatible with each of the components/subsystems to which the third electronic board is coupled.

[0038] Although FIG. 3 shows that the first electronic board is decoupled first, the display is decoupled second, the controller is decoupled third, etc., the subsystems/components can be decoupled and coupled in any order in other embodiments. For example, in some embodiments, the display can be decoupled from the first electronic board and coupled to the third electronic board before the first electronic board is decoupled from the second electronic board. Also, in some embodiments, other components and/or subsystems, such as a power supply, can be retrofitted with a replacement electronic board.

[0039] FIG. 4 is an example of a CPU subsystem 400 that executes various software applications including an operating system 430 and applications. Such applications can be, for example, third-party applications (i.e., off-the-shelf applications). The applications can include, for example, metadata extraction engines 440 (e.g., Virage's Videologger and/or Audiologger), digital-asset-management 450 (e.g., Artesia Technologies' Digital Asset Management (DAM)) and browsing and editing programs 460 (e.g., Apple's Final Cut Pro). The CPU subsystem 400 can be configured to use many types of off-the-shelf (OTS) software, for example, security software that includes moving object, gate, and/or object analysis (e.g., Cemium Perceptrak). These programs can be used to manipulate captured content on-demand using input devices such as, but not limited to, a keyboard (not shown), a mouse (not shown), or by using voice or optical commands (not shown). The manipulated and/or raw content can be displayed through a reticule (not shown) or through an outside device such as a monitor (not shown). The applications can be executed on one or more processors (not shown) within the CPU subsystem 400. Processors within the CPU subsystem 400 can be specialized modules (e.g., ASICS or digital signal processors) dedicated to performing specific functions such as metadata extraction.

[0040] Collateral data 420, which can also be referred to as customizable data, such as date, time, camera properties, GPS etc. can also be received by the CPU subsystem 400. Other collateral data 420 such as clip marking generated by applications and/or hardware from manufacturers (e.g., Sony) can also be entered into the CPU subsystem 400.

[0041] Signals received by the CPU subsystem 400 such as audio and/or video signals 404 are received and processed using the applications described above. The audio and/or

video signals 404 can be received from, for example, a capture subsystem (not shown). The processing of the audio and/or video signals 404 within the CPU subsystem 400 is managed by a digital-asset-management application 450. The digital-asset-management application 450 can send and/or receive raw and/or enriched content from the metadata extraction engine 440 and/or the browse and edit application 460. The digital-asset-management application 450 can also send raw and/or enriched content as an output signal 490 and/or as an output to a storage subsystem 480.

[0042] The metadata extraction engine 440 provides analysis of the audio/video signal 404 by extracting information about the content such as faces, words, keyframe information through speech to text conversion, speaker identification, visual properties face recognition, voice recognition, optical character recognition (OCR), and other characteristics and attributes. The method of extraction, amount of information and reliability of the extracted data depends on the particular metadata extraction engine 440. The metadata extraction engine 440 produces a high-resolution indexed data stream and a low-resolution proxy data stream. These streams can be provided to the storage subsystem 480, can be output as a signal 490, and/or can be output to the browse-and-edit application 460. The metadata extraction engine 440 can also generate content at multiple data rates and multiple resolutions. Lower rates can be used for searching and browsing. A lower rate system output reduces the required average bandwidth for transmitting the content, raw or indexed.

[0043] The browse-and-edit application 460 can be manipulated by, for example, an operator using a control console (not shown). Content that is edited by the browse-and-edit application 460 can be transmitted with or without associated metadata as an output signal 490 and/or to the storage subsystem 480 via the digital-asset-management application 450. The content-based metadata or any other data stream can also be displayed on a reticule (not shown). The reticule can also be used to monitor the manipulation of data when editing.

[0044] Metadata extracted from captured content and/or raw (i.e., original) content can be stored in, for example, a storage subsystem (not shown) or in database 470. The data can be stored in one or more formats. In some embodiments, the metadata can be permanently associated with the captured content. The captured content and/or metadata can be stored at multiple data rates. The captured content can be separated from the metadata and stored as raw (i.e., original) content.

[0045] FIG. 5 shows a camera system used in conjunction with a typical broadcast facility 550. The figure shows examples of the signals that flow within the typical broadcast facility. The system block unit identified as videotapes 500 can include for example, but is not limited to, a digital video disc (DVD), a digital video cassette (DVC), flash memory and/or a hard disk. The videotapes 500 can be transmitted via a wireless connection, a universal serial bus (USB) connection, and/or a firewire connection.

[0046] FIG. 5 shows the system block units automated metadata extraction 510, ingestion application 520 and manual logging & indexing 530. Each of these system block units represent one or more applications that can be executed within, for example, a CPU subsystem within a camera system as described above in reference to FIGS. 1-4. In this embodiment shown in FIG. 5, the system block units can be internal to the broadcast facility 550 and process image

and/or sound data to produce any combination of raw or enriched content. In other embodiments, the system block units can be located internal to or co-located with the camera system in addition to being located at the broadcasting facility. Thus, the camera system discussed above in reference to FIGS. 1-4 can be used with existing broadcast facilities and can provide some of the broadcast functionality at the camera system.

[0047] In conclusion, among other things, a system for extracting, processing, and sending metadata associated with audio data and/or video data is described. While various embodiments of the invention have been described above, it should be understood that they have been presented by way of example only, and various changes in form and details may be made. For example, the camera system can be used in many applications such as, for example, security and military applications.

What is claimed is:

- 1. An apparatus, comprising:
 - a sensor configured to acquire an image data;
 - a first electronic board including a first processor configured to control the sensor; and
 - a second electronic board including a second processor configured to enrich the image data, the second electronic board being operatively and removably coupled to the first electronic board.
- 2. The apparatus of claim 1, wherein the second processor is configured to enrich the image data in substantially real-time.
- 3. The apparatus of claim 1, wherein the first electronic board is coupled to the second electronic board such that the image data can be enriched in substantially real-time.
- 4. The apparatus of claim 1, further comprising:
 - a controller coupled to the second electronic board, the controller is configured to receive an input, the controller controls the enriching of the image data by the second processor based on the input.
- 5. The apparatus of claim 1, wherein the first electronic board is retrofitted with the second electronic board.
- 6. The apparatus of claim 1, wherein the second electronic board is configured to receive at least one of a collateral data or an audio signal from a microphone.
- 7. The apparatus of claim 1, further comprising:
 - an audio sensor configured to acquire audio data, the first processor is configured to receive the audio data from the audio sensor, the second processor is configured to enrich the audio data in substantially real-time.
- 8. The apparatus of claim 1, further comprising:
 - a storage subsystem, the storage subsystem is operatively and removably coupled to the second electronic board.
- 9. The apparatus of claim 1, further comprising:
 - a display coupled to at least one of the first electronic board or the second electronic board, the display being configured to receive and display data from at least one of the first electronic board or the second electronic board.
- 10. An apparatus, comprising:
 - a capture subsystem having a sensor configured to capture content, the captured content including at least one of an image or a sound; and

a central processing unit (CPU) subsystem configured to associate metadata with the captured content in substantially real-time, the CPU subsystem being operatively and removably coupled to the capture subsystem.

- 11. The apparatus of claim 10, further comprising:
 - a storage subsystem configured to store at least one of the captured content or the metadata, the storage subsystem including a removable storage device.
- 12. The apparatus of claim 10, wherein the capture subsystem is an interchangeable subsystem configured to receive the content from the existing capture subsystem.
- 13. The apparatus of claim 10, further comprising:
 - a CPU controller configured to receive an input, the CPU controller controls a function associated with the CPU subsystem based on the input.
- 14. The apparatus of claim 10, further comprising:
 - a controller configured to receive an input, the controller controls a function associated with the capture subsystem based on the input.
- 15. A method, comprising:
 - decoupling a first electronic board from a second electronic board, the first electronic board including a first processor configured to enrich an image data, the second electronic board including a processor configured to control a sensor configured to acquire the image data; and
 - coupling a third electronic board to the second electronic board, the second electronic board including a second processor configured to enrich the image data.
- 16. The method of claim 15, wherein the third electronic board is coupled to the second electronic board such that the image data can be enriched in substantially real-time, the second processor is configured to enrich the image data in substantially real-time.
- 17. The method of claim 15, wherein the second electronic board is configured to receive at least one of a collateral data or an audio signal from an audio sensor, the second processor is configured to enrich the audio signal in substantially real-time.
- 18. The apparatus of claim 15, further comprising:
 - decoupling a display from the first electronic board; and
 - coupling the display to the third electronic board, the display being configured to receive and display data from at least one of the second electronic board or the third electronic board.
- 19. The apparatus of claim 15, further comprising:
 - decoupling a controller from the first electronic board; and
 - coupling the controller to the third electronic board, the controller is configured to receive an input, the controller controls the enriching of the image data by the third processor based on the input.
- 20. The apparatus of claim 15, further comprising:
 - decoupling a storage subsystem from the first electronic board; and
 - coupling the storage subsystem to the third electronic board.

* * * * *