

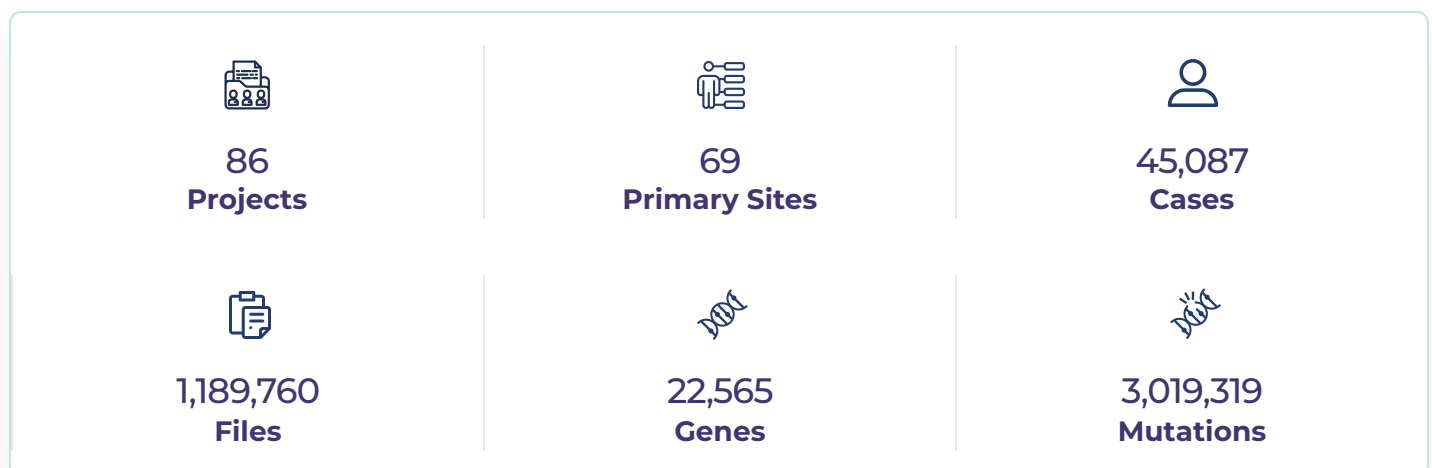
Genomic Data Commons Data Portal

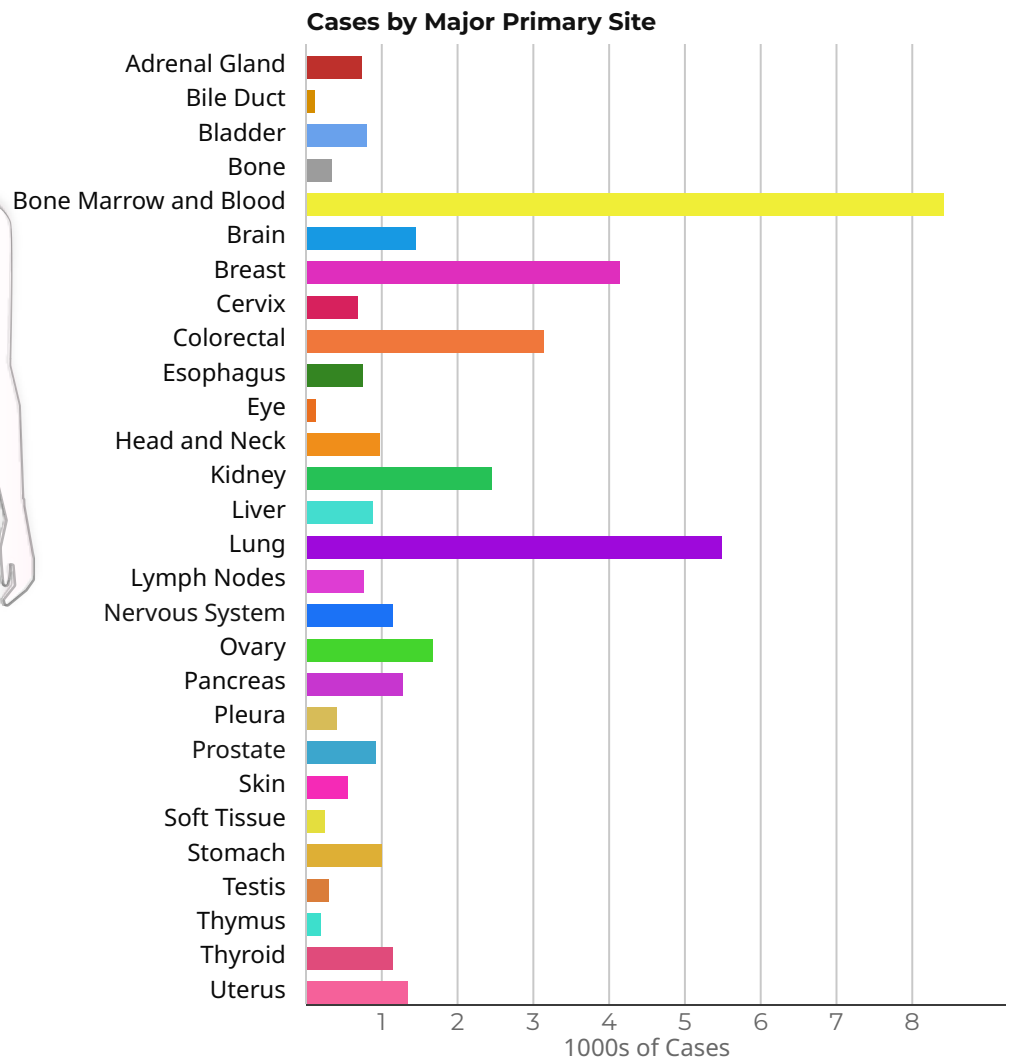
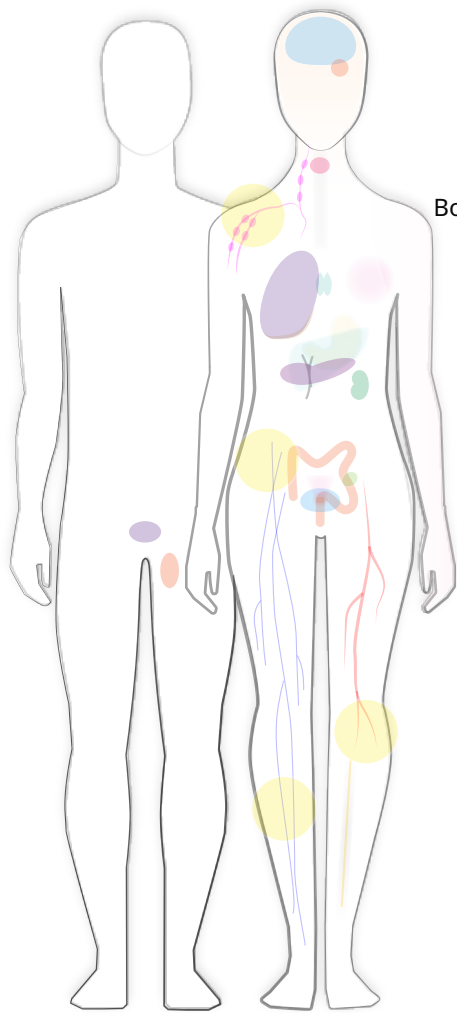
Harmonized Cancer Datasets

A repository and computational platform for cancer researchers who need to understand cancer, its clinical progression, and response to therapy.

Data Portal Summary

[Data Release 43.0 - May 07, 2025](#)





High-quality Datasets From Foundational Cancer Genomic Studies

High-quality datasets spanning cases from cancer genomic studies such as *The Cancer Genomic Atlas (TCGA)*, *Human Cancer Models Initiative (HCMI)*, *Foundation Medicine Inc. (FMI)*, and *Clinical Proteomic Tumor Analysis Consortium (CPTAC)*.

Explore These Studies and More in the Projects App



Access Harmonized Clinical and Genomic Data

Harmonized clinical and genomic data allow for convenient cross-analysis and comparison.

Clinical data, including demographics, diagnosis and treatment information, are standardized across hundreds of distinct properties.

State-of-the-art bioinformatics workflows are employed to align sequencing reads, ranging from whole genome to single-cell RNA, and generate high-level derived data.

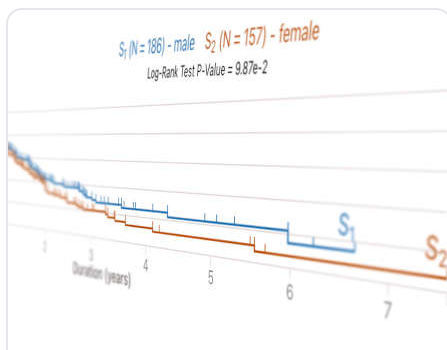
[Learn More About Our Harmonization Process](#)



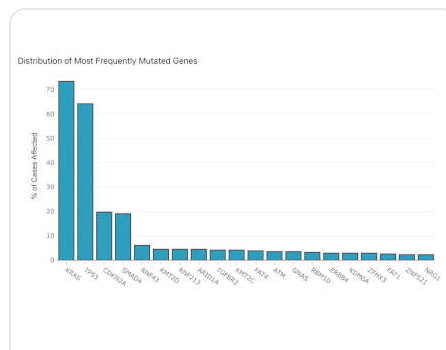
Visualize Genomic Alterations and Clinical Features

Create and refine custom cohorts of cancer patients for in silico studies using a variety of clinical and biospecimen filters in the Cohort Builder.

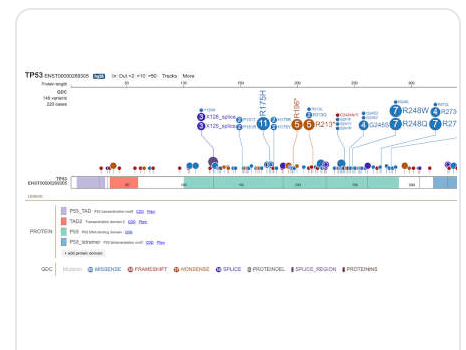
Explore Cohort Builder



Survival Plot



Mutation Frequency



ProteinPaint

Analyze your custom cohorts by applying the GDC's collection of tools for visualizing clinical features, genomic alterations,

and other cancer drivers.

Explore More Tools



Download Primary and Higher-Level Data For Further Analysis

Seamlessly download clinical, biospecimen, and genomic data from your cohorts for further analysis.

Browse through the files associated with your cohorts in the Repository app.

Find the files you want with the filters available, whether you are looking for somatic variants, gene expression data, slide images, or even files generated from a specific workflow.

[Explore Repository](#)

Have questions

about the GDC's data or applications?

Contact our knowledgeable and highly engaged team of specialists for help with the data and the many features

National Cancer Institute at the National Institutes of Health

UI v2.17.6 @ dae0d5b5

API v7.10 @ b46d9fe8

Data Release 43.0 - May 07, 2025

APPLICATIONS

Data Portal

Website

API

Data Transfer Tool

Documentation

Data Submission Portal

Publications

MORE INFORMATION

Site Home

Support

Listserv

POLICIES

Accessibility

Disclaimer

FOIA

HHS Vulnerability

Disclosure

U.S. Department of Health and Human Services | National Institutes of Health
National Cancer Institute | USA.gov

NIH... Turning Discovery Into Health ®