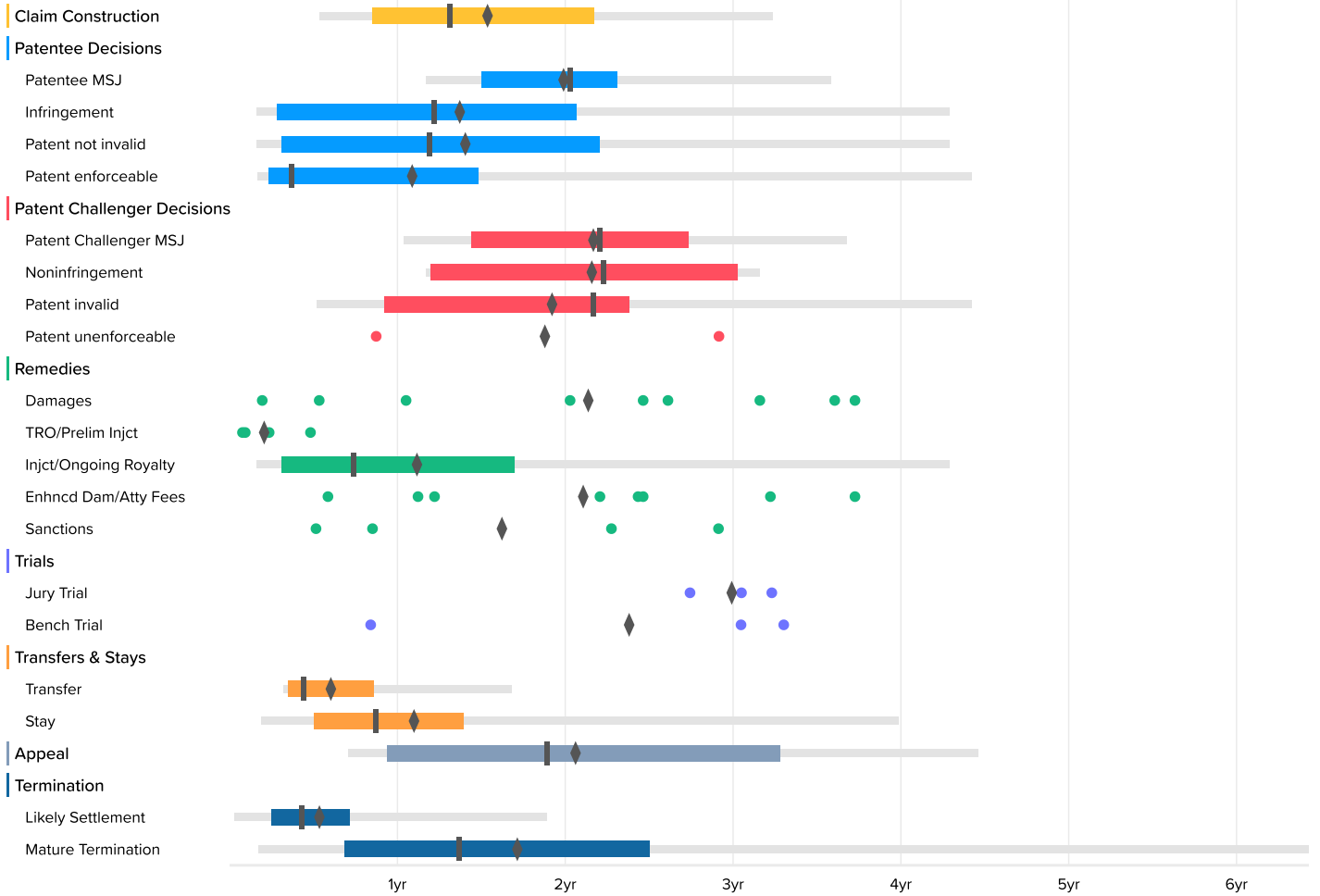


Time to Milestones

Courts: Arizona District (all districts) Case Filing Date: On or After Jan. 1st, 2008

U.S. District Courts (392 cases)



U.S. District Courts

| | Occurrences | Minimum | 2nd Percentile | First Quartile | Median | Third Quartile | 98th Percentile | Maximum | Average |
|-----------------------|-------------|---------|----------------|----------------|--------|----------------|-----------------|---------|---------|
| Claim Construction | 31 | 1.8 | 6.4 | 10.2 | 15.7 | 26.0 | 38.8 | 38.8 | 18.6 |
| Patentee MSJ | 13 | 10.1 | 14.0 | 18.0 | 24.3 | 27.7 | 42.9 | 42.9 | 24.0 |
| Infringement | 26 | 1.1 | 2.0 | 3.4 | 14.6 | 24.7 | 51.4 | 51.4 | 16.6 |
| Patent not invalid | 29 | 1.1 | 2.0 | 3.7 | 14.3 | 26.4 | 51.4 | 51.4 | 17.0 |
| Patent enforceable | 16 | 1.1 | 2.0 | 2.8 | 4.4 | 17.7 | 53.0 | 53.0 | 13.2 |
| Patent Challenger MSJ | 22 | 10.1 | 12.4 | 17.2 | 26.4 | 32.7 | 44.0 | 44.0 | 26.1 |
| Noninfringement | 10 | 10.1 | 14.0 | 14.4 | 26.7 | 36.3 | 37.8 | 37.8 | 26.0 |
| Patent invalid | 15 | 4.4 | 6.2 | 11.0 | 26.0 | 28.5 | 53.0 | 53.0 | 23.2 |
| Patent unenforceable | 2 | 10.5 | | | 22.7 | | | 34.9 | 22.7 |
| Damages | 9 | 2.3 | | | 29.5 | | | 44.6 | 25.8 |
| TRO/Prelim Injct | 4 | 0.9 | | | 2.0 | | | 5.8 | 2.7 |
| Injct/Ongoing Royalty | 34 | 1.1 | 2.0 | 3.7 | 8.8 | 20.3 | 51.4 | 51.4 | 13.6 |
| Enhncd Dam/Atty Fees | 8 | 7.0 | | | 27.8 | | | 44.6 | 25.4 |
| Sanctions | 4 | 6.2 | | | 18.7 | | | 34.9 | 19.6 |
| Jury Trial | 3 | 32.9 | | | 36.5 | | | 38.7 | 36.0 |
| Bench Trial | 3 | 10.1 | | | 36.5 | | | 39.5 | 28.7 |
| Transfer | 19 | 1.9 | 3.9 | 4.2 | 5.3 | 10.3 | 20.1 | 20.1 | 7.4 |
| Stay | 60 | 1.4 | 2.2 | 6.0 | 10.4 | 16.7 | 47.7 | 54.8 | 13.3 |
| Appeal | 22 | 4.6 | 8.5 | 11.3 | 22.6 | 39.3 | 53.4 | 53.4 | 24.9 |
| Likely Settlement | 246 | 0.0 | 0.4 | 3.0 | 5.2 | 8.5 | 22.7 | 33.5 | 6.6 |
| Mature Termination | 129 | 1.1 | 2.1 | 8.2 | 16.4 | 30.0 | 77.0 | 84.0 | 20.7 |