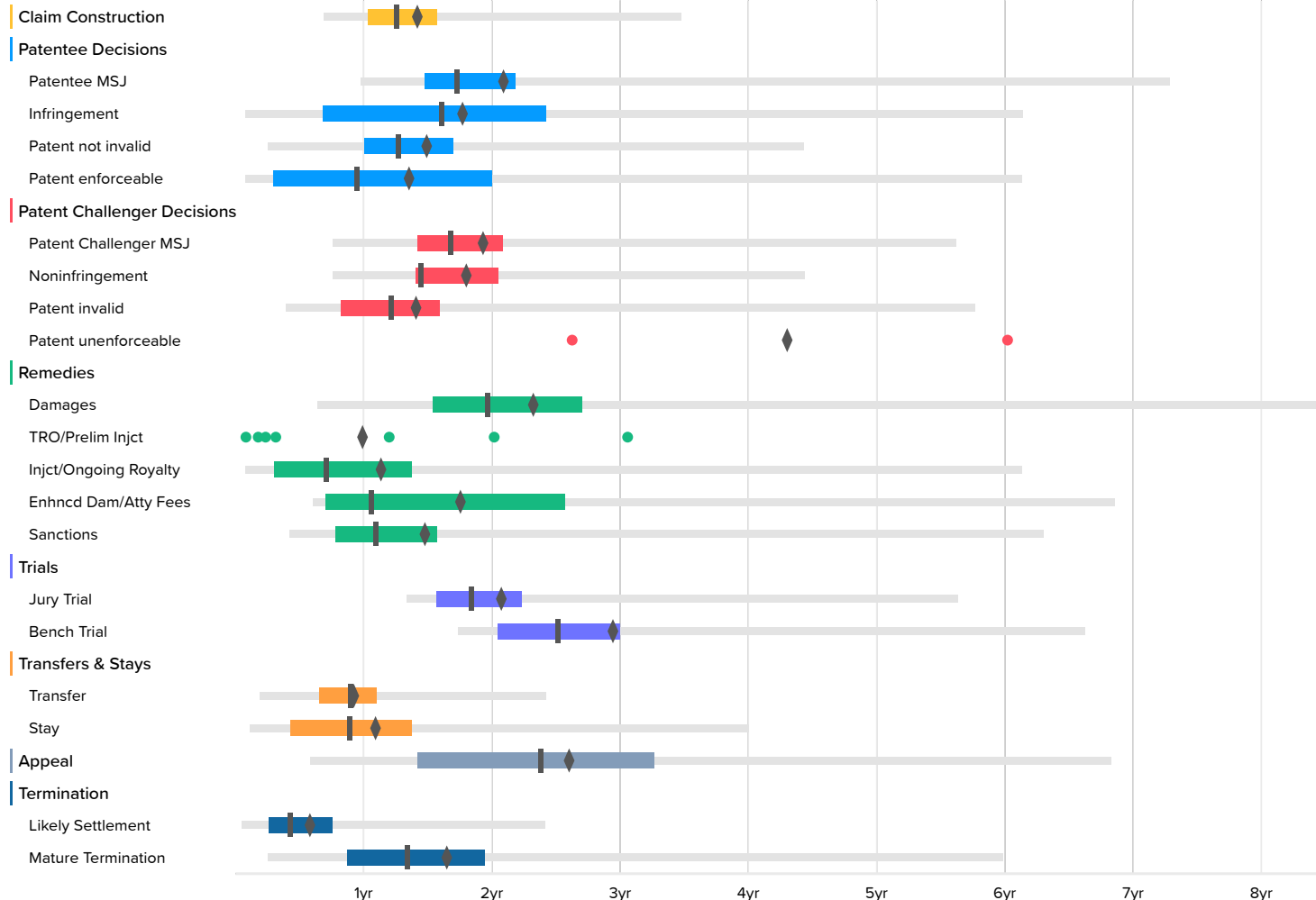


Time to Milestones

[VIEW IN BROWSER](#)

Judges: Rodney Gilstrap Case Filing Date: On or After Jan. 1st, 2008

U.S. District Courts (9476 cases)



U.S. District Courts

	Occurrences	Minimum	2nd Percentile	First Quartile	Median	Third Quartile	98th Percentile	Maximum	Average
Claim Construction	553	0.4	8.3	12.3	15.0	18.8	41.7	86.8	17.2
Patentee MSJ	78	3.1	11.7	17.7	20.7	26.2	87.2	87.2	25.3
Infringement	140		1.0	8.2	19.3	29.0	73.5	107.2	21.5
Patent not invalid	554		3.0	12.1	15.2	20.4	53.1	107.2	18.1
Patent enforceable	67	0.7	1.0	3.5	11.3	23.9	73.5	101.7	16.5
Patent Challenger MSJ	214	4.9	9.1	17.0	20.1	24.9	67.3	106.5	23.4
Noninfringement	250	-1.5	9.1	16.9	17.3	24.5	53.1	87.0	21.8
Patent invalid	264		4.7	9.8	14.5	19.1	69.0	106.3	17.1
Patent unenforceable	2	31.4			51.8			72.1	51.8
Damages	93	0.2	7.6	18.4	23.5	32.4	101.7	107.2	28.1
TRO/Prelim Injct	7	1.0			3.8			36.6	12.1
Injct/Ongoing Royalty	89	0.7	1.0	3.6	8.5	16.5	73.5	107.2	13.8
Enhncd Dam/Atty Fees	62	2.3	7.2	8.4	12.7	30.8	82.2	92.2	21.3
Sanctions	16	2.2	5.0	9.3	13.1	18.8	75.4	75.4	17.9
Jury Trial	113	7.3	16.0	18.7	22.0	26.8	67.5	87.0	25.1
Bench Trial	25	19.6	20.8	24.5	30.1	35.9	79.3	79.3	35.5
Transfer	495		2.3	7.9	10.8	13.2	29.0	44.2	11.3
Stay	914	0.0	1.3	5.2	10.7	16.4	48.0	105.4	13.3
Appeal	156	1.2	7.0	17.0	28.5	39.1	81.8	168.0	31.4
Likely Settlement	6896		0.6	3.1	5.1	9.0	29.0	90.9	7.2
Mature Termination	1743	0.2	3.0	10.5	16.0	23.3	71.7	120.9	20.0