

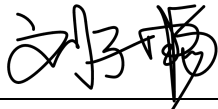
# CERTIFICATE OF TRANSLATION

I, **JESSIE ZICHANG LIU**, a certified Mandarin interpreter and translator by the  
**Judicial Council of California (Certification Number: 313563)**, am competent to translate  
from Chinese/Mandarin into English, and certify that the translation of

Utility Model Patent Specification (ZL Patent No. 95204396.3)

is true and accurate to the best of my abilities.

Additionally, as a native speaker of Mandarin Chinese, I transcribed, to the best of my  
knowledge and ability, the Mandarin-speaking portions of the video clips.



\_\_\_\_\_  
(signature of translator)

**JESSIE ZICHANG LIU**

\_\_\_\_\_  
(typed/printed name of translator)

4/15/2025

[19] China National Intellectual Property Administration

[11] Grant Publication No. : CN 2235130Y



## [12] Utility Model Patent Specification

[21] ZL Patent No. : 95204396.3

[51] Int. Cl<sup>6</sup>

[45] Grant Publication Date: 9/11/1996

G03B 15/03

[22] Application Date: 3/19/95

[21] Application No. : 95204396.3

[24] Certificate Issuance Date: 7/5/96

[73] Patentee: LUO, Yuan

Address: Technical Department,  
Luling Coal Mine,  
Su County,  
Anhui Province, 234113

[72] Inventor: LUO, Yuan

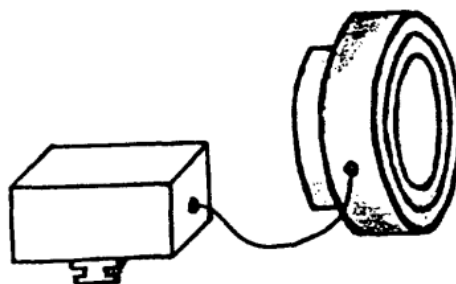
Claims 1 Page; Description 2 Page; Drawings 1 Page

### [54] Name of the Invention

Shadowless flash

### [57] Summary

This utility model discloses a shadowless flash, which consists of a power supply unit and a ring flash. The axis of the ring flash is aligned with the axis of the camera lens, thereby solving the problem commonly found in traditional flash photography where shadows are cast on the film, and as a result, producing more aesthetically pleasing photographs.



(BJ) No. 1452

# Claims

---

1. A shadowless flash comprising a power supply (5), connecting wires (4), clips (6), a toroidal lamp tube (2), a circular reflector (3), and a housing for the ring flash (1), characterized in that the power supply (5) is connected to the ring flash (1) via the connecting wires (4), and the circular reflector (3) and toroidal lamp tube (2) are mounted inside the housing of the ring flash (1) by means of clips (6).

2. The shadowless flash according to claim 1, characterized in that it comprises a housing for the ring flash (1).

3. The shadowless flash according to claim 1, characterized in that it comprises a toroidal lamp tube (2).

4. The shadowless flash according to claim 1, characterized in that it comprises a circular reflector (3).

5. The shadowless flash according to claim 1, characterized in that it comprises an independent power supply (5).

# Description

---

## Shadowless Flash

The utility model relates to an improved type of flash, which consists of a ring flash and a power supply unit, designed to prevent the occurrence of shadows during photography.

Conventional flash units are typically mounted above the camera body. Since the axis of the flash is angled relative to the axis of the camera lens, this often results in shadow formation on the film, thereby compromising the overall aesthetic quality of the photograph.

The objective of the utility model is to provide a flash device in which the axis of the flash aligns with the axis of the camera lens, thereby eliminating shadows on the film.

This utility model achieves the objective as follows: A power supply and charging unit is inserted into the flash socket above the camera. A wire connects the ring flash to the power supply unit. The ring flash is friction-fitted onto the camera lens after the lens cap is removed, such that the axis of the ring flash coincides with the axis of the camera lens.

Further details of the shadowless flash will be described below in conjunction with the drawings.

Figure 1 is a front view of the shadowless flash.

Figure 2 is a cross-sectional view along line A–A in Figure 1.

Referring to Figures 1 and 2, the power supply unit (5) is mounted on the flash socket above the camera. A connecting wire (4) links the power supply (5) to the ring flash (1) to form a circuit. Clips (6) are used to secure a toroidal lamp tube (2) and a circular reflector (3) inside the ring flash housing (1), thereby forming an integrated structure.

# Drawings

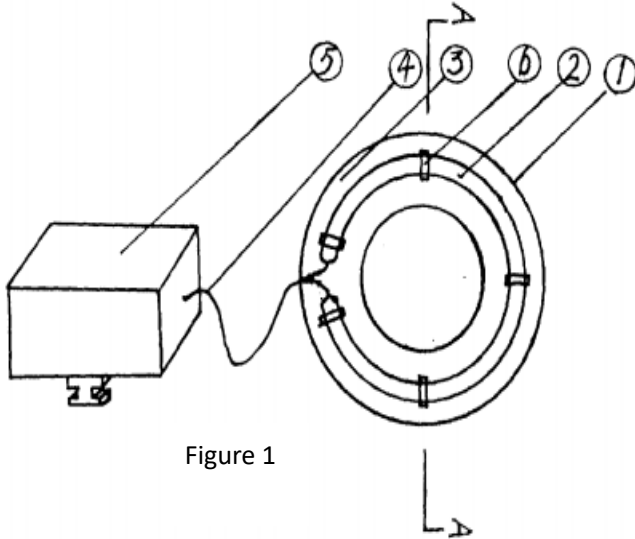


Figure 1

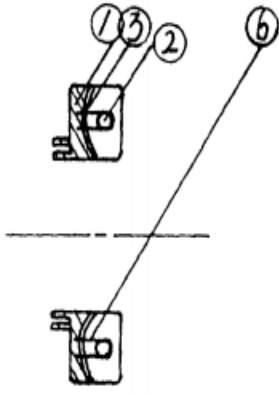


Figure 2 (A-A)