



(19) **United States**

(12) **Patent Application Publication**
Spurgat et al.

(10) **Pub. No.: US 2002/0174243 A1**

(43) **Pub. Date: Nov. 21, 2002**

(54) **PROXIMITY SYNCHRONIZING AUDIO
PLAYBACK DEVICE**

Publication Classification

(75) Inventors: **Jeffrey Jonathan Spurgat**, Madison,
WI (US); **Stephen Christopher
Gladwin**, Chicago, IL (US); **Hoyet H.
Andrews III**, San Antonio, TX (US)

(51) **Int. Cl.⁷** **G06F 15/16**
(52) **U.S. Cl.** **709/231**

(57) **ABSTRACT**

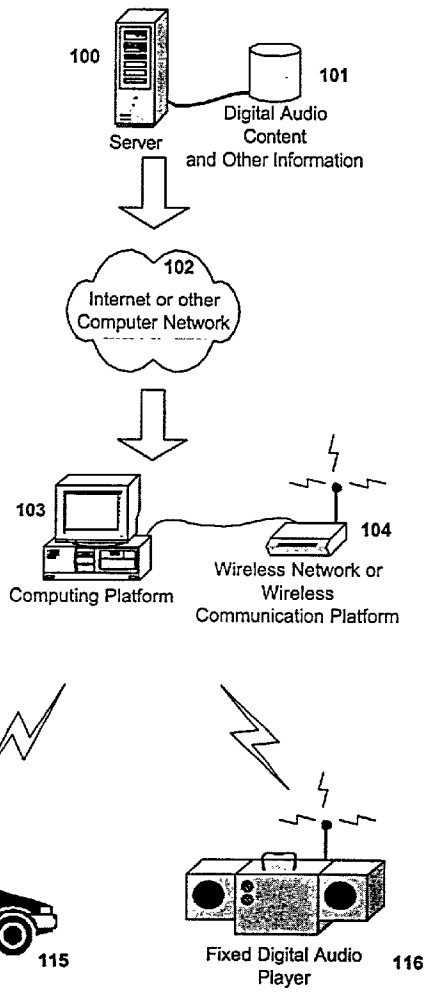
A digital audio playback device that includes a wireless communication link to enable it to interact and synchronize with computing platforms as well as other mobile digital audio players and fixed digital audio players. A digital audio playback device is configured such that the computing platform may automatically or upon user request copy, add or remove digital audio content or other information, such as playlists. In addition, digital content on the digital audio playback device can be synchronized with a computing platform. In one embodiment of the invention, the digital audio playback device is configured to enable wireless communication among other digital playback devices and/or a computing platform to allow synchronization and control.

Correspondence Address:
John S. Paniaguas
KATTEN MUCHIN ZAVIS
Suite 1600
525 West Monroe Street
Chicago, IL 60661 (US)

(73) Assignee: **FullAudio Corporation**

(21) Appl. No.: **09/859,057**

(22) Filed: **May 16, 2001**



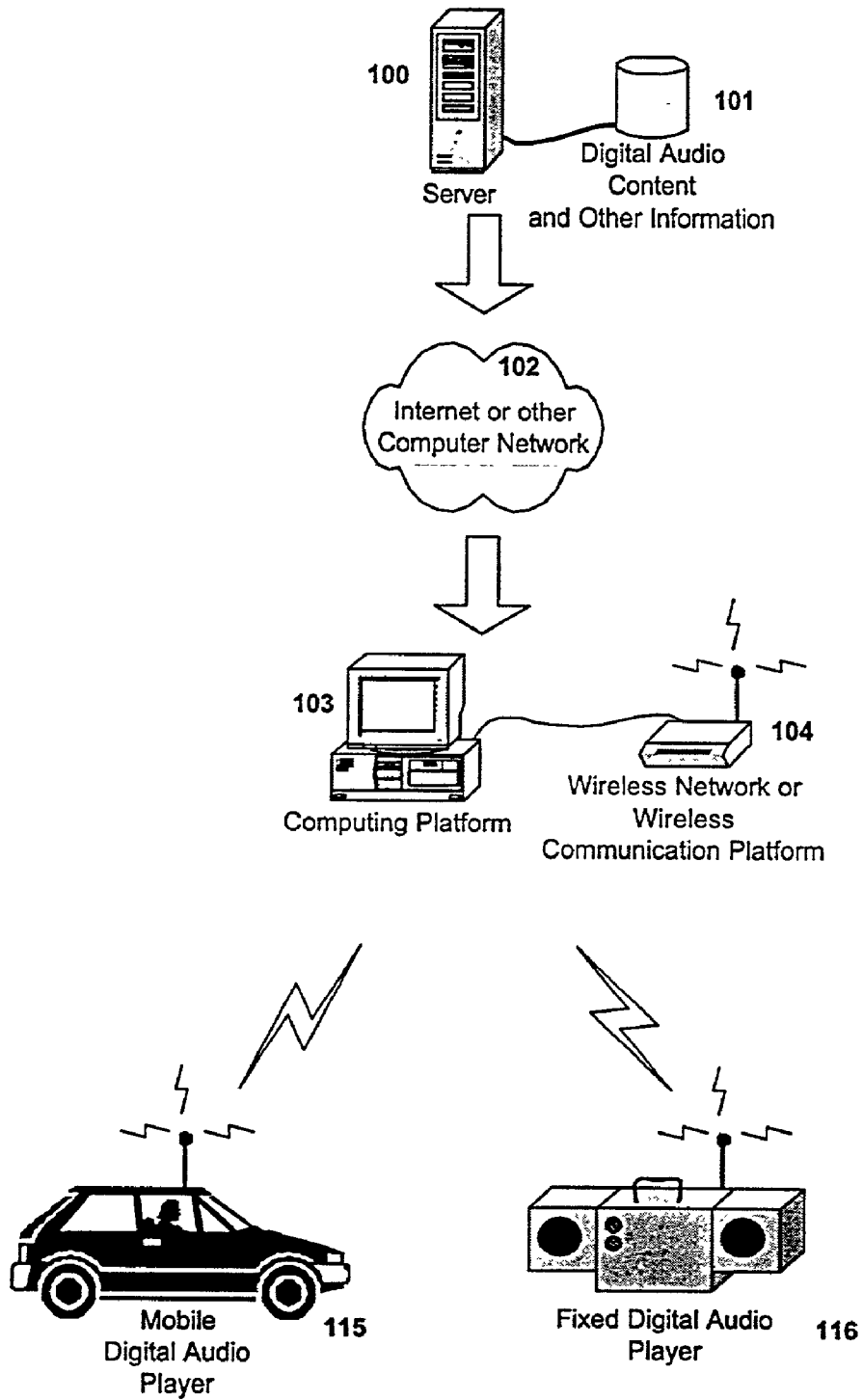


Figure 1

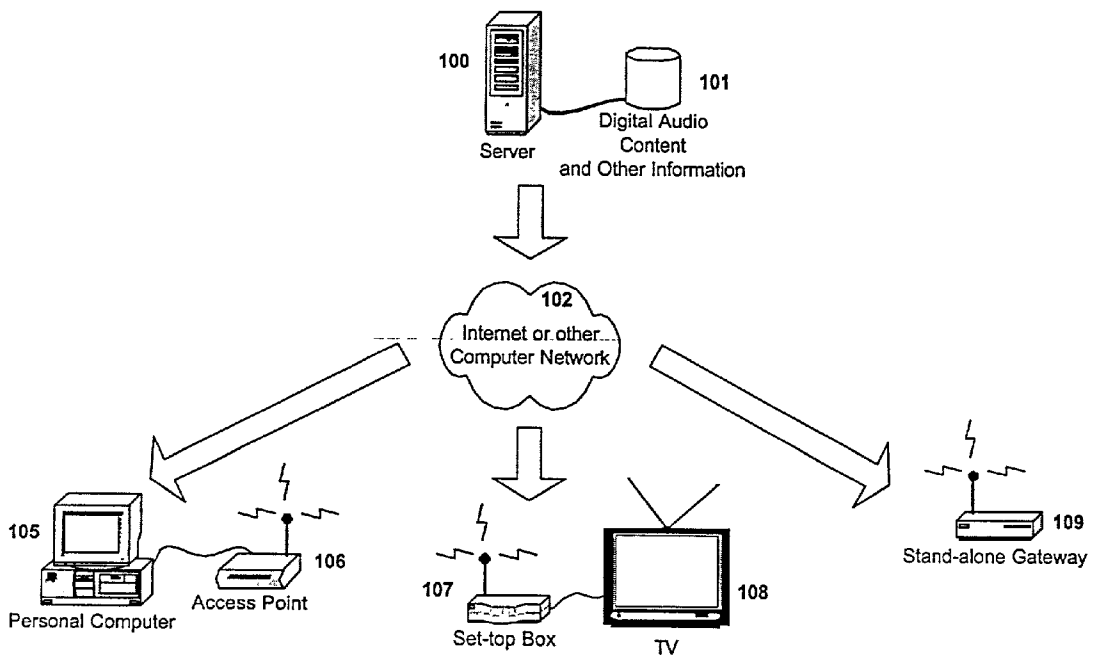


Figure 2

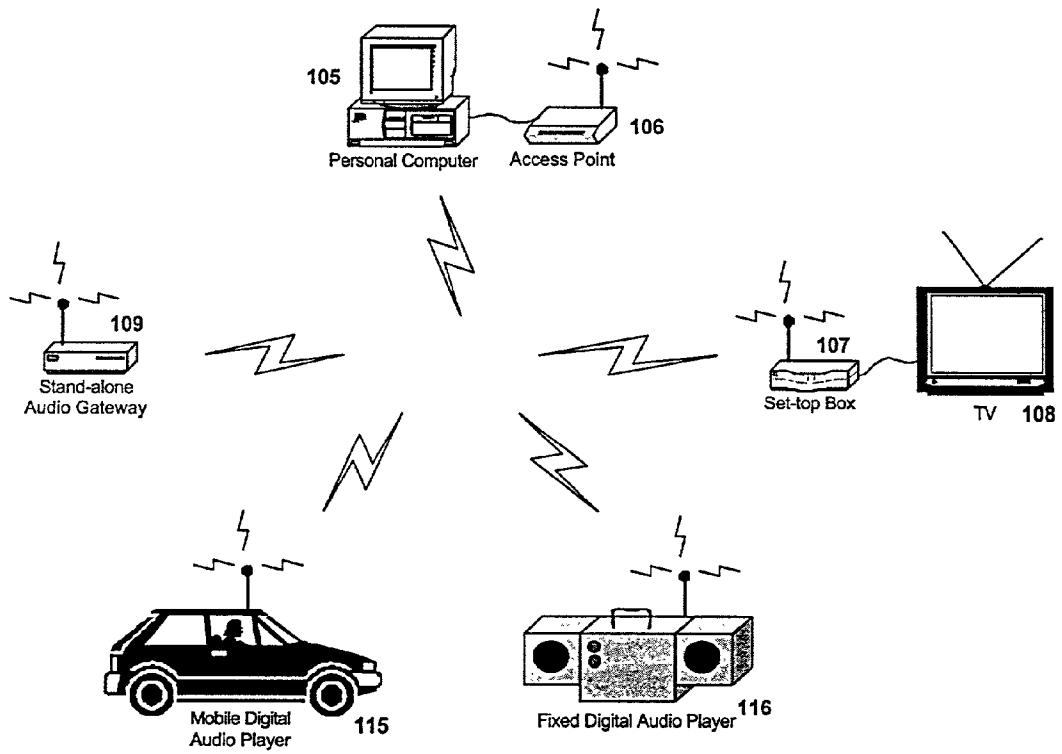


Figure 3

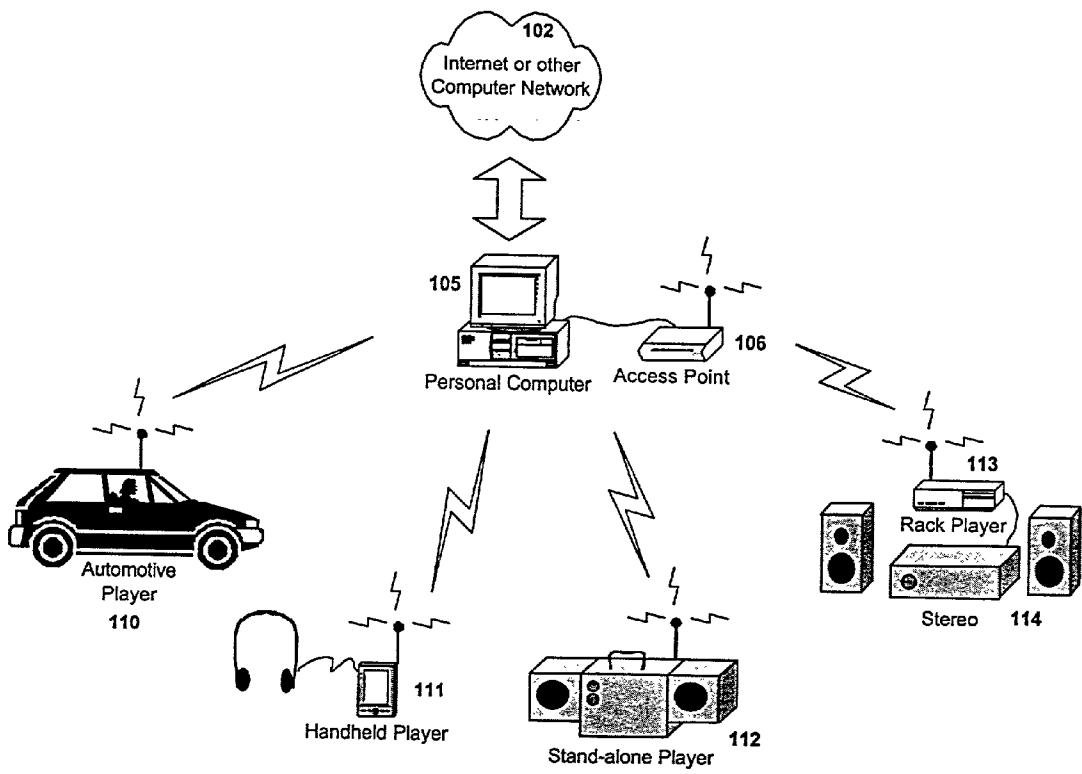


Figure 4

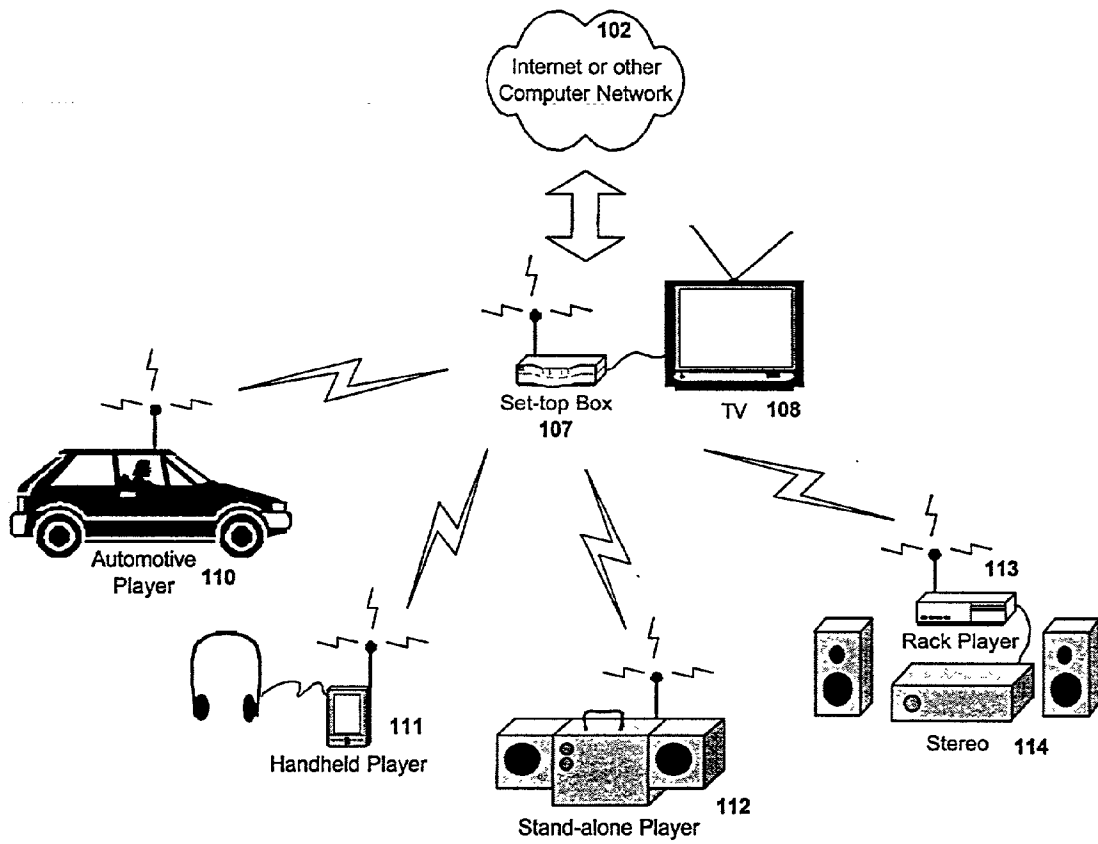


Figure 5

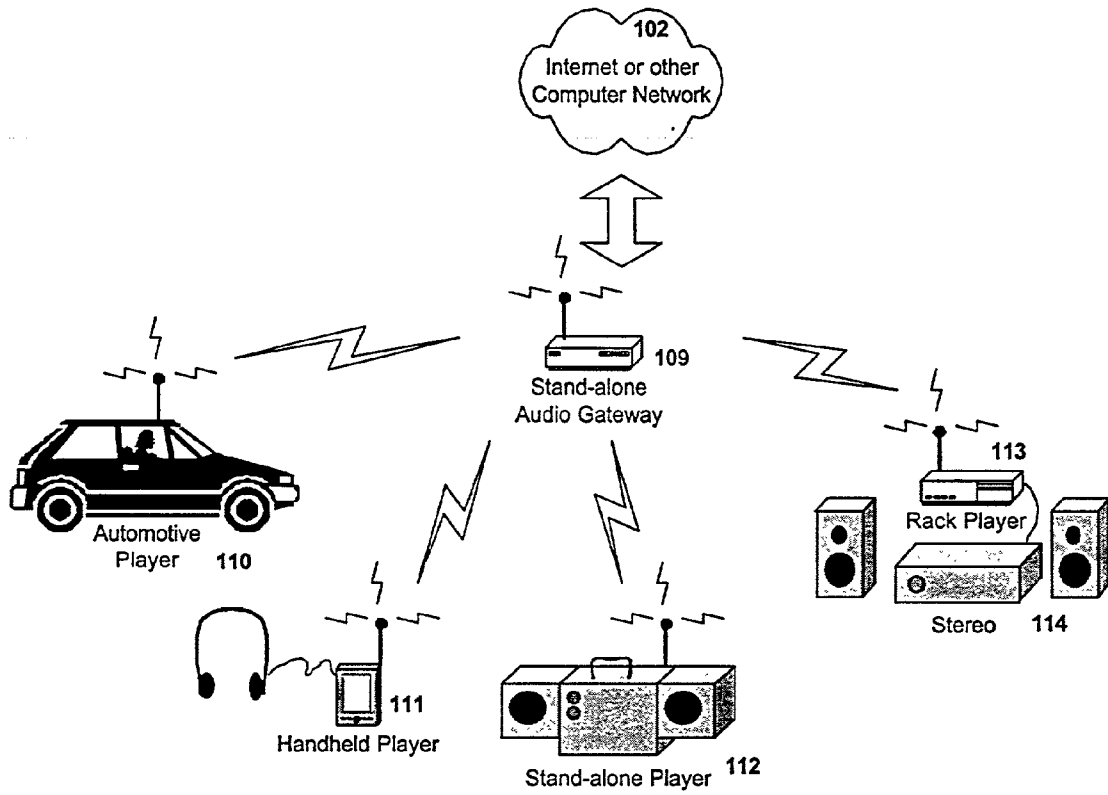


Figure 6

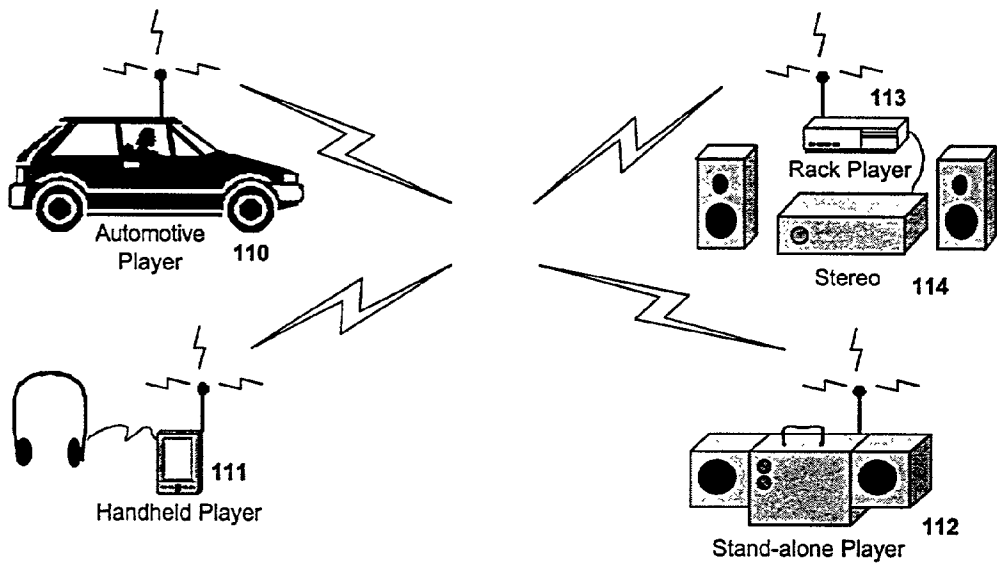


Figure 7

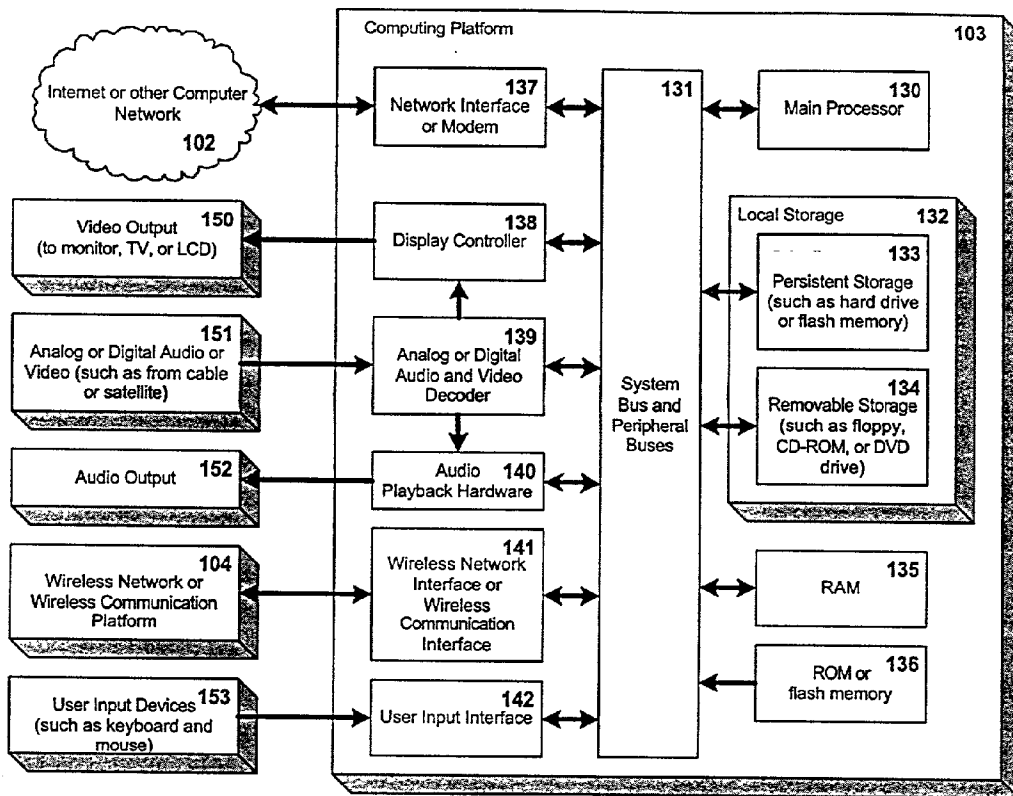


Figure 8

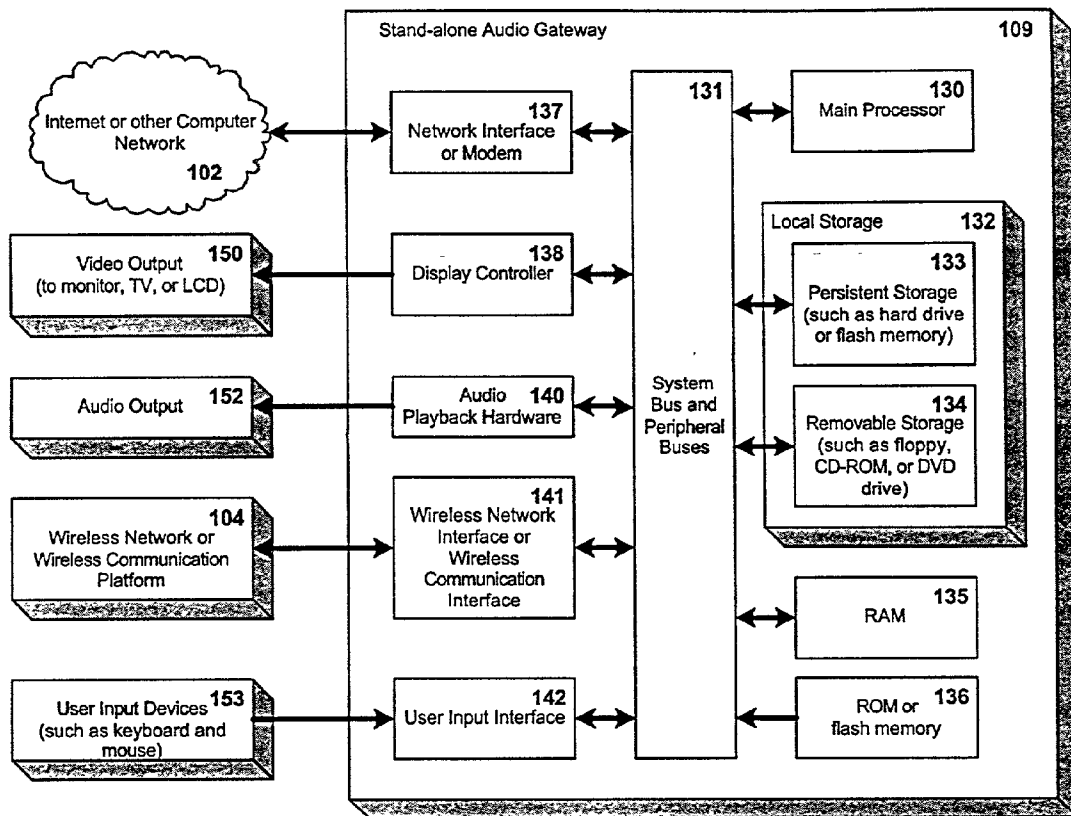


Figure 9

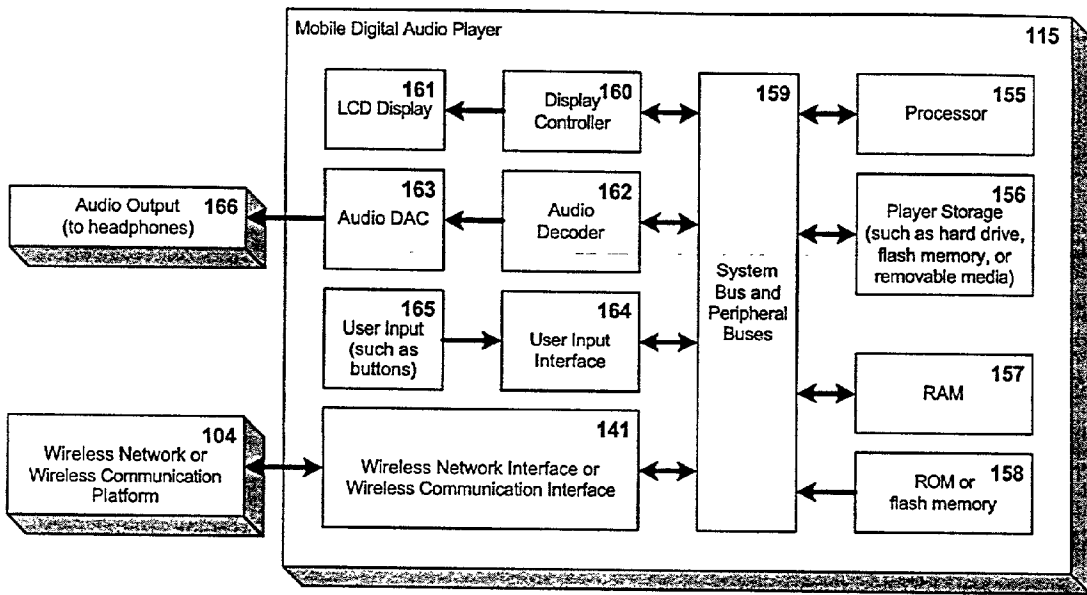


Figure 10

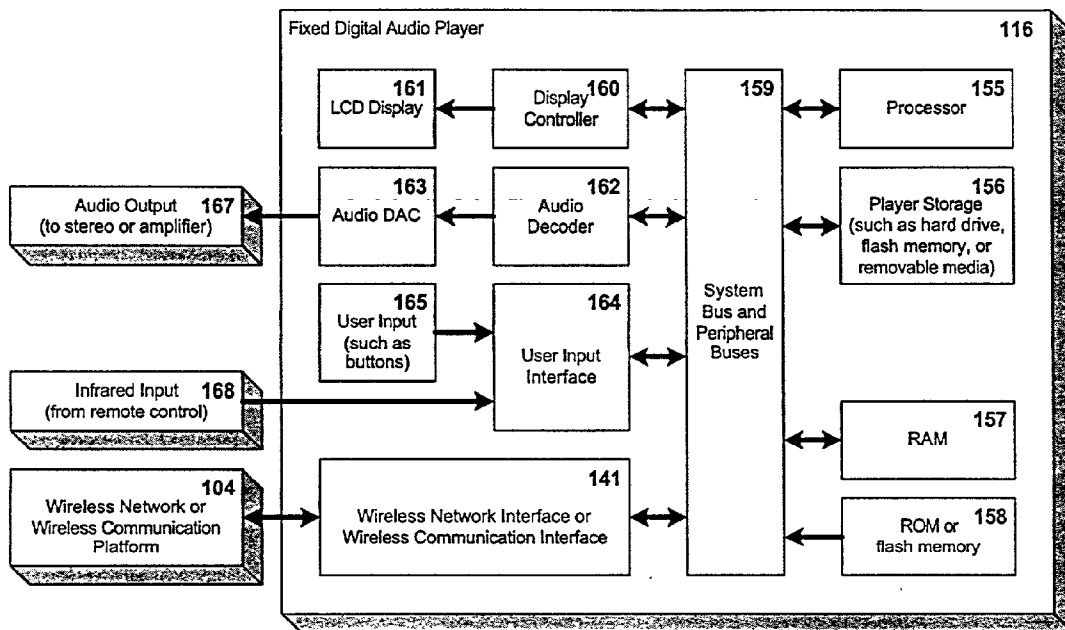


Figure 11

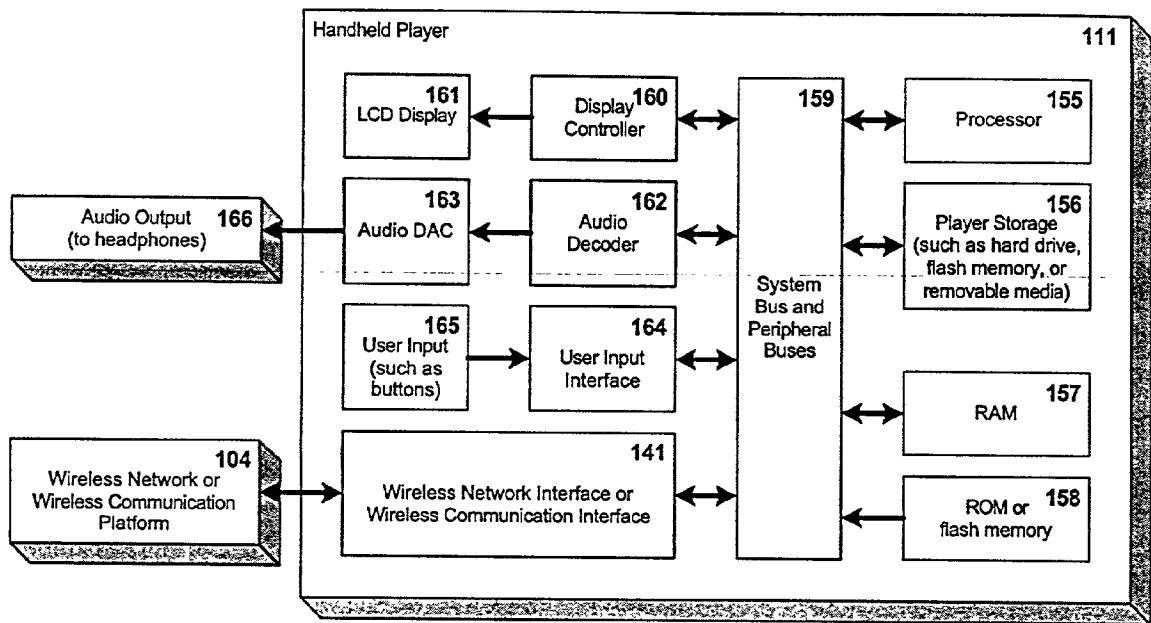


Figure 12

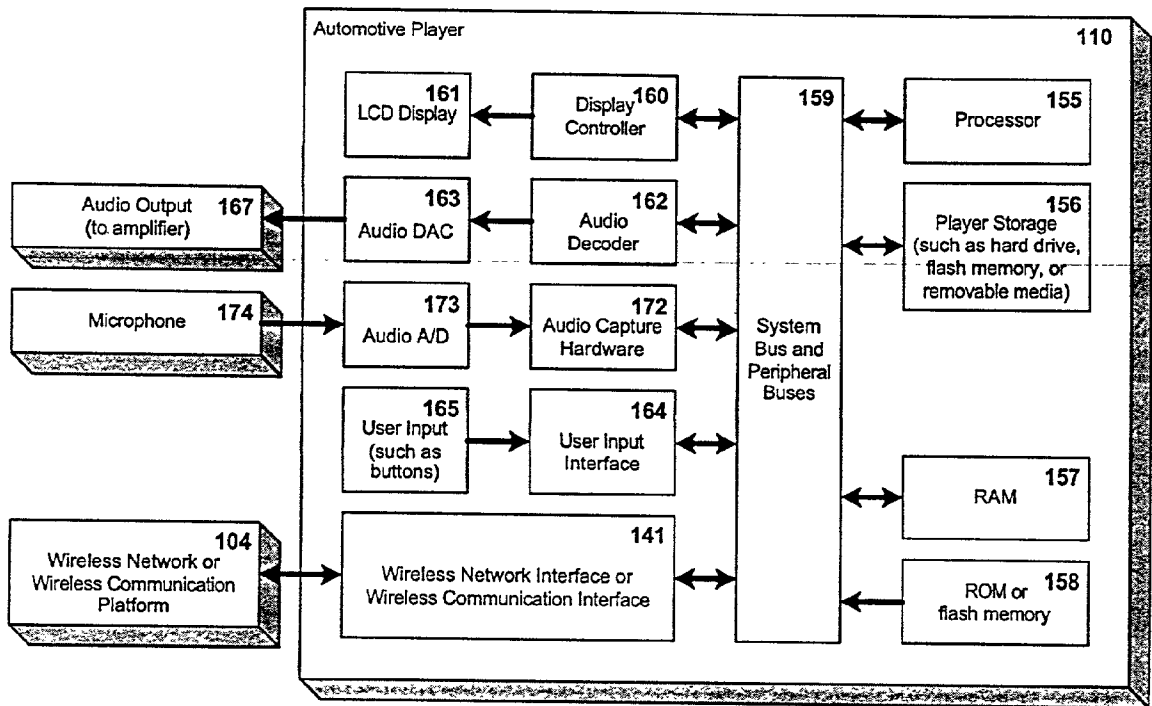


Figure 13

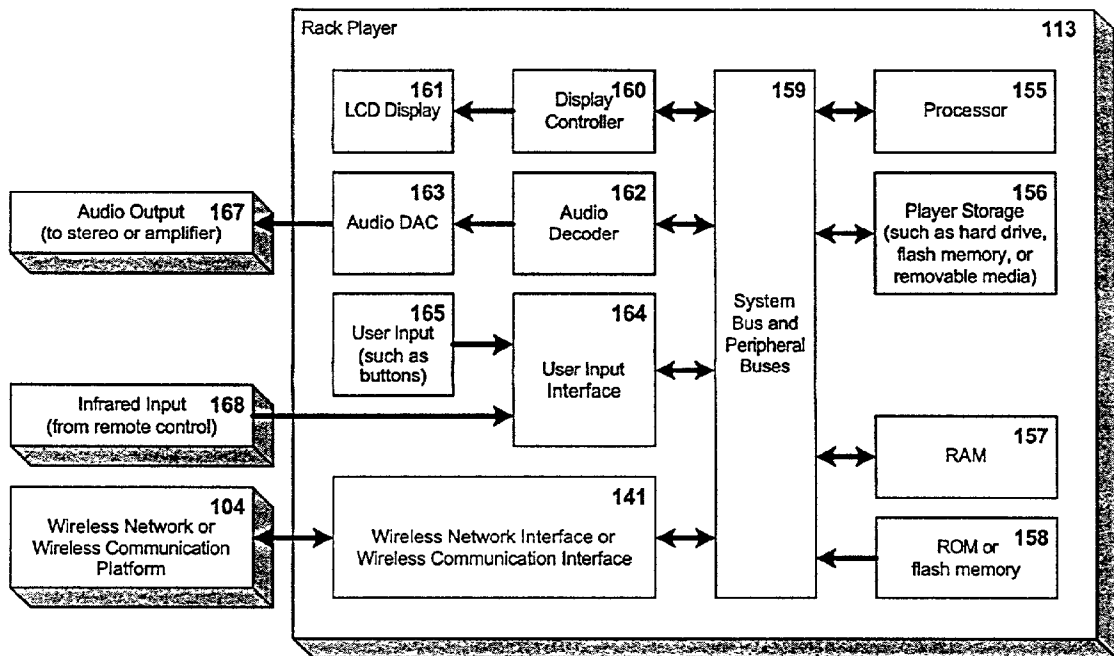


Figure 14

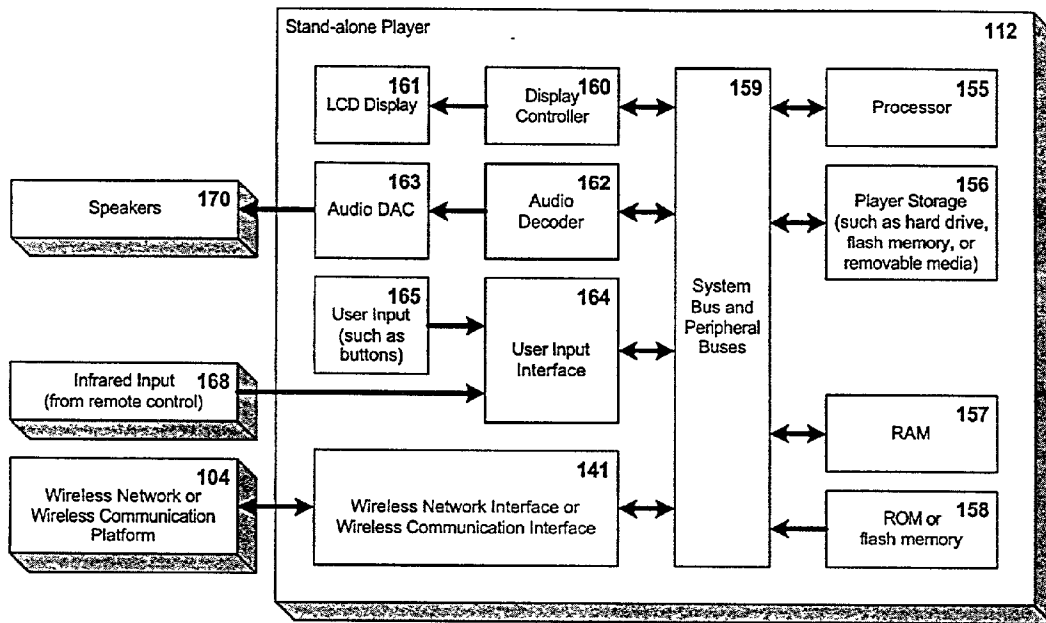


Figure 15

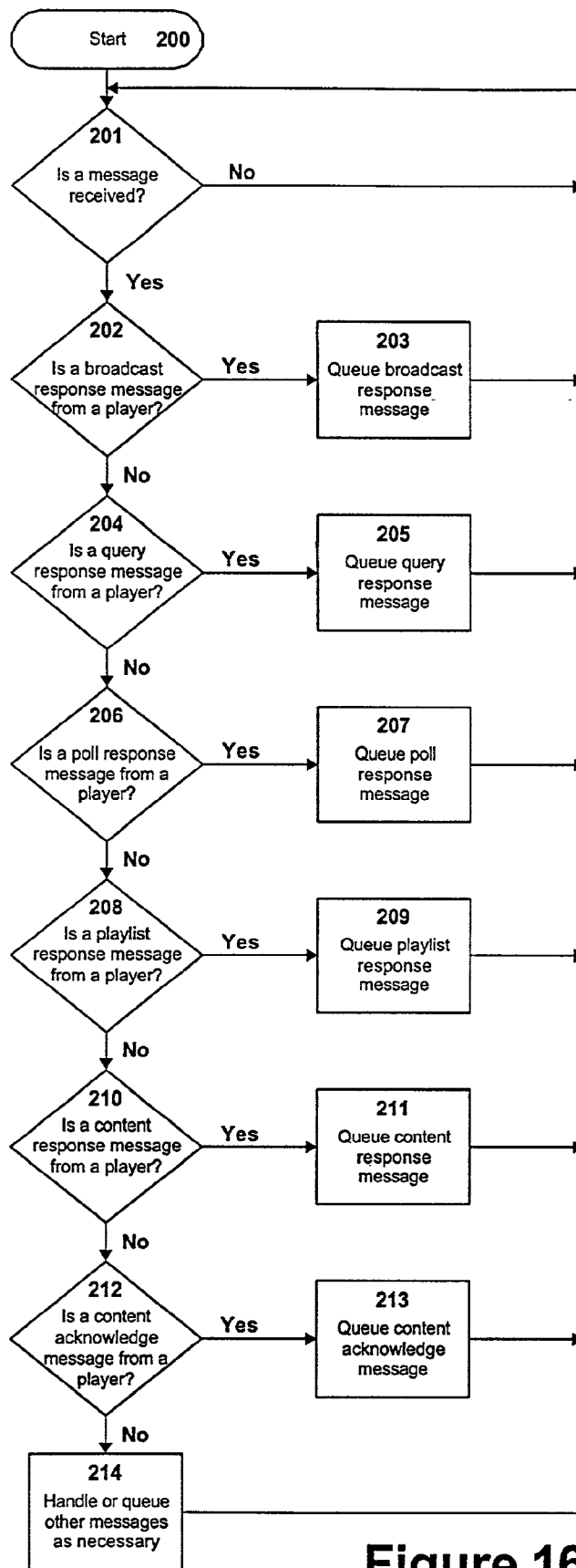


Figure 16

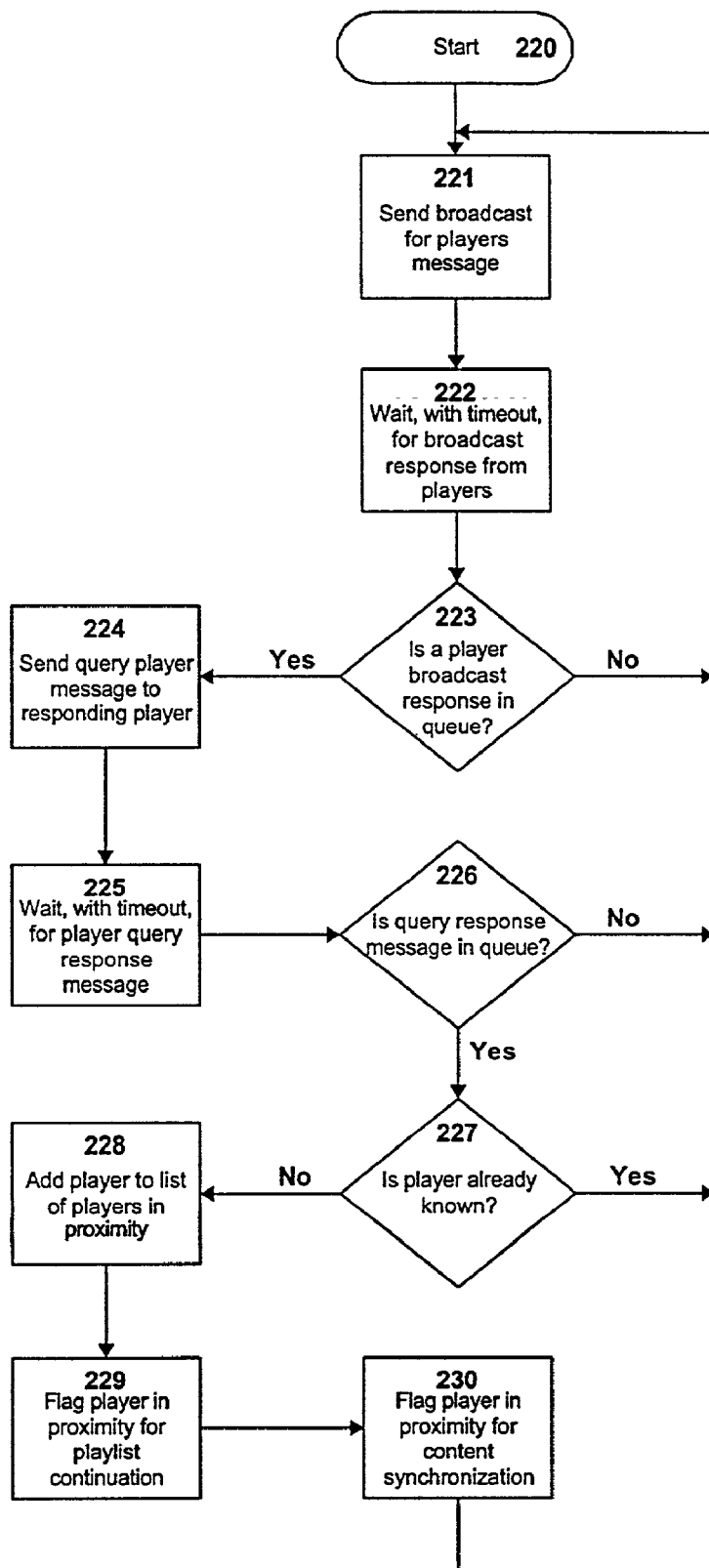


Figure 17

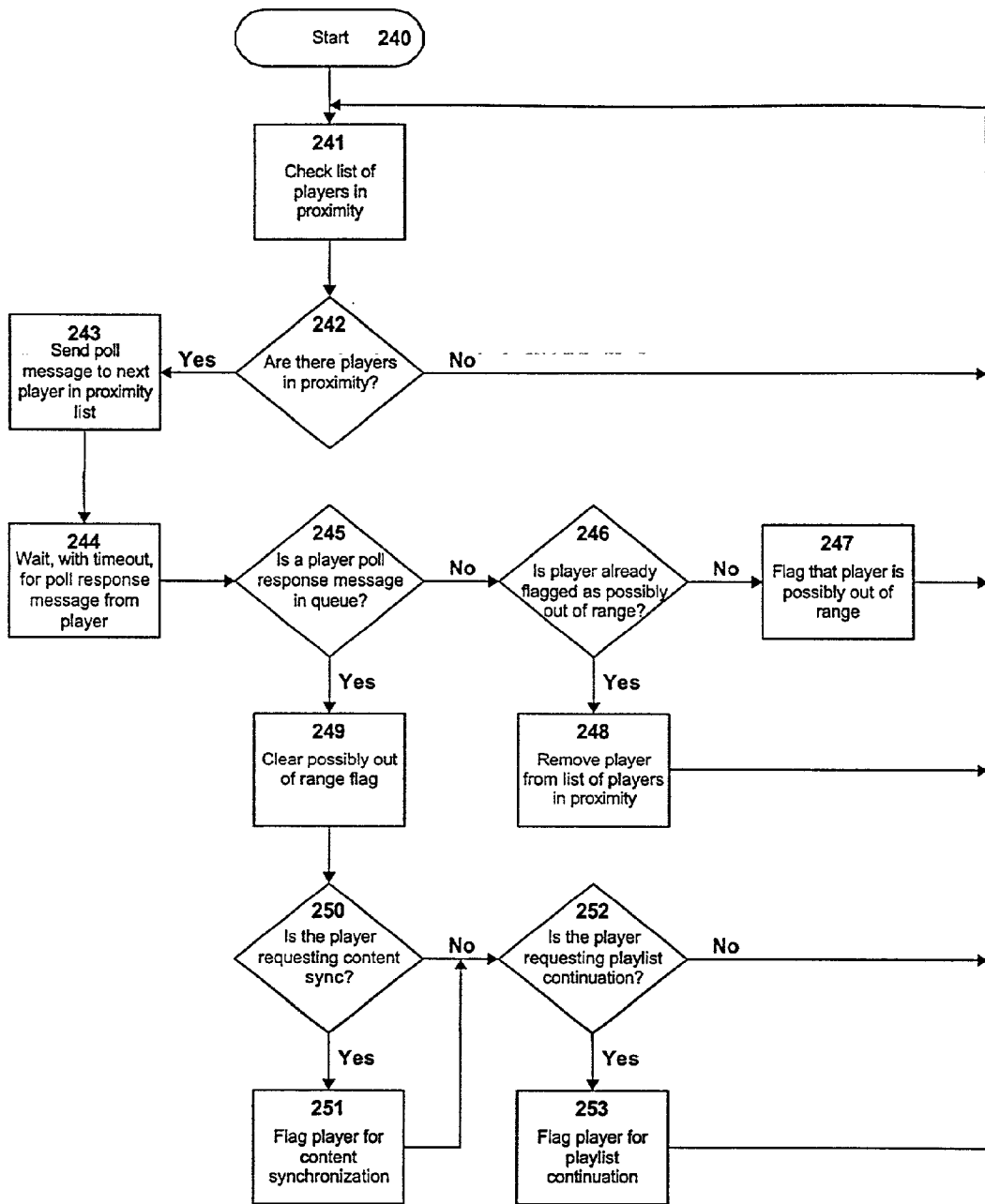


Figure 18

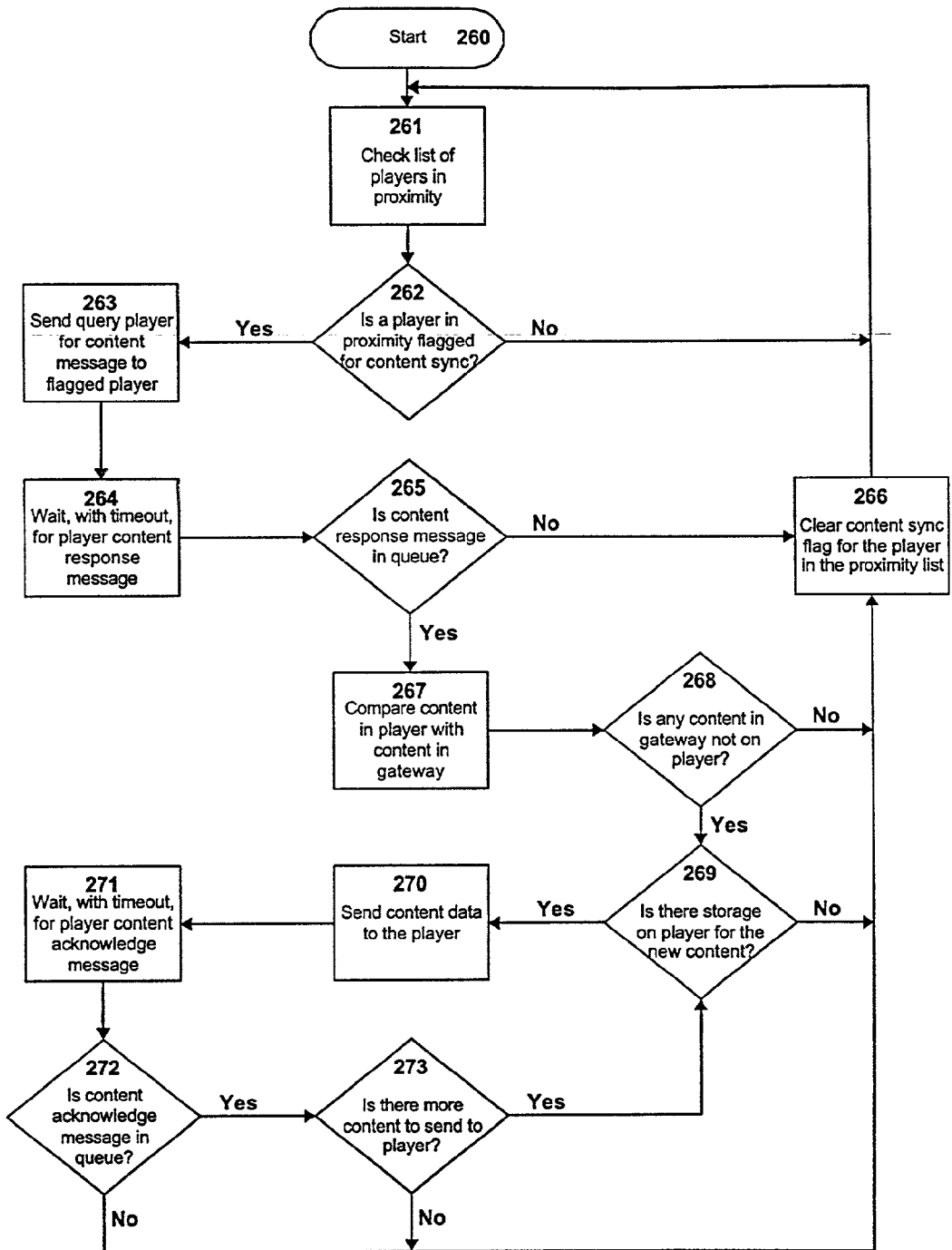


Figure 19

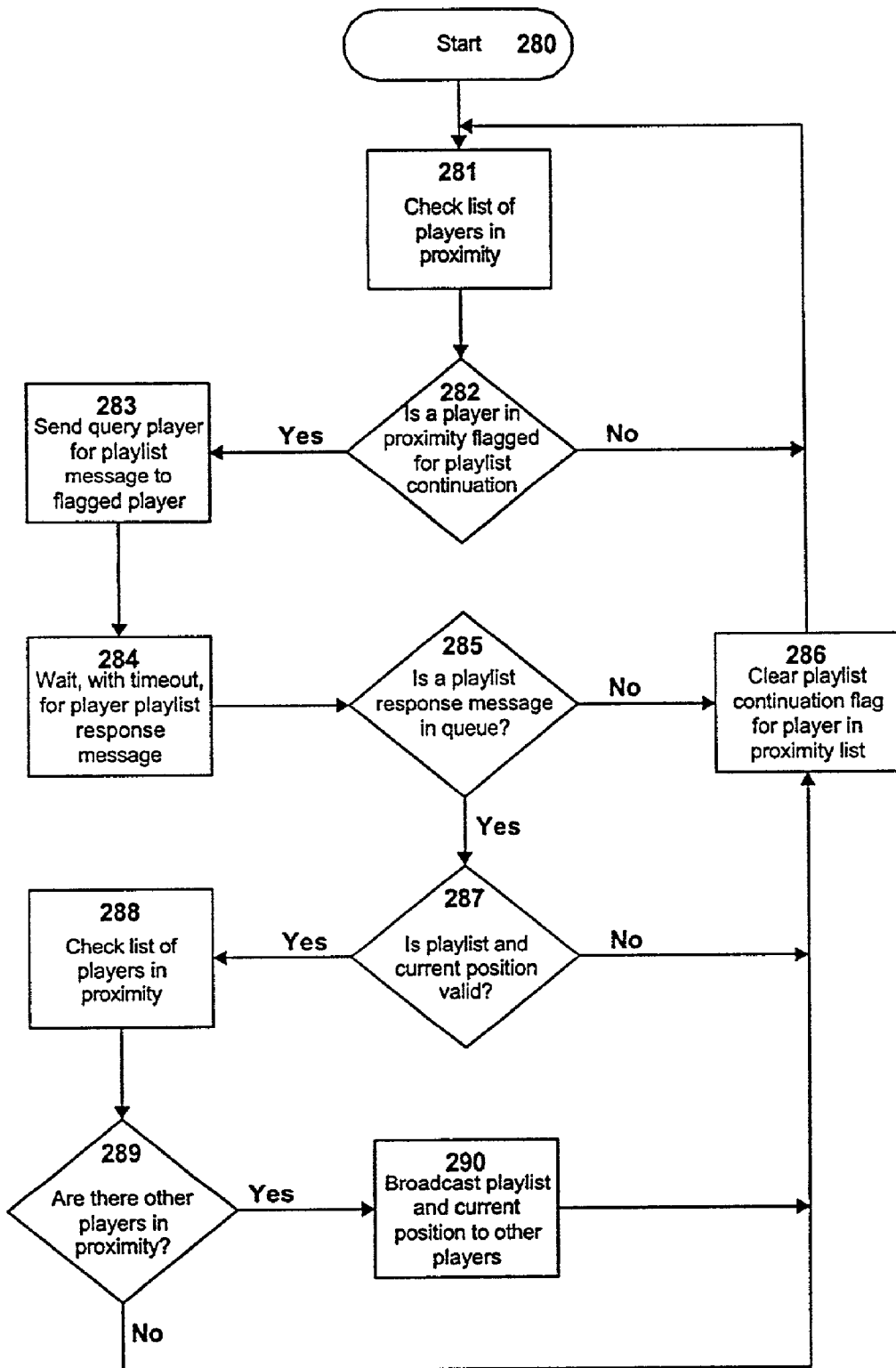


Figure 20

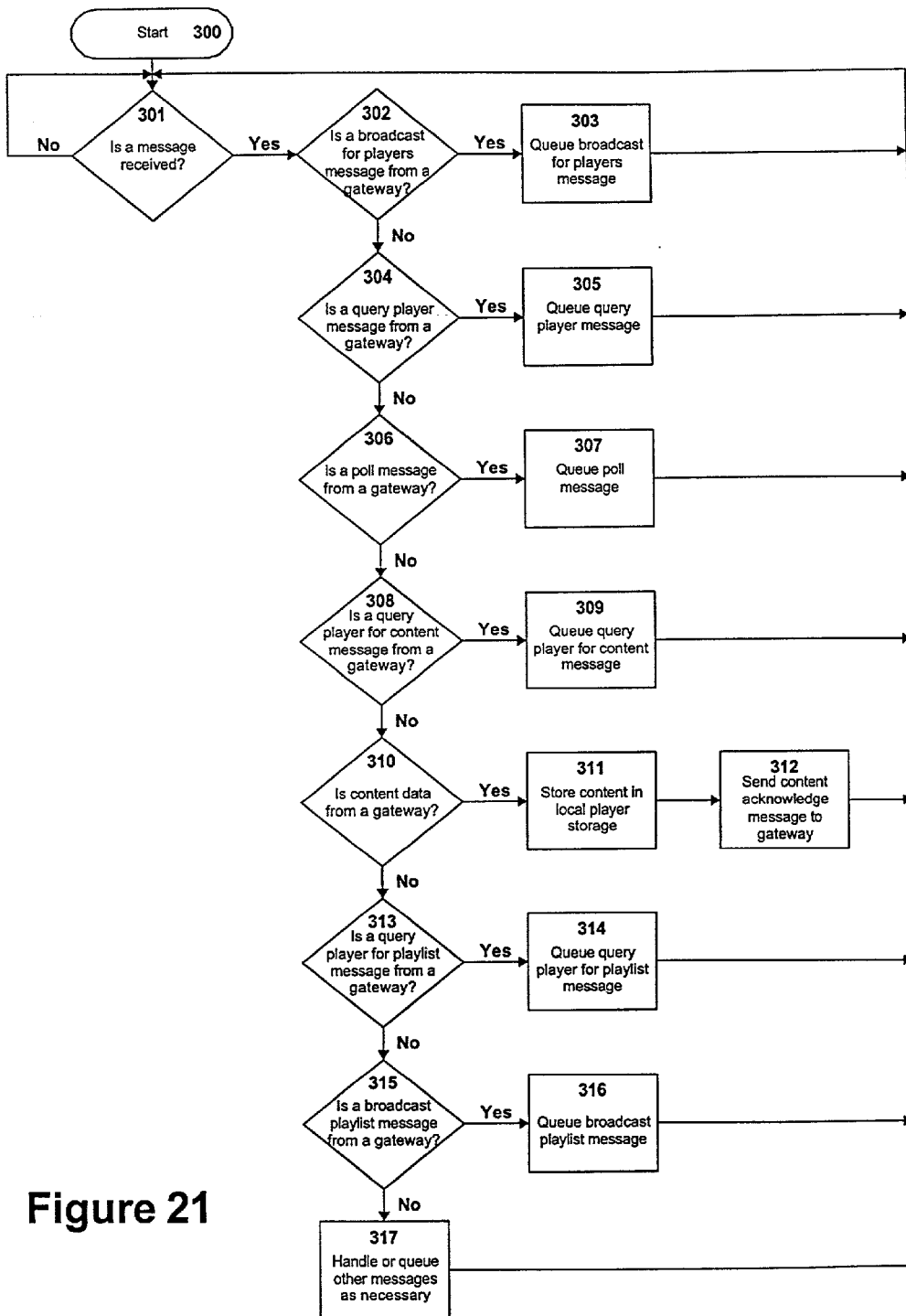


Figure 21

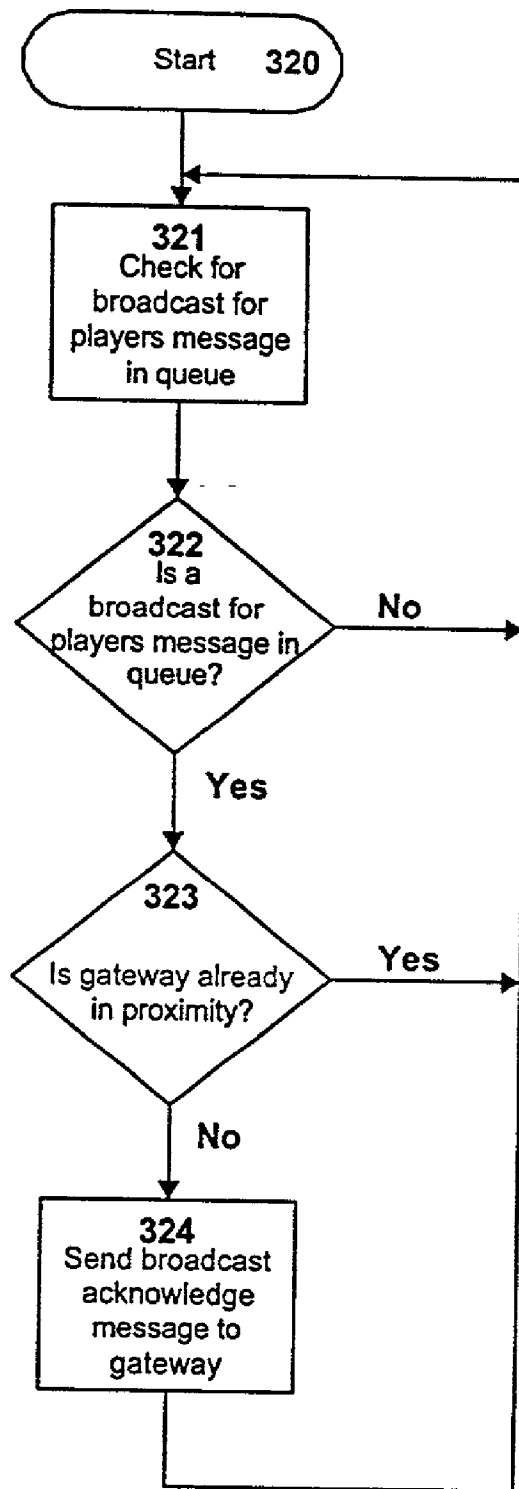


Figure 22

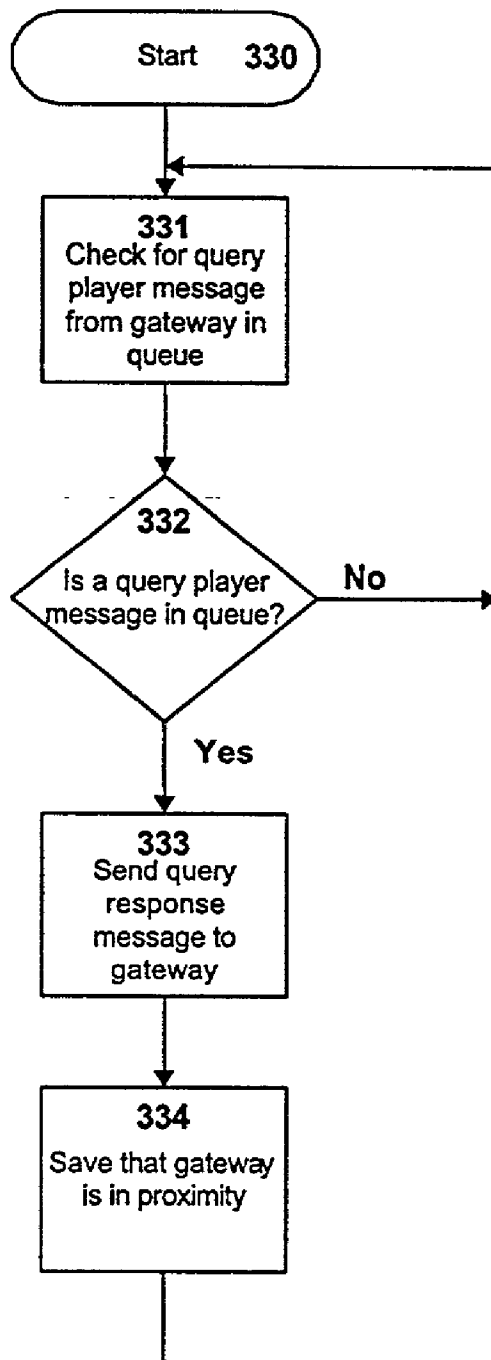


Figure 23

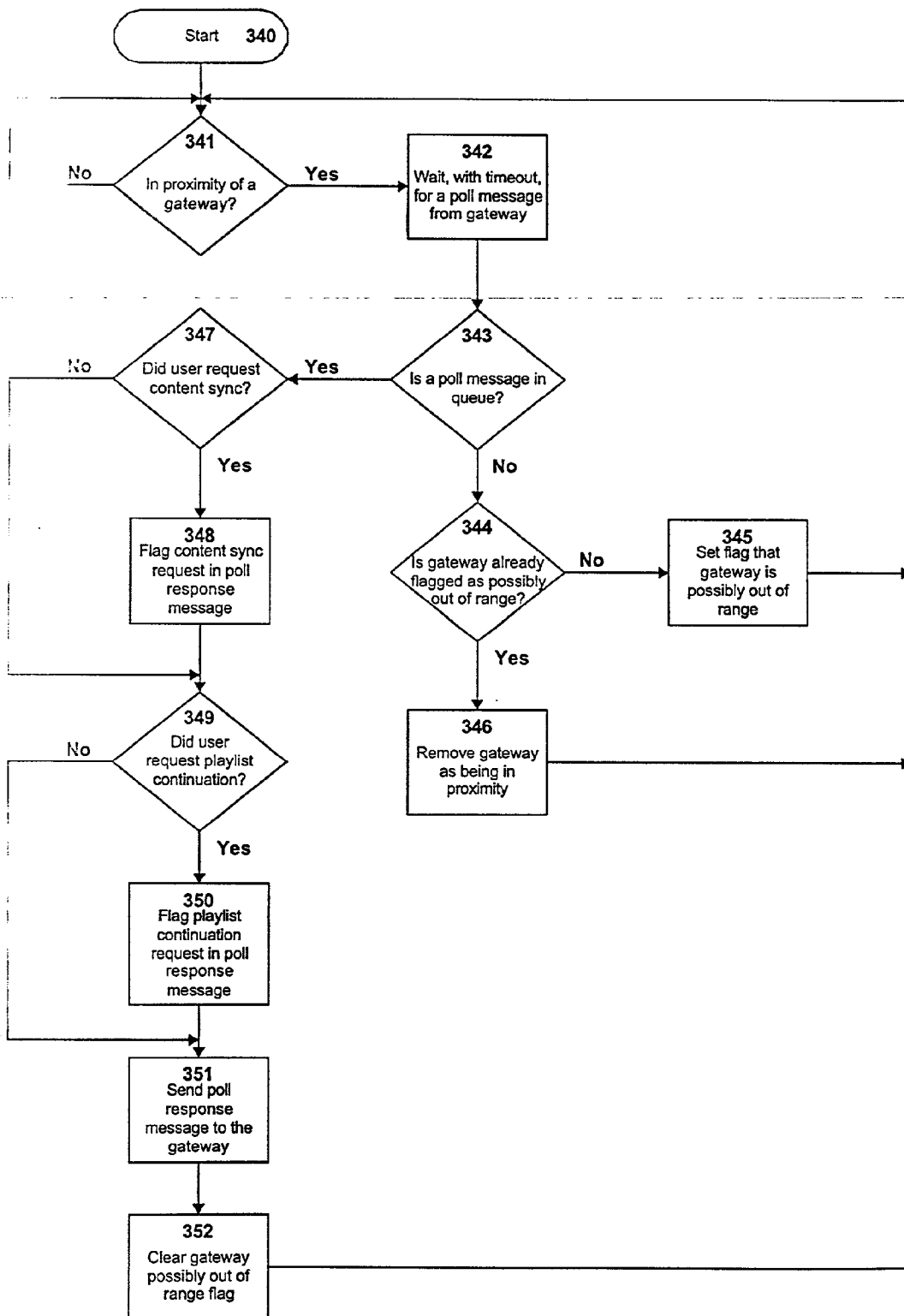


Figure 24

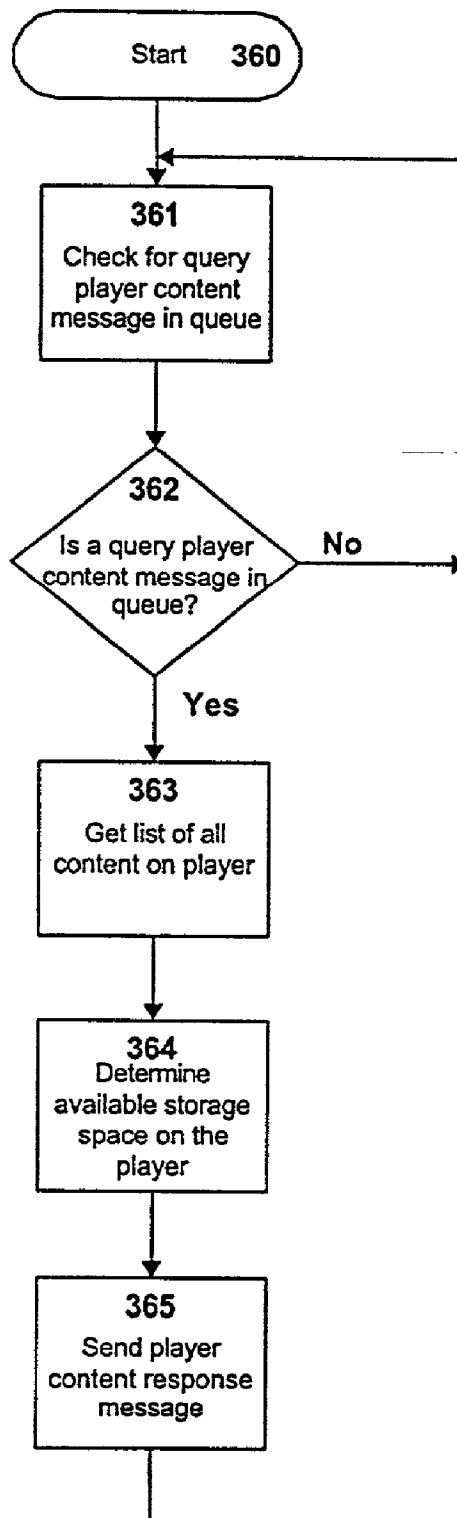


Figure 25

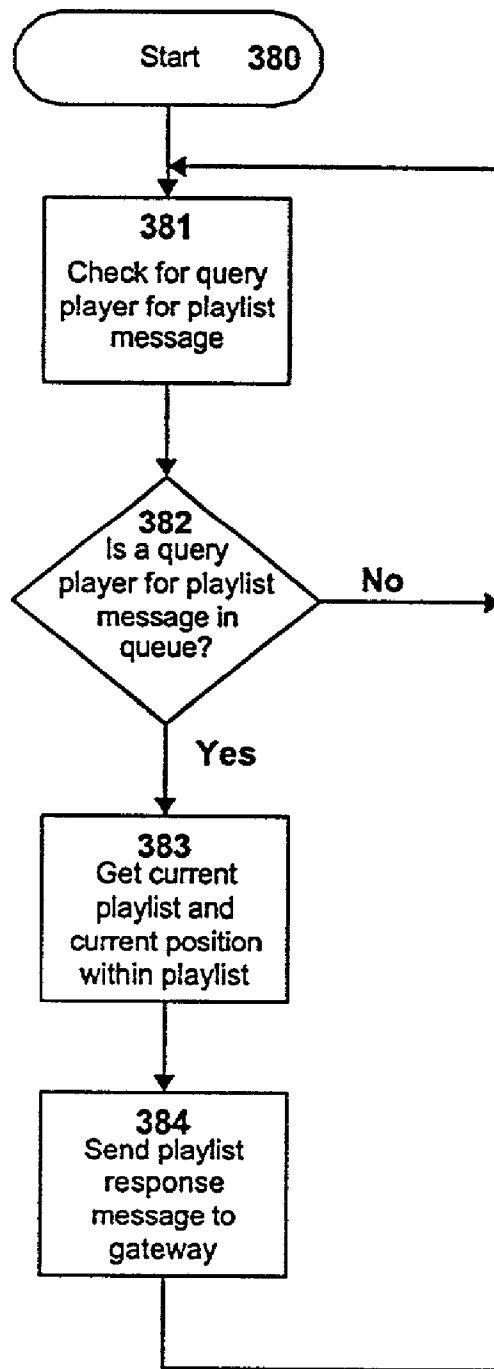


Figure 26

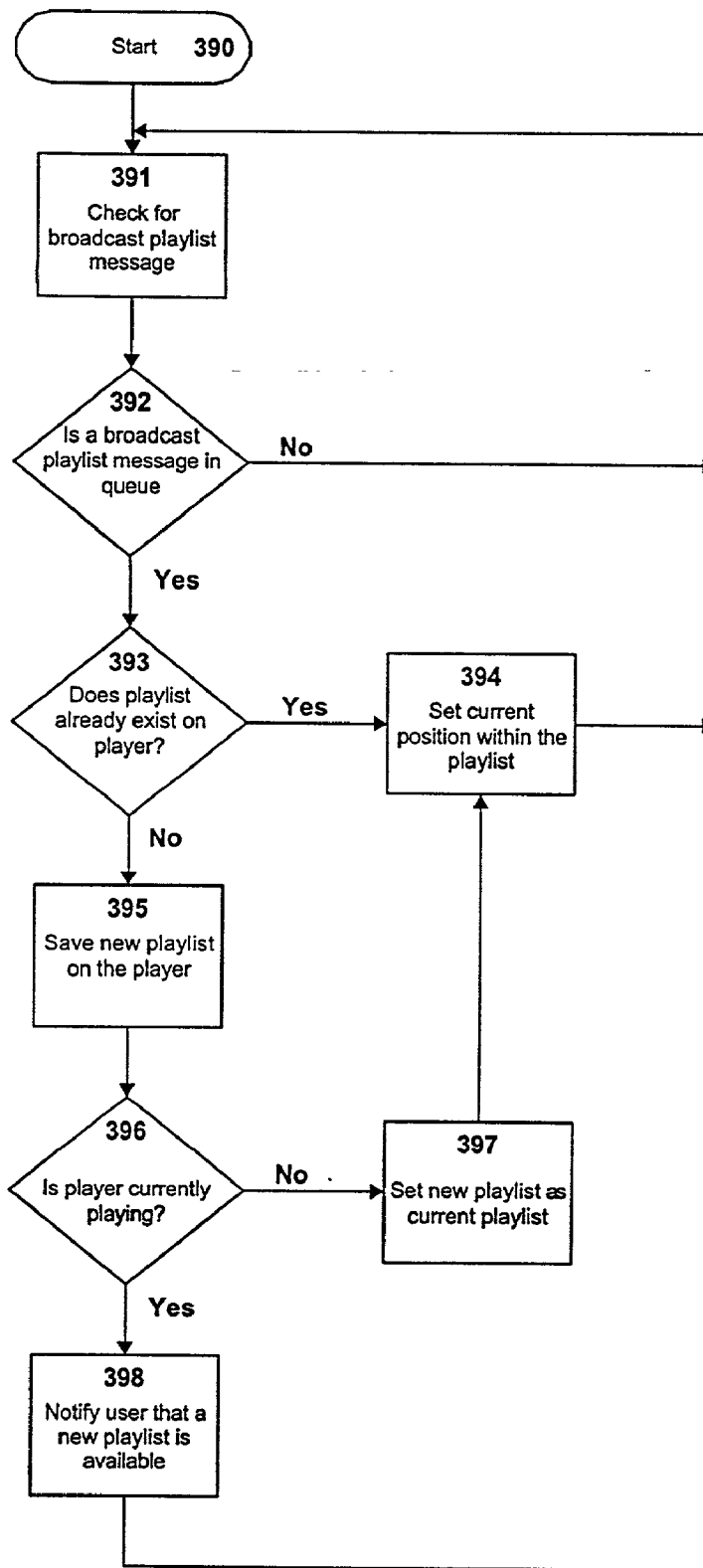


Figure 27

PROXIMITY SYNCHRONIZING AUDIO PLAYBACK DEVICE

CROSS-REFERENCE TO RELATED APPLICATIONS

[0001] This application is related to the following commonly-owned co-pending applications: "Proximity Synchronization of Audio Content Among Multiple Playback and Storage Devices", by Jeffrey J. Spurgat, S. Christopher Gladwin and Hoyet H. Andrews III, Ser. No. _____, Attorney Docket Number 11748/17 and "Proximity Synchronizing Audio Gateway Device" by Jeffrey J. Spurgat, S. Christopher Gladwin and Hoyet H. Andrews III, Ser. No. _____, Attorney Docket No. 11748/19, both filed on even date.

BACKGROUND OF THE INVENTION

[0002] 1. Field of the Invention

[0003] The present invention relates to a digital audio playback device and more particularly to a digital audio playback device that uses wireless communication to interact and synchronize with a computing platform as well as other mobile digital audio players and fixed digital audio players.

[0004] 2. Description of the Prior Art

[0005] A multitude of different devices for digital audio playback are known. Handheld or portable audio players, mobile as well as fixed audio players are known. Examples of such handheld audio players are compact disc (CD) players and MP3 players. Such mobile audio players include audio players, such as CD players, mounted in vehicles. Such mobile audio players are known to be mounted either in-dash in the vehicle or in the case of conversion vans and recreational vehicles in ceiling of the vehicle. Examples of fixed digital audio playback devices include stand-alone players and rack players that are adapted to connect to a home stereo system and to an AC power source.

[0006] Digital audio content from the Internet is known to be downloaded onto storage devices, such as CDs, by way of a personal computer. Such Internet-based digital audio content has also been downloaded onto portable MP3 audio players. Although such systems allow selected digital audio content to be played when desired by the user, such systems only allow rather limited functionality. As such, various functions, such as interaction, communication and synchronizing the digital content on a plurality of digital audio players must be done manually. Thus, there is a need for system for providing increased functionality of various digital audio players.

SUMMARY OF THE INVENTION

[0007] Briefly, the present invention relates to a digital audio playback device that includes a wireless communication link to enable it to interact and synchronize with computing platforms as well as other mobile digital audio players and fixed digital audio players. A digital audio playback device is configured such that the computing platform may automatically or upon user request copy, add or remove digital audio content or other information, such as playlists. In addition, digital content on the digital audio playback device can be synchronized with a computing

platform. In one embodiment of the invention, the digital audio playback device is configured to enable wireless communication among other digital playback devices and/or a computing platform to allow synchronization and control.

DESCRIPTION OF THE DRAWINGS

[0008] These and other advantages of the present invention will be readily understood with reference to the following specification and attached drawings wherein:

[0009] **FIG. 1** is a block diagram of a digital audio communication system in accordance with the present invention.

[0010] **FIG. 2** is a block diagram of a digital audio gateway in accordance with the present invention.

[0011] **FIG. 3** is a block diagram of a wireless communication network which includes various digital audio players in accordance with the present invention.

[0012] **FIG. 4** is a block diagram of a system which utilizes a personal computing platform for communicating with a plurality of audio players.

[0013] **FIG. 5** is an alternate embodiment of the invention which illustrates the use of a television set top box as a communication link for communicating with a plurality of digital audio players in accordance with an alternate embodiment of the invention.

[0014] **FIG. 6** is a block diagram of an alternate embodiment of the invention which illustrates a communication system between a number of digital audio players and stand-alone audio gateway.

[0015] **FIG. 7** is a block diagram of a communication network between various digital audio players in accordance with another aspect of the present invention.

[0016] **FIG. 8** is a block diagram of the computing platform in accordance with the present invention.

[0017] **FIG. 9** is a block diagram of a stand-alone audio gateway in accordance with the present invention.

[0018] **FIG. 10** is a block diagram of a mobile digital audio player in accordance with the present invention.

[0019] **FIG. 11** is a block diagram of a fixed digital audio player in accordance with the present invention.

[0020] **FIG. 12** is a block diagram of a handheld or portable digital audio player in accordance with the present invention.

[0021] **FIG. 13** is a block diagram of an automotive digital audio player in accordance with the present invention.

[0022] **FIG. 14** is a block diagram of a rack player in accordance with the present invention.

[0023] **FIG. 15** is a block diagram of a stand-alone digital audio player in accordance with the present invention.

[0024] **FIG. 16** is a flow diagram of the audio gateway message handling in accordance with the present invention.

[0025] **FIG. 17** is a flow diagram of the audio gateway discovery in accordance with the present invention.

[0026] **FIG. 18** is a flow diagram of the audio gateway drop-out detection in accordance with the present invention.

[0027] FIG. 19 is a flow diagram of the audio gateway content synchronization in accordance with the present invention.

[0028] FIG. 20 is a flow diagram of the audio gateway playlist continuation in accordance with the present invention.

[0029] FIG. 21 is a flow diagram of the player message handling in accordance with the present invention.

[0030] FIGS. 22 and 23 are flow diagrams of the player discovery in accordance with the present invention.

[0031] FIG. 24 is a flow diagram of the player drop-out detection in accordance with the present invention.

[0032] FIG. 25 is a flow diagram of the player content synchronization in accordance with the present invention.

[0033] FIGS. 26 and 27 are flow diagrams of the player playlist continuation feature in accordance with the present invention.

DETAILED DESCRIPTION

[0034] The present invention is adapted to provide additional functionality of digital audio players. For example, in one embodiment, as illustrated in FIG. 1, a computing platform 103, for example, a personal computer, is used as a gateway to enable various digital audio players 115 and 116 to be connected to the Internet or other computer network 102. In this embodiment, the computing platform 103 may be configured to access one or more servers 100 on the Internet or other computer network 102 that contain digital audio content and other information 101, such as artists, track names, album names, lyrics, and playlists, among other things. Though the computing platform 103 can act as a digital audio player by itself, in this embodiment of the invention, the computing platform 103 acts as an audio gateway for various digital audio players 115 and 116, and can additionally provide caching of the digital audio content and other information 101 for the digital audio players 115 and 116 from the servers 100 that are connected to the computing platform 103 through the Internet or other computer network 102. Using a wireless network or wireless communication platform 104, the computing platform 103 is adapted to communicate with various digital audio players, such as one or more mobile digital audio players 115 and fixed digital audio players 116 that are within range of the wireless network or wireless communication platform 104 forming a local wireless network as generally illustrated in FIG. 3.

[0035] Various devices are contemplated for use as audio gateways, for example, as shown in FIG. 2. In one embodiment, a personal computer 105 coupled to an internal or external wireless communication network or wireless communication platform 104, for example, an access point 106, is used as an audio gateway. Alternatively, a set top box 107 with a wireless network or wireless communication platform 104, coupled to a conventional TV 108, may be used as an audio gateway. A stand alone audio gateway 109 may also be formed from a wireless network or wireless communication platform 104. Other embodiments of an audio gateway are also contemplated. For example, any device with a wireless network or wireless communication platform 104, either public or private, may be used.

[0036] In another embodiment of the invention, the computing platform 103 may be configured to automatically synchronize, or upon request, copy, add or remove digital audio content and other information 101, such as playlists, on mobile digital audio players 115 and fixed digital audio players 116. The computing platform 103 may also be used to control mobile digital audio players 115 and fixed digital audio players 116 by changing the current playlist or the currently playing digital audio content, among other things, on the mobile digital audio players 115 or fixed digital audio players 116.

[0037] In another embodiment of the invention as illustrated in FIG. 7, the system enables communication between various digital audio players, such as the digital audio players 110-113. This embodiment may be also incorporated with a computing platform 103, for example, acting as a gateway, as discussed above, or alternatively using the computing platform 103 for synchronization among the various digital audio players 110-113 or other functions, such as those discussed above.

[0038] Audio Gateway

[0039] FIGS. 4-6 represent an exemplary network configuration, utilizing different audio gateways for enabling connection of the digital audio players 110-113 to the Internet or other computer network 102. These examples are by no means the only possible configurations that support the invention and do not necessarily cover all aspects of the invention.

[0040] Personal Computer and Digital Audio Players Configuration

[0041] The first exemplary configuration, shown in FIG. 4, uses a personal computer 105 as the audio gateway. The personal computer 105 connects to the Internet or other computer network 102 using a conventional network interface or modem 137. The personal computer 105 is thus able to download digital audio content and other information 101 from the server 100 (FIG. 1) connected to the Internet or other computer network 102. The digital audio content and other information 101, such as artists, track names, album names, lyrics, and playlists, can then be stored in a persistent storage 133 (FIG. 8), such as a hard drive, on the personal computer 105. The user can also create new playlists using the personal computer 105.

[0042] In this embodiment, a wireless access point 106 is used to access the wireless network or wireless communication platform 104. The wireless network or wireless communication platform 104 is used by the personal computer 105, acting as the audio gateway, to communicate with mobile digital audio players 115 and fixed digital audio players 116. The personal computer 105, using the wireless network or wireless communication platform 104, is able to, either automatically or at user request, pass the digital audio content and other information 101, including new playlists, to mobile digital audio players 115 and fixed digital audio players 116. If a fixed digital audio player 116, such as a stand-alone player 112 or a rack player 113 that connects to a stereo 114, happens to be turned off at the time, then the personal computer 105 is able to automatically detect the next time the fixed digital audio player 116 is turned on. When the personal computer 105 detects that a fixed digital audio player 116 has just turned on, then the personal

computer **105** can pass the digital audio content and other information **101** to the fixed digital audio player **116** at that time. Mobile digital audio players **115**, such as automotive players **110** and handheld players **111**, may be out of range of the wireless network or wireless communication platform **104** during normal use. When a mobile digital audio player **115** comes into range of the wireless network or wireless communication platform **104**, the personal computer **105**, acting as an audio gateway, can automatically detect the mobile digital audio player **115** and pass the digital audio content and other information **101** at that time.

[0043] In addition, the personal computer **105** can, either automatically or upon user request, determine the current playlist and current position within the playlist on a particular mobile digital audio player **115** or fixed digital audio player **116**. Then the personal computer **105** can propagate this playlist information to any other mobile digital audio players **115** and fixed digital audio players **116** that are on and in range. This allows a user to move from one mobile digital audio player **115** or fixed digital audio player **116** to another mobile digital audio player **115** or fixed digital audio player **116** and automatically be able to continue the same music and playlist in a seamless manner.

[0044] Set-top Box and Digital Audio Players Configuration

[0045] Another exemplary configuration, shown in FIG. 5, uses a set-top box **107** as the audio gateway. The set-top box **107** can connect to the Internet or other computer network **102** either through the same cable or by way of a satellite connection that provides the analog or digital audio or video **151** (FIG. 8) that is passed to an audio or video playback device, such as a television set **108**, or through an internal or external network interface or modem **137**. The set-top box **107** can thus download digital audio content and other information **101** from a server **100**, connected to the Internet or other computer network **102**. The digital audio content and other information **101**, such as artists, track names, album names, lyrics, and playlists, can then be stored in persistent storage **133**, such as a hard drive or flash memory, on the set-top box **107**.

[0046] In this embodiment, a wireless network interface or wireless communication interface **141** is used to handle the wireless network or wireless communication platform **104**. The set-top box **107**, acting as the audio gateway, uses the wireless network or wireless communication platform **104** to communicate with mobile digital audio players **115** and the fixed digital audio players **116**. The set-top box **107**, using the wireless network or wireless communication platform **104**, is able to, either automatically or upon user request, pass the digital audio content and other information **101** to mobile digital audio players **115** and fixed digital audio players **116**.

[0047] If a fixed digital audio player **116**, such as a stand-alone player **112** or a rack player **113** that connects to a stereo **114**, happens to be turned off at the time, then the set-top box **107** is able to automatically detect the next time the fixed digital audio player **116** is turned on. When the set-top box **107** detects that a fixed digital audio player **116** has just turned on, then the set-top box **107** can pass the digital audio content and other information **101** to the fixed digital audio player **116** at that time. Mobile digital audio players **115**, such as automotive players **110** and handheld

players **111**, are typically out of range of the wireless network or wireless communication platform **104** during normal use.

[0048] When a mobile digital audio player **115** comes into range of the wireless network or wireless communication platform **104**, the set-top box **107**, acting as an audio gateway, can automatically detect the mobile digital audio player **115** and pass the digital audio content and other information **101** at that time. In addition, the set-top box **107** can determine, either automatically or upon user request, the current playlist and current position within the playlist on a particular mobile digital audio player **115** or fixed digital audio player **116**. Then the set-top box **107** can propagate this playlist information to any other mobile digital audio players **115** and fixed digital audio players **116** that are on and in range. This allows a user to move from one mobile digital audio player **115** or fixed digital audio player **116** to another mobile digital audio player **115** or fixed digital audio player **116** and automatically be able to continue the same music and playlist in a seamless manner.

[0049] Stand-alone Gateway and Digital Audio Players Configuration

[0050] Another exemplary configuration, shown in FIG. 6, uses a stand-alone audio gateway **109** as the audio gateway. The stand-alone audio gateway **109** connects to the Internet or other computer network **102** using a network interface or modem **137**. The stand-alone audio gateway **109** can download digital audio content and other information **101** from a server **100** connected to the Internet or other computer network **102**. The digital audio content and other information **101**, such as artists, track names, album names, lyrics, and playlists, can then be stored in persistent storage **133**, such as a hard drive or flash memory, on the stand-alone audio gateway **109**. In this embodiment, a wireless network interface or wireless communication interface **141** (FIG. 8) is used to handle the wireless network or wireless communication platform **104**. The wireless network or wireless communication platform **104** is used by the stand-alone audio gateway **109** to communicate with mobile digital audio players **115** and fixed digital audio players **116**. The stand-alone audio gateway **109**, using the wireless network or wireless communication platform **104**, is able to, either automatically or at user request, pass the digital audio content and other information **101** to mobile digital audio players **115** and fixed digital audio players **116**. If a fixed digital audio player **116**, such as a stand-alone player **112** or a rack player **113** that connects to a stereo **114**, happens to be turned off at the time, then the stand-alone audio gateway **109** is able to automatically detect the next time the fixed digital audio player **116** is turned on. When the stand-alone audio gateway **109** detects that a fixed digital audio player **116** has just turned on, then the stand-alone audio gateway **109** can pass the digital audio content and other information **101** to the fixed digital audio player **116** at that time.

[0051] Mobile digital audio players **115**, such as automotive players **110** and portable or handheld players **111**, may be out of range of the wireless network or wireless communication platform **104** during normal use. When a mobile digital audio player **115** comes into range of the wireless network or wireless communication platform **104**, the stand-alone audio gateway **109** can automatically detect the mobile digital audio player **115** and pass the digital audio content and other information **101** at that time.

[0052] In addition, the stand-alone audio gateway 109 can, either automatically or upon user request, determine the current playlist and current position within the playlist on a particular mobile digital audio player 115 or fixed digital audio player 116. Then the stand-alone audio gateway 109 can propagate this playlist information to any other mobile digital audio players 115 and fixed digital audio players 116 that are on and in range. This allows a user to move from one mobile digital audio player 115 or fixed digital audio player 116 to another mobile digital audio player 115 or fixed digital audio player 116 and automatically be able to continue the same music and playlist in a seamless manner.

[0053] Local Wireless Network

[0054] In another embodiment, shown in FIG. 3, a local wireless network is formed which enables wireless communication between a host, such as a personal computer 105, a stand alone audio gateway 109, a set top box 107, and various digital audio players, such as mobile digital audio players 115, fixed digital audio players 116, a stand alone audio gateway 109 and a set top box 107, for example, configured in a star topography. As shown, various audio gateways are used to establish the network. However, in this embodiment, audio gateways, which contain a wireless network or wireless communication platform 104 as discussed above, are used primarily for establishing network communication and may or may not be connected to a remote server 100.

[0055] Wireless communications between the computing platform 103 and mobile digital audio players 115 and fixed digital audio players 116, can be done using industry standard wireless communications and networking technology, such as Bluetooth, HomeRF, and IEEE 802.11. In addition, with respect to this invention, a proprietary wireless communications technology may also be used for wireless communications. Use of the wireless network or wireless communication platform 104 by computing platforms 103, mobile digital audio players 115, and fixed digital audio players 116 may be handled as an internal or external peripheral in the form of a wireless network interface or wireless communication interface 141. The wireless network or wireless communication platform 104 may also require an external wireless access point 106 to handle or facilitate wireless communications and to act as a bridge between the wireless network and wired networking connections, such as may be used by a personal computer 105.

[0056] Communication Between Digital Audio Players

[0057] FIG. 7 illustrates a wireless network configuration which enables communication directly among various digital audio players without a host. The various digital audio players, such as mobile digital audio players 115 and fixed digital audio players 116, use the same wireless network or wireless communication platform 104 that is used to wirelessly communicate with the computing platform 103, to communicate with each other. The wireless communication between the various digital audio players may be handled by an internal or external wireless network interface or wireless communication interface 141 (FIGS. 10 and 11) in each of the disposed digital audio players. In this embodiment, communication between the various digital audio players include directly passing digital audio content and other information 101, including playlists from, for example, one mobile digital audio player 115 or fixed digital audio player 116 to another.

[0058] Computing and Player Architectures

[0059] FIGS. 8 and 9 illustrate architectures for the computing platform and stand-alone audio gateway platforms. FIGS. 10-15 illustrate the architectures for the various digital audio player platforms. As shown, the architecture of the various platforms is similar. Thus, like reference numbers are used for like components for clarity.

[0060] Computing Platform

[0061] FIG. 8 illustrates the typical system architecture of a computing platform 103, which can encompass anything from general-purpose devices, such as personal computers 105, to open fixed function devices, such as set-top boxes 107 or stand-alone audio gateways 109, among others. In general, the computing platform 103 has a main processor 130, such as an Intel Pentium III, for executing various software components. The various software instructions are typically stored in read only memory, or ROM, or flash memory 136, or local storage 132. The local storage 132 can consist of persistent storage 133, such as hard drives or flash memory, or removable storage 134, such as floppy drives, CD-ROM drives, or DVD drives. The software instructions may be executed by the main processor 130 directly from their storage location or loaded into random access memory or RAM 135 to be executed from RAM 135 by the main processor 130. The local storage 132 can also be used to cache digital audio content and other information 101.

[0062] The computing platform 103 uses a network interface or modem 137 to access servers 100 on the Internet or other computer network 102, in order to download digital audio content or other information 101. The network interface or modem 137, for example, a 3COM Etherlink 10/100 PCI network interface card, may be connected internally or externally to the computing platform 103 using a system bus or peripheral bus 131. The system bus and peripheral buses 131 are provided for connecting internal and external devices to the computing platform 103 in a standard manner. Typical system and peripheral buses 131 include Universal Serial Bus, commonly referred to as USB, IEEE 1394 bus, commonly referred to as FireWire, and Peripheral Connect Interface, commonly referred to as PCI.

[0063] The computing platform 103 also supports connection through a user input interface 142 to external or integrated user input devices 153, such as keyboards and mice. In order to provide for output to the user, the computing platform 103 may also contain a display controller 138, for example, an NVIDIA Model No. GeForce2, which stores graphical data such as windows, bitmaps and text. The display controller 138 outputs the graphical data in a video output 150 format that is typically displayed to the user on a video monitor, television 108, or LCD panel. In addition to video output 150, the computing platform 103 can provide audio output 152, which is handled by audio playback hardware 140.

[0064] For a computing platform 103 that is acting as a set-top box 107, the computing platform 103 will likely also contain an analog or digital audio and video decoder 139, for example, a C-Cube Model No. AViA 600, hereby incorporated by reference. The analog or digital audio and video decoder 139 decodes the analog or digital audio or video 151 from sources such as cable or satellite, and passes the audio output 152 and video output 150 to an audio and video playback device, such as a television set 108.

[0065] For wireless communication with other computing platforms 103, and various digital audio players, such as mobile digital audio players 115, and fixed digital audio players 116 on a wireless network or wireless communication platform 104, the computing platform 103 uses an internal or external wireless network interface or wireless communication interface 141. It should be noted that a computing platform 103 is not limited to the capabilities and features listed in this description, but may contain a subset of the described features or may contain additional capabilities or features not listed.

[0066] Gateway Platform

[0067] FIG. 9 demonstrates some of the unique capabilities of the stand-alone audio gateway 109, though this example is by no means complete or exhaustive in its coverage of the possible options for a stand-alone audio gateway 109. In particular, the stand-alone audio gateway 109 acts as a fixed function device, whose main purpose is to be an audio gateway. The fixed function nature of the stand-alone audio gateway 109 is unlike the personal computer 105, which exists as a general-purpose computing device. The stand-alone audio gateway 109 is able to connect to the Internet or other computer network 102 using an internal or external network interface or modem 137. The stand-alone audio gateway 109 is able to cache digital audio content and other information 101 downloaded from a server 100 connected to the Internet or other computer network 102 into persistent storage 133, such as a hard drive, on the stand-alone audio gateway 109.

[0068] FIG. 9 illustrates a typical system architecture of the stand-alone audio gateway 109. In general, the stand-alone audio gateway 109 has a main processor 130 for executing various software components. The various software components are typically stored in read only memory, or ROM, or flash memory 136, or local storage 132. Local storage 132 can consist of persistent storage 133, such as hard drives or flash memory, or removable storage 134 such as floppy drives, CD-ROM drives, or DVD drives. The software components are executed by the main processor 130 directly from their storage location or are loaded into random access memory or RAM 135, to be executed from RAM 135 by the main processor 130. Local storage 132 can also be used to cache digital audio content and other information 101. The stand-alone audio gateway 109 uses a network interface or modem 137 to access servers 100 on the Internet or other computer network 102, in order to download digital audio content or other information 101. The network interface or modem 137 is connected internally or externally to the stand-alone audio gateway 109 using a system bus or peripheral bus 131. The system bus and peripheral buses 131 are provided for connecting internal and external devices to the stand-alone audio gateway 109 in a standard manner. Typical system and peripheral buses 131 include Universal Serial Bus, commonly referred to as USB, IEEE 1394, commonly referred to as FireWire, and Peripheral Connect Interface, commonly referred to as PCI. The stand-alone audio gateway 109 also supports connection through a user input interface 142 to external or integrated user input devices 153, such as buttons, keyboards and mice. For output to the user, the stand-alone audio gateway 109 may contain a display controller 138, which stores display data such as windows, bitmaps and text. The display controller 138 outputs the display data in a video output 150

format that is typically displayed to the user on a video monitor, television 108, or LCD panel. In addition to video output 150, the stand-alone audio gateway 109 can provide audio output 152, which is handled by audio playback hardware 140. For wireless communication with mobile digital audio players 115, and fixed digital audio players 116 on a wireless network or wireless communication platform 104, the stand-alone audio gateway 109 uses an internal or external wireless network interface or wireless communication interface 141. It should be noted that a stand-alone audio gateway 109 is not limited to the capabilities and features listed in this description, but may contain a subset of the described features or may contain additional capabilities or features not listed.

[0069] Mobile Player

[0070] Many different types of mobile digital audio players 115 are suitable for use with the present invention. FIG. 10 demonstrates the general architecture for a mobile digital audio player 115. In general, a mobile digital audio player 115 has a processor 155 that is responsible for executing various software and firmware components. The various software and firmware components are typically stored in read only memory, or ROM, or flash memory 158 or in player storage 156, such as a hard drive, flash memory, or removable media. The software and firmware components are executed by the processor 155 directly from their storage location or are loaded into random access memory or RAM 157 to be executed from RAM 157 by the processor 155. Player storage 156 can also be used for storing digital audio content and other information 101, such as artists, track names, album names, lyrics, and playlists, for later playback and presentation to the user. Typically, the digital audio content 101 is in some encoded format. The audio decoder 162 decodes the digital audio content 101 and passes it to the audio digital to analog converter 163, or DAC. The audio DAC 163 converts the decoded audio to analog and then provides audio output 166 from the mobile digital audio player 115. The audio output 166 of a mobile digital audio player 115 is typically passed to an amplifier or headphones. Communication using a wireless network or wireless communication platform 104 by the mobile digital audio player 115 with a computer platform 103, other mobile digital audio players 115, and fixed digital audio players 116 is done using an internal or external wireless network interface or wireless communication interface 141. For input from the user, the mobile digital audio player 115 contains user inputs 165, such as buttons or a touch screen. The user input interface 164 handles the actual interface with the user inputs 165, while interpretation of these inputs are typically handled by software and firmware running on the processor 155. For output to the a user, the mobile digital audio player 115 may contain a display controller 160, which can provide text and possibly graphical output to the user on an LCD display 161. Tying of the functional components and processor 155 together is typically done using a system bus and peripheral buses 159. Examples of system and peripheral buses 159 include Universal Serial Bus, commonly referred to as USB, IEEE 1394, commonly referred to as FireWire, and Peripheral Connect Interface, commonly referred to as PCI. It should be noted that some of the functional blocks described might encompass multiple physical components. As well, multiple functional blocks may be contained in a single physical component. It should also be noted that a mobile digital audio player 115 is not limited to the capa-

bilities and features listed in this description, but may contain a subset of the described features or may contain additional capabilities or features not listed.

[0071] Fixed Player

[0072] There are many different types of fixed digital audio players 116. FIG. 11 demonstrates the general architecture for a fixed digital audio player 116. In general, a fixed digital audio player 116 has a processor 155 that is responsible for executing various software and firmware components. The various software and firmware components are typically stored in read only memory, or ROM, or flash memory 158 or in player storage 156, such as a hard drive, flash memory, or removable media. The software and firmware components are executed by the processor 155 directly from their storage location or are loaded into random access memory or RAM 157 to be executed from RAM 157 by the processor 155. Player storage 156 can also be used for storing digital audio content and other information 101, such as artists, track names, album names, lyrics, and playlists, for later playback and presentation to the user. Typically, the digital audio content 101 is in some encoded format. The audio decoder 162 decodes the digital audio content 101 and passes it to the audio digital to analog converter 163, or DAC. The audio DAC 163 converts the decoded audio to analog and then provides audio output 167 from the fixed digital audio player 116. The audio output 167 of a fixed digital audio player 116 is typically passed to a stereo, amplifier, speakers or headphones. Communication using a wireless network or wireless communication platform 104 by the fixed digital audio player 116 with a computing platform 103, mobile digital audio players 115, and other fixed digital audio players 116, is done using an internal or external wireless network interface or wireless communication interface 141. For input from the user, the fixed digital audio player 116 contains user inputs 165, such as buttons or a touch screen. The fixed digital audio player 116 may also receive infrared input 168 from a remote control. The user input interface 164 handles the actual interface with the user inputs 165 and the infrared input 168, while interpretation of these inputs are typically handled by software and firmware running on the processor 155. For output to the user, the fixed digital audio player 116 may contain a display controller 160, which can provide text and possibly graphical output to the user on an LCD display 161. Tying of the functional components and processor 155 together is typically done using a system bus and peripheral buses 159. Examples of system and peripheral buses 159 include Universal Serial Bus, commonly referred to as USB, IEEE 1394, commonly referred to as FireWire, and Peripheral Connect Interface, commonly referred to as PCI. It should be noted that some of the functional blocks described might encompass multiple physical components. As well, multiple functional blocks may be contained in a single physical component. It should also be noted that a fixed digital audio player 116 is not limited to the capabilities and features listed in this description, but may contain a subset of the described features or may contain additional capabilities or features not listed.

[0073] Handheld Player

[0074] Many different types of mobile digital audio players 115 are suitable for use with the present invention. For example, FIG. 12 illustrates the general architecture for the

handheld player 111. In general, the handheld player 111 includes a processor 155 for executing various software and firmware instructions. The various software and firmware instructions may be stored in read only memory, or ROM, or flash memory 158 or in player storage 156, such as a hard drive, flash memory, or removable media. The software and firmware instructions are executed by the processor 155 directly from their storage location or are loaded into random access memory or RAM 157 to be executed from RAM 157 by the processor 155. Player storage 156 can also be used for storing digital audio content and other information 101, such as artists, track names, album names, lyrics, and playlists, for later playback and presentation to the user. Typically, the digital audio content 101 is in some encoded format. The audio decoder 162, for example, a Texas Instruments digital signal processor, Model No. TMS320VC5416, decodes the digital audio content 101 and passes it to the audio digital to analog converter 163, or DAC. The audio DAC 163, for example, a Texas Instruments Model No. TLC320AD77C converts the decoded audio to analog and then provides audio output 166 from the handheld player 111. The audio output 166 of a handheld player 111 may be used to drive headphones.

[0075] Communication using a wireless network or wireless communication platform 104 by the handheld player 111 with the computing platforms 103, other mobile digital audio players 115, and fixed digital audio players 116 is done using an internal or external wireless network interface or wireless communication interface 141. For input from the user, the handheld player 111 contains user inputs 165, such as buttons or a touch screen. The user input interface 164 handles the actual interface with the user inputs 165, while interpretation of these inputs are typically handled by software and firmware running on the processor 155. For output to the user, the handheld player 111 may contain a display controller 160, for example, an embedded display controller in a Motorola MC68EZ328 controller, which can provide text and possibly graphical output to the user on an LCD display 161. Tying of the functional components and processor 155 together is typically done using a system bus and peripheral buses 159. Examples of system and peripheral buses 159 include Universal Serial Bus, commonly referred to as USB, IEEE 1394, commonly referred to as FireWire, and Peripheral Connect Interface, commonly referred to as PCI. It should be noted that some of the functional blocks described might encompass multiple physical components. As well, multiple functional blocks may be contained in a single physical component. It should also be noted that a handheld player 111 is not limited to the capabilities and features listed in this description, but may contain a subset of the described features or may contain additional capabilities or features not listed.

[0076] Automotive Player

[0077] Another type of mobile digital audio player 115 is the automotive player 110, whose general architecture is shown in FIG. 13. In general, the automotive player 110 includes a processor 155 that is responsible for executing various software and firmware instructions. The various software and firmware components are typically stored in read only memory, or ROM, or flash memory 158 or in player storage 156, such as a hard drive, flash memory, or removable media. The software and firmware instructions are executed by the processor 155 directly from their storage

location or are loaded into random access memory or RAM 157 to be executed from RAM 157 by the processor 155. Player storage 156 can also be used for storing digital audio content and other information 101, such as artists, track names, album names, lyrics, and playlists, for later playback and presentation to the user.

[0078] Typically, the digital audio content 101 is in some encoded format. The audio decoder 162 decodes the digital audio content 101 and passes it to the audio digital to analog converter 163 or DAC. The audio DAC 163 converts the decoded audio to analog and then provides audio output 167 from the automotive player 110. The audio output 167 of an automotive player 110 typically feeds a conventional audio amplifier, which then drives the car speakers. Communication using a wireless network or wireless communication platform 104 by the automotive player 110 with computing platforms 103, other mobile digital audio players 115, and fixed digital audio players 116 is done using an internal or external wireless network interface or wireless communication interface 141.

[0079] For input from the user, the automotive player 110 contains user inputs 165, such as buttons or a touch screen. The user input interface 164 handles the actual interface with the user inputs 165, while interpretation of these inputs are typically handled by software and firmware running on the processor 155. In addition, an automotive player 110 may support voice commands for user input. If voice commands are supported, a microphone 174 is used to feed analog audio to the audio analog to digital converter 173, which converts the analog audio to digital. Then, the audio capture hardware 172 and the processor 155 will interpret the voice commands from the user. For output to the user, the automotive player 110 may contain a display controller 160, which can provide text and possibly graphical output to the user on an LCD display 161. Tying of the functional components and processor 155 together may be accomplished by way of a system bus and peripheral buses 159. Examples of suitable system and peripheral buses 159 include Universal Serial Bus, commonly referred to as USB, IEEE 1394, commonly referred to as FireWire, and Peripheral Connect Interface, commonly referred to as PCI.

[0080] It should be noted that some of the functional blocks described might encompass multiple physical components. As well, multiple functional blocks may be contained in a single physical component. It should also be noted that an automotive player 110 is not limited to the capabilities and features listed in this description, but may contain a subset of the described features or may contain additional capabilities or features not listed.

[0081] Rack Player

[0082] There are many different types of fixed digital audio players 116. FIG. 14 demonstrates the general architecture for a rack player 113. In general, a rack player 113 includes a processor 155 that is responsible for executing various software and firmware instructions. The various software and firmware instructions may be stored in read only memory, or ROM, or flash memory 158 or in player storage 156, such as a hard drive, flash memory, or removable media. The software and firmware instructions may be executed by the processor 155 directly from their storage location or loaded into random access memory or RAM 157 to be executed from RAM 157 by the processor 155. Player

storage 156 can also be used for storing digital audio content and other information 101, such as artists, track names, album names, lyrics, and playlists, for later playback and presentation to the user. Typically, the digital audio content 101 is in some encoded format. The audio decoder 162 decodes the digital audio content 101 and passes it to the audio digital to analog converter 163, or DAC. The audio DAC 163 converts the decoded audio to analog and then provides audio output 167 from the rack player 113. The audio output 167 of a rack player 113 typically is passed to a stereo system 114. Communication using a wireless network or wireless communication platform 104 by the rack player 113 with computing platforms 103, mobile digital audio players 115, and other fixed digital audio players 116 is done using an internal or external wireless network interface or wireless communication interface 141. For input from the user, the rack player 113 contains user inputs 165, such as buttons or a touch screen. The rack player 113 may also receive infrared input 168 from a remote control. The user input interface 164 handles the actual interface with the user inputs 165 and the infrared input 168, while interpretation of these inputs are typically handled by software and firmware running on the processor 155. For output to the user, the rack player 113 may contain a display controller 160, which can provide text and possibly graphical output to the user on an LCD display 161. Tying connection of the functional components and processor 155 together may be accomplished by way of a system bus and peripheral buses 159. Examples of suitable system and peripheral buses 159 include Universal Serial Bus, commonly referred to as USB, IEEE 1394, commonly referred to as FireWire, and Peripheral Connect Interface, commonly referred to as PCI.

[0083] It should be noted that some of the functional blocks described might encompass multiple physical components. As well, multiple functional blocks may be contained in a single physical component. It should also be noted that a rack player 113 is not limited to the capabilities and features listed in this description, but may contain a subset of the described features or may contain additional capabilities or features not listed.

[0084] Stand-alone Player

[0085] Another type of fixed digital audio player 116 is the stand-alone player 112, whose general architecture is shown in FIG. 15. In general, a stand-alone player 112 includes a processor 155 that is responsible for executing various software and firmware instructions. The various software and firmware components are typically stored in read only memory, or ROM, or flash memory 158 or in player storage 156, such as a hard drive, flash memory, or removable media. The software and firmware components are executed by the processor 155 directly from their storage location or are loaded into random access memory or RAM 157 to be executed from RAM 157 by the processor 155. Player storage 156 can also be used for storing digital audio content and other information 101, such as artists, track names, album names, lyrics, and playlists, for later playback and presentation to the user. Typically, the digital audio content 101 is in some encoded format. The audio decoder 162 decodes the digital audio content 101 and passes it to the audio digital to analog converter 163, or DAC. The audio DAC 163 converts the decoded audio to analog. The analog audio from a stand-alone player 112 typically directly drives speakers 170 attached to the stand-alone player 112. Com-

munication using a wireless network or wireless communication platform 104 by the stand-alone player 112 with computing platforms 103, mobile digital audio players 115, and other fixed digital audio players 116 is done using an internal or external wireless network interface or wireless communication interface 141. For input from the user, the stand-alone player 112 contains user inputs 165, such as buttons or a touch screen. The stand-alone player 112 may also receive infrared input 168 from a remote control. The user input interface 164 handles the actual interface with the user inputs 165 and the infrared input 168, while interpretation of these inputs are typically handled by software and firmware running on the processor 155. For output to the user, the stand-alone player 112 may contain a display controller 160, which can provide text and possibly graphical output to the user on an LCD display 161. Connection of the functional components and processor 155 together is typically done using a system bus and peripheral buses 159. Examples of suitable system and peripheral buses 159 include Universal Serial Bus, commonly referred to as USB, IEEE 1394, commonly referred to as FireWire, and Peripheral Connect Interface, commonly referred to as PCI.

[0086] It should be noted that some of the functional blocks described might encompass multiple physical components. As well, multiple functional blocks may be contained in a single physical component. It should also be noted that a stand-alone player 112 is not limited to the capabilities and features listed in this description, but may contain a subset of the described features or may contain additional capabilities or features not listed.

[0087] Audio Gateway Software

[0088] FIGS. 16 to 20 provide flow diagrams for the audio gateway embodiment of this invention. In these flow diagrams, the software is assumed to be running in a multitasking environment, with each of the flow diagrams representing a particular independently running task or process. However, it should be noted that these flow diagrams represent only one of many different ways to implement the key software functionality for the audio gateway and that many other implementations are possible, including those which do not require a multitasking environment.

[0089] Audio Gateway Message Handling Flow

[0090] FIG. 16 provides the flow diagram of the message handler for the audio gateway. In general, the message handler takes the messages received from other computing platforms 103, mobile digital audio players 115, and fixed digital audio players 116 on the wireless network or wireless communication platform 104 and queues these messages for use by other processes or handles them itself, depending on the message type. In this embodiment, the message handler is a continuously running process. The step, "Start" 200, represents the beginning of the message handling process. The message handler checks if there is a message received in step 201.

[0091] If a message has been received, the message handler then checks to see what type of message it is, among many possible types, as indicated in steps 202-212. After the message handler determines the type of message, an appropriate response is queued and the system returns to step 201 and checks for additional messages. If the message is a broadcast response message from a player 202, then the

message handler queues the broadcast response message 203. If the message is a query response message from a player 204, then the message handler queues the query response message in step 205. If the message is a poll response message from a player 206, then the message handler queues the poll response message in step 207. If the message is a playlist response message from a player 208, then the message handler queues the playlist response message in step 209. If the message is a content response message from a player 210, then the message handler queues the content response message in step 211. If the message is a content acknowledge message from a player 212, then the message handler queues the content acknowledge message in step 213. If the message was none of those previously checked for, the message handler handles or queues any other messages as necessary 214.

[0092] Audio Gateway Discovery Flow

[0093] Discovery of mobile digital audio players 115 and fixed digital audio players 116 within range of the audio gateway, on the wireless network or wireless communication platform 104, is an important capability with respect to this invention. FIG. 17 provides the flow diagram for discovery by the audio gateway of mobile digital audio players 115 and fixed digital audio players 116. In this example, the audio gateway discovery handler is a continuously running process. The step "Start" 220, represents the beginning of the discovery handling process. In order to get a message response from the mobile digital audio players 115 and fixed digital audio players 116, the discovery handler sends a broadcast for players message in step 221. The discovery handler then waits, with a timeout, for example, 5 seconds, for a broadcast response message from any players in step 222. The discovery handler then checks if there is a player broadcast response message in the queue in step 223. If there is no response, then the discovery handler broadcasts again for players. If there is a response, then the discovery handler sends a query player message to a responding player in step 224 to get information about the type of player that has responded. The discovery handler then waits, with some timeout, for a player query response message in step 225 from the player that previously responded to the broadcast. The discovery handler then checks if there is a query response message in the queue in step 226. If there is no response, then the discovery handler broadcasts again for players. If there is a response, then the discovery handler checks the information returned in the query response message to see if the player is already known in step 227. If the player is already known, then the discovery handler broadcasts again for players. However, a player is unlikely to respond to a broadcast from an audio gateway when the player and audio gateway already know about each other. If the player is not already known, then the discovery handler adds the player to the list of players in proximity in step 228 of the audio gateway. Finally, the discovery handler flags the new player in proximity for playlist continuation in step 229 and for content synchronization in step 230. This allows the playlist continuation handler in the audio gateway to capture the current playlist and current selection from this new player for possible broadcast to other players. Also, this allows the content synchronization handler in the audio gateway to automatically download digital audio content and other information 101 cached on the audio gateway to the new player.

[0094] Audio Gateway Dropout Detection Flow

[0095] The flow diagram for audio gateway detection of dropout of players is shown in **FIG. 18**. The dropout detection handler in the audio gateway polls players that are known to be in proximity in order to see if any of the players has possibly gone out of range of the wireless network or wireless communication platform **104** or has been turned off. In this example, the dropout detection handler is a continuously running process. The step, "Start"**240**, represents the beginning of the dropout detection handling process. The dropout detection handler checks the list of players in proximity **241** maintained by the audio gateway. If there are players in proximity as determined in step **242**, then the dropout detection handler sends a poll message to the next player in proximity in the proximity list in step **243**. This allows all the players in the list of players in proximity to be checked in a sequential manner. Then the dropout detection handler waits, with some timeout, for a poll response message from the player in step **244** that was sent the poll message in step **243**. If there is no poll response message from the player in the queue in step **245** then the dropout detection handler checks if the player is already flagged as possibly being out of range in step **246** of the wireless network or wireless communication platform **104**. If the player is not already flagged as possibly out of range **246**, then the dropout detection handler flags that the player is possibly out of range in step **247** and checks the list of players in proximity again. If the player is already flagged as possibly out of range in step **246**, then the dropout detection handler removes the player from the list of players in proximity in step **248** and checks the list of players in proximity in step **241** again. If the player poll response message is in the queue in step **245**, then the dropout detection handler clears the possibly out of range flag in step **249** for the player in the list of players in proximity. Next, the dropout detection handler checks if the player is requesting content synchronization in step **250**, based on information passed in the poll response message from the player. If the player is requesting content synchronization, then the dropout detection handler flags the player for content synchronization in step **251** in the list of players in proximity. The content synchronization handler uses this information when deciding which players to update for digital audio content and other information **101**. Once the player is flagged for content synchronization or the player is not requesting content synchronization, then the dropout detection handler checks if the player is requesting playlist continuation in step **252**, based on information passed in the poll response message from the player. If the player is requesting playlist continuation, then the dropout detection handler flags the player for playlist continuation in step **253** in the list of players in proximity. The playlist continuation handler uses this information when deciding which players to update the playlist and current selection for. Once the player is flagged for playlist continuation in step **253** or the player is not requesting playlist continuation in step **252**, then the dropout detection handler checks the list of players in proximity in step **241** again.

[0096] Audio Gateway Content Synchronization Flow

[0097] The flow diagram for audio gateway content synchronization is shown in **FIG. 19**, with content synchronization being a key capability of the invention. The content synchronization handler in the audio gateway checks for

players that need content synchronization. Content synchronization involves updating or adding digital audio content and other information **101** to a player when the audio gateway has digital audio content and other information **101** that is not contained on the player. This may be handled automatically when the player has recently been discovered as being in proximity by the gateway discovery handler or the player directly requests content synchronization through poll response messages to the gateway. In this example, the content synchronization handler is a continuously running process. The step, "Start"**260**, represents the beginning of the content synchronization handling process. The content synchronization handler checks the list of players in proximity in step **261** maintained by the gateway. If there are players in proximity flagged for content synchronization in step **262**, then the content synchronization handler sends a query player for content message to the player in step **263** that is flagged for content synchronization. Next, the content synchronization handler waits, with some timeout, for a player content response message in step **264**. If there is no content response message in the queue in step **265** from the player that was sent the query player for content message in step **263**, then the content synchronization handler clears the content synchronization flag for the player in the proximity list in step **266** and checks the list of players in proximity again. If there is a content response message in the queue in step **265** from the player that was sent the query player for content message, then the gateway compares the digital audio content in the player with the digital audio content in the gateway in step **267**. The player's digital audio content information is contained in the content response message sent to the gateway by the player. Next, the content synchronization handler checks if there is any content in the gateway that is not on the player in step **268**. If the player content is properly synchronized with the gateway, then the content synchronization handler clears the content synchronization flag for the player in the proximity list and checks the list of players in proximity in step **261** again. If there is content on the gateway that is not on the player in step **268**, then the content synchronization handler checks if there is storage on the player for the new content in step **269**. The available storage on the player is provided in the content response message that the player sent to the gateway. If there is not sufficient storage on the player for the new content in step **269**, then the content synchronization handler clears the content synchronization flag for the player in the proximity list in step **266** and checks the list of players in proximity in step **261** again. If there is storage on the player for the new content as determined in step **269**, then the content synchronization handler sends the content data to the player in step **270**. Next, the content synchronization handler waits, with some timeout, for the content acknowledge message from the player in step **271**. If there is no content acknowledge message in the queue in step **272**, then the content synchronization handler clears the content synchronization flag for the player in the proximity list in step **266** and checks the list of players in proximity in step **261** again. If there is a content acknowledge message in the queue from the player, then the content synchronization handler checks to see, from the compare of content in the player with content in the gateway, if there is more content to send to the player in step **273**. If there is more content to send to the player then the content synchronization handler checks again if there is storage on the player for the new content in step **269**, and so on until

there is no more content to pass from the gateway to the player. If there is no more content to send to the player, then the content synchronization handler clears the content synchronization flag for the player in the proximity list in step 266 and checks the list of players in proximity in step 261 again.

[0098] Audio Gateway Playlist Continuation Flow

[0099] The flow diagram for audio gateway playlist continuation is shown in FIG. 20, with playlist continuation being a key capability of the invention. The playlist continuation handler in the audio gateway checks for propagation of the playlist and current playlist selection from one mobile digital audio player 115 or fixed digital audio player 116 to all other mobile digital audio players 115 and fixed digital audio players 116 in proximity. Playlist continuation involves seamless continuation of playback of digital audio content 101 from a particular playlist as a user moves from one mobile digital audio player 115 or fixed digital audio player 116 to another. This may be handled automatically when the gateway discovery handler discovers a player as being in proximity, where the player is currently playing digital audio content 101. The player itself may also directly request playlist continuation through poll response messages to the gateway.

[0100] In this example, the playlist continuation handler is a continuously running process. The step, "Start"280, represents the beginning of the playlist continuation handling process. The playlist continuation handler checks the list of players in proximity in step 281 maintained by the gateway. If there are players in proximity flagged for playlist continuation in step 282, then the playlist continuation handler sends a query player for playlist message to the player in step 283 that is flagged for playlist continuation. Next, the playlist continuation handler waits, with some timeout, for a player playlist response message in step 284. If there is no playlist response message in the queue in step 285 from the player that was sent the query player for playlist message in step 283, then the playlist continuation handler clears the playlist continuation flag for the player in the proximity list in step 286 and checks the list of players in proximity again. If there is a playlist response message in the queue as determined in step 285 from the player that was sent the query player for playlist message in step 283, then the gateway checks the playlist response message to see if the playlist and current position within the playlist, both of which are contained in the playlist response message, are valid in step 287. If the playlist and current position are not valid, then the playlist continuation handler clears the playlist continuation flag for the player in the proximity list in step 286 and checks the list of players in proximity again. If the playlist and current position in the playlist are valid as determined in step 287, then the playlist continuation handler checks the list of players in proximity in step 288. If there are any other players in proximity as determined in step 289, then the playlist continuation handler sends a broadcast playlist and current position message to all other players in proximity in step 290. After the playlist continuation handler sends a broadcast playlist and current position message to all other players in proximity in step 290 or if there are no other players in proximity, then the playlist continuation handler clears the playlist continuation flag for the player in the proximity list in step 286 and checks the list of players in proximity in step 281 again.

[0101] Player Software

[0102] FIGS. 21-27 provide flow diagrams for the various digital audio players. In these flow diagrams, the software is assumed to be running in a multitasking environment, with each of the flow diagrams representing a particular independently running task or process. However, it should be noted that these flow diagrams represent only one of many different ways to implement the key software functionality for the player and that many other implementations are possible, including those which do not require a multitasking environment.

[0103] Player Message Handling Flow

[0104] FIG. 21 is a flow diagram of the message handler for a player. In general, the message handler takes the messages received from computing platforms 103 acting as audio gateways and from other mobile digital audio players 115 and fixed digital audio players 116, on a wireless network or wireless communication platform 104, and queues these messages for use by other processes or handles them itself, depending on the message type. In this example, the message handler is a continuously running process. The step, "Start"300, represents the beginning of the message handling process. The message handler checks if there is a message received in step 301. If there is a message received, the message handler then checks to see what type of message it is, among many possible types.

[0105] After the message handler determines the type of message an appropriate response is queued and the system returns to step 301 and checks for additional messages. If the message is a broadcast for players message from a gateway as determined in step 302, then the message handler queues the broadcast for players message in step 303. After the message handler queues the broadcast for players message in step 303, the message handler checks for more messages. If the message is a query player message from a gateway as determined in step 304, then the message handler queues the query player message in step 305. After the message handler queues the query player message in step 305, the message handler checks for more messages. If the message is a poll message from a gateway as determined in step 306, then the message handler queues the poll message in step 307. After the message handler queues the poll message in step 307, the message handler checks for more messages. If the message is a query player for content message from a gateway as determined in step 308, then the message handler queues the query player for content message in step 309. After the message handler queues the query player for content message in step 309, the message handler checks for more messages. If the message is content data from a gateway in step 310, then the message handler stores the content in local player storage in step 311. The message handler also sends a content acknowledge message to the gateway in step 312. After the message handler sends a content acknowledge message to the gateway in step 312, the message handler checks for more messages. If the message is a query player for playlist message from a gateway as determined in step 313, then the message handler queues the query player for playlist message in step 314. After the message handler queues the query player for playlist message in step 314, the message handler checks for more messages. If the message is a broadcast playlist message from a gateway as determined in step 315, then the message handler queues the

broadcast playlist message in step 316. After the message handler queues the broadcast playlist message in step 316, the message handler checks for more messages. Finally, if the message was none of those previously checked for, the message handler handles or queues any other messages as necessary in step 317 and then the message handler checks for more messages.

[0106] Player Discovery Flow

[0107] Discovery by the audio gateway of mobile digital audio players 115 and fixed digital audio players 116 is an important capability with respect to this invention. FIGS. 22 and 23 provide the flow diagrams for discovery responses by the player when the player detects discovery attempts by an audio gateway. In this example, the player discovery broadcast response handler and the player discovery query response handler are continuously running processes. The step, "Start"320, represents the beginning of the discovery broadcast response handling process. The discovery broadcast response handler first checks for a broadcast for players message in the queue in step 321 from a gateway. If there is a broadcast for players message in the queue as determined in 322, then the discovery broadcast response handler checks if the gateway is already in proximity of the player in step 323. The discovery broadcast response handler is able to get information about the gateway from the broadcast for players message received from the gateway and can compare that information with information saved by the discovery query response handler for any gateway in proximity. If the gateway is not already in proximity as determined in step 323, then the discovery broadcast response handler sends a broadcast acknowledge message to the gateway in step 324. After the discovery broadcast response handler sends the broadcast acknowledge message to the gateway in step 324, or if the gateway is already in proximity as determined in step 323, or if there is no broadcast for players message in the queue as determined in step 322, then the discovery broadcast response handler checks for a broadcast for players message in the queue again.

[0108] The step, "Start"330 (FIG. 23), represents the beginning of the discovery query response handling process. The discovery query response handler first checks for query player messages from a gateway in the queue in step 331. If there is a query player message in the queue as determined in step 332, then the discovery query response handler sends a query response message to the gateway in step 333 that sent the query player message. Then the discovery query response handler saves that the gateway is in proximity in step 334 from information obtained from the query player message from the gateway. After the discovery query response handler saves that the gateway is in proximity as determined in step 334 or if there is no query player message in the queue as determined in step 332, then the discovery query response handler checks for a query player message from a gateway in the queue again.

[0109] Player Dropout Detection Flow

[0110] The flow diagram for player dropout detection of an audio gateway is shown in FIG. 24. The dropout detection handler in the player watches for poll messages from an audio gateway in order to see if the player has gone out of range of the gateway. In this example, the player dropout detection handler is a continuously running process. Step, "Start"340, represents the beginning of the player dropout

detection handling process. The player dropout detection handler checks if the player is in proximity of a gateway in step 341. The player discovery query response handler, shown in FIG. 23, saves information about a gateway that is in proximity. If the player is not in proximity of a gateway as determined in step 341, then the player dropout detection handler just continues to check if the player is in proximity of a gateway. If the player is in proximity of a gateway as determined in step 341, then the player dropout detection handler waits, with some timeout, for a poll response message from the gateway in step 342 that is in proximity. The timeout period is significantly more than the polling period used by the gateway. If there is not a poll message in the queue as determined in step 343 from the gateway that is in proximity, then the player dropout detection handler checks if the gateway is already flagged as possibly out of range in step 344. If the gateway is not already flagged as possibly out of range as determined in step 344, then the player dropout detection handler flags that the gateway is possibly out of range in step 345 and then continues to check if the player is in proximity of a gateway in step 341. If the gateway is already flagged as possibly out of range as determined in step 344, then the player dropout detection handler removes the gateway as being in proximity in step 346 and then continues to check if the player is in proximity of a gateway in step 341. If there is a poll message in the queue as determined in 343 from the gateway that is in proximity, then the player dropout detection handler checks if the user requested content synchronization of the player in step 347. If the user did request content synchronization of the player as determined in step 347, then the player dropout detection handler flags a content synchronization request in the poll response message in step 348 to the gateway in proximity. If the user did not request content synchronization of the player, then the player dropout detection handler skips flagging of content synchronization in the poll response message in step 348. Next, the player dropout detection handler checks if the user requested playlist continuation for the player in step 349. If the user did request playlist continuation for the player as determined in step 349, then the player dropout detection handler flags a playlist continuation request in the poll response message in step 350 to the gateway in proximity. If the user did not request playlist continuation for the player as determined in step 349, then the player dropout detection handler skips flagging of playlist continuation in the poll response message in step 350. Next, the player dropout detection handler sends the poll response message to the gateway in step 351 that is in proximity and sent the poll message. Next, the player dropout detection handler clears the gateway possibly out of range flag in step 352 if it was set for the gateway in proximity. Then the player dropout detection handler continues to check if the player is in proximity of a gateway as determined in step 341.

[0111] Player Content Synchronization Flow

[0112] The flow diagram for player content synchronization response is shown in FIG. 25, with content synchronization being a key capability of the invention. The content synchronization response handler in the player responds to content queries from a gateway. In this example, the content synchronization response handler is a continuously running process. The step, "Start"360, represents the beginning of the content synchronization response handling process. The content synchronization response handler checks for a query

player content message in the queue in step 361 from a gateway. If there is a query player content message in the queue as determined in step 362, then the content synchronization response handler builds a content response message by first getting a list of all the digital audio content on the player in 363. Next, the content synchronization response handler determines the amount of available storage space on the player in step 364 for additional digital audio content. Finally, the content synchronization response handler sends a player content response message in step 365 to the gateway that sent the query player content message. The player content response message contains the list of all the digital audio content on the player as well as the amount of available space on the player. Once the content synchronization response handler sends a player content response message, as determined in step 365, to the gateway that sent the query player content message or there is no query player content message in the queue in step 362, then the content synchronization response handler checks for a query player content message in the queue again.

[0113] Player Playlist Continuation Flow

[0114] FIGS. 26 and 27 represent flow diagrams for playlist continuation response and playlist continuation updating by the player when the player detects playlist continuation query and updating attempts by an audio gateway. Playlist continuation is a key capability of the invention. In this example, the player playlist response handler and the player playlist update handler are continuously running processes. The step, "Start"380, represents the beginning of the playlist response handling process. First, the playlist response handler checks for a query player for playlist message in the queue in step 381 from a gateway in proximity. If there is a query player for playlist message in the queue as determined in step 382, then the playlist response handler gets the current playlist and current position within the playlist in step 383 and puts this information in a playlist response message. Next, the playlist response handler sends the playlist response message to the gateway in step 384 that sent the query player for playlist message. After the playlist response handler sends the playlist response message to the gateway as determined 384 or there is not a query player for playlist message in the queue as determined in step 382, then the playlist response handler checks for a query player for playlists message 381 in the queue again.

[0115] The step, "Start"390 (FIG. 27), represents the beginning of the playlist update handling process. First the playlist update handler checks for a broadcast playlist message in step 391 in the queue from a gateway in proximity. If there is not a broadcast playlist message in the queue as determine in step 392, then the playlist update handler just

checks for a broadcast playlist message in the queue again. If there is a broadcast playlist message in the queue, as determined in step 392, then the playlist update handler checks if the playlist already exists on the player in step 393. The playlist information is found in the broadcast playlist message. If the playlist already exists on the player, as determined in step 393, then the playlist update handler activates the playlist and sets the current position within the playlist in step 394 on the player. The current position within the playlist is found in the broadcast playlist message. Then the playlist update handler checks for a broadcast playlist message in step 391 in the queue again. If the playlist does not already exist on the player as determined in step 393, then the playlist update handler saves the new playlist on the player in step 395. Next, the playlist update handler checks if the player is currently playing in step 396. If the player is not currently playing, then the playlist update handler sets the new playlist as the current playlist in step 397 and sets the current position within the playlist in step 394. If the player is currently playing, then the playlist update handler notifies the user that a new playlist is available in step 398. This allows the user to decide to play the new playlist or continue with a current playlist. Next, the playlist update handler checks for a broadcast playlist message in step 391 in the queue again.

[0116] Obviously, many modifications and variations of the present invention are possible in light of the above teachings. Thus, it is to be understood that, within the scope of the appended claims, the invention may be practiced otherwise than as specifically described above.

What is claimed and desired to be covered by a Letters Patent is as follows:

1. A digital playback device comprising:

a processor coupled to said system bus for executing software instructions;

one or more storage devices, coupled to said system bus;

a wireless communication platform coupled to said system bus for wirelessly receiving digital signals and directing said digital signals to said system bus; and

a decoder for decoding digital signals and generating decoded digital signals.

2. The digital playback device as recited in claim 1, further including a digital to analog converter coupled to said decoder for converting said decoded signals to analog signals.

3. The digital playback device as recited in claim 2, further including a user input interface coupled to said system bus.

* * * * *