



US007313384B1

(12) **United States Patent**
Meenan et al.

(10) **Patent No.:** **US 7,313,384 B1**
(45) **Date of Patent:** **Dec. 25, 2007**

(54) **CONFIGURING WIRELESS DEVICES**

(75) Inventors: **Patrick Meenan**, Gainesville, VA (US);
David Clyde Chiles, Mitchellville, MD (US)

(73) Assignee: **AOL LLC, a Delaware Limited Liability Company**, Dulles, VA (US)

(*) Notice: Subject to any disclaimer, the term of this patent is extended or adjusted under 35 U.S.C. 154(b) by 521 days.

(21) Appl. No.: **10/284,466**

(22) Filed: **Oct. 31, 2002**

(51) **Int. Cl.**
H04M 1/68 (2006.01)

(52) **U.S. Cl.** **455/410; 455/411; 709/228**

(58) **Field of Classification Search** **455/404.1, 455/410, 411, 406; 370/338; 725/25, 89; 709/228**

See application file for complete search history.

(56) **References Cited**

U.S. PATENT DOCUMENTS

5,826,000	A	10/1998	Hamilton
5,852,722	A	12/1998	Hamilton
6,314,459	B1	11/2001	Freeman
6,360,264	B1	3/2002	Rom
6,615,166	B1	9/2003	Guheen et al.
6,633,761	B1	10/2003	Singhal et al.
6,640,291	B2	10/2003	Fujibayashi et al.
6,735,691	B1	5/2004	Capps et al.
6,744,753	B2 *	6/2004	Heinonen et al. 370/338
6,795,835	B2	9/2004	Ricart et al.
6,834,341	B1	12/2004	Bahl et al.
6,854,009	B1	2/2005	Hughes
6,885,859	B2	4/2005	Karaoguz et al.
6,931,018	B1	8/2005	Fisher
6,961,762	B1	11/2005	Yeap et al.
6,985,931	B2	1/2006	Dowling
7,042,988	B2	5/2006	Juitt et al.

7,058,719	B2	6/2006	Motoyama
7,113,794	B2	9/2006	Annamalai
2002/0059434	A1 *	5/2002	Karaoguz et al. 709/228
2002/0132605	A1 *	9/2002	Smeets et al. 455/411
2003/0050041	A1 *	3/2003	Wu 455/406
2003/0061077	A1	3/2003	Sagar
2003/0220091	A1 *	11/2003	Farrand et al. 455/404.1
2004/0250273	A1 *	12/2004	Swix et al. 725/25
2004/0261112	A1 *	12/2004	Hicks et al. 725/89

OTHER PUBLICATIONS

SonicWALL GMS Standard Edition Internet Security; http://www.sonicwall.com/products/gm_standard.html; pp. 1-4; date printed Feb. 27, 2004.

SonicWALL Global Management System Introduction Guide, Standard Edition, Version 2.5, pp. 1-36; 2003.

SonicWall Global Management System Configuration Guide, Standard Edition, Version 2.5 pp. 1-257; 2003.

* cited by examiner

Primary Examiner—Joseph Feild

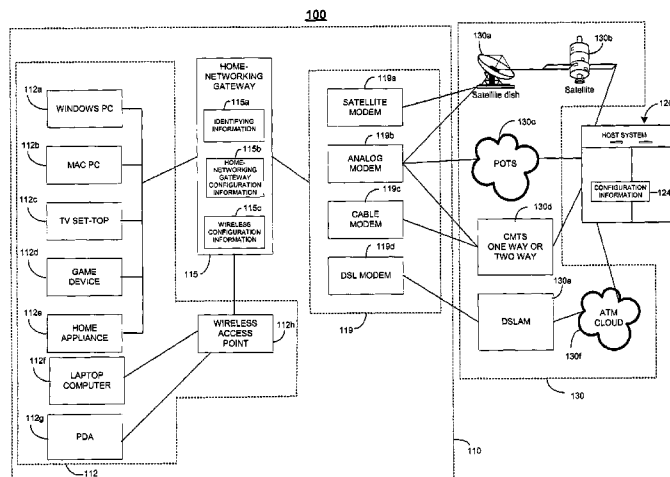
Assistant Examiner—Phuoc Doan

(74) *Attorney, Agent, or Firm*—Fish & Richardson P.C.

(57) **ABSTRACT**

Techniques are provided for the configuration of a home-networking system. Home-networking configuration information may be stored on a host system in a manner accessible to the home-networking system and migrated to a home-networking gateway or router that has not yet been configured. Wireless configuration information may be stored on a home-networking gateway or router and used to configure one or more wireless access points through the use of a physical connection, such as a wired communications pathway. One or more wireless home-networking devices may be configured based on wireless configuration information stored in a central repository on a host system or a home-networking system. The wireless configuration information may be accessible only through the use of a security code.

38 Claims, 7 Drawing Sheets



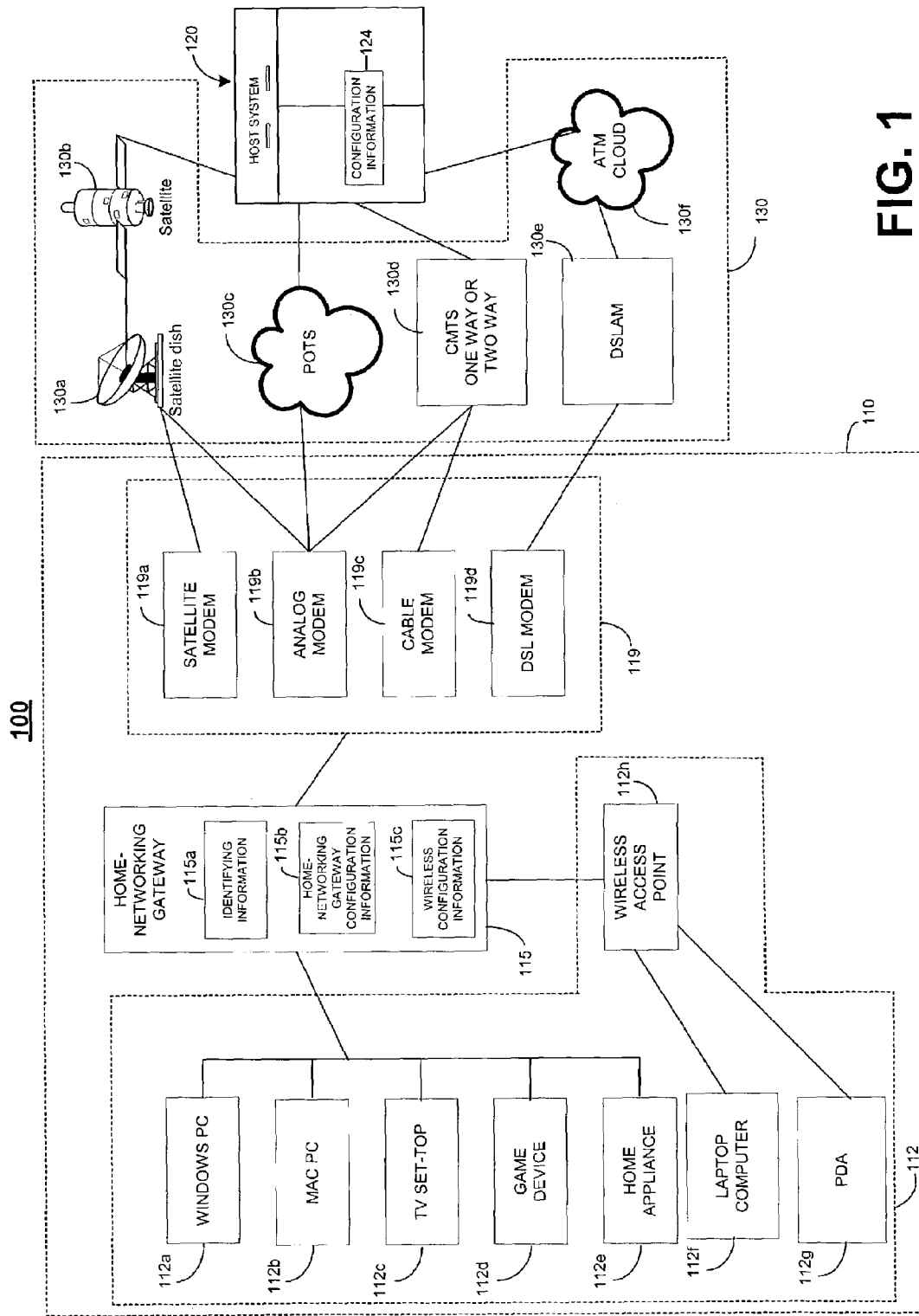


FIG. 1

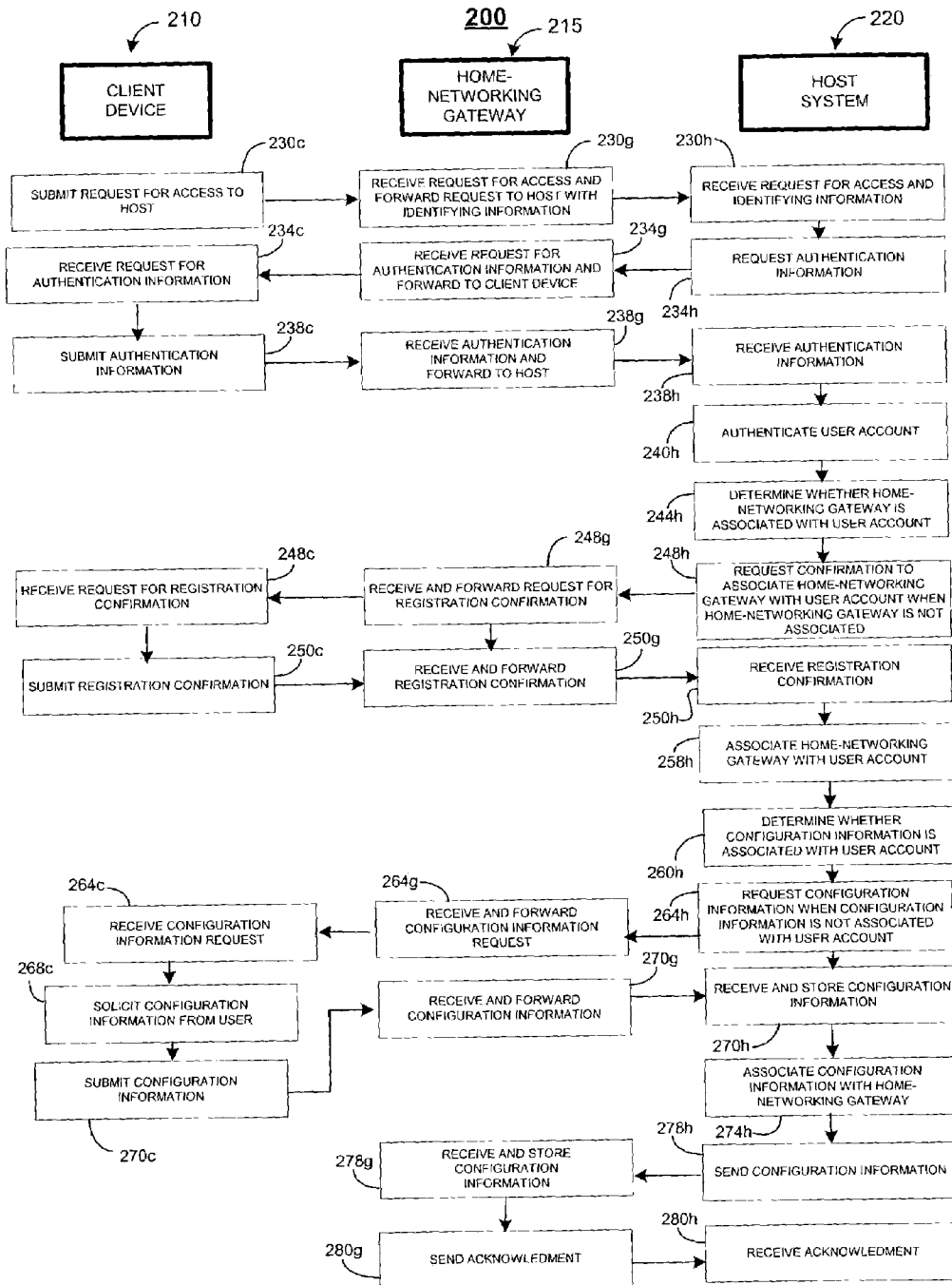


FIG. 2

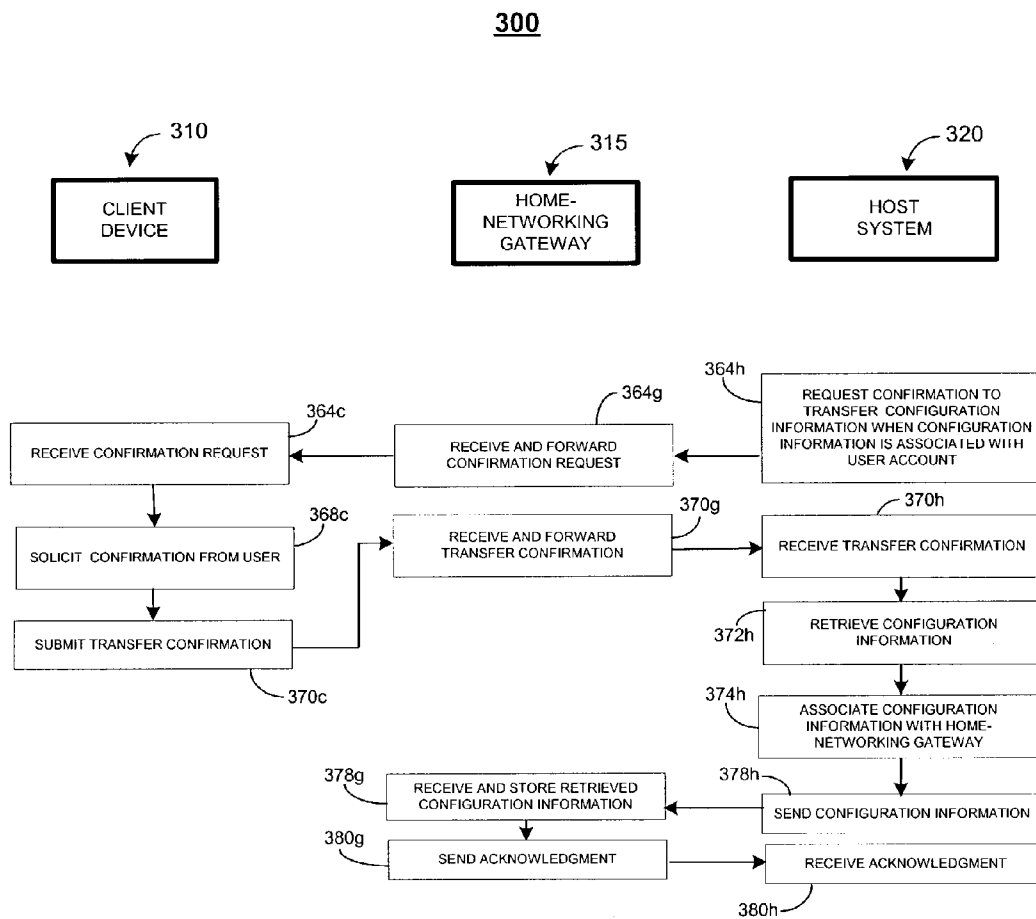


FIG. 3

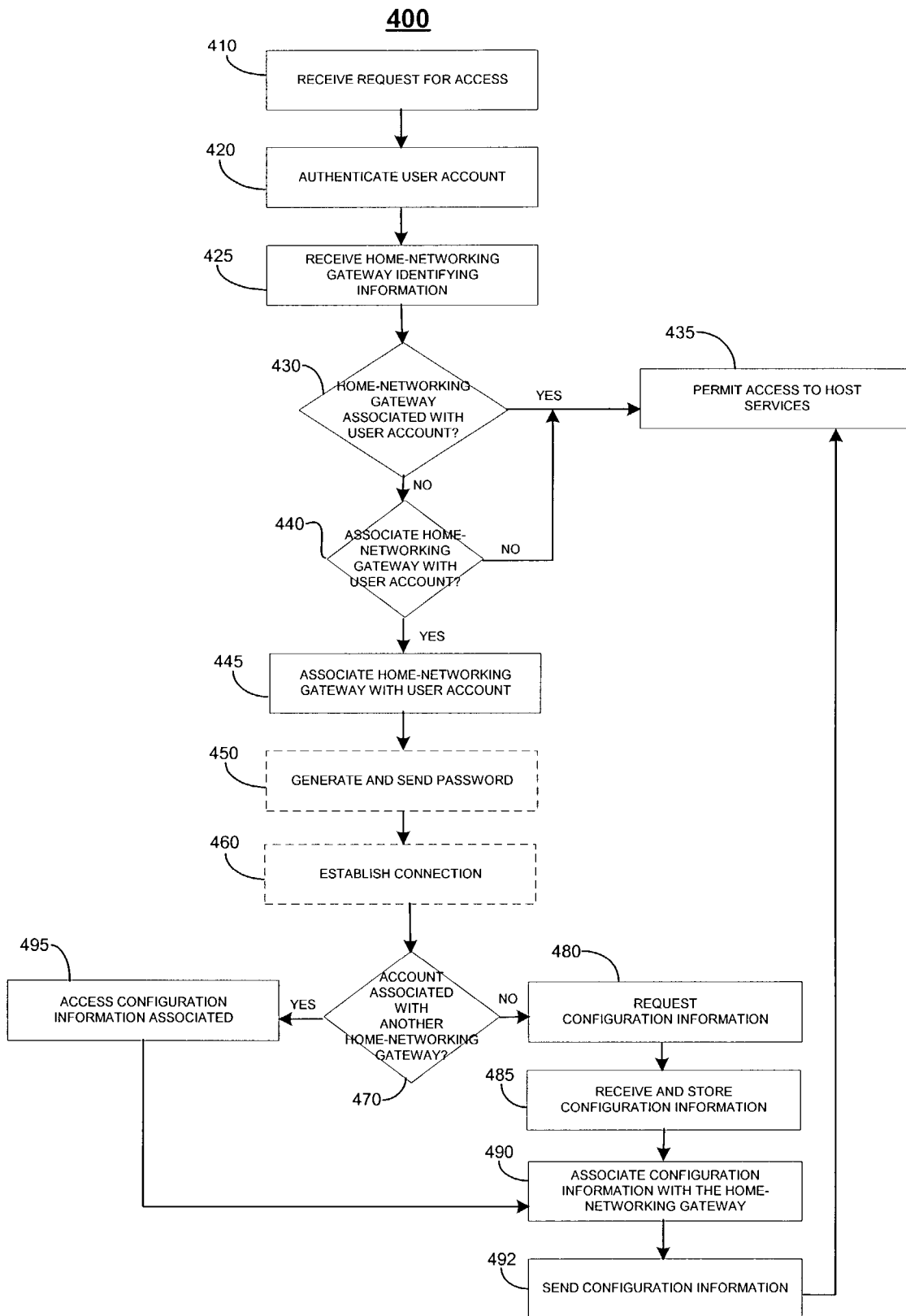


FIG. 4

500

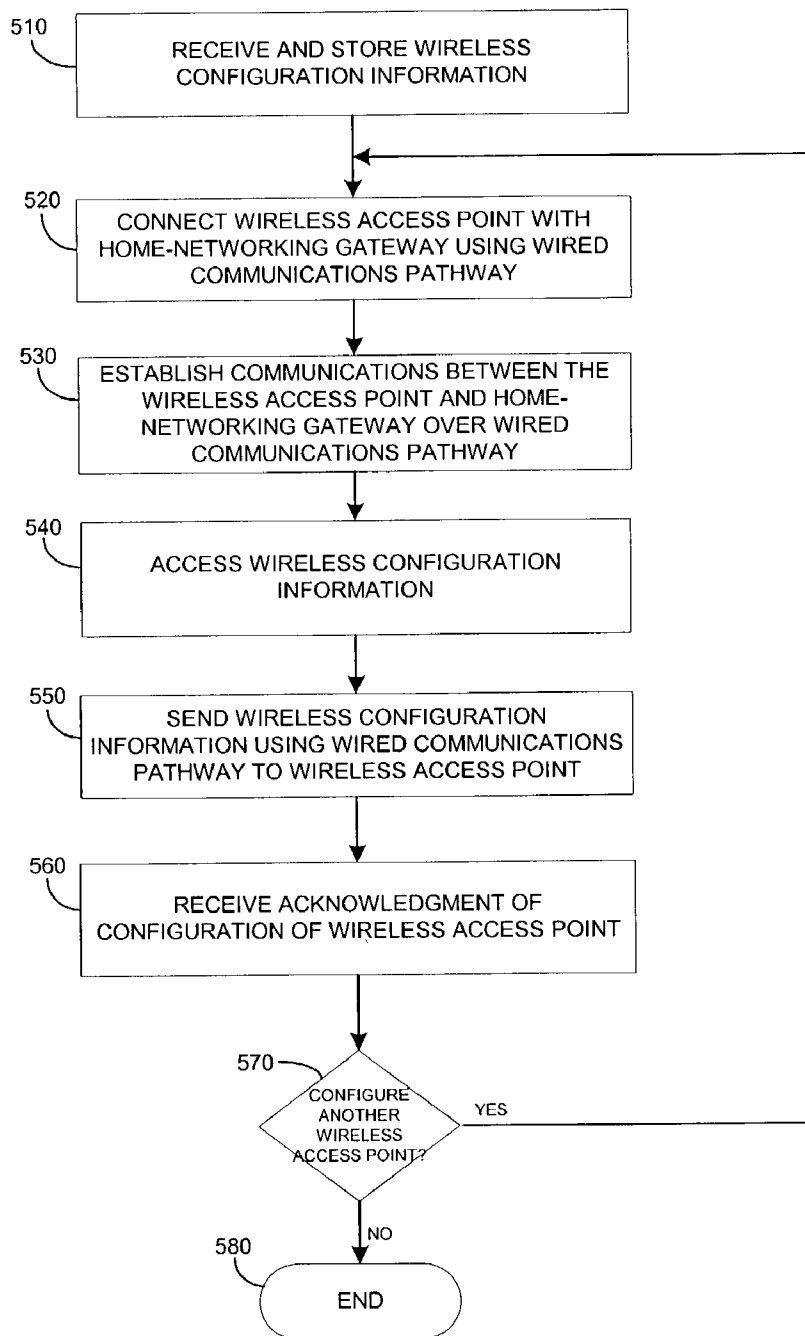


FIG. 5

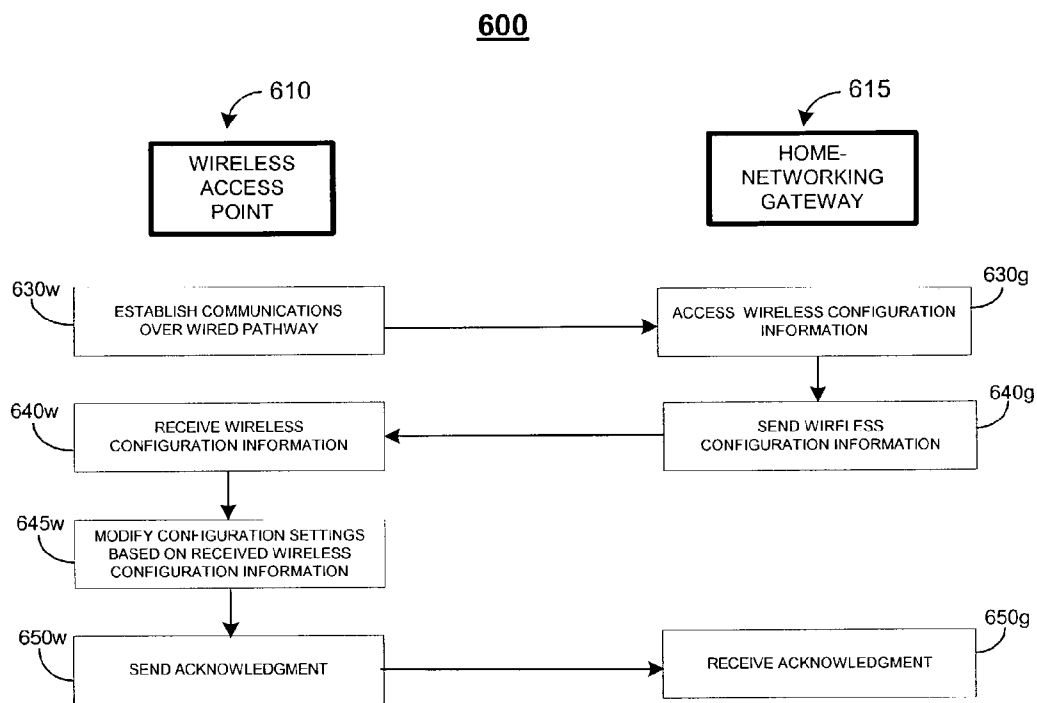


FIG. 6

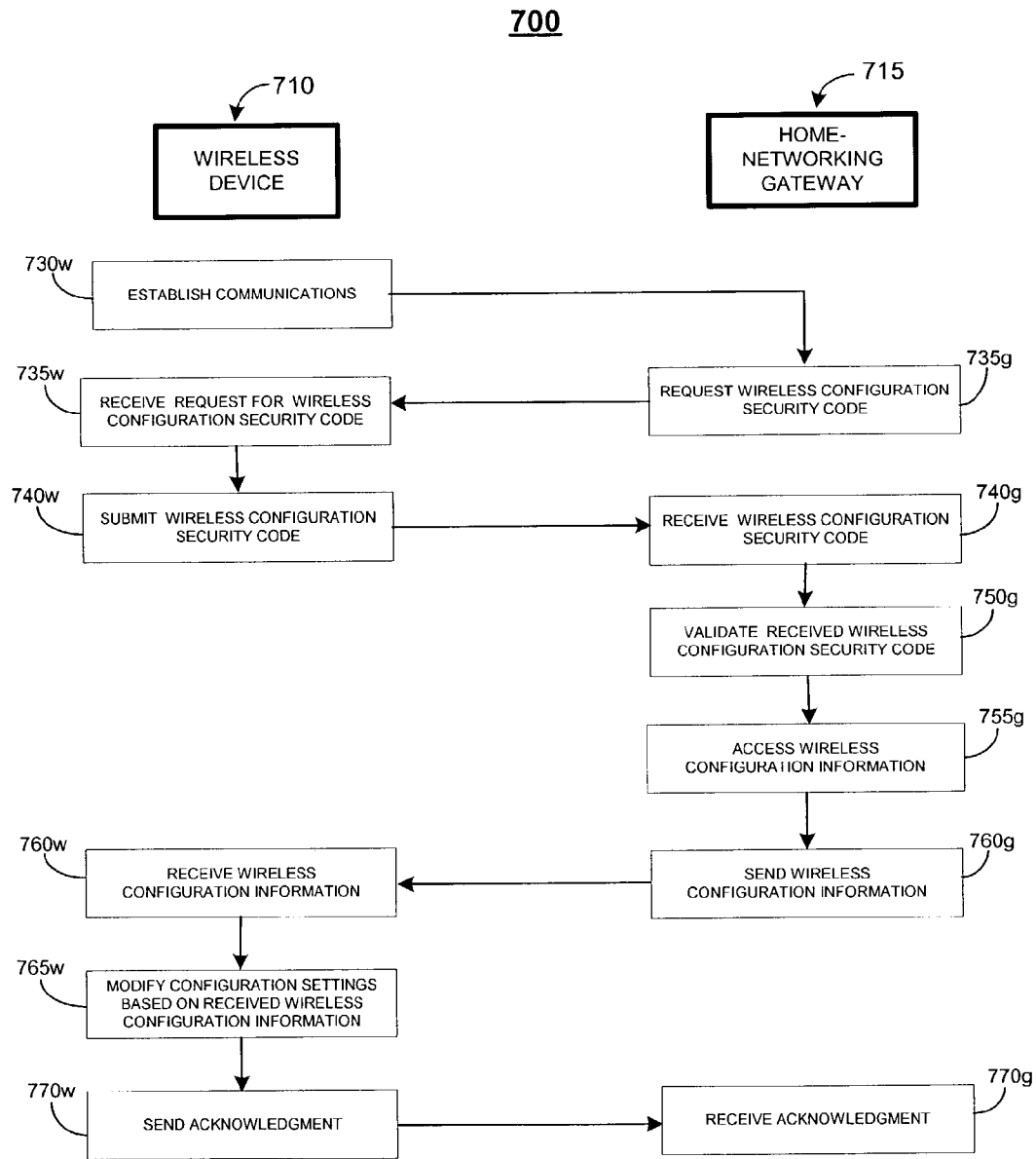


FIG. 7

CONFIGURING WIRELESS DEVICES

TECHNICAL FIELD

This description relates to the configuration of a home network of computing devices.

BACKGROUND

In a home network of computing devices, a device on the network typically is set up or configured with particular information that enables communications with the other devices on the network. For instance, in a household that includes more than one personal computing device or digital entertainment device, a network may include a router that is configured to operate with each device and to direct communications between the devices. When a network includes wireless communications, the wireless devices and the wireless access points that connect the wireless devices to the network typically are configured to communicate using a common set of wireless parameters or settings.

SUMMARY

In one general aspect, configuring a wireless device includes establishing a communications session over a wired connection between a wireless device and a home-networking gateway. A security code is received, and a trusted security code is accessed. The received security code is authenticated using a trusted security code. Only when the received security code is valid, wireless configuration information is accessed using the home-networking gateway and sent to the wireless device. The wireless device is configured based on the accessed and sent configuration information.

Implementations may include one or more of the following features. For example, establishing a communications session and sending the accessed wireless configuration information may be repeated with more than one wireless device.

The wireless configuration information may include a security key and a network name. The wireless configuration information may be stored on the home-networking gateway. The trusted security code may be physically associated with the home-networking gateway. The trusted security code may be preprogrammed into the home-networking gateway or may be stored in firmware of the home-networking gateway. The trusted security code may be stored on a removable storage device or a hardware key accessible to the home-networking gateway.

In another general aspect, configuring a wireless device includes making a removable storage accessible to a home-networking gateway. Wireless configuration information is accessed using the home-networking gateway. The accessed wireless configuration information is stored on the removable storage. The removable storage is made accessible to a wireless device, and the wireless configuration information is stored on the removable storage. The wireless device is configured based on the configuration information stored on the removable storage.

Implementations may include one or more of the following features. For example, the removable storage may be associated with a wireless communications card, and the wireless device may be configured by inserting the wireless communications card into the wireless device. The removable storage may be removable magnetic media, removable optical media, or removable solid state storage media.

Implementations of the techniques discussed above may include a method or process, an apparatus or system, or computer software on a computer-accessible medium.

The details of one or more implementations set forth in the accompanying drawings and the description below. Other features will be apparent from the description and drawings, and from the claims.

DESCRIPTION OF DRAWINGS

FIG. 1 is a block diagram illustrating an exemplary communications system capable of configuring devices used in a home network.

FIGS. 2 and 3 are block diagrams illustrating communications between a client device, a home-networking gateway, and a host system to configure the home networking gateway.

FIG. 4 is a flow chart of a process performed to configure a home networking gateway.

FIG. 5 is a flow chart of a process performed to configure one or more wireless access points.

FIG. 6 is a block diagram illustrating communications between a wireless access point and a home-networking gateway to configure the wireless access point.

FIG. 7 is a block diagram illustrating communications between a wireless device and a home-networking gateway to configure the wireless device.

Like reference symbols in the various drawings indicate like elements.

DETAILED DESCRIPTION

Techniques are provided for the configuration of a home-networking system and/or particular components of such a system. Home-networking configuration information may be stored on a host system accessible to the home-networking system and migrated to a home-networking gateway or a router that has not yet been configured. Wireless configuration information stored on or accessible to a home-networking gateway or a router may be used to configure one or more wireless access points, generally through the use of a physical connection, such as a wired communications pathway. One or more wireless home-networking devices may be configured based on wireless configuration information stored in a central repository of the host system or the home-networking system. The wireless configuration information may be accessible only through the use of a security code.

Referring to FIG. 1, a home networking system 100 includes multiple home-networked devices 112 ("devices") connected to each other and to a home-networking gateway 115. The home-networking gateway 115 is connected to a host system 120 through a communication device 119 over communication links 130.

The home networking system 100 enables the devices 112 to communicate with the host system 120 through the home-networking gateway 115 using the single communication device 119. The devices 112, the home-networking gateway 115, and the communication device 119 may be included in a home network 110 physically located in a personal residence (e.g., a single-family dwelling, a house, a townhouse, an apartment, or a condominium). The home-networking gateway 115 generally is local to the home network 110. The home-networking gateway 115 is located logically between the devices 112 and a host system 120 that is external to the home network 110. The host system 120 may be, for example, an Internet access provider device, an

Internet service provider device, an online host system proxy server, or another external system device.

The devices **112** and the home-networking gateway **115** typically are located in a physical place that enables the home-networking gateway **115** to network with the devices **112**. In one implementation, for example, the home-networking gateway **115** is physically located in a personal residence, and the devices **112** are physically located such that communications with the home-networking gateway **115** are enabled and maintained. For instance, when the home-networking gateway **115** is physically located in a personal residence, the devices **112** also may be physically located in the personal residence. However, the location of the home-networking gateway **115** in the personal residence does not necessarily preclude one or more of the devices **112** from being networked to the home-networking gateway **115** from a remote location. Similarly, the location of the home-networking gateway in the personal residence does not necessarily preclude use of one or more of the devices **112** from outside of the personal residence or communication by those devices with the host system **120** through the home-networking gateway **115**. For instance, the devices **112** may include one or more portable computing devices that may be taken outside of the personal residence and still remain connected through a wireless access point to the home-networking gateway **115** located within the personal residence.

The devices **112** may include one or more general-purpose computers (e.g., personal computers), one or more special-purpose computers (e.g., devices specifically programmed to communicate with the home-networking gateway **115** and/or the host system **120**), or a combination of one or more general-purpose computers and one or more special-purpose computers. Other examples of devices **112** include a workstation, a server, an appliance (e.g., a refrigerator, a microwave, and an oven), an intelligent household device (e.g., a thermostat, a security system, a heating, ventilation and air conditioning (HVAC) system, and a stereo system), a device, a component, other physical or virtual equipment, or some combination of these elements capable of responding to and executing instructions within the system architecture.

FIG. 1 shows several implementations and possible combinations of devices and systems used within the home networking system **100**. For brevity, only a few illustrative elements are included in home networking system **100**.

As illustrated by FIG. 1, examples of devices **112** may include, but are not limited to, a personal computer with a Windows™ OS **112a**, a Macintosh™ personal computer **112b**, a TV set-top box **112c**, a game device **112d**, a home appliance **112e**, a laptop or otherwise portable computer **112f**, a personal digital assistant (PDA) **112g**, and a wireless access point (WAP) **112h**. Some of the devices, such as a personal computer with Windows™ OS **112a**, a Macintosh™ personal computer **112b**, a TV set-top box **112c**, a game device **112d**, and a home appliance **112e**, typically communicate with the home-networking gateway **115** through a wired network.

Some of the other devices, such as a laptop computer **112f** and a PDA **112g**, typically communicate with the home-networking gateway **115** using a wireless access point **112h**. When devices communicate using wireless access point **112h**, they may be referred to as wireless devices. Wireless devices are not limited to portable devices. For example, a desktop personal computer, such as a personal computer with a Windows™ OS **112a** or a Macintosh™ personal computer **112b**, may communicate using wireless access

point **112h**. Specifically, the wireless devices communicate over a wireless communications pathway to the wireless access point **112h**. The wireless access point **112h** is connected to home-networking gateway **115** through the wireless network and transmits communications received from wireless devices to the home-networking gateway **115**. In some implementations, the wireless access point **112h** may be a component of the home-networking gateway **115**.

A wireless communications pathway may use various protocols to communicate from a wireless devices to a wireless access point **112h**. For example, the wireless communications pathway may use wireless technology based on the Institute of Electrical and Electronics Engineers, Inc. (IEEE) 802.11 standard (such as 802.11b or 802.11a). The wireless communications pathway also may use wireless technology based on the Bluetooth approach for short range wireless communications, other personal area network (PAN) technologies, or other wireless technology, such as the HiperLan2 standard by the European Telecommunications Standards Institute (ETSI).

Some of the devices **112**, such as personal computer with Windows™ OS **112a**, Macintosh™ personal computer **112b**, laptop computer **112f**, and PDA **112g**, include software for logging on to the host system **120** using a particular user associated with the user of the device. Such devices may be referred to as client devices. Other devices, such as home appliance **112e**, may include software for logging on to host system **120** without identifying an associated user of the user of the device. Yet other devices, such as TV set-top **112c** and game device **112d**, may be configured to function either as a client device or a non-client device depending on the function being performed.

The home-networking gateway **115** may include a home gateway device, such as a gateway, a router, or another communication device. The home-networking gateway **115** also may include a digital hub capable of receiving broadcast video signals, receiving communication data (such as through a broadband connection), and distributing the signals and data to devices **112**. The home-networking gateway **115** may include another communications device and/or a home entertainment device, such as a stereo system, a radio tuner, a TV tuner, a portable music player, a personal video recorder, and a gaming device. The home-networking gateway **115** communicates with the host system **120** over communications links **130**. In some implementations, host system **120** may be an online access provider, such as an Internet access provider or an Internet service provider.

The home-networking gateway **115** typically connects to the host system **120** using a communication device **119**. Examples of the communication device **119** may include (and are not limited to) a satellite modem **119a**, an analog modem **119b**, a cable modem **119c**, and a DSL modem **119d**. The home-networking gateway **115** uses the communication device **119** to communicate through communication links **130** with the host system **120**. The communication links **130** may include various types of communication delivery systems that correspond to the type of communication device **119** being used. For example, if the home-networking gateway **115** includes a satellite modem **119a**, then the communications from a device **112** and an associated home-networking gateway **115** may be delivered to the host system **120** using a satellite dish **130a** and a satellite **130b**. The analog modem **119b** may use one of several communications links **119**, such as the satellite dish **130a** and satellite **130b**, the Plain Old Telephone Service (POTS) **130c**, and the Cable Modem Termination System (CMTS) **130d**. The cable modem **119c** typically uses the CMTS **130d** to deliver and

5

receive communications from the host system **120**. The DSL modem **119d** typically delivers and receives communications with the host system **120** through a Digital Subscriber Line Access Multiplexer (DSLAM) **130e** and an Asynchronous Transfer Mode (ATM) network **130f**.

The home networking system **100** may use various protocols to communicate between the devices **112** and the home-networking gateway **115** and between the home-networking gateway **115** and the host system **120**. For example, a first protocol may be used to communicate between the devices **112** and the home-networking gateway **115**, and a second protocol may be used to communicate between the home-networking gateway **115** and the host system **120**. In one implementation, the first protocol and the second protocol may be the same. In another implementation, the first protocol and the second protocol may be different. The home-networking gateway **115** may include different hardware and/or software modules to implement different home networking system protocols.

The home-networking gateway **115** may include identifying information **115a**, such as a MAC (“Media Access Control”) address and/or a network address, that may uniquely identify a home-networking gateway **115**. The identifying information **115a** also may include an identifier or a name assigned by the host system **120**. The home-networking gateway also may store configuration information, such as home-networking gateway configuration information **115b** and wireless configuration information **115c**. Home-networking gateway configuration information **115b** may be stored in a table or a list on the home-networking gateway **115**. The configuration information **115b** may be associated with identifying information **115a** for the home-networking gateway **115** and/or a user account that is permitted access to the host system **120**.

The home-networking gateway configuration information **115b** also may include device information for devices **112** associated with the home-network **110**. Device information may include a device identifier for a device, such as devices **112a–112h**. The device identifier may include a hardware device identifier, such as a MAC address, and/or a network address, such as a static IP address associated with the device or a dynamic IP address. The dynamic IP address may be assigned by home-networking gateway **115**, by some other network device, or by the host system **120** through the Dynamic Host Configuration Protocol or another protocol that enables the dynamic allocation of an IP address to a device on a network. The device information associated with each device may include, for example, the type of device (e.g., a client or a non-client device), the class of device (e.g., a gaming device, a personal computer, or a PDA), the type of platform (e.g., the type of hardware, such as a Macintosh™ personal computer, a Windows™-based personal computer, a PDA, a home appliance, or an entertainment device), and/or the operating environment (e.g., the operating system type and/or version).

The device information also may include a user-assigned name. The user-assigned name may be referred to as a familiar name or a nickname. For example, an identifier for a particular game device may be associated with the user-assigned name of “Billy’s game device.”

The device information also may include parental control information or other types of access restrictions that are associated with the device. For example, a stereo system or other entertainment system connected to the network may not be accessible between the hours of 11 p.m. and 6 a.m. Similarly, a gaming device may be accessible only between the hours of 4 p.m. and 8 p.m. on weekdays and between the

6

hours of 8 a.m. and 9 p.m. on a weekend day or a holiday. These types of access restrictions may be particularly beneficial when a household includes teenage children.

The home-networking gateway configuration information **115b** may include protocol information necessary to configure the home-networking gateway **115** to communicate with devices **112**. Protocol information may include protocol information that describes how to establish communication with one or more of devices **112**, how to configure the wireless access point **112h**, or how to configure wireless devices, such as the laptop computer **112f** or the PDA **112g**.

The wireless configuration information **115c** may be stored in a table or a list on the home-networking gateway **115**. The wireless configuration information **115c** may include a security key, such as a wired equivalent privacy (WEP) key that may be used to encrypt and decrypt transmitted data, and a wireless network name, such as a service set identifier (SSID) that identifies the particular network. The wireless configuration information **115c** also may include a list of devices that are permitted access to the home network. For example, the wireless configuration information **115c** may include a list of MAC addresses that uniquely identify the devices that are permitted access to the home network. The wireless configuration information **115c** also may include other configuration information, such as a level of encryption (e.g., 40-bit encryption or 128-bit encryption) associated with a WEP key. The storage of wireless configuration information **115c** may be useful for a wireless device, such as laptop computer **112f** that must maintain common configuration information with a wireless access point to enable communications with the wireless access point. For instance, a wireless device and a wireless access point may be required to maintain the following configuration information in common to enable them to communicate: a WEP key, a SSID, a list of devices that are permitted access, and a level of encryption associated with the WEP key (e.g., 40-bit encryption or 128-bit encryption).

The home-networking gateway **115** may be configured in a hub-and-spoke configuration in which the functions performed by the home-networking gateway **115** are distributed to other devices (e.g., a configuration information device) that are directed by the home-networking gateway **115**. Alternatively, for example, the home-networking gateway **115** may be configured to include both the configuration information functions and the gateway functions. The home-networking gateway **115** also may be implemented in other network configurations.

The home-networking gateway **115** may send identifying information **115a** and wireless configuration information **115c** to wireless devices, such as the laptop computer **112f** and the PDA **112g**, and the wireless access point **112h**. The devices and the wireless access point **112f** may be configured based on the received wireless configuration information **115c**.

The home-networking gateway **115** may communicate (e.g., send or receive) the identifying information **115a** and the home-networking gateway configuration information **115b** with the host system **120** using the communication device **119**. The host system **120** may store the received identifying information **115a** and the home-networking gateway configuration information as configuration information **124**, and may associate the configuration information with a particular user account or a unique identifier for the home-networking gateway **115**. When a home-networking gateway **115** is added to a home network (e.g., the previous home-networking gateway is upgraded or replaced), the host

system 120 may provide the configuration information 124 to the home-networking gateway 115.

In certain implementations, the host system 120 may store configuration information 124 for each user account that includes a home-networking gateway, so as to provide access to a multiple devices. For example, as shown in the table below, the DavidKelly123 user account is associated with a home-networking gateway (with the identifier of 12345678); however, no configuration information for the home-networking gateway associated with the David-Kelly123 user account is stored on the host system 120. This may be so because the user of the DavidKelly123 user account has elected not to use the configuration management, automatic configuration, and/or configuration information backup functions of the host system 120. The host system 120 may include the DavidKelly123 user account in configuration information 124 for uses other than for configuring a home-networking gateway, a wireless access point, or a wireless device. For example, the DavidKelly123 user account may be used to enable the home-networking gateway 115 to access the host system 120.

User account	Home-networking gateway	Device information for identified devices
DavidKelly123	12345678	
JaneJones234	23456789	Device information for desktop computer 1 and laptop computer 2
JohnSmith345	67890643	Device information for laptop computer 1, desktop computer 2, game system 3, and PDA 4
JohnSmith345	43567889	Device information for laptop computer 1, desktop computer 2, game system 3, and PDA 4

The JaneJones234 user account is associated with a home-networking gateway (with the identifier of 23456789) that includes configuration information for a desktop computer and a laptop computer accessible through home-networking gateway 23456789.

The JohnSmith345 user account is associated with two home-networking gateways (with the identifiers of 67890643 and 43567889). Both home-networking gateways are configured to communicate with the same devices (specifically, laptop computer 1, desktop computer 2, game system 3, and PDA 4). The home-networking gateways are associated with the same configuration information. This may occur, for example, when a home-networking gateway is replaced with a different home-networking gateway. The home-networking gateway 43567889 may be deleted or otherwise disassociated with the JohnSmith345 account based on, for example, a user request or the passage of a predetermined amount of time after the storage of the configuration information in association with the second home-networking gateway (here, 67890643). In some implementations, configuration information 124 stored on the host system may include connection information, such as telephone numbers that may be used to connect the home-networking gateway 115 to the host system 120 and a user name and password used to enable dial-up for narrowband and broadband connections between the home-networking gateway 115 and the host system 120.

In some implementations, the host system 120 may send connection information to provide access to the home-networking gateway 115. The connection information may include, for example, an Internet Protocol (IP) address or another type of network address and a port to be used to

establish a connection. In some implementations, connection information also may include a unique identifier assigned by the host system 120 for the home-networking gateway 115. The home-networking gateway 115 may receive the connection information. The home-networking gateway 115 may establish a connection with the host system using the received connection information.

The ability of a host system 120 to transfer the configuration information about one home-networking gateway 115 to a different home-networking gateway 115 may be useful because a process to configure a home-networking gateway 115 may be cumbersome and/or time-consuming and because the process of configuring a replacement home-networking gateway typically is redundant of a configuration process previously performed with respect to the home-networking gateway being upgraded or replaced. By the transfer of configuration information from the host system to the replacement home-networking gateway, the repetition of a cumbersome or time-consuming process may be reduced or avoided. The ability to transfer configuration information to a different home-networking gateway may be particularly beneficial when many devices are connected to the network.

In some implementations, the home-networking gateway 115 may perform as or include a wireless access point 112. Additionally or alternatively, the home-networking gateway 115 may communicate with devices using only a wireless communications pathway. In other implementations, the home-networking gateway 115 may communicate with devices using only a wired communications pathway. Additionally or alternatively, the home-networking gateway 115 may include one or more of a communications device 119 and/or one or more of devices 112.

FIG. 2 shows a process 200 to configure a gateway used in a home network. Using process 200, the home-networking gateway is configured automatically in response to confirmation by a user. In some implementations, the home-networking gateway may be transparently configured such that the user is unaware that the configuration is occurring and/or user intervention, action, or response is unnecessary to accomplish the configuration of the home-networking gateway.

A client device 210 may be a device capable of logging on to a host system 220 through a user account. The client device 210 may be, for example, a personal computer with Windows™ OS 112a, a Macintosh™ personal computer 112b, a laptop computer 112f, or a PDA 112g described previously with respect to FIG. 1. The client device 210 communicates with a home-networking gateway 215, such as the home-networking gateway 115 of FIG. 1. The home-networking gateway 215 communicates with a host system 220, such as the host system 120 of FIG. 1.

The process 200 begins when the client device 210 submits a request for access to the host system 220 (step 230c). The home-networking gateway 215 receives the request for access and forwards the request to the host system 220 along with identifying information (step 230g). The identifying information may include a MAC address and/or a network address that may uniquely identify a home-networking gateway 215. The identifying information also may include information that identifies the client device 210 from which the access request was sent. For example, the identifying information may include the MAC address of the client device 210.

The host system 220 receives the request for access and identifying information (step 230h) and requests authentication information (step 234h). The home-networking gate-

way **215** receives the request for authentication information and forwards the request to the client device **210** (step **234g**).

The client device **210** receives the request for authentication information (step **234c**) and submits authentication information (step **238c**). For example, the client device **210** may submit a user or screen name and a password or other authenticating information. The client device **210** may obtain authentication information to submit when a user of the client device **210** enters the authentication information or through the access of authentication information stored on the home network, such as home network **110** of FIG. 1. The home-networking gateway **215** receives the authentication information and forwards the authentication information to the host system **220** (step **238g**).

The host system **220** receives the authentication information (step **238h**) and authenticates the user account of the client device **210** (step **240h**). If the host system **220** determines that the user account associated with the client device **210** is not authenticated, the host system may take any of several actions (not shown), including terminating the session immediately, sending a message to the client device **210**, or sending a message to a master, family or supervisory account associated with the home-networking gateway **215**.

When the host system **220** determines that the user associated with the client device **210** is an authenticated user, the host system **220** determines whether the home-networking gateway **215** is associated with the user account (step **244h**). For example, this may be accomplished when the host system **220** includes a table or a list that associates a particular user account with a home-networking gateway identifier. The table or list may be indexed by user account, home-networking gateway identifier, or both. The host system **220** may access the table or list using the user name that was authenticated in step **240h**. The host system **220** may determine whether the home-networking gateway identifier that had been included in the identifying information received in step **230h** is associated with the user account.

When a home-networking gateway **215** is associated with a user account, the home-networking gateway **215** may be referred to as being a registered home-networking gateway. When the host system determines that the home-networking gateway **215** is associated with the user account (e.g., the home-networking gateway **215** is registered with the host system **220**), the host system **220** permits the user associated with the client device **210** to access functions and services available from the host system **220**.

When the host system **220** determines that the home-networking gateway **215** is not associated with the user account (e.g., the home-networking gateway **215** is not registered with the host system **220**), the host system **220** requests confirmation from the user associated with the client device **210** that it is appropriate and desirable for the home-networking gateway **215** to be associated with the user account (e.g., the home-networking gateway **215** is to be registered) (step **248h**). The home-networking gateway **215** receives the request for registration confirmation and forwards the request to the client device **210** (step **248g**).

The client device **210** receives the request for registration confirmation (step **248c**) and submits registration confirmation that the home-networking gateway **215** is to be associated with the user account (step **250c**). For example, the client device **210** may submit the registration confirmation based on receiving a user response to a request for registration confirmation. The home-networking gateway **215** receives the registration confirmation and forwards the registration confirmation to the host system **220** (step **250g**).

The host system **220** receives the registration confirmation (step **250h**). The host system **220** associates the home-networking gateway **215** with the user account associated with the client device **210** (step **258h**). For example, the host system **220** may store an association between an identifier for the home-networking gateway **215** and a user account in the table or list described previously with respect to step **244h**.

The host system **220** determines whether home-networking gateway configuration information is associated with the user account (step **260h**). For example, home-networking gateway configuration information may be associated with the user account when configuration information of another home-networking gateway **215** is associated with the user account. The host system **220** may determine whether home-networking gateway configuration information is associated with the user account, for example, by determining whether home-networking gateway configuration information is associated with another home-networking gateway **215** that is associated with the user account. The host system **220** may include a home-networking gateway configuration information table or list. The home-networking gateway configuration information may include information such as home-networking gateway configuration information **115b**, as described previously with respect to FIG. 1. The home-networking gateway configuration information table or list may include an association of a particular home-networking gateway identifier with a particular collection of home-networking gateway configuration information. Each particular collection of home-networking gateway configuration information may be associated further with a particular user account through the association of a user account and a home-networking gateway, as described with respect to step **244h**.

When the host system **220** determines that home-networking gateway configuration information is associated with the user account, the process **300** described below with respect to FIG. 3 is performed.

When the host system **220** determines that home-networking gateway configuration information is not associated with the user account (e.g., configuration information is not associated with a different home-networking gateway **215** that is associated with the user account), the host system **220** requests home-networking gateway configuration information from the user associated with client device **220** (step **264h**). The request for configuration information may be associated with device information that the host system **220** has retrieved from the home-networking gateway **215**. For example, the host system **220** may access device configuration information stored on the home-networking gateway **215** and may include the accessed device configuration information in the request for configuration information. The device configuration information may be device information as described with respect to home-networking gateway configuration information **115b** of FIG. 1. In such a case, the accessed configuration information typically includes device information such as an identifier and a type of device for devices configured to operate with the home-networking gateway. The accessed configuration information typically does not include a user-assigned name, parental control information, or other access control information for the devices.

The configuration information requested may include a user-assigned name, such as a familiar name or a nickname, that may be used to identify the device, as described with respect to device information included in home-networking gateway configuration information **115b** of FIG. 1. When the

host system 220 applies different levels of parental controls (e.g., child, young teen, mature teen, and adult) to communications, and parental control information is not included in the accessed configuration information, the requested configuration information may include a default level of parental control for devices and identities that seek access to the host system through home-networking gateway 215 and/or a default level of parental control for each particular device. The host system may apply the default level of parental control associated with the home-networking gateway 215 absent association of a level of parental control with the device being used to access the host system or a user that is associated with the device. When a level of parental control is associated with a user using the device, the host system 220 may apply that level of parental control to communications with the device.

The home-networking gateway 215 receives and forwards the configuration information request to the client device 210 (step 264g). The client device 210 receives the configuration information request (step 264c).

The user of client device 210 enters configuration information using the client device 210 in response to a solicitation from client device 210 (step 268c). For example, the user may have entered a level of parental control to be applied to the identities and devices that seek access to the host system 220 through home-networking gateway 215. Additionally or alternatively, the user may have entered a user-defined name and/or default level of parental control for one or more devices on the home network. In some implementations, the user may indicate time of day and/or day of the week access restrictions that are associated with a particular device, as described with respect to home-networking gateway configuration information 115b in FIG. 1.

The client device 210 submits the configuration information entered by the user (step 270c). The home-networking gateway 215 receives and forwards the configuration information to the host system 220 (step 270g). The host system 220 receives and stores the configuration information (step 270h). The host system 220 may use the configuration information to apply parental controls. The host system 220 also may use the configuration information to provide this or other configuration information (e.g., 124 or 115b of FIG. 1) to a home-networking gateway 215 that is added to the home network or to an upgraded home-networking gateway 215.

The host system 220 associates the stored configuration information with the home-networking gateway 215 (step 274h), for example, as described previously with respect to step 260h. The host system 220 then sends the configuration information to the home-networking gateway 215 (step 278h).

The home-networking gateway 215 receives and stores the configuration information in such a way as to configure the home-networking gateway 215 using some or all of the received configuration information (step 278g). In some implementations, the home-networking gateway 215 may apply the parental controls or access restrictions based on the stored configuration information. In such a case, the home-networking gateway may store the configuration information in a manner that enables application of parental controls using some or all of the received configuration information. This may require storage of some or all of the home-networking gateway configuration information a second time on home-networking gateway 215.

The home-networking gateway 215 sends to the host system 220 an acknowledgment that the configuration information was received and/or stored (step 280g) and the host

system 220 receives the acknowledgment (step 280h). When the host system 220 does not receive an acknowledgment, the host system 220 may take one of several actions, such as re-sending the configuration information to the home-networking gateway or sending an electronic mail message to the user account to notify the user that an acknowledgment was not received.

In some implementations, the registration of a home-networking gateway and/or the configuration of the home-networking gateway or devices may be permitted only by a user associated with a master user account (such as a family account or a supervisory account) or may be permitted only for an account with registration and/or configuration privileges.

Additionally, in some implementations, the host system 220 may generate a password and may send the generated password to the home-networking gateway 215. In such a case, the home-networking gateway 215 receives the password and stores the password in persistent storage. The home-networking gateway 215 may use the password to establish subsequent connections with the host system 210. For example, the host system 220 may generate a password and send the generated password when a broadband connection between the home-networking gateway 215 and the host system 220 is established.

In some implementations, other data management techniques may be used. For example, the home-networking gateway configuration information table or list may associate each collection of configuration information with both a home-networking gateway identifier and a user account.

FIG. 3 shows a process 300 to configure a home-networking gateway 315 used in a home network by using configuration information stored on a host system 320 when network gateway information is associated with a user account. Using process 300, the home-networking gateway is configured automatically in response to confirmation by a user of a client device 310. In some implementations, the home-networking gateway may be transparently configured such that the user is unaware that the configuration is taking place and/or user intervention, action or response are unnecessary to accomplish the configuration of the home-networking gateway.

The process 300 may be performed in relation to process 200 described previously with respect to FIG. 2. In this case, the process 300 begins when the host system 220, which corresponds to the host system 320, determines that home-networking gateway configuration information is associated with the user account in step 260h of FIG. 2.

When the host system 320 determines that home-networking gateway configuration information is associated with the user account, the host system 320 sends to the home-networking gateway 315 a request for the user associated with the client device 310 to confirm that the associated configuration information may be transferred to home-networking gateway 315 (step 364h).

The home-networking gateway 315 receives the confirmation request and forwards the confirmation request to the client device 310 (step 364g). The client device receives the confirmation request (step 364h). The user using the client device confirms the desire for transfer associated configuration information and hence for configuration of the home-networking gateway 315 in response to a solicitation from client device 310 (step 368c). For example, the user may confirm the transfer of configuration information when the user desires to configure a new or upgraded home-networking gateway. The user also may confirm the transfer of configuration information when the configuration informa-

tion on the home-networking gateway has been lost, damaged, or is otherwise inaccessible or unusable by the home-networking gateway. When the user does not confirm the transfer of the configuration information, the process ends. When the user confirms the transfer of the configuration information, the client device 310 submits the transfer confirmation (step 370c).

The home-networking gateway 315 receives the transfer confirmation and forwards the transfer confirmation to the host system 320 (step 370g). The host system 320 receives the transfer confirmation (step 370h), and retrieves the configuration information, which may be associated with another home-networking gateway that is associated with the user account (step 372h). For example, the host system may look-up the user account and home-networking gateway in a table or list that stores configuration information and is indexed by user account, as described previously with respect to step 260h of FIG. 2. The configuration information associated with the other home-networking gateway that is associated with the user account then may be retrieved. The retrieved configuration information may include, for example, some or all of the device information for the devices associated with the home-network, as described with respect to home-networking gateway configuration information 115b of FIG. 1. The retrieved configuration information also may include parental control levels, other access restrictions, and other information described with respect to step 268c of FIG. 2.

The host system 320 associates the retrieved configuration information with the home-networking gateway 315 (step 374h). For example, the host system 320 may store a list of identifiers for home-networking gateways and a list of unique identifiers associated with particular sets of configuration information. To associate the home-networking gateway 315 with the configuration information, the host system 320 may add a record to the list that includes an identifier for the home-networking gateway and an identifier for the configuration information set. Other data management techniques also may be used, such as described previously with respect to steps 258h, 260h, and 274h of FIG. 2.

The host system 320 sends the retrieved configuration information to the home-networking gateway 315 (step 378h). The home-networking gateway 315 receives and stores the configuration information (step 378g), such as described previously with respect to step 278g in FIG. 2.

The home-networking gateway 315 sends to the host system 320 an acknowledgment that the configuration information was received and stored (step 380g). The host system 320 receives the acknowledgment (step 380h). When the host system 320 does not receive an acknowledgment, the host system 320 may take one of several actions, such as re-sending the configuration information to the home-networking gateway or sending an electronic mail message to the user account to notify the user that an acknowledgment was not received.

FIG. 4 illustrates a process 400 for configuring a home-networking gateway. The process 400 may be performed by a host system, such as host system 120 of FIG. 1, host system 220 of FIG. 2, or host system 320 of FIG. 3. The process 400 begins when the host system receives a request for access from a device associated with a user account of a user (step 410). The user account may be a supervisory account, a family account, a master account or another type of user account that is permitted to register a home-networking gateway and/or modify the configuration of the home-networking gateway.

The host system authenticates the user account (step 420). For example, the host system may authenticate the account by requesting authorization information, receiving authorization information, and authenticating the account based on the received authentication information, such as described previously with respect to steps 234h–240h of FIG. 2.

The host system receives home-networking gateway identifying information (step 425). This may be performed, for example, as described above with respect to steps 230g–230h of FIG. 2. In some implementations, the home-networking gateway identifying information may be received in response to a request for home-networking gateway identifying information sent by the host system to the home-networking gateway.

The host system determines whether the home-networking gateway is associated with a user account (step 430). This may be performed, for example, as described previously with respect to step 244h of FIG. 2. When the host system determines that the home-networking gateway has been associated with a user account, the host system permits the home-networking gateway to access host services (step 435).

When the host system determines that the home-networking gateway has not been associated with a user account, the host system determines whether to associate the user account with the home-networking gateway (step 440). This may be accomplished, for example, by requesting confirmation that the home-networking gateway is intended to be associated with the user account from a user associated with the device communicating through the home-networking gateway, such as described previously with respect to steps 248h–254h of FIG. When the user does not so confirm, the host system permits the home-networking gateway to access host services (step 435).

When the user confirms that the home-networking gateway is intended to be associated with the user account, the host system associates the home-networking gateway with the user account (step 445). This may be accomplished as described previously with respect to step 258h of FIG. 2.

The host system may optionally generate a password and send the generated password to the home-networking gateway (step 450). The host system also may optionally establish a connection with the home-networking gateway based on the password and/or additional connection information (step 460). For example, the host system may generate a password, send the password, and establish a new connection when a broadband connection between a home-networking gateway and a host system is established.

The host system determines whether configuration information is associated with a different home-networking gateway that is associated with the user account authenticated in step 420 (step 470). The determination of whether configuration information is associated with the home-networking gateway may be accomplished, for example, as described with respect to step 260h of FIG. 2.

When the host system determines that configuration information is not associated with the other home-networking gateway that is associated with the user account, the host system requests configuration information (step 480). For example, the host system may access device configuration information from the home-networking gateway and/or may request additional configuration information from the user associated with the account, such as described with respect to step 264h of FIG. 2. The host system receives and stores configuration information (step 485). This may be accomplished by performing step 270h of FIG. 2.

15

The host system associates the stored configuration information with the home-networking gateway and the account, such as described with respect to step 274h of FIG. 2 and step 374h of FIG. 3 (step 490). The host system also may send the configuration information to the home-networking gateway (step 492). This may be accomplished by performing step 278h of FIG. 2 or step 378h of FIG. 3. The host system then permits the home-networking gateway to access host services (step 435).

When the host system determines that configuration information is associated with another home-networking gateway associated with the user account, the host system accesses that configuration information (step 495). This may be accomplished, for example, as described with respect to step 372h of FIG. 3. The host system then associates the accessed configuration information with the home-networking gateway and the user account (step 490) and proceeds as previously described.

FIG. 5 illustrates a process 500 that may be used to configure one or more wireless access points. The process 500 may be performed by a home-networking gateway that may optionally include a wireless access point or otherwise be configured to communicate over a wireless communications pathway. Examples of a home-networking gateway that may perform process 500 include home-networking gateway 115 of FIG. 1, home-networking gateway 215 of FIG. 2, or home-networking gateway 315 of FIG. 3, each of which have been described previously.

The process 500 begins when a home-networking gateway receives and stores wireless configuration information (step 510). Wireless configuration information may include a security key and a network name, as described previously with respect to wireless configuration information 115c of FIG. 1. Reception and storage of configuration information may occur during the manufacturing or distribution process of the home-networking gateway. For example, the home-networking gateway may be pre-configured with wireless configuration information at a factory or distribution point. Alternatively or additionally, the home-networking gateway may receive the wireless configuration information by accessing storage media (including magnetic, optical or solid state storage media) or any type of storage device (including a drive, a microdrive, a compact disc (CD), a recordable CD, a rewriteable CD, a flash memory, or a solid-state floppy disk card) that stores the wireless configuration information. The home-networking gateway also may receive the wireless configuration information from a user interface of the home-networking gateway through which a user may enter wireless configuration information to be stored by the home-networking gateway. The home-networking gateway also may receive the wireless configuration information when the user configures another wireless device.

The home-networking gateway is connected to a wireless access point, such as described with respect to item 112h of FIG. 1, using a wired communications pathway (step 520) and communications are established between the home-networking gateway and the wireless access point using the wired pathway (step 530). The wired communications pathway may be a wired communications pathway of a wired network. The wired communications pathway also may be a wired communications pathway provided through a wire specifically designed to connect a wireless access point to a home-networking gateway (and not designed for general network communications).

The home-networking gateway and the wireless access point establish communications using a protocol known to

16

both devices. For example, UPnP (“Universal Plug and Play”) may be used. When a wire is plugged into the wireless access point, the wireless access point may announce its presence by sending a message over the wire. The home-networking gateway may receive the message and detect the wireless access point based on the received message. The home-networking gateway may send to the wireless access point a reply message announcing the presence of the home-networking gateway.

The home-networking gateway accesses wireless configuration information previously established for the wireless network, generally with respect to another wireless device (step 540). The wireless configuration information may be stored on the home-networking gateway or may be otherwise accessible to the home-networking gateway. For example, wireless configuration information may be stored on a persistent storage device that is accessible to the home-networking gateway through a network connection or other connection between the home-networking gateway and the persistent storage device.

The home-networking gateway may access configuration information transparently to the user, such that the user is unaware that configuration information is accessed. Alternatively, the home-networking gateway also may access configuration information automatically in response to user confirmation that the connected wireless access point is to be configured. The home-networking gateway may access configuration information stored on a host system, such as in a manner described with respect to FIG. 2 and/or FIG. 3.

The home-networking gateway sends the wireless configuration information using the wired communications pathway to the wireless access point (step 550), and the wireless device uses this information for configuration and sends a confirmation (not shown). Later, the home-networking gateway receives an acknowledgment sent by the wireless access point that the wireless access point has been configured using the wireless configuration information (step 560). In some implementations, the home-networking gateway may perform the configuration of the wireless access point in lieu of receiving an acknowledgment that the wireless access point has been configured. For example, the home-networking gateway may do so by remotely initiating a configuration process on the wireless access point and sending configuration information (e.g., by using a remote procedure call).

When another wireless access point subsequently is connected and needs configuration (step 570), the process 500 continues with the connection of a different wireless access point to the home-networking gateway, as described previously with respect to step 520.

When no other wireless access point is to be configured (step 570), the process 500 ends (step 580).

In some implementations, the wireless access point may pull information from the home-networking gateway in addition to or in lieu of the home-networking gateway sending the wireless configuration information in step 550.

The process 500 enables several advantageous features, some of which are described below. The process 500 allows a user to enter the wireless configuration information once and use the entered wireless configuration information to configure more than one wireless access point automatically in response to a confirmation of a user. In some cases, the entered wireless configuration information may be used to configure a wireless device transparently such that the user is unaware that the wireless device has been configured. The process 500 may be particularly beneficial when multiple wireless access points are to be configured for use in a single

17

network. Additionally or alternatively, the process 500 may allow a more convenient user interface for the configuration of even a single wireless access point over conventional interfaces provided through a wireless access point.

FIG. 6 shows a process for communicating between a wireless access point 610 and a home-networking gateway 615 to configure the wireless access point 610. The wireless access point 610 may be a wireless access point connected to a home network, such as wireless access point 112h of FIG. 1. The wireless access point 610 may be physically connected through a wired pathway to home-networking gateway 615, such as home-networking gateway 115 of FIG. 1, home-networking gateway 215 of FIG. 2, or home-networking gateway 315 of FIG. 3.

The process 600 begins when the wireless access point 610 establishes communications with the home-networking gateway 615 over a wired communications pathway (step 630w). This may be accomplished, for example, as described previously with respect to step 530 of FIG. 5.

The home-networking gateway 615 accesses wireless configuration information (step 630g). This may be accomplished, for example, as described previously with respect to step 540 of FIG. 5.

The home-networking gateway 615 sends the wireless configuration information accessed in step 630g to the wireless access point 610 (step 640g). This may be accomplished, for example, as described above with respect to step 550 of FIG. 5.

The wireless access point 610 receives the wireless configuration information (step 640w) and modifies its configuration based on the received wireless configuration information (step 645w). For example, the wireless access point 610 may update a configuration table (or otherwise modify the configuration parameters) with the wireless configuration information received. Alternatively or additionally, the home-networking gateway 615 may act as a configuration proxy and directly modify the configuration table or parameters on the wireless access point 610.

The wireless access point 610 sends to the home-networking gateway 615 an acknowledgment that the wireless configuration settings have been modified (step 650w). The home-networking gateway 615 receives the acknowledgment (step 650g).

In some implementations, the home-networking gateway 615 may determine whether the wireless access point 610 has been previously configured. For example, the home-networking gateway 615 may access wireless configuration information and send the wireless configuration information to the wireless access point only when the wireless access point has not been previously configured or has been previously configured with different configuration information.

Using the process 600, a wireless access point may be configured transparently to the user such that user action, response or other types of intervention by the user to enable configuration are unnecessary (other than connecting the wireless access point and host-networking gateway using a wire or other physical connection). In some implementations, the home-networking gateway automatically may configure the wireless access point in response to user confirmation that the wireless access point is to be configured.

FIG. 7 depicts a process 700 for communicating between a wireless device 710 and a home-networking gateway 715 to configure the wireless device 710. In general, the wireless device 710 may be configured by the home-networking gateway 715 when the home-networking gateway 715 receives a security code that is available only to an operator

18

of the home-networking gateway that is within the premises in which the home-networking gateway is located.

A security code may be available because the security code is published and perceivable only to an operator of the home-networking gateway 715 that is within the premises in which the home-networking gateway 715 is located. The operator may enter the security code in response to a prompt or other request from the home-networking gateway 715. For example, a security code may be imprinted or otherwise attached to the case of the home-networking gateway 715 and may be entered by a home-networking gateway operator into the wireless device through a user interface. A label may be placed on the home-networking gateway 715 that identifies the security code and enables the operator to enter the security code in response to a prompt by the home-networking gateway 715.

Additionally or alternatively, the operator may be able to display the security code using the home-networking gateway 715 and enter the displayed code into the wireless device in response to a prompt or other type of request by the home-networking gateway 715. The home-networking gateway 715 may access a security code that has been programmed into (or otherwise stored on) the home-networking gateway 715 before delivery to the owner of the home-networking gateway. For example, the home-networking gateway 715 may be programmed or otherwise configured with the security code at a factory or at a distribution point. The home-networking gateway 715 also may access a security code that is stored on a removable magnetic, optical or solid state storage device associated with the home-networking gateway.

Conversely, a security code also may be available to the wireless device through the use of removable storage that contains the security code and the security code may not be known by the home-networking gateway operator. For example, the wireless device 710 may determine the security code to be submitted by accessing removable storage on which the security code has been stored. For instance, the security code may be programmed into a hardware key which may be made available to the home-networking gateway operator and which may be physically accessed by the wireless device to enable access. In some cases, the removable media may be a wireless communications card on which the home-networking gateway stores the wireless configuration information.

The wireless device 710 may be a wireless device that is capable of communicating with a home network, for example, by communicating with a wireless access point, such as wireless access point 112h of FIG. 1, or with a home-networking gateway that includes wireless communication capabilities. The wireless device 610 also may have a capability to communicate over a wired connection to a home-networking gateway. For example, the wireless device 610 may be a laptop computer, such as laptop computer 112f, or a PDA, such as PDA 112g, that may be equipped with both wireless and wired communication capabilities. The wireless device 710 is physically connected through a wired communications pathway to the home-networking gateway 715, which may correspond, for example, to the home-networking gateway 115 of FIG. 1, the home-networking gateway 215 of FIG. 2, the home-networking gateway 315 of FIG. 3, or the home-networking gateway 615 of FIG. 6.

The process 700 begins when the wireless device 710 establishes communications over the wired communications pathway with the home-networking gateway 715 (step 730w). The wired communications pathway may be a wired

communications pathway that uses a network communications pathway. The wired communications pathway also may be a wired communications pathway that may be provided through a wire specifically designed to connect a wireless access point to a home-networking gateway and not designed for general network communications.

The home-networking gateway 715 requests provision of a wireless configuration security code from the wireless device 710 (step 735g).

The wireless device 710 receives the request (step 735w) and submits the wireless configuration security code (step 740w). The wireless configuration security code may be submitted through the input of a security code by the home-networking gateway operator in response to a prompt or other type of request. The wireless configuration security code may be submitted when the wireless device 710 accesses a removable storage device that stores the security code.

The home-networking gateway receives the wireless configuration security code (step 740g) and validates the received wireless configuration security code (step 750g). The home-networking gateway may validate the received wireless configuration security code by comparing the received security code with a security code accessible to (or otherwise known to) the home-networking gateway 715 (e.g., a trusted security code). The received security code is valid when both security codes match. When the home-networking gateway 715 is not able to validate the submitted security code, the process 700 ends.

When the home-networking gateway 715 is able to validate the received security code, the home-networking gateway 715 accesses wireless configuration information (step 755g). For example, the home-networking gateway 715 may store wireless configuration information, as described previously with respect to home-networking gateway 115 of FIG. 1. The accessed wireless configuration information may include, for example, a security key (e.g., a WEP key), a network name (such as a SSID), a list of devices permitted to access the network, and other information needed to configure the device to work on the wireless home network.

The home-networking gateway 715 sends the accessed wireless configuration information to the wireless device (step 760g). The wireless device 710 receives the wireless configuration information (step 760w) and modifies the configuration information previously stored by the wireless device (step 765w), to the extent that it exists. For example, the wireless device 710 may update a configuration table (or otherwise modify the configuration parameters) with the wireless configuration information received. Alternatively or additionally, the home-networking gateway 715 may act as a configuration proxy and modify the configuration table or parameters on the wireless device 710. In some implementations, the wireless device 710 may include more than one set of configuration settings. The set of configuration settings used by the wireless device 710 may be based on the network identifier of the wireless network with which the wireless device 710 is communicating. For example, a laptop computer may store a set of configuration settings to communicate with a wireless network at an office and may also store a different set of configuration settings to communicate with a wireless network at a residence or home. The laptop computer may communicate with either the office network or the home network using the appropriate settings.

The wireless device 710 sends to the home-networking gateway 715 an acknowledgment that the wireless configuration settings have been modified (step 770w). The home-

networking gateway 615 receives the acknowledgment (step 770g). When the home-networking gateway 715 does not receive an acknowledgment, the home-networking gateway 715 may take one of several actions, such as re-sending the wireless configuration information to the wireless device 710 or sending an electronic mail message to a user account to notify the user that an acknowledgment was not received. In some implementations, the wireless device 710 may pull information from the home-networking gateway 715 in addition to or in lieu of the home-networking gateway sending the wireless configuration information in step 760g.

Alternatively, a memory card, a memory key, or another type of removable storage device may be used to simulate or facilitate communications between the wireless device 710 and the home-networking gateway 715. For example, an operator of the home-networking gateway 715 may insert the removable storage device into the home-networking gateway 715. The home-networking gateway 715 may access the security code and store the security code on the inserted removable storage device. After storage is complete, the operator may remove the removable storage device from the home-networking gateway and insert the removable storage device into the wireless device. The wireless device may access the security code and provide the accessed security code to the home-networking gateway 715.

In some implementations, the operator may insert a removable storage device configuration card into the home-networking gateway (or other device, such as a wireless access point) and the home-networking gateway may access the stored wireless configuration information and copy the wireless configuration to the removable storage device without requiring the wireless device to provide a security code. The operator may remove the removable storage device from the home-networking gateway for use in transporting the configuration information to a wireless device. In some implementations, the removable storage media may be a communications card for use by the wireless device 710. The home-networking gateway operator may insert the communications card in the wireless device 710 to enable wireless communications between the wireless device 710 and the home-networking gateway 715.

The process 700 enables several advantageous features, some of which are described below. For example, only users with physical access to the home-networking gateway in the residence are able to access the configuration information for the home network (e.g., the wireless configuration information is not broadcast over a wireless network).

In some implementations, a wireless access point or other device may perform the functions described as being performed by the home-networking gateway 715.

Although the techniques and concepts have been described in which a host system stores configuration information and performs a proxy configuration service for a wireless device, a wireless access point, or a home-networking gateway, a trusted system that may not necessarily be in a host-client relationship with the home-networking gateway may be used in place of the described host system. Another type of trusted computing device also may be used to perform the described techniques and concepts. For example, a general-purpose computer accessible to the network, such as in a peer-to-peer relationship, or another trusted computer system may be used to perform the functions described as being performed by the host system.

Although the techniques and concepts have been described in which a user account is authenticated and associated with information for a home-networking gateway

21

or other communication device, the user account does not necessarily need to be a subscriber account. The techniques and concepts described with respect to a user account are applicable to a user identity or an operator operating a device or a home-networking gateway.

The techniques and concepts are applicable to home network devices other than a home-networking gateway. For example, a router, a digital hub, a general-purpose computer, or a single-purpose configuration management device may perform the functions described as being performed by the home-networking gateway.

Implementations may include a method or process, an apparatus or system, or computer software on a computer medium. It will be understood that various modifications may be made that still fall within the following claims. For example, advantageous results still could be achieved if steps of the disclosed techniques were performed in a different order and/or if components in the disclosed systems were combined in a different manner and/or replaced or supplemented by other components.

What is claimed is:

1. A method for configuring connectivity settings of a wireless communications device to enable communications by the wireless communications device with a home-networking gateway over a wireless connection between the wireless communications device and the home-networking gateway, the method comprising:

establishing, over a wired connection, a communications session between the wireless communications device and the home-networking gateway;

receiving, over the wired connection, a security code from the wireless communications device;

accessing a trusted security code;

determining whether the received security code is authentic based on the accessed trusted security code;

based on a determination that the received security code is authentic, using the home-networking gateway to access wireless connectivity configuration information; sending the accessed wireless connectivity configuration information from the home-networking gateway to the wireless communications device over the wired connection between the wireless communications device and the home-networking gateway.

2. The method of claim 1 further comprising repeating the establishing of a communications session and the sending of the accessed wireless connectivity configuration information with more than one wireless communications device.

3. The method of claim 1 wherein the wireless connectivity configuration information includes a security key and a network name.

4. The method of claim 1 further comprising storing wireless connectivity configuration information on the home-networking gateway.

5. The method of claim 1 wherein accessing the trusted security code comprises accessing a trusted security code that is physically associated with the home-networking gateway.

6. The method of claim 5 wherein the trusted security code is preprogrammed into the home-networking gateway.

7. The method of claim 6 wherein the trusted security code is stored in firmware of the home-networking gateway.

8. The method of claim 1 wherein accessing the trusted security code comprises accessing a trusted security code stored on a removable storage device accessible to the home-networking gateway.

22

9. The method of claim 1 wherein accessing the trusted security code comprises accessing a trusted security code stored on a hardware key accessible to the home-networking gateway.

10. A method for configuring connectivity settings of a wireless communications device to enable communications by the wireless communications device with a home-networking gateway over a wireless connection between the wireless communications device and the home-networking gateway, the method comprising:

accessing wireless connectivity configuration information using the home-networking gateway;

storing the accessed wireless connectivity configuration information on a removable storage device at the home-networking gateway;

allowing for the removable storage device to be removed from the home-networking gateway;

after removal of the removable storage device from the home-networking gateway, receiving the removable storage device at the wireless communications device; accessing the wireless connectivity configuration information stored on the removable storage device using the wireless communications device; and

using the wireless connectivity configuration information accessed from the removable storage device to configure the connectivity settings of the wireless communications device to enable communications by the wireless communications device with the home-networking gateway over a wireless connection between the wireless communications device and the home-networking gateway.

11. The method of claim 10 wherein:

the removable storage device is associated with a wireless communications card; and

receiving the removable storage device at the wireless communications device comprises enabling the wireless communications card to be inserted into the wireless communications device.

12. The method of claim 10 wherein the removable storage device comprises one of removable magnetic media, removable optical media, or removable solid state storage media.

13. A system for configuring connectivity settings of a wireless communications device to enable communications by the wireless communications device with a home-networking gateway over a wireless connection between the wireless communications device and the home-networking gateway, the system comprising:

means for establishing, over a wired connection, a communications session between the wireless communications device and the home-networking gateway;

means for receiving, over the wired connection, a security code from the wireless communications device;

means for accessing a trusted security code;

means for determining whether the received security code is authentic based on the accessed trusted security code;

means for using the home-networking gateway to access wireless connectivity configuration information and based on a determination that the received security code is authentic; and

means for sending the accessed wireless connectivity configuration information from the home-networking gateway to the wireless communications device over the wired connection between the wireless communications device and the home-networking gateway.

14. The system of claim 13 further comprising a means for repeating the establishing of a communications session and

23

the sending of the accessed wireless connectivity configuration information with more than one wireless communications device.

15. The system of claim 13 wherein the wireless connectivity configuration information includes a security key and a network name.

16. The system of claim 13 further comprising means for storing wireless connectivity configuration information on the home-networking gateway.

17. The system of claim 13 wherein the means for accessing the trusted security code comprises means for accessing a trusted security code that is physically associated with the home-networking gateway.

18. The system of claim 17 wherein the trusted security code is preprogrammed into the home-networking gateway.

19. The system of claim 18 wherein the trusted security code is stored in firmware of the home-networking gateway.

20. The system of claim 13 wherein the means for accessing the trusted security code comprises means for accessing a trusted security code stored on a removable storage device accessible to the home-networking gateway.

21. The system of claim 13 wherein the means for accessing the trusted security code comprises means for accessing a trusted security code stored on a hardware key accessible to the home-networking gateway.

22. A system for configuring connectivity settings of a wireless communications device to enable communications by the wireless communications device with a home-networking gateway over a wireless connection between the wireless communications device and the home-networking gateway, the system comprising:

means for accessing wireless connectivity configuration information using the home-networking gateway;

means for storing the accessed wireless connectivity configuration information on a removable storage device at the home-networking gateway;

means for allowing the removable storage device to be removed from the home-networking gateway;

means for receiving the removable storage device at the wireless communications device after removal of the removable storage device from the home-networking gateway;

means for accessing the wireless connectivity configuration information stored on the removable storage device using the wireless communications device; and
means for using the wireless connectivity configuration information accessed from the removable storage device to configure the connectivity settings of the wireless communications device to enable communications by the wireless communications device with the home-networking gateway over a wireless connection between the wireless communications device and the home-networking gateway.

23. The system of claim 22 wherein:
the removable storage device is associated with a wireless communications card; and

the means for receiving the removable storage device at the wireless communications device comprises a means for enabling the wireless communications card to be inserted into the wireless communications device.

24. The system of claim 22 wherein the removable storage device comprises one of removable magnetic media, removable optical media, or removable solid state storage media.

25. A computer-readable medium having embodied thereon a computer program configured to configure connectivity settings of a wireless communications device to enable communications by the wireless communications

24

device with a home-networking gateway over a wireless connection between the wireless communications device and the home-networking gateway, the medium comprising one or more code segments configured to:

establish, over a wired connection, a communications session between the wireless communications device and the home-networking gateway;

receive, over the wired connection, a security code, from the wireless communications device;

access a trusted security code;

determine whether the received security code is authentic based on the accessed trusted security code;

use the home-networking gateway to access wireless connectivity configuration information based on a determination that the received security code is authentic;

send the accessed wireless connectivity configuration information from the home-networking gateway to the wireless communications device over the wired connection between the wireless communications device and the home-networking gateway.

26. The medium or signal of claim 25 further comprising one or more code segments configured to repeat the establishing of a communications session and the sending of the accessed wireless connectivity configuration information with more than one wireless communications device.

27. The medium of claim 25 wherein the wireless connectivity configuration information includes a security key and a network name.

28. The medium of claim 25 further comprising one or more code segments configured to store wireless connectivity configuration information on the home-networking gateway.

29. The medium of claim 25 wherein the one or more code segments configured to access the trusted security code comprise one or more code segments configured to access a trusted security code that is physically associated with the home-networking gateway.

30. The medium of claim 29 wherein the trusted security code is preprogrammed into the home-networking gateway.

31. The medium of claim 30 wherein the trusted security code is stored in firmware of the home-networking gateway.

32. The medium of claim 25 wherein the one or more code segments configured to access the trusted security code comprise one or more code segments configured to access a trusted security code stored on a removable storage device accessible to the home-networking gateway.

33. The medium of claim 25 wherein the one or more code segments configured to access the trusted security code comprise one or more code segments configured to access a trusted security code stored on a hardware key accessible to the home-networking gateway.

34. A computer-readable medium having embodied thereon a computer program configured to configure connectivity settings of a wireless communications device to enable communications by the wireless communications device with a home-networking gateway over a wireless connection between the wireless communications device and the home-networking gateway, the medium comprising one or more code segments configured to:

access wireless connectivity configuration information using the home-networking gateway;

store the accessed wireless connectivity configuration information on a removable storage device at the home-networking gateway;

allow for removal of the removable storage device from the home-networking gateway;

25

receive the removable storage device at the wireless communications device after removal of the removable storage device from the home-networking gateway; access the wireless connectivity configuration information stored on the removable storage device using the wireless communications device; and use the wireless connectivity configuration information accessed from the removable storage device to configure the connectivity settings of the wireless communications device to enable communications by the wireless communications device with the home-networking gateway over a wireless connection between the wireless communications device and the home-networking gateway.

35. The medium of claim 34 wherein: the removable storage device is associated with a wireless communications card; and the one or more code segments configured to receive the removable storage device at the wireless communications device comprise one or more code segments configured to enable the wireless communications card to be inserted into the wireless communications device.

26

36. The medium of claim 34 wherein the removable storage device comprises one of removable magnetic media, removable optical media, or removable solid state storage media.

37. The method of claim 1 further comprising using the wireless connectivity configuration information sent from the home-networking gateway to the wireless communications device over the wired connection between the wireless communications device and the home-networking gateway to configure the connectivity settings of the wireless communications device to enable communications by the wireless communications device with the home-networking gateway over a wireless connection between the wireless communications device and the home-networking gateway.

38. The method of claim 1 wherein determining whether the received security code is authentic based on the accessed trusted security code comprises comparing the received security code with the trusted security code.

* * * * *