



US 20140344106A1

(19) **United States**

(12) **Patent Application Publication**
Lee et al.

(10) **Pub. No.: US 2014/0344106 A1**

(43) **Pub. Date: Nov. 20, 2014**

(54) **ONE-PAGE CHECKOUT**

(52) **U.S. CL.**

(71) Applicants: **Seung Hyo Lee**, San Jose, CA (US);
Desmond Kwokhon Chan, San Jose,
CA (US)

CPC **G06Q 30/0633** (2013.01); **G06Q 30/0641**
(2013.01)
USPC **705/26.8**

(72) Inventors: **Seung Hyo Lee**, San Jose, CA (US);
Desmond Kwokhon Chan, San Jose,
CA (US)

(57) **ABSTRACT**

(21) Appl. No.: **14/192,818**

(22) Filed: **Feb. 27, 2014**

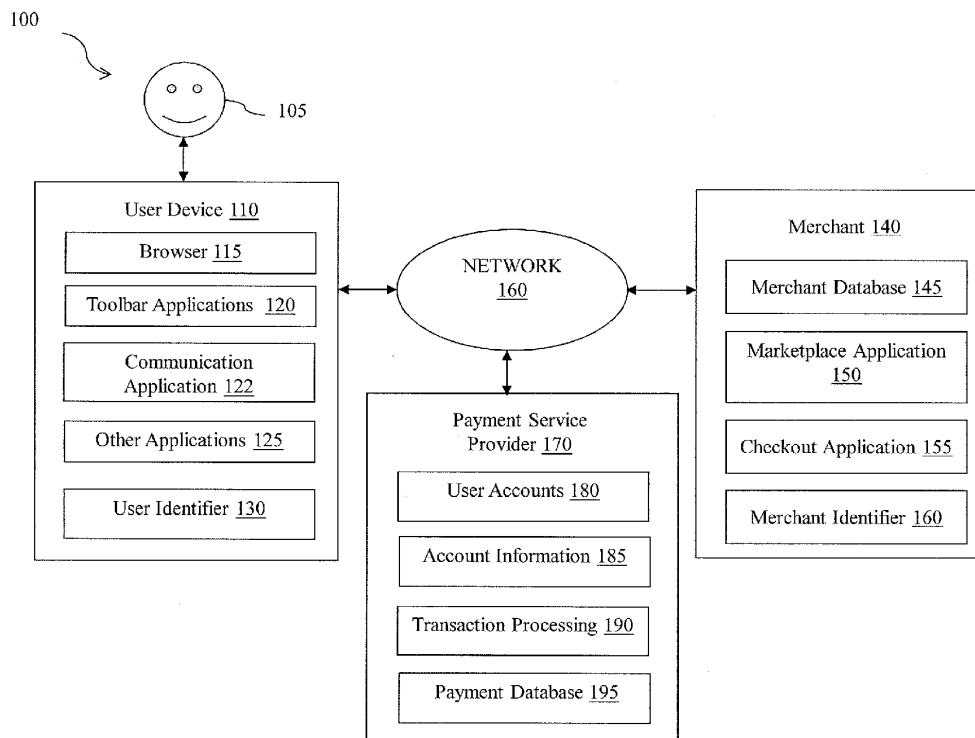
Related U.S. Application Data

(60) Provisional application No. 61/823,565, filed on May
15, 2013.

Publication Classification

(51) **Int. Cl.**
G06Q 30/06 (2006.01)

Systems and methods for facilitating a purchase are described. A user logs in to a payment service provider site. The user provides authorization to use a one-page checkout service. The user's information is captured during the session, and a cookie is placed on the user's device. When the user goes on a merchant website and checks out using the payment service provider, the payment service provider detects the cookie on the user device. The payment service provider uses the cookie, and in one embodiment, centrally stored information, to populate the one-page checkout page with the last used payment. In various embodiments, the one-page checkout page also displays a shipping address.



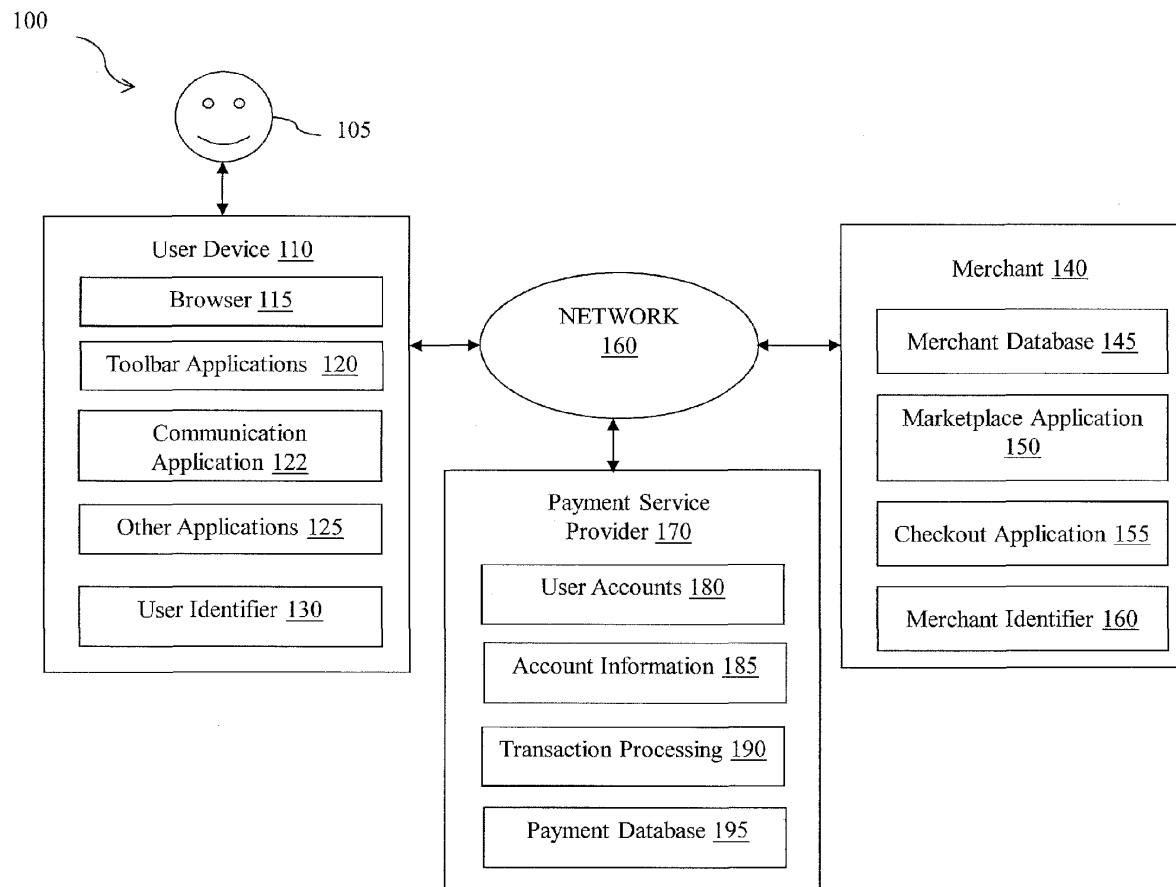


FIG. 1

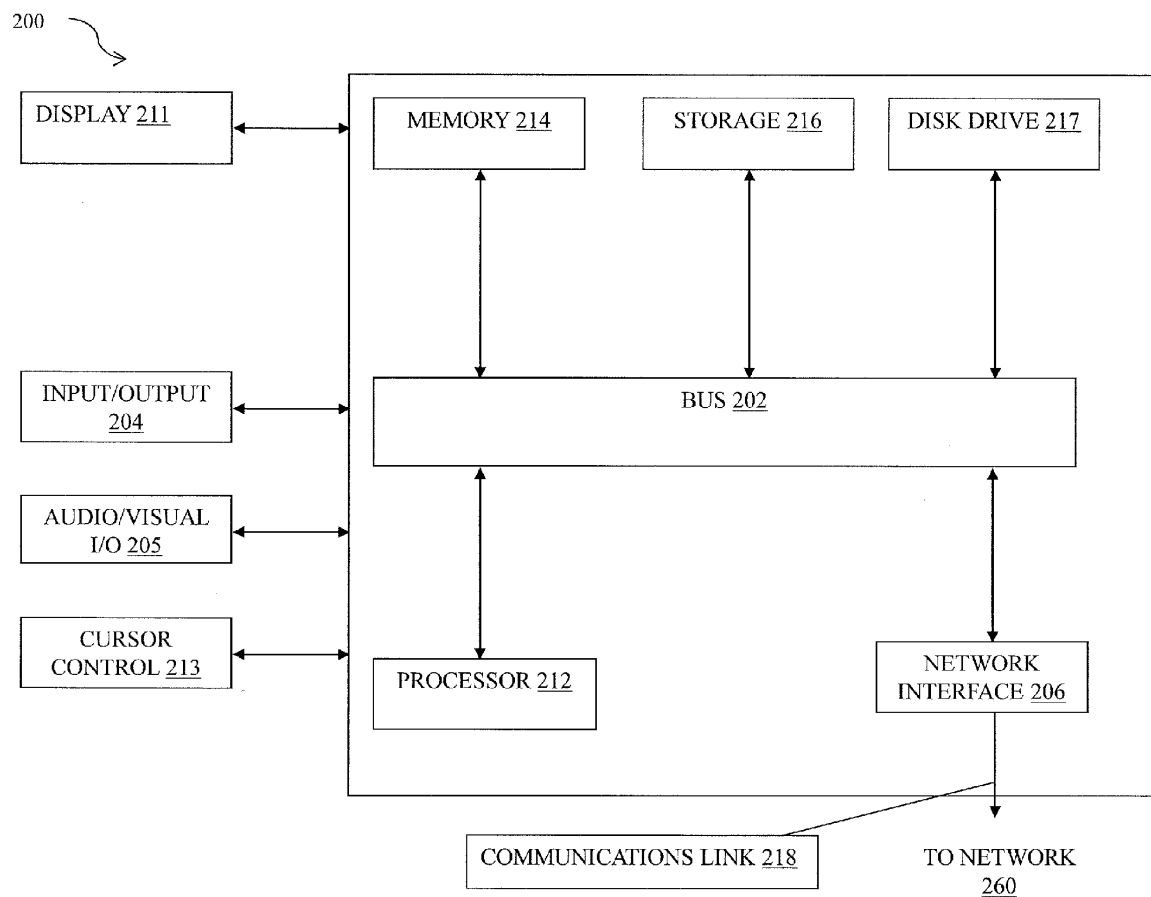


FIG. 2

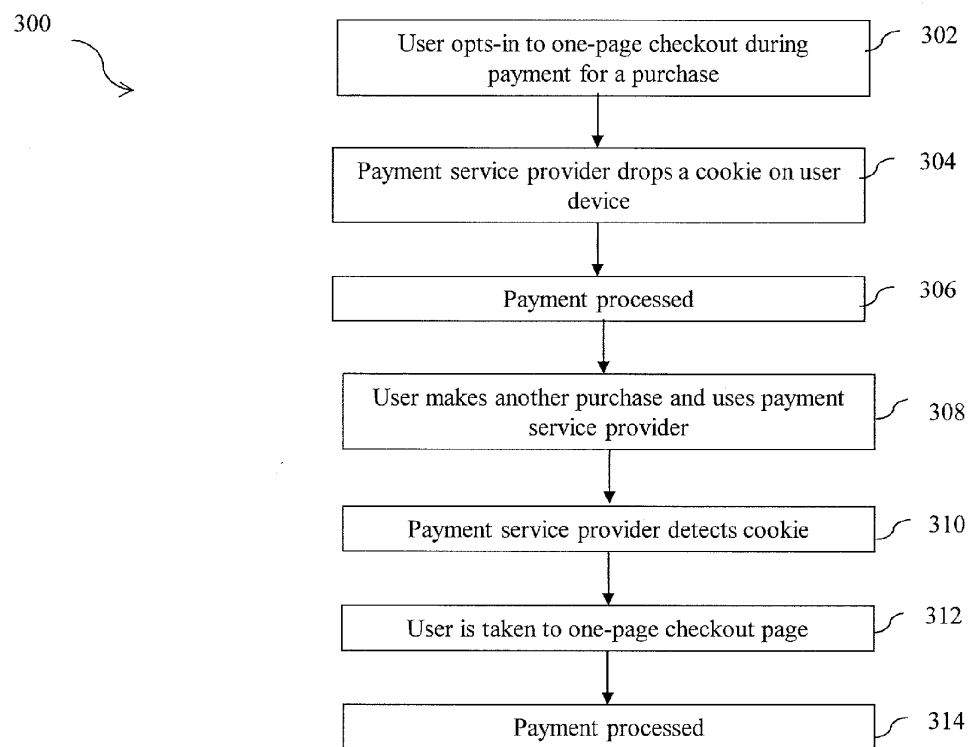


FIG. 3

Your order summary ~ 402

Descriptions	Amount
SPARKY'S MAGIC PIANO-SPARKY and I	\$45.00
Item price: \$45.00	
Quantity: 1	
Item total	\$45.00
Shipping and handling	\$4.00
Total	\$49.00 USD

Choose a way to pay

Pay with my PayPal account

Log in to your account to complete the purchase

Email

PayPal password

406

☐ This is a private computer
 [What's this?](#)

Log In

[Forgot email or password?](#)

Don't have a PayPal account?

(Optional) Join PayPal for faster future checkout.

[Site Feedback](#) [+]

PayPal: The safer, easier way to pay. For more information, read our [User Agreement](#) and [Privacy Policy](#)

FIG. 4

Your order summary ~ 502

Descriptions	Amount
SPARKY'S MAGIC PIANO-SPARKY and T	\$45.00
Item price: \$45.00	
Quantity: 1	
Item total	\$45.00
Shipping and handling	\$4.00
Total	\$49.00 USD

Site Feedback [-]

PayPal: The safer, easier way to pay. For more information, read our [User Agreement](#) and [Privacy Policy](#)

Review your Information

PayPal

504

▽ Welcome back, Tim! [Not Tim?](#)

Complete your purchase using the details from your last payment, or [make changes](#).

Shipping address [Change](#) ~ 508

Tim *** **

1126 ***** **

San Jose, ** *****

United States

Payment method [Change](#) ~ 510

Bank of America Bank Account x-xx44

PayPal will use Visa XXXX-XXXX-XXXX-XX37 to fund this transaction if your bank does not have enough funds.

Email address

506 ~

PayPal password

512 ~

514 ~

[Forgot your password?](#)

[Don't have a PayPal account?](#)

(Optional) Join PayPal for faster future checkout.

FIG. 5

ONE-PAGE CHECKOUT

CROSS-REFERENCE TO RELATED APPLICATION

[0001] Pursuant to 35 U.S.C. §119(e), this application claims priority to the filing date of U.S. Provisional Patent Application No. 61/823,565, filed May 15, 2013, which is incorporated by reference in its entirety.

BACKGROUND

[0002] 1. Field of the Invention

[0003] The present invention generally relates to facilitating faster checkout, and more specifically to pre-populating a checkout page.

[0004] 2. Related Art

[0005] Online or electronic commerce has become a large part of the global economy. Consumers are now able to purchase items through a merchant website. When a consumer makes a repeat purchase on a merchant website, the consumer frequently needs to provide payment information again, even though it was previously provided. The consumer typically goes through several review pages before giving a final approval of the payment. Further, each review page generally requires confirmation from the consumer of the information displayed on the page before letting the consumer move to the next review page. Such a typical payment process involves multiple review pages and is very time consuming and frustrating. The consumer typically does not wish to change any information related to payment and just wants to checkout as quickly as possible.

[0006] During the multi-page review process, many things may happen that interrupt a successful payment transaction. The Internet connection may be lost or un-stabilized in the middle, in which case the consumer may have to start the entire payment process over from the first page. Or, in the middle of multi-page review, the consumer may be interrupted by other matters or persons that may demand the consumer's immediate attention and stop the payment process before completion. Of course, the consumer may return and start the payment process over later on, but such return is not guaranteed. The consumer may lose interest in the attempted purchase or give up the purchase because a special sale or promotion period is over. Or, the consumer may just choose to give up the purchase out of frustration. In any case, the unsuccessful or incomplete payment session results in lost sales for the merchant and an unsatisfactory purchase experience for the consumer.

[0007] Therefore, a need exists for systems and methods that can eliminate multiple review pages during checkout.

BRIEF DESCRIPTION OF THE FIGURES

[0008] FIG. 1 is a block diagram illustrating a system for facilitating a purchase according to an embodiment of the present disclosure;

[0009] FIG. 2 is a block diagram of a system for implementing a device according to an embodiment of the present disclosure;

[0010] FIG. 3 is a flowchart showing a method for facilitating a purchase according to an embodiment of the present disclosure;

[0011] FIG. 4 is a screenshot of an interface that is displayed to a user during an opt-in step.

[0012] FIG. 5 is a screenshot of an interface that is displayed to a user during one-page checkout.

[0013] Embodiments of the present disclosure and their advantages are best understood by referring to the detailed description that follows. It should be appreciated that like reference numerals are used to identify like elements illustrated in one or more of the figures, wherein showings therein are for purposes of illustrating embodiments of the present disclosure and not for purposes of limiting the same.

DETAILED DESCRIPTION

[0014] The present disclosure describes techniques for facilitating faster checkout for a user. A user logs in to a payment service provider site. After a user has provided authorization, the user's information is captured and a cookie is placed on the user's device by the payment service provider. When the user goes on a merchant website and checks out using the payment service provider, the payment service provider detects the cookie on the user device. The payment service provider uses the cookie to populate a one-page checkout page (or single checkout page) with the last used payment method and, in some embodiments a shipping address. In one embodiment, the shipping address is the last used shipping address stored by payment service provider. In other embodiments, the shipping address is supplied by the merchant.

[0015] In various embodiments, a user may use a service or payment service provider, such as PayPal®, Inc. of San Jose, Calif., for making a payment for a purchase. After selecting the link to the payment provider, the user is directed to the payment service provider's website through a pop-up screen on the merchant site.

[0016] Typically, if the user has previously accessed the payment service provider's website for payment using the same user device, a cookie, issued by the payment service provider, is stored on the web browser of the user's device. In one embodiment, the cookie may contain user information such as user name and email address and/or information on the user's previous payment transaction performed via the payment service provider. In another embodiment, the cookie stores information on whether or not the user is eligible for faster checkout. For example, the payment service provider may decide that a user is eligible only if he or she is on a personal device or private computer, if no currency conversion is required, if the merchant does not require a gift or voting option, or if the merchant does not use merchant call-back capabilities.

[0017] When the user revisits the payment provider's website, the cookie stored on the user's web browser is automatically read by the payment service provider. The user may then be taken to a one-page checkout page offered by the payment service provider. In various embodiments, once the cookie is read, the last used payment method and in some embodiments a shipping address, populate the one-page checkout page, even before the user logs in to the payment service provider site. The shipping address may be the last used shipping address stored by the payment service provider, or may be supplied by the merchant associated with the merchant site. In some embodiments, a merchant may not want or need a shipping address (e.g., digital goods that don't require shipping), and no shipping address is displayed on the one-page checkout page.

[0018] FIG. 1 is a block diagram of a networked system 100 configured to handle processes, such as described herein, in

accordance with an embodiment of the invention. System 100 includes a user device 110, a merchant server 140, and a payment service provider server 170 in communication over a network 160. Payment provider server 170 may be maintained by a service or payment provider, such as PayPal®, Inc. or eBay®, Inc. of San Jose, Calif. A user 105, such as a consumer, utilizes user device 110 to make a purchase transaction facilitated by payment service provider server 170, with one or more merchants.

[0019] User device 110, merchant server 140, and payment service provider server 170 may each include one or more processors, memories, and other appropriate components for executing instructions such as program code and/or data stored on one or more computer readable mediums to implement the various applications, data, and steps described herein. For example, such instructions may be stored in one or more computer readable media such as memories or data storage devices internal and/or external to various components of system 100, and/or accessible over network 160.

[0020] Network 160 may be implemented as a single network or a combination of multiple networks. For example, in various embodiments, network 160 may include the Internet or one or more intranets, landline networks, wireless networks, and/or other appropriate types of networks.

[0021] User device 110 may be implemented using any appropriate hardware and software configured for wired and/or wireless communication over network 160. For example, in one embodiment, the user device may be implemented as a personal computer (PC), a smart phone, personal digital assistant (PDA), laptop computer, and/or other types of computing devices capable of transmitting and/or receiving data, such as an iPad™ from Apple™.

[0022] User device 110 may include one or more browser applications 115 which may be used, for example, to provide a convenient interface to permit user 105 to browse information available over network 160. For example, in one embodiment, browser application 115 may be implemented as a web browser configured to view information available over the Internet or access a website of the payment provider. User device 110 may also include one or more toolbar applications 120 which may be used, for example, to provide client-side processing for performing desired tasks in response to operations selected by user 105. In one embodiment, toolbar application 120 may display a user interface in connection with browser application 115.

[0023] User device 110 may further include other applications 125 as may be desired in particular embodiments to provide desired features to user device 110. For example, other applications 125 may include security applications for implementing client-side security features, programmatic client applications for interfacing with appropriate application programming interfaces (APIs) over network 160, or other types of applications. Applications 125 may also include email, texting, voice and IM applications that allow user 105 to send and receive emails, calls, texts, and other notifications through network 160. User device 110 includes one or more user identifiers 130 which may be implemented, for example, as operating system registry entries, cookies associated with browser application 115, identifiers associated with hardware of user device 110, or other appropriate identifiers, such as used for payment/user/device authentication or identification. In one embodiment, user identifier 130 may be used by a payment service provider to associate user 105 with a particular account maintained by the payment provider. A com-

munications application 122, with associated interfaces, enables user device 110 to communicate within system 100.

[0024] Merchant server 140 may be maintained, for example, by a merchant or seller offering various items, products and/or services through an online site or app. Generally, merchant server 140 may be maintained by anyone or any entity that receives money, which includes charities as well as retailers and restaurants. Merchant server 140 includes a database 145 identifying available products and/or services (e.g., collectively referred to as items) which may be made available for viewing and purchase by user 105. Database 145 may also include shipping addresses of the merchant's customers, e.g., user 105. Merchant server 140 also includes a marketplace application 150 which may be configured to serve information over network 160 to browser 115 of user device 110 and/or payment provider server 170. In one embodiment, user 105 may interact with marketplace application 150 to view various items available for purchase from the merchant.

[0025] Merchant server 140 also includes a checkout application 155 which may be configured to facilitate the purchase by user 105 of goods or services identified by marketplace application 150. Checkout application 155 may be configured to accept payment information from or on behalf of user 105 through payment service provider server 170 over network 160. For example, checkout application 155 may receive and process a payment confirmation from payment service provider server 170, as well as transmit transaction information to the payment provider and receive information from the payment service provider (e.g., a transaction ID). Checkout application 155 may also be configured to accept one or more different funding sources for payment.

[0026] The merchant server 140, in one embodiment, may include at least one merchant identifier 160, which may be included as part of the one or more items made available for purchase so that, e.g., particular items are associated with particular merchants. In one implementation, the merchant identifier 160 may include one or more attributes and/or parameters related to the merchant, such as business and banking information. In various embodiments, user 105 may conduct transactions (e.g., searching, selection, monitoring, purchasing, and/or providing payment for items) with each merchant server 140 via the payment service provider server 170 over the network 160.

[0027] A merchant website may also communicate (for example, using merchant server 140) with the payment service provider through payment service provider server 170 over network 160. For example, the merchant website may communicate with the payment service provider in the course of various services offered by the payment service provider to merchant website, such as payment intermediary between customers of the merchant website and the merchant website itself. For example, the merchant website may use an application programming interface (API) that allows it to offer sale of goods in which customers are allowed to make payment through the payment service provider, while user 105 may have an account with the payment service provider that allows user 105 to use the payment service provider for making payments to merchants that allow use of authentication, authorization, and payment services of payment service provider as a payment intermediary. The merchant website may also have an account with the payment service provider.

[0028] Payment service provider server 170 may be maintained, for example, by an online service provider which may provide payment between user 105 and the operator of mer-

merchant server 140. In this regard, payment provider server 170 includes one or more payment applications 175 which may be configured to interact with user device 110 and merchant server 140 over network 160 to facilitate the purchase of goods or services by user 105 of user device 110 as well as search merchant offerings and prices as discussed above.

[0029] Payment service provider server 170 also maintains a plurality of user accounts 180, each of which may include account information 185 associated with individual users. For example, account information 185 may include private financial information of users of devices such as account numbers, passwords, device identifiers, user names, phone numbers, credit card information, bank information, or other financial information which may be used to facilitate online transactions by user 105. Account information 185 may also include information associated with the payment process described herein. Advantageously, payment application 175 may be configured to interact with merchant server 140 on behalf of user 105 during a transaction with checkout application 155 to handle payments.

[0030] A transaction processing application 190, which may be part of payment application 175 or separate, may be configured to receive information from a user device and/or merchant server 140 for processing and storage in a payment database 195 as described above. Transaction processing application 190 may include one or more applications to process information from user 105 and/or the merchant for processing a transaction from user device 110 as described herein. As such, transaction processing application 190 may store details of a transaction or from an email and associate the details accordingly with individual users. Payment application 175 may be further configured to determine the existence of and to manage accounts for user 105, as well as create new accounts if necessary, such as the set-up and management, and provide various services as described herein.

[0031] FIG. 2 is a block diagram of a computer system 200 suitable for implementing one or more embodiments of the present disclosure. In various implementations, the user device may comprise a personal computing device (e.g., a personal computer, laptop, smart phone, tablet, PDA, Bluetooth device, key FOB, badge, etc.) capable of communicating with the network. The merchant and/or payment service provider may utilize a network computing device (e.g., a network server) capable of communicating with the network. It should be appreciated that each of the devices utilized by users, merchants, and payment service providers may be implemented as computer system 200 in a manner as follows.

[0032] Computer system 200 includes a bus 202 or other communication mechanism for communicating information data, signals, and information between various components of computer system 200. Components include an input/output (I/O) component 204 that processes a user action, such as selecting keys from a keypad/keyboard, selecting one or more buttons or links, etc., and sends a corresponding signal to bus 202. I/O component 204 may also include an output component, such as a display 211 and a cursor control 213 (such as a keyboard, keypad, mouse, etc.). One or more optional audio/video (A/V) input/output (I/O) components 205 may also be included to allow a user to use voice and/or video for inputting information by converting audio signals. A/V I/O component 205 may allow the user to hear audio. A transceiver or network interface 206 transmits and receives signals between computer system 200 and other devices, such as another user device, a merchant server, or a payment service

provider server via network 260. In one embodiment, the transmission is wireless, although other transmission mediums and methods may also be suitable. A processor 212, which can be a micro-controller, digital signal processor (DSP), or other processing component, processes these various signals, such as for display on computer system 200 or transmission to other devices via a communication link 218. Processor 212 may also control transmission of information, such as cookies or IP addresses, to other devices.

[0033] Components of computer system 200 also include a system memory component 214 (e.g., RAM), a static storage component 216 (e.g., ROM), and/or a disk drive 217 to store information, such as account information, transaction numbers, machine IDs, and other information described above. Computer system 200 performs specific operations by processor 212 and other components by executing one or more sequences of instructions contained in system memory component 214. Instructions may be performed by one or more processors 212. Logic may be encoded in a computer readable medium, which may refer to any medium that participates in providing instructions to processor 212 for execution. Such a medium may take many forms, including but not limited to, non-volatile media, volatile media, and transmission media. In various implementations, non-volatile media includes optical or magnetic disks, volatile media includes dynamic memory, such as system memory component 214, and transmission media includes coaxial cables, copper wire, and fiber optics, including wires that comprise bus 202. In one embodiment, the logic is encoded in non-transitory computer readable medium. In one example, transmission media may take the form of acoustic or light waves, such as those generated during radio wave, optical, and infrared data communications.

[0034] Some common forms of computer readable media includes, for example, floppy disk, flexible disk, hard disk, magnetic tape, any other magnetic medium, CD-ROM, any other optical medium, punch cards, paper tape, any other physical medium with patterns of holes, RAM, PROM, EPROM, FLASH-EPROM, any other memory chip or cartridge, or any other medium from which a computer is adapted to read.

[0035] In various embodiments of the present disclosure, execution of instruction sequences to practice the present disclosure may be performed by computer system 200. In various other embodiments of the present disclosure, a plurality of computer systems 200 coupled by communication link 218 to the network (e.g., such as a LAN, WLAN, PTSN, and/or various other wired or wireless networks, including telecommunications, mobile, and cellular phone networks) may perform instruction sequences to practice the present disclosure in coordination with one another.

[0036] Referring now to FIG. 3, a flowchart 300 for facilitating a purchase is illustrated according to an embodiment. The user 105 goes through a conventional checkout process. For example, the user 105 may access a merchant site, seller site, marketplace site, or other site or mobile app that enables a user to shop and make a purchase. Access may be through a PC, computing tablet, smart phone, or other computing device. The purchase may be items, physical goods, digital goods, donations, services, etc.

[0037] The user 105 then selects desired items for purchase. Note that items, as used herein, may include one or more of the different purchases listed above. The selected items may be placed in a cart, which the user 105 can review and edit if

needed. The user **105** continues by entering information for the purchase, such as shipping address, billing address for a credit card, and funding source information. Such information may be pre-populated if it was saved within the site. In that case, the user **105** would simply need to confirm the information or revise if needed. If the information is not saved, the user **105** may need to manually enter the requested information.

[0038] Once the requested information has been entered or provided, the user **105** may confirm the order. Before confirmation, the user **105** may be presented with details of the purchase, such as item description, item prices, total price, shipping costs, tax, etc. If the details are acceptable and correct, the user **105** may select a “Confirm,” “Pay,” or other button or link to confirm the order.

[0039] If the user **105** is paying with a payment service provider, such as PayPal® Inc. of San Jose, the user **105** selects an appropriate button or link on the merchant page. The user **105** is then presented with a login screen, either as a new page or a pop-up screen on the same page, requesting login information, such as a user identifier (e.g., user name, email address) and a password or PIN.

[0040] FIG. 4 is an example page that is shown to the user **105**. To the left is the order summary **402**, while the right includes areas **404** for entering email and password information. In various embodiments, at step **302**, the user **105** opts-in to the one-page checkout experience. For example, the user **105** checks a box **406**, confirming that the user device he or she is using is a private computer and indicating that he or she wants a more streamlined checkout experience.

[0041] Once this authorization is obtained, at step **304**, the payment service provider captures user information during the session and drops a cookie on the user device **110**. The cookie indicates to the payment service provider that the user **105** is eligible and authorized for one-page checkout. In some embodiments, user information is stored as cookies and may include the user **105**'s identification, password, address, and payment information. Payment is processed at step **306** and is subsequently logged out of the payment service provider site.

[0042] At step **308**, the user **105** makes another purchase on a merchant site and once again, uses the payment service provider to pay for the purchase. The payment service provider detects the cookie on the user device **120** at step **310** and makes sure that the user **105** is eligible for and authorized to use the one-page checkout service. In some cases, the cookie may not be sized big enough to store all information necessary for processing a payment, such as the last used funding source information or the last used shipping address, which can be long. In this situation, the payment service provider may retrieve a minimum amount of data indicating the user **105**'s eligibility to use the one-page checkout page feature from user **105**'s browser and retrieve the last used funding source information and/or the last used shipping address from a database.

[0043] When the cookie does store the last used funding source and the last used shipping address, it may store them in partially masked format. When saving the last used funding source, the cookie generally stores the total number of available funding sources. Further, if there is a back-up funding source, such as a credit card, in addition to the last used funding source, such as a bank, the cookie stores both bank information and the credit card information.

[0044] At step **312**, the user **105** is taken to the one-page checkout page. The one-page checkout page may be dis-

played as new page or a pop-up screen on the same page. FIG. 5 is an example of the one-page checkout page. The one-page checkout page may display, in an embodiment of the present disclosure, the stored name **504** and the email address **506** of the user **105**, the shipping address **508**, the last used payment method **510**, the password field **512** and the pay button **514**. The name of the user **105**, stored in the cookie or identified via a user identifier stored in the cookie, may be shown on the one-page checkout page, along with a welcoming message, such as “Welcome back, [the user's name].” The email address of the user, which may be also stored in the cookie or retrieved from a database using the cookie, may be displayed in an un-editable form. At this point, the user **105** need only provide his or her password and press “Pay” to complete the transaction.

[0045] If the user **105** who is on the one-page checkout page is not the one whose name is shown, a link, such as “Not you?” may be provided next to the displayed name so that the user **105** can make a change. When the user **105** clicks on the link, the link takes the user **105** to the login page of the payment service provider where he or she can log in by providing a login ID such as an email address and a password or PIN.

[0046] The shipping address **508**, taken from the cookie, retrieved from a payment service provider database using the cookie, or supplied by the merchant associated with the merchant site, is displayed on the one-page checkout page in FIG. 5. In one embodiment, the merchant requires a shipping address, but no shipping address is provided by the user **105**. In this case, the shipping address may be provided by the payment service provider or supplied by the merchant. When the shipping address is provided by the payment service provider, a portion of the shipping address information may be masked as stored in the cookie, leaving only a portion sufficient for the user **105** to recognize it. For example, the street name of the shipping address may be denoted as “xxxxx.” When the shipping address is supplied by the merchant, the full address is shown. Also, if the user **105** wishes to view or change the shipping address, a link that reads, for example, “view/change,” may be provided next to the last used shipping address. Again, if clicked or otherwise selected, the link will take the user **105** to the login page of the payment service provider.

[0047] In some embodiments, the shipping address is not displayed on the one-page checkout page. This may happen when the user **105** has newly provided and confirmed a shipping address for the current purchase at the merchant's site before being directed to the payment service provider's website, when the merchant may have requested to redirect the user **105** to the merchant site after processing the payment at the one-page checkout to determine the shipping address then, or when the merchant has requested the payment service provider not to show the shipping address for various business reasons.

[0048] The last payment method **510** used by the user **105** is displayed on the one-page checkout page in FIG. 5. For example, the last payment method may be a credit card, debit card, bank account, or account with the payment service provider. In some embodiments, when the last used funding source is shown as the primary funding source, and if there is a back-up funding source saved in the cookie, both the primary and back-up funding sources are displayed. For example, if the last used funding source is a bank and the back-up funding source is a credit card, both the primary bank

and the back-up credit card information are shown. When showing the credit card information, the one-page checkout page may also show the merchant descriptor as will be shown in the account statement of the funding source, such as "This transaction will appear on your bill as a payment to [the merchant's name the payment is made to]." Such a merchant descriptor may be obtained either from the cookie or from other independent data sources saved with the payment service provider. Further, when showing the last used funding source information, part of the information may be masked as stored in the cookie in an embodiment. For example, when the funding source is a credit card, the entire account number except for the last two or three digits may be masked. If the user **105** wishes to view or change the funding source(s), a link that reads as, for example, "view/change," may be provided next to the last used funding source information displayed. If clicked or otherwise selected, the link will take the user to the login page of the payment service provider.

[0049] In one embodiment, the last used payment method and the last used shipping address are the method and address most recently used with the payment service provider. For example, if the last time the user **105** used the payment service provider, he or she used a credit card and home address, then the credit card and home address are displayed.

[0050] In another embodiment, the last used payment method and the last used shipping address are the method and address most recently used for a particular merchant. For example, if the last time the user **105** shopped at Bath & Body Works, he or she used a bank account number and a business address, then the next time the user **105** shops at Bath & Body Works, the bank account number and business address are displayed.

[0051] The one-page checkout page may also display a password field **512** for the user **105** to enter the password he or she has with the payment service provider, and a pay button **514** that reads, for example, "Pay." Requiring the password is an added measure of user authentication to prevent fraud such as when a wrongdoer acquires the user's device and accesses the one-page checkout page using the true user's cookie in the user's device. Entering the password and clicking on the pay button authenticate the user **105**, confirm that all the information displayed on the one-page checkout page is correct, and show approval by the user **105** to proceed with the payment.

[0052] After entering a password into the password field and selecting the pay button, the login process is automatically processed with the provided password. If the login fails, for example, from a mistyped password, an error message may pop up and the user **105** may be given a chance to retype the password on the one-page checkout page or a separate pop-up window. If the login fails for a second time, the user **105** may be directed to the login page of the payment service provider for logging in and processing payment, via a more conventional checkout process. In this case, the cookie value in the user's web browser may be cleared off or overwritten by new features.

[0053] In some situations, clicking on the pay button may not result in the instantaneous processing of the payment. Some merchants may require the user **105** to be redirected back to the merchant site after checking out at the payment service provider site, and the payment to be actually processed by the payment service provider only when the merchant subsequently transmits a call, such as a Do Express Checkout Call, to the payment service provider. In this case, instead of the "Pay" button or a link for a user's confirmation

and approval, the one-page checkout page may read as "Continue." Clicking on this button takes the user **105** to the merchant site.

[0054] If the automatic and direct login from the one-page checkout page is successful, the payment service provider may call an internal service to check if the last used funding source shown on the one-page checkout page and confirmed by the user **105** conforms with the default funding source assigned by the payment service provider or determined by the user **105** during the account set up. If they are the same, then the payment service provider processes payment with the last used funding source. If it is accepted without any error, the payment service provider directs the user **105** to the next destination, which may be either a confirmation page ("done" page) or the merchant's site on which the user **105** made the current purchase. The one-page checkout page is removed from the display. At step **314**, the payment is processed.

[0055] If, however, the default funding source is different from the last used funding source shown on the one-page checkout page, or if the last used funding source is known to be inadequate by, for example, account expiration, insufficient balance, or temporary malfunctioning for technical reasons, then the user **105** may be taken to a review page of the payment service provider where the user **105** is shown a message explaining the situation and asked to reconsider, confirm, change, add, or choose the funding source for the current purchase. In this situation, in some embodiments, the payment service provider may automatically choose and suggest a funding source for the user **105** to confirm. Any other kind of error that may happen after the user **105** selects the pay button on the one-page checkout page may take the user **105** to the same kind of the review page of the payment service provider, where the user **105** may be given a chance to sort out things to correct the error.

[0056] In the above description, the last used information is provided on the one-page checkout page. However, different information may be displayed. For example, the most widely used funding source or the most widely used shipping address may be displayed instead of the last used funding source or shipping address.

[0057] Where applicable, various embodiments provided by the present disclosure may be implemented using hardware, software, or combinations of hardware and software. Also, where applicable, the various hardware components and/or software components set forth herein may be combined into composite components comprising software, hardware, and/or both without departing from the spirit of the present disclosure. Where applicable, the various hardware components and/or software components set forth herein may be separated into sub-components comprising software, hardware, or both without departing from the scope of the present disclosure. In addition, where applicable, it is contemplated that software components may be implemented as hardware components and vice-versa.

[0058] Software, in accordance with the present disclosure, such as program code and/or data, may be stored on one or more machine readable mediums, including non-transitory machine readable medium. It is also contemplated that software identified herein may be implemented using one or more general purpose or specific purpose computers and/or computer systems, networked and/or otherwise. Where applicable, the ordering of various steps described herein may be

changed, combined into composite steps, and/or separated into sub-steps to provide features described herein.

What is claimed is:

1. A system comprising:
 - a memory device storing payment information of a user; and
 - one or more processors in communication with the memory device and operable to:
 - receive a payment request from a user device associated with the user;
 - detect a cookie on the user device associated with the user; and
 - present on the user device a single checkout page displaying at least a portion of a last used payment method of the user using the cookie.
2. The system of claim 1, wherein the single checkout page is presented as a new page or a pop-up screen on a merchant site.
3. The system of claim 2, wherein the one or more processors is further operable to redirect the user to the merchant site, remove the pop-up screen, or both, when payment is completed.
4. The system of claim 1, wherein the one or more processors is further operable to present at least a portion of a shipping address of the user.
5. The system of claim 4, wherein the shipping address comprises a last used shipping address of the user.
6. The system of claim 4, wherein the one or more processors is further operable to receive a different payment method, a different shipping address, or both, from the user.
7. The system of claim 1, wherein the cookie indicates that the user is eligible to use the single checkout page.
8. The system of claim 6, wherein the cookie is used to retrieve the last used payment method and a last used shipping address of the user.
9. A method for facilitating a purchase, comprising:
 - receiving, by one or more hardware processors of a payment service provider, a payment request from a user device associated with a user;
 - detecting, by the one or more hardware processors of a payment service provider, a cookie on the user device associated with the user; and

presenting on the user device, by the one or more hardware processors, a single checkout page displaying at least a portion of a last used payment method of the user using the cookie.

10. The method of claim 9, wherein the single checkout page is presented as a new page or a pop-up screen on a merchant site.

11. The method of claim 9, further comprising presenting at least a portion of a shipping address of the user.

12. The method of claim 11, further comprising receiving a different payment method, a different shipping address, or both, from the user.

13. The method of claim 9, wherein the cookie indicates that the user is eligible to use the single checkout page.

14. The method of claim 13, wherein the cookie is used to retrieve the last used payment method and a last used shipping address of the user.

15. A non-transitory machine-readable medium comprising a plurality of machine-readable instructions which, when executed by one or more processors, are adapted to cause the one or more processors to perform a method comprising:

- receiving a payment request from a user device associated with a user;

- detecting a cookie on the user device associated with the user; and

- presenting on the user device a single checkout page displaying at least a portion of a last used payment method of the user using the cookie.

16. The non-transitory machine-readable medium of claim 15, wherein the method further comprises redirecting the user to a merchant site, removing a pop-up screen of the single checkout page, or both, when payment is completed.

17. The non-transitory machine-readable medium of claim 15, wherein the method further comprises presenting at least a portion of a shipping address of the user.

18. The non-transitory machine-readable medium of claim 17, wherein the shipping address comprises a last used shipping address of the user.

19. The non-transitory machine-readable medium of claim 15, wherein the cookie indicates that the user is eligible to use the single checkout page.

20. The non-transitory machine-readable medium of claim 19, wherein the cookie is used to retrieve the last used payment method and a last used shipping address of the user.

* * * * *