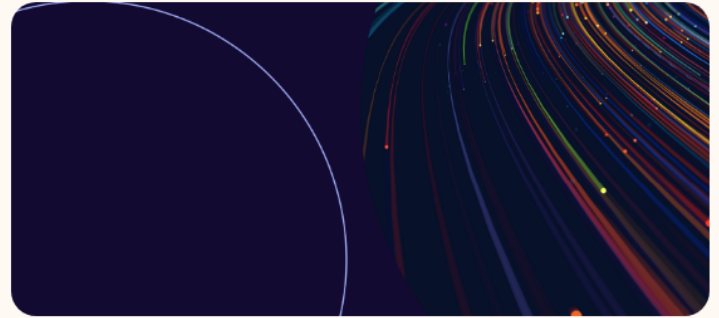




Wi-Fi® (MAC/PHY)

Wi-Fi Alliance® drives advancement and adoption of each generation of Wi-Fi®, such as Wi-Fi CERTIFIED 6® and Wi-Fi CERTIFIED 7™.



Wi-Fi (MAC/PHY) technologies

Wi-Fi 7

Wi-Fi 6

Wi-Fi 5

Wi-Fi 4

Wi-Fi HaLow™

WiGig

Wi-Fi CERTIFIED 6®

Wi-Fi 6 was introduced in 2018 provides enhanced capacity, efficiency, coverage, and performance required by users today in the most demanding Wi-Fi environments, including large public venues, enterprises, and Internet of Things (IoT) scenarios. Wi-Fi 6 offers higher data rates, increased capacity, stronger performance in dense environments, and improved power efficiency.

Wi-Fi 6E certification as part of Wi-Fi CERTIFIED 6 offers the features and capabilities of Wi-Fi 6, extended to the 6 GHz band. Wi-Fi 6E delivers improvements that enable Wi-Fi devices to operate efficiently in the most dense, bandwidth-intensive, and dynamic connectivity environments.

Key features of Wi-Fi 6 include:

- Orthogonal frequency division multiple access



Google
Exhibit 1107
Google v. Advanced Coding
IPR2025-01161
Ex. 1107-001

operate efficiently in the most dense, bandwidth-intensive, and dynamic connectivity environments.

Key features of Wi-Fi 6 include:

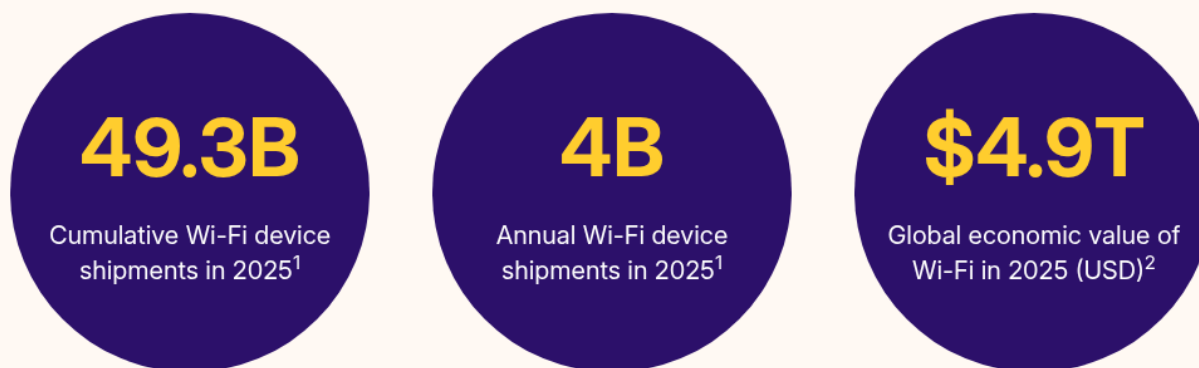
- Orthogonal frequency division multiple access (OFDMA) effectively shares channels to increase network efficiency and lower latency
- Multi-user multiple input, multiple output (multi-user MIMO) allows more data to be transferred at one time, enabling APs to concurrently handle more devices
- 160 MHz channel utilization capability increases bandwidth to deliver greater performance with low latency
- Target wake time (TWT) significantly improves network efficiency and device battery life
- 1024 QAM increases throughput for emerging, bandwidth intensive uses by encoding more data in the same amount of spectrum
- Transmit beamforming enables higher data rates at a given range to increase network capacity



[View all resources](#)

Wi-Fi by the numbers

Wi-Fi will see significant growth in shipments and economic value in 2025.



Wi-Fi 6 & Wi-Fi 7 impact

The latest generations of Wi-Fi will continue to have a substantial impact on Wi-Fi markets and the economy.

Wi-Fi 6 & Wi-Fi 7 impact

The latest generations of Wi-Fi will continue to have a substantial impact on Wi-Fi markets and the economy.

625.1M

Wi-Fi 7 product shipments in 2025¹

51%

Share of U.S. Wi-Fi carrier traffic through Wi-Fi 7 in 2027³

2.9B

Wi-Fi 6 product shipments in 2025¹

\$527.6B

Global economic value of Wi-Fi 6 in 2025 (USD)²

¹ IDC Research, 2024

² Telecom Advisory Services, 2021

³ Telecom Advisory Services, 2024

Generational Wi-Fi featured resources

[View all resources](#) >



Wi-Fi CERTIFIED 7™: Driving next-level Wi-Fi® performance

Wi-Fi CERTIFIED 7™ introduces powerful new features that boost Wi-Fi performance and improve connectivity across a variety of environments. Cutting-edge capabilities in Wi-Fi CERTIFIED 7 enable...

Blog

[Powering a connected world: Wi-Fi® momentum in 2025](#)

Highlights

[Wi-Fi CERTIFIED 7™ Highlights](#)

Paper

[Wi-Fi CERTIFIED 7™ Technology Overview \(2024\)](#)

Highlights

[Wi-Fi CERTIFIED 6® Highlights](#)



[Solutions +](#)

[Membership +](#)

[Certification +](#)

[Advocacy & Regulatory +](#)

[News & Events +](#)

[Resources +](#)

625.1M

Wi-Fi 7 product shipments in 2025¹

51%

Share of U.S. Wi-Fi carrier traffic through Wi-Fi 7 in 2027³

2.9B

Wi-Fi 6 product shipments in 2025¹

\$527.6B

Global economic value of Wi-Fi 6 in 2025 (USD)²

¹ IDC Research, 2024

² Telecom Advisory Services, 2021

³ Telecom Advisory Services, 2024

Generational Wi-Fi featured resources

[View all resources >](#)



Wi-Fi CERTIFIED 7™: Driving next-level Wi-Fi® performance

Wi-Fi CERTIFIED 7™ introduces powerful new features that boost Wi-Fi performance and improve connectivity across a variety of environments. Cutting-edge capabilities in Wi-Fi CERTIFIED 7 enable...

Blog

[Powering a connected world: Wi-Fi® momentum in 2025](#)

Highlights

[Wi-Fi CERTIFIED 7™ Highlights](#)

Paper

[Wi-Fi CERTIFIED 7™ Technology Overview \(2024\)](#)

Highlights

[Wi-Fi CERTIFIED 6® Highlights](#)



[Solutions +](#)

[Membership +](#)

[Certification +](#)

[Advocacy & Regulatory +](#)

[News & Events +](#)

[Resources +](#)

[About Us +](#)



[Privacy Policy](#) | [Terms of Use](#) | [Vulnerability Reporting](#)

[Contact Us](#)

© 2025 Wi-Fi Alliance. All rights reserved.

Wi-Fi®, Wi-Fi CERTIFIED®, Wi-Fi Alliance®, the Wi-Fi logo, the Wi-Fi CERTIFIED logo, and other marks are trademarks of Wi-Fi Alliance.