

ADAPTIVE INDUCTIVE POWER SUPPLY

RELATED APPLICATIONS

This application claims priority to and benefit of U.S. Provisional Application No. 60/444,794, entitled Adaptively Inductively Coupled Ballast Circuit, by David W. Baarman, filed February 4, 2003. The full disclosure of the prior application is incorporated herein by reference. This application is a continuation-in-part of U.S. patent application Serial No. 10/175,095 entitled Fluid Treatment System, which was filed on June 18, 2002, which is a continuation-in-part of U.S. patent application Serial No. 09/592,194, entitled Fluid Treatment System, which was filed on June 12, 2000. U.S. Patent Application No. 09/592,194 claims the benefit under 35 U.S.C. §119(e) of U.S. provisional patent application Serial No. 60/140,159 entitled Water Treatment System with an Inductively Coupled Ballast, which was filed on June 21, 1999, and U.S. provisional patent application Serial No. 60/140,090, entitled Point-of-Use Water Treatment System, which was filed on June 21, 1999.

This application incorporates by reference the following applications filed on the same date and assigned to the same assignee as this application: Adaptive Inductive Power Supply with Communication, Serial No. _____; Inductive Coil Assembly, Serial No. _____; Electrostatic Charge Storage Assembly, Serial No. _____, and Adapter, Serial No. _____.

BACKGROUND OF THE INVENTION

This invention relates generally to contactless power supplies, and more specifically to inductively coupled contactless power supplies.

Contactless energy transmission systems (CEETS) transfers electrical energy from one device to another without any mechanical connection. Because there is no mechanical

connection, CEETS have many advantages over conventional energy systems. They are generally safer because there is little danger of sparks or electric shocks due to the isolation of the power supply. They also tend to have a longer life since there are no contacts to become worn. Due to these advantages, CEETS have been used in everything from toothbrushes to
5 portable telephones to trains.

CEETS are composed of power supplies and remote devices. The remote devices could be chargeable, such as batteries, micro-capacitors, or any other chargeable energy source. Alternatively, CEETS could directly power the devices.

One kind of CEETS uses magnetic induction to transfer energy. Energy from a
10 primary winding in the power supply is transferred inductively to a secondary winding in the chargeable device. Because the secondary winding is physically spaced from the primary winding, the inductive coupling occurs through the air.

Without a physical connection between the primary winding and the secondary winding, conventional feedback control is not present. Thus, control of the energy transfer in a
15 CEETS from the primary to the secondary is difficult.

One common solution is to design a CEETS dedicated to one type of device. For example, a CEETS for a rechargeable toothbrush is designed only for recharging a toothbrush, while a CEETS for a rechargeable telephone works only with a specific type of telephone. While this solution allows the CEET to operate effectively with one particular device, it fails to
20 be sufficiently flexible to allow the power supply to operate with different rechargeable devices.

Obviously, making a CEETS for each specific chargeable device is costly and inefficient. Thus, a system for contactless energy transmission which is efficient and can be used with a large variety of devices is highly desirable.

SUMMARY OF THE INVENTION

The aforementioned problems are overcome in the present invention.

A contactless power supply inductively couples by way of a tank circuit to a device. The power supply has a controller for dynamically adjusting the resonant frequency of the tank circuit. The tank circuit could have either a variable capacitor or a variable inductor, or both. In one embodiment, the power supply also may have an inverter. A drive circuit connected to the inverter controls the frequency of the inverter and the duty cycle of the inverter. A controller with an attached memory directs the operation of the inverter by way of the drive circuit. Alternatively, The inverter may also be connected to a DC power source. The controller could then change the rail voltage of the DC power source .

By altering the resonant frequency of the tank circuit, the frequency of the inverter, the duty cycle of the inverter and the rail voltage of the power supply, the contactless power supply can energize a variety of different devices. The power supply can even energize several different devices at the same time. This ability to power a multitude of different devices overcomes many of the limitations previously associated with CEETS. Further, because the power supply can energize a variety of different devices, a central single source for supply power to a variety of small electronic devices is possible.

In one embodiment, a sensor may also be coupled to the tank circuit. It would monitor various operational characteristics of the tank circuit, such as the phase of the current within the tank circuit. These operation characteristics are indicative of the total load energized by the power supply. When the operational characteristics indicate that the power supply is not efficiently supplying power to the load, the controller causes the power supply to seek an improved configuration.

The process of seeking an improved configuration may include one or more of the following steps. The power supply could automatically attempt to compensate by changing the frequency of the inverter and the duty cycle of the inverter. If this sufficiently correct the efficiency of the power supply, the controller causes the tank circuit to change its resonant frequency. As is well known, the resonant frequency of a tank circuit is in fact a range centered about a frequency. The tank circuit will resonate at frequencies which are approximately the resonant frequency. However, the adaptive power supply described herein reconfigures the tank circuit to have a substantially different resonant frequency.

The tank circuit may consist of either a variable inductor or a variable capacitor or both. The controller would then change the inductance of the variable inductor or the capacitance of the variable capacitor, or both, thus causing the tank circuit to have a different resonant frequency.

The controller may also establish a new rail voltage for the DC power source. It also sets a new inverter frequency and a new duty cycle for the inverter. The adaptive power supply then operates with the new configuration.

If the adaptive power supply is still not operating effectively, the power supply will once again attempt to rectify the problem by changing the frequency of the inverter and the duty cycle of the inverter. If the problem is still not corrected, then the power supply will repeat the process of reconfiguring the tank circuit, setting a new inverter frequency and setting a new duty cycle.

This power supply continually searches for the most efficient settings to deliver power to the devices. However, if none of the various settings delivers power efficiently to the

devices, then the power supply will select the most efficient of the previous configurations and operate the power supply with those settings.

Thus, the power supply efficiently powers a variety of loads. Further, because the power supply is contactless, a user does not need to have a multitude of different power supplies
5 or connectors.

These and other objects, advantages and features of the invention will be more readily understood and appreciated by reference to the detailed description of the drawings.

BRIEF DESCRIPTION OF THE DRAWINGS

FIG. 1 is a block diagram of an adaptive inductive ballast in accordance with one
10 embodiment of the present invention.

FIG. 2 is a schematic diagram of the resonance-seeking ballast of the attached patent application marked to show changes to incorporate the adaptive inductive ballast of the present invention.

FIG. 3 is a flow chart illustrating operation of the adaptive inductive ballast.

15 FIG. 4 is a block diagram for an adaptive contactless energy transmission system.

FIGs. 5A and 5B are a flow chart showing the operating of an adaptive contactless energy transmission system.

DETAILED DESCRIPTION OF THE DRAWINGS

The present invention provides an adaptive inductive ballast circuit in which the
20 inductance and/or the capacitance of the power supply circuit is variable to provide a broad range of adaptability, thereby permitting the ballast circuit to power a variety of inductively powered devices with widely differing load characteristics. For purposes of disclosure, the present invention is described in connection with a resonance-seeking ballast circuit, and more

particularly in connection with the inductive ballast described in U.S. Patent Application Serial No.10/246,155 entitled "Inductively Coupled Ballast Circuit," which incorporated by reference into this application in its entirety. The present invention is, however, well suited for use with other inductive ballast circuits.

5 A block diagram showing the general construction of an adaptive inductive ballast 10 in accordance with one embodiment of the present invention is shown in FIG. 1. As illustrated, the adaptive inductive ballast 10 generally includes a microprocessor 12 that controls operation of the circuit, a multi-tap primary 14 for generating a magnetic field, a wave shaper and drive subcircuit 16 that generates the signal applied to the primary 14, a current sense
10 subcircuit 18 that monitors the signal applied to the primary 14 and provides corresponding feedback to the microprocessor 12, a capacitance switch 20 for adjusting the capacitance values in the wave shaper and drive subcircuit 16, and an inductance switch 22 for adjusting the inductance of the multi-tap primary 14. The microprocessor is a conventional microprocessor widely available from a variety of suppliers.

15 The capacitance switch 20 generally includes two banks of capacitors and a plurality of switches, such as transistors, that are selectively actuatable by the microprocessor 12 to control the values of the two capacitor banks. The capacitors in each bank can be arranged in series or parallel depending on the desired range and distribution of possible capacitance values. The first bank of capacitors replace capacitor 271 of the pre-existing resonance-seeking ballast
20 shown in the above referenced application. Similarly, the second back of capacitors replace capacitor 272 of the pre-existing resonance-seeking ballast shown in the above referenced patent application. In effect, the capacitance switch 20 makes capacitors 271 and 272 from the pre-existing resonance-seeking ballast into variable capacitors, the values of which are controlled by

the microprocessor 12. Alternatively, the described capacitance switch 20 can be replaced by other circuitry capable of providing variable capacitance.

The inductance switch 22 generally includes a multi-tap primary 14 and a plurality of switches, such as transistors, that are selectively actuatable by the microprocessor 12 to control the values of the inductance of the primary 14. The multi-tap primary 14 replaces primary 270 of the pre-existing resonance-seeking ballast shown in the attached patent application. In effect, the inductance switch 22 makes primary 270 from the pre-existing resonance-seeking ballast into a variable inductance coil by varying the number of turns in the primary 14, the value of which is controlled by the microprocessor 12. Alternatively, the described inductance switch 22 can be replaced by other circuitry capable of providing variable inductance.

In general operation, the microprocessor 12 is programmed to receive input from the current sense subcircuit 18, which is indicative of the current applied to the primary 14. The microprocessor 12 is programmed to separately adjust the capacitance switch 20 and the inductance switch 22 to cycle through the range of capacitance values and inductance values available to the circuit. The microprocessor 12 continues to monitor the input from the current sense circuit 18 while adjusting the capacitance and inductance values to determine which values provide optimum current to the primary 14. The microprocessor 12 then locks the adaptive ballast into the optimum settings.

Some of the changes required to adapt the resonance-seeking inductive ballast of the application patent application into an embodiment of the adaptive inductive ballast circuit 10 are noted in the schematic diagram of FIG. 2.

While the pre-existing resonance-seeking ballast is described in greater detail in U.S. Patent Application Serial No. 10/246,155, an overview of the circuit may be helpful to a fuller understanding of this invention. A ballast feedback circuit is connected at point A and a control circuit is connected at point B. Oscillator 144 provides half bridge inverter 148 with an alternating signal by way of drive 146. Half bridge inverter powers tank circuit 150. Current sensing circuit 218 provides feedback to oscillator 144. The feedback circuit, control circuit, oscillator, half bridge inverter, drive and current sensing circuit 218 as well as other supporting circuitry is more fully described in the above referenced patent application.

In FIG. 2, a phase delay could be inserted at E and can be controlled as a delay line or even DSP (Digital Signal Processing) could be used to delay this signal. This delay can be used to throttle the phase and control secondary amplitude. At F, switched capacitance can adjust the resonant frequency based on the adjustable primary inductance. Simple transistors can be used to switch in and out capacitance. The capacitance is changed when the primary inductor changes as to match load. At G, primary inductance can be switched to adjust the power required by the secondary circuit. With that load information, the control processor can adjust the inductance as needed to provide the power required. The inductance can be switched using transistors and multiple taps from the primary inductor controlled by the microprocessor.

The operating sequence of the adaptive inductive ballast circuit is described in more detail in connection with FIG. 3. In operation, the illustrated system waits until it determines that a load is present before applying power to the primary 14. This will save power and may be done by providing each inductively powered device with a magnet that actuates a reed switch adjacent to the primary. Alternatively, a user-actuated switch (not shown) may be provided so that the user can engage the power supply when an inductively powered device is

present. As another alternative, the inductively powered device may be configured to mechanically actuate a switch when it is placed into located by the primary to signal its presence. As a further alternative, the switching mechanism can be eliminated and the ballast circuit can provide power to the primary 14 regardless of the presence of a load.

5 Once the power supply circuit is activated, the circuit adjusts its frequency to optimize the current applied to the primary. After the appropriate operating frequency has been determined at initial capacitance and inductance values, the microprocessor locks the ballast circuit into the operating frequency and then begins to cycle through the range of inductance values available through the multi-tap primary. After each change in inductance value, the
10 microprocessor unlocks the operating frequency and permits the ballast circuit to seek resonance, settling at a frequency that provides optimal current to the primary. The microprocessor continues cycling through the available inductance values until it has determined which value provides optimal current to the primary. In one embodiment, a progressive scanning process is used to determine the appropriate inductance value. This is achieved by starting the scanning
15 process with the lowest inductance value, and sequentially stepping up the inductance value until the change in inductance value results in a reduction in the current applied to the primary. The microprocessor will then step back down one inductance value, where the greatest current was achieved. Alternatively, the scanning process may begin with the highest inductance value, and sequentially step down the inductance value until the change in inductance value results in a
20 reduction in the current applied to the primary. The microprocessor will then step back up one inductance value, where the greatest current was achieved. As another alternative, the microprocessor can step through each inductance value to determine the corresponding current,

and after stepping through each value, return to the inductance value that provided the greatest current to the primary.

After the appropriate inductance value is determined, the microprocessor locks the circuit at the determined inductance value and begins to cycle through the capacitance values.

5 In one embodiment, the microprocessor uses a progressive scanning technique to determine the capacitance that provides the primary with the greatest current. The scanning process may progress upwardly from the lowest capacitance value or downwardly from the highest capacitance value, as described above in connection with the scanning process for the inductance value. As an alternative to a progressive scanning process, the microprocessor can step through
10 each capacitance value to determine the corresponding current, and after stepping through each value, return to the capacitance value that provided the greatest current to the primary.

In this embodiment, the frequency of the ballast circuit is not permitted to vary once the appropriate inductance value has been determined. The microprocessor can, alternatively, be programmed to permit the ballast circuit to seek resonance after each change in
15 capacitance value.

In an alternative embodiment, the microprocessor may be programmed to provide adjustment of only the capacitance value or only the inductance value of the power supply circuit. In the former alternative, the multi-tap primary can be replaced by a conventional single-tap primary and the inductance switch can be eliminated. In the latter alternative, the capacitor
20 bank can be replaced by a single set of capacitors and the capacitance switch can be eliminated. In another alternative embodiment, the microprocessor can be programmed to adjust the capacitance before adjusting the inductance.

As noted above, the present invention is not limited to use in connection with a resonance-seeking ballast. In other applications, a current sensor may be incorporated into the ballast to provide input to the microprocessor that is representative of the current being applied to the primary. In operation without a resonance-seeking ballast, the microprocessor will
5 separately cycle through the various capacitance and inductance values to determine the values that provide optimum power to the primary.

In a further alternative embodiment, the adaptive inductive ballast 10 may include phase delay circuitry (not shown) that permits the ballast 10 to throttle the phase and control secondary amplitude. The phase delay circuitry may include a delay line or a Digital Signal
10 Processor (DSP) that is connected to the wave shaper and drive circuit 16 following the operational amplifier 210.

Further exemplifying the ideas and concepts expressed above, an additional embodiment for an adaptive contactless energy transmission system is shown in the block diagram of FIG. 4. The adaptive contactless energy transmission system is comprised of
15 adaptive inductive power supply 305 and remote device 307.

As is well known, power source 310 is a DC power source providing DC (direct current) power to inverter 312. Inverter 312 converts the DC power to AC (alternating current) power. Inverter 312 acts as an AC power source supplying the AC power to tank circuit 314. Tank circuit 314 is inductively coupled to secondary winding 316 of remote device 307.

20 Secondary winding 316 of remote device 307 has no core. Line 322 indicates an air gap between remote device 307 and adaptive inductive power supply 305.

Remote device 307 has a load 320. Load 320 could include a rechargeable device, such as a micro-capacitor or a rechargeable battery. Alternatively, load 320 could be a

lamp, radio or any other electrical device adapted to receive power from adaptive inductive power supply 305 whenever remote device 307 is placed in proximity of adaptive inductive power supply 305.

Circuit sensor 324 is coupled to the tank circuit 314 and inverter 312. Circuit
5 sensor 324 is also coupled to controller 326. Circuit sensor 324 provides information regarding the operational parameters of adaptive inductive power supply 305. For example, circuit sensor 324 could be a current sensor used to provide controller 326 information regarding the phase, frequency and amplitude of the current in tank circuit 314.

Controller 326 could be any one of a multitude of commonly available
10 microcontrollers programmed to perform the functions hereinafter described, such as the Intel 8051 or the Motorola 6811, or any of the many variants of those microcontrollers. Controller 326 could have a ROM (read only memory) and RAM (random access memory) on the chip. Controller 326 could have a series of analog and digital outputs for controlling the various functions within the adaptive inductive power supply.

15 Controller 326 is connected to memory 327. Controller 326 is also coupled to drive circuit 328. Drive circuit 328 regulates the operation of inverter 312, such as the frequency and timing of inverter 312. Drive circuit 328 could be constructed in a number of different manners. For example, driver circuit 328 could be constructed of discrete components such as transistors, resistors and capacitors; it could be a discrete integrated circuit designed to drive
20 inverters; or it could be a functional component of controller 326 if controller 326 were a microcontroller.

Controller 326 is also coupled to power source 310. Controller 326 can manipulate the rail voltage of power source 310. As is well known, by altering the rail voltage of power source 310, the amplitude of the output of inverter 312 is also altered.

Finally, controller 326 is coupled to variable inductor 330 and variable capacitor 332 of tank circuit 314. Controller 326 could be a microcontroller, such as an 8051-type microcontroller. Alternatively, controller 326 could be a microprocessor with additional supporting circuitry.

Controller 326 can modify the inductance of variable inductor 330 or the capacitance of variable capacitor 332. This could be done, e.g., by switching in or out additional capacitor or inductors or by changing the physical characteristics of variable inductor 330 or variable capacitor 332. By modifying the inductance of variable inductor 330 and the capacitance of variable capacitor 332, the resonant frequency of tank circuit 314 can be changed.

By modifying the inductance of variable inductor 330 or the capacitance of variable capacitor 332, or both, tank circuit 314 may have a first resonant frequency and a second resonant frequency. Tank circuit 314 could also have several resonant frequencies. As used herein, the term “resonant frequency” refers to a band of frequencies within which tank circuit 314 will resonate. As is well known, a tank circuit will have a resonant frequency, but will continue to resonate within a range of frequencies.

Variable inductor 330 could be a thyristor controlled variable inductor, a compressible variable inductor, parallel laminated core variable inductor, a series of inductors and switches capable of placing select fixed inductors into tank circuit 314, or any other controllable variable inductor. Variable capacitor 332 could be a switched capacitor array, a

series of fixed capacitors and switches capable of placing select fixed capacitors into tank circuit 314, or any other controllable variable capacitor.

Tank circuit 314 also includes primary winding 334. Primary winding 334 and variable inductor 330 are shown separate. Alternatively, primary winding 334 and variable inductor 330 could be combined into a single element.

Tank circuit 314 is shown as a series resonant tank circuit. A parallel resonant tank circuit could also be used.

FIGs. 5A and 5B show a flow chart showing the operation of adaptive inductive power supply 305 of adaptive contactless energy transmission system shown in FIG. 4.

When turned on (step 400), controller 326 initializes the resonant frequency of tank circuit 314 by setting the inductance of variable inductor 330 and the capacitance variable capacitor 332 so that tank circuit 314 operates at a pre-selected initial resonant frequency. Step 402. Controller 326 initializes drive circuit 328 to operate at a pre-selected frequency with a pre-selected phase offset. Controller 326 initializes power source 310 to operate at a predetermined rail voltage. Step 402.

In order to conserve power, when adaptive inductive power supply 305 is initially energized, adaptive inductive power supply 305 might be initialized to supply power at a very low level. Alternatively, adaptive inductive power supply 305 might be initialized to supply power at a more moderate level to accommodate some common remote devices.

Controller 326 then sets the nominal range for the operating parameters. Step 404. The operating parameters for the power supply are various measures of current and voltage throughout the system. For example, the peak to peak inverter voltage, the RMS current flowing through the primary winding, and the phase offset of the current flowing through the primary

winding are all operating parameters. For example, the operating range could include a range of the phase offset between the inverter voltage and the voltage current, a range for the current amplitude, and a range for the inverter output voltage. As a further example, an operating range could be an inverter voltage from 5 Volts to 5.3 volts, with a current phase offset of no more than 20 degrees, and a current amplitude of between $\frac{1}{2}$ and 1 amp.

The nominal range is the acceptable range of possible values for the operating parameters. If an operating parameter are not within the nominal range, then the power supply is not operating efficiently.

Returning to FIG. 5, the system then idles. Step 406. Controller 326 continually monitors the operating parameters of adaptive inductive power supply 305. If the operating parameters fall within the nominal range, then the circuit continues to idle. Step 408.

When remote device 307 is placed near primary winding 334, then power is drawn from adaptive inductive power supply 305. As a result, the operating parameters change. If the operating parameters fall outside of the nominal range, then controller 326 reconfigures adaptive inductive power supply 305.

If adaptive inductive power supply 305 had an initially low power setting, adaptive inductive power supply 305 would thus sense the presence of the remote device, and automatically increase power to a more moderate level.

Obviously, reconfiguration of adaptive inductive power supply 305 could be triggered by one operating parameter falling outside of the nominal range, or reconfiguration of adaptive inductive power supply 305 could be triggered by a combination of operating parameters falling outside of the nominal range. It is satisfactory to monitor only the phase of

the current flowing through the primary winding. However, various enhancements where other operating parameters are measured and weighted together could be readily conceived.

First, controller 326 causes drive circuit 328 to alter the duty cycle of inverter 312. Step 410. The duty cycle of inverter 312 is altered, and the altered duty cycle is stored in
5 memory 327.

The operating parameters are again measured. Step 412. If the operating parameters are still outside of the nominal range, then a 'best known setting' flag is checked. Step 414. The 'best known setting' flag is discussed below.

If the "best know setting flag" is not set, then controller 326 determines whether
10 the inverter frequency can be adjusted and still maintain resonance within tank circuit 314. Step 418. Controller 326 first finds the maximum and minimum resonant frequency of tank circuit 314.

The maximum and minimum resonant frequency of tank circuit 314 for any particular configuration of variable inductor 330 and variable capacitor 332 could be stored in
15 memory 327. In the alternative, the maximum and minimum resonant frequency of tank circuit 314 could be calculated from the inductance of primary winding 334, the inductance of variable inductor 330, and the capacitance of variable capacitor 332. Controller 326 then compares the maximum and minimum resonant frequency of tank circuit 314 with the current operating frequency of inverter 312.

20 If possible, then controller 326 causes drive circuit 328 to adjust the inverter frequency and stores the new inverter frequency in memory 327. Step 420. The circuit returns to the idle state. Step 406. If the inverter frequency cannot be adjusted within the resonant

frequency of the current configuration of tank circuit 314, then controller 326 determines whether the configuration of tank circuit 314 can be modified. Step 422.

If it can be modified, then controller 326 stores the current frequency, duty cycle, rail voltage, tank circuit configuration, and operating parameters in memory 327. Step 424. It
5 then adjust the tank circuit resonant frequency. Step 426. Adjustment of the tank circuit resonant frequency is accomplished by changing the inductance of variable inductor 330 and the capacitance of variable capacitor 332.

The rail voltage could then be changed. Step 428. Since the resonant frequency of tank circuit 314 has been altered, a new nominal range for the operating parameters is
10 calculated or loaded from memory 327. Step 430. The power supply then returns to idle. Step 406.

If the configuration of tank circuit 314 can not be further modified, then controller 326 searches for the best prior configuration. Step 432. Controller 326 compares the operating parameters previously stored and selects the best configuration.

15 After selecting the best configuration, controller 326 retrieves various settings of adaptive inductive power supply 305 from memory for that configuration. Step 433. Controller 326 then sets the configuration of tank circuit 314 by setting the inductance of adjustable inductor 30 and capacitance of adjustable capacitor 32. Step 434. Controller 326 then sets the frequency of inverter 312. Step 436. Controller 326 then sets the duty cycle of inverter 312.
20 Step 438. Controller 326 sets the rail voltage of power source 310. Step 440.

Controller 326 then stores the expected operating parameters in memory 327. Step 442. Alternatively, controller 326 could set a pointer to the expecting operating parameters in memory 327. Controller 326 then sets the 'best known setting' flag. Step 444. The power

supply then returns to the idle state. Step 406. The 'best known setting' flag is an indication to controller 326 that the current settings being used by adaptive inductive power supply 305 are the best available.

If the 'best known setting' flag is set, then the system is operating at its best settings even though the operating parameters are outside of the nominal range. Further changes to the inverter frequency, resonant circuit frequency, inverter duty cycle or rail voltage thus would not result in any improvement to the system. With the 'best known setting' flag set, the system checks if the operating parameters are approximately equal to the expected operating parameters.

Thus, if the best known setting flag is set (See Step 414), controller 326 checks whether the current operating parameters are approximately the same as the expected operating parameters. Step 446. If so, then further adjustments to power supply will not result in any improved performance, and therefore the system merely returns to the idle state. Step 406.

If, on the other hand, the current operating parameters are not approximately equal to the expected operating parameters, then the best known setting flag is cleared. Step 448. The process of reconfiguring adaptive inductive power supply 305 continues. Step 422.

The adaptive contactless energy transmission system described thus can dynamically handle a variety of different devices. Adaptive inductive power supply 305 automatically adjusts to different devices with different loads, and continually determines and optimal operating configuration for the power supply.

Further, more than a single device can be simultaneously powered by adaptive inductive power supply 305. As new devices are placed near adaptive inductive power supply 305, controller 326 continually adjusts the operating parameters of adaptive inductive power

supply 305 to maintain efficiency. This allows for one single power supply to provide power to a multitude of different devices. The devices need not be located immediately adjacent adaptive inductive power supply 305. That can be spaced at different distances away from adaptive inductive power supply 305. For example, it is possible to construct a power supply whereby
5 sealed lights are stacked near adaptive inductive power supply 305 and each light will be illuminated even though the distance from adaptive inductive power supply 305 is different for each light.

The above description is of the preferred embodiment. Various alterations and changes can be made without departing from the spirit and broader aspects of the invention as
10 defined in the appended claims, which are to be interpreted in accordance with the principles of patent law including the doctrine of equivalents. Any references to claim elements in the singular, for example, using the articles “a,” “an,” “the,” or “said,” is not to be construed as limiting the element to the singular.

CLAIMS

The embodiments of the invention in which an exclusive property or privilege is claimed are defined as follows:

1. A contactless power supply to inductively couple to a device comprising a tank
5 circuit for inductively coupling to the device and a controller for dynamically reconfiguring the tank circuit.
2. The contactless power supply of claim 1 where the tank circuit has a variable capacitor.
3. The contactless power supply of claim 2 where the controller is coupled to the
10 variable capacitor.
4. The contactless power supply of claim 3 where the tank circuit is coupled to an inverter.
5. The contactless power supply of claim 4 where a drive circuit is coupled to the inverter.
- 15 6. The contactless power supply of claim 5 where the inverter has an inverter frequency and the drive circuit regulates the inverter frequency.
7. The contactless power supply of claim 6 where the inverter has a duty cycle and the drive circuit regulates the duty cycle of the inverter.
8. The contactless power supply of claim 7 where a power source is coupled to the
20 inverter.
9. The contactless power supply of claim 8 where the power source has a rail voltage and the rail voltage is alterable by the controller.
10. The contactless power supply of claim 9 where a sensor is coupled to the inverter.

11. The contactless power supply of claim 10 where the inverter has a duty cycle, and the controller, in response to information from the sensor, varies the duty cycle.
12. The contactless power supply of claim 11 where the inverter has an inverter frequency, and the controller, in response to information from the sensor, varies the inverter frequency.
13. The contactless power supply of claim 12 where the controller is coupled to a variable inductor.
14. The contactless power supply of claim 13 where the tank circuit is coupled to an inverter.
15. The contactless power supply of claim 14 where a drive circuit is coupled to the inverter.
16. The contactless power supply of claim 15 where the drive circuit regulates the inverter frequency.
17. The contactless power supply of claim 16 where the drive circuit regulates the duty cycle.
18. The contactless power supply of claim 17 where a power source is coupled to the inverter.
19. The contactless power supply of claim 18 where the power source has a rail voltage and the controller can change the rail voltage.
20. The contactless power supply of claim 19 where a sensor is coupled to the inverter.
21. The contactless power supply of claim 20 where the controller, in response to information from the sensor, varies the duty cycle of the inverter.

22. The contactless power supply of claim 21 further comprising a memory coupled to the controller.
23. The contactless power supply of claim 22 where the tank circuit includes a variable inductor.
- 5 24. The contactless power supply of claim 23 where the tank circuit is coupled to an inverter.
25. The contactless power supply of claim 24 where a drive circuit is coupled to the inverter.
26. The contactless power supply of claim 25 where the inverter has an inverter
10 frequency and the drive circuit regulates the inverter frequency.
27. The contactless power supply of claim 26 where the inverter has a duty cycle, and the drive circuit regulates the duty cycle.
28. The contactless power supply of claim 27 where a power source is coupled to the inverter.
- 15 29. The contactless power supply of claim 28 where the power source has a rail voltage and the controller regulates the rail voltage.
30. The contactless power supply of claim 29 where a sensor is coupled to the inverter.
31. The contactless power supply of claim 30 where the controller, in response to
20 information from the sensor, varies the duty cycle.
32. The contactless power supply of claim 31 where the controller, in response to information from the sensor, varies the inverter frequency.
33. A contactless power supply for inductively powering a device comprising:

a tank circuit;
a sensor for sensing operating parameters of the tank circuit;
and a controller coupled to the sensor for configuring the tank circuit in response
to the sensor.

5 34. The contactless power supply of claim 33 where the tank circuit includes a
variable capacitor.

35. The contactless power supply of claim 34 where the tank circuit includes a
variable inductor.

36. The contactless power supply of claim 35 where the tank circuit includes a
10 primary winding.

37. The contactless power supply of claim 36 where the primary winding and the
variable inductor are separate.

38. The contactless power supply of claim 37 where the primary winding and the
variable inductor are integral.

15 39. A contactless power supply comprising:
a tank circuit, the tank circuit having a resonant frequency and a variable element
for changing the resonant frequency, the tank circuit being attachable to a source of AC power;
a sensor for detecting a power transfer efficiency from the tank circuit; and
a controller responsive to the sensor for changing the variable element if the
20 power transfer efficiency is reduced.

40. A method of operating a contactless power supply to power a load, the contactless
power supply having a tank circuit, the tank circuit having a resonant frequency, the tank circuit

also having an operating parameter, the tank circuit being inductively coupled to the load, comprising changing the resonant frequency in response to changes of the operating parameter.

41. The method of claim 40 where the tank circuit is coupled to an AC power source, the AC power source having an AC power source frequency, further comprising:

5 changing the AC power source frequency in response to changes of the operating parameter.

42. The method of claim 41 where the AC power source is an inverter, and the inverter has a duty cycle, further comprising changing the duty cycle in response to changes of the operating parameter.

10 43. The method of claim 42 where the inverter is coupled to a DC power source, the DC power source having a rail voltage, further comprising:

changing the rail voltage in response to changes of the operating parameter.

44. The method of claim 43 where the tank circuit has an adjustable capacitor, the adjustable capacitor having a capacitance, and adjusting the resonant frequency of the tank
15 circuit comprises the step of changing the capacitance of the adjustable capacitor.

45. The method of claim 44 where the tank circuit has an adjustable inductor, the adjustable inductor having an inductance, and adjusting the resonant frequency of the tank circuit comprises the step of changing the inductance of the adjustable inductor.

46. The method of claim 45 where the tank circuit has an adjustable inductor, the
20 adjustable inductor having an inductance, and adjusting the resonant frequency of the tank circuit comprises changing the inductance of the adjustable inductor.

47. The method of claim 46 where the tank circuit has an adjustable capacitor, the adjustable capacitor having a capacitance, and adjusting the resonant frequency of the tank circuit comprises the step of changing the capacitance of the adjustable capacitor.

48. The method of claim 44 or 47 where the inverter is coupled to a DC power source, the DC power source having a rail voltage, comprising the step of changing the rail voltage in response to the operating parameter.

49. The method of claim 48 where tank circuit has a tank circuit current, the tank circuit current has a phase, and the operating parameter is the phase..

50. A method of operating a power supply for a load, the power supply having a tank circuit inductively coupled to the load, the tank circuit having an adjustable resonant frequency, the power supply having an inverter, the inverter having a duty cycle and an inverter frequency, the inverter coupled to a DC power source, the DC power source having a rail voltage, the power supply having a sensor for detecting an operating parameter of the tank circuit, the operational parameter having a nominal range, comprising the steps of :

monitoring the operating parameter; and
if the operating parameter goes outside of the nominal range, changing the duty cycle to a second duty cycle value.

51. The method of claim 50 further comprising the step of:
if the operating parameter remains outside of the nominal range, changing the adjustable resonant frequency.

52. A method of operating a power supply to power a load, the power supply having a tank circuit, the tank circuit configurable to have a first resonant frequency and the tank circuit configurable to have a second resonant frequency, the tank circuit also having an operating

parameter, the operating parameter having a nominal range, the tank circuit being inductively coupled to the load, comprising:

configuring the tank circuit to have the first resonant frequency if the operating parameter is within the nominal range; and

5 configuring the tank circuit to have the second resonant frequency if the operating parameter is not within the nominal range.

53. The method of claim 52 where the power supply has an inverter supplying power to the tank circuit, the inverter having a first inverter frequency and a second inverter frequency, comprising the steps of:

10 operating the inverter at about the first inverter frequency if the operating parameter is within the nominal range; and

operating the inverter at about the second inverter frequency if the operating parameter is not within the nominal range.

54. The method of claim 53 where the power supply has a memory including the
15 steps of:

storing the operating parameter in the memory as a first operating value when the tank circuit is configured to operate at the first resonant frequency; and

storing the operating parameter in the memory as a second operating value when the tank circuit is configured to operate at the second resonant frequency.

20 55. The method of claim 54 including the step of:

if the operating parameter is not within the nominal range when the inverter is operating at the first inverter frequency or the second inverter frequency:

determining whether the first operating value or the second operating value is preferable; and

configuring the power supply to operate so as to produce either the first operating value or the second operating value.

5 56. The method of claim 55 further comprising the step of:

if the first operating value is preferable, storing the first operating value in the memory as an expected operating value; and

if the second operating value is preferable, storing the second operating value in the memory as the expected operating value.

ABSTRACT OF THE DISCLOSURE

A contactless power supply has a dynamically configurable tank circuit powered by an inverter. The contactless power supply is inductively coupled to one or more loads. The inverter is connected to a DC power source. When loads are added or removed from the system, the contactless power supply is capable of modifying the resonant frequency of the tank circuit, the inverter frequency, the inverter duty cycle or the rail voltage of the DC power source.

911352-5

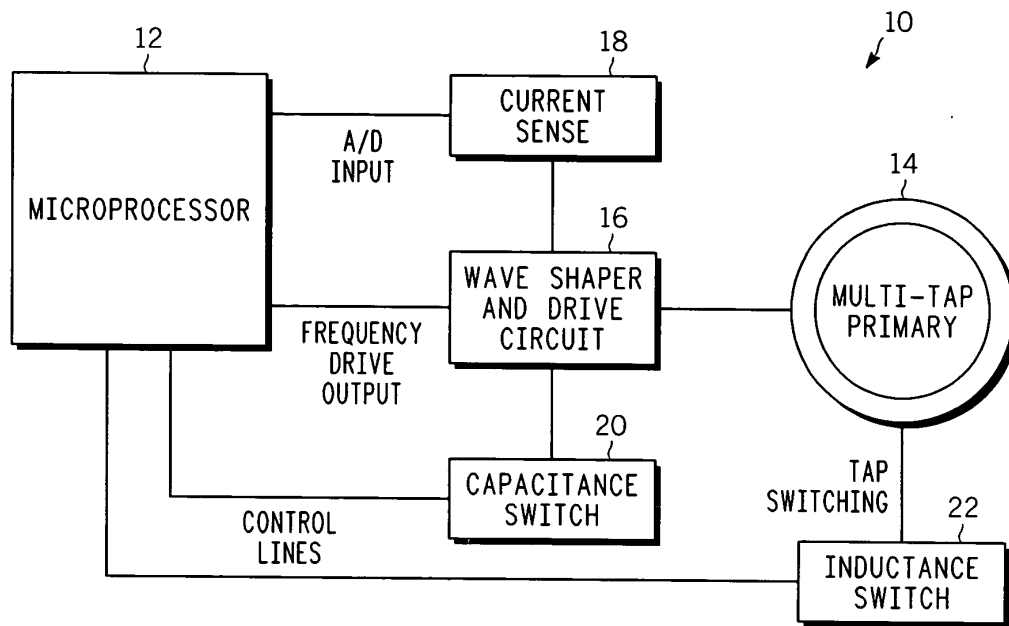
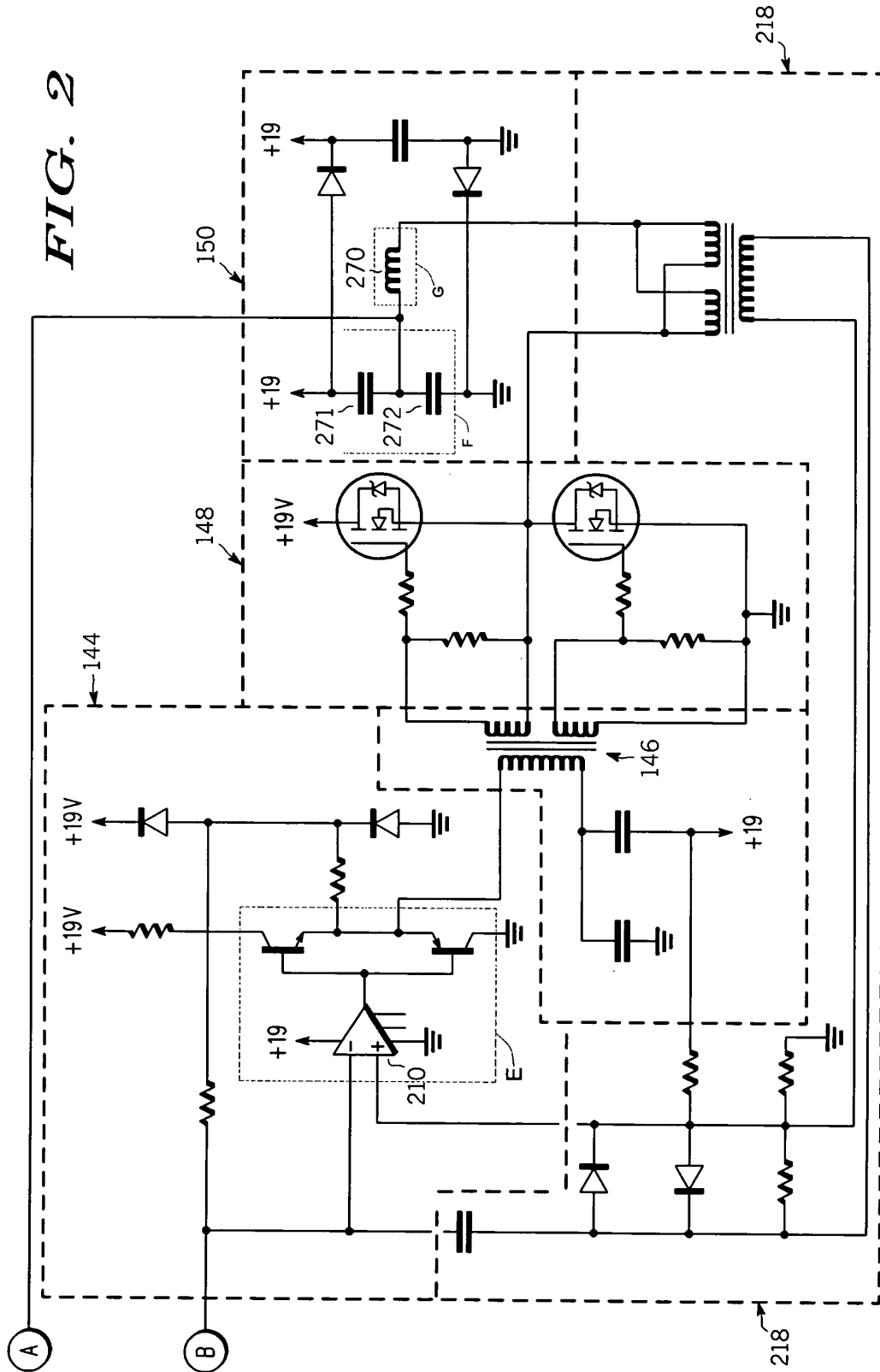


FIG. 1

FIG. 2



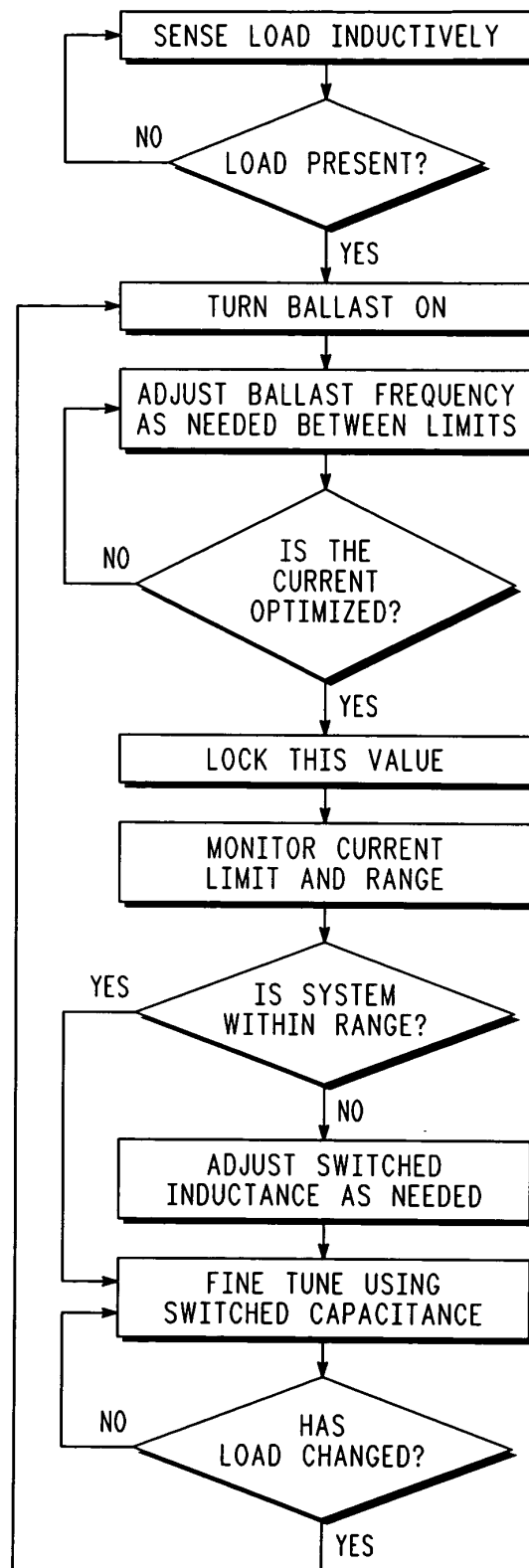
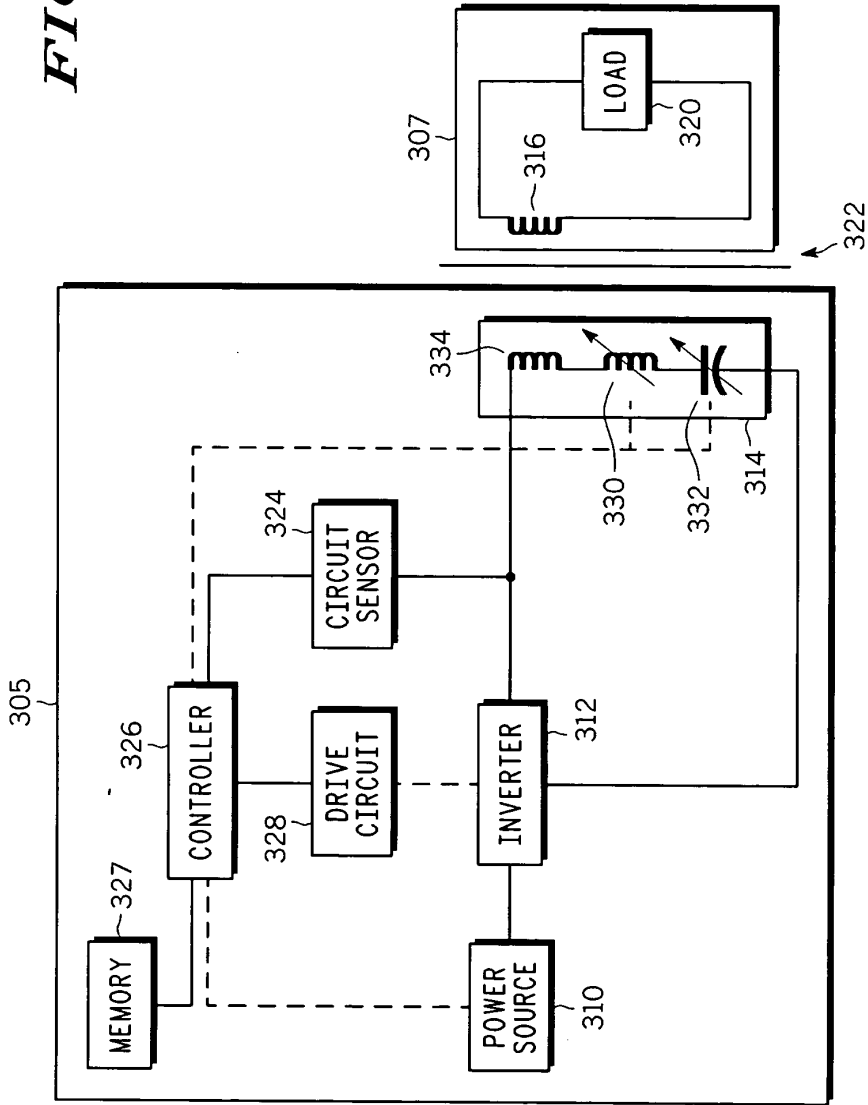
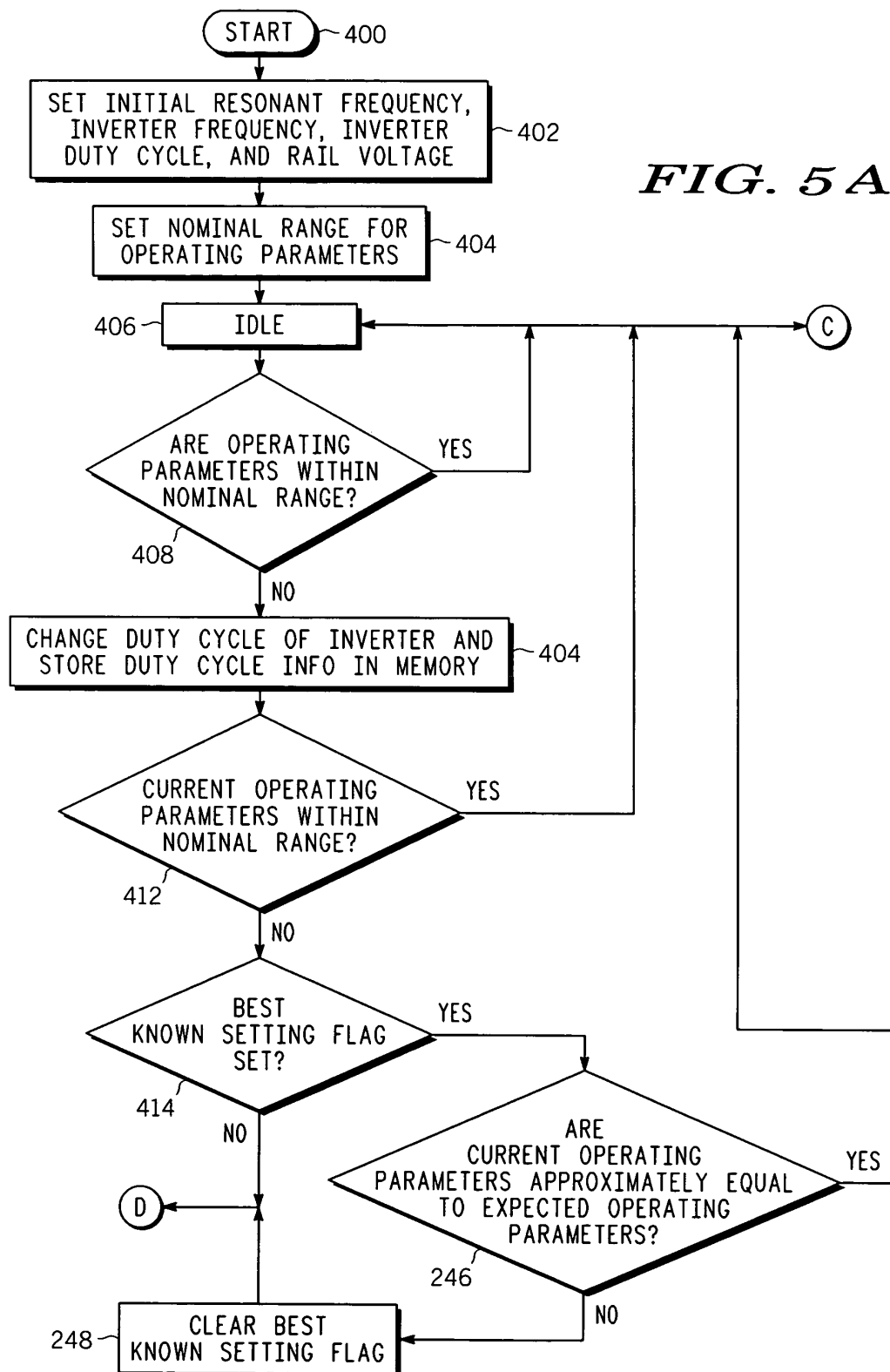


FIG.
3

FIG. 4





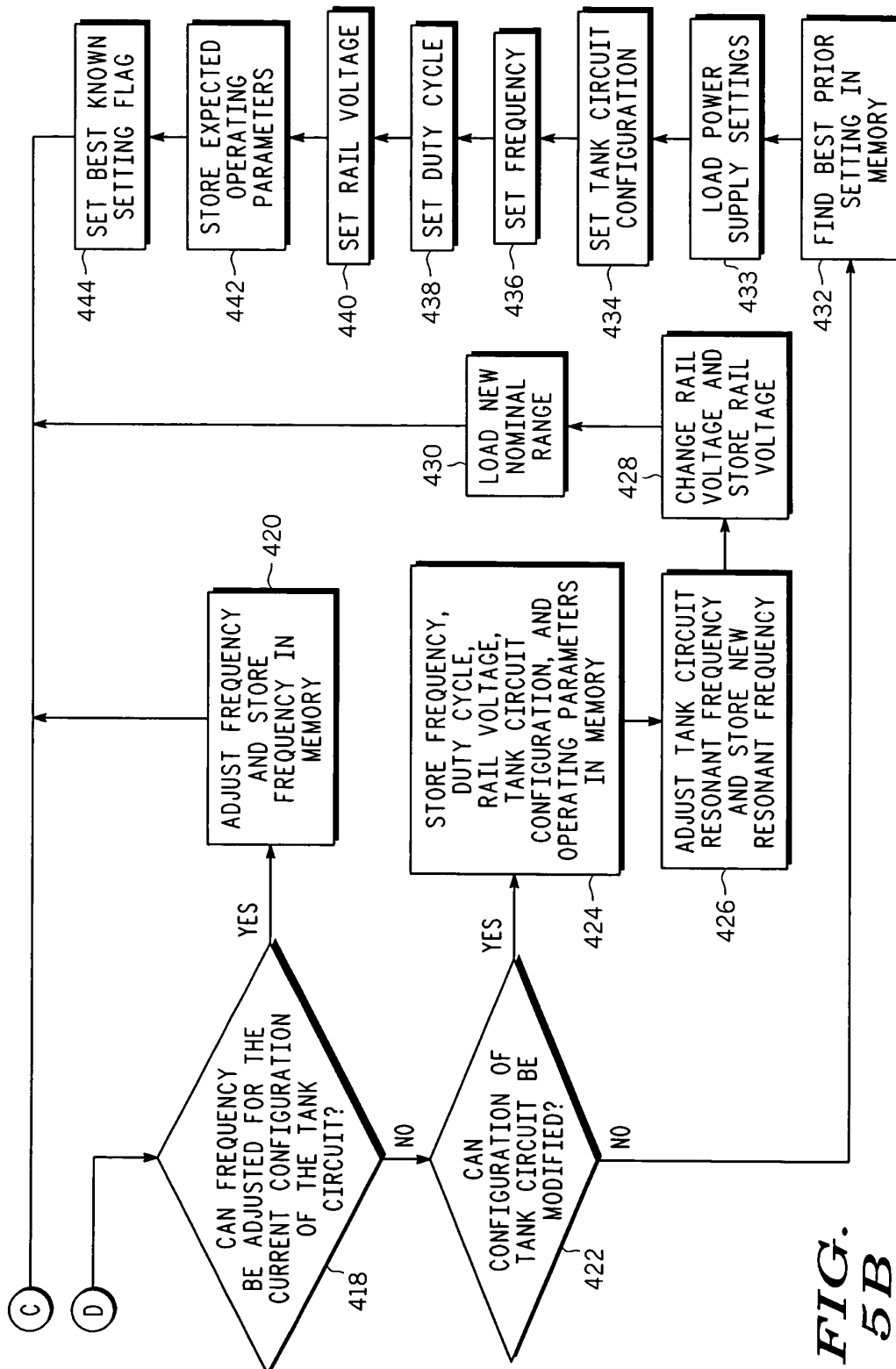


FIG.
5B

DECLARATION**Express Mail
EV 195836200 US**

As a below named inventor, I declare that:

My residence, post office address, and citizenship are as stated below next to my name.

I believe I am the original, first, and sole inventor (if only one name is listed below) or an original, first, and joint inventor (if plural names are listed below) of the subject matter which is claimed and for which a patent is sought on the invention entitled ADAPTIVE INDUCTIVE POWER SUPPLY, the specification of which:

 X is attached hereto. was filed on as Application Serial No. . was filed on as PCT International Application No. . was amended on .

I have reviewed and understand the contents of the above-identified specification, including the claims, as amended by any amendment referred to above.

I acknowledge the duty to disclose information which is material to patentability as defined in Title 37, Code of Federal Regulations, Sec. 1.56, including for continuation-in-part applications, material information which became available between the filing date of the prior application and the national or PCT international filing date of the continuation-in-part application.

I claim foreign priority benefits under Title 35, United States Code, Sec. 119 of any foreign application(s) for patent or inventor's certificate listed below and have also identified below any foreign application for patent or inventor's certificate having a filing date before that of the application on which priority is claimed:

Priority Claimed

<u>None</u>			<u>Yes</u>	<u>No</u>
(Number)	(Country)	(Month/day/year filed)		

I claim the benefit under Title 35, United States Code, Sec. 120 of any United States application(s) listed below and, insofar as the subject matter of each of the claims of this application is not disclosed in the prior United States application in the manner provided by the first paragraph of Title 35, United States Code, Sec. 112, I acknowledge the duty to disclose material information as defined in Title 37, Code of Federal Regulations, Sec. 1.56 which became available between the filing date of the prior application and the national or PCT international filing date of this application:

10/175,095	June 18, 2002	pending
09/592,194	June 12, 2000	patented (now U.S. Patent 6,436,299)
(Application Serial No.)	(Filing Date)	(Status) (patented, pending, abandoned)

I claim the benefit under Title 35, United States Code, Sec. 119(e) of any United States Provisional application(s) listed below:

60/140,090	June 21, 1999
60/140,159	June 21, 1999
60/444,794	February 4, 2003
(Application Serial No.)	(Filing Date)

All statements made herein of my own knowledge are true and all statements made on information and belief are believed to be true; and these statements were made with the knowledge that willful false statements and the like so made are punishable by fine or imprisonment, or both, under Section 1001 of Title 18 of the United States Code and that such willful false statements may jeopardize the validity of the application or any patent issued thereon.

Inventor's Signature	Date
<u>David W. Baarman</u>	
Full name of sole or first joint inventor	
<u>United States of America</u>	
Citizenship	
<u>Fennville, Michigan</u>	
Residence (City & State)	
<u>6414 127th Avenue, Fennville, MI 49408</u>	
Post Office Address	

Inventor's Signature	Date
Full name of second joint inventor, if any	
Citizenship	
Residence (City & State)	
Post Office Address	

Additional inventor(s) identified on attached sheet Yes X No
WN3091
921735-2