

**EXHIBIT E – Infringement Claim Chart for U.S. Patent No. 11,878,729**

The infringement claim chart below is meant to illustrate how the Accused Products (as identified in the cover document) include each and every limitation of claims 1-5, 15-17, 19-20, and 22 of U.S. Patent No. 11,878,729 (the “’729 Patent”). Each and every limitation of these claims of the ’729 Patent are literally present in the Accused Products. Baby Jogger does, however, reserve the right to contend that any claim limitation of the ’729 Patent found to be not literally present in the Accused Products is present under the doctrine of equivalents because each of the components of the Accused Products performs substantially the same function in substantially the same way to achieve substantially the same result as the limitations of the asserted claims of the ’729 Patent, and any alleged difference is insubstantial. Baby Jogger reserves the right to supplement and/or amend these claim charts or to assert new theories of infringement in light of the Court’s claim construction, based on any non-infringement positions asserted, and/or based on any discovery.

The infringement claim chart below cites representative examples of documents, videos, and visual representations to demonstrate how the Accused Products contain each and every limitation of claims 1-5, 15-17, 19-20, and 22 of the ’729 Patent. Baby Jogger reserves the right to rely on additional information to support its allegations of infringement, including, but not limited to, materials yet to be produced by UPPAbaby. Baby Jogger further notes that several of the images below have been annotated.

Baby Jogger reserves the right to rely on the entirety of the materials cited in this chart to demonstrate infringement of the Accused Products. Citations presented for one claim limitation are expressly incorporated by reference into all other limitations for that claim as well as all limitations of the claim(s) on which that claim depends.

U.S. Patent No. 11,878,729	
<p><b>[1pre]</b> A stroller system for supporting a front stroller seat and a rear stroller seat, the system comprising:</p>	<p>Regardless of whether the preamble of claim 1 is considered a limitation, which Baby Jogger does not concede, the Accused Products are stroller systems for supporting a front stroller seat and a rear stroller seat. For example, the images below show a stroller system supporting a front stroller seat and a rear stroller seat.</p>  <p><a href="https://uppababy.com/accessories/strollers-accessories/vista-lower-adapter/">https://uppababy.com/accessories/strollers-accessories/vista-lower-adapter/</a></p>  <p><a href="https://uppababy.com/accessories/strollers-accessories/rumbleseat-v2-plus/jake/">https://uppababy.com/accessories/strollers-accessories/rumbleseat-v2-plus/jake/</a></p>

[1a] a pair of rear wheels;

The Accused Products comprise a pair of rear wheels. For example, the images below show a pair of rear wheels.



<https://uppababy.com/accessories/strollers-accessories/vista-lower-adapter/>



<https://uppababy.com/accessories/strollers-accessories/rumbleseat-v2-plus/jake/>

[1b] a pair of front wheels;

The Accused Products comprise a pair of front wheels. For example, the images below show a pair of front wheels.



<https://uppababy.com/accessories/strollers-accessories/vista-lower-adapter/>



<https://uppababy.com/accessories/strollers-accessories/rumbleseat-v2-plus/jake/>

[1c] a frame including a handle portion, a rear wheel support portion, a front wheel support portion, and

The Accused Products comprise a frame including a handle portion, a rear wheel support portion, and a front wheel support portion. For example, the images below show a handle portion, a rear wheel support portion, and a front wheel support portion.



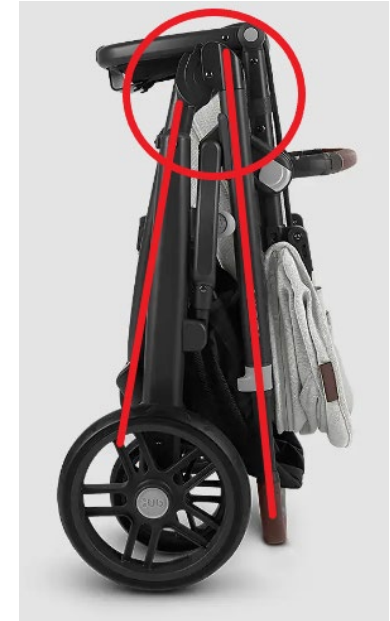
<https://uppababy.com/accessories/strollers-accessories/vista-lower-adapter/>



<https://uppababy.com/accessories/strollers-accessories/rumbleseat-v2-plus/jake/>

[1d] a folding mechanism connecting the front wheel support portion and the handle portion in both an unfolded configuration and in a folded configuration,

The Accused Products comprise a folding mechanism connecting the front wheel support portion and the handle portion in both an unfolded configuration and in a folded configuration. For example, the images below show the folding mechanism that connects the front wheel support portion and the handle portion when in an unfolded configuration and in a folded configuration.



<https://uppababy.com/accessories/strollers-accessories/vista-lower-adapter/>

The following videos further illustrate the Accused Products' folding mechanism and show the folding mechanism connecting the front wheel support portion and the handle portion in both an unfolded configuration and in a folded configuration.

- UPPAbaby Vista V2 – Fold + Unfold ([https://www.youtube.com/watch?v=Vqv\\_IMezvil](https://www.youtube.com/watch?v=Vqv_IMezvil)) (last accessed December 17, 2024);
- UPPAbaby Vista V3 – Fold + Unfold (<https://www.youtube.com/watch?v=uhDXZKw9rg8>) (last accessed December 17, 2024);
- UPPAbaby Vista Stroller – Fold + Store (<https://www.youtube.com/watch?v=oaWvMrTDNvc>) (last accessed December 17, 2024).

[1e] wherein the frame includes a stroller seat support portion positioned at a first vertical position adjacent the handle portion, and

The Accused Products include a frame with a stroller seat support portion positioned at a first vertical position adjacent the handle portion. For example, the images below show a frame with a stroller seat support portion that is positioned at a first vertical position and is adjacent to the handle portion.



<https://uppababy.com/accessories/strollers-accessories/vista-lower-adapter/>



<https://uppababy.com/accessories/strollers-accessories/rumbleseat-v2-plus/jake/>

[1f] wherein the front wheel support portion and the handle portion are parallel when the frame is in the unfolded configuration; and

The Accused Products comprise a frame in which the front wheel support portion and the handle portion are parallel when the frame is in the unfolded configuration. For example, the images below show the front wheel support portion and the handle portion parallel to each other when the frame is in the unfolded configuration.



<https://uppababy.com/accessories/strollers-accessories/vista-lower-adapter/>



<https://uppababy.com/accessories/strollers-accessories/rumbleseat-v2-plus/jake/>

[1g] a front seat attachment configured for attachment to the front wheel support portion at a second vertical position substantially lower than the first vertical position,

The Accused Products comprise a front seat attachment configured for attachment to the front wheel support portion at a second vertical position substantially lower than the first vertical position. For example, the images below show a front seat attachment that is attached to the front wheel support portion at a second vertical position that is substantially lower than the first vertical position.



<https://uppababy.com/accessories/strollers-accessories/vista-lower-adapter/>



<https://uppababy.com/accessories/strollers-accessories/rumbleseat-v2-plus/jake/>

[1h] wherein the front seat attachment is configured to releasably connect to and support the front stroller seat in either a forward-facing configuration or a backward-facing configuration,

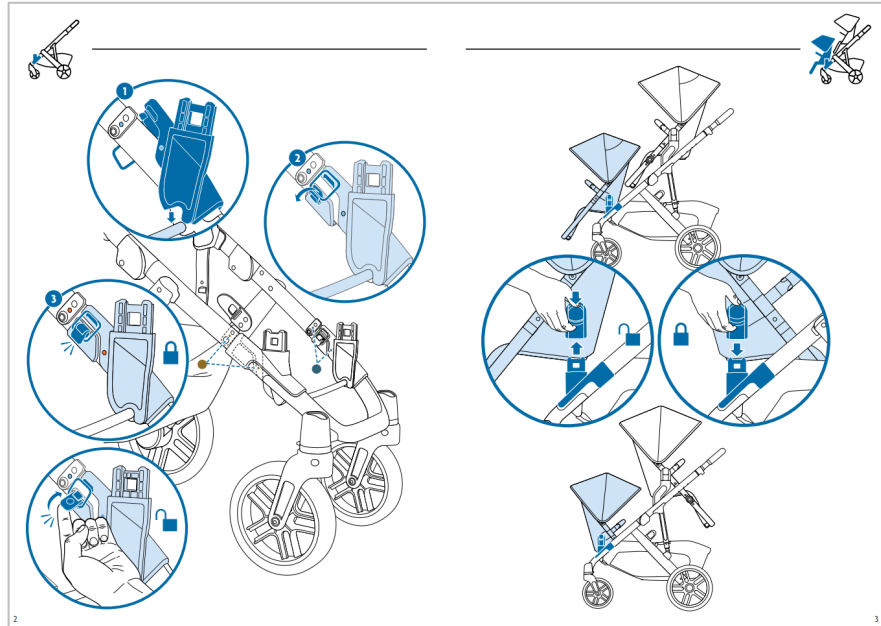
The Accused Products comprise a front seat attachment that is configured to releasably connect to and support the front stroller seat in either a forward-facing configuration or a backward-facing configuration. For example, the images below a front seat attachment that is configured to support the front stroller seat in both the forward-facing and back-ward facing configurations.



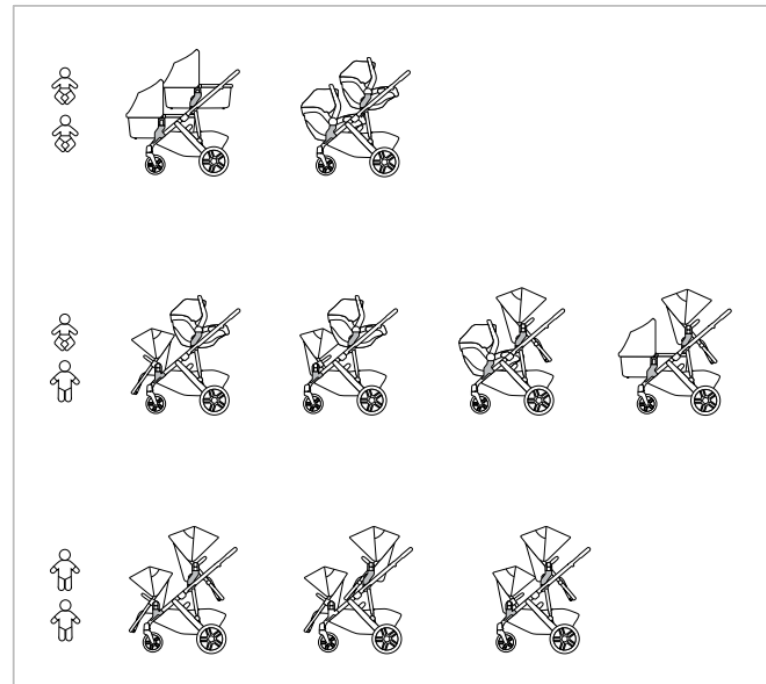
<https://uppababy.com/accessories/strollers-accessories/vista-lower-adapter/>



<https://uppababy.com/accessories/strollers-accessories/rumbleseat-v2-plus/jake/>




UPPAbaby RumbleSeat V2 Manual, at 2-3 ([https://uppababy.com/wp-content/uploads/2023/12/0920-RBS\\_RumbleSeatV2Manual\\_010523.pdf](https://uppababy.com/wp-content/uploads/2023/12/0920-RBS_RumbleSeatV2Manual_010523.pdf))



UPPAbaby Vista V2 Manual, at 45 ([https://uppababy.com/wp-content/uploads/2023/09/VistaV2\\_Manual\\_230831.pdf](https://uppababy.com/wp-content/uploads/2023/09/VistaV2_Manual_230831.pdf)); see also UPPAbaby Vista V3 Manual, at 23 ([https://uppababy.com/wp-content/uploads/2024/09/0303-VSO\\_VistaV3ProductManual\\_2400819.pdf](https://uppababy.com/wp-content/uploads/2024/09/0303-VSO_VistaV3ProductManual_2400819.pdf))

The following videos further illustrate the Accused Products' front seat attachment that is configured to support the front stroller seat in both the forward-facing and backward-facing configurations:

- UPPAbaby Vista V3 – How-To Use in Double Mode (North America) ([https://www.youtube.com/watch?v=DpGleTd\\_7LI&list=PPSV](https://www.youtube.com/watch?v=DpGleTd_7LI&list=PPSV)) (last accessed December 17, 2024);
- UPPAbaby Vista Stroller – Attaching the RumbleSeat Adapters ([https://www.youtube.com/watch?v=QGSuC9d9k\\_Q&list=PPSV](https://www.youtube.com/watch?v=QGSuC9d9k_Q&list=PPSV)) (last accessed December 17, 2024);
- UPPAbaby Vista V2 Stroller (<https://www.youtube.com/watch?v=05j7t7hqWY4&list=PPSV>) (last accessed December 17, 2024);
- UPPAbaby Vista Stroller – Attaching the RumbleSeat Adapters + Lower Adapters (<https://www.youtube.com/watch?v=Tf5laA1JQKA&list=PPSV>) (last accessed December 17, 2024);

	<ul style="list-style-type: none"><li>• UPPAbaby Vista Stroller – Infant + Toddler (<a href="https://www.youtube.com/watch?v=g7I7b09f1os">https://www.youtube.com/watch?v=g7I7b09f1os</a>) (last accessed December 17, 2024);</li><li>• UPPAbaby Vista Stroller – Twin Mode (<a href="https://www.youtube.com/watch?v=VX8Ut21jVEQ">https://www.youtube.com/watch?v=VX8Ut21jVEQ</a>) (last accessed December 17, 2024);</li><li>• UPPAbaby Vista Stroller – Multiple Mode (<a href="https://www.youtube.com/watch?v=c9HVuqMDvuo">https://www.youtube.com/watch?v=c9HVuqMDvuo</a>) (last accessed December 17, 2024);</li><li>• UPPAbaby Vista Stroller – Toddler + Toddler (<a href="https://www.youtube.com/watch?v=laDOKpoCY6k">https://www.youtube.com/watch?v=laDOKpoCY6k</a>) (last accessed December 17, 2024).</li></ul>
<p>[1i] wherein the front seat attachment is configured to support the front stroller seat substantially over the front wheels so that a center of gravity of the stroller system is between the front wheels and the rear wheels;</p>	<p>The Accused Products comprise a front seat attachment that is configured to support the front stroller seat substantially over the front wheels so that a center of gravity of the stroller system is between the front wheels and the rear wheels. For example, the images below show the front seat attachment supporting the front stroller seat substantially over the front wheels. In this configuration, the center of gravity, or the average location of all the weight of the stroller system, is between the front wheels and the rear wheels.</p>  <p><a href="https://uppababy.com/accessories/strollers-accessories/rumbleseat-v2-plus/jake/">https://uppababy.com/accessories/strollers-accessories/rumbleseat-v2-plus/jake/</a></p>

[1j] wherein the rear wheel support portion extends diagonally relative to the front wheel support portion when the frame is in the unfolded configuration, and

The Accused Products comprise a rear wheel support portion that extends diagonally relative to the front wheel support portion when the frame is in the unfolded configuration. For example, the images below show the rear wheel support portion extending diagonally relative to the front wheel support portion when the frame is in the unfolded configuration.



<https://uppababy.com/accessories/strollers-accessories/vista-lower-adapter/>



<https://uppababy.com/accessories/strollers-accessories/rumbleseat-v2-plus/jake/>

[1k] the rear wheel support portion is disposed adjacent to both the front wheel support portion and the handle portion when the frame is in the folded configuration; and

The Accused Products comprise rear wheel support portion that is disposed adjacent to both the front wheel support portion and the handle portion when the frame is in the folded configuration. For example, the image below shows the rear wheel support portion adjacent to both the front wheel support portion and the handle portion when the frame is in the folded configuration.



<https://uppababy.com/accessories/strollers-accessories/vista-lower-adapter/>

The following videos further illustrate that the rear wheel support portion is disposed adjacent to both the front wheel support portion and the handle portion when the frame is in the folded configuration.

- UPPAbaby Vista V2 – Fold + Unfold ([https://www.youtube.com/watch?v=Vqv\\_IMezvil](https://www.youtube.com/watch?v=Vqv_IMezvil)) (last accessed December 17, 2024);
- UPPAbaby Vista V3 – Fold + Unfold (<https://www.youtube.com/watch?v=uhDXZKw9rg8>) (last accessed December 17, 2024);
- UPPAbaby Vista Stroller – Fold + Store (<https://www.youtube.com/watch?v=oaWvMrTDNvc>) (last accessed December 17, 2024).

[11] wherein the stroller seat support portion positioned at the first vertical position and the front seat attachment at the second vertical position create an inline descending configuration of the rear stroller seat and the front stroller seat.

The Accused Products comprise a stroller seat support portion positioned at the first vertical position and a front seat attachment at the second vertical position which creates an inline descending configuration of the rear stroller seat and the front stroller seat. For example, the images below show the stroller seat support portion positioned at the first vertical position and the front seat attachment at the second vertical position, together creating an inline descending configuration of the rear stroller seat and the front stroller seat.



<https://uppababy.com/accessories/strollers-accessories/vista-lower-adapter/>



<https://uppababy.com/accessories/strollers-accessories/rumbleseat-v2-plus/jake/>

[2] The stroller system of claim 1, wherein the folding mechanism includes at least one pivot point.

The Accused Products are stroller systems in which the folding mechanism includes at least one pivot point. For example, the images below show at least one pivot point of the folding mechanism.



<https://uppababy.com/accessories/strollers-accessories/vista-lower-adapter/>

The following videos further illustrate the Accused Products' folding mechanism and show the folding mechanism having at least one pivot point.

- UPPAbaby Vista V2 – Fold + Unfold ([https://www.youtube.com/watch?v=Vqv\\_IMezvil](https://www.youtube.com/watch?v=Vqv_IMezvil)) (last accessed December 17, 2024);
- UPPAbaby Vista V3 – Fold + Unfold (<https://www.youtube.com/watch?v=uhDXZKw9rg8>) (last accessed December 17, 2024);
- UPPAbaby Vista Stroller – Fold + Store (<https://www.youtube.com/watch?v=oaWvMrTDNvc>) (last accessed December 17, 2024).

[3] The stroller system of claim 1, wherein the stroller seat support portion is configured to support the rear stroller seat substantially over the rear wheels.


The Accused Products are stroller systems in which the stroller seat support portion is configured to support the rear stroller seat substantially over the rear wheels. For example, the images below show the stroller seat support portion configured to support the rear stroller seat substantially over the rear wheels.



<https://uppababy.com/accessories/strollers-accessories/vista-lower-adapter/>

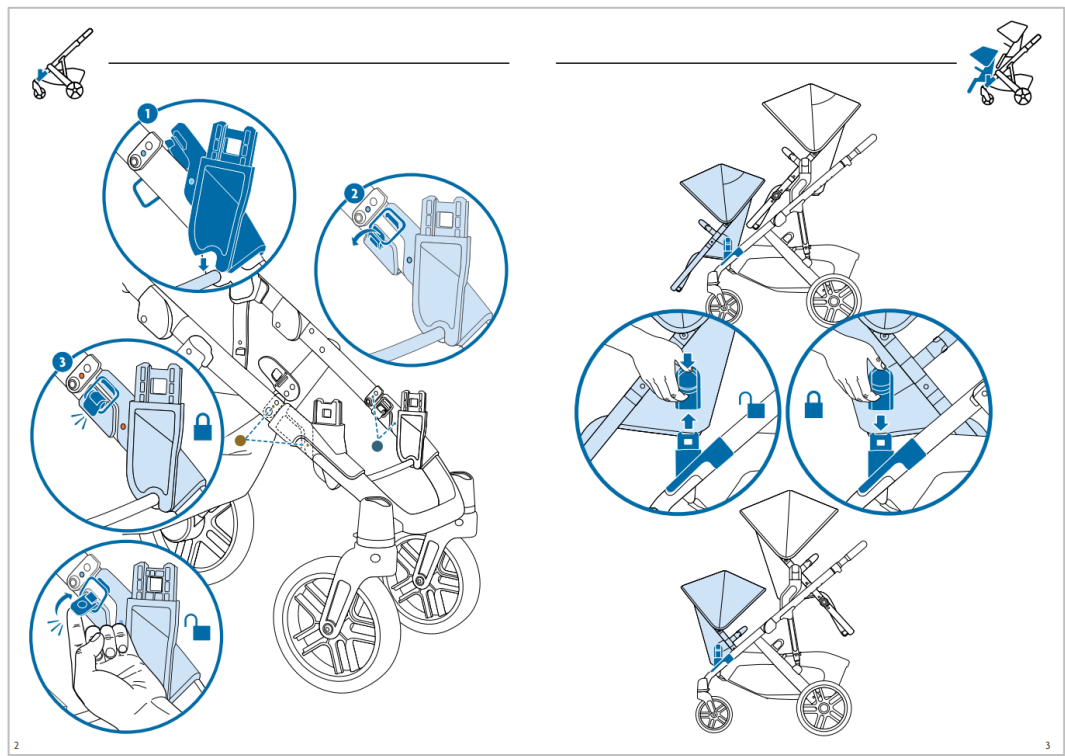


<https://uppababy.com/accessories/strollers-accessories/rumbleseat-v2-plus/jake/>

<p><b>[4a]</b> The stroller system of claim 1, wherein the front seat attachment includes a first connector portion and a second connector portion,</p>	<p>The Accused Products are stroller systems in which the front seat attachment includes a first connector portion and a second connector portion. For example, the images below show the front seat attachment having a first and second connector portion.</p>  <p><a href="https://uppababy.com/accessories/strollers-accessories/vista-lower-adapter/">https://uppababy.com/accessories/strollers-accessories/vista-lower-adapter/</a></p>
<p><b>[4b]</b> the first connector portion configured to removably attach to a left side of the front wheel support portion, and</p>	<p>The Accused Products are stroller systems in which the front seat attachment includes a first connector portion that is configured to removably attach to the left side of the front wheel support portion. For example, the images below show the first connector portion configured to removably attach to the left side of the front wheel support portion.</p>




<https://uppababy.com/accessories/strollers-accessories/vista-lower-adapter/>

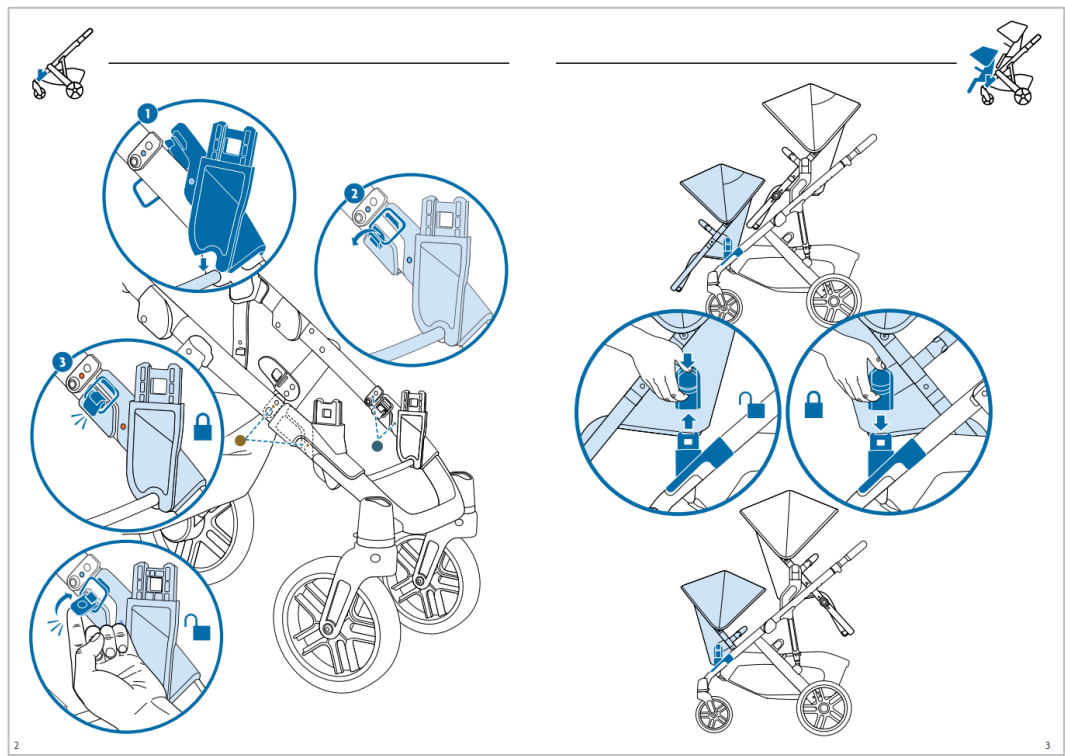


UPPAbaby RumbleSeat V2 Manual, at 2-3 ([https://uppababy.com/wp-content/uploads/2023/12/0920-RBS\\_RumbleSeatV2Manual\\_010523.pdf](https://uppababy.com/wp-content/uploads/2023/12/0920-RBS_RumbleSeatV2Manual_010523.pdf))

The following videos further illustrate the Accused Products' front seat attachment that has a first connector portion that is configured to removably attach to the left side of the front wheel support portion:

- UPPAbaby Vista V3 – How-To Use in Double Mode (North America) ([https://www.youtube.com/watch?v=DpGleTd\\_7LI&list=PPSV](https://www.youtube.com/watch?v=DpGleTd_7LI&list=PPSV)) (last accessed December 17, 2024);
- UPPAbaby Vista Stroller – Attaching the RumbleSeat Adapters ([https://www.youtube.com/watch?v=QGSuC9d9k\\_Q&list=PPSV](https://www.youtube.com/watch?v=QGSuC9d9k_Q&list=PPSV)) (last accessed December 17, 2024);
- UPPAbaby Vista V2 Stroller (<https://www.youtube.com/watch?v=05j7t7hqWY4&list=PPSV>) (last accessed December 17, 2024);
- UPPAbaby Vista Stroller – Attaching the RumbleSeat Adapters + Lower Adapters (<https://www.youtube.com/watch?v=Tf5laA1JOKA&list=PPSV>) (last accessed December 17, 2024);


	<ul style="list-style-type: none"><li>• UPPAbaby Vista Stroller – Infant + Toddler (<a href="https://www.youtube.com/watch?v=g7I7b09f1os">https://www.youtube.com/watch?v=g7I7b09f1os</a>) (last accessed December 17, 2024);</li><li>• UPPAbaby Vista Stroller – Twin Mode (<a href="https://www.youtube.com/watch?v=VX8Ut21jVEQ">https://www.youtube.com/watch?v=VX8Ut21jVEQ</a>) (last accessed December 17, 2024);</li><li>• UPPAbaby Vista Stroller – Multiple Mode (<a href="https://www.youtube.com/watch?v=c9HVuqMDvuo">https://www.youtube.com/watch?v=c9HVuqMDvuo</a>) (last accessed December 17, 2024);</li><li>• UPPAbaby Vista Stroller – Toddler + Toddler (<a href="https://www.youtube.com/watch?v=laDOKpoCY6k">https://www.youtube.com/watch?v=laDOKpoCY6k</a>) (last accessed December 17, 2024).</li></ul>
<p><b>[4c]</b> the second connector portion configured to removably attach to a right side of the front wheel support portion.</p>	<p>The Accused Products are stroller systems in which the front seat attachment includes a second connector portion that is configured to removably attach to the right side of the front wheel support portion. For example, the images below show the second connector portion configured to removably attach to the right side of the front wheel support portion.</p>  <p><a href="https://uppababy.com/accessories/strollers-accessories/vista-lower-adapter/">https://uppababy.com/accessories/strollers-accessories/vista-lower-adapter/</a></p>



UPPAbaby RumbleSeat V2 Manual, at 2-3 ([https://uppababy.com/wp-content/uploads/2023/12/0920-RBS\\_RumbleSeatV2Manual\\_010523.pdf](https://uppababy.com/wp-content/uploads/2023/12/0920-RBS_RumbleSeatV2Manual_010523.pdf))

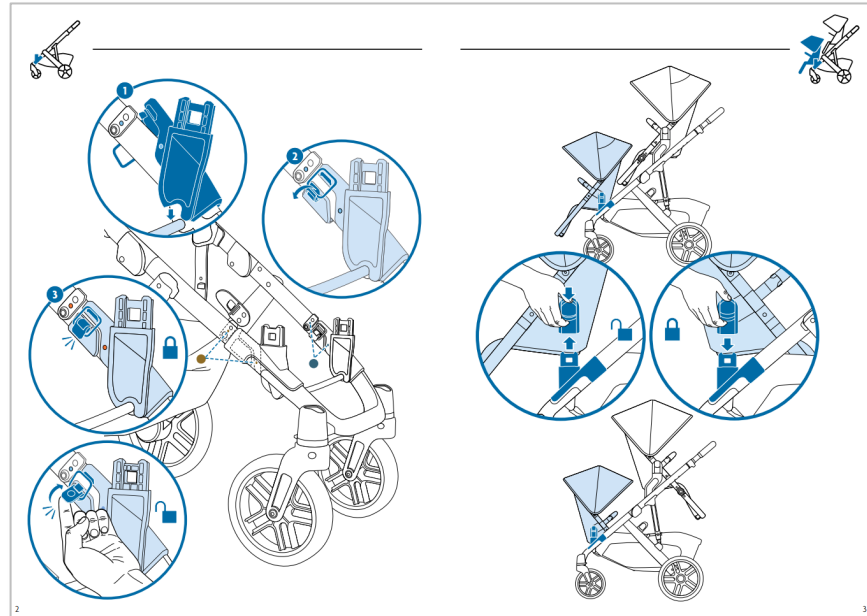
The following videos further illustrate the Accused Products' front seat attachment that has a second connector portion that is configured to removably attach to the right side of the front wheel support portion:

- UPPAbaby Vista V3 – How-To Use in Double Mode (North America) ([https://www.youtube.com/watch?v=DpGleTd\\_7LI&list=PPSV](https://www.youtube.com/watch?v=DpGleTd_7LI&list=PPSV)) (last accessed December 17, 2024);
- UPPAbaby Vista Stroller – Attaching the RumbleSeat Adapters ([https://www.youtube.com/watch?v=QGSuC9d9k\\_Q&list=PPSV](https://www.youtube.com/watch?v=QGSuC9d9k_Q&list=PPSV)) (last accessed December 17, 2024);
- UPPAbaby Vista V2 Stroller (<https://www.youtube.com/watch?v=05j7t7hqWY4&list=PPSV>) (last accessed December 17, 2024);
- UPPAbaby Vista Stroller – Attaching the RumbleSeat Adapters + Lower Adapters (<https://www.youtube.com/watch?v=Tf5laA1JOKA&list=PPSV>) (last accessed December 17, 2024);

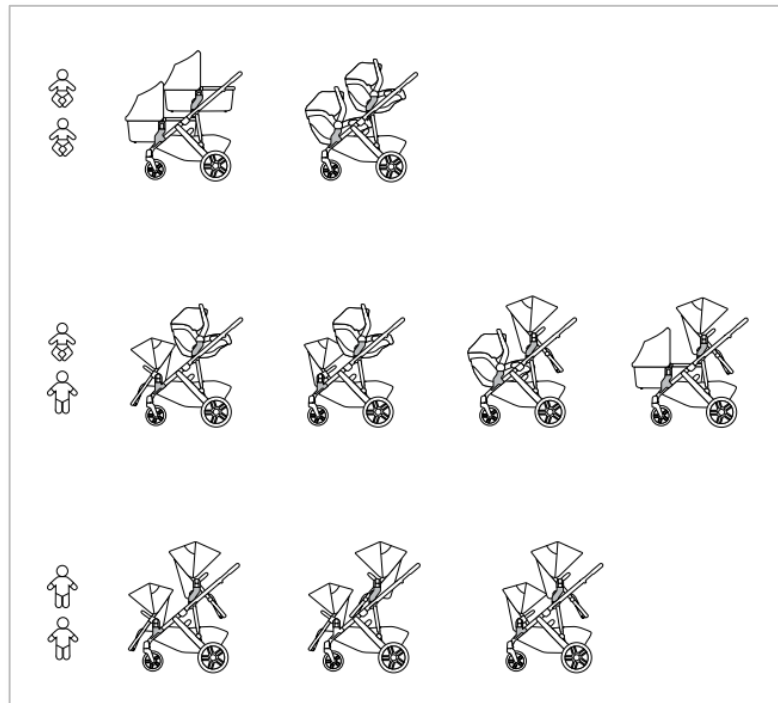
	<ul style="list-style-type: none"><li>• UPPAbaby Vista Stroller – Infant + Toddler (<a href="https://www.youtube.com/watch?v=g7I7b09f1os">https://www.youtube.com/watch?v=g7I7b09f1os</a>) (last accessed December 17, 2024);</li><li>• UPPAbaby Vista Stroller – Twin Mode (<a href="https://www.youtube.com/watch?v=VX8Ut21jVEQ">https://www.youtube.com/watch?v=VX8Ut21jVEQ</a>) (last accessed December 17, 2024);</li><li>• UPPAbaby Vista Stroller – Multiple Mode (<a href="https://www.youtube.com/watch?v=c9HVuqMDvuo">https://www.youtube.com/watch?v=c9HVuqMDvuo</a>) (last accessed December 17, 2024);</li><li>• UPPAbaby Vista Stroller – Toddler + Toddler (<a href="https://www.youtube.com/watch?v=laDOKpoCY6k">https://www.youtube.com/watch?v=laDOKpoCY6k</a>) (last accessed December 17, 2024).</li></ul>
<p>[5] The stroller system of claim 4, wherein the front seat attachment includes a pair of seat attachment elements configured to releasably support the front stroller seat in either the forward-facing configuration or in the backward-facing configuration.</p>	<p>The Accused Products are stroller systems in which the front seat attachment includes a pair of seat attachment elements configured to releasably support the front stroller seat in either the forward-facing configuration or in the backward-facing configuration. For example, the images below show the front seat attachment having a pair of seat attachment elements that releasably support the front stroller seat in either the forward-facing configuration or in the backward-facing configuration.</p>  <p><a href="https://uppababy.com/accessories/strollers-accessories/vista-lower-adapter/">https://uppababy.com/accessories/strollers-accessories/vista-lower-adapter/</a></p>



<https://uppababy.com/accessories/strollers-accessories/rumbleseat-v2-plus/jake/>




UPPAbaby RumbleSeat V2 Manual, at 2-3 ([https://uppababy.com/wp-content/uploads/2023/12/0920-RBS\\_RumbleSeatV2Manual\\_010523.pdf](https://uppababy.com/wp-content/uploads/2023/12/0920-RBS_RumbleSeatV2Manual_010523.pdf))



UPPAbaby Vista V2 Manual, at 45 ([https://uppababy.com/wp-content/uploads/2023/09/VistaV2\\_Manual\\_230831.pdf](https://uppababy.com/wp-content/uploads/2023/09/VistaV2_Manual_230831.pdf)); see also UPPAbaby Vista V3 Manual, at 23 ([https://uppababy.com/wp-content/uploads/2024/09/0303-VSO\\_VistaV3ProductManual\\_2400819.pdf](https://uppababy.com/wp-content/uploads/2024/09/0303-VSO_VistaV3ProductManual_2400819.pdf))

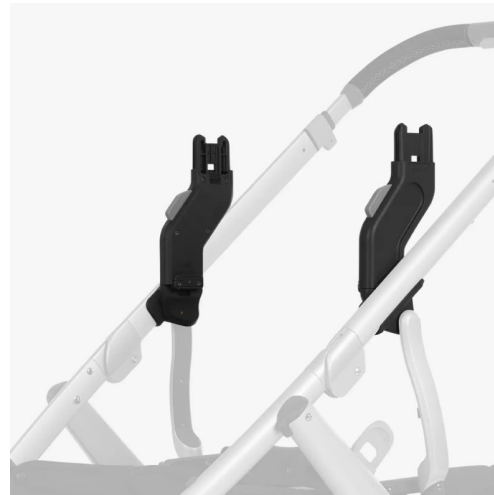
The following videos further illustrate the Accused Products' front seat attachment that is configured to support the front stroller seat in both the forward-facing and back-ward facing configurations:

- UPPAbaby Vista V3 – How-To Use in Double Mode (North America) ([https://www.youtube.com/watch?v=DpGleTd\\_7LI&list=PPSV](https://www.youtube.com/watch?v=DpGleTd_7LI&list=PPSV)) (last accessed December 17, 2024);
- UPPAbaby Vista Stroller – Attaching the RumbleSeat Adapters ([https://www.youtube.com/watch?v=QGSuC9d9k\\_Q&list=PPSV](https://www.youtube.com/watch?v=QGSuC9d9k_Q&list=PPSV)) (last accessed December 17, 2024);
- UPPAbaby Vista V2 Stroller (<https://www.youtube.com/watch?v=05j7t7hqWY4&list=PPSV>) (last accessed December 17, 2024);
- UPPAbaby Vista Stroller – Attaching the RumbleSeat Adapters + Lower Adapters (<https://www.youtube.com/watch?v=Tf5laA1JQKA&list=PPSV>) (last accessed December 17, 2024);

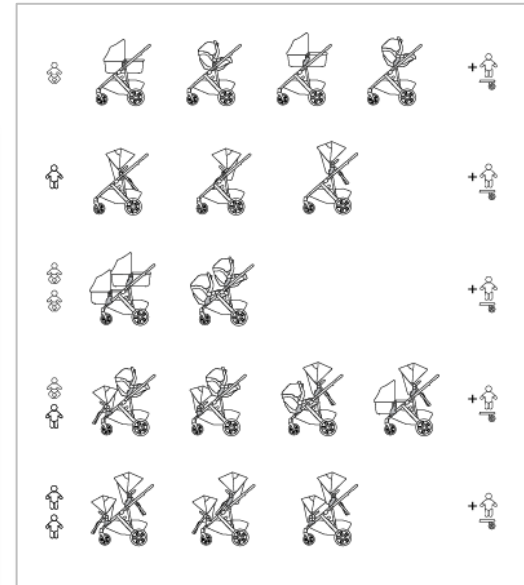
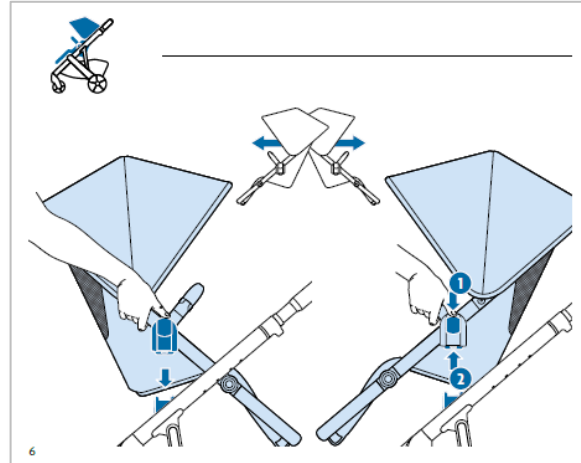
	<ul style="list-style-type: none"><li>• UPPAbaby Vista Stroller – Infant + Toddler (<a href="https://www.youtube.com/watch?v=g7I7b09f1os">https://www.youtube.com/watch?v=g7I7b09f1os</a>) (last accessed December 17, 2024);</li><li>• UPPAbaby Vista Stroller – Twin Mode (<a href="https://www.youtube.com/watch?v=VX8Ut21jVEQ">https://www.youtube.com/watch?v=VX8Ut21jVEQ</a>) (last accessed December 17, 2024);</li><li>• UPPAbaby Vista Stroller – Multiple Mode (<a href="https://www.youtube.com/watch?v=c9HVuqMDvuo">https://www.youtube.com/watch?v=c9HVuqMDvuo</a>) (last accessed December 17, 2024);</li><li>• UPPAbaby Vista Stroller – Toddler + Toddler (<a href="https://www.youtube.com/watch?v=laDOKpoCY6k">https://www.youtube.com/watch?v=laDOKpoCY6k</a>) (last accessed December 17, 2024).</li></ul>
<p>[15] The stroller system of claim 1, wherein the stroller seat support portion is configured to releasably support the rear stroller seat.</p>	<p>The Accused Products are stroller systems in which the stroller seat support portion is configured to releasably support the rear stroller seat. For example, the images below show the stroller seat support portion configured to releasably support the rear stroller seat.</p>  <p><a href="https://uppababy.com/accessories/strollers-accessories/vista-lower-adapter/">https://uppababy.com/accessories/strollers-accessories/vista-lower-adapter/</a></p>



<https://uppababy.com/accessories/strollers-accessories/rumbleseat-v2-plus/jake/>




<https://uppababy.com/accessories/strollers-accessories/vista-upper-adapter/>

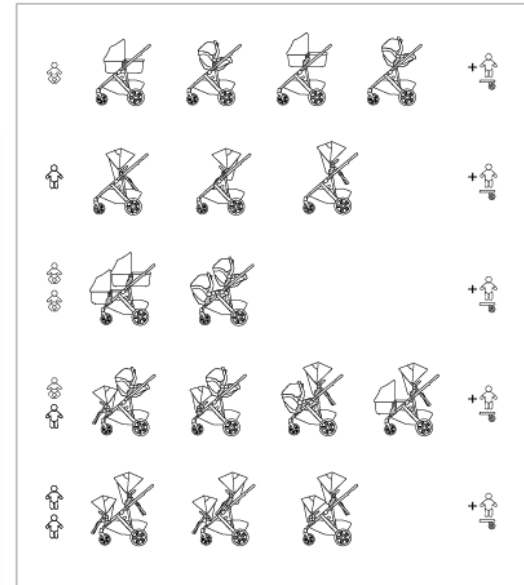
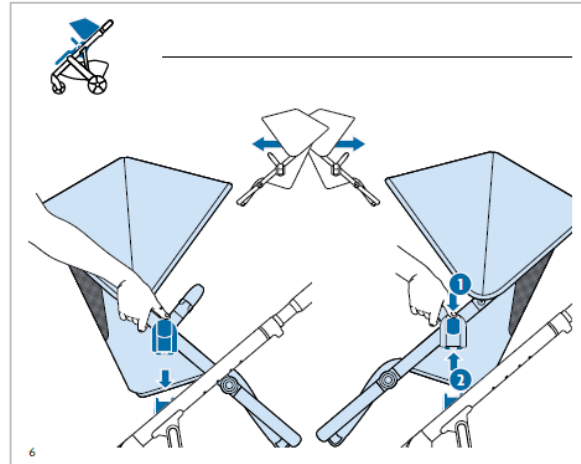


UPPAbaby Vista V3 Manual, at 6, 22-23 ([https://uppababy.com/wp-content/uploads/2024/09/0303-VSO\\_VistaV3ProductManual\\_2400819.pdf](https://uppababy.com/wp-content/uploads/2024/09/0303-VSO_VistaV3ProductManual_2400819.pdf)); see also UPPAbaby Vista V2 Manual, at 26, 28, 44-45 ([https://uppababy.com/wp-content/uploads/2023/09/VistaV2\\_Manual\\_230831.pdf](https://uppababy.com/wp-content/uploads/2023/09/VistaV2_Manual_230831.pdf))

The following videos further illustrate the Accused Products' stroller seat support portions configured to releasably support the rear stroller seat:

- UPPAbaby Vista V3 – How-To Use in Double Mode (North America) ([https://www.youtube.com/watch?v=DpGleTd\\_7LI&list=PPSV](https://www.youtube.com/watch?v=DpGleTd_7LI&list=PPSV)) (last accessed December 17, 2024);
- UPPAbaby Vista Stroller – Attaching the RumbleSeat Adapters ([https://www.youtube.com/watch?v=QGSuC9d9k\\_Q&list=PPSV](https://www.youtube.com/watch?v=QGSuC9d9k_Q&list=PPSV)) (last accessed December 17, 2024);
- UPPAbaby Vista V2 Stroller (<https://www.youtube.com/watch?v=05j7t7hqWY4&list=PPSV>) (last accessed December 17, 2024);
- UPPAbaby Vista Stroller – Attaching the RumbleSeat Adapters + Lower Adapters (<https://www.youtube.com/watch?v=Tf5laA1JQKA&list=PPSV>) (last accessed December 17, 2024);
- UPPAbaby Vista Stroller – Infant + Toddler (<https://www.youtube.com/watch?v=g717b09f1os>) (last accessed December 17, 2024);
- UPPAbaby Vista Stroller – Twin Mode (<https://www.youtube.com/watch?v=VX8Ut21jVEQ>) (last accessed December 17, 2024);


	<ul style="list-style-type: none"><li>• UPPAbaby Vista Stroller – Multiple Mode (<a href="https://www.youtube.com/watch?v=c9HVuqMDvuo">https://www.youtube.com/watch?v=c9HVuqMDvuo</a>) (last accessed December 17, 2024);</li><li>• UPPAbaby Vista Stroller – Toddler + Toddler (<a href="https://www.youtube.com/watch?v=laDOKpoCY6k">https://www.youtube.com/watch?v=laDOKpoCY6k</a>) (last accessed December 17, 2024).</li></ul>
<p>[16] The stroller system of claim 1, wherein the stroller seat support portion is configured to support the rear stroller seat in either a forward-facing configuration or a backward-facing configuration.</p>	<p>The Accused Products are stroller systems in which the stroller seat support portion is configured to support the rear stroller seat in either a forward-facing configuration or a backward-facing configuration. For example, the images below show the stroller seat support portion configured to support the rear stroller seat in both a forward-facing configuration and a backward-facing configuration.</p>  <p><a href="https://uppababy.com/accessories/strollers-accessories/rumbleseat-v2-plus/jake/">https://uppababy.com/accessories/strollers-accessories/rumbleseat-v2-plus/jake/</a></p>



UPPAbaby Vista V3 Manual, at 6, 22-23 ([https://uppababy.com/wp-content/uploads/2024/09/0303-VSO\\_VistaV3ProductManual\\_2400819.pdf](https://uppababy.com/wp-content/uploads/2024/09/0303-VSO_VistaV3ProductManual_2400819.pdf)); see also UPPAbaby Vista V2 Manual, at 26, 28, 44-45 ([https://uppababy.com/wp-content/uploads/2023/09/VistaV2\\_Manual\\_230831.pdf](https://uppababy.com/wp-content/uploads/2023/09/VistaV2_Manual_230831.pdf))

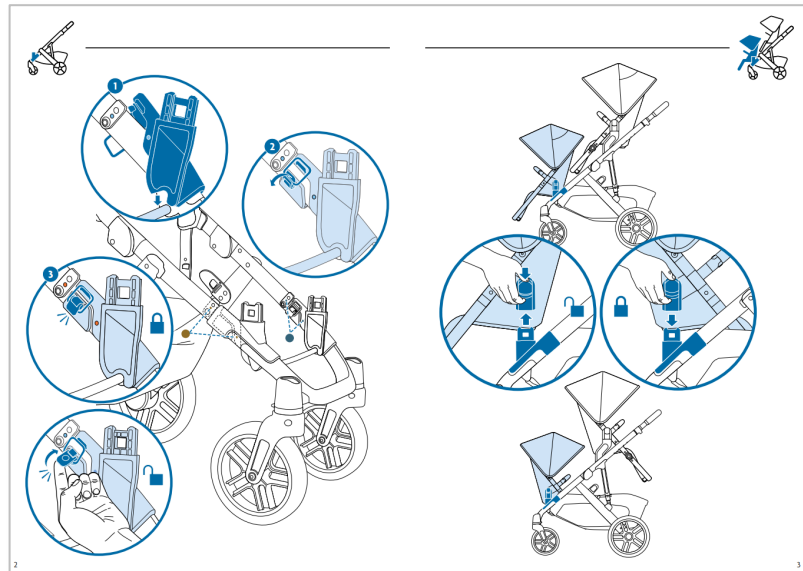
The following videos further illustrate the Accused Products' stroller seat support portions configured to support the rear stroller seat in both a forward-facing configuration and a backward-facing configuration:

- UPPAbaby Vista V3 – How-To Use in Double Mode (North America) ([https://www.youtube.com/watch?v=DpGleTd\\_7LI&list=PPSV](https://www.youtube.com/watch?v=DpGleTd_7LI&list=PPSV)) (last accessed December 17, 2024);
- UPPAbaby Vista Stroller – Attaching the RumbleSeat Adapters ([https://www.youtube.com/watch?v=QGSuC9d9k\\_Q&list=PPSV](https://www.youtube.com/watch?v=QGSuC9d9k_Q&list=PPSV)) (last accessed December 17, 2024);
- UPPAbaby Vista V2 Stroller (<https://www.youtube.com/watch?v=05j7t7hqWY4&list=PPSV>) (last accessed December 17, 2024);
- UPPAbaby Vista Stroller – Attaching the RumbleSeat Adapters + Lower Adapters (<https://www.youtube.com/watch?v=Tf5laA1JQKA&list=PPSV>) (last accessed December 17, 2024);
- UPPAbaby Vista Stroller – Infant + Toddler (<https://www.youtube.com/watch?v=g717b09f1os>) (last accessed December 17, 2024);
- UPPAbaby Vista Stroller – Twin Mode (<https://www.youtube.com/watch?v=VX8Ut21jVEQ>) (last accessed December 17, 2024);

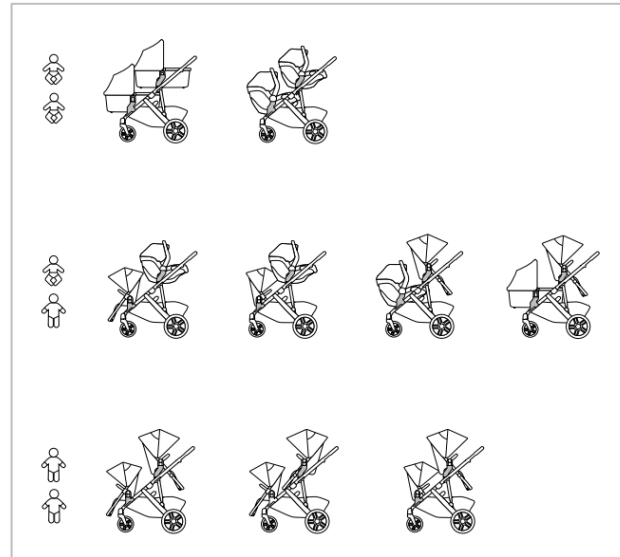
	<ul style="list-style-type: none"><li>• UPPAbaby Vista Stroller – Multiple Mode (<a href="https://www.youtube.com/watch?v=c9HVuqMDvuo">https://www.youtube.com/watch?v=c9HVuqMDvuo</a>) (last accessed December 17, 2024);</li><li>• UPPAbaby Vista Stroller – Toddler + Toddler (<a href="https://www.youtube.com/watch?v=laDOKpoCY6k">https://www.youtube.com/watch?v=laDOKpoCY6k</a>) (last accessed December 17, 2024).</li></ul>
<p>[17] The stroller system of claim 1, wherein the front seat attachment is further configured to connect to one or more sides of the front stroller seat.</p>	<p>The Accused Products are stroller systems in which the front seat attachment is configured to connect to one or more sides of the front stroller seat. For example, the images below show the front seat attachment configured to connect to either side of the front stroller seat.</p>  <p><a href="https://uppababy.com/accessories/strollers-accessories/vista-lower-adapter/">https://uppababy.com/accessories/strollers-accessories/vista-lower-adapter/</a></p>



<https://uppababy.com/accessories/strollers-accessories/rumbleseat-v2-plus/jake/>





UPPAbaby RumbleSeat V2 Manual, at 2-3 ([https://uppababy.com/wp-content/uploads/2023/12/0920-RBS\\_RumbleSeatV2Manual\\_010523.pdf](https://uppababy.com/wp-content/uploads/2023/12/0920-RBS_RumbleSeatV2Manual_010523.pdf))



UPPAbaby Vista V2 Manual, at 45 ([https://uppababy.com/wp-content/uploads/2023/09/VistaV2\\_Manual\\_230831.pdf](https://uppababy.com/wp-content/uploads/2023/09/VistaV2_Manual_230831.pdf)); see also UPPAbaby Vista V3 Manual, at 23 ([https://uppababy.com/wp-content/uploads/2024/09/0303-VSO\\_VistaV3ProductManual\\_2400819.pdf](https://uppababy.com/wp-content/uploads/2024/09/0303-VSO_VistaV3ProductManual_2400819.pdf))

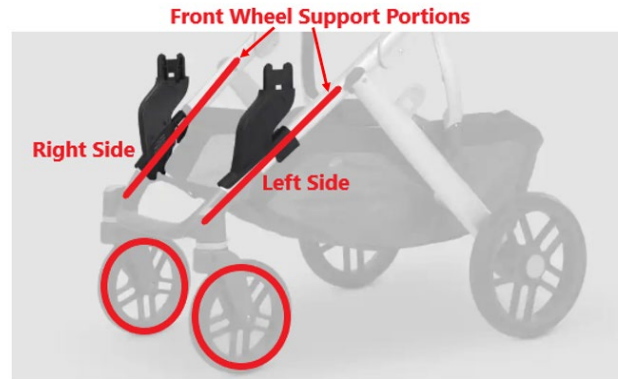
The following videos further illustrate the Accused Products' front seat attachment configured to connect to either side of the front stroller seat:

- UPPAbaby Vista V3 – How-To Use in Double Mode (North America) ([https://www.youtube.com/watch?v=DpGleTd\\_7LI&list=PPSV](https://www.youtube.com/watch?v=DpGleTd_7LI&list=PPSV)) (last accessed December 17, 2024);
- UPPAbaby Vista Stroller – Attaching the RumbleSeat Adapters ([https://www.youtube.com/watch?v=QGSuC9d9k\\_Q&list=PPSV](https://www.youtube.com/watch?v=QGSuC9d9k_Q&list=PPSV)) (last accessed December 17, 2024);
- UPPAbaby Vista V2 Stroller (<https://www.youtube.com/watch?v=05j7t7hqWY4&list=PPSV>) (last accessed December 17, 2024);
- UPPAbaby Vista Stroller – Attaching the RumbleSeat Adapters + Lower Adapters (<https://www.youtube.com/watch?v=Tf5laA1JQKA&list=PPSV>) (last accessed December 17, 2024);
- UPPAbaby Vista Stroller – Infant + Toddler (<https://www.youtube.com/watch?v=g7I7b09f1os>) (last accessed December 17, 2024);
- UPPAbaby Vista Stroller – Twin Mode (<https://www.youtube.com/watch?v=VX8Ut21jVEQ>) (last accessed December 17, 2024);

	<ul style="list-style-type: none"><li>• UPPAbaby Vista Stroller – Multiple Mode (<a href="https://www.youtube.com/watch?v=c9HVuqMDvuo">https://www.youtube.com/watch?v=c9HVuqMDvuo</a>) (last accessed December 17, 2024);</li><li>• UPPAbaby Vista Stroller – Toddler + Toddler (<a href="https://www.youtube.com/watch?v=laDOKpoCY6k">https://www.youtube.com/watch?v=laDOKpoCY6k</a>) (last accessed December 17, 2024).</li></ul>
<p>[19] The stroller system of claim 1, wherein the pair of front wheels includes only two front wheels.</p>	<p>The Accused Products comprise a pair of front wheels that include only two front wheels. For example, the images below show the Accused Products having two front wheels.</p>  <p><a href="https://uppababy.com/accessories/strollers-accessories/vista-lower-adapter/">https://uppababy.com/accessories/strollers-accessories/vista-lower-adapter/</a></p>  <p><a href="https://uppababy.com/accessories/strollers-accessories/rumbleseat-v2-plus/jake/">https://uppababy.com/accessories/strollers-accessories/rumbleseat-v2-plus/jake/</a></p>

[20] The stroller system of claim 19, wherein the only two front wheels are laterally spaced apart from each other on a left side and a right side of the front wheel support portion.

The Accused Products comprise only two front wheels that are laterally spaced apart from each other on a left side and a right side of the front wheel support portion. For example, the images below show the Accused Products with only two front wheels that are laterally spaced apart from each other on a left and right side of the front wheel support portion.



<https://uppababy.com/accessories/strollers-accessories/vista-lower-adapter/>



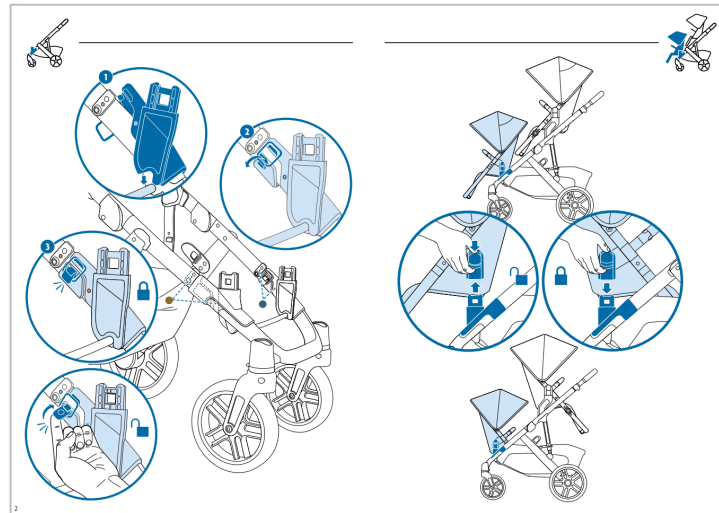
<https://uppababy.com/accessories/strollers-accessories/rumbleseat-v2-plus/jake/>

[22] The stroller system of claim 1, wherein the front seat attachment is configured to releasably attach to the front wheel support portion.

The Accused Products comprise a front seat attachment that is configured to releasably attach to the front wheel support portion. For example, the images below show the front seat attachment configured to releasably attach to the front wheel support portion.



<https://uppababy.com/accessories/strollers-accessories/vista-lower-adapter/>



UPPAbaby RumbleSeat V2 Manual, at 2-3 ([https://uppababy.com/wp-content/uploads/2023/12/0920-RBS\\_RumbleSeatV2Manual\\_010523.pdf](https://uppababy.com/wp-content/uploads/2023/12/0920-RBS_RumbleSeatV2Manual_010523.pdf))

	<p>The following videos further illustrate the Accused Products' front seat attachment that is configured to releasably attach to the front wheel support portion:</p> <ul style="list-style-type: none"><li>• UPPAbaby Vista V3 – How-To Use in Double Mode (North America) (<a href="https://www.youtube.com/watch?v=DpGleTd_7LI&amp;list=PPSV">https://www.youtube.com/watch?v=DpGleTd_7LI&amp;list=PPSV</a>) (last accessed December 17, 2024);</li><li>• UPPAbaby Vista Stroller – Attaching the RumbleSeat Adapters (<a href="https://www.youtube.com/watch?v=QGSuC9d9k_Q&amp;list=PPSV">https://www.youtube.com/watch?v=QGSuC9d9k_Q&amp;list=PPSV</a>) (last accessed December 17, 2024);</li><li>• UPPAbaby Vista V2 Stroller (<a href="https://www.youtube.com/watch?v=05j7t7hqWY4&amp;list=PPSV">https://www.youtube.com/watch?v=05j7t7hqWY4&amp;list=PPSV</a>) (last accessed December 17, 2024);</li><li>• UPPAbaby Vista Stroller – Attaching the RumbleSeat Adapters + Lower Adapters (<a href="https://www.youtube.com/watch?v=Tf5laA1JQKA&amp;list=PPSV">https://www.youtube.com/watch?v=Tf5laA1JQKA&amp;list=PPSV</a>) (last accessed December 17, 2024);</li><li>• UPPAbaby Vista Stroller – Infant + Toddler (<a href="https://www.youtube.com/watch?v=g7I7b09f1os">https://www.youtube.com/watch?v=g7I7b09f1os</a>) (last accessed December 17, 2024);</li><li>• UPPAbaby Vista Stroller – Twin Mode (<a href="https://www.youtube.com/watch?v=VX8Ut21jVEQ">https://www.youtube.com/watch?v=VX8Ut21jVEQ</a>) (last accessed December 17, 2024);</li><li>• UPPAbaby Vista Stroller – Multiple Mode (<a href="https://www.youtube.com/watch?v=c9HVuqMDvuo">https://www.youtube.com/watch?v=c9HVuqMDvuo</a>) (last accessed December 17, 2024);</li><li>• UPPAbaby Vista Stroller – Toddler + Toddler (<a href="https://www.youtube.com/watch?v=laDOKpoCY6k">https://www.youtube.com/watch?v=laDOKpoCY6k</a>) (last accessed December 17, 2024).</li></ul>
--	---