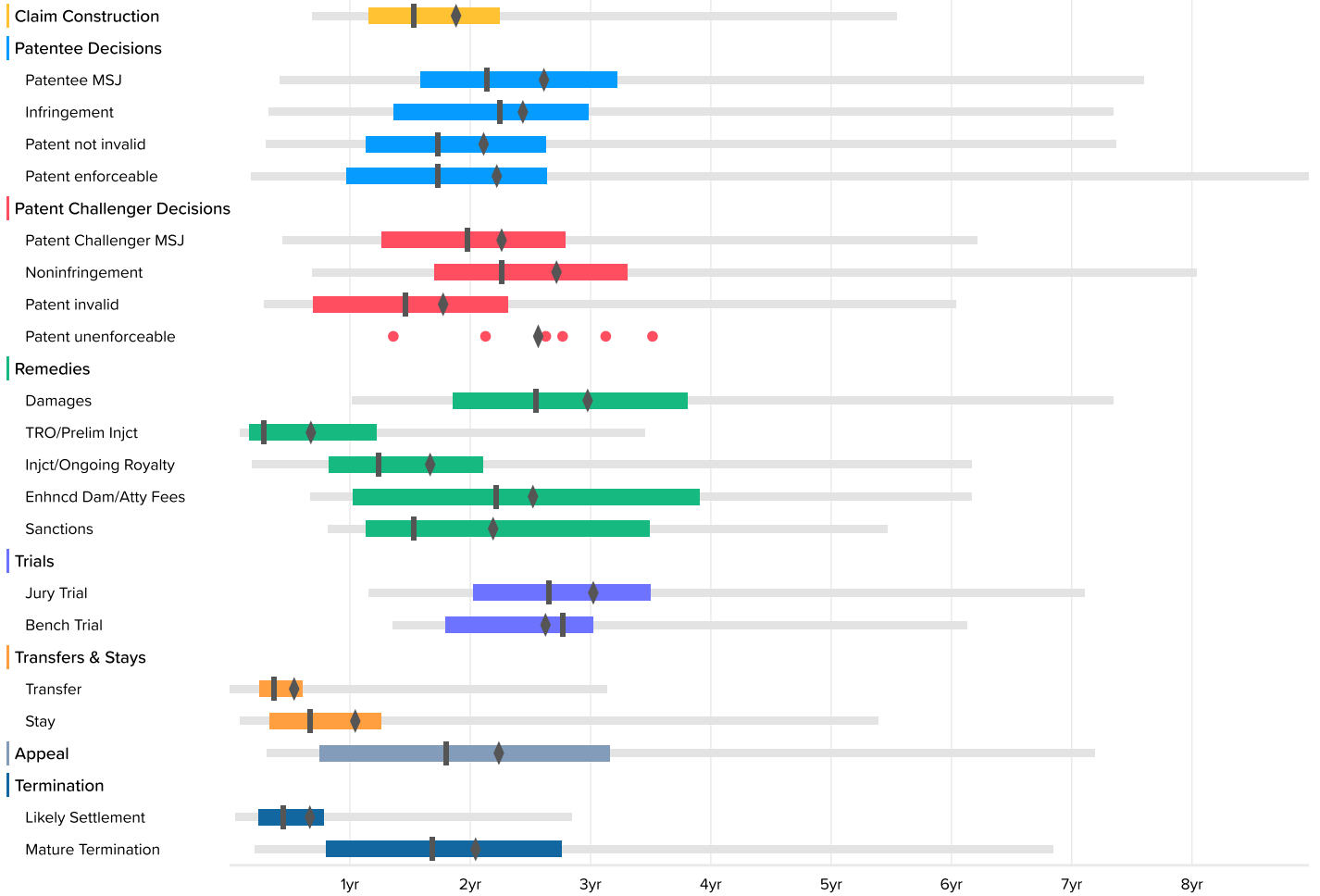


Time to Milestones

VIEW IN BROWSER

Courts: California Northern District Case Filing Date: On or After Jan. 1st, 2008

U.S. District Courts (3501 cases)



U.S. District Courts

	Occurrences	Minimum	2nd Percentile	First Quartile	Median	Third Quartile	98th Percentile	Maximum	Average
Claim Construction	404	-3.4	8.2	13.9	18.4	26.9	66.4	124.9	22.8
Patentee MSJ	117		5.0	19.0	25.6	38.6	91.0	107.4	31.6
Infringement	102	1.7	3.9	16.3	26.9	35.7	88.0	116.1	29.5
Patent not invalid	209	1.7	3.6	13.6	20.7	31.5	88.3	124.3	25.6
Patent enforceable	41	1.7	2.2	11.7	20.7	31.6	107.4	107.4	26.9
Patent Challenger MSJ	283		5.3	15.1	23.7	33.5	74.4	124.3	27.3
Noninfringement	221	1.1	8.2	20.3	27.0	39.6	96.2	126.2	32.8
Patent invalid	321	1.0	3.4	8.3	17.5	27.7	72.3	97.2	21.5
Patent unenforceable	6	16.3			32.3			42.1	31.0
Damages	61	10.6	12.2	22.2	30.5	45.6	88.0	128.1	35.9
TRO/Prelim Injct	14	0.7	1.0	1.9	3.4	14.6	41.3	41.3	8.4
Injct/Ongoing Royalty	84	1.0	2.2	9.9	14.9	25.2	73.9	80.4	20.2
Enhncd Dam/Atty Fees	52	4.9	8.1	12.3	26.5	46.8	73.9	74.2	30.5
Sanctions	22	9.0	9.8	13.5	18.3	41.8	65.5	65.5	26.5
Jury Trial	65	12.6	13.8	24.2	31.8	41.9	85.1	116.1	36.5
Bench Trial	11	13.6	16.2	21.5	33.1	36.1	73.4	73.4	31.7
Transfer	85	0.0		3.0	4.4	7.2	37.5	60.8	6.7
Stay	796		1.0	3.9	8.0	15.1	64.6	154.1	12.8
Appeal	404	-19.7	3.7	9.0	21.6	37.9	86.1	129.3	27.1
Likely Settlement	1994	0.0	0.6	2.9	5.3	9.3	34.1	93.0	8.3
Mature Termination	1309	1.0	2.5	9.6	20.1	33.0	82.0	154.1	24.8