

(12) **United States Patent**  
**Tsimhoni et al.**

(10) **Patent No.:** **US 9,798,323 B2**  
(45) **Date of Patent:** **Oct. 24, 2017**

(54) **CROWD-SOURCED  
TRANSFER-OF-CONTROL POLICY FOR  
AUTOMATED VEHICLES**

(58) **Field of Classification Search**  
None  
See application file for complete search history.

(71) Applicant: **GM GLOBAL TECHNOLOGY  
OPERATIONS LLC**, Detroit, MI (US)

(56) **References Cited**

U.S. PATENT DOCUMENTS

(72) Inventors: **Omer Tsimhoni**, Ramat Hasharon (IL);  
**Claudia V. Goldman-Shenhar**,  
Mevasseret Zion (IL); **Ron M. Hecht**,  
Raanana (IL); **Jeremy A. Salinger**,  
Southfield, MI (US)

9,176,500 B1 \* 11/2015 Teller ..... G05D 1/0088  
2014/0156133 A1 \* 6/2014 Cullinane ..... B60W 30/00  
701/23  
2014/0358353 A1 \* 12/2014 Ibanez-Guzman .. G05D 1/0027  
701/23  
2015/0344066 A1 \* 12/2015 Tsubaki ..... B62D 1/286  
701/41

(73) Assignee: **GM GLOBAL TECHNOLOGY  
OPERATIONS LLC**, Detroit, MI (US)

OTHER PUBLICATIONS

(\* ) Notice: Subject to any disclaimer, the term of this  
patent is extended or adjusted under 35  
U.S.C. 154(b) by 511 days.

Pineda, L., et al., "Fault-Tolerant Planning Under Uncertainty",  
Proceedings of the 23rd International Joint Conference on Artificial  
Intelligence (IJCAI). Beijing, China, Aug. 3-9, 2013.

\* cited by examiner

(21) Appl. No.: **14/444,314**

*Primary Examiner* — Mussa A Shaawat

(22) Filed: **Jul. 28, 2014**

*Assistant Examiner* — Kyung Kim

(65) **Prior Publication Data**

(74) *Attorney, Agent, or Firm* — Lorenz & Kopf, LLP

US 2016/0026180 A1 Jan. 28, 2016

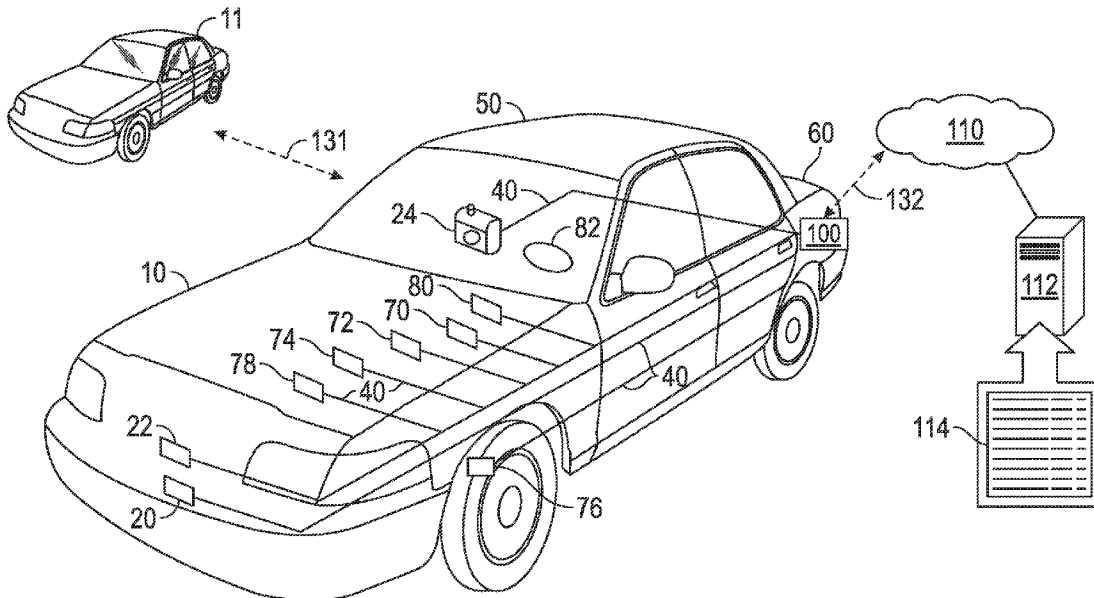
(57) **ABSTRACT**

(51) **Int. Cl.**  
**G05D 1/00** (2006.01)  
**B60W 30/00** (2006.01)  
**G06Q 50/00** (2012.01)

An automated vehicle includes a control system configured  
to selectively transfer the automated vehicle from an auto-  
mated control mode to a manual control mode based on a  
transfer-of-control criterion. The transfer-of-control crite-  
rion is based on a current context of the automated vehicle  
and a dataset of previous transfer-of-control events and  
previous contexts associated with the operation of a plurality  
of additional automated vehicles.

(52) **U.S. Cl.**  
CPC ..... **G05D 1/0061** (2013.01); **B60W 30/00**  
(2013.01); **G06Q 50/00** (2013.01); **G05D**  
**2201/0213** (2013.01)

**20 Claims, 2 Drawing Sheets**



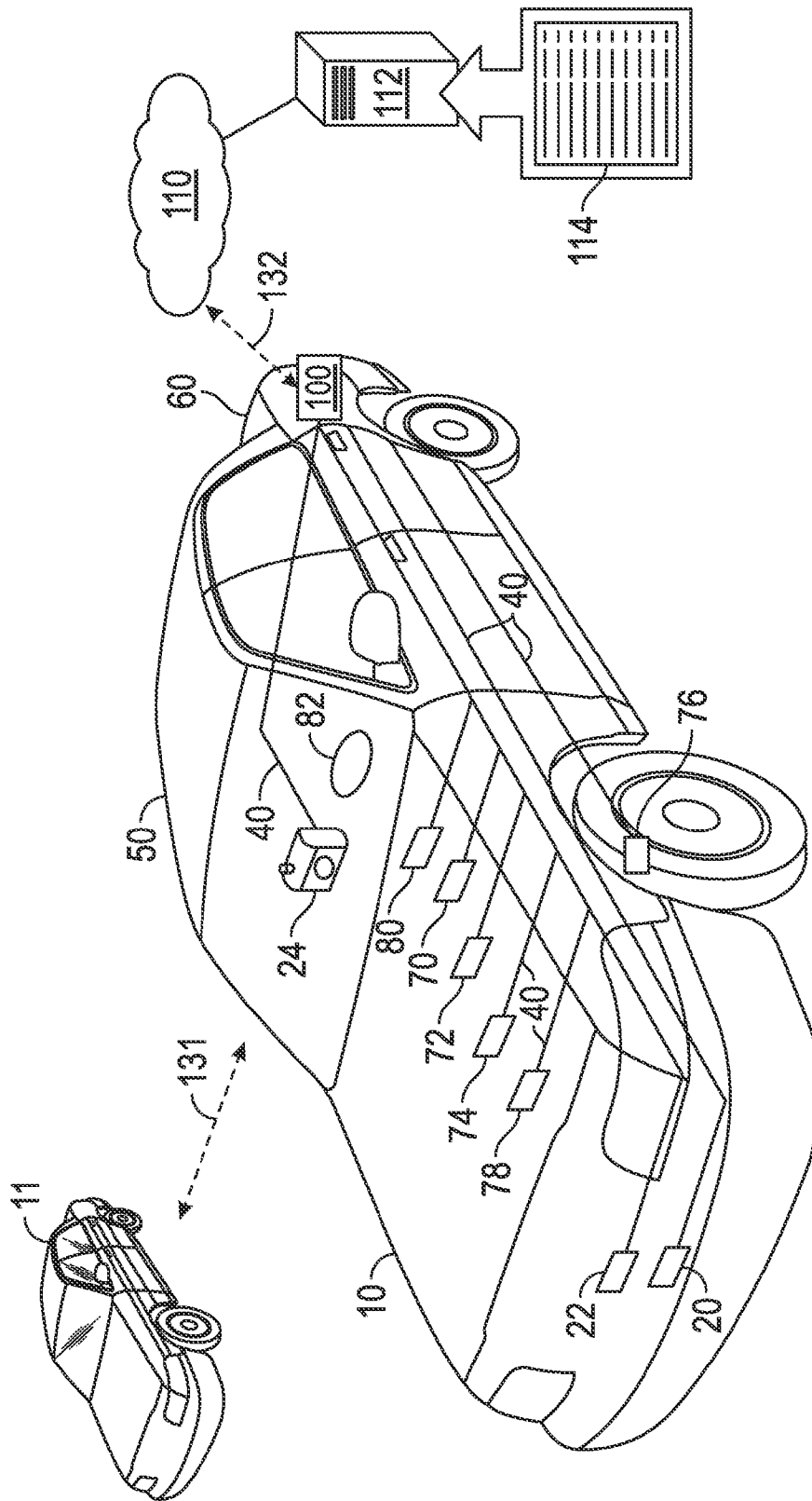


FIG. 1

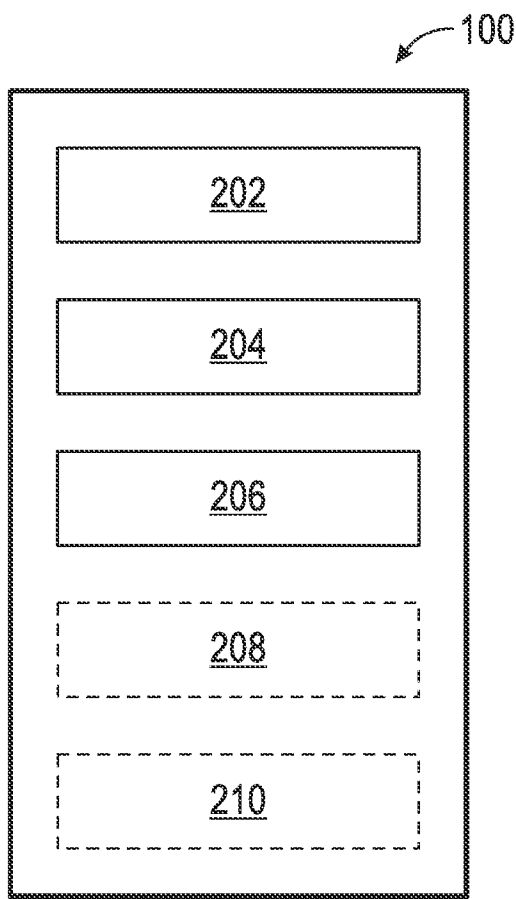


FIG. 2

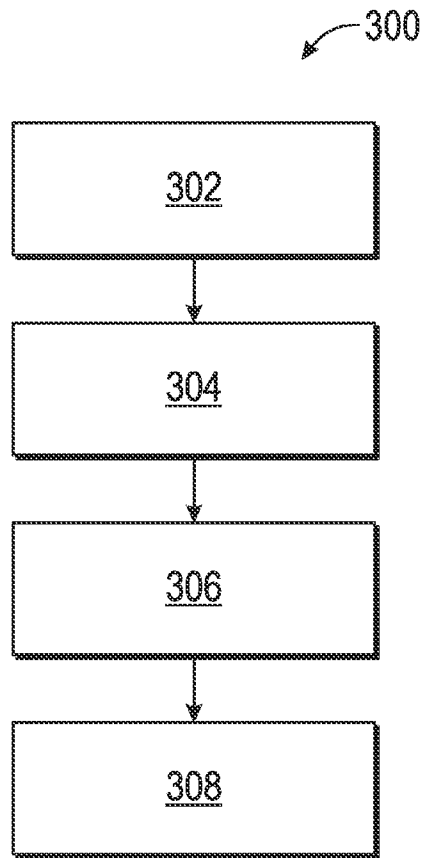


FIG. 3

1

## CROWD-SOURCED TRANSFER-OF-CONTROL POLICY FOR AUTOMATED VEHICLES

### TECHNICAL FIELD

The technical field generally relates to vehicles with the capability of driving automatically, and more particularly relates to systems and methods for transferring control of such vehicles between an automated mode and a manual mode.

### BACKGROUND

Recent years have seen an increased interest in autonomous, semi-autonomous, and otherwise automated vehicles. Such automated vehicles are generally configured to operate in two modes: a “manual” mode in which the driver is able to manually operate the vehicle in the traditional manner, and an “automated” mode in which the vehicle is to some extent operated (via a control system) independently of the driver.

One of the primary challenges posed by automated vehicles is the need for implementing a suitable “transfer-of-control” policy—i.e., the conditions under which the vehicle should switch (or is likely to switch) from an automated mode to a manual mode, or vice versa. Control will typically be transferred to the driver, for example, when the driving task is too difficult to accomplish in an automated mode or when the confidence of the automatic system in its own performance is lower than some threshold value. Currently known mechanisms for transferring control in such contexts can result in sudden transfers and be based on overly rigid, non-adaptive criteria that are not likely to accommodate a particular driver’s needs.

Accordingly, it is desirable to provide improved transfer-of-control policies for automated vehicles. Furthermore, other desirable features and characteristics of the present invention will become apparent from the subsequent detailed description and the appended claims, taken in conjunction with the accompanying drawings and the foregoing technical field and background.

### SUMMARY

In accordance with one embodiment, an automated vehicle includes a control system configured to selectively transfer the automated vehicle from an automated control mode to a manual control mode based on a transfer-of-control criterion. The transfer-of-control criterion is based on a current context of the automated vehicle and a dataset (e.g., a crowdsourced dataset) of previous transfer-of-control events and previous contexts associated with the operation of a plurality of additional automated vehicles.

In accordance with one embodiment, a method for operating an automated vehicle having an automated control mode and a manual control mode includes predicting a transfer-of-control event based on a transfer-of-control criterion, wherein the transfer-of-control criterion is based on a current context of the automated vehicle and a dataset of previous transfer-of-control events and previous contexts associated with the operation of a plurality of additional automated vehicles; and requesting that the automated vehicle perform an action based on the transfer-of-control event.

2

## DESCRIPTION OF THE DRAWINGS

The exemplary embodiments will hereinafter be described in conjunction with the following drawing figures, wherein like numerals denote like elements, and wherein:

FIG. 1 is a conceptual overview of an automated vehicle in accordance with an exemplary embodiment;

FIG. 2 is a functional block diagram of an automatic vehicle control system in accordance with various exemplary embodiments; and

FIG. 3 is a flow chart depicting a method in accordance with an exemplary embodiment.

### DETAILED DESCRIPTION

In general, the subject matter described herein relates to an automated vehicle control system that utilizes crowd-sourced data (e.g., a dataset specifying past transfer-of-control events associated with other vehicles and/or drivers in a similar context) to determine whether transfer-of-control from automated to manual (or vice versa) is likely and/or desirable. In that regard, the following detailed description is merely exemplary in nature and is not intended to limit the application and uses. Furthermore, there is no intention to be bound by any expressed or implied theory presented in the preceding technical field, background, brief summary or the following detailed description. As used herein, the term module refers to any hardware, software, firmware, electronic control component, processing logic, and/or processor device, individually or in any combination, including without limitation: application specific integrated circuit (ASIC), an electronic circuit, a processor (shared, dedicated, or group) and memory that executes one or more software or firmware programs, a combinational logic circuit, and/or other suitable components that provide the described functionality.

Referring now to FIG. 1, in accordance with exemplary embodiments of the subject matter described herein, an automated vehicle (or simply “vehicle”) **10** is illustrated. In this regard, the term “automated vehicle” as used herein generally refers to a vehicle that has an “automated” mode in which the vehicle **10** (through a suitable control system and any number of sensors) is configured to monitor its environment and navigate without human (e.g., driver) interaction. Such a vehicle will generally also have a “manual” mode that allows the driver to resume manual control of the vehicle **10** when, for example, the driver feels more comfortable with manual control. The driver will generally be able to switch between these two modes at will, but the vehicle **10** may automatically transfer back to “manual” under certain conditions. Thus, as mentioned briefly above, the conditions under which an automated vehicle is likely to switch between automated and manual modes is referred to as its “transfer-of-control” policy.

As shown, vehicle **10** is configured to communicate, through any convenient data communication channel **132**, with a server **112** (including a controller, memory, storage, network interface, and other conventional components as is known in the art) configured to store a “crowdsourced” dataset **114** of previous transfer-of-control events and previous contexts associated with the operation of other, additional automated vehicles. Vehicle **10** may also be configured to communicate with other vehicles (e.g., vehicle **11**) in the vicinity using a convenient vehicle-to-vehicle (“V2V”) communication channel **131**. While dataset **114** is illustrated as residing within an external server **112**, the embodiments are not so limited; dataset **114** may be located and/or

distributed over many locations, such as within vehicle **10**, in other vehicles (vehicle **11**), or in a number of databases accessible over one or more networks.

Vehicle **10** also includes an automated vehicle control system (or simply “control system”) **100**. Control system **100** may operate in conjunction with or separate from one or more other automatic vehicle control systems, autonomous driving applications, or vehicle automated steering systems (not shown), such as a vehicle automated steering system providing, for example, adaptive lane centering, low speed lane centering, lane keeping assist, or other applications. Control system **100**, when in an “automated mode” fully or partially controls the steering and throttle of vehicle **10** and reduces the need for driver steering control input via a steering wheel **82** and/or other components of the steering system.

One or more sensors may be coupled to or associated with vehicle **10**, including, for example, a computer vision sensor (e.g., a camera) **24**, a lidar or ladar sensor **20**, a radar sensor **22**, and/or any another remote sensing device useful in determining the relative location of vehicle **10** with respect to nearby features such as lane markers, road shoulder, median barriers, road edges, other vehicles, and the like. Camera **24** may, for example, measure lane offset, heading angle, lane curvature and/or other information (e.g., speed, acceleration, yaw-rate, other driver input etc.) and provide such information to control system **100**.

In one embodiment of the present disclosure, vehicle **10** may include one or more devices or sensors to measure vehicle steering measurements, vehicle steering conditions, vehicle steering parameters, vehicle dynamics, driver input, or other vehicle related conditions or measurements. The vehicle dynamics measurement device(s) may include one or more steering angle sensors **70** and/or steering torque sensors **80**. The vehicle dynamics measurement devices may also include one or more accelerometers **72**, speedometers **74**, wheel speed sensors **76**, inertial measurement units (IMUs) **78**, and the like. The vehicle dynamics measurement devices may measure vehicle dynamics conditions or driver input including steering angle, steering torque, steering direction, lateral (e.g., angular or centripetal) acceleration, longitudinal acceleration, yaw-rate, lateral and longitudinal velocity, speed, wheel rotation, and other vehicle dynamics characteristics of vehicle **10**. The measured vehicle dynamics, vehicle conditions, steering measurements, steering conditions, or driver input information may be transferred to control system **100** via, for example, a wire link (e.g., a controller area network bus CAN bus, Flexray link, Ethernet link) **40** or a wireless link. Vehicle **10** will also generally include one or more internal displays **25** viewable by the driver and/or passengers. As will be appreciated by those skilled in the art, in the interest of simplicity, various automated steering and throttle components commonly used in connection with automated vehicles have not been illustrated in FIG. 1.

In general, control system **100** includes any suitable combination of hardware and/or software configured to selectively transfer automated vehicle **10** from an automated control mode to a manual control mode based on a transfer-of-control criterion. In one embodiment, the transfer-of-control criterion is based on a current context of the automated vehicle and a dataset (e.g., a crowdsourced dataset **114**) of previous transfer-of-control events and previous contexts associated with the operation of a number of other automated vehicles in similar contexts. Stated another way, control system **100** attempts to “predict” that a transfer-of-control event is likely to (or should) take place with respect

to vehicle **10** based on how other vehicles and drivers have reacted under similar conditions, as determined from “event data” and “context data” previously received and compiled with respect to other automated vehicles.

The term “context” as used herein refers to any number of attributes used to characterize the state of vehicle **10**, its driver (if any), and its surroundings. The terms “transfer-of-control event data” and “event data” refer to any suitable representation of the type of transfer-of-control event (e.g., “changed from automated mode to manual mode”) and the time at which that event occurred. The context associated with vehicle **10** may include, for example, the vehicle’s geographical location (e.g., GPS coordinates), the speed and acceleration of vehicle **10**, whether vehicle **10** is being driven during the day or night, weather conditions (rain, snow, sunny, cloudy, etc.), the identity of the driver, the mood of the driver (as determined from physiological sensors and/or wearable devices), the local curvature of the road, the nature of any media being played within the vehicle (e.g., type of music, volume, etc.), whether vehicle **10** had previously been operated on the current road, traffic conditions (congested, light, etc.). The context may be represented in any suitable fashion, using various encoding schemes. In one embodiment, for example, the context is stored as a suitable data structure including a set of alphanumeric codes, each associated with a respective context state.

In one embodiment, wherein the control system is configured to receive, over a network, a transfer-event probability value computed by a processor remote from the automated vehicle **10**, wherein the transfer-event probability data is computed based on the dataset and the current context of the automated vehicle **10**. In one embodiment, the transfer-of-control criterion includes determining whether the transfer-event probability value (or likelihood value) is greater than a predetermined threshold.

In some embodiments, control system **100** is configured to request that the automated vehicle **10** perform an action based on the transfer-of-control criterion. This action may take a variety of forms, ranging from simply notifying the user that a transfer-of-control event is to take place (and optionally allowing the driver to accept or reject that event) to actions that provide accident avoidance or otherwise. In some embodiments, the alert includes a visual representation (e.g., shown via display **25**) of a reason for transferring from the automated control mode to the manual control mode. Such a reason might be a summary of the particular context or contexts that led to that condition (e.g., “night-time+rain”, “sharp curve ahead”, etc.) In other embodiments, the action is an accident avoidance action. In still other embodiments, the operation of vehicle **10** is automatically modified—e.g., by lowering the audio volume, increasing or decreasing the cabin temperature, engaging the electronic stability control, or the like. In another embodiment, the set speed of the cruise control unit is lowered if a very sharp curve is approaching and there is high probability of a transfer to manual control. In such a case, lowering the speed may avoid the transfer of control. In another embodiment, the automotive headlight settings are altered—e.g., the high-beam lights may be activated.

By way of example, consider an example where a particular curve is known to be difficult to negotiate. Dataset **114** will reflect that many automated vehicles entering this curve have transferred control to manual. Subsequently, when vehicle **10** approaches this curve in the automated mode, the driver is alerted (e.g., via a visual cue on display **25**) to the fact that a transfer-of-control event is likely to

5

occur. In another example, dataset **114** might reflect that many automated vehicles have difficulty recognizing the lane markers on a particular stretch of highway when the sun is at a particular position. Subsequently, when vehicle **10** is driven on that stretch of highway under similar conditions (e.g., same time-of-day), the driver might be notified that he or she should take manual control. As another example, dataset **114** might reflect that a particular stretch of road is associated with nearly no transfer-of-control events. In such a case, the system may display an alert suggesting to overly-cautious drivers that the automated mode might be engaged with high confidence.

FIG. **2** is a conceptual block diagram of an automatic vehicle control system (or simply “control system”) **100** in accordance with various exemplary embodiments. In general, control system **100** includes an event reporter module **202**, an analysis module **204**, and an action determination module **206**.

Event reporter module **202** includes any suitable combination of hardware and/or software configured to transmit, over a network (e.g., **110** of FIG. **1**), transfer-of-control event data and context data associated with the automated vehicle to a server (e.g., server **112** of FIG. **1**) storing a dataset (e.g., **114**) of previous transfer-of-control events and previous contexts associated with the operation of a plurality of additional automated vehicles.

Analysis module **204** includes any suitable combination of hardware and/or software configured to predict that a transfer-of-control event will (or should) occur based on the transfer-of-control criterion. As described above, the transfer-of-control criterion may take a variety of forms. While analysis module **204** is illustrated as being part of control module **100**, certain functionality provided by this module might be distributed to other servers or controllers, such as server **112** of FIG. **1**. That is, analysis as described below may be performed substantially within vehicle **10** (e.g., based on previously downloaded information derived from dataset **114**), performed substantially by external server **112**, or any combination thereof.

In one embodiment, a transfer-event probability value is computed based on the dataset **114** and the current context of automated vehicle **10**, and the transfer-of-control criterion includes determining whether the transfer-event probability value (or a value derived from the probability value, such as a likelihood ratio) is greater than a predetermined threshold.

More particularly, given a “context” that is characterized by a vector of features  $f_i$  (e.g., “raining”, “night time”, geographical location, etc.), analysis module **204** computes the probability of a transfer as well as the probability of not transferring, given dataset **114**. That is, analysis module **204** computes  $\Pr(f_1, \dots, f_n | \text{transfer})$  and  $\Pr(f_1, \dots, f_n | \text{not (transfer)})$  using, for example, naive Bayesian analysis, as is known in the art. Next, analysis module **100** computes the log-likelihood  $\rho$  based on those probabilities, e.g.:

$$\rho = \Pr(f_1, \dots, f_n | \text{transfer}) / \Pr(f_1, \dots, f_n | \text{not (transfer)}).$$

Finally, analysis module **204** determines whether the log-likelihood value  $\rho$  is greater than a predetermined threshold, e.g., a value of 0.6. It will be appreciated that the predetermined threshold may vary, depending upon any number of factors.

Action determination module **206** includes any suitable combination of hardware and/or software configured to request that the automated vehicle **10** perform an action based on the transfer-of-control event, as described in detail above. That is, using the previous example, if it determined that the log-likelihood value  $\rho$  is greater than the threshold

6

of 0.6, action determination module **206** may notify the driver (e.g., using a dashboard indicator or display **25** of FIG. **1**) that a transfer-of-control event is to take place. This notification might include the reason that control is being transferred (e.g., “sharp turn in rainy conditions” or the like).

In one embodiment, control system **100** further includes a learning module **208** configured to learn when control system **100** itself is likely to perform a particular action, given local data (i.e., not crowdsourced data) associated with the behavior of the vehicle and/or its driver. For example, learning module **208** might learn from past hard-braking events, anti-lock braking system (ABS) activation, electronic stability control (ESC) events, and the like for vehicle **10** and/or its driver. Learning module **208** might also take into account high accident areas and/or unstable road conditions where skidding or ESC activation is more likely. The resulting information can then be used to modify the transfer-of-event criterion and/or the action or alert to be given.

In one embodiment, control system **100** further includes a second learning module **210** configured to adapt the transfer-of-control criterion based on learned driver behavior. For example, learning module **210** might determine that the driver tends to engage/disengage automated driving features in certain contexts, or that the driver chooses certain turning points in response to turn-by-turn advice. Learning module **210** may also determine, for example, that the driver tends to turn on or off the high-beam headlights or disables adaptive headlight functions in certain contexts, that the driver tends to turn on or off the fog lights in certain contexts, and/or that the driver tends to activate the “recirculation” climate control feature in certain contexts (e.g., heavy traffic). Learning module **210** might also determine power consumption as a function of position, slope, and other context information. The resulting information can be used to modify the transfer-of-event criterion and/or the action to be taken in a given context.

FIG. **3** is a flowchart depicting a method **300** in accordance with one embodiment. While the illustrated method is shown as including four steps (**302-308**), it will be appreciated that additional and/or intervening steps may be performed in various implementations. In various embodiments, the method can be scheduled to run based on predetermined events, and/or can run continually during operation of the vehicle **10**.

Referring now to FIG. **3** in conjunction with FIG. **1**, first, at **302**, a crowdsourced dataset (**114** in FIG. **1**) is compiled based on transfer-of-control events and contexts provided by a plurality of automated vehicles (e.g., vehicles **11** and **10** of FIG. **1**). The details of such a dataset are described in detail above.

Next, at **304**, vehicle **10** is placed in an automated mode. This may be accomplished, for example, by user actuation of a switch, an audio command, through a navigation system interface, or through any other conventional user interface known in the art.

Subsequently, at **306**, a transfer-of-control event is predicted based on a transfer-of-control criterion, wherein the transfer-of-control criterion is based on the current context of the automated vehicle and the dataset of previous transfer-of-control events and previous contexts associated with the operation of a plurality of additional automated vehicles (compiled at **302**). Finally, at **308**, the system requests that the automated vehicle perform an action based on the transfer-of-control event, as described above. This step might include downloading (via connection **132**) portions of dataset **114** that relate to the current context of vehicle **10** (e.g., its location), or relevant probability data previously

7

computed externally by server **112**. In some embodiments, the information needed to predict a transfer-of-control event is pre-loaded for a particular region in which vehicle **10** is being driven. As a result, connectivity (via **132**) need not be constant.

In summary, systems and methods have been described for an automated vehicle control system that utilizes crowd-sourced data (e.g., a dataset specifying past transfer-of-control events associated with other vehicles and/or drivers in a similar context) to determine whether transfer of control from automated to manual is likely and/or desirable in a given context. This results in increased system predictability and improved confidence from a driver's point of view.

While at least one exemplary embodiment has been presented in the foregoing detailed description, it should be appreciated that a vast number of variations exist. It should also be appreciated that the exemplary embodiment or exemplary embodiments are only examples, and are not intended to limit the scope, applicability, or configuration of the disclosure in any way. Rather, the foregoing detailed description will provide those skilled in the art with a convenient road map for implementing the exemplary embodiment or exemplary embodiments. It should be understood that various changes can be made in the function and arrangement of elements without departing from the scope of the disclosure as set forth in the appended claims and the legal equivalents thereof.

What is claimed is:

1. An automated vehicle comprising:
  - a control system configured to selectively transfer the automated vehicle from an automated control mode to a manual control mode based on a transfer-of-control criterion;
    - wherein the transfer-of-control criterion is based on a current context of the automated vehicle and a dataset of previous transfer-of-control events and previous contexts associated with the operation of a plurality of additional automated vehicles.
2. The automated vehicle of claim **1**, wherein the control system is configured to receive, over a network, a transfer-event probability value computed by a processor remote from the automated vehicle, wherein the transfer-event probability data is computed based on the dataset and the current context of the automated vehicle.
3. The automated vehicle of claim **2**, wherein the transfer-of-control criterion includes determining whether the transfer-event probability value is greater than a predetermined threshold.
4. The automated vehicle of claim **1**, wherein the control system is further configured to request that the automated vehicle perform an action based on the transfer-of-control criterion.
5. The automated vehicle of claim **4**, wherein the action includes an alert indicating that the automated vehicle is to be transferred from the automated control mode to the manual control mode.
6. The automated vehicle of claim **4**, wherein the alert includes a visual representation of a reason for transferring from the automated control mode to the manual control mode or remaining in the automated mode.
7. The automated vehicle of claim **4**, wherein the action is an accident avoidance action.
8. The automated vehicle of claim **4**, wherein the control system is further configured to learn when it is likely to perform the action.

8

**9**. The automated vehicle of claim **1**, wherein the control system is further configured to adapt the transfer-of-control criterion based on driver behavior.

**10**. A method for operating an automated vehicle having an automated control mode and a manual control mode, the method comprising:

predicting, with a processor, a transfer-of-control event based on a transfer-of-control criterion, the transfer-of-control criterion based on a current context of the automated vehicle and a dataset of previous transfer-of-control events and previous contexts associated with the operation of a plurality of additional automated vehicles; and

requesting, with the processor, that the automated vehicle perform an action based on the transfer-of-control event, the action including transferring control of the automated vehicle to the manual control mode.

**11**. The method of claim **10**, further including receiving, over a network, a transfer-event probability value computed by a processor remote from the automated vehicle, wherein the transfer-event probability data is computed based on the dataset and the current context of the automated vehicle.

**12**. The method of claim **11**, wherein the transfer-of-control criterion includes determining whether the transfer-event probability value is greater than a predetermined threshold.

**13**. The method of claim **10**, wherein the action includes outputting an alert indicating that the automated vehicle is to be transferred from the automated control mode to the manual control mode.

**14**. The method of claim **10**, further including adapting the transfer-of-control criterion based on driver behavior.

**15**. An automated vehicle control system for a vehicle having an automated control mode and a manual control mode, the automated vehicle control system comprising:

an event reporter module configured to transmit, over a network, transfer-of-control event data and context data associated with the automated vehicle to a server storing a dataset of previous transfer-of-control events and previous contexts associated with the operation of a plurality of additional automated vehicles;

an analysis module, including a processor, configured to predict a transfer-of-control event based on a transfer-of-control criterion, the transfer-of-control criterion based on a current context of the automated vehicle and the dataset; and

an action determination module configured to request that the automated vehicle perform an action based on the transfer-of-control event, the action including transferring control of the automated vehicle to the manual control mode.

**16**. The automated vehicle control system of claim **15**, wherein the analysis module is configured to receive, over a network, a transfer-event probability value computed by a processor remote from the automated vehicle, wherein the transfer-event probability data is computed based on the dataset and the current context of the automated vehicle.

**17**. The automated vehicle control system of claim **16**, wherein the transfer-of-control criterion includes determining whether the transfer-event probability value is greater than a predetermined threshold.

**18**. The automated vehicle control system of claim **15**, wherein the action includes an alert indicating that the automated vehicle is to be transferred from the automated control mode to the manual control mode.

19. The automated vehicle control system of claim 15, wherein the analysis module is further configured to learn when the action determination module is likely to request the action.

20. The automated vehicle control system of claim 15, 5 wherein the analysis module is further configured to adapt the transfer-of-control criterion based on driver behavior.

\* \* \* \* \*