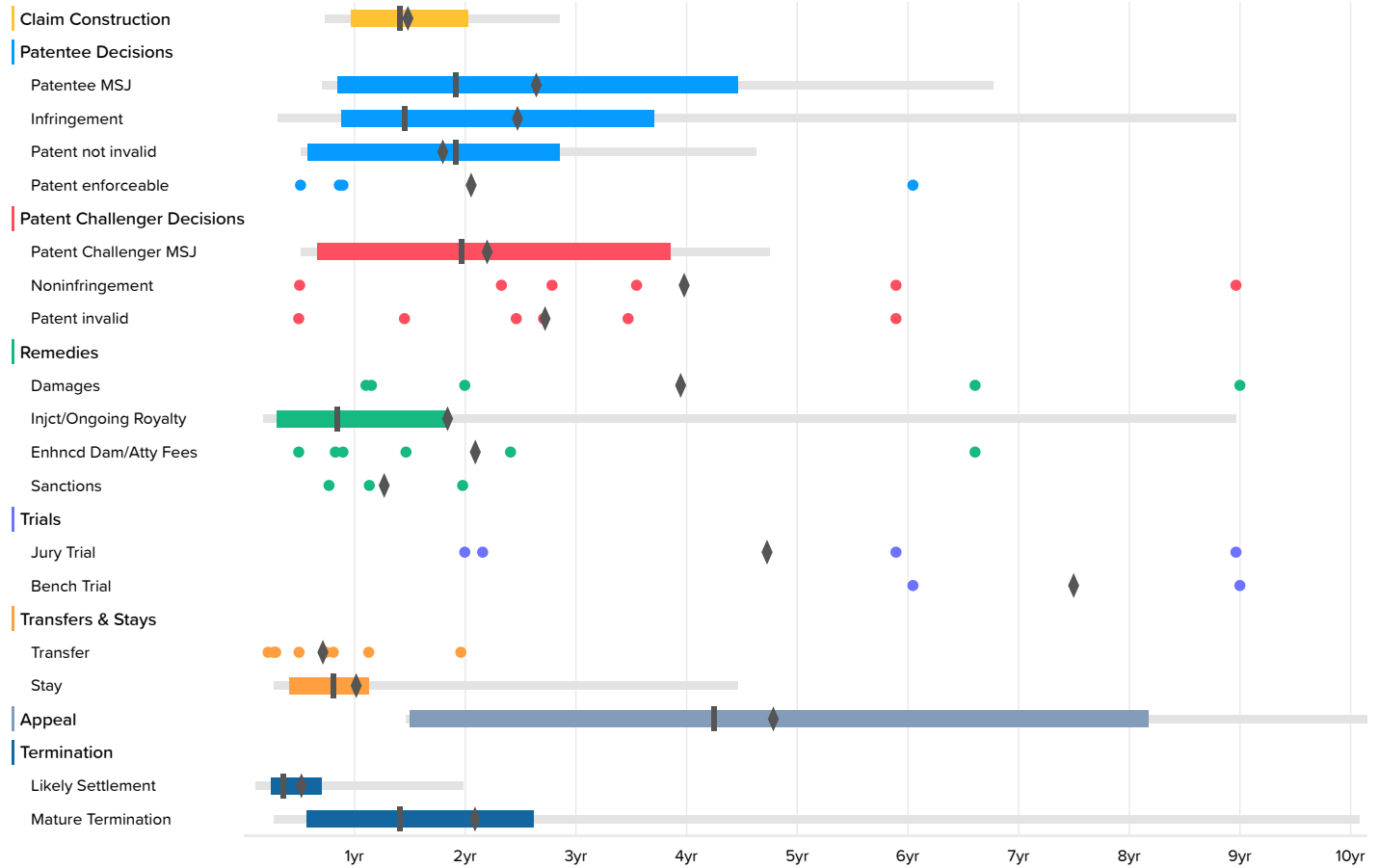


[VIEW IN BROWSER](#)

Time to Milestones

Courts: Michigan Western District Case Filing Date: On or After Jan. 1st, 2008

U.S. District Courts (165 cases)



U.S. District Courts

	Occurrences	Minimum	2nd Percentile	First Quartile	Median	Third Quartile	98th Percentile	Maximum	Average
Claim Construction	18	6.9	8.7	11.6	16.9	24.3	34.2	34.2	18.0
Patentee MSJ	10	6.0	8.5	10.1	22.9	53.4	81.1	81.1	31.9
Infringement	16	3.6	3.7	10.5	17.4	44.4	107.3	107.3	29.9
Patent not invalid	11	3.5	6.1	6.9	22.9	34.2	55.5	55.5	21.8
Patent enforceable	4	6.1			10.5			72.4	24.9
Patent Challenger MSJ	13	6.0	6.2	8.0	23.6	46.2	57.0	57.0	26.6
Noninfringement	6	6.0			37.9			107.3	47.9
Patent invalid	6	5.9			31.0			70.6	32.9
Damages	5	13.2			23.9			107.8	47.6
Injct/Ongoing Royalty	18	1.2	2.1	3.6	10.1	22.1	107.3	107.3	22.3
Enhncd Dam/Atty Fees	6	5.9			14.1			79.1	25.3
Sanctions	3	9.2			13.6			23.7	15.5
Jury Trial	4	23.9			48.2			107.3	56.9
Bench Trial	2	72.4			90.1			107.8	90.1
Transfer	8	2.6			7.4			23.5	8.9
Stay	19	3.2	3.3	4.9	9.7	13.5	53.4	53.4	12.5
Appeal	10	15.6	17.5	18.0	50.9	97.9	121.6	121.6	57.6
Likely Settlement	102	0.1	1.3	3.0	4.3	8.4	23.7	46.1	6.5
Mature Termination	58	1.2	3.2	6.7	16.9	31.4	120.7	137.3	25.3