



US008911232B2

(12) **United States Patent**  
**Nguyen et al.**

(10) **Patent No.:** **US 8,911,232 B2**  
(45) **Date of Patent:** **Dec. 16, 2014**

(54) **INTRAORAL DENTAL SUCTION AND ISOLATION SYSTEM**

(71) Applicant: **Incept Incorporated**, Santa Ana, CA (US)

(72) Inventors: **Thien Nguyen**, Santa Ana, CA (US);  
**Tam Thanh Pham**, San Francisco, CA (US)

(73) Assignee: **Incept, Inc.**, Irvine, CA (US)

(\* ) Notice: Subject to any disclaimer, the term of this patent is extended or adjusted under 35 U.S.C. 154(b) by 0 days.

(21) Appl. No.: **14/100,323**

(22) Filed: **Dec. 9, 2013**

(65) **Prior Publication Data**

US 2014/0162209 A1 Jun. 12, 2014

**Related U.S. Application Data**

(60) Provisional application No. 61/734,939, filed on Dec. 7, 2012.

(51) **Int. Cl.**  
*A61C 17/06* (2006.01)  
*A61C 17/02* (2006.01)

(52) **U.S. Cl.**  
CPC ..... *A61C 17/04* (2013.01); *A61C 17/0208* (2013.01); *A61C 17/043* (2013.01)  
USPC ..... **433/93**; 433/136; 433/140

(58) **Field of Classification Search**  
USPC ..... 433/91-96, 140, 229, 136  
See application file for complete search history.

(56) **References Cited**

**U.S. PATENT DOCUMENTS**

2,937,445 A \* 5/1960 Erickson ..... 433/93  
3,090,122 A \* 5/1963 Erickson ..... 433/93

3,768,477 A \* 10/1973 Anders et al. .... 433/91  
3,802,081 A \* 4/1974 Rogers ..... 433/93  
3,877,691 A \* 4/1975 Foster ..... 5/600  
3,924,333 A \* 12/1975 Erickson ..... 433/93  
4,017,975 A \* 4/1977 Johnson ..... 433/94  
4,024,642 A \* 5/1977 Zorovich ..... 433/93  
4,192,071 A \* 3/1980 Erickson ..... 433/93  
4,718,662 A \* 1/1988 North ..... 482/11  
4,802,851 A \* 2/1989 Rhoades ..... 433/93  
5,078,602 A \* 1/1992 Honoshofsky ..... 433/91  
5,890,899 A \* 4/1999 Sclafani ..... 433/140

(Continued)

**OTHER PUBLICATIONS**

U.S. Appl. No. 14/228,046, Thien Nguyen, Intraoral Device With Mesh, filed Mar. 27, 2014.

(Continued)

*Primary Examiner* — Cris L Rodriguez

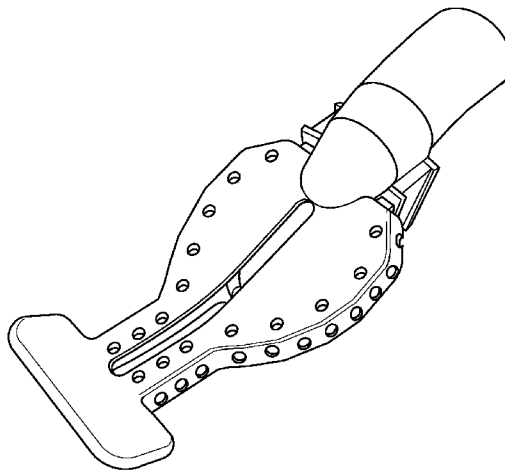
*Assistant Examiner* — Hao D Mai

(74) *Attorney, Agent, or Firm* — Lewis Roca Rothgerber LLP

(57) **ABSTRACT**

A dental mouthpiece is provided that may be attached to a high-suction dental adapter for the purpose of assisting the dental staff during dental procedures through chair-side, hands-free suction, and isolation. Such a mouthpiece may include a main body portion, a cheek retractor portion, and a suction connector portion. In some embodiments, the main body portion, cheek retractor portion, and suction connector portion (and sub-portions thereof) may be molded in one piece, preferably by injection molding. In an exemplary embodiment, the mouthpiece may be made of a material that is flexible, translucent, conducive to injection molding, high heat-resistant, and autoclavable. Such a material may include silicone. Because the mouthpiece may be made of a high heat-resistant and autoclavable material, such a mouthpiece may be reusable.

**35 Claims, 11 Drawing Sheets**



(56)

References Cited

U.S. PATENT DOCUMENTS

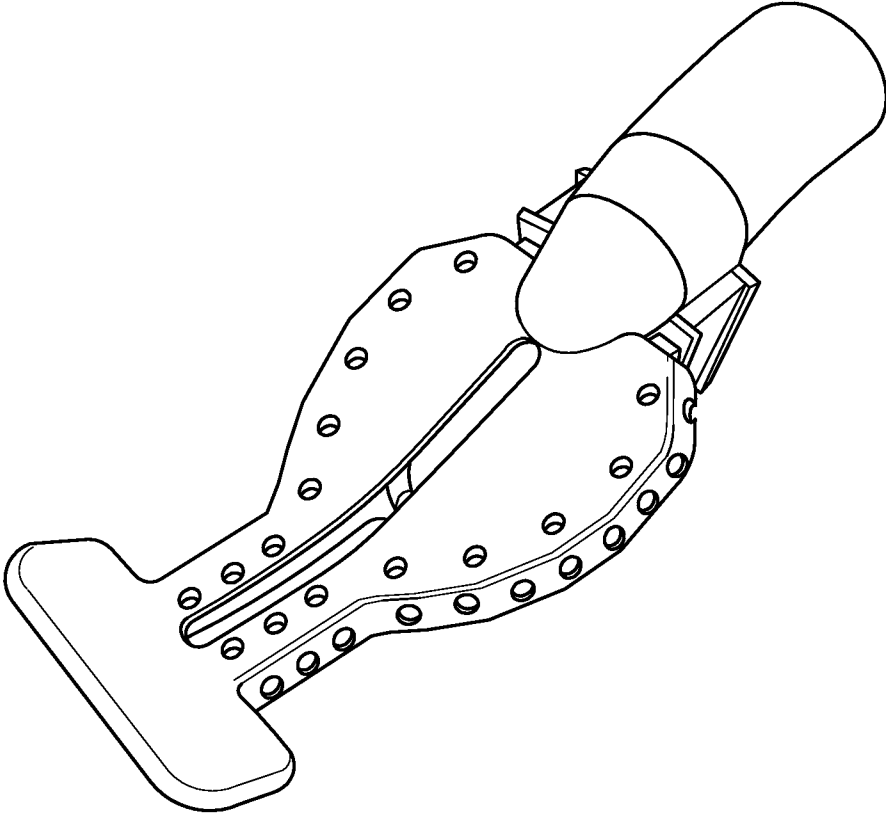
6,022,214 A 2/2000 Hirsch et al.  
 6,213,772 B1\* 4/2001 Costello ..... 433/93  
 6,338,627 B2 1/2002 Hirsch et al.  
 6,575,746 B2 6/2003 Hirsch et al.  
 D495,799 S \* 9/2004 Hirsch et al. .... D24/152  
 D497,426 S 10/2004 Hirsch et al.  
 6,908,308 B2 6/2005 Hirsch et al.  
 6,974,321 B2\* 12/2005 Hirsch et al. .... 433/93  
 7,287,981 B2 10/2007 Hirsch  
 7,293,990 B2\* 11/2007 Hirsch et al. .... 433/93  
 7,611,354 B2\* 11/2009 Hirsch ..... 433/93  
 D615,203 S 5/2010 Hirsch et al.  
 7,748,981 B2\* 7/2010 Hirsch et al. .... 433/93  
 8,029,280 B2\* 10/2011 Black et al. .... 433/93  
 8,057,227 B2 11/2011 Hirsch et al.  
 8,057,228 B2 11/2011 Hirsch et al.  
 8,075,310 B2 12/2011 Hirsch et al.  
 8,297,973 B2 10/2012 Hirsch et al.  
 8,529,256 B2 9/2013 Hirsch et al.  
 D696,779 S 12/2013 Hirsch et al.  
 2006/0063129 A1\* 3/2006 Hirsch ..... 433/93

2008/0166684 A1\* 7/2008 Kanas ..... 433/93  
 2008/0318183 A1\* 12/2008 Suzman ..... 433/93  
 2009/0123886 A1\* 5/2009 Vaska ..... 433/27  
 2009/0274991 A1\* 11/2009 Black et al. .... 433/93  
 2011/0207076 A1 8/2011 Hirsch et al.  
 2011/0311942 A1\* 12/2011 Black et al. .... 433/93  
 2014/0212837 A1 7/2014 Nguyen  
 2014/0212838 A1 7/2014 Nguyen  
 2014/0212839 A1 7/2014 Nguyen  
 2014/0212840 A1 7/2014 Nguyen  
 2014/0212841 A1 7/2014 Nguyen

OTHER PUBLICATIONS

U.S. Appl. No. 14/228,050, Thien Nguyen, Intraoral Device With Bridge, filed Mar. 27, 2014.  
 U.S. Appl. No. 14/228,054, Thien Nguyen, Intraoral Device With Stability Start, filed Mar. 27, 2014.  
 U.S. Appl. No. 14/228,057, Thien Nguyen, Intraoral Device With Slit, filed Mar. 27, 2014.  
 U.S. Appl. No. 14/228,061, Thien Nguyen, Intraoral Device With Detachable Mouth Prop, filed Mar. 27, 2014.

\* cited by examiner



*FIG. 1A*

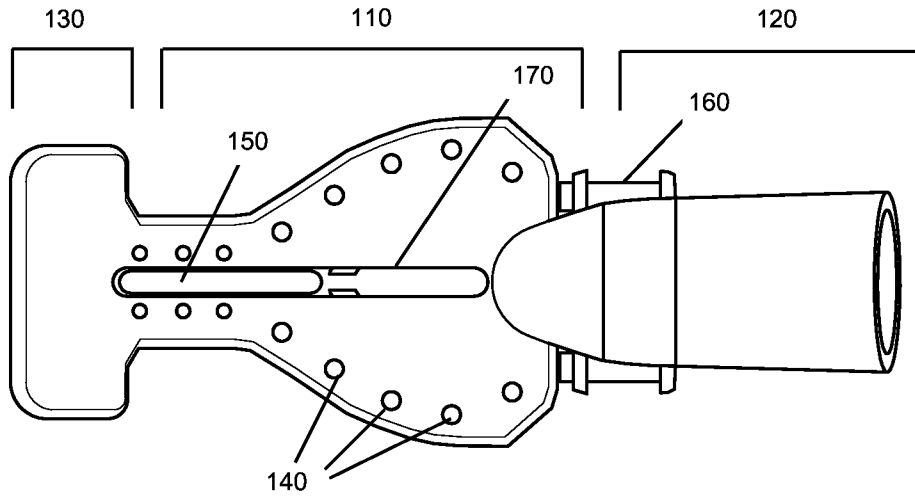


FIG. 1B

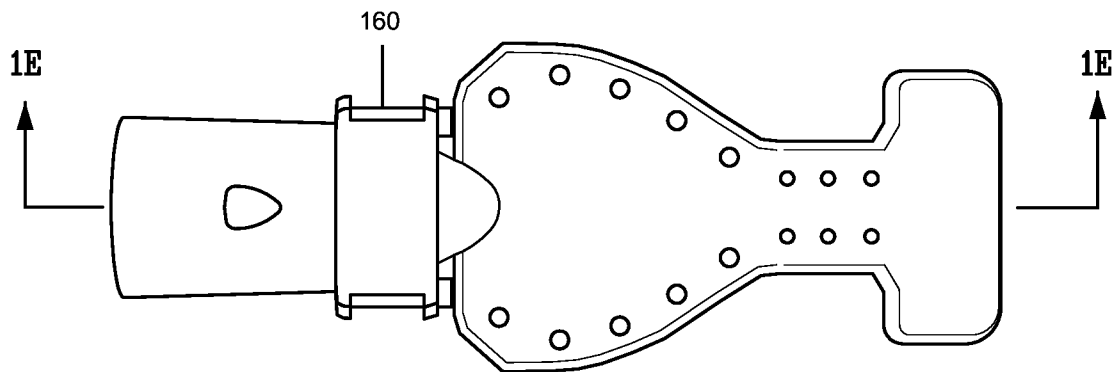
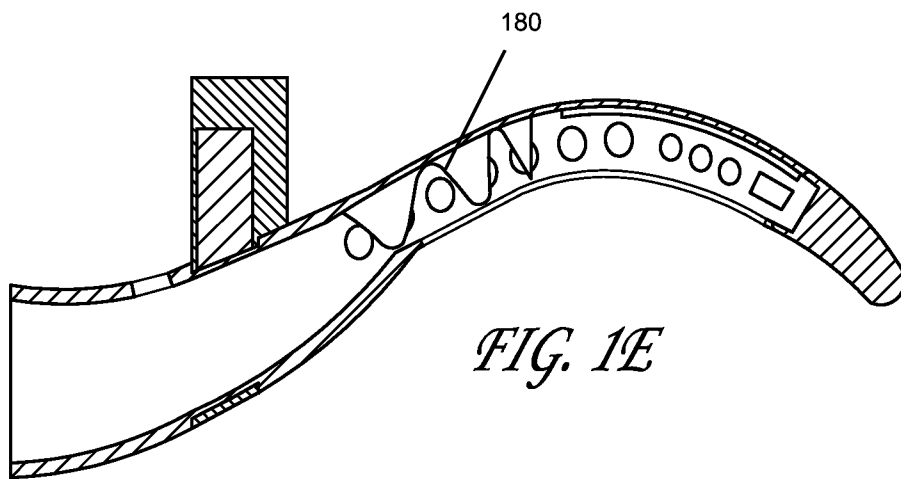
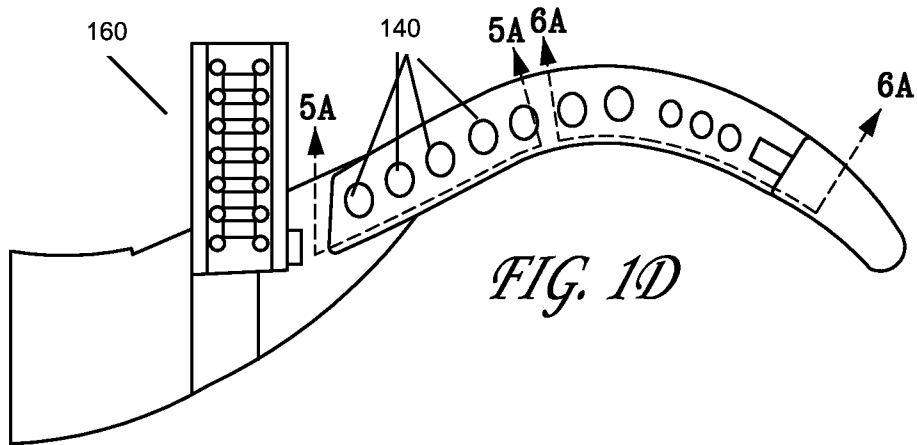
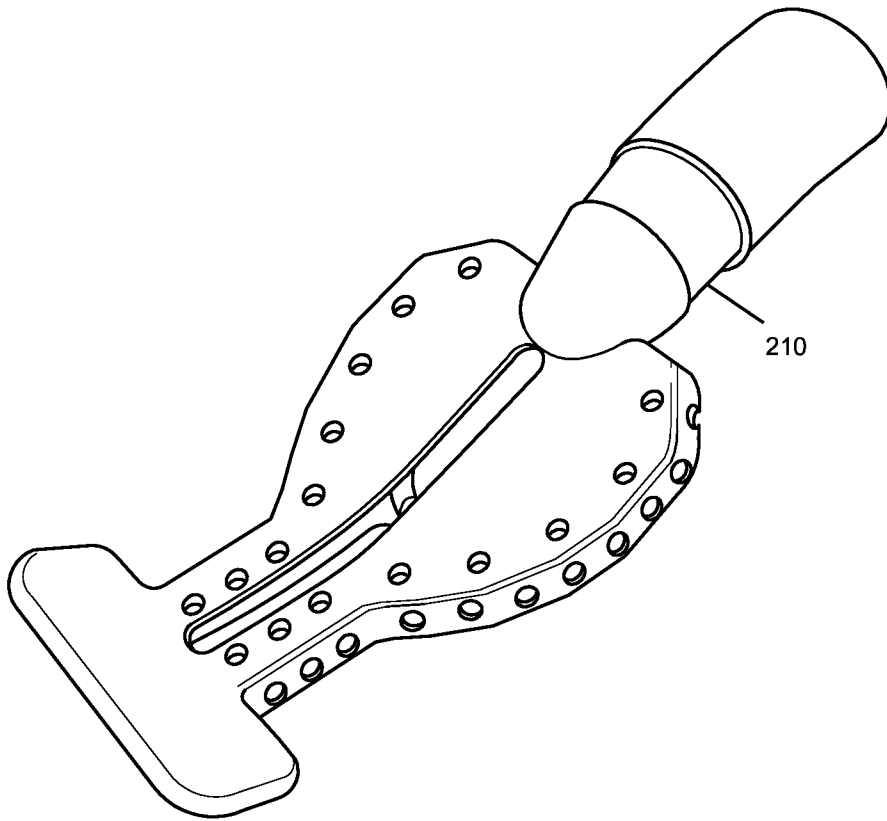


FIG. 1C





*FIG. 2A*

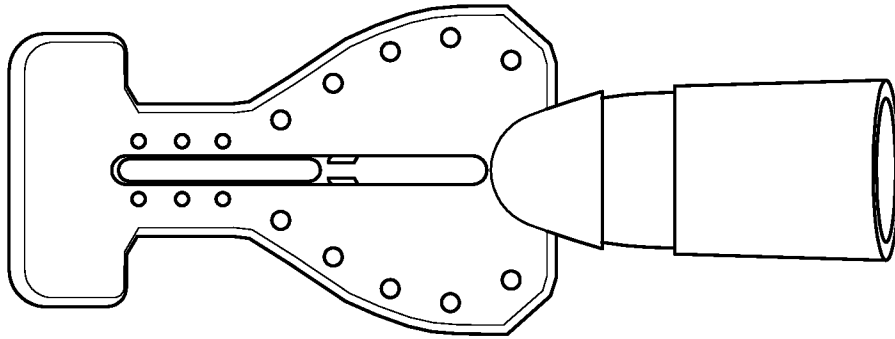


FIG. 2B

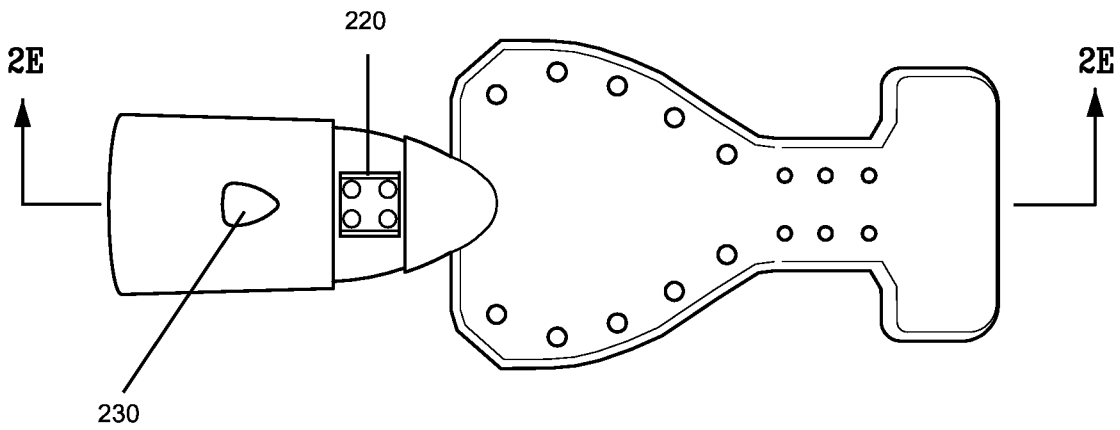
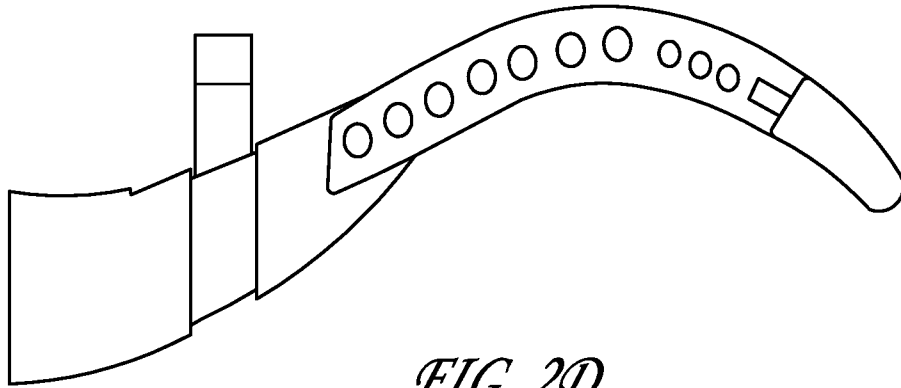
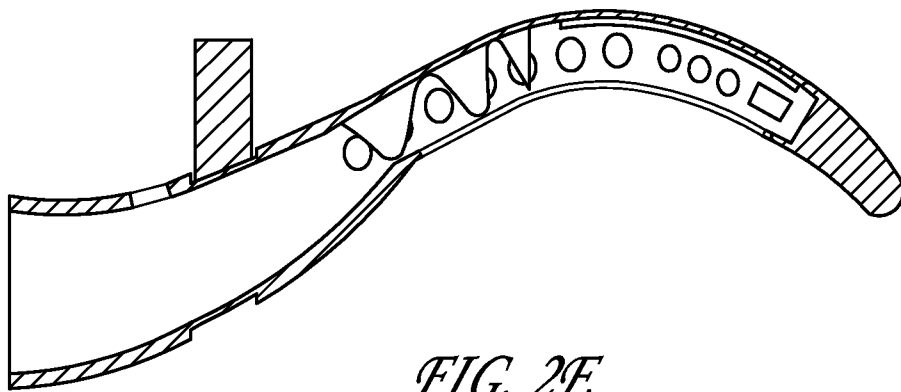


FIG. 2C



*FIG. 2D*



*FIG. 2E*

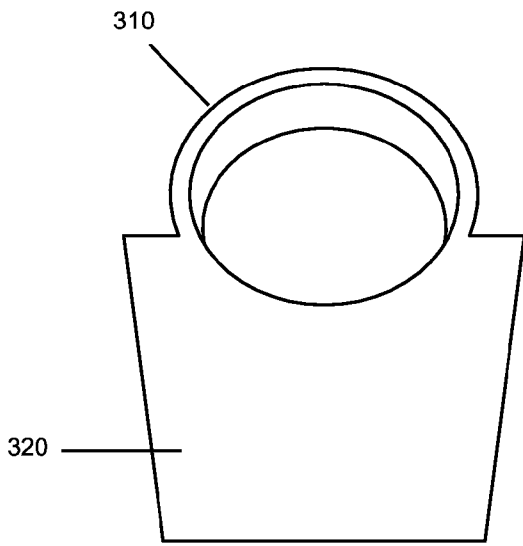


FIG. 3A

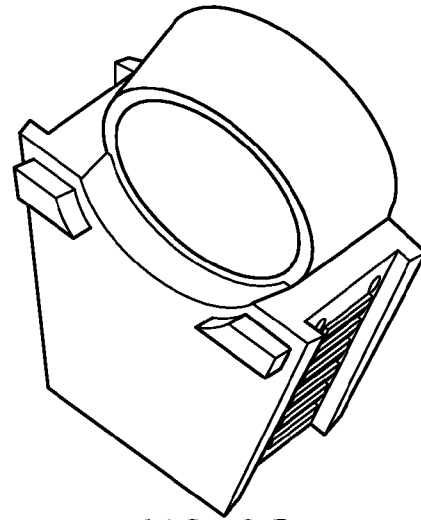


FIG. 3D

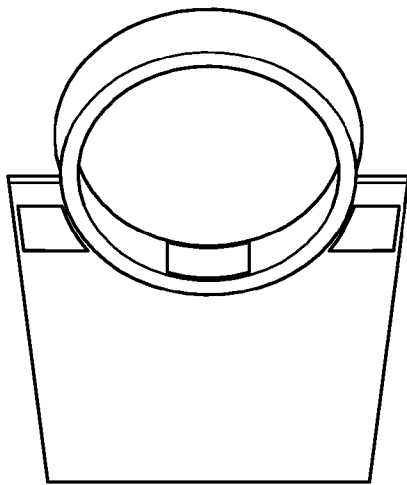


FIG. 3B

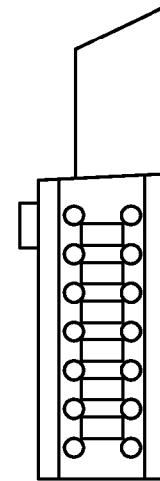


FIG. 3E

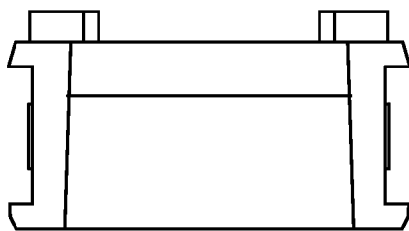


FIG. 3C

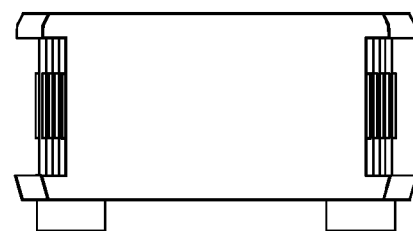
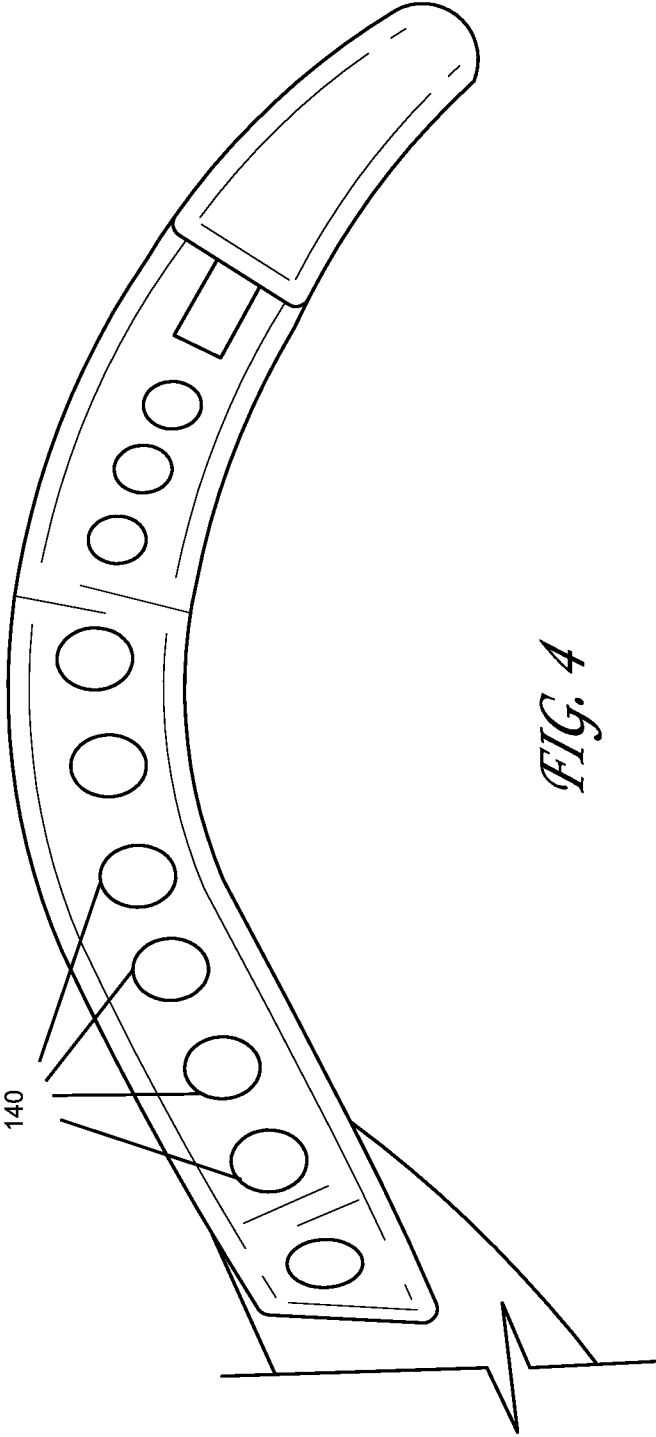
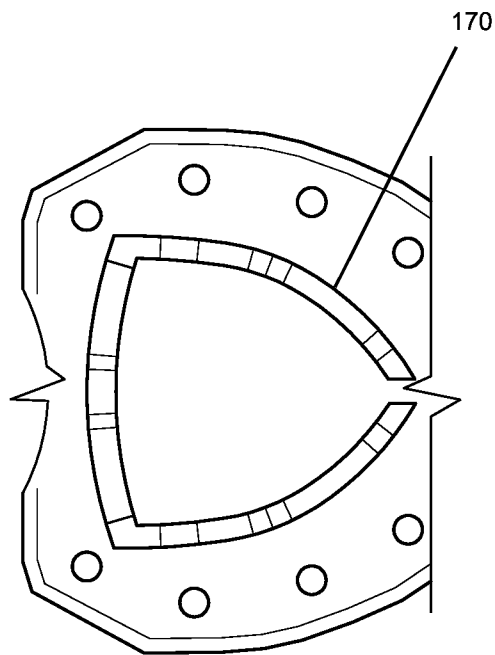


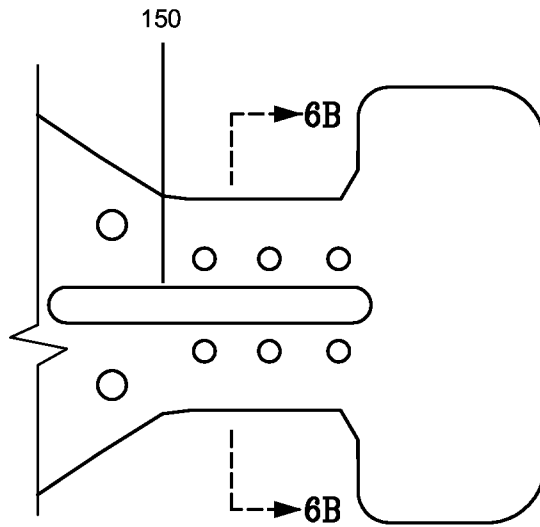
FIG. 3F



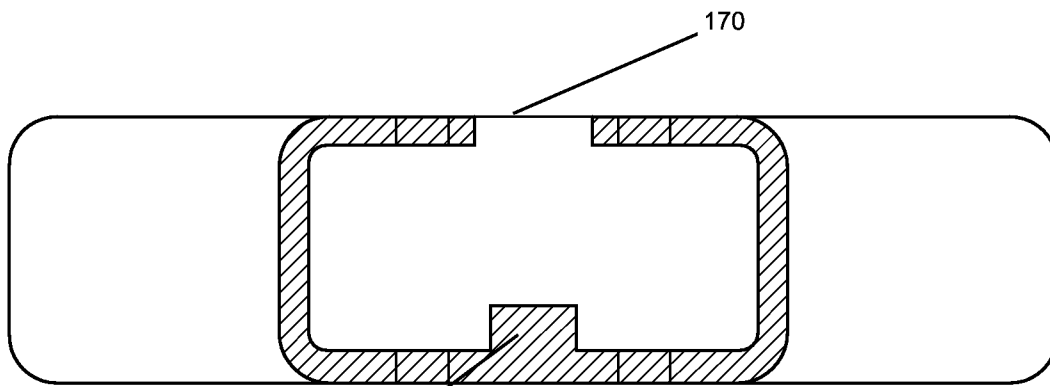
*FIG. 4*



*FIG. 5*

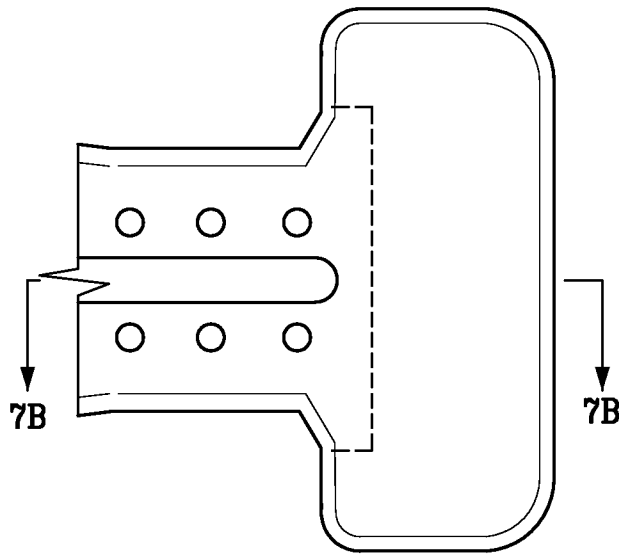


*FIG. 6A*

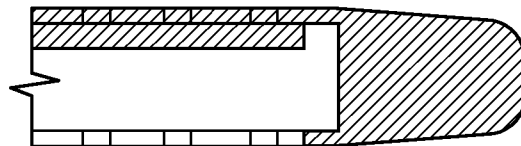


*FIG. 6B*

150



*FIG. 7A*



*FIG. 7B*

**INTRAORAL DENTAL SUCTION AND ISOLATION SYSTEM**

**CROSS-REFERENCE TO RELATED APPLICATIONS**

The present application claims the priority benefit of U.S. provisional patent application No. 61/734,939 filed Dec. 7, 2012, the disclosure of which is incorporated herein by reference.

**BACKGROUND OF THE INVENTION**

1. Field of the Invention

The present invention generally relates to the field of dental mouthpieces. More specifically, the present invention relates to intraoral dental suction and isolation mouthpieces.

2. Description of Related Art

Various mouthpieces are currently used by dental health professionals, dental hygienists, and dental assistants in the field of dentistry. In the past, a dental patient has been treated by a traditional two-person team that comprises a dental professional and a dental assistant. Further, dental treatment may be provided by the team using many different types of dental equipment and materials. Such dental equipment and materials may include such items as an intraoral mirror, a bite block, a slow speed suction ejector, a high speed suction ejector, gauzes, cotton rolls, and dry angles. Each item of dental equipment may be used for different purposes, though some may be used in combination for some types of dental services. As such, a dental professional seeking to provide such dental services may need to use multiple items of such dental equipment. An important role of the dental assistant is therefore to assist the dental professional in coordinating the use of these multiple items of different equipment and materials.

There is, therefore, a need in the art for improved systems and methods of providing dental services in a more efficient, comfortable, and safe manner to the dental patient.

**SUMMARY OF THE CLAIMED INVENTION**

Embodiments of the present invention may include a mouthpiece that may be attached to a high-suction dental adapter for the purpose of assisting the dental staff during dental procedures through chair-side, hands-free suction, and isolation. Such a mouthpiece may comprise a main body portion, a cheek retractor portion, and a suction connector portion. In some embodiments, the main body portion, cheek retractor portion, and suction connector portion (and sub-portions thereof) may be molded in one piece, preferably by injection molding. In an exemplary embodiment, the mouthpiece may be made of a material that is flexible, translucent, conducive to injection molding, high heat-resistant, and autoclavable. Such a material may include silicone. Because the mouthpiece may be made of a high heat-resistant and autoclavable material, such a mouthpiece may be reusable.

The main body portion may comprise an enclosed pocket made up of an anterior wall, a posterior wall, and a side wall in between the anterior and posterior walls. The side wall may be perforated with a plurality of perforations. Such perforations may constitute a mesh. Additional perforations may be located on the anterior and posterior walls. The main body portion may further include a slit along a longitudinal, central axis on the anterior wall. Such openings (e.g., perforations and slit) allow for suction of air, fluids, and small debris from the patient's mouth, through the openings into the interior

portion, and into the suction connector portion towards a suction source. Because the mouthpiece is made of a flexible and resilient material (e.g., silicone), the mouthpiece may be bent when placed in a patient's mouth to conform to the shape of the mouth. When properly positioned, the suction connector portion may protrude from one side of the patient's mouth, while the main body lies against the back of the patient's mouth, and the cheek retractor presses against the patient's cheek on the opposite side of the patient's mouth.

The main body may further include an protruding bridge structure on the interior surface of the posterior wall. Such a bridge structure may protrude from the interior surface in a wave shape with crests and troughs. The crests provide a plurality of contact points with the anterior wall to keep the anterior wall separated from the posterior wall during suction. Meanwhile, the troughs provide gaps that allow for suction of air, fluids, and small debris through the bridge structure.

**BRIEF DESCRIPTION OF THE FIGURES**

FIG. 1A is a perspective view of an exemplary mouthpiece with a detachable mouth prop.

FIG. 1B is a top view of the exemplary mouthpiece and detachable mouth prop of FIG. 1A.

FIG. 1C is a bottom view of the exemplary mouthpiece and detachable mouth prop of FIG. 1A.

FIG. 1D is a side view of the exemplary mouthpiece and detachable mouth prop of FIG. 1A.

FIG. 1E is a cross-sectional view of the exemplary mouthpiece and detachable mouth prop of FIG. 1A.

FIG. 2A is a perspective view of the exemplary mouthpiece of FIG. 1A where the detachable mouth prop has been detached.

FIG. 2B is a top view of the exemplary mouthpiece of FIG. 2A.

FIG. 2C is a bottom view of the exemplary mouthpiece of FIG. 2A.

FIG. 2D is a side view of the exemplary mouthpiece of FIG. 2A.

FIG. 2E is a cross-sectional view of the exemplary mouthpiece of FIG. 2A.

FIG. 3A is a front view of an exemplary mouth prop.

FIG. 3B is a back view of the exemplary mouth prop of FIG. 3A.

FIG. 3C is a bottom view of the exemplary mouth prop of FIG. 3A.

FIG. 3D is a perspective view of the exemplary mouth prop of FIG. 3A.

FIG. 3E is a side view of the exemplary mouth prop of FIG. 3A.

FIG. 3F is a top view of the exemplary mouth prop of FIG. 3A.

FIG. 4 is a close-up view of exemplary mesh sides in an exemplary mouthpiece.

FIG. 5 is a close-up view of an internal bridge in an exemplary mouthpiece.

FIG. 6A is a close-up view of an exemplary reinforcing bar in an exemplary mouthpiece.

FIG. 6B is a cross-sectional view of the exemplary reinforcing bar of FIG. 6A.

FIG. 7A is a close-up view of an exemplary cheek retractor portion in an exemplary mouthpiece.

FIG. 7B is a cross-sectional view of the exemplary cheek retractor portion of FIG. 7A.

**DETAILED DESCRIPTION**

Embodiments of the present invention provide for a mouthpiece comprising a main body portion, a cheek retractor por-

tion, and a suction connector portion. In some embodiments, the main body portion, cheek retractor portion, and suction connector portion (and sub-portions thereof) may be molded as one-piece, preferably by injection molding. In an exemplary embodiment, the mouthpiece may be made of a material that is flexible, translucent, conducive to injection molding, high heat-resistant, and autoclavable. Such a material may include silicone. Because the mouthpiece may be made of a high heat-resistant and autoclavable material, such a mouthpiece may be reusable.

FIGS. 1A-E are different views of an exemplary mouthpiece with an attachable mouth prop **160**, while FIGS. 2A-E are different views of the exemplary mouthpiece of FIG. 1A where the attachable mouth prop **160** has been detached. Such a mouthpiece may include a main body portion **110**, a suction connector portion **120**, and a cheek retractor portion **130**.

The main body portion **110** may include mesh or perforations **140**, a stability bar **150**, an open slit **170**, and an internal bridge **180**. The main body portion **110** may connect to a suction connector portion **120** on one end and a cheek retractor portion **130** at the other end. Such a cheek retractor portion **130** may be configured to press against and retract a patient's cheek away from the patient's teeth. When placed in a patient's mouth, the suction connector portion **120** may protrude from one side of the patient's mouth, while the main body portion **110** lies against the back of the patient's mouth, and the cheek retractor portion **130** retracts the patient's cheek on the opposite side of the patient's mouth. The flexibility of the material used to form the mouthpiece allows for some bending when placed in the patient's mouth. The material is, however, resilient enough that the cheek retractor portion presses against the inside of the patient's cheek with such pressure being sufficient to move the cheek away from the patient's teeth.

An exemplary main body portion **110**, when placed in a mouth, may include an anterior wall facing the front of the mouth (e.g., the side with slit **170**) and a posterior wall facing the back of the mouth. The two walls may connect at a superior wall and an inferior wall forming a body that is at least partially enclosed. Superior may be used herein to refer to the side that rests against a roof of a patient's mouth when placed therein, and inferior may be used to refer to the side that rests against the floor of the patient's mouth. The superior and inferior sides may be formed identically, which may allow for the mouthpiece to change orientation such that the superior side may appear as the inferior side and vice versa, in the new orientation. When in use, the respective sides of the main body portion **110** may serve to protect and separate the top of the mouth and the bottom of the mouth/tongue. In addition, the main body portion **110** may also serve to protect the back of the mouth (e.g., throat and airway) from falling debris.

Much of the main body portion **110** of the mouthpiece may be shaped as a straight-line arrowhead or shield whose base generally conforms to the intraoral shape of a patient's mouth. Differently-sized mouthpieces may be provided for differently-sized mouths of adults and children. Part of the base side of the arrowhead may be formed with thicker walls than the rest of the main body. Such thickening may provide additional stability.

In addition, the main body portion **110** of the mouthpiece may include a plurality of holes **140** distributed along the superior and inferior sides of the anterior and posterior walls to assist in suctioning of water, saliva and debris from the oral cavity. In some embodiments, a set of holes may also form a

mesh along the walls of the superior and inferior edges. FIG. 4 is a close-up view of an exemplary mesh wall in an exemplary mouthpiece.

At the narrow end of the arrowhead that connects to the cheek retractor portion **130**, the main body portion **110** may include a rectangular portion. Narrower than the base of the arrowhead, the rectangle may additionally include a reinforcing bar (or stability bar) **150** (described in further detail below) and may be at least partially crossed by a slit **170** (described in further detail below) into the interior of the pocket of the main body portion **110**.

Stability bar **150** may be a protrusion or otherwise a thickened area that reinforces the stability of the rectangular portion and assist in shaping this region to the intraoral posterior shape of a patient's mouth. FIG. 6A is a close-up view of an exemplary stability bar **150** of an exemplary mouthpiece. FIG. 6B is a cross-sectional view of the exemplary reinforcing bar in the cheek retractor connector portion of FIG. 6A.

In some embodiments, the internal, rectangular-shaped reinforcing or stability bar **150** may be located distally to the internal wavelike bridge structure **180** and attached to both the interior side of the posterior surface of the main body and the rectangular portion. Such a stability bar **150** may be located in the area where a positioned mouthpiece begins to wrap from the lingual side of the most posterior mandibular tooth, around the distal side of the most posterior tooth, and to anterior side of the most posterior mandibular tooth, thereby assisting in shaping the mouthpiece to the general intraoral shape of a patient's mouth.

Various embodiments of the mouthpiece may further include a longitudinal, open slit **170** extending over approximately two-thirds of the main body on the anterior surface. Running along the center of the main body across the rectangle and most of the arrowhead, such a slit **170** may assist in capture and suction of water, saliva and debris, as well as assisting in cleaning and maintenance.

Additionally, the main body of the mouthpiece may include a bridge structure **180** on an interior surface to ensure that the anterior and posterior surfaces remain separated during suction. FIG. 1E is a cross-sectional view of the mouthpiece in which the bridge structure **180** is illustrated. FIG. 5 is a close-up view of the bridge structure **180** without the surrounding walls of the main body portion. Such a bridge structure **180** may be formed as an wave-like protrusion that generally corresponds to the distance between the anterior and posterior walls extending substantially (e.g., within 1 mm) the full distance at its crest and substantially flush to the surface at its trough. In some embodiments, the bridge structure **180** may be centrally-located in the main body portion **110** of the mouthpiece. The gaps (or troughs) between the waves of the bridge structure **180** assist in the suction-driven transfer of water and saliva to the suction connector portion **120** and ultimately, into a central suction vacuum. In some embodiments, the bridge structure **180** may follow the shape of a logo (e.g., an arrowhead or shield).

The suction connector portion **120** may be oval-shaped and also attached to the main body portion **110**. The suction connector portion **120** may be formed with thicker walls than the main body portion **110** and configured to attach to a high-suction vacuum adapter and to assist in transferring water, saliva, and debris from the oral cavity to the external adapter for removal. The suction connector portion **120** may also include an internal stop to assist in sliding the mouthpiece onto the adapter to a desired depth. The suction connector portion **120** may additionally have an external, concave, notched region **210** that corresponds to a removable

5

strap such that when the strap is in place, the external walls of the strap and the rest of the connector portion may be flush.

The cheek retractor portion **130** is illustrated as a hammer-head distal region, which may be attached to the main body portion **110**. FIG. 7A is a close-up view of an exemplary cheek retractor portion **130** in an exemplary mouthpiece. FIG. 7B is a cross-sectional view of the exemplary cheek retractor portion **130** of FIG. 7A.

The mouthpiece may be used with a mouth prop **160**, as illustrated in FIG. 1 (with a mouth prop **160**) and FIG. 2 (illustrated without the mouth prop **160**). FIGS. 3A-E provide different close-up views of an exemplary mouth prop **160**. The removable strap **310** may be attached to mouth prop **160**, which may be used to prop open a patient's mouth and teeth. In this regard, the suction connector portion **120** may additionally have an external plug **220** (FIG. 2C) protruding from the posterior side of the suction connector portion **120**. Such a plug **220** may correspond to and serve to connect with an opening in the mouth prop **160**. The mouth prop **160** may be reinforced by the presence of the plug **220** in the opening, thereby resulting in a more crush-resistant, nearly incompressible, and stable mouth prop **160**. In some embodiments, the suction connector portion **120** may further have a cutout **230** (e.g., which may be shaped as a logo) providing extra interlocking with a corresponding protrusion (e.g., which may also be shaped as a logo) on an external high-suction vacuum adapter.

The mouth prop **160** may be made of thickened silicone material injection molded in a single piece with an elastic strap corresponding to the circumference of the suction connector portion. The mouth prop **160** has an internal, rectangular-shaped female slot designed to fit snugly with the external, rectangular-shaped male plug **220** of the suction connector portion **120** of the mouthpiece. Mouth props may be made in different sizes for differently sized mouths. Because the mouth prop and mouthpiece are detachable from each other, different sizes of each may be mixed and matched as needed for a particular patient's mouth.

The mouthpiece as described herein may be used with a one-piece, autoclavable, high-suction vacuum adapter. Such a high-suction vacuum body adapter may be made of a single homogenous material. Having a single lever design, such a vacuum adapter may function in the same manner as all the current high-suction vacuum evacuators and saliva ejectors in controlling the removal of water, saliva, and debris from the oral cavity to the outside vacuum source. The single lever may be designed to control the removal of water, saliva, and debris from the at least partially enclosed so main body through a single, large evacuation conduit within the suction connector portion.

While various embodiments have been described above, it should be understood that they have been presented by way of example only, and not limitation. The descriptions are not intended to limit the scope of the invention to the particular forms set forth herein. Thus, the breadth and scope of a preferred embodiment should not be limited by any of the above-described exemplary embodiments. It should be understood that the above description is illustrative and not restrictive. To the contrary, the present descriptions are intended to cover such alternatives, modifications, and equivalents as may be included within the spirit and scope of the invention as defined by the appended claims and otherwise appreciated by one of ordinary skill in the art. The scope of the invention should, therefore, be determined not with reference to the above description, but instead should be determined with reference to the appended claims along with their full scope of equivalents.

6

What is claimed is:

**1.** A dental mouthpiece composed of a bendable material, the dental mouthpiece formed in a curve and comprising:

- a main body portion at a central part of the curve and comprising a defined pocket having an anterior wall inside the curve, a posterior wall outside the curve, and a side wall in between the anterior wall and the posterior wall, wherein the anterior wall, the posterior wall, and the side wall define an interior portion of the defined pocket, wherein the posterior wall comprises a bridge structure protruding from an interior surface of the posterior wall in a wave shape, the protruding bridge structure comprising a plurality of spaced contact points that keep the anterior wall separated from the posterior wall during suction, wherein the spaced contact points are at crests of the wave shape, and wherein a plurality of troughs of the wave shape between the spaced contact points allow for suction through the bridge structure;
- a cheek retractor portion connected to the main body portion and having a surface that applies pressure when the dental mouthpiece is bent, wherein the pressure is based on resilience of the bendable material; and
- a suction connector portion for connecting the interior portion of the main body portion to a vacuum suction source, wherein the suction connector portion is connected to the main body portion on an end opposite the cheek retractor.

**2.** The mouthpiece of claim **1**, wherein the side wall includes a plurality of perforations.

**3.** The mouthpiece of claim **1**, wherein the anterior wall and the posterior wall each includes a plurality of perforations.

**4.** The mouthpiece of claim **1**, wherein the anterior wall further includes a slit along a central axis.

**5.** The mouthpiece of claim **1**, further comprising a stability bar protruding from an interior surface of the posterior wall, wherein a thickness of the stability bar reinforces stability during bending of the dental mouthpiece.

**6.** The mouthpiece of claim **1**, wherein the main body portion, the cheek retractor portion, and the suction connector portion are injection-molded as one piece.

**7.** The mouthpiece of claim **1**, wherein the material is a flexible, translucent, high heat-resistant, autoclavable silicone-based material.

**8.** The mouthpiece of claim **1**, wherein the suction connector portion comprises an internal stop to assist in positioning of the vacuum suction source or a vacuum adaptor.

**9.** The mouthpiece of claim **1**, further comprising a detachable mouth prop.

**10.** The mouthpiece of claim **9**, wherein the detachable mouth prop comprises a strap configured to fit around the suction connector portion, wherein an external surface of the suction connector portion comprises a notch region corresponding to the strap, and wherein an external surface of the strap is substantially flush with a remaining external surface of the suction connector portion when the strap sits in the notch region.

**11.** The mouthpiece of claim **10**, wherein the strap and other portions of the mouth prop are injection-molded as a single piece.

**12.** The mouthpiece of claim **9**, wherein the suction connector portion further comprises an external plug protrusion corresponding to an opening in the mouth prop.

**13.** The mouthpiece of claim **12**, wherein the plug protrusion fits into the opening to provide additional crush-resistance and decreased compressibility.

7

14. The mouthpiece of claim 1, wherein the suction connector portion comprises a cutout corresponding to a protrusion on a vacuum adapter for an interlocking fit.

15. The mouthpiece of claim 1, wherein the anterior wall and the posterior wall have different thicknesses.

16. The mouthpiece of claim 1, wherein the main body portion comprises:

a base portion connected to the suction connector portion at a first end,

a cheek retractor connector portion connected to a second end of the base portion, the second end opposite the first end of the base portion, wherein the cheek retractor connector portion is narrower than the base portion, and the cheek retractor connects to main body portion at the cheek retractor connector portion.

17. The mouthpiece of claim 1, wherein one or more of the walls is a protective wall, and wherein debris external to mouthpiece is subject to being caught by suction and/or by the protective wall.

18. A dental mouthpiece composed of a bendable material, the dental mouthpiece formed in a curve and comprising:

a main body portion at a central part of the curve and comprising a defined pocket having an anterior wall inside the curve, a posterior wall outside the curve, and a side wall in between the anterior wall and the posterior wall, wherein the anterior wall, the posterior wall, and the side wall define an interior portion of the defined pocket;

a cheek retractor portion connected to the main body portion and having a surface that applies pressure when the dental mouthpiece is bent, wherein the pressure is based on resilience of the bendable material;

a suction connector portion for connecting the interior portion of the main body portion to a vacuum suction source, wherein the suction connector portion is connected to the main body portion on an end opposite the cheek retractor; and

a detachable mouth prop comprising a strap configured to fit around the suction connector portion, wherein an external surface of the suction connector portion comprises a notch region corresponding to the strap, and wherein an external surface of the strap is substantially flush with a remaining external surface of the suction connector portion when the strap sits in the notch region.

19. The mouthpiece of claim 18, wherein the side wall includes a plurality of perforations.

20. The mouthpiece of claim 18, wherein the anterior wall and the posterior wall each includes a plurality of perforations.

21. The mouthpiece of claim 18, wherein the anterior wall further includes a slit along a central axis.

8

22. The mouthpiece of claim 18, further comprising a stability bar protruding from an interior surface of the posterior wall, wherein a thickness of the stability bar reinforces stability during bending of the dental mouthpiece.

23. The mouthpiece of claim 18, wherein the main body portion, the cheek retractor portion, and the suction connector portion are injection-molded as one piece.

24. The mouthpiece of claim 18, wherein the material is an autoclavable silicone-based material.

25. The mouthpiece of claim 18, further comprising a bridge structure protruding from an interior surface of the posterior wall, the protruding bridge structure comprising a plurality of spaced contact points that keep the anterior wall separated from the posterior wall during suction.

26. The mouthpiece of claim 25, wherein the bridge structure protrudes from the interior surface of the posterior wall in a wave shape, and wherein the contact points are at crests of the wave shape.

27. The mouthpiece of claim 26, wherein troughs of the wave shape allow suction through the bridge structure.

28. The mouthpiece of claim 18, wherein the suction connector portion comprises an internal stop to assist in positioning of the vacuum suction source or a vacuum adapter.

29. The mouthpiece of claim 18, wherein the strap and other portions of the mouth prop are injection-molded as a single piece.

30. The mouthpiece of claim 18, wherein the suction connector portion further comprises an external plug protrusion corresponding to an opening in the mouth prop.

31. The mouthpiece of claim 30, wherein the plug protrusion fits into the opening to provide additional crush-resistance and decreased compressibility.

32. The mouthpiece of claim 18, wherein the suction connector portion comprises a cutout corresponding to a protrusion on a vacuum adapter for an interlocking fit.

33. The mouthpiece of claim 18, wherein the anterior wall and the posterior wall have different thicknesses.

34. The mouthpiece of claim 18, wherein the main body portion comprises:

a base portion connected to the suction connector portion at a first end,

a cheek retractor connector portion connected to a second end of the base portion, the second end opposite the first end of the base portion, wherein the cheek retractor connector portion is narrower than the base portion, and the cheek retractor connects to main body portion at the cheek retractor connector portion.

35. The mouthpiece of claim 18, wherein one or more of the walls is a protective wall, and wherein debris external to mouthpiece is subject to being caught by suction and/or by the protective wall.

\* \* \* \* \*