

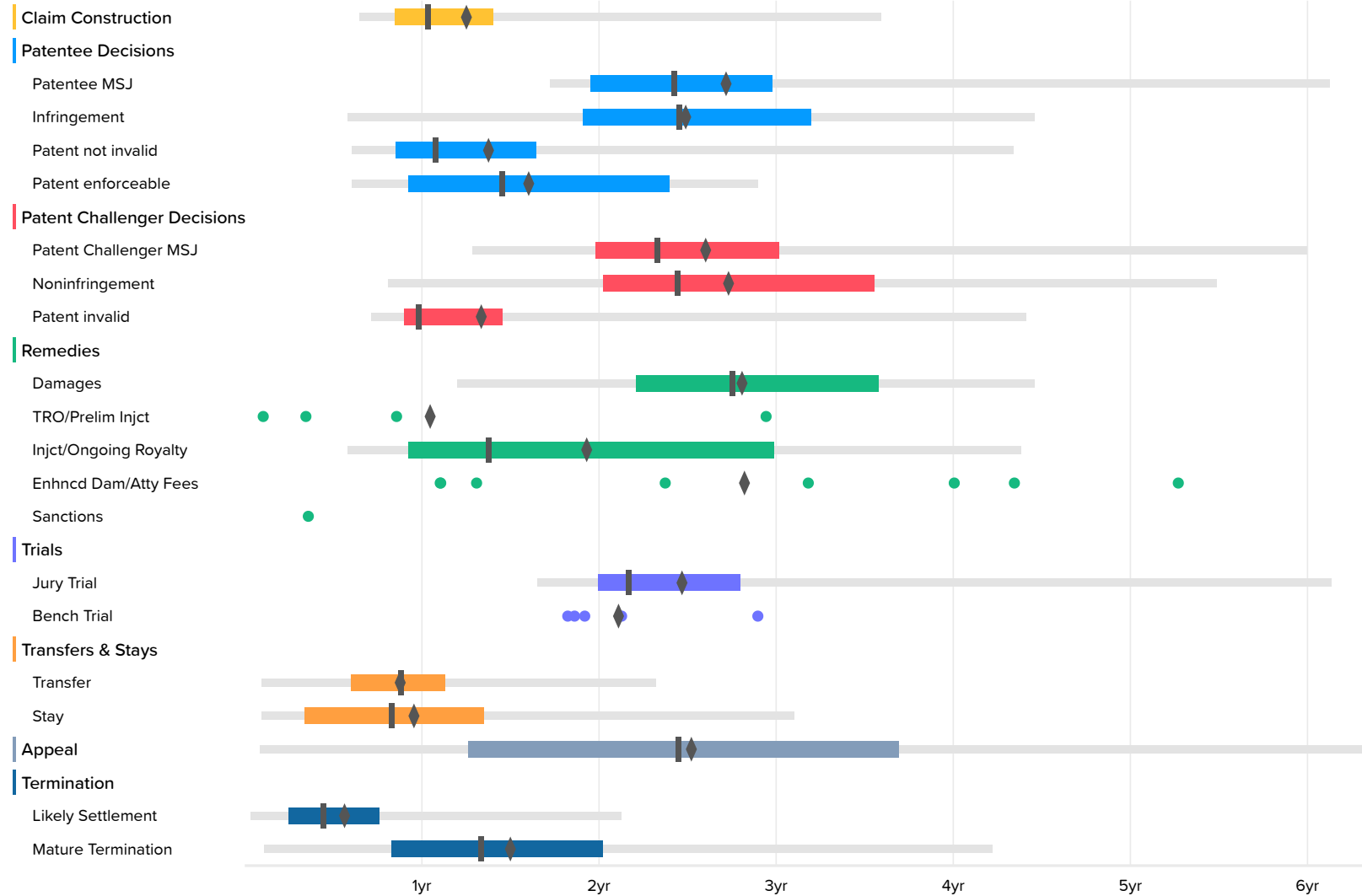
6/16/25, 7:01 AM

Time to Milestones Search

Time to Milestones

Judges: Alan D. Albright Case Filing Date: On or After Jan. 1st, 2008

U.S. District Courts (3119 cases)



U.S. District Courts

	Occurrences	Minimum	2nd Percentile	First Quartile	Median	Third Quartile	98th Percentile	Maximum	Average
Claim Construction	364	0.1	7.7	10.2	12.4	16.8	43.0	65.4	15.2
Patentee MSJ	35	20.0	20.7	23.4	29.0	35.7	73.3	73.3	32.7
Infringement	38	5.2	7.0	22.9	29.4	38.3	53.4	53.4	30.0
Patent not invalid	317	3.4	7.2	10.2	12.9	19.7	52.0	60.0	16.7
Patent enforceable	12	5.2	7.2	11.0	17.4	28.7	34.7	34.7	19.4
Patent Challenger MSJ	68	7.9	15.4	23.7	27.9	36.1	71.8	73.3	31.3
Noninfringement	54	9.6	9.7	24.2	29.3	42.6	65.7	73.3	32.9
Patent invalid	108	-8.9	8.5	10.8	11.8	17.4	52.9	60.0	16.2
Damages	30	14.3	14.4	26.4	33.0	42.9	53.4	53.4	33.8
TRO/Prelim Injct	4	1.2			7.2			35.2	12.7
Injct/Ongoing Royalty	17	5.2	7.0	11.0	16.5	35.8	52.5	52.5	23.3
Enhncd Dam/Atty Fees	8	13.2			33.3			63.1	34.0
Sanctions	1	4.3						4.3	4.3
Jury Trial	47	19.7	19.8	23.9	25.9	33.5	73.4	73.4	29.7
Bench Trial	5	21.8			23.0			34.7	25.5
Transfer	335	0.2	1.2	7.2	10.6	13.5	27.8	46.8	10.7
Stay	334	0.2	1.1	4.0	10.0	16.2	37.1	53.1	11.6
Appeal	49	1.0	1.0	15.1	29.3	44.2	75.8	75.8	30.4
Likely Settlement	2044	0.0	0.4	3.0	5.3	9.1	25.4	49.3	6.9
Mature Termination	802	0.2	1.3	9.9	16.0	24.2	50.5	87.4	18.1