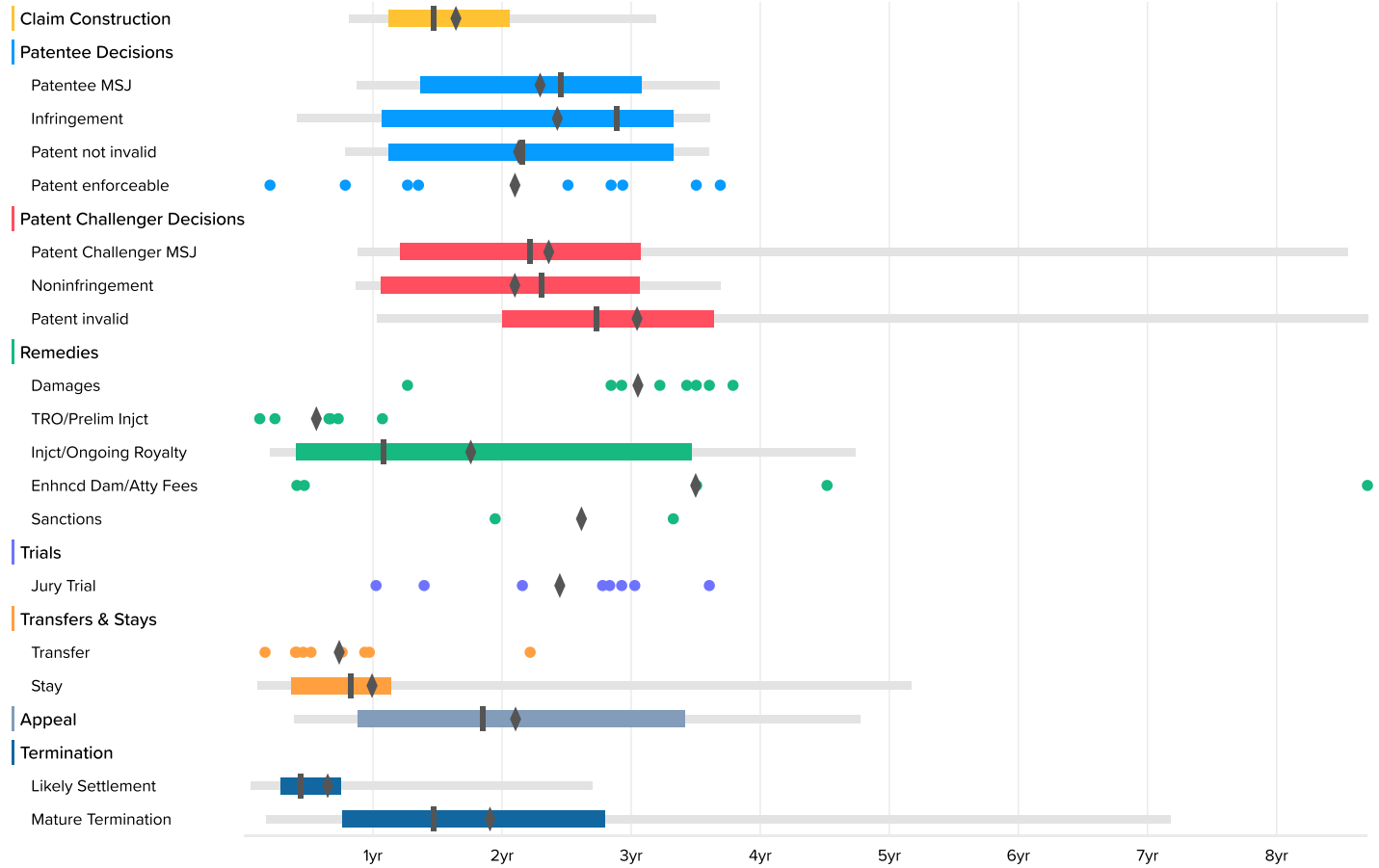


### Time to Milestones

Courts: Wisconsin Eastern District (all districts) Case Filing Date: On or After Jan. 1st, 2008

#### U.S. District Courts (302 cases)



#### U.S. District Courts

	Occurrences	Minimum	2nd Percentile	First Quartile	Median	Third Quartile	98th Percentile	Maximum	Average
Claim Construction	31	5.8	9.8	13.4	17.6	24.6	38.3	38.3	19.9
Patentee MSJ	17	10.3	10.5	16.3	29.4	36.8	44.2	44.2	27.7
Infringement	14	4.8	4.9	12.8	34.6	39.8	43.2	43.2	29.3
Patent not invalid	14	2.4	9.4	13.4	25.8	39.8	43.2	43.2	25.7
Patent enforceable	9	2.4			30.1			44.2	25.4
Patent Challenger MSJ	26	10.3	10.5	14.5	26.5	36.8	102.4	102.4	28.5
Noninfringement	18	4.8	10.3	12.7	27.6	36.7	44.2	44.2	25.4
Patent invalid	12	10.6	12.3	24.0	32.7	43.6	104.2	104.2	36.7
Damages	8	15.2			39.8			45.4	36.8
TRO/Prelim Injct	6	1.5			8.0			12.9	7.0
Injct/Ongoing Royalty	14	2.0	2.4	4.9	12.9	41.5	56.7	56.7	21.3
Enhncd Dam/Atty Fees	5	4.9			42.0			104.2	42.2
Sanctions	2	23.3			31.6			39.8	31.6
Jury Trial	8	12.3			33.6			43.2	29.6
Transfer	9	2.0			6.2			26.6	9.1
Stay	40	0.7	1.2	4.4	9.9	13.6	61.9	61.9	12.1
Appeal	22	3.5	4.6	10.5	22.2	40.9	57.2	57.2	25.5
Likely Settlement	207		0.7	3.4	5.3	9.0	32.4	139.3	8.0
Mature Termination	87	1.8	2.0	9.1	17.6	33.4	85.9	102.4	23.1