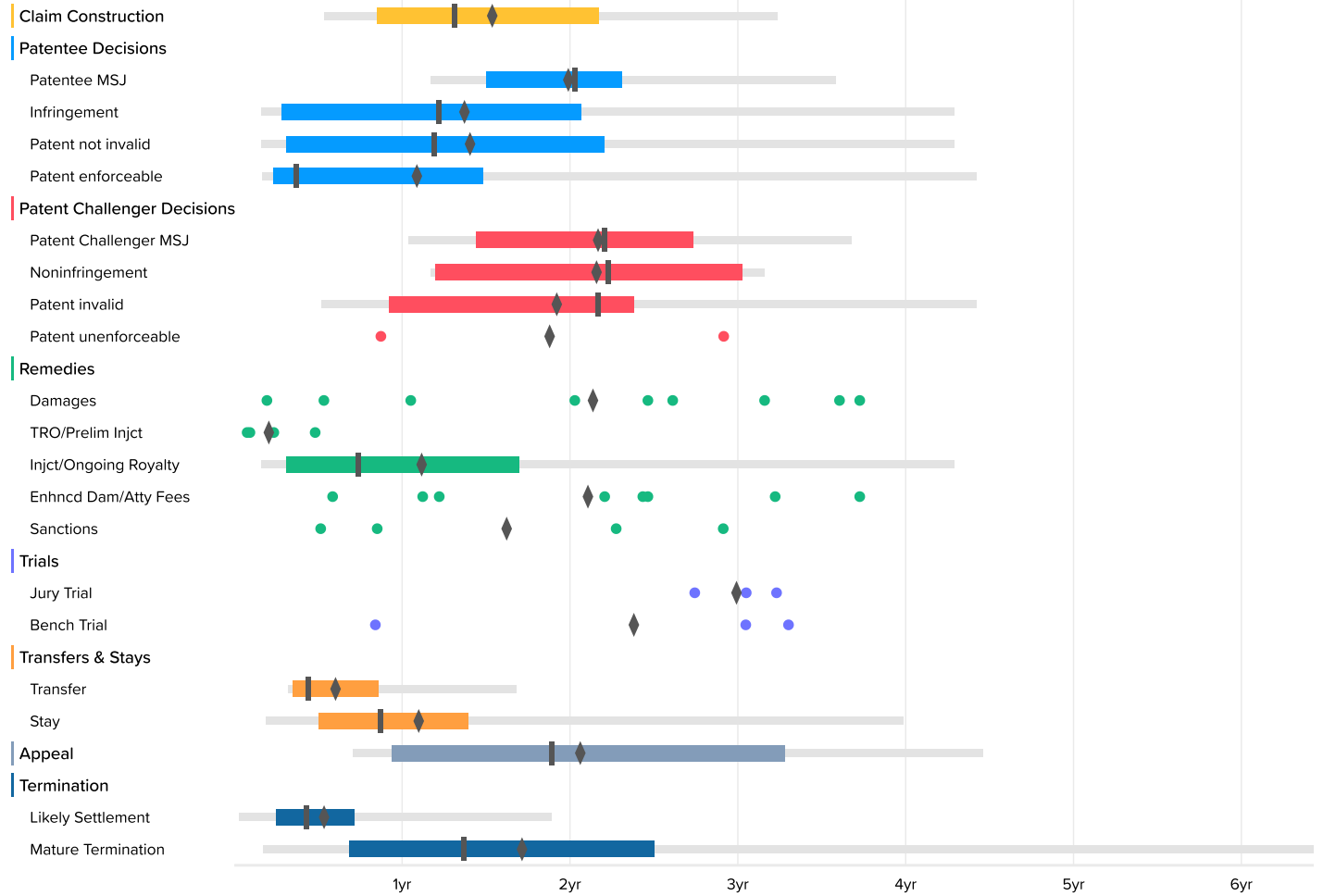


### Time to Milestones

Courts: Arizona District (all districts) Case Filing Date: On or After Jan. 1st, 2008

U.S. District Courts (392 cases)



## U.S. District Courts

	Occurrences	Minimum	2nd Percentile	First Quartile	Median	Third Quartile	98th Percentile	Maximum	Average
Claim Construction	31	1.8	6.4	10.2	15.7	26.0	38.8	38.8	18.6
Patentee MSJ	13	10.1	14.0	18.0	24.3	27.7	42.9	42.9	24.0
Infringement	26	1.1	2.0	3.4	14.6	24.7	51.4	51.4	16.6
Patent not invalid	29	1.1	2.0	3.7	14.3	26.4	51.4	51.4	17.0
Patent enforceable	16	1.1	2.0	2.8	4.4	17.7	53.0	53.0	13.2
Patent Challenger MSJ	22	10.1	12.4	17.2	26.4	32.7	44.0	44.0	26.1
Noninfringement	10	10.1	14.0	14.4	26.7	36.3	37.8	37.8	26.0
Patent invalid	15	4.4	6.2	11.0	26.0	28.5	53.0	53.0	23.2
Patent unenforceable	2	10.5			22.7			34.9	22.7
Damages	9	2.3			29.5			44.6	25.8
TRO/Prelim Injct	4	0.9			2.0			5.8	2.7
Injct/Ongoing Royalty	34	1.1	2.0	3.7	8.8	20.3	51.4	51.4	13.6
Enhncd Dam/Atty Fees	8	7.0			27.8			44.6	25.4
Sanctions	4	6.2			18.7			34.9	19.6
Jury Trial	3	32.9			36.5			38.7	36.0
Bench Trial	3	10.1			36.5			39.5	28.7
Transfer	19	1.9	3.9	4.2	5.3	10.3	20.1	20.1	7.4
Stay	60	1.4	2.2	6.0	10.4	16.7	47.7	54.8	13.3
Appeal	22	4.6	8.5	11.3	22.6	39.3	53.4	53.4	24.9
Likely Settlement	246	0.0	0.4	3.0	5.2	8.5	22.7	33.5	6.6
Mature Termination	129	1.1	2.1	8.2	16.4	30.0	77.0	84.0	20.7