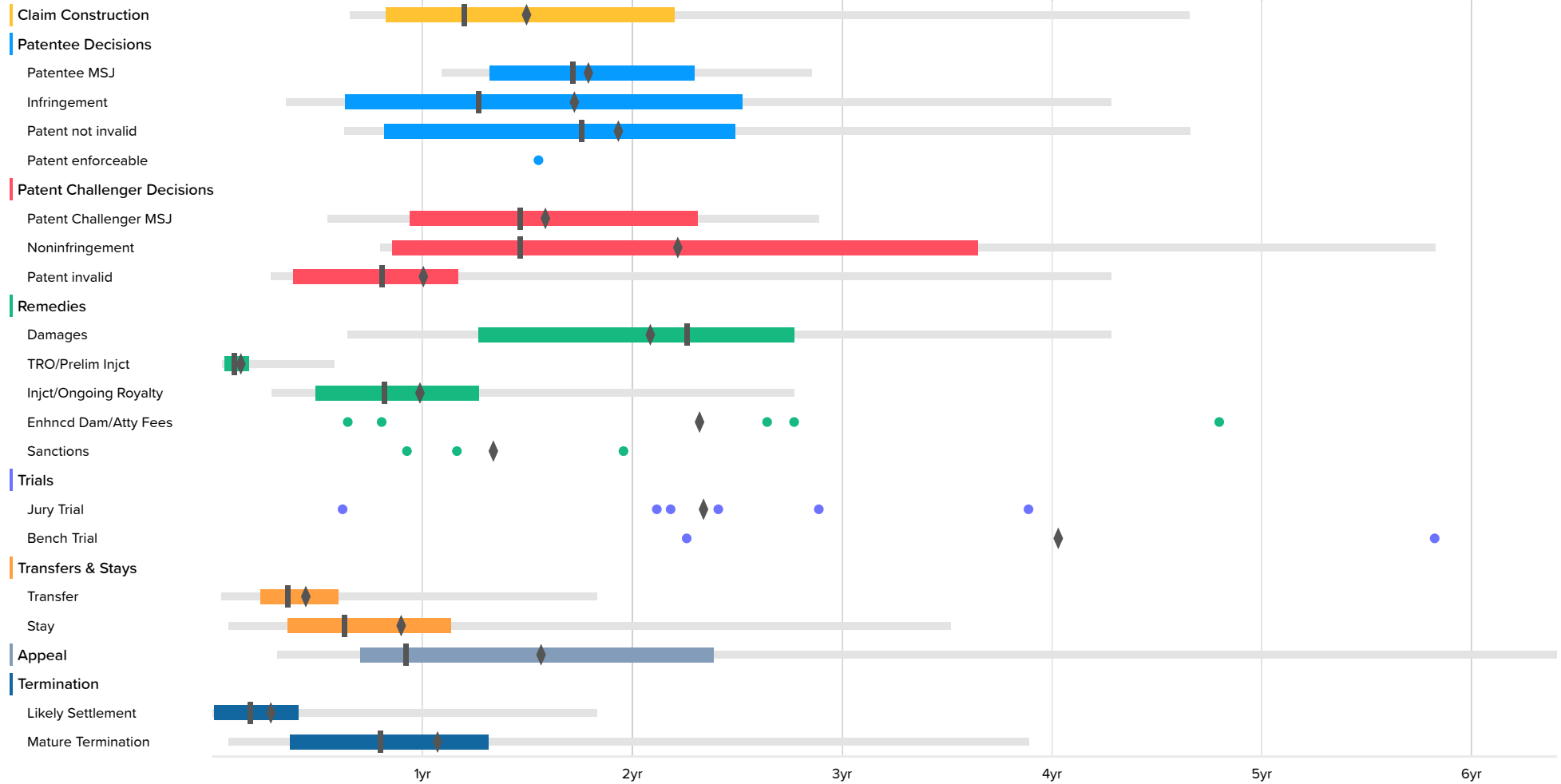


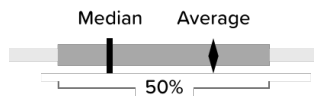
# Time to Milestones

Courts: Virginia Eastern District (all districts) Case Filing Date: On or After Jan. 1st, 2015

U.S. District Courts (456 cases)



The milestones shown in this chart are based on Docket Navigator's classification of orders matching the search criteria specified to generate the report. Each box plot shows the time between the filing of the complaint and the named milestone. The left and right ends of the box labeled 50% are respectively the first- and third-quartiles. The lighter line shows events between the 2nd and 98th percentile. The remaining points are outliers, represent at most 4% of the data, and are not shown, however, the true minimum and maximum are included in the accompanying table and the mean includes outliers. Fewer than ten events occurring in a category are shown as dots instead of a box plot.



*Amazon v. Audio Pod*  
 US Patent 8,738,740  
 Amazon EX-1113

U.S. District Courts

	Occurrences	Minimum	2nd Percentile	First Quartile	Median	Third Quartile	98th Percentile	Maximum	Average
Claim Construction	29	7.6	7.8	9.9	14.4	26.4	55.8	55.8	18.0
Patentee MSJ	12	9.7	13.0	15.8	20.6	27.5	34.2	34.2	21.6
Infringement	13	1.7	4.2	7.5	15.2	30.2	51.3	51.3	20.8
Patent not invalid	24	6.4	7.5	9.8	21.0	29.8	55.8	55.8	23.3
Patent enforceable	1	18.6						18.6	18.6
Patent Challenger MSJ	19	2.3	6.6	11.2	17.5	27.7	34.6	34.6	19.1
Noninfringement	17	3.0	9.5	10.2	17.5	43.7	69.8	69.8	26.7
Patent invalid	30	3.0	3.3	4.6	9.7	14.0	51.3	51.3	12.2
Damages	11	4.2	7.7	15.2	27.0	33.2	51.3	51.3	25.1
TRO/Prelim Injct	14	0.5	0.5	0.7	1.2	2.1	6.9	6.9	1.7
Injct/Ongoing Royalty	22	1.7	3.4	5.9	9.8	15.2	33.2	33.2	12.0
Enhncd Dam/Atty Fees	5	7.7			31.6			57.4	27.9
Sanctions	3	11.1			13.9			23.4	16.2
Jury Trial	6	7.4			27.5			46.6	28.1
Bench Trial	2	27.0			48.4			69.7	48.4
Transfer	43	0.3	0.5	2.7	4.3	7.1	21.9	21.9	5.4
Stay	57	0.9	0.9	4.3	7.5	13.6	42.1	63.6	10.9
Appeal	29	2.4	3.7	8.4	11.0	28.6	76.7	76.7	18.9
Likely Settlement	293			0.1	2.2	4.9	21.9	28.8	3.5
Mature Termination	130	0.3	0.9	4.4	9.6	15.7	46.6	65.7	13.0