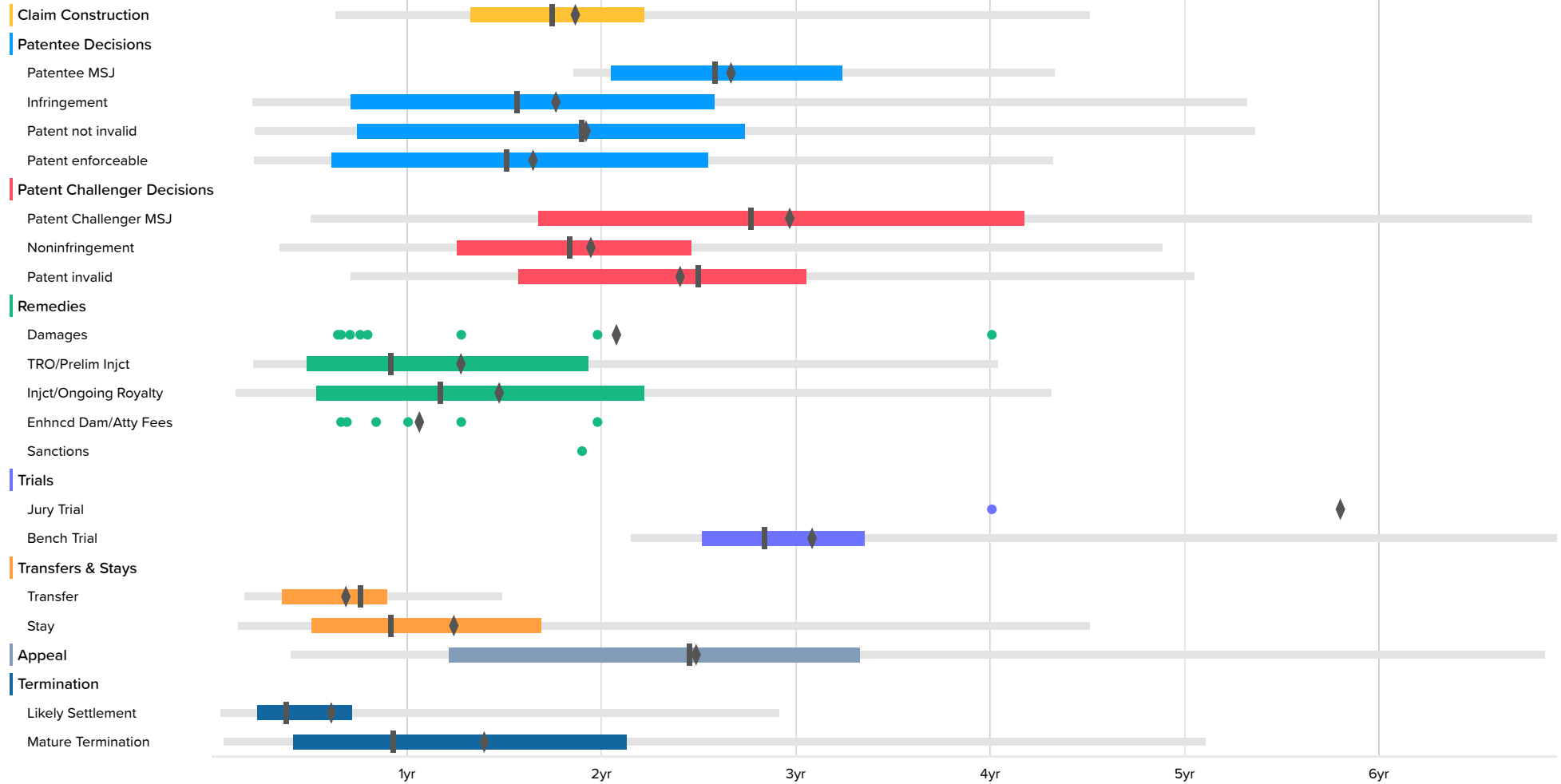


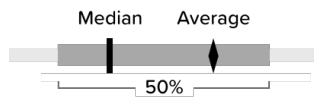
# Time to Milestones

Courts: New Jersey District (all districts) Case Filing Date: On or After Jan. 1st, 2015

U.S. District Courts (1839 cases)



The milestones shown in this chart are based on Docket Navigator's classification of orders matching the search criteria specified to generate the report. Each box plot shows the time between the filing of the complaint and the named milestone. The left and right ends of the box labeled 50% are respectively the first- and third-quartiles. The lighter line shows events between the 2nd and 98th percentile. The remaining points are outliers, represent at most 4% of the data, and are not shown, however, the true minimum and maximum are included in the accompanying table and the mean includes outliers. Fewer than ten events occurring in a category are shown as dots instead of a box plot.



*Amazon v. Audio Pod*  
 US Patent 10,091,266  
**Amazon EX-1114**

U.S. District Courts

	Occurrences	Minimum	2nd Percentile	First Quartile	Median	Third Quartile	98th Percentile	Maximum	Average
Claim Construction	105	4.7	7.6	15.9	20.9	26.6	54.0	63.0	22.5
Patentee MSJ	14	19.0	22.2	24.6	30.9	38.8	51.9	51.9	32.1
Infringement	287	0.9	2.5	8.5	18.7	30.9	63.7	95.5	21.3
Patent not invalid	231	1.0	2.6	8.9	22.7	32.8	64.2	95.5	23.1
Patent enforceable	168	1.0	2.6	7.3	18.1	30.5	51.8	79.6	19.9
Patent Challenger MSJ	21	2.7	6.0	20.1	33.2	50.0	81.3	81.3	35.7
Noninfringement	69	3.5	4.1	15.0	22.0	29.5	58.5	74.5	23.4
Patent invalid	51	5.7	8.5	18.8	29.9	36.6	60.5	81.3	28.9
Damages	9	7.7			9.5			95.5	25.0
TRO/Prelim Injct	20	0.5	2.5	5.8	11.0	23.1	48.4	48.4	15.4
Injct/Ongoing Royalty	426	0.1	1.4	6.4	14.0	26.6	51.7	82.0	17.8
Enhncd Dam/Atty Fees	6	7.9			11.0			23.7	12.9
Sanctions	1	22.8						22.8	22.8
Jury Trial	2	48.0			69.6			91.2	69.6
Bench Trial	26	9.8	25.7	30.1	34.0	40.2	82.8	82.8	37.1
Transfer	27	1.5	2.0	4.3	9.1	10.8	17.8	17.8	8.3
Stay	193	0.2	1.6	6.1	11.0	20.2	54.0	84.0	15.0
Appeal	72	1.1	4.8	14.5	29.4	39.9	82.1	95.5	29.9
Likely Settlement	879	0.0	0.5	2.8	4.5	8.6	34.9	93.9	7.5
Mature Termination	728	0.1	0.7	4.9	11.1	25.5	61.2	95.5	16.9