



US009438381B2

(12) **United States Patent**
Dick et al.

(10) **Patent No.:** **US 9,438,381 B2**
(45) **Date of Patent:** ***Sep. 6, 2016**

(54) **ENHANCED UPLINK OPERATION IN SOFT HANDOVER**

(75) Inventors: **Stephen G. Dick**, Nesconset, NY (US);
Stephen E. Terry, Northport, NY (US);
Guodong Zhang, Syosset, NY (US);
James M. Miller, Verona, NJ (US);
Sung-Hyuk Shin, Northvale, NJ (US)

(73) Assignee: **Signal Trust for Wireless Innovation**,
Wilmington, DE (US)

(*) Notice: Subject to any disclaimer, the term of this
patent is extended or adjusted under 35
U.S.C. 154(b) by 0 days.

This patent is subject to a terminal dis-
claimer.

(21) Appl. No.: **13/236,133**

(22) Filed: **Sep. 19, 2011**

(65) **Prior Publication Data**

US 2012/0002642 A1 Jan. 5, 2012

Related U.S. Application Data

(63) Continuation of application No. 10/925,426, filed on
Aug. 25, 2004, now Pat. No. 8,023,463.

(60) Provisional application No. 60/497,747, filed on Aug.
25, 2003, provisional application No. 60/507,554,
(Continued)

(51) **Int. Cl.**
H04W 4/00 (2009.01)
H04W 72/00 (2009.01)

(Continued)

(52) **U.S. Cl.**
CPC **H04L 1/16** (2013.01); **H04L 1/1812**
(2013.01); **H04L 2001/0092** (2013.01); **H04W**
36/18 (2013.01)

(58) **Field of Classification Search**
CPC ... H04W 48/20; H04W 72/04; H04W 36/00;
H04W 36/005; H04W 36/08; H04W 48/00;
H04W 36/24; H04W 36/30; H04W 36/18;
H04W 36/0044; H04W 24/02; H04W
72/0413

USPC 370/329, 330, 331, 332, 338, 341,
370/216-220, 243-247, 241, 320, 321, 328,
370/335, 442; 714/47, 48, 746-749;
455/450, 452.1, 452.2, 436, 438, 442,
455/524, 525, 68, 69, 561

See application file for complete search history.

(56) **References Cited**

U.S. PATENT DOCUMENTS

5,794,149 A * 8/1998 Hoo 455/438
5,946,320 A 8/1999 Decker et al.

(Continued)

FOREIGN PATENT DOCUMENTS

EP 0977393 A1 2/2000
EP 1 217 777 6/2002

(Continued)

OTHER PUBLICATIONS

3GPP, "3rd Generation Partnership Project; Technical Specification
Group Radio Access Network; Medium Access Control (MAC)
protocol specification (Release 6)," 3GPP TS 25.321 V6.2.0 (Jun.
2004).

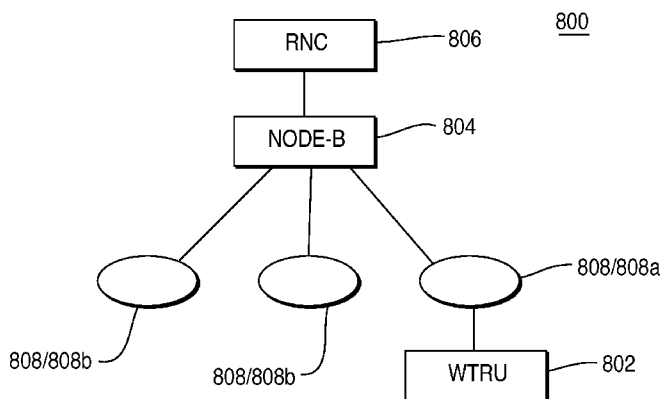
(Continued)

Primary Examiner — Hanh N Nguyen
(74) *Attorney, Agent, or Firm* — Volpe and Koenig, P.C.

(57) **ABSTRACT**

A method and system for an enhanced uplink (EU) operation in
a wireless communication system during soft handover.
The system comprises a wireless transmit/receive unit
(WTRU), at least two Node-Bs, and a radio network
controller (RNC). One Node-B may be designated as a primary
Node-B, and the primary Node-B may control EU operation
during soft handover including uplink scheduling and hybrid
automatic repeat request (H-ARQ). Soft buffer corruption is
avoided during soft handover by controlling H-ARQ by the
primary Node-B. Alternatively, an RNC may control EU
operation during soft handover including H-ARQ. In this
case, an RNC generates final acknowledge/non-acknowl-
edge (ACK/NACK) decision based on the error check
results of the Node-Bs.

25 Claims, 9 Drawing Sheets



Related U.S. Application Data

filed on Oct. 1, 2003, provisional application No. 60/508,797, filed on Oct. 3, 2003, provisional application No. 60/520,207, filed on Nov. 14, 2003, provisional application No. 60/585,174, filed on Jul. 2, 2004.

- (51) **Int. Cl.**
- H04L 1/18* (2006.01)
- H04L 1/16* (2006.01)
- H04L 1/00* (2006.01)
- H04W 36/18* (2009.01)

(56) **References Cited**

U.S. PATENT DOCUMENTS

| | | | | |
|--------------|------|---------|---------------------|---------|
| 6,434,396 | B1 | 8/2002 | Rune | |
| 6,643,813 | B1 | 11/2003 | Johansson et al. | |
| 6,678,249 | B2 | 1/2004 | Toskala et al. | |
| 6,678,523 | B1 * | 1/2004 | Ghosh et al. | 455/442 |
| 6,754,496 | B2 * | 6/2004 | Mohebbi et al. | 455/436 |
| 6,778,830 | B1 | 8/2004 | Oizumi et al. | |
| 6,892,071 | B2 | 5/2005 | Park et al. | |
| 6,907,245 | B2 | 6/2005 | Ohlsson et al. | |
| 6,915,465 | B2 | 7/2005 | Fujiwara et al. | |
| 6,977,888 | B1 | 12/2005 | Frenger et al. | |
| 7,013,143 | B2 | 3/2006 | Love et al. | |
| 7,046,648 | B2 * | 5/2006 | Zhang et al. | 370/331 |
| 7,054,633 | B2 * | 5/2006 | Seo et al. | 455/439 |
| 7,103,729 | B2 | 9/2006 | Altahan et al. | |
| 7,124,350 | B2 | 10/2006 | Chao et al. | |
| 7,158,504 | B2 | 1/2007 | Kadaba et al. | |
| 7,185,256 | B2 | 2/2007 | Miki et al. | |
| 7,206,598 | B2 * | 4/2007 | Attar et al. | 455/522 |
| 7,269,420 | B2 | 9/2007 | Heo et al. | |
| 7,283,508 | B2 | 10/2007 | Choi et al. | |
| 7,315,741 | B2 | 1/2008 | Chun | |
| 7,317,700 | B2 | 1/2008 | Hwang | |
| 7,346,035 | B2 | 3/2008 | Lee et al. | |
| 7,403,513 | B2 | 7/2008 | Lee et al. | |
| 7,414,989 | B2 | 8/2008 | Kuchibhotla et al. | |
| 7,848,290 | B2 * | 12/2010 | Cheng et al. | 370/331 |
| 7,903,610 | B2 * | 3/2011 | Cheng et al. | 370/331 |
| 8,023,463 | B2 * | 9/2011 | Dick et al. | 370/331 |
| 8,130,720 | B2 * | 3/2012 | Zhang et al. | 370/331 |
| 8,457,072 | B2 * | 6/2013 | Zhang et al. | 370/331 |
| 2001/0020285 | A1 | 9/2001 | Fujiwara et al. | |
| 2002/0093937 | A1 | 7/2002 | Kim et al. | |
| 2002/0095635 | A1 | 7/2002 | Wager et al. | |
| 2002/0115467 | A1 | 8/2002 | Hamabe | |
| 2002/0191544 | A1 | 12/2002 | Cheng et al. | |
| 2003/0002470 | A1 | 1/2003 | Park et al. | |
| 2003/0007480 | A1 | 1/2003 | Kim et al. | |
| 2003/0031119 | A1 | 2/2003 | Kim et al. | |
| 2003/0043786 | A1 | 3/2003 | Kall et al. | |
| 2003/0054824 | A1 | 3/2003 | Choi et al. | |
| 2003/0081692 | A1 | 5/2003 | Kwan et al. | |
| 2003/0161284 | A1 | 8/2003 | Chen | |
| 2003/0202500 | A1 | 10/2003 | Ha et al. | |
| 2003/0210668 | A1 | 11/2003 | Malladi et al. | |
| 2004/0004954 | A1 | 1/2004 | Terry et al. | |
| 2004/0072567 | A1 | 4/2004 | Cao et al. | |
| 2004/0085934 | A1 | 5/2004 | Balachandran et al. | |
| 2004/0120306 | A1 | 6/2004 | Wigard et al. | |
| 2004/0160925 | A1 | 8/2004 | Heo et al. | |
| 2004/0202129 | A1 | 10/2004 | Kolding et al. | |
| 2004/0203991 | A1 | 10/2004 | Chen et al. | |
| 2004/0219917 | A1 | 11/2004 | Love et al. | |
| 2004/0219919 | A1 | 11/2004 | Whinnett et al. | |
| 2004/0219920 | A1 | 11/2004 | Love et al. | |
| 2004/0228313 | A1 | 11/2004 | Cheng et al. | |
| 2005/0041694 | A1 | 2/2005 | Liu | |
| 2005/0047354 | A1 | 3/2005 | Zeira et al. | |
| 2005/0048920 | A1 | 3/2005 | Liu | |
| 2005/0083888 | A1 | 4/2005 | Smee et al. | |

| | | | |
|--------------|----|--------|----------------|
| 2006/0045010 | A1 | 3/2006 | Baker et al. |
| 2006/0105796 | A1 | 5/2006 | Malladi et al. |
| 2007/0047501 | A1 | 3/2007 | Usuda et al. |
| 2007/0079207 | A1 | 4/2007 | Seidel et al. |

FOREIGN PATENT DOCUMENTS

| | | |
|----|---------------|-----------|
| FI | wo02101966 | * 12/2002 |
| GB | 2353439 A1 | 2/2001 |
| JP | 2000217139 | 8/2000 |
| JP | 2001128209 A2 | 5/2001 |
| JP | 2003163960 A2 | 6/2003 |
| JP | 2002-009741 | 1/2014 |
| JP | 2003-134180 | 5/2015 |
| KR | 20020095231 A | 12/2002 |
| KR | 2003-0003943 | 1/2003 |
| RU | 2003112283 A | 11/2004 |
| RU | 2005110767 A | 10/2006 |
| WO | 9927740 A1 | 6/1999 |
| WO | 0035226 A1 | 6/2000 |
| WO | 0074263 A | 12/2000 |
| WO | 0201893 A2 | 1/2002 |
| WO | 02/03782 | 5/2002 |
| WO | 02/37572 A2 | 5/2002 |
| WO | 02/47317 | 6/2002 |
| WO | 02/082108 | 10/2002 |
| WO | 02102109 | 12/2002 |
| WO | 03003643 A1 | 1/2003 |
| WO | 03026231 A1 | 3/2003 |
| WO | 03/037027 A1 | 5/2003 |
| WO | 03/047155 | 6/2003 |
| WO | 03053087 A1 | 6/2003 |
| WO | 03067953 A2 | 8/2003 |
| WO | 03088545 A2 | 10/2003 |

OTHER PUBLICATIONS

3GPP, "3rd Generation Partnership Project; Technical Specification Group Radio Access Network; Physical Layer Procedures (FDD) (Release 6)," 3GPP TS 25.214 V6.2.0 (Jun. 2004).

3GPP, "3rd Generation Partnership Project; Technical Specification Group Radio Access Network; Physical Layer Procedures (FDD) (Release 5)," 3GPP TS 25.214 V5.9.0 (Jun. 2004).

3GPP, "3rd Generation Partnership Project; Technical Specification Group Radio Access Network; Physical Layer Procedures (FDD) (Release 5)," 3GPP TS 25.214 V5.5.0 (Jun. 2003).

3GPP, "3rd Generation Partnership Project; Technical Specification Group Radio Access Network; Physical Layer Procedures (FDD) (Release 4)," 3GPP TS 25.214 V4.6.0 (Mar. 2003).

3GPP, "3rd Generation Partnership Project; Technical Specification Group Radio Access Network; Physical Layer Procedures (FDD) (Release 1999)," 3GPP TS 25.214 V3.12.0 (Mar. 2003).

3GPP, "3rd Generation Partnership Project; Technical Specification Group Radio Access Network; Medium Access Control (MAC) protocol specification (Release 1999)," 3GPP TS 25.321 V3.17.0 (Jun. 2004).

3GPP, "3rd Generation Partnership Project; Technical Specification Group Radio Access Network; Medium Access Control (MAC) protocol specification (Release 1999)," 3GPP TS 25.321 V3.15.0 (Mar. 2003).

3GPP, "3rd Generation Partnership Project; Technical Specification Group Radio Access Network; Medium Access Control (MAC) protocol specification (Release 5)," 3GPP TS 25.321 V5.5.0 (Jun. 2003).

3GPP, "3rd Generation Partnership Project; Technical Specification Group Radio Access Network; Medium Access Control (MAC) protocol specification (Release 4)," 3GPP TS 25.321 V4.10.0 (Jun. 2004).

3GPP, "3rd Generation Partnership Project; Technical Specification Group Radio Access Network; Medium Access Control (MAC) protocol specification (Release 4)," 3GPP TS 25.321 V4.8.0 (Mar. 2003).

3GPP, "3rd Generation Partnership Project; Technical Specification Group Radio Access Network; Medium Access Control (MAC) protocol specification (Release 5)," 3GPP TS 25.321 V5.9.0 (Jun. 2004).

(56)

References Cited

OTHER PUBLICATIONS

- 3GPP, "3rd Generation Partnership Project; Technical Specification Group Radio Access Network; High Speed Downlink Packet Access (HSDPA)", Stage 2 (Release 5), 3GPP TS 25.308 V5.5.0 (Mar. 2004).
- 3GPP, "3rd Generation Partnership Project; Technical Specification Group Radio Access Network; Physical channels and mapping of transport channels onto physical channels (FDD) (Release 1999)," 3GPP TS 25.211 V.12.0 (Sep. 2002).
- 3GPP, "3rd Generation Partnership Project; Technical Specification Group Radio Access Network; Physical channels and mapping of transport channels onto physical channels (FDD) (Release 4)," 3GPP TS 25.211 V4.6.0 (Sep. 2002).
- 3GPP, "3rd Generation Partnership Project; Technical Specification Group Radio Access Network; Physical channels and mapping of transport channels onto physical channels (FDD) (Release 5)," 3GPP TS 25.211 V5.5.0 (Sep. 2003).
- 3GPP, "3rd Generation Partnership Project; Technical Specification Group Radio Access Network; Physical channels and mapping of transport channels onto physical channels (FDD) (Release 5)," 3GPP TS 25.211 V5.4.0 (Jun. 2003).
- 3GPP, "3rd Generation Partnership Project; Technical Specification Group Radio Access Network; Physical channels and mapping of transport channels onto physical channels (FDD) (Release 6)," 3GPP TS 25.211 V6.1.0 (Jun. 2004).
- 3GPP2 C.20003-C, "Medium Access Control (MAC) Standard for cdma2000 Spread Spectrum Systems", 3rd Generation Partnership Project 2 "3GPP2", Version 2.0, Release C, Aug. 2004.
- 3GPP2 C.S0002-C, "Physical Layer Standard for cdma2000 Spread Spectrum Systems", 3rd Generation Partnership Project 2 "3GPP2", Version 2.0, Revision C, Jul. 23, 2004.
- 3GPP2 C.S0004-C, "Signaling Link Access Control (LAC) Standard for cdma2000 Spread Spectrum Systems", 3rd Generation Partnership Project 2 "3GPP2", Version 2.0, Revision C, Jul. 23, 2004.
- 3GPP2 C.S0005-C, "Upper Layer (Layer 3) Signaling Standard for cdma2000 Spread Spectrum Systems", 3rd Generation Partnership Project 2 "3GPP2", Version 2.0, Revision c, Jul. 23, 2004.
- Heck et al., "Diversity Effects on the Soft Handover Gain in UMTS Networks," Proceedings of the IEEE Vehicular Technology Conference, vol. 2, pp. 1269-1273 (Sep. 2002).
- R1-030733, "HARQ overhead issues", Nokia, TSG-RAN1 #33.
- R1-030765, "HARQ performance in soft handover", Samsung, TSG RAN1 #33.
- R1-030803, "HARQ operation during Soft Handover", Panasonic, TSG RAN1 #33.
- R1-03095, "Feasibility Study for Enhanced Uplink for UTRA FDD", 3GPP TR 25.896, V.0.4.2.
- 3GPP, "3rd Generation Partnership Project; Technical Specification Group Radio Access Network; Requirements for support of radio resource management (FDD) (Release 5)," 3GPP TS 25.133 V5.11.0 (Jun. 2004).
- 3GPP, "3rd Generation Partnership Project; Technical Specification Group Radio Access Network; Requirements for support of radio resource management (FDD) (Release 5)," 3GPP TS 25.133 V5.7.0 (Jun. 2003).
- 3GPP, "3rd Generation Partnership Project; Technical Specification Group Radio Access Network; Requirements for support of radio resource management (FDD) (Release 4)," 3GPP TS 25.133 V4.12.0 (Mar. 2004).
- 3GPP, "3rd Generation Partnership Project; Technical Specification Group Radio Access Network; Requirements for support of radio resource management (FDD) (Release 4)," 3GPP TS 25.133 V4.9.0 (Jun. 2003).
- 3GPP, "3rd Generation Partnership Project; Technical Specification Group Radio Access Network; Requirements for support of radio resource management (FDD) (Release 1999)," 3GPP TS 25.133 V3.18.0 (Jun. 2004).
- 3GPP, "3rd Generation Partnership Project; Technical Specification Group Radio Access Network; Requirements for support of radio resource management (FDD) (Release 1999)," 3GPP TS 25.133 V3.14.0 (Jun. 2003).
- 3GPP TS 25.308 V5.4.0, 3rd Generation Partnership Project; Technical Specification Group Radio Access Network; "High Speed Downlink Packet Access (HSDPA)"; Stage 2 (Release 5); Mar. 2003.
- 3GPP TS 25.308 V6.1.0, 3rd Generation Partnership Project; Technical Specification Group Radio Access Network; "High Speed Downlink Packet Access (HSDPA)"; Stage 2 (Release 6); Mar. 2004.
- 3GPP TS 25.133 V6.2.0, 3rd Generation Partnership Project; Technical Specification Group Radio Access Network; "Requirements for Support of Radio Resource Management" (FDD); (Release 6); Jun. 2003.
- 3GPP TS 25.133 V6.6.0, 3rd Generation Partnership Project; Technical Specification Group Radio Access Network; "Requirements for Support of Radio Resource Management" (FDD); (Release 6); Jun. 2004.
- 3GPP TS 25.309 V0.2.0, 3rd Generation Partnership Project; Technical Specification Group Radio Access Network; "FDD Enhanced Uplink"; Stage 2 (Release 6); Jun. 2004.
- 3GPP, "3rd Generation Partnership Project; Technical Specification Group Radio Access Network; High Speed Downlink Packet Access (HSDPA)"; Stage 2 (Release 5), 3GPP TS 25.308 V5.5.0 (Mar. 2004).
- 3GPP, "3rd Generation Partnership Project; Technical Specification Group Radio Access Network; Physical channels and mapping of transport channels onto physical channels (FDD) (Release 1999)," 3GPP TS 25.211 V3.12.0 (Sep. 2002).
- 3GPP, "3rd Generation Partnership Project; Technical Specification Group Radio Access Network; Physical channels and mapping of transport channels onto physical channels (FDD) (Release 4)," 3GPP TS 25.211 V4.6.0 (Sep. 2002).
- 3GPP, "3rd Generation Partnership Project; Technical Specification Group Radio Access Network; Feasibility Study for Enhanced Uplink for UTRA FDD (Release 6)," 3GPP TR 25.896 V6.0.0 (Mar. 2004).
- Interdigital, "Performance Analysis of HARQ in Soft Handover," 3GPP TSG-RAN WG1 #34 meeting, R1-030979 (Oct. 6-10, 2003).
- 3rd Generation Partnership Project; Technical Specification Group Radio Access Network; Feasibility Study for Enhanced Uplink for UTRA FDD; (Release 6), 3GPP TR 25.896 V1.0.2 (Oct. 2003).
- 3GPP, "3rd Generation Partnership Project; Technical Specification Group Radio Access Network; Multiplexing and channel coding (FDD) (Release 1999)," 3GPP TS 25.212 V3.11.0 (Sep. 2002).
- 3GPP, "3rd Generation Partnership Project; Technical Specification Group Radio Access Network; Multiplexing and channel coding (FDD) (Release 4)," 3GPP TS 25.212 V4.6.0 (Sep. 2002).
- 3GPP, "3rd Generation Partnership Project; Technical Specification Group Radio Access Network; Multiplexing and channel coding (FDD) (Release 5)," 3GPP TS 25.212 V5.9.0 (Jun. 2004).
- 3GPP, "3rd Generation Partnership Project; Technical Specification Group Radio Access Network; Multiplexing and channel coding (FDD) (Release 6)," 3GPP TS 25.212 V6.2.0 (Jun. 2004).
- 3GPP, "3rd Generation Partnership Project; Technical Specification Group Radio Access Network; Multiplexing and channel coding (FDD) (Release 5)," 3GPP TS 25.212 V5.5.0 (Jun. 2003).
- 3GPP, "3rd Generation Partnership Project; Technical Specification Group Radio Access Network; Radio Resource Control (RRC) protocol specification (Release 1999)," 3GPP TS 25.331 V3.15.0 (Jun. 2003).
- 3GPP, "3rd Generation Partnership Project; Technical Specification Group Radio Access Network; Radio Resource Control (RRC) protocol specification (Release 1999)," 3GPP TS 25.331 V3.19.0 (Jun. 2004).
- 3GPP, "3rd Generation Partnership Project; Technical Specification Group Radio Access Network; Radio Resource Control (RRC); Protocol Specification (Release 4)," 3GPP TS 25.331 V4.10.0 (Jun. 2003).

(56)

References Cited

OTHER PUBLICATIONS

3GPP, "3rd Generation Partnership Project; Technical Specification Group Radio Access Network; Radio Resource Control (RRC); Protocol Specification (Release 4)," 3GPP TS 25.331 V4.14.0 (Jun. 2004).

3GPP, "3rd Generation Partnership Project; Technical Specification Group Radio Access Network; Radio Resource Control (RRC); Protocol Specification (Release 5)," 3GPP TS 25.331 V5.5.0 (Jun. 2003).

3GPP, "3rd Generation Partnership Project; Technical Specification Group Radio Access Network; Radio Resource Control (RRC); Protocol Specification (Release 5)," 3GPP TS 25.331 V5.9.0 (Jun. 2004).

3GPP, "3rd Generation Partnership Project; Technical Specification Group Radio Access Network; Radio Resource Control (RRC); Protocol Specification (Release 6)," 3GPP TS 25.331 V6.2.0 (Jun. 2004).

3GPP, "3rd Generation Partnership Project; Technical Specification Group Radio Access Network; UTRAN Iub interface NBAP signaling (Release 1999)," 3GPP TS 25.433 V3.14.1 (Jun. 2004).

3GPP, "3rd Generation Partnership Project; Technical Specification Group Radio Access Network; UTRAN Iub interface NBAP signaling (Release 1999)," 3GPP TS 25.433 V3.13.0 (Mar. 2003).

3GPP, "3rd Generation Partnership Project; Technical Specification Group Radio Access Network; UTRAN Iub interface NBAP signaling (Release 4)," 3GPP TS 25.433 V4.9.0 (Jun. 2003).

3GPP, "3rd Generation Partnership Project; Technical Specification Group Radio Access Network; UTRAN Iub interface NBAP signaling (Release 4)," 3GPP TS 25.433 V4.12.0 (Mar. 2004).

3GPP, "3rd Generation Partnership Project; Technical Specification Group Radio Access Network; UTRAN Iub interface NBAP signaling (Release 5)," 3GPP TS 25.433 V5.5.0 (Jun. 2003).

3GPP, "3rd Generation Partnership Project; Technical Specification Group Radio Access Network; UTRAN Iub interface NBAP signaling (Release 5)," 3GPP TS 25.433 V5.9.0 (Jun. 2004).

3GPP, "3rd Generation Partnership Project; Technical Specification Group Radio Access Network; UTRAN Iub interface NBAP signaling (Release 6)," 3GPP TS 25.433 V6.2.0 (Jun. 2004).

Panasonic, HARQ Operation During Soft Handover, 3GPP TSG-RAN WG1 Meeting #33 R1-030802, 3GPP, Aug. 25, 2003.

Samsung Electronics, HARQ Structure, 3GPP TSG-RAN WG1 #31 Meeting R1-030247, Feb. 17, 2003.

3rd Generation Partnership Project; Technical Specification Group Radio Access Network: Feasibility Study for Enhanced Uplink for UTRA FDD; (Release 6), 3GPP TR 25.896 V0.2.1 (Feb. 2003) R1-030372, Feb. 26, 2003, p. 14-17.

Samsung, Transport Channel Multiplexing Options Considering SHO, 3GPP TSG RAN WG1 #33 R1-030767, Aug. 20, 2003.

Motorola, "Improvements to Site Selection Diversity Transmission (SSDT)", TSG-RAN Working Group 1 Meeting #3, Mar. 22-26, 1999, Stockholm, Sweden, pp. 1-5.

* cited by examiner

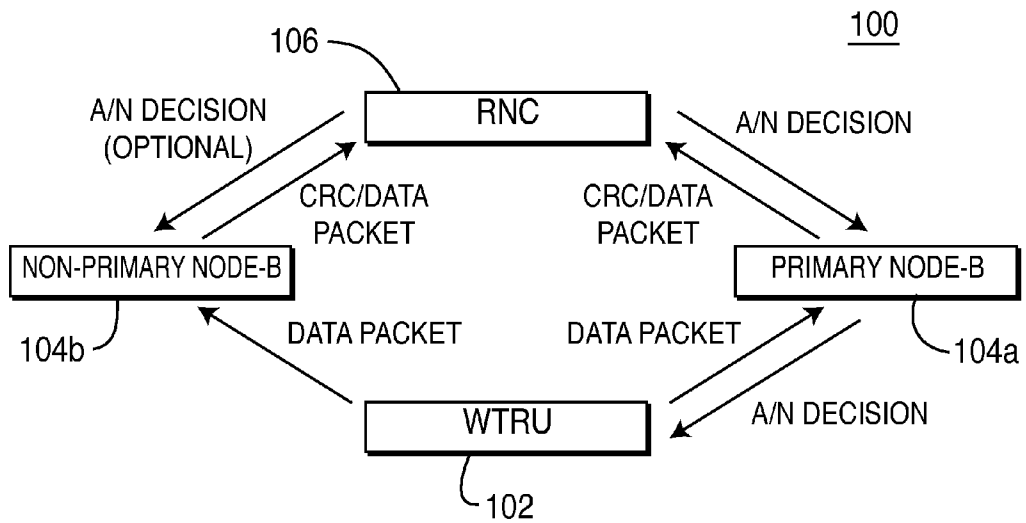


FIG. 1A

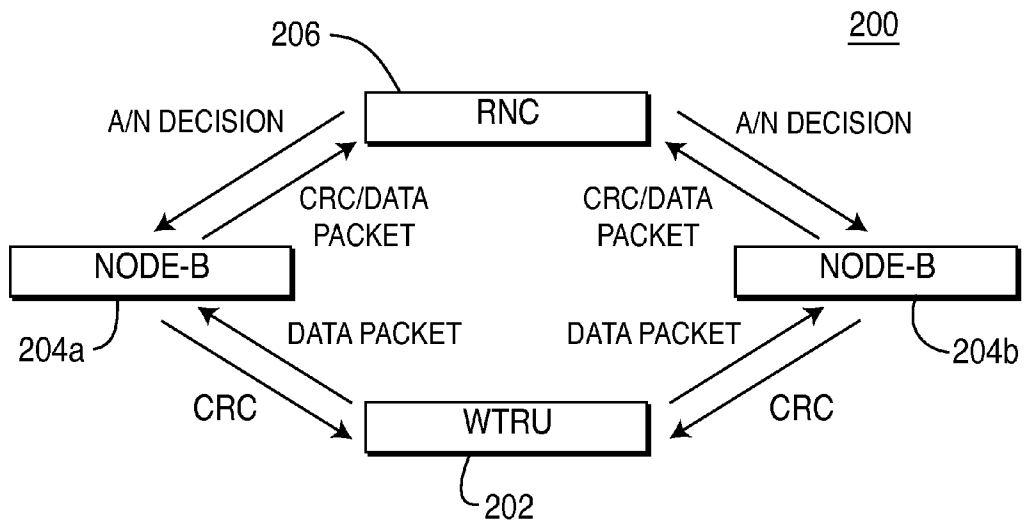


FIG. 2A

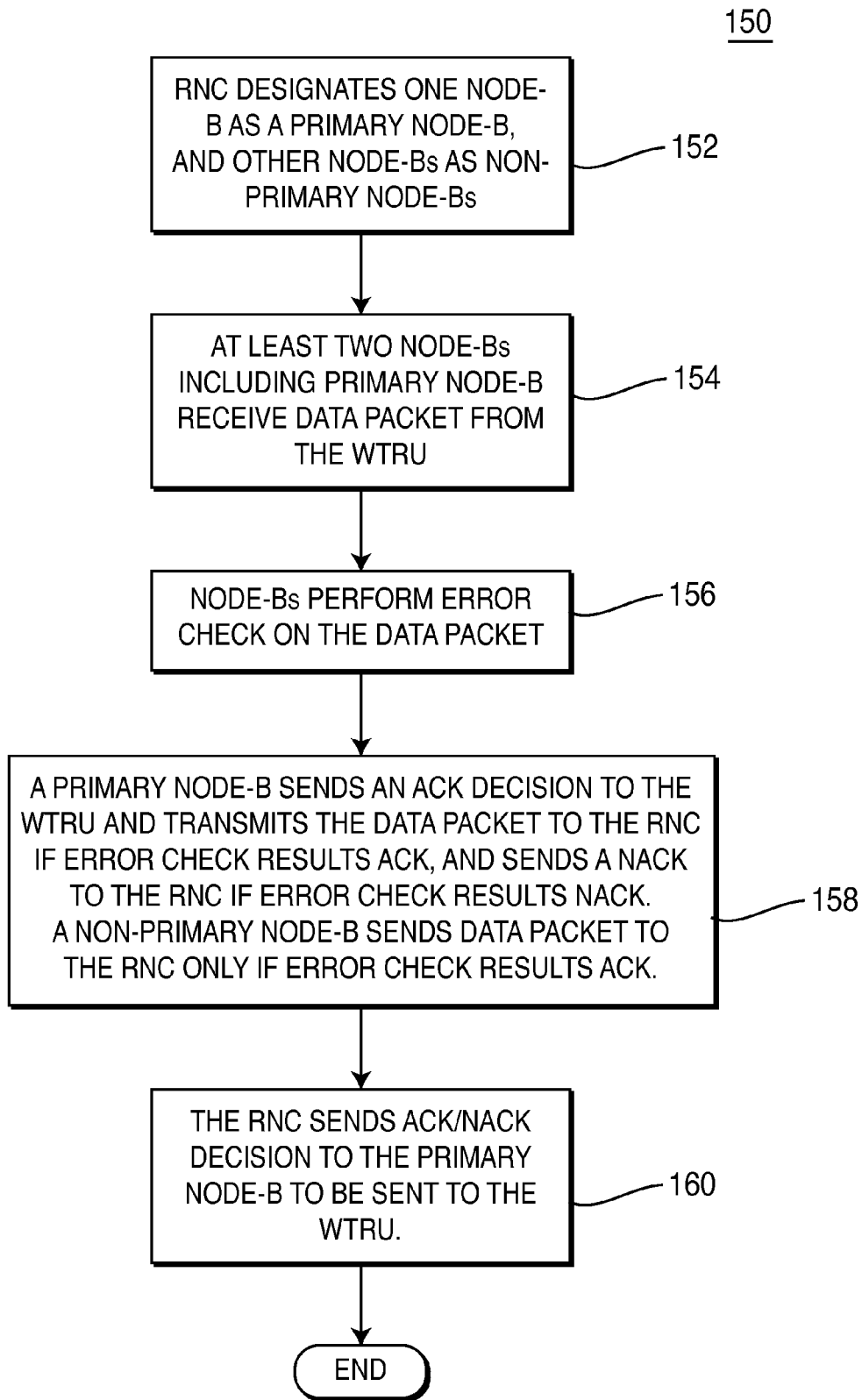


FIG. 1B

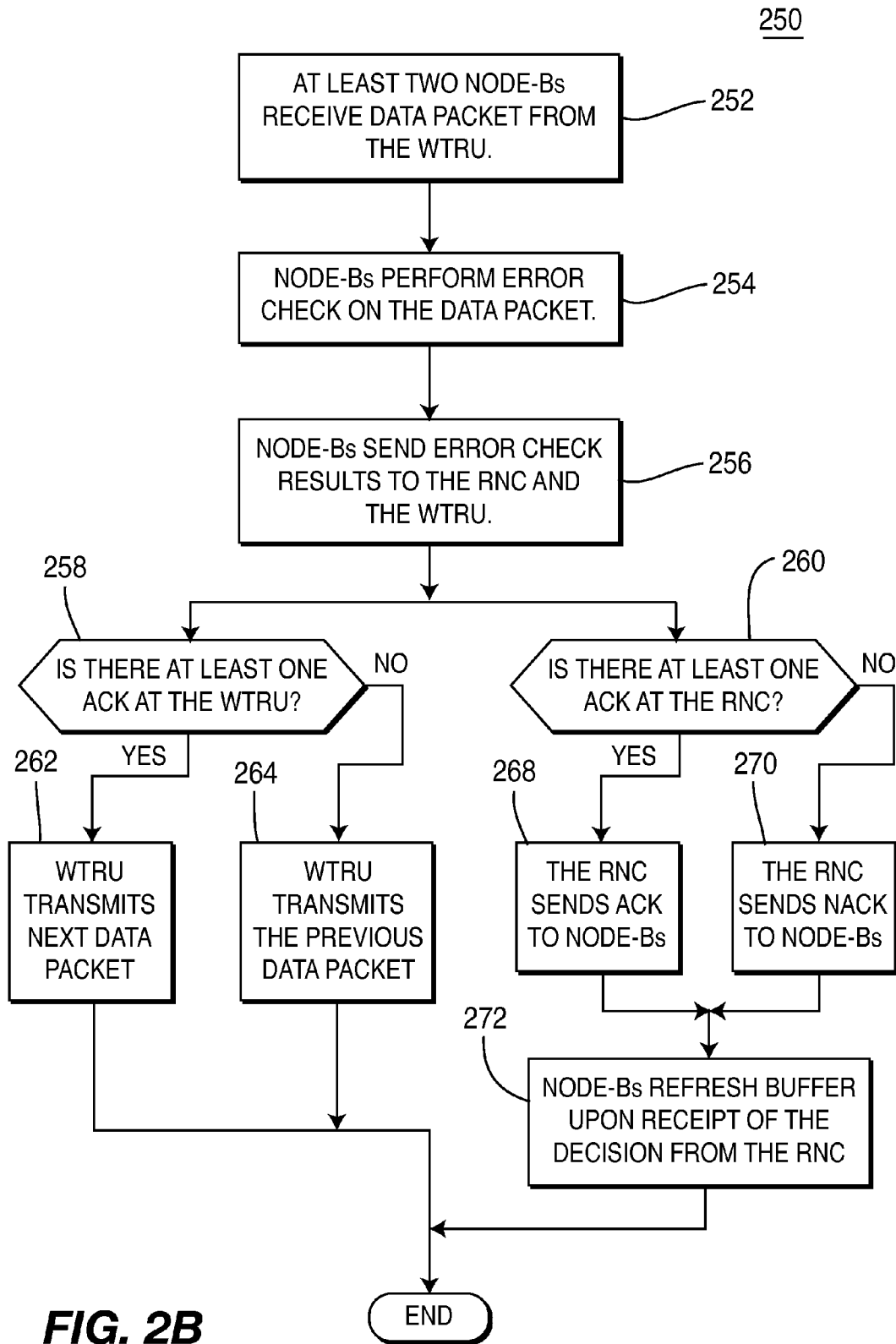


FIG. 2B

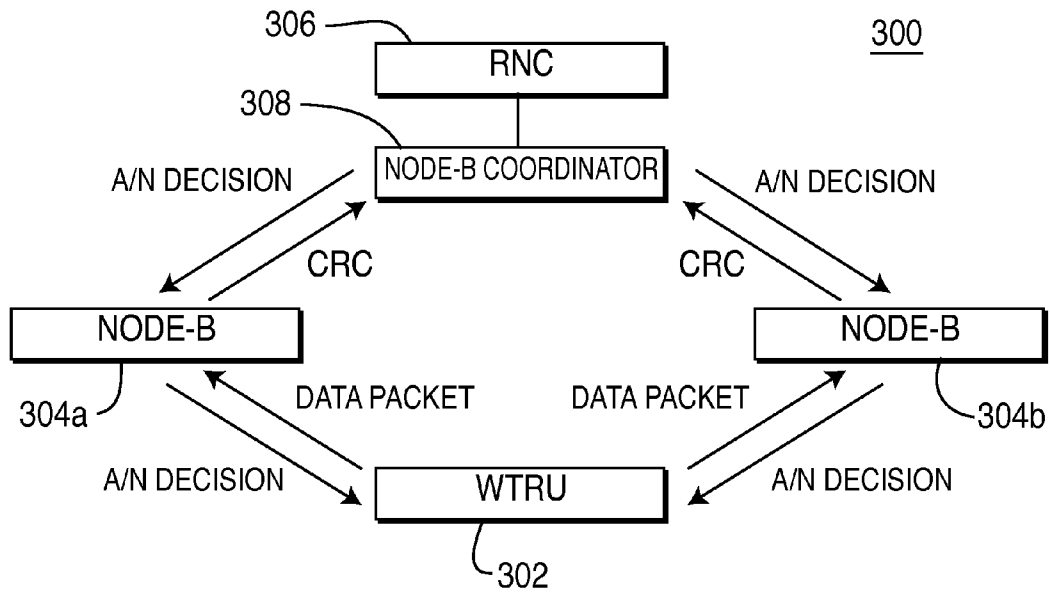


FIG. 3A

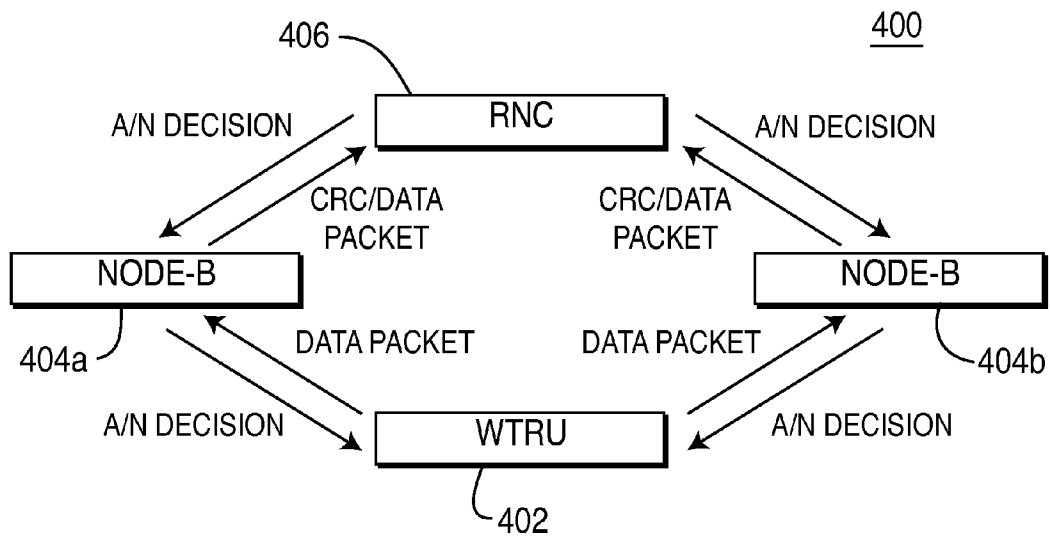


FIG. 4A

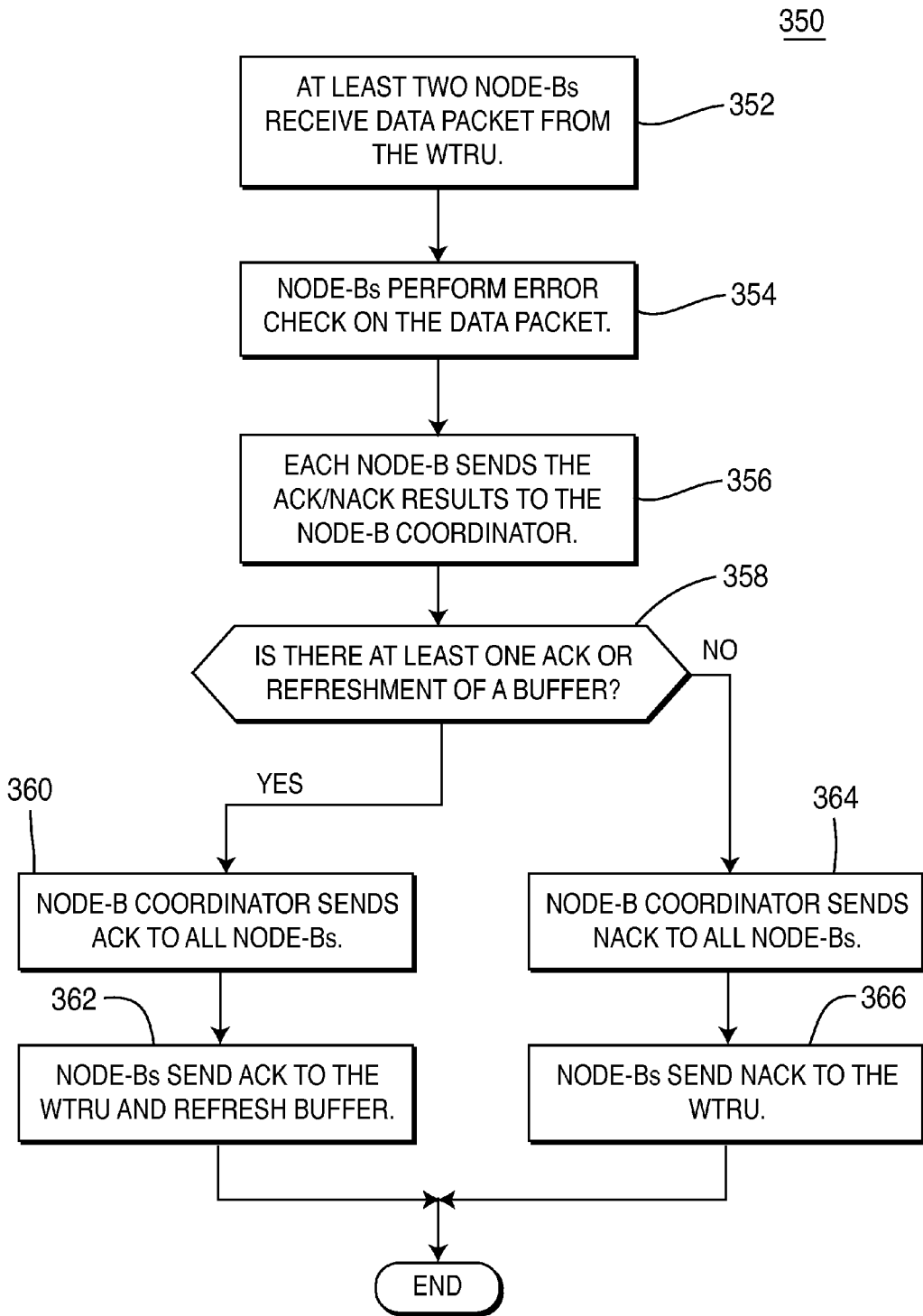


FIG. 3B

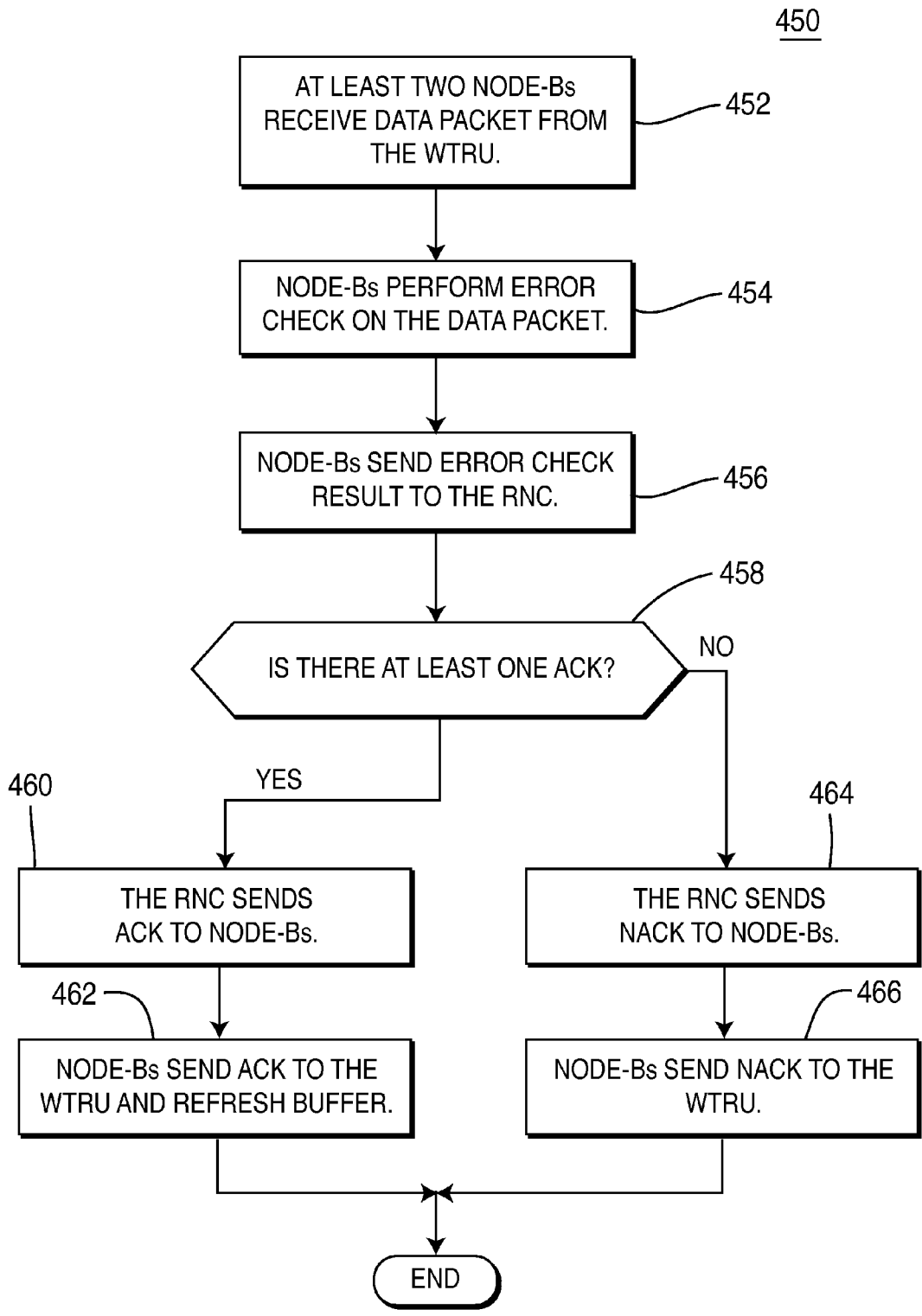


FIG. 4B

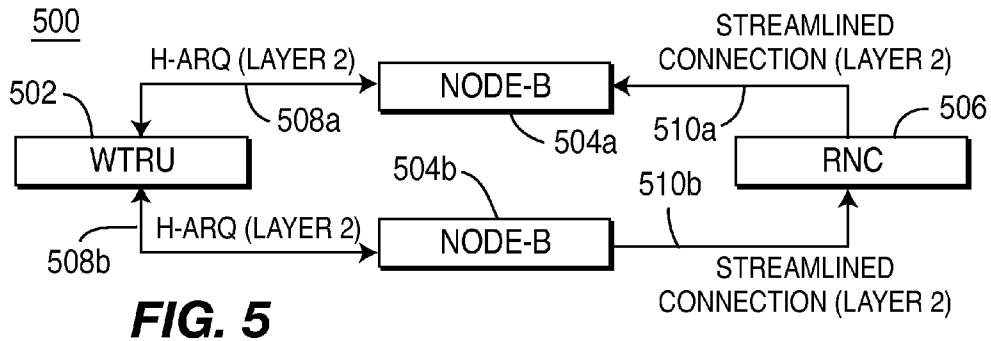


FIG. 5

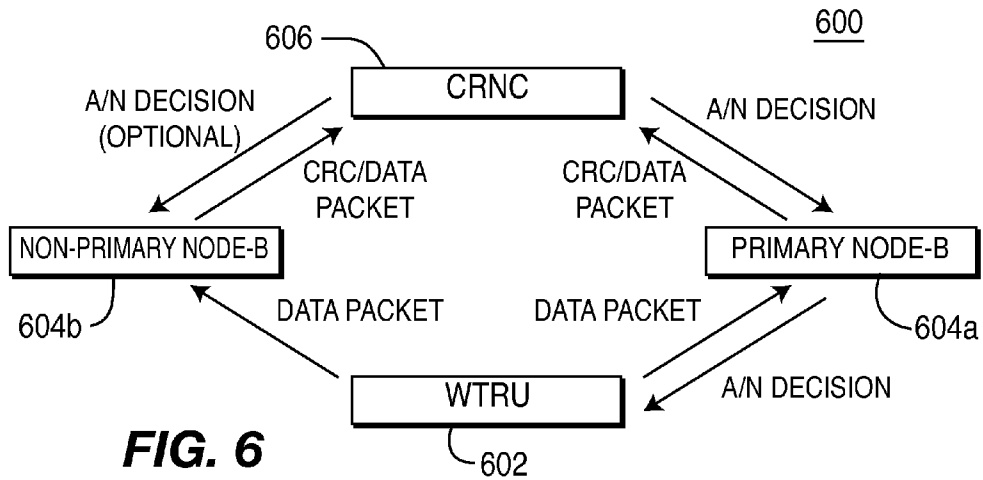


FIG. 6

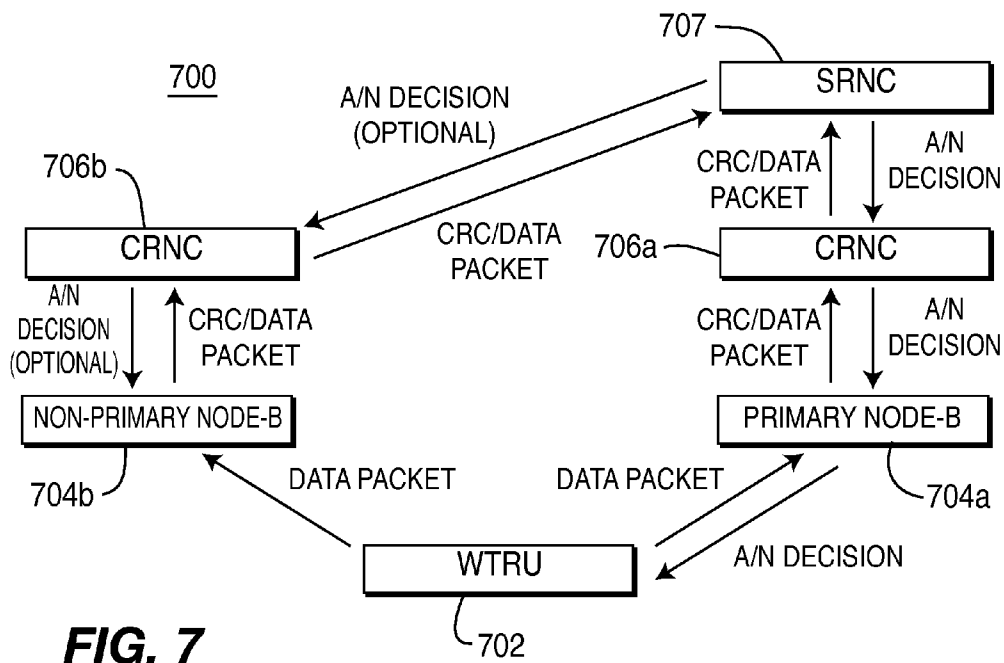


FIG. 7

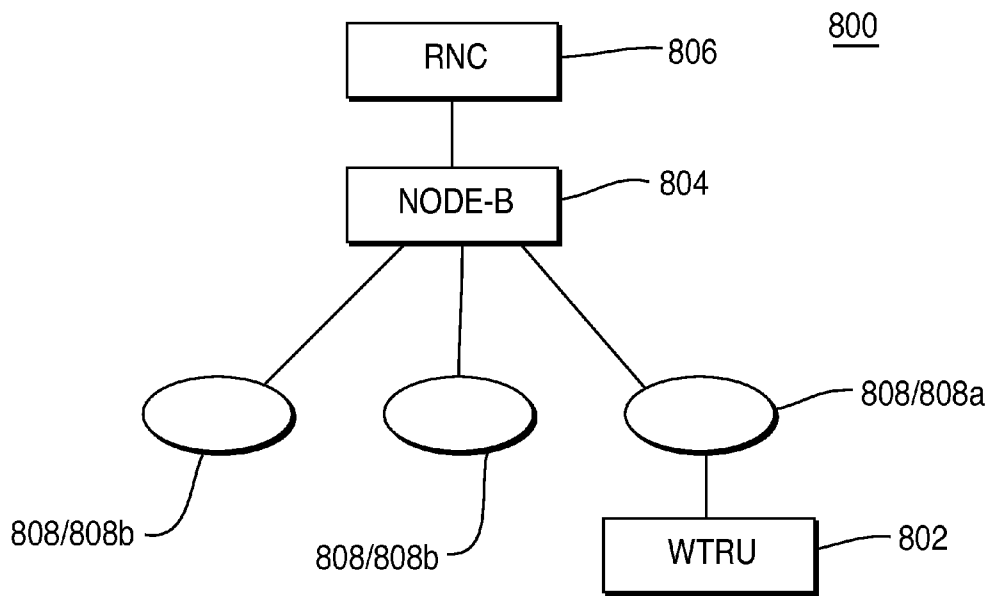


FIG. 8A

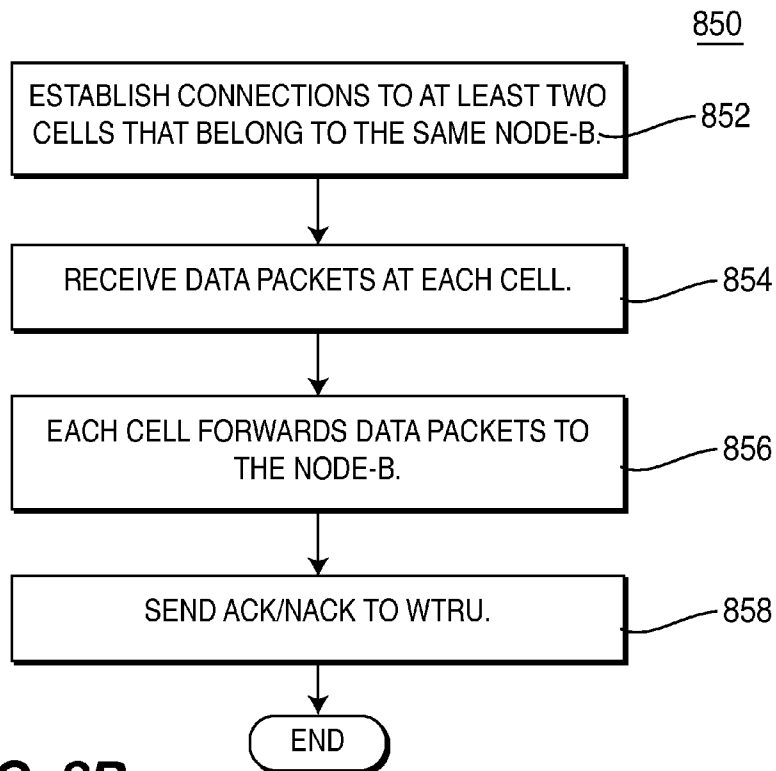


FIG. 8B

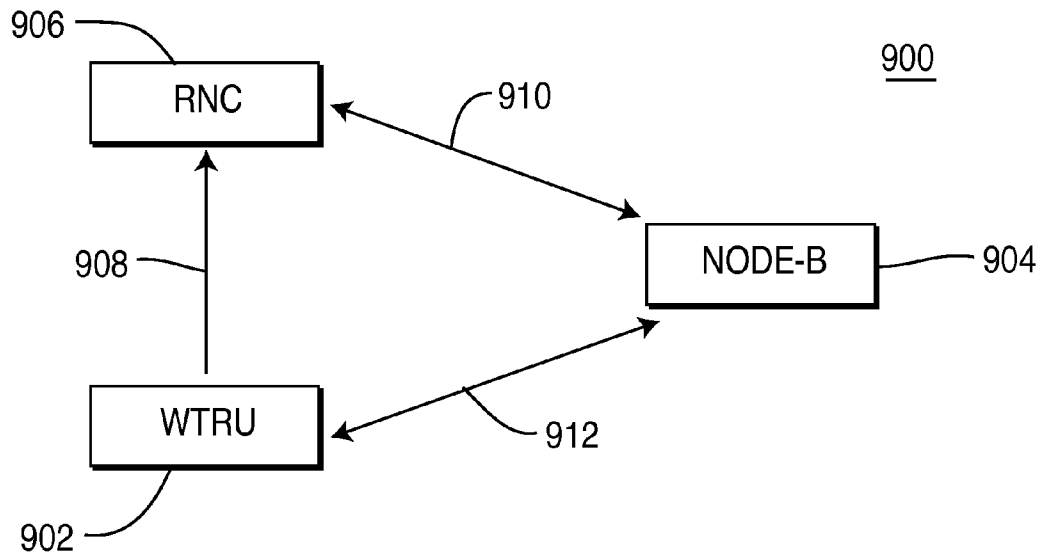


FIG. 9

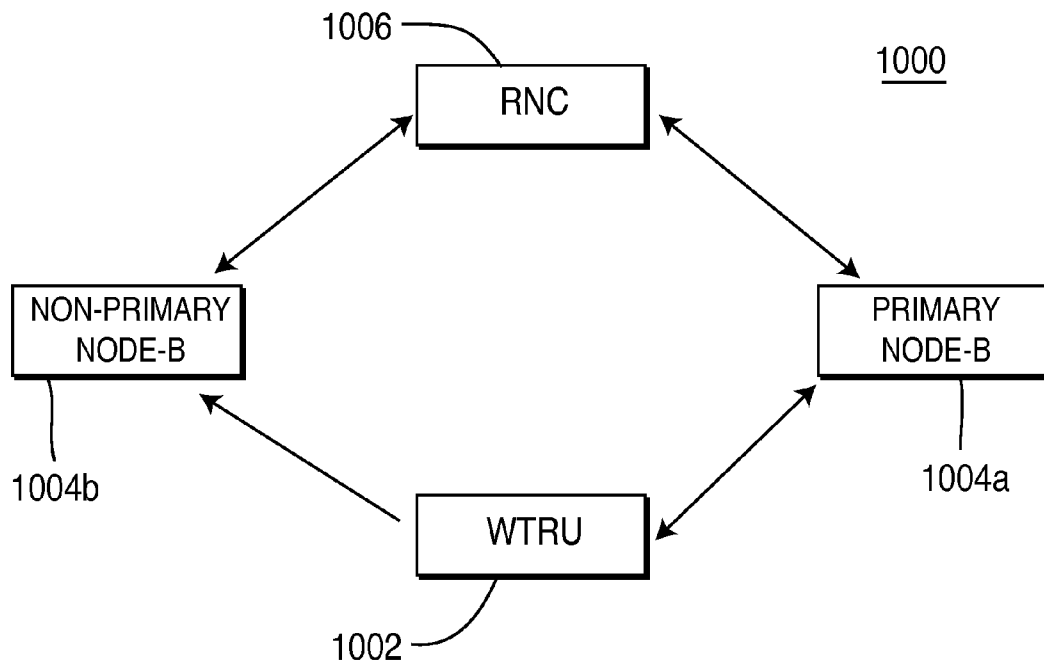


FIG. 10

ENHANCED UPLINK OPERATION IN SOFT HANDOVER

CROSS REFERENCE TO RELATED APPLICATION

This application is a continuation of U.S. patent application Ser. No. 10/925,426 filed on Aug. 25, 2004, which claims priority from U.S. Provisional Application Nos. 60/497,747 filed on Aug. 25, 2003; 60/507,554 filed on Oct. 1, 2003; 60/508,797 filed on Oct. 3, 2003; 60/520,207 filed on Nov. 14, 2003 and 60/585,174 filed on Jul. 2, 2004, which are incorporated by reference as if fully set forth.

FIELD OF INVENTION

The present invention is related to a wireless communications. More particularly, the present invention is related to an enhanced uplink (EU) operation during a soft handover.

BACKGROUND

Cellular wireless communication networks are divided into a plurality of coverage regions. Each coverage region in the network is served by a Node-B. As a wireless transmit/receive unit (WTRU) travels, it may move from one coverage region to another in the network.

The WTRU is served by the designated Node-B for a particular coverage region. The regions covered by Node-Bs overlap each other, and at the boundary of the region a WTRU can establish connections with more than one Node-B. As the WTRU moves from one coverage region to another in the network, the WTRU goes through handover. Soft handover is widely used to ensure communication without interruption while roving around a plurality of cells.

Soft handover occurs when a WTRU is connected to two or more Node-Bs simultaneously, on the same frequency. In soft handover, all Node-Bs serving the WTRU process the received data, which is then routed to a radio network controller (RNC) for macro diversity combining. For simplicity, the RNC may use an error detection technique such as a Cyclic Redundancy Check (CRC) and may accept a packet that passes the CRC.

Softer handover is a special case of soft handover. When a WTRU is in softer handover, the WTRU is connected to two or more cells belonging to the same Node-B. In contrast to soft handover, in softer handover macro diversity with or without maximum ratio combining can be performed in the Node-B.

Automatic repeat request (ARQ) is a technique whereby the receiver requests a retransmission of packets by the transmitter if errors are detected. Hybrid ARQ (H-ARQ) is a technique whereby transmitted data blocks are encoded for partial error correction at the receiver, and only data blocks with uncorrected errors are retransmitted. In prior art, i.e. in high speed downlink packet access (HSDPA), the H-ARQ functionality is terminated and controlled by the Node-B, (a technique called Node-B-controlled H-ARQ), allowing for rapid transmissions and retransmissions of erroneously received packets. This feature was both highly desirable and practical because H-ARQ in HSDPA was not required for soft handover. This feature would be highly desirable for EU also, but problems exist because it is intended for EU (and H-ARQ) to operate during soft handover.

One of the problems with Node-B-controlled H-ARQ in soft handover is the link imbalance. Since the associated uplink (UL) and downlink (DL) control signaling does not

benefit from the soft handover gain, it might be error prone and require significant power offsets. In the DL direction, the WTRU may not be able to receive the acknowledge (ACK) or non-acknowledge (NACK) signals from all involved Node-Bs. In the UL, not all involved Node-Bs may be able to receive the associated control signaling from the WTRU, which may lead to soft buffer corruption.

A soft buffer is a buffer for implementing H-ARQ in a Node-B. Data packets received, but not acknowledged, by the Node-B are temporarily stored in the soft buffer for incremental combining. Therefore, a data packet transmitted, but not acknowledged previously, is combined with a retransmission of the same data packet transmitted in response to NACK signaling. Chase combining is a special case of an incremental combining. The soft buffer corruption causes misalignment of an H-ARQ protocol state among different Node-Bs and leads to loss of the soft handover gain. It would be desirable to achieve efficient H-ARQ operation without the problems associated with prior art systems.

Node-Bs can often make more efficient decisions and manage UL radio resources on a short-term basis better than an RNC, even if the RNC retains overall control over Node-Bs. In order for a Node-B to assign UL radio resources to WTRUs in EU operation, the Node-B must know several WTRU-specific parameters. Under the current 3GPP standard, only the RNC can know the WTRU-specific parameters by means of radio resource control (RRC) messages. Therefore, it is necessary to forward the information to the Node-B for proper scheduling of radio resources in EU transmissions.

An RNC maintains an active set of cells for each WTRU in soft handover. The RNC bases its decision to add to or remove cells from the WTRU's active set upon measurements provided by a WTRU and a Node-B and on management of available radio resources in each cell. Under the current 3GPP standards, the RNC applies RRC radio bearer (RB) control procedures to coordinate active set cells with the WTRU, and Node-B application part/radio network subsystem application part (NBAP/RNSAP) radio link procedures to coordinate active set cells with each Node-B.

During soft handover, some information should be communicated between network entities to support EU operation. The information includes, but is not limited to, information related to an active set, information regarding a Node-B that controls transmissions during soft handover, EU scheduling information during soft handover, and ACK/NACK status information during soft handover. The current 3GPP standards do not define specific protocols to transfer necessary information which are imperative in operation of EU during soft handover. Therefore, it is necessary to define a protocol for transferring WTRU-specific information and other EU related information among an RNC, a Node-B, and a WTRU so that a Node-B is enabled to schedule radio resources and EU connections are handed over properly during soft handover.

SUMMARY

The present invention is related to EU operation during a soft handover in a wireless communication system. The wireless communication system comprises a WTRU, at least two Node-Bs, and an RNC. In accordance with one embodiment of the present invention, for each WTRU one Node-B is designated as a primary Node-B and any other Node-B within the EU active set as a non-primary Node-B. The primary Node-B controls EU operation during soft handover

including EU scheduling and H-ARQ. Soft buffer corruption is avoided by controlling H-ARQ during soft handover only by the primary Node-B. Alternatively, an RNC may control EU operation during soft handover including H-ARQ. In this case, an RNC generates final ACK/NACK decision based on the error check results of the Node-Bs.

BRIEF DESCRIPTION OF THE DRAWINGS

FIGS. 1A and 1B are diagrams of the first embodiment of the present invention.

FIGS. 2A and 2B are diagrams of the second embodiment of the present invention.

FIGS. 3A and 3B are diagrams of the third embodiment of the present invention.

FIGS. 4A and 4B are diagrams of the fourth embodiment of the present invention.

FIG. 5 is a diagram showing a streamlined connection between Node-Bs and an RNC in accordance with the present invention.

FIGS. 6 and 7 are diagrams of systems for transferring ACK/NACK signals in accordance with the present invention.

FIGS. 8A and 8B are diagrams of a system and process for softer handover in accordance with the present invention.

FIG. 9 is a diagram for transferring WTRU-specific information among network entities in accordance with the present invention.

FIG. 10 is a diagram for transferring information during handover among network entities in accordance with the present invention.

DETAILED DESCRIPTION OF THE PREFERRED EMBODIMENTS

The present invention will be described with reference to the drawing figures wherein like numerals represent like elements throughout.

When referred to hereafter, the terminology "WTRU" includes but is not limited to a user equipment, a mobile station, fixed or mobile subscriber unit, pager, or any other type of device capable of operating in a wireless environment. When referred to hereafter, the terminology "Node-B" includes but is not limited to a base station, site controller, access point or any other type of interfacing device in a wireless environment.

FIGS. 1A and 1B are diagrams of a system 100 and a process 150 of a first embodiment of the present invention. The WTRU 102 establishes connections with at least two cells controlled by different Node-Bs 104a, 104b for soft handover. Data packets transmitted from the WTRU 102 are received and processed separately by at least two Node-Bs 104a, 104b during soft handover (step 152).

One Node-B in a group of Node-Bs in an "active set" is designated as a primary Node-B 104a, while other Node-Bs in the active set are designated as non-primary Node-Bs 104b. An RNC 106 or the WTRU 102 makes this decision (step 152). If it is decided by an RNC 106, the RNC 106 informs all Node-Bs 104a, 104b and the WTRU 102. If it is decided by a WTRU 102, the WTRU 102 informs either all Node-Bs 104a, 104b or the RNC 106 which in turn informs all the Node-Bs 104a, 104b.

In making a decision regarding the primary Node-B 104a, the RNC 106 may use statistics, i.e. the number of successful decodings of particular WTRUs transmissions by each Node-B 104a, 104b, to identify the Node-B 104a, 104b with the best UL performance. It is the performance of the best

cell controlled by a Node-B that is evaluated, not the performance of all cells associated with a Node-B. The RNC 106 may also select the primary Node-B 104a by evaluating both UL performance as described above and DL performance as obtained from WTRU 102 measurements. The RNC 106 then notifies the Node-Bs 104a, 104b and the WTRU 102 regarding which one will be the primary Node-B 104a via Iub signaling and RRC signaling, respectively. The WTRU 102 may also be informed of the primary Node-B 104a by fast layer 1 signaling from Node-B.

The primary Node-B 104a employs incremental combining, while non-primary Node-Bs 104b may or may not use incremental combining. If the non-primary Node-Bs 104b do not use incremental combining, the non-primary Node-Bs 104b may use simple ARQ, and may always refresh their buffers and not perform any combining. This scheme eliminates the problem of soft buffer corruption in soft handover. If both a primary Node-B 104a and non-primary Node-Bs 104b perform incremental combining, soft buffer corruption may be eliminated with a new data indicator or a sequence number in physical control signaling sent by the WTRU 102 to inform Node-Bs 104a, 104b which data packet is being transmitted, and thereby the Node-Bs 104a, 104b can manage soft buffer without corruption.

All Node-Bs 104a, 104b in the active set receive a data packet from the WTRU 102 (step 154). Each Node-B 104a, 104b performs an error check on the data packet and generates an indication of success or failure in decoding the data packet (step 156). Determining whether a data packet is successfully received is performed via an error check procedure; such as implementing a cyclic redundancy check (CRC). The indication of success or failure in decoding the data packet by the Node-Bs can be configured in a variety of different forms, but will be referred to hereinafter as a CRC result, or an ACK/NACK, in all embodiments of the present invention. However, any type of error checking may be performed in accordance with the teachings of the present invention, and it should be understood that the term "CRC" or "ACK/NACK" is used only as an illustration, not as a limitation, of the present invention.

When a Node-B 104a, 104b correctly decodes the data packet as determined by the error check, the Node-B 104a, 104b transmits the data packet to the RNC 106. If the primary Node-B 104a derives an ACK from the data packet, it transmits an ACK signal to the WTRU 102 and the RNC 106 without waiting for the CRC results from non-primary Node-Bs 104b, and refreshes soft buffer (step 158). If the primary Node-B 104a derives a NACK from the data packet, it transmits a NACK to the RNC and waits for the final decision from the RNC or CRC results from non-primary Node-Bs forwarded through the RNC 106 (step 158). The primary Node-B 104a may set a timer as will be explained hereinafter. The primary Node-B 104a transmits an ACK/NACK signal to the WTRU 102 in accordance with the final decision made by the RNC 106 or CRC results forwarded from non-primary Node-Bs 104b.

Non-primary Node-Bs 104b transmit a data packet to the RNC 106 only if they derive an ACK from the data packet (step 158). The RNC 106 makes an ACK/NACK decision (step 160). If the RNC 106 receives at least one ACK from Node-Bs 104a, 104b, the RNC 106 makes an ACK decision, and if the RNC 106 receives no ACK from Node-Bs 104a, 104b within a predetermined time period, the RNC 106 makes a NACK decision. The RNC 106 transmits an ACK/NACK decision to the primary Node-B 104a. The RNC 106 may not send an ACK decision to the primary Node-B 104a when the primary Node-B 104a derives an ACK. The RNC

5

106 optionally transmits the ACK/NACK decision to the non-primary Node-Bs 104b for soft buffer management depending on the scheme of incremental combining at the non-primary Node-Bs 104b.

It is optional for the RNC 106 to use the packets delivered from non-primary Node-Bs 104b. If the RNC 106 uses the packet from non-primary Node-Bs 104b, a media access control (MAC) function of the RNC 106 performs an in-sequence delivery mechanism over all the received packets from all the involved Node-Bs 104a, 104b. If a Radio Link Control (RLC) layer realized an out of sequence transmission it assumes data is lost and requests retransmission. If the RNC 106 does not use the packets from non-primary Node-Bs 104b, the RNC 106 processes only the packets received from the primary Node-B 104a. The RNC 106 extracts and enters the data packet into the MAC level reordering buffer. After the RNC MAC performs the resequencing process, it sends the data to the RLC layer. Missed packets are identified and notified to the WTRU 102 through RLC messaging.

Optionally, a streamlined connection may be implemented in transmission of the result of the error check between Node-Bs and an RNC. A fast streamlined connection is explained with reference to FIG. 5. The streamlined connection is dedicated to fast signaling between the RNC 506 and the Node-Bs 504a, 504b, and eliminates a long delay between the RNC 506 and Node-Bs 504a, 504b. A high speed streamlined connection 510a, 510b is established between Node-Bs 504a, 504b and an RNC 506. CRC results from Node-Bs 504a, 504b to the RNC 506 and an ACK/NACK decisions from the RNC 506 to Node-Bs 504a, 504b are transmitted via the streamlined connections 510a, 510b. No direct physical link is required between Node-Bs 504a, 504b. Rather, a logical channel between Node-Bs 504a, 504b is required. The RNC 506 coordinates establishing the logical channel.

A fast streamlined connection 510a, 510b may be implemented in accordance with two alternatives. In accordance with the first alternative, two logical channels are established between an RNC 506 and two Node-Bs 504a, 504b, respectively. The RNC 506 receives H-ARQ signaling 510b from one Node-B 504b and processes it before forwarding it 510a to another Node-B 504a. The RNC 506 recognizes the status of H-ARQ process of each Node-B 504a, 504b by processing the signaling. As explained above, the CRC results are processed by the RNC 506 and the RNC 506 makes a final ACK/NACK decision and transmits the ACK/NACK decision to the Node-Bs 504a, 504b.

Upon reception of the first ACK from any Node-B 504a, 504b in the RNC 506, the RNC 506 transmits ACK decision to all Node-Bs 504a, 504b. In the case that all Node-Bs 504a, 504b derive a NACK, it takes some time to wait for all Node-Bs 504a, 504b to provide the CRC results. Therefore, optionally the RNC 506 may set a timer waiting for all Node-B's responses and if the timer expires the RNC 506 transmits a NACK to all Node-Bs 504a, 504b.

In accordance with the second alternative, a single logical channel between two Node-Bs 504a, 504b via an RNC 506 is established. The RNC 506 receives CRC results from one Node-B 504b and just forwards it to another Node-B 504a without processing it. This process is fast since the signaling is just routed between Node-Bs 504a, 504b without processing at the RNC 506. Therefore, it avoids the processing delay and protocol delay at the RNC 506. Each Node-B 504a, 504b derives the final ACK/NACK decision based on the collected CRC results from all the involved Node-Bs 504a, 504b in the active set. If there is at least one ACK from

6

any Node-B, a final ACK decision will be made at each Node-B 504a, 504b. Otherwise, a final decision of NACK will be made by the Node-B 504a, 504b. As stated above, each Node-B 504a, 504b generates an ACK decision upon reception of the first ACK from any Node-B 504a, 504b. The Node-Bs 504a, 504b may set a timer waiting for an ACK from other Node-Bs 504a, 504b, and if the Node-Bs 504a, 504b do not receive any ACK before the expiration of the timer, the Node-Bs 504a, 504b generates a NACK decision.

The streamlined connection 510a, 510b between Node-Bs 504a, 504b and an RNC 506 may be implemented in any embodiment of the present invention described herein.

With reference to FIGS. 6 and 7, signaling of the ACK/NACK decision between an RNC and Node-Bs is explained. FIG. 6 shows a system 600 whereby a non-primary Node-B 604b has the same controlling RNC (CRNC) 606 as the primary Node-B 604a. In this case, the CRNC 606 sends an asynchronous ACK to the WTRU 602 via the primary Node-B 604a.

FIG. 7 shows a system 700 whereby a non-primary Node-B 704b has a different CRNC 706b from a CRNC 706a of the primary Node-B 704a. In this case, a serving RNC (SRNC) 707 sends an asynchronous ACK to the WTRU 702 via the primary Node-B 704a.

FIGS. 2A and 2B are diagrams of a system 200 and a process 250 of the second embodiment of the present invention. In this second embodiment, incremental combining is performed in each Node-B 204a, 204b whereby each Node-B 204a, 204b combines a previous transmission of a data packet with a retransmission of the same data packet with or without increased redundancy from the WTRU 202.

A WTRU 202 establishes connections with at least two cells controlled by different Node-Bs 204a, 204b for soft handover, and data packets transmitted from the WTRU 202 are received and processed separately by the Node-Bs 204a, 204b (step 252). Each Node-B 204a, 204b performs an error check on the data packet and generates a CRC result (step 254). Each Node-B 204a, 204b transmits the CRC result to the RNC 206. Simultaneously, each Node-B 204a, 204b transmits the CRC result to the WTRU 202 as well (step 256). The WTRU 202 makes a determination regarding whether there is at least one ACK received from Node-Bs 204a, 204b (step 258). The WTRU 202 may receive both ACK and NACK signals from the Node-Bs 204a, 204b. If the WTRU 202 receives no ACK, it schedules retransmission of the data packet (step 264). The Node-Bs 204a, 204b perform incremental combining of the retransmission with the previous transmission. If the WTRU 202 receives at least one ACK from any Node-B 204a, 204b, the WTRU 202 transmits the next data packet (step 262).

The RNC 206 also makes an ACK/NACK decision based on collected ACK/NACK signals from the Node-Bs 204a, 204b (step 260). The RNC 206 generates and transmits an ACK decision (step 268) if the RNC 206 receives at least one ACK from the Node-Bs 204a, 204b. Otherwise, the RNC 206 generates and transmits a NACK decision to the Node-Bs 204a, 204b (step 270). The ACK/NACK decision is transmitted to the Node-Bs 204a, 204b. Each Node-B 204a, 204b refreshes its soft buffer once it receives ACK decision from the RNC 206 (step 272). With this scheme, soft buffer corruption is eliminated.

FIGS. 3A and 3B are diagrams of a system 300 and a process 350 of a third embodiment of the present invention. The WTRU 302 establishes at least two connections with cells controlled by different Node-Bs 304a, 304b for soft handover. Data packets transmitted from the WTRU 302 are received and processed separately by at least two Node-Bs

304a, 304b during soft handover (step **352**). Each Node-B **304a, 304b** performs an error check on the data packet and generates an ACK/NACK result based on the error check on the received data packet (step **354**). A Node-B coordinator **308** is provided to coordinate among Node-Bs **304a, 304b**, and between Node-Bs **304a, 304b** and the RNC **306**. Each Node-B **304a, 304b** sends the ACK/NACK result to the Node-B coordinator **308** (step **356**). In this embodiment, a final decision on whether an ACK or a NACK is transmitted to the WTRU **302** is made by the Node-B coordinator **308**. It is determined whether any of the involved Node-Bs **304a, 304b** generates an ACK as a result of the error check (step **358**). If so, the Node-B coordinator **308** commands each of all the involved Node-Bs **304a, 304b** to flush out the corresponding soft buffer and to prepare for a new transmission, regardless of the result of the error check derived at each Node-B **304a, 304b** (step **360**). In response, each Node-B **304a, 304b** sends an ACK to the WTRU **302** and refreshes its soft buffer (step **362**).

If the results of the error check from all Node-Bs **304a, 304b** fail, (i.e. all of the Node-Bs **304a, 304b** generate NACKs) or a response timer Node-B coordinator expires, the Node-B coordinator **308** informs all of the Node-Bs **304a, 304b** that they failed to successfully decode the transmitted data packet and that they should prepare for retransmission of the data packet (step **364**). In response, the Node-Bs **304a, 304b** send a NACK to the WTRU **302** (step **366**).

FIGS. **4A** and **4B** are diagrams of a system **400** and a process **450** of a fourth embodiment of the present invention. For soft handover, a WTRU **402** establishes a separate connection with at least two cells controlled by different Node-Bs **404a, 404b** in an active set. Data packets transmitted from the WTRU **402** are received and processed separately by the Node-Bs **404a, 404b** during soft handover (step **452**). Each Node-B **404a, 404b** performs an error check on the received data packets and generates an indication of success or failure in decoding the data packet (step **454**).

Each Node-B **404a, 404b** transmits a CRC result to the RNC **406** (step **456**). If the Node-B **404a, 404b** succeeds in decoding the data packet, the Node-B **404a, 404b** sends an ACK to the RNC **406** along with the data packet. If the Node-B **404a, 404b** fails in decoding the data packet, the Node-B **404a, 404b** sends a NACK to the RNC **406**. An ACK and NACK may be sent with each data block within Iub/Iur frame protocols between Node-Bs **404a, 404b** and the RNC **406**. The RNC **406** makes a final ACK/NACK decision regarding the transmission of the data packet from the error check results conducted by the Node-Bs **404a, 404b** (step **458**). The RNC **406** makes an ACK decision if the RNC **406** receives at least one ACK from the Node-Bs **404a, 404b**. Otherwise the RNC **406** makes a NACK decision. The ACK or NACK decision made by the RNC **406** is then transmitted back to the Node-Bs **404a, 404b** at steps **460** and **464**, respectively. Each Node-B **404a, 404b** clears its buffer upon receipt of the ACK decision from the RNC **406**. All Node-Bs **404a, 404b** transmit the same ACK or NACK signal made by the RNC **406** to the WTRU **402** regardless of the CRC result that each Node-B **404a, 404b** individually derived from the data packet (steps **462** and **466**). In this case, the WTRU **402** may apply maximum ratio combining (MRC) to the received ACK/NACK feedback signals from the Node-Bs **404a, 404b**.

The soft buffer in each Node-B **404a, 404b** is managed according to the ACK/NACK decision made by the RNC **406**, regardless of the associated error check result derived

by the Node-Bs **404a, 404b**. Consequently, the fourth embodiment of the present invention allows the RNC **406** to align the soft buffer status in each Node-B **404a, 404b**. Additionally, the WTRU **402** can benefit from the soft handover gain for the ACK/NACK signaling, since identical ACK/NACK signaling is transmitted by all Node-Bs **404a, 404b**. As such, the WTRU **402** may perform macro diversity combining (maximum ratio combining) for ACK/NACK signaling, since the ACK/NACK signals transmitted back to the WTRU **402** from all the involved Node-Bs **404a, 404b** are identical.

A fifth embodiment of the present invention will be explained with reference to FIG. **2A**. The fifth embodiment is similar to the second embodiment, except that Node-Bs **204a, 204b** do not perform incremental combining during soft handover. A WTRU **202** establishes connections with at least two cells controlled by different Node-Bs **204a, 204b** for soft handover. Data packets transmitted from the WTRU **202** are received and processed separately by at least two Node-Bs **204a, 204b** during soft handover. Each Node-B **204a, 204b** performs an error check on the data packet and transmits an ACK/NACK signal to the WTRU **202**. The Node-Bs **204a, 204b** send ACKs along with an identification of transmission to an RNC **206**. The WTRU **202** sends a sequence of data packets and simultaneously looks at the MAC level for an ACK from any Node-B **204a, 204b** when it is in soft handover, and only from the current Node-B when it is not in soft handover. This method causes retransmission when either the time-out threshold is exceeded for an ACK or an out-of-sequence is reported by all cells. Alternatively, this embodiment may be implemented with respect to other embodiments including the first embodiment shown in FIG. **1A**.

FIGS. **8A** and **8B** are diagrams of a system **800** and a process **850** for softer handover in accordance with the present invention. During softer handover, the WTRU **802** establishes connections with more than one cell **808** which are controlled by the same Node-B **804** (step **852**). EU transmissions from the WTRU **802** are processed by each cell **808** independently (step **854**), and each cell **808** transmissions received from the WTRU **802** are processed by the Node-B **804** controlling these cells (step **856**). There are two alternatives with respect to incremental combining of transmissions transmitted from the WTRU **802**.

In accordance with the first alternative, the Node-B **804** receives data packets from all the involved cells **808** and combines them using a technique, such as maximum ratio combining, before performing error check on the data packet. The resulting combined data packet is error checked at the Node-B **804**.

In accordance with the second alternative, each cell **808** processes the data packet individually determining error check on the data packet received from the WTRU **802**. The Node-B **804** accepts the data packet that the error check has passed in any of the cells **808** within the active set.

In downlink, the Node-B **804** sends messages including ACK/NACK to the WTRU **802** via all the involved cells **808** (step **858**). The WTRU **802** needs to monitor all channels, preferably shared channels, from the involved cells **808** to detect downlink messages. The number of shared channels that the WTRU **802** should monitor from each cell **808** may be limited, such as up to 4 channels.

One of the cells **808** may be designated as a primary cell **808a**, while other cells are designated as non-primary cells **808b**. The primary cell **808a** sends a message on any of the downlink shared channels allocated to the WTRU **802**. The message carries a shared channel indicator for non-primary

cells **808b**. The non-primary cells **808b** send messages on the channel indicated by the shared channel indicator. In order to implement this scheme, there is a timing offset between the transmission of the shared channel indicator from the primary cell **808a** and the transmission of messages from non-primary cells **808b**. The WTRU **802** first monitors all shared channels from the primary cell **808a**. Once the WTRU **802** detects that one of the shared channels carry messages to the WTRU **802**, the WTRU **802** reads shared channel indicator along with the downlink messages from the primary cell **808a**. Then, the WTRU **802** receives messages from the non-primary cells **808b** indicated by the shared channel indicator. With this scheme, it is possible to lower the number of channels that the WTRU **802** should monitor. The WTRU **802** then combines the messages received from all the involved cells **808** using a technique, such as maximum ratio combining.

Alternatively, for the DL, only the primary cell **808a** may transmit messages to the WTRU **802**. The Node-B **804** transmits downlink messages via the primary cell **808a**, while all non-primary cells **808b** switch off the downlink signaling to the WTRU **802**. With this scheme, the WTRU **802** receive processing is simplified and downlink interference is reduced.

FIG. **9** is a diagram of a system **900** for transferring WTRU-specific information to support EU operation **912** in accordance with the present invention. Initially, an RNC **906** obtains WTRU-specific information from a WTRU **902** using RRC messaging **908** at the initial connection. Then, the WTRU-specific information is forwarded from the RNC **906** to a Node-B **904** to be used in scheduling EU transmissions for the WTRU **902**. The transfer of the information from the RNC **906** to the Node-B **904** is via an Iub interface **910**, and an Iur interface if an SRNC is not the same as a CRNC. A new signaling mechanism may be utilized to transfer the information from the RNC **906** to the Node-B **904**, or alternatively, the existing mechanisms over Iur and Iub interfaces may be modified in order for the RNC **906** to forward relevant WTRU-specific information to the Node-B **904**.

FIG. **10** is a diagram of a system **1000** for transferring information among network entities during soft handover in accordance with the present invention. During EU operation, if a WTRU **1002** needs to change the serving cell or the serving Node-B, a softer or soft handover procedure is initiated. Hereinafter, for simplicity, the present invention will be explained only with respect to a soft handover. During soft handover, some information should be communicated between network entities to support EU operation. The information includes, but is not limited to, information related to an active set, information regarding a primary Node-B if the system so designates, EU scheduling/rate information, and ACK/NACK status information.

An RNC **1006** maintains an active set of cells for handover. The RNC **1006** selects and removes cells in the active set based on measurements reported from Node-Bs **1004a**, **1004b** and the WTRU **1002** and on available radio resources. Once the RNC **1006** selects cells for the active set, the RNC **1006** sends messages to the Node-Bs **1004a**, **1004b** and the WTRU **1002** to inform the selected cells for the active set to support soft handover for EU. The RNC **1006** also sends messages to update the active set each time the RNC **1006** adds or removes a cell in the active set. The messages may be transmitted using existing RRC and NBAP/RNSAP active set management procedures or new procedures.

Either the RNC **1006** or the Node-Bs **1004a**, **1004b** and the WTRU **1002** may designate one Node-B as a primary Node-B **1004a** and other Node-Bs in the active set as non-primary Node-Bs **1004b** during soft handover. The selection of the primary Node-B **1004a** is based on UL performance measured and reported by each Node-B **1004a**, **1004b** and/or DL performance measured and reported by the WTRU **1002**.

During soft handover, only the primary Node-B **1004a** performs scheduling and assigning radio resources to the WTRU **1002**. The primary Node-B **1004a** informs the RNC **1006** of scheduled EU transmissions via Iub NBAP signaling or within the EU frame protocol. The RNC **1006** then informs non-primary Node-Bs **1004b** of the allocation of radio resources for EU and routing of received data. This is also signaled over NBAP or within the EU frame protocol. Alternatively, non-primary Node-Bs **1004b** may be informed by Iub NBAP procedures of sets of EU physical channels for the period each cell is within the active subset. Each non-primary Node-B **1004b** within the active set continuously receives these channels independent of radio resources allocation scheduled by the primary Node-B **1004a**.

Although the features and elements of the present invention are described in the preferred embodiments in particular combinations, each feature or element can be used alone without the other features and elements of the preferred embodiments or in various combinations with or without other features and elements of the present invention.

What is claimed is:

1. A method comprising:

transmitting a data packet to a Node-B via a primary cell and at least one non-primary cell, the primary cell and the at least one non-primary cell being controlled by the Node-B, wherein the data packet is sent via the primary cell and the at least one non-primary cell over an enhanced uplink (EU) channel;

receiving an acknowledgement (ACK) from the Node-B on a condition that the transmitted data packet is successfully decoded; and

receiving a negative acknowledgement (NACK) from the Node-B on a condition that the transmitted data packet is not successfully decoded;

wherein the NACK is received only via the primary cell.

2. The method of claim 1, wherein the ACK or NACK is received via the primary cell over one or more downlink channels shared by a plurality of wireless transmit/receive units.

3. The method of claim 2, further comprising:

receiving a shared channel indicator from the primary cell;

wherein the shared channel indicator indicates over which of the one or more downlink channels, downlink messages are allowed to be received.

4. The method of claim 1, further comprising:

receiving downlink messages via the primary cell during handover.

5. The method of claim 1, wherein the ACK is received via the primary cell and the at least one non-primary cell.

6. An apparatus comprising:

a transmitter, wherein the transmitter transmits a data packet to a Node-B via a primary cell and at least one non-primary cell, the primary cell and the at least one non-primary cell being controlled by the Node-B, wherein the data packet is sent via the primary cell and the at least one non-primary cell over an enhanced uplink (EU) channel; and

11

a receiver, wherein the receiver:
 receives an acknowledgement (ACK) from the Node-B on
 a condition that the transmitted data packet is success-
 fully decoded; and
 receives a negative acknowledgement (NACK) from the 5
 Node-B on a condition that the transmitted data packet
 is not successfully decoded;
 wherein the NACK is received only via the primary cell.
 7. The apparatus of claim 6, wherein the ACK or NACK 10
 is received via the primary cell over one or more downlink
 channels shared by a plurality of wireless transmit/receive
 units.
 8. The apparatus of claim 7, wherein the receiver further:
 receives a shared channel indicator via the primary cell;
 wherein the shared channel indicator indicates over which 15
 of the downlink channels the receiver is allowed to
 receive messages.
 9. The apparatus of claim 6, wherein the ACK is received
 via both the primary cell and the at least one non-primary 20
 cell.
 10. The apparatus of claim 6, wherein the receiver further:
 receives downlink messages via the primary cell during
 handover.
 11. The apparatus of claim 6, wherein the apparatus is a 25
 wireless transmit/receive unit.
 12. A method for operating a Node-B, the method com-
 prising:
 receiving a data packet from a wireless transmit/receive
 unit (WTRU) via a primary cell and at least one 30
 non-primary cell controlled by the Node-B, wherein the
 data packet is received from the WTRU over an
 enhanced uplink (EU) channel;
 combining the data packet received via the primary cell 35
 and the data packet received via the at least one
 non-primary cell into a combined data packet;
 transmitting an acknowledgement (ACK) to the WTRU
 on a condition that the combined data packet is suc-
 cessfully decoded; and
 transmitting a negative acknowledgement (NACK) to the 40
 WTRU on a condition that the combined data packet is
 not successfully decoded;
 wherein the NACK is transmitted only via the primary
 cell.
 13. The method of claim 12, wherein the ACK or NACK 45
 is transmitted over one or more downlink channels shared by
 a plurality of WTRUs.
 14. The method of claim 13, further comprising:
 transmitting a shared channel indicator via the primary 50
 cell;
 wherein the shared channel indicator indicates over which
 of the downlink channels the WTRU is allowed to
 receive messages.
 15. The method of claim 12, wherein the ACK is trans- 55
 mitted via the primary cell and the at least one non-primary
 cell.

12

16. The method of claim 12, wherein the data packet
 received via the primary cell and the data packet received via
 the at least one non-primary cell is combined using maxi-
 mum ratio combining.
 17. The method of claim 12, further comprising:
 transmitting downlink messages to the WTRU via the
 primary cell during handover.
 18. The method of claim 12, further comprising:
 sending an ACK to a radio network controller (RNC) on
 the condition that the combined data packet is success-
 fully decoded;
 wherein the RNC controls the Node-B.
 19. A Node-B comprising:
 a receiver and a transmitter;
 wherein the receiver:
 receives a data packet from a wireless transmit/receive
 unit (WTRU) via a primary cell and at least one
 non-primary cell controlled by the Node-B, wherein the
 data packet is received over an enhanced uplink (EU)
 channel;
 combines the data packet received via the primary cell
 and the data packet received via the at least one
 non-primary cell into a combined data packet; and
 decodes the combined data packet,
 and wherein the transmitter:
 transmits an acknowledgement (ACK) to the WTRU on a
 condition that the combined data packet is successfully
 decoded; and
 transmits, via only the primary cell, a negative acknowl-
 edgement (NACK) to the WTRU on a condition that
 the combined data packet is not successfully decoded.
 20. The Node-B of claim 19, wherein the ACK or NACK
 is transmitted via the primary cell over one or more down-
 link channels shared by a plurality of WTRUs.
 21. The Node-B of claim 20, wherein the transmitter
 further:
 transmits a shared channel indicator via the primary cell,
 wherein the shared channel indicator indicates over
 which of the downlink channels of at least one non-
 primary cell the WTRU is allowed to receive messages.
 22. The Node-B of claim 19, wherein the ACK is trans-
 mitted via both the primary cell and the at least one
 non-primary cell.
 23. The Node-B of claim 19, wherein the data packet
 received via the primary cell and the data packet received via
 the at least one non-primary cell is combined using maxi-
 mum ratio combining.
 24. The Node-B of claim 19, wherein the transmitter
 further:
 transmits downlink messages to the WTRU via the pri-
 mary cell during handover.
 25. The Node-B of claim 19 wherein the transmitter
 further:
 sends an ACK to a radio network controller (RNC) on the
 condition that the combined data packet is successfully
 decoded;
 wherein the RNC controls the Node-B.

* * * * *