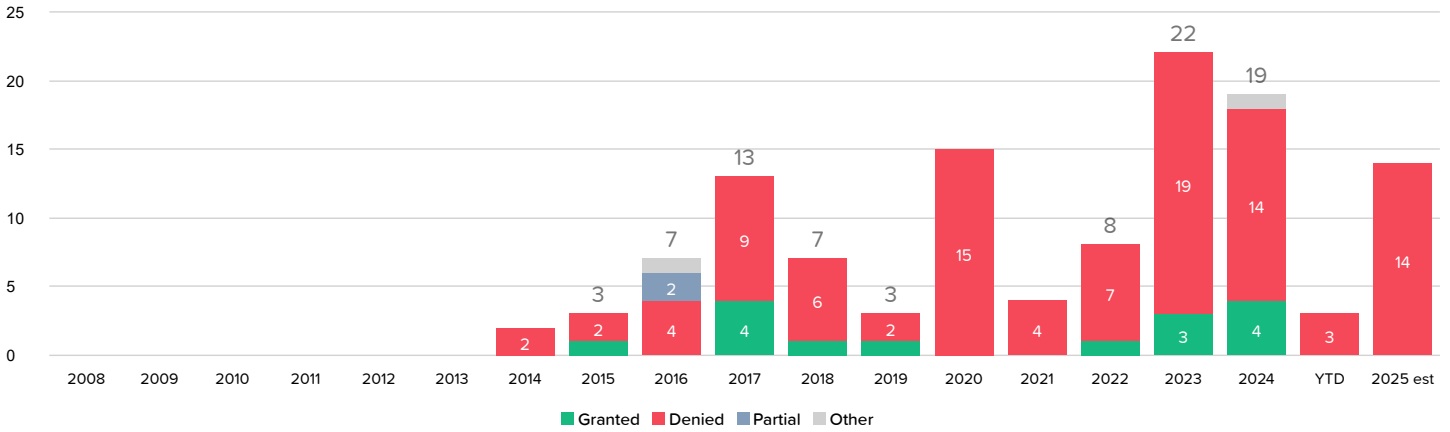


Motion Success for Stay Pending IPR

[VIEW IN BROWSER](#)

Judges: Rodney Gilstrap Postures of Motion: Motion by a Party Types of Document: Motion to Stay Pending Inter Partes Review

Motion Success by Year



This chart shows the outcomes of decisions on motions of the specified type(s) by year. Estimated current year totals are computed by assuming new decisions will be issued, and will reach the same proportionate outcomes, as decisions which have already occurred this year to date.

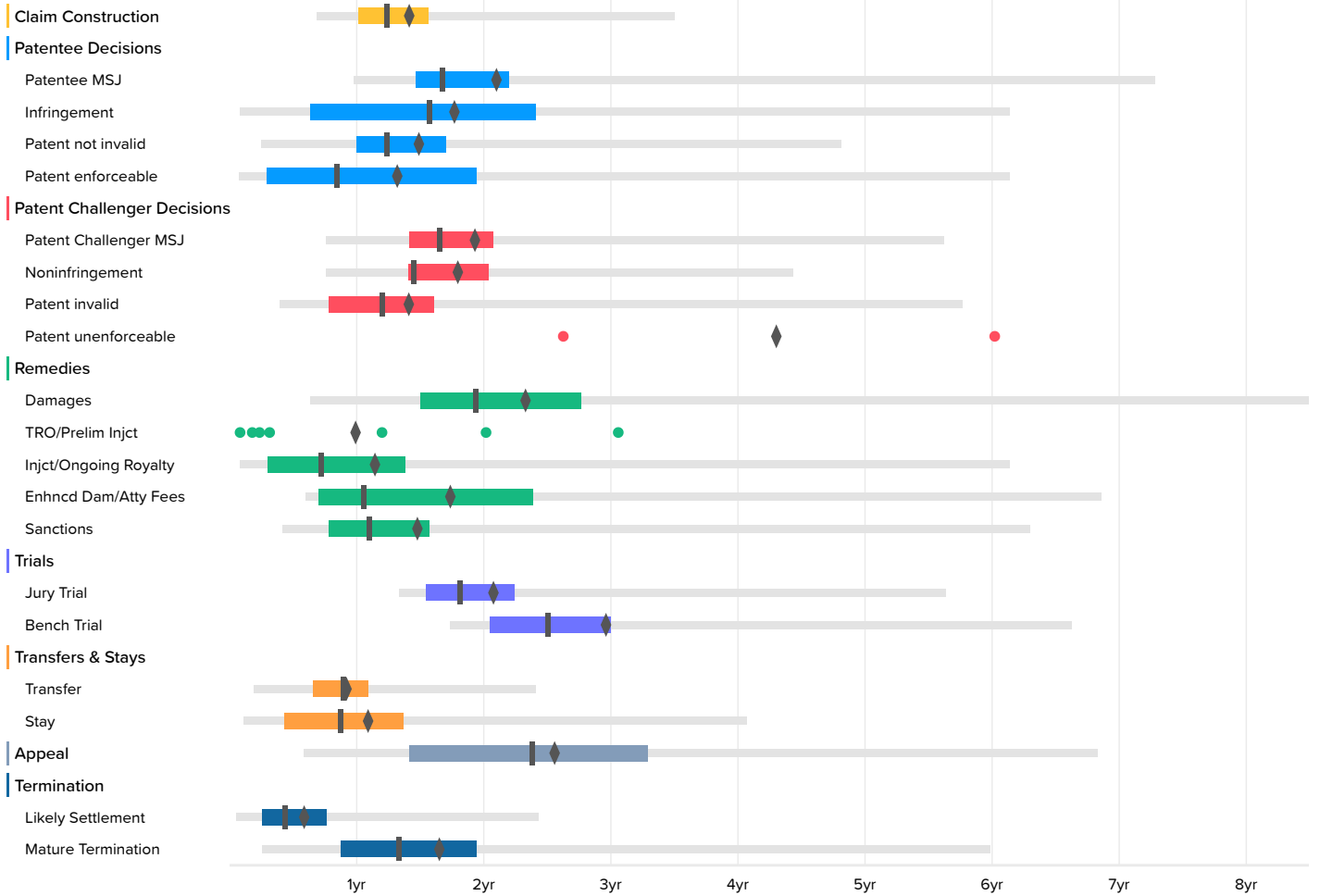
	2008	2009	2010	2011	2012	2013	2014	2015	2016	2017	2018	2019	2020	2021	2022	2023	2024	YTD	2025 est
Granted	0	0	0	0	0	0	0	1	0	4	1	1	0	0	1	3	4	0	
Denied	0	0	0	0	0	0	2	2	4	9	6	2	15	4	7	19	14	3	14
Partial	0	0	0	0	0	0	0	0	2	0	0	0	0	0	0	0	0	0	
Other	0	0	0	0	0	0	0	0	1	0	0	0	0	0	0	0	1	0	
Total	0	0	0	0	0	0	2	3	7	13	7	3	15	4	8	22	19	3	14

Time to Milestones

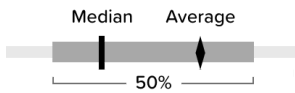
VIEW IN BROWSER

Judges: Rodney Gilstrap Case Filing Date: On or After Jan. 1st, 2008

U.S. District Courts (9106 cases)



The milestones shown in this chart are based on Docket Navigator's classification of orders matching the search criteria specified to generate the report. Each box plot shows the time between the filing of the complaint and the named milestone. The left and right ends of the box labeled 50% are respectively the first- and third-quartiles. The lighter line shows events between the 2nd and 98th percentile. The remaining points are outliers, represent at most 4% of the data, and are not shown, however, the true minimum and maximum are included in the accompanying table and the mean includes outliers. Fewer than ten events occurring in a category are shown as dots instead of a box plot.



U.S. District Courts

	Occurrences	Minimum	2nd Percentile	First Quartile	Median	Third Quartile	98th Percentile	Maximum	Average
Claim Construction	527	0.4	8.3	12.2	14.8	18.7	41.9	86.8	17.2
Patentee MSJ	71	3.1	11.7	17.6	20.0	26.3	87.2	87.2	25.4
Infringement	135		1.0	7.6	18.9	28.8	73.5	107.2	21.4
Patent not invalid	522		3.0	11.9	14.9	20.4	57.6	107.2	18.1
Patent enforceable	64	0.7	1.0	3.5	10.1	23.2	73.5	101.7	16.0
Patent Challenger MSJ	204	4.9	9.1	17.0	19.8	24.8	67.3	106.5	23.4
Noninfringement	244	-1.5	9.1	16.9	17.3	24.4	53.1	87.0	21.8
Patent invalid	255		4.7	9.3	14.4	19.3	69.0	106.3	17.1
Patent unenforceable	2	31.4			51.8			72.1	51.8
Damages	89	0.2	7.6	18.0	23.2	33.1	101.7	107.2	28.1
TRO/Prelim Injct	7	1.0			3.8			36.6	12.1
Injct/Ongoing Royalty	88	0.7	1.0	3.6	8.6	16.5	73.5	107.2	13.9
Enhncd Dam/Atty Fees	61	2.3	7.2	8.4	12.6	28.6	82.2	92.2	21.1
Sanctions	16	2.2	5.0	9.3	13.1	18.8	75.4	75.4	17.9
Jury Trial	107	7.3	16.0	18.5	21.7	26.9	67.5	87.0	25.1
Bench Trial	24	19.6	20.8	24.5	30.0	35.9	79.3	79.3	35.7
Transfer	482		2.3	7.9	10.8	13.0	28.8	44.2	11.3
Stay	889	0.0	1.3	5.1	10.5	16.4	48.8	105.4	13.3
Appeal	155	1.2	7.0	16.9	28.5	39.4	81.8	107.7	30.9
Likely Settlement	6605		0.6	3.1	5.2	9.1	29.1	90.9	7.3
Mature Termination	1714	0.2	3.0	10.4	16.0	23.3	71.7	120.9	20.0

Time to Milestones

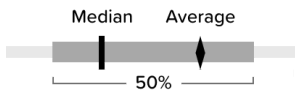
[VIEW IN BROWSER](#)

Judges: Rodney Gilstrap Case Filing Date: On or After Jan. 1st, 2019

U.S. District Courts (2656 cases)



The milestones shown in this chart are based on Docket Navigator's classification of orders matching the search criteria specified to generate the report. Each box plot shows the time between the filing of the complaint and the named milestone. The left and right ends of the box labeled 50% are respectively the first- and third-quartiles. The lighter line shows events between the 2nd and 98th percentile. The remaining points are outliers, represent at most 4% of the data, and are not shown, however, the true minimum and maximum are included in the accompanying table and the mean includes outliers. Fewer than ten events occurring in a category are shown as dots instead of a box plot.

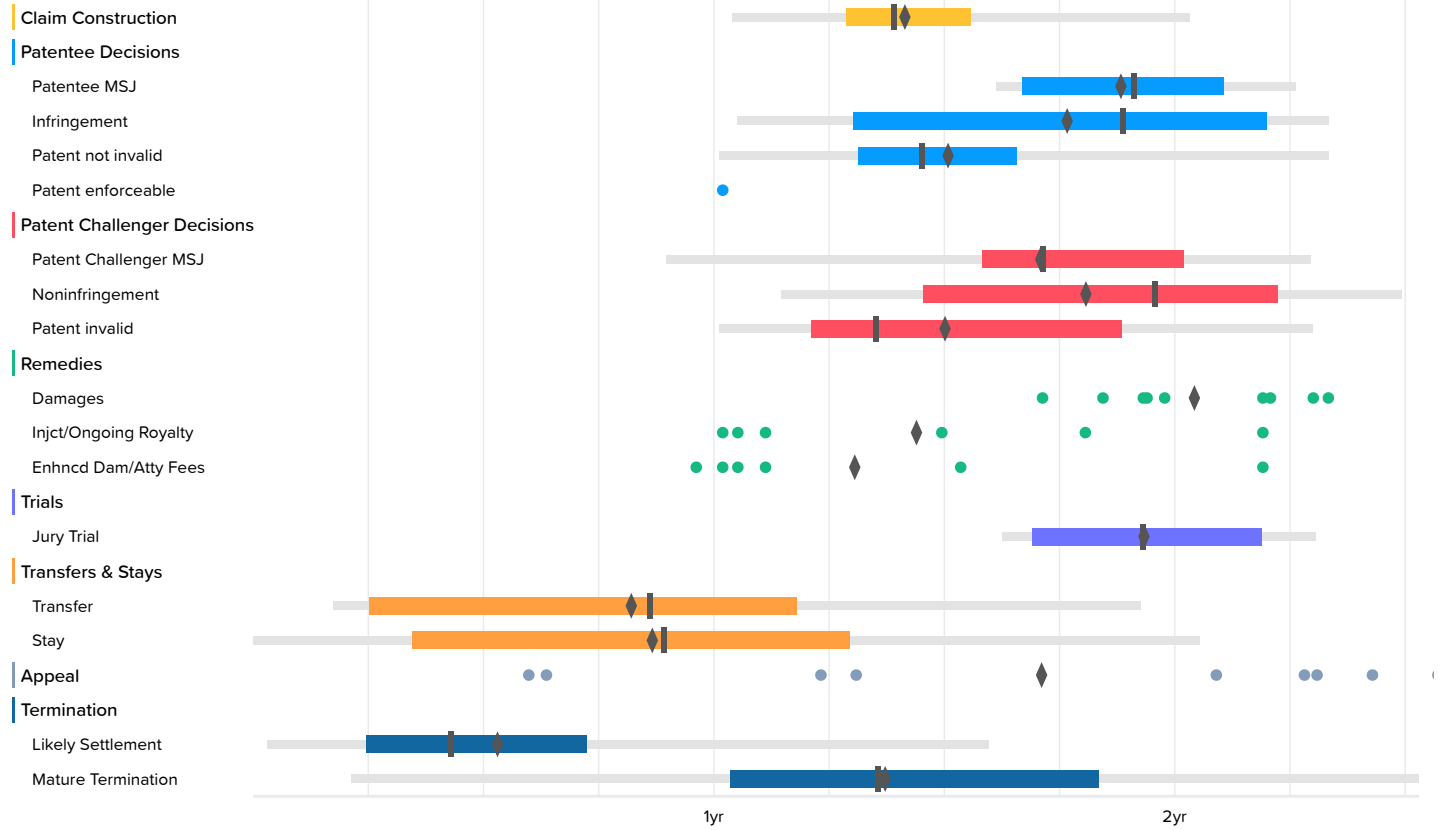


U.S. District Courts

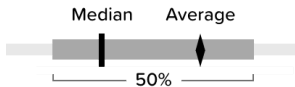
	Occurrences	Minimum	2nd Percentile	First Quartile	Median	Third Quartile	98th Percentile	Maximum	Average
Claim Construction	188	0.4	7.8	11.4	14.1	16.9	26.7	30.1	14.4
Patentee MSJ	38	3.1	10.1	16.9	19.1	24.2	33.4	33.4	19.7
Infringement	44	1.1	2.3	13.6	20.6	27.8	50.1	50.1	21.5
Patent not invalid	215	1.1	7.5	11.5	15.4	20.1	34.3	50.1	16.6
Patent enforceable	11	1.1	3.0	12.2	19.6	24.0	34.0	34.0	18.0
Patent Challenger MSJ	79	5.9	10.8	16.3	18.8	21.9	31.1	35.4	19.4
Noninfringement	39	5.9	10.5	15.1	19.7	26.1	34.3	34.3	20.6
Patent invalid	57	3.8	8.2	11.4	13.4	19.8	26.9	27.6	15.1
Patent unenforceable	1	31.4						31.4	31.4
Damages	35	2.3	11.9	20.0	23.2	28.5	50.1	50.1	25.1
TRO/Prelim Injct	2	24.2			30.4			36.6	30.4
Injct/Ongoing Royalty	21	1.1	2.3	5.6	12.6	15.9	30.6	30.6	12.6
Enhncd Dam/Atty Fees	16	2.3	7.2	11.7	13.0	20.5	30.6	30.6	15.0
Sanctions	6	8.9			14.0			24.2	14.6
Jury Trial	41	14.3	16.0	18.7	21.7	24.8	33.4	33.4	21.6
Bench Trial	7	19.6			23.4			30.5	25.1
Transfer	90	0.6	2.2	7.2	9.6	12.2	23.1	27.4	9.8
Stay	236	0.0	1.0	6.2	10.9	16.4	34.3	38.7	12.2
Appeal	39	1.2	7.1	24.4	28.5	34.3	60.3	60.3	27.4
Likely Settlement	1496		0.5	3.1	5.5	9.3	21.6	63.8	7.0
Mature Termination	376	0.6	2.8	12.9	17.5	23.7	61.9	61.9	19.6

Judges: Rodney Gilstrap Case Filing Date: On or After Jan. 1st, 2022

U.S. District Courts (1863 cases)



The milestones shown in this chart are based on Docket Navigator's classification of orders matching the search criteria specified to generate the report. Each box plot shows the time between the filing of the complaint and the named milestone. The left and right ends of the box labeled 50% are respectively the first- and third-quartiles. The lighter line shows events between the 2nd and 98th percentile. The remaining points are outliers, represent at most 4% of the data, and are not shown, however, the true minimum and maximum are included in the accompanying table and the mean includes outliers. Fewer than ten events occurring in a category are shown as dots instead of a box plot.



U.S. District Courts

	Occurrences	Minimum	2nd Percentile	First Quartile	Median	Third Quartile	98th Percentile	Maximum	Average
Claim Construction	73	0.4	12.5	15.5	16.7	18.7	24.4	30.1	17.0
Patentee MSJ	13	17.5	19.3	20.0	23.0	25.3	27.1	27.1	22.7
Infringement	14	12.2	12.6	15.6	22.7	26.4	28.0	28.0	21.3
Patent not invalid	78	10.3	12.1	15.8	17.4	19.9	28.0	29.9	18.2
Patent enforceable	1	12.2						12.2	12.2
Patent Challenger MSJ	25	5.9	10.8	19.0	20.6	24.2	27.5	27.5	20.6
Noninfringement	15	5.9	13.7	17.4	23.5	26.7	29.9	29.9	21.8
Patent invalid	21	9.6	12.1	14.5	16.2	22.6	27.6	27.6	18.1
Damages	9	20.6			23.7			28.0	24.6
Injct/Ongoing Royalty	6	12.2			15.6			26.3	17.3
Enhncd Dam/Atty Fees	6	11.5			13.0			26.3	15.7
Jury Trial	13	18.9	19.5	20.3	23.2	26.3	27.7	27.7	23.3
Transfer	41	0.6	2.1	3.0	10.3	14.1	23.1	23.1	9.9
Stay	119	0.0		4.1	10.7	15.5	24.7	27.0	10.5
Appeal	9	7.2			25.1			30.9	20.6
Likely Settlement	962	0.1	0.4	2.9	5.1	8.7	19.1	31.0	6.4
Mature Termination	128	0.6	2.6	12.4	16.3	22.0	30.4	31.4	16.5