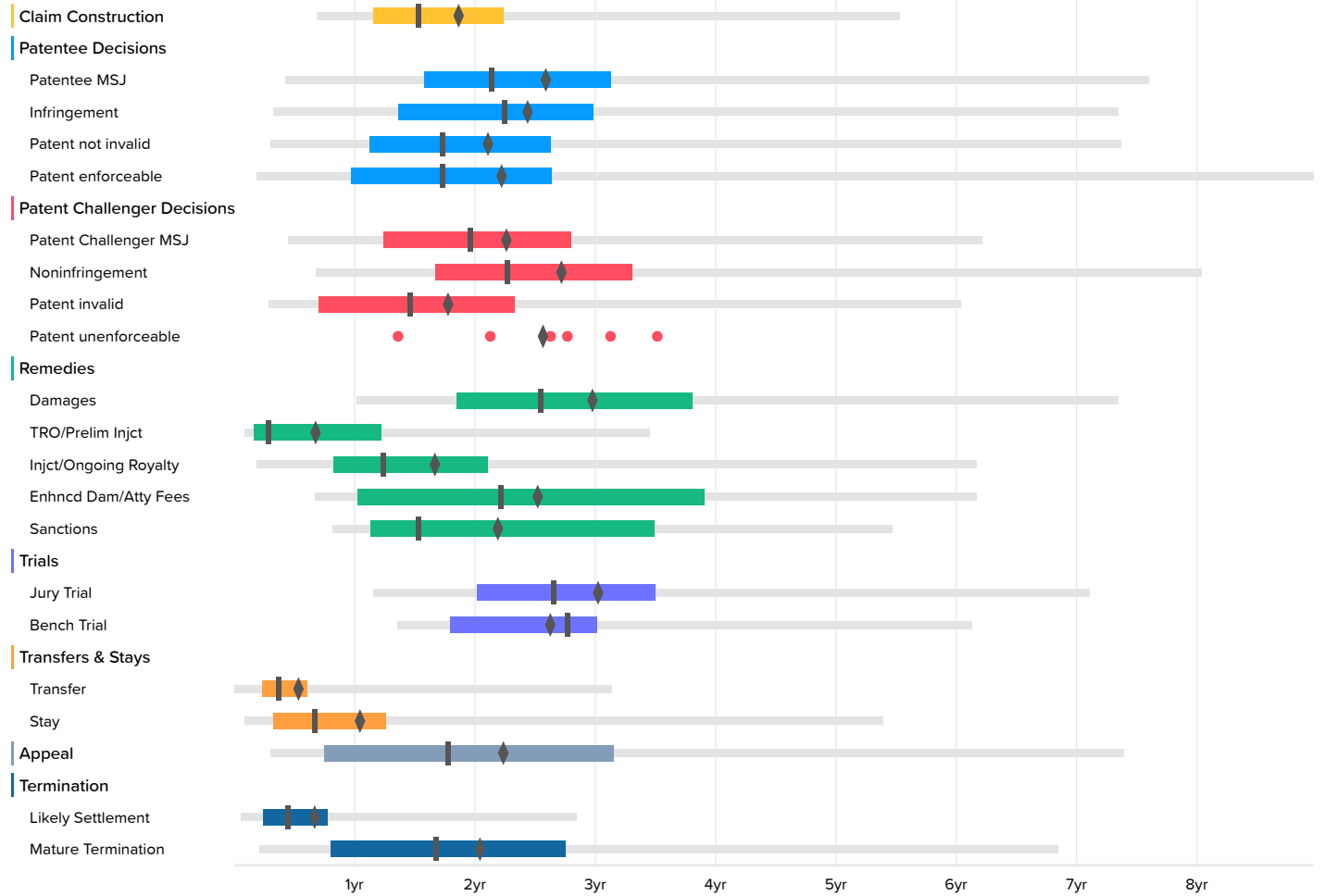


Time to Milestones

Courts: California Northern District (all districts) Case Filing Date: On or After Jan. 1st, 2008

U.S. District Courts (3493 cases)



U.S. District Courts

	Occurrences	Minimum	2nd Percentile	First Quartile	Median	Third Quartile	98th Percentile	Maximum	Average
Claim Construction	402	-3.4	8.2	13.9	18.3	26.8	66.3	124.9	22.6
Patentee MSJ	115		5.0	18.9	25.6	37.5	91.0	107.4	31.3
Infringement	102	1.7	3.9	16.3	26.9	35.7	88.0	116.1	29.5
Patent not invalid	207	1.7	3.6	13.4	20.7	31.5	88.3	124.3	25.5
Patent enforceable	41	1.7	2.2	11.7	20.7	31.6	107.4	107.4	26.9
Patent Challenger MSJ	282		5.3	14.8	23.5	33.5	74.4	124.3	27.3
Noninfringement	220	1.1	8.2	20.0	27.2	39.6	96.2	126.2	32.8
Patent invalid	319	1.0	3.4	8.4	17.5	27.9	72.3	97.2	21.5
Patent unenforceable	6	16.3			32.3			42.1	31.0
Damages	61	10.6	12.2	22.2	30.5	45.6	88.0	128.1	35.9
TRO/Prelim Injct	14	0.7	1.0	1.9	3.4	14.6	41.3	41.3	8.4
Injct/Ongoing Royalty	84	1.0	2.2	9.9	14.9	25.2	73.9	80.4	20.2
Enhncd Dam/Atty Fees	52	4.9	8.1	12.3	26.5	46.8	73.9	74.2	30.5
Sanctions	22	9.0	9.8	13.5	18.3	41.8	65.5	65.5	26.5
Jury Trial	65	12.6	13.8	24.2	31.8	41.9	85.1	116.1	36.5
Bench Trial	11	13.6	16.2	21.5	33.1	36.1	73.4	73.4	31.7
Transfer	85	0.0		2.8	4.4	7.2	37.5	60.8	6.7
Stay	794		1.0	3.9	8.0	15.1	64.6	154.1	12.8
Appeal	400	-19.7	3.6	9.0	21.3	37.8	88.5	129.3	27.0
Likely Settlement	1987	0.0	0.6	2.9	5.3	9.2	34.1	93.0	8.3
Mature Termination	1303	1.0	2.5	9.6	20.1	32.9	82.0	154.1	24.7