



US 20170020877A1

(19) **United States**

(12) **Patent Application Publication**
Grigoriadis

(10) **Pub. No.: US 2017/0020877 A1**

(43) **Pub. Date: Jan. 26, 2017**

(54) **CRF1 RECEPTOR ANTAGONISTS FOR THE
TREATMENT OF CONGENITAL ADRENAL
HYPERPLASIA**

(71) Applicant: **NEUROCRINE BIOSCIENCES,
INC.**, San Diego, CA (US)

(72) Inventor: **Dimitri E. Grigoriadis**, San Diego, CA
(US)

(21) Appl. No.: **15/113,362**

(22) PCT Filed: **Jan. 21, 2015**

(86) PCT No.: **PCT/US2015/012315**

§ 371 (c)(1),

(2) Date: **Jul. 21, 2016**

Related U.S. Application Data

(60) Provisional application No. 61/929,941, filed on Jan. 21, 2014, provisional application No. 61/981,033, filed on Apr. 17, 2014, provisional application No. 62/069,155, filed on Oct. 27, 2014.

Publication Classification

(51) **Int. Cl.**
A61K 31/519 (2006.01)

(52) **U.S. Cl.**
CPC **A61K 31/519** (2013.01)

(57) **ABSTRACT**

CRF₁ receptor antagonists have the potential to directly inhibit ACTH release in patients with CAH and thereby allow normalization of androgen production while using lower, more physiologic doses of hydrocortisone, and thus reducing treatment-associated side effects.

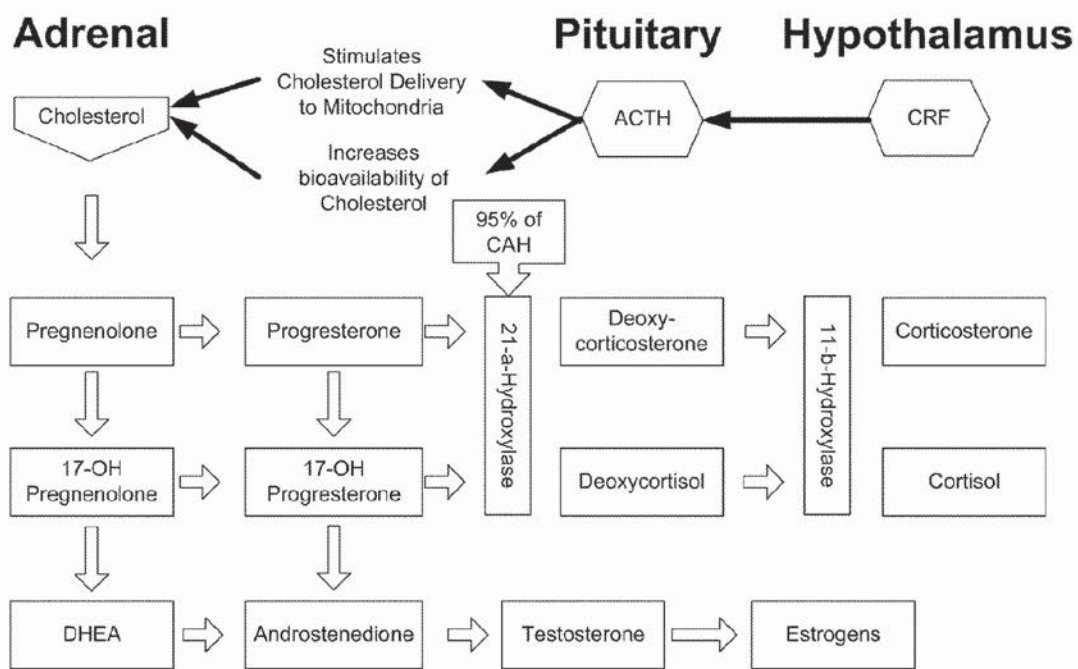


FIG. 1

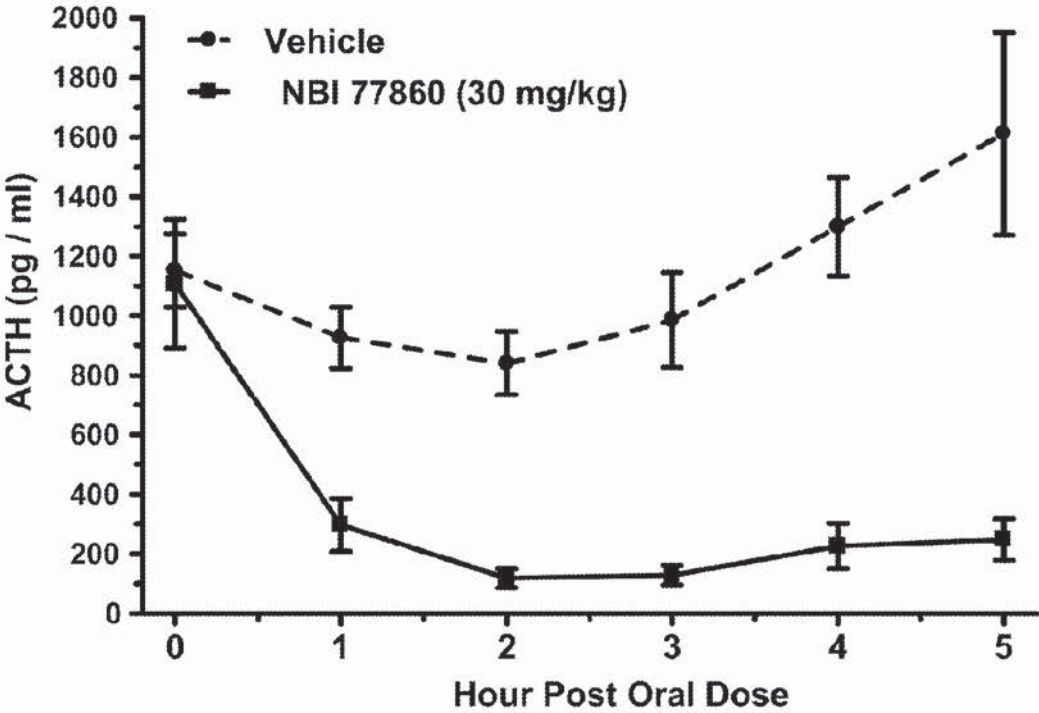


FIG. 2

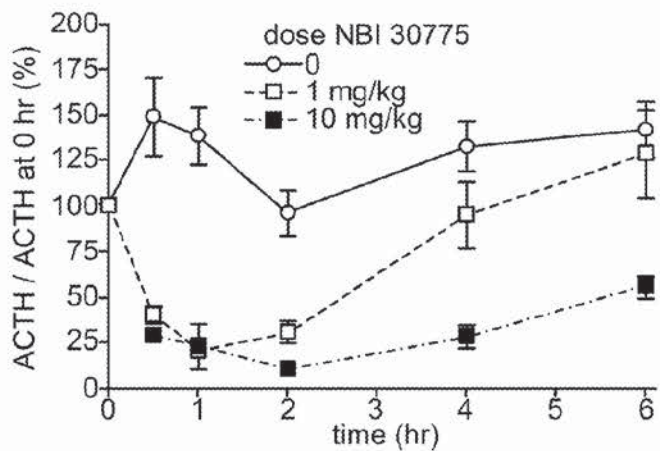


FIG. 3A

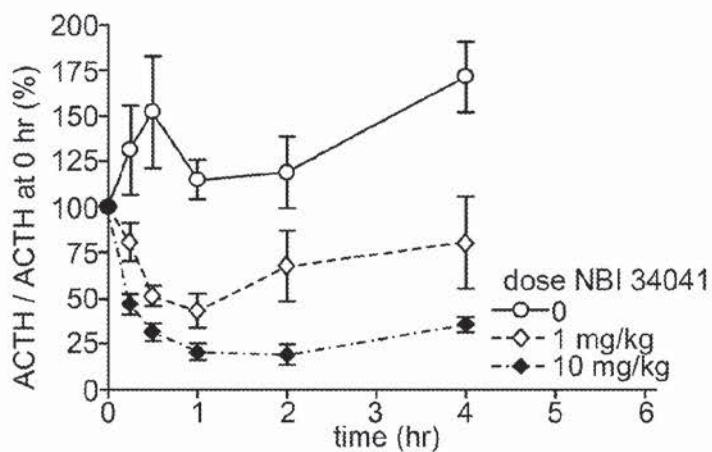


FIG. 3B

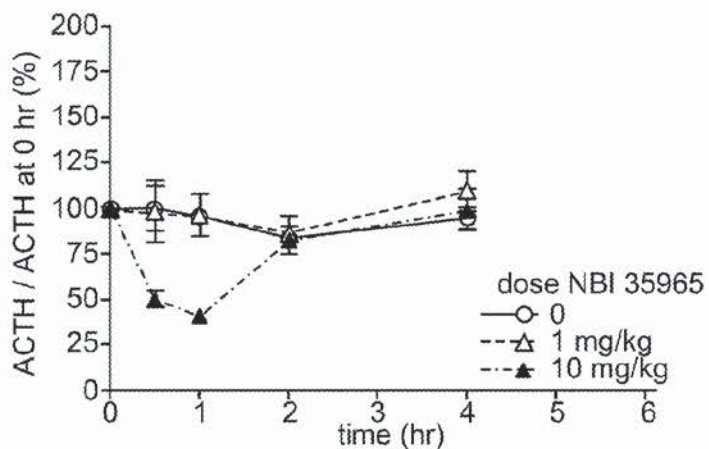


FIG. 3C

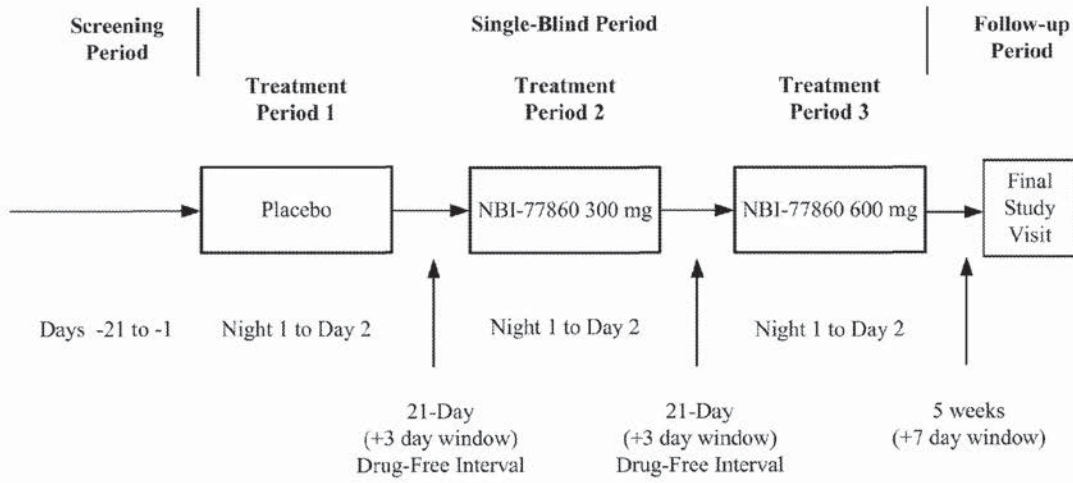


FIG. 4

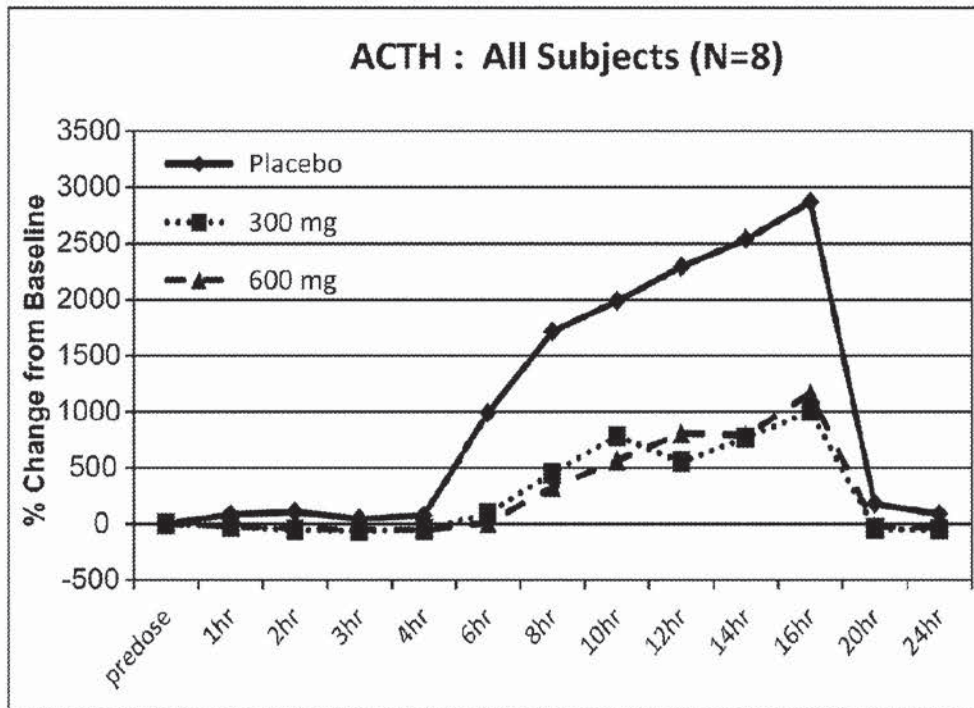
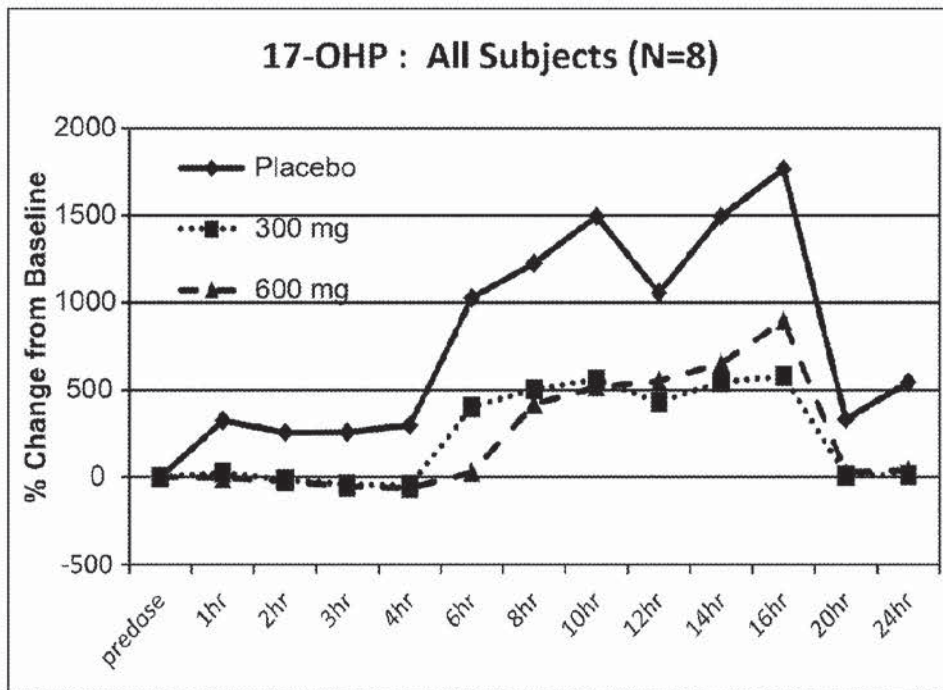


FIG. 5

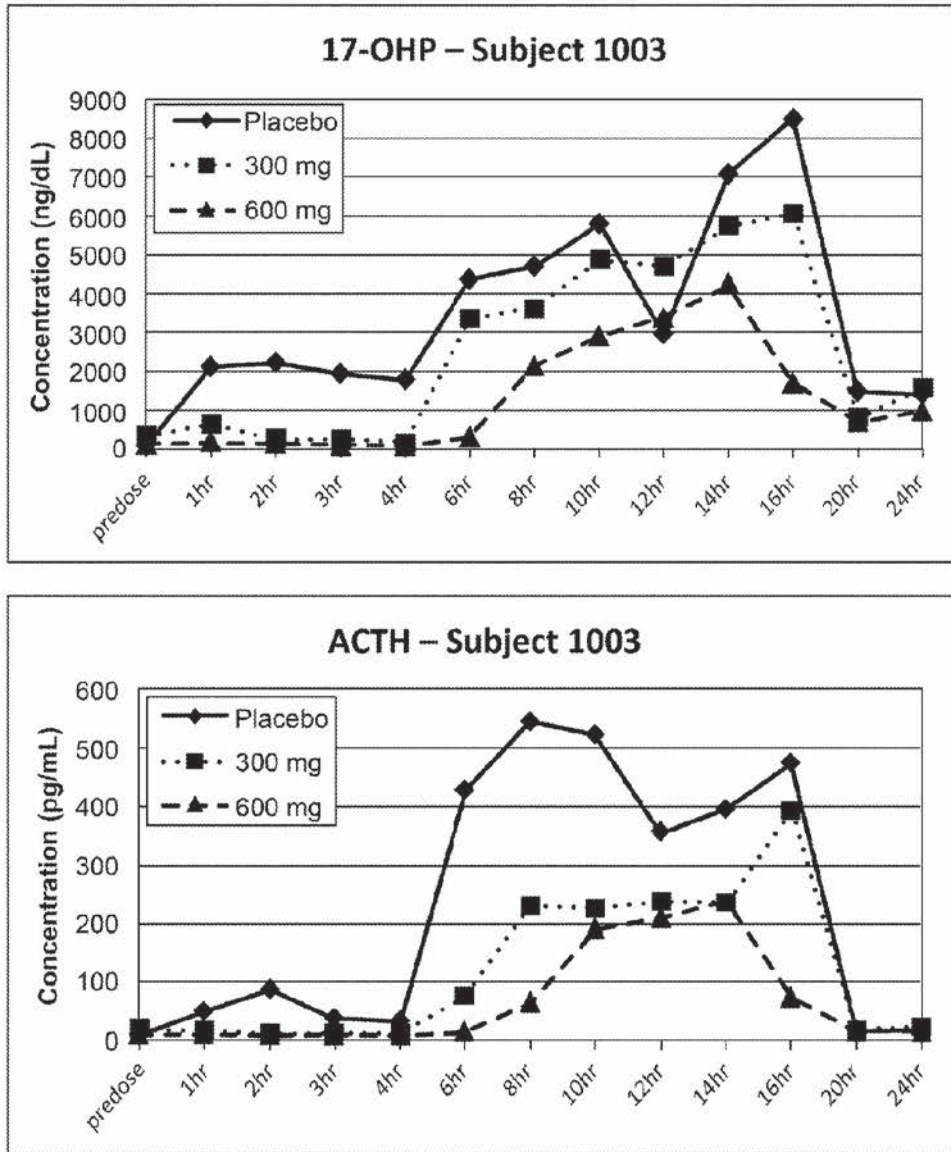


FIG. 6

CRF₁ RECEPTOR ANTAGONISTS FOR THE TREATMENT OF CONGENITAL ADRENAL HYPERPLASIA

BACKGROUND

[0001] Technical Field

[0002] Compositions and methods for treating congenital adrenal hyperplasia are described herein.

[0003] Description of the Related Art

[0004] Congenital adrenal hyperplasia (CAH) is a group of autosomal recessive genetic disorders that result in little or no cortisol biosynthesis. The most frequent form of the disease is 21-hydroxylase deficiency caused by mutations in the CYP21A2 gene located on chromosome 6p21, which accounts for approximately 95% of CAH cases (see, e.g., Speiser et al., *Int. J. Pediatr. Endocrinol.* 2010:494173 (2010) for a review). These mutations can range from complete loss of enzyme activity required for synthesis of cortisol in the adrenal cortex to a spectrum of partial loss, which results in disease severity that is a direct consequence of a specific mutation. This continuum of 21-hydroxylase deficiency has been broadly classified into salt-wasting and simple-virilizing forms, grouped as classical CAH, and the milder form known as non-classic CAH (NCCAH) or “late-onset” CAH, which is usually diagnosed in late childhood or early adulthood. Non-classic CAH patients are either homozygous or compound heterozygotes, often with a classical CAH allele. These patients have sufficient enzyme activity (>20-50% of normal) such that they do not have salt-wasting or cortisol deficiency and have normal genitalia at birth, and many remain asymptomatic throughout life (Trapp et al., *Steroids* 77(4):342-46 (2012)). In the less frequent form of the disease, which accounts for 5% of cases, mutation of the 11 β -hydroxylase gene CYP11B1 results in CAH (11 β -OH CAH).

[0005] Both genetic mutations result in congenital adrenal hyperplasia, cortisol deficiency and excessive adrenocorticotrophic hormone (ACTH) production with overproduction of androgens. These patients require lifelong management with glucocorticoids and the attendant problems associated with such treatment. Accordingly, a significant need exists for treatment regimens to improve the health, well-being, quality of life, and to manage related disorders in patient with CAH.

BRIEF SUMMARY

[0006] Corticotropin-releasing factor (CRF) activates the CRF₁ receptor, a class B G protein-coupled receptor (GPCR). CRF₁ antagonists have the potential to directly inhibit ACTH release in patients with CAH, thereby allowing normalization of androgen production while using lower, more physiologic doses of hydrocortisone, and reducing treatment-associated side effects.

[0007] In one embodiment, a method is provided for treating CAH by administering to a subject in need thereof an effective amount of a CRF₁ antagonist, including (but not limited to) bedtime administration.

[0008] In a more specific embodiment, the CRF₁ antagonist has a dissociation half-life ($t_{1/2}$) in excess of 30 minutes, and in another embodiment in excess of 40 minutes, and in another embodiment in excess of 50 minutes.

[0009] Embodiment 1. A method for treating Congenital Adrenal Hyperplasia (CAH) by administering to a subject in

need thereof a CRF₁ receptor antagonist having a dissociation half-life in excess of 30 minutes.

[0010] Embodiment 2. The method of Embodiment 1 wherein the CRF₁ receptor antagonist has a dissociation half-life in excess of 40 minutes.

[0011] Embodiment 3. The method of Embodiment 1 wherein the CRF₁ receptor antagonist has a dissociation half-life in excess of 50 minutes.

[0012] Embodiment 4. The method of any one of Embodiments 1-3 wherein the CRF₁ receptor antagonist is Compound I (NBI-77860; 2,5-dimethyl-3-[2-methyl-4-(methyloxy)phenyl]-N-[(1S)-1-(3-methyl-1,2,4-oxadiazol-5-yl)propyl]pyrazolo[1,5-a]pyrimidin-7-amine).

[0013] Embodiment 5. The method of any one of Embodiments 1-3 wherein the CRF₁ receptor antagonist is NBI-30775, NBI-34041, SSR-126374, SSR-125543, antalarmin (N-butyl-N-ethyl-2,5,6-trimethyl-7-(2,4,6-trimethylphenyl)pyrrolo[3,2-e]pyrimidin-4-amine), or DMP904.

[0014] Embodiment 6. The method of any one of Embodiments 1-5 wherein the CRF₁ receptor antagonist is administered at bedtime.

[0015] Embodiment 7. The method of any one of Embodiments 1-6 wherein the CRF₁ receptor antagonist is administered at or before the expected circadian release of ACTH.

[0016] Embodiment 8. The method of Embodiment 7 wherein the CRF₁ receptor antagonist is administered 3-4 hours before the expected circadian release of ACTH.

[0017] Embodiment 9. A method for reducing 17-OHP and ACTH levels in a subject who has Congenital Adrenal Hyperplasia (CAH), said method comprising administering to the subject a CRF₁ receptor antagonist at bedtime.

[0018] Embodiment 10. The method of Embodiment 9, wherein the CRF₁ receptor antagonist is administered at or before the expected circadian release of ACTH.

[0019] Embodiment 11. The method of Embodiment 9 or Embodiment 10, wherein the CRF₁ receptor antagonist is administered 3-4 hours before the expected circadian release of ACTH.

[0020] Embodiment 12. The method of any one of Embodiments 9-11, wherein the CRF₁ receptor antagonist is Compound I (NBI-77860; 2,5-dimethyl-3-[2-methyl-4-(methyloxy)phenyl]-N-[(1S)-1-(3-methyl-1,2,4-oxadiazol-5-yl)propyl]pyrazolo[1,5-a]pyrimidin-7-amine).

[0021] Embodiment 13. The method of any one of Embodiments 9-11, wherein the CRF₁ receptor antagonist is NBI-30775, NBI-34041, SSR-126374, SSR-125543, antalarmin (N-butyl-N-ethyl-2,5,6-trimethyl-7-(2,4,6-trimethylphenyl)pyrrolo[3,2-e]pyrimidin-4-amine), or DMP904.

[0022] Embodiment 14. A CRF₁ receptor antagonist for use in treating Congenital Adrenal Hyperplasia (CAH), wherein the CRF₁ receptor antagonist has a dissociation half-life in excess of 30 minutes.

[0023] Embodiment 15. The CRF₁ receptor antagonist of 14, wherein the CRF₁ receptor antagonist has a dissociation half-life in excess of 40 minutes.

[0024] Embodiment 16. The CRF₁ receptor antagonist of Embodiment 14, wherein the CRF₁ receptor antagonist has a dissociation half-life in excess of 50 minutes.

[0025] Embodiment 17. The CRF₁ receptor antagonist of any one of Embodiments 14-16, wherein the CRF₁ receptor antagonist is Compound I (NBI-77860; 2,5-dimethyl-3-[2-methyl-4-(methyloxy)phenyl]-N-[(1S)-1-(3-methyl-1,2,4-oxadiazol-5-yl)propyl]pyrazolo[1,5-a]pyrimidin-7-amine).

[0026] Embodiment 18. The CRF₁ receptor antagonist of any one of Embodiments 14-16, wherein the CRF₁ receptor antagonist is NBI-30775, NBI-34041, SSR-126374, SSR-125543, antalarmin (N-butyl-N-ethyl-2,5,6-trimethyl-7-(2,4,6-trimethylphenyl)pyrrolo[3,2-e]pyrimidin-4-amine), or DMP904.

[0027] Embodiment 19. The CRF₁ receptor antagonist of any one of Embodiments 14-18, wherein the CRF₁ receptor antagonist is suitable for administration at bedtime.

[0028] Embodiment 20. The CRF₁ receptor antagonist of any one of Embodiments 14-19, wherein the CRF₁ receptor antagonist is suitable for administration at or before the expected circadian release of ACTH.

[0029] Embodiment 21. The CRF₁ receptor antagonist of any one of Embodiments 14-20, wherein the CRF₁ receptor antagonist is suitable for administration 3-4 hours before the expected circadian release of ACTH.

[0030] In other embodiments, the methods and uses described above and herein further comprise reducing the amount of a glucocorticoid or mineralocorticoid by at least 10%, 15%, 20%, 30%, 40%, 50%, 60% from the recommended daily dose of GC (such as hydrocortisone (HC), prednisone, prednisolone, dexamethasone, or fludrocortisone) administered to a full grown subject (e.g., a human subject) who has CAH. In other embodiments, the methods and uses described above and herein further comprise reducing the amount of a glucocorticoid or mineralocorticoid by at least 10%, 15%, 20%, 30%, 40%, 50%, 60% from the recommended daily dose of GC (e.g., hydrocortisone) or mineralocorticoid (e.g., fludrocortisone) administered to a growing subject (e.g., a human subject) who has CAH.

[0031] These and other embodiments will be apparent upon reference to the following detailed description. To this end, various references are set forth herein that describe in more detail certain background information, procedures, compounds and compositions, and are each hereby incorporated by reference in their entirety.

[0032] Terms not specifically defined herein should be given the meanings that would be given to them by one of skill in the art in light of the disclosure and the context. As used in the specification, however, unless specified to the contrary, the terms have the meaning indicated. Reference throughout this specification to “one embodiment” or “an embodiment” means that a particular feature, structure or characteristic described in connection with the embodiment is included in at least one embodiment. Thus, the appearances of the phrases “in one embodiment” or “in an embodiment” in various places throughout this specification are not necessarily all referring to the same embodiment. Furthermore, the particular features, structures, or characteristics may be combined in any suitable manner in one or more embodiments.

[0033] Also, as used in this specification and the appended claims, the singular forms “a,” “an,” and “the” include plural referents unless the content clearly dictates otherwise. Thus, for example, reference to “a non-human animal” may refer to one or more non-human animals, or a plurality of such animals, and reference to “a cell” or “the cell” includes reference to one or more cells and equivalents thereof (e.g., plurality of cells) known to those skilled in the art, and so forth. When steps of a method are described or claimed, and the steps are described as occurring in a particular order, the description of a first step occurring (or being performed) “prior to” (i.e., before) a second step has the same meaning

if rewritten to state that the second step occurs (or is performed) “subsequent” to the first step. The term “about” when referring to a number or a numerical range means that the number or numerical range referred to is an approximation within experimental variability (or within statistical experimental error), and thus the number or numerical range may vary between 1% and 15% of the stated number or numerical range. It should also be noted that the term “or” is generally employed in its sense including “and/or” unless the content clearly dictates otherwise. The term, “at least one,” for example, when referring to at least one compound or to at least one composition, has the same meaning and understanding as the term, “one or more.”

BRIEF DESCRIPTION OF THE DRAWINGS

[0034] FIG. 1 shows a schematic of steroid synthetic pathways in the adrenal gland. The most common form of CAH is caused by 21-hydroxylase (also called 21- α hydroxylase) deficiency resulting in a decrease of cortisol and increase in androgens such as testosterone and estrogen. A more rare type of classical CAH is 11 β -hydroxylase deficiency.

[0035] FIG. 2 presents a graph illustrating the effect of Compound I (NBI-77860) on ACTH concentration in adrenalectomized rats. Rats received 30 mg/kg of Compound I (NBI-77860) orally. Data are presented as mean plasma concentration of ACTH (\pm SEM).

[0036] FIGS. 3A-C present graphs illustrating the effect of CRF₁ receptor antagonists, differentiated by their dissociation half-life, on ACTH concentration in adrenalectomized rats.

[0037] FIG. 4 presents the study design schematic for the clinical trial described in Example 6 that was designed to assess the safety, tolerability and plasma exposure of NBI-77860, as well as the effect of this compound on endogenous levels of HPA (hypothalamic-pituitary-adrenal) axis hormones.

[0038] FIG. 5 presents the data for mean 17-OHP (upper panel) and ACTH levels (lower panel) throughout the 24-hour postdose period for the clinical trial described in Example 6.

[0039] FIG. 6 presents the response of a specific individual subject for 17-OHP (upper panel) and ACTH levels (lower panel) following administration of 300 mg and 600 mg NBI-77860 and placebo over time.

DETAILED DESCRIPTION

[0040] As described herein, CRF₁ receptor antagonists have been found to directly inhibit ACTH release in patients with CAH and thereby allow normalization of androgen production. Administration of a CRF₁ receptor antagonist permits use of lower, more physiologic doses of hydrocortisone in subjects with CAH and thus reduces treatment-associated side effects.

[0041] Newborn screening for CAH is performed by immunoassay to measure 17-OHP levels in heel-stick capillary blood specimens obtained within the first 72 hours of life. The blood sample is analyzed for 17-OHP by commercially available dissociation-enhanced lanthanide fluorimunoassay (DELFA; PerkinElmer, Waltham Massachusetts) (White et al., J. Pediatr. 163:10-12 (2013)).

[0042] Second-tier screening tests utilizing biochemical and molecular genetic testing methods, performed between

8 and 14 days of life, are employed by nine states in the United States and strongly recommended by an additional 5 states. The biochemical method includes immunoassay with organic solvent extraction or liquid chromatography followed by tandem mass spectrometry to measure steroid ratios of 17-OHP, androstenedione, and 21-deoxycortisol to cortisol (see, e.g., Speiser et al., *Int. J. Pediatr. Endocrinol.* 2010:494173, 2010). The genetic screen looks for CYP21A2 mutations that are associated with CAH. While not widely employed in the U.S., the addition of a second screening could potentially improve the sensitivity of the overall screening process, where sensitivity of the first screen alone is approximately 72%.

[0043] In absence of results from the newborn screening, female infants with classical CAH are typically identified due to the presence of ambiguous genitalia. Males have normal genitalia at birth and therefore are not diagnosed unless newborn screening is conducted or other medical complications come to attention. Infants who are not initially diagnosed with CAH and suffer from the salt-wasting form of the disease are later diagnosed in the setting of poor weight gain, vomiting, hyperkalemia and hyponatremia within the first few weeks of life.

[0044] Treatment of CAH is based on normalization of hormone and steroid levels using a variety of medications from diagnosis in infancy through adulthood. Glucocorticoids are the current standard treatment in CAH and are used both to correct the endogenous cortisol deficiency and for reducing the elevated ACTH levels from the pituitary, which drives increased androgen production. Unlike the treatment of Addison's disease (adrenal insufficiency), in which cortisol replacement is sufficient, the treatment of CAH must also reduce ACTH production, to control the subsequent androgen excess as well. Thus, the goals of glucocorticoid treatment include cortisol replacement and suppression of ACTH to prevent virilization and menstrual disturbances in women and to inhibit testicular adrenal rest tumors in men. Mineralocorticoid replacement is needed to achieve normal plasma renin activity for maintenance of regular blood pressure, electrolyte balance, and volume status in those patients with the salt-wasting form of CAH.

[0045] The regimen of glucocorticoid treatment must support normal physiology and also ensure that sufficient cortisol is available during events that may elicit a strong stress response (e.g., intercurrent illness, exercise, hypotension). Careful monitoring is also necessary to avoid the development of iatrogenic Cushing's syndrome due to glucocorticoid overtreatment in an effort to adequately suppress androgen production, or Addisonian syndrome due to under-treatment. Overtreatment with mineralocorticoids may cause hypertension while under-treatment may lead to low blood pressure, salt loss, fatigue and increased requirements for glucocorticoids. Typical laboratory tests for monitoring treatment efficacy include measurement of plasma concentrations of 17-OHP, androstenedione, testosterone, renin activity, and electrolytes.

[0046] Adult patients with CAH have an increased prevalence of risk factors for cardiovascular disease including obesity, hypertension, and insulin resistance (see, e.g., Kim et al., *Semin. Reprod. Med.* 27(4):316-21 (2009)). A study of a large cohort of pediatric and adult CAH patients (n=244) demonstrated that patients are prescribed a variety of glucocorticoid treatment regimens yet frequently suffer from poor hormonal control and the aforementioned adverse

outcomes (see, e.g., Finkelstein et al., *J. Clin. Endocrinol. Metab.* 97(12):4429-38 (2012)).

[0047] Treatment of CAH includes efforts to normalize the cortisol deficiency with glucocorticoids (usually hydrocortisone in children but often more potent agents with narrow therapeutic indices, such as dexamethasone, in adults) and, if necessary for salt-wasting, mineralocorticoids (usually fludrocortisone). The glucocorticoid doses required to achieve sufficient suppression of excess androgens, however, are usually well above the normal physiologic dose used for cortisol replacement alone as in patients with Addison's disease. This increased exposure to glucocorticoids can lead to iatrogenic Cushing's syndrome, increased cardiovascular risk factors, glucose intolerance, and decreased bone mineral density in CAH patients (see, e.g., Elneave et al., *J. Pediatr. Endocrinol. Metab.* 21:1155-62 (2008); King et al., *J. Clin. Endocrinol. Metab.* 91(3):8656-59 (2006); Migeon et al., *Endocrinol. Metab. Clin. North Am.* 30:193-206 (2001)).

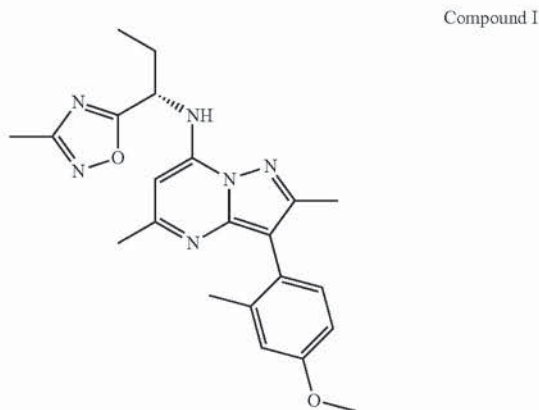
[0048] Corticotropin-releasing factor (CRF) was isolated from ovine hypothalamus and identified as a 41-amino acid peptide. CRF has been found to produce profound alterations in endocrine, nervous, and immune system function. CRF is believed to be the major physiological regulator of the basal and stress-induced release of adrenocorticotropic hormone ("ACTH"), β -endorphin, and other pro-opiomelanocortin ("POMC")-derived peptides from the anterior pituitary (see, e.g., Vale et al., *Science* 213:1394-1397, 1981). Secretion of CRF causes release of ACTH from corticotrophs in the anterior pituitary via binding to the CRF₁ receptor, a member of the class B family of G-protein coupled receptors.

[0049] Due to the physiological significance of CRF, the development of biologically-active small molecules having significant CRF₁ receptor binding activity and which are capable of antagonizing the CRF₁ receptor remains a desirable goal and has been the subject of ongoing research and development for the treatment of anxiety, depression, irritable bowel syndrome, post-traumatic stress disorder, and substance abuse.

[0050] The pituitary hormone ACTH, under the control of hypothalamic corticotropin-releasing factor (CRF), stimulates uptake of cholesterol and drives the synthesis of pregnenolone initiating steroidogenesis in the adrenal gland (see FIG. 1). The adrenal cortex is comprised of three zones, which produce distinct classes of hormones many of which are driven by ACTH mobilizing cholesterol through this pathway. Deficiencies in these enzymes as a result of mutation or deletion cause the substrate concentrations to increase. In the most common form of CAH resulting from mutations or deletions in the 21-hydroxylase gene (CYP21A2), potent androgens are produced by the adrenal because of the accumulation of the steroid precursors, progesterone and 17-hydroxyprogesterone (17-OHP). Plasma levels of 17-OHP can reach 10-1000 times the normal concentration in these cases. These increases result in the overproduction of androgens, specifically androstenedione, testosterone, and dihydroxytestosterone causing virilization in females. In addition, 21-hydroxylase deficiency in CAH causes insufficient biosynthesis of glucocorticoids and mineralocorticoids, specifically cortisol and aldosterone. Cortisol is a critical negative feedback regulator of hypothalamic CRF secretion and pituitary ACTH release. The lack of glucocorticoid synthesis and release eliminates the restraint

on the hypothalamus and pituitary, which causes ACTH levels to increase. The excessive ACTH stimulation causes hypertrophy of the zona fasciculata and zona reticularis resulting in adrenal hyperplasia.

[0051] In an embodiment, a CRF₁ receptor antagonist useful for the treatment of CAH is NBI-77860, 2,5-dimethyl-3-[2-methyl-4-(methoxy)phenyl]-N-[(1S)-1-(3-methyl-1,2,4-oxadiazol-5-yl)propyl]pyrazolo[1,5-a]pyrimidin-7-amine (also referred to as "Compound I" herein), and which has the following structure.



[0052] Compound I is a potent CRF₁ antagonist possessing a binding pK_i=8.2 (see, e.g., Tellew et al., *Bioorg. Med. Chem. Lett.* 20:7259, 2010 and Int'l. Patent Appl. Publ. No. WO 2006/044958, both of which references are incorporated by reference herein in their entirety). As described herein, Compound I has potent ACTH lowering effects as shown in adrenalectomized rats.

[0053] In another embodiment, the CRF₁ receptor antagonist useful for the treatment of CAH is a small molecule antagonist as described in U.S. Pat. No. 6,586,456, U.S. Pat. No. 6,806,282, U.S. Pat. No. 6,531,475, U.S. Pat. No. 6,664,261, U.S. Pat. No. 6,610,678, WO 98/08846, WO 98/11075, WO 99/10350, WO 2000/059888, WO 2006/

044821, WO 2006/102194, WO 2006/107784, WO 2006/116412, WO 2006/126718, WO 2007/069565, WO 2007/069671, WO 2008/036541, WO 2008/036579, WO 2008/051533, WO 2008/082003, WO 2008/083070, WO 2008/136377, WO 2009/008552, WO 2009/144632, WO 2010/014280, WO 2010/014687, WO 2010/015628, WO 2010/015655, WO 2010/062718, WO 2010/096426, WO 2011/043387, WO 2011/092293, WO 2011/095450, WO 2011/092290, and WO 2011/043381.

[0054] In still another embodiment, the CRF₁ receptor antagonist is NBI-30775, CP-316,311, pexacerfont, emicerfont, SSR-125543 [4-(2-chloro-4-methoxy-5-methylphenyl)-N-[(1S)-2-cyclopropyl-1-(3-fluoro-4-methylphenyl)ethyl]-5-methyl-N-(2-propyn-1-yl)-2-thiazolamine], SSR-126374, ONO-2333, NBI-34041, JNJ-19567470, GSK586529, PF-00572778, CP-376395, antalarmin (N-butyl-N-ethyl-2,5,6-trimethyl-7-(2,4,6-trimethylphenyl)pyrrolo[3,2-e]pyrimidin-4-amine), and DMP904.

[0055] In yet another embodiment, the CRF₁ receptor antagonist has a dissociation half-life (t_{1/2}) in excess of 30 minutes, and in another embodiment in excess of 40 minutes, and in another embodiment in excess of 50 minutes. The dissociation half-life of a particular CRF₁ receptor antagonist is determined by the technique disclosed in Example 3. Representative CRF₁ receptor antagonists of these embodiments include Compound I, NBI-30775, NBI-34041, SSR-125543A, antalarmin (N-butyl-N-ethyl-2,5,6-trimethyl-7-(2,4,6-trimethylphenyl)pyrrolo[3,2-e]pyrimidin-4-amine), and DMP904.

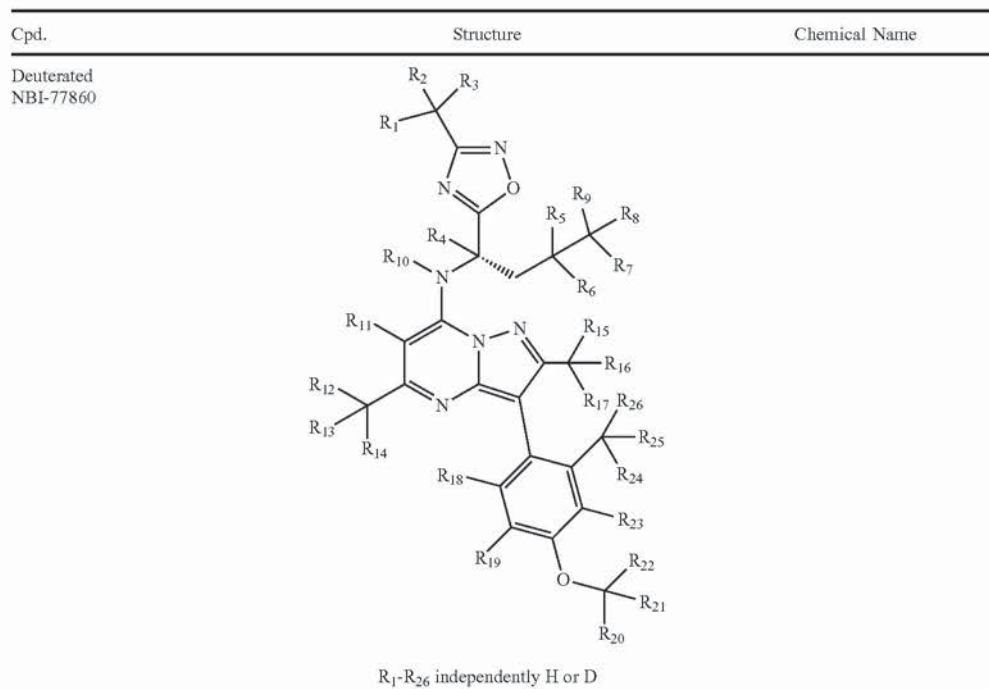
[0056] With respect to the compounds described herein, it should also be understood that when a particular position is designated as hydrogen, that such hydrogen (H) may be replaced with deuterium (D). Incorporation of deuterium in place of hydrogen is known to produce significant effects on the physiological and pharmacological activities of the substituted compound. To this end, it should be understood that deuterium replacement of hydrogen means that the abundance of deuterium at that position is substantially greater than the natural abundance of deuterium. Accordingly, in one embodiment representative compounds include the following.

Cpd.	Structure	Chemical Name
NBI-77860		2,5-dimethyl-3-[2-methyl-4-(methoxy)phenyl]-N-[(1S)-1-(3-methyl-1,2,4-oxadiazol-5-yl)propyl]pyrazolo[1,5-a]pyrimidin-7-amine

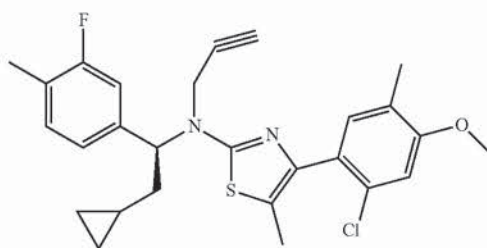
-continued

Cpd.	Structure	Chemical Name
Deuterated NBI-77860		2,5-dimethyl-3-[2-methyl-4-(d ₃ -methoxy)phenyl]-N-[(1S)-1-(3-methyl)-1,2,4-oxadiazol-5-yl]propyl]pyrazolo[1,5-a]pyrimidin-7-amine
Deuterated NBI-77860		2,5-dimethyl-3-[2-methyl-4-(methoxy)phenyl]-N-[(1S)-1-(3-d ₃ -methyl)-1,2,4-oxadiazol-5-yl]propyl]pyrazolo[1,5-a]pyrimidin-7-amine
Deuterated NBI-77860		2,5-dimethyl-3-[2-methyl-4-(d ₃ -methoxy)phenyl]-N-[(1S)-1-(3-d ₃ -methyl)-1,2,4-oxadiazol-5-yl]propyl]pyrazolo[1,5-a]pyrimidin-7-amine

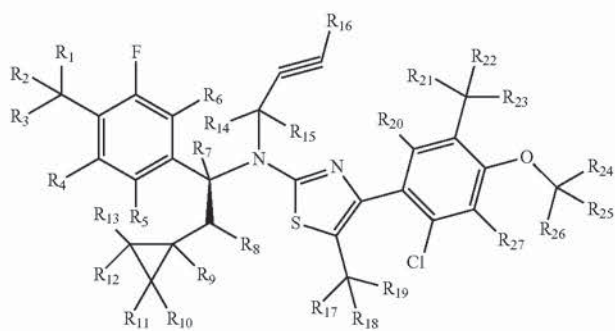
-continued



SSR-125543



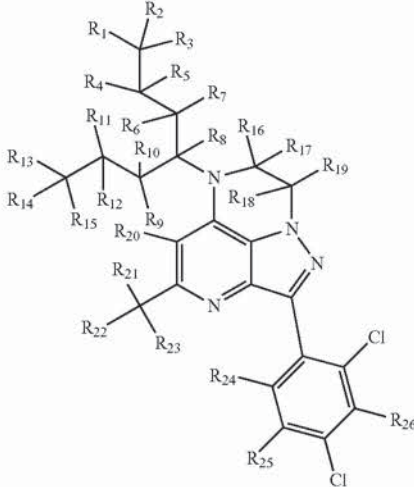
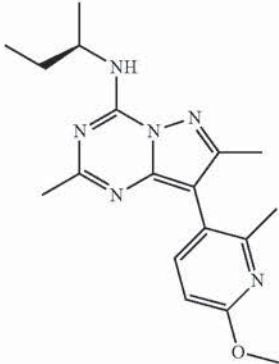
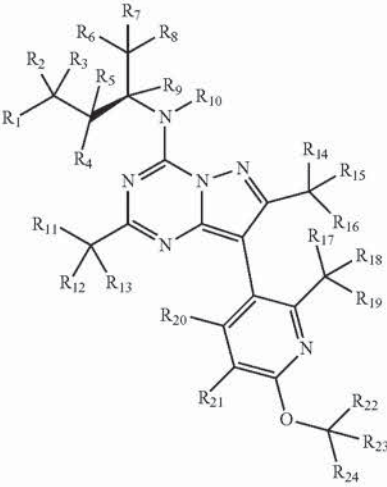
4-(2-chloro-4-methoxy-5-methylphenyl)-N-[(1S)-2-cyclopropyl-1-(3-fluoro-4-methylphenyl)ethyl]-5-methyl-N-(2-propyn-1-yl)-2-thiazolamine

Deuterated
SSR-125543R₁-R₂₇ independently H or D

-continued

Cpd.	Structure	Chemical Name
NBI-30775		5-[7-(dipropylamino)-2,5-dimethylpyrazolo[1,5-a]pyrimidin-3-yl]-N,N,4-trimethylpyridin-2-amine
Deuterated NBI-30775	<p data-bbox="565 1409 786 1430">R₁-R₃₂ independently H or D</p>	
NBI-34041		3-(2,4-dichlorophenyl)-9-(heptan-4-yl)-6-methyl-1,2,5,9-tetraazatricyclo[6.3.1.0 ^{4,12}]dodeca-2,4(12),5,7-tetraene

-continued

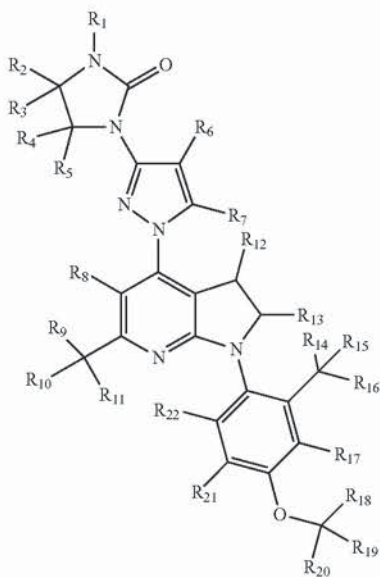
Cpd.	Structure	Chemical Name
Deuterated NBI-34041		
	R ₁ -R ₂₆ independently H or D	
Pexacerfont		N-[(2R)-butan-2-yl]-8-(6-methoxy-2-methylpyridin-3-yl)-2,7-dimethylpyrazolo[1,5-a][1,3,5]triazin-4-amine
Deuterated Pexacerfont		
	R ₁ -R ₂₄ independently H or D	

-continued

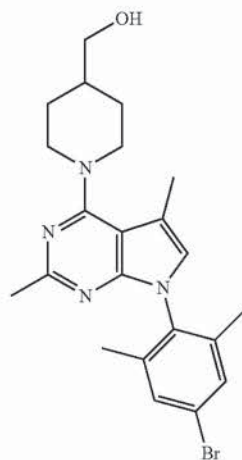
Cpd.	Structure	Chemical Name
CP-316,311		3,6-dimethyl-4-(pentan-3-yloxy)-2-(2,4,6-trimethylphenoxy)pyridine
Deuterated CP-316,311	<p data-bbox="565 1350 786 1371">R₁-R₂₉ independently H or D</p>	
GSK876008		

-continued

Cpd.	Structure	Chemical Name
------	-----------	---------------

Deuterated
GSK876008R₁-R₂₂ independently H or D

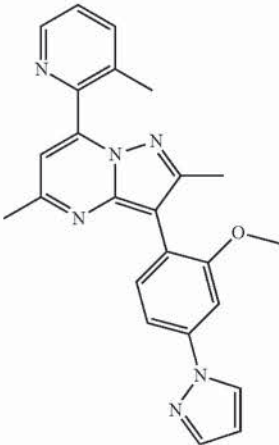
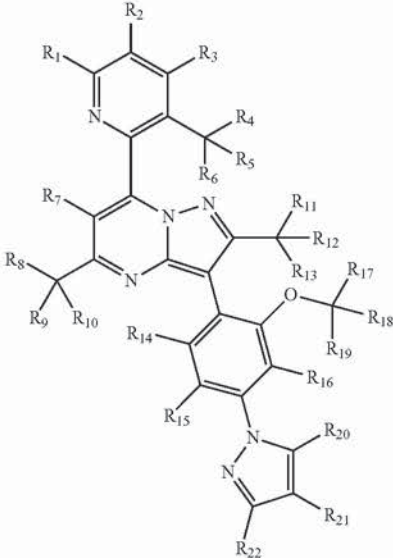
CRA5626/R317573



-continued

Cpd.	Structure	Chemical Name
Deuterated CRA5626/R317573		
	R ₁ -R ₂₄ independently H or D	
ONO2333Ms		10-(2-chloro-4-methoxyphenyl)-11-methyl-N-(pentan-3-yl)-1,8,12-triazatricyclo[7.3.0.0 ^{3,7}]dodeca-2,7,9,11-tetraen-2-amine
Deuterated ONO2333		
	R ₁ -R ₂₇ independently H or D	

-continued

Cpd.	Structure	Chemical Name
NBI76169		
Deuterated NBI76169		
	R ₁ -R ₂₂ independently H or D	

[0057] In another embodiment, any of the aforementioned compounds may incorporate stable or radioactive isotopes. Accordingly, also contemplated is use of isotopically-labeled compounds identical to those described herein, wherein one or more atoms are replaced by an atom having an atomic mass or mass number different from the atomic mass or mass number usually found in nature. Examples of isotopes that can be incorporated into these compounds include isotopes of hydrogen, carbon, nitrogen, oxygen, phosphorous, fluorine and chlorine, such as, but not limited to deuterium as discussed above (2H), as well as 3H, 13C, 14C, 15N, 18O, 17O, 31P, 32P, 35S, 18F, and 36Cl, respectively. Certain isotopically-labeled compounds, for example those into which radioactive isotopes such as 3H and 14C are incorporated, are also useful in drug or substrate tissue distribution assays. Tritiated hydrogen (3H) and carbon-14 (14C) isotopes are particularly preferred for their ease of preparation and detectability. Substitution with heavier iso-

topes such as deuterium (2H) can provide certain therapeutic advantages resulting from greater metabolic stability, for example increased in vivo half-life or reduced dose requirements and, therefore, may be preferred in some circumstances. Isotopically-labeled compounds can generally be prepared by performing procedures routinely practiced in the art.

Effect on Plasma ACTH in Adrenalectomized Rats

[0058] Adrenalectomy eliminates circulating corticosterone (the primary glucocorticoid) in rats and removes the negative feedback control of the HPA axis at both the hypothalamic and pituitary (corticotroph cells) levels and thus chronically elevates plasma ACTH (see, e.g., Mims et al., *J. Natl. Med. Assoc.* 69:145-47 (1977)). Intravenous injection of peptide CRF₁ receptor antagonists have been demonstrated to reduce the high plasma ACTH levels in

adrenalectomized (ADX) rats (see, e.g., Rivier et al., *J. Med. Chem.* 12:42:3175-82 (1999)). These findings were recapitulated with the small molecule NBI-77860 (Compound I). In adrenalectomized rats, Compound I has potent capability for lowering ACTH. The maximum reduction in ACTH correlated with peak plasma concentrations of NBI-77860; however, the duration of the ACTH-lowering effect exceeded drug plasma exposure. In adrenalectomized rats, a predictable relationship therefore exists between integrated plasma exposure of NBI-77860 and in vivo efficacy following oral administration.

[0059] The effectiveness of a compound as a CRF receptor antagonist may be determined by various assay methods. CRF antagonists described herein may be capable of inhibiting the specific binding of CRF to its receptor and consequently antagonizing activities associated with CRF. A compound may be assessed for activity as a CRF antagonist by one or more generally accepted assays including the assay described in the Examples. CRF antagonists useful for the methods described herein include compounds that demonstrate affinity for CRF receptor.

[0060] Without wishing to be bound by theory, in the treatment of CAH, CRF receptor antagonists would potentially block the release of ACTH from pituitary corticotrophs, thereby decreasing the production of androgens, and allow a more refined treatment paradigm for replacement of cortisol. Animal and human studies have shown the pharmacologic effect of Compound I (NBI-77860) on ACTH release. Standard biomarker assessments used by endocrinologists when monitoring treatment efficacy may be used for monitoring the effects of this CRF₁ receptor antagonist. Plasma levels of 17-OHP, androstenedione, testosterone, cortisol and ACTH, as well as urinary metabolites of these steroids, are easily measured in both children and adults giving rapid and meaningful data regarding treatment impact.

Pharmaceutical Compositions and Methods of Treatment

[0061] The present disclosure further provides for pharmaceutical compositions comprising any one of the CRF antagonist compounds described herein and a pharmaceutically acceptable excipient for use in the methods for treating CAH. A pharmaceutically acceptable excipient is a physiologically and pharmaceutically suitable non-toxic and inactive material or ingredient that does not interfere with the activity of the active ingredient; an excipient also may be called a carrier. The CRF antagonist compounds may be formulated in a pharmaceutical composition for use in treatment or preventive (or prophylactic) treatment (e.g., reducing exacerbation of CAH disease, or occurrence or recurrence of one or more symptoms of the disease). The methods and excipients described herein are exemplary and are in no way limiting. Pharmaceutically acceptable excipients are well known in the pharmaceutical art and described, for example, in Rowe et al., *Handbook of Pharmaceutical Excipients: A Comprehensive Guide to Uses, Properties, and Safety*, 5th Ed., 2006, and in *Remington: The Science and Practice of Pharmacy* (Gennaro, 21st Ed. Mack Pub. Co., Easton, Pa. (2005)). Examples of pharmaceutically acceptable excipients include sterile saline and phosphate buffered saline at physiological pH. Preservatives, stabilizers, dyes, buffers, and the like may be provided in the pharmaceutical composition. In addition, antioxidants and suspending agents may also be used.

[0062] Therapeutic and/or prophylactic benefit includes, for example, an improved clinical outcome, both therapeutic treatment and prophylactic or preventative measures, wherein the object is to prevent or slow or retard (lessen) an undesired physiological change or disorder, or to prevent or slow or retard (lessen) the expansion or severity of such disorder. As discussed herein, beneficial or desired clinical results from treating a subject include, but are not limited to, abatement, lessening, or alleviation of symptoms that result from or are associated the disease, condition, or disorder to be treated; decreased occurrence of symptoms; improved quality of life; longer disease-free status (i.e., decreasing the likelihood or the propensity that a subject will present symptoms on the basis of which a diagnosis of a disease is made); diminishment of extent of disease; stabilized (i.e., not worsening) state of disease; delay or slowing of disease progression; amelioration or palliation of the disease state; and remission (whether partial or total), whether detectable or undetectable; and/or overall survival. "Treatment" can also mean prolonging survival when compared to expected survival if a subject were not receiving treatment. Subjects in need of treatment include those who already have the condition or disorder as well as subjects prone to have or at risk of developing the disease, condition, or disorder, and those in which the disease, condition, or disorder is to be prevented (i.e., decreasing the likelihood of occurrence of the disease, disorder, or condition). A subject may be a human or non-human mammal (e.g., rat, mouse, dog, cat, livestock, zoo animal).

[0063] Optimal doses may generally be determined using experimental models and/or clinical trials. The optimal dose may depend upon the body mass, weight, or blood volume of the subject. In general, the amount of a compound described herein, that is present in a dose ranges from about 0.1 mg to about 30 mg per kg weight of the subject. In certain embodiments, a single dose is about 50-1000 mg. The use of the minimum dose that is sufficient to provide effective therapy is usually preferred. Subjects may generally be monitored for therapeutic effectiveness by clinical evaluation and using assays suitable for the condition being treated or prevented, which assays will be familiar to those having ordinary skill in the art and are described herein. The level of a compound that is administered to a subject may be monitored by determining the level of the compound in a biological fluid, for example, in the blood, blood fraction (e.g., serum), and/or in the urine, and/or other biological sample from the subject. Any method practiced in the art to detect the compound may be used to measure the level of compound during the course of a therapeutic regimen.

[0064] The dose of a composition comprising at least one of the compounds described herein for treating CAH or a related disease or disorder may depend upon the subject's condition, that is, stage of the disease, severity of symptoms caused by the disease, general health status, as well as age, gender, and weight, and other factors apparent to a person skilled in the medical art. Similarly, the dose of the compound may be determined according to parameters understood by a person skilled in the medical art.

[0065] The pharmaceutical compositions described herein that comprise at least one of the CRF₁ antagonist compounds described herein may be administered to a subject in need by any one of several routes that effectively deliver an effective amount of the compound. Such administrative routes include, for example, oral, parenteral, enteral, rectal, intra-

nasal, buccal, sublingual, intramuscular, and transdermal. Compositions administered by these routes of administration and others are described in greater detail herein.

[0066] Administration of the compounds or compositions disclosed includes nighttime administration or administration prior to sleep (i.e., bedtime administration). As used herein, bedtime administration refers to dosing intended to deliver clinically relevant concentrations of the CRF₁ antagonist at or before (such as 2-5 hours before) the expected circadian release of ACTH. Since this ACTH release is typically at 1-2 A.M., and since most orally administered drugs have a T_{max} of several hours, dosing at 10 P.M., for example, which is 3-4 hours in advance of the expected circadian release of ACTH is desirable. This same pre-pulse bedtime dosing may be adapted for shift workers (e.g., those who work at night and sleep during the day), in which case administration will not necessarily occur at nighttime. Administration is therefore dependent upon the expected circadian release of ACTH, and can vary depending upon the individual's (i.e., subject, patient) particular work and sleep patterns. In certain embodiments, a CRF₁ receptor antagonist described herein (for example, NBI-77860 or any one of NBI-30775, NBI-34041, SSR-126374, SSR-125543, antalarmin (N-butyl-N-ethyl-2,5,6-trimethyl-7-(2,4,6-trimethylphenyl)pyrrolo[3,2-e]pyrimidin-4-amine), or DMP904) is administered between about 2-5 hours prior to (i.e., before, in advance of) the expected circadian release of ACTH. In other embodiments, the CRF₁ receptor antagonist is administered to the subject between about 2-4 hours or 3-5 hours prior to the expected circadian release of ACTH. In a more specific embodiment, CRF₁ receptor antagonist is administered to the subject between about 3-4 hours prior to the expected circadian release of ACTH.

[0067] Also provided herein is a method for reducing 17-OHP and/or ACTH levels in a subject (i.e., patient, individual) who has CAH by administering a CRF₁ receptor antagonist. In certain embodiments, the antagonist is administered at or before the expected circadian release of ACTH. In other certain embodiments, the CRF₁ receptor antagonist as administered between about 2-4 hours or between about 3-5 hours prior to the expected circadian release of ACTH. In a more specific embodiment, CRF₁ receptor antagonist is administered to the subject between about 3-4 hours prior to the expected circadian release of ACTH.

[0068] The methods described herein that comprise administering a CRF₁ receptor antagonist to a female subject in need thereof in the manner described herein that causes a decrease in level of ACTH and 17-OHP in the subject may result in decreased release of androgens such as testosterone and androstenedione. The dose of glucocorticoids may concomitantly be decreased by a clinically significant amount, which in turn results in decreased side effects.

[0069] The amount of glucocorticoids (GC) and mineralocorticoids (MC) for maintenance therapy in patients who have CAH and who are young and growing and for maintenance therapy in patients who are full grown patients is known to a person skilled in the art. For example, guidelines are described in Speiser et al. (*J. Clin. Endocrinol. Metab.* 95:4133-60 (2010), incorporated by reference in its entirety) and shown in the Tables 1 and 2 therein. Particularly, for young, growing patients who have CAH, persons skilled in the art appreciate that too high dosing with GCs can impede statural growth in the patient. Accordingly, the methods

described herein for treating a patient with a CRF₁ receptor antagonist may comprise reducing the dose of a GC in a clinically significant manner.

[0070] In certain embodiments, methods for treating CAH by administering a CRF₁ receptor antagonist may further comprise administering a GC at a dose lower than the currently recommended dose of a GC for treating a subject who has CAH. When the subject is a fully grown patient, the dose of a GC, such as the dose of hydrocortisone (HC), prednisone, prednisolone, dexamethasone, or fludrocortisone recommended for maintenance therapy in a fully grown subject may be decreased by about 10%, 15%, 20%, 30%, 40%, 50%, 60% or more from the recommended doses of 15-25 mg/day HC; 5-7.5 mg/day prednisone, 4-6 mg/day prednisolone; 0.25-0.5 mg/day dexamethasone, or 0.05-0.2 mg/day of fludrocortisone. In a subject who is a growing patient with CAH, the recommended dose of GCs, such as HC may be decreased from the total recommended dose of 10-15 mg/m² per day and/or the total dose of fludrocortisone of 0.05-0.2 mg/day may each be decreased by about 10%, 15%, 20%, 30%, 40%, 50%, 60% or more in a subject who receives a CRF₁ receptor antagonist as described herein. In an embodiment, the methods described herein comprising administering to a subject in need thereof an effective amount of a CRF₁ antagonist results in a clinically significant reduction of ACTH levels relative to placebo. In a specific embodiment, administering to a subject in need thereof an effective amount of a CRF₁ antagonist results in a clinically significant reduction of ACTH levels relative to placebo, wherein that reduction is at least 25%. In another embodiment, administering to a subject in need thereof an effective amount of a CRF₁ antagonist results in a clinically significant reduction of ACTH levels relative to placebo, wherein that reduction is at least 50%. See Speiser et al., supra, for guidelines regarding administering glucocorticoids and mineralocorticoids.

[0071] In another embodiment, the methods described herein comprising administering to a subject in need thereof an effective amount of a CRF₁ antagonist results in a clinically significant reduction of 17-OHP levels relative to placebo. In another specific embodiment, administering to a subject in need thereof an effective amount of a CRF₁ antagonist results in a clinically significant reduction of 17-OHP levels relative to placebo wherein that reduction is at least 25%. In still another embodiment, administering to a subject in need thereof an effective amount of a CRF₁ antagonist results in a clinically significant reduction of 17-OHP levels relative to placebo wherein that reduction is at least 50%.

[0072] In an embodiment, the methods described herein comprising administering to a subject in need thereof an effective amount of a CRF₁ antagonist results in a clinically significant reduction of both ACTH and 17-OHP levels relative to placebo. In a certain embodiment, administering to a subject in need thereof an effective amount of a CRF₁ antagonist results in a clinically significant reduction of both ACTH and 17-OHP levels relative to placebo wherein the reduction is at least 25%. In another specific embodiment, administering to a subject in need thereof an effective amount of a CRF₁ antagonist results in a clinically significant reduction of both ACTH and 17-OHP levels relative to placebo wherein the reduction is at least 50%.

[0073] The pharmaceutical compositions may be in the form of a solution. Alternatively, they may be in the form of

a solid, such as powder, tablets, or the like. A composition comprising any one of the compounds described herein may be formulated for sustained or slow release. Such compositions may generally be prepared using well known technology and administered by, for example, oral, rectal or subcutaneous implantation, or by implantation at the desired target site. Sustained-release formulations may contain the compound dispersed in a carrier matrix and/or contained within a reservoir surrounded by a rate controlling membrane. Excipients for use within such formulations are biocompatible, and may also be biodegradable; preferably the formulation provides a relatively constant level of active component release. The amount of active compound contained within a sustained release formulation depends upon the site of implantation, the rate and expected duration of release, and the nature of the condition to be treated or prevented.

[0074] For oral formulations, at least one of the compounds described herein can be used alone or in combination with appropriate additives to make tablets, powders, granules or capsules, for example, with conventional additives, such as lactose, mannitol, corn starch or potato starch; with binders; with disintegrators; with lubricants; and if desired, with diluents, buffering agents, moistening agents, preservatives, coloring agents, and flavoring agents. The compounds may be formulated with a buffering agent to provide for protection of the compound from low pH of the gastric environment and/or an enteric coating. A compound included in the compositions may be formulated for oral delivery with a flavoring agent, e.g., in a liquid, solid or semi-solid formulation and/or with an enteric coating. Oral formulations may be provided as gelatin capsules, which may contain the active compound along with powdered carriers, such as lactose, starch, cellulose derivatives, magnesium stearate, stearic acid, and the like. Similar carriers and diluents may be used to make compressed tablets.

EXAMPLES

Example 1

CRF Receptor Binding Activity

[0075] CRF antagonists as used in the methods described herein may be evaluated for binding activity to the CRF receptor by a standard radioligand binding assay as generally described by Grigoriadis et al. (see, e.g., *Mol. Pharmacol* vol 50, pp 679-686, 1996) and Hoare et al. (see, e.g., *Mol. Pharmacol* 63: 751-765, 2003.) By utilizing radiolabeled CRF ligands, the assay may be used to evaluate the binding activity of the compounds described herein with any CRF receptor subtype.

[0076] Briefly, the binding assay involves the displacement of a radiolabeled CRF ligand from the CRF receptor. More specifically, the binding assay is performed in 96-well assay plates using 1-10 μg cell membranes from cells stably transfected with human CRF receptors. Each well receives about 0.05 mL assay buffer (e.g., Dulbecco's phosphate buffered saline, 10 mM magnesium chloride, 2 mM EGTA) containing compound of interest or a reference ligand (for example, sauvagine, urocortin I, or CRF), 0.05 mL of [^{125}I] tyrosine—sauvagine (final concentration ~150 pM or approximately the K_D , as determined by Scatchard analysis) and 0.1 mL of a cell membrane suspension containing the CRF receptor. The mixture is incubated for 2 hours at 22°C.

followed by separation of the bound and free radioligand by rapid filtration over glass fiber filters. Following three washes, the filters are dried and radioactivity (Auger electrons from ^{125}I) is counted using a scintillation counter. All radioligand binding data may be analyzed using the non-linear least-squares curve-fitting programs Prism (GraphPad Software Inc) or XLfit (ID Business Solutions Ltd).

Example 2

CRF₁ Receptor Agonist Activity

[0077] As reported in Fleck et al. (*J. Pharmacology and Experimental Therapeutics*, 341(2):518-531, 2012) (hereinafter "Fleck et al." and incorporated by reference in its entirety) the activity of previously identified CRF₁ receptor antagonists are presented. Such activity is reported as the kinetically derived affinity (K_i) calculated from the association (k_1) and dissociation (k_{-1}) rate constants by the following equation:

$$K_i = k_{-1}/k_1$$

[0078] Also as reported in Fleck et al., the kinetic K_i of the CRF₁ receptor antagonists listed in Table 1 below have been reported:

TABLE 1

Representative CRF ₁ Receptor Antagonists		
Ligand	k_1 ($10^6 \text{ M}^{-1} \text{ min}^{-1}$)	Kinetic K_i (nM)
NBI-27914	9.4 ± 3	25
CP-316,311	13 ± 2	12
NBI-46200	6.2 ± 2	22
DMP696	7.7 ± 2	9.5
pexacerfont	2.6 ± 0.1	19
NBI-35965	20 ± 2	2.3
ONO-2333Ms	4.4 ± 2.2	15
antalanin	3.4 ± 0.6	3.9
NBI-34041	8.3 ± 2.0	1.7
DMP904	18 ± 1	0.38
NBI-30775	14 ± 2.0	0.36
SSR125543A	33 ± 5	0.049
NBI-77860	0.24 ± 0.05	48 ± 9

[0079] By this same technique, the kinetic K_i of Compound I (NBI-77860) was found to be as follows:

Example 3

Dissociation Half-Life ($T_{1/2}$) of CRF₁ Receptor Antagonists

[0080] The dissociation half-life ($t_{1/2}$) of a CRF₁ receptor antagonist as used in the methods described herein is evaluated by the technique described in Fleck et al. As described therein, the dissociation rate constant for labeled and unlabeled ligands is denoted as k_{-1} , while the half-life of drug dissociation from the receptor ($t_{1/2}$), which is equal to the median residence time, is calculated from the dissociation rate constant (k_{-1}) by the following equation:

$$t_{1/2} = 0.693/k_{-1}$$

[0081] As reported in Fleck et al., the dissociation half-life ($t_{1/2}$) of the CRF₁ receptor antagonists listed in Table 2 below have been reported.

TABLE 2

Dissociation Half-Life of Representative Compounds		
Ligand	k_{-1} , (min^{-1})	Dissociation $t_{1/2}$, (min)
NBI 27914	0.27 ± 0.07	2.6
CP-316,311	0.17 ± 0.04	4.1
NBI-46200	0.13 ± 0.002	5.3
DMP696	0.095 ± 0.02	7.3
pexacerfont	0.049 ± 0.001	14
NBI-35965	0.048 ± 0.005	16
ONO-2333Ms	0.063 ± 0.029	17
antalarmin	0.013 ± 0.002	53
NBI-34041	0.013 ± 0.002	53
DMP904	0.0072 ± 0.002	96
NBI-30775	0.0054 ± 0.0006	130
SSR125543A	0.0016 ± 0.0003	430
NBI-77860	0.012 ± 0.0003	58

[0082] By this same technique, the dissociation half-life of Compound I (NBI-77860) was found to be as follows.

[0083] Accordingly, CRF₁ receptor antagonists that have a dissociation half-life ($t_{1/2}$) in excess of 30 minutes include (but are not limited to) antalarmin, NBI-34041, DMP904, NBI-30775, SSR125543A, and NBI-77860 (Compound I). These same compounds are also representative of CRF₁ receptor antagonists having a dissociation half-life ($t_{1/2}$) in excess of 40 minutes, and a dissociation half-life ($t_{1/2}$) in excess of 50 minutes.

Example 4

Lowering of ACTH in Adrenalectomized Rats

[0084] Compound I (NBI-77860) (see, e.g., Tellew et al., *Bioorg. Med. Chem. Lett.* 2010, 20:7259; WO2006044958) is a potent CRF₁ antagonist possessing a binding pKi of 8.2, a kinetic Ki of 49 nM (Table 1 above), and a Dissociation $t_{1/2}$ of 58 minutes (Table 2 above).

[0085] Intravenous injection of peptide CRF₁ receptor antagonists have been demonstrated to reduce the high plasma ACTH levels in adrenalectomized (ADX) rats (see, e.g., Rivier et al., *J. Med. Chem.* 12:42:3175-82 (1999)). These findings were recapitulated with the small molecule NBI-77860. When administered orally to ADX rats (n=6/group), 30 mg/kg single doses of NBI-77860 significantly lowered the plasma ACTH levels for up to 5 hours (see FIG. 2). The duration of efficacy correlated with peak plasma concentrations, with a time course exceeding drug plasma exposure. In adrenalectomized rats, a predictable relationship exists between integrated plasma exposure of NBI-77860 and in vivo efficacy following oral administration.

[0086] Fleck et al. also report the effects of CRF₁ receptor antagonists differentiated by their dissociation half-life on plasma ACTH levels in adrenalectomized rats; namely, NBI 30775, NBI 34041 and NBI 35965. At the highest dose (10 mg/kg), all three ligands reduced ACTH acutely (1 hr post-injection, FIG. 3A-C). After a longer duration, a clear difference emerged between NBI 35965 and the other two ligands. The ACTH level returned to the vehicle level by 2 hr for NBI 35965 (FIG. 3C), whereas the response was sustained for 4-6 hr for NBI 30775 and NBI 34041 (FIGS. 3A and 3B).

Example 5

Pharmacodynamic Effects of Compound I in Humans

[0087] In this study, pharmacodynamic effects of NBI-77860 (Compound I) on human subjects were evaluated by observing the effect of single oral doses on HPA axis response produced by metyrapone (0.04 g/kg) with respect to placebo and to a single dose of alprazolam (0.75 mg). Metyrapone blocks cortisol synthesis in the adrenal, thereby mimicking the cortisol deficiency of CAH, and is associated with an acute reflex rise ACTH levels.

[0088] The primary analysis was performed by determining the ACTH values between 30 min and 4 h post dose (AUC (30 min to 4 h)). In this analysis, when compared to placebo, the following observations were made. A significant reduction of ACTH AUC (30 min to 4 h) was observed with the alprazolam and the NBI-77860, 400 mg treatments. A non-significant reduction in ACTH AUC (30 min to 4 h) was seen with the NBI-77860, 50 mg treatment. An increase in AUC (30 min to 4 h) was seen with the NBI-77860, 10 mg treatment.

[0089] In the analysis performed on the ACTH values between 2 h to 4 h post-dose (AUC (2 h to 4 h)) (the period when exposure reached the C_{max} value), there was a significant reduction of ACTH levels in the NBI-77860, 400 mg and 50 mg treatment periods compared with the placebo treatment period; however, the reduction was not seen with the NBI-77860 at the 10 mg dose.

Example 6

Clinical Study

[0090] In this study, NBI-77860 (Compound I) was evaluated in the clinical study entitled "A Phase 1, Single-Blind, Placebo-Controlled, Fixed-Sequence, Single-Dose Study to Evaluate the Safety and Tolerability of NBI-77860 in Adult Females with Congenital Adrenal Hyperplasia" (IND 117, 388). The study was a single-blind, placebo-controlled, single center, fixed-sequence, single-dose clinical trial in adult female classical CAH patients. It was designed to assess the safety, tolerability, and plasma exposure of NBI-77860, as well as the effect of this compound on endogenous levels of HPA axis hormones.

[0091] A total of 8 female subjects, ages 19 to 58, with a medical diagnosis of classical 21-hydroxylase deficiency CAH were administered single bedtime doses (hs) of NBI-77860 300 mg, 600 mg, and placebo during three separate treatment periods (see study design schematic in FIG. 4). The subjects' usual morning dose of concurrent steroidal treatment was delayed until after the 16-hour postdose blood samples were collected (i.e., until approximately 1400 h).

[0092] The PD endpoints for this study included the HPA axis biomarkers of interest in this patient population; namely, 17-hydroxyprogesterone (17-OHP; as the primary PD endpoint), adrenocorticotropic hormone (ACTH), androstenedione, testosterone, and serum cortisol levels. The initial analysis of PD variables was an examination of the grouped subject data for each biomarker, expressed as a mean percent change from predose levels for the two active dosing conditions relative to the placebo condition. The data for mean 17-OHP and ACTH levels throughout the 24-hour postdose period are provided in FIG. 5.

[0093] Consistent and clinically meaningful reductions from predose levels of both 17-OHP and ACTH were observed throughout the postdose period following administration of NBI-77860 relative to placebo in these CAH patients. In addition to the group mean data, individual responses were evaluated and treatment “responders” were conservatively defined as those subjects with at least a 50% decrease in 17-OHP and ACTH under active NBI-77860 relative to placebo during the peak morning period. This responder analysis yielded a sizeable responder rate of 50% in the study (none of these subjects were responders during the initial placebo treatment period). Furthermore, the 300 mg dose yielded nearly identical effects on 17-OHP and ACTH as the 600 mg dose. An example of an individual subject response for these biomarkers is provided in FIG. 6.

[0094] The various embodiments described above can be combined to provide further embodiments. All U.S. patents, U.S. patent application publications, U.S. patent applications, foreign patents, foreign patent applications and non-patent publications referred to in this specification and/or listed in the Application Data Sheet, including U.S. Provisional Application Ser. Nos. 61,929,941, filed Jan. 21, 2014; 61,981,033, filed Apr. 17, 2014; and 62/069,155, filed Oct. 27, 2014, are incorporated herein by reference, in their entirety. Aspects of the embodiments can be modified, if necessary to employ concepts of the various patents, applications and publications to provide yet further embodiments.

[0095] These and other changes can be made to the embodiments in light of the above-detailed description. In general, in the following claims, the terms used should not be construed to limit the claims to the specific embodiments disclosed in the specification and the claims, but should be construed to include all possible embodiments along with the full scope of equivalents to which such claims are entitled. Accordingly, the claims are not limited by the disclosure.

I claim the following:

1. A method for treating Congenital Adrenal Hyperplasia (CAH) by administering to a subject in need thereof a CRF₁ receptor antagonist having a dissociation half-life in excess of 30 minutes.

2. The method of claim **1** wherein the CRF₁ receptor antagonist has a dissociation half-life in excess of 40 minutes.

3. The method of claim **1** wherein the CRF₁ receptor antagonist has a dissociation half-life in excess of 50 minutes.

4. The method of claim **1** wherein the CRF₁ receptor antagonist is Compound I (NBI-77860; 2,5-dimethyl-3-[2-methyl-4-(methoxy)phenyl]-N-[(1S)-1-(3-methyl-1,2,4-oxadiazol-5-yl)propyl]pyrazolo[1,5-a]pyrimidin-7-amine).

5. The method of claim **1** wherein the CRF₁ receptor antagonist is NBI-30775, NBI-34041, SSR-126374, SSR-125543, antalarmin (N-butyl-N-ethyl-2,5,6-trimethyl-7-(2,4,6-trimethylphenyl)pyrrolo[3,2-e]pyrimidin-4-amine), or DMP904.

6. The method of any one of claims **1-5** wherein the CRF₁ receptor antagonist is administered at bedtime.

7. The method of any one of claims **1-5** wherein the CRF₁ receptor antagonist is administered at or before the expected circadian release of ACTH.

8. The method of claim **7** wherein the CRF₁ receptor antagonist is administered 3-4 hours before the expected circadian release of ACTH.

9. A method for reducing 17-OHP and ACTH levels in a subject who has Congenital Adrenal Hyperplasia (CAH), said method comprising administering to the subject a CRF₁ receptor antagonist at bedtime.

10. The method of claim **9**, wherein the CRF₁ receptor antagonist is administered at or before the expected circadian release of ACTH.

11. The method of claim **9**, wherein the CRF₁ receptor antagonist is administered 3-4 hours before the expected circadian release of ACTH.

12. The method of any one of claims **9-11**, wherein the CRF₁ receptor antagonist is Compound I (NBI-77860; 2,5-dimethyl-3-[2-methyl-4-(methoxy)phenyl]-N-[(1S)-1-(3-methyl-1,2,4-oxadiazol-5-yl)propyl]pyrazolo[1,5-a]pyrimidin-7-amine).

13. The method of any one of claims **9-11**, wherein the CRF₁ receptor antagonist is NBI-30775, NBI-34041, SSR-126374, SSR-125543, antalarmin (N-butyl-N-ethyl-2,5,6-trimethyl-7-(2,4,6-trimethylphenyl)pyrrolo[3,2-e]pyrimidin-4-amine), or DMP904.

14. A CRF₁ receptor antagonist for use in treating Congenital Adrenal Hyperplasia (CAH), wherein the CRF₁ receptor antagonist has a dissociation half-life in excess of 30 minutes.

15. The CRF₁ receptor antagonist of claim **14**, wherein the CRF₁ receptor antagonist has a dissociation half-life in excess of 40 minutes.

16. The CRF₁ receptor antagonist of claim **14**, wherein the CRF₁ receptor antagonist has a dissociation half-life in excess of 50 minutes.

17. The CRF₁ receptor antagonist of claim **14**, wherein the CRF₁ receptor antagonist is Compound I (NBI-77860; 2,5-dimethyl-3-[2-methyl-4-(methoxy)phenyl]-N-[(1S)-1-(3-methyl-1,2,4-oxadiazol-5-yl)propyl]pyrazolo[1,5-a]pyrimidin-7-amine).

18. The CRF₁ receptor antagonist of claim **14**, wherein the CRF₁ receptor antagonist is NBI-30775, NBI-34041, SSR-126374, SSR-125543, antalarmin (N-butyl-N-ethyl-2,5,6-trimethyl-7-(2,4,6-trimethylphenyl)pyrrolo[3,2-e]pyrimidin-4-amine), or DMP904.

19. The CRF₁ receptor antagonist of any one of claims **14-18**, wherein the CRF₁ receptor antagonist is suitable for administration at bedtime.

20. The CRF₁ receptor antagonist of any one of claims **14-18**, wherein the CRF₁ receptor antagonist is suitable for administration at or before the expected circadian release of ACTH.

21. The CRF₁ receptor antagonist of any one of claims **14-18**, wherein the CRF₁ receptor antagonist is suitable for administration 3-4 hours before the expected circadian release of ACTH.

* * * * *