

UNITED STATES
PATENT AND TRADEMARK OFFICE





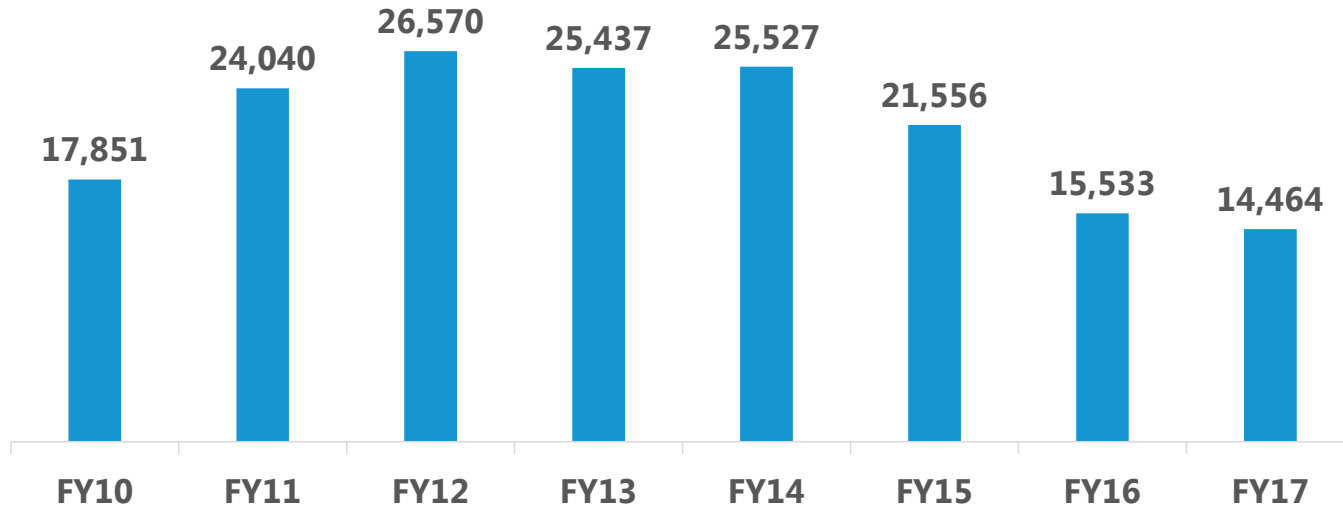
Appeal and Interference Statistics

Patent Trial and Appeal Board
May 2017



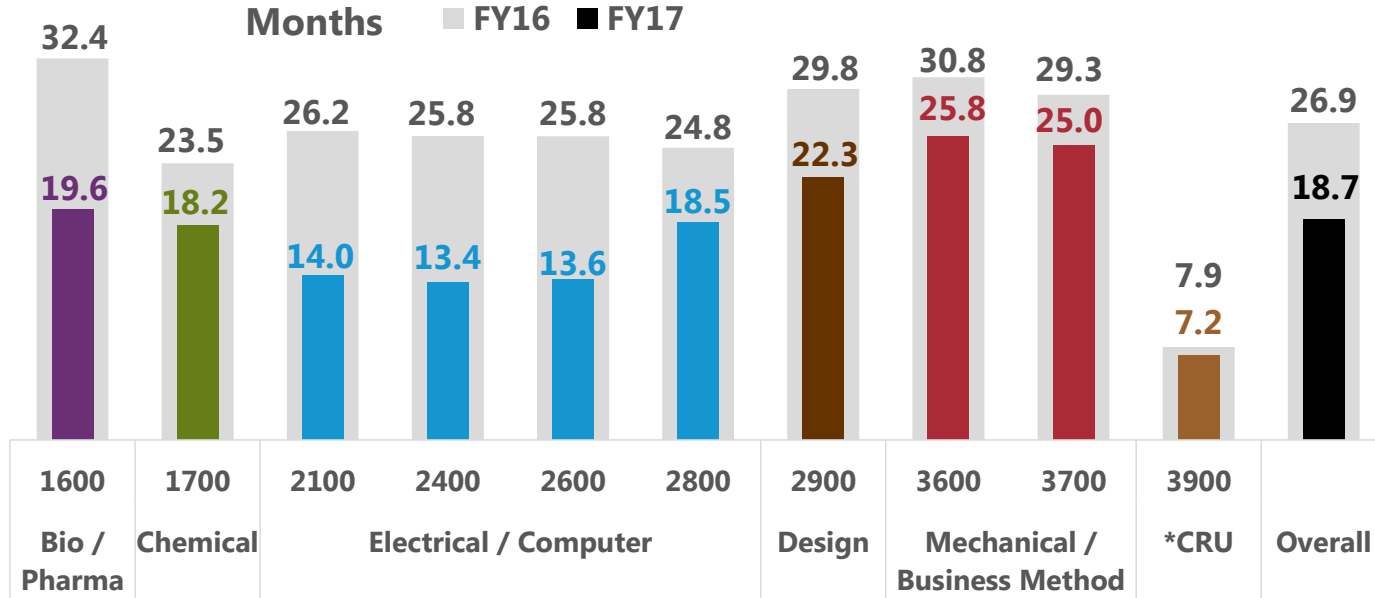
Pending Appeals

(FY10 to FY17: 10/1/09 to 5/31/17)



Pendency of Decided Appeals in FY16 and FY17

(5/31/16 compared to 5/31/17)

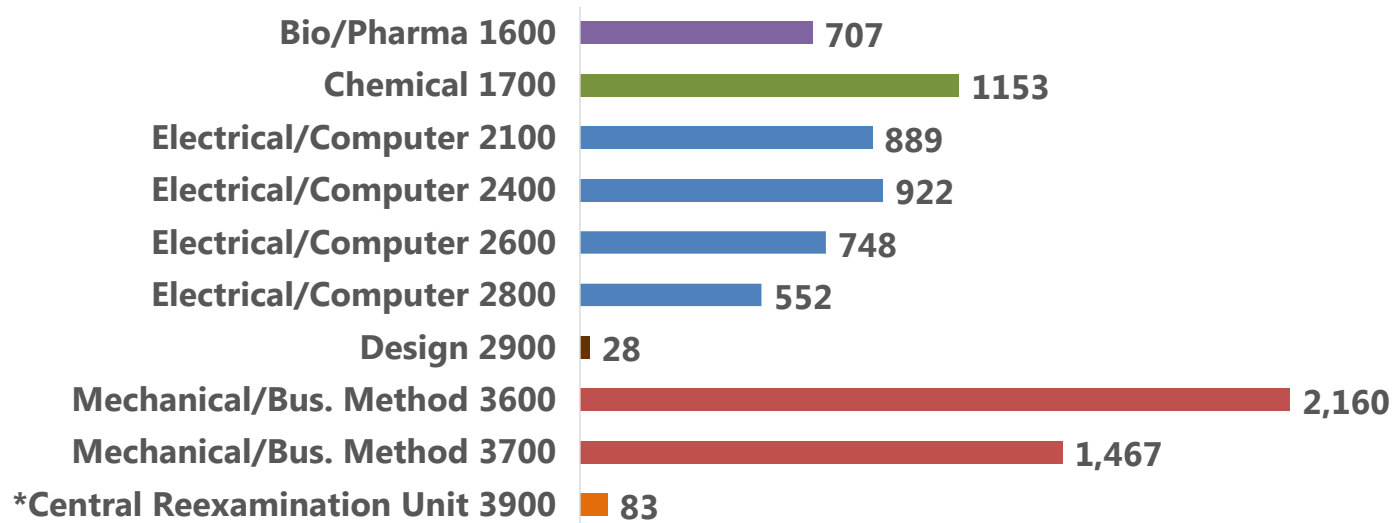


Pendency is calculated as average months from Board receipt date to final decision.
 *CRU (Central Reexamination Unit) includes ex parte reexams, inter partes reexams, supplemental examination reviews and reissues from all technologies.



Appeal Intake in FY17

(10/1/16 to 5/31/17)

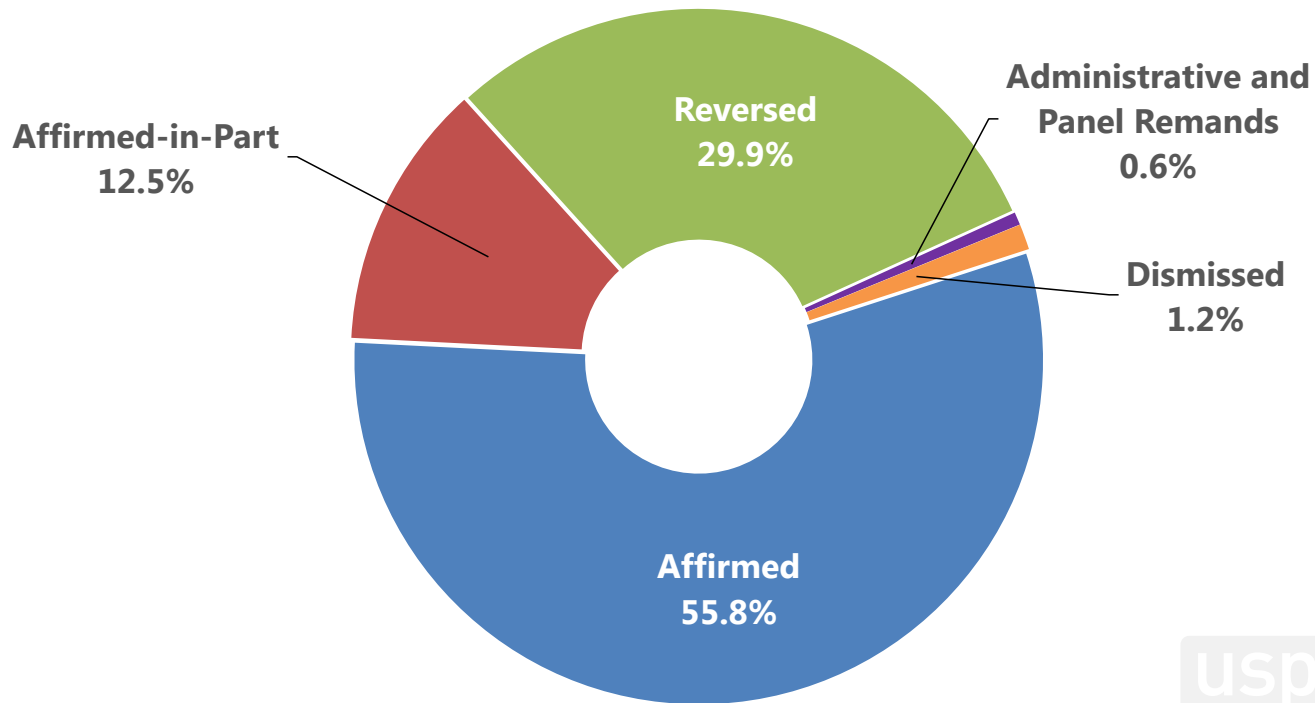


*The Central Reexamination Unit includes ex parte reexams, inter partes reexams, supplemental examination reviews and reissues from all technologies.



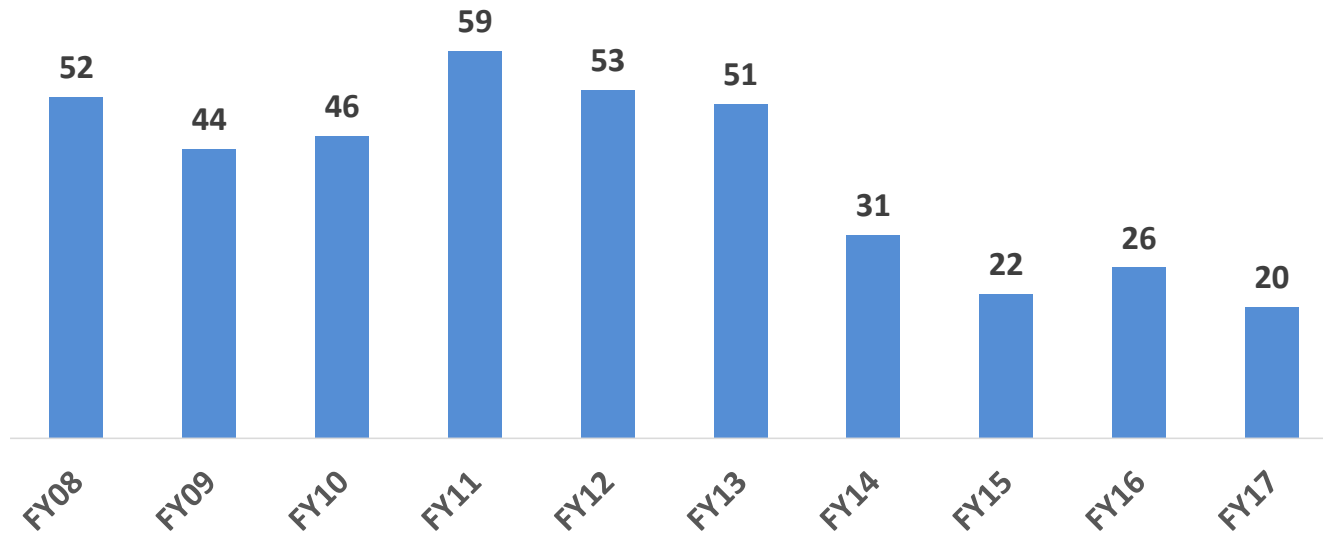
Appeal Outcomes in FY17

(FY17: 10/1/16 to 5/31/17)



Interference Inventory

(FY08 to FY17: 10/1/07 to 5/31/17)



uspto

7

