



US 20040153676A1

(19) **United States**

(12) **Patent Application Publication**
Krantz et al.

(10) **Pub. No.: US 2004/0153676 A1**

(43) **Pub. Date: Aug. 5, 2004**

(54) **METHOD AND APPARATUS FOR
MANAGING POWER IN NETWORK
INTERFACE MODULES**

(22) Filed: **Jan. 31, 2003**

Publication Classification

(75) Inventors: **Anton W. Krantz**, Kirkland, WA (US);
Abhishek Abhishek, Woodinville, WA
(US); **Arun Ayyagari**, Seattle, WA
(US); **Jiandong Ruan**, Bellevue, WA
(US); **Timothy M. Moore**, Bellevue,
WA (US); **Avi R. Geiger**, Seattle, WA
(US); **Warren V. Barkley**, Mill Creek,
WA (US)

(51) **Int. Cl.⁷ G06F 1/26**

(52) **U.S. Cl. 713/300**

(57) **ABSTRACT**

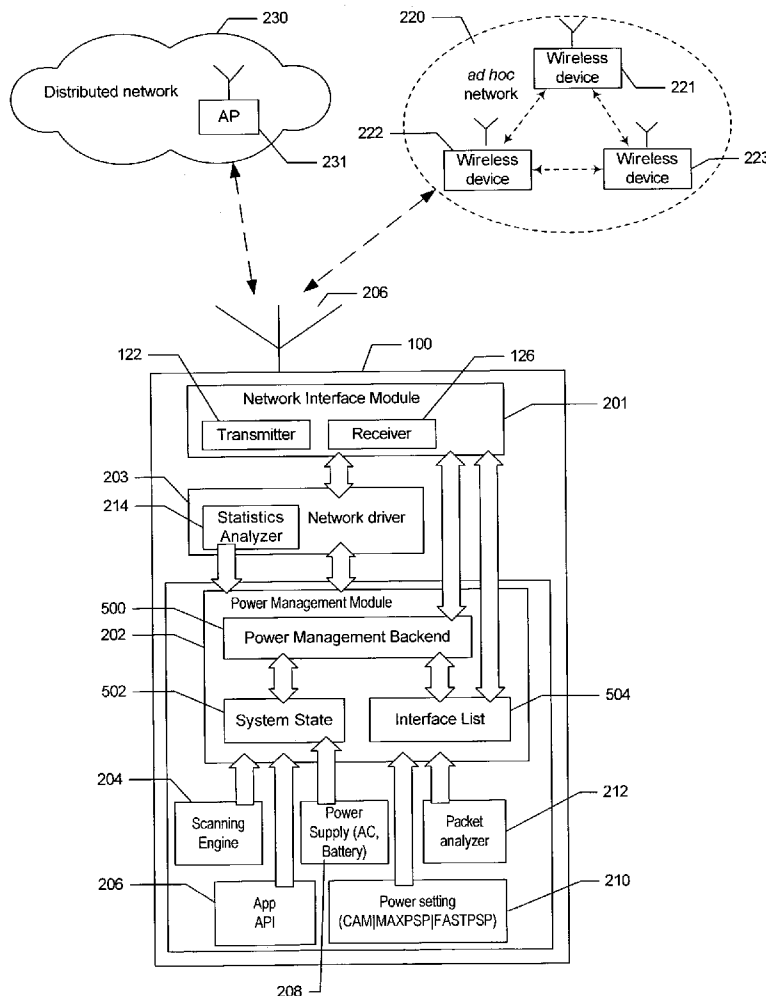
A method and system for managing power consumption in a portable computing device having a network interface module is presented. A power management module receives inputs from other modules and determines when the network interface module is to be put in a doze state for a predetermined number of beacon intervals to conserve power consumption in the network interface module. The network interface module in a device that is associated with a network is put in the doze state after an event has occurred including when a scan has been performed, after a delayed sleep timer has expired, and after a beacon transmission has been completed and no traffic is buffered for the device. The delayed sleep-time is set based on the estimated round trip time of a packet.

Correspondence Address:

LEYDIG VOIT & MAYER, LTD
TWO PRUDENTIAL PLAZA, SUITE 4900
180 NORTH STETSON AVENUE
CHICAGO, IL 60601-6780 (US)

(73) Assignee: **Microsoft Corporation**, Redmond, WA

(21) Appl. No.: **10/355,412**



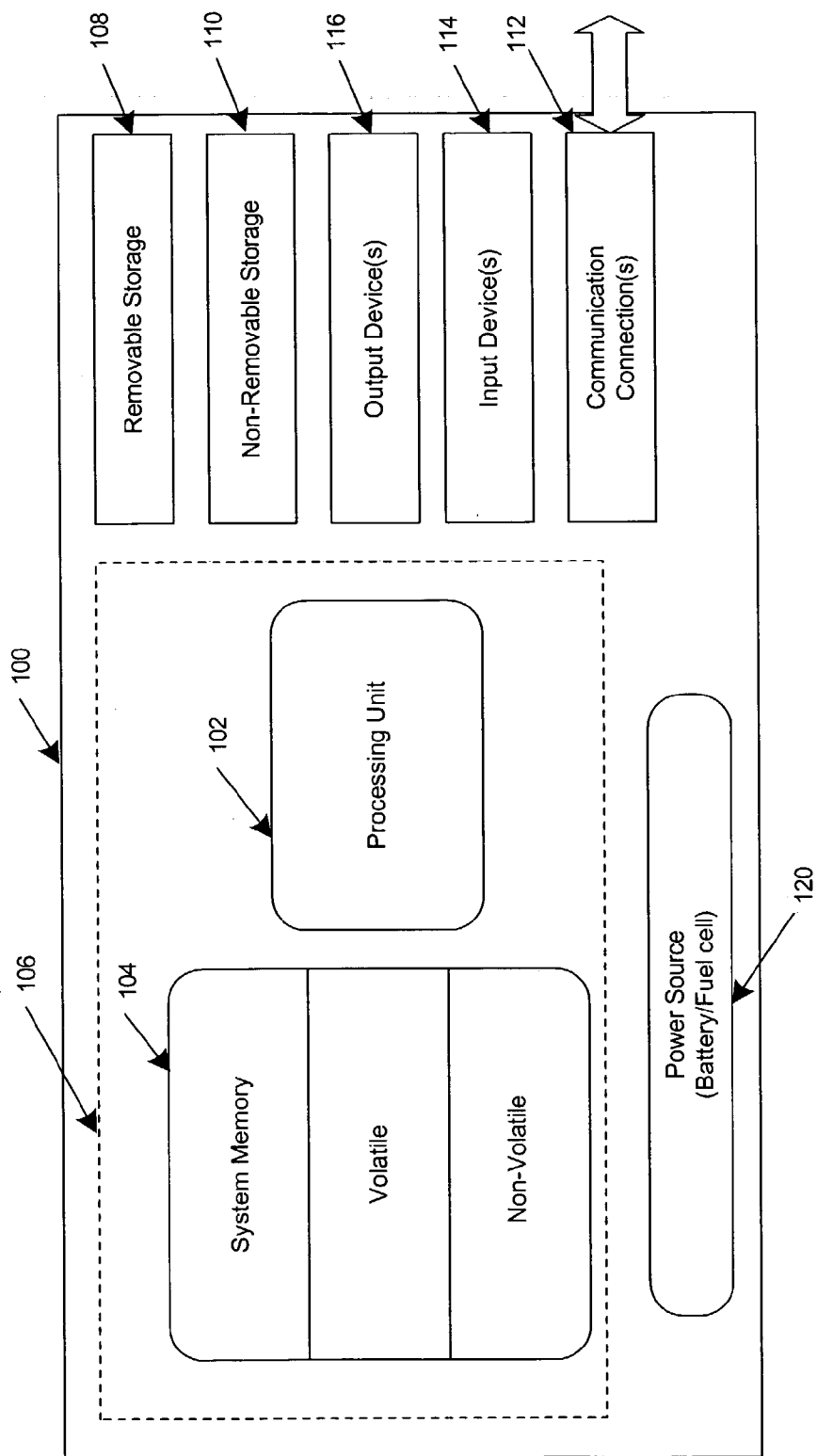


FIG. 1

FIG. 2

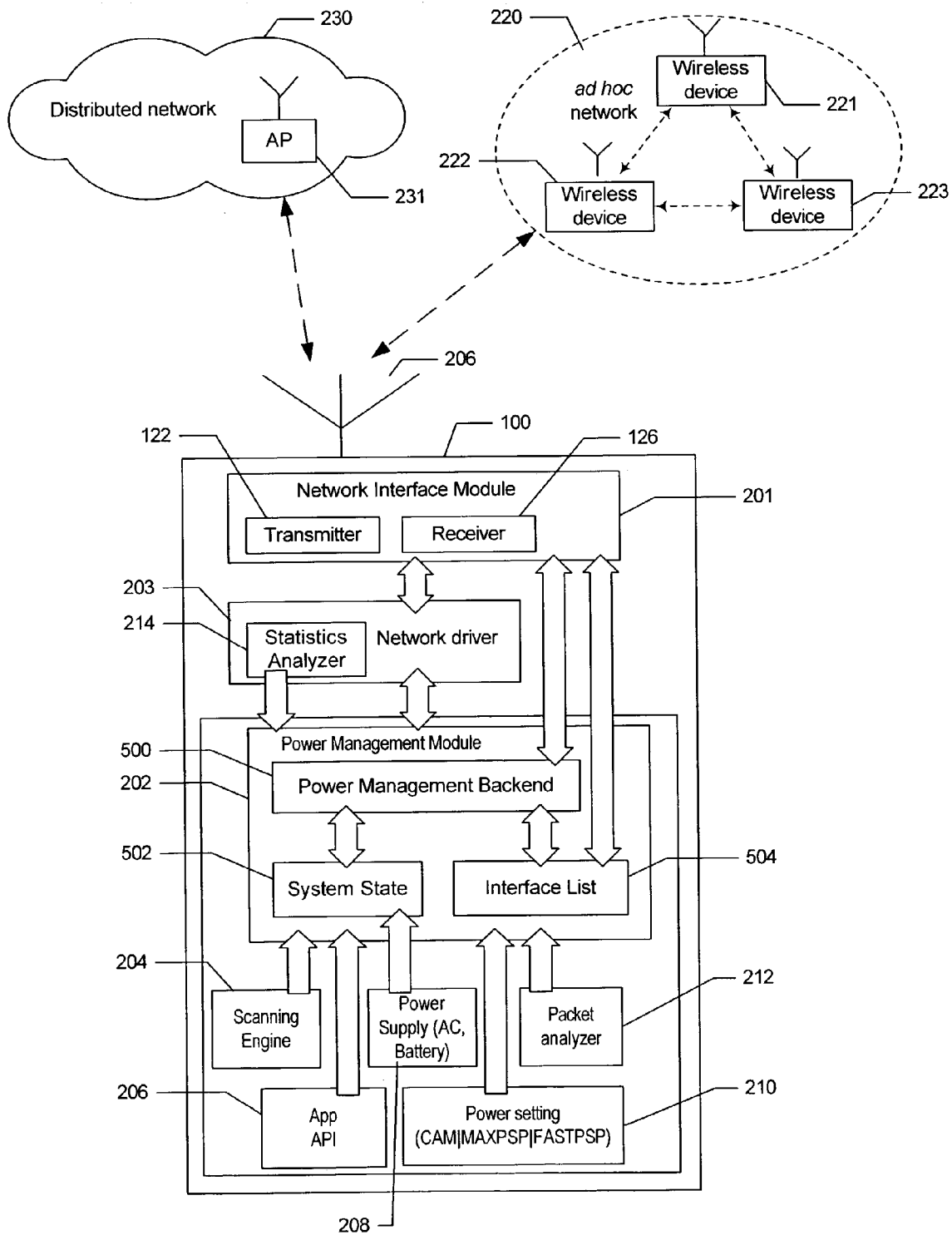


FIG. 3

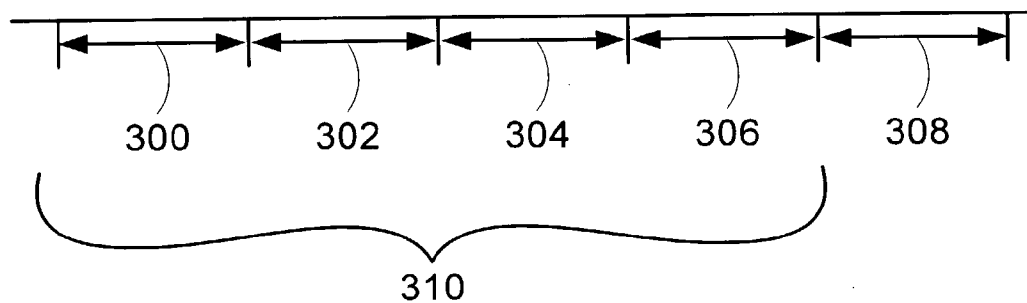


FIG. 7

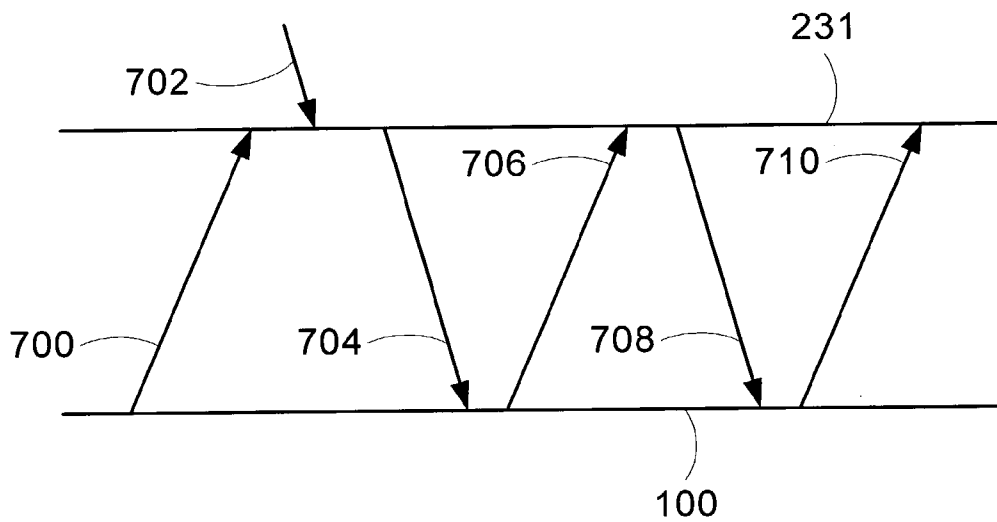
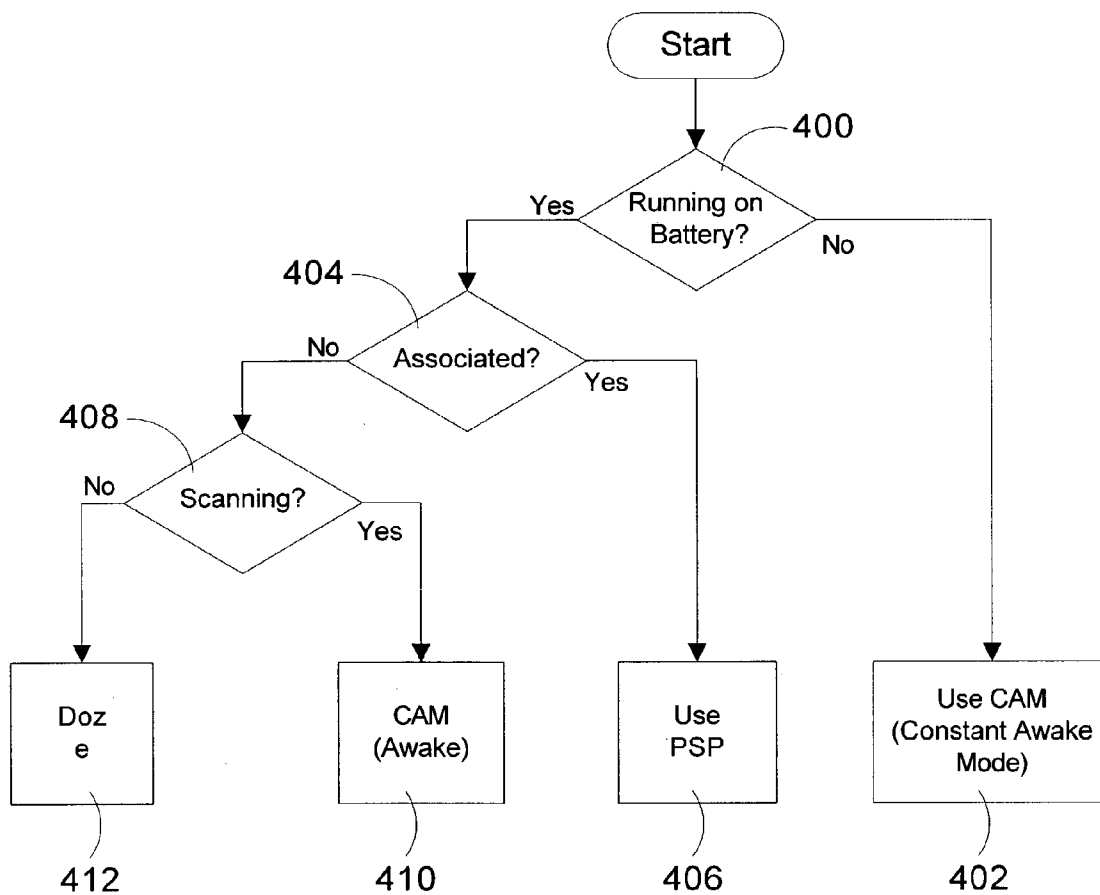


FIG. 4



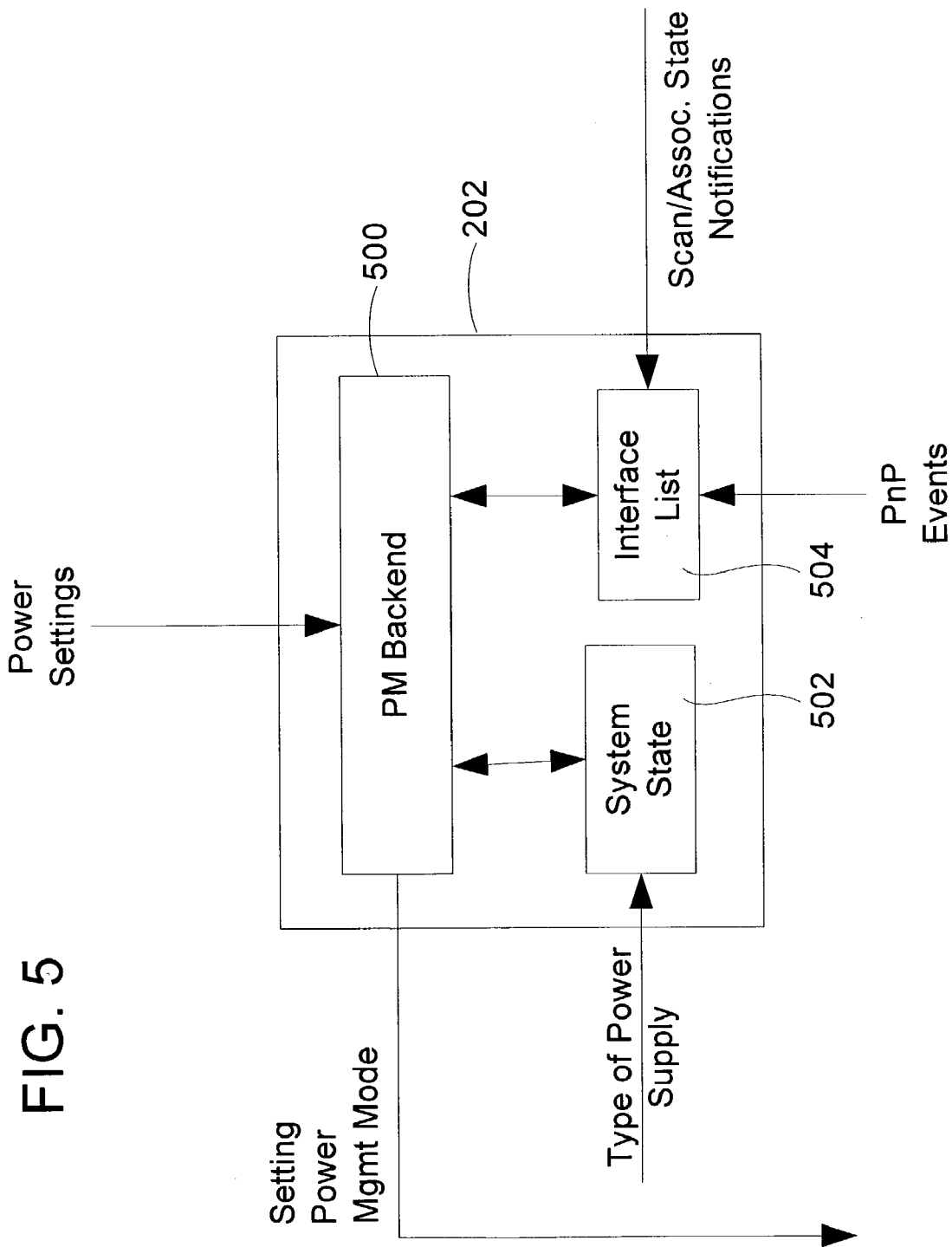
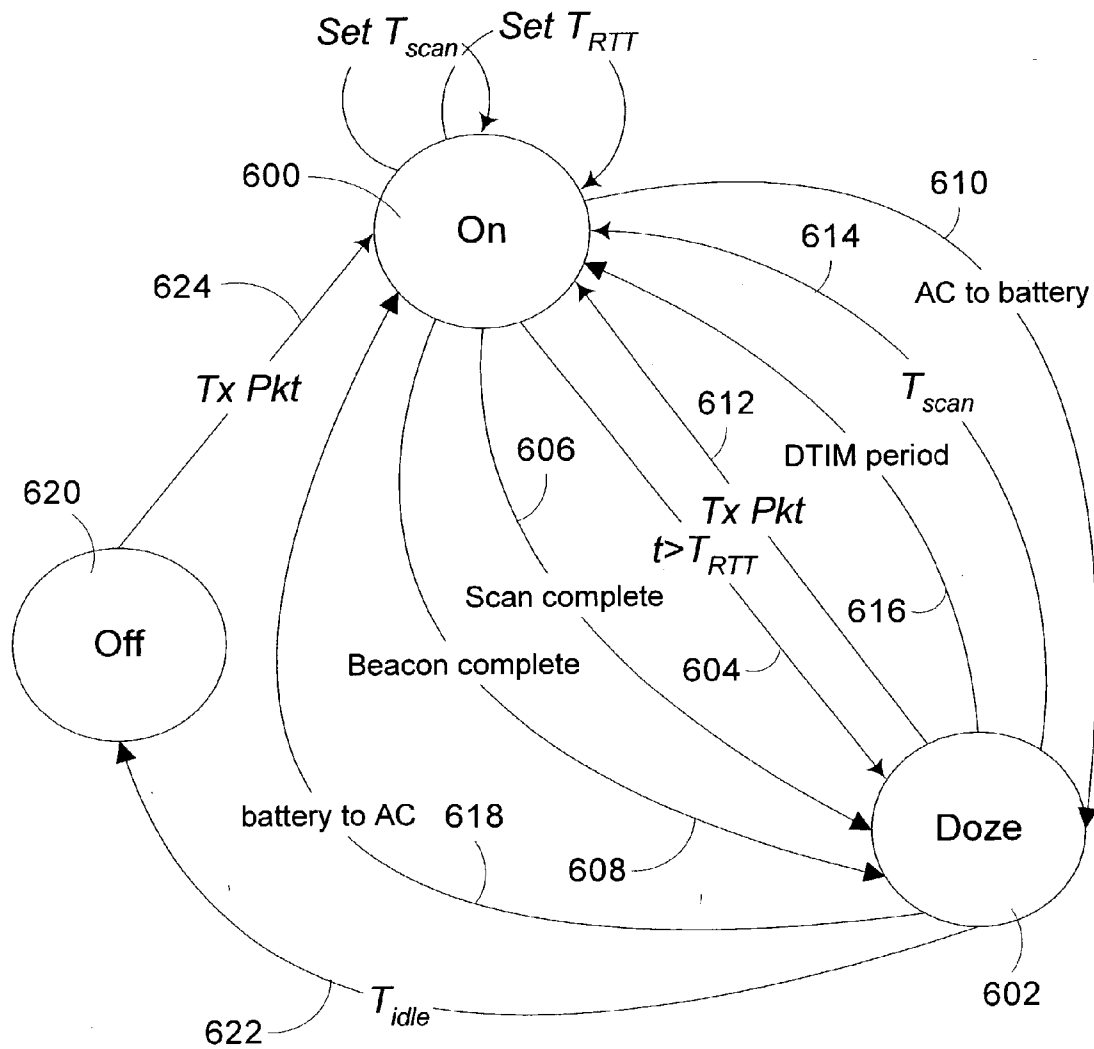
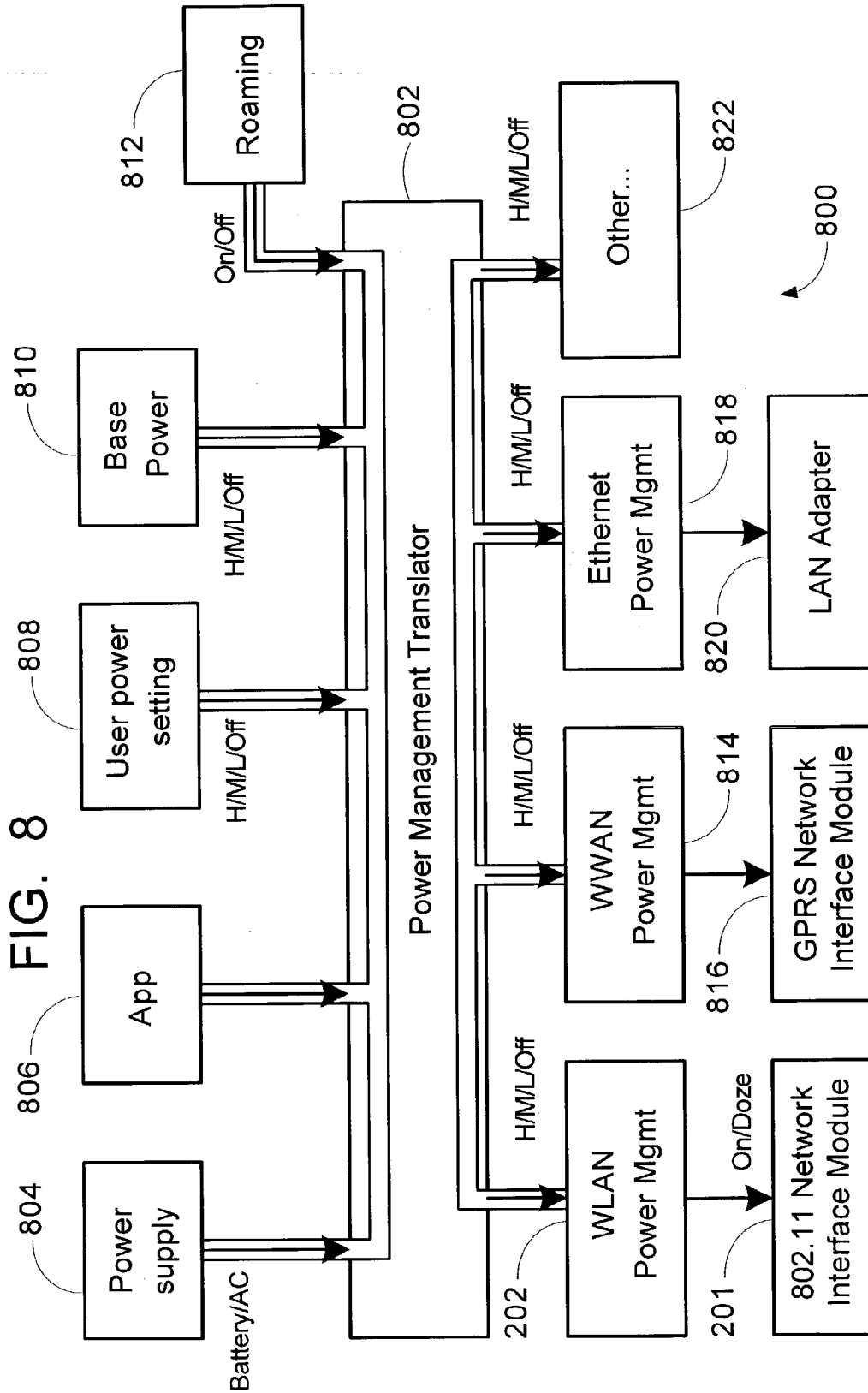


FIG. 6





METHOD AND APPARATUS FOR MANAGING POWER IN NETWORK INTERFACE MODULES

FIELD OF THE INVENTION

[0001] This invention relates generally to portable computing devices and, more particularly, relates to power management in portable computing devices.

BACKGROUND OF THE INVENTION

[0002] With the development and deployment of wireless networking devices such as laptop computers, personal digital assistant devices, etc. and infrastructures, consumers and businesses are increasingly being able to realize the benefits of true mobile computing, collaboration, and information exchange. No longer are business travelers required to carry an assortment of cables and search endlessly for an available data port simply to connect to a network to retrieve email messages, download files, or exchange information. No longer are companies and home consumers restrained in where they may access their networks by the location of the Ethernet jacks on the wall. Meeting participants and groups of friends may now form their own ad hoc networks without connecting cables between themselves or logging in to some preexisting network. They can log onto the network using a wireless protocol while running on battery power, thereby allowing even greater mobility

[0003] However, while the concept of mobile computing on wireless networks is well accepted, the implementation of this concept has taken on many forms. That is, there now exist several different wireless protocol standards that are competing in the marketplace. These standards include 802.11b (also known as Wi-Fi), 802.11a (also known as Wi-Fi5), 802.11g, HomeRF, Bluetooth, Wireless 1394, HyperLAN2, UWB, ZigBee, etc. Each of these different standards has particular advantages and was and is being developed with particular applications and users in mind. One thing in common with these standards is the use of a network interface module, commonly implemented as a network interface card (NIC).

[0004] As mobile workers demand greater mobility, both inside the organization and when traveling, the mobile workers are limited by the lifetime of the battery powering the wireless device. The battery life is a major restriction on mobility. The wireless NIC is the third highest consumer of battery power in a laptop. In small form factor devices, the wireless NIC consumes an even larger percentage of battery power than in a laptop. Most of that energy is used for wireless data transmissions to keep the wireless NIC powered on even when the NIC is not engaged in data transmissions. Since the amount of power a battery provides is limited, how to minimize power consumption to extend the operation time of the device powered by the battery is an important issue for these devices.

[0005] One method that has been taken to reduce power consumption of the functions the wireless NIC performs is adjusting the period between performing scanning to determine which devices are in the range of the wireless networking device. For example, U.S. application Ser. No. 10/323,043, filed Dec. 18, 2002 and assigned to the assignee of this application teaches setting the time between scans using an exponential function based on the scanning history and scan results of the latest scan. However, while increas-

ing the time between scans conserves power, more methods to conserve battery power are needed.

BRIEF SUMMARY OF THE INVENTION

[0006] The present invention provides a method and apparatus for managing power in a network interface module in a computing device. A power management module controls the power state of the network interface module based upon parameters received from other modules in the computing device. If the computing device is being powered from the limited energy power source such as a battery or fuel cell and the computing device is associated with an access point, the network interface module is operated in a power saving mode to conserve power draw from the limited energy power source. In one embodiment, the power saving mode is either a fast power save mode or a maximum power save mode. If the computing device is not associated with an access point and the network interface module is scanning or a scan has been requested, the network interface module is operated in a powered up state where the network interface module is fully powered. In one embodiment, when the network interface module is not associated with an access point and is not performing a scan or has completed a scan, the network interface module is put into a low power state (i.e., a doze state). If the computing device is not associated with an access point and the network interface module is scanning or a scan has been requested, the network interface module is set to a powered up state if the network interface module was in a doze state where the minimum amount of power for the network interface module to operate is used. If the computing device is being powered from a power line source (e.g., an ac power source, battery charger, etc.), the network interface module remains in a powered up state, where the network interface module is fully powered.

[0007] A user may set a preference via an interface to specify whether the user wants no power conservation (i.e., a constant awake mode), a mid range of power conservation (i.e., a fast power save mode), or a maximum mode of power conservation (i.e., a maximum power save mode). In addition to the user settable preference, an application can tag a packet to indicate a fast response is required and the power management module adjusts operation of the network interface module to operate in a constant awake mode or a fast power save mode.

[0008] In the fast power save mode, the power management module determines when the network interface module can enter a doze state and sends a notification to an access point that the network interface module is going to be set to the doze state. The power management module sets the network interface module to the doze state after the notification has been sent. Prior to a beacon interval ending, the network interface module is set to a powered up state (i.e., an on state) to receive a beacon for each beacon interval. If the beacon indicates that no packets are queued for the computing device at the access point or the peer computing device, the network interface module is put back into the doze state. If the beacon indicates that at least one packet is buffered for the computing device, the network interface module receives the packets that have been buffered and then is put in the doze state.

[0009] The step of determining when the network interface module can enter a doze state includes determining that

a delayed sleep timer has expired, determining if a scan has been completed, determining if a beacon indicates that no traffic is queued for the computing device, and determining if the power source switches from the limited energy power source to the power line source.

[0010] In a maximum power save mode, the power management module puts the network interface module into a doze state for multiple beacon intervals (i.e., a listening interval). The power management module determines when the network interface module can enter a doze state and sends a notification to an access point that the network interface module is going to be set to the doze state. The power management module sets the network interface module to the doze state after the notification has been sent. Prior to the listening interval ending, the network interface module is set to an on state to receive a beacon. If the beacon indicates that no packets are queued for the computing device, the network interface module is put back into the doze state for a listening interval. If the beacon indicates that at least one packet is buffered for the computing device, the network interface module receives the packets that have been buffered and then is put into the doze state for the remainder of the listening interval.

[0011] The power management module has a power management backend module to determine when the network interface module is to be set to one of an on state and a doze state, a system state module in communication with the power management backend module to provide system state information including whether the device is being powered from the limited energy power source to the power management backend module, and an interface list module in communication with the power management backend module to provide interface state information of the network interface module to the power management backend module. The power management backend module determines when the network interface module is to be set to the on state, the doze state, and the off state using a state machine. The power management module determines that the network interface module is to be set to the doze state after a delayed sleep timer has expired, a scan has been completed, or a beacon indicates that no traffic is queued for the computing device when the network interface module is operating in a power save mode.

[0012] A delayed sleep time is used to improve network throughput for devices operating in a power save mode by waiting for a specified time after a packet is sent before setting the network interface module to a doze state. This allows an application to receive a response without having to wait for the next beacon interval or listening interval provided that the recipient sends a response within the delayed sleep time. A delay sleep timer is used to provide the timing function. The delay sleep timer is set after a packet is sent to an access point for distribution and the network interface module is set to the doze state after the delay sleep timer has timed out. The delay sleep timer is reset if another packet is being sent to the access point while the delay sleep timer is counting. The delay sleep time is determined for each packet and is based upon an estimated round trip time of the packet being sent.

[0013] Additional features and advantages of the invention will be made apparent from the following detailed description of illustrative embodiments which proceeds with reference to the accompanying figures.

BRIEF DESCRIPTION OF THE DRAWINGS

[0014] While the appended claims set forth the features of the present invention with particularity, the invention, together with its objects and advantages, may be best understood from the following detailed description taken in conjunction with the accompanying drawings of which:

[0015] FIG. 1 is a block diagram generally illustrating the architecture of an exemplary computer device in which an embodiment of the invention may be implemented;

[0016] FIG. 2 is a schematic diagram illustrating an exemplary operation environment for a computing device that implements an embodiment of the power saving mechanism of the invention;

[0017] FIG. 3 is an illustration of how a listening interval relates to a beacon interval;

[0018] FIG. 4 is flowchart showing the steps for determining what power mode of operation the network interface module is set to in accordance with the teaching of the present invention;

[0019] FIG. 5 is block diagram illustrating the power management module of the present invention;

[0020] FIG. 6 is an illustration of a state machine used in the present invention;

[0021] FIG. 7 is a line diagram illustrating a typical operation of a network interface module in a wireless network in accordance with the teaching of the present invention; and

[0022] FIG. 8 is an illustration of an alternate embodiment of the power management module of the present invention.

DETAILED DESCRIPTION OF THE INVENTION

[0023] This invention operates in a computing device having a network interface module for accessing a network and a limited energy power source, such as a battery pack or the like, that has a limited amount of energy stored therein. Current network interface modules stay remain in a high power state (transmitting, receiving, or listening) longer than needed when not sending network traffic. This time is wasted power consumption, which reduces the duration of the battery pack. This leads to having to replace or recharge the battery pack more frequently. It is desirable to reduce the amount of time the network interface module is in a high-power state when not sending traffic or scanning. The invention provides a method to conserve battery power based upon a user's preferences. Prior to describing the invention in detail, an exemplary computing device in which the invention may be implemented is first described with reference to FIG. 1.

[0024] The invention may be implemented in a system employing various types of machines, including cell phones, hand-held devices, wireless surveillance devices, microprocessor-based programmable consumer electronics, and the like, using instructions, such as program modules, that are executed by a processor. Generally, program modules include routines, objects, components, data structures and the like that perform particular tasks or implement particular abstract data types. The term "program" includes one or more program modules.

[0025] Turning to the drawings, wherein like reference numerals refer to like elements, the invention is illustrated as being implemented in a suitable computing environment. Although not required, the invention will be described in the general context of computer-executable instructions, such as program modules, being executed by a personal computer. Generally, program modules include routines, programs, objects, components, data structures, etc. that perform particular tasks or implement particular abstract data types. Moreover, those skilled in the art will appreciate that the invention may be practiced with other computer system configurations, including hand-held devices, multi-processor systems, microprocessor based or programmable consumer electronics, network PCs, minicomputers, mainframe computers, and the like. The invention may also be practiced in distributed computing environments where tasks are performed by remote processing devices that are linked through a communications network. In a distributed computing environment, program modules may be located in both local and remote memory storage devices.

[0026] FIG. 1 shows an exemplary computing device 100 for implementing an embodiment of the invention. In its most basic configuration, the computing device 100 includes at least a processing unit 102 and a memory 104. Depending on the exact configuration and type of computing device, the memory 104 may be volatile (such as RAM), non-volatile (such as ROM, flash memory, etc.) or some combination of the two. This most basic configuration is illustrated in FIG. 1 by a dashed line 106. Additionally, the device 100 may also have additional features/functionality. For example, the device 100 may also include additional storage (removable and/or non-removable) including, but not limited to, magnetic or optical disks or tapes. Such additional storage is illustrated in FIG. 1 by a removable storage 108 and a non-removable storage 110. Computer storage media includes volatile and nonvolatile, removable and non-removable media implemented in any method or technology for storage of information such as computer readable instructions, data structures, program modules or other data. The memory 104, the removable storage 108 and the non-removable storage 110 are all examples of computer storage media. Computer storage media includes, but is not limited to, RAM, ROM, EEPROM, flash memory or other memory technology, CDROM, digital versatile disks (DVD) or other optical storage, magnetic cassettes, magnetic tape, magnetic disk storage or other magnetic storage devices, or any other medium which can be used to store the desired information and which can be accessed by the device 100. Any such computer storage media may be part of the device 100.

[0027] The device 100 may also contain one or more communications connections 112 that allow the device to communicate with other devices. The communications connections 112 are an example of communication media. Communication media typically embodies computer readable instructions, data structures, program modules or other data in a modulated data signal such as a carrier wave or other transport mechanism and includes any information delivery media. The term "modulated data signal" means a signal that has one or more of its characteristics set or changed in such a manner as to encode information in the signal. By way of example, and not limitation, communication media includes wired media such as a wired network or direct-wired connection, and wireless media such as acoustic, RF, infrared and other wireless media. As dis-

cussed above, the term computer readable media as used herein includes both storage media and communication media.

[0028] The device 100 may also have one or more input devices 114 such as keyboard, mouse, pen, voice input device, touch-input device, etc. One or more output devices 116 such as a display, speakers, printer, etc. may also be included. All these devices are well known in the art and need not be discussed at greater length here.

[0029] In keeping with the intended application of the invention, the device 100 is configured as a mobile device. To that end, the device 100 is provided with a portable limited energy power source 120, such as a battery pack, a fuel cell, or the like. The limited energy power source 120 provides power for computations and data transmissions by the device 100. As shown in FIG. 2, the computing device 100 further includes a network interface module 201 for wirelessly communicating with different types of wireless networks. The network interface module 201 in this implementation includes a transmitter 122, which is coupled to an antenna 206 for transmitting data wirelessly over a suitable frequency channel. A receiver 126 is also coupled to the antenna 206 for receiving communication packets wirelessly transmitted from the networks that the device is communicating with. The network interface module 201 and the antenna 206 are part of the communication connections 112 in FIG. 1. In one embodiment, the network interface module 201 employs wireless configuration service over the IEEE 802.11 wireless connections to ease network configuration, including infrastructure networks and ad hoc networks. An exemplary network interface module is PCMCIA wireless card. It will be appreciated that the interface type and physical configuration of the network interface module is not critical to the invention. For instance, the interface type could be PCI or another type and the network interface module does not have to reside on a separate card. It may be included on the motherboard of the computer or even possibly built into the processor in the future.

[0030] Through the network interface module, the computing device 100 may communicate with different types of wireless networks. For instance, in the illustrated environment of FIG. 2, the computing device 100 may be a station connected wirelessly to an infrastructure network 230 through an access point 231 thereof. The computing device 100 may also be part of a peer-to-peer network 220, also referred to as an ad hoc network, that includes other computing devices, such as the computing devices 221, 222, and 223. Before connecting to either the access point 231 of the infrastructure network or the ad hoc network 220, the computing device 100 may be in a state of searching for devices that belong to the network by periodically scanning actively by sending probe requests and scanning for probe response signals transmitted by the access point or other devices. Alternatively, the computing device 100 may search passively by scanning for beacons transmitted by access points.

[0031] A network driver 203 controls the operation of the network interface module 201. The network driver 203 is either part of the operating system of the computing device 100 or a separate executable program running on the computing device 100. An exemplary network driver is the Network Driver Interface Specification (NDIS). The net-

work driver **203** is in communication with a power management module **202**, which dynamically directs the network interface module **201** to change power states as described herein. The power management module **202** is in communication with several components to obtain data used to determine which power state the network interface module **201** should be in. These components may include a scanning engine **204**, applications through API (application programming interface) **206**, power supply indicator **208**, power setting **210**, packet analyzer **212**, and statistics analyzer **214**.

[0032] The scanning engine **204** uses an interface to the power management module **202** to request that the network interface module **201** be put into a high power state when it needs to perform a scan. It will send a message to indicate that a scan has been completed to indicate that it does not need the network interface module **201** to remain in a high power state any longer. The scanning engine **204** adjusts the time between scans using an exponential function based upon scan history and scan results. Further details of the scanning engine **204** may be found in U.S. patent application Ser. No. 10/323,043, filed Dec. 18, 2002, hereby incorporated by reference in its entirety. Applications use API **206** to request the data that it transmits must be transmitted in a low or high power state. If the application has no preferences, it does not call the API **206**.

[0033] The operating system of the device **100** or another module (not shown) determines if power is being supplied by the limited energy power source **120** or from an ac source. It uses power supply indicator **208** to communicate to the power management module **202** whether the device **100** is being supplied power by an ac source or from the limited energy power source **120**. The user may specify the power setting it wants through power setting **210**. These power settings are high, medium, and low. The high power setting corresponds to a constant awake mode, the low power setting corresponds to a maximum power saving mode, and the medium power setting corresponds to a fast power saving mode and these power settings are described herein. Packet analyzer **212** determines when the network interface module **202** may be put in the doze state. The packet analyzer **212** observes packets sent through the network interface module **202** to determine when a client is not sending traffic. When sufficient time has passed between sending data, the packet analyzer **212** informs the power management module that it can set the network interface module **202** to a doze state. Statistics analyzer **214** only works for network drivers that support it. The packet analyzer **212** queries the statistics analyzer **214** to determine statistics for the connection to determine if the power level should be adjusted. The statistics include received signal strength, transmitted fragment count, failed count, retry count, multiple retry count, frame duplicate count, RTS success count, RTS failure count, ACK failure count, FCS error count, and transmitted frame count.

[0034] The power management module **202** and components **204-214** may reside in the system memory **104**, the removable storage **108** or the non-removable storage **110** in FIG. 1. While the power management module **202** and components are shown separately for clarity, it is recognized that the module **202** and some or all of the components may be part of the operating system or part of another module in the computing device **100**.

[0035] In the description that follows, the invention will be described with reference to acts and symbolic representations of operations that are performed by one or more computing devices, unless indicated otherwise. As such, it will be understood that such acts and operations, which are at times referred to as being computer-executed, include the manipulation by the processing unit of the device of electrical signals representing data in a structured form. This manipulation transforms the data or maintains it at locations in the memory system of the computer, which reconfigures or otherwise alters the operation of the computer in a manner well understood by those skilled in the art. The data structures where data is maintained are physical locations of the memory that have particular properties defined by the format of the data. However, while the invention is being described in the foregoing context, it is not meant to be limiting as those of skill in the art will appreciate that various of the acts and operations described hereinafter may also be implemented in hardware. Additionally, an access point will be used to describe the operation of the invention. It is understood that the invention will work in the ad hoc mode with peers and in other systems that have components that behave like access points and peers. In the description that follows, the interaction between the network interface module and access point (e.g., messages and notifications) can also be implemented between a peer and the like.

[0036] The invention controls the power to the network interface module **201** to three primary levels. These levels are on state, doze state, and off state. While three levels are described, an arbitrary number of levels may be used depending on the operating system, capabilities of the network interface module and driver. In the doze state, the system is in an idle state where the network interface module **201** is powered to the minimal power level it needs to maintain itself but not send any traffic. The invention provides a method for the network interface module **201** to spend as much time in the doze state when the network interface module **201** is not sending or receiving traffic or scanning.

[0037] In the on state, there are three power levels. These power levels are constant awake mode (CAM), maximum power saving mode (Max PSP) and fast power saving mode (Fast PSP). In the CAM mode, the network interface module **201** is fully powered and no power saving is employed. Prior to defining Max PSP and Fast PSP, the relationship between beacon interval and listening interval shall be explained. Turning now to FIG. 3, in many wireless systems, an access point periodically broadcasts a beacon frame that contains the timing information and other information, including a traffic indication map (TIM). The stations that receive the beacon frame adopt the access point's timer value in a received beacon if the received time is later than the stations own timer. The period between broadcasts is known as a beacon interval. A typical beacon interval is 100 ms.

[0038] FIG. 3 illustrates beacon intervals **300**, **302**, **304**, **306**, **308**. A listening interval is defined as a multiple of beacon intervals. In FIG. 3, listening interval **310** is four beacon intervals. Any number of beacon numbers may be used for a listening interval. Now that beacon interval and listening interval have been explained, Max PSP and Fast PSP will now be defined. In the Max PSP mode, the network interface module **201** is placed in the doze state when not receiving or sending traffic and only wakes up every listen-

ing interval. In the Fast PSP mode, the network interface module **201** is placed in the doze state when not receiving or sending traffic and wakes up every beacon interval. An access point periodically sends the TIM within a beacon to identify which devices using power saving mode have data frames waiting for them in the access point's buffer. The TIM identifies a station by an association ID that the access point assigned to the device **100** during the association process. In the off state, the network interface module **201** is turned off.

[0039] Now that the states have been described, the overall operation of the power management module **202** shall be described. Turning now to FIG. 4, the power management module **202** determines if the device **100** is using power from limited energy power source **120** or from a power line source (step **400**). If the device **100** is using power from a power line source, the power management module **202** sets the network interface module **201** to operate in the constant awake mode (step **402**). It should be noted that if the device **100** is an energy star compliant device (or the like), the power management module **202** operates as if the device is running off the limited energy power source **120** to conserve energy. A user may force the device **100** to be in the constant awake mode through power setting **210**.

[0040] If the device **100** is using power from a limited energy power source, the power management module **202** determines if the device **100** is associated with an access point (step **404**). The power management module **202** operates the network interface module **201** in one of the power saving modes (i.e., Max PSP or Fast PSP) if the device **100** is associated with an access point (step **406**). If the device **100** is not associated, the power management module **202** determines if the device **100** is in the scanning mode (step **408**). The scanning engine **204** provides this information to the module **202**. The power management module **202** operates the network interface module **201** in the constant awake mode if the device **100** is scanning (step **410**). If the device **100** is not in the scanning mode, the power management module **202** puts the network interface module **201** in the doze mode (step **412**).

[0041] When in one of the power savings modes, the power management module **202** receives information from the modules **204-214** and uses that information to set the power level of the network interface module **201**. The packet analyzer settings from packet analyzer **212** take precedence over the scanning settings from scanning engine **204** or application settings received from the API **206**. The rationale is that the packet analyzer determines the appropriate power level for the supported data transmission rate and if the card requires less than full power to achieve the data transmission rate, then power should be conserved. The exception is if neither the scanning engine **204** nor the application request high power and one of them requests low power, in which case the network interface module **201** can remain in low power state as there is no client requirement for it to be in a high power state. If none of the components provide input to the power management module **202**, then the power setting will remain in its existing state.

[0042] When there is data to send, the network interface module **202** will be set to the continually awake mode to send data from an application. The packet analyzer **212** determines an expected round trip time that it would take to

get traffic back from the last transmission. This time, called a delayed sleep time, is associated with each packet sent by the device **100**. When a packet is sent, the power management module **202** sets a timer for the delayed sleep time. After the timer times out and no traffic has been received, the network interface module **202** will be set to the doze state to save power. If there is more traffic to send, the timer is reset. The delayed sleep time is dynamic because it is based on the round trip time. The network interface module could be transmitting packets from multiple sessions. Packet transmissions from different session would have different round trip transmission (RTT) delays. The delayed sleep time is a dynamic value based on the maximum of the RTTs for the packet transmissions from all sessions. For example, pending packet transmission from one session may have a RTT of under 10 msec, while the other may have a RTT of 50 msec, in this case the delayed sleep would be based on the maximum between the two cases (e.g., 50 msec). Additionally, the RTT for a session may be different in situations where the packets are being sent to multiple locations. For example, a transmission that is being sent to Japan from the United States will have a longer delayed sleep time than a transmission being sent from the United States to another location within the United States. If the round trip time is longer than a beacon interval, the power management module determines if the network interface module can remain in the doze state for longer than the beacon interval based upon factors such as the risk of missing a return packet, the round trip time, etc. If the power management module determines that the network interface module cannot remain in the doze state for longer than a beacon interval, the power management module will set the network interface module to the powered up state to receive a beacon. Otherwise, the network interface module remains in the doze state until the delayed sleep timer expires.

[0043] The delayed sleep time improves network throughput for devices operating in a power save mode because it allows an application to receive a response without having to wait for the next beacon interval or listening interval provided that the recipient sends a response within the delayed sleep time. Additionally, an access point does not have to buffer the response, thereby conserving resources. Applications which are satisfied with this mode of operation do not need to call the API **206** and will not have any influence on the power setting chosen.

[0044] An application that specifically requires fast response will use the API **206** to tag packets accordingly. The power management module **202** will not be as aggressive in powering down the network interface module **201** to allow sufficient time for return traffic when an application has called the API **206**. For example, the network interface module **201** may be put in the constant awake mode for several beacon intervals and/or the delayed sleep time could be increased. The invention protects the device **100** against an application constantly tagging packets to intentionally draw down the limited energy power source **120** with a timer function. If an application calls the API **206**, the power management module **202** starts a timer. If the application (or any other application) does not send any more packets, the timer will time out after a multiple of the round-trip-time for the traffic has elapsed, allowing the power management module **202** to set the network interface module **201** to the doze state.

[0045] The power management module 202 communicates with the network interface module using object identifiers (e.g., OIDs). The OIDs are to set or query the power state of the network interface module 201 and to set or query the delayed sleep time for transmitted traffic. The power state OID is `OID_802_11_Power_State` and the delayed sleep OID is `OID_802_11_Delayed_Sleep`. Parameters for the `OID_802_11_Power_State` are a setting to switch the network interface module to the on state, a setting to switch the network interface module to the doze state, and a setting to switch the network interface module to the off state. The parameter for the `OID_802_11_Delayed_Sleep` is the delay sleep setting in milliseconds.

[0046] Now that the overall operation has been described, the modules within the power management module 202 will be described. Turning now to FIG. 5, the power management module 202 has a power management backend 500, a system state module 502, and an interface list module 504. The power management backend 500 uses a state machine to manage the power state of the network interface module 201 based on the current state of the device 100. The state information includes global system state information from the system state module 502 and per-interface state information from the interface list module 504. The global system state information includes whether the device 100 is operating from the limited energy power source 120 or from an ac source. The per-interface state information includes whether the device 100 is associated on an interface, whether a scan is being requested, and plug and play events. The power setting 210 is also an input to the power management backend 500.

[0047] The state machine is illustrated in FIG. 6. The power management module 201 will set the network interface module 201 to the doze state 602 from the on state 600 for several conditions. These conditions include when the delayed sleep timer since the last sent packet has expired (line 604). If the delayed sleep time is longer than a beacon interval, the network interface module 201 is set to the doze state 602. Other conditions are when a scan has been completed (line 606), when the network interface module 201 has woken up to receive a beacon and no traffic is waiting to be sent to the device 100 (line 608), and when the device 100 switches from a power line source to the limited energy power source 120 and no traffic is flowing (line 610).

[0048] The power management module 201 will set the network interface module 201 to the on state 600 from the doze state 602 for several conditions. These conditions include when the device 100 has a packet to transmit (line 612), when the network interface module 201 needs to scan for available networks (line 614), when the network interface module 201 needs to wake up to receive a beacon (line 616) and when the device 100 switches from limited energy power source 120 to ac power (line 618). If the device 100 is an energy compliant device or the like, the network interface module 201 remains in the doze state when the device 100 switches from limited energy power source 120 to ac power. The power management module 201 will set the network interface module 201 to the off state 620 from the doze state 602 if an idle timer has expired (line 622). The power management module 201 will set the network interface module 201 to the on state 600 from the off state 620 if the device 100 has a packet to send and the network interface module 201 was put in the off state (line 624).

[0049] A typical operation scenario when the network interface module 201 is operating in the Max PSP or Fast PSP mode is illustrated in FIG. 7. When the device 100 is not sending or receiving packets, it enters the doze state after the delayed sleep time has passed. Before entering the doze state, a packet is sent to the access point 231 to indicate that the network interface module 201 in device 100 is entering the doze state (line 700). The access point 231 buffers packets (represented by line 702) destined for device 100 while the network interface module 201 is in the doze state. The access point 231 periodically sends beacons. As previously indicated, the beacon contains a traffic indication map that identifies which devices using power saving mode have data frames waiting for them in the access point's buffer. When the network interface module 201 is set to the on state to receive a beacon after a beacon interval has passed if the network interface module 201 is being operated in the Fast PSP mode (or in the case of Max PSP, after a listening interval has passed), it receives a beacon packet (line 704) and learns via the traffic indication map if at least one packet for the device 100 is buffered at the access point 231.

[0050] The network interface module 201 sends a message to the access point indicating that it is awake if the traffic indication map indicates a packet for the device 100 is buffered (line 706). After receiving the message, the access point 231 sends a buffered packet to the device 100 (line 708). If there is more packets queued in the buffers, the access point 231 provides an indication in the first packet sent and sends all the packets. The last packet to be sent has an indication that there is no more data in the access point's buffers for the device 100. After all of the packets have been received, a packet is sent to the access point 231 to indicate that the network interface module 201 is entering the doze state (line 710). The network interface module 201 will re-enter the doze only if it has no pending packets to be transmitted. If there are packets for transmission the network interface module 201 will first send all the pending packets and only after it has exhausted its transmit queues will it send an indication to the access point that it is entering the doze state. This takes care of the case where the network interface module 201 has queued packets to be transmitted to the access point or the peer while it was in the doze state. This process repeats itself for as long as the device 100 is associated with the access point 231. When sending a packet, the network interface module 201 sends the packet to the access point 231 for routing to the packet's destination and waits for the delayed sleep time to time out. After the delayed sleep time has passed, the network interface module 201 sends a message to the access point 231 that the module 201 is entering the doze state and then the module 201 enters the doze state.

[0051] Every network media type either does or could be required to implement power management. Turning now to FIG. 8, an alternate embodiment of the power management mechanism of the present invention is illustrated in an operating environment 800. In this embodiment, the power management module 802 receives commands from components that provide an input to the power management module 802 and that are not specific to a particular network. For purposes of explanation, these components will be called power setting components. The power management module 802 translates the commands and provides power settings to network adapter/interfaces. This allows the power setting components such as the power supply indicator,

application programming interface, user power setting and the like to specify its power management requirement to the power management translator **802** without needing to specify their requirements to a specific network adapter. Each power setting component is also able to specify to which device the setting applies, if applicable. Components particular to a network, such as scanning engine **204**, packet analyzer **212**, and statistics analyzer **214** remain in a network specific power management module such as power management module **202** for 802.11 WLAN. Components particular to the GPRS (General Packet Radio Service) are in WWAN power management module **814**, which controls the power level in the GPRS network interface module **816**. Similarly, components particular to a LAN are in Ethernet power management module **818**, which controls the power level in LAN adapter **820**.

[0052] The operating system of the device **100** or another module (not shown) determines if power is being supplied by the limited energy power source **120** or from an ac source. It uses power supply indicator **804** to communicate to the power management translator **802** whether the device **100** is being supplied power by an ac source or from a limited energy power source. Applications use API **806** to request the data that it transmits must be transmitted in a low or high power state. If the application has no preferences, it does not call the API **806**. The user may specify the power setting it wants through user power setting **808**. These power settings are high, medium, low, or no power management. These power settings may be extended to additional settings for interface modules that provide more power settings. In one embodiment, when the device **100** is being supplied power from an ac source, the user settings are ignored. Additionally, if there is a real-time application actively engaged in a call and the user has specified high power management, the power management translator **802** temporarily overrides the user setting.

[0053] The base power setting **810** is used to instruct a power management module to shut a network interface module down if thermal conditions are exceeded or if the user has specified a global power setting. The roaming component **812** also has an impact on power management. If the 802.11 network interface module **201** is the active network connection, the power management translator **802** specifies to the other power management modules **814**, **818**, **822** that their network interface modules should be powered off. If two network interface modules are active at the same time (e.g. a LAN and a WLAN) then the power management translator **802** specifies a relevant power setting to both of them and specify that the other network interface modules should be powered off. Each power management component uses the power level setting provided by the power management translator **802** to determine the level of power management required for the particular network interface module the power management module is controlling.

[0054] The power management translator **802** has a system state module and an interface module. The system state module is in communication with the power supply indicator **804**, API **806**, user power setting **808**, base power setting **810**, and roaming component **812**. The interface module communicates with power management modules **202**, **814**, **818**, **822** and provides the desired power setting to the power management modules **202**, **814**, **818**, **822** based on the inputs from the power supply indicator **804**, API **806**, user power

setting **808**, base power setting **810**, and roaming component **812** as described above. Using the 802.11 power management module **202** as an example, the power management translator **802** sends the 802.11 power management module **202** a setting of H/M/L/Idle/Off (high power setting, medium power setting, low power setting, no power management, or off). The 802.11 power management module **202** translates this setting into the correct power state (On/Doze/Off) for the network interface module **202** and controls the network interface module based upon the operation parameters specific to the 802.11 network interface module **201**. For example, if a low power setting is specified to power management module **202** from the power management translator, the power management module **202** sets the network interface module to the doze state for listening intervals as previously described (e.g., no scanning is being performed, the delayed sleep timer has timed out, etc.). Similarly, if the power management translator **802** provides a medium power setting to power management module **202**, the power management module **202** sets the network interface module to the doze state for beacon intervals as previously described.

[0055] Power management modules for the other media types use the power setting provided by the power management translator **802** to use the appropriate power management setting for their network interface module. For example, wireless WAN might support more or less than three power settings, so the WWAN power management module **814** uses the power setting provided by the power management translator **802** to determine the correct power management setting for the GPRS network interface module **816**. For example, power settings for a device in a GPRS network is idle or fully powered. When the device is transmitting or receiving call traffic, the device is fully powered. When the device is not in a call or is in a call and is not transmitting or receiving, the device is in a low power setting.

[0056] The power management translator **802** provides the ability to seamlessly add a new media type. A new media type registers with the power management translator **802** by calling an API and providing a globally unique identifier (GUID) and a friendly name. The power management translator **802** uses these to provide the generic setting to the power management module **822** of the network interface module for the media type. The power management translator **802** is not required to have knowledge of the functioning of the specific power management module **822**. Similarly, the individual power management module **822** is not required to be aware of the power management requirements of the upper layer components **804** to **812** as these are translated into a single setting.

[0057] It can be seen that a method to conserve power has been presented by optimizing the power consumption of a network interface module of a computing device. While the description has been described in terms of time intervals that are used in 802.11 wireless networks, the method is useable in other types of wireless networks, including Bluetooth, GPRS, Hiperlan and other wireless LAN network types that use beacon intervals and the like and networks such as Ethernet LAN.

[0058] In view of the many possible embodiments to which the principles of this invention may be applied, it

should be recognized that the embodiment described herein with respect to the drawing figures is meant to be illustrative only and should not be taken as limiting the scope of invention. For example, the power management module can also turn off the transmitter in wireless network interface modules that support this functionality. In this case, the network interface module (or power management module) may choose to keep the receive path powered-on while the transmit path is put into a lower power state. This mechanism could be used while the network interface module performs passive scans where it does not actively transmit probe requests (per IEEE 802.11 and the like), but rather passively gathers information regarding the networks around by receiving beacons and broadcast probe responses from nodes in the range of the network interface module. Those of skill in the art will recognize that the elements of the illustrated embodiment shown in software may be implemented in hardware and vice versa or that the illustrated embodiment can be modified in arrangement and detail without departing from the spirit of the invention. Therefore, the invention as described herein contemplates all such embodiments as may come within the scope of the following claims and equivalents thereof.

We claim:

1. A method for managing power in a network interface module in a mobile device, the method comprising the steps of:

determining if the mobile device is being powered from a limited energy power source;

if the mobile device is being powered from the limited energy power source:

determining if the mobile device is associated with an access point;

operating the network interface module in one of a fast power save mode and a maximum power saving mode if the mobile device is associated with an access point;

if the mobile device is not associated with an access point:

determining if the network interface module is scanning;

operating the network interface module in a constant awake mode if the network interface module is scanning; and

setting the network interface module to a doze mode if the network interface module is not scanning.

2. The method of claim 1 further comprising the step of setting the network interface module to a constant awake mode if the mobile device is being powered from a power line source.

3. The method of claim 1 further comprising the step of setting the network interface module to one of the constant awake mode, the fast power save mode and the maximum power save mode in accordance with a user preference.

4. The method of claim 1 further comprising the step of setting the network interface module to the constant awake mode if one of the mobile device is associated and the scan has been requested.

5. The method of claim 1 further comprising the step of operating the network interface module in the fast power save mode if one of a packet has a high priority and an application tags a packet to indicate a fast response is required.

6. The method of claim 1 wherein the step of operating the network interface module in one of a fast power save mode and a maximum power saving mode if the mobile device is associated with a network comprises operating the network interface module in a fast power save mode.

7. The method of claim 6 wherein the step of operating the network interface module in a fast power save mode comprises the steps of:

a) determining when the network interface module can enter a doze state;

b) sending a notification to an access point that the network interface module is being set to the doze state;

c) setting the network interface module to the doze state after the notification has been sent;

d) setting the network interface module to an on state to receive a beacon for each beacon interval;

e) repeating steps b-f if the beacon indicates that no packets are queued for the mobile device; and

f) repeating steps a-f if the beacon indicates that at least one packet is queued for the mobile device.

8. The method of claim 7 further comprising the step of repeating steps a-f until one of the mobile device is disassociated with the access point and operation of the network interface module has been changed to one of the constant awake mode and the maximum power saving mode.

9. The method of claim 7 wherein the step of determining when the network interface module can enter a doze state comprises determining that a delayed sleep timer has expired.

10. The method of claim 7 wherein the step of determining when the network interface module can enter a doze state comprises determining that one of a delayed sleep timer has expired, a scan has been completed, a beacon indicates that no traffic is queued for the mobile device, and a power source switches from a limited energy power source to a power line source.

11. The method of claim 1 wherein the step of sending a notification to an access point that the network interface module is being set to the doze state comprises the step of sending the notification after all pending packets have been transmitted.

12. The method of claim 1 wherein the step of setting the network interface module to the doze state after the notification has been sent comprises setting a transmit path of the network interface module to a doze state and keeping a receive path of the network interface module powered.

13. The method of claim 1 wherein the step of operating the network interface module in one of a fast power save mode and a maximum power saving mode if the mobile device is associated with a network comprises operating the network interface module in a maximum power save mode.

14. The method of claim 13 wherein the step of operating the network interface module in a maximum power save mode comprises the steps of:

a) determining when the network interface module can enter a doze state;

- b) sending a notification to an access point that the network interface module is being set to a doze state;
- c) setting the network interface module to the doze state after the notification has been sent;
- d) setting the network interface module to an on state to receive a beacon after a listening interval has passed;
- e) repeating steps b-f if the beacon indicates that no packets are queued for the mobile device; and
- f) repeating steps a-f if the beacon indicates that at least one packet is queued for the mobile device.

15. The method of claim 14 further comprising the step of repeating steps a-f until one of the mobile device is disassociated with the access point and operation of the network interface module has been changed to one of the constant awake mode and the fast power saving mode.

16. The method of claim 14 wherein the step of determining when the network interface module can enter a doze state comprises determining that a delayed sleep timer has expired.

17. The method of claim 14 wherein the step of determining when the network interface module can enter a doze state comprises determining that one of a delayed sleep timer has expired, a scan has been completed, a beacon indicates that no traffic is queued for the mobile device, and a power source switches from a limited energy power source to a power line source.

18. A power management system for use in a mobile device having a network interface module comprising:

- a power management module for controlling a power state of the network interface module to operate in one of a constant awake mode, a maximum power saving mode, and a fast power saving mode, the power management module comprising:

- a power management backend module to determine when the network interface module is to be set to one of an on state and a doze state;

- a system state module in communication with the power management backend module to provide system state information to the power management backend module; and

- an interface list module in communication with the power management backend module to provide interface state information of the network interface module to the power management backend module.

19. The system of claim 18 further comprising a packet analyzer in communication with the power management module, the packet analyzer determining when the mobile device is not sending traffic.

20. The system of claim 18 further comprising a power supply indicator in communication with the power management module, the power supply indicator providing the power management module an indication if the mobile device is operating off a limited energy power source.

21. The system of claim 18 further comprising an application programming interface in communication with the power management module, the application programming interface providing an interface for an application to indicate that one of a packet requires a fast response and a packet has a high priority.

22. The system of claim 18 further comprising a power setting module in communication with the power management module, the power setting module providing an indication of a user preference of the power state.

23. The system of claim 18 further comprising a scanning engine in communication with the power management module, the scanning engine providing an indication to the program management module when the network interface module should be put in the on state for a scan.

24. The system of claim 18 wherein the power management backend module determines when the network interface module is to be set to one of an on state and a doze state using a state machine.

25. The system of claim 24 wherein the power management module determines that the network interface module is to be set to the doze state after one of a delayed sleep timer has expired, a scan has been completed, and a beacon indicates that no traffic is queued for the mobile device.

26. The system of claim 25 wherein the one of a delayed sleep timer has expired, a scan has been completed, and a beacon indicates that no traffic is queued for the mobile device comprises one of a delayed sleep timer has expired, a scan has been completed, a beacon indicates that no traffic is queued for the mobile device, and a power source switches from a limited energy power source to a power line source.

27. The system of claim 24 wherein the power management module determines that the network interface module is to be set to the on state after one of a notification that the mobile device has a packet to transmit is received, a notification that the network interface module needs to scan for available networks is received, a timer expires to indicate that the network interface module needs to receive a beacon, and a notification that the mobile device switches from a limited energy power source to a power line source is received.

28. The system of claim 18 wherein the power management module communicates with the network interface module using object identifiers, the object identifiers comprising:

- a power state object identifier to perform one of setting the power state of the network interface module and querying the network interface module to determine the power state of the network interface module; and

- a delayed sleep object identifier to perform one of setting a delayed sleep time and querying the network interface module to determine a present delayed sleep time.

29. The system of claim 28 wherein the power state object identifier has a plurality of settings comprising an on setting to switch the network interface module to the on state, a doze setting to switch the network interface module to the doze state, and an off setting to switch the network interface module to an off state.

30. The system of claim 28 wherein the delayed sleep time object identifier has a parameter setting to set the delay sleep time setting in milliseconds.

31. A computer readable medium having computer executable instructions for performing the steps of claim 1.

32. The computer readable medium of claim 31 having further computer executable instructions for performing the step of setting the network interface module to a constant awake mode if the mobile device is being powered from a power line source.

33. The computer readable medium of claim 31 having further computer executable instructions for performing the step of setting the network interface module to one of the constant awake mode, the fast power save mode and the maximum power save mode in accordance with a user preference.

34. The computer readable medium of claim 31 having further computer executable instructions for performing the step of setting the network interface module to the constant awake mode if one of the mobile device is associated and the scan has been requested.

35. The computer readable medium of claim 31 having further computer executable instructions for performing the step of operating the network interface module in the fast power save mode if an application tags a packet to indicate a fast response is required.

36. The computer readable medium of claim 31 wherein the step of sending a notification to an access point that the network interface module is being set to the doze state comprises the step of sending the notification after all pending packets have been transmitted.

37. The computer readable medium of claim 31 wherein the step of setting the network interface module to the doze state after the notification has been sent comprises setting a transmit path of the network interface module to a doze state and keeping a receive path of the network interface module powered.

38. The computer readable medium of claim 31 wherein the step of operating the network interface module in one of a fast power save mode and a maximum power saving mode if the mobile device is associated with a network comprises operating the network interface module in a fast power save mode, the step of operating the network interface module in a fast power save mode comprising the steps of:

- a) determining when the network interface module can enter a doze state;
- b) determining a delayed sleep time;
- c) sending a notification to an access point that the network interface module is being set to the doze state;
- d) setting the network interface module to the doze state after the notification has been sent;
- e) setting the network interface module to an on state to receive a beacon for each beacon interval;
- f) repeating steps c-g if the beacon indicates that no packets are queued for the mobile device; and
- g) repeating steps a-g if the beacon indicates that at least one packet is queued for the mobile device.

39. The computer readable medium of claim 38 having further computer executable instructions for performing the step of repeating steps a-g until one of the mobile device is disassociated with the access point and operation of the network interface module has been changed to one of the constant awake mode and the maximum power saving mode.

40. The computer readable medium of claim 38 wherein the step of determining when the network interface module can enter a doze state comprises determining that a delayed sleep timer has expired.

41. The computer readable medium of claim 38 wherein the step of determining when the network interface module can enter a doze state comprises determining that one of a

delayed sleep timer has expired, a scan has been completed, a beacon indicates that no traffic is queued for the mobile device, and a power source switches from a limited energy power source to a power line source

42. The computer readable medium of claim 31 wherein the step of operating the network interface module in one of a fast power save mode and a maximum power saving mode if the mobile device is associated with a network comprises operating the network interface module in a maximum power save mode, the step of operating the network interface module in a maximum power save mode comprises the steps of:

- a) determining when the network interface module can enter a doze state;
- b) determining a delayed sleep time;
- c) sending a notification to an access point that the network interface module is being set to a doze state;
- d) setting the network interface module to the doze state after the notification has been sent;
- e) setting the network interface module to an on state to receive a beacon after a listening interval has passed;
- f) repeating steps c-g if the beacon indicates that no packets are queued for the mobile device; and
- g) repeating steps a-g if the beacon indicates that at least one packet is queued for the mobile device.

43. The computer readable medium of claim 42 having further computer executable instructions for performing the step of repeating steps a-g until one of the mobile device is disassociated with the access point and operation of the network interface module has been changed to one of the constant awake mode and the fast power saving mode.

44. The computer readable medium of claim 42 wherein the step of determining when the network interface module can enter a doze state comprises determining that one of a delayed sleep timer has expired, a scan has been completed, a beacon indicates that no traffic is queued for the mobile device, and a power source switches from a limited energy power source to a power line source.

45. A method to send packets in a device having a network interface module operating in a power saving mode, the method comprising the steps of:

- sending a packet to an access point for distribution;
- setting a delay sleep timer to time out after a delay sleep time;
- sending a message to the access point after the delay sleep timer has timed out to indicate the network interface module is entering a doze state; and

setting the network interface module to the doze state.

46. The method of claim 45 further comprising the step of resetting the delay sleep timer if at least one other packet is being sent to the access point while the delay sleep timer is counting.

47. The method of claim 45 further comprising the step of determining a delay sleep time for each of the packet and the at least one other packet.

48. The method of claim 45 further comprising the step of determining the delay sleep time for the packet.

49. The method of claim 48 wherein the step of determining the delay sleep time includes determining an estimated round trip time.

50. The method of claim 49 wherein the step of determining the delay sleep time includes setting the delay sleep time to the estimated round trip time if the estimated round trip time is lower than a beacon interval time.

51. The method of claim 48 wherein the step of determining the delay sleep time includes setting the delay sleep time to a time less than a beacon interval time if the estimated round trip time is at least a beacon interval time.

52. The method of claim 45 wherein the network interface module is transmitting packets from a plurality of sessions, the method further comprising the steps of:

determining a maximum round trip transmission time for the plurality of sessions; and

setting the delay sleep time to the maximum round trip time.

53. The method of claim 52 wherein the step of setting the delay sleep time to the maximum round trip time comprises the steps of:

setting the delay sleep time to the maximum round trip time if the estimated round trip time is lower than a beacon interval time; and

setting the delay sleep time to a time less than a beacon interval time if the maximum round trip time is at least a beacon interval time

54. A power management translator for providing power setting commands to a plurality of network interface modules in a mobile device comprising:

a system state module for receiving power settings from power setting components; and

an interface module for communicating a power setting to each network interface module.

55. The power management translator of claim 54 wherein the power setting components comprises at least one of a power supply indicator component, an API component, an user power setting component, a base power setting component, and a roaming component.

56. The power management translator of claim 54 wherein the interface module provides one of a high power setting, a medium power setting, and a low power setting to each network interface module.

57. The power management translator of claim 54 wherein the power management translator ignores a user power setting if the mobile device is being powered from an ac source.

58. The power management translator of claim 54 wherein the power management translator overrides a user power setting if a real-time application is engaged in a call.

59. The power management translator of claim 54 wherein the power management translator translates power settings from the power setting components to a single power setting for each network interface module.

* * * * *