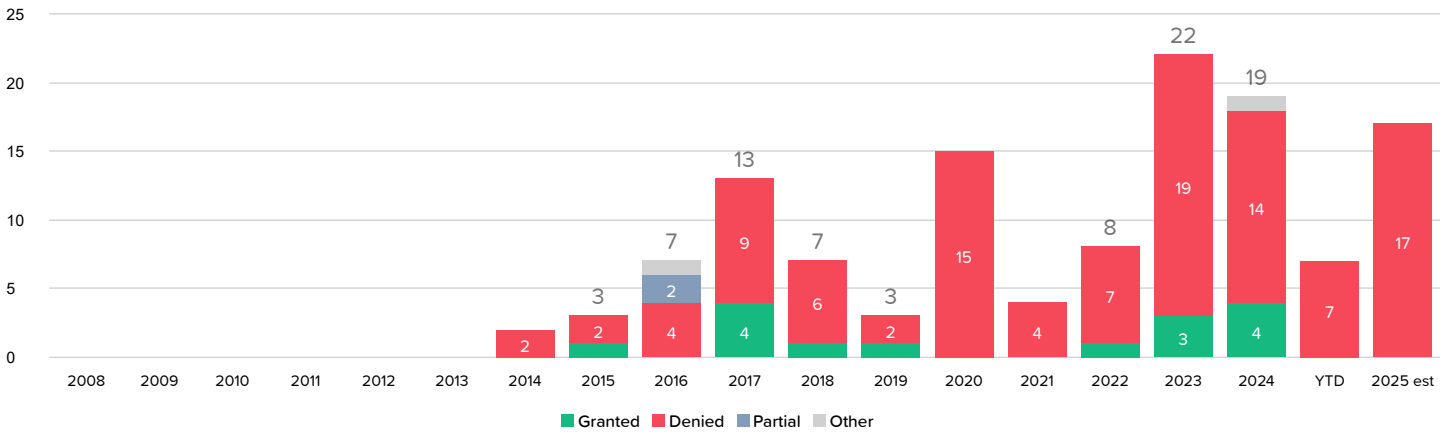


Motion Success for Stay Pending IPR

[VIEW IN BROWSER](#)

Judges: Rodney Gilstrap Postures of Motion: Motion by a Party Types of Document: Motion to Stay Pending Inter Partes Review

Motion Success by Year



This chart shows the outcomes of decisions on motions of the specified type(s) by year. Estimated current year totals are computed by assuming new decisions will be issued, and will reach the same proportionate outcomes, as decisions which have already occurred this year to date.

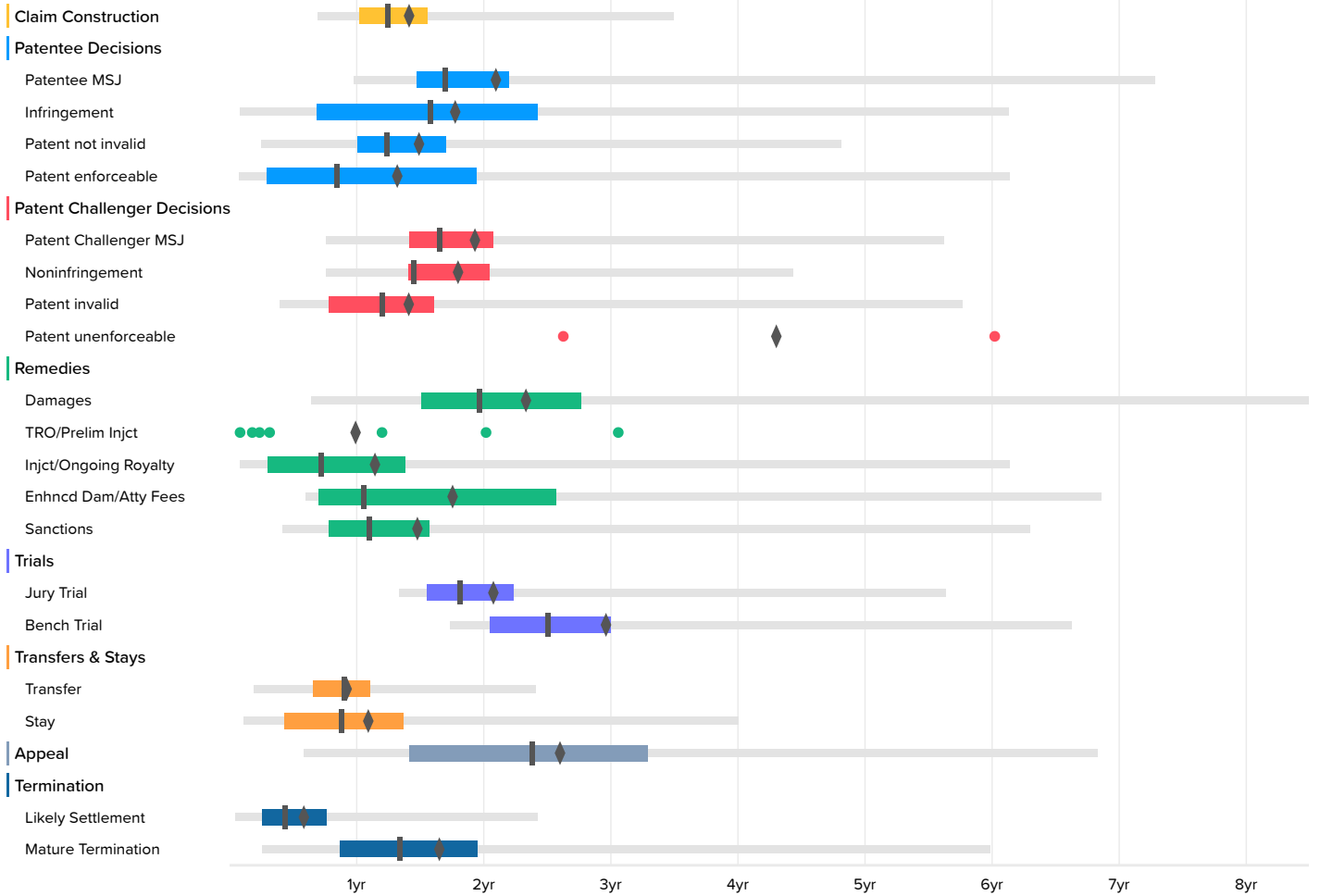
	2008	2009	2010	2011	2012	2013	2014	2015	2016	2017	2018	2019	2020	2021	2022	2023	2024	YTD	2025 est
Granted	0	0	0	0	0	0	0	1	0	4	1	1	0	0	1	3	4	0	
Denied	0	0	0	0	0	0	2	2	4	9	6	2	15	4	7	19	14	7	17
Partial	0	0	0	0	0	0	0	0	2	0	0	0	0	0	0	0	0	0	
Other	0	0	0	0	0	0	0	0	1	0	0	0	0	0	0	0	1	0	
Total	0	0	0	0	0	0	2	3	7	13	7	3	15	4	8	22	19	7	17

Time to Milestones

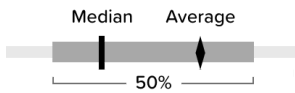
VIEW IN BROWSER

Judges: Rodney Gilstrap Case Filing Date: On or After Jan. 1st, 2008

U.S. District Courts (9336 cases)



The milestones shown in this chart are based on Docket Navigator's classification of orders matching the search criteria specified to generate the report. Each box plot shows the time between the filing of the complaint and the named milestone. The left and right ends of the box labeled 50% are respectively the first- and third-quartiles. The lighter line shows events between the 2nd and 98th percentile. The remaining points are outliers, represent at most 4% of the data, and are not shown, however, the true minimum and maximum are included in the accompanying table and the mean includes outliers. Fewer than ten events occurring in a category are shown as dots instead of a box plot.



U.S. District Courts

	Occurrences	Minimum	2nd Percentile	First Quartile	Median	Third Quartile	98th Percentile	Maximum	Average
Claim Construction	538	0.4	8.3	12.2	14.9	18.7	41.9	86.8	17.2
Patentee MSJ	73	3.1	11.7	17.6	20.3	26.3	87.2	87.2	25.3
Infringement	136		1.0	8.2	18.9	29.0	73.5	107.2	21.5
Patent not invalid	529		3.0	12.0	14.9	20.4	57.6	107.2	18.1
Patent enforceable	64	0.7	1.0	3.5	10.1	23.2	73.5	101.7	16.0
Patent Challenger MSJ	208	4.9	9.1	17.0	19.8	24.9	67.3	106.5	23.4
Noninfringement	245	-1.5	9.1	16.9	17.3	24.5	53.1	87.0	21.8
Patent invalid	256		4.7	9.4	14.4	19.2	69.0	106.3	17.1
Patent unenforceable	2	31.4			51.8			72.1	51.8
Damages	90	0.2	7.6	18.0	23.5	33.1	101.7	107.2	28.2
TRO/Prelim Injct	7	1.0			3.8			36.6	12.1
Injct/Ongoing Royalty	88	0.7	1.0	3.6	8.6	16.5	73.5	107.2	13.9
Enhncd Dam/Atty Fees	62	2.3	7.2	8.4	12.7	30.8	82.2	92.2	21.3
Sanctions	16	2.2	5.0	9.3	13.1	18.8	75.4	75.4	17.9
Jury Trial	109	7.3	16.0	18.6	21.7	26.8	67.5	87.0	25.1
Bench Trial	24	19.6	20.8	24.5	30.0	35.9	79.3	79.3	35.7
Transfer	491		2.3	7.9	10.8	13.2	28.8	44.2	11.3
Stay	903	0.0	1.3	5.1	10.6	16.4	48.0	105.4	13.3
Appeal	155	1.2	7.0	16.9	28.5	39.4	81.8	168.0	31.4
Likely Settlement	6741		0.6	3.1	5.2	9.1	29.0	90.9	7.2
Mature Termination	1726	0.2	3.0	10.4	16.0	23.3	71.7	120.9	20.0

Time to Milestones

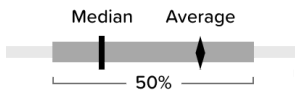
[VIEW IN BROWSER](#)

Judges: Rodney Gilstrap Case Filing Date: On or After Jan. 1st, 2019

U.S. District Courts (2886 cases)



The milestones shown in this chart are based on Docket Navigator's classification of orders matching the search criteria specified to generate the report. Each box plot shows the time between the filing of the complaint and the named milestone. The left and right ends of the box labeled 50% are respectively the first- and third-quartiles. The lighter line shows events between the 2nd and 98th percentile. The remaining points are outliers, represent at most 4% of the data, and are not shown, however, the true minimum and maximum are included in the accompanying table and the mean includes outliers. Fewer than ten events occurring in a category are shown as dots instead of a box plot.



U.S. District Courts

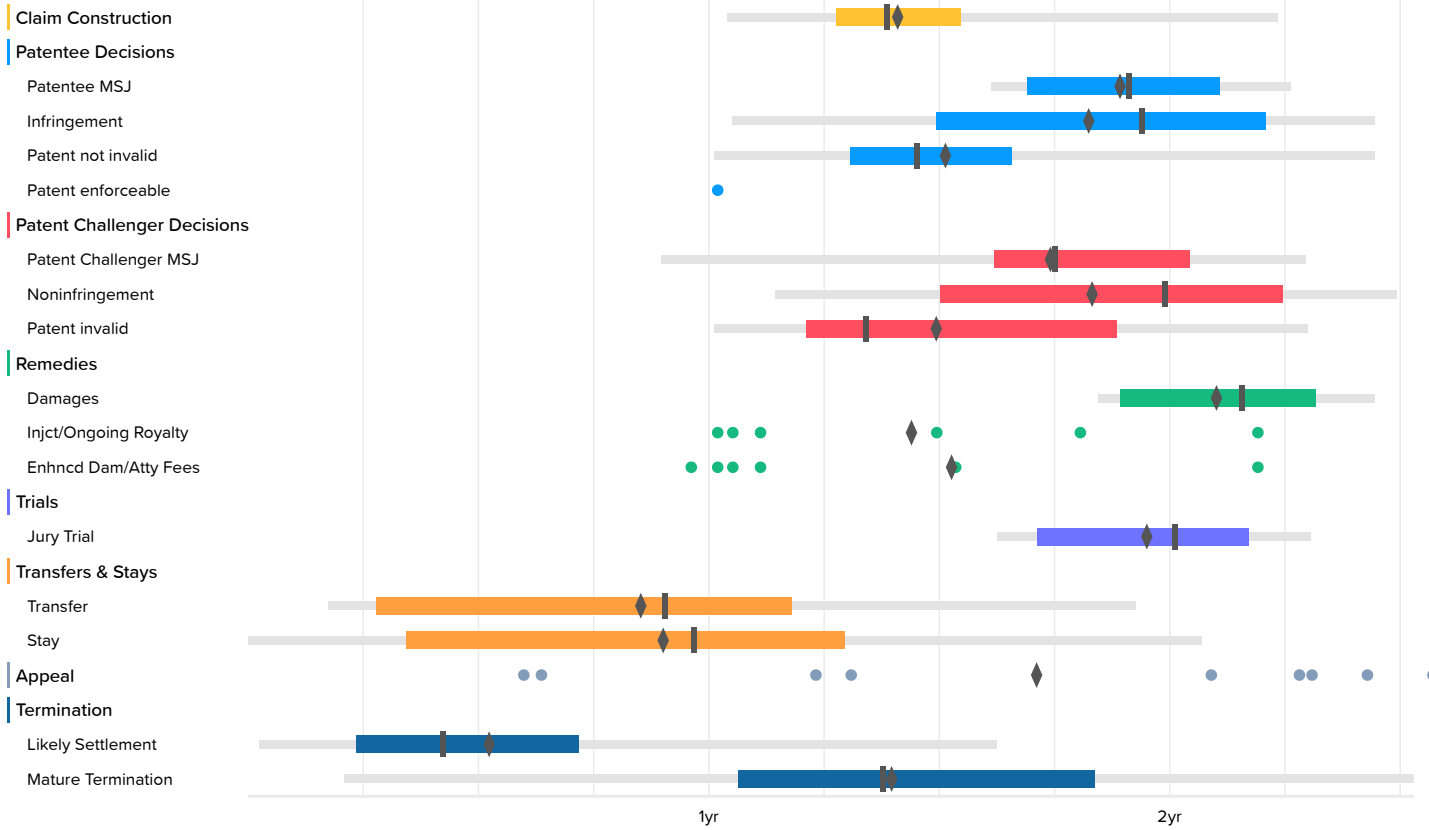
	Occurrences	Minimum	2nd Percentile	First Quartile	Median	Third Quartile	98th Percentile	Maximum	Average
Claim Construction	199	0.4	7.8	11.5	14.4	17.0	26.8	30.1	14.5
Patentee MSJ	40	3.1	10.1	17.1	19.3	24.2	33.4	33.4	19.9
Infringement	45	1.1	2.3	13.6	20.6	28.1	50.1	50.1	21.7
Patent not invalid	222	1.1	7.5	11.6	15.5	20.1	34.3	50.1	16.6
Patent enforceable	11	1.1	3.0	12.2	19.6	24.0	34.0	34.0	18.0
Patent Challenger MSJ	83	5.9	10.8	16.4	19.1	22.0	31.1	35.4	19.6
Noninfringement	40	5.9	10.5	15.4	19.8	26.0	34.3	34.3	20.8
Patent invalid	58	3.8	8.2	11.4	13.5	19.8	26.9	27.6	15.1
Patent unenforceable	1	31.4						31.4	31.4
Damages	36	2.3	11.9	20.3	23.5	28.9	50.1	50.1	25.2
TRO/Prelim Injct	2	24.2			30.4			36.6	30.4
Injct/Ongoing Royalty	21	1.1	2.3	5.6	12.6	15.9	30.6	30.6	12.6
Enhncd Dam/Atty Fees	17	2.3	7.2	11.7	13.0	23.7	34.3	34.3	16.2
Sanctions	6	8.9			14.0			24.2	14.6
Jury Trial	43	14.3	16.0	18.8	21.7	25.1	33.4	33.4	21.8
Bench Trial	7	19.6			23.4			30.5	25.1
Transfer	99	0.6	2.2	7.3	9.7	13.1	23.1	27.4	10.0
Stay	250	0.0	1.0	6.1	11.2	16.4	34.3	38.7	12.3
Appeal	39	1.2	7.1	24.4	28.5	34.3	60.3	60.3	27.4
Likely Settlement	1632		0.4	3.0	5.3	9.2	21.6	63.8	6.9
Mature Termination	388	0.6	2.8	12.9	17.6	23.9	61.9	61.9	19.6

Time to Milestones

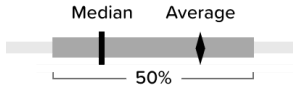
[VIEW IN BROWSER](#)

Judges: Rodney Gilstrap Case Filing Date: On or After Jan. 1st, 2022

U.S. District Courts (2093 cases)



The milestones shown in this chart are based on Docket Navigator's classification of orders matching the search criteria specified to generate the report. Each box plot shows the time between the filing of the complaint and the named milestone. The left and right ends of the box labeled 50% are respectively the first- and third-quartiles. The lighter line shows events between the 2nd and 98th percentile. The remaining points are outliers, represent at most 4% of the data, and are not shown, however, the true minimum and maximum are included in the accompanying table and the mean includes outliers. Fewer than ten events occurring in a category are shown as dots instead of a box plot.



U.S. District Courts

	Occurrences	Minimum	2nd Percentile	First Quartile	Median	Third Quartile	98th Percentile	Maximum	Average
Claim Construction	84	0.4	12.5	15.3	16.6	18.5	26.8	30.1	17.0
Patentee MSJ	15	17.5	19.3	20.3	23.0	25.3	27.1	27.1	22.8
Infringement	15	12.2	12.6	17.9	23.3	26.5	29.3	29.3	22.0
Patent not invalid	85	10.3	12.1	15.7	17.4	19.9	29.3	29.9	18.2
Patent enforceable	1	12.2						12.2	12.2
Patent Challenger MSJ	29	5.9	10.8	19.4	21.0	24.5	27.5	27.5	21.0
Noninfringement	16	5.9	13.7	18.0	23.9	26.9	29.9	29.9	22.1
Patent invalid	22	9.6	12.1	14.5	16.1	22.6	27.6	27.6	18.0
Damages	10	20.6	22.1	22.7	25.9	27.8	29.3	29.3	25.3
Injct/Ongoing Royalty	6	12.2			15.6			26.3	17.3
Enhncd Dam/Atty Fees	7	11.5			13.3			34.3	18.4
Jury Trial	15	18.9	19.5	20.6	24.1	26.1	27.7	27.7	23.5
Transfer	50	0.6	2.1	3.3	10.9	14.1	23.1	23.1	10.3
Stay	133	0.0		4.1	11.6	15.5	24.8	35.8	10.9
Appeal	9	7.2			25.1			30.9	20.6
Likely Settlement	1098	0.1	0.3	2.8	5.1	8.6	19.5	31.0	6.4
Mature Termination	140	0.6	2.5	12.8	16.5	22.0	30.4	31.4	16.8