

Every thing for
every holiday.



Shop early gifts

Meaning of **into** in English



into

preposition

US  /'ɪn.tu:/ UK  /'ɪn.tu: /

into preposition (INSIDE)

Add to word list 

A1

to the inside or middle of a place, container, area, etc.:

- *Would you put the jar back into the cupboard for me, please?*
- *Let's go into the garden.*
- *Stop running around and get into bed!*
- *I can't get into these pants anymore. They're far too small for me.*

– Fewer examples

- *They climbed into the truck and drove away.*
- *The door opened and a nurse came into the room.*
- *Crack three eggs into a bowl and mix them together.*
- *He thrust his hands into his pockets.*
- *He took off his clothes and got into the bath.*

+ SMART Vocabulary: related words and phrases



Are you an English teacher?

Yes

No

into preposition (CHANGE)



A2

used to show when a person or thing is changing from one form or condition to another:

- *Peel the cucumber and chop it into small cubes.*
- *There was a series of explosions and the van burst into flames (= started to burn violently).*
- *Her novels have been translated into 19 languages.*
- *We're planning to turn the smallest bedroom into an office.*

+ More examples

+ SMART Vocabulary: related words and phrases



Are you looking to improve your English vocabulary?

No

into *preposition* (TOUCHING FORCEFULLY)



B1

used to show movement that involves something touching something else with a lot of force but without moving inside it:

- *He's always walking into things when he doesn't have his glasses on.*

+ More examples

+ SMART Vocabulary: related words and phrases



into *preposition* (TOWARD)



B1

in the direction of something or someone:



+ more examples

+ SMART Vocabulary: related words and phrases

into preposition (ABOUT)



involving or about something:

- *an inquiry into the cause of the accident*

+ More examples

+ SMART Vocabulary: related words and phrases

into preposition (DIVISION)



used when referring to the division of one number by another number:

- *What's 5 into 125?*

+ SMART Vocabulary: related words and phrases



into preposition (INTERESTED)



- *Jackie's really into classical music.*

+ SMART Vocabulary: related words and phrases

Grammar

In, into

In and into are prepositions. ...

In, into: position and direction

We use in to talk about where something is in relation to a larger area around it: ...

Into: enthusiasm, interest

We use be into to express enthusiasm or strong interest for something: ...

Change into, turn into

We use into after verbs describing change: ...

In: phrasal verbs


We use in to make a number of phrasal verbs: ...

(Definition of **into** from the [Cambridge Advanced Learner's Dictionary & Thesaurus](#) © Cambridge University Press)

into | INTERMEDIATE ENGLISH

into

preposition

US  /'ɪn·tu, -tə/

into *preposition* (INSIDE)

Add to word list 

toward the inside or middle of something and about to be contained, surrounded, or enclosed by it:

- *Pour some sugar into the bowl.*
- *They went into the backyard.*



connected with or involved in a condition or activity:

- *My father went into the army the day after the war began.*
- *An investigation into the accident is underway.*
- *I know I should do my taxes but I just don't want to get into it now.*



informal Into also means strongly interested in or involved with something:

- *Jeanne is heavily into music.*
- *Ken is into long-distance running.*

into preposition (CHANGE)



used to show when a person or thing is changing from one form or condition to another:

- *Peel the potatoes and chop them into small cubes.*
- *We made the extra bedroom into an office.*
- *Her novels have been translated into nineteen languages.*



into preposition (MOVEMENT)





- *The driver apparently fell asleep and his car slammed into a tree.*
- fig. *Guess who I ran into (= met unexpectedly) at the shopping mall!*

into preposition (DIVISION)



used when referring to the division of one number by another number:

- *5 into 10 is 2.*

(Definition of *into* from the Cambridge Academic Content Dictionary © Cambridge University Press)

What is the pronunciation of *into*? >

Translations of into

in Chinese (Traditional)

裡面, 進入 · 到...裡面, 變化...

See more

in Chinese (Simplified)

里面, 进入, 到...里面, 变化...

See more

in Spanish

en, contra, a...

See more

in Portuguese

em, dentro de, para...

See more

in more languages



Need a translator?

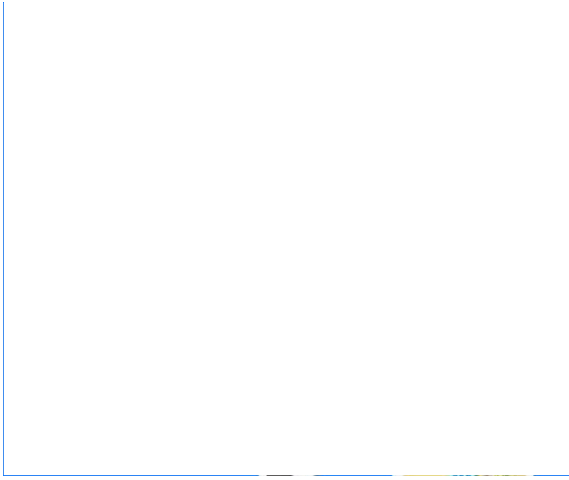
Get a quick, free translation!



Translator tool

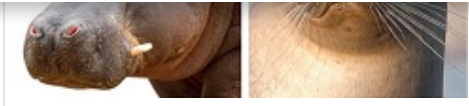


- intimidating
- intimidatingly
- intimidation
- intimidatory
- into**
- into leaf *phrase*
- into the bargain *idiom*
- into thin air *idiom*
- intolerable



Test your vocabulary with our fun image quizzes





Try a quiz now

More meanings of *into*

— All

[born into something](#)

[descent into something](#)

[dip into something](#)

[far into something](#)

[fit into something](#)

[lead into something](#)

[bump into someone/something](#)

[See all meanings](#)

Contents

To top 



WORD OF THE DAY

fig leaf

UK  /'fig ,li:f/ US  /'fig ,li:f/

something that hides something else, especially something that is dishonest or embarrassing

About this



BLOG

Ripped or puny? (Words meaning 'strong' and 'weak')

October 22, 2025

[Read More](#)



NEW WORDS

best friend dictionary

October 20, 2025

[More new words](#)













LEARN



DEVELOP



ABOUT





Where your world grows

© Cambridge University Press & Assessment 2025

