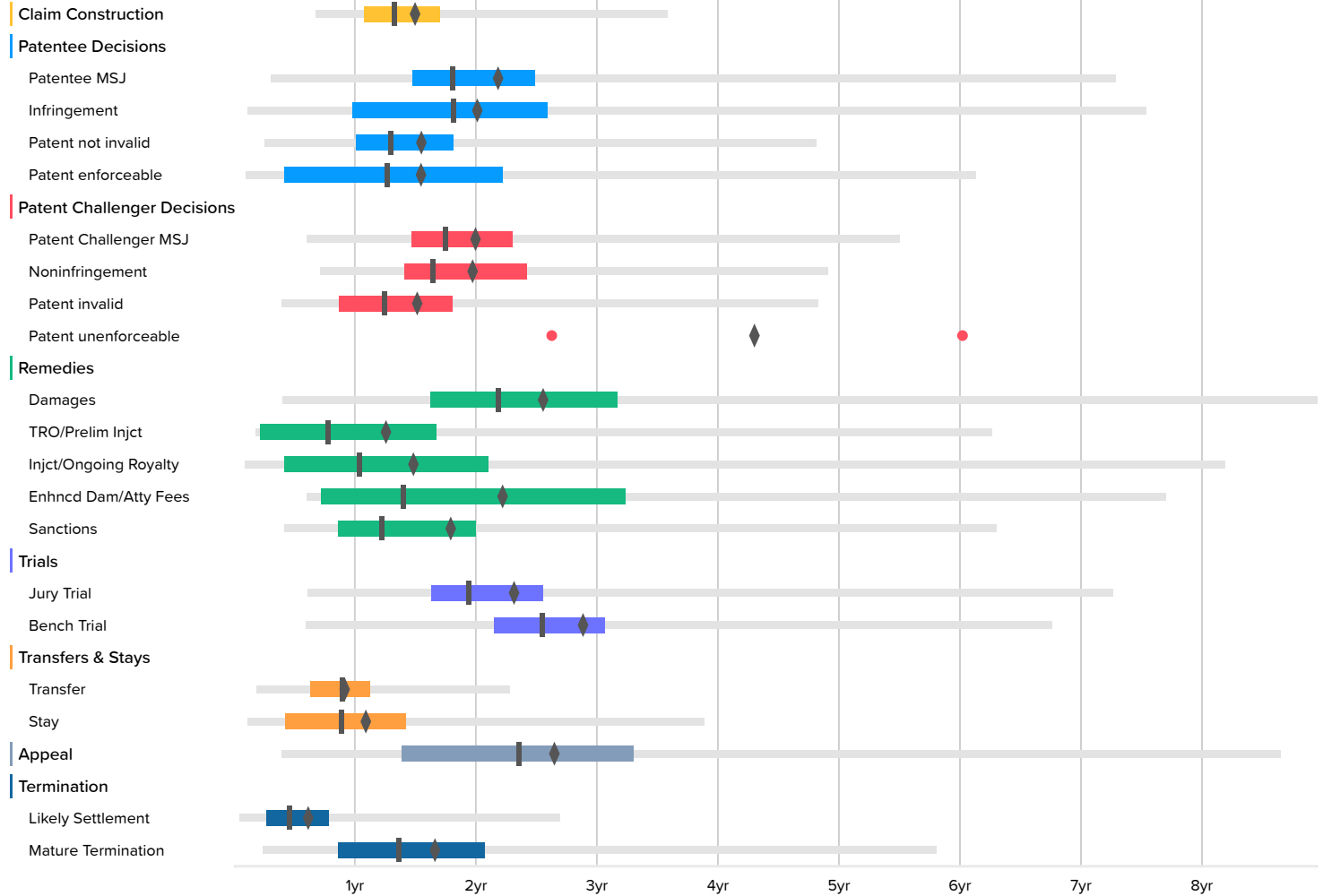


### Time to Milestones

VIEW IN BROWSER

Courts: Texas Eastern District Case Filing Date: On or After Jan. 1st, 2008

#### U.S. District Courts (14943 cases)



## U.S. District Courts

	Occurrences	Minimum	2nd Percentile	First Quartile	Median	Third Quartile	98th Percentile	Maximum	Average
Claim Construction	854		8.1	12.9	15.9	20.4	42.9	101.5	18.2
Patentee MSJ	135	1.2	3.7	17.7	21.6	29.8	87.2	102.4	26.4
Infringement	215		1.4	11.7	21.7	31.0	90.3	121.4	24.3
Patent not invalid	803		3.0	12.1	15.5	21.7	57.6	121.4	18.8
Patent enforceable	115	0.7	1.1	5.0	15.1	26.6	73.5	101.7	18.8
Patent Challenger MSJ	392	1.2	7.2	17.5	20.9	27.6	65.9	106.5	24.2
Noninfringement	357	-1.5	8.6	16.9	19.7	29.0	58.8	121.4	23.9
Patent invalid	409		4.7	10.3	14.9	21.7	57.9	106.3	18.4
Patent unenforceable	2	31.4			51.8			72.1	51.8
Damages	150	0.2	4.8	19.4	26.2	38.0	107.2	121.4	30.9
TRO/Prelim Injct	16	1.0	2.1	2.6	9.3	20.0	75.0	75.0	15.3
Injct/Ongoing Royalty	136	0.7	1.1	5.0	12.4	25.2	98.1	124.9	18.0
Enhncd Dam/Atty Fees	78	2.3	7.2	8.7	16.8	38.7	92.2	121.4	26.8
Sanctions	24	2.2	5.0	10.4	14.6	23.9	75.4	75.4	21.7
Jury Trial	176	3.2	7.3	19.5	23.2	30.6	87.0	148.4	28.0
Bench Trial	43	5.0	7.1	25.7	30.5	36.7	81.0	81.0	34.8
Transfer	936		2.3	7.6	10.7	13.4	27.3	44.2	11.2
Stay	1430	0.0	1.3	5.0	10.6	17.0	46.6	109.2	13.3
Appeal	281	0.8	4.7	16.6	28.2	39.5	103.6	168.0	32.0
Likely Settlement	10958		0.6	3.2	5.4	9.4	32.3	107.0	7.6
Mature Termination	2903		2.9	10.3	16.3	24.8	69.5	197.7	20.1