



US011050654B2

(12) **United States Patent**
Dagum et al.

(10) **Patent No.:** **US 11,050,654 B2**
(45) **Date of Patent:** **Jun. 29, 2021**

(54) **METHOD AND SYSTEM FOR USING A DOWNLOADABLE AGENT FOR A COMMUNICATION SYSTEM, DEVICE, OR LINK**

(71) Applicants: **ADAPTIVE SPECTRUM AND SIGNAL ALIGNMENT, INC.**, Redwood City, CA (US); **Leonardo Dagum**, Redwood City, CA (US); **Philip Bednarz**, Palo Alto, CA (US); **Marc Goldburg**, Redwood City, CA (US); **Ardavan Maleki Tehrani**, Menlo Park, CA (US); **Wonjong Rhee**, San Francisco, CA (US)

(72) Inventors: **Leonardo Dagum**, Redwood City, CA (US); **Philip Bednarz**, Palo Alto, CA (US); **Marc Goldburg**, Redwood City, CA (US); **Ardavan Maleki Tehrani**, Menlo Park, CA (US); **Wonjong Rhee**, San Francisco, CA (US)

(73) Assignee: **ASSIA SPE, LLC**, Wilmington, DE (US)

(*) Notice: Subject to any disclaimer, the term of this patent is extended or adjusted under 35 U.S.C. 154(b) by 479 days.

(21) Appl. No.: **14/414,436**

(22) PCT Filed: **Sep. 25, 2012**

(86) PCT No.: **PCT/US2012/057152**

§ 371 (c)(1),

(2) Date: **Jan. 12, 2015**

(87) PCT Pub. No.: **WO2014/011200**

PCT Pub. Date: **Jan. 16, 2014**

(65) **Prior Publication Data**

US 2015/0207720 A1 Jul. 23, 2015

Related U.S. Application Data

(60) Provisional application No. 61/671,672, filed on Jul. 13, 2012.

(51) **Int. Cl.**
H04L 12/26 (2006.01)
H04L 12/24 (2006.01)
(Continued)

(52) **U.S. Cl.**
CPC **H04L 43/50** (2013.01); **H04L 12/407** (2013.01); **H04L 41/048** (2013.01); **H04L 41/26** (2013.01);
(Continued)

(58) **Field of Classification Search**
CPC **H04L 43/50**; **H04L 12/407**; **H04L 41/048**; **H04L 41/26**; **H04L 41/32**; **H04L 43/04**;
(Continued)

(56) **References Cited**

U.S. PATENT DOCUMENTS

2002/0174421 A1 11/2002 Zhao et al.
2004/0044761 A1* 3/2004 Phillipi H04L 29/06 709/223

(Continued)

FOREIGN PATENT DOCUMENTS

WO 2012091725 A 7/2012
WO WO-2012/091725 7/2012

OTHER PUBLICATIONS

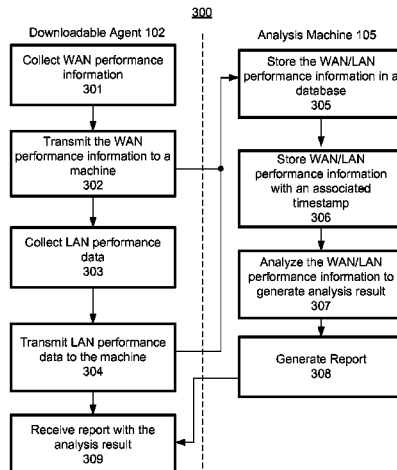
International Search Report and Written Opinion for International Patent Application No. PCT/US2012/057152, dated Mar. 5, 2013.
(Continued)

Primary Examiner — Michael J Moore, Jr.

(74) *Attorney, Agent, or Firm* — North Weber and Baugh LLP; Michael North

(57) **ABSTRACT**

Described is a method performed by a downloadable agent, the method comprising: collecting WAN performance information;
(Continued)



mation, wherein the downloadable agent is executable on a computing device coupled to a LAN of a broadband subscriber, wherein the LAN is coupled by another device to a WAN; and transmitting the WAN performance information to a machine; wherein the machine is operable to: store and analyze the performance information to generate an analysis result; and report the analysis result to at least one of the broadband subscriber and its service provider. Described is a corresponding system which comprises a database; and a server coupled to the database, the server operable to: receive WAN performance information from a downloadable agent; store the information in the database, analyze the information to generate an analysis result; and report the analysis result to at least one of the broadband subscriber and the broadband subscriber's service provider.

36 Claims, 11 Drawing Sheets

- (51) **Int. Cl.**
H04L 12/407 (2006.01)
H04L 29/08 (2006.01)
- (52) **U.S. Cl.**
 CPC *H04L 41/32* (2013.01); *H04L 43/04* (2013.01); *H04L 43/0829* (2013.01); *H04L 43/0852* (2013.01); *H04L 43/0888* (2013.01); *H04L 43/14* (2013.01); *H04L 41/0681* (2013.01); *H04L 41/083* (2013.01); *H04L 41/0826* (2013.01); *H04L 41/0853* (2013.01); *H04L 41/12* (2013.01); *H04L 41/22* (2013.01); *H04L 41/5038* (2013.01); *H04L 43/087* (2013.01); *H04L 43/0817* (2013.01); *H04L 43/0882* (2013.01); *H04L 43/10* (2013.01); *H04L 43/16* (2013.01); *H04L 67/34* (2013.01); *Y04S 40/00* (2013.01)
- (58) **Field of Classification Search**
 CPC *H04L 43/0829*; *H04L 43/0852*; *H04L 43/0888*; *H04L 43/14*; *H04L 41/0681*; *H04L 41/0826*; *H04L 41/083*; *H04L 41/0853*; *H04L 41/12*; *H04L 41/22*; *H04L 41/5038*; *H04L 43/0817*; *H04L 43/087*; *H04L 43/0882*; *H04L 43/10*; *H04L 43/16*; *H04L 67/34*; *Y04S 40/00*
 See application file for complete search history.

(56) **References Cited**

U.S. PATENT DOCUMENTS

2005/0114500	A1 *	5/2005	Monk	H04L 12/2602 709/224
2006/0023638	A1 *	2/2006	Monaco	H04L 43/022 370/252
2008/0089347	A1 *	4/2008	Phillipi	H04L 41/083 370/400
2009/0207985	A1	8/2009	Cioffi et al.		
2012/0096143	A1	4/2012	Suit		

2012/0091724	A1	7/2012	Chow et al.		
2012/0244863	A1 *	9/2012	Burnette	H04W 28/24 455/436
2012/0257535	A1 *	10/2012	DeWath	H04L 43/10 370/253
2014/0047100	A1 *	2/2014	Lachapelle	G06F 11/3495 709/224

OTHER PUBLICATIONS

Office Action dated May 18, 2017, in Chinese Patent Application No. 201280075818.9 (38pgs).
 Office Action dated Aug. 12, 2016, in Korean Patent Application No. 10-2015-7002636 (26pgs).
 Response filed Mar. 8, 2017, in Korean Patent Application No. 10-2015-7002636 (55pgs).
 English translation of Office Action dated Feb. 9, 2018, in Chinese Patent Application No. 201280075818.9 (52pgs).
 Office Action dated Feb. 19, 2018, and English translation thereof, in Korean Patent Application No. 10-2018-7002557 (9pgs).
 Office Action dated Jan. 21, 2016, in Canadian Patent Application No. 2,879,047 (3pgs).
 Office Action dated Jul. 25, 2017, in Australian Patent Application No. 2016204716 (3pgs).
 Office Action dated Aug. 13, 2017, in Korean Patent Application No. 10- 2015-7002636 (6pgs).
 Examination Report dated Nov. 13, 2017, in Chinese Patent Application No. 12773454.9 (5pgs).
 Office Action dated Jan. 1, 2018, in Korean Patent Application No. 1020157002636 (8pgs).
 Response as filed Oct. 17, 2017, in Australian Patent Application No. 2016204716 (34pgs).
 Notice of Final Rejection, and English translation thereof, dated Jun. 21, 2018, in Korean Patent Application No. 1020187002557 (5pgs).
 Notice of Allowance, dated Jun. 20, 2018, in Canadian Patent Application No. 2,879,047 (1pg).
 Notice of Final Rejection, and English translation thereof, dated May 11, 2018, in Korean Patent Application No. 1020187002557 (5pgs).
 Response filed Jun. 12, 2018, in Korean Patent Application No. 1020187002557 (17pgs).
 Office Action dated Aug. 17, 2018, in Chinese Patent Application No. 201280075818.9 (52pgs).
 Notification of Re-Examination in the related Chinese Patent Application No. 201280075818.9, dated Feb. 27, 2019 (37pgs).
 Response to Notification of Re-Examination in the related Chinese Patent Application No. 201280075818.9, filed on Apr. 5, 2019 (3pgs).
 Examination Report in the related European Patent Application No. 12773454.9, dated Mar. 11, 2019 (4 pgs).
 Response to Examination Report in the related European Patent Application No. 12773454.9, dated Mar. 11, 2019, filed on May 22, 2019 (3 pgs).
 Examination Report in the related European Patent Application No. 12773454.9, dated Sep. 18, 2019 (6 pgs).
 Response to Examination Report in the related European Patent Application No. 12773454.9, dated Sep. 18, 2019, filed on Feb. 3, 2020 (4 pgs).
 Examination Report in the related European Patent Application No. 12773454.9, dated Jul. 1, 2020 (6 pgs).
 EP Examination Report dated Mar. 10, 2021 in related European Application No. 12773454.9, (6 pgs).

* cited by examiner

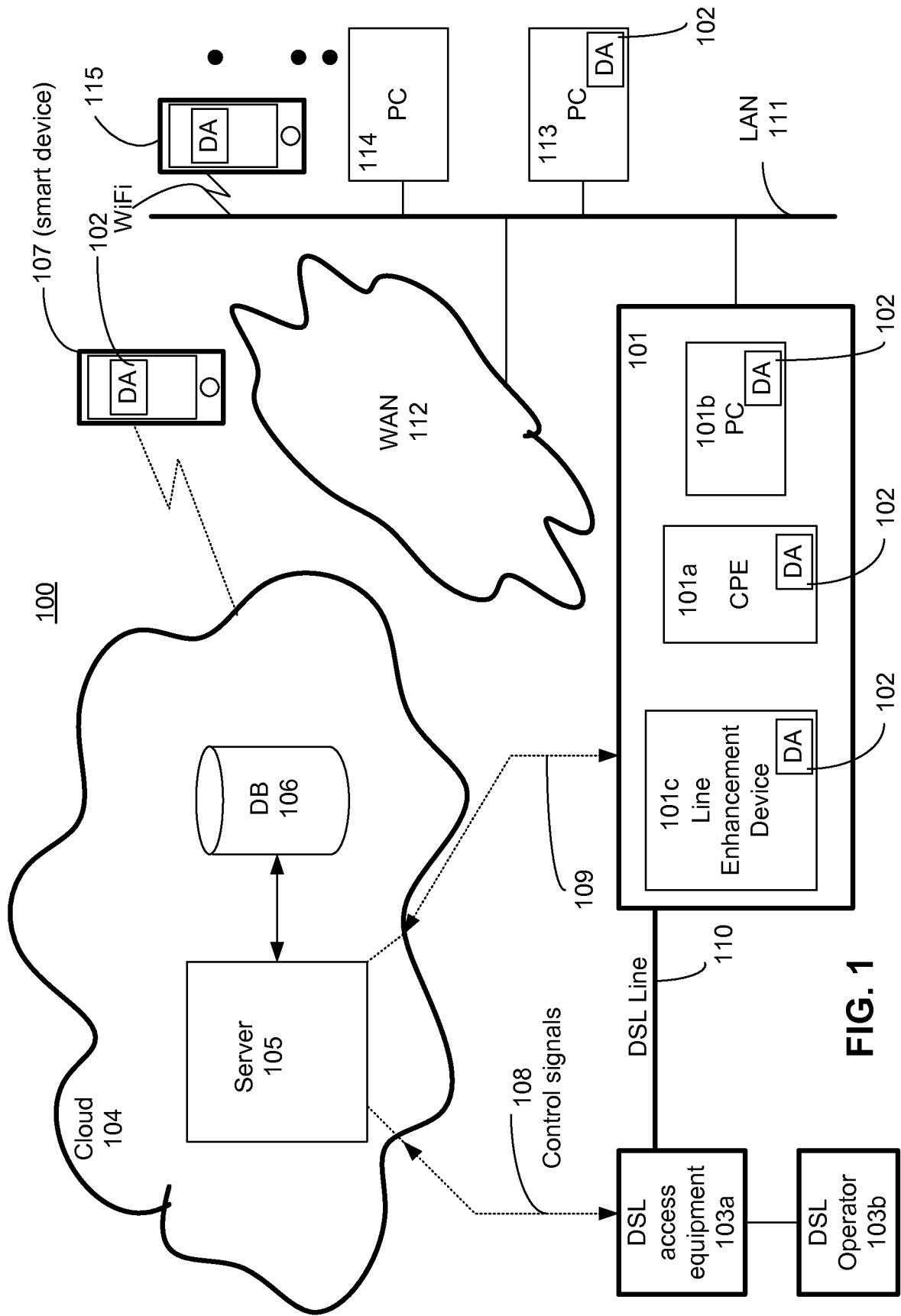


FIG. 1

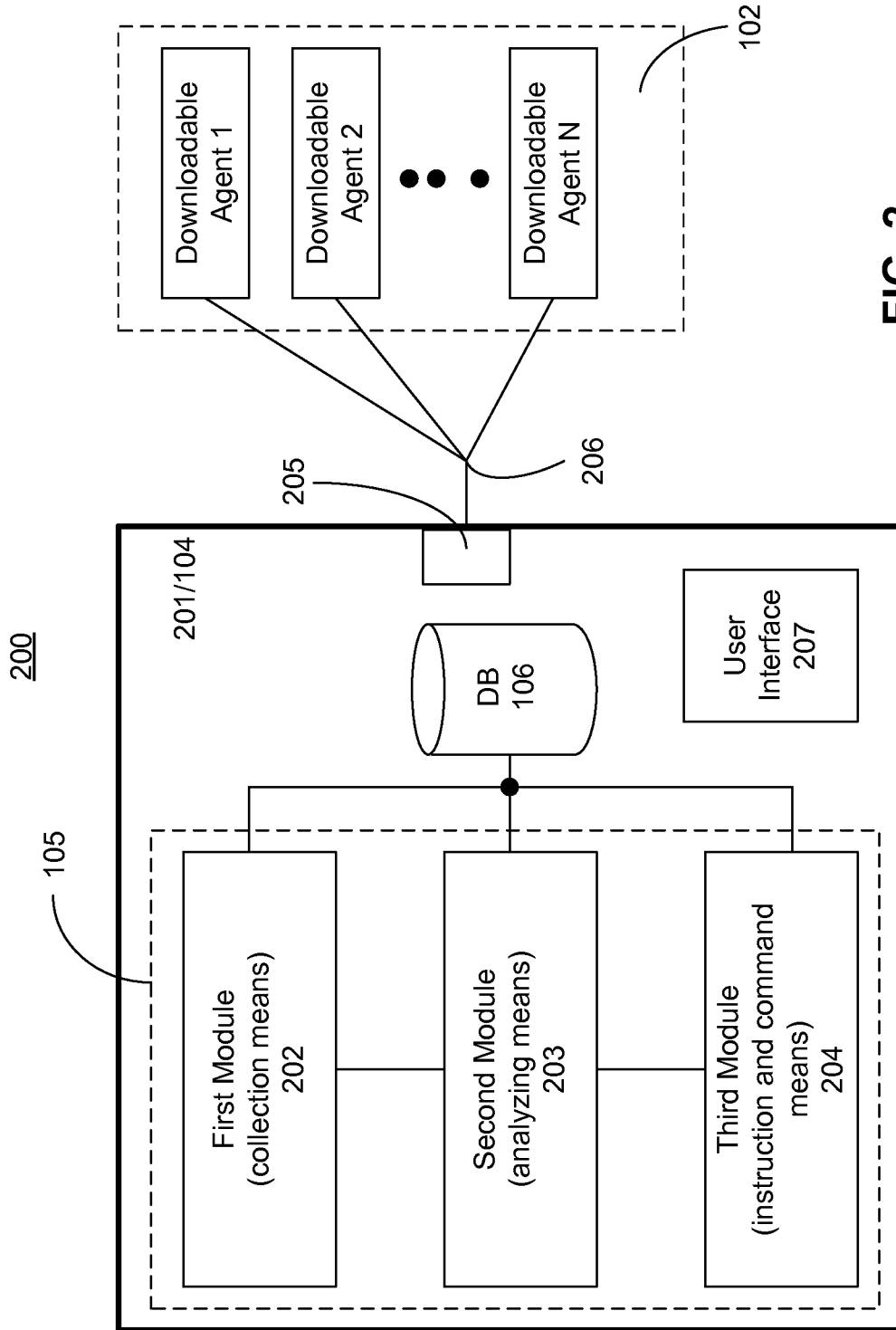


FIG. 2

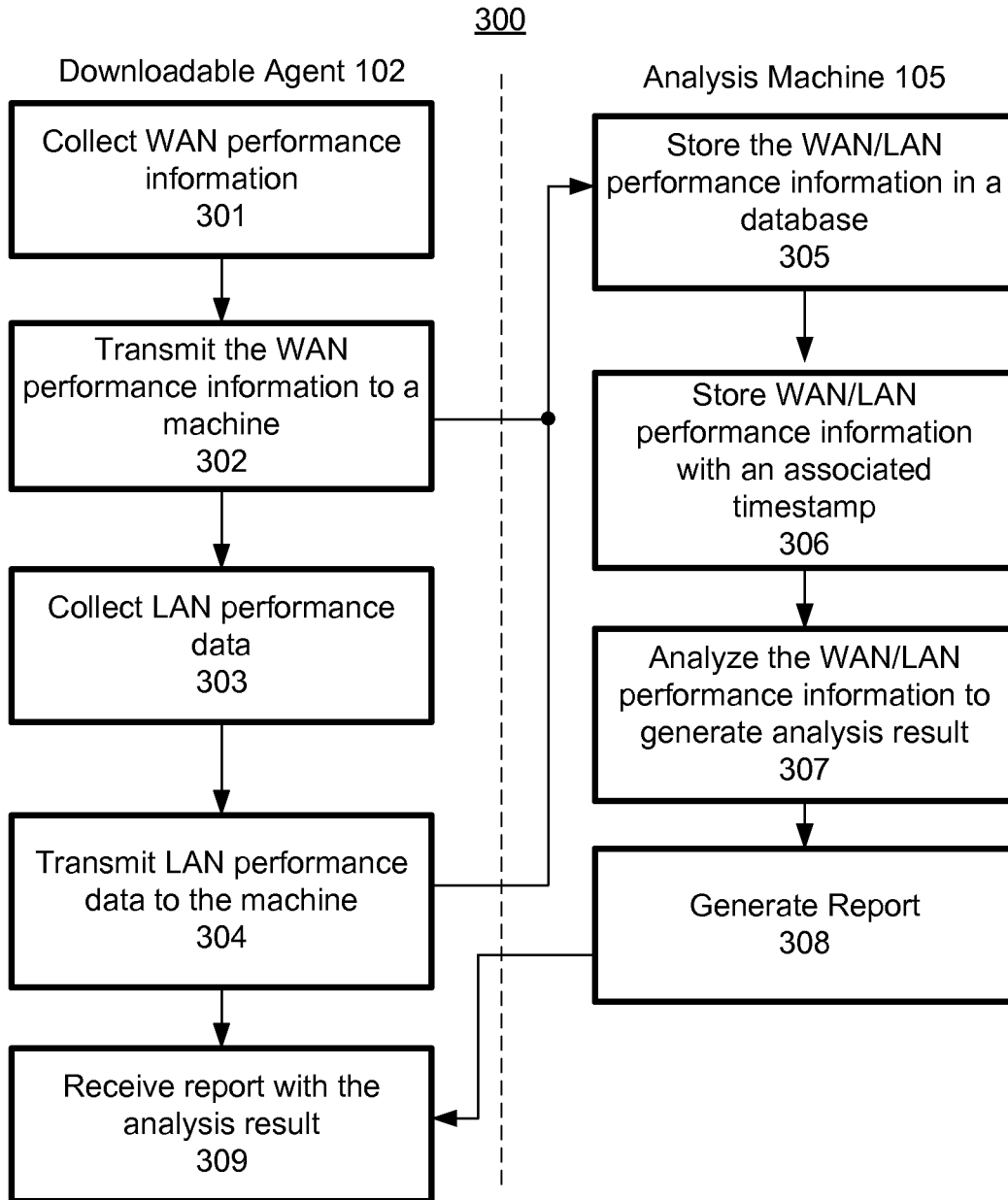


FIG. 3

400

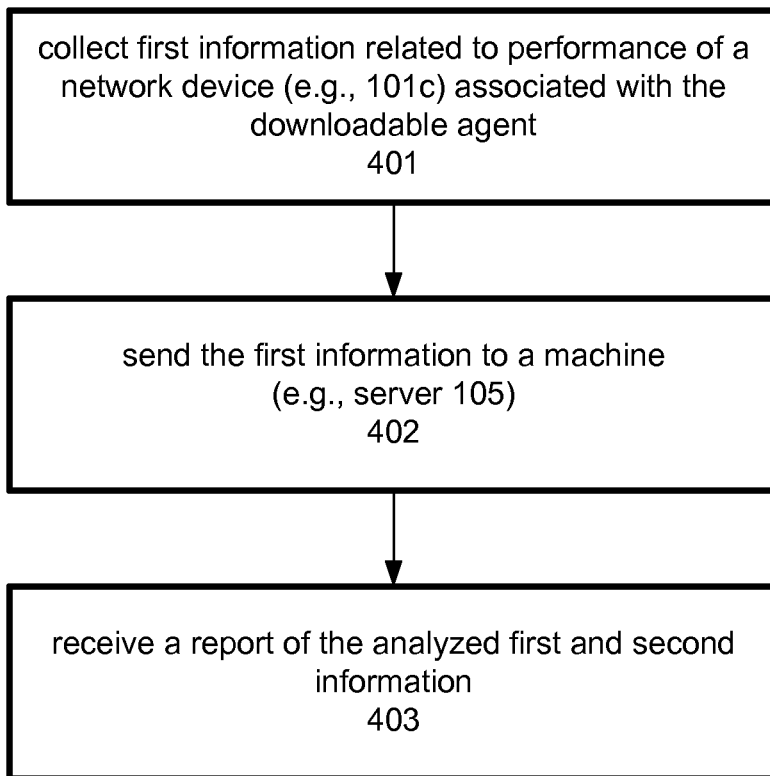


FIG. 4A

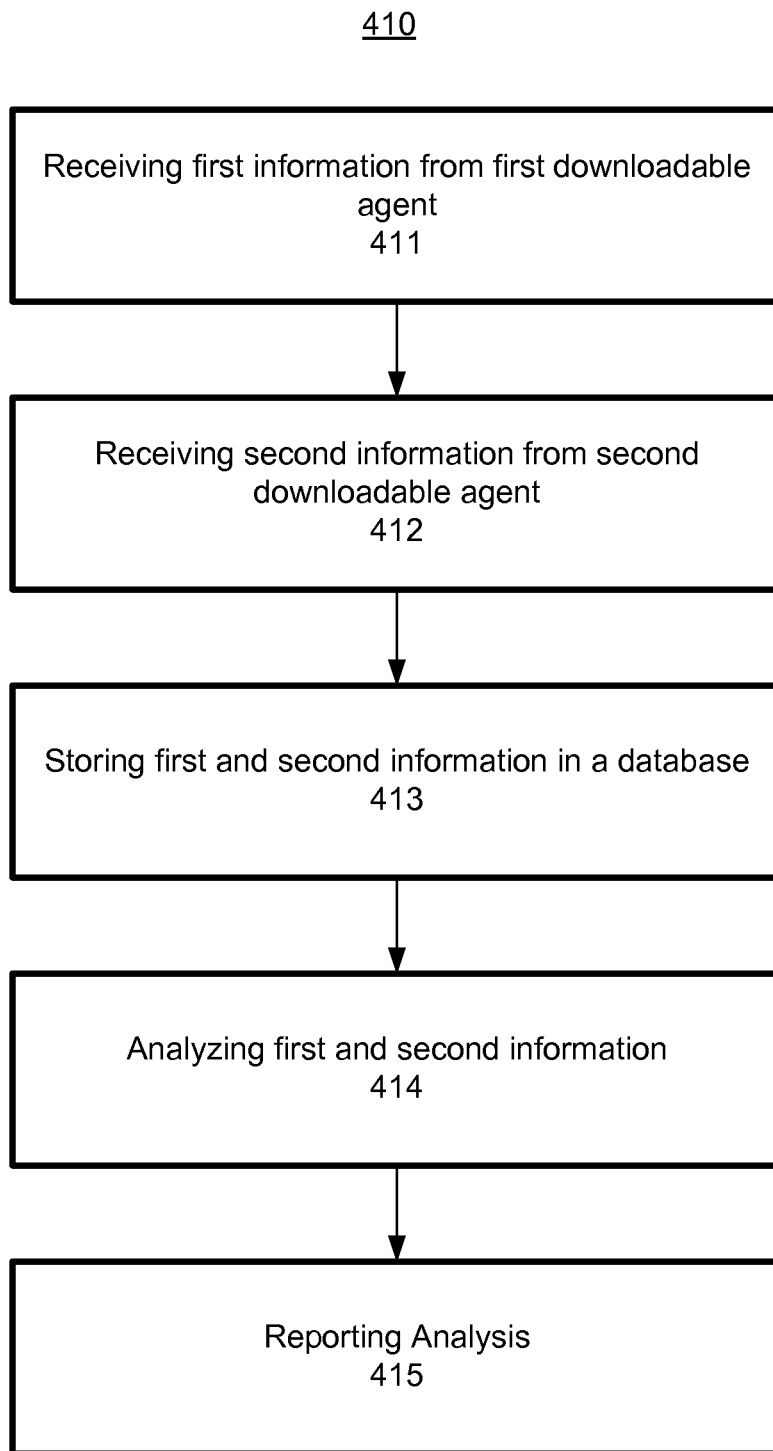


FIG. 4B

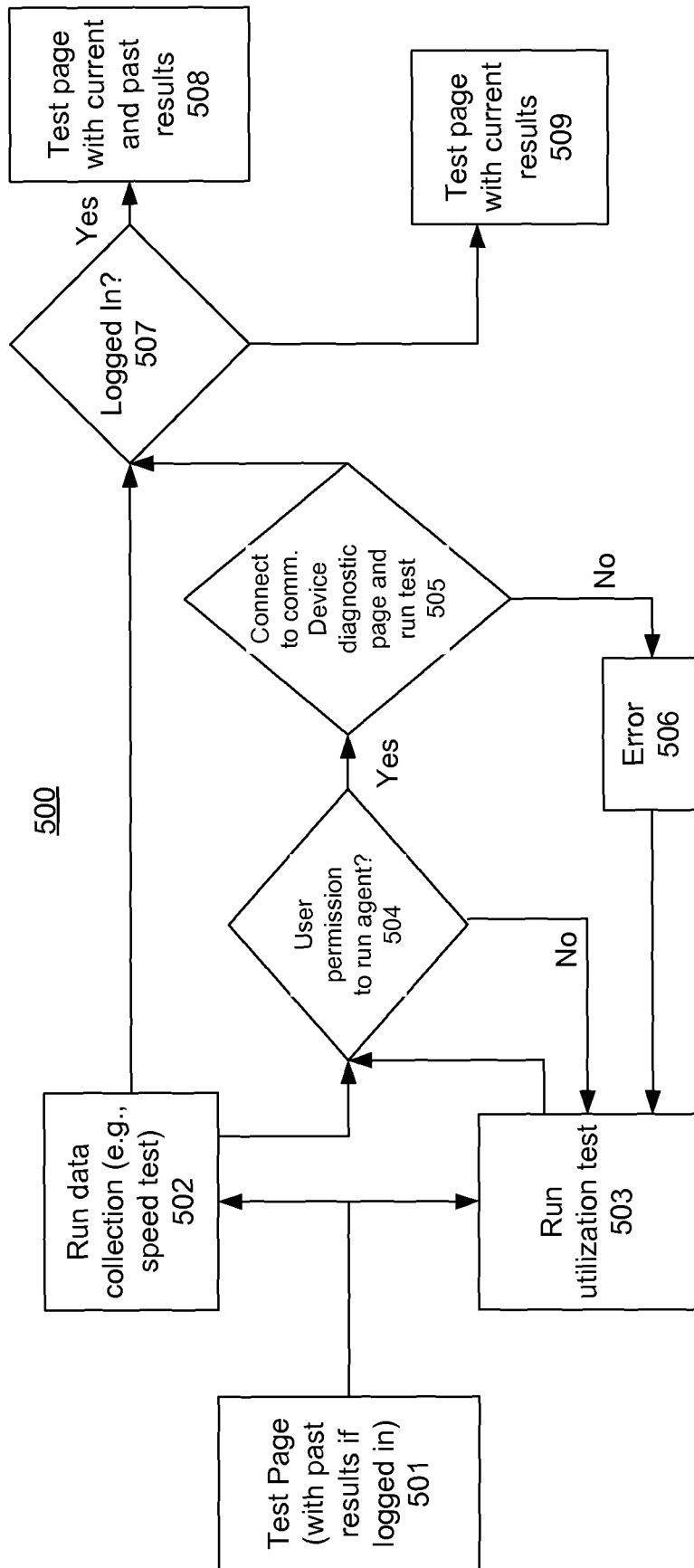


FIG. 5A

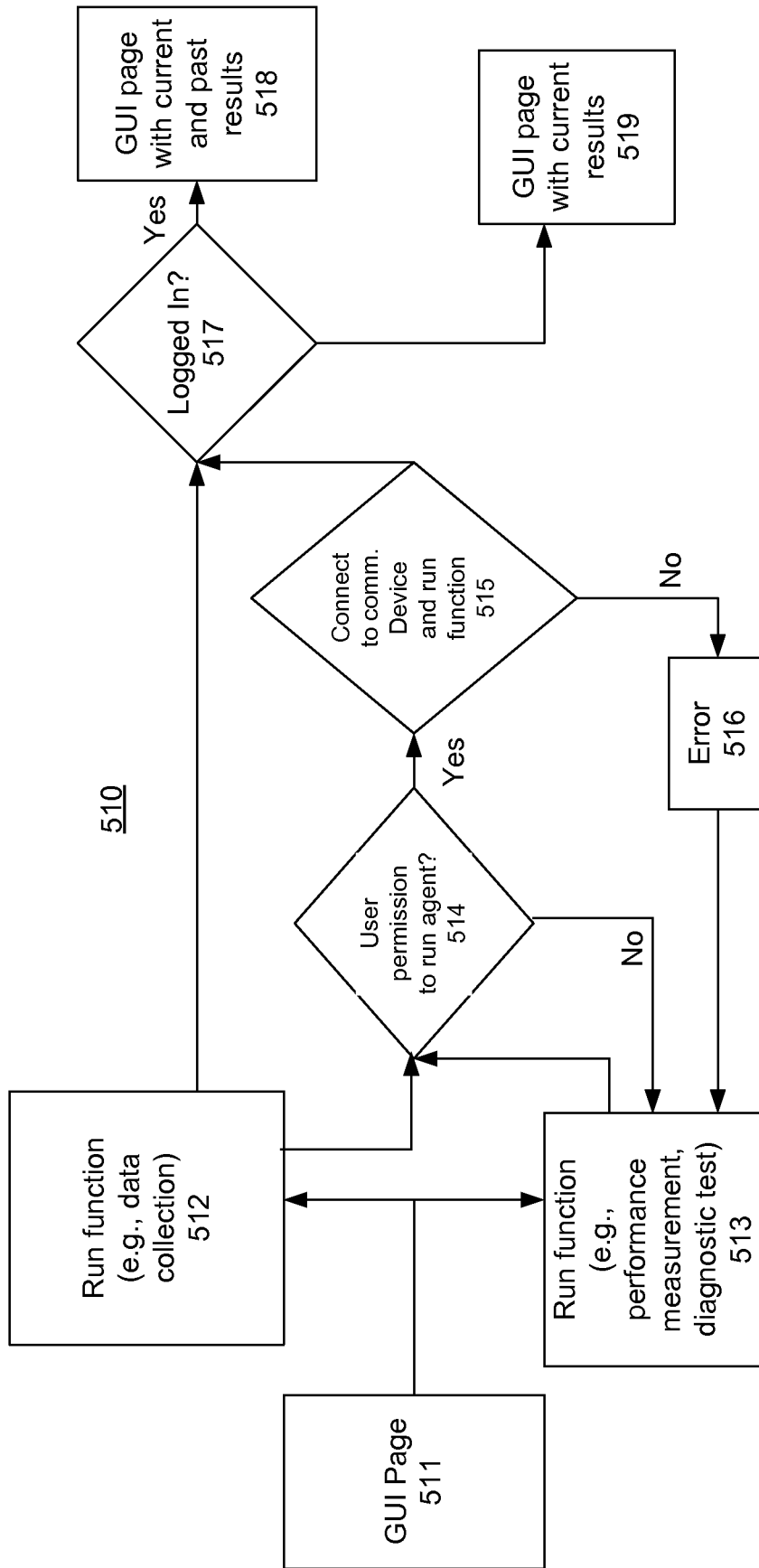


FIG. 5B

600



FIG. 6A

620

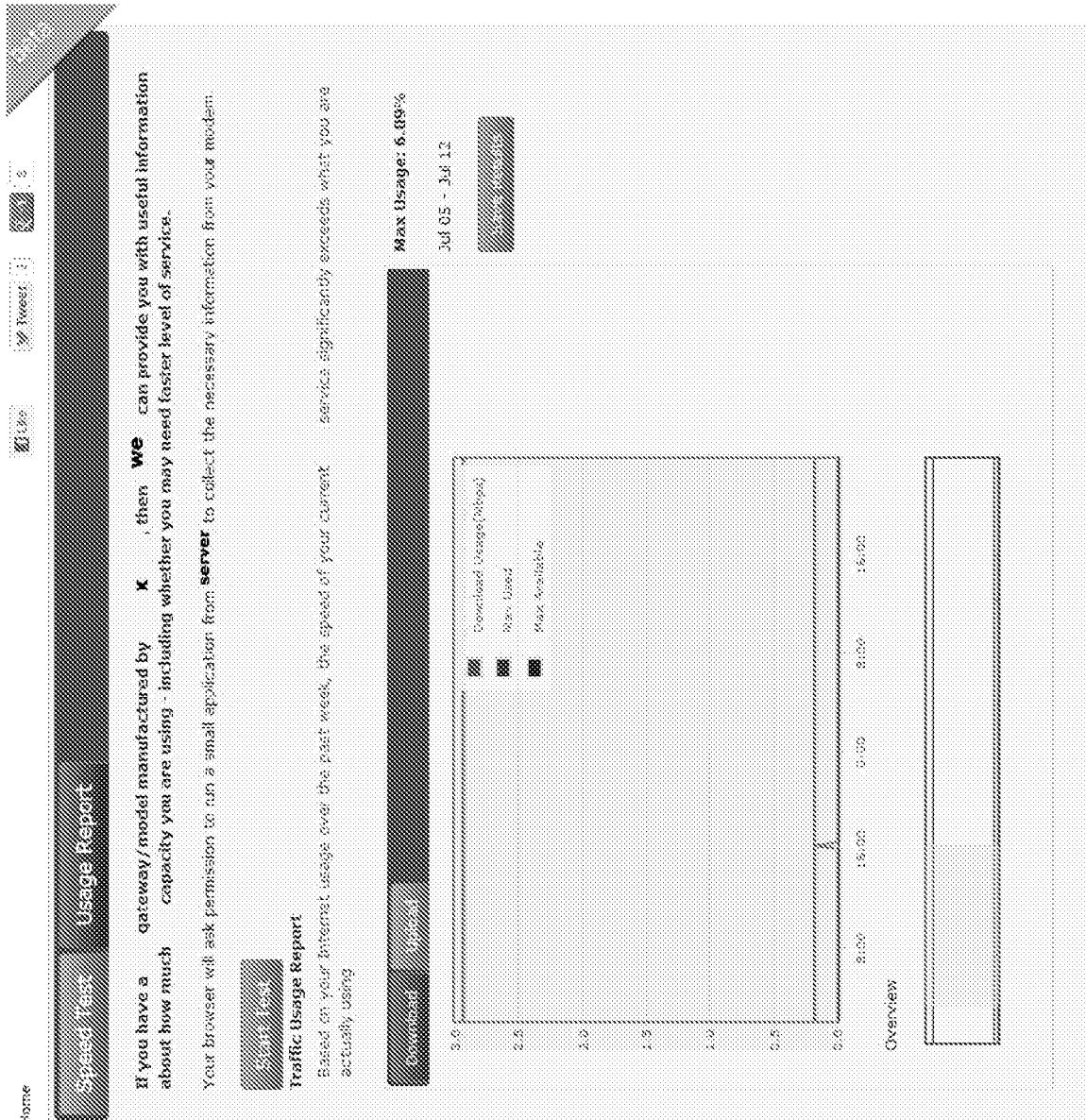


FIG. 6B

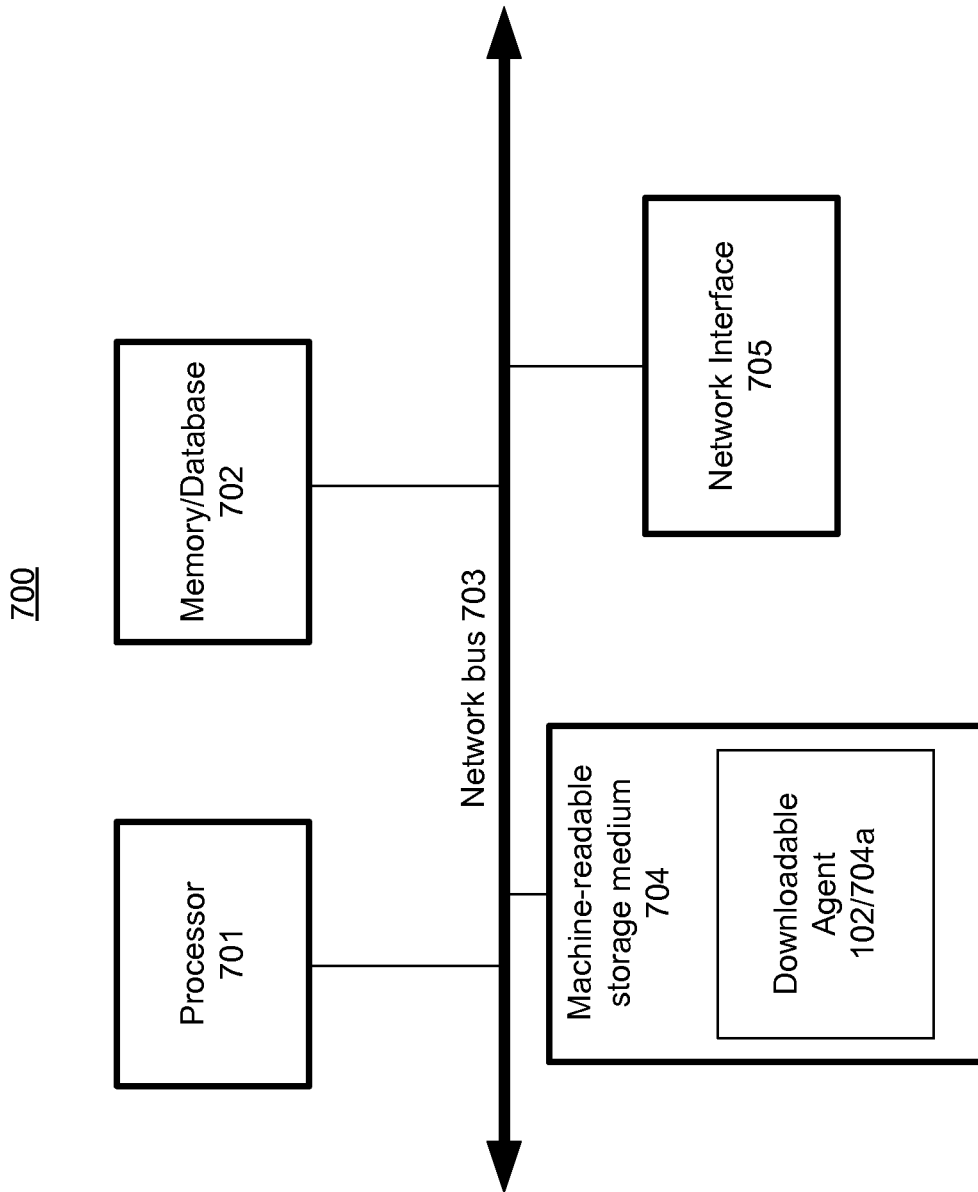


FIG. 7

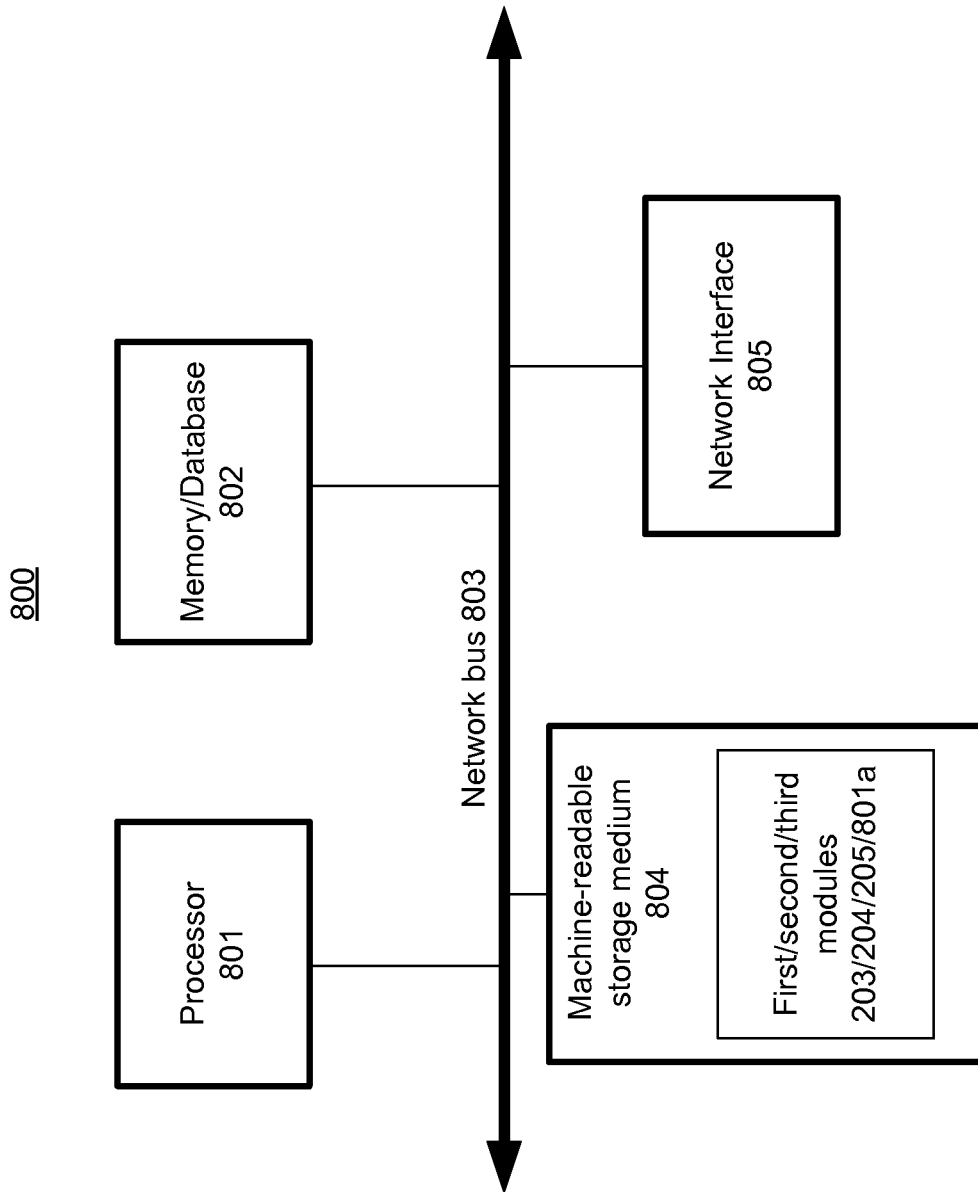


FIG. 8

1

**METHOD AND SYSTEM FOR USING A
DOWNLOADABLE AGENT FOR A
COMMUNICATION SYSTEM, DEVICE, OR
LINK**

CROSS-REFERENCE TO RELATED
APPLICATIONS

This application is the U.S. National Phase of International Application No. PCT/US2012/057152, filed Sep. 25, 2012, and claims the benefit of U.S. Provisional Application No. 61/671,672, filed Jul. 13, 2012, the disclosures of both of which are incorporated herein by reference in their entirety for all purposes.

CLAIM OF PRIORITY

This application claims priority to, and incorporates by reference in its entirety, U.S. Provisional Application No. 61/671,672 filed Jul. 13, 2012, and entitled "METHOD AND SYSTEM FOR USING A DOWNLOADABLE AGENT FOR A COMMUNICATION SYSTEM, DEVICE, OR LINK."

BACKGROUND

In current practice, Wide Area Network (WAN) and/or Local Area Network (LAN) performance information is not centrally analyzed by a communication device coupled to such networks to account for information such as topological information, geographical information, user's network usage pattern, quality of network connection, time, throughput, etc. Accordingly, communication devices coupled to such networks may operate with lower performance than otherwise possible because the communication devices have no means for knowing performance data that can be used to intelligently assess and manage performance of the communication device and/or network connection. An example of a communication device is a smart phone, computer, a router, etc.

BRIEF DESCRIPTION OF THE DRAWINGS

Embodiments of the disclosure will be understood more fully from the detailed description given below and from the accompanying drawings of various embodiments of the disclosure, which, however, should not be taken to limit the disclosure to the specific embodiments, but are for explanation and understanding only.

FIG. 1 is a communication network with some or all communication devices having a downloadable agent to assist with performance analysis, according to one embodiment of the disclosure.

FIG. 2 is a system with a server (or the analysis machine) operable to communicate with one or more downloadable agents, according to one embodiment of the disclosure.

FIG. 3 is a flowchart of a method performed by the downloadable agent and an analysis machine of the communication network, according to one embodiment of the disclosure.

FIG. 4A is a flowchart of a method performed by the downloadable agent, according to another embodiment of the disclosure.

FIG. 4B is a flowchart of a method performed by the server (or analysis machine), according to one embodiment of the disclosure.

2

FIG. 5A is flowchart of a method for performing a diagnostic test, according to one embodiment of the disclosure.

FIG. 5B is flowchart of a method for running (i.e., executing) functions, according to another embodiment of the disclosure.

FIG. 6A is an exemplary report provided by the server based on the information received from the downloadable agent, according to one embodiment of the disclosure.

FIG. 6B is another exemplary report provided by the server based on the information received from the downloadable agent, according to one embodiment of the disclosure.

FIG. 7 is a processor-based system having machine-readable storage medium with computer executable instructions of a downloadable agent, according to one embodiment of the disclosure.

FIG. 8 is a processor-based system having machine-readable storage medium with computer executable instructions executed by the server, according to one embodiment of the disclosure.

DETAILED DESCRIPTION

One of the problems with current communication systems is that information about the communication device and communication device performance inside the local area network (LAN) is generally available to other devices on the LAN, however not available to machines outside the LAN; i.e., the wide area network (WAN), or the cloud. In order to overcome this and other problems, the embodiments of this disclosure describe an agent (also called downloadable agent herein) which is placed inside the LAN, where the agent collects data on behalf of the cloud or WAN-based server and then transfers that data to the cloud or WAN-based server for analysis. Such an embodiment allows collection of information on all devices centrally for a comprehensive analysis.

The embodiments herein describe a method performed by a downloadable agent for collecting information associated with a communication device and then sending the collected information to another machine for analysis. In one embodiment, other interfaces of the communication device may be used in conjunction or independent of the downloadable agent to collect information associated with the communication device and then to send that collected information to another machine for analysis.

In one embodiment, the other machine is a server in a cloud which has access to information related to many communication devices and can use that information to generate a performance report for the communication device. In one embodiment, the server in the cloud does not have access to information of the communication devices in the absence of the downloadable agents. The downloadable agent, that may be downloaded on a user's browser or installed on the communication device, provides the server access to the information associated with the communication device. In one embodiment, the downloadable agent receives the report. In one embodiment, the report can be used to enhance the performance of the communication device. In one embodiment, the method comprises: collecting wide area network (WAN) performance information, wherein the downloadable agent is executable on a computing device coupled to a (local area network) LAN of a broadband subscriber, wherein the LAN is coupled by another device to a WAN; and transmitting the WAN performance information to a machine. In one embodiment, the

downloadable agent may be executable on a variety of different computer platforms and operating systems.

The term “Local Area Network” (LAN) herein generally refers to a computer or communication network that interconnects computers or communication devices in a limited area such as a home, school, computer laboratory, or office building using network media.

The term “Wide Area Network” (WAN) herein generally refers to a telecommunication network that covers a broad area (i.e., any network that links across metropolitan, regional, or national boundaries) compared to the limited area covered by a LAN.

In one embodiment, the machine (e.g., a server in a cloud) is operable to: store the WAN performance information in a database associated with the machine, analyze the WAN performance information to generate an analysis result; and report the analysis result to at least one of the broadband subscriber and the broadband subscriber’s service provider. In one embodiment, the broadband subscriber and/or the broadband subscriber’s service provider analyses the report and adjusts various performance parameters associated with the communication device or the networking devices with which it communicates to enhance the performance of the communication.

The term “performance” herein refers generally to network throughput (e.g., TCP/UDP), latency, jitter, connectivity, error rates, power consumption, transmit power, etc. Improving performance of the communication system includes increasing throughput, reducing error rate and latency, improving (i.e., reducing) jitter, reducing power consumption, etc. for the communicating system. The term “TCP” stands for Transmission Control Protocol. The term “UDP” refers to User Datagram Protocol. The term “successful” herein refers to an indication suggesting safe receipt of a packet that is often confirmed by ACK (acknowledge) message packet. In another embodiment, operational data such as error counts, retransmission counts, modulation, signal strength, etc. are used to estimate the performance and throughput of the communications link.

The embodiments herein allow a user of a communication device to install (download) an agent on their communication device, for example, personal computer, tablet computer, laptop, network gateway, smart phone, smart device, computer, DSL (Digital Subscriber Line) access equipment, router, etc) so that the communication device is able to collect performance related information for analysis by another machine (e.g., a server on a cloud) and then receive at least one of several statistical and commercial analyses including throughput and other measures of communications performance; availability of higher bandwidth for operating a communication device/link (e.g., DSL) service; purchase information (or service product information) for improving communication device/link (e.g., DSL) service performance; or utilization information for optimizing a consumers’ communication device/link (e.g., DSL) service cost. Such downloadable agent allows for customized enhancement of user experience with a communication device by enhancing the communication device’s or link’s performance.

In the following description, numerous details are discussed to provide a more thorough explanation of embodiments of the present disclosure. It will be apparent, however, to one skilled in the art, that embodiments of the present disclosure may be practiced without these specific details. In other instances, well-known structures and devices are shown in block diagram form, rather than in detail, in order to avoid obscuring embodiments of the present disclosure.

Note that in the corresponding drawings of the embodiments, signals are represented with lines. Some lines may be thicker, to indicate more constituent signal paths, and/or have arrows at one or more ends, to indicate primary information flow direction. Such indications are not intended to be limiting. Rather, the lines are used in connection with one or more exemplary embodiments to facilitate easier understanding of a circuit or a logical unit. Any represented signal, as dictated by design needs or preferences, may actually comprise one or more signals that may travel in either direction and may be implemented with any suitable type of signal scheme.

In the following description and claims, the term “coupled” and its derivatives may be used. The term “coupled” herein refers to two or more elements which are in direct contact (physically, electrically, magnetically, electromagnetically, optically, etc.). The term “coupled” herein may also refer to two or more elements that are not in direct contact with each other, but still cooperate or interact with each other.

As used herein, unless otherwise specified the use of the ordinal adjectives “first,” “second,” and “third,” etc., to describe a common object, merely indicate that different instances of like objects are being referred to, and are not intended to imply that the objects so described must be in a given sequence, either temporally, spatially, in ranking or in any other manner.

FIG. 1 is a communication network **100** with some or all communication devices having a respective downloadable agent (DA) to assist with performance analysis, according to one embodiment of the disclosure. In one embodiment, the communication network **100** comprises a local network **101** (e.g., a network at home) having Customer Premises Equipment (CPE) **101a** and a personal computer (PC) **101b**. In one embodiment, the local area network (LAN) **101** optionally comprises a line enhancement device **101c** which is any device coupled to the DSL **110** that improves the quality or performance on the DSL **110**. In one embodiment, the line enhancement device **101c** is a standalone device. In another embodiment, the line enhancement device **101c** is integrated with the CPE **101a**. In one embodiment, one or more devices of the LAN (e.g., home LAN) **101** are operable to communicate with the server **105** via the Internet **109** (via wired or wireless connections).

In one embodiment, the communication network **100** comprises a server **105** coupled to a database **106**, wherein the server and/or the database **106** reside in a cloud **104**.

The term “cloud” herein refers generally to cloud computing which is the delivery of computing and storage capacity as a service to a community of end-recipients. The term “cloud” is indicated with use of a cloud-shaped symbol **104** as an abstraction for the complex infrastructure it contains in system diagrams. Cloud computing entrusts services with a user’s data, software and computation over a network. In one embodiment, the server **105** resides in the cloud **104** and is operable to perform complex analysis (e.g., statistical) based on information collected from other communication devices via the Internet.

In one embodiment, the communication network **100** comprises a DSL access equipment **103a** (also called a DSL access network, or DSL node) which is operable to communicate with the CPE **101a** via a DSL line **110**. In one embodiment, the DSL access equipment **103a** comprises a DSLAM (digital subscriber line access multiplexer). In one embodiment, the DSL access equipment **103a** comprises a CO (central office). In one embodiment, the DSL access equipment **103a** receives control signals **108** from the server

105 that instruct a DSL operator **103b** about ways to improve performance of its customers e.g., CPE **101a**, etc.

In one embodiment, the control signals **108** include at least one or more of signals or commands related to: power, for example, transmit power, spectrum control, for example, Power Spectral Density (PSD) mask, margin, data rate, latency/delay, coding, for example, Forward Error Correction (FEC) coding.

In one embodiment, the server **105** is operable to access external communication devices (external to the cloud **104**) through cloud-based applications via a web browser or mobile application. In the embodiments discussed herein the downloadable agent (DA) **102** is operable to communicate with the resources (e.g., server **105**, database **106**) of the cloud **104**. In one embodiment, the DA **102** may be downloaded from any platform e.g., a disk, memory stick, web browser, web server, etc. In one embodiment, the DA **102** associated with a communication device executes on an Internet browser (e.g., Safari®, Netscape®, FireFox®, Internet Explorer®, etc). In one embodiment, the DA **102** associated with the communication device is accessible remotely via the Internet.

In one embodiment, the DA **102** is operable to execute on multiple computing platforms with different operating systems. For example, the DA **102** may operate on operating systems including Android, Berkley Software Distribution (BSD), iOS, GNU/Linux, Apple Mac OS X, Microsoft Windows, Windows Phone, and IBM z/OS. In one embodiment, the DA **102** is operable to execute in a virtual machine (VM). A VM is a software implementation of a machine (e.g., a computer) that executes programs like a physical machine. Examples of virtual machines include a Java Virtual Machine and the previously mentioned operating systems executing in VMWare, Virtual Box or the like. In one embodiment, the DA **102** may receive automatic updates to keep the application up to date with the latest features. In one embodiment, the downloadable agent is dynamically downloaded to the computing device.

The term “dynamically” herein refers to the downloading of an agent by the computing device on-demand and prior to use of the agent. A dynamically downloaded agent may be deleted from the computing device following the use of that agent.

In one embodiment, the communication network **100** comprises a wireless device, for example, a smart device (e.g., smart phone, tablet, etc) with a DA **102**. In one embodiment, the DA **102** is operable to review an analysis report generated by the server **105** for any of the communicating devices it has authorization to access.

In one embodiment, the server **105** is operable to receive WAN performance information from a DA **102**, wherein the DA **102** is executable on a computing device (e.g., **101a-b**, **107**, **113**) coupled to a LAN **111** of a broadband subscriber, wherein the LAN **111** is coupled by another device to a WAN **112**. In one embodiment, a DSL modem and a home gateway couple the LAN **111** to the WAN **112**. In one embodiment, the DSL modem and home gateway are integrated into a single enclosure.

In one embodiment, the DA **102** associated with the communication device collects data locally within the communication device and then periodically sends the collected data to the server **105**. In one embodiment, the DA **102** may wait for certain conditions or thresholds to be met before sending all collected data to the server **105**.

In one embodiment, the conditions and/or thresholds are related to a function of the type of data collected. For example, collected data may include at least one of: topo-

logical information, geographical information, time, throughput, latency, jitter, packet loss, type of communication device, device network identification, manufacturer and model of equipment, equipment characteristics, firmware, user’s network usage pattern, RF characteristics including at least one of: signal power, frequency bands and mode of operation, environment statistics, or data on operation of communication devices.

In one embodiment, the conditions are limits or thresholds on a performance level related to collected data. In one embodiment, a condition is an upper limit on jitter, or a lower limit on throughput. For example, if throughput drops below a lower limit/threshold, then the DA **102** may report and send the data to the server **105**. In another example, if packet loss exceeds an upper limit, then the DA **102** may report and send the data to the server. In one embodiment, a condition is time expiration on a scheduled collection. For example, the DA **102** may send data to the server **105** after a pre-defined time is expired.

In another embodiment, server **105** collects information from the DA’s, through server initiated communication. In one embodiment, server **105** collects information by polling or scheduled based system. One such example of polling is ping. In one embodiment, the server **105** may send a signal to a DA **102**, or ping a DA **102**, or communicate with a DA **102** on scheduled basis, after which the DA **102** sends collected information to the server **105**.

In one embodiment, the computing device is one of: computer, personal computer, laptop/desktop, smart phone, tablet computing device; an access point (AP); a base station; a wireless smart phone device; a wireless LAN device; an access gateway; a router, a performance enhancement device; a Digital Subscriber Line (DSL) Customer Premises Equipment (CPE) modem; a cable CPE modem; an in-home powerline device; a Home Phoneline Network Alliance (HPNA) based device; an in-home coax distribution device; a G.hn (Global Home Networking Standard) compatible device; an in-home metering communication device; an in-home appliance communicatively interfaced with the LAN; a wireless femtocell base station; a wireless Wi-Fi compatible base station; a wireless mobile device repeater; a wireless mobile device base station; nodes within an ad-hoc/mesh network; a set-top box (STB)/set-top unit (STU) customer electronics device; an Internet Protocol (IP) enabled television; an IP enabled media player; an IP enabled gaming console; an Ethernet gateway; a computing device connected to the LAN; an Ethernet connected computer peripheral device; an Ethernet connected router; an Ethernet connected wireless bridge; an Ethernet connected network bridge; and an Ethernet connected network switch.

In one embodiment, the server **105** is operable to store the WAN performance information in the database **106** associated with the server **105**. In one embodiment, the server **105** is operable to store the WAN performance information with an associated timestamp. In one embodiment, the DA **102** is operable to collect LAN performance data from at least one of the computing device (e.g., **101b**) and another device (e.g., PC **113**) coupled to the LAN **111**. In one embodiment, the server **105** is operable to receive the LAN performance data from the DA **102**.

In one embodiment, the WAN and LAN performance information include at least one of: topological information, geographical information, time, throughput, latency, jitter, packet loss, type of communication device, device network identification, manufacturer and model of equipment, equipment characteristics, firmware, user’s network usage pattern, RF characteristics including at least one of: signal power,

frequency bands and mode of operation, environment statistics, or data on operation of communication devices.

Topological information may include information regarding the WAN or LAN topology. For example, whether a DSL modem is behind a firewall, or whether the Internet gateway is connected to a Wi-Fi access point via a router. The geographical information may include the address or global positioning system (GPS) location of the WAN or LAN modem, or the Internet gateway. The geographical information may be useful for, for example, neighborhood analysis, and for correlating information regarding neighbors, or users in a given geographical location. Environment Statistics may include any statistics related to the environment surrounding the WAN or LAN. For example, usage statistics, statistics on periods of peak operation, statistics on the data traffic (peak traffic, average traffic, etc.).

In one embodiment, LAN performance information also includes, without limitation: LAN media type, such as Ethernet, Wi-Fi, or powerline adapters; LAN media throughput rates; channel assignments for Wi-Fi media; Wi-Fi mode such as 802.11g or 802.11n; Wi-Fi transmit power levels; and spectral masks for powerline communication.

In one embodiment, the server **105** is operable to analyze the WAN performance information to generate an analysis result. In one embodiment, the server **105** is operable to generate analysis result by computing throughput of DSL connection **110** by collecting current performance metrics associated with DSL service. In one embodiment, the server **105** is operable to perform statistical analysis, including throughput, based on information received from the DA **102** and other information in the database.

In one embodiment, the server **105** is operable to compute throughput of a communication link (e.g., Wi-Fi or Ethernet link **109**) by probing. In one embodiment, the process of probing comprises: transmitting probing data from a communication device (e.g., PC **101b**) to another communication device (e.g., PC **113**); and waiting for a predetermined time before reading operational data including counter values related to user data traffic. In one embodiment, the counter values include at least one of packet error counts, packet retransmission counts, successful ACK message counts, etc. The throughput information discussed in this embodiment and other embodiments of this disclosure could include at least one or more of the following: instantaneous speed or data rate, average data rate, and/or information on the peak and minimum data rates of a connection or communication link associated with the LAN and/or with the associated WAN.

The term “active probing” or simply “probing” herein generally refers to testing of a communication network by sending test pattern/data over the network from one communication device to another communication device, and then measuring the response from the sent test pattern. The response data is also referred herein as “active data” or “active measurement data” which is data associated with active probing of a communication network.

The term “operational data” herein generally refers to user visible or accessible data and is generally used for debugging and basic performance monitoring of communications systems.

In one embodiment, the method of probing comprises: transmitting probing data from a communication device (e.g., PC **101b**) to another communication device (e.g., PC **113**); and receiving a report indicating amount of data or data received by the other communication device.

In one embodiment, the server **105** is operable to determine availability of higher bandwidth for operating a DSL

service. In one embodiment, the server **105** is operable to determine purchase information (or service product information) for improving DSL service performance. In one embodiment, the server **105** is operable to determine network, service, or communication link utilization information for optimizing a consumer DSL service cost. In one embodiment, the server **105** is operable to group data in the database **106** according to at least one of geographical location, services type, service provider, or time. The service product information includes information regarding the type and specification of the DSL service or services which is a DSL service user/customer has purchased from the DSL service provider.

In one embodiment, the server **105** receives information from other devices and/or sources other than the communication devices to perform a comprehensive analysis of the performance of the communication system as a whole and/or individually for the communication devices in the communication system. Examples of the other devices and/or sources include near-by radio stations, location of AM radio stations, goals or business rules defined by an operator, weather forecast from the National Weather Service, etc.

In one embodiment, the server **105** is operable to report the analysis result by sending availability of higher bandwidth for operating a DSL service to the DA **102** of **101a**. In one embodiment, the server **105** is operable to report the analysis result by sending purchase information (or service product information) to PC **101b**, smart device **107**, or the user for improving DSL service performance. In one embodiment, the server **105** is operable to report the analysis result by sending utilization information to PC **101b**, smart device **107**, or any device accessible by the user for optimizing consumer DSL service cost. In one embodiment, the DA **102** receives updated or new operational parameters from the server **105** based on the analysis performed by the server **105**. For example, the server **105** when analyzing the date collected by the DA **102** of **101a**, also takes into account historical information about the communication device **101a** and information from other communication devices coupled to the network to provide updated operational parameters to the DA **102** of **101a** so that the communication device **101a** operates more efficiently under the current circumstances.

In one embodiment, the server **105** is operable to report the analysis result to at least one of the broadband subscriber and the broadband subscriber's service provider. In one embodiment, the server **105** is operable to report the analysis result by sending statistical analysis to the PC **101b**, smart device **107**, or any device accessible by the user, the statistical analysis including throughput. In one embodiment, the server **105** is operable to report the analysis result by sending availability of higher bandwidth for operating a DSL service to the DA **102** of **101a**. In one embodiment, the server **105** is operable to report the analysis result by sending purchase information (or service product information) to PC **101b**, smart device **107**, or the user for improving DSL service performance. In one embodiment, the server **105** is operable to report the analysis result by sending utilization information to PC **101b**, smart device **107**, or any device accessible by the user for optimizing consumer DSL service cost.

In one embodiment, the server **105** is operable to receive an on-demand change request. In one embodiment, the on-demand change is associated with at least one of: throughput, latency, packet loss, or jitter. For example, DA **102** of the PC **101b** sends a request via connection **109** to the server **105** to acquire higher throughput than current throughput for its DSL line **110**. In such an embodiment, the

server **105** performs analysis based on available data in the database **106** and determines if the on-demand request by the PC **102c** can be met. If it can be met, a report is provided to the DA **102** by the server **105** with information (e.g., cost etc) about how to improve throughput.

In one embodiment, the server **105** provides a marketplace of ideas for the communication devices for trading bandwidth (or performance) for media (or related) services. For example, the server **105** may provide information to the communication devices (after performing its analysis from the collected and historical information of the communication system) such as subscription to premium media services, direct payment, etc in exchange for improved performance.

FIG. 2 is a system **200** with the server **105** (or the analysis machine) operable to communicate with one or more downloadable agents **102**, according to one embodiment of the disclosure. Embodiments of FIG. 2 are described with reference to FIG. 1. In one embodiment, the system **200** comprises a device **201** (e.g., cloud **104**) having the server **105** coupled to the database **106**.

In one embodiment, the server **105** comprises: a first module **202** for collecting the WAN and LAN performance and configuration information. In one embodiment, the server **105** comprises a second module **203** for performing statistical analysis using the WAN and LAN performance and configuration information. In one embodiment, the server **105** comprises a third module **204** for generating instruction and commands according to the statistical analysis for at least one of the broadband subscriber, networking equipment at the broadband subscriber's premises, the service provider of the broadband subscriber and the access equipment of the service provider.

In one embodiment, the modules (e.g., DA **102**) that receive the instruction and command from the third module **204** are accessible by the Internet. In one embodiment, the server **105** comprises: a management interface **205** for communicating with the DA **102** (any one of DAs **1-N**, where 'N' is a positive integer) via the Internet **206** (e.g., **111**, **109** of FIG. 1). In one embodiment, the server **105** comprises: a user interface module **207** for providing access to other communication devices and for displaying information associated with the first **202**, second **203** and third **204** modules.

FIG. 3 is a flowchart **300** of a method performed by the downloadable agent **102** and an analysis machine **105** (also referred to as the server **105**) of the communication network **100**, according to one embodiment of the disclosure. Although the blocks in the flowcharts with reference to FIG. 3 are shown in a particular order, the order of the actions can be modified. Thus, the illustrated embodiments can be performed in a different order, and some actions/blocks may be performed in parallel. The flowchart of FIG. 3 is illustrated with reference to the embodiments of FIGS. 1-2. Some of the blocks and/or operations listed in FIG. 3 are optional in accordance with certain embodiments. The numbering of the blocks presented is for the sake of clarity and is not intended to prescribe an order of operations in which the various blocks must occur. Additionally, operations from the various flows may be utilized in a variety of combinations.

At block **301**, the DA **102** collects WAN performance information, wherein the DA **102** is executable on a computing device (e.g., **101c**) coupled to a LAN **111** of a broadband subscriber, wherein the LAN **111** is coupled by another device (e.g., PC **113**) to a WAN **112**. At block **302**, the DA **102** transmits the WAN performance information to

a machine (e.g., server **105**). At block **303**, the DA **102** is operable to collect LAN performance data from at least one of the computing device (e.g., **101c**) and the other device (e.g., PC **113**) coupled to the LAN **111**.

At block **304**, the DA **102** is operable to transmit the LAN performance data to the server **105**. At block **305**, the server **105** is operable to store the WAN/LAN performance information in the database **106** associated with the machine **105**. At block **306**, the server **105** is operable to store the WAN/LAN performance information with an associated timestamp. At block **307**, the server **105** is operable to analyze the WAN/LAN performance information to generate an analysis result. At block **308**, the server is operable to report the analysis result to at least one of the broadband subscriber and the broadband subscriber's service provider. At block **309**, the DA **102** receives the report with the analysis result from the server **105**.

FIG. 4A is a flowchart **400** of a method performed by the downloadable agent **102**, according to another embodiment of the disclosure. Although the blocks in the flowcharts with reference to FIG. 4A are shown in a particular order, the order of the actions can be modified. Thus, the illustrated embodiments can be performed in a different order, and some actions/blocks may be performed in parallel. The flowchart of FIG. 4A is illustrated with reference to the embodiments of FIGS. 1-2. Some of the blocks and/or operations listed in FIG. 4A are optional in accordance with certain embodiments. The numbering of the blocks presented is for the sake of clarity and is not intended to prescribe an order of operations in which the various blocks must occur. Additionally, operations from the various flows may be utilized in a variety of combinations.

At block **401**, the downloadable agent **102** collects first information related to performance of a network device (e.g., **101c**) associated with the downloadable agent **102**. At block **402**, the DA **102** sends the first information to a machine (e.g., server **105**), wherein the first information is stored in a database **106** coupled to the machine **105**, and wherein the machine **105** is operable to: receive second information from another downloadable agent (e.g., **102** of PC **113**); and analyze the first and second information with reference to data already stored in the database **106**. In one embodiment, the first and second information is time stamped.

In one embodiment, the first and second information include at least one of: topological information, geographical information, time, throughput, latency, jitter, packet loss, error information (link error rate), type of communication device, device network identification, manufacturer and model of equipment, equipment characteristics, firmware, user's network usage pattern, RF characteristics including at least one of: signal power, frequency bands and mode of operation, environment statistics, or data on operation of communication devices.

At block **403**, the DA **102** receives a report of the analyzed first and second information. In one embodiment, reporting the analysis result comprises at least one of: sending statistical analysis including throughput; sending availability of higher bandwidth for operating a DSL service; sending purchase information (or service product information) for improving DSL service performance; or sending utilization information for optimizing a consumers DSL service cost.

In one embodiment, the downloadable agent **102** is executable on multiple computing machines (e.g., PC, smart phone, tablet, CPE, etc). In one embodiment, the downloadable agent **102** is communicatively coupled to a first LAN device **101c**. In one embodiment, the method of collecting

first information comprises collecting information from multiple computing entities (e.g., **114**, **101a**, **101b**) coupled to the first LAN device **101c**. In one embodiment, the other downloadable agent **102** is communicatively coupled to a second LAN device **113**. In one embodiment, the other

downloadable agent (e.g., **102** of **113**) is operable to collect information from multiple computing entities (e.g., **114** and others) coupled to the second LAN device **113**, the second LAN device **113** being different from the first LAN device **101c**.
In one embodiment, the network device, and the first and second LAN devices comprise at least one of: computer, personal computer (PC), laptop, tablet PC, smart phone, an access point (AP); a base station; a wireless mobile device; a wireless LAN device; a DSLAM; an access gateway; a router; a performance enhancement device; a Digital Subscriber Line (DSL) Customer Premises Equipment (CPE) modem; an in-home powerline device; a Home Phoneline Network Alliance (HPNA) based device; an in-home coax distribution device; a G.hn (Global Home Networking Standard) compatible device; an in-home metering communication device; an in-home appliance communicatively interfaced with the LAN; a wireless femtocell base station; a wireless Wi-Fi compatible base station; a wireless mobile device repeater; a wireless mobile device base station; nodes within an ad-hoc/mesh network; a set-top box (STB)/set-top unit (STU) customer electronics device; an Internet Protocol (IP) enabled television; an IP enabled media player; an IP enabled gaming console; an Ethernet gateway; a computing device connected to the LAN; an Ethernet connected computer peripheral device; an Ethernet connected router; an Ethernet connected wireless bridge; an Ethernet connected network bridge; and an Ethernet connected network switch, wearable devices, internet enabled cameras, etc.

In one embodiment, the machine is a server **105** in a cloud **104**. In one embodiment, the method further comprises: sending an on-demand change request associated with at least one of: throughput, or latency. In one embodiment, the method of receiving the report comprises at least one of: receiving statistical analysis including throughput; receiving availability of higher bandwidth for operating a DSL service; receiving purchase information (or service product information) for improving DSL service performance; or receiving utilization information for optimizing a consumers DSL service cost.

FIG. 4B is a flowchart **410** of a method performed by the server **105** (or analysis machine), according to one embodiment of the disclosure. Although the blocks in the flowcharts with reference to FIG. 4B are shown in a particular order, the order of the actions can be modified. Thus, the illustrated embodiments can be performed in a different order, and some actions/blocks may be performed in parallel. The flowchart of FIG. 4B is illustrated with reference to the embodiments of FIGS. 1-3. Some of the blocks and/or operations listed in FIG. 4B are optional in accordance with certain embodiments. The numbering of the blocks presented is for the sake of clarity and is not intended to prescribe an order of operations in which the various blocks must occur. Additionally, operations from the various flows may be utilized in a variety of combinations.

At block **411**, the server **105** receives first information from a first downloadable agent **102** (e.g., DA 1 of FIG. 2). At block **412**, the server **105** receives second information from a second downloadable agent **102** (e.g., DA 2 of FIG. 2). In one embodiment, the first and second information are time stamped. In one embodiment, the first and second information includes at least one of: topological informa-

tion, geographical information, time, throughput, latency, jitter, packet loss, type of communication device, device network identification, manufacturer and model of equipment, equipment characteristics, firmware, user's network usage pattern, RF characteristics including at least one of: signal power, frequency bands and mode of operation, environment statistics, or data on operation of communication devices.

In one embodiment, the first (e.g., DA 1 of FIG. 2) and second (e.g., DA 2 of FIG. 2) agents are executable on multiple computing machines. In one embodiment, the first downloadable agent (e.g., DA 1 of FIG. 2) is communicatively coupled to a first LAN device **101c**. In one embodiment, the first downloadable agent (e.g., DA 1 of FIG. 2) is operable to collect information from multiple computing entities (e.g., **101a**, **101b**) coupled to the first LAN device **101c**. In one embodiment, the first LAN device and the second LAN device are on the same LAN **111**. In one embodiment, the first and second LAN devices are coupled to distinct LANs (not shown).

In one embodiment, the second downloadable agent (e.g., DA 1 of FIG. 2) is communicatively coupled to a second LAN device **113**. In one embodiment, the second downloadable agent (e.g., DA 1 of FIG. 2) is operable to collect information from multiple computing entities (e.g., **114**, and others) coupled to the second LAN device **113**, the second LAN device **113** being different from the first LAN device **101c**.

In one embodiment, the first PC **101b** and second **113** LAN devices comprise at least one of: Computer, personal computer (PC), laptop, tablet PC, smart phone, an access point (AP); a base station; a wireless smart phone device; a wireless LAN device; a router; an access gateway; a performance enhancement device; a Digital Subscriber Line (DSL) Customer Premises Equipment (CPE) modem; a cable CPE modem; an in-home powerline device; a Home Phoneline Network Alliance (HPNA) based device; an in-home coax distribution device; a G.hn (Global Home Networking Standard) compatible device; an in-home metering communication device; an in-home appliance communicatively interfaced with the LAN; a wireless femtocell base station; a wireless Wi-Fi compatible base station; a wireless mobile device repeater; a wireless mobile device base station; nodes within an ad-hoc/mesh network; a set-top box (STB)/set-top unit (STU) customer electronics device; an Internet Protocol (IP) enabled television; an IP enabled media player; an IP enabled gaming console; an Ethernet gateway; a computing device connected to the LAN; an Ethernet connected computer peripheral device; an Ethernet connected router; an Ethernet connected wireless bridge; an Ethernet connected network bridge; and an Ethernet connected network switch, wearable devices, internet enabled cameras, etc.

In one embodiment, the first (e.g., DA 1 of FIG. 2) and second (e.g., DA 2 of FIG. 2) downloadable agents execute on devices coupled to the same LAN **111**. In one embodiment, the first and second downloadable agents execute on devices coupled to distinct LANs (not shown). In such an embodiment, server **105** may (a) process data from distinct LANs separately, to produce analyses and recommendations for each LAN based solely on measurements made from the DAs attached to each respective LAN device; or (b) process data from distinct LANs jointly, to produce analyses and recommendations for each LAN based, at least in part, on data reported from other LANs.

The term "measurement" herein generally refers to information that is collected, and optionally processed, by the

13

DAs from the LAN devices. In one embodiment, the DAs process the information, and send the processed information to the server **105**. For example, as opposed to sending collected information regarding raw data rate, the DAs may process the raw data rate and other related information collected over time, to measure throughput and send the measured throughput to the server **105**. The measured throughput may be the average raw data rate over a specified period of time.

In one embodiment, jointly processed results from multiple LANs are used to determine whether one of the LANs is under or over-performing relative to its neighboring LANs. In one embodiment, server **105** processes data from the distinct LANs jointly to produce analyses and recommendations for each LAN, among the distinct LANs, according to data reported from each LAN for which analyses and recommendations are being created and from other LANs different from that LAN. In this embodiment, recommendations and analyses are generated for a LAN based on data collected from it and data collected from other LANs.

In one embodiment, jointly processed results from multiple LANs are used to determine whether access to a particular remote host on the Internet from a LAN is under or over performing relative to access to another remote host from that LAN. In one embodiment, comparing performance among LANs may require the presence of downloadable agents on multiple LANs. In one embodiment, comparing performances of access to a particular remote host can be done from a single LAN or from multiple LANs.

In one embodiment, LAN measurements that determine whether a LAN is under or over performing relative to its neighboring LANs, include basic estimates of throughput and stability. In one embodiment, LAN measurements include measurements made from a particular LAN to one or more servers on the Internet to assess average Internet access performance or to access performance for particular Internet sites from devices attached to the LAN.

At block **413**, the server **105** stores the first and second information in the database **106**. At block **404**, the server analyzes the first and second information with reference to data already stored in the database **106**. In one embodiment, the method of analyzing the first information with reference to the second information comprises at least one of: performing statistical analysis including throughput; determining availability of higher bandwidth for operating a DSL service; determining purchase information (or service product information) for improving DSL service performance; determining utilization information for optimizing a consumers DSL service cost; or grouping data in the database according to at least one of geographical location, services type, service provider, or time.

At block **415**, the server **105** reports the analyzed first and second information to a management entity (e.g., Internet service provider (ISP), DSL controller **103**, CPE **101a**, PC **101b**, PC **113**, smart phone **114**, etc). In one embodiment, the method of reporting comprises at least one of: providing statistical analysis including throughput; providing availability of higher bandwidth for operating a DSL service; providing purchase information (or service product information) for improving DSL service performance; or providing utilization information for optimizing a consumers DSL service cost, providing latency information for gaming, providing line bandwidth assessment (e.g., whether a line can support more bandwidth than its current bandwidth), providing stability information about a line (e.g., whether a line is now stable enough for higher throughput).

14

In one embodiment, the method further comprises: determining control information for a DSL operator, the control information according to the analyzed first and second information; and recommending the DSL operator with the control information to improve performance of a DSL service. In one embodiment, the control information relates to on-demand change in performance of the DSL service. In one embodiment, the on-demand change is associated with at least one of: throughput, latency, packet loss, or jitter. In one embodiment, the method of receiving the first and second information is via Internet.

FIG. **5A** is flowchart **500** of a method for performing a diagnostic test, according to one embodiment of the disclosure. Although the blocks in the flowchart with reference to FIG. **5A** are shown in a particular order, the order of the actions can be modified. Thus, the illustrated embodiments can be performed in a different order, and some actions/blocks may be performed in parallel.

At block **501**, the user/customer accesses a test page. In one embodiment, the test page is accessible over the web. FIG. **6A** is an exemplary report **600** (or test page) provided by the server **105** based on the information received from the DA **102**, according to one embodiment of the disclosure. In one embodiment, the test page provides a number of test options. For example, at block **502** a user may choose to perform a Run Speed test (a test option), which is also shown as the tab Speed Test in FIG. **6A**. In another example, at block **503** a user/customer may run a utilization test (another test option), shown by the tab Utilization Test in FIG. **6A**. The report **600** illustrates a speed test result page, after performing a speed test. In this particular non-limiting illustration, the report **600** shows the download and upload speeds in Mbps, and also shows an estimate of the response time of the communication device under test. In one embodiment, the report **600** is accessible by a subscriber or user/customer of the particular Internet service being tested.

At block **504**, the system (machine on which the agent is running) seeks permission from the user/customer to run the downloadable agent **102** on the machine. If the permission is granted, the downloadable agent **102** attempts to access the communication device (such as a DSL modem) diagnostics page, and would try to run a speed test (e.g., at block **505**) or utilization test. If the connection fails, for example due to a link error, the process moves back as shown by block **506**. If the test is successful, the process moves to block **507**, which checks whether the user/customer is login to the system/server (such as server **105**). If the user is logged in, a more complete report is shown to the user at block **508** which includes current and past results. If the user/customer was not logged in, then at block **509** only current results are shown.

The flowcharts discussed herein are merely examples, of an example embodiment, and not all blocks need to be performed. Other embodiments of the disclosure could also map to a similar flowchart. For example, at block **505**, the downloadable agent **102** may collect data and produce analysis for the LAN and WAN performance of some other device on the LAN, rather than collecting data and producing analyses for the device on which the DA **102** executes.

FIG. **5B** is flowchart **510** of a method for running (i.e., executing) functions, according to another embodiment of the disclosure. The figure is similar to FIG. **5A**, but more general. Although the blocks in the flowchart with reference to FIG. **5B** are shown in a particular order, the order of the actions can be modified. Thus, the illustrated embodiments can be performed in a different order, and some actions/blocks may be performed in parallel.

At block **511**, the user/customer accesses a Graphic User Interface (GUI) page. In one embodiment, the GUI page is accessible over the web. In one embodiment, the GUI page provides a number of functions for running diagnostics, performance measurement or data collection. For example, at block **512** a user may choose to perform data collection. In another example, at block **513** a user/customer may run a diagnostics function or a performance measurement.

At block **514**, the system (machine on which the agent is running) seeks permission from the user/customer to run the downloadable agent **102** on the machine. If the permission is granted, the downloadable agent **102** attempts to access the communication device (such as a DSL modem), and would try to run one of the functions above (e.g., at block **515**), such as a performance measurement or diagnostics test. If the connection fails, for example due to a link error, the process moves back as shown by block **516**. If the test is successful, the process moves to block **507**, which checks whether the user/customer is login to the system/server (such as server **105**). If the user is logged in, a more complete report is shown to the user at block **518** which includes current and past results. If the user/customer was not logged in, then at block **519** only current results are shown.

The flowcharts discussed herein are merely examples, of an example embodiment, and not all blocks need to be performed. Other embodiments of the disclosure could also map to a similar flowchart. For example, at block **505**, the downloadable agent **102** may collect data and produce analysis for the LAN and WAN performance of some other device on the LAN, rather than collecting data and producing analyses for the device on which the DA **102** executes.

FIG. **6B** is another exemplary report **620** provided by the server based on received information from the downloadable agent, according to one embodiment of the disclosure. The report **620** depicts a usage report, according to one embodiment. The report **620**, for example, includes information on utilization of the capacity of the subscriber or user/customer link. The report **620** may also provide information on whether a customer link has the potential to operate at higher speeds. The report **620** also shows a Traffic Usage Report. The example Traffic Usage Report shows traffic information collected over a week, such as Download Usage, max data rate used, max available data rate, etc.

FIG. **7** is a processor-based system **700** having machine-readable storage medium with computer executable instructions of a downloadable agent, according to one embodiment of the disclosure. The storage medium **704** and associated computer executable instructions **102/704a** may be in any of the communication devices and/or servers discussed herein. The computer-machine-readable/executable instructions **102/704a** are executed by a processor **701**. Elements of embodiments are provided as machine-readable medium for storing the computer-executable instructions (e.g., instructions to implement the flowcharts of FIGS. **2** and **4** and other processes discussed in the description).

In one embodiment, the processor-based system **700** further comprises a database **702** to store data used by the instructions **102/704a**. In one embodiment, the processor-based system **700** includes a network interface **705** to communicate with other devices. In one embodiment, the components of the processor-based system **700** communicate with one another via a network bus **703**.

The machine-readable storage medium **704** may include, but is not limited to, flash memory, optical disks, hard disk drive (HDD), Solid State Drive (SSD), CD-Read Only Memory (CD-ROMs), DVD ROMs, RAMs, EPROMs,

EEPROMs, magnetic or optical cards, or other type of machine-readable media suitable for storing electronic or computer-executable instructions. For example, embodiments of the disclosure may be downloaded as a computer program (e.g., BIOS) which may be transferred from a remote computer (e.g., a server) to a requesting computer (e.g., a client) by way of data signals via a communication link (e.g., a modem or network connection).

FIG. **8** is a processor-based system **800** having machine-readable storage medium with computer executable instructions executed by the server **105**, according to one embodiment of the disclosure. The storage medium **804** and associated computer executable instructions **202/203/204/804a** may be in any of the communication devices and/or servers discussed herein. The computer-machine-readable/executable instructions **202/203/204/804a** are executed by a processor **801** of the server **105**. Elements of embodiments are provided as machine-readable medium for storing the computer-executable instructions (e.g., instructions to implement the flowcharts of FIGS. **2**, **4**, **6B** and other processes discussed in the description).

In one embodiment, the processor-based system **800** further comprises a database **802** to store data used by the instructions **202/203/204/804a**. In one embodiment, the processor-based system **800** includes a network interface **605** to communicate with other devices. In one embodiment, the components of the processor-based system **600** communicate with one another via a network bus **803**.

The machine-readable storage medium **804** may include, but is not limited to, flash memory, optical disks, hard disk drive (HDD), Solid State Drive (SSD), CD-Read Only Memory (CD-ROMs), DVD ROMs, RAMs, EPROMs, EEPROMs, magnetic or optical cards, or other type of machine-readable media suitable for storing electronic or computer-executable instructions. For example, embodiments of the disclosure may be downloaded as a computer program (e.g., BIOS) which may be transferred from a remote computer (e.g., a server) to a requesting computer (e.g., a client) by way of data signals via a communication link (e.g., a modem or network connection).

Reference in the specification to “an embodiment,” “one embodiment,” “some embodiments,” or “other embodiments” means that a particular feature, structure, or characteristic described in connection with the embodiments is included in at least some embodiments, but not necessarily all embodiments. The various appearances of “an embodiment,” “one embodiment,” or “some embodiments” are not necessarily all referring to the same embodiments. If the specification states a component, feature, structure, or characteristic “may,” “might,” or “could” be included, that particular component, feature, structure, or characteristic is not required to be included. If the specification or claim refers to “a” or “an” element, that does not mean there is only one of the elements. If the specification or claims refer to “an additional” element, that does not preclude there being more than one of the additional element.

Furthermore, the particular features, structures, functions, or characteristics may be combined in any suitable manner in one or more embodiments. For example, a first embodiment may be combined with a second embodiment anywhere the particular features, structures, functions, or characteristics associated with the two embodiments are not mutually exclusive.

While the disclosure has been described in conjunction with specific embodiments thereof, many alternatives, modifications and variations of such embodiments will be apparent to those of ordinary skill in the art in light of the

foregoing description. The embodiments of the disclosure are intended to embrace all such alternatives, modifications, and variations as to fall within the broad scope of the appended claims.

The following examples pertain to further embodiments. Specifics in the examples may be used anywhere in one or more embodiments. All optional features of the apparatus described herein may also be implemented with respect to a method or process.

For example, in one embodiment a method performed by a downloadable agent comprises: collecting WAN performance information, wherein the downloadable agent is executable on a computing device coupled to a LAN of a broadband subscriber, wherein the LAN is coupled by another device to a WAN; and transmitting the WAN performance information to a machine; wherein the machine is operable to: store the WAN performance information in a database associated with the machine, analyze the WAN performance information to generate an analysis result; and report the analysis result to at least one of the broadband subscriber and the broadband subscriber's service provider.

In one embodiment, the other device is a router. In one embodiment, the machine is operable to store the WAN performance information with an associated timestamp. In one embodiment, the downloadable agent is operable to collect LAN performance data from at least one of the computing device and other device coupled to the LAN. In one embodiment, the method further comprises transmitting by the downloadable agent the LAN performance data to the machine.

In one embodiment, the downloadable agent is executable in a virtual machine on the computing device. In one embodiment, the downloadable agent is dynamically downloaded to the computing device. In one embodiment, the method further comprises receiving the analysis result, wherein receiving the analysis result comprises at least one of: receiving statistical analysis including throughput; receiving availability of higher bandwidth for operating a DSL service; receiving purchase information (or service product information) for improving DSL service performance; or receiving utilization information for optimizing a consumers DSL service cost.

In one embodiment, the WAN performance information includes at least one of: topological information, geographical information, throughput, latency, jitter, packet loss, time, type of communication device, device network identification, manufacturer and model of equipment, equipment characteristics, firmware, user's network usage pattern, user's provisioned WAN service, RF characteristics including at least one of: signal power, frequency bands and mode of operation, environment statistics, or data on operation of communication devices.

In one embodiment, the method further comprises: sending an on-demand change request associated with at least one of: throughput, or latency. In one embodiment, the machine is a server that resides in a cloud. In one embodiment, the computing device is one of: a personal computer; a gaming console; an access point (AP); a base station; a wireless smart phone device; a wireless LAN device; an access gateway; a router; a performance enhancement device; a Digital Subscriber Line (DSL) Customer Premises Equipment (CPE) modem; a cable CPE modem; an in-home powerline device; a Home Phoneline Network Alliance (HPNA) based device; an in-home coax distribution device; a G.hn (Global Home Networking Standard) compatible device; an in-home metering communication device; an in-home appliance communicatively interfaced with the

LAN; a wireless femtocell base station; a wireless Wi-Fi compatible base station; a wireless mobile device repeater; a wireless mobile device base station; nodes within an ad-hoc/mesh network; a set-top box (STB)/set-top unit (STU) customer electronics device; an Internet Protocol (IP) enabled television; an IP enabled media player; an IP enabled gaming console; an Ethernet gateway; a computing device connected to the LAN; an Ethernet connected computer peripheral device; an Ethernet connected router; an Ethernet connected wireless bridge; an Ethernet connected network bridge; and an Ethernet connected network switch.

In another example, a machine readable storage medium is provided having computer executable instructions that when executed cause a processor to perform a method according to any one of method discussed above.

In another example, a system comprises: a database; and a server coupled to the database, the server operable to: receive WAN performance information from a downloadable agent, wherein the downloadable agent is executable on a computing device coupled to a LAN of a broadband subscriber, wherein the LAN is coupled by another device to a WAN; and store the WAN performance information in the database associated with the server, analyze the WAN performance information to generate an analysis result; and report the analysis result to at least one of the broadband subscriber and the broadband subscriber's service provider.

In one embodiment, the server resides in a cloud. In one embodiment, the server is operable to store the WAN performance information with an associated timestamp. In one embodiment, the downloadable agent is operable to collect LAN performance data from at least one of the computing device and other device coupled to the LAN. In one embodiment, the server is operable to receive from the downloadable agent the LAN performance data. In one embodiment, the server comprises: a first module for collecting the WAN performance information; a second module for performing statistical analysis using the first WAN performance information; and a third module for generating instruction and commands according to the statistical analysis for at least one of the broadband subscriber, networking equipment at the broadband subscriber's premises, the service provider of the broadband subscriber and the access equipment of the service provider.

In one embodiment, the modules that receive the instruction and command from the third module are accessible by internet. In one embodiment, the server comprises: a management interface for communicating with the downloadable agent via internet. In one embodiment, the server comprises: a user interface module for providing access and for displaying information associated with the first, second, third modules.

In one embodiment, the server is operable to compute throughput of DSL connection by collecting current performance metrics associated with DSL service. In one embodiment, the server to perform throughput computation with reference to a website. In one embodiment, the throughput computation comprises probing a network. In one embodiment, the downloadable agent is executable in a virtual machine on the computing device. In one embodiment, the downloadable agent is dynamically downloaded to the computing device.

In one embodiment, reporting the analysis result comprises at least one of: sending statistical analysis including throughput; sending availability of higher bandwidth for operating a DSL service; sending purchase information (or service product information) for improving DSL service performance; or sending utilization information for optimiz-

ing a consumers DSL service cost. In one embodiment, the WAN performance information includes at least one of: topological information, geographical information, time, throughput, latency, jitter, packet loss, type of communication device, device network identification, manufacturer and model of equipment, equipment characteristics, firmware, user's network usage pattern, RF characteristics including at least one of: signal power, frequency bands and mode of operation, environment statistics, or data on operation of communication devices.

In one embodiment, the system is operable to receive an on-demand change request associated with at least one of: throughput, or latency. In one embodiment, the computing device is one of: an access point (AP); a base station; a wireless smartphone device; a wireless LAN device; an access gateway; a router, a performance enhancement device; a Digital Subscriber Line (DSL) Customer Premises Equipment (CPE) modem; a cable CPE modem; an in-home powerline device; a Home Phoneline Network Alliance (HPNA) based device; an in-home coax distribution device; a G.hn (Global Home Networking Standard) compatible device; an in-home metering communication device; an in-home appliance communicatively interfaced with the LAN; a wireless femtocell base station; a wireless Wi-Fi compatible base station; a wireless mobile device repeater; a wireless mobile device base station; nodes within an ad-hoc/mesh network; a set-top box (STB)/set-top unit (STU) customer electronics device; an Internet Protocol (IP) enabled television; an IP enabled media player; an IP enabled gaming console; an Ethernet gateway; a computing device connected to the LAN; an Ethernet connected computer peripheral device; an Ethernet connected router; an Ethernet connected wireless bridge; an Ethernet connected network bridge; and an Ethernet connected network switch.

In another example, a method performed by a server comprises: receiving first information from a first downloadable agent; receiving second information from a second downloadable agent; storing the first and second information in a database; analyzing the first and second information with reference to data already stored in the database; and reporting the analyzed first and second information to a management entity.

In one embodiment, the first and second information are time stamped. In one embodiment, the first and second agents are executable on multiple computing machines. In one embodiment, the first downloadable agent is communicatively coupled to a first LAN device. In one embodiment, the first downloadable agent is operable to collect information from multiple computing entities coupled to the first LAN device. In one embodiment, the second downloadable agent is communicatively coupled to a second LAN device. In one embodiment, the second downloadable agent is operable to collect information from multiple computing entities coupled to the second LAN device, the second LAN device being different from the first LAN device.

In one embodiment, the first and second LAN devices comprise at least one of: tablet computing device; an access point (AP); a base station; a wireless smartphone device; a wireless LAN device; a router; an access gateway; a performance enhancement device; a Digital Subscriber Line (DSL) Customer Premises Equipment (CPE) modem; a cable CPE modem; an in-home powerline device; a Home Phoneline Network Alliance (HPNA) based device; an in-home coax distribution device; a G.hn (Global Home Networking Standard) compatible device; an in-home metering communication device; an in-home appliance communicatively interfaced with the LAN; a wireless femtocell base

station; a wireless Wi-Fi compatible base station; a wireless mobile device repeater; a wireless mobile device base station; nodes within an ad-hoc/mesh network; a set-top box (STB)/set-top unit (STU) customer electronics device; an Internet Protocol (IP) enabled television; an IP enabled media player; an IP enabled gaming console; an Ethernet gateway; a computing device connected to the LAN; an Ethernet connected computer peripheral device; an Ethernet connected router; an Ethernet connected wireless bridge; an Ethernet connected network bridge; and an Ethernet connected network switch.

In one embodiment, the first and second downloadable agents execute on devices coupled to the same LAN. In one embodiment, the first and second downloadable agents execute on devices coupled to distinct LANs. In one embodiment, the method further comprises: determining control information for a DSL operator, the control information according to the analyzed first and second information; and recommending the DSL operator with the control information to improve performance of a DSL service.

In one embodiment, the control information relates to on-demand change in performance of the DSL service. In one embodiment, the on-demand change is associated with at least one of: throughput, latency, packet loss, or jitter. In one embodiment, the method of reporting comprises at least one of: providing statistical analysis including throughput; providing availability of higher bandwidth for operating a DSL service; providing purchase information (or service product information) for improving DSL service performance; or providing utilization information for optimizing a consumers DSL service cost. In one embodiment, the method of receiving the first and second information is via Internet.

In one embodiment, the first and second information includes at least one of: topological information, geographical information, time, throughput, latency, jitter, packet loss, type of communication device, device network identification, manufacturer and model of equipment, equipment characteristics, firmware, user's network usage pattern, RF characteristics including at least one of: signal power, frequency bands and mode of operation, environment statistics, or data on operation of communication devices.

In one embodiment, the method of analyzing the first information with reference to the second information comprises at least one of: performing statistical analysis including throughput; determining availability of higher bandwidth for operating a DSL service; determining purchase information (or service product information) for improving DSL service performance; determining utilization information for optimizing a consumers DSL service cost; or grouping data in the database according to at least one of: geographical location, services type, service provider, or time.

In one embodiment, the method further comprises: processing data from the distinct LANs separately to produce analyses and recommendations for each LAN, among the distinct LANs, according to measurements made by corresponding first or second downloadable agents. In one embodiment, the method of further comprises: processing data from the distinct LANs jointly to produce analyses and recommendations for each LAN, among the distinct LANs, according to data reported from each LAN for which analyses and recommendations are being created and from other LANs different from that LAN. In one embodiment, the analyses for each LAN include at least one of: whether the LAN is under or over performing relative to a neighboring LAN; or whether access to a particular remote host on the

Internet from a LAN is under or over performing relative to access to another remote host from that LAN.

In one embodiment, the server comprises: a first module for collecting the first and second information; a second module for performing statistical analysis using the first and/or second information; and a third module for generating instruction and command for the first and/or second devices or modules according to the statistical analysis. In one embodiment, the modules that receive the instruction and command from the third module are accessible by internet. In one embodiment, the server comprises: a management interface for communicating with the first and second downloadable agents via internet. In one embodiment, the server comprises: a user interface module for providing access and for displaying information associated with the first, second, third modules.

In one embodiment, the first information is collected by a downloadable agent coupled to a DSL connection, the downloadable agent to send the first information to the server. In one embodiment, the server resides in a cloud. In one embodiment, the server is operable to compute throughput of a DSL connection by collecting current performance metrics associated with the DSL service. In one embodiment, the server to perform throughput computation with reference to a website. In one embodiment, the throughput computation comprises probing a network.

In one embodiment, the method of probing comprises: transmitting probing data from a communication device to another communication device; and waiting for a predetermined time before reading operational data including counter values related to user data traffic. In one embodiment, the method of probing comprises: transmitting probing data from a communication device to another communication device; and receiving a report indicating amount of data or data received by the other communication device. In one embodiment, the server is operable to apply a machine learning algorithm for training a performance estimation algorithm for the communication device.

In another example, a machine readable storage medium is provided having computer executable instructions that when executed cause a processor to perform a method according to the method discussed above.

In another example, a system comprises: a database; a communication interface for communicating with other devices; and a server coupled to the database and the communication interface, wherein the server is operable to perform a method according to the method discussed above.

In one embodiment, the server comprises: a first module for collecting the first and second information; a second module for performing statistical analysis using the first and/or second information; and a third module for generating instruction and command for the first and/or second devices or modules according to the statistical analysis. In one embodiment, the modules that receive the instruction and command from the third module are accessible by internet. In one embodiment, the server comprises: a management interface for communicating with the first and second agents via internet. In one embodiment, the server comprises: a user interface module for providing access and for displaying information associated with the first, second, third modules.

In one embodiment, the first information is collected by a downloadable agent coupled to a DSL connection, the downloadable agent to send the first information to the server. In one embodiment, the server is operable to compute throughput of the DSL connection by collecting current performance metrics associated with the DSL service. In one

embodiment, the server to perform throughput computation with reference to a website. In one embodiment, the throughput computation comprises probing a network. In one embodiment, the server resides in a cloud. In one embodiment, the communication interface comprises at least one of: a wired Ethernet interface; a powerline communications interface; or a wireless interface.

In one embodiment, the other devices comprise at least one of: tablet computing device; an access point (AP); a base station; a wireless mobile device; a wireless LAN device; an access gateway; a router; a performance enhancement device; a Digital Subscriber Line (DSL) Customer Premises Equipment (CPE) modem; a cable CPE modem; an in-home powerline device; a Home Phoneline Network Alliance (HPNA) based device; an in-home coax distribution device; a G.hn (Global Home Networking Standard) compatible device; an in-home metering communication device; an in-home appliance communicatively interfaced with the LAN; a wireless femtocell base station; a wireless Wi-Fi compatible base station; a wireless mobile device repeater; a wireless mobile device base station; nodes within an ad-hoc/mesh network; a set-top box (STB)/set-top unit (STU) customer electronics device; an Internet Protocol (IP) enabled television; an IP enabled media player; an IP enabled gaming console; an Ethernet gateway; a computing device connected to the LAN; an Ethernet connected computer peripheral device; an Ethernet connected router; an Ethernet connected wireless bridge; an Ethernet connected network bridge; and an Ethernet connected network switch.

In another example, a method performed by a downloadable agent on a processor comprises: collecting first information related to performance of a network device associated with the downloadable agent; sending the first information to a machine, wherein the first information is stored in a database coupled to the machine, and wherein the machine is operable to: receive second information from another downloadable agent; and analyze the first and second information with reference to data already stored in the database; and receiving a report of the analyzed first and second information.

In one embodiment, the first and second information is time stamped. In one embodiment, the downloadable agent is executable on multiple computing machines. In one embodiment, the downloadable agent is communicatively coupled to a first LAN device. In one embodiment, the method of collecting first information comprises collecting information from multiple computing entities coupled to the first LAN device. In one embodiment, the other downloadable agent is communicatively coupled to a second LAN device. In one embodiment, the other downloadable agent is operable to collect information from multiple computing entities coupled to the second LAN device, the second LAN device being different from the first LAN device.

In one embodiment, the network device, and the first and second LAN devices comprise at least one of: tablet computing device; an access point (AP); a base station; a wireless mobile device; a wireless LAN device; a DSLAM; an access gateway; a router; a performance enhancement device; a Digital Subscriber Line (DSL) Customer Premises Equipment (CPE) modem; an in-home powerline device; a Home Phoneline Network Alliance (HPNA) based device; an in-home coax distribution device; a G.hn (Global Home Networking Standard) compatible device; an in-home metering communication device; an in-home appliance communicatively interfaced with the LAN; a wireless femtocell base station; a wireless Wi-Fi compatible base station; a wireless mobile device repeater; a wireless mobile device

base station; nodes within an ad-hoc/mesh network; a set-top box (STB)/set-top unit (STU) customer electronics device; an Internet Protocol (IP) enabled television; an IP enabled media player; an IP enabled gaming console; an Ethernet gateway; a computing device connected to the LAN; an Ethernet connected computer peripheral device; an Ethernet connected router; an Ethernet connected wireless bridge; an Ethernet connected network bridge; and an Ethernet connected network switch.

In one embodiment, the machine is a server in a cloud. In one embodiment, the first and second information include at least one of: topological information, geographical information, time, throughput, latency, jitter, packet loss, type of communication device, device network identification, manufacturer and model of equipment, equipment characteristics, firmware, user's network usage pattern, RF characteristics including at least one of: signal power, frequency bands and mode of operation, environment statistics, or data on operation of communication devices.

In one embodiment, the method further comprises: sending an on-demand change request associated with at least one of: throughput, or latency. In one embodiment, the method of receiving the report comprises at least one of: receiving statistical analysis including throughput; receiving availability of higher bandwidth for operating a DSL service; receiving purchase information (or service product information) for improving DSL service performance; or receiving utilization information for optimizing a consumers DSL service cost.

In one embodiment, the machine is operable to: process data from distinct LANs separately to produce analyses and recommendations for each LAN, among the distinct LANs, according to measurements made by respective downloadable agents coupled to respective distinct LANs. In one embodiment, the machine is operable to: process data from distinct LANs jointly to produce analyses and recommendations for each LAN, among the distinct LANs, according to data reported from each LAN for which analyses and recommendations are being created and from other LANs different from that LAN. In one embodiment, the analyses for each LAN include at least one of: whether the LAN is under or over performing relative to a neighboring LAN; or whether access to a particular remote host on the Internet from a LAN is under or over performing relative to access to another remote host from that LAN.

In another example, a method performed by a downloadable agent on a processor comprises: collecting first information related to performance of a network device associated with the downloadable agent; sending the first information to a machine, wherein the first information is stored in a database coupled to the machine, and wherein the machine is operable to: receive second information from another downloadable agent; and analyze the first and second information with reference to data already stored in the database; and receiving a report of the analyzed first and second information.

In one embodiment, the first and second information is time stamped. In one embodiment, the downloadable agent is executable on multiple computing machines. In one embodiment, the downloadable agent is communicatively coupled to a first LAN device.

In one embodiment, collecting first information comprises collecting information from multiple computing entities coupled to the first LAN device. In one embodiment, the other downloadable agent is communicatively coupled to a second LAN device. In one embodiment, the other downloadable agent is operable to collect information from mul-

iple computing entities coupled to the second LAN device, the second LAN device being different from the first LAN device.

In one embodiment, the network device and the first and second LAN devices comprise at least one of: an access point (AP); a base station; a wireless mobile device; a wireless LAN device; a DSLAM; an access gateway; a router; a performance enhancement device; a Digital Subscriber Line (DSL) Customer Premises Equipment (CPE) modem; an in-home powerline device; a Home Phoneline Network Alliance (HPNA) based device; an in-home coax distribution device; a G.hn (Global Home Networking Standard) compatible device; an in-home metering communication device; an in-home appliance communicatively interfaced with the LAN; a wireless femtocell base station; a wireless Wi-Fi compatible base station; a wireless mobile device repeater; a wireless mobile device base station; nodes within an ad-hoc/mesh network; a set-top box (STB)/set-top unit (STU) customer electronics device; an Internet Protocol (IP) enabled television; an IP enabled media player; an IP enabled gaming console; an Ethernet gateway; a computing device connected to the LAN; an Ethernet connected computer peripheral device; an Ethernet connected router; an Ethernet connected wireless bridge; an Ethernet connected network bridge; an Ethernet connected network switch; wearable device; and internet enabled cameras.

In one embodiment, the machine is a server in a cloud. In one embodiment, the first and second information include at least one of: topological information, geographical information, time, throughput, latency, jitter, packet loss, type of communication device, device network identification, manufacturer and model of equipment, equipment characteristics, firmware, user's network usage pattern, RF characteristics including at least one of: signal power, frequency bands and mode of operation, environment statistics, or data on operation of communication devices.

In one embodiment, the further comprises: sending an on-demand change request associated with at least one of: throughput, or latency. In one embodiment, receiving the report comprises at least one of: receiving statistical analysis including throughput; receiving availability of higher bandwidth for operating a DSL service; receiving service product information for improving DSL service performance; or receiving utilization information for optimizing a consumers DSL service cost.

In one embodiment, the machine is operable to: process data from distinct LANs separately to produce analyses and recommendations for each LAN, among the distinct LANs, according to measurements made by respective downloadable agents coupled to respective distinct LANs. In one embodiment, the machine is operable to: process data from distinct LANs jointly to produce analyses and recommendations for each LAN, among the distinct LANs, according to data reported from each LAN for which analyses and recommendations are being created and from other LANs different from that LAN.

In one embodiment, the analyses for each LAN include at least one of: whether the LAN is under or over performing relative to a neighboring LAN; or whether access to a particular remote host on the Internet from a LAN is under or over performing relative to access to another remote host from that LAN. In one embodiment, the downloadable agent is executable on an Internet browser. In one embodiment, the downloadable agent is accessible remotely via the Internet.

In one embodiment, the method further comprises periodically sending collected first information to the machine. In one embodiment, the method further comprises waiting

for a predetermined condition or threshold to be satisfied before sending the first information to the machine. In one embodiment, the predetermined condition or threshold is at least one of: a function of a type of data collected, or limit or threshold on a performance level associated with the collected data. In one embodiment, the machine is operable the first information by polling or scheduled based system. In one embodiment, the method further comprises collecting data from at least one of: National Weather Service; radio station; or operator.

In another example, a machine readable storage medium is provided having computer executable instructions that when executed cause a processor to perform a method according to the method discussed above.

An abstract is provided that will allow the reader to ascertain the nature and gist of the technical disclosure. The abstract is submitted with the understanding that it will not be used to limit the scope or meaning of the claims. The following claims are hereby incorporated into the detailed description, with each claim standing on its own as a separate embodiment.

We claim:

1. A method performed by a downloadable agent, the method comprising:

collecting WAN performance information, wherein the downloadable agent is executable on a computing device coupled to a LAN of a broadband subscriber, wherein the LAN is coupled by another device to a WAN;

transmitting the WAN performance information to a machine, wherein the machine is operable to:

store the WAN performance information in a database associated with the machine,

analyze the WAN performance information to generate an analysis result, the analysis result comprises at least throughput; and

report the analysis result to at least one of the broadband subscriber and the broadband subscriber's service provider; and

sending an on-demand change request associated with at least one of throughput, or latency.

2. The method of claim 1, wherein the other device is a router.

3. The method of claim 1, wherein the machine is operable to store the WAN performance information with an associated timestamp.

4. The method of claim 1 wherein the downloadable agent is operable to collect LAN performance data from at least one of the computing device and other device coupled to the LAN.

5. The method of claim 4 further comprises transmitting by the downloadable agent the LAN performance data to the machine.

6. The method of claim 1, wherein the downloadable agent is executable in a virtual machine on the computing device.

7. The method of claim 1 further comprises receiving the analysis result, wherein receiving the analysis result comprises at least one of:

receiving availability of higher bandwidth for operating a DSL service;

receiving service product information for improving DSL service performance; or

receiving utilization information for optimizing a consumers DSL service cost.

8. The method of claim 1, wherein the WAN performance information includes at least one of:

topological information,
geographical information,
latency,

jitter,

packet loss,

time,

type of communication device,

device network identification,

manufacturer and model of equipment,

equipment characteristics,

firmware,

user's network usage pattern,

user's provisioned WAN service,

RF characteristics including at least one of: signal power,

frequency bands and mode of operation,

environment statistics, or

data on operation of communication devices.

9. The method of claim 1, wherein the machine is a server that resides in a cloud.

10. The method of claim 1, wherein the computing device is one of:

tablet computing device;

a personal computer;

a gaming console;

an access point (AP);

a base station;

a wireless smartphone device;

a wireless LAN device;

an access gateway;

a router;

a performance enhancement device;

a Digital Subscriber Line (DSL) Customer Premises Equipment (CPE) modem;

a cable CPE modem;

an in-home powerline device;

a Home Phoneline Network Alliance (HPNA) based device;

an in-home coax distribution device;

a G.hn (Global Home Networking Standard) compatible device;

an in-home metering communication device;

an in-home appliance communicatively interfaced with the LAN;

a wireless femtocell base station;

a wireless Wi-Fi compatible base station;

a wireless mobile device repeater;

a wireless mobile device base station;

nodes within an ad-hoc/mesh network;

a set-top box (STB)/set-top unit (STU) customer electronics device;

an Internet Protocol (IP) enabled television;

an IP enabled media player;

an IP enabled gaming console;

an Ethernet gateway;

a computing device connected to the LAN;

an Ethernet connected computer peripheral device;

an Ethernet connected router;

an Ethernet connected wireless bridge;

an Ethernet connected network bridge;

an Ethernet connected network switch;

wearable device; or

internet enabled cameras.

11. The method of claim 1, wherein the downloadable agent is executable on an Internet browser.

12. The method of claim 1, wherein the downloadable agent is accessible remotely via the Internet.

27

13. The method of claim 1 further comprises periodically sending collected WAN performance information to the machine.

14. The method of claim 1 further comprises waiting for a predetermined condition or threshold to be satisfied before sending collected WAN performance information to the machine.

15. The method of claim 14, where the predetermined condition or threshold is at least one of:

a function of a type of data collected, or
limit or threshold on a performance level associated with the collected data.

16. The method of claim 1, wherein the machine is operable to collect WAN performance information by polling or by a scheduled based system.

17. The method of claim 1 further comprises collecting data from at least one of:

The National Weather Service;
a radio station; or
an operator.

18. A system comprising:
a database; and

a server coupled to the database, the server operable to: receive WAN performance information from a downloadable agent, wherein the downloadable agent is executable on a computing device coupled to a LAN of a broadband subscriber, wherein the LAN is coupled by another device to a WAN; and

store the WAN performance information in the database associated with the server,

analyze the WAN performance information to generate an analysis result, the analysis result comprises at least throughput; and

report the analysis result to at least one of the broadband subscriber and the broadband subscriber's service provider;

wherein the server is operable to receive an on-demand change request associated with at least one of: throughput, or latency.

19. The system of claim 18, wherein the server resides in a cloud.

20. The system of claim 18, wherein the server is operable to store the WAN performance information with an associated timestamp.

21. The system of claim 18, wherein the downloadable agent is operable to collect LAN performance data from at least one of the computing device and other device coupled to the LAN.

22. The system of claim 21, wherein the server is operable to receive from the downloadable agent the LAN performance data.

23. The system of claim 22, wherein the server comprises:
a first logic for collecting the WAN performance information;

a second logic for performing statistical analysis using the first WAN performance information; and

a third logic for generating instruction and commands according to the statistical analysis for at least one of the broadband subscriber, networking equipment at the broadband subscriber's premises, the service provider of the broadband subscriber and the access equipment of the service provider.

24. The system of claim 23, wherein the logic that receive the instruction and command from the third module are accessible by internet.

28

25. The system of claim 23, wherein the server comprises: a management interface for communicating with the downloadable agent via internet.

26. The system of claim 23, wherein the server comprises: a user interface logic for providing access and for displaying information associated with the first, second, third modules.

27. The system of claim 18, wherein the server is operable to compute throughput of a DSL connection by collecting current performance metrics associated with DSL service.

28. The system of claim 27, wherein the server is to perform throughput computation with reference to a website.

29. The system of claim 28, wherein the throughput computation comprises probing a network.

30. The system of claim 18, wherein the downloadable agent is executable in a virtual machine on the computing device.

31. The system of claim 18, wherein the downloadable agent is dynamically downloaded to the computing device.

32. The system of claim 18, wherein the server is operable to report the analysis result by performing at least one of:
sending availability of higher bandwidth for operating a DSL service;
sending service product information for improving DSL service performance; or
sending utilization information for optimizing a consumers DSL service cost.

33. The system of claim 18, wherein the WAN performance information includes at least one of:

topological information,
geographical information,

time,
latency,

jitter,
packet loss,

type of communication device,
device network identification,

manufacturer and model of equipment,
equipment characteristics,

firmware,

user's network usage pattern,

RF characteristics including at least one of: signal power, frequency bands and mode of operation,

environment statistics, or

data on operation of communication devices.

34. The system of claim 18, wherein the computing device is one of:

tablet computing device;

an access point (AP);

a base station;

a wireless smartphone device;

a wireless LAN device;

an access gateway;

a router,

a performance enhancement device;

a Digital Subscriber Line (DSL) Customer Premises Equipment (CPE) modem;

a cable CPE modem;

an in-home powerline device;

a Home Phoneline Network Alliance (HPNA) based device;

an in-home coax distribution device;

a G.hn (Global Home Networking Standard) compatible device;

an in-home metering communication device;

an in-home appliance communicatively interfaced with the LAN;

a wireless femtocell base station;
 a wireless Wi-Fi compatible base station;
 a wireless mobile device repeater;
 a wireless mobile device base station;
 nodes within an ad-hoc/mesh network; 5
 a set-top box (STB)/set-top unit (STU) customer elec-
 tronics device;
 an Internet Protocol (IP) enabled television;
 an IP enabled media player;
 an IP enabled gaming console; 10
 an Ethernet gateway;
 a computing device connected to the LAN;
 an Ethernet connected computer peripheral device;
 an Ethernet connected router;
 an Ethernet connected wireless bridge; 15
 an Ethernet connected network bridge;
 an Ethernet connected network switch;
 wearable device; or
 internet enabled cameras.

35. The system of claim **18**, wherein the server is operable 20
 to provide a marketplace of ideas for the communication
 devices for trading bandwidth for media services.

36. The system of claim **18**, wherein the server is operable
 to collect WAN performance information by polling or by a
 scheduled based system. 25

* * * * *